



Full wwPDB X-ray Structure Validation Report ⓘ

May 22, 2020 – 02:21 pm BST

PDB ID : 5DTO
Title : Dengue virus full length NS5 complexed with viral Cap 0-RNA and SAH
Authors : Zhao, Y.; Soh, T.S.; Lim, S.P.; Chung, K.Y.; Swaminathan, K.; Vasudevan, S.G.; Shi, P.-Y.; Lescar, J.; Luo, D.
Deposited on : 2015-09-18
Resolution : 2.60 Å(reported)

This is a Full wwPDB X-ray Structure Validation Report for a publicly released PDB entry.

We welcome your comments at validation@mail.wwpdb.org

A user guide is available at

<https://www.wwpdb.org/validation/2017/XrayValidationReportHelp>

with specific help available everywhere you see the ⓘ symbol.

The following versions of software and data (see [references ⓘ](#)) were used in the production of this report:

MolProbity : 4.02b-467
Mogul : 1.8.5 (274361), CSD as541be (2020)
Xtriage (Phenix) : 1.13
EDS : 2.11
buster-report : 1.1.7 (2018)
Percentile statistics : 20191225.v01 (using entries in the PDB archive December 25th 2019)
Refmac : 5.8.0158
CCP4 : 7.0.044 (Gargrove)
Ideal geometry (proteins) : Engh & Huber (2001)
Ideal geometry (DNA, RNA) : Parkinson et al. (1996)
Validation Pipeline (wwPDB-VP) : 2.11

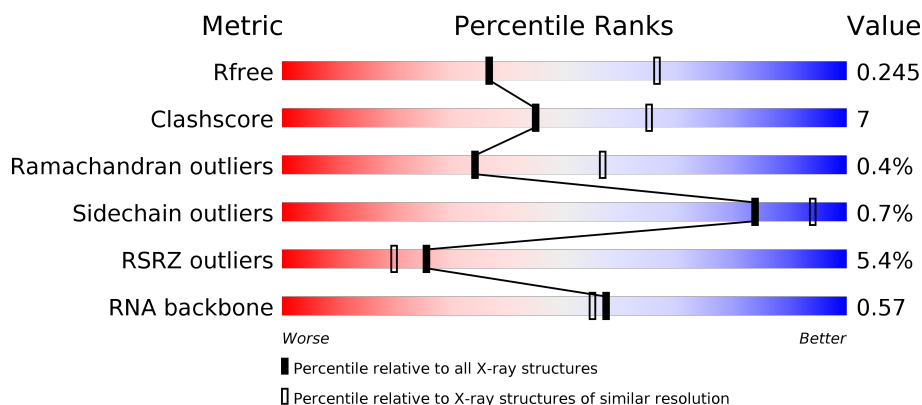
1 Overall quality at a glance

The following experimental techniques were used to determine the structure:

X-RAY DIFFRACTION

The reported resolution of this entry is 2.60 Å.

Percentile scores (ranging between 0-100) for global validation metrics of the entry are shown in the following graphic. The table shows the number of entries on which the scores are based.



Metric	Whole archive (#Entries)	Similar resolution (#Entries, resolution range(Å))
R_{free}	130704	3163 (2.60-2.60)
Clashscore	141614	3518 (2.60-2.60)
Ramachandran outliers	138981	3455 (2.60-2.60)
Sidechain outliers	138945	3455 (2.60-2.60)
RSRZ outliers	127900	3104 (2.60-2.60)
RNA backbone	3102	1040 (2.90-2.30)

The table below summarises the geometric issues observed across the polymeric chains and their fit to the electron density. The red, orange, yellow and green segments on the lower bar indicate the fraction of residues that contain outliers for ≥ 3 , 2, 1 and 0 types of geometric quality criteria respectively. A grey segment represents the fraction of residues that are not modelled. The numeric value for each fraction is indicated below the corresponding segment, with a dot representing fractions $\leq 5\%$. The upper red bar (where present) indicates the fraction of residues that have poor fit to the electron density. The numeric value is given above the bar.

Mol	Chain	Length	Quality of chain
1	A	892	<div> <div>5%</div> <div>80%</div> <div>15%</div> <div>• •</div> </div>
2	B	4	<div> <div>75%</div> <div>25%</div> </div>

2 Entry composition

There are 8 unique types of molecules in this entry. The entry contains 7228 atoms, of which 0 are hydrogens and 0 are deuteriums.

In the tables below, the ZeroOcc column contains the number of atoms modelled with zero occupancy, the AltConf column contains the number of residues with at least one atom in alternate conformation and the Trace column contains the number of residues modelled with at most 2 atoms.

- Molecule 1 is a protein called NS5.

Mol	Chain	Residues	Atoms					ZeroOcc	AltConf	Trace
1	A	852	Total	C	N	O	S	0	1	0
			6839	4312	1223	1257	47			

There are 6 discrepancies between the modelled and reference sequences:

Chain	Residue	Modelled	Actual	Comment	Reference
A	4	SER	-	expression tag	UNP A1XTB9
A	5	MET	-	expression tag	UNP A1XTB9
A	72	ILE	VAL	conflict	UNP A1XTB9
A	366	LEU	MET	conflict	UNP A1XTB9
A	480	VAL	ALA	conflict	UNP A1XTB9
A	748	ILE	LEU	conflict	UNP A1XTB9

- Molecule 2 is a RNA chain called RNA (5'-R(P*AP*GP*UP*U)-3').

Mol	Chain	Residues	Atoms					ZeroOcc	AltConf	Trace
2	B	4	Total	C	N	O	P	0	0	0
			85	38	14	29	4			

- Molecule 3 is ZINC ION (three-letter code: ZN) (formula: Zn).

Mol	Chain	Residues	Atoms		ZeroOcc	AltConf
3	A	2	Total	Zn	0	0
			2	2		

- Molecule 4 is S-ADENOSYL-L-HOMOCYSTEINE (three-letter code: SAH) (formula: C₁₄H₂₀N₆O₅S).

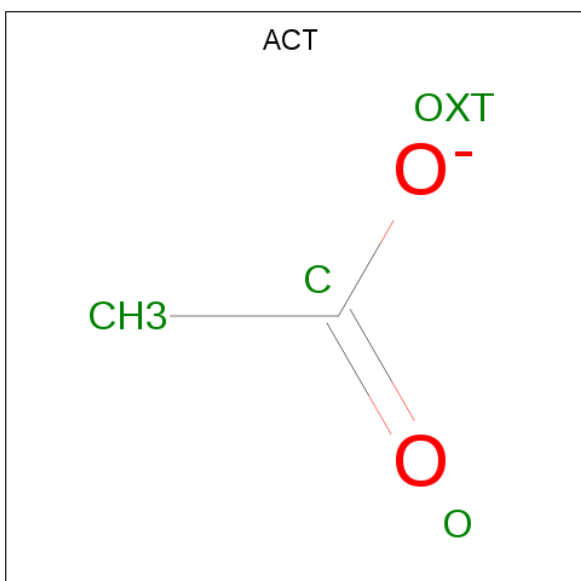


Mol	Chain	Residues	Atoms					ZeroOcc	AltConf
4	A	1	Total	C	N	O	S	0	0
			26	14	6	5	1		

- Molecule 5 is MAGNESIUM ION (three-letter code: MG) (formula: Mg).

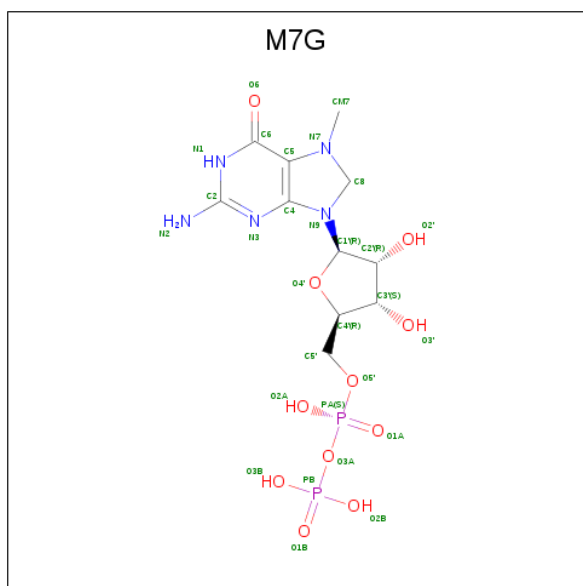
Mol	Chain	Residues	Atoms		ZeroOcc	AltConf
5	B	1	Total	Mg	0	0
			1	1		
5	A	1	Total	Mg	0	0
			1	1		

- Molecule 6 is ACETATE ION (three-letter code: ACT) (formula: C₂H₃O₂).



Mol	Chain	Residues	Atoms			ZeroOcc	AltConf
6	A	1	Total	C	O	0	0
			4	2	2		

- Molecule 7 is 7N-METHYL-8-HYDROGUANOSINE-5'-DIPHOSPHATE (three-letter code: M7G) (formula: $C_{11}H_{19}N_5O_{11}P_2$).



Mol	Chain	Residues	Atoms					ZeroOcc	AltConf
7	B	1	Total	C	N	O	P	0	0
			29	11	5	11	2		

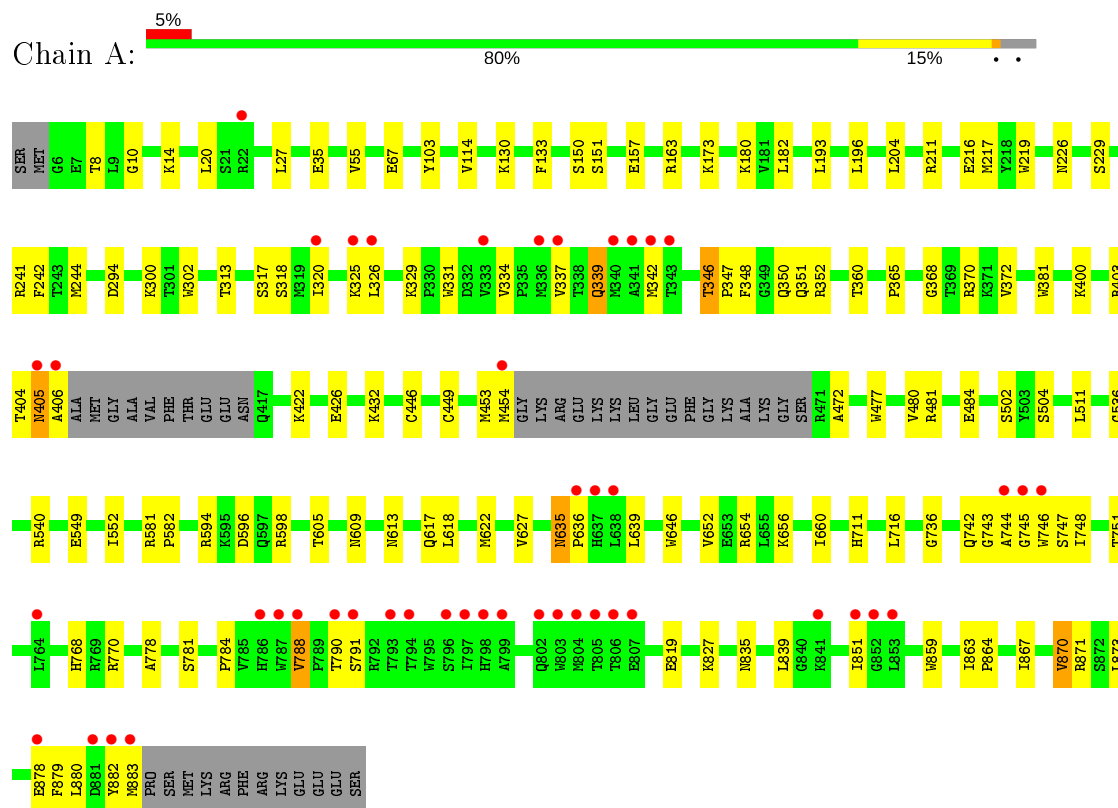
- Molecule 8 is water.

Mol	Chain	Residues	Atoms		ZeroOcc	AltConf
8	A	230	Total	O	0	0
			230	230		
8	B	11	Total	O	0	0
			11	11		

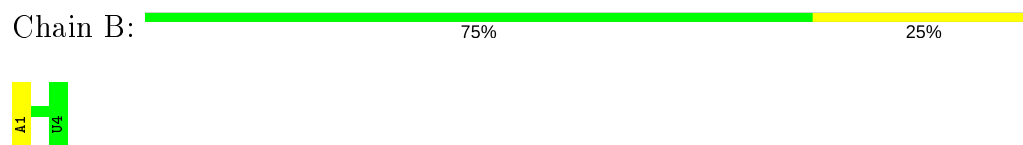
3 Residue-property plots [i](#)

These plots are drawn for all protein, RNA and DNA chains in the entry. The first graphic for a chain summarises the proportions of the various outlier classes displayed in the second graphic. The second graphic shows the sequence view annotated by issues in geometry and electron density. Residues are color-coded according to the number of geometric quality criteria for which they contain at least one outlier: green = 0, yellow = 1, orange = 2 and red = 3 or more. A red dot above a residue indicates a poor fit to the electron density ($RSRZ > 2$). Stretches of 2 or more consecutive residues without any outlier are shown as a green connector. Residues present in the sample, but not in the model, are shown in grey.

- Molecule 1: NS5



- Molecule 2: RNA (5'-R(P*AP*GP*UP*U)-3')



4 Data and refinement statistics

Property	Value	Source
Space group	P 21 21 2	Depositor
Cell constants a, b, c, α , β , γ	94.66 Å 151.39 Å 69.43 Å 90.00° 90.00° 90.00°	Depositor
Resolution (Å)	47.33 – 2.60 47.33 – 2.60	Depositor EDS
% Data completeness (in resolution range)	99.7 (47.33-2.60) 99.7 (47.33-2.60)	Depositor EDS
R_{merge}	(Not available)	Depositor
R_{sym}	(Not available)	Depositor
$\langle I/\sigma(I) \rangle$ ¹	1.94 (at 2.61 Å)	Xtriage
Refinement program	PHENIX 1.9_1692	Depositor
R, R_{free}	0.183 , 0.244 0.186 , 0.245	Depositor DCC
R_{free} test set	1576 reflections (5.04%)	wwPDB-VP
Wilson B-factor (Å ²)	39.2	Xtriage
Anisotropy	0.549	Xtriage
Bulk solvent k_{sol} (e/Å ³), B_{sol} (Å ²)	0.35 , 48.7	EDS
L-test for twinning ²	$\langle L \rangle = 0.49$, $\langle L^2 \rangle = 0.32$	Xtriage
Estimated twinning fraction	No twinning to report.	Xtriage
F_o, F_c correlation	0.94	EDS
Total number of atoms	7228	wwPDB-VP
Average B, all atoms (Å ²)	45.0	wwPDB-VP

Xtriage's analysis on translational NCS is as follows: *The largest off-origin peak in the Patterson function is 3.58% of the height of the origin peak. No significant pseudotranslation is detected.*

¹Intensities estimated from amplitudes.

²Theoretical values of $\langle |L| \rangle$, $\langle L^2 \rangle$ for acentric reflections are 0.5, 0.333 respectively for untwinned datasets, and 0.375, 0.2 for perfectly twinned datasets.

5 Model quality

5.1 Standard geometry

Bond lengths and bond angles in the following residue types are not validated in this section: ZN, SAH, M7G, MG, ACT

The Z score for a bond length (or angle) is the number of standard deviations the observed value is removed from the expected value. A bond length (or angle) with $|Z| > 5$ is considered an outlier worth inspection. RMSZ is the root-mean-square of all Z scores of the bond lengths (or angles).

Mol	Chain	Bond lengths		Bond angles	
		RMSZ	$\# Z > 5$	RMSZ	$\# Z > 5$
1	A	0.24	0/7006	0.43	0/9483
2	B	0.16	0/94	0.72	0/144
All	All	0.24	0/7100	0.44	0/9627

There are no bond length outliers.

There are no bond angle outliers.

There are no chirality outliers.

There are no planarity outliers.

5.2 Too-close contacts

In the following table, the Non-H and H(model) columns list the number of non-hydrogen atoms and hydrogen atoms in the chain respectively. The H(added) column lists the number of hydrogen atoms added and optimized by MolProbity. The Clashes column lists the number of clashes within the asymmetric unit, whereas Symm-Clashes lists symmetry related clashes.

Mol	Chain	Non-H	H(model)	H(added)	Clashes	Symm-Clashes
1	A	6839	0	6726	89	0
2	B	85	0	43	1	0
3	A	2	0	0	0	0
4	A	26	0	19	1	0
5	A	1	0	0	0	0
5	B	1	0	0	0	0
6	A	4	0	3	0	0
7	B	29	0	16	1	0
8	A	230	0	0	4	0
8	B	11	0	0	1	0
All	All	7228	0	6807	90	0

The all-atom clashscore is defined as the number of clashes found per 1000 atoms (including hydrogen atoms). The all-atom clashscore for this structure is 7.

All (90) close contacts within the same asymmetric unit are listed below, sorted by their clash magnitude.

Atom-1	Atom-2	Interatomic distance (Å)	Clash overlap (Å)
1:A:744:ALA:HB1	1:A:747:SER:HB3	1.78	0.66
1:A:294:ASP:OD2	1:A:581:ARG:NH2	2.27	0.66
1:A:326:LEU:HD11	1:A:870:VAL:HG13	1.78	0.65
1:A:480:VAL:HG22	1:A:481:ARG:HH12	1.61	0.65
1:A:781:SER:HB3	1:A:882:TYR:H	1.61	0.65
1:A:870:VAL:HA	1:A:873:LEU:HB2	1.78	0.65
1:A:716:LEU:HD21	1:A:839:LEU:HD23	1.79	0.65
1:A:339:GLN:O	1:A:342:MET:HG2	1.96	0.64
1:A:819:GLU:HA	1:A:827:LYS:HD2	1.80	0.63
1:A:55:VAL:HG21	1:A:114:VAL:HB	1.80	0.63
1:A:403:ARG:NH1	1:A:426:GLU:OE2	2.33	0.61
1:A:404:THR:O	1:A:406:ALA:N	2.26	0.61
1:A:778:ALA:HA	1:A:867:ILE:HD11	1.82	0.61
1:A:300:LYS:NZ	8:A:1106:HOH:O	2.34	0.60
1:A:481:ARG:NH1	1:A:484:GLU:OE2	2.34	0.60
1:A:320:ILE:HG21	1:A:325:LYS:HD2	1.85	0.59
1:A:180:LYS:NZ	2:B:1:A:O2'	2.35	0.58
1:A:67:GLU:OE2	1:A:352:ARG:NE	2.23	0.58
1:A:594:ARG:NH1	1:A:596:ASP:OD1	2.37	0.58
1:A:863:ILE:HG13	1:A:864:PRO:HD3	1.86	0.56
4:A:1003:SAH:H8	8:B:211:HOH:O	2.04	0.56
1:A:35:GLU:OE2	1:A:211:ARG:NH2	2.38	0.56
1:A:835:ASN:ND2	8:A:1111:HOH:O	2.39	0.56
1:A:331:TRP:HA	1:A:334:VAL:HG12	1.88	0.55
1:A:598:ARG:NH1	1:A:609:ASN:OD1	2.35	0.55
1:A:241:ARG:HA	1:A:244:MET:HG2	1.88	0.55
1:A:226:ASN:HD22	1:A:229:SER:HB2	1.71	0.54
1:A:350:GLN:HE22	1:A:454:MET:HA	1.72	0.54
1:A:477:TRP:HA	1:A:480:VAL:HG12	1.90	0.53
1:A:351:GLN:HG3	1:A:582:PRO:HD2	1.90	0.53
1:A:867:ILE:O	1:A:871:ARG:HG3	2.09	0.52
1:A:346:THR:HG22	1:A:348:PHE:H	1.76	0.51
1:A:337:VAL:HG13	1:A:736:GLY:HA2	1.92	0.51
1:A:14:LYS:NZ	7:B:0:M7G:O2'	2.44	0.51
1:A:405:ASN:OD1	1:A:422:LYS:HD2	2.11	0.51
1:A:871:ARG:HD2	1:A:879:PHE:CG	2.46	0.50
1:A:639:LEU:H	1:A:639:LEU:HD12	1.77	0.50

Continued on next page...

Continued from previous page...

Atom-1	Atom-2	Interatomic distance (Å)	Clash overlap (Å)
1:A:770:ARG:HD2	1:A:851:ILE:HD13	1.94	0.49
1:A:481:ARG:HH11	1:A:481:ARG:HA	1.78	0.49
1:A:446:CYS:SG	1:A:449:CYS:HB2	2.52	0.48
1:A:150:SER:HA	1:A:182:LEU:HD21	1.96	0.48
1:A:180:LYS:HE2	1:A:216:GLU:OE2	2.14	0.48
1:A:788:VAL:HG13	1:A:790:THR:HG23	1.96	0.48
1:A:748:ILE:HA	1:A:751:THR:HG22	1.95	0.47
1:A:880:LEU:HD12	1:A:880:LEU:HA	1.58	0.47
1:A:329:LYS:HD2	1:A:859:TRP:HD1	1.78	0.47
1:A:627:VAL:HG21	1:A:646:TRP:CD1	2.50	0.47
1:A:360:THR:O	1:A:594:ARG:NH2	2.48	0.47
1:A:784:PRO:HA	1:A:878:GLU:O	2.15	0.46
1:A:549:GLU:CD	1:A:598:ARG:HH22	2.19	0.46
1:A:10:GLY:N	8:A:1131:HOH:O	2.48	0.46
1:A:381:TRP:CE3	1:A:552:ILE:HD13	2.50	0.46
1:A:8:THR:HG23	1:A:10:GLY:H	1.81	0.46
1:A:204:LEU:HD22	1:A:217:MET:HB3	1.98	0.46
1:A:20:LEU:HD11	1:A:242:PHE:HE1	1.81	0.46
1:A:313:THR:O	1:A:347:PRO:HD3	2.16	0.46
1:A:536:GLY:O	1:A:540:ARG:HG2	2.16	0.45
1:A:768:HIS:CD2	1:A:768:HIS:H	2.34	0.45
1:A:133:PHE:CE1	1:A:163:ARG:HG2	2.52	0.45
1:A:635:ASN:HA	1:A:636:PRO:HD3	1.69	0.45
1:A:365:PRO:O	1:A:370:ARG:NH1	2.50	0.44
1:A:480:VAL:HG22	1:A:481:ARG:NH1	2.30	0.44
1:A:598:ARG:HD3	1:A:605:THR:HG23	1.99	0.44
1:A:400:LYS:O	8:A:1101:HOH:O	2.21	0.44
1:A:502:SER:O	1:A:504:SER:N	2.46	0.43
1:A:103:TYR:CD1	1:A:130:LYS:HG2	2.53	0.43
1:A:196:LEU:HB3	1:A:219:TRP:CH2	2.53	0.43
1:A:350:GLN:HE22	1:A:453:MET:C	2.21	0.43
1:A:368:GLY:O	1:A:372:VAL:HG23	2.18	0.43
1:A:613:ASN:O	1:A:617:GLN:HG2	2.18	0.43
1:A:173:LYS:HB2	1:A:173:LYS:HE3	1.78	0.43
1:A:432:LYS:HA	1:A:432:LYS:HD3	1.88	0.43
1:A:504:SER:HB3	1:A:660:ILE:HG12	2.01	0.42
1:A:511:LEU:HD21	1:A:711:HIS:CE1	2.54	0.42
1:A:302:TRP:CE3	1:A:594:ARG:HB2	2.54	0.42
1:A:151:SER:HB3	1:A:157:GLU:HG3	2.02	0.42
1:A:193:LEU:HD13	1:A:204:LEU:HD11	2.02	0.42
1:A:745:GLY:HA2	1:A:746:TRP:HA	1.72	0.42

Continued on next page...

Continued from previous page...

Atom-1	Atom-2	Interatomic distance (Å)	Clash overlap (Å)
1:A:317:SER:OG	1:A:318:SER:N	2.52	0.41
1:A:883:MET:HG2	1:A:883:MET:H	1.61	0.41
1:A:103:TYR:HD1	1:A:130:LYS:HG2	1.86	0.41
1:A:618:LEU:O	1:A:622:MET:HG3	2.20	0.41
1:A:618:LEU:HA	1:A:618:LEU:HD23	1.93	0.41
1:A:27:LEU:HA	1:A:27:LEU:HD23	1.91	0.41
1:A:646:TRP:CZ2	1:A:654:ARG:HG3	2.56	0.41
1:A:204:LEU:HD23	1:A:204:LEU:HA	1.95	0.40
1:A:652:VAL:HG12	1:A:656:LYS:HE3	2.03	0.40
1:A:639:LEU:H	1:A:639:LEU:CD1	2.35	0.40
1:A:639:LEU:N	1:A:639:LEU:HD12	2.36	0.40
1:A:742:GLN:N	1:A:743:GLY:HA2	2.36	0.40

There are no symmetry-related clashes.

5.3 Torsion angles [i](#)

5.3.1 Protein backbone [i](#)

In the following table, the Percentiles column shows the percent Ramachandran outliers of the chain as a percentile score with respect to all X-ray entries followed by that with respect to entries of similar resolution.

The Analysed column shows the number of residues for which the backbone conformation was analysed, and the total number of residues.

Mol	Chain	Analysed	Favoured	Allowed	Outliers	Percentiles
1	A	847/892 (95%)	805 (95%)	39 (5%)	3 (0%)	34 57

All (3) Ramachandran outliers are listed below:

Mol	Chain	Res	Type
1	A	405	ASN
1	A	791	SER
1	A	472	ALA

5.3.2 Protein sidechains [i](#)

In the following table, the Percentiles column shows the percent sidechain outliers of the chain as a percentile score with respect to all X-ray entries followed by that with respect to entries of similar

resolution.

The Analysed column shows the number of residues for which the sidechain conformation was analysed, and the total number of residues.

Mol	Chain	Analysed	Rotameric	Outliers	Percentiles	
1	A	738/781 (94%)	733 (99%)	5 (1%)	84	94

All (5) residues with a non-rotameric sidechain are listed below:

Mol	Chain	Res	Type
1	A	339	GLN
1	A	346	THR
1	A	635	ASN
1	A	788	VAL
1	A	870	VAL

Some sidechains can be flipped to improve hydrogen bonding and reduce clashes. All (4) such sidechains are listed below:

Mol	Chain	Res	Type
1	A	226	ASN
1	A	350	GLN
1	A	573	GLN
1	A	701	HIS

5.3.3 RNA ⓘ

Mol	Chain	Analysed	Backbone Outliers	Pucker Outliers
2	B	3/4 (75%)	0	0

There are no RNA backbone outliers to report.

There are no RNA pucker outliers to report.

5.4 Non-standard residues in protein, DNA, RNA chains ⓘ

There are no non-standard protein/DNA/RNA residues in this entry.

5.5 Carbohydrates ⓘ

There are no carbohydrates in this entry.

5.6 Ligand geometry

Of 7 ligands modelled in this entry, 4 are monoatomic - leaving 3 for Mogul analysis.

In the following table, the Counts columns list the number of bonds (or angles) for which Mogul statistics could be retrieved, the number of bonds (or angles) that are observed in the model and the number of bonds (or angles) that are defined in the Chemical Component Dictionary. The Link column lists molecule types, if any, to which the group is linked. The Z score for a bond length (or angle) is the number of standard deviations the observed value is removed from the expected value. A bond length (or angle) with $|Z| > 2$ is considered an outlier worth inspection. RMSZ is the root-mean-square of all Z scores of the bond lengths (or angles).

Mol	Type	Chain	Res	Link	Bond lengths			Bond angles		
					Counts	RMSZ	# Z > 2	Counts	RMSZ	# Z > 2
7	M7G	B	0	2,5	28,31,31	4.08	15 (53%)	39,49,49	1.71	8 (20%)
6	ACT	A	1005	-	1,3,3	1.35	0	0,3,3	0.00	-
4	SAH	A	1003	-	21,28,28	1.18	2 (9%)	20,40,40	1.76	3 (15%)

In the following table, the Chirals column lists the number of chiral outliers, the number of chiral centers analysed, the number of these observed in the model and the number defined in the Chemical Component Dictionary. Similar counts are reported in the Torsion and Rings columns. '-' means no outliers of that kind were identified.

Mol	Type	Chain	Res	Link	Chirals	Torsions	Rings
7	M7G	B	0	2,5	-	4/16/44/44	0/3/3/3
4	SAH	A	1003	-	-	0/7/31/31	0/3/3/3

All (17) bond length outliers are listed below:

Mol	Chain	Res	Type	Atoms	Z	Observed(Å)	Ideal(Å)
7	B	0	M7G	C2'-C3'	-10.40	1.24	1.53
7	B	0	M7G	C1'-N9	-7.30	1.32	1.46
7	B	0	M7G	C4-N3	6.93	1.43	1.34
7	B	0	M7G	C2-N2	6.14	1.46	1.33
7	B	0	M7G	C2-N1	5.82	1.45	1.35
7	B	0	M7G	O4'-C4'	-5.72	1.32	1.45
7	B	0	M7G	C6-C5	5.51	1.49	1.41
7	B	0	M7G	C6-N1	4.98	1.41	1.33
7	B	0	M7G	C3'-C4'	4.93	1.65	1.53
7	B	0	M7G	C2-N3	4.68	1.43	1.35
4	A	1003	SAH	C2-N3	4.02	1.38	1.32
7	B	0	M7G	O4'-C1'	3.67	1.50	1.42
7	B	0	M7G	O3'-C3'	2.48	1.48	1.43
4	A	1003	SAH	C2-N1	2.47	1.38	1.33
7	B	0	M7G	C2'-C1'	2.46	1.61	1.53

Continued on next page...

Continued from previous page...

Mol	Chain	Res	Type	Atoms	Z	Observed(Å)	Ideal(Å)
7	B	0	M7G	C5-C4	2.09	1.43	1.39
7	B	0	M7G	O2'-C2'	2.06	1.47	1.43

All (11) bond angle outliers are listed below:

Mol	Chain	Res	Type	Atoms	Z	Observed(°)	Ideal(°)
4	A	1003	SAH	N3-C2-N1	-5.34	120.33	128.68
4	A	1003	SAH	C5'-SD-CG	-4.29	89.41	102.27
7	B	0	M7G	C6-C5-C4	4.07	119.56	115.20
7	B	0	M7G	C5-C4-N3	-3.91	120.10	126.49
7	B	0	M7G	N1-C2-N3	-3.42	120.06	125.42
7	B	0	M7G	C5-C4-N9	3.16	110.88	106.44
7	B	0	M7G	N7-C8-N9	2.83	107.42	103.38
7	B	0	M7G	C6-N1-C2	2.52	119.93	115.93
7	B	0	M7G	C2-N3-C4	2.46	120.68	113.89
4	A	1003	SAH	C3'-C2'-C1'	2.33	104.48	100.98
7	B	0	M7G	PA-O3A-PB	-2.24	125.13	132.83

There are no chirality outliers.

All (4) torsion outliers are listed below:

Mol	Chain	Res	Type	Atoms
7	B	0	M7G	C5'-O5'-PA-O3A
7	B	0	M7G	C5'-O5'-PA-O1A
7	B	0	M7G	C5'-O5'-PA-O2A
7	B	0	M7G	PB-O3A-PA-O1A

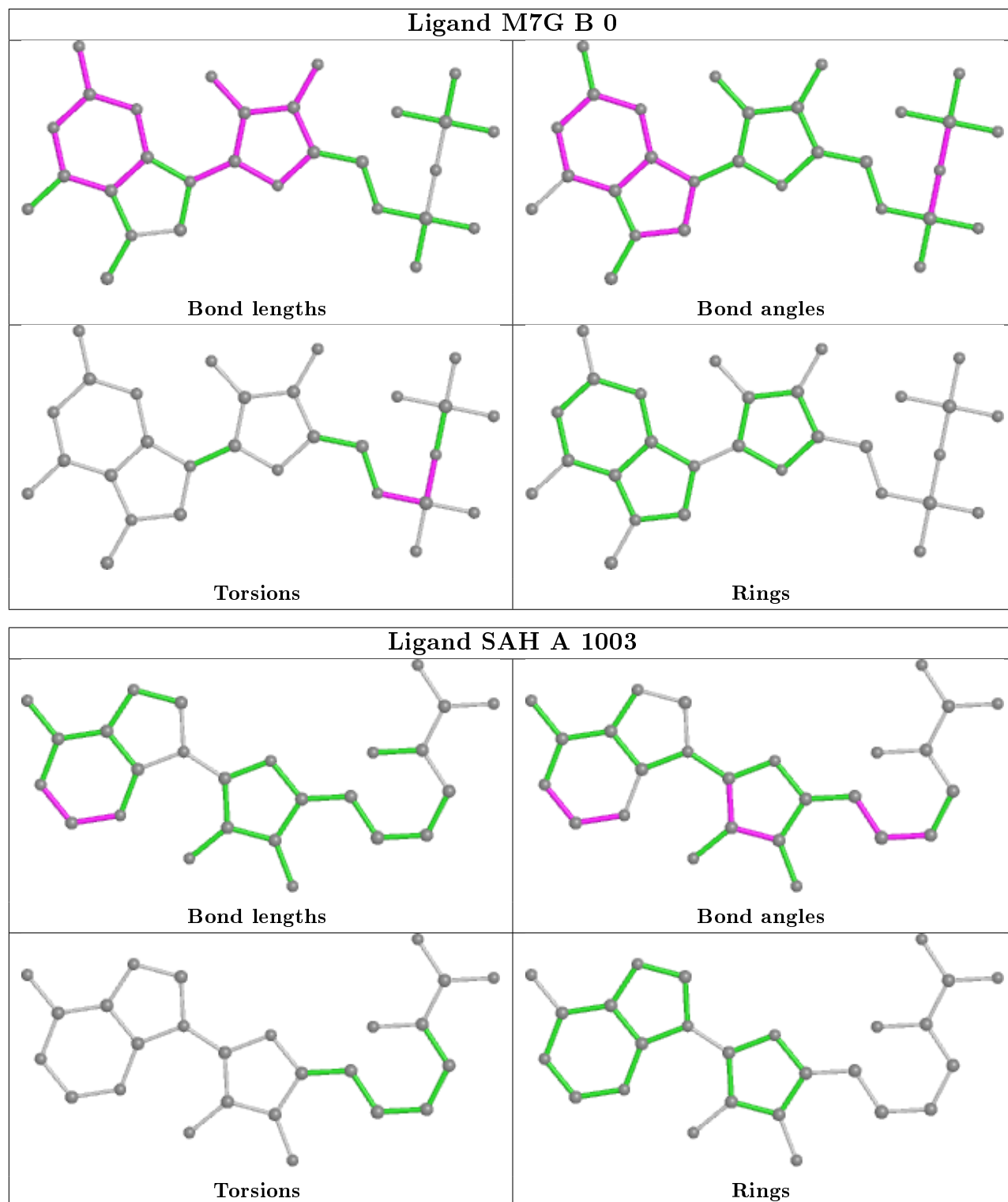
There are no ring outliers.

2 monomers are involved in 2 short contacts:

Mol	Chain	Res	Type	Clashes	Symm-Clashes
7	B	0	M7G	1	0
4	A	1003	SAH	1	0

The following is a two-dimensional graphical depiction of Mogul quality analysis of bond lengths, bond angles, torsion angles, and ring geometry for all instances of the Ligand of Interest. In addition, ligands with molecular weight > 250 and outliers as shown on the validation Tables will also be included. For torsion angles, if less than 5% of the Mogul distribution of torsion angles is within 10 degrees of the torsion angle in question, then that torsion angle is considered an outlier. Any bond that is central to one or more torsion angles identified as an outlier by Mogul will be highlighted in the graph. For rings, the root-mean-square deviation (RMSD) between the ring

in question and similar rings identified by Mogul is calculated over all ring torsion angles. If the average RMSD is greater than 60 degrees and the minimal RMSD between the ring in question and any Mogul-identified rings is also greater than 60 degrees, then that ring is considered an outlier. The outliers are highlighted in purple. The color gray indicates Mogul did not find sufficient equivalents in the CSD to analyse the geometry.



5.7 Other polymers [i](#)

There are no such residues in this entry.

5.8 Polymer linkage issues [i](#)

There are no chain breaks in this entry.

6 Fit of model and data ⓘ

6.1 Protein, DNA and RNA chains ⓘ

In the following table, the column labelled ‘#RSRZ> 2’ contains the number (and percentage) of RSRZ outliers, followed by percent RSRZ outliers for the chain as percentile scores relative to all X-ray entries and entries of similar resolution. The OWAB column contains the minimum, median, 95th percentile and maximum values of the occupancy-weighted average B-factor per residue. The column labelled ‘Q< 0.9’ lists the number of (and percentage) of residues with an average occupancy less than 0.9.

Mol	Chain	Analysed	<RSRZ>	#RSRZ>2	OWAB(Å ²)	Q<0.9
1	A	852/892 (95%)	0.02	46 (5%) 25 20	19, 38, 95, 132	4 (0%)
2	B	4/4 (100%)	0.11	0 100 100	73, 76, 82, 95	0
All	All	856/896 (95%)	0.02	46 (5%) 25 20	19, 38, 95, 132	4 (0%)

All (46) RSRZ outliers are listed below:

Mol	Chain	Res	Type	RSRZ
1	A	883	MET	7.6
1	A	791	SER	7.2
1	A	788	VAL	6.8
1	A	406	ALA	5.0
1	A	454	MET	4.7
1	A	636	PRO	4.5
1	A	794	THR	4.5
1	A	881	ASP	4.5
1	A	882	TYR	4.4
1	A	333	VAL	4.4
1	A	804	MET	4.3
1	A	798	HIS	4.2
1	A	790	THR	4.0
1	A	638	LEU	3.6
1	A	802	GLN	3.6
1	A	22	ARG	3.5
1	A	853	LEU	3.6
1	A	326	LEU	3.4
1	A	878	GLU	3.4
1	A	803	TRP	3.3
1	A	797	ILE	3.3
1	A	340	MET	3.2
1	A	806	THR	3.2
1	A	786	HIS	3.2

Continued on next page...

Continued from previous page...

Mol	Chain	Res	Type	RSRZ
1	A	337	VAL	3.1
1	A	805	THR	3.0
1	A	745	GLY	3.0
1	A	851	ILE	2.9
1	A	807	GLU	2.9
1	A	336	MET	2.8
1	A	852	GLY	2.8
1	A	405	ASN	2.7
1	A	637	HIS	2.7
1	A	342	MET	2.7
1	A	799	ALA	2.5
1	A	343	THR	2.4
1	A	787	TRP	2.4
1	A	841	LYS	2.4
1	A	793	THR	2.3
1	A	764	LEU	2.3
1	A	325	LYS	2.2
1	A	796	SER	2.2
1	A	320	ILE	2.2
1	A	341	ALA	2.1
1	A	744	ALA	2.1
1	A	746	TRP	2.0

6.2 Non-standard residues in protein, DNA, RNA chains [i](#)

There are no non-standard protein/DNA/RNA residues in this entry.

6.3 Carbohydrates [i](#)

There are no carbohydrates in this entry.

6.4 Ligands [i](#)

In the following table, the Atoms column lists the number of modelled atoms in the group and the number defined in the chemical component dictionary. The B-factors column lists the minimum, median, 95th percentile and maximum values of B factors of atoms in the group. The column labelled 'Q< 0.9' lists the number of atoms with occupancy less than 0.9.

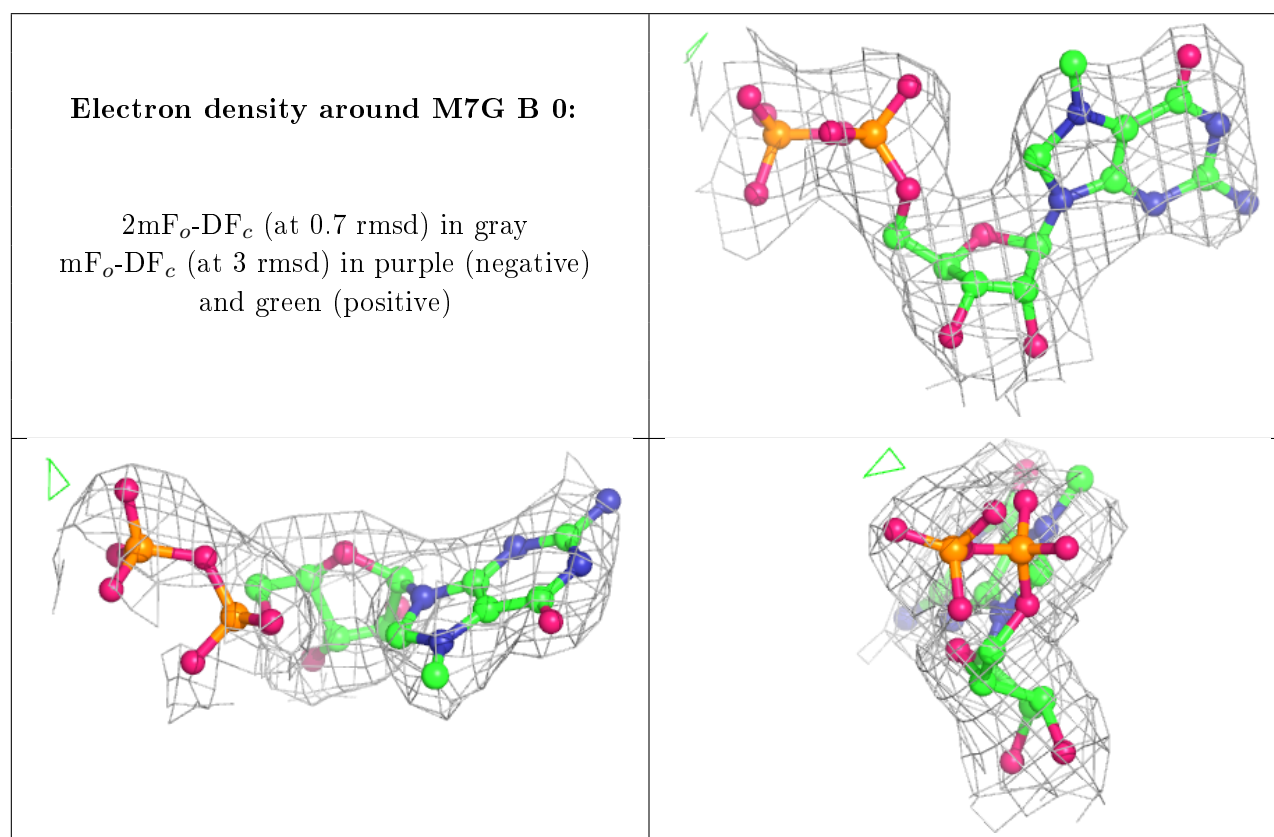
Mol	Type	Chain	Res	Atoms	RSCC	RSR	B-factors(\AA^2)	Q<0.9
5	MG	B	102	1/1	0.90	0.09	68,68,68,68	0

Continued on next page...

Continued from previous page...

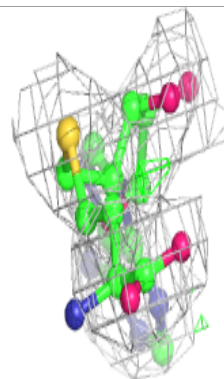
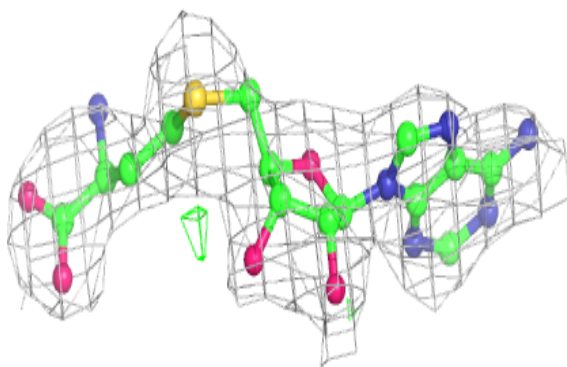
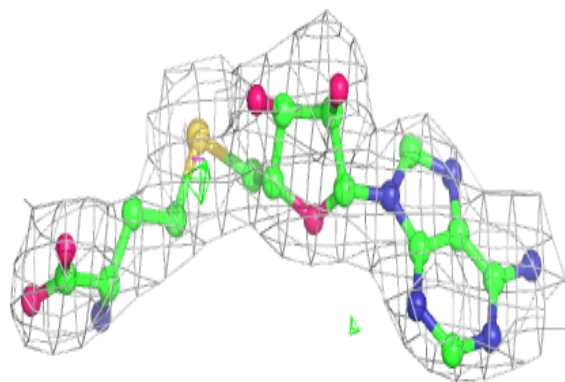
Mol	Type	Chain	Res	Atoms	RSCC	RSR	B-factors(\AA^2)	Q<0.9
6	ACT	A	1005	4/4	0.91	0.19	37,40,43,44	0
7	M7G	B	0	29/29	0.94	0.15	70,72,76,78	0
4	SAH	A	1003	26/26	0.95	0.15	37,44,49,53	0
3	ZN	A	1001	1/1	0.98	0.13	31,31,31,31	0
3	ZN	A	1002	1/1	0.99	0.07	42,42,42,42	0
5	MG	A	1004	1/1	0.99	0.07	24,24,24,24	0

The following is a graphical depiction of the model fit to experimental electron density of all instances of the Ligand of Interest. In addition, ligands with molecular weight > 250 and outliers as shown on the geometry validation Tables will also be included. Each fit is shown from different orientation to approximate a three-dimensional view.



Electron density around SAH A 1003:

$2mF_o-DF_c$ (at 0.7 rmsd) in gray
 mF_o-DF_c (at 3 rmsd) in purple (negative)
and green (positive)



6.5 Other polymers [i](#)

There are no such residues in this entry.