



Full wwPDB X-ray Structure Validation Report ⓘ

Aug 22, 2020 – 08:31 PM BST

PDB ID : 6DTP
Title : CRYSTAL STRUCTURE OF HUMAN 17BETA-HYDROXYSTEROID
DEHYDROGENASE TYPE 1 COMPLEXED WITH EM139
Authors : Li, T.; Lin, S.X.
Deposited on : 2018-06-18
Resolution : 2.00 Å(reported)

This is a Full wwPDB X-ray Structure Validation Report for a publicly released PDB entry.

We welcome your comments at validation@mail.wwpdb.org

A user guide is available at

<https://www.wwpdb.org/validation/2017/XrayValidationReportHelp>

with specific help available everywhere you see the ⓘ symbol.

The following versions of software and data (see [references ⓘ](#)) were used in the production of this report:

MolProbity : 4.02b-467
Mogul : 1.8.5 (274361), CSD as541be (2020)
Xtriage (Phenix) : 1.13
EDS : 2.13.1
buster-report : 1.1.7 (2018)
Percentile statistics : 20191225.v01 (using entries in the PDB archive December 25th 2019)
Refmac : 5.8.0158
CCP4 : 7.0.044 (Gargrove)
Ideal geometry (proteins) : Engh & Huber (2001)
Ideal geometry (DNA, RNA) : Parkinson et al. (1996)
Validation Pipeline (wwPDB-VP) : 2.13.1

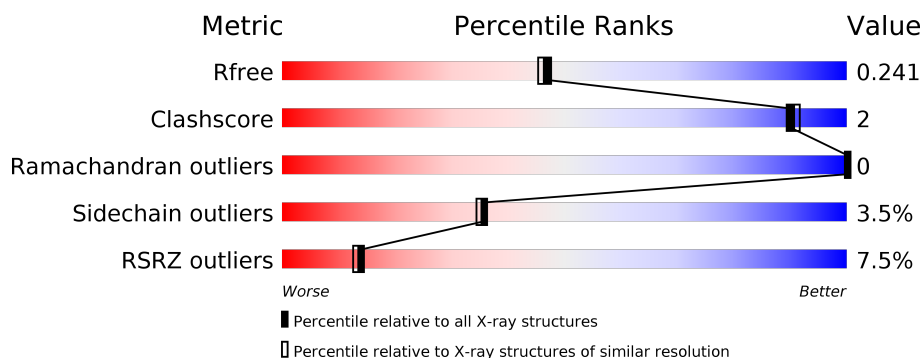
1 Overall quality at a glance

The following experimental techniques were used to determine the structure:

X-RAY DIFFRACTION

The reported resolution of this entry is 2.00 Å.

Percentile scores (ranging between 0-100) for global validation metrics of the entry are shown in the following graphic. The table shows the number of entries on which the scores are based.



Metric	Whole archive (#Entries)	Similar resolution (#Entries, resolution range(Å))
R_{free}	130704	8085 (2.00-2.00)
Clashscore	141614	9178 (2.00-2.00)
Ramachandran outliers	138981	9054 (2.00-2.00)
Sidechain outliers	138945	9053 (2.00-2.00)
RSRZ outliers	127900	7900 (2.00-2.00)

The table below summarises the geometric issues observed across the polymeric chains and their fit to the electron density. The red, orange, yellow and green segments on the lower bar indicate the fraction of residues that contain outliers for ≥ 3 , 2, 1 and 0 types of geometric quality criteria respectively. A grey segment represents the fraction of residues that are not modelled. The numeric value for each fraction is indicated below the corresponding segment, with a dot representing fractions $\leq 5\%$. The upper red bar (where present) indicates the fraction of residues that have poor fit to the electron density. The numeric value is given above the bar.

Mol	Chain	Length	Quality of chain
1	A	328	<div> <div>5%</div> <div> <div></div> <div>77%</div> <div>7%</div> <div>15%</div> </div> </div>
1	B	328	<div> <div>8%</div> <div> <div></div> <div>81%</div> <div>•</div> <div>15%</div> </div> </div>

2 Entry composition [i](#)

There are 7 unique types of molecules in this entry. The entry contains 4453 atoms, of which 0 are hydrogens and 0 are deuteriums.

In the tables below, the ZeroOcc column contains the number of atoms modelled with zero occupancy, the AltConf column contains the number of residues with at least one atom in alternate conformation and the Trace column contains the number of residues modelled with at most 2 atoms.

- Molecule 1 is a protein called Estradiol 17-beta-dehydrogenase 1.

Mol	Chain	Residues	Atoms					ZeroOcc	AltConf	Trace
1	A	279	Total	C	N	O	S	0	1	0
			2137	1356	379	391	11			
1	B	278	Total	C	N	O	S	0	4	0
			2151	1365	382	393	11			

- Molecule 2 is GLYCEROL (three-letter code: GOL) (formula: C₃H₈O₃).



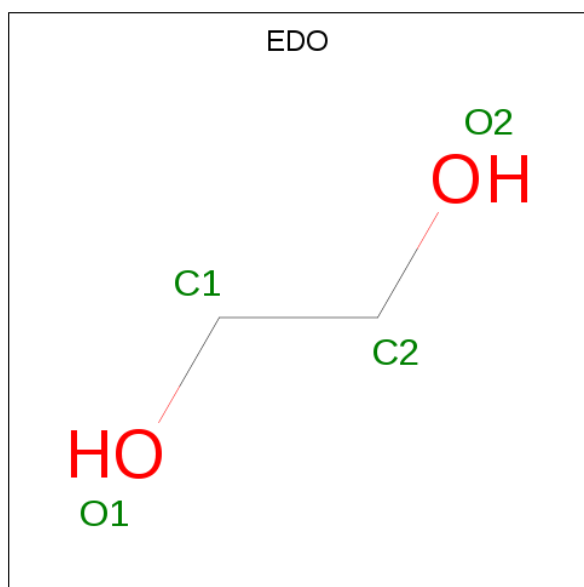
Mol	Chain	Residues	Atoms			ZeroOcc	AltConf
2	A	1	Total	C	O	0	0
			6	3	3		
2	A	1	Total	C	O	0	0
			6	3	3		
2	A	1	Total	C	O	0	0
			6	3	3		
2	A	1	Total	C	O	0	0
			6	3	3		

Continued on next page...

Continued from previous page...

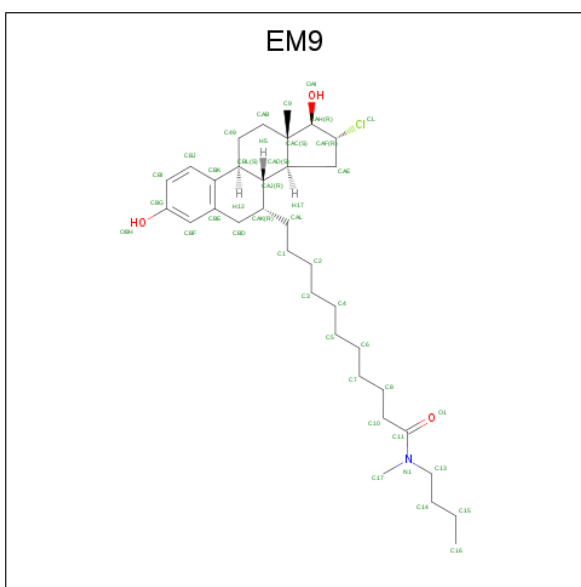
Mol	Chain	Residues	Atoms			ZeroOcc	AltConf
2	A	1	Total	C	O	0	0
			6	3	3		
2	B	1	Total	C	O	0	0
			6	3	3		
2	B	1	Total	C	O	0	0
			6	3	3		

- Molecule 3 is 1,2-ETHANEDIOL (three-letter code: EDO) (formula: $C_2H_6O_2$).



Mol	Chain	Residues	Atoms			ZeroOcc	AltConf
3	A	1	Total	C	O	0	0
			4	2	2		
3	A	1	Total	C	O	0	0
			4	2	2		
3	B	1	Total	C	O	0	0
			4	2	2		
3	B	1	Total	C	O	0	0
			4	2	2		

- Molecule 4 is N-butyl-11-[(7 α ,9 β ,13 α ,14 β ,16 α ,17 α)-16-chloro-3,17-dihydroxyestra-1,3,5(10)-trien-7-yl]-N-methylundecanamide (three-letter code: EM9) (formula: $C_{34}H_{54}ClNO_3$) (labeled as "Ligand of Interest" by author).



Mol	Chain	Residues	Atoms			ZeroOcc	AltConf
4	A	1	Total	C	Cl	O	
			22	19	1	2	

- Molecule 5 is TRIETHYLENE GLYCOL (three-letter code: PGE) (formula: $C_6H_{14}O_4$).



Mol	Chain	Residues	Atoms			ZeroOcc	AltConf
5	A	1	Total	C	O		
			10	6	4		

- Molecule 6 is DI(HYDROXYETHYL)ETHER (three-letter code: PEG) (formula: $C_4H_{10}O_3$).



Mol	Chain	Residues	Atoms			ZeroOcc	AltConf
6	B	1	Total	C	O	0	0
			7	4	3		

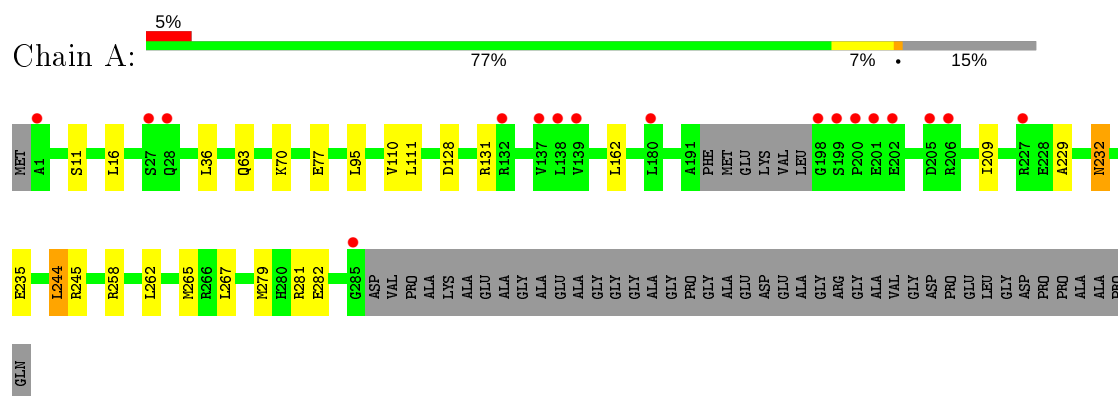
- Molecule 7 is water.

Mol	Chain	Residues	Atoms		ZeroOcc	AltConf
7	A	34	Total	O	0	0
			34	34		
7	B	34	Total	O	0	0
			34	34		

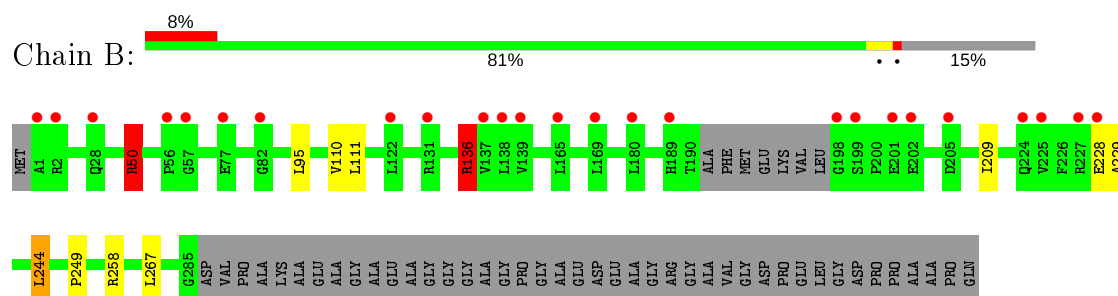
3 Residue-property plots

These plots are drawn for all protein, RNA, DNA and oligosaccharide chains in the entry. The first graphic for a chain summarises the proportions of the various outlier classes displayed in the second graphic. The second graphic shows the sequence view annotated by issues in geometry and electron density. Residues are color-coded according to the number of geometric quality criteria for which they contain at least one outlier: green = 0, yellow = 1, orange = 2 and red = 3 or more. A red dot above a residue indicates a poor fit to the electron density ($RSRZ > 2$). Stretches of 2 or more consecutive residues without any outlier are shown as a green connector. Residues present in the sample, but not in the model, are shown in grey.

• Molecule 1: Estradiol 17-beta-dehydrogenase 1



• Molecule 1: Estradiol 17-beta-dehydrogenase 1



4 Data and refinement statistics

Property	Value	Source
Space group	I 1 2 1	Depositor
Cell constants a, b, c, α , β , γ	120.76 Å 42.19 Å 122.67 Å 90.00° 102.07° 90.00°	Depositor
Resolution (Å)	35.67 – 2.00 35.68 – 2.00	Depositor EDS
% Data completeness (in resolution range)	91.9 (35.67-2.00) 91.9 (35.68-2.00)	Depositor EDS
R_{merge}	(Not available)	Depositor
R_{sym}	0.07	Depositor
$\langle I/\sigma(I) \rangle$ ¹	2.80 (at 2.00 Å)	Xtriage
Refinement program	REFMAC 5.8.0135	Depositor
R, R_{free}	0.191 , 0.234 0.200 , 0.241	Depositor DCC
R_{free} test set	1963 reflections (5.15%)	wwPDB-VP
Wilson B-factor (Å ²)	30.5	Xtriage
Anisotropy	0.948	Xtriage
Bulk solvent k_{sol} (e/Å ³), B_{sol} (Å ²)	0.46 , 60.9	EDS
L-test for twinning ²	$\langle L \rangle = 0.48$, $\langle L^2 \rangle = 0.31$	Xtriage
Estimated twinning fraction	0.008 for l,-k,h	Xtriage
F_o, F_c correlation	0.95	EDS
Total number of atoms	4453	wwPDB-VP
Average B, all atoms (Å ²)	42.0	wwPDB-VP

Xtriage's analysis on translational NCS is as follows: *The largest off-origin peak in the Patterson function is 6.78% of the height of the origin peak. No significant pseudotranslation is detected.*

¹Intensities estimated from amplitudes.

²Theoretical values of $\langle |L| \rangle$, $\langle L^2 \rangle$ for acentric reflections are 0.5, 0.333 respectively for untwinned datasets, and 0.375, 0.2 for perfectly twinned datasets.

5 Model quality [i](#)

5.1 Standard geometry [i](#)

Bond lengths and bond angles in the following residue types are not validated in this section: PEG, GOL, PGE, EM9, EDO

The Z score for a bond length (or angle) is the number of standard deviations the observed value is removed from the expected value. A bond length (or angle) with $|Z| > 5$ is considered an outlier worth inspection. RMSZ is the root-mean-square of all Z scores of the bond lengths (or angles).

Mol	Chain	Bond lengths		Bond angles	
		RMSZ	$\# Z > 5$	RMSZ	$\# Z > 5$
1	A	0.55	0/2180	0.77	2/2957 (0.1%)
1	B	0.54	0/2203	0.79	6/2988 (0.2%)
All	All	0.55	0/4383	0.78	8/5945 (0.1%)

There are no bond length outliers.

All (8) bond angle outliers are listed below:

Mol	Chain	Res	Type	Atoms	Z	Observed(°)	Ideal(°)
1	B	136[A]	ARG	NE-CZ-NH2	7.20	123.90	120.30
1	B	136[B]	ARG	NE-CZ-NH2	7.20	123.90	120.30
1	B	50	ARG	NE-CZ-NH1	6.29	123.44	120.30
1	B	244	LEU	CA-CB-CG	6.08	129.29	115.30
1	B	136[A]	ARG	NE-CZ-NH1	-5.38	117.61	120.30
1	B	136[B]	ARG	NE-CZ-NH1	-5.38	117.61	120.30
1	A	245	ARG	NE-CZ-NH1	5.08	122.84	120.30
1	A	244	LEU	CA-CB-CG	5.05	126.91	115.30

There are no chirality outliers.

There are no planarity outliers.

5.2 Too-close contacts [i](#)

In the following table, the Non-H and H(model) columns list the number of non-hydrogen atoms and hydrogen atoms in the chain respectively. The H(added) column lists the number of hydrogen atoms added and optimized by MolProbity. The Clashes column lists the number of clashes within the asymmetric unit, whereas Symm-Clashes lists symmetry related clashes.

Mol	Chain	Non-H	H(model)	H(added)	Clashes	Symm-Clashes
1	A	2137	0	2172	11	0

Continued on next page...

Continued from previous page...

Mol	Chain	Non-H	H(model)	H(added)	Clashes	Symm-Clashes
1	B	2151	0	2192	6	0
2	A	30	0	40	1	0
2	B	12	0	16	0	0
3	A	8	0	12	0	0
3	B	8	0	12	0	0
4	A	22	0	0	0	0
5	A	10	0	14	0	0
6	B	7	0	10	0	0
7	A	34	0	0	0	0
7	B	34	0	0	1	0
All	All	4453	0	4468	16	0

The all-atom clashscore is defined as the number of clashes found per 1000 atoms (including hydrogen atoms). The all-atom clashscore for this structure is 2.

All (16) close contacts within the same asymmetric unit are listed below, sorted by their clash magnitude.

Atom-1	Atom-2	Interatomic distance (Å)	Clash overlap (Å)
1:B:50:ARG:NH2	7:B:501:HOH:O	2.22	0.72
1:A:262:LEU:HD13	1:A:279:MET:HE1	1.77	0.67
1:A:267:LEU:HD22	1:B:267:LEU:HD22	1.91	0.51
1:A:232:ASN:HD22	1:A:232:ASN:C	2.13	0.51
1:A:232:ASN:HD21	1:A:235:GLU:HG3	1.76	0.50
1:A:11:SER:HB3	1:A:36:LEU:HD23	1.93	0.49
1:A:16:LEU:C	1:A:16:LEU:HD23	2.32	0.49
1:A:229:ALA:HB2	1:A:258:ARG:CD	2.44	0.48
1:B:95:LEU:HB2	1:B:110:VAL:HG21	1.99	0.45
1:A:128:ASP:HA	1:A:131:ARG:HG2	1.99	0.45
1:B:229:ALA:HB2	1:B:258:ARG:HD2	1.99	0.44
1:B:136[A]:ARG:NH1	1:B:249:PRO:HB2	2.34	0.43
1:A:229:ALA:CB	1:A:258:ARG:HD2	2.49	0.43
1:A:162:LEU:HD11	2:A:405:GOL:H31	2.01	0.42
1:A:95:LEU:HB2	1:A:110:VAL:HG21	2.02	0.42
1:B:136[A]:ARG:NH1	1:B:249:PRO:CB	2.82	0.41

There are no symmetry-related clashes.

5.3 Torsion angles

5.3.1 Protein backbone

In the following table, the Percentiles column shows the percent Ramachandran outliers of the chain as a percentile score with respect to all X-ray entries followed by that with respect to entries of similar resolution.

The Analysed column shows the number of residues for which the backbone conformation was analysed, and the total number of residues.

Mol	Chain	Analysed	Favoured	Allowed	Outliers	Percentiles	
1	A	276/328 (84%)	273 (99%)	3 (1%)	0	100	100
1	B	278/328 (85%)	275 (99%)	3 (1%)	0	100	100
All	All	554/656 (84%)	548 (99%)	6 (1%)	0	100	100

There are no Ramachandran outliers to report.

5.3.2 Protein sidechains

In the following table, the Percentiles column shows the percent sidechain outliers of the chain as a percentile score with respect to all X-ray entries followed by that with respect to entries of similar resolution.

The Analysed column shows the number of residues for which the sidechain conformation was analysed, and the total number of residues.

Mol	Chain	Analysed	Rotameric	Outliers	Percentiles	
1	A	230/257 (90%)	220 (96%)	10 (4%)	29	26
1	B	233/257 (91%)	226 (97%)	7 (3%)	41	41
All	All	463/514 (90%)	446 (96%)	17 (4%)	36	32

All (17) residues with a non-rotameric sidechain are listed below:

Mol	Chain	Res	Type
1	A	63	GLN
1	A	70	LYS
1	A	77	GLU
1	A	111	LEU
1	A	209	ILE
1	A	232	ASN
1	A	244	LEU
1	A	265	MET

Continued on next page...

Continued from previous page...

Mol	Chain	Res	Type
1	A	281	ARG
1	A	282	GLU
1	B	50	ARG
1	B	111	LEU
1	B	136[A]	ARG
1	B	136[B]	ARG
1	B	209	ILE
1	B	228	GLU
1	B	244	LEU

Some sidechains can be flipped to improve hydrogen bonding and reduce clashes. All (7) such sidechains are listed below:

Mol	Chain	Res	Type
1	A	17	HIS
1	A	42	GLN
1	A	63	GLN
1	A	232	ASN
1	B	17	HIS
1	B	42	GLN
1	B	152	ASN

5.3.3 RNA [i](#)

There are no RNA molecules in this entry.

5.4 Non-standard residues in protein, DNA, RNA chains [i](#)

There are no non-standard protein/DNA/RNA residues in this entry.

5.5 Carbohydrates [i](#)

There are no monosaccharides in this entry.

5.6 Ligand geometry [i](#)

14 ligands are modelled in this entry.

In the following table, the Counts columns list the number of bonds (or angles) for which Mogul statistics could be retrieved, the number of bonds (or angles) that are observed in the model and

the number of bonds (or angles) that are defined in the Chemical Component Dictionary. The Link column lists molecule types, if any, to which the group is linked. The Z score for a bond length (or angle) is the number of standard deviations the observed value is removed from the expected value. A bond length (or angle) with $|Z| > 2$ is considered an outlier worth inspection. RMSZ is the root-mean-square of all Z scores of the bond lengths (or angles).

Mol	Type	Chain	Res	Link	Bond lengths			Bond angles		
					Counts	RMSZ	$\# Z > 2$	Counts	RMSZ	$\# Z > 2$
2	GOL	A	402	-	5,5,5	0.25	0	5,5,5	0.48	0
3	EDO	B	403	-	3,3,3	0.36	0	2,2,2	0.47	0
3	EDO	A	407	-	3,3,3	0.47	0	2,2,2	0.28	0
3	EDO	A	406	-	3,3,3	0.51	0	2,2,2	0.47	0
4	EM9	A	408	-	23,25,42	0.67	0	33,40,59	1.03	2 (6%)
2	GOL	A	403	-	5,5,5	0.23	0	5,5,5	0.17	0
6	PEG	B	405	-	6,6,6	0.55	0	5,5,5	0.30	0
5	PGE	A	409	-	9,9,9	0.49	0	8,8,8	0.42	0
2	GOL	B	402	-	5,5,5	0.21	0	5,5,5	0.59	0
2	GOL	A	404	-	5,5,5	0.45	0	5,5,5	0.21	0
3	EDO	B	404	-	3,3,3	0.47	0	2,2,2	0.33	0
2	GOL	B	401	-	5,5,5	0.48	0	5,5,5	0.19	0
2	GOL	A	401	-	5,5,5	0.25	0	5,5,5	0.31	0
2	GOL	A	405	-	5,5,5	0.31	0	5,5,5	0.69	0

In the following table, the Chirals column lists the number of chiral outliers, the number of chiral centers analysed, the number of these observed in the model and the number defined in the Chemical Component Dictionary. Similar counts are reported in the Torsion and Rings columns. '-' means no outliers of that kind were identified.

Mol	Type	Chain	Res	Link	Chirals	Torsions	Rings
2	GOL	A	402	-	-	0/4/4/4	-
3	EDO	B	403	-	-	0/1/1/1	-
3	EDO	A	407	-	-	1/1/1/1	-
3	EDO	A	406	-	-	1/1/1/1	-
4	EM9	A	408	-	-	-	0/4/4/4
2	GOL	A	403	-	-	2/4/4/4	-
6	PEG	B	405	-	-	1/4/4/4	-
5	PGE	A	409	-	-	3/7/7/7	-
2	GOL	B	402	-	-	2/4/4/4	-
2	GOL	A	404	-	-	3/4/4/4	-
3	EDO	B	404	-	-	1/1/1/1	-
2	GOL	B	401	-	-	4/4/4/4	-
2	GOL	A	401	-	-	2/4/4/4	-
2	GOL	A	405	-	-	2/4/4/4	-

There are no bond length outliers.

All (2) bond angle outliers are listed below:

Mol	Chain	Res	Type	Atoms	Z	Observed($^{\circ}$)	Ideal($^{\circ}$)
4	A	408	EM9	CBL-CAJ-CAD	2.13	113.78	109.03
4	A	408	EM9	C9-CAC-CAD	2.09	115.61	111.71

There are no chirality outliers.

All (22) torsion outliers are listed below:

Mol	Chain	Res	Type	Atoms
2	A	403	GOL	O1-C1-C2-O2
2	A	403	GOL	O1-C1-C2-C3
2	A	404	GOL	C1-C2-C3-O3
2	B	401	GOL	O1-C1-C2-C3
2	B	401	GOL	C1-C2-C3-O3
2	A	404	GOL	O2-C2-C3-O3
5	A	409	PGE	O3-C5-C6-O4
2	B	401	GOL	O1-C1-C2-O2
3	B	404	EDO	O1-C1-C2-O2
6	B	405	PEG	O2-C3-C4-O4
2	B	401	GOL	O2-C2-C3-O3
2	B	402	GOL	O1-C1-C2-C3
3	A	406	EDO	O1-C1-C2-O2
2	A	401	GOL	O2-C2-C3-O3
2	A	405	GOL	O2-C2-C3-O3
5	A	409	PGE	O2-C3-C4-O3
2	A	401	GOL	O1-C1-C2-C3
2	B	402	GOL	O1-C1-C2-O2
3	A	407	EDO	O1-C1-C2-O2
2	A	404	GOL	O1-C1-C2-C3
2	A	405	GOL	C1-C2-C3-O3
5	A	409	PGE	C4-C3-O2-C2

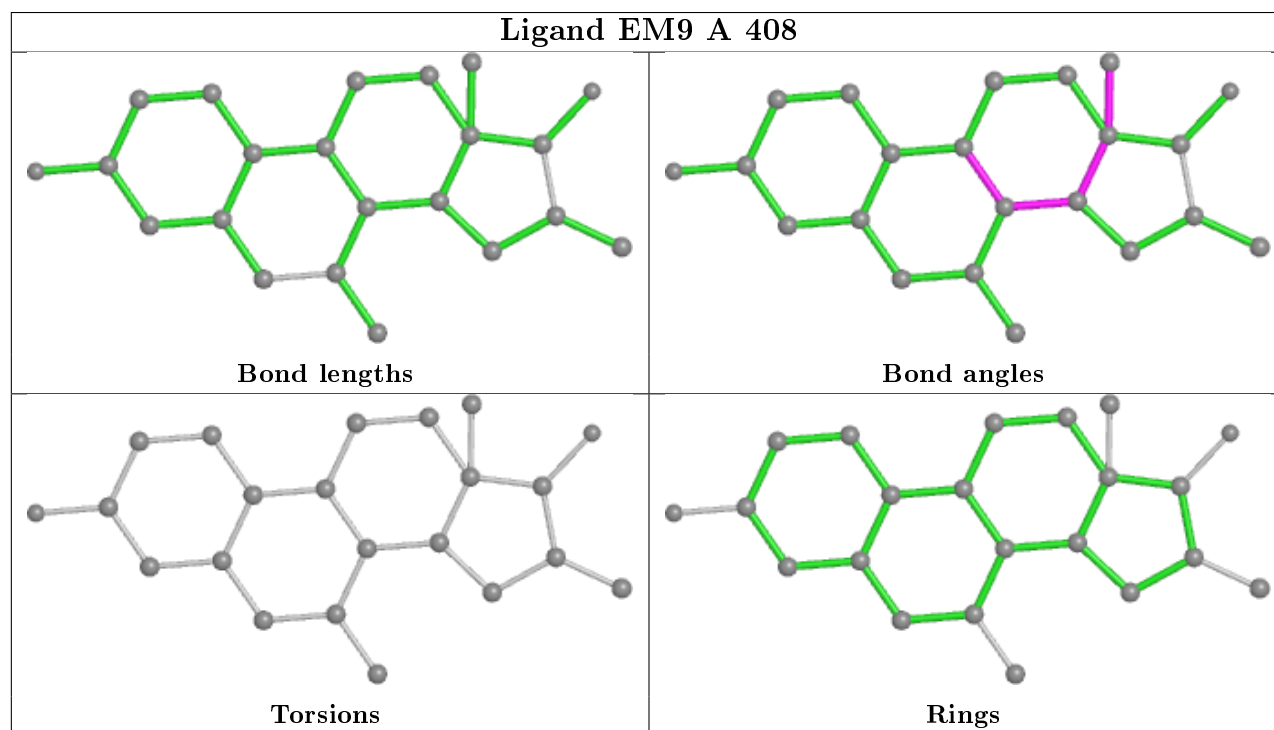
There are no ring outliers.

1 monomer is involved in 1 short contact:

Mol	Chain	Res	Type	Clashes	Symm-Clashes
2	A	405	GOL	1	0

The following is a two-dimensional graphical depiction of Mogul quality analysis of bond lengths, bond angles, torsion angles, and ring geometry for all instances of the Ligand of Interest. In addition, ligands with molecular weight > 250 and outliers as shown on the validation Tables will

also be included. For torsion angles, if less than 5% of the Mogul distribution of torsion angles is within 10 degrees of the torsion angle in question, then that torsion angle is considered an outlier. Any bond that is central to one or more torsion angles identified as an outlier by Mogul will be highlighted in the graph. For rings, the root-mean-square deviation (RMSD) between the ring in question and similar rings identified by Mogul is calculated over all ring torsion angles. If the average RMSD is greater than 60 degrees and the minimal RMSD between the ring in question and any Mogul-identified rings is also greater than 60 degrees, then that ring is considered an outlier. The outliers are highlighted in purple. The color gray indicates Mogul did not find sufficient equivalents in the CSD to analyse the geometry.



5.7 Other polymers [i](#)

There are no such residues in this entry.

5.8 Polymer linkage issues [i](#)

There are no chain breaks in this entry.

6 Fit of model and data ⓘ

6.1 Protein, DNA and RNA chains ⓘ

In the following table, the column labelled ‘#RSRZ> 2’ contains the number (and percentage) of RSRZ outliers, followed by percent RSRZ outliers for the chain as percentile scores relative to all X-ray entries and entries of similar resolution. The OWAB column contains the minimum, median, 95th percentile and maximum values of the occupancy-weighted average B-factor per residue. The column labelled ‘Q< 0.9’ lists the number of (and percentage) of residues with an average occupancy less than 0.9.

Mol	Chain	Analysed	<RSRZ>	#RSRZ>2	OWAB(Å ²)	Q<0.9
1	A	279/328 (85%)	0.31	17 (6%) 21 20	28, 38, 61, 109	0
1	B	278/328 (84%)	0.29	25 (8%) 9 8	28, 39, 62, 75	0
All	All	557/656 (84%)	0.30	42 (7%) 14 13	28, 38, 62, 109	0

All (42) RSRZ outliers are listed below:

Mol	Chain	Res	Type	RSRZ
1	A	285	GLY	7.1
1	A	1	ALA	6.8
1	A	199	SER	6.4
1	A	201	GLU	5.8
1	B	1	ALA	5.4
1	A	198	GLY	4.2
1	B	227	ARG	3.8
1	A	202	GLU	3.8
1	A	205	ASP	3.7
1	A	206	ARG	3.6
1	B	201	GLU	3.6
1	B	199	SER	3.4
1	B	28	GLN	3.3
1	A	139	VAL	3.2
1	B	198	GLY	3.1
1	B	165	LEU	3.1
1	B	189	HIS	2.9
1	A	200	PRO	2.9
1	B	56	PRO	2.8
1	B	205	ASP	2.8
1	B	2	ARG	2.8
1	B	77	GLU	2.8
1	B	224	GLN	2.7
1	B	228	GLU	2.6

Continued on next page...

Continued from previous page...

Mol	Chain	Res	Type	RSRZ
1	B	202	GLU	2.6
1	A	137	VAL	2.5
1	A	27	SER	2.5
1	B	82	GLY	2.5
1	B	122	LEU	2.5
1	B	131	ARG	2.4
1	A	180	LEU	2.4
1	B	139	VAL	2.4
1	A	227	ARG	2.4
1	B	180	LEU	2.4
1	B	137	VAL	2.3
1	A	28	GLN	2.3
1	A	138	LEU	2.3
1	B	169	LEU	2.2
1	B	57	GLY	2.1
1	B	225	VAL	2.1
1	B	138	LEU	2.1
1	A	132	ARG	2.0

6.2 Non-standard residues in protein, DNA, RNA chains [i](#)

There are no non-standard protein/DNA/RNA residues in this entry.

6.3 Carbohydrates [i](#)

There are no monosaccharides in this entry.

6.4 Ligands [i](#)

In the following table, the Atoms column lists the number of modelled atoms in the group and the number defined in the chemical component dictionary. The B-factors column lists the minimum, median, 95th percentile and maximum values of B factors of atoms in the group. The column labelled 'Q< 0.9' lists the number of atoms with occupancy less than 0.9.

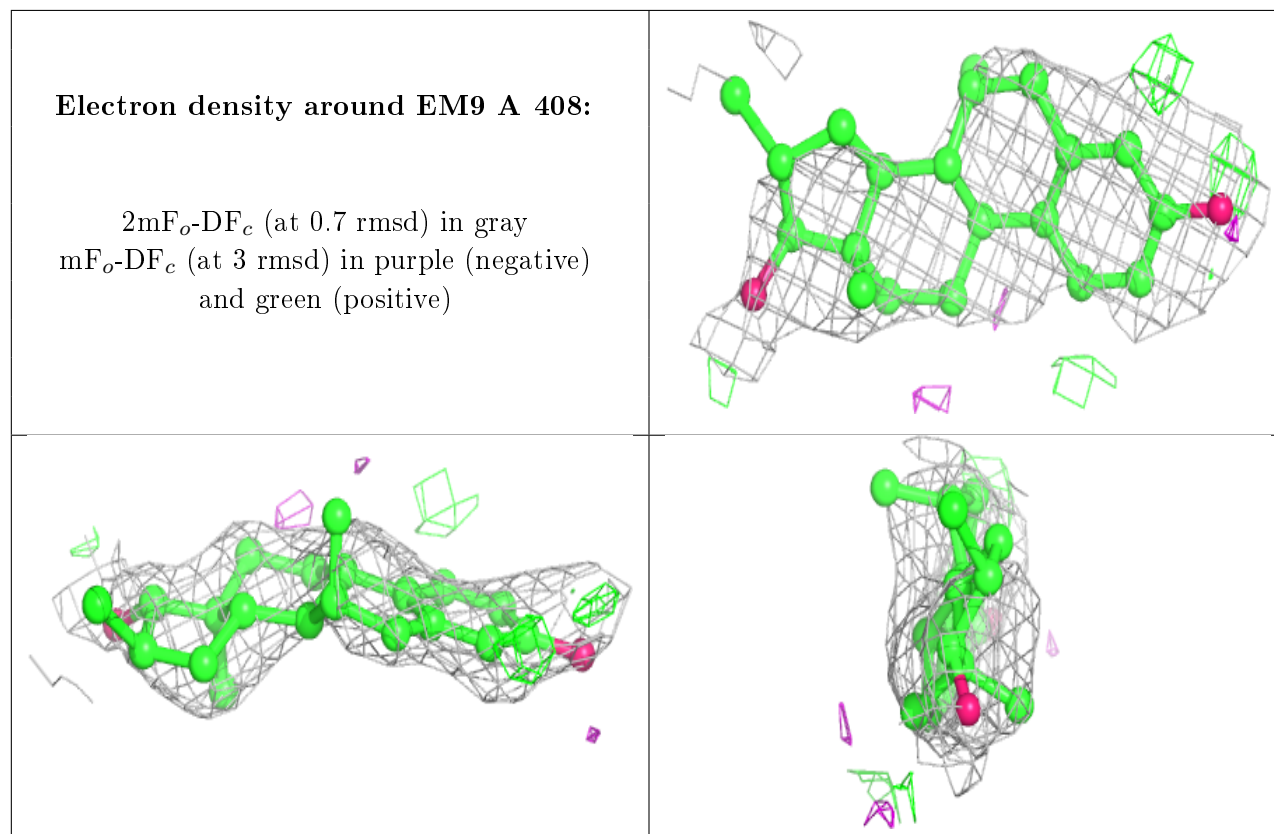
Mol	Type	Chain	Res	Atoms	RSCC	RSR	B-factors(Å ²)	Q<0.9
3	EDO	A	407	4/4	0.66	0.26	58,61,63,65	0
4	EM9	A	408	22/39	0.67	0.27	90,96,105,116	0
2	GOL	B	401	6/6	0.69	0.20	57,67,68,70	0
5	PGE	A	409	10/10	0.73	0.21	68,77,81,81	0
2	GOL	B	402	6/6	0.80	0.27	44,59,62,69	0

Continued on next page...

Continued from previous page...

Mol	Type	Chain	Res	Atoms	RSCC	RSR	B-factors(\AA^2)	Q<0.9
3	EDO	B	404	4/4	0.81	0.15	63,66,67,69	0
6	PEG	B	405	7/7	0.86	0.11	58,60,62,62	0
2	GOL	A	404	6/6	0.87	0.19	52,60,62,72	0
2	GOL	A	403	6/6	0.88	0.19	65,68,70,71	0
2	GOL	A	405	6/6	0.88	0.23	53,63,64,72	0
2	GOL	A	401	6/6	0.89	0.17	41,48,51,53	0
3	EDO	A	406	4/4	0.92	0.21	51,52,53,55	0
2	GOL	A	402	6/6	0.95	0.15	44,46,48,48	0
3	EDO	B	403	4/4	0.96	0.09	51,51,52,52	0

The following is a graphical depiction of the model fit to experimental electron density of all instances of the Ligand of Interest. In addition, ligands with molecular weight > 250 and outliers as shown on the geometry validation Tables will also be included. Each fit is shown from different orientation to approximate a three-dimensional view.



6.5 Other polymers ⓘ

There are no such residues in this entry.