



# wwPDB X-ray Structure Validation Summary Report ⓘ

May 13, 2020 – 01:32 am BST

PDB ID : 2DU4  
Title : Crystal structure of Archaeoglobus fulgidus O-phosphoseryl-tRNA synthetase complexed with tRNACys  
Authors : Fukunaga, R.  
Deposited on : 2006-07-20  
Resolution : 2.80 Å(reported)

This is a wwPDB X-ray Structure Validation Summary Report for a publicly released PDB entry.

We welcome your comments at [validation@mail.wwpdb.org](mailto:validation@mail.wwpdb.org)

A user guide is available at

<https://www.wwpdb.org/validation/2017/XrayValidationReportHelp>

with specific help available everywhere you see the ⓘ symbol.

---

The following versions of software and data (see [references ⓘ](#)) were used in the production of this report:

MolProbity	:	4.02b-467
Xtriage (Phenix)	:	1.13
EDS	:	2.11
Percentile statistics	:	20191225.v01 (using entries in the PDB archive December 25th 2019)
Refmac	:	5.8.0158
CCP4	:	7.0.044 (Gargrove)
Ideal geometry (proteins)	:	Engh & Huber (2001)
Ideal geometry (DNA, RNA)	:	Parkinson et al. (1996)
Validation Pipeline (wwPDB-VP)	:	2.11

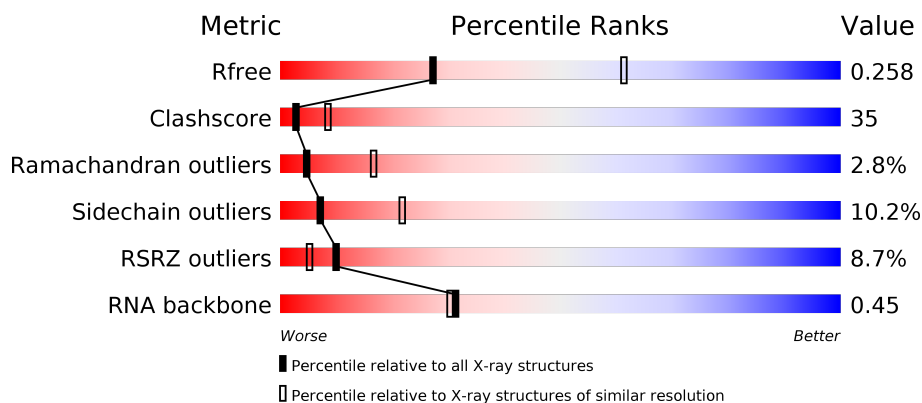
# 1 Overall quality at a glance

The following experimental techniques were used to determine the structure:

*X-RAY DIFFRACTION*

The reported resolution of this entry is 2.80 Å.

Percentile scores (ranging between 0-100) for global validation metrics of the entry are shown in the following graphic. The table shows the number of entries on which the scores are based.



Metric	Whole archive (#Entries)	Similar resolution (#Entries, resolution range(Å))
$R_{free}$	130704	3140 (2.80-2.80)
Clashscore	141614	3569 (2.80-2.80)
Ramachandran outliers	138981	3498 (2.80-2.80)
Sidechain outliers	138945	3500 (2.80-2.80)
RSRZ outliers	127900	3078 (2.80-2.80)
RNA backbone	3102	1227 (3.10-2.50)

The table below summarises the geometric issues observed across the polymeric chains and their fit to the electron density. The red, orange, yellow and green segments on the lower bar indicate the fraction of residues that contain outliers for  $\geq 3$ , 2, 1 and 0 types of geometric quality criteria respectively. A grey segment represents the fraction of residues that are not modelled. The numeric value for each fraction is indicated below the corresponding segment, with a dot representing fractions  $\leq 5\%$ . The upper red bar (where present) indicates the fraction of residues that have poor fit to the electron density. The numeric value is given above the bar.

Mol	Chain	Length	Quality of chain
1	C	71	<div> <div>38%</div> <div>28% 34% 38%</div> </div>
2	A	534	<div> <div>4%</div> <div>42% 40% 5% 13%</div> </div>
2	B	534	<div> <div>7%</div> <div>40% 40% 6% 13%</div> </div>

## 2 Entry composition

There are 3 unique types of molecules in this entry. The entry contains 9117 atoms, of which 0 are hydrogens and 0 are deuteriums.

In the tables below, the ZeroOcc column contains the number of atoms modelled with zero occupancy, the AltConf column contains the number of residues with at least one atom in alternate conformation and the Trace column contains the number of residues modelled with at most 2 atoms.

- Molecule 1 is a RNA chain called tRNA.

Mol	Chain	Residues	Atoms					ZeroOcc	AltConf	Trace
1	C	71	Total	C	N	O	P	0	0	0
			1520	675	272	502	71			

- Molecule 2 is a protein called O-phosphoseryl-tRNA synthetase.

Mol	Chain	Residues	Atoms					ZeroOcc	AltConf	Trace
2	A	466	Total	C	N	O	S	0	0	0
			3777	2440	631	693	13			
2	B	465	Total	C	N	O	S	0	0	0
			3763	2429	630	691	13			

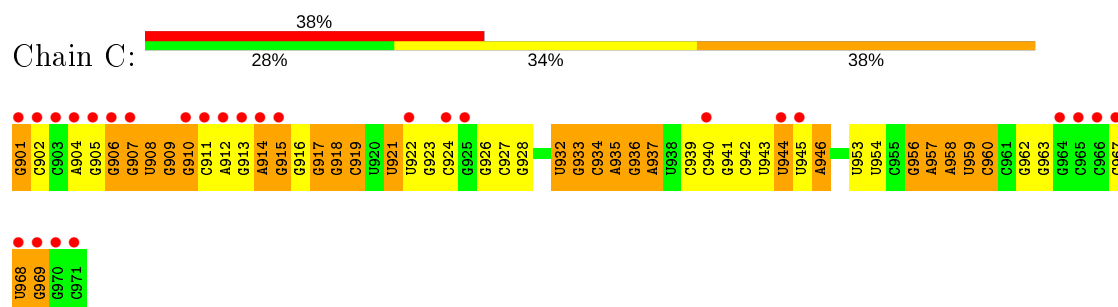
- Molecule 3 is water.

Mol	Chain	Residues	Atoms		ZeroOcc	AltConf
3	A	26	Total	O	0	0
			26	26		
3	B	31	Total	O	0	0
			31	31		

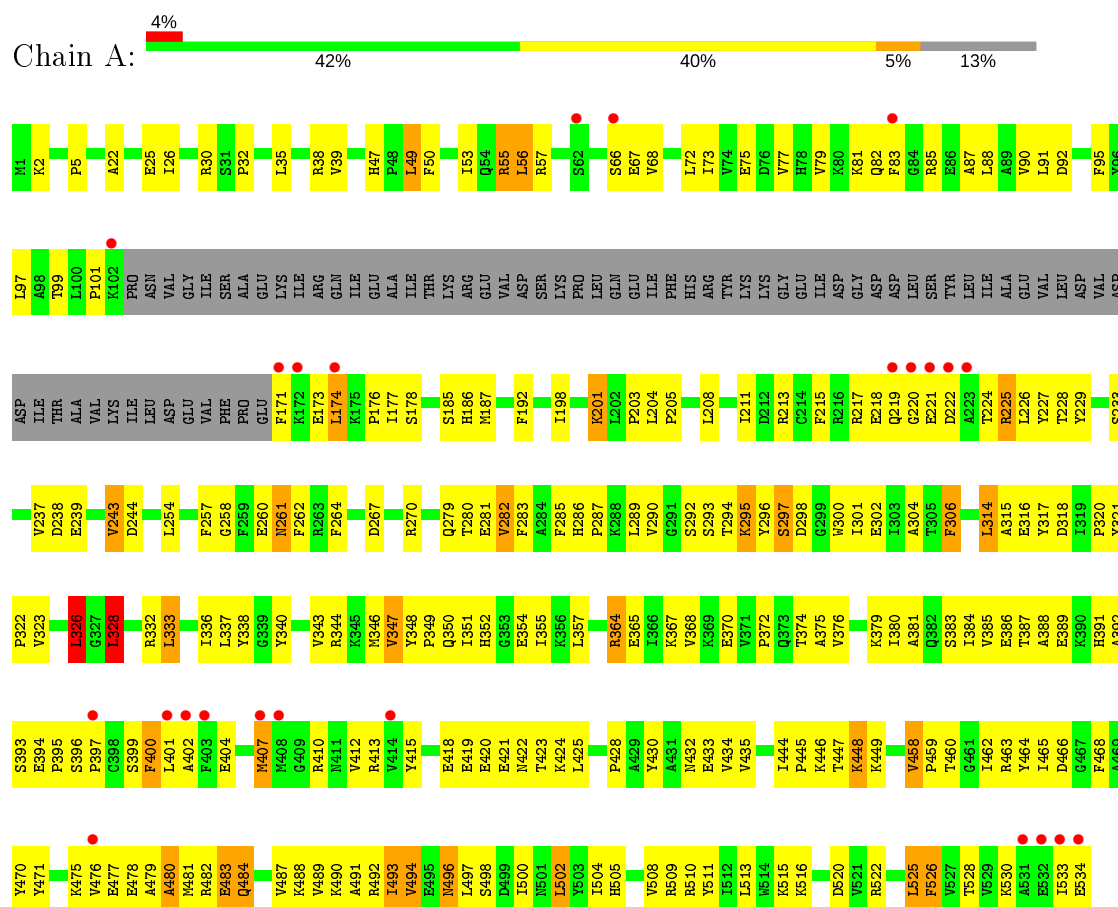
### 3 Residue-property plots [i](#)

These plots are drawn for all protein, RNA and DNA chains in the entry. The first graphic for a chain summarises the proportions of the various outlier classes displayed in the second graphic. The second graphic shows the sequence view annotated by issues in geometry and electron density. Residues are color-coded according to the number of geometric quality criteria for which they contain at least one outlier: green = 0, yellow = 1, orange = 2 and red = 3 or more. A red dot above a residue indicates a poor fit to the electron density ( $RSRZ > 2$ ). Stretches of 2 or more consecutive residues without any outlier are shown as a green connector. Residues present in the sample, but not in the model, are shown in grey.

#### • Molecule 1: tRNA

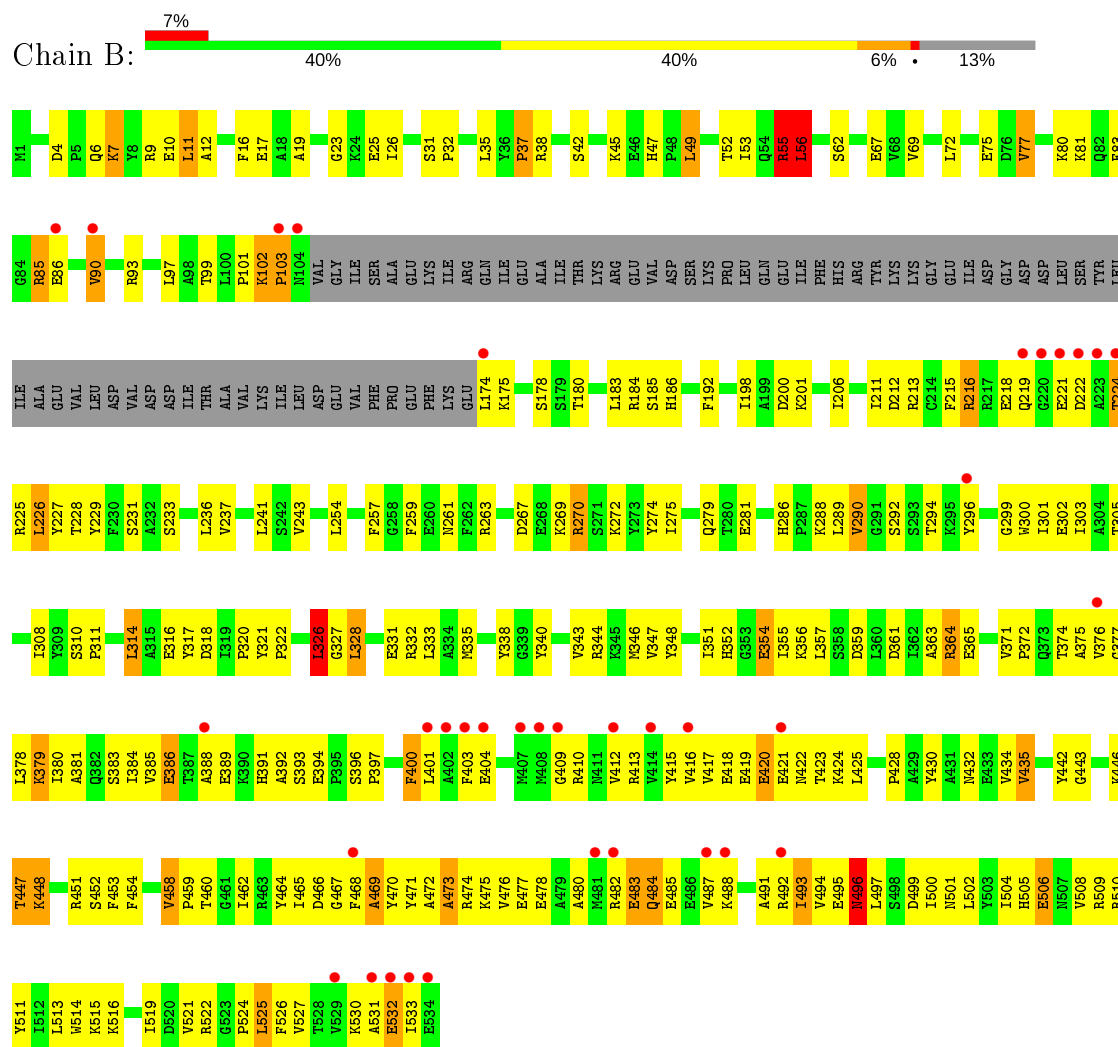


#### • Molecule 2: O-phosphoseryl-tRNA synthetase



• Molecule 2: O-phosphoseryl-tRNA synthetase

Chain B:



## 4 Data and refinement statistics

Property	Value	Source
Space group	P 31 2 1	Depositor
Cell constants a, b, c, $\alpha$ , $\beta$ , $\gamma$	148.43Å 148.43Å 151.53Å 90.00° 90.00° 120.00°	Depositor
Resolution (Å)	49.01 – 2.80 49.01 – 2.80	Depositor EDS
% Data completeness (in resolution range)	98.4 (49.01-2.80) 98.6 (49.01-2.80)	Depositor EDS
$R_{merge}$	(Not available)	Depositor
$R_{sym}$	(Not available)	Depositor
$\langle I/\sigma(I) \rangle$ <sup>1</sup>	2.39 (at 2.81Å)	Xtriage
Refinement program	CNS 1.1	Depositor
R, $R_{free}$	0.207 , 0.269 0.205 , 0.258	Depositor DCC
$R_{free}$ test set	2362 reflections (5.00%)	wwPDB-VP
Wilson B-factor (Å <sup>2</sup> )	81.2	Xtriage
Anisotropy	0.149	Xtriage
Bulk solvent $k_{sol}$ (e/Å <sup>3</sup> ), $B_{sol}$ (Å <sup>2</sup> )	0.33 , 72.6	EDS
L-test for twinning <sup>2</sup>	$\langle  L  \rangle = 0.49$ , $\langle L^2 \rangle = 0.32$	Xtriage
Estimated twinning fraction	0.020 for -h,-k,l	Xtriage
$F_o, F_c$ correlation	0.95	EDS
Total number of atoms	9117	wwPDB-VP
Average B, all atoms (Å <sup>2</sup> )	98.0	wwPDB-VP

Xtriage's analysis on translational NCS is as follows: *The largest off-origin peak in the Patterson function is 2.52% of the height of the origin peak. No significant pseudotranslation is detected.*

<sup>1</sup>Intensities estimated from amplitudes.

<sup>2</sup>Theoretical values of  $\langle |L| \rangle$ ,  $\langle L^2 \rangle$  for acentric reflections are 0.5, 0.333 respectively for untwinned datasets, and 0.375, 0.2 for perfectly twinned datasets.

## 5 Model quality

### 5.1 Standard geometry

The Z score for a bond length (or angle) is the number of standard deviations the observed value is removed from the expected value. A bond length (or angle) with  $|Z| > 5$  is considered an outlier worth inspection. RMSZ is the root-mean-square of all Z scores of the bond lengths (or angles).

Mol	Chain	Bond lengths		Bond angles	
		RMSZ	$\# Z  > 5$	RMSZ	$\# Z  > 5$
1	C	0.59	1/1697 (0.1%)	0.81	0/2644
2	A	0.63	0/3865	0.83	2/5218 (0.0%)
2	B	0.64	0/3851	0.85	5/5202 (0.1%)
All	All	0.63	1/9413 (0.0%)	0.84	7/13064 (0.1%)

Chiral center outliers are detected by calculating the chiral volume of a chiral center and verifying if the center is modelled as a planar moiety or with the opposite hand. A planarity outlier is detected by checking planarity of atoms in a peptide group, atoms in a mainchain group or atoms of a sidechain that are expected to be planar.

Mol	Chain	#Chirality outliers	#Planarity outliers
1	C	0	1
2	A	0	1
2	B	0	2
All	All	0	4

All (1) bond length outliers are listed below:

Mol	Chain	Res	Type	Atoms	Z	Observed(Å)	Ideal(Å)
1	C	901	G	OP3-P	-6.95	1.52	1.61

The worst 5 of 7 bond angle outliers are listed below:

Mol	Chain	Res	Type	Atoms	Z	Observed(°)	Ideal(°)
2	B	326	LEU	CA-CB-CG	6.70	130.71	115.30
2	B	56	LEU	CA-CB-CG	6.18	129.51	115.30
2	A	326	LEU	CA-CB-CG	5.69	128.38	115.30
2	A	328	LEU	CA-CB-CG	5.65	128.31	115.30
2	B	443	GLY	N-CA-C	-5.48	99.39	113.10

There are no chirality outliers.

All (4) planarity outliers are listed below:

Mol	Chain	Res	Type	Group
2	A	338	TYR	Sidechain
2	B	274	TYR	Sidechain
2	B	338	TYR	Sidechain
1	C	956	G	Sidechain

## 5.2 Too-close contacts

In the following table, the Non-H and H(model) columns list the number of non-hydrogen atoms and hydrogen atoms in the chain respectively. The H(added) column lists the number of hydrogen atoms added and optimized by MolProbity. The Clashes column lists the number of clashes within the asymmetric unit, whereas Symm-Clashes lists symmetry related clashes.

Mol	Chain	Non-H	H(model)	H(added)	Clashes	Symm-Clashes
1	C	1520	0	769	65	0
2	A	3777	0	3789	278	0
2	B	3763	0	3774	295	0
3	A	26	0	0	4	0
3	B	31	0	0	1	0
All	All	9117	0	8332	613	0

The all-atom clashscore is defined as the number of clashes found per 1000 atoms (including hydrogen atoms). The all-atom clashscore for this structure is 35.

The worst 5 of 613 close contacts within the same asymmetric unit are listed below, sorted by their clash magnitude.

Atom-1	Atom-2	Interatomic distance (Å)	Clash overlap (Å)
2:A:55:ARG:HG2	2:A:55:ARG:HH21	1.10	1.07
2:B:55:ARG:HH21	2:B:55:ARG:HG2	1.18	1.01
2:B:47:HIS:HD2	2:B:49:LEU:H	1.12	0.97
2:B:85:ARG:H	2:B:85:ARG:HD2	1.33	0.94
1:C:942:C:H2'	1:C:943:U:H5'	1.48	0.93

There are no symmetry-related clashes.

## 5.3 Torsion angles

### 5.3.1 Protein backbone

In the following table, the Percentiles column shows the percent Ramachandran outliers of the chain as a percentile score with respect to all X-ray entries followed by that with respect to entries of similar resolution.



The Analysed column shows the number of residues for which the backbone conformation was analysed, and the total number of residues.

Mol	Chain	Analysed	Favoured	Allowed	Outliers	Percentiles	
2	A	462/534 (86%)	403 (87%)	48 (10%)	11 (2%)	6	20
2	B	461/534 (86%)	399 (87%)	47 (10%)	15 (3%)	4	13
All	All	923/1068 (86%)	802 (87%)	95 (10%)	26 (3%)	5	17

5 of 26 Ramachandran outliers are listed below:

Mol	Chain	Res	Type
2	A	174	LEU
2	A	484	GLN
2	B	102	LYS
2	B	420	GLU
2	B	484	GLN

### 5.3.2 Protein sidechains [i](#)

In the following table, the Percentiles column shows the percent sidechain outliers of the chain as a percentile score with respect to all X-ray entries followed by that with respect to entries of similar resolution.

The Analysed column shows the number of residues for which the sidechain conformation was analysed, and the total number of residues.

Mol	Chain	Analysed	Rotameric	Outliers	Percentiles	
2	A	403/464 (87%)	363 (90%)	40 (10%)	8	23
2	B	402/464 (87%)	360 (90%)	42 (10%)	7	21
All	All	805/928 (87%)	723 (90%)	82 (10%)	7	22

5 of 82 residues with a non-rotameric sidechain are listed below:

Mol	Chain	Res	Type
2	A	496	ASN
2	B	55	ARG
2	B	476	VAL
2	A	502	LEU
2	B	25	GLU

Some sidechains can be flipped to improve hydrogen bonding and reduce clashes. 5 of 17 such sidechains are listed below:

Mol	Chain	Res	Type
2	A	484	GLN
2	A	496	ASN
2	B	382	GLN
2	A	422	ASN
2	B	391	HIS

### 5.3.3 RNA ⓘ

Mol	Chain	Analysed	Backbone Outliers	Pucker Outliers
1	C	70/71 (98%)	22 (31%)	8 (11%)

5 of 22 RNA backbone outliers are listed below:

Mol	Chain	Res	Type
1	C	906	G
1	C	907	G
1	C	908	U
1	C	909	G
1	C	910	G

5 of 8 RNA pucker outliers are listed below:

Mol	Chain	Res	Type
1	C	918	G
1	C	959	U
1	C	936	G
1	C	917	G
1	C	934	C

## 5.4 Non-standard residues in protein, DNA, RNA chains ⓘ

There are no non-standard protein/DNA/RNA residues in this entry.

## 5.5 Carbohydrates ⓘ

There are no carbohydrates in this entry.

## 5.6 Ligand geometry ⓘ

There are no ligands in this entry.

## 5.7 Other polymers [i](#)

There are no such residues in this entry.

## 5.8 Polymer linkage issues [i](#)

There are no chain breaks in this entry.

## 6 Fit of model and data [i](#)

### 6.1 Protein, DNA and RNA chains [i](#)

In the following table, the column labelled ‘#RSRZ> 2’ contains the number (and percentage) of RSRZ outliers, followed by percent RSRZ outliers for the chain as percentile scores relative to all X-ray entries and entries of similar resolution. The OWAB column contains the minimum, median, 95<sup>th</sup> percentile and maximum values of the occupancy-weighted average B-factor per residue. The column labelled ‘Q< 0.9’ lists the number of (and percentage) of residues with an average occupancy less than 0.9.

Mol	Chain	Analysed	<RSRZ>	#RSRZ>2	OWAB(Å <sup>2</sup> )	Q<0.9
1	C	71/71 (100%)	2.04	27 (38%) 0 0	107, 182, 200, 200	0
2	A	466/534 (87%)	0.46	24 (5%) 27 18	40, 76, 137, 201	0
2	B	465/534 (87%)	0.50	36 (7%) 13 7	39, 74, 157, 199	0
All	All	1002/1139 (87%)	0.59	87 (8%) 10 5	39, 78, 178, 201	0

The worst 5 of 87 RSRZ outliers are listed below:

Mol	Chain	Res	Type	RSRZ
2	B	222	ASP	10.4
2	B	223	ALA	10.2
2	A	220	GLY	8.5
2	A	223	ALA	8.0
1	C	971	C	6.6

### 6.2 Non-standard residues in protein, DNA, RNA chains [i](#)

There are no non-standard protein/DNA/RNA residues in this entry.

### 6.3 Carbohydrates [i](#)

There are no carbohydrates in this entry.

### 6.4 Ligands [i](#)

There are no ligands in this entry.

## 6.5 Other polymers [i](#)

There are no such residues in this entry.