



# Full wwPDB X-ray Structure Validation Report ⓘ

Aug 6, 2020 – 10:23 AM BST

PDB ID : 4DVS  
Title : Crystal structure of clade A/E 93TH057 HIV-1 gp120 core in complex with NBD-557  
Authors : Kwon, Y.D.; Kwong, P.D.  
Deposited on : 2012-02-23  
Resolution : 2.10 Å(reported)

This is a Full wwPDB X-ray Structure Validation Report for a publicly released PDB entry.

We welcome your comments at [validation@mail.wwpdb.org](mailto:validation@mail.wwpdb.org)

A user guide is available at

<https://www.wwpdb.org/validation/2017/XrayValidationReportHelp>

with specific help available everywhere you see the ⓘ symbol.

---

The following versions of software and data (see [references ⓘ](#)) were used in the production of this report:

MolProbity : 4.02b-467  
Mogul : 1.8.5 (274361), CSD as541be (2020)  
Xtriage (Phenix) : 1.13  
EDS : 2.13.1  
buster-report : 1.1.7 (2018)  
Percentile statistics : 20191225.v01 (using entries in the PDB archive December 25th 2019)  
Refmac : 5.8.0158  
CCP4 : 7.0.044 (Gargrove)  
Ideal geometry (proteins) : Engh & Huber (2001)  
Ideal geometry (DNA, RNA) : Parkinson et al. (1996)  
Validation Pipeline (wwPDB-VP) : 2.13.1

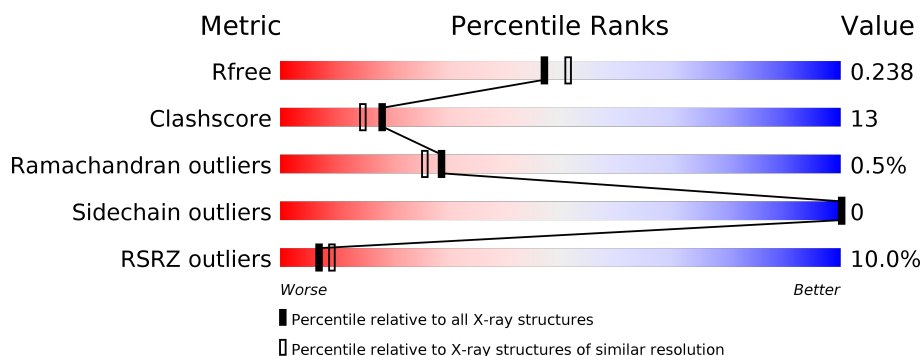
# 1 Overall quality at a glance

The following experimental techniques were used to determine the structure:

## *X-RAY DIFFRACTION*

The reported resolution of this entry is 2.10 Å.

Percentile scores (ranging between 0-100) for global validation metrics of the entry are shown in the following graphic. The table shows the number of entries on which the scores are based.



Metric	Whole archive (#Entries)	Similar resolution (#Entries, resolution range(Å))
$R_{free}$	130704	5197 (2.10-2.10)
Clashscore	141614	5710 (2.10-2.10)
Ramachandran outliers	138981	5647 (2.10-2.10)
Sidechain outliers	138945	5648 (2.10-2.10)
RSRZ outliers	127900	5083 (2.10-2.10)

The table below summarises the geometric issues observed across the polymeric chains and their fit to the electron density. The red, orange, yellow and green segments on the lower bar indicate the fraction of residues that contain outliers for  $\geq 3$ , 2, 1 and 0 types of geometric quality criteria respectively. A grey segment represents the fraction of residues that are not modelled. The numeric value for each fraction is indicated below the corresponding segment, with a dot representing fractions  $\leq 5\%$ . The upper red bar (where present) indicates the fraction of residues that have poor fit to the electron density. The numeric value is given above the bar.

Mol	Chain	Length	Quality of chain
1	A	353	<div> <div>8%</div> <div> <div></div> <div>75%</div> <div>20%</div> <div>• •</div> </div> </div>
1	B	353	<div> <div>11%</div> <div> <div></div> <div>71%</div> <div>25%</div> <div>•</div> </div> </div>

The following table lists non-polymeric compounds, carbohydrate monomers and non-standard residues in protein, DNA, RNA chains that are outliers for geometric or electron-density-fit criteria:

Mol	Type	Chain	Res	Chirality	Geometry	Clashes	Electron density
2	NAG	A	502	-	-	-	X
2	NAG	A	507	-	-	-	X
2	NAG	A	510	-	-	-	X
2	NAG	B	502	-	-	-	X
2	NAG	B	504	-	-	-	X
2	NAG	B	507	-	-	-	X
2	NAG	B	508	-	-	-	X
2	NAG	B	510	-	-	-	X
2	NAG	B	511	-	-	-	X

## 2 Entry composition [i](#)

There are 5 unique types of molecules in this entry. The entry contains 5981 atoms, of which 48 are hydrogens and 0 are deuteriums.

In the tables below, the ZeroOcc column contains the number of atoms modelled with zero occupancy, the AltConf column contains the number of residues with at least one atom in alternate conformation and the Trace column contains the number of residues modelled with at most 2 atoms.

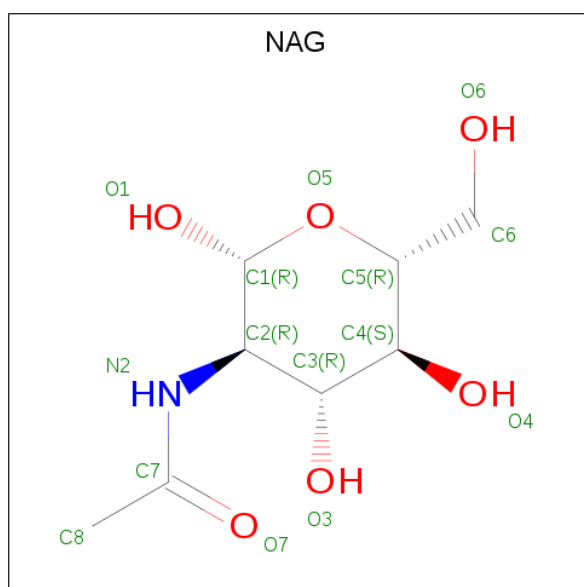
- Molecule 1 is a protein called clade A/E 93TH057 HIV-1 gp120 core.

Mol	Chain	Residues	Atoms					ZeroOcc	AltConf	Trace
1	A	339	Total	C	N	O	S	0	0	0
			2654	1666	460	507	21			
1	B	339	Total	C	N	O	S	0	0	0
			2654	1666	460	507	21			

There are 2 discrepancies between the modelled and reference sequences:

Chain	Residue	Modelled	Actual	Comment	Reference
A	375	SER	HIS	engineered mutation	UNP A0A0M3KKW9
B	375	SER	HIS	engineered mutation	UNP A0A0M3KKW9

- Molecule 2 is 2-acetamido-2-deoxy-beta-D-glucopyranose (three-letter code: NAG) (formula:  $C_8H_{15}NO_6$ ).



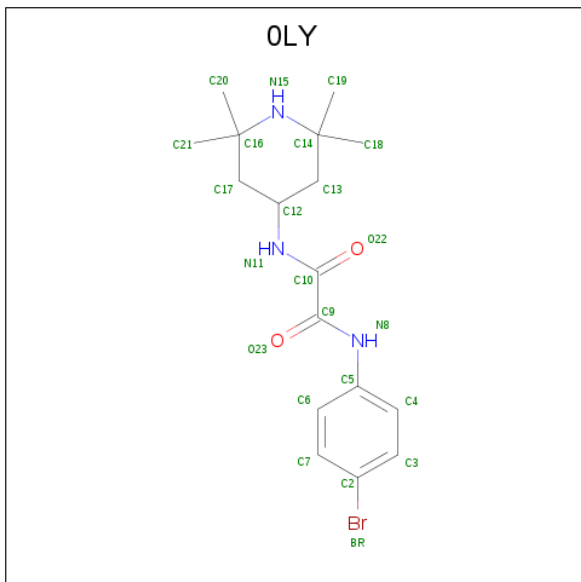
Mol	Chain	Residues	Atoms				ZeroOcc	AltConf
2	A	1	Total	C	N	O	0	0
			14	8	1	5		

*Continued on next page...*

*Continued from previous page...*

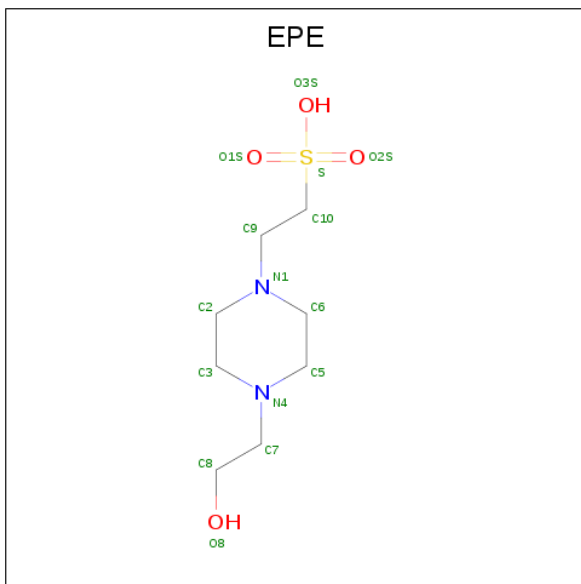
Mol	Chain	Residues	Atoms				ZeroOcc	AltConf
2	A	1	Total	C	N	O	0	0
			14	8	1	5		
2	A	1	Total	C	N	O	0	0
			14	8	1	5		
2	A	1	Total	C	N	O	0	0
			14	8	1	5		
2	A	1	Total	C	N	O	0	0
			14	8	1	5		
2	A	1	Total	C	N	O	0	0
			14	8	1	5		
2	A	1	Total	C	N	O	0	0
			14	8	1	5		
2	A	1	Total	C	N	O	0	0
			14	8	1	5		
2	A	1	Total	C	N	O	0	0
			14	8	1	5		
2	B	1	Total	C	N	O	0	0
			14	8	1	5		
2	B	1	Total	C	N	O	0	0
			14	8	1	5		
2	B	1	Total	C	N	O	0	0
			14	8	1	5		
2	B	1	Total	C	N	O	0	0
			14	8	1	5		
2	B	1	Total	C	N	O	0	0
			14	8	1	5		
2	B	1	Total	C	N	O	0	0
			14	8	1	5		
2	B	1	Total	C	N	O	0	0
			14	8	1	5		
2	B	1	Total	C	N	O	0	0
			14	8	1	5		
2	B	1	Total	C	N	O	0	0
			14	8	1	5		

- Molecule 3 is N-(4-bromophenyl)-N'-(2,2,6,6-tetramethylpiperidin-4-yl)ethanediamide (three-letter code: OLY) (formula:  $C_{17}H_{24}BrN_3O_2$ ).



Mol	Chain	Residues	Atoms						ZeroOcc	AltConf
3	A	1	Total	Br	C	H	N	O	0	0
			47	1	17	24	3	2		
3	B	1	Total	Br	C	H	N	O	0	0
			47	1	17	24	3	2		

- Molecule 4 is 4-(2-HYDROXYETHYL)-1-PIPERAZINE ETHANESULFONIC ACID (three-letter code: EPE) (formula:  $C_8H_{18}N_2O_4S$ ).



Mol	Chain	Residues	Atoms					ZeroOcc	AltConf
4	A	1	Total	C	N	O	S	0	0
			15	8	2	4	1		
4	B	1	Total	C	N	O	S	0	0
			15	8	2	4	1		

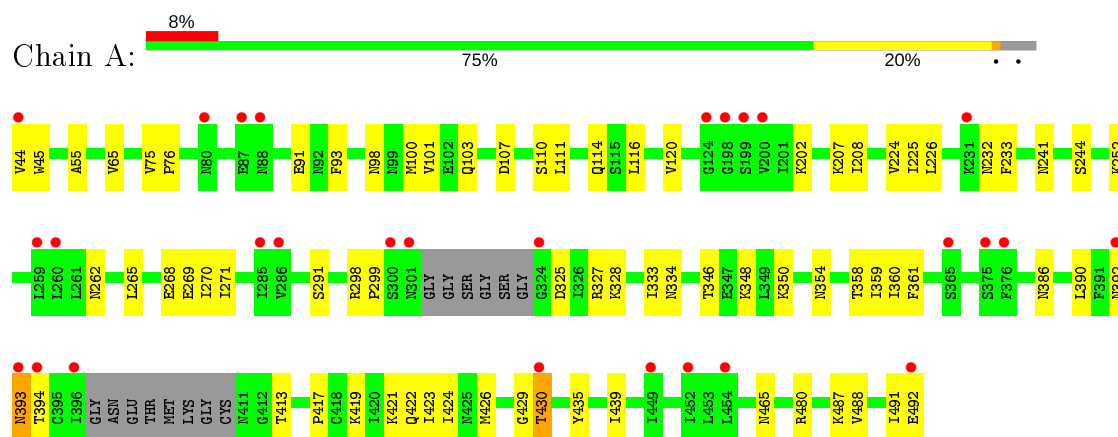
- Molecule 5 is water.

Mol	Chain	Residues	Atoms		ZeroOcc	AltConf
5	A	159	Total	O	0	0
			159	159		
5	B	82	Total	O	0	0
			82	82		

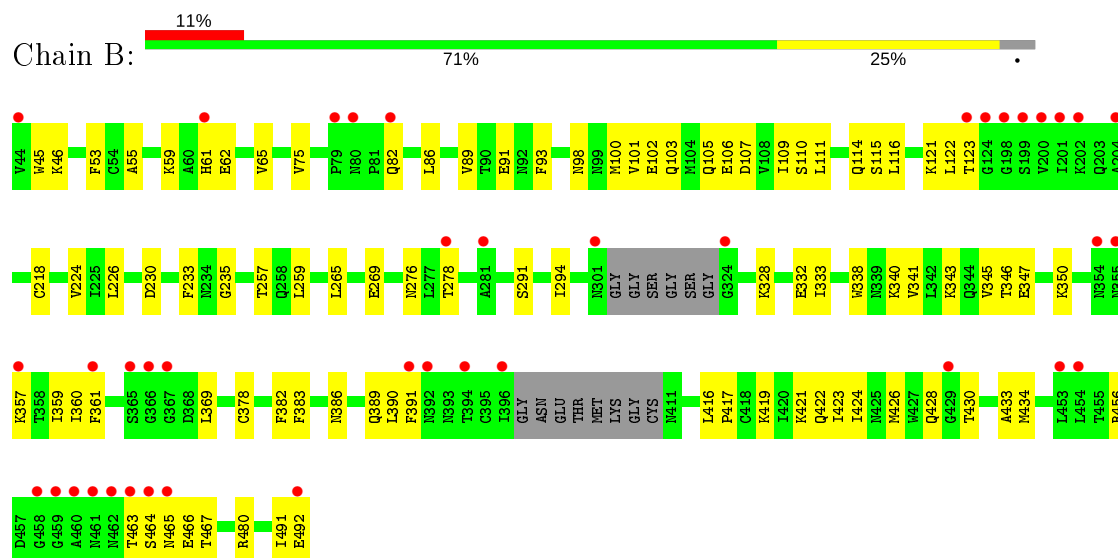
### 3 Residue-property plots [i](#)

These plots are drawn for all protein, RNA, DNA and oligosaccharide chains in the entry. The first graphic for a chain summarises the proportions of the various outlier classes displayed in the second graphic. The second graphic shows the sequence view annotated by issues in geometry and electron density. Residues are color-coded according to the number of geometric quality criteria for which they contain at least one outlier: green = 0, yellow = 1, orange = 2 and red = 3 or more. A red dot above a residue indicates a poor fit to the electron density ( $RSRZ > 2$ ). Stretches of 2 or more consecutive residues without any outlier are shown as a green connector. Residues present in the sample, but not in the model, are shown in grey.

- Molecule 1: clade A/E 93TH057 HIV-1 gp120 core



- Molecule 1: clade A/E 93TH057 HIV-1 gp120 core





## 4 Data and refinement statistics

Property	Value	Source
Space group	P 1 21 1	Depositor
Cell constants a, b, c, $\alpha$ , $\beta$ , $\gamma$	64.64Å 68.22Å 94.02Å 90.00° 91.48° 90.00°	Depositor
Resolution (Å)	25.07 – 2.10 25.07 – 2.08	Depositor EDS
% Data completeness (in resolution range)	84.4 (25.07-2.10) 81.1 (25.07-2.08)	Depositor EDS
$R_{merge}$	0.06	Depositor
$R_{sym}$	0.08	Depositor
$\langle I/\sigma(I) \rangle$ <sup>1</sup>	0.94 (at 2.08Å)	Xtriage
Refinement program	PHENIX 1.8_1069	Depositor
R, $R_{free}$	0.193 , 0.232 0.202 , 0.238	Depositor DCC
$R_{free}$ test set	2161 reflections (4.97%)	wwPDB-VP
Wilson B-factor (Å <sup>2</sup> )	35.0	Xtriage
Anisotropy	0.386	Xtriage
Bulk solvent $k_{sol}$ (e/Å <sup>3</sup> ), $B_{sol}$ (Å <sup>2</sup> )	0.35 , 50.6	EDS
L-test for twinning <sup>2</sup>	$\langle  L  \rangle = 0.50$ , $\langle L^2 \rangle = 0.33$	Xtriage
Estimated twinning fraction	0.025 for h,-k,-l	Xtriage
$F_o, F_c$ correlation	0.95	EDS
Total number of atoms	5981	wwPDB-VP
Average B, all atoms (Å <sup>2</sup> )	55.0	wwPDB-VP

Xtriage's analysis on translational NCS is as follows: *The largest off-origin peak in the Patterson function is 5.75% of the height of the origin peak. No significant pseudotranslation is detected.*

<sup>1</sup>Intensities estimated from amplitudes.

<sup>2</sup>Theoretical values of  $\langle |L| \rangle$ ,  $\langle L^2 \rangle$  for acentric reflections are 0.5, 0.333 respectively for untwinned datasets, and 0.375, 0.2 for perfectly twinned datasets.

## 5 Model quality

### 5.1 Standard geometry

Bond lengths and bond angles in the following residue types are not validated in this section: EPE, NAG, OLY

The Z score for a bond length (or angle) is the number of standard deviations the observed value is removed from the expected value. A bond length (or angle) with  $|Z| > 5$  is considered an outlier worth inspection. RMSZ is the root-mean-square of all Z scores of the bond lengths (or angles).

Mol	Chain	Bond lengths		Bond angles	
		RMSZ	$\# Z  > 5$	RMSZ	$\# Z  > 5$
1	A	0.21	0/2709	0.38	0/3678
1	B	0.23	0/2709	0.39	0/3678
All	All	0.22	0/5418	0.39	0/7356

There are no bond length outliers.

There are no bond angle outliers.

There are no chirality outliers.

There are no planarity outliers.

### 5.2 Too-close contacts

In the following table, the Non-H and H(model) columns list the number of non-hydrogen atoms and hydrogen atoms in the chain respectively. The H(added) column lists the number of hydrogen atoms added and optimized by MolProbity. The Clashes column lists the number of clashes within the asymmetric unit, whereas Symm-Clashes lists symmetry related clashes.

Mol	Chain	Non-H	H(model)	H(added)	Clashes	Symm-Clashes
1	A	2654	0	2589	62	0
1	B	2654	0	2589	80	0
2	A	154	0	143	5	0
2	B	154	0	143	2	0
3	A	23	24	24	3	0
3	B	23	24	24	2	0
4	A	15	0	17	3	0
4	B	15	0	17	5	0
5	A	159	0	0	7	0
5	B	82	0	0	4	0
All	All	5933	48	5546	150	0

The all-atom clashscore is defined as the number of clashes found per 1000 atoms (including hydrogen atoms). The all-atom clashscore for this structure is 13.

All (150) close contacts within the same asymmetric unit are listed below, sorted by their clash magnitude.

Atom-1	Atom-2	Interatomic distance (Å)	Clash overlap (Å)
1:B:276:ASN:OD1	1:B:278:THR:OG1	1.94	0.85
1:B:419:LYS:HE3	1:B:421:LYS:NZ	1.92	0.83
1:A:325:ASP:OD1	5:A:696:HOH:O	2.00	0.79
1:A:360:ILE:HA	1:A:393:ASN:ND2	1.97	0.79
1:B:332:GLU:C	1:B:333:ILE:HD12	2.06	0.76
1:B:328:LYS:NZ	5:B:676:HOH:O	2.10	0.75
2:B:511:NAG:H81	5:B:605:HOH:O	1.87	0.74
1:A:488:VAL:O	5:A:637:HOH:O	2.04	0.74
1:A:350:LYS:NZ	5:A:610:HOH:O	2.21	0.74
3:B:512:OLY:H17	3:B:512:OLY:H12	1.70	0.72
1:B:123:THR:HG23	1:B:430:THR:HG23	1.70	0.72
1:B:294:ILE:HG13	1:B:333:ILE:HD11	1.70	0.72
1:A:480:ARG:NH2	5:A:646:HOH:O	2.22	0.71
1:A:346:THR:HG23	1:A:359:ILE:HB	1.73	0.70
1:A:430:THR:O	5:A:749:HOH:O	2.10	0.70
1:B:378:CYS:HB3	1:B:383:PHE:CE1	2.27	0.69
1:B:390:LEU:HD11	1:B:416:LEU:HD11	1.75	0.69
1:B:346:THR:HG23	1:B:359:ILE:HB	1.75	0.69
1:B:419:LYS:HE3	1:B:421:LYS:HZ1	1.57	0.69
3:A:512:OLY:H17	3:A:512:OLY:H12	1.76	0.68
1:B:369:LEU:CD1	1:B:421:LYS:HE2	2.24	0.68
1:A:429:GLY:HA2	3:A:512:OLY:H19	1.75	0.68
1:B:123:THR:HG23	1:B:430:THR:CG2	2.25	0.67
4:B:513:EPE:O8	4:B:513:EPE:H52	1.94	0.67
1:A:426:MET:SD	1:A:430:THR:OG1	2.51	0.67
1:A:421:LYS:HB3	1:A:421:LYS:NZ	2.10	0.66
1:B:82:GLN:OE1	5:B:674:HOH:O	2.12	0.66
1:A:423:ILE:C	1:A:424:ILE:HD12	2.15	0.66
1:B:101:VAL:HG21	1:B:480:ARG:HG2	1.76	0.66
1:A:421:LYS:HB3	1:A:421:LYS:HZ3	1.61	0.65
1:A:65:VAL:HG11	1:A:208:ILE:HD12	1.77	0.65
1:A:45:TRP:HB3	1:A:491:ILE:HD13	1.80	0.64
4:A:513:EPE:O8	4:A:513:EPE:H52	1.99	0.63
1:B:360:ILE:HD12	1:B:360:ILE:N	2.14	0.63
1:B:369:LEU:HD12	1:B:421:LYS:HE2	1.80	0.63
1:B:357:LYS:HB3	1:B:464:SER:O	1.98	0.63
1:B:426:MET:HE3	1:B:433:ALA:HB2	1.80	0.63

*Continued on next page...*

*Continued from previous page...*

Atom-1	Atom-2	Interatomic distance (Å)	Clash overlap (Å)
1:B:93:PHE:HB2	1:B:233:PHE:HZ	1.64	0.62
1:A:107:ASP:OD2	4:A:513:EPE:H72	2.00	0.62
1:A:429:GLY:O	5:A:749:HOH:O	2.16	0.62
1:B:426:MET:CE	1:B:433:ALA:HB2	2.29	0.61
1:B:419:LYS:HE3	1:B:421:LYS:HZ2	1.66	0.61
1:A:207:LYS:HE2	1:A:439:ILE:HG23	1.84	0.60
1:A:232:ASN:HA	1:A:271:ILE:HD11	1.85	0.59
1:B:357:LYS:NZ	1:B:464:SER:HA	2.18	0.59
3:B:512:0LY:C19	3:B:512:0LY:H12	2.34	0.58
1:B:338:TRP:NE1	1:B:390:LEU:O	2.31	0.58
1:B:423:ILE:HD12	1:B:423:ILE:N	2.18	0.58
1:B:389:GLN:HG3	5:B:680:HOH:O	2.04	0.57
1:A:101:VAL:HG21	1:A:480:ARG:HG2	1.86	0.57
2:A:504:NAG:HN2	1:B:61:HIS:CG	2.23	0.56
1:A:224:VAL:HG11	1:A:244:SER:HB2	1.87	0.56
1:A:241:ASN:OD1	5:A:716:HOH:O	2.17	0.56
1:A:270:ILE:O	1:A:348:LYS:HE2	2.05	0.56
1:A:360:ILE:HA	1:A:393:ASN:HD21	1.69	0.56
3:A:512:0LY:C19	3:A:512:0LY:H12	2.35	0.56
1:B:224:VAL:HG13	1:B:491:ILE:HD11	1.87	0.56
1:A:392:ASN:OD1	1:A:394:THR:HG23	2.05	0.56
1:A:491:ILE:HG22	1:A:492:GLU:N	2.22	0.56
1:B:107:ASP:OD2	4:B:513:EPE:H72	2.05	0.55
1:B:333:ILE:HD12	1:B:333:ILE:N	2.21	0.55
1:B:428:GLN:OE1	1:B:428:GLN:N	2.39	0.55
1:B:390:LEU:CD1	1:B:416:LEU:HD11	2.36	0.54
1:A:413:THR:OG1	2:A:507:NAG:H81	2.08	0.53
1:B:111:LEU:O	1:B:111:LEU:HD23	2.09	0.53
1:B:46:LYS:HG2	1:B:492:GLU:OE2	2.09	0.53
1:A:325:ASP:CG	1:A:328:LYS:HG3	2.29	0.52
1:A:120:VAL:HG22	1:A:202:LYS:HG2	1.91	0.52
1:A:424:ILE:HD12	1:A:424:ILE:N	2.25	0.52
1:B:93:PHE:HB2	1:B:233:PHE:CZ	2.44	0.52
1:B:230:ASP:HB2	1:B:233:PHE:HB2	1.91	0.52
1:B:102:GLU:O	1:B:106:GLU:HG3	2.10	0.51
1:B:382:PHE:CD2	1:B:424:ILE:CD1	2.93	0.51
1:B:386:ASN:HB3	1:B:417:PRO:HG2	1.93	0.51
1:B:382:PHE:CG	1:B:424:ILE:HD13	2.46	0.51
1:A:226:LEU:HD12	1:A:487:LYS:HE3	1.93	0.51
1:A:110:SER:O	1:A:114:GLN:HG3	2.10	0.51
1:A:111:LEU:HD23	1:A:111:LEU:C	2.32	0.50

*Continued on next page...*

*Continued from previous page...*

Atom-1	Atom-2	Interatomic distance (Å)	Clash overlap (Å)
1:A:361:PHE:HB2	1:A:393:ASN:OD1	2.11	0.49
1:B:257:THR:O	1:B:259:LEU:N	2.42	0.49
1:B:357:LYS:HZ3	1:B:464:SER:HA	1.77	0.49
1:B:103:GLN:HB3	4:B:513:EPE:C8	2.42	0.49
1:B:121:LYS:HE2	1:B:123:THR:OG1	2.12	0.49
1:B:59:LYS:HD2	1:B:62:GLU:OE2	2.12	0.49
1:A:103:GLN:HB3	4:A:513:EPE:C8	2.43	0.49
1:A:91:GLU:OE1	1:A:487:LYS:NZ	2.32	0.48
1:A:392:ASN:O	1:A:394:THR:N	2.45	0.48
1:B:369:LEU:HD13	1:B:421:LYS:HE2	1.94	0.48
1:A:44:VAL:HG13	1:A:492:GLU:CD	2.35	0.48
1:B:382:PHE:CG	1:B:424:ILE:CD1	2.97	0.47
1:B:423:ILE:C	1:B:424:ILE:HG13	2.35	0.47
1:B:278:THR:O	1:B:456:ARG:NH2	2.47	0.47
1:A:45:TRP:HB3	1:A:491:ILE:CD1	2.44	0.47
2:A:504:NAG:H3	1:B:61:HIS:CD2	2.50	0.47
1:B:341:VAL:O	1:B:345:VAL:HG23	2.15	0.47
1:B:111:LEU:C	1:B:111:LEU:HD23	2.35	0.46
1:A:354:ASN:HA	2:A:508:NAG:H81	1.97	0.46
1:A:252:LYS:CE	1:A:262:ASN:HB3	2.46	0.46
1:B:91:GLU:HG3	1:B:226:LEU:HD13	1.97	0.46
1:A:325:ASP:OD2	1:A:328:LYS:HG3	2.16	0.46
1:A:269:GLU:OE1	1:A:348:LYS:NZ	2.46	0.45
1:B:265:LEU:HD11	1:B:291:SER:OG	2.16	0.45
1:B:116:LEU:N	1:B:116:LEU:HD12	2.31	0.45
1:B:86:LEU:HB3	1:B:89:VAL:HG21	1.99	0.45
1:B:65:VAL:HG11	1:B:115:SER:HB3	1.97	0.45
1:B:347:GLU:O	1:B:350:LYS:HB2	2.16	0.45
1:B:53:PHE:CZ	1:B:218:CYS:HB2	2.52	0.45
1:A:421:LYS:NZ	1:A:423:ILE:O	2.49	0.45
1:B:294:ILE:HG13	1:B:333:ILE:CD1	2.43	0.45
1:B:361:PHE:HB3	1:B:391:PHE:HB3	1.99	0.45
1:B:45:TRP:NE1	1:B:91:GLU:OE2	2.46	0.45
1:A:327:ARG:O	1:A:419:LYS:HA	2.16	0.45
1:B:422:GLN:O	1:B:434:MET:HA	2.17	0.44
1:B:360:ILE:HB	1:B:467:THR:HG22	2.00	0.44
1:B:55:ALA:HA	1:B:75:VAL:O	2.18	0.44
1:A:334:ASN:HA	2:A:507:NAG:H82	2.00	0.44
1:B:103:GLN:HB3	4:B:513:EPE:H82	1.99	0.44
1:A:75:VAL:HB	1:A:76:PRO:HD2	2.00	0.43
1:B:98:ASN:OD1	1:B:100:MET:HG3	2.19	0.43

*Continued on next page...*

*Continued from previous page...*

Atom-1	Atom-2	Interatomic distance (Å)	Clash overlap (Å)
1:A:116:LEU:HD12	1:A:116:LEU:N	2.34	0.43
1:A:55:ALA:HA	1:A:75:VAL:O	2.19	0.43
1:B:105:GLN:O	1:B:109:ILE:HG13	2.18	0.43
1:A:224:VAL:HG12	1:A:225:ILE:N	2.34	0.43
1:A:232:ASN:OD1	1:A:268:GLU:HB2	2.19	0.43
1:B:294:ILE:O	1:B:294:ILE:HG23	2.19	0.43
1:A:226:LEU:HD12	1:A:487:LYS:CE	2.48	0.42
1:B:359:ILE:C	1:B:360:ILE:HD12	2.39	0.42
1:A:358:THR:HB	1:A:465:ASN:OD1	2.18	0.42
1:B:224:VAL:CG1	1:B:491:ILE:HD11	2.50	0.42
1:B:357:LYS:NZ	1:B:463:THR:O	2.53	0.42
1:A:252:LYS:HE3	1:A:262:ASN:HB3	2.02	0.42
1:B:110:SER:O	1:B:114:GLN:HG3	2.20	0.42
1:B:426:MET:HE2	1:B:433:ALA:HB2	2.01	0.42
1:B:269:GLU:HB3	2:B:505:NAG:H61	2.01	0.41
1:B:340:LYS:O	1:B:343:LYS:HB3	2.20	0.41
1:A:93:PHE:HB2	1:A:233:PHE:HZ	1.84	0.41
1:B:357:LYS:HD3	1:B:466:GLU:HG2	2.02	0.41
1:A:386:ASN:HB3	1:A:417:PRO:HG2	2.01	0.41
1:A:361:PHE:H	1:A:393:ASN:CG	2.24	0.41
1:A:44:VAL:HG13	1:A:492:GLU:CG	2.50	0.41
1:B:423:ILE:CD1	1:B:423:ILE:N	2.84	0.41
1:B:378:CYS:HB3	1:B:383:PHE:CD1	2.56	0.41
4:B:513:EPE:O8	4:B:513:EPE:C5	2.67	0.41
1:A:265:LEU:HD11	1:A:291:SER:OG	2.20	0.41
1:A:333:ILE:HD12	1:A:390:LEU:HD21	2.03	0.40
1:B:233:PHE:CE2	1:B:235:GLY:HA2	2.57	0.40
1:A:98:ASN:OD1	1:A:100:MET:HG3	2.22	0.40
1:B:122:LEU:HD12	1:B:122:LEU:N	2.37	0.40
1:A:298:ARG:HA	1:A:299:PRO:HD2	1.97	0.40
1:A:422:GLN:HB3	1:A:435:TYR:O	2.21	0.40

There are no symmetry-related clashes.

## 5.3 Torsion angles ⓘ

### 5.3.1 Protein backbone ⓘ

In the following table, the Percentiles column shows the percent Ramachandran outliers of the chain as a percentile score with respect to all X-ray entries followed by that with respect to entries of similar resolution.

The Analysed column shows the number of residues for which the backbone conformation was analysed, and the total number of residues.

Mol	Chain	Analysed	Favoured	Allowed	Outliers	Percentiles	
1	A	333/353 (94%)	316 (95%)	15 (4%)	2 (1%)	25	21
1	B	333/353 (94%)	324 (97%)	8 (2%)	1 (0%)	41	41
All	All	666/706 (94%)	640 (96%)	23 (4%)	3 (0%)	29	26

All (3) Ramachandran outliers are listed below:

Mol	Chain	Res	Type
1	A	393	ASN
1	A	430	THR
1	B	465	ASN

### 5.3.2 Protein sidechains ⓘ

In the following table, the Percentiles column shows the percent sidechain outliers of the chain as a percentile score with respect to all X-ray entries followed by that with respect to entries of similar resolution.

The Analysed column shows the number of residues for which the sidechain conformation was analysed, and the total number of residues.

Mol	Chain	Analysed	Rotameric	Outliers	Percentiles	
1	A	303/311 (97%)	303 (100%)	0	100	100
1	B	303/311 (97%)	303 (100%)	0	100	100
All	All	606/622 (97%)	606 (100%)	0	100	100

There are no protein residues with a non-rotameric sidechain to report.

Some sidechains can be flipped to improve hydrogen bonding and reduce clashes. All (1) such sidechains are listed below:

Mol	Chain	Res	Type
1	A	352	HIS

### 5.3.3 RNA ⓘ

There are no RNA molecules in this entry.

## 5.4 Non-standard residues in protein, DNA, RNA chains [i](#)

There are no non-standard protein/DNA/RNA residues in this entry.

## 5.5 Carbohydrates [i](#)

There are no monosaccharides in this entry.

## 5.6 Ligand geometry [i](#)

26 ligands are modelled in this entry.

In the following table, the Counts columns list the number of bonds (or angles) for which Mogul statistics could be retrieved, the number of bonds (or angles) that are observed in the model and the number of bonds (or angles) that are defined in the Chemical Component Dictionary. The Link column lists molecule types, if any, to which the group is linked. The Z score for a bond length (or angle) is the number of standard deviations the observed value is removed from the expected value. A bond length (or angle) with  $|Z| > 2$  is considered an outlier worth inspection. RMSZ is the root-mean-square of all Z scores of the bond lengths (or angles).

Mol	Type	Chain	Res	Link	Bond lengths			Bond angles		
					Counts	RMSZ	$\# Z  > 2$	Counts	RMSZ	$\# Z  > 2$
2	NAG	A	503	1	14,14,15	0.51	0	17,19,21	0.78	0
2	NAG	B	508	1	14,14,15	0.54	0	17,19,21	0.63	0
3	0LY	A	512	-	24,24,24	1.39	4 (16%)	34,36,36	1.38	4 (11%)
2	NAG	B	502	1	14,14,15	0.54	0	17,19,21	0.65	0
2	NAG	B	507	1	14,14,15	0.61	0	17,19,21	0.88	1 (5%)
2	NAG	A	507	1	14,14,15	0.53	0	17,19,21	0.65	0
2	NAG	B	506	1	14,14,15	0.55	0	17,19,21	0.59	0
2	NAG	A	502	1	14,14,15	0.51	0	17,19,21	0.65	0
2	NAG	A	506	1	14,14,15	0.55	0	17,19,21	0.61	0
2	NAG	A	501	1	14,14,15	0.54	0	17,19,21	0.72	0
2	NAG	B	504	1	14,14,15	0.35	0	17,19,21	0.72	0
2	NAG	B	503	1	14,14,15	0.49	0	17,19,21	0.82	0
2	NAG	B	509	1	14,14,15	0.51	0	17,19,21	0.69	0
2	NAG	A	504	1	14,14,15	0.54	0	17,19,21	0.66	0
2	NAG	B	501	1	14,14,15	0.54	0	17,19,21	0.59	0
2	NAG	A	505	1	14,14,15	0.51	0	17,19,21	0.72	0
4	EPE	B	513	-	15,15,15	2.46	4 (26%)	18,20,20	3.99	6 (33%)
2	NAG	A	508	1	14,14,15	0.59	0	17,19,21	0.61	0
2	NAG	B	510	1	14,14,15	0.26	0	17,19,21	0.79	0
2	NAG	A	510	1	14,14,15	0.27	0	17,19,21	0.79	0
2	NAG	B	511	1	14,14,15	0.51	0	17,19,21	0.71	0
2	NAG	B	505	1	14,14,15	0.54	0	17,19,21	0.68	0



Mol	Type	Chain	Res	Link	Bond lengths			Bond angles		
					Counts	RMSZ	# Z  > 2	Counts	RMSZ	# Z  > 2
2	NAG	A	509	1	14,14,15	0.55	0	17,19,21	0.66	0
3	OLY	B	512	-	24,24,24	1.37	4 (16%)	34,36,36	1.44	6 (17%)
2	NAG	A	511	1	14,14,15	0.50	0	17,19,21	0.85	0
4	EPE	A	513	-	15,15,15	2.45	4 (26%)	18,20,20	4.04	6 (33%)

In the following table, the Chirals column lists the number of chiral outliers, the number of chiral centers analysed, the number of these observed in the model and the number defined in the Chemical Component Dictionary. Similar counts are reported in the Torsion and Rings columns. '-' means no outliers of that kind were identified.

Mol	Type	Chain	Res	Link	Chirals	Torsions	Rings
2	NAG	A	503	1	-	0/6/23/26	0/1/1/1
2	NAG	B	508	1	-	0/6/23/26	0/1/1/1
3	OLY	A	512	-	-	2/12/28/28	1/2/2/2
2	NAG	B	502	1	-	0/6/23/26	0/1/1/1
2	NAG	B	507	1	-	0/6/23/26	0/1/1/1
2	NAG	A	507	1	-	0/6/23/26	0/1/1/1
2	NAG	B	506	1	-	2/6/23/26	0/1/1/1
2	NAG	A	502	1	-	2/6/23/26	0/1/1/1
2	NAG	A	506	1	-	0/6/23/26	0/1/1/1
2	NAG	A	501	1	-	1/6/23/26	0/1/1/1
2	NAG	B	504	1	-	0/6/23/26	0/1/1/1
2	NAG	B	503	1	-	0/6/23/26	0/1/1/1
2	NAG	B	509	1	-	0/6/23/26	0/1/1/1
2	NAG	A	504	1	-	0/6/23/26	0/1/1/1
2	NAG	B	501	1	-	0/6/23/26	0/1/1/1
2	NAG	A	505	1	-	0/6/23/26	0/1/1/1
4	EPE	B	513	-	-	4/9/19/19	0/1/1/1
2	NAG	A	508	1	-	0/6/23/26	0/1/1/1
2	NAG	B	510	1	-	3/6/23/26	0/1/1/1
2	NAG	A	510	1	-	3/6/23/26	0/1/1/1
2	NAG	B	511	1	-	2/6/23/26	0/1/1/1
2	NAG	B	505	1	-	0/6/23/26	0/1/1/1
2	NAG	A	509	1	-	0/6/23/26	0/1/1/1
3	OLY	B	512	-	-	0/12/28/28	0/2/2/2
2	NAG	A	511	1	-	2/6/23/26	0/1/1/1
4	EPE	A	513	-	-	4/9/19/19	0/1/1/1

All (16) bond length outliers are listed below:

Mol	Chain	Res	Type	Atoms	Z	Observed(Å)	Ideal(Å)
4	B	513	EPE	O2S-S	5.08	1.60	1.45
4	B	513	EPE	O1S-S	5.04	1.59	1.45
4	A	513	EPE	O2S-S	5.01	1.59	1.45
4	A	513	EPE	O1S-S	4.99	1.59	1.45
4	A	513	EPE	O3S-S	4.26	1.62	1.47
4	B	513	EPE	O3S-S	4.24	1.62	1.47
4	A	513	EPE	O8-C8	-3.91	1.21	1.42
4	B	513	EPE	O8-C8	-3.88	1.22	1.42
3	A	512	0LY	C13-C12	3.22	1.55	1.52
3	B	512	0LY	C13-C12	3.13	1.55	1.52
3	A	512	0LY	C17-C16	2.78	1.56	1.53
3	A	512	0LY	C17-C12	2.60	1.54	1.52
3	B	512	0LY	C9-N8	2.48	1.41	1.35
3	A	512	0LY	C9-N8	2.47	1.41	1.35
3	B	512	0LY	C17-C16	2.43	1.56	1.53
3	B	512	0LY	C17-C12	2.26	1.54	1.52

All (23) bond angle outliers are listed below:

Mol	Chain	Res	Type	Atoms	Z	Observed(°)	Ideal(°)
4	A	513	EPE	O1S-S-C10	11.41	120.66	106.92
4	B	513	EPE	O1S-S-C10	11.29	120.50	106.92
4	B	513	EPE	O2S-S-C10	9.05	117.81	106.92
4	A	513	EPE	O2S-S-C10	8.96	117.70	106.92
4	A	513	EPE	O3S-S-O2S	-5.78	97.15	111.27
4	B	513	EPE	O3S-S-O2S	-5.54	97.73	111.27
4	A	513	EPE	O3S-S-O1S	-5.27	98.40	111.27
4	B	513	EPE	O3S-S-O1S	-4.91	99.29	111.27
3	B	512	0LY	C14-N15-C16	-4.72	114.12	119.06
3	A	512	0LY	C14-N15-C16	-4.70	114.14	119.06
3	B	512	0LY	C10-C9-N8	3.54	117.91	112.31
3	A	512	0LY	C13-C12-N11	-2.83	106.80	110.29
3	A	512	0LY	C10-C9-N8	2.81	116.75	112.31
3	B	512	0LY	C5-N8-C9	-2.48	123.23	127.53
3	B	512	0LY	O23-C9-C10	-2.43	118.34	121.30
4	A	513	EPE	O8-C8-C7	2.41	121.20	111.19
4	B	513	EPE	O8-C8-C7	2.40	121.14	111.19
4	B	513	EPE	O3S-S-C10	-2.36	101.95	105.77
3	B	512	0LY	C17-C12-N11	2.25	113.07	110.29
4	A	513	EPE	O3S-S-C10	-2.19	102.23	105.77
3	A	512	0LY	O23-C9-C10	-2.15	118.67	121.30
3	B	512	0LY	C12-N11-C10	2.15	126.65	123.08
2	B	507	NAG	C1-O5-C5	2.02	114.93	112.19

There are no chirality outliers.

All (25) torsion outliers are listed below:

Mol	Chain	Res	Type	Atoms
2	B	511	NAG	C8-C7-N2-C2
2	B	511	NAG	O7-C7-N2-C2
2	B	506	NAG	O5-C5-C6-O6
2	A	511	NAG	C8-C7-N2-C2
2	A	511	NAG	O7-C7-N2-C2
2	B	506	NAG	C4-C5-C6-O6
2	B	510	NAG	C8-C7-N2-C2
2	B	510	NAG	O7-C7-N2-C2
2	A	510	NAG	C8-C7-N2-C2
2	A	510	NAG	O7-C7-N2-C2
4	B	513	EPE	N4-C7-C8-O8
3	A	512	0LY	C13-C12-N11-C10
4	A	513	EPE	N4-C7-C8-O8
2	B	510	NAG	O5-C5-C6-O6
2	A	510	NAG	O5-C5-C6-O6
4	B	513	EPE	C8-C7-N4-C5
2	A	501	NAG	O5-C5-C6-O6
4	A	513	EPE	C8-C7-N4-C5
4	B	513	EPE	C9-C10-S-O2S
4	A	513	EPE	C9-C10-S-O2S
4	B	513	EPE	C10-C9-N1-C6
4	A	513	EPE	C10-C9-N1-C6
2	A	502	NAG	C8-C7-N2-C2
3	A	512	0LY	C17-C12-N11-C10
2	A	502	NAG	O7-C7-N2-C2

All (1) ring outliers are listed below:

Mol	Chain	Res	Type	Atoms
3	A	512	0LY	C12-C13-C14-C16-C17-N15

9 monomers are involved in 20 short contacts:

Mol	Chain	Res	Type	Clashes	Symm-Clashes
3	A	512	0LY	3	0
2	A	507	NAG	2	0
2	A	504	NAG	2	0
4	B	513	EPE	5	0
2	A	508	NAG	1	0
2	B	511	NAG	1	0

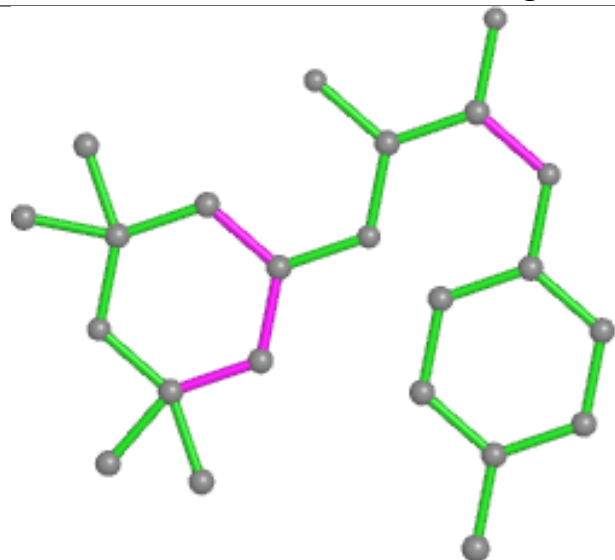
*Continued on next page...*

*Continued from previous page...*

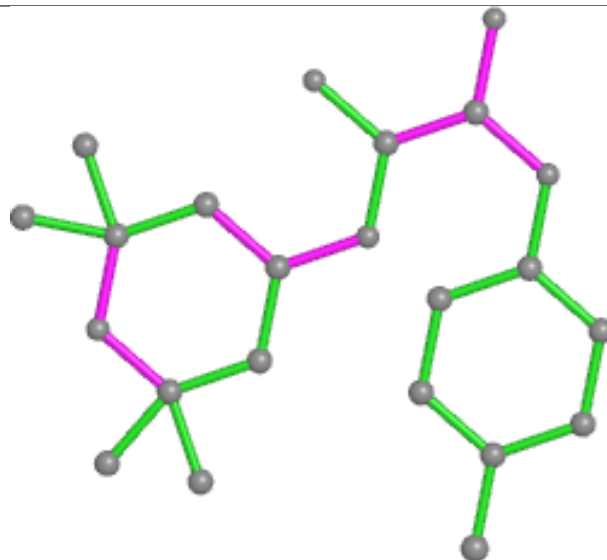
Mol	Chain	Res	Type	Clashes	Symm-Clashes
2	B	505	NAG	1	0
3	B	512	0LY	2	0
4	A	513	EPE	3	0

The following is a two-dimensional graphical depiction of Mogul quality analysis of bond lengths, bond angles, torsion angles, and ring geometry for all instances of the Ligand of Interest. In addition, ligands with molecular weight > 250 and outliers as shown on the validation Tables will also be included. For torsion angles, if less than 5% of the Mogul distribution of torsion angles is within 10 degrees of the torsion angle in question, then that torsion angle is considered an outlier. Any bond that is central to one or more torsion angles identified as an outlier by Mogul will be highlighted in the graph. For rings, the root-mean-square deviation (RMSD) between the ring in question and similar rings identified by Mogul is calculated over all ring torsion angles. If the average RMSD is greater than 60 degrees and the minimal RMSD between the ring in question and any Mogul-identified rings is also greater than 60 degrees, then that ring is considered an outlier. The outliers are highlighted in purple. The color gray indicates Mogul did not find sufficient equivalents in the CSD to analyse the geometry.

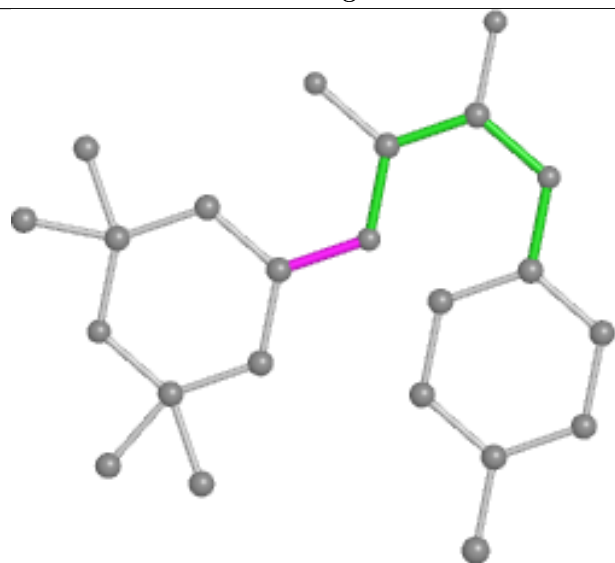
## Ligand 0LY A 512



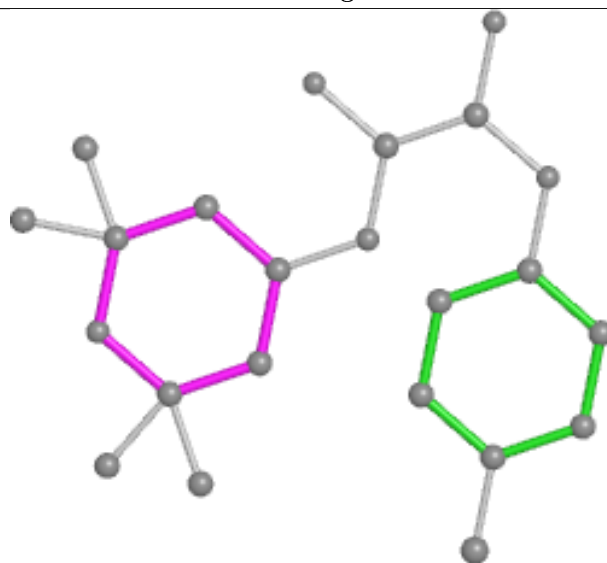
Bond lengths



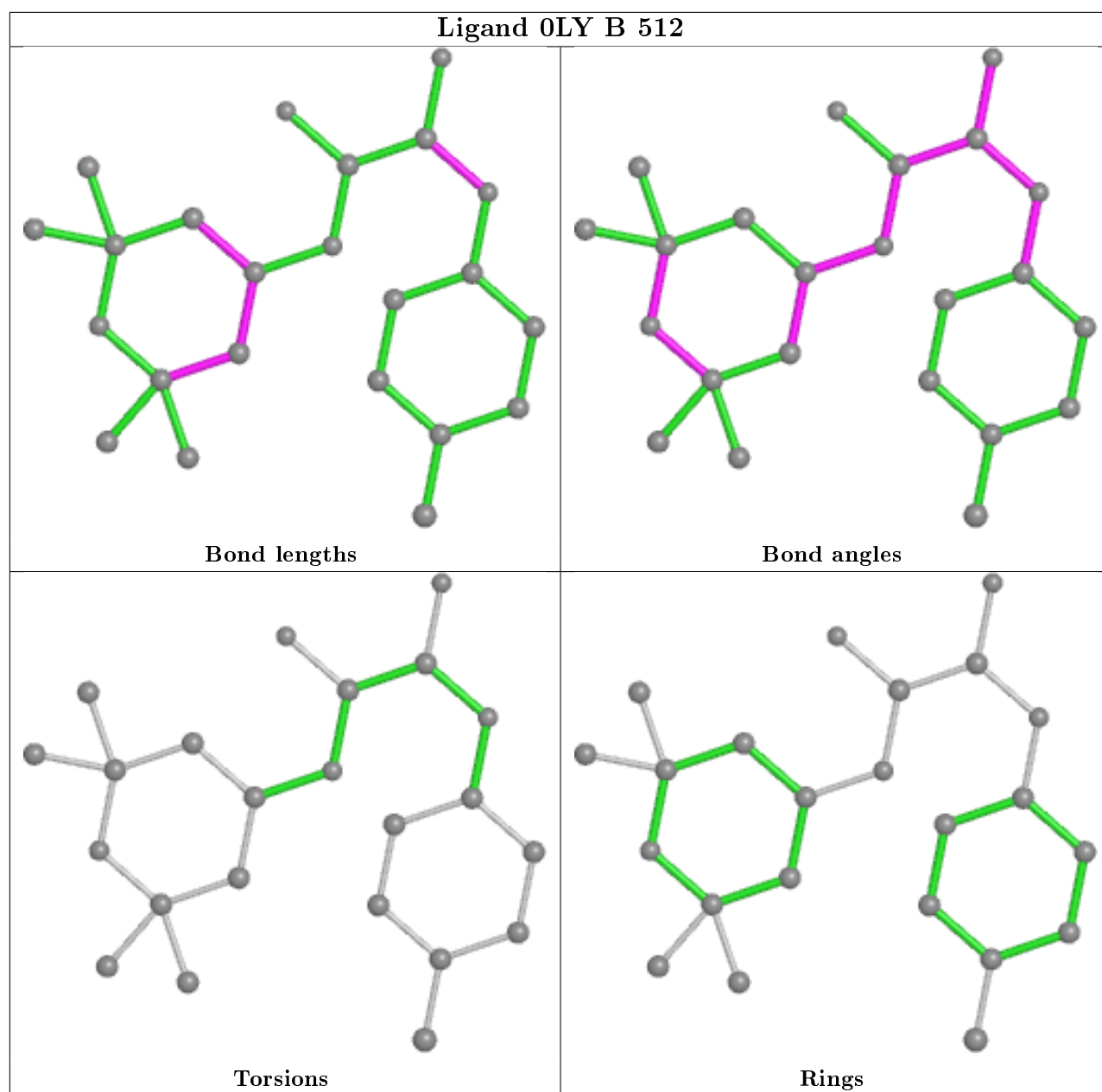
Bond angles



Torsions



Rings



## 5.7 Other polymers [i](#)

There are no such residues in this entry.

## 5.8 Polymer linkage issues [i](#)

There are no chain breaks in this entry.

## 6 Fit of model and data ⓘ

### 6.1 Protein, DNA and RNA chains ⓘ

In the following table, the column labelled ‘#RSRZ> 2’ contains the number (and percentage) of RSRZ outliers, followed by percent RSRZ outliers for the chain as percentile scores relative to all X-ray entries and entries of similar resolution. The OWAB column contains the minimum, median, 95<sup>th</sup> percentile and maximum values of the occupancy-weighted average B-factor per residue. The column labelled ‘Q< 0.9’ lists the number of (and percentage) of residues with an average occupancy less than 0.9.

Mol	Chain	Analysed	<RSRZ>	#RSRZ>2	OWAB(Å <sup>2</sup> )	Q<0.9
1	A	339/353 (96%)	0.27	28 (8%) 11 14	27, 42, 81, 107	0
1	B	339/353 (96%)	0.62	40 (11%) 4 5	30, 59, 107, 147	0
All	All	678/706 (96%)	0.45	68 (10%) 7 9	27, 49, 96, 147	0

All (68) RSRZ outliers are listed below:

Mol	Chain	Res	Type	RSRZ
1	B	123	THR	9.4
1	B	460	ALA	6.5
1	B	462	ASN	6.4
1	A	301	ASN	6.3
1	B	394	THR	5.9
1	B	199	SER	5.5
1	B	201	ILE	5.0
1	B	301	ASN	5.0
1	B	124	GLY	4.9
1	B	459	GLY	4.9
1	B	365	SER	4.7
1	B	392	ASN	4.6
1	A	324	GLY	4.6
1	B	463	THR	4.5
1	B	464	SER	4.3
1	B	278	THR	4.2
1	B	461	ASN	4.0
1	B	82	GLN	3.9
1	A	88	ASN	3.9
1	B	492	GLU	3.7
1	A	430	THR	3.7
1	A	124	GLY	3.7
1	B	396	ILE	3.7
1	B	324	GLY	3.5

*Continued on next page...*

*Continued from previous page...*

Mol	Chain	Res	Type	RSRZ
1	B	198	GLY	3.5
1	A	452	ILE	3.4
1	A	87	GLU	3.4
1	A	199	SER	3.4
1	B	61	HIS	3.4
1	B	281	ALA	3.3
1	B	354	ASN	3.3
1	B	465	ASN	3.3
1	A	392	ASN	3.3
1	B	44	VAL	3.3
1	A	198	GLY	3.2
1	B	458	GLY	3.1
1	B	357	LYS	3.0
1	A	393	ASN	3.0
1	A	300	SER	3.0
1	A	44	VAL	2.9
1	A	231	LYS	2.9
1	B	366	GLY	2.8
1	A	492	GLU	2.8
1	A	286	VAL	2.7
1	A	200	VAL	2.6
1	B	453	LEU	2.6
1	B	80	ASN	2.6
1	A	365	SER	2.6
1	A	285	ILE	2.5
1	B	367	GLY	2.5
1	B	454	LEU	2.5
1	A	80	ASN	2.4
1	B	200	VAL	2.4
1	A	449	ILE	2.4
1	A	260	LEU	2.4
1	A	394	THR	2.3
1	A	454	LEU	2.3
1	B	391	PHE	2.3
1	B	79	PRO	2.3
1	A	396	ILE	2.3
1	B	361	PHE	2.2
1	A	259	LEU	2.2
1	B	202	LYS	2.2
1	B	429	GLY	2.1
1	A	375	SER	2.1
1	B	355	ASN	2.0

*Continued on next page...*



*Continued from previous page...*

Mol	Chain	Res	Type	RSRZ
1	A	376	PHE	2.0
1	B	204	ALA	2.0

## 6.2 Non-standard residues in protein, DNA, RNA chains [i](#)

There are no non-standard protein/DNA/RNA residues in this entry.

## 6.3 Carbohydrates [i](#)

There are no monosaccharides in this entry.

## 6.4 Ligands [i](#)

In the following table, the Atoms column lists the number of modelled atoms in the group and the number defined in the chemical component dictionary. The B-factors column lists the minimum, median, 95<sup>th</sup> percentile and maximum values of B factors of atoms in the group. The column labelled 'Q<0.9' lists the number of atoms with occupancy less than 0.9.

Mol	Type	Chain	Res	Atoms	RSCC	RSR	B-factors(Å <sup>2</sup> )	Q<0.9
2	NAG	A	510	14/15	0.28	0.72	64,72,75,76	0
2	NAG	A	502	14/15	0.39	0.64	94,104,109,113	0
2	NAG	B	511	14/15	0.46	0.47	84,100,115,116	0
2	NAG	A	507	14/15	0.57	0.42	79,103,113,113	0
2	NAG	B	508	14/15	0.58	0.92	117,132,136,138	0
2	NAG	B	510	14/15	0.73	0.77	64,72,75,76	0
2	NAG	B	504	14/15	0.74	0.51	24,33,39,42	0
2	NAG	B	507	14/15	0.74	0.47	78,96,118,123	0
2	NAG	A	511	14/15	0.75	0.32	56,72,86,87	0
2	NAG	B	502	14/15	0.77	0.52	92,106,120,121	0
2	NAG	A	501	14/15	0.83	0.15	59,68,71,76	0
2	NAG	B	501	14/15	0.84	0.19	66,77,82,82	0
2	NAG	B	505	14/15	0.87	0.21	61,75,84,88	0
2	NAG	A	506	14/15	0.87	0.29	56,66,72,73	0
2	NAG	B	509	14/15	0.88	0.19	54,69,74,77	0
2	NAG	B	506	14/15	0.89	0.15	44,64,75,76	0
3	0LY	B	512	23/23	0.91	0.22	50,74,111,115	0
2	NAG	A	505	14/15	0.91	0.13	45,52,61,64	0
2	NAG	A	503	14/15	0.92	0.09	28,36,41,41	0
2	NAG	A	509	14/15	0.92	0.16	56,66,73,81	0
2	NAG	A	508	14/15	0.93	0.11	32,45,52,61	0

*Continued on next page...*

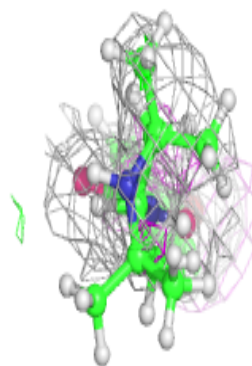
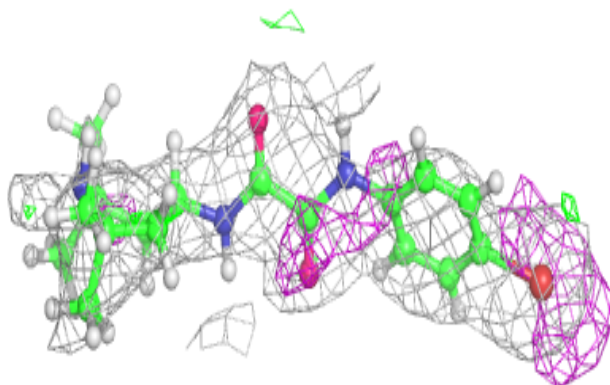
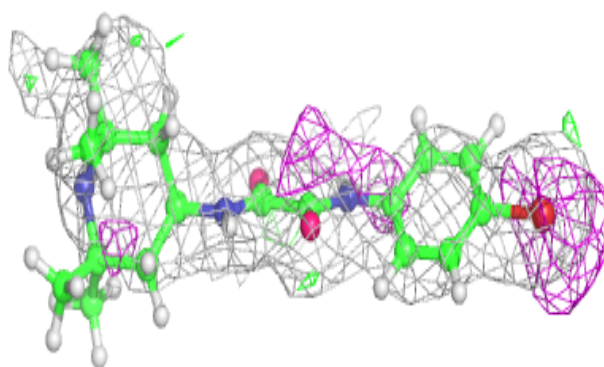
*Continued from previous page...*

Mol	Type	Chain	Res	Atoms	RSCC	RSR	B-factors( $\text{\AA}^2$ )	Q<0.9
2	NAG	A	504	14/15	0.94	0.22	40,53,63,64	0
3	0LY	A	512	23/23	0.96	0.17	32,61,79,82	0
2	NAG	B	503	14/15	0.96	0.13	28,34,40,40	0
4	EPE	A	513	15/15	0.96	0.18	27,33,46,48	0
4	EPE	B	513	15/15	0.98	0.14	35,43,54,54	0

The following is a graphical depiction of the model fit to experimental electron density of all instances of the Ligand of Interest. In addition, ligands with molecular weight > 250 and outliers as shown on the geometry validation Tables will also be included. Each fit is shown from different orientation to approximate a three-dimensional view.

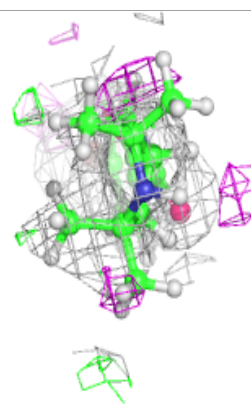
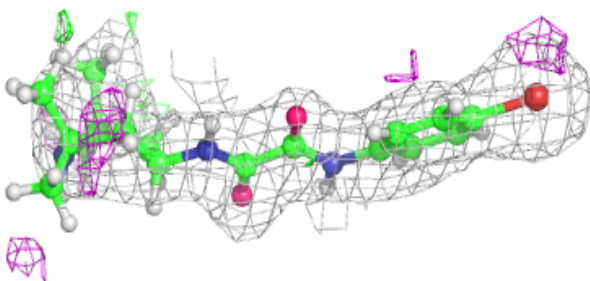
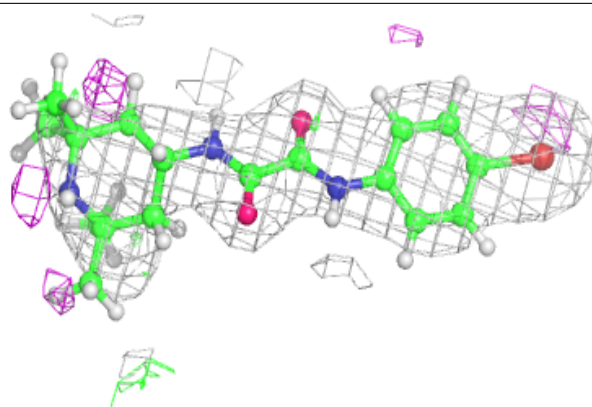
**Electron density around 0LY B 512:**

2mF<sub>o</sub>-DF<sub>c</sub> (at 0.7 rmsd) in gray  
mF<sub>o</sub>-DF<sub>c</sub> (at 3 rmsd) in purple (negative)  
and green (positive)



**Electron density around 0LY A 512:**

$2mF_o-DF_c$  (at 0.7 rmsd) in gray  
 $mF_o-DF_c$  (at 3 rmsd) in purple (negative)  
and green (positive)



## 6.5 Other polymers [i](#)

There are no such residues in this entry.