



Full wwPDB X-ray Structure Validation Report ⓘ

Aug 6, 2020 – 10:15 AM BST

PDB ID : 4DW7
Title : Crystal structure of an active-site mutant of the glycoprotein Erns from the pestivirus BVDV-1 in complex with a CpU dinucleotide
Authors : Krey, T.; Bontems, F.; Vonnrhein, C.; Vaney, M.-C.; Bricogne, G.; Ruemenapf, T.; Rey, F.A.
Deposited on : 2012-02-24
Resolution : 3.08 Å(reported)

This is a Full wwPDB X-ray Structure Validation Report for a publicly released PDB entry.

We welcome your comments at validation@mail.wwpdb.org

A user guide is available at

<https://www.wwpdb.org/validation/2017/XrayValidationReportHelp>

with specific help available everywhere you see the ⓘ symbol.

The following versions of software and data (see [references ⓘ](#)) were used in the production of this report:

MolProbity	:	4.02b-467
Mogul	:	1.8.5 (274361), CSD as541be (2020)
Xtriage (Phenix)	:	1.13
EDS	:	2.13.1
Percentile statistics	:	20191225.v01 (using entries in the PDB archive December 25th 2019)
Refmac	:	5.8.0158
CCP4	:	7.0.044 (Gargrove)
Ideal geometry (proteins)	:	Engh & Huber (2001)
Ideal geometry (DNA, RNA)	:	Parkinson et al. (1996)
Validation Pipeline (wwPDB-VP)	:	2.13.1

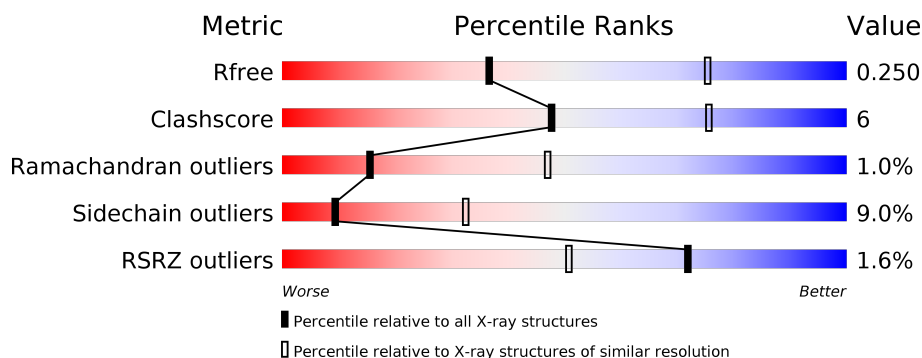
1 Overall quality at a glance

The following experimental techniques were used to determine the structure:

X-RAY DIFFRACTION

The reported resolution of this entry is 3.08 Å.

Percentile scores (ranging between 0-100) for global validation metrics of the entry are shown in the following graphic. The table shows the number of entries on which the scores are based.



Metric	Whole archive (#Entries)	Similar resolution (#Entries, resolution range(Å))
R_{free}	130704	1447 (3.10-3.06)
Clashscore	141614	1546 (3.10-3.06)
Ramachandran outliers	138981	1487 (3.10-3.06)
Sidechain outliers	138945	1486 (3.10-3.06)
RSRZ outliers	127900	1416 (3.10-3.06)

The table below summarises the geometric issues observed across the polymeric chains and their fit to the electron density. The red, orange, yellow and green segments on the lower bar indicate the fraction of residues that contain outliers for ≥ 3 , 2, 1 and 0 types of geometric quality criteria respectively. A grey segment represents the fraction of residues that are not modelled. The numeric value for each fraction is indicated below the corresponding segment, with a dot representing fractions $\leq 5\%$. The upper red bar (where present) indicates the fraction of residues that have poor fit to the electron density. The numeric value is given above the bar.

Mol	Chain	Length	Quality of chain
1	A	167	<div> <div style="width: 100%; height: 10px; background: linear-gradient(to right, red 1%, orange 1%, yellow 16%, green 75%, grey 8%);"></div> <div style="display: flex; justify-content: space-between; width: 100%;"> 75% 16% • 5% </div> </div>
1	B	167	<div> <div style="width: 100%; height: 10px; background: linear-gradient(to right, red 2%, orange 1%, yellow 21%, green 72%, grey 4%);"></div> <div style="display: flex; justify-content: space-between; width: 100%;"> 72% 21% • 5% </div> </div>
2	C	5	<div> <div style="width: 100%; height: 10px; background: linear-gradient(to right, yellow 20%, green 80%);"></div> <div style="display: flex; justify-content: space-between; width: 100%;"> 20% 80% </div> </div>
3	D	2	<div> <div style="width: 100%; height: 10px; background: linear-gradient(to right, yellow 50%, orange 50%);"></div> <div style="display: flex; justify-content: space-between; width: 100%;"> 50% 50% </div> </div>
3	F	2	<div> <div style="width: 100%; height: 10px; background: linear-gradient(to right, yellow 100%);"></div> <div style="display: flex; justify-content: space-between; width: 100%;"> 100% </div> </div>
3	G	2	<div> <div style="width: 100%; height: 10px; background: linear-gradient(to right, yellow 50%, green 50%);"></div> <div style="display: flex; justify-content: space-between; width: 100%;"> 50% 50% </div> </div>

Continued on next page...

Continued from previous page...

Mol	Chain	Length	Quality of chain
4	E	7	 A horizontal bar chart showing the quality of chain 4E. The bar is divided into two segments: a green segment on the left representing 29% and a yellow segment on the right representing 71%. The percentages are labeled below the bar.

2 Entry composition [i](#)

There are 9 unique types of molecules in this entry. The entry contains 2905 atoms, of which 0 are hydrogens and 0 are deuteriums.

In the tables below, the ZeroOcc column contains the number of atoms modelled with zero occupancy, the AltConf column contains the number of residues with at least one atom in alternate conformation and the Trace column contains the number of residues modelled with at most 2 atoms.

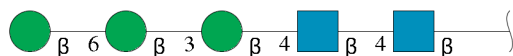
- Molecule 1 is a protein called E(rns) glycoprotein.

Mol	Chain	Residues	Atoms					ZeroOcc	AltConf	Trace
1	A	159	Total	C	N	O	S	0	1	0
			1274	791	233	238	12			
1	B	158	Total	C	N	O	S	0	0	0
			1258	781	230	235	12			

There are 6 discrepancies between the modelled and reference sequences:

Chain	Residue	Modelled	Actual	Comment	Reference
A	1	ARG	-	expression tag	UNP Q96662
A	2	SER	-	expression tag	UNP Q96662
A	32	LYS	HIS	engineered mutation	UNP Q96662
B	1	ARG	-	expression tag	UNP Q96662
B	2	SER	-	expression tag	UNP Q96662
B	32	LYS	HIS	engineered mutation	UNP Q96662

- Molecule 2 is an oligosaccharide called beta-D-mannopyranose-(1-6)-beta-D-mannopyranose-(1-3)-beta-D-mannopyranose-(1-4)-2-acetamido-2-deoxy-beta-D-glucopyranose-(1-4)-2-acetamido-2-deoxy-beta-D-glucopyranose.



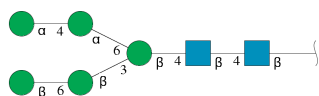
Mol	Chain	Residues	Atoms				ZeroOcc	AltConf	Trace
2	C	5	Total	C	N	O	0	0	0
			61	34	2	25			

- Molecule 3 is an oligosaccharide called 2-acetamido-2-deoxy-beta-D-glucopyranose-(1-4)-2-acetamido-2-deoxy-beta-D-glucopyranose.



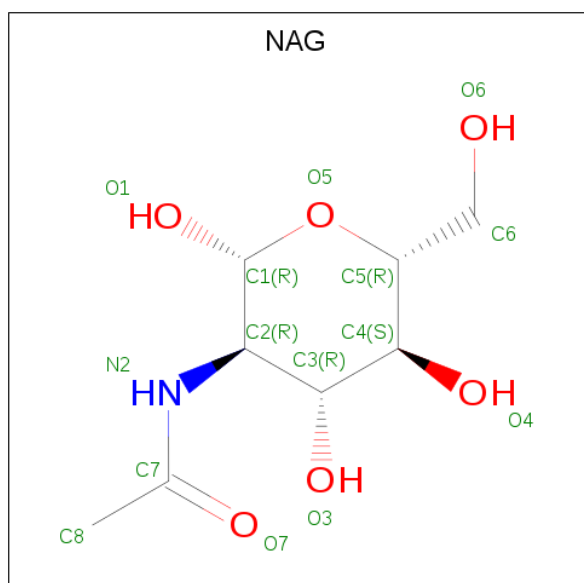
Mol	Chain	Residues	Atoms				ZeroOcc	AltConf	Trace
3	D	2	Total	C	N	O	0	0	0
			28	16	2	10			
3	F	2	Total	C	N	O	0	0	0
			28	16	2	10			
3	G	2	Total	C	N	O	0	0	0
			28	16	2	10			

- Molecule 4 is an oligosaccharide called beta-D-mannopyranose-(1-6)-beta-D-mannopyranose-(1-3)-[alpha-D-mannopyranose-(1-4)-alpha-D-mannopyranose-(1-6)]beta-D-mannopyranose-(1-4)-2-acetamido-2-deoxy-beta-D-glucopyranose-(1-4)-2-acetamido-2-deoxy-beta-D-glucopyranose.



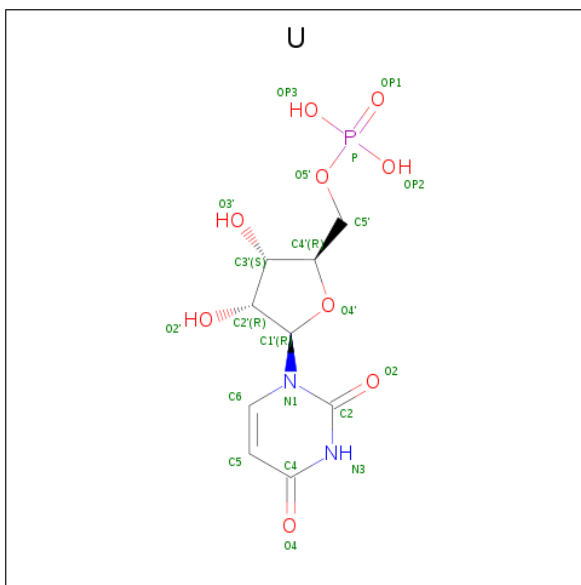
Mol	Chain	Residues	Atoms				ZeroOcc	AltConf	Trace
4	E	7	Total	C	N	O	0	0	0
			83	46	2	35			

- Molecule 5 is 2-acetamido-2-deoxy-beta-D-glucopyranose (three-letter code: NAG) (formula: C₈H₁₅NO₆).



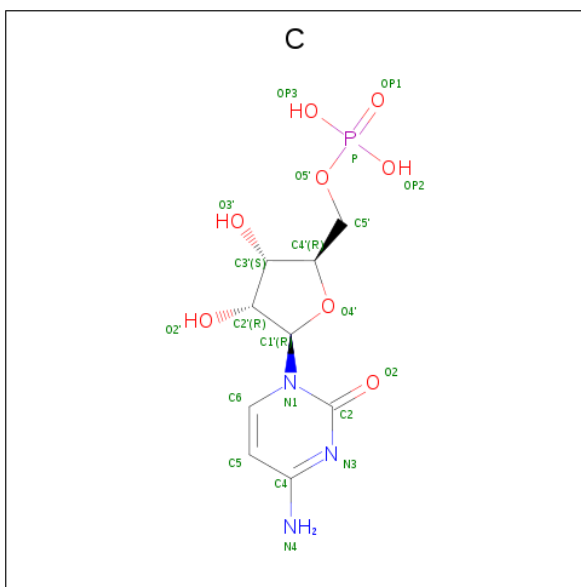
Mol	Chain	Residues	Atoms				ZeroOcc	AltConf
5	A	1	Total	C	N	O	0	0
			14	8	1	5		
5	A	1	Total	C	N	O	0	0
			14	8	1	5		

- Molecule 6 is URIDINE-5'-MONOPHOSPHATE (three-letter code: U) (formula: $C_9H_{13}N_2O_9P$).



Mol	Chain	Residues	Atoms					ZeroOcc	AltConf
6	A	1	Total	C	N	O	P	0	0
			20	9	2	8	1		
6	B	1	Total	C	N	O	P	0	0
			20	9	2	8	1		

- Molecule 7 is CYTIDINE-5'-MONOPHOSPHATE (three-letter code: C) (formula: $C_9H_{14}N_3O_8P$).



Mol	Chain	Residues	Atoms				ZeroOcc	AltConf
7	A	1	Total	C	N	O	0	0
			17	9	3	5		
7	B	1	Total	C	N	O	0	0
			17	9	3	5		

- Molecule 8 is SULFATE ION (three-letter code: SO4) (formula: O₄S).



Mol	Chain	Residues	Atoms			ZeroOcc	AltConf
8	A	1	Total	O	S	0	0
			5	4	1		
8	A	1	Total	O	S	0	0
			5	4	1		

Continued on next page...

Continued from previous page...

Mol	Chain	Residues	Atoms			ZeroOcc	AltConf
8	A	1	Total	O	S	0	0
			5	4	1		
8	B	1	Total	O	S	0	0
			5	4	1		
8	B	1	Total	O	S	0	0
			5	4	1		

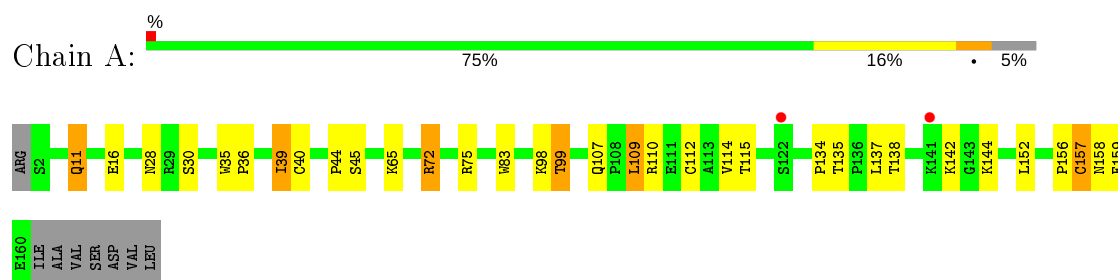
- Molecule 9 is water.

Mol	Chain	Residues	Atoms		ZeroOcc	AltConf
9	A	11	Total	O	0	0
			11	11		
9	B	7	Total	O	0	0
			7	7		

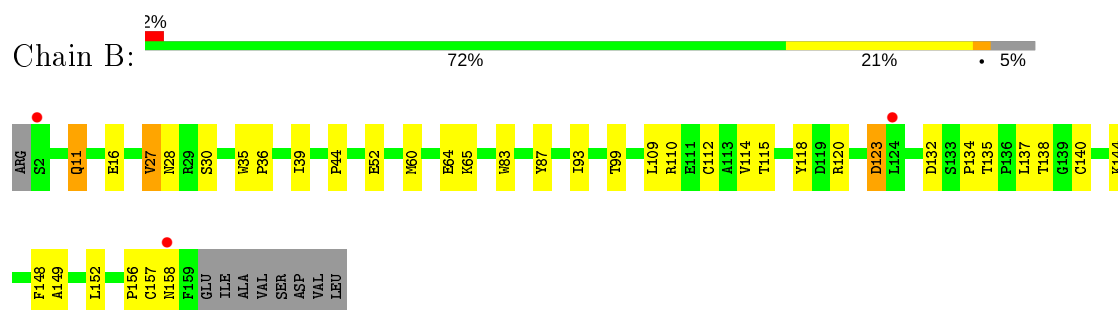
3 Residue-property plots [i](#)

These plots are drawn for all protein, RNA, DNA and oligosaccharide chains in the entry. The first graphic for a chain summarises the proportions of the various outlier classes displayed in the second graphic. The second graphic shows the sequence view annotated by issues in geometry and electron density. Residues are color-coded according to the number of geometric quality criteria for which they contain at least one outlier: green = 0, yellow = 1, orange = 2 and red = 3 or more. A red dot above a residue indicates a poor fit to the electron density ($RSRZ > 2$). Stretches of 2 or more consecutive residues without any outlier are shown as a green connector. Residues present in the sample, but not in the model, are shown in grey.

- Molecule 1: E(rns) glycoprotein



- Molecule 1: E(rns) glycoprotein



- Molecule 2: beta-D-mannopyranose-(1-6)-beta-D-mannopyranose-(1-3)-beta-D-mannopyranose-(1-4)-2-acetamido-2-deoxy-beta-D-glucopyranose-(1-4)-2-acetamido-2-deoxy-beta-D-glucopyranose



- Molecule 3: 2-acetamido-2-deoxy-beta-D-glucopyranose-(1-4)-2-acetamido-2-deoxy-beta-D-glucopyranose



- Molecule 3: 2-acetamido-2-deoxy-beta-D-glucopyranose-(1-4)-2-acetamido-2-deoxy-beta-D-glucopyranose

Chain F:  100%

MAG1
MAG2

- Molecule 3: 2-acetamido-2-deoxy-beta-D-glucopyranose-(1-4)-2-acetamido-2-deoxy-beta-D-glucopyranose

Chain G:  50% 50%

MAG1
MAG2

- Molecule 4: beta-D-mannopyranose-(1-6)-beta-D-mannopyranose-(1-3)-[alpha-D-mannopyranose-(1-4)-alpha-D-mannopyranose-(1-6)]beta-D-mannopyranose-(1-4)-2-acetamido-2-deoxy-beta-D-glucopyranose-(1-4)-2-acetamido-2-deoxy-beta-D-glucopyranose

Chain E:  29% 71%

MAG1
MAG2
BMA3
BMA4
BMA5
MAG6
MAG7

4 Data and refinement statistics

Property	Value	Source
Space group	P 65 2 2	Depositor
Cell constants a, b, c, α , β , γ	105.90 Å 105.90 Å 211.79 Å 90.00° 90.00° 120.00°	Depositor
Resolution (Å)	45.85 – 3.08 45.85 – 3.08	Depositor EDS
% Data completeness (in resolution range)	84.9 (45.85-3.08) 84.8 (45.85-3.08)	Depositor EDS
R_{merge}	(Not available)	Depositor
R_{sym}	(Not available)	Depositor
$\langle I/\sigma(I) \rangle$ ¹	1.26 (at 3.06 Å)	Xtriage
Refinement program	BUSTER-TNT, BUSTER 2.9.2	Depositor
R, R_{free}	0.197 , 0.245 0.212 , 0.250	Depositor DCC
R_{free} test set	572 reflections (4.93%)	wwPDB-VP
Wilson B-factor (Å ²)	75.3	Xtriage
Anisotropy	0.515	Xtriage
Bulk solvent k_{sol} (e/Å ³), B_{sol} (Å ²)	0.35 , 90.8	EDS
L-test for twinning ²	$\langle L \rangle = 0.49$, $\langle L^2 \rangle = 0.32$	Xtriage
Estimated twinning fraction	No twinning to report.	Xtriage
F_o, F_c correlation	0.92	EDS
Total number of atoms	2905	wwPDB-VP
Average B, all atoms (Å ²)	78.0	wwPDB-VP

Xtriage's analysis on translational NCS is as follows: *The largest off-origin peak in the Patterson function is 7.83% of the height of the origin peak. No significant pseudotranslation is detected.*

¹Intensities estimated from amplitudes.

²Theoretical values of $\langle |L| \rangle$, $\langle L^2 \rangle$ for acentric reflections are 0.5, 0.333 respectively for untwinned datasets, and 0.375, 0.2 for perfectly twinned datasets.

5 Model quality

5.1 Standard geometry

Bond lengths and bond angles in the following residue types are not validated in this section: SO4, BMA, NAG, MAN

The Z score for a bond length (or angle) is the number of standard deviations the observed value is removed from the expected value. A bond length (or angle) with $|Z| > 5$ is considered an outlier worth inspection. RMSZ is the root-mean-square of all Z scores of the bond lengths (or angles).

Mol	Chain	Bond lengths		Bond angles	
		RMSZ	# Z >5	RMSZ	# Z >5
1	A	0.59	0/1307	0.78	0/1771
1	B	0.54	0/1287	0.76	0/1744
All	All	0.57	0/2594	0.77	0/3515

There are no bond length outliers.

There are no bond angle outliers.

There are no chirality outliers.

There are no planarity outliers.

5.2 Too-close contacts

In the following table, the Non-H and H(model) columns list the number of non-hydrogen atoms and hydrogen atoms in the chain respectively. The H(added) column lists the number of hydrogen atoms added and optimized by MolProbity. The Clashes column lists the number of clashes within the asymmetric unit, whereas Symm-Clashes lists symmetry related clashes.

Mol	Chain	Non-H	H(model)	H(added)	Clashes	Symm-Clashes
1	A	1274	0	1218	18	0
1	B	1258	0	1206	16	0
2	C	61	0	52	0	0
3	D	28	0	25	2	0
3	F	28	0	25	0	0
3	G	28	0	25	0	0
4	E	83	0	70	0	0
5	A	28	0	26	0	0
6	A	20	0	11	0	0
6	B	20	0	11	0	0
7	A	17	0	12	0	0

Continued on next page...

Continued from previous page...

Mol	Chain	Non-H	H(model)	H(added)	Clashes	Symm-Clashes
7	B	17	0	12	2	0
8	A	15	0	0	2	0
8	B	10	0	0	0	0
9	A	11	0	0	0	0
9	B	7	0	0	0	0
All	All	2905	0	2693	34	0

The all-atom clashscore is defined as the number of clashes found per 1000 atoms (including hydrogen atoms). The all-atom clashscore for this structure is 6.

All (34) close contacts within the same asymmetric unit are listed below, sorted by their clash magnitude.

Atom-1	Atom-2	Interatomic distance (Å)	Clash overlap (Å)
1:A:110:ARG:HB3	1:A:159:PHE:CE2	2.24	0.73
1:A:72:ARG:NH1	8:A:1113:SO4:O3	2.28	0.66
1:A:45:SER:HG	1:A:83:TRP:HE3	1.46	0.62
1:A:114:VAL:HG22	1:A:135:THR:HG21	1.83	0.59
1:A:115:THR:HG22	1:A:138:THR:HB	1.88	0.56
1:B:115:THR:HG22	1:B:138:THR:HB	1.89	0.55
1:A:98:LYS:HB3	3:D:1:NAG:H82	1.88	0.54
1:B:114:VAL:HG22	1:B:135:THR:HG21	1.90	0.53
1:B:44:PRO:HA	1:B:83:TRP:CD2	2.44	0.53
1:A:75:ARG:NH2	8:A:1112:SO4:O2	2.42	0.52
1:A:99:THR:HG23	3:D:1:NAG:H81	1.92	0.51
1:A:157:CYS:SG	1:A:159:PHE:CE2	3.05	0.50
1:B:11:GLN:HG2	1:B:28:ASN:HA	1.95	0.48
1:B:137:LEU:HD11	1:B:156:PRO:HB3	1.95	0.48
1:B:65:LYS:HE3	7:B:213:C:H41	1.78	0.48
1:A:39:ILE:HD12	1:A:40:CYS:N	2.29	0.47
1:A:11:GLN:HG2	1:A:28:ASN:HA	1.96	0.47
1:B:112:CYS:SG	1:B:134:PRO:HA	2.55	0.46
1:A:44:PRO:HA	1:A:83:TRP:CD2	2.51	0.45
1:B:137:LEU:HB3	1:B:140:CYS:SG	2.57	0.45
1:A:72:ARG:HA	1:A:72:ARG:HH21	1.82	0.44
1:A:35:TRP:HA	1:A:36:PRO:HD3	1.89	0.44
1:A:112:CYS:SG	1:A:134:PRO:HA	2.59	0.43
1:A:137:LEU:HD11	1:A:156:PRO:HB3	2.01	0.42
1:B:123:ASP:HB3	1:B:144:LYS:NZ	2.35	0.42
1:A:45:SER:OG	1:A:83:TRP:HE3	2.02	0.42
1:B:52:GLU:O	1:B:93:ILE:HD12	2.20	0.41
1:B:118:TYR:HE1	1:B:120:ARG:HA	1.86	0.41

Continued on next page...

Continued from previous page...

Atom-1	Atom-2	Interatomic distance (Å)	Clash overlap (Å)
1:B:27:VAL:HG11	1:B:60:MET:SD	2.61	0.41
1:A:114:VAL:HG12	1:A:115:THR:HG23	2.03	0.41
1:B:64:GLU:HB3	7:B:213:C:H42	1.86	0.40
1:B:148:PHE:HZ	1:B:156:PRO:O	2.04	0.40
1:B:110:ARG:O	1:B:132:ASP:HA	2.21	0.40
1:B:35:TRP:HA	1:B:36:PRO:HD3	1.88	0.40

There are no symmetry-related clashes.

5.3 Torsion angles [i](#)

5.3.1 Protein backbone [i](#)

In the following table, the Percentiles column shows the percent Ramachandran outliers of the chain as a percentile score with respect to all X-ray entries followed by that with respect to entries of similar resolution.

The Analysed column shows the number of residues for which the backbone conformation was analysed, and the total number of residues.

Mol	Chain	Analysed	Favoured	Allowed	Outliers	Percentiles	
1	A	158/167 (95%)	147 (93%)	10 (6%)	1 (1%)	25	57
1	B	156/167 (93%)	143 (92%)	11 (7%)	2 (1%)	12	40
All	All	314/334 (94%)	290 (92%)	21 (7%)	3 (1%)	15	47

All (3) Ramachandran outliers are listed below:

Mol	Chain	Res	Type
1	B	149	ALA
1	A	109	LEU
1	B	87	TYR

5.3.2 Protein sidechains [i](#)

In the following table, the Percentiles column shows the percent sidechain outliers of the chain as a percentile score with respect to all X-ray entries followed by that with respect to entries of similar resolution.

The Analysed column shows the number of residues for which the sidechain conformation was analysed, and the total number of residues.

Mol	Chain	Analysed	Rotameric	Outliers	Percentiles	
1	A	140/146 (96%)	126 (90%)	14 (10%)	7	27
1	B	138/146 (94%)	127 (92%)	11 (8%)	12	38
All	All	278/292 (95%)	253 (91%)	25 (9%)	9	32

All (25) residues with a non-rotameric sidechain are listed below:

Mol	Chain	Res	Type
1	A	11	GLN
1	A	16	GLU
1	A	30	SER
1	A	39	ILE
1	A	65	LYS
1	A	72	ARG
1	A	99	THR
1	A	107	GLN
1	A	109	LEU
1	A	142	LYS
1	A	144	LYS
1	A	152	LEU
1	A	157	CYS
1	A	158	ASN
1	B	11	GLN
1	B	16	GLU
1	B	27	VAL
1	B	30	SER
1	B	39	ILE
1	B	99	THR
1	B	109	LEU
1	B	123	ASP
1	B	152	LEU
1	B	157	CYS
1	B	158	ASN

Some sidechains can be flipped to improve hydrogen bonding and reduce clashes. There are no such sidechains identified.

5.3.3 RNA ⓘ

There are no RNA molecules in this entry.

5.4 Non-standard residues in protein, DNA, RNA chains ⓘ

There are no non-standard protein/DNA/RNA residues in this entry.

5.5 Carbohydrates ⓘ

18 monosaccharides are modelled in this entry.

In the following table, the Counts columns list the number of bonds (or angles) for which Mogul statistics could be retrieved, the number of bonds (or angles) that are observed in the model and the number of bonds (or angles) that are defined in the Chemical Component Dictionary. The Link column lists molecule types, if any, to which the group is linked. The Z score for a bond length (or angle) is the number of standard deviations the observed value is removed from the expected value. A bond length (or angle) with $|Z| > 2$ is considered an outlier worth inspection. RMSZ is the root-mean-square of all Z scores of the bond lengths (or angles).

Mol	Type	Chain	Res	Link	Bond lengths			Bond angles		
					Counts	RMSZ	$\# Z > 2$	Counts	RMSZ	$\# Z > 2$
2	NAG	C	1	1,2	14,14,15	0.34	0	17,19,21	1.24	2 (11%)
2	NAG	C	2	2	14,14,15	0.43	0	17,19,21	1.07	1 (5%)
2	BMA	C	3	2	11,11,12	0.40	0	15,15,17	0.59	0
2	BMA	C	4	2	11,11,12	0.51	0	15,15,17	1.27	2 (13%)
2	BMA	C	5	2	11,11,12	0.42	0	15,15,17	1.38	2 (13%)
3	NAG	D	1	1,3	14,14,15	0.29	0	17,19,21	0.83	1 (5%)
3	NAG	D	2	3	14,14,15	0.30	0	17,19,21	0.87	1 (5%)
4	NAG	E	1	1,4	14,14,15	0.32	0	17,19,21	0.93	1 (5%)
4	NAG	E	2	4	14,14,15	0.36	0	17,19,21	1.12	1 (5%)
4	BMA	E	3	4	11,11,12	0.29	0	15,15,17	0.57	0
4	BMA	E	4	4	11,11,12	0.45	0	15,15,17	1.30	2 (13%)
4	BMA	E	5	4	11,11,12	0.49	0	15,15,17	0.86	1 (6%)
4	MAN	E	6	4	11,11,12	0.43	0	15,15,17	0.96	1 (6%)
4	MAN	E	7	4	11,11,12	0.31	0	15,15,17	0.89	0
3	NAG	F	1	1,3	14,14,15	0.25	0	17,19,21	2.84	4 (23%)
3	NAG	F	2	3	14,14,15	0.24	0	17,19,21	0.91	1 (5%)
3	NAG	G	1	1,3	14,14,15	0.31	0	17,19,21	0.82	0
3	NAG	G	2	3	14,14,15	0.30	0	17,19,21	0.71	1 (5%)

In the following table, the Chirals column lists the number of chiral outliers, the number of chiral centers analysed, the number of these observed in the model and the number defined in the Chemical Component Dictionary. Similar counts are reported in the Torsion and Rings columns. '-' means no outliers of that kind were identified.

Mol	Type	Chain	Res	Link	Chirals	Torsions	Rings
2	NAG	C	1	1,2	-	2/6/23/26	0/1/1/1
2	NAG	C	2	2	-	0/6/23/26	0/1/1/1
2	BMA	C	3	2	-	0/2/19/22	0/1/1/1
2	BMA	C	4	2	-	2/2/19/22	1/1/1/1
2	BMA	C	5	2	-	0/2/19/22	0/1/1/1
3	NAG	D	1	1,3	-	0/6/23/26	0/1/1/1
3	NAG	D	2	3	-	2/6/23/26	0/1/1/1
4	NAG	E	1	1,4	-	0/6/23/26	0/1/1/1
4	NAG	E	2	4	-	0/6/23/26	0/1/1/1
4	BMA	E	3	4	-	2/2/19/22	0/1/1/1
4	BMA	E	4	4	-	2/2/19/22	0/1/1/1
4	BMA	E	5	4	-	0/2/19/22	0/1/1/1
4	MAN	E	6	4	-	1/2/19/22	0/1/1/1
4	MAN	E	7	4	-	1/2/19/22	0/1/1/1
3	NAG	F	1	1,3	-	1/6/23/26	0/1/1/1
3	NAG	F	2	3	-	0/6/23/26	0/1/1/1
3	NAG	G	1	1,3	-	2/6/23/26	0/1/1/1
3	NAG	G	2	3	-	0/6/23/26	0/1/1/1

There are no bond length outliers.

All (21) bond angle outliers are listed below:

Mol	Chain	Res	Type	Atoms	Z	Observed(°)	Ideal(°)
3	F	1	NAG	C1-C2-N2	8.18	124.45	110.49
3	F	1	NAG	O5-C1-C2	-7.04	100.17	111.29
2	C	1	NAG	O5-C1-C2	-4.08	104.84	111.29
2	C	5	BMA	C1-O5-C5	3.66	117.15	112.19
4	E	4	BMA	C1-O5-C5	3.48	116.91	112.19
4	E	2	NAG	O5-C1-C2	-3.45	105.84	111.29
2	C	4	BMA	C1-O5-C5	3.43	116.83	112.19
3	F	1	NAG	C1-O5-C5	3.37	116.76	112.19
2	C	5	BMA	C1-C2-C3	3.33	113.76	109.67
2	C	2	NAG	O5-C1-C2	-2.96	106.62	111.29
2	C	4	BMA	C1-C2-C3	2.84	113.16	109.67
4	E	6	MAN	C1-O5-C5	2.71	115.87	112.19
3	F	2	NAG	C1-O5-C5	2.71	115.87	112.19
4	E	4	BMA	C1-C2-C3	2.65	112.92	109.67
4	E	5	BMA	C1-C2-C3	2.56	112.81	109.67
4	E	1	NAG	C1-C2-N2	2.33	114.46	110.49
2	C	1	NAG	C1-C2-N2	2.23	114.30	110.49
3	D	1	NAG	C1-O5-C5	2.21	115.18	112.19

Continued on next page...

Continued from previous page...

Mol	Chain	Res	Type	Atoms	Z	Observed(°)	Ideal(°)
3	F	1	NAG	C2-N2-C7	2.20	126.04	122.90
3	G	2	NAG	C1-C2-N2	-2.12	106.86	110.49
3	D	2	NAG	C1-C2-N2	-2.00	107.06	110.49

There are no chirality outliers.

All (15) torsion outliers are listed below:

Mol	Chain	Res	Type	Atoms
3	D	2	NAG	O5-C5-C6-O6
3	D	2	NAG	C4-C5-C6-O6
3	F	1	NAG	C1-C2-N2-C7
2	C	4	BMA	O5-C5-C6-O6
4	E	3	BMA	O5-C5-C6-O6
4	E	4	BMA	O5-C5-C6-O6
4	E	6	MAN	O5-C5-C6-O6
4	E	7	MAN	O5-C5-C6-O6
2	C	1	NAG	C4-C5-C6-O6
4	E	3	BMA	C4-C5-C6-O6
3	G	1	NAG	C4-C5-C6-O6
2	C	4	BMA	C4-C5-C6-O6
2	C	1	NAG	O5-C5-C6-O6
4	E	4	BMA	C4-C5-C6-O6
3	G	1	NAG	O5-C5-C6-O6

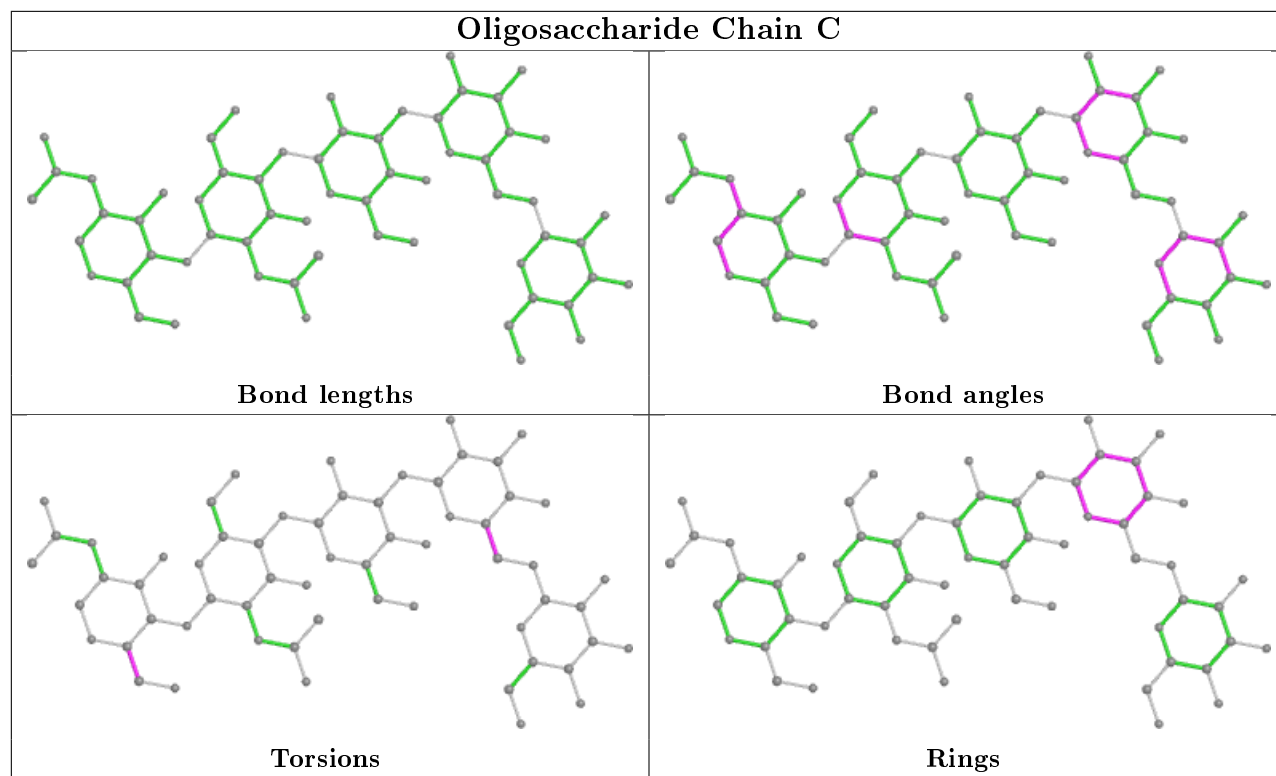
All (1) ring outliers are listed below:

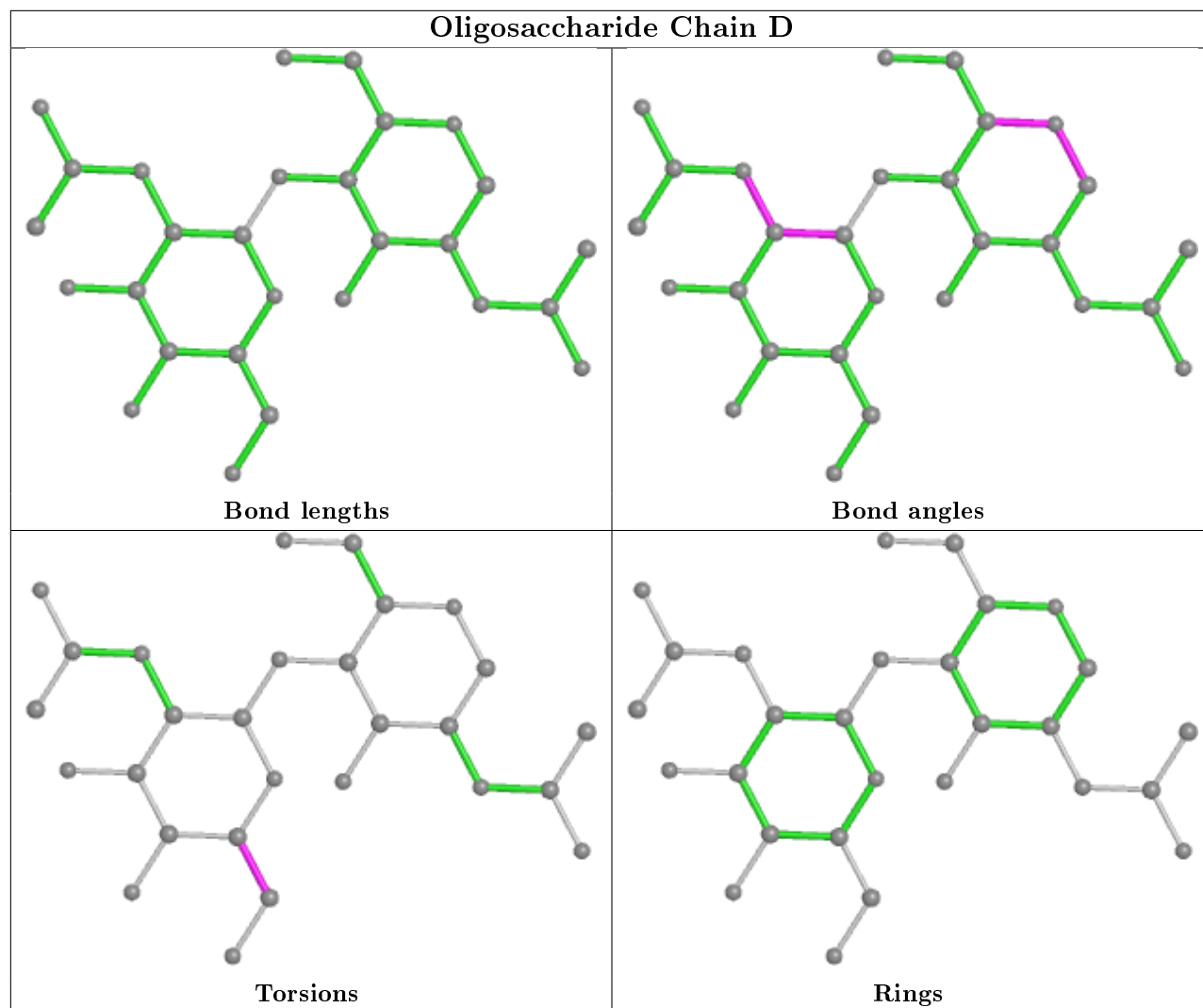
Mol	Chain	Res	Type	Atoms
2	C	4	BMA	C1-C2-C3-C4-C5-O5

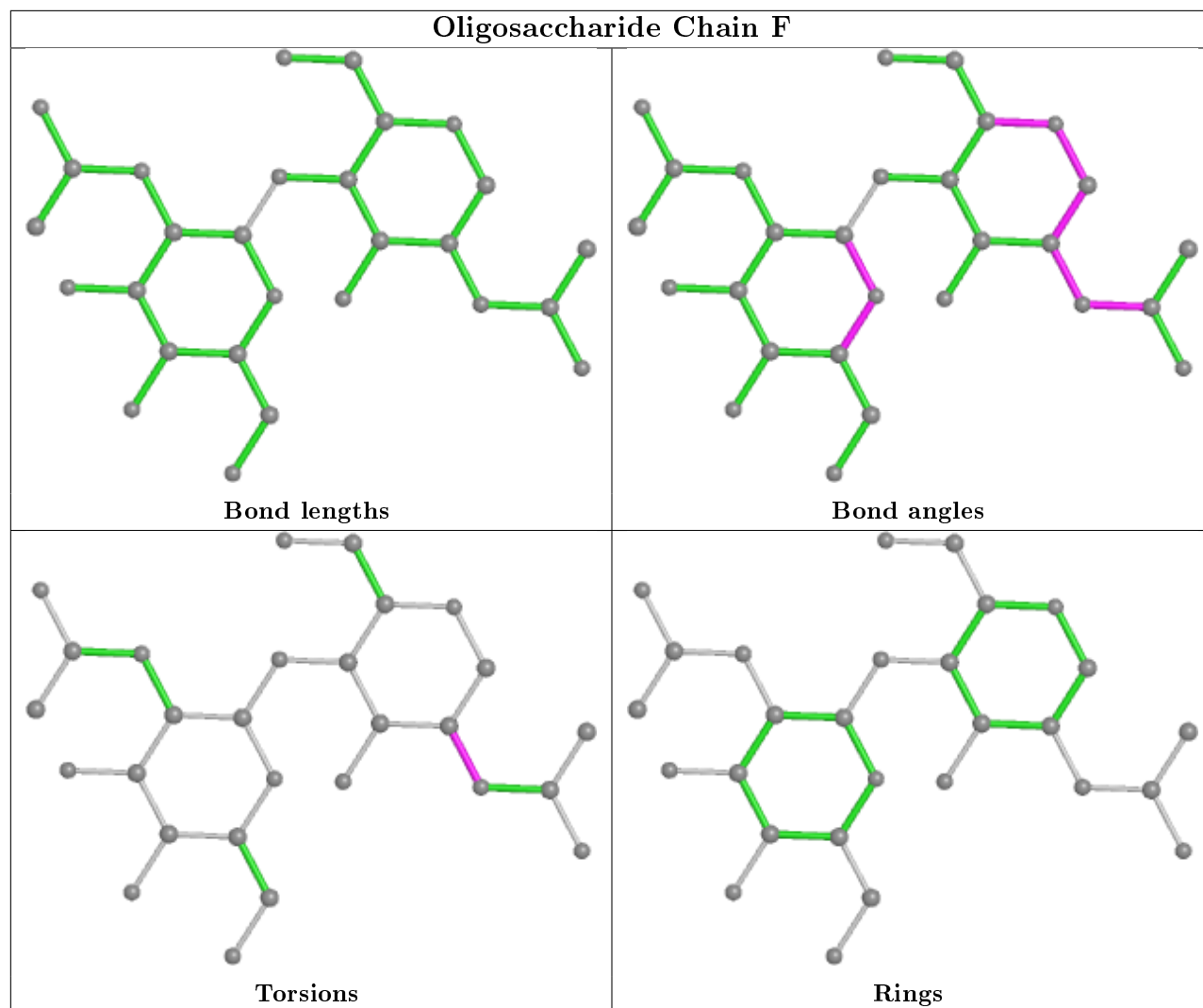
1 monomer is involved in 2 short contacts:

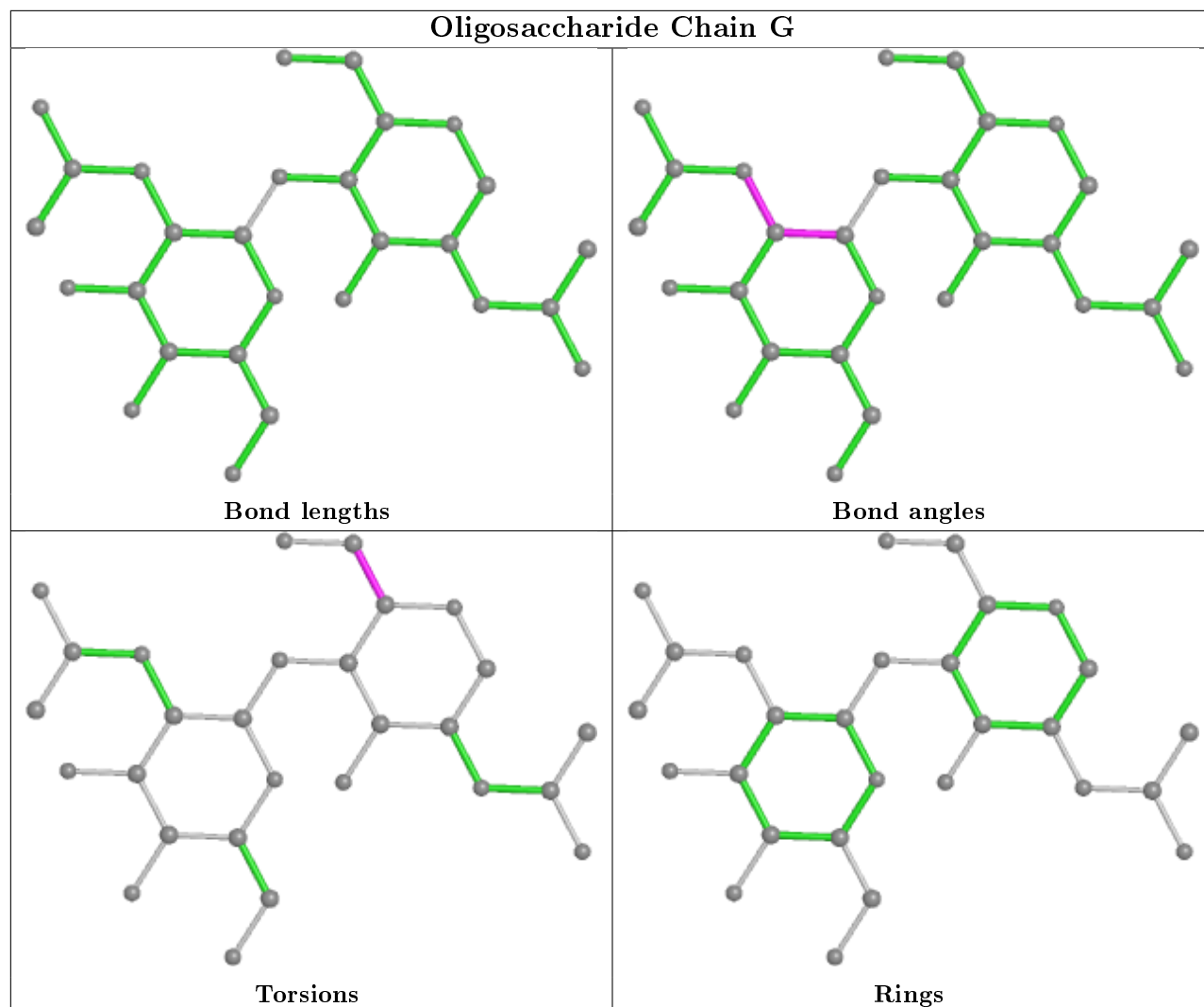
Mol	Chain	Res	Type	Clashes	Symm-Clashes
3	D	1	NAG	2	0

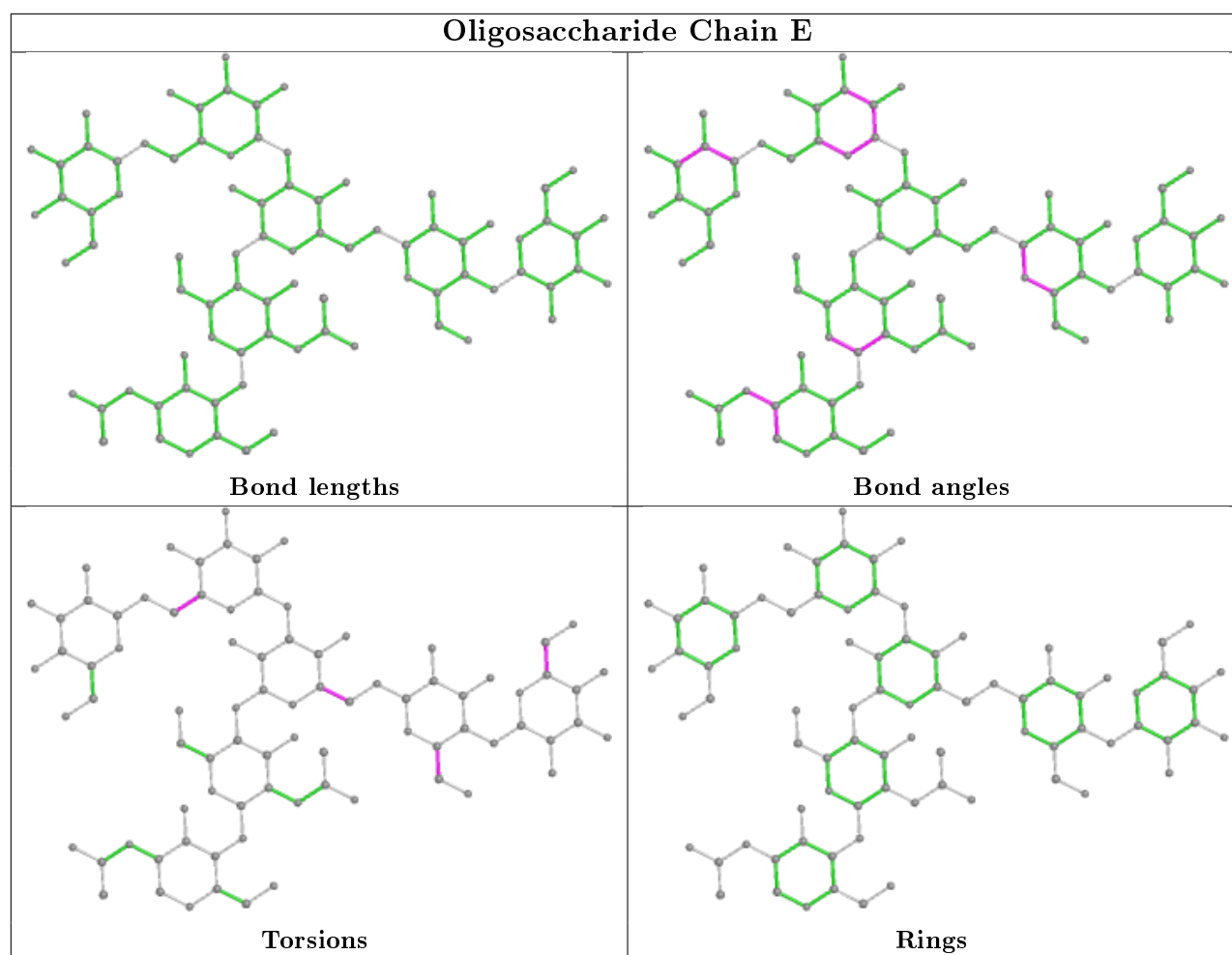
The following is a two-dimensional graphical depiction of Mogul quality analysis of bond lengths, bond angles, torsion angles, and ring geometry for oligosaccharide.











5.6 Ligand geometry [i](#)

11 ligands are modelled in this entry.

In the following table, the Counts columns list the number of bonds (or angles) for which Mogul statistics could be retrieved, the number of bonds (or angles) that are observed in the model and the number of bonds (or angles) that are defined in the Chemical Component Dictionary. The Link column lists molecule types, if any, to which the group is linked. The Z score for a bond length (or angle) is the number of standard deviations the observed value is removed from the expected value. A bond length (or angle) with $|Z| > 2$ is considered an outlier worth inspection. RMSZ is the root-mean-square of all Z scores of the bond lengths (or angles).

Mol	Type	Chain	Res	Link	Bond lengths			Bond angles		
					Counts	RMSZ	$\# Z > 2$	Counts	RMSZ	$\# Z > 2$
8	SO4	A	1113	-	4,4,4	0.98	0	6,6,6	1.18	1 (16%)
8	SO4	B	215	-	4,4,4	0.98	0	6,6,6	1.53	1 (16%)
5	NAG	A	1106	1	14,14,15	0.34	0	17,19,21	2.81	3 (17%)
8	SO4	A	1114	-	4,4,4	1.46	1 (25%)	6,6,6	1.05	0
8	SO4	B	214	-	4,4,4	1.10	0	6,6,6	1.55	2 (33%)

Mol	Type	Chain	Res	Link	Bond lengths			Bond angles		
					Counts	RMSZ	# Z > 2	Counts	RMSZ	# Z > 2
8	SO4	A	1112	-	4,4,4	0.73	0	6,6,6	1.68	1 (16%)
5	NAG	A	1107	1	14,14,15	0.53	0	17,19,21	1.93	3 (17%)

In the following table, the Chirals column lists the number of chiral outliers, the number of chiral centers analysed, the number of these observed in the model and the number defined in the Chemical Component Dictionary. Similar counts are reported in the Torsion and Rings columns. '-' means no outliers of that kind were identified.

Mol	Type	Chain	Res	Link	Chirals	Torsions	Rings
5	NAG	A	1107	1	-	0/6/23/26	0/1/1/1
5	NAG	A	1106	1	-	3/6/23/26	0/1/1/1

All (1) bond length outliers are listed below:

Mol	Chain	Res	Type	Atoms	Z	Observed(Å)	Ideal(Å)
8	A	1114	SO4	O2-S	2.23	1.58	1.46

All (11) bond angle outliers are listed below:

Mol	Chain	Res	Type	Atoms	Z	Observed(°)	Ideal(°)
5	A	1106	NAG	C1-C2-N2	8.35	124.75	110.49
5	A	1106	NAG	O5-C1-C2	-6.61	100.85	111.29
5	A	1107	NAG	O5-C1-C2	-5.88	102.01	111.29
8	B	215	SO4	O4-S-O3	3.48	123.90	109.06
8	A	1112	SO4	O4-S-O3	3.47	123.89	109.06
5	A	1106	NAG	C1-O5-C5	3.21	116.54	112.19
5	A	1107	NAG	C1-O5-C5	-3.11	107.98	112.19
8	B	214	SO4	O4-S-O3	2.98	121.77	109.06
5	A	1107	NAG	C1-C2-N2	-2.63	106.00	110.49
8	A	1113	SO4	O2-S-O1	-2.30	92.43	109.43
8	B	214	SO4	O3-S-O1	-2.21	97.76	109.31

There are no chirality outliers.

All (3) torsion outliers are listed below:

Mol	Chain	Res	Type	Atoms
5	A	1106	NAG	C4-C5-C6-O6
5	A	1106	NAG	O5-C5-C6-O6
5	A	1106	NAG	C1-C2-N2-C7

There are no ring outliers.

2 monomers are involved in 2 short contacts:

Mol	Chain	Res	Type	Clashes	Symm-Clashes
8	A	1113	SO4	1	0
8	A	1112	SO4	1	0

5.7 Other polymers [i](#)

There are no such residues in this entry.

5.8 Polymer linkage issues [i](#)

There are no chain breaks in this entry.

6 Fit of model and data [i](#)

6.1 Protein, DNA and RNA chains [i](#)

In the following table, the column labelled ‘#RSRZ> 2’ contains the number (and percentage) of RSRZ outliers, followed by percent RSRZ outliers for the chain as percentile scores relative to all X-ray entries and entries of similar resolution. The OWAB column contains the minimum, median, 95th percentile and maximum values of the occupancy-weighted average B-factor per residue. The column labelled ‘Q< 0.9’ lists the number of (and percentage) of residues with an average occupancy less than 0.9.

Mol	Chain	Analysed	<RSRZ>	#RSRZ>2	OWAB(Å ²)	Q<0.9
1	A	159/167 (95%)	-0.02	2 (1%) 77 58	44, 63, 102, 117	0
1	B	158/167 (94%)	0.13	3 (1%) 66 45	50, 81, 116, 134	0
All	All	317/334 (94%)	0.06	5 (1%) 72 51	44, 69, 112, 134	0

All (5) RSRZ outliers are listed below:

Mol	Chain	Res	Type	RSRZ
1	B	158	ASN	2.8
1	A	141	LYS	2.4
1	A	122	SER	2.3
1	B	124	LEU	2.2
1	B	2	SER	2.0

6.2 Non-standard residues in protein, DNA, RNA chains [i](#)

There are no non-standard protein/DNA/RNA residues in this entry.

6.3 Carbohydrates [i](#)

In the following table, the Atoms column lists the number of modelled atoms in the group and the number defined in the chemical component dictionary. The B-factors column lists the minimum, median, 95th percentile and maximum values of B factors of atoms in the group. The column labelled ‘Q< 0.9’ lists the number of atoms with occupancy less than 0.9.

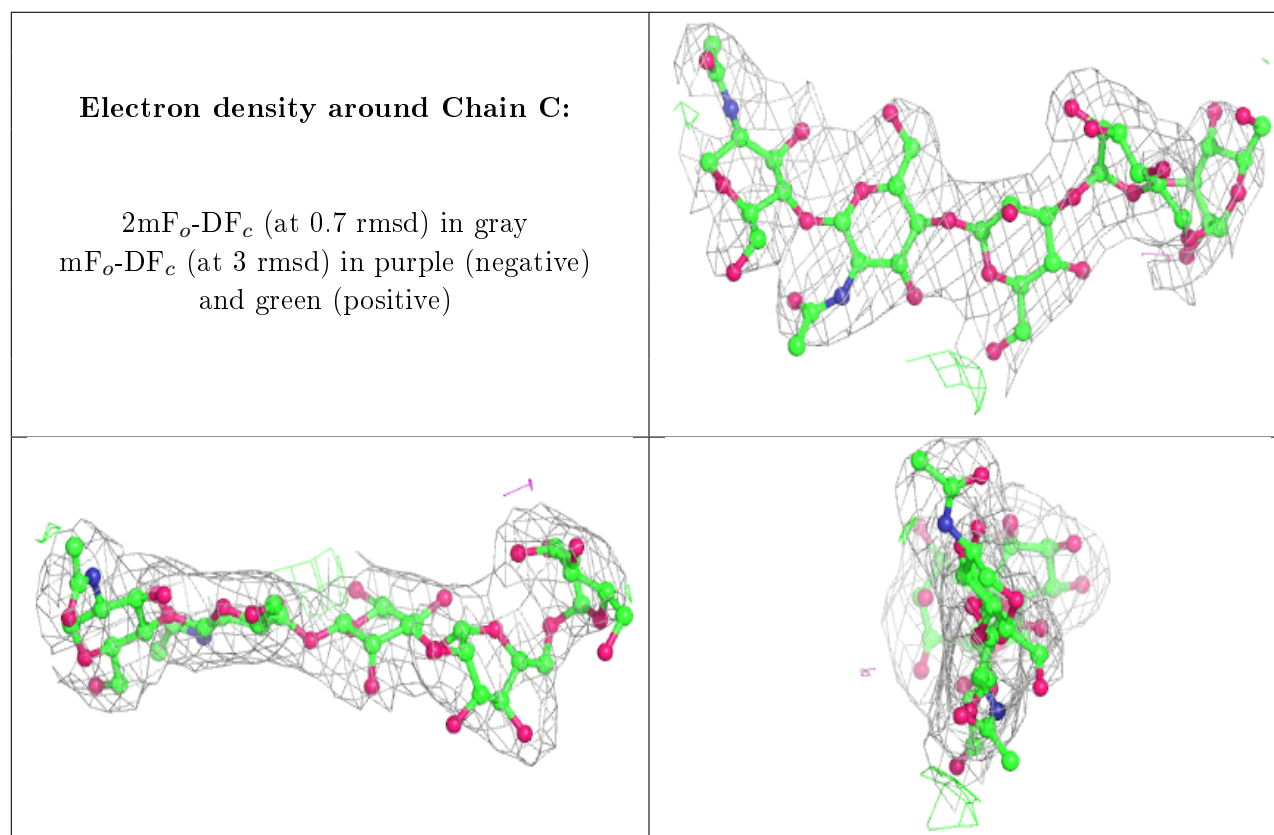
Mol	Type	Chain	Res	Atoms	RSCC	RSR	B-factors(Å ²)	Q<0.9
3	NAG	G	1	14/15	0.73	0.22	51,130,222,293	0
3	NAG	G	2	14/15	0.82	0.25	75,132,233,271	0
4	MAN	E	7	11/12	0.89	0.17	84,131,227,237	0
3	NAG	F	2	14/15	0.89	0.22	72,105,264,278	0

Continued on next page...

Continued from previous page...

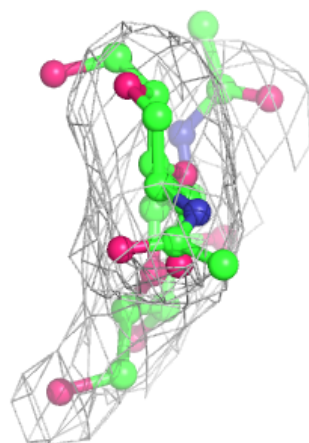
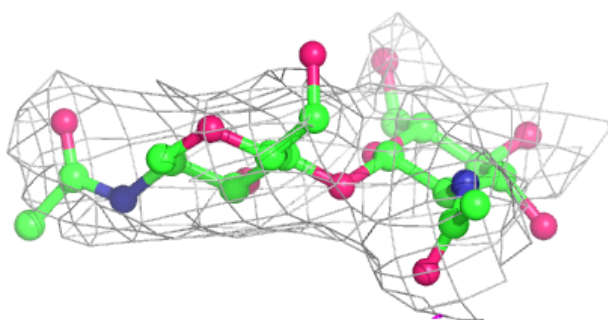
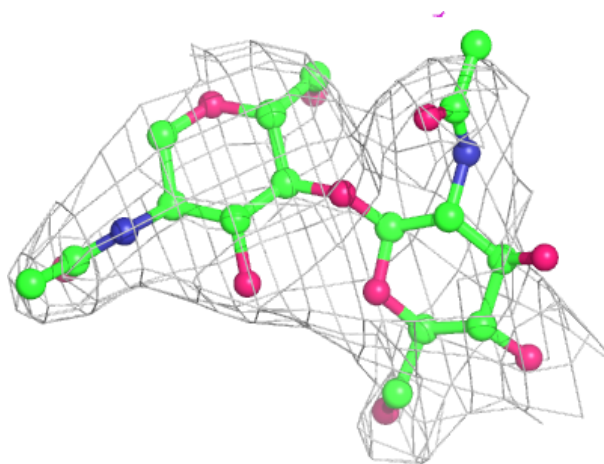
Mol	Type	Chain	Res	Atoms	RSCC	RSR	B-factors(\AA^2)	Q<0.9
2	BMA	C	5	11/12	0.92	0.35	41,117,222,248	0
2	BMA	C	3	11/12	0.92	0.23	47,68,169,172	0
4	BMA	E	5	11/12	0.92	0.16	60,116,250,285	0
3	NAG	D	2	14/15	0.92	0.18	70,104,220,266	0
4	BMA	E	4	11/12	0.94	0.19	55,105,152,167	0
3	NAG	D	1	14/15	0.95	0.20	62,97,181,182	0
2	BMA	C	4	11/12	0.96	0.18	45,73,164,234	0
2	NAG	C	2	14/15	0.96	0.29	28,56,150,211	0
4	MAN	E	6	11/12	0.96	0.14	47,73,267,276	0
2	NAG	C	1	14/15	0.96	0.14	21,47,108,147	0
3	NAG	F	1	14/15	0.96	0.17	30,93,206,211	0
4	BMA	E	3	11/12	0.97	0.16	48,73,107,125	0
4	NAG	E	2	14/15	0.97	0.17	25,80,110,133	0
4	NAG	E	1	14/15	0.97	0.17	45,75,121,150	0

The following is a graphical depiction of the model fit to experimental electron density for oligosaccharide. Each fit is shown from different orientation to approximate a three-dimensional view.



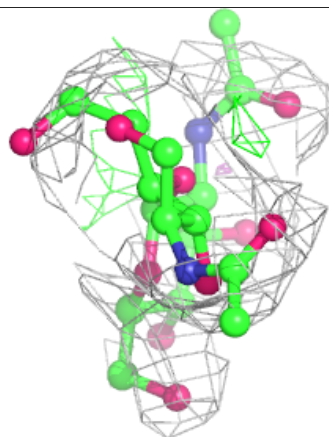
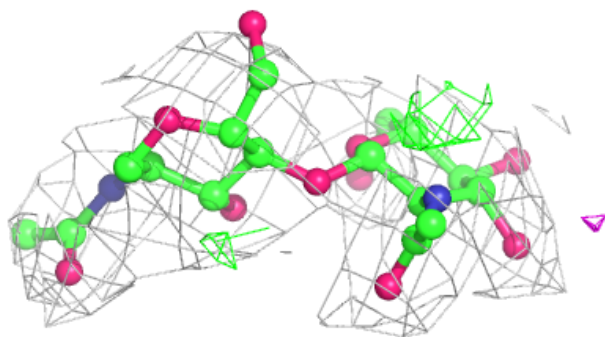
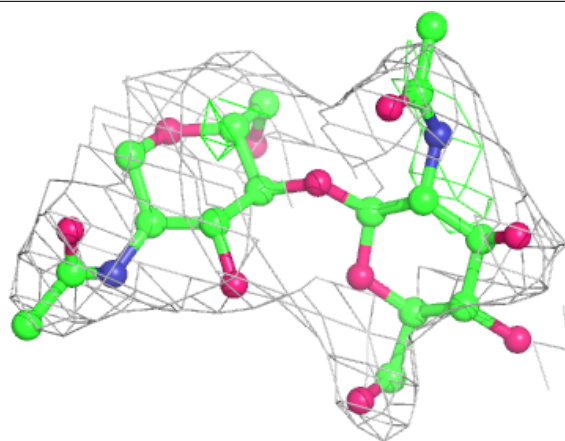
Electron density around Chain D:

$2mF_o-DF_c$ (at 0.7 rmsd) in gray
 mF_o-DF_c (at 3 rmsd) in purple (negative)
and green (positive)



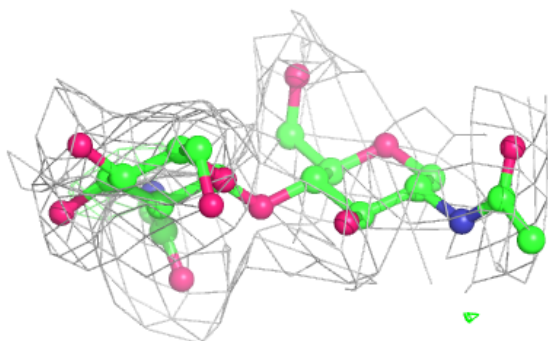
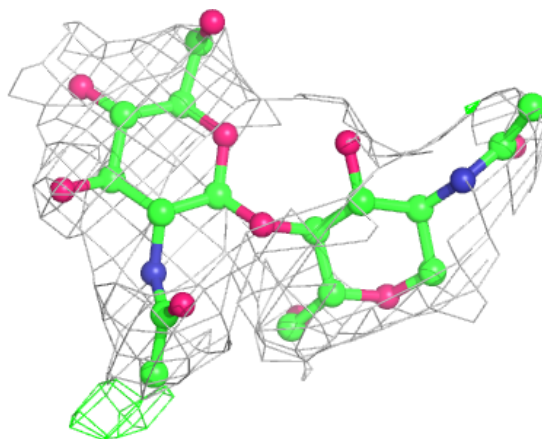
Electron density around Chain F:

$2mF_o - DF_c$ (at 0.7 rmsd) in gray
 $mF_o - DF_c$ (at 3 rmsd) in purple (negative)
and green (positive)

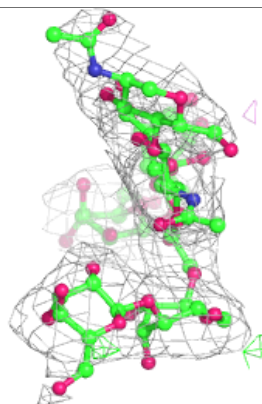
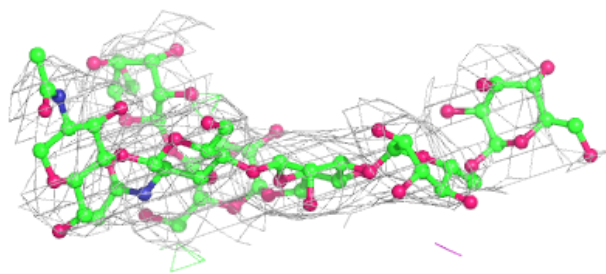
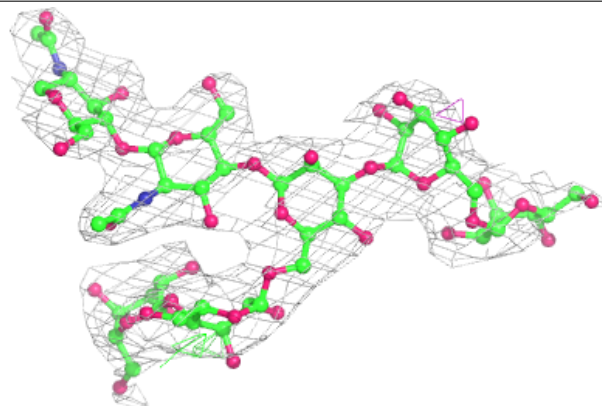


Electron density around Chain G:

$2mF_o-DF_c$ (at 0.7 rmsd) in gray
 mF_o-DF_c (at 3 rmsd) in purple (negative)
and green (positive)

**Electron density around Chain E:**

$2mF_o-DF_c$ (at 0.7 rmsd) in gray
 mF_o-DF_c (at 3 rmsd) in purple (negative)
and green (positive)



6.4 Ligands [i](#)

In the following table, the Atoms column lists the number of modelled atoms in the group and the number defined in the chemical component dictionary. The B-factors column lists the minimum, median, 95th percentile and maximum values of B factors of atoms in the group. The column labelled 'Q< 0.9' lists the number of atoms with occupancy less than 0.9.

Mol	Type	Chain	Res	Atoms	RSCC	RSR	B-factors(\AA^2)	Q<0.9
7	C	B	213	17/21	0.76	0.32	165,167,168,168	0
6	U	B	210	20/21	0.79	0.29	161,163,168,168	0
5	NAG	A	1107	14/15	0.84	0.23	34,71,139,156	0
5	NAG	A	1106	14/15	0.87	0.20	40,82,221,236	0
8	SO4	B	215	5/5	0.90	0.27	135,139,139,141	0
7	C	A	1111	17/21	0.96	0.17	65,67,69,70	0
6	U	A	1110	20/21	0.96	0.17	59,62,63,63	0
8	SO4	A	1114	5/5	0.98	0.22	73,76,77,80	0
8	SO4	B	214	5/5	0.98	0.20	77,80,81,83	0
8	SO4	A	1112	5/5	0.98	0.19	75,77,79,80	5
8	SO4	A	1113	5/5	0.99	0.17	56,58,61,62	0

6.5 Other polymers [i](#)

There are no such residues in this entry.