



wwPDB X-ray Structure Validation Summary Report ⓘ

Aug 20, 2020 – 12:23 PM BST

PDB ID : 4DXJ
Title : Crystal structure of Trypanosome cruzi farnesyl diphosphate synthase in complex with [2-(n-propylamino)ethane-1,1-diyl]bisphosphonic acid and Mg²⁺
Authors : Aripirala, S.; Amzel, L.M.; Gabelli, S.B.
Deposited on : 2012-02-27
Resolution : 2.35 Å(reported)

This is a wwPDB X-ray Structure Validation Summary Report for a publicly released PDB entry.

We welcome your comments at validation@mail.wwpdb.org

A user guide is available at

<https://www.wwpdb.org/validation/2017/XrayValidationReportHelp>

with specific help available everywhere you see the ⓘ symbol.

The following versions of software and data (see [references ⓘ](#)) were used in the production of this report:

MolProbity	:	4.02b-467
Mogul	:	1.8.5 (274361), CSD as541be (2020)
Xtriage (Phenix)	:	1.13
EDS	:	2.13.1
Percentile statistics	:	20191225.v01 (using entries in the PDB archive December 25th 2019)
Refmac	:	5.8.0158
CCP4	:	7.0.044 (Gargrove)
Ideal geometry (proteins)	:	Engh & Huber (2001)
Ideal geometry (DNA, RNA)	:	Parkinson et al. (1996)
Validation Pipeline (wwPDB-VP)	:	2.13.1

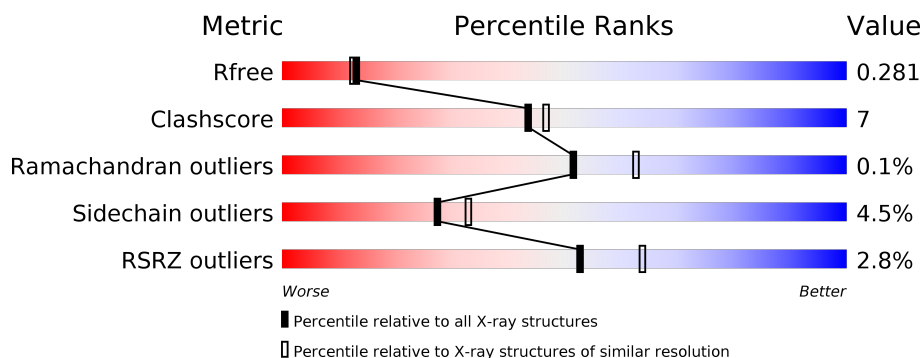
1 Overall quality at a glance

The following experimental techniques were used to determine the structure:

X-RAY DIFFRACTION

The reported resolution of this entry is 2.35 Å.

Percentile scores (ranging between 0-100) for global validation metrics of the entry are shown in the following graphic. The table shows the number of entries on which the scores are based.



Metric	Whole archive (#Entries)	Similar resolution (#Entries, resolution range(Å))
R_{free}	130704	1164 (2.36-2.36)
Clashscore	141614	1232 (2.36-2.36)
Ramachandran outliers	138981	1211 (2.36-2.36)
Sidechain outliers	138945	1212 (2.36-2.36)
RSRZ outliers	127900	1150 (2.36-2.36)

The table below summarises the geometric issues observed across the polymeric chains and their fit to the electron density. The red, orange, yellow and green segments on the lower bar indicate the fraction of residues that contain outliers for ≥ 3 , 2, 1 and 0 types of geometric quality criteria respectively. A grey segment represents the fraction of residues that are not modelled. The numeric value for each fraction is indicated below the corresponding segment, with a dot representing fractions $\leq 5\%$. The upper red bar (where present) indicates the fraction of residues that have poor fit to the electron density. The numeric value is given above the bar.

Mol	Chain	Length	Quality of chain
1	A	362	<div> <div>3%</div> <div> <div></div> <div>87%</div> <div>11%</div> </div> </div>
1	B	362	<div> <div>2%</div> <div> <div></div> <div>85%</div> <div>14%</div> </div> </div>
1	C	362	<div> <div>3%</div> <div> <div></div> <div>87%</div> <div>11%</div> </div> </div>

The following table lists non-polymeric compounds, carbohydrate monomers and non-standard residues in protein, DNA, RNA chains that are outliers for geometric or electron-density-fit criteria:

Mol	Type	Chain	Res	Chirality	Geometry	Clashes	Electron density
4	IPE	B	405	-	-	X	-
5	PEG	A	406	-	-	X	-
5	PEG	B	406	-	-	X	-
5	PEG	B	407	-	-	-	X
7	PGE	B	409	-	-	X	-

2 Entry composition

There are 9 unique types of molecules in this entry. The entry contains 9014 atoms, of which 0 are hydrogens and 0 are deuteriums.

In the tables below, the ZeroOcc column contains the number of atoms modelled with zero occupancy, the AltConf column contains the number of residues with at least one atom in alternate conformation and the Trace column contains the number of residues modelled with at most 2 atoms.

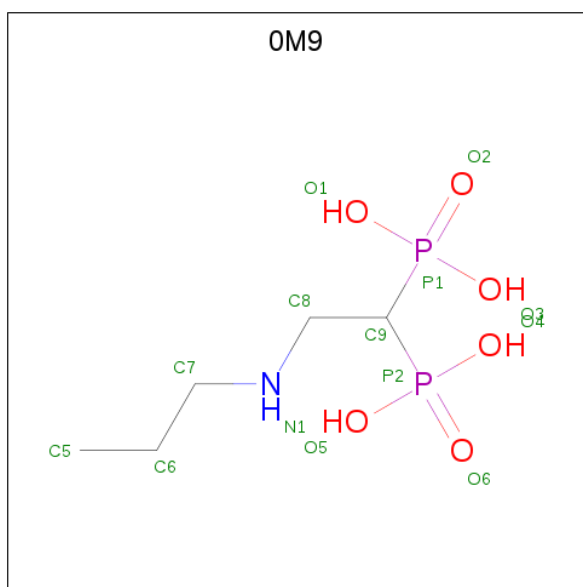
- Molecule 1 is a protein called Farnesyl pyrophosphate synthase.

Mol	Chain	Residues	Atoms					ZeroOcc	AltConf	Trace
1	A	362	Total	C	N	O	S	0	2	0
			2907	1866	477	541	23			
1	B	362	Total	C	N	O	S	0	2	0
			2903	1863	475	541	24			
1	C	362	Total	C	N	O	S	0	0	0
			2891	1857	473	538	23			

- Molecule 2 is MAGNESIUM ION (three-letter code: MG) (formula: Mg).

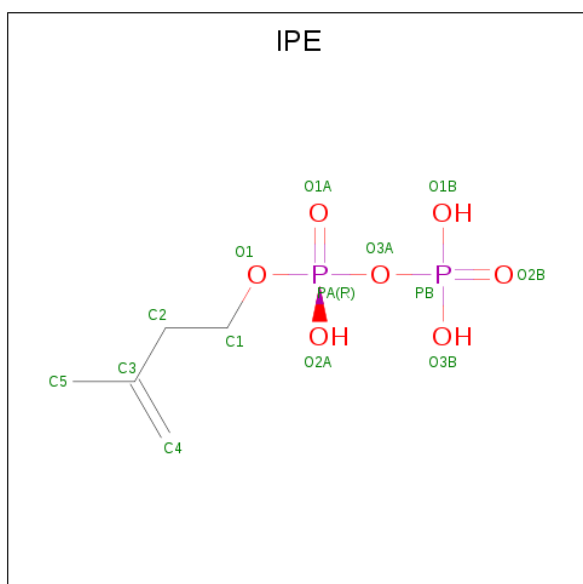
Mol	Chain	Residues	Atoms		ZeroOcc	AltConf
2	B	3	Total	Mg	0	0
			3	3		
2	A	3	Total	Mg	0	0
			3	3		
2	C	3	Total	Mg	0	0
			3	3		

- Molecule 3 is [2-(propylamino)ethane-1,1-diyl]bis(phosphonic acid) (three-letter code: 0M9) (formula: C₅H₁₅NO₆P₂).



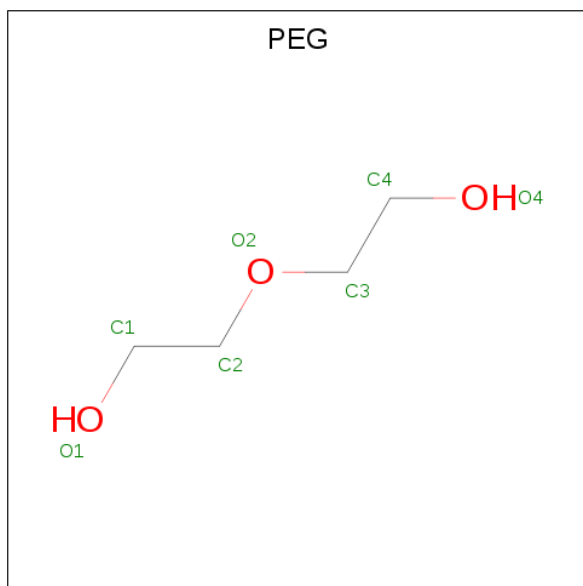
Mol	Chain	Residues	Atoms					ZeroOcc	AltConf
3	A	1	Total	C	N	O	P	0	0
			14	5	1	6	2		
3	B	1	Total	C	N	O	P	0	0
			14	5	1	6	2		
3	C	1	Total	C	N	O	P	0	0
			14	5	1	6	2		

- Molecule 4 is 3-METHYLBUT-3-ENYL TRIHYDROGEN DIPHOSPHATE (three-letter code: IPE) (formula: $C_5H_{12}O_7P_2$).



Mol	Chain	Residues	Atoms				ZeroOcc	AltConf
4	A	1	Total	C	O	P	0	0
			14	5	7	2		
4	B	1	Total	C	O	P	0	0
			14	5	7	2		
4	C	1	Total	C	O	P	0	0
			14	5	7	2		

- Molecule 5 is DI(HYDROXYETHYL)ETHER (three-letter code: PEG) (formula: C₄H₁₀O₃).



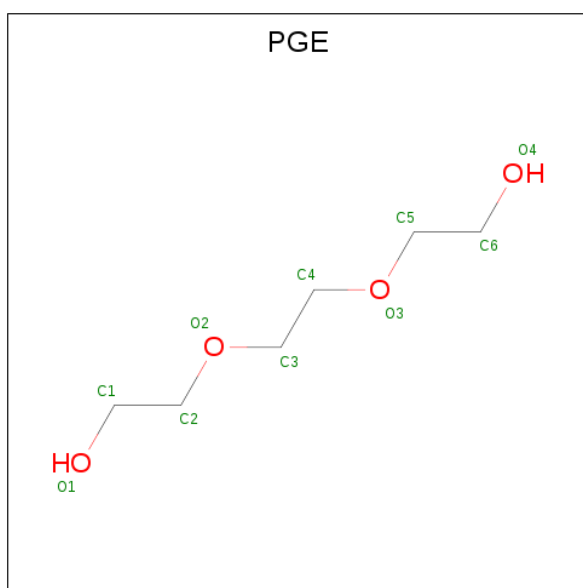
Mol	Chain	Residues	Atoms			ZeroOcc	AltConf
5	A	1	Total	C	O	0	0
			7	4	3		
5	B	1	Total	C	O	0	0
			7	4	3		
5	B	1	Total	C	O	0	0
			7	4	3		
5	C	1	Total	C	O	0	0
			7	4	3		
5	C	1	Total	C	O	0	0
			7	4	3		

- Molecule 6 is SULFATE ION (three-letter code: SO4) (formula: O₄S).



Mol	Chain	Residues	Atoms			ZeroOcc	AltConf
6	A	1	Total	O	S	0	0
			5	4	1		
6	B	1	Total	O	S	0	0
			5	4	1		

- Molecule 7 is TRIETHYLENE GLYCOL (three-letter code: PGE) (formula: $C_6H_{14}O_4$).



Mol	Chain	Residues	Atoms			ZeroOcc	AltConf
7	B	1	Total	C	O	0	0
			10	6	4		

- Molecule 8 is ACETATE ION (three-letter code: ACT) (formula: $C_2H_3O_2$).



Mol	Chain	Residues	Atoms			ZeroOcc	AltConf
8	C	1	Total	C	O	0	0
			4	2	2		

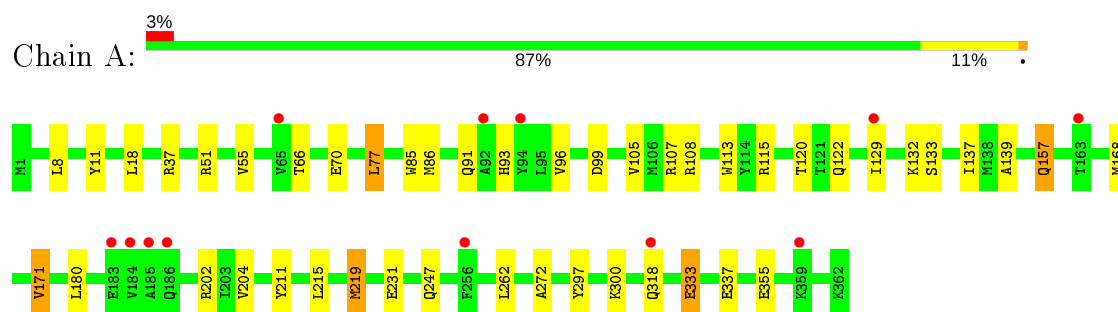
- Molecule 9 is water.

Mol	Chain	Residues	Atoms		ZeroOcc	AltConf
9	A	55	Total	O	0	0
			55	55		
9	B	62	Total	O	0	0
			62	62		
9	C	44	Total	O	0	0
			44	44		

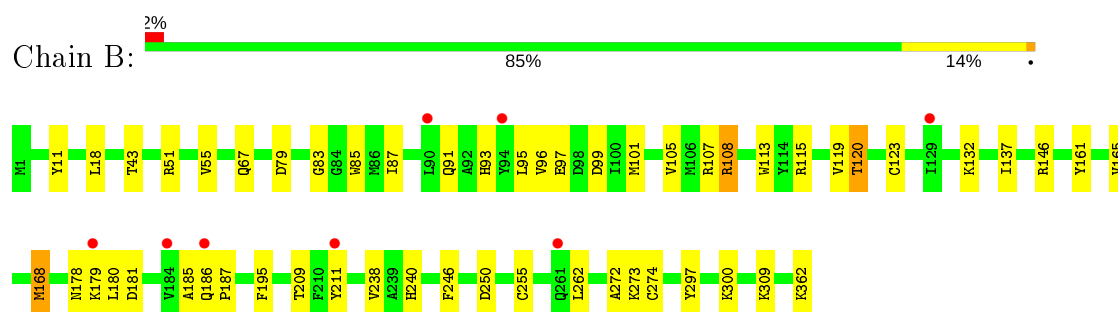
3 Residue-property plots [i](#)

These plots are drawn for all protein, RNA, DNA and oligosaccharide chains in the entry. The first graphic for a chain summarises the proportions of the various outlier classes displayed in the second graphic. The second graphic shows the sequence view annotated by issues in geometry and electron density. Residues are color-coded according to the number of geometric quality criteria for which they contain at least one outlier: green = 0, yellow = 1, orange = 2 and red = 3 or more. A red dot above a residue indicates a poor fit to the electron density ($RSRZ > 2$). Stretches of 2 or more consecutive residues without any outlier are shown as a green connector. Residues present in the sample, but not in the model, are shown in grey.

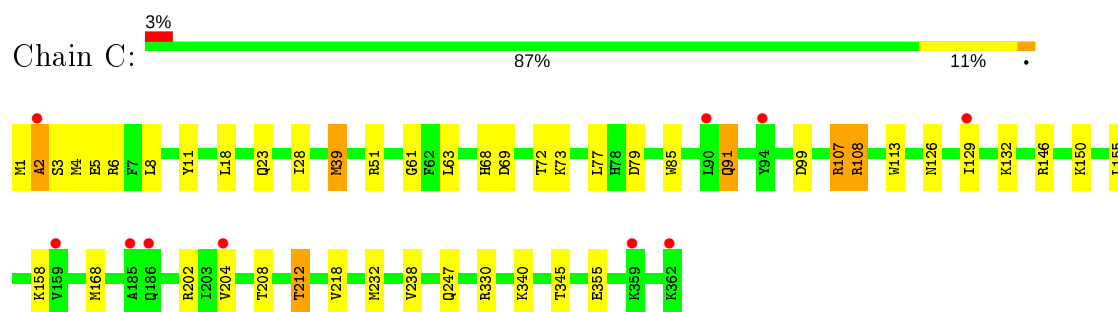
- Molecule 1: Farnesyl pyrophosphate synthase



- Molecule 1: Farnesyl pyrophosphate synthase



- Molecule 1: Farnesyl pyrophosphate synthase



4 Data and refinement statistics

Property	Value	Source
Space group	P 61 2 2	Depositor
Cell constants a, b, c, α , β , γ	103.22Å 103.22Å 386.66Å 90.00° 90.00° 120.00°	Depositor
Resolution (Å)	38.72 – 2.35 38.72 – 2.35	Depositor EDS
% Data completeness (in resolution range)	95.2 (38.72-2.35) 95.3 (38.72-2.35)	Depositor EDS
R_{merge}	0.09	Depositor
R_{sym}	(Not available)	Depositor
$\langle I/\sigma(I) \rangle$ ¹	2.23 (at 2.34Å)	Xtriage
Refinement program	REFMAC	Depositor
R, R_{free}	0.220 , 0.285 0.216 , 0.281	Depositor DCC
R_{free} test set	2526 reflections (5.10%)	wwPDB-VP
Wilson B-factor (Å ²)	40.3	Xtriage
Anisotropy	0.343	Xtriage
Bulk solvent k_{sol} (e/Å ³), B_{sol} (Å ²)	0.34 , 33.7	EDS
L-test for twinning ²	$\langle L \rangle = 0.51$, $\langle L^2 \rangle = 0.35$	Xtriage
Estimated twinning fraction	No twinning to report.	Xtriage
F_o, F_c correlation	0.94	EDS
Total number of atoms	9014	wwPDB-VP
Average B, all atoms (Å ²)	40.0	wwPDB-VP

Xtriage's analysis on translational NCS is as follows: *The largest off-origin peak in the Patterson function is 4.60% of the height of the origin peak. No significant pseudotranslation is detected.*

¹Intensities estimated from amplitudes.

²Theoretical values of $\langle |L| \rangle$, $\langle L^2 \rangle$ for acentric reflections are 0.5, 0.333 respectively for untwinned datasets, and 0.375, 0.2 for perfectly twinned datasets.

5 Model quality [i](#)

5.1 Standard geometry [i](#)

Bond lengths and bond angles in the following residue types are not validated in this section: MG, PGE, IPE, 0M9, SO4, ACT, PEG

The Z score for a bond length (or angle) is the number of standard deviations the observed value is removed from the expected value. A bond length (or angle) with $|Z| > 5$ is considered an outlier worth inspection. RMSZ is the root-mean-square of all Z scores of the bond lengths (or angles).

Mol	Chain	Bond lengths		Bond angles	
		RMSZ	$\# Z > 5$	RMSZ	$\# Z > 5$
1	A	0.47	0/2973	0.56	0/4028
1	B	0.49	0/2968	0.58	0/4021
1	C	0.45	0/2956	0.55	0/4004
All	All	0.47	0/8897	0.57	0/12053

Chiral center outliers are detected by calculating the chiral volume of a chiral center and verifying if the center is modelled as a planar moiety or with the opposite hand. A planarity outlier is detected by checking planarity of atoms in a peptide group, atoms in a mainchain group or atoms of a sidechain that are expected to be planar.

Mol	Chain	#Chirality outliers	#Planarity outliers
1	C	0	1

There are no bond length outliers.

There are no bond angle outliers.

There are no chirality outliers.

All (1) planarity outliers are listed below:

Mol	Chain	Res	Type	Group
1	C	2	ALA	Peptide

5.2 Too-close contacts [i](#)

In the following table, the Non-H and H(model) columns list the number of non-hydrogen atoms and hydrogen atoms in the chain respectively. The H(added) column lists the number of hydrogen atoms added and optimized by MolProbity. The Clashes column lists the number of clashes within the asymmetric unit, whereas Symm-Clashes lists symmetry related clashes.

Mol	Chain	Non-H	H(model)	H(added)	Clashes	Symm-Clashes
1	A	2907	0	2867	33	0
1	B	2903	0	2865	53	0
1	C	2891	0	2856	33	0
2	A	3	0	0	0	0
2	B	3	0	0	0	0
2	C	3	0	0	0	0
3	A	14	0	13	3	0
3	B	14	0	13	1	0
3	C	14	0	13	0	0
4	A	14	0	9	5	0
4	B	14	0	9	7	0
4	C	14	0	9	3	0
5	A	7	0	10	7	0
5	B	14	0	20	8	0
5	C	14	0	20	2	0
6	A	5	0	0	0	0
6	B	5	0	0	0	0
7	B	10	0	14	10	0
8	C	4	0	3	0	0
9	A	55	0	0	0	0
9	B	62	0	0	0	0
9	C	44	0	0	2	0
All	All	9014	0	8721	117	0

The all-atom clashscore is defined as the number of clashes found per 1000 atoms (including hydrogen atoms). The all-atom clashscore for this structure is 7.

The worst 5 of 117 close contacts within the same asymmetric unit are listed below, sorted by their clash magnitude.

Atom-1	Atom-2	Interatomic distance (Å)	Clash overlap (Å)
1:B:113:TRP:H	5:B:406:PEG:H22	1.10	1.14
3:A:404:OM9:H7	4:A:405:IPE:H22	1.27	1.11
1:A:132:LYS:HB3	7:B:409:PGE:H6	1.35	1.06
1:B:132:LYS:HD2	7:B:409:PGE:H12	1.43	0.97
1:C:51:ARG:HH11	1:C:212:THR:HB	1.37	0.87

There are no symmetry-related clashes.

5.3 Torsion angles

5.3.1 Protein backbone

In the following table, the Percentiles column shows the percent Ramachandran outliers of the chain as a percentile score with respect to all X-ray entries followed by that with respect to entries of similar resolution.

The Analysed column shows the number of residues for which the backbone conformation was analysed, and the total number of residues.

Mol	Chain	Analysed	Favoured	Allowed	Outliers	Percentiles	
1	A	362/362 (100%)	356 (98%)	6 (2%)	0	100	100
1	B	362/362 (100%)	356 (98%)	6 (2%)	0	100	100
1	C	360/362 (99%)	352 (98%)	7 (2%)	1 (0%)	41	47
All	All	1084/1086 (100%)	1064 (98%)	19 (2%)	1 (0%)	51	63

All (1) Ramachandran outliers are listed below:

Mol	Chain	Res	Type
1	C	3	SER

5.3.2 Protein sidechains

In the following table, the Percentiles column shows the percent sidechain outliers of the chain as a percentile score with respect to all X-ray entries followed by that with respect to entries of similar resolution.

The Analysed column shows the number of residues for which the sidechain conformation was analysed, and the total number of residues.

Mol	Chain	Analysed	Rotameric	Outliers	Percentiles	
1	A	311/309 (101%)	293 (94%)	18 (6%)	20	22
1	B	311/309 (101%)	301 (97%)	10 (3%)	39	47
1	C	309/309 (100%)	295 (96%)	14 (4%)	27	33
All	All	931/927 (100%)	889 (96%)	42 (4%)	27	33

5 of 42 residues with a non-rotameric sidechain are listed below:

Mol	Chain	Res	Type
1	B	18	LEU
1	B	168	MET

Continued on next page...

Continued from previous page...

Mol	Chain	Res	Type
1	C	238	VAL
1	B	55	VAL
1	B	108	ARG

Some sidechains can be flipped to improve hydrogen bonding and reduce clashes. 5 of 12 such sidechains are listed below:

Mol	Chain	Res	Type
1	B	78	HIS
1	B	91	GLN
1	B	240	HIS
1	B	67	GLN
1	B	186	GLN

5.3.3 RNA [i](#)

There are no RNA molecules in this entry.

5.4 Non-standard residues in protein, DNA, RNA chains [i](#)

There are no non-standard protein/DNA/RNA residues in this entry.

5.5 Carbohydrates [i](#)

There are no monosaccharides in this entry.

5.6 Ligand geometry [i](#)

Of 24 ligands modelled in this entry, 9 are monoatomic - leaving 15 for Mogul analysis.

In the following table, the Counts columns list the number of bonds (or angles) for which Mogul statistics could be retrieved, the number of bonds (or angles) that are observed in the model and the number of bonds (or angles) that are defined in the Chemical Component Dictionary. The Link column lists molecule types, if any, to which the group is linked. The Z score for a bond length (or angle) is the number of standard deviations the observed value is removed from the expected value. A bond length (or angle) with $|Z| > 2$ is considered an outlier worth inspection. RMSZ is the root-mean-square of all Z scores of the bond lengths (or angles).

Mol	Type	Chain	Res	Link	Bond lengths			Bond angles		
					Counts	RMSZ	$\# Z > 2$	Counts	RMSZ	$\# Z > 2$
5	PEG	A	406	-	6,6,6	0.67	0	5,5,5	0.45	0

Mol	Type	Chain	Res	Link	Bond lengths			Bond angles		
					Counts	RMSZ	# Z > 2	Counts	RMSZ	# Z > 2
5	PEG	B	406	-	6,6,6	0.59	0	5,5,5	0.55	0
5	PEG	C	408	-	6,6,6	0.49	0	5,5,5	0.34	0
8	ACT	C	406	-	1,3,3	1.31	0	0,3,3	0.00	-
5	PEG	B	407	-	6,6,6	0.55	0	5,5,5	0.28	0
5	PEG	C	407	-	6,6,6	0.49	0	5,5,5	0.38	0
3	0M9	B	404	2	12,13,13	1.64	4 (33%)	14,19,19	1.63	3 (21%)
3	0M9	A	404	2	12,13,13	1.37	2 (16%)	14,19,19	2.13	4 (28%)
4	IPE	A	405	-	11,13,13	0.52	0	15,19,19	1.21	1 (6%)
3	0M9	C	404	2	12,13,13	1.40	3 (25%)	14,19,19	1.85	4 (28%)
4	IPE	B	405	-	11,13,13	0.53	0	15,19,19	1.15	0
7	PGE	B	409	-	9,9,9	0.57	0	8,8,8	0.34	0
6	SO4	A	407	-	4,4,4	0.16	0	6,6,6	0.19	0
4	IPE	C	405	-	11,13,13	0.63	0	15,19,19	1.22	0
6	SO4	B	408	-	4,4,4	0.10	0	6,6,6	0.21	0

In the following table, the Chirals column lists the number of chiral outliers, the number of chiral centers analysed, the number of these observed in the model and the number defined in the Chemical Component Dictionary. Similar counts are reported in the Torsion and Rings columns. '-' means no outliers of that kind were identified.

Mol	Type	Chain	Res	Link	Chirals	Torsions	Rings
5	PEG	A	406	-	-	3/4/4/4	-
5	PEG	B	406	-	-	1/4/4/4	-
5	PEG	C	408	-	-	2/4/4/4	-
5	PEG	C	407	-	-	2/4/4/4	-
3	0M9	B	404	2	-	8/15/17/17	-
3	0M9	A	404	2	-	6/15/17/17	-
4	IPE	A	405	-	-	5/13/13/13	-
3	0M9	C	404	2	-	11/15/17/17	-
4	IPE	B	405	-	-	3/13/13/13	-
7	PGE	B	409	-	-	4/7/7/7	-
5	PEG	B	407	-	-	2/4/4/4	-
4	IPE	C	405	-	-	4/13/13/13	-

The worst 5 of 9 bond length outliers are listed below:

Mol	Chain	Res	Type	Atoms	Z	Observed(Å)	Ideal(Å)
3	B	404	0M9	P2-O5	-2.54	1.50	1.54
3	B	404	0M9	P2-O4	-2.54	1.50	1.54

Continued on next page...

Continued from previous page...

Mol	Chain	Res	Type	Atoms	Z	Observed(Å)	Ideal(Å)
3	B	404	0M9	P1-O1	-2.50	1.50	1.54
3	B	404	0M9	P1-O3	-2.41	1.51	1.54
3	A	404	0M9	P1-O1	-2.40	1.51	1.54

The worst 5 of 12 bond angle outliers are listed below:

Mol	Chain	Res	Type	Atoms	Z	Observed(°)	Ideal(°)
3	A	404	0M9	O6-P2-C9	-4.85	98.53	112.29
3	C	404	0M9	C8-N1-C7	4.43	123.32	113.42
3	A	404	0M9	O2-P1-C9	-4.39	99.84	112.29
3	B	404	0M9	C8-N1-C7	3.34	120.89	113.42
3	C	404	0M9	O3-P1-C9	-3.19	96.90	106.88

There are no chirality outliers.

5 of 51 torsion outliers are listed below:

Mol	Chain	Res	Type	Atoms
3	A	404	0M9	C8-C9-P2-O6
4	C	405	IPE	C2-C1-O1-PA
4	C	405	IPE	O1-C1-C2-C3
4	C	405	IPE	C1-O1-PA-O3A
3	B	404	0M9	C8-C9-P1-O3

There are no ring outliers.

9 monomers are involved in 43 short contacts:

Mol	Chain	Res	Type	Clashes	Symm-Clashes
5	A	406	PEG	7	0
5	B	406	PEG	8	0
5	C	407	PEG	2	0
3	B	404	0M9	1	0
3	A	404	0M9	3	0
4	A	405	IPE	5	0
4	B	405	IPE	7	0
7	B	409	PGE	10	0
4	C	405	IPE	3	0

5.7 Other polymers

There are no such residues in this entry.

5.8 Polymer linkage issues ⓘ

There are no chain breaks in this entry.

6 Fit of model and data [i](#)

6.1 Protein, DNA and RNA chains [i](#)

In the following table, the column labelled ‘#RSRZ> 2’ contains the number (and percentage) of RSRZ outliers, followed by percent RSRZ outliers for the chain as percentile scores relative to all X-ray entries and entries of similar resolution. The OWAB column contains the minimum, median, 95th percentile and maximum values of the occupancy-weighted average B-factor per residue. The column labelled ‘Q< 0.9’ lists the number of (and percentage) of residues with an average occupancy less than 0.9.

Mol	Chain	Analysed	<RSRZ>	#RSRZ>2	OWAB(Å ²)	Q<0.9
1	A	362/362 (100%)	0.15	12 (3%) 46 59	26, 41, 59, 74	0
1	B	362/362 (100%)	0.08	8 (2%) 62 72	25, 36, 50, 60	0
1	C	362/362 (100%)	0.16	10 (2%) 53 64	25, 41, 57, 66	0
All	All	1086/1086 (100%)	0.13	30 (2%) 53 64	25, 39, 57, 74	0

The worst 5 of 30 RSRZ outliers are listed below:

Mol	Chain	Res	Type	RSRZ
1	B	186	GLN	4.7
1	A	65	VAL	4.1
1	B	129	ILE	3.6
1	B	94	TYR	3.5
1	A	129	ILE	3.5

6.2 Non-standard residues in protein, DNA, RNA chains [i](#)

There are no non-standard protein/DNA/RNA residues in this entry.

6.3 Carbohydrates [i](#)

There are no monosaccharides in this entry.

6.4 Ligands [i](#)

In the following table, the Atoms column lists the number of modelled atoms in the group and the number defined in the chemical component dictionary. The B-factors column lists the minimum, median, 95th percentile and maximum values of B factors of atoms in the group. The column labelled ‘Q< 0.9’ lists the number of atoms with occupancy less than 0.9.

Mol	Type	Chain	Res	Atoms	RSCC	RSR	B-factors(\AA^2)	Q<0.9
5	PEG	B	407	7/7	0.62	0.43	58,60,61,61	0
5	PEG	C	408	7/7	0.74	0.20	62,63,64,65	0
5	PEG	C	407	7/7	0.76	0.27	64,64,65,65	0
7	PGE	B	409	10/10	0.80	0.28	33,44,46,47	0
2	MG	A	401	1/1	0.81	0.13	35,35,35,35	0
2	MG	B	401	1/1	0.81	0.18	33,33,33,33	0
5	PEG	B	406	7/7	0.83	0.33	45,46,48,48	0
5	PEG	A	406	7/7	0.86	0.31	40,44,47,47	0
2	MG	A	402	1/1	0.86	0.16	35,35,35,35	0
2	MG	B	402	1/1	0.87	0.13	30,30,30,30	0
2	MG	C	402	1/1	0.90	0.13	32,32,32,32	0
8	ACT	C	406	4/4	0.91	0.10	61,61,61,61	0
4	IPE	C	405	14/14	0.92	0.18	48,56,58,58	0
6	SO4	B	408	5/5	0.92	0.16	68,69,69,69	0
6	SO4	A	407	5/5	0.94	0.17	66,66,66,67	0
3	0M9	A	404	14/14	0.95	0.12	31,34,36,36	0
3	0M9	C	404	14/14	0.96	0.16	29,33,34,34	0
4	IPE	A	405	14/14	0.96	0.12	44,48,50,50	0
2	MG	A	403	1/1	0.97	0.08	34,34,34,34	0
2	MG	C	401	1/1	0.97	0.12	35,35,35,35	0
4	IPE	B	405	14/14	0.97	0.10	39,45,48,48	0
2	MG	C	403	1/1	0.97	0.09	35,35,35,35	0
3	0M9	B	404	14/14	0.98	0.14	30,33,34,34	0
2	MG	B	403	1/1	0.98	0.08	28,28,28,28	0

6.5 Other polymers [i](#)

There are no such residues in this entry.