



Full wwPDB X-ray Structure Validation Report ⓘ

Aug 6, 2020 – 04:37 PM BST

PDB ID : 4DXW
Title : Crystal structure of NavRh, a voltage-gated sodium channel
Authors : Zhang, X.; Ren, W.L.; Yan, C.Y.; Wang, J.W.; Yan, N.
Deposited on : 2012-02-28
Resolution : 3.05 Å(reported)

This is a Full wwPDB X-ray Structure Validation Report for a publicly released PDB entry.

We welcome your comments at validation@mail.wwpdb.org

A user guide is available at

<https://www.wwpdb.org/validation/2017/XrayValidationReportHelp>

with specific help available everywhere you see the ⓘ symbol.

The following versions of software and data (see [references ⓘ](#)) were used in the production of this report:

MolProbity : 4.02b-467
Mogul : 1.8.5 (274361), CSD as541be (2020)
Xtriage (Phenix) : 1.13
EDS : 2.13.1
buster-report : 1.1.7 (2018)
Percentile statistics : 20191225.v01 (using entries in the PDB archive December 25th 2019)
Refmac : 5.8.0158
CCP4 : 7.0.044 (Gargrove)
Ideal geometry (proteins) : Engh & Huber (2001)
Ideal geometry (DNA, RNA) : Parkinson et al. (1996)
Validation Pipeline (wwPDB-VP) : 2.13.1

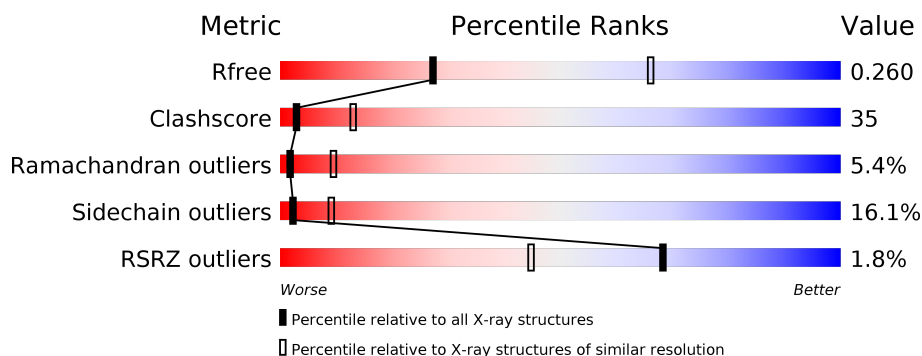
1 Overall quality at a glance

The following experimental techniques were used to determine the structure:

X-RAY DIFFRACTION

The reported resolution of this entry is 3.05 Å.

Percentile scores (ranging between 0-100) for global validation metrics of the entry are shown in the following graphic. The table shows the number of entries on which the scores are based.



Metric	Whole archive (#Entries)	Similar resolution (#Entries, resolution range(Å))
R_{free}	130704	1754 (3.10-3.02)
Clashscore	141614	1864 (3.10-3.02)
Ramachandran outliers	138981	1794 (3.10-3.02)
Sidechain outliers	138945	1793 (3.10-3.02)
RSRZ outliers	127900	1713 (3.10-3.02)

The table below summarises the geometric issues observed across the polymeric chains and their fit to the electron density. The red, orange, yellow and green segments on the lower bar indicate the fraction of residues that contain outliers for ≥ 3 , 2, 1 and 0 types of geometric quality criteria respectively. A grey segment represents the fraction of residues that are not modelled. The numeric value for each fraction is indicated below the corresponding segment, with a dot representing fractions $\leq 5\%$. The upper red bar (where present) indicates the fraction of residues that have poor fit to the electron density. The numeric value is given above the bar.

Mol	Chain	Length	Quality of chain
1	A	229	<div> <div>2%</div> <div> <div></div> <div>28%</div> <div>49%</div> <div>14%</div> <div>•</div> <div>8%</div> </div> </div>
1	B	229	<div> <div>3%</div> <div> <div></div> <div>45%</div> <div>40%</div> <div>10%</div> <div>• •</div> </div> </div>
1	C	229	<div> <div></div> <div> <div>37%</div> <div>38%</div> <div>10%</div> <div>•</div> <div>13%</div> </div> </div>
1	D	229	<div> <div>•</div> <div> <div>37%</div> <div>37%</div> <div>12%</div> <div>•</div> <div>13%</div> </div> </div>

The following table lists non-polymeric compounds, carbohydrate monomers and non-standard residues in protein, DNA, RNA chains that are outliers for geometric or electron-density-fit crite-

ria:

Mol	Type	Chain	Res	Chirality	Geometry	Clashes	Electron density
2	BNG	C	302	-	-	X	-

2 Entry composition

There are 5 unique types of molecules in this entry. The entry contains 6914 atoms, of which 0 are hydrogens and 0 are deuteriums.

In the tables below, the ZeroOcc column contains the number of atoms modelled with zero occupancy, the AltConf column contains the number of residues with at least one atom in alternate conformation and the Trace column contains the number of residues modelled with at most 2 atoms.

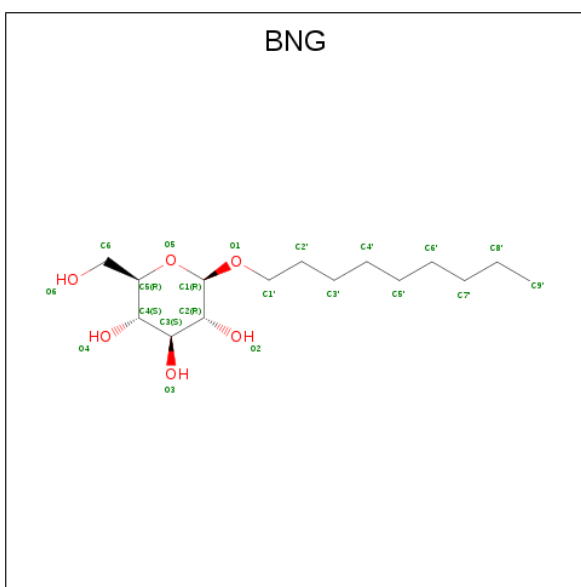
- Molecule 1 is a protein called Ion transport protein.

Mol	Chain	Residues	Atoms					ZeroOcc	AltConf	Trace
1	A	210	Total	C	N	O	S	0	0	0
			1718	1170	259	285	4			
1	B	222	Total	C	N	O	S	0	0	0
			1812	1229	276	303	4			
1	C	199	Total	C	N	O	S	0	0	0
			1630	1111	244	271	4			
1	D	199	Total	C	N	O	S	0	0	0
			1627	1111	244	268	4			

There are 8 discrepancies between the modelled and reference sequences:

Chain	Residue	Modelled	Actual	Comment	Reference
A	208	SER	GLY	engineered mutation	UNP D0RMU8
A	229	GLU	-	expression tag	UNP D0RMU8
B	208	SER	GLY	engineered mutation	UNP D0RMU8
B	229	GLU	-	expression tag	UNP D0RMU8
C	208	SER	GLY	engineered mutation	UNP D0RMU8
C	229	GLU	-	expression tag	UNP D0RMU8
D	208	SER	GLY	engineered mutation	UNP D0RMU8
D	229	GLU	-	expression tag	UNP D0RMU8

- Molecule 2 is nonyl beta-D-glucopyranoside (three-letter code: BNG) (formula: C₁₅H₃₀O₆).

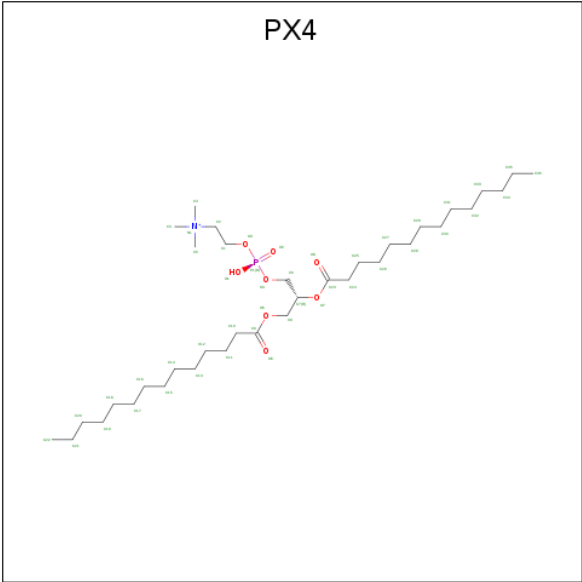


Mol	Chain	Residues	Atoms			ZeroOcc	AltConf
2	A	1	Total	C	O	0	0
			21	15	6		
2	A	1	Total	C	O	0	0
			21	15	6		
2	C	1	Total	C	O	0	0
			21	15	6		
2	C	1	Total	C	O	0	0
			21	15	6		

- Molecule 3 is CALCIUM ION (three-letter code: CA) (formula: Ca).

Mol	Chain	Residues	Atoms		ZeroOcc	AltConf
3	B	1	Total	Ca	0	0
			1	1		
3	A	1	Total	Ca	0	0
			1	1		

- Molecule 4 is 1,2-DIMYRISTOYL-SN-GLYCERO-3-PHOSPHOCHOLINE (three-letter code: PX4) (formula: C₃₆H₇₃NO₈P).



Mol	Chain	Residues	Atoms			ZeroOcc	AltConf
4	B	1	Total	C	O	0	0
			35	31	4		

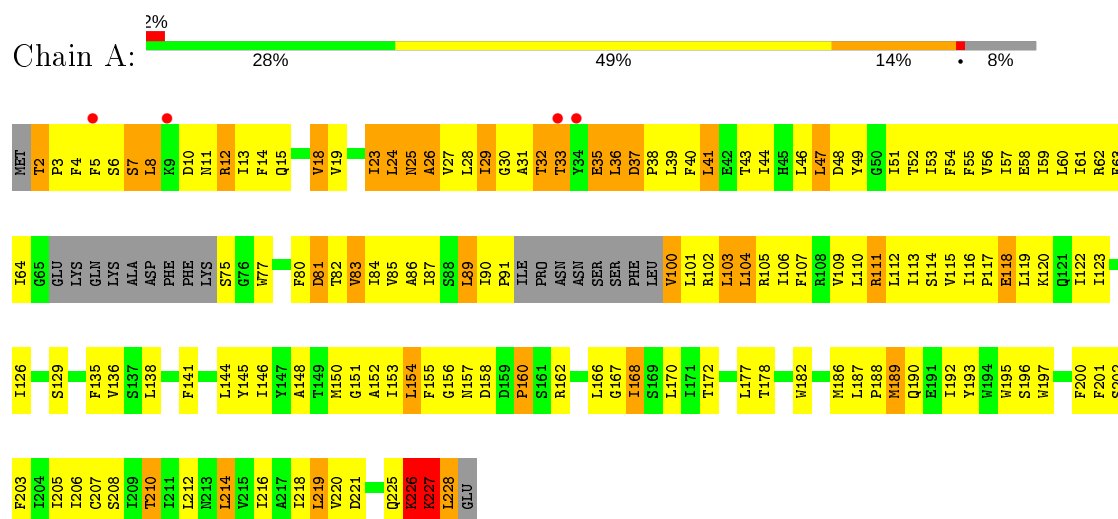
- Molecule 5 is water.

Mol	Chain	Residues	Atoms		ZeroOcc	AltConf
5	A	3	Total	O	0	0
			3	3		
5	B	1	Total	O	0	0
			1	1		
5	C	2	Total	O	0	0
			2	2		

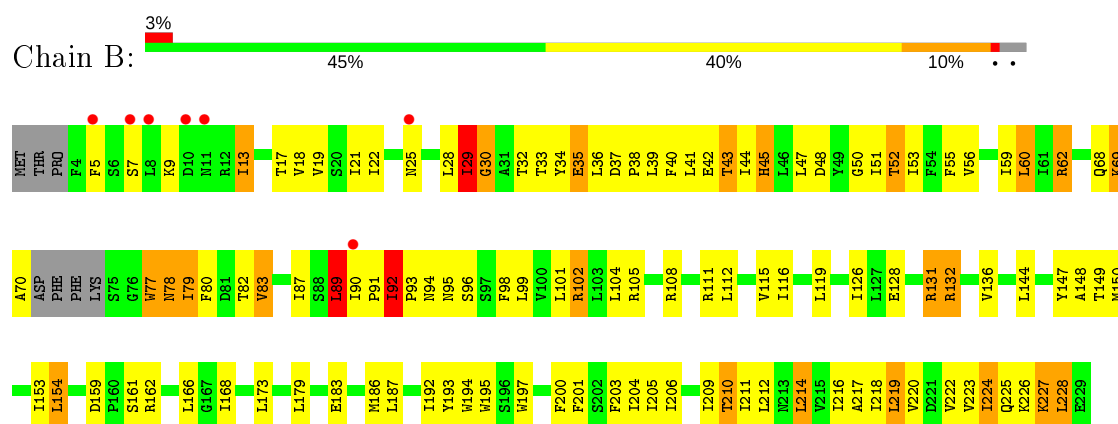
3 Residue-property plots

These plots are drawn for all protein, RNA, DNA and oligosaccharide chains in the entry. The first graphic for a chain summarises the proportions of the various outlier classes displayed in the second graphic. The second graphic shows the sequence view annotated by issues in geometry and electron density. Residues are color-coded according to the number of geometric quality criteria for which they contain at least one outlier: green = 0, yellow = 1, orange = 2 and red = 3 or more. A red dot above a residue indicates a poor fit to the electron density ($RSRZ > 2$). Stretches of 2 or more consecutive residues without any outlier are shown as a green connector. Residues present in the sample, but not in the model, are shown in grey.

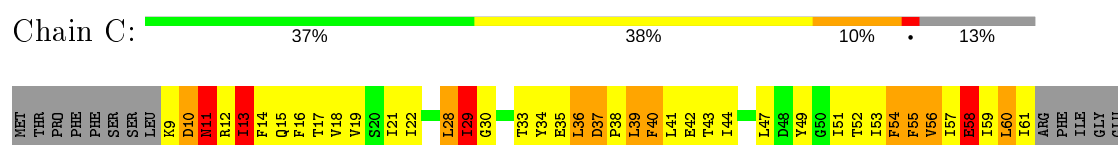
• Molecule 1: Ion transport protein

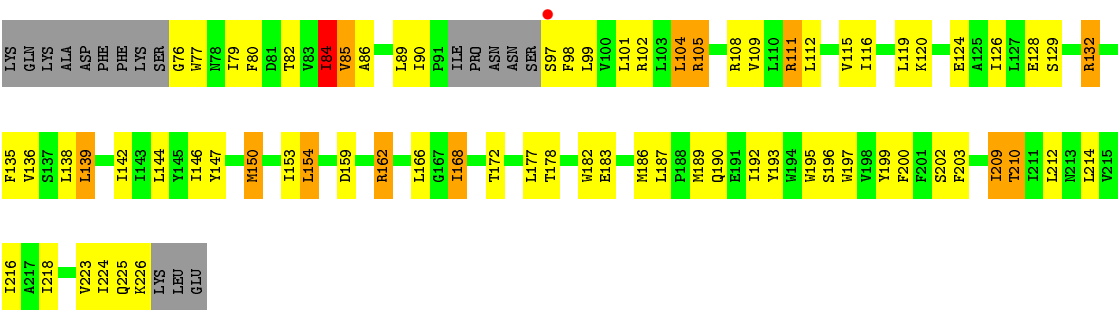


• Molecule 1: Ion transport protein

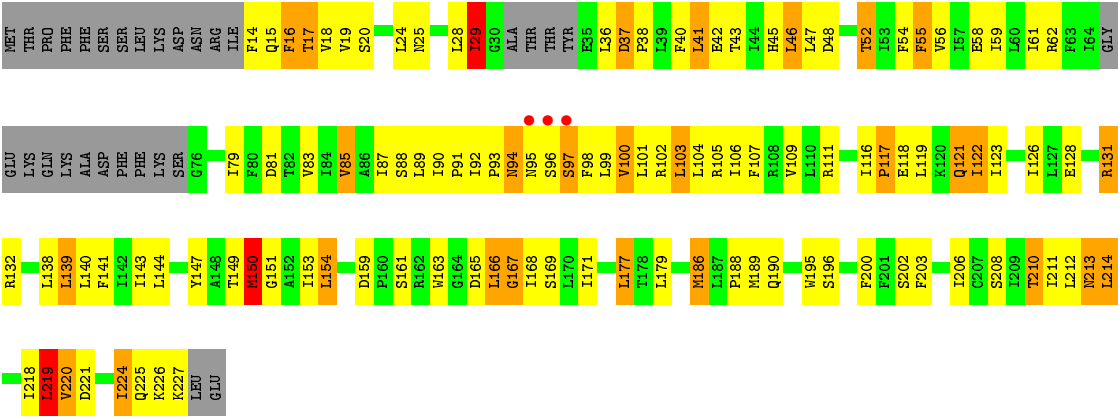


• Molecule 1: Ion transport protein





● Molecule 1: Ion transport protein



4 Data and refinement statistics

Property	Value	Source
Space group	P 42	Depositor
Cell constants a, b, c, α , β , γ	163.44Å 163.44Å 61.07Å 90.00° 90.00° 90.00°	Depositor
Resolution (Å)	45.33 – 3.05 45.33 – 3.05	Depositor EDS
% Data completeness (in resolution range)	99.6 (45.33-3.05) 99.7 (45.33-3.05)	Depositor EDS
R_{merge}	(Not available)	Depositor
R_{sym}	(Not available)	Depositor
$\langle I/\sigma(I) \rangle$ ¹	1.83 (at 3.06Å)	Xtriage
Refinement program	PHENIX (phenix.refine: 1.7.3_928)	Depositor
R, R_{free}	0.237 , 0.268 0.239 , 0.260	Depositor DCC
R_{free} test set	1429 reflections (4.61%)	wwPDB-VP
Wilson B-factor (Å ²)	89.2	Xtriage
Anisotropy	0.098	Xtriage
Bulk solvent k_{sol} (e/Å ³), B_{sol} (Å ²)	0.28 , 67.8	EDS
L-test for twinning ²	$\langle L \rangle = 0.49$, $\langle L^2 \rangle = 0.32$	Xtriage
Estimated twinning fraction	0.025 for h,-k,-l	Xtriage
F_o, F_c correlation	0.93	EDS
Total number of atoms	6914	wwPDB-VP
Average B, all atoms (Å ²)	95.0	wwPDB-VP

Xtriage's analysis on translational NCS is as follows: *The largest off-origin peak in the Patterson function is 3.10% of the height of the origin peak. No significant pseudotranslation is detected.*

¹Intensities estimated from amplitudes.

²Theoretical values of $\langle |L| \rangle$, $\langle L^2 \rangle$ for acentric reflections are 0.5, 0.333 respectively for untwinned datasets, and 0.375, 0.2 for perfectly twinned datasets.

5 Model quality [i](#)

5.1 Standard geometry [i](#)

Bond lengths and bond angles in the following residue types are not validated in this section: CA, BNG, PX4

The Z score for a bond length (or angle) is the number of standard deviations the observed value is removed from the expected value. A bond length (or angle) with $|Z| > 5$ is considered an outlier worth inspection. RMSZ is the root-mean-square of all Z scores of the bond lengths (or angles).

Mol	Chain	Bond lengths		Bond angles	
		RMSZ	$\# Z > 5$	RMSZ	$\# Z > 5$
1	A	0.53	0/1758	0.74	2/2397 (0.1%)
1	B	0.51	0/1854	0.69	0/2526
1	C	0.55	0/1667	0.70	1/2275 (0.0%)
1	D	0.50	0/1665	0.69	1/2273 (0.0%)
All	All	0.52	0/6944	0.70	4/9471 (0.0%)

There are no bond length outliers.

All (4) bond angle outliers are listed below:

Mol	Chain	Res	Type	Atoms	Z	Observed(°)	Ideal(°)
1	A	227	LYS	CD-CE-NZ	-5.14	99.87	111.70
1	D	150	MET	CA-CB-CG	5.12	122.00	113.30
1	A	227	LYS	N-CA-C	5.11	124.80	111.00
1	C	150	MET	CG-SD-CE	5.11	108.37	100.20

There are no chirality outliers.

There are no planarity outliers.

5.2 Too-close contacts [i](#)

In the following table, the Non-H and H(model) columns list the number of non-hydrogen atoms and hydrogen atoms in the chain respectively. The H(added) column lists the number of hydrogen atoms added and optimized by MolProbity. The Clashes column lists the number of clashes within the asymmetric unit, whereas Symm-Clashes lists symmetry related clashes.

Mol	Chain	Non-H	H(model)	H(added)	Clashes	Symm-Clashes
1	A	1718	0	1821	155	0
1	B	1812	0	1915	111	0
1	C	1630	0	1728	133	0

Continued on next page...

Continued from previous page...

Mol	Chain	Non-H	H(model)	H(added)	Clashes	Symm-Clashes
1	D	1627	0	1723	122	0
2	A	42	0	60	6	0
2	C	42	0	60	9	0
3	A	1	0	0	0	0
3	B	1	0	0	0	0
4	B	35	0	57	6	0
5	A	3	0	0	0	0
5	B	1	0	0	0	0
5	C	2	0	0	0	0
All	All	6914	0	7364	496	0

The all-atom clashscore is defined as the number of clashes found per 1000 atoms (including hydrogen atoms). The all-atom clashscore for this structure is 35.

All (496) close contacts within the same asymmetric unit are listed below, sorted by their clash magnitude.

Atom-1	Atom-2	Interatomic distance (Å)	Clash overlap (Å)
1:C:168:ILE:CD1	2:C:302:BNG:H61	1.48	1.43
1:C:168:ILE:CD1	2:C:302:BNG:C6	2.13	1.25
1:C:168:ILE:HD13	2:C:302:BNG:C6	1.73	1.13
1:C:168:ILE:HD13	2:C:302:BNG:H61	1.21	1.11
1:C:28:LEU:HG	1:C:29:ILE:N	1.63	1.09
1:C:168:ILE:HD11	2:C:302:BNG:H61	1.27	1.08
1:C:132:ARG:HB3	1:C:132:ARG:HH11	0.94	1.07
1:C:168:ILE:HD11	2:C:302:BNG:C6	1.79	1.05
1:C:59:ILE:HD13	1:C:82:THR:HG22	1.40	1.02
1:C:132:ARG:NH1	1:C:132:ARG:HB3	1.75	1.01
1:B:102:ARG:HH12	1:C:153:ILE:HG12	1.31	0.93
1:A:80:PHE:CZ	1:A:84:ILE:CD1	2.53	0.92
1:D:103:LEU:H	1:D:103:LEU:HD22	1.33	0.90
2:A:301:BNG:HO2	1:B:197:TRP:HE1	1.14	0.89
1:B:19:VAL:HG22	1:B:112:LEU:HD22	1.54	0.89
1:D:100:VAL:HA	1:D:103:LEU:HD23	1.55	0.88
1:B:98:PHE:HB3	1:B:99:LEU:HB2	1.53	0.88
1:A:80:PHE:CZ	1:A:84:ILE:HD12	2.08	0.87
1:B:227:LYS:HG2	1:B:228:LEU:N	1.86	0.87
1:B:102:ARG:NH1	1:C:153:ILE:HG12	1.89	0.86
1:D:56:VAL:HG21	1:D:89:LEU:HD13	1.57	0.84
1:C:132:ARG:CB	1:C:132:ARG:HH11	1.86	0.84
1:C:168:ILE:HD13	2:C:302:BNG:H62	1.60	0.84
1:C:168:ILE:CD1	2:C:302:BNG:H62	2.09	0.82

Continued on next page...

Continued from previous page...

Atom-1	Atom-2	Interatomic distance (Å)	Clash overlap (Å)
1:C:182:TRP:HZ3	1:C:186:MET:HE2	1.44	0.82
1:D:55:PHE:HB3	1:D:85:VAL:HG21	1.61	0.82
1:C:102:ARG:HD2	1:D:153:ILE:HD11	1.62	0.81
1:D:42:GLU:O	1:D:46:LEU:HD12	1.81	0.81
1:B:77:TRP:O	1:B:79:ILE:N	2.15	0.80
1:B:77:TRP:O	1:B:80:PHE:N	2.15	0.79
1:B:78:ASN:O	1:B:82:THR:HG23	1.83	0.79
1:D:202:SER:O	1:D:206:ILE:HG12	1.81	0.79
1:A:58:GLU:OE1	1:A:62:ARG:NH2	2.15	0.79
1:A:201:PHE:O	1:A:205:ILE:HD12	1.84	0.78
1:A:219:LEU:HD12	1:D:219:LEU:HD21	1.66	0.78
1:B:18:VAL:HG13	1:B:51:ILE:HD13	1.66	0.77
1:C:29:ILE:O	1:C:29:ILE:HG13	1.83	0.77
1:C:29:ILE:HG21	1:C:105:ARG:CZ	2.14	0.77
1:D:42:GLU:HA	1:D:45:HIS:CD2	2.19	0.77
1:D:94:ASN:O	1:D:96:SER:N	2.17	0.77
1:A:43:THR:HG23	1:A:47:LEU:HD21	1.66	0.76
1:B:119:LEU:HD22	1:C:139:LEU:HD13	1.66	0.76
1:C:177:LEU:HD23	1:C:177:LEU:C	2.05	0.76
1:A:47:LEU:O	1:A:51:ILE:HG13	1.85	0.76
1:A:5:PHE:O	1:A:7:SER:N	2.18	0.76
1:D:190:GLN:OE1	1:D:196:SER:HB2	1.86	0.76
1:C:57:ILE:O	1:C:60:LEU:N	2.18	0.75
1:D:40:PHE:HA	1:D:43:THR:HG23	1.67	0.75
1:A:146:ILE:HG12	1:D:106:ILE:HG23	1.69	0.74
1:C:190:GLN:OE1	1:C:196:SER:HB3	1.87	0.74
1:C:102:ARG:HA	1:C:105:ARG:HG3	1.68	0.74
1:A:37:ASP:HB2	1:A:40:PHE:HB3	1.70	0.74
1:B:36:LEU:HD23	1:B:37:ASP:H	1.52	0.73
1:B:222:VAL:HG21	1:C:216:ILE:HG21	1.70	0.73
1:B:183:GLU:O	1:B:187:LEU:HB2	1.88	0.73
1:C:182:TRP:CZ3	1:C:186:MET:CE	2.72	0.73
1:B:212:LEU:HD13	4:B:301:PX4:H69	1.69	0.73
1:B:59:ILE:HG21	1:B:82:THR:HG22	1.69	0.72
1:B:33:THR:O	1:B:35:GLU:N	2.21	0.72
1:C:18:VAL:HG13	1:C:51:ILE:HD13	1.72	0.72
1:D:42:GLU:HA	1:D:45:HIS:HD2	1.51	0.72
1:C:28:LEU:HG	1:C:29:ILE:H	1.48	0.72
1:D:87:ILE:HG21	1:D:107:PHE:CD2	2.25	0.72
1:B:33:THR:C	1:B:35:GLU:H	1.90	0.71
1:B:77:TRP:O	1:B:78:ASN:C	2.27	0.71

Continued on next page...

Continued from previous page...

Atom-1	Atom-2	Interatomic distance (Å)	Clash overlap (Å)
1:D:150:MET:O	1:D:154:LEU:HD22	1.91	0.71
1:A:218:ILE:HG22	1:B:216:ILE:HD12	1.73	0.71
1:A:23:ILE:O	1:A:27:VAL:HG23	1.90	0.71
1:A:118:GLU:O	1:A:122:ILE:HG13	1.90	0.70
1:C:182:TRP:HZ3	1:C:186:MET:CE	2.05	0.70
1:C:54:PHE:CD2	1:C:55:PHE:N	2.60	0.70
1:B:19:VAL:HG22	1:B:112:LEU:CD2	2.21	0.70
1:A:36:LEU:HB3	1:A:41:LEU:HD21	1.73	0.70
1:A:24:LEU:HD13	1:A:28:LEU:HD11	1.74	0.69
1:B:147:TYR:CE1	1:B:203:PHE:HB2	2.26	0.69
1:A:210:THR:HB	1:D:126:ILE:HD11	1.75	0.69
1:D:81:ASP:O	1:D:85:VAL:HB	1.93	0.69
1:A:177:LEU:HG	1:A:177:LEU:O	1.93	0.68
1:A:77:TRP:O	1:A:81:ASP:OD1	2.12	0.68
1:B:93:PRO:HB3	1:B:101:LEU:HB3	1.75	0.68
1:D:103:LEU:CD2	1:D:103:LEU:H	2.06	0.68
1:C:90:ILE:HB	1:C:104:LEU:HD11	1.76	0.68
1:B:128:GLU:O	1:B:132:ARG:NH2	2.27	0.68
1:C:182:TRP:CZ3	1:C:186:MET:HE2	2.28	0.68
1:C:162:ARG:HB2	1:C:172:THR:OG1	1.95	0.67
1:A:100:VAL:O	1:A:101:LEU:HD23	1.95	0.66
1:A:80:PHE:CE1	1:A:84:ILE:HD12	2.30	0.66
1:C:54:PHE:CE2	1:C:55:PHE:HB2	2.31	0.66
1:D:106:ILE:O	1:D:109:VAL:HG12	1.95	0.66
1:A:150:MET:O	1:A:154:LEU:HD22	1.96	0.66
1:C:59:ILE:CD1	1:C:82:THR:HG22	2.22	0.65
1:B:193:TYR:HB3	1:B:195:TRP:CE2	2.32	0.65
1:D:37:ASP:HB3	1:D:41:LEU:H	1.60	0.65
1:D:56:VAL:HG21	1:D:89:LEU:CD1	2.27	0.65
1:A:80:PHE:CE2	1:A:84:ILE:CD1	2.79	0.65
1:D:93:PRO:HB3	1:D:97:SER:OG	1.96	0.65
1:B:206:ILE:O	1:B:210:THR:HG22	1.96	0.65
1:C:209:ILE:O	1:C:212:LEU:HB3	1.96	0.65
1:B:62:ARG:HH11	1:B:62:ARG:HB2	1.61	0.64
1:A:156:GLY:O	1:A:160:PRO:HB3	1.98	0.64
1:A:226:LYS:HG3	1:A:227:LYS:HD3	1.79	0.64
1:C:182:TRP:CZ3	1:C:186:MET:HE3	2.33	0.64
1:C:56:VAL:HG23	1:C:85:VAL:HG13	1.78	0.64
1:A:84:ILE:HD13	1:A:110:LEU:HB3	1.78	0.64
1:A:227:LYS:O	1:A:228:LEU:HG	1.98	0.63
1:B:227:LYS:HG2	1:B:228:LEU:H	1.62	0.63

Continued on next page...

Continued from previous page...

Atom-1	Atom-2	Interatomic distance (Å)	Clash overlap (Å)
1:C:183:GLU:O	1:C:187:LEU:HD12	1.96	0.63
1:A:49:TYR:OH	1:A:89:LEU:O	2.17	0.63
1:C:209:ILE:HG22	1:C:210:THR:N	2.11	0.63
1:B:29:ILE:HD13	1:B:105:ARG:HE	1.63	0.63
1:A:167:GLY:HA2	2:A:301:BNG:H1'2	1.79	0.63
1:D:166:LEU:O	1:D:169:SER:N	2.33	0.61
1:A:43:THR:O	1:A:47:LEU:HG	2.00	0.61
1:A:53:ILE:O	1:A:57:ILE:HD12	2.00	0.61
1:D:37:ASP:HB3	1:D:41:LEU:N	2.15	0.61
1:B:147:TYR:CD1	1:B:203:PHE:HB2	2.36	0.61
1:C:53:ILE:HG22	1:C:54:PHE:N	2.14	0.61
1:A:35:GLU:OE1	1:A:36:LEU:N	2.29	0.61
1:A:218:ILE:HG22	1:B:216:ILE:CD1	2.30	0.60
1:D:87:ILE:HG21	1:D:107:PHE:HD2	1.66	0.60
1:B:22:ILE:HG23	1:B:111:ARG:HH21	1.65	0.60
4:B:301:PX4:H52	4:B:301:PX4:H61	1.83	0.60
1:A:25:ASN:HB2	1:A:44:ILE:CG2	2.31	0.60
1:D:55:PHE:HB3	1:D:85:VAL:CG2	2.30	0.60
1:D:29:ILE:HD12	1:D:105:ARG:HH22	1.66	0.59
1:C:22:ILE:HG21	1:C:112:LEU:HG	1.82	0.59
1:C:14:PHE:O	1:C:18:VAL:HG23	2.02	0.59
1:D:154:LEU:HG	1:D:195:TRP:CH2	2.37	0.59
1:B:47:LEU:O	1:B:50:GLY:N	2.36	0.59
1:B:98:PHE:CB	1:B:99:LEU:HB2	2.31	0.59
1:C:98:PHE:CD1	1:C:99:LEU:HD23	2.37	0.59
1:C:57:ILE:O	1:C:59:ILE:N	2.35	0.59
1:A:25:ASN:HB2	1:A:44:ILE:HG22	1.84	0.59
1:C:29:ILE:CG2	1:C:105:ARG:CZ	2.80	0.59
1:C:9:LYS:HZ2	1:C:55:PHE:HE2	1.51	0.59
1:C:159:ASP:OD2	1:C:162:ARG:HD3	2.03	0.58
1:A:153:ILE:HG12	1:D:102:ARG:HD3	1.83	0.58
4:B:301:PX4:H59	4:B:301:PX4:H51	1.85	0.58
1:C:116:ILE:HB	1:C:119:LEU:HD12	1.85	0.58
1:A:227:LYS:C	1:A:228:LEU:HG	2.24	0.58
1:B:92:ILE:HD12	1:B:108:ARG:NH2	2.19	0.58
1:A:28:LEU:O	1:A:30:GLY:HA2	2.03	0.58
1:B:211:ILE:HD13	4:B:301:PX4:H48	1.85	0.58
1:D:219:LEU:O	1:D:219:LEU:HD13	2.03	0.58
1:A:80:PHE:CE2	1:A:84:ILE:HD11	2.39	0.58
1:D:19:VAL:HG22	1:D:116:ILE:HD11	1.86	0.58
1:A:33:THR:HG22	1:A:41:LEU:HD22	1.86	0.58

Continued on next page...

Continued from previous page...

Atom-1	Atom-2	Interatomic distance (Å)	Clash overlap (Å)
1:A:80:PHE:CE2	1:A:84:ILE:HD12	2.38	0.57
1:A:136:VAL:HG21	1:A:214:LEU:HG	1.86	0.57
1:C:52:THR:O	1:C:56:VAL:HB	2.05	0.57
1:C:147:TYR:CE1	1:C:203:PHE:HB2	2.39	0.57
1:D:140:LEU:HD11	1:D:211:ILE:HD11	1.87	0.57
1:C:13:ILE:O	1:C:16:PHE:N	2.38	0.57
1:B:99:LEU:HD23	1:B:99:LEU:O	2.05	0.57
1:B:28:LEU:O	1:B:29:ILE:HG13	2.05	0.57
1:C:21:ILE:HD13	1:C:47:LEU:HB3	1.87	0.57
1:B:25:ASN:OD1	1:B:45:HIS:HA	2.05	0.57
1:C:90:ILE:O	1:C:108:ARG:NH2	2.38	0.56
1:D:28:LEU:O	1:D:29:ILE:HD13	2.05	0.56
1:B:94:ASN:C	1:B:96:SER:N	2.59	0.56
1:C:209:ILE:CG2	1:C:210:THR:N	2.68	0.56
1:D:117:PRO:HD2	1:D:118:GLU:OE1	2.06	0.56
1:B:225:GLN:C	1:B:226:LYS:HG2	2.26	0.56
1:D:219:LEU:O	1:D:219:LEU:HD22	2.06	0.56
1:A:189:MET:HA	1:A:189:MET:HE2	1.88	0.56
1:D:52:THR:HG22	1:D:111:ARG:NH1	2.20	0.55
1:A:220:VAL:HG12	1:A:221:ASP:N	2.21	0.55
1:B:193:TYR:HB3	1:B:195:TRP:NE1	2.21	0.55
1:C:108:ARG:O	1:C:111:ARG:NE	2.36	0.55
1:D:103:LEU:N	1:D:103:LEU:HD22	2.11	0.55
1:D:119:LEU:O	1:D:123:ILE:HG13	2.05	0.55
1:A:3:PRO:O	1:A:7:SER:HB3	2.06	0.55
1:D:189:MET:O	1:D:196:SER:OG	2.25	0.55
1:A:25:ASN:ND2	1:A:48:ASP:CG	2.60	0.55
2:A:301:BNG:O3	1:B:194:TRP:HB2	2.06	0.55
1:C:98:PHE:HD1	1:C:99:LEU:HD23	1.70	0.55
1:A:196:SER:O	1:A:197:TRP:C	2.45	0.55
1:B:92:ILE:O	1:B:92:ILE:HG23	2.05	0.55
1:D:149:THR:O	1:D:150:MET:C	2.45	0.54
1:D:186:MET:HG3	1:D:200:PHE:CD1	2.43	0.54
1:B:68:GLN:O	1:B:70:ALA:N	2.38	0.54
1:D:221:ASP:O	1:D:224:ILE:HB	2.07	0.54
1:A:226:LYS:HG3	1:A:227:LYS:CD	2.36	0.54
1:D:100:VAL:O	1:D:104:LEU:HG	2.07	0.54
1:D:58:GLU:OE1	1:D:62:ARG:NE	2.32	0.54
1:A:202:SER:O	1:A:206:ILE:HG12	2.08	0.54
1:C:84:ILE:HG22	1:C:85:VAL:N	2.23	0.54
1:A:102:ARG:CZ	1:B:153:ILE:HG12	2.37	0.54

Continued on next page...

Continued from previous page...

Atom-1	Atom-2	Interatomic distance (Å)	Clash overlap (Å)
1:B:18:VAL:O	1:B:22:ILE:HG13	2.07	0.54
1:C:39:LEU:O	1:C:43:THR:HG23	2.08	0.54
1:B:186:MET:HG3	1:B:200:PHE:CD1	2.43	0.53
1:A:29:ILE:HD12	1:A:105:ARG:HD3	1.90	0.53
1:B:33:THR:C	1:B:35:GLU:N	2.59	0.53
1:C:150:MET:O	1:C:154:LEU:HB2	2.07	0.53
1:D:218:ILE:O	1:D:220:VAL:N	2.41	0.53
1:A:178:THR:HB	1:B:179:LEU:HD13	1.91	0.53
1:A:218:ILE:O	1:A:221:ASP:HB2	2.09	0.53
1:C:209:ILE:HG22	1:C:210:THR:HG22	1.90	0.53
1:D:28:LEU:C	1:D:29:ILE:HD13	2.29	0.53
1:A:107:PHE:O	1:A:110:LEU:HB2	2.08	0.53
1:A:11:ASN:O	1:A:15:GLN:HG3	2.08	0.53
1:D:29:ILE:HD11	1:D:105:ARG:HH12	1.72	0.53
1:D:42:GLU:O	1:D:45:HIS:HB2	2.08	0.53
1:B:218:ILE:O	1:B:222:VAL:HG23	2.08	0.53
1:A:216:ILE:HD13	1:D:218:ILE:HG22	1.91	0.53
1:A:46:LEU:C	1:A:46:LEU:HD13	2.29	0.53
1:C:33:THR:O	1:C:35:GLU:N	2.42	0.53
1:D:29:ILE:CD1	1:D:105:ARG:HH22	2.22	0.53
1:D:83:VAL:O	1:D:87:ILE:HG13	2.09	0.53
1:D:177:LEU:HD22	1:D:177:LEU:O	2.09	0.52
1:C:57:ILE:O	1:C:58:GLU:C	2.48	0.52
1:A:58:GLU:HG3	1:A:59:ILE:N	2.24	0.52
1:C:142:ILE:O	1:C:146:ILE:HG13	2.09	0.52
1:A:46:LEU:HD13	1:A:46:LEU:O	2.10	0.52
1:B:55:PHE:CZ	1:B:115:VAL:HG22	2.45	0.52
1:C:104:LEU:O	1:C:108:ARG:HG3	2.10	0.52
1:C:135:PHE:O	1:C:136:VAL:C	2.48	0.52
1:D:54:PHE:O	1:D:54:PHE:CG	2.62	0.52
1:A:219:LEU:HA	1:B:216:ILE:HD13	1.92	0.52
1:A:35:GLU:CD	1:A:36:LEU:H	2.12	0.52
1:C:86:ALA:O	1:C:89:LEU:HB2	2.10	0.52
1:A:117:PRO:O	1:A:120:LYS:HB2	2.10	0.51
1:C:144:LEU:HD23	1:C:203:PHE:HE1	1.74	0.51
1:A:101:LEU:O	1:A:104:LEU:HB2	2.10	0.51
1:A:116:ILE:O	1:A:117:PRO:C	2.48	0.51
1:A:146:ILE:HG22	1:A:150:MET:SD	2.50	0.51
1:C:147:TYR:OH	1:C:202:SER:OG	2.23	0.51
1:C:192:ILE:HG22	1:C:193:TYR:CE1	2.45	0.51
1:A:35:GLU:OE1	1:A:36:LEU:HB2	2.11	0.51

Continued on next page...

Continued from previous page...

Atom-1	Atom-2	Interatomic distance (Å)	Clash overlap (Å)
1:A:36:LEU:O	1:A:37:ASP:C	2.48	0.51
1:C:29:ILE:O	1:C:29:ILE:CG1	2.55	0.51
1:D:98:PHE:CZ	1:D:102:ARG:HD2	2.46	0.51
1:A:24:LEU:CD1	1:A:28:LEU:HD11	2.40	0.51
1:A:59:ILE:O	1:A:60:LEU:C	2.45	0.51
1:A:225:GLN:O	1:A:226:LYS:HD3	2.10	0.51
1:C:218:ILE:HD12	1:D:212:LEU:CD2	2.41	0.51
1:D:218:ILE:C	1:D:220:VAL:H	2.14	0.51
1:B:148:ALA:HB2	1:B:173:LEU:HD12	1.92	0.50
1:B:205:ILE:O	1:B:209:ILE:HG13	2.10	0.50
1:B:212:LEU:CD1	4:B:301:PX4:H69	2.41	0.50
1:A:210:THR:HB	1:D:126:ILE:CD1	2.41	0.50
1:D:17:THR:O	1:D:20:SER:HB2	2.11	0.50
1:C:223:VAL:O	1:C:226:LYS:HB2	2.10	0.50
1:B:77:TRP:HA	1:B:80:PHE:HB3	1.92	0.50
1:C:132:ARG:NH1	1:C:132:ARG:CB	2.58	0.50
1:A:148:ALA:O	1:A:152:ALA:HB2	2.12	0.50
1:A:5:PHE:C	1:A:7:SER:N	2.65	0.50
1:C:36:LEU:HD22	1:C:37:ASP:H	1.77	0.50
1:D:29:ILE:CD1	1:D:105:ARG:HH12	2.24	0.50
1:B:92:ILE:HD12	1:B:108:ARG:HH21	1.75	0.50
1:C:168:ILE:HD11	2:C:302:BNG:O6	2.09	0.50
1:C:224:ILE:O	1:C:226:LYS:N	2.45	0.50
1:D:213:ASN:OD1	1:D:213:ASN:C	2.50	0.50
1:D:37:ASP:OD1	1:D:40:PHE:HB2	2.11	0.50
1:A:167:GLY:HA3	2:A:301:BNG:H62	1.93	0.50
1:B:111:ARG:O	1:B:115:VAL:HG23	2.12	0.50
1:A:158:ASP:OD1	1:A:193:TYR:OH	2.27	0.49
1:B:131:ARG:H	1:B:131:ARG:HD2	1.77	0.49
1:A:116:ILE:O	1:A:118:GLU:N	2.44	0.49
1:D:139:LEU:HD12	1:D:139:LEU:O	2.12	0.49
1:C:102:ARG:HD2	1:D:153:ILE:CD1	2.38	0.49
1:C:166:LEU:HD13	1:C:166:LEU:C	2.32	0.49
1:A:102:ARG:NH2	1:B:153:ILE:HG12	2.27	0.49
1:B:136:VAL:HG21	1:B:214:LEU:HG	1.94	0.49
1:B:225:GLN:O	1:B:226:LYS:HG2	2.11	0.49
1:A:11:ASN:HB3	1:A:14:PHE:HB3	1.94	0.49
1:D:165:ASP:H	1:D:168:ILE:HD11	1.77	0.49
1:A:155:PHE:CG	1:A:189:MET:HG2	2.47	0.49
1:D:188:PRO:HB2	1:D:189:MET:HE3	1.95	0.49
1:D:79:ILE:O	1:D:83:VAL:HG23	2.13	0.49

Continued on next page...

Continued from previous page...

Atom-1	Atom-2	Interatomic distance (Å)	Clash overlap (Å)
1:B:69:LYS:O	1:B:70:ALA:HB2	2.13	0.49
1:B:39:LEU:O	1:B:39:LEU:HD13	2.12	0.49
1:D:167:GLY:O	1:D:171:ILE:HD12	2.13	0.49
1:A:23:ILE:O	1:A:26:ALA:HB3	2.13	0.48
1:A:56:VAL:HG23	1:A:85:VAL:HG12	1.95	0.48
1:C:177:LEU:CD2	1:C:177:LEU:C	2.76	0.48
1:B:52:THR:HG22	1:B:111:ARG:NH1	2.28	0.48
1:D:20:SER:O	1:D:24:LEU:HB2	2.13	0.48
1:D:36:LEU:O	1:D:37:ASP:C	2.52	0.48
1:C:192:ILE:HG22	1:C:193:TYR:CD1	2.48	0.48
1:D:154:LEU:HG	1:D:195:TRP:HH2	1.77	0.48
1:D:213:ASN:OD1	1:D:214:LEU:N	2.46	0.48
1:A:145:TYR:CD2	1:D:109:VAL:HG11	2.48	0.48
1:C:36:LEU:O	1:C:38:PRO:HD3	2.12	0.48
1:D:140:LEU:HD11	1:D:211:ILE:CD1	2.43	0.48
1:A:8:LEU:HD23	1:A:8:LEU:HA	1.74	0.48
1:C:177:LEU:HD23	1:C:177:LEU:O	2.13	0.48
1:A:187:LEU:HB2	1:A:188:PRO:HD3	1.96	0.48
1:A:84:ILE:HD11	1:A:110:LEU:HD13	1.95	0.48
1:A:182:TRP:HH2	1:A:201:PHE:HE2	1.60	0.48
1:D:119:LEU:HD23	1:D:122:ILE:HD12	1.96	0.48
1:D:144:LEU:CD2	1:D:203:PHE:HE1	2.27	0.48
1:A:135:PHE:O	1:A:138:LEU:HB2	2.14	0.48
1:A:25:ASN:O	1:A:25:ASN:ND2	2.46	0.48
1:A:82:THR:O	1:A:86:ALA:HB2	2.13	0.48
1:C:76:GLY:HA2	1:C:79:ILE:HD12	1.94	0.48
1:B:83:VAL:HG13	1:B:87:ILE:HD12	1.95	0.48
1:C:29:ILE:HG21	1:C:105:ARG:NE	2.29	0.48
1:C:57:ILE:C	1:C:59:ILE:N	2.65	0.48
1:A:87:ILE:HD13	1:A:107:PHE:CD1	2.49	0.47
1:A:106:ILE:O	1:A:109:VAL:HG12	2.13	0.47
1:B:98:PHE:HB3	1:B:99:LEU:CB	2.35	0.47
1:D:43:THR:O	1:D:47:LEU:CB	2.63	0.47
1:B:154:LEU:HD23	1:B:195:TRP:CH2	2.49	0.47
1:B:216:ILE:O	1:B:220:VAL:HG22	2.13	0.47
1:C:126:ILE:CD1	1:D:210:THR:HA	2.45	0.47
1:A:80:PHE:CZ	1:A:84:ILE:HD11	2.47	0.47
1:A:177:LEU:CD1	1:A:207:CYS:HB3	2.46	0.46
1:A:177:LEU:HD13	1:A:207:CYS:SG	2.54	0.46
1:B:98:PHE:HB3	1:B:99:LEU:HD12	1.98	0.46
1:C:97:SER:O	1:C:101:LEU:HB2	2.15	0.46

Continued on next page...

Continued from previous page...

Atom-1	Atom-2	Interatomic distance (Å)	Clash overlap (Å)
1:D:24:LEU:HD12	1:D:24:LEU:HA	1.75	0.46
1:D:94:ASN:C	1:D:96:SER:N	2.68	0.46
1:D:166:LEU:O	1:D:167:GLY:C	2.53	0.46
1:D:144:LEU:HD23	1:D:203:PHE:HE1	1.80	0.46
1:B:13:ILE:O	1:B:17:THR:HG22	2.14	0.46
1:A:182:TRP:CH2	1:A:201:PHE:HE2	2.34	0.46
1:A:24:LEU:O	1:A:26:ALA:N	2.39	0.46
1:C:120:LYS:O	1:C:124:GLU:HG3	2.16	0.46
1:C:212:LEU:O	1:C:216:ILE:HD12	2.15	0.46
1:A:182:TRP:HH2	1:A:201:PHE:CE2	2.33	0.46
1:A:24:LEU:C	1:A:26:ALA:H	2.19	0.46
1:B:217:ALA:O	1:B:220:VAL:CG2	2.63	0.46
1:C:36:LEU:HD23	1:C:36:LEU:HA	1.63	0.46
1:C:57:ILE:HG23	1:C:60:LEU:HD12	1.98	0.46
1:A:225:GLN:HG2	1:A:225:GLN:O	2.14	0.46
1:A:2:THR:N	1:A:3:PRO:HD3	2.31	0.46
1:C:53:ILE:O	1:C:54:PHE:C	2.54	0.46
1:A:113:ILE:HA	1:A:119:LEU:HD12	1.97	0.46
1:A:144:LEU:CD2	1:A:203:PHE:CZ	2.99	0.46
1:D:56:VAL:CG2	1:D:89:LEU:HD13	2.38	0.46
1:B:5:PHE:C	1:B:7:SER:H	2.20	0.46
1:A:144:LEU:HD23	1:A:203:PHE:CE1	2.51	0.45
1:A:226:LYS:HG3	1:A:227:LYS:CE	2.46	0.45
1:B:62:ARG:HH11	1:B:62:ARG:CB	2.28	0.45
1:C:56:VAL:HG23	1:C:85:VAL:CG1	2.46	0.45
1:D:37:ASP:HA	1:D:38:PRO:HD2	1.86	0.45
1:A:195:TRP:CE3	1:A:195:TRP:C	2.90	0.45
1:B:159:ASP:OD2	1:B:162:ARG:HG3	2.17	0.45
1:D:200:PHE:O	1:D:203:PHE:HB3	2.17	0.45
1:C:28:LEU:CG	1:C:29:ILE:N	2.53	0.45
1:B:225:GLN:HG2	1:B:225:GLN:O	2.17	0.45
1:D:37:ASP:CG	1:D:40:PHE:HB2	2.37	0.45
1:D:98:PHE:CG	1:D:98:PHE:O	2.69	0.45
1:D:214:LEU:CD2	1:D:218:ILE:HG13	2.47	0.45
2:A:301:BNG:O2	1:B:197:TRP:NE1	2.21	0.45
1:B:21:ILE:O	1:B:25:ASN:HB2	2.16	0.45
1:C:154:LEU:HG	1:C:195:TRP:CH2	2.52	0.45
1:D:144:LEU:CD2	1:D:203:PHE:CE1	3.00	0.45
1:A:144:LEU:CD2	1:A:203:PHE:HZ	2.30	0.45
1:A:77:TRP:O	1:A:81:ASP:HB2	2.16	0.45
1:B:60:LEU:HA	1:B:60:LEU:HD22	1.73	0.44

Continued on next page...

Continued from previous page...

Atom-1	Atom-2	Interatomic distance (Å)	Clash overlap (Å)
1:C:10:ASP:HB3	1:C:11:ASN:H	1.58	0.44
1:C:193:TYR:O	1:C:196:SER:HB2	2.17	0.44
1:C:33:THR:C	1:C:35:GLU:N	2.70	0.44
1:A:189:MET:HE2	1:A:192:ILE:HD12	1.99	0.44
1:B:36:LEU:HD23	1:B:37:ASP:N	2.27	0.44
1:C:135:PHE:O	1:C:138:LEU:N	2.50	0.44
1:C:40:PHE:HE2	1:C:44:ILE:HD11	1.83	0.44
1:C:55:PHE:HD1	1:C:59:ILE:HG13	1.82	0.44
1:D:97:SER:O	1:D:98:PHE:HB3	2.18	0.44
1:A:43:THR:CG2	1:A:47:LEU:HD21	2.43	0.44
1:A:25:ASN:HD22	1:A:48:ASP:CG	2.21	0.44
1:A:48:ASP:O	1:A:51:ILE:HB	2.16	0.44
1:A:51:ILE:O	1:A:54:PHE:HB3	2.17	0.44
1:A:51:ILE:HG22	1:A:55:PHE:CE2	2.52	0.44
1:B:159:ASP:OD1	1:B:161:SER:HB2	2.16	0.44
1:B:83:VAL:HG13	1:B:87:ILE:CD1	2.48	0.44
1:D:138:LEU:O	1:D:141:PHE:HB3	2.18	0.44
1:D:121:GLN:O	1:D:122:ILE:C	2.55	0.44
1:D:224:ILE:HG22	1:D:225:GLN:N	2.33	0.44
1:A:101:LEU:HD23	1:A:101:LEU:HA	1.72	0.44
1:A:225:GLN:O	1:A:226:LYS:CB	2.66	0.44
1:B:22:ILE:HG23	1:B:111:ARG:NH2	2.31	0.44
1:B:29:ILE:HA	1:B:30:GLY:HA2	1.70	0.44
1:C:17:THR:O	1:C:21:ILE:HG13	2.18	0.44
1:D:147:TYR:CE1	1:D:203:PHE:HB2	2.52	0.44
1:D:37:ASP:O	1:D:38:PRO:C	2.56	0.44
1:A:113:ILE:HD13	1:A:123:ILE:CD1	2.47	0.44
1:A:225:GLN:C	1:A:226:LYS:HG2	2.38	0.44
1:C:139:LEU:HA	1:C:139:LEU:HD12	1.73	0.44
1:C:218:ILE:HD12	1:D:212:LEU:HD21	1.98	0.44
1:B:94:ASN:C	1:B:96:SER:H	2.21	0.44
1:B:40:PHE:CD2	1:B:41:LEU:HD23	2.52	0.43
1:C:28:LEU:HD12	1:C:33:THR:HG21	1.98	0.43
1:C:80:PHE:C	1:C:80:PHE:CD2	2.90	0.43
1:A:101:LEU:C	1:A:103:LEU:N	2.70	0.43
1:A:55:PHE:CZ	1:A:115:VAL:HG22	2.53	0.43
1:B:227:LYS:O	1:B:228:LEU:HB2	2.18	0.43
1:A:177:LEU:HD11	1:A:207:CYS:HB3	2.01	0.43
1:D:88:SER:CB	1:D:111:ARG:HD3	2.48	0.43
1:A:113:ILE:HD13	1:A:123:ILE:HD11	2.00	0.43
1:C:29:ILE:CG2	1:C:105:ARG:NH2	2.81	0.43

Continued on next page...

Continued from previous page...

Atom-1	Atom-2	Interatomic distance (Å)	Clash overlap (Å)
1:A:126:ILE:O	1:A:129:SER:HB2	2.18	0.43
1:D:159:ASP:HB3	1:D:163:TRP:HD1	1.84	0.43
1:A:144:LEU:HD21	1:A:203:PHE:HZ	1.83	0.43
1:A:44:ILE:HD13	1:A:44:ILE:HA	1.86	0.43
1:B:219:LEU:O	1:B:223:VAL:HG23	2.19	0.43
1:C:144:LEU:HD23	1:C:203:PHE:CE1	2.54	0.43
1:A:212:LEU:HD21	1:D:218:ILE:HD12	2.01	0.43
1:B:30:GLY:N	1:B:32:THR:HG22	2.33	0.43
1:C:154:LEU:HD13	1:C:154:LEU:HA	1.76	0.43
1:D:224:ILE:CG2	1:D:225:GLN:N	2.81	0.43
1:A:186:MET:HG3	1:A:200:PHE:CD1	2.54	0.42
1:B:126:ILE:HD13	1:C:210:THR:HB	2.01	0.42
1:B:38:PRO:O	1:B:42:GLU:HG3	2.19	0.42
1:A:83:VAL:O	1:A:87:ILE:HG13	2.20	0.42
1:C:12:ARG:NH1	1:C:15:GLN:OE1	2.47	0.42
1:D:116:ILE:HA	1:D:117:PRO:HD3	1.89	0.42
1:C:159:ASP:HB2	1:C:189:MET:HE1	2.01	0.42
1:A:19:VAL:HG22	1:A:112:LEU:HD22	2.01	0.42
1:A:13:ILE:CD1	1:A:13:ILE:N	2.82	0.42
1:B:211:ILE:CD1	4:B:301:PX4:H48	2.50	0.42
1:C:144:LEU:CD2	1:C:203:PHE:CE1	3.02	0.42
1:C:89:LEU:HD23	1:C:89:LEU:HA	1.80	0.42
1:A:41:LEU:H	1:A:41:LEU:HG	1.50	0.42
1:C:178:THR:HB	1:D:179:LEU:HD13	2.01	0.42
1:D:214:LEU:C	1:D:214:LEU:CD2	2.88	0.42
1:A:118:GLU:N	1:A:118:GLU:OE1	2.52	0.42
1:A:37:ASP:HB2	1:A:40:PHE:CB	2.45	0.42
1:A:81:ASP:OD2	1:A:114:SER:HB3	2.19	0.42
1:B:220:VAL:O	1:B:224:ILE:HD12	2.20	0.42
1:B:29:ILE:HD13	1:B:105:ARG:NE	2.31	0.42
1:D:195:TRP:O	1:D:196:SER:C	2.56	0.42
1:D:87:ILE:O	1:D:90:ILE:HG22	2.20	0.42
1:B:201:PHE:N	1:B:201:PHE:CD2	2.88	0.42
1:B:56:VAL:HG21	1:B:89:LEU:HG	2.02	0.42
1:D:59:ILE:HD11	1:D:81:ASP:HB3	2.02	0.42
1:A:138:LEU:O	1:A:141:PHE:HB3	2.20	0.42
1:C:186:MET:HG3	1:C:200:PHE:CD1	2.55	0.42
1:C:9:LYS:NZ	1:C:55:PHE:HE2	2.17	0.42
1:A:4:PHE:O	1:A:8:LEU:HB2	2.19	0.42
1:B:116:ILE:HG22	1:B:116:ILE:O	2.19	0.42
1:C:29:ILE:HG21	1:C:105:ARG:NH2	2.35	0.42

Continued on next page...

Continued from previous page...

Atom-1	Atom-2	Interatomic distance (Å)	Clash overlap (Å)
1:C:41:LEU:O	1:C:42:GLU:C	2.58	0.42
1:D:15:GLN:O	1:D:18:VAL:HG23	2.20	0.42
1:B:149:THR:O	1:B:150:MET:C	2.58	0.42
1:B:94:ASN:O	1:B:96:SER:N	2.53	0.42
1:D:128:GLU:HA	1:D:131:ARG:HH11	1.84	0.42
1:D:149:THR:O	1:D:151:GLY:N	2.53	0.42
1:D:226:LYS:O	1:D:227:LYS:CB	2.68	0.42
1:D:43:THR:O	1:D:47:LEU:HB2	2.19	0.42
1:D:42:GLU:HA	1:D:45:HIS:HB2	2.02	0.42
1:A:60:LEU:O	1:A:64:ILE:HG13	2.19	0.41
1:A:90:ILE:HA	1:A:91:PRO:HD3	1.91	0.41
1:C:13:ILE:CD1	1:C:14:PHE:H	2.33	0.41
1:C:33:THR:C	1:C:35:GLU:H	2.24	0.41
1:C:76:GLY:CA	1:C:79:ILE:HD12	2.50	0.41
1:D:147:TYR:CD1	1:D:203:PHE:HB2	2.55	0.41
1:B:217:ALA:O	1:B:220:VAL:HG22	2.19	0.41
1:D:101:LEU:O	1:D:104:LEU:HB2	2.20	0.41
1:D:25:ASN:HB3	1:D:48:ASP:OD2	2.20	0.41
1:A:12:ARG:NH2	1:A:15:GLN:OE1	2.53	0.41
1:A:33:THR:HG22	1:A:41:LEU:HD13	2.01	0.41
1:B:47:LEU:O	1:B:48:ASP:C	2.59	0.41
1:B:98:PHE:HA	1:B:99:LEU:HA	1.71	0.41
1:A:36:LEU:O	1:A:38:PRO:N	2.53	0.41
1:B:39:LEU:O	1:B:43:THR:OG1	2.35	0.41
1:A:153:ILE:CG1	1:D:102:ARG:HD3	2.50	0.41
1:A:151:GLY:HA2	1:A:154:LEU:HB2	2.03	0.41
1:A:31:ALA:O	1:A:32:THR:HG23	2.20	0.41
1:B:227:LYS:HB3	1:B:227:LYS:NZ	2.35	0.41
1:B:36:LEU:O	1:B:38:PRO:HD3	2.20	0.41
1:C:154:LEU:HG	1:C:195:TRP:HH2	1.85	0.41
1:A:220:VAL:CG1	1:A:221:ASP:N	2.84	0.41
1:A:24:LEU:C	1:A:26:ALA:N	2.74	0.41
1:B:116:ILE:O	1:B:119:LEU:HB2	2.21	0.41
1:C:37:ASP:O	1:C:40:PHE:HB3	2.21	0.41
1:A:15:GLN:O	1:A:18:VAL:N	2.54	0.41
1:A:170:LEU:HB2	2:A:301:BNG:H3'1	2.02	0.41
1:B:96:SER:HB2	1:B:101:LEU:HD12	2.03	0.41
1:C:19:VAL:HG22	1:C:112:LEU:CD2	2.51	0.41
1:A:111:ARG:O	1:A:115:VAL:HG23	2.21	0.41
1:A:168:ILE:O	1:A:172:THR:HB	2.21	0.41
1:A:177:LEU:CD1	1:A:207:CYS:SG	3.09	0.41

Continued on next page...

Continued from previous page...

Atom-1	Atom-2	Interatomic distance (Å)	Clash overlap (Å)
1:D:139:LEU:O	1:D:143:ILE:HD12	2.21	0.41
1:A:8:LEU:C	1:A:10:ASP:H	2.23	0.40
1:C:147:TYR:O	1:C:199:TYR:OH	2.31	0.40
1:C:183:GLU:HB2	1:C:187:LEU:HD11	2.03	0.40
1:D:28:LEU:HA	1:D:28:LEU:HD23	1.75	0.40
1:D:87:ILE:HG22	1:D:87:ILE:O	2.21	0.40
1:B:227:LYS:CG	1:B:228:LEU:H	2.26	0.40
1:C:126:ILE:O	1:C:129:SER:HB2	2.22	0.40
1:C:98:PHE:O	1:C:102:ARG:HG3	2.20	0.40
1:D:36:LEU:HB2	1:D:37:ASP:H	1.59	0.40
1:A:155:PHE:CD2	1:A:189:MET:HG2	2.56	0.40
1:A:190:GLN:HA	1:A:196:SER:OG	2.21	0.40
1:A:214:LEU:CD2	1:A:214:LEU:C	2.90	0.40
1:D:42:GLU:CA	1:D:45:HIS:HD2	2.26	0.40
1:A:60:LEU:O	1:A:63:PHE:HB3	2.21	0.40
1:C:40:PHE:O	1:C:40:PHE:HD2	2.04	0.40
1:A:212:LEU:CD2	1:D:218:ILE:HD12	2.51	0.40
1:B:91:PRO:HB2	1:B:104:LEU:HD13	2.04	0.40
1:B:201:PHE:N	1:B:201:PHE:HD2	2.20	0.40
1:C:190:GLN:HA	1:C:196:SER:CB	2.51	0.40
1:C:197:TRP:N	1:C:197:TRP:CD1	2.89	0.40

There are no symmetry-related clashes.

5.3 Torsion angles

5.3.1 Protein backbone

In the following table, the Percentiles column shows the percent Ramachandran outliers of the chain as a percentile score with respect to all X-ray entries followed by that with respect to entries of similar resolution.

The Analysed column shows the number of residues for which the backbone conformation was analysed, and the total number of residues.

Mol	Chain	Analysed	Favoured	Allowed	Outliers	Percentiles	
1	A	204/229 (89%)	170 (83%)	27 (13%)	7 (3%)	3	17
1	B	218/229 (95%)	182 (84%)	26 (12%)	10 (5%)	2	12
1	C	193/229 (84%)	161 (83%)	20 (10%)	12 (6%)	1	7
1	D	193/229 (84%)	158 (82%)	20 (10%)	15 (8%)	1	4

Continued on next page...

Continued from previous page...

Mol	Chain	Analysed	Favoured	Allowed	Outliers	Percentiles
All	All	808/916 (88%)	671 (83%)	93 (12%)	44 (5%)	2 9

All (44) Ramachandran outliers are listed below:

Mol	Chain	Res	Type
1	A	6	SER
1	A	7	SER
1	B	29	ILE
1	B	34	TYR
1	B	78	ASN
1	C	10	ASP
1	C	225	GLN
1	D	95	ASN
1	A	226	LYS
1	B	77	TRP
1	B	89	LEU
1	B	95	ASN
1	C	13	ILE
1	C	58	GLU
1	D	16	PHE
1	D	91	PRO
1	D	94	ASN
1	D	97	SER
1	D	167	GLY
1	D	219	LEU
1	A	25	ASN
1	B	69	LYS
1	C	60	LEU
1	D	122	ILE
1	B	92	ILE
1	C	11	ASN
1	C	30	GLY
1	C	34	TYR
1	C	37	ASP
1	D	150	MET
1	B	192	ILE
1	C	29	ILE
1	C	84	ILE
1	D	37	ASP
1	D	99	LEU
1	A	26	ALA
1	B	30	GLY

Continued on next page...

Continued from previous page...

Mol	Chain	Res	Type
1	D	29	ILE
1	D	121	GLN
1	D	166	LEU
1	A	37	ASP
1	A	160	PRO
1	C	115	VAL
1	D	117	PRO

5.3.2 Protein sidechains ⓘ

In the following table, the Percentiles column shows the percent sidechain outliers of the chain as a percentile score with respect to all X-ray entries followed by that with respect to entries of similar resolution.

The Analysed column shows the number of residues for which the sidechain conformation was analysed, and the total number of residues.

Mol	Chain	Analysed	Rotameric	Outliers	Percentiles	
1	A	195/213 (92%)	157 (80%)	38 (20%)	1	5
1	B	205/213 (96%)	175 (85%)	30 (15%)	3	12
1	C	185/213 (87%)	156 (84%)	29 (16%)	2	10
1	D	185/213 (87%)	158 (85%)	27 (15%)	3	12
All	All	770/852 (90%)	646 (84%)	124 (16%)	2	9

All (124) residues with a non-rotameric sidechain are listed below:

Mol	Chain	Res	Type
1	A	2	THR
1	A	8	LEU
1	A	12	ARG
1	A	18	VAL
1	A	23	ILE
1	A	24	LEU
1	A	29	ILE
1	A	32	THR
1	A	33	THR
1	A	35	GLU
1	A	36	LEU
1	A	39	LEU
1	A	41	LEU
1	A	47	LEU

Continued on next page...

Continued from previous page...

Mol	Chain	Res	Type
1	A	52	THR
1	A	61	ILE
1	A	75	SER
1	A	81	ASP
1	A	83	VAL
1	A	89	LEU
1	A	100	VAL
1	A	103	LEU
1	A	104	LEU
1	A	111	ARG
1	A	118	GLU
1	A	154	LEU
1	A	157	ASN
1	A	162	ARG
1	A	166	LEU
1	A	168	ILE
1	A	189	MET
1	A	208	SER
1	A	210	THR
1	A	214	LEU
1	A	219	LEU
1	A	226	LYS
1	A	227	LYS
1	A	228	LEU
1	B	9	LYS
1	B	13	ILE
1	B	29	ILE
1	B	35	GLU
1	B	43	THR
1	B	44	ILE
1	B	45	HIS
1	B	52	THR
1	B	53	ILE
1	B	60	LEU
1	B	62	ARG
1	B	79	ILE
1	B	83	VAL
1	B	89	LEU
1	B	90	ILE
1	B	92	ILE
1	B	102	ARG
1	B	131	ARG

Continued on next page...

Continued from previous page...

Mol	Chain	Res	Type
1	B	132	ARG
1	B	144	LEU
1	B	154	LEU
1	B	166	LEU
1	B	168	ILE
1	B	204	ILE
1	B	210	THR
1	B	214	LEU
1	B	219	LEU
1	B	224	ILE
1	B	227	LYS
1	B	228	LEU
1	C	11	ASN
1	C	13	ILE
1	C	28	LEU
1	C	29	ILE
1	C	36	LEU
1	C	39	LEU
1	C	40	PHE
1	C	49	TYR
1	C	54	PHE
1	C	55	PHE
1	C	56	VAL
1	C	58	GLU
1	C	61	ILE
1	C	77	TRP
1	C	84	ILE
1	C	85	VAL
1	C	104	LEU
1	C	105	ARG
1	C	109	VAL
1	C	111	ARG
1	C	128	GLU
1	C	132	ARG
1	C	139	LEU
1	C	154	LEU
1	C	162	ARG
1	C	168	ILE
1	C	209	ILE
1	C	210	THR
1	C	214	LEU
1	D	14	PHE

Continued on next page...

Continued from previous page...

Mol	Chain	Res	Type
1	D	16	PHE
1	D	17	THR
1	D	29	ILE
1	D	41	LEU
1	D	46	LEU
1	D	52	THR
1	D	55	PHE
1	D	61	ILE
1	D	85	VAL
1	D	92	ILE
1	D	100	VAL
1	D	103	LEU
1	D	131	ARG
1	D	132	ARG
1	D	139	LEU
1	D	154	LEU
1	D	161	SER
1	D	177	LEU
1	D	186	MET
1	D	208	SER
1	D	210	THR
1	D	213	ASN
1	D	214	LEU
1	D	219	LEU
1	D	220	VAL
1	D	224	ILE

Some sidechains can be flipped to improve hydrogen bonding and reduce clashes. All (2) such sidechains are listed below:

Mol	Chain	Res	Type
1	B	45	HIS
1	D	45	HIS

5.3.3 RNA ⓘ

There are no RNA molecules in this entry.

5.4 Non-standard residues in protein, DNA, RNA chains ⓘ

There are no non-standard protein/DNA/RNA residues in this entry.

5.5 Carbohydrates

There are no monosaccharides in this entry.

5.6 Ligand geometry

Of 7 ligands modelled in this entry, 2 are monoatomic - leaving 5 for Mogul analysis.

In the following table, the Counts columns list the number of bonds (or angles) for which Mogul statistics could be retrieved, the number of bonds (or angles) that are observed in the model and the number of bonds (or angles) that are defined in the Chemical Component Dictionary. The Link column lists molecule types, if any, to which the group is linked. The Z score for a bond length (or angle) is the number of standard deviations the observed value is removed from the expected value. A bond length (or angle) with $|Z| > 2$ is considered an outlier worth inspection. RMSZ is the root-mean-square of all Z scores of the bond lengths (or angles).

Mol	Type	Chain	Res	Link	Bond lengths			Bond angles		
					Counts	RMSZ	# Z > 2	Counts	RMSZ	# Z > 2
4	PX4	B	301	-	34,34,45	1.14	3 (8%)	36,36,53	1.38	3 (8%)
2	BNG	C	302	-	21,21,21	0.45	0	26,26,26	0.60	0
2	BNG	A	301	-	21,21,21	0.46	0	26,26,26	0.60	0
2	BNG	C	301	-	21,21,21	0.46	0	26,26,26	0.60	0
2	BNG	A	302	-	21,21,21	0.46	0	26,26,26	0.60	0

In the following table, the Chirals column lists the number of chiral outliers, the number of chiral centers analysed, the number of these observed in the model and the number defined in the Chemical Component Dictionary. Similar counts are reported in the Torsion and Rings columns. '-' means no outliers of that kind were identified.

Mol	Type	Chain	Res	Link	Chirals	Torsions	Rings
4	PX4	B	301	-	-	19/35/35/49	-
2	BNG	C	302	-	-	4/12/32/32	0/1/1/1
2	BNG	A	301	-	-	7/12/32/32	0/1/1/1
2	BNG	C	301	-	-	4/12/32/32	0/1/1/1
2	BNG	A	302	-	-	7/12/32/32	0/1/1/1

All (3) bond length outliers are listed below:

Mol	Chain	Res	Type	Atoms	Z	Observed(Å)	Ideal(Å)
4	B	301	PX4	O5-C9	4.28	1.45	1.33
4	B	301	PX4	O7-C23	4.07	1.45	1.34
4	B	301	PX4	O7-C7	-2.35	1.43	1.47

All (3) bond angle outliers are listed below:

Mol	Chain	Res	Type	Atoms	Z	Observed(°)	Ideal(°)
4	B	301	PX4	C7-O7-C23	-4.70	111.83	117.88
4	B	301	PX4	O7-C23-C24	4.01	120.15	111.50
4	B	301	PX4	O5-C9-C10	2.65	120.22	111.91

There are no chirality outliers.

All (41) torsion outliers are listed below:

Mol	Chain	Res	Type	Atoms
4	B	301	PX4	C24-C23-O7-C7
2	C	301	BNG	C2'-C1'-O1-C1
4	B	301	PX4	O8-C23-O7-C7
2	C	302	BNG	C4-C5-C6-O6
2	C	301	BNG	C4-C5-C6-O6
2	A	302	BNG	C4-C5-C6-O6
2	C	302	BNG	O5-C5-C6-O6
2	A	302	BNG	O5-C5-C6-O6
2	A	301	BNG	C4-C5-C6-O6
2	C	301	BNG	O5-C5-C6-O6
4	B	301	PX4	C9-C10-C11-C12
4	B	301	PX4	C32-C33-C34-C35
2	A	301	BNG	O5-C5-C6-O6
2	C	302	BNG	C4'-C5'-C6'-C7'
4	B	301	PX4	C26-C27-C28-C29
2	C	301	BNG	O1-C1'-C2'-C3'
4	B	301	PX4	C28-C29-C30-C31
4	B	301	PX4	C10-C9-O5-C8
4	B	301	PX4	C31-C32-C33-C34
4	B	301	PX4	O6-C9-O5-C8
4	B	301	PX4	C14-C15-C16-C17
2	A	302	BNG	O1-C1'-C2'-C3'
4	B	301	PX4	C10-C11-C12-C13
4	B	301	PX4	C19-C20-C21-C22
4	B	301	PX4	C6-C7-C8-O5
2	A	301	BNG	C5'-C6'-C7'-C8'
2	A	301	BNG	C6'-C7'-C8'-C9'
4	B	301	PX4	C18-C19-C20-C21
4	B	301	PX4	O7-C7-C8-O5
2	A	302	BNG	C2'-C3'-C4'-C5'
2	A	302	BNG	C3'-C4'-C5'-C6'
2	A	302	BNG	C6'-C7'-C8'-C9'
2	A	302	BNG	C4'-C5'-C6'-C7'

Continued on next page...

Continued from previous page...

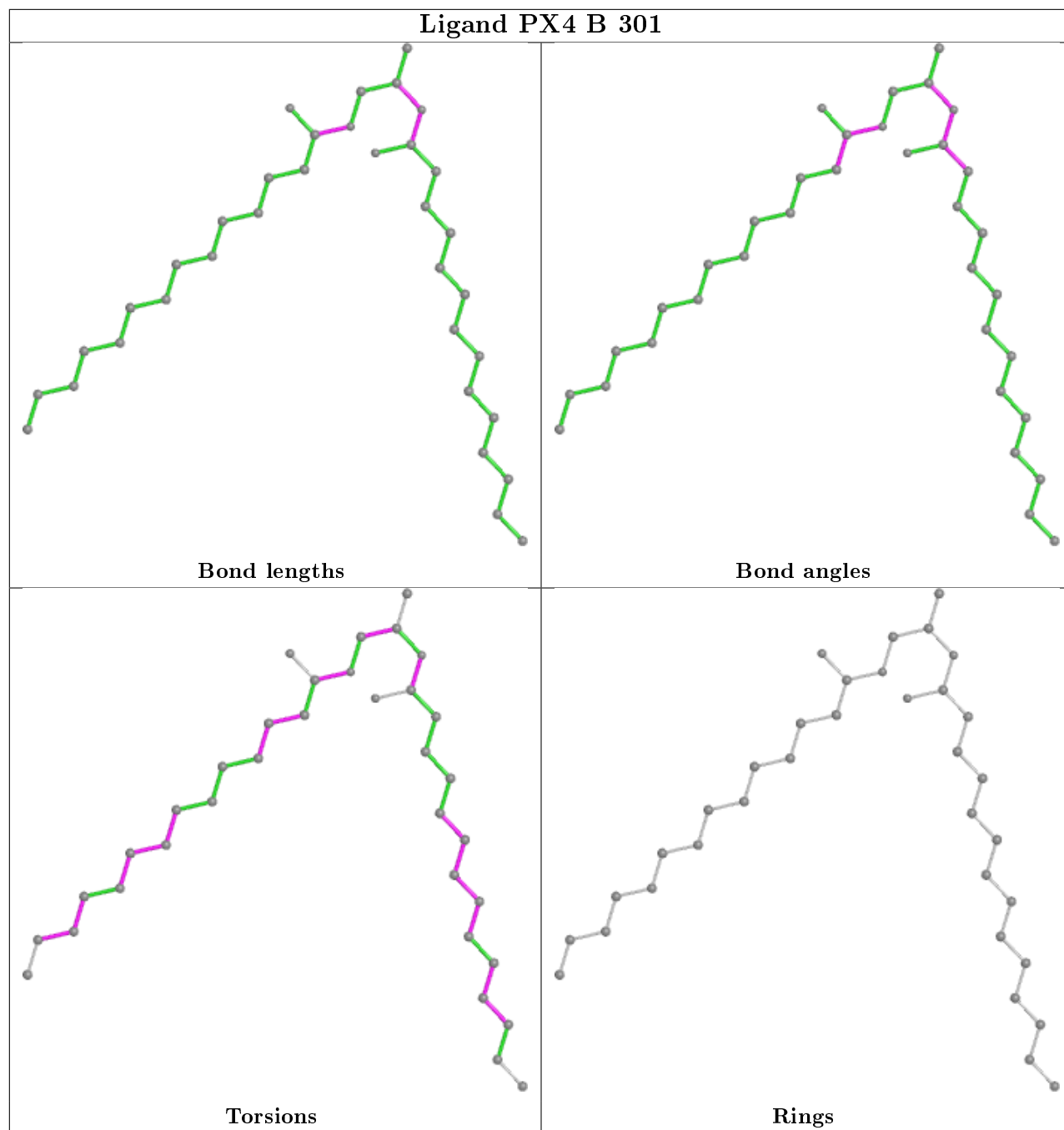
Mol	Chain	Res	Type	Atoms
2	A	301	BNG	C2'-C3'-C4'-C5'
4	B	301	PX4	C15-C16-C17-C18
4	B	301	PX4	C29-C30-C31-C32
2	C	302	BNG	C3'-C4'-C5'-C6'
4	B	301	PX4	C27-C28-C29-C30
2	A	301	BNG	C3'-C4'-C5'-C6'
2	A	301	BNG	C1'-C2'-C3'-C4'
4	B	301	PX4	C16-C17-C18-C19

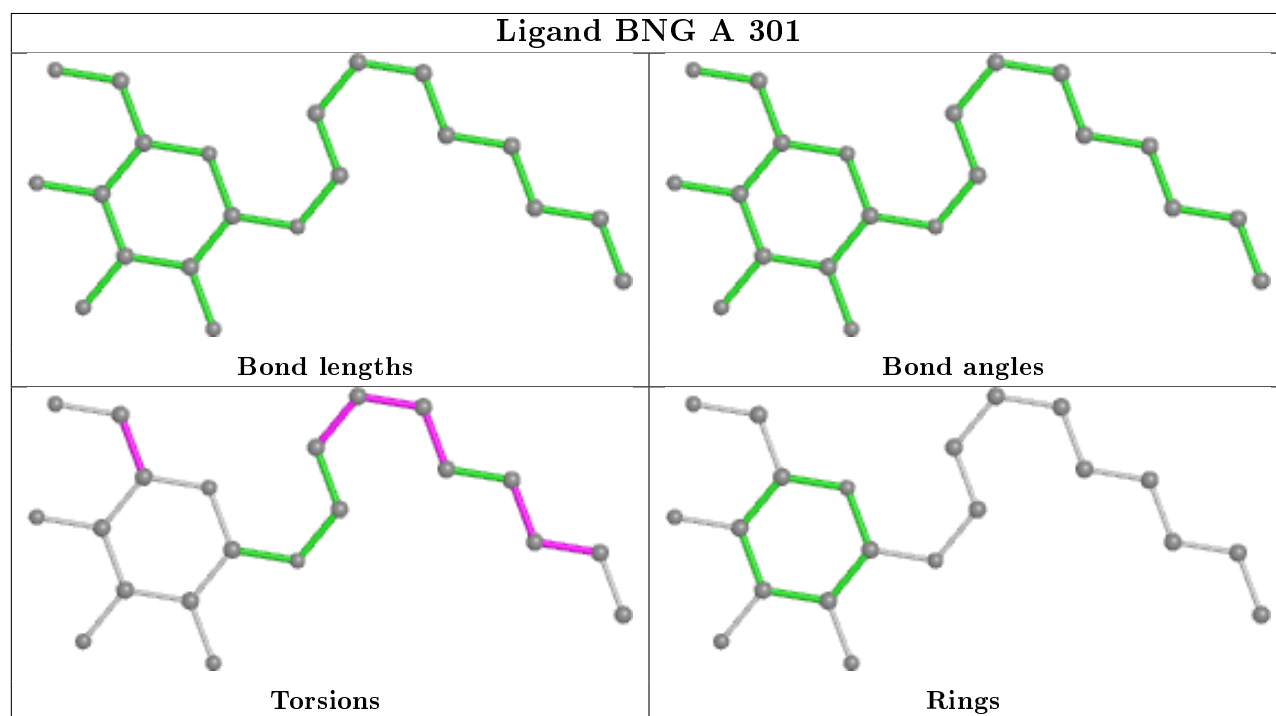
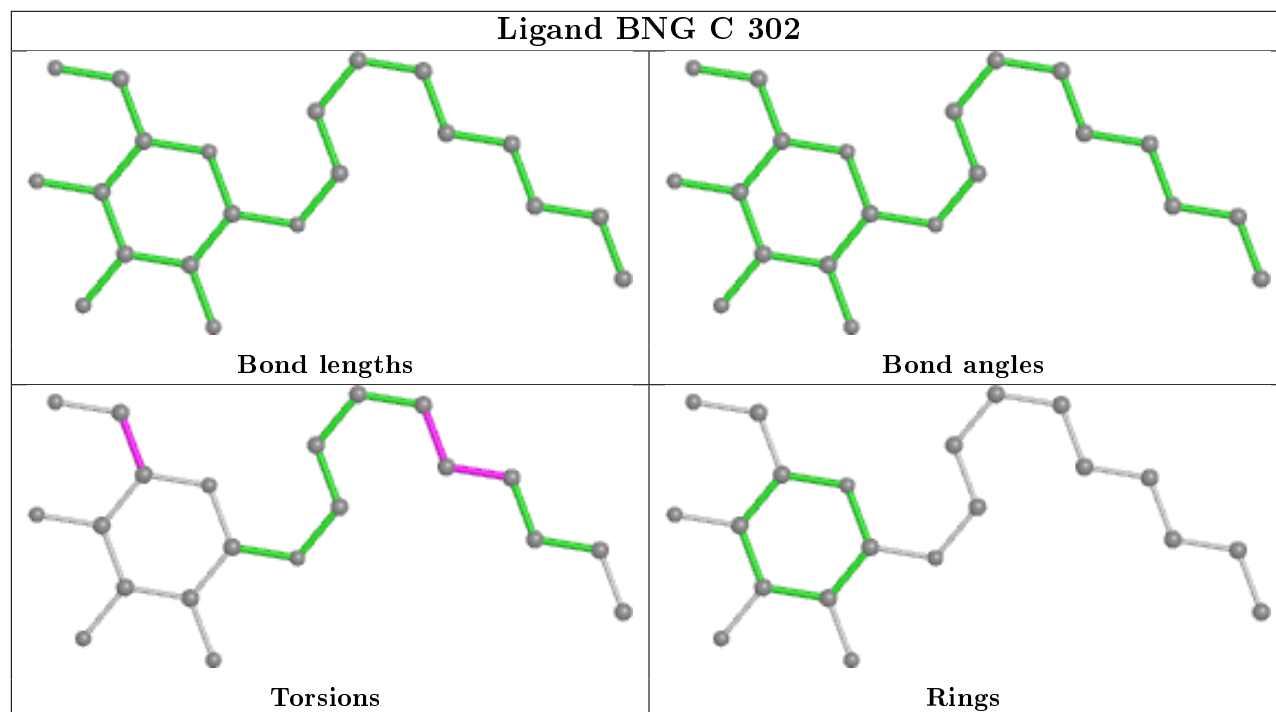
There are no ring outliers.

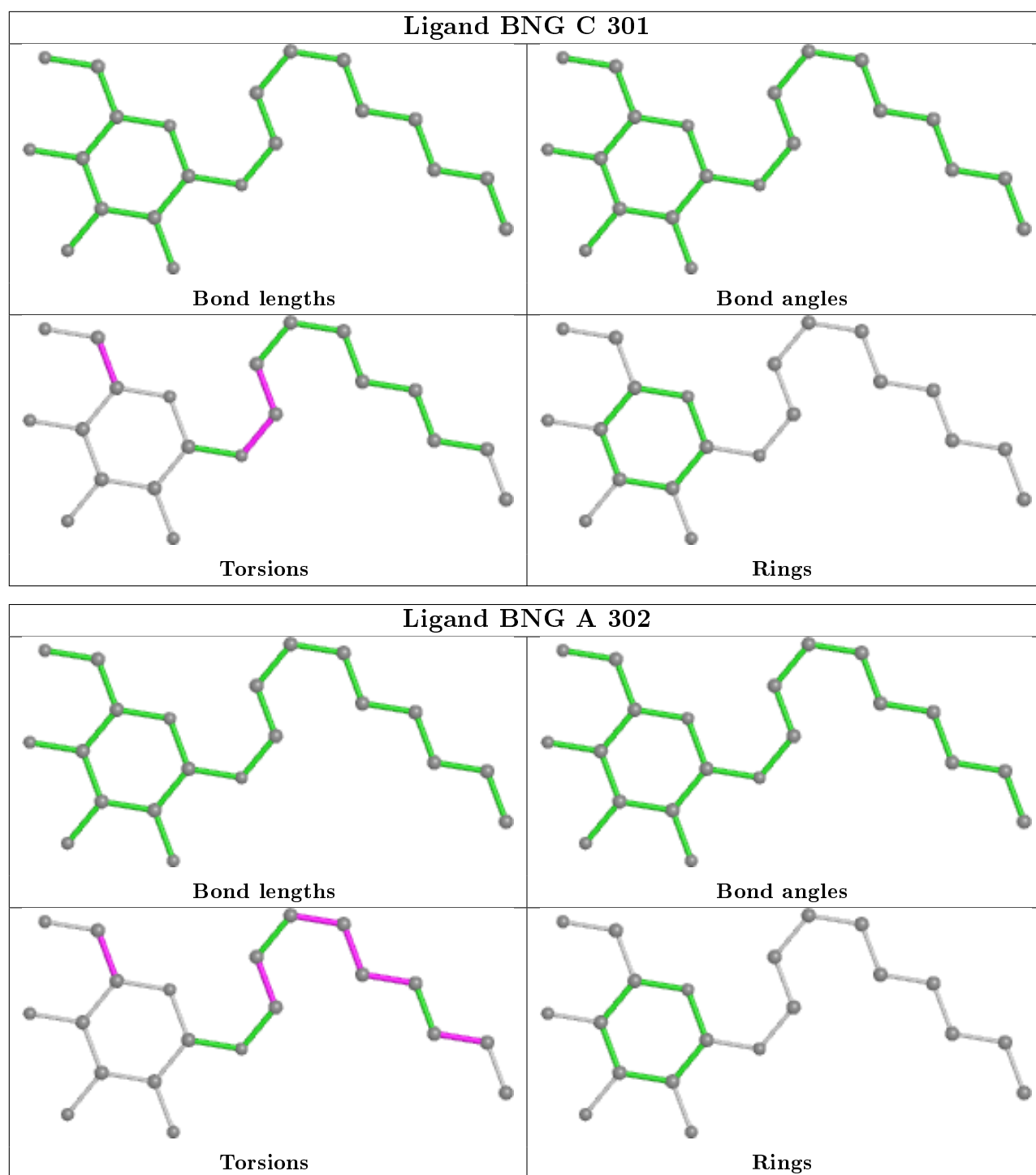
3 monomers are involved in 21 short contacts:

Mol	Chain	Res	Type	Clashes	Symm-Clashes
4	B	301	PX4	6	0
2	C	302	BNG	9	0
2	A	301	BNG	6	0

The following is a two-dimensional graphical depiction of Mogul quality analysis of bond lengths, bond angles, torsion angles, and ring geometry for all instances of the Ligand of Interest. In addition, ligands with molecular weight > 250 and outliers as shown on the validation Tables will also be included. For torsion angles, if less than 5% of the Mogul distribution of torsion angles is within 10 degrees of the torsion angle in question, then that torsion angle is considered an outlier. Any bond that is central to one or more torsion angles identified as an outlier by Mogul will be highlighted in the graph. For rings, the root-mean-square deviation (RMSD) between the ring in question and similar rings identified by Mogul is calculated over all ring torsion angles. If the average RMSD is greater than 60 degrees and the minimal RMSD between the ring in question and any Mogul-identified rings is also greater than 60 degrees, then that ring is considered an outlier. The outliers are highlighted in purple. The color gray indicates Mogul did not find sufficient equivalents in the CSD to analyse the geometry.







5.7 Other polymers [i](#)

There are no such residues in this entry.

5.8 Polymer linkage issues [i](#)

There are no chain breaks in this entry.

6 Fit of model and data [i](#)

6.1 Protein, DNA and RNA chains [i](#)

In the following table, the column labelled ‘#RSRZ> 2’ contains the number (and percentage) of RSRZ outliers, followed by percent RSRZ outliers for the chain as percentile scores relative to all X-ray entries and entries of similar resolution. The OWAB column contains the minimum, median, 95th percentile and maximum values of the occupancy-weighted average B-factor per residue. The column labelled ‘Q< 0.9’ lists the number of (and percentage) of residues with an average occupancy less than 0.9.

Mol	Chain	Analysed	<RSRZ>	#RSRZ>2	OWAB(Å ²)	Q<0.9
1	A	210/229 (91%)	-0.40	4 (1%) 66 43	43, 86, 155, 223	0
1	B	222/229 (96%)	-0.32	7 (3%) 47 24	44, 93, 168, 215	0
1	C	199/229 (86%)	-0.46	1 (0%) 91 79	50, 85, 144, 210	0
1	D	199/229 (86%)	-0.39	3 (1%) 73 51	45, 88, 174, 233	0
All	All	830/916 (90%)	-0.39	15 (1%) 68 45	43, 88, 162, 233	0

All (15) RSRZ outliers are listed below:

Mol	Chain	Res	Type	RSRZ
1	A	33	THR	3.6
1	A	34	TYR	2.9
1	A	5	PHE	2.8
1	B	90	ILE	2.7
1	B	8	LEU	2.6
1	B	5	PHE	2.5
1	D	97	SER	2.5
1	B	7	SER	2.5
1	B	25	ASN	2.4
1	A	9	LYS	2.4
1	C	97	SER	2.3
1	D	95	ASN	2.2
1	D	96	SER	2.1
1	B	10	ASP	2.1
1	B	11	ASN	2.0

6.2 Non-standard residues in protein, DNA, RNA chains [i](#)

There are no non-standard protein/DNA/RNA residues in this entry.

6.3 Carbohydrates [i](#)

There are no monosaccharides in this entry.

6.4 Ligands [i](#)

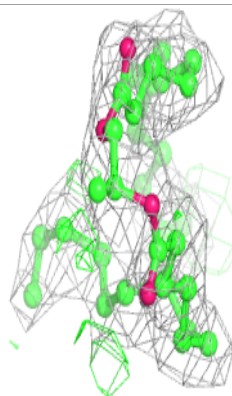
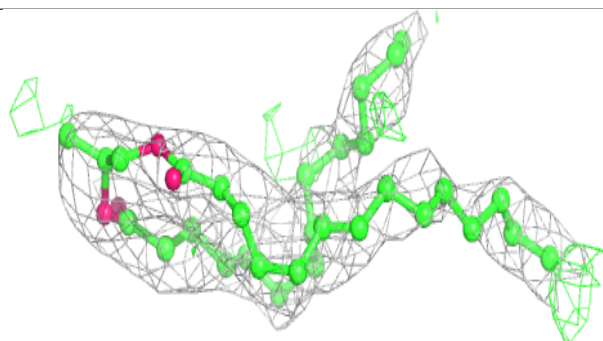
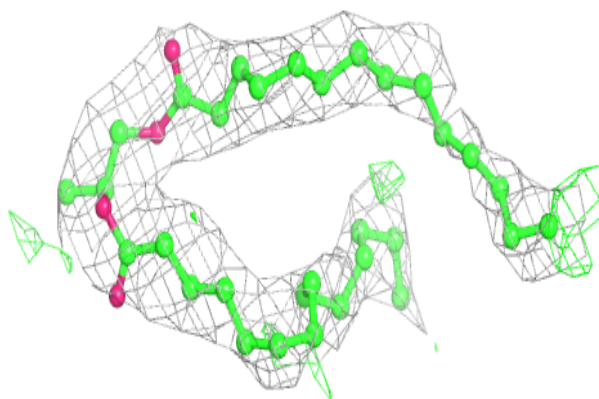
In the following table, the Atoms column lists the number of modelled atoms in the group and the number defined in the chemical component dictionary. The B-factors column lists the minimum, median, 95th percentile and maximum values of B factors of atoms in the group. The column labelled 'Q< 0.9' lists the number of atoms with occupancy less than 0.9.

Mol	Type	Chain	Res	Atoms	RSCC	RSR	B-factors(\AA^2)	Q<0.9
4	PX4	B	301	35/46	0.85	0.35	72,88,101,105	0
2	BNG	A	301	21/21	0.89	0.19	84,96,102,103	0
2	BNG	C	302	21/21	0.90	0.22	79,87,91,93	0
2	BNG	A	302	21/21	0.90	0.22	75,82,86,88	0
2	BNG	C	301	21/21	0.91	0.29	74,86,91,93	0
3	CA	A	303	1/1	0.98	0.26	87,87,87,87	0
3	CA	B	302	1/1	0.99	0.16	63,63,63,63	0

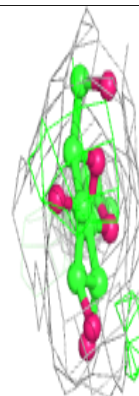
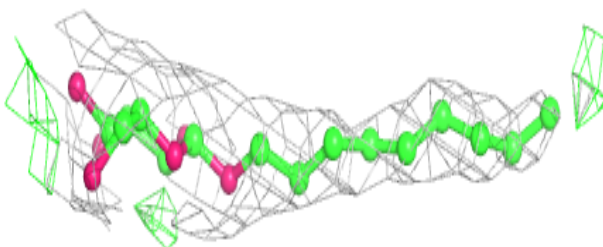
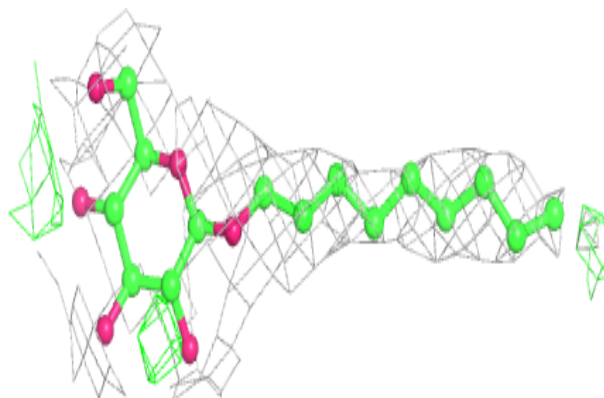
The following is a graphical depiction of the model fit to experimental electron density of all instances of the Ligand of Interest. In addition, ligands with molecular weight > 250 and outliers as shown on the geometry validation Tables will also be included. Each fit is shown from different orientation to approximate a three-dimensional view.

Electron density around PX4 B 301:

$2mF_o-DF_c$ (at 0.7 rmsd) in gray
 mF_o-DF_c (at 3 rmsd) in purple (negative)
and green (positive)

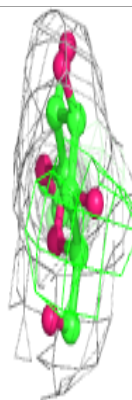
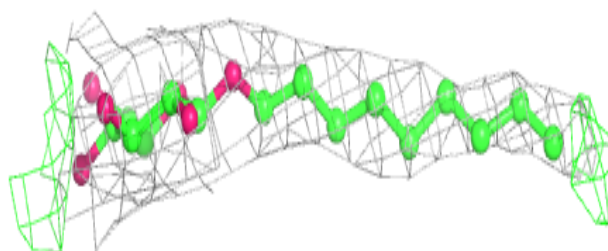
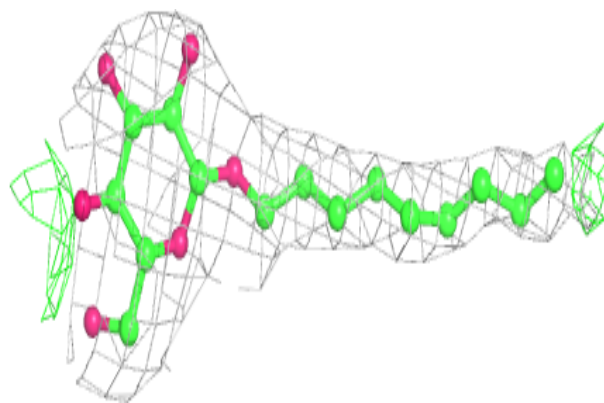
**Electron density around BNG A 301:**

$2mF_o-DF_c$ (at 0.7 rmsd) in gray
 mF_o-DF_c (at 3 rmsd) in purple (negative)
and green (positive)

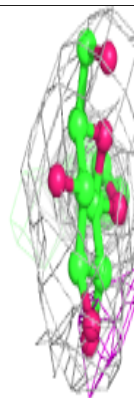
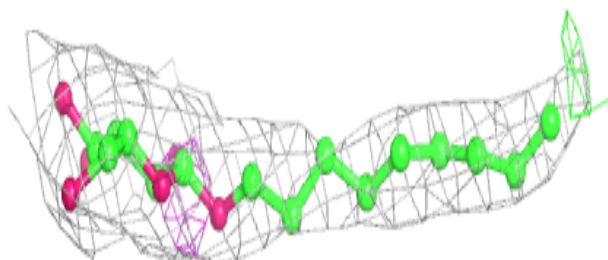
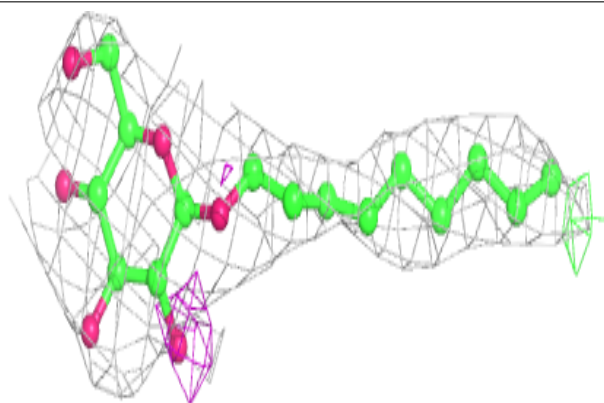


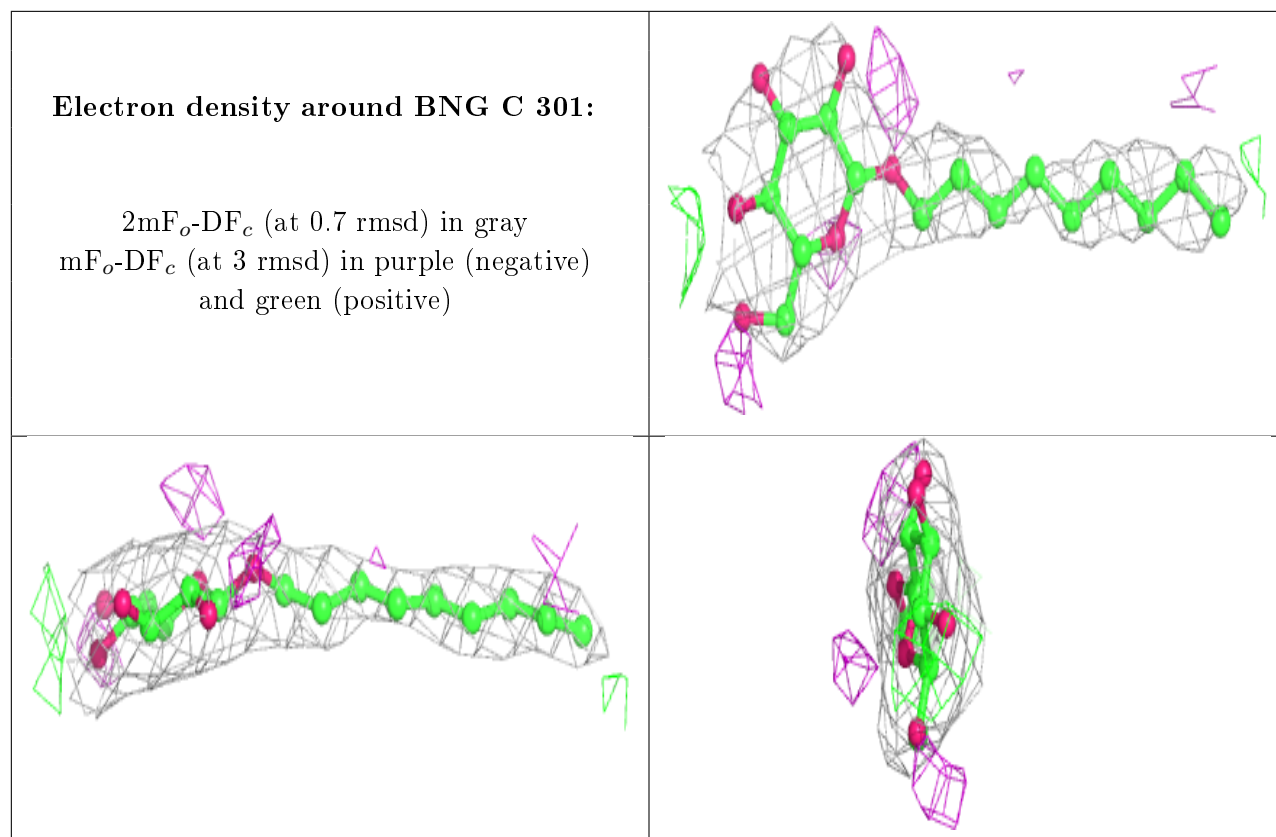
Electron density around BNG C 302:

$2mF_o-DF_c$ (at 0.7 rmsd) in gray
 mF_o-DF_c (at 3 rmsd) in purple (negative)
and green (positive)

**Electron density around BNG A 302:**

$2mF_o-DF_c$ (at 0.7 rmsd) in gray
 mF_o-DF_c (at 3 rmsd) in purple (negative)
and green (positive)





6.5 Other polymers [i](#)

There are no such residues in this entry.