



Full wwPDB X-ray Structure Validation Report ⓘ

May 16, 2020 – 01:03 pm BST

PDB ID : 5DXE
Title : Estrogen Receptor Alpha Ligand Binding Domain Y537S Mutant in Complex with Stapled Peptide SRC2-P4 and Estradiol
Authors : Fanning, S.W.; Speltz, T.E.; Mayne, C.G.; Tajkhorshid, E.; Greene, G.L.; Moore, T.W.
Deposited on : 2015-09-23
Resolution : 1.50 Å(reported)

This is a Full wwPDB X-ray Structure Validation Report for a publicly released PDB entry.

We welcome your comments at validation@mail.wwpdb.org

A user guide is available at

<https://www.wwpdb.org/validation/2017/XrayValidationReportHelp>

with specific help available everywhere you see the ⓘ symbol.

The following versions of software and data (see [references ⓘ](#)) were used in the production of this report:

MolProbity : 4.02b-467
Mogul : 1.8.5 (274361), CSD as541be (2020)
Xtriage (Phenix) : 1.13
EDS : 2.11
buster-report : 1.1.7 (2018)
Percentile statistics : 20191225.v01 (using entries in the PDB archive December 25th 2019)
Refmac : 5.8.0158
CCP4 : 7.0.044 (Gargrove)
Ideal geometry (proteins) : Engh & Huber (2001)
Ideal geometry (DNA, RNA) : Parkinson et al. (1996)
Validation Pipeline (wwPDB-VP) : 2.11

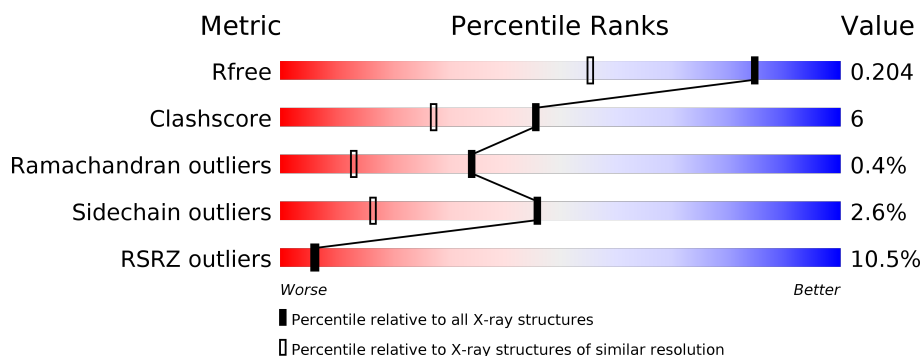
1 Overall quality at a glance

The following experimental techniques were used to determine the structure:

X-RAY DIFFRACTION

The reported resolution of this entry is 1.50 Å.

Percentile scores (ranging between 0-100) for global validation metrics of the entry are shown in the following graphic. The table shows the number of entries on which the scores are based.



Metric	Whole archive (#Entries)	Similar resolution (#Entries, resolution range(Å))
R_{free}	130704	2936 (1.50-1.50)
Clashscore	141614	3144 (1.50-1.50)
Ramachandran outliers	138981	3066 (1.50-1.50)
Sidechain outliers	138945	3064 (1.50-1.50)
RSRZ outliers	127900	2884 (1.50-1.50)

The table below summarises the geometric issues observed across the polymeric chains and their fit to the electron density. The red, orange, yellow and green segments on the lower bar indicate the fraction of residues that contain outliers for ≥ 3 , 2, 1 and 0 types of geometric quality criteria respectively. A grey segment represents the fraction of residues that are not modelled. The numeric value for each fraction is indicated below the corresponding segment, with a dot representing fractions $\leq 5\%$. The upper red bar (where present) indicates the fraction of residues that have poor fit to the electron density. The numeric value is given above the bar.

Mol	Chain	Length	Quality of chain
1	A	261	<div> <div>6%</div> <div>78%</div> <div>10%</div> <div>11%</div> </div>
1	B	261	<div> <div>10%</div> <div>77%</div> <div>8%</div> <div>14%</div> </div>
2	C	13	<div> <div>8%</div> <div>77%</div> <div>15%</div> <div>8%</div> </div>
2	D	13	<div> <div>46%</div> <div>23%</div> <div>38%</div> <div>31%</div> <div>8%</div> </div>

The following table lists non-polymeric compounds, carbohydrate monomers and non-standard residues in protein, DNA, RNA chains that are outliers for geometric or electron-density-fit crite-

ria:

Mol	Type	Chain	Res	Chirality	Geometry	Clashes	Electron density
1	SCH	A	530	-	-	X	-
1	SCH	B	530	-	-	-	X

2 Entry composition

There are 4 unique types of molecules in this entry. The entry contains 4363 atoms, of which 0 are hydrogens and 0 are deuteriums.

In the tables below, the ZeroOcc column contains the number of atoms modelled with zero occupancy, the AltConf column contains the number of residues with at least one atom in alternate conformation and the Trace column contains the number of residues modelled with at most 2 atoms.

- Molecule 1 is a protein called Estrogen receptor.

Mol	Chain	Residues	Atoms					ZeroOcc	AltConf	Trace
1	A	231	Total	C	N	O	S	0	9	0
			1906	1211	327	342	26			
1	B	225	Total	C	N	O	S	0	5	0
			1817	1155	315	323	24			

There are 8 discrepancies between the modelled and reference sequences:

Chain	Residue	Modelled	Actual	Comment	Reference
A	294	MET	-	initiating methionine	UNP P03372
A	295	ASP	-	expression tag	UNP P03372
A	296	PRO	-	expression tag	UNP P03372
A	537	SER	TYR	engineered mutation	UNP P03372
B	294	MET	-	initiating methionine	UNP P03372
B	295	ASP	-	expression tag	UNP P03372
B	296	PRO	-	expression tag	UNP P03372
B	537	SER	TYR	engineered mutation	UNP P03372

- Molecule 2 is a protein called Nuclear receptor coactivator 2.

Mol	Chain	Residues	Atoms				ZeroOcc	AltConf	Trace
2	C	13	Total	C	N	O	0	0	1
			101	64	21	16			
2	D	13	Total	C	N	O	0	0	1
			101	64	21	16			

There are 6 discrepancies between the modelled and reference sequences:

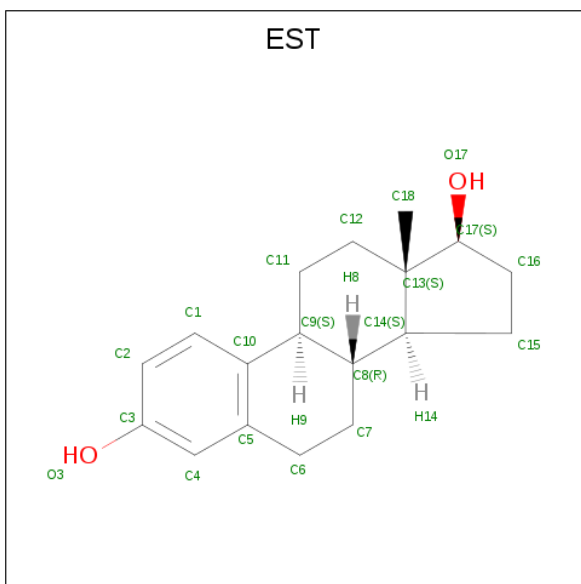
Chain	Residue	Modelled	Actual	Comment	Reference
C	1	ACE	-	expression tag	UNP Q15596
C	4	MK8	ILE	conflict	UNP Q15596
C	13	NH2	-	expression tag	UNP Q15596
D	1	ACE	-	expression tag	UNP Q15596

Continued on next page...

Continued from previous page...

Chain	Residue	Modelled	Actual	Comment	Reference
D	4	MK8	ILE	conflict	UNP Q15596
D	13	NH2	-	expression tag	UNP Q15596

- Molecule 3 is ESTRADIOL (three-letter code: EST) (formula: $C_{18}H_{24}O_2$).



Mol	Chain	Residues	Atoms			ZeroOcc	AltConf
3	A	1	Total	C	O	0	0
			20	18	2		
3	B	1	Total	C	O	0	0
			20	18	2		

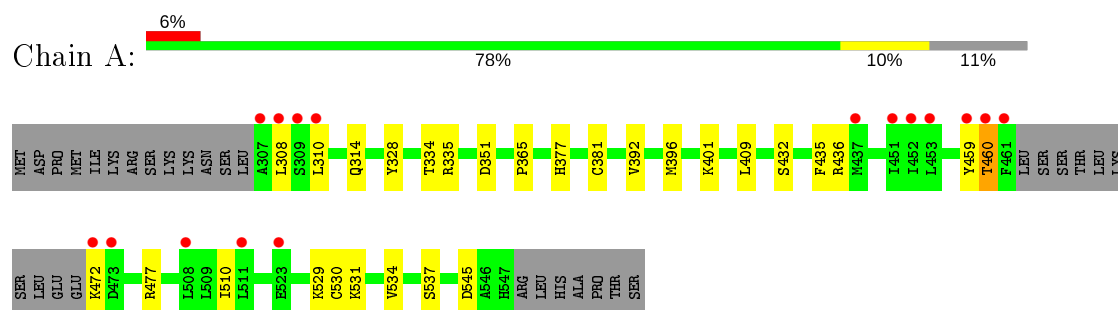
- Molecule 4 is water.

Mol	Chain	Residues	Atoms		ZeroOcc	AltConf
4	A	208	Total	O	0	0
			208	208		
4	B	171	Total	O	0	0
			171	171		
4	C	14	Total	O	0	0
			14	14		
4	D	5	Total	O	0	0
			5	5		

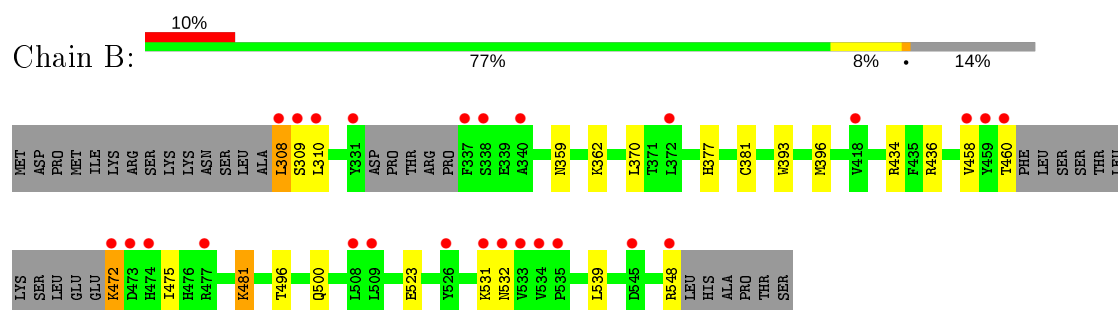
3 Residue-property plots [i](#)

These plots are drawn for all protein, RNA and DNA chains in the entry. The first graphic for a chain summarises the proportions of the various outlier classes displayed in the second graphic. The second graphic shows the sequence view annotated by issues in geometry and electron density. Residues are color-coded according to the number of geometric quality criteria for which they contain at least one outlier: green = 0, yellow = 1, orange = 2 and red = 3 or more. A red dot above a residue indicates a poor fit to the electron density ($RSRZ > 2$). Stretches of 2 or more consecutive residues without any outlier are shown as a green connector. Residues present in the sample, but not in the model, are shown in grey.

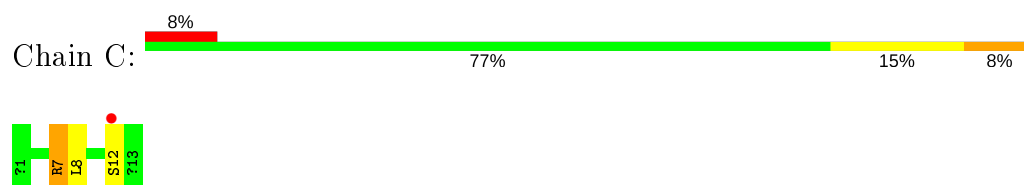
- Molecule 1: Estrogen receptor



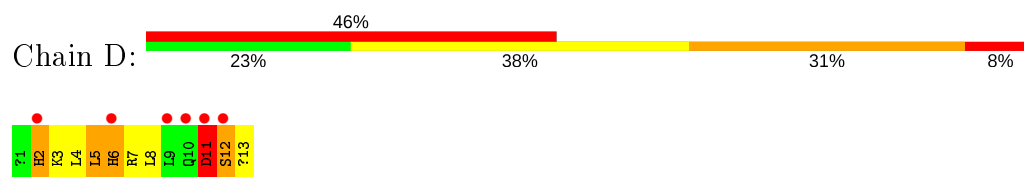
- Molecule 1: Estrogen receptor



- Molecule 2: Nuclear receptor coactivator 2



- Molecule 2: Nuclear receptor coactivator 2



4 Data and refinement statistics

Property	Value	Source
Space group	P 1 21 1	Depositor
Cell constants a, b, c, α , β , γ	56.01Å 85.18Å 58.29Å 90.00° 108.64° 90.00°	Depositor
Resolution (Å)	27.61 – 1.50 27.62 – 1.50	Depositor EDS
% Data completeness (in resolution range)	88.4 (27.61-1.50) 88.4 (27.62-1.50)	Depositor EDS
R_{merge}	(Not available)	Depositor
R_{sym}	(Not available)	Depositor
$\langle I/\sigma(I) \rangle$ ¹	1.87 (at 1.50Å)	Xtriage
Refinement program	PHENIX 1.9_1692	Depositor
R, R_{free}	0.178 , 0.201 0.184 , 0.204	Depositor DCC
R_{free} test set	3636 reflections (4.99%)	wwPDB-VP
Wilson B-factor (Å ²)	14.2	Xtriage
Anisotropy	0.053	Xtriage
Bulk solvent k_{sol} (e/Å ³), B_{sol} (Å ²)	0.38 , 52.6	EDS
L-test for twinning ²	$\langle L \rangle = 0.50$, $\langle L^2 \rangle = 0.34$	Xtriage
Estimated twinning fraction	0.016 for l,-k,h	Xtriage
F_o, F_c correlation	0.96	EDS
Total number of atoms	4363	wwPDB-VP
Average B, all atoms (Å ²)	24.0	wwPDB-VP

Xtriage's analysis on translational NCS is as follows: *The largest off-origin peak in the Patterson function is 6.30% of the height of the origin peak. No significant pseudotranslation is detected.*

¹Intensities estimated from amplitudes.

²Theoretical values of $\langle |L| \rangle$, $\langle L^2 \rangle$ for acentric reflections are 0.5, 0.333 respectively for untwinned datasets, and 0.375, 0.2 for perfectly twinned datasets.

5 Model quality [i](#)

5.1 Standard geometry [i](#)

Bond lengths and bond angles in the following residue types are not validated in this section: MK8, EST, SCH, ACE, NH2

The Z score for a bond length (or angle) is the number of standard deviations the observed value is removed from the expected value. A bond length (or angle) with $|Z| > 5$ is considered an outlier worth inspection. RMSZ is the root-mean-square of all Z scores of the bond lengths (or angles).

Mol	Chain	Bond lengths		Bond angles	
		RMSZ	$\# Z > 5$	RMSZ	$\# Z > 5$
1	A	0.35	0/1900	0.56	0/2562
1	B	0.40	0/1812	0.60	1/2441 (0.0%)
2	C	1.74	1/79 (1.3%)	1.29	0/101
2	D	1.77	1/79 (1.3%)	1.82	3/101 (3.0%)
All	All	0.51	2/3870 (0.1%)	0.65	4/5205 (0.1%)

All (2) bond length outliers are listed below:

Mol	Chain	Res	Type	Atoms	Z	Observed(Å)	Ideal(Å)
2	D	5	LEU	CA-C	-7.73	1.32	1.52
2	C	7	ARG	CA-C	-5.92	1.37	1.52

All (4) bond angle outliers are listed below:

Mol	Chain	Res	Type	Atoms	Z	Observed(°)	Ideal(°)
2	D	2	HIS	CA-CB-CG	-7.36	101.09	113.60
2	D	7	ARG	NE-CZ-NH1	6.91	123.76	120.30
2	D	6	HIS	N-CA-CB	-5.15	101.33	110.60
1	B	531	LYS	C-N-CA	5.01	134.23	121.70

There are no chirality outliers.

There are no planarity outliers.

5.2 Too-close contacts [i](#)

In the following table, the Non-H and H(model) columns list the number of non-hydrogen atoms and hydrogen atoms in the chain respectively. The H(added) column lists the number of hydrogen atoms added and optimized by MolProbity. The Clashes column lists the number of clashes within the asymmetric unit, whereas Symm-Clashes lists symmetry related clashes.

Mol	Chain	Non-H	H(model)	H(added)	Clashes	Symm-Clashes
1	A	1906	0	1938	19	1
1	B	1817	0	1849	20	1
2	C	101	0	102	2	0
2	D	101	0	102	14	0
3	A	20	0	23	0	0
3	B	20	0	23	0	0
4	A	208	0	0	4	0
4	B	171	0	0	4	0
4	C	14	0	0	0	0
4	D	5	0	0	0	0
All	All	4363	0	4037	51	1

The all-atom clashscore is defined as the number of clashes found per 1000 atoms (including hydrogen atoms). The all-atom clashscore for this structure is 6.

All (51) close contacts within the same asymmetric unit are listed below, sorted by their clash magnitude.

Atom-1	Atom-2	Interatomic distance (Å)	Clash overlap (Å)
2:D:2:HIS:CD2	2:D:6:HIS:CD2	2.31	1.17
2:D:8:MK8:HB1A	2:D:11:ASP:HB2	1.56	0.88
1:B:308:LEU:HD12	1:B:309:SER:H	1.39	0.87
1:B:308:LEU:CD1	1:B:309:SER:H	1.88	0.85
2:D:11:ASP:O	2:D:13:NH2:N	2.10	0.84
2:D:8:MK8:CB1	2:D:11:ASP:HB2	2.05	0.84
2:D:2:HIS:CD2	2:D:6:HIS:HD2	1.98	0.79
1:B:377:HIS:NE2	1:B:460:THR:HG23	1.98	0.77
1:B:396:MET:O	1:B:436:ARG:HD3	1.85	0.76
1:A:529:LYS:NZ	4:A:1101:HOH:O	2.21	0.73
1:A:381[B]:SCH:SG	4:A:1111:HOH:O	2.47	0.72
1:B:362:LYS:HZ1	2:D:13:NH2:N	1.91	0.68
1:B:539:LEU:HD13	2:D:4:MK8:HD	1.75	0.68
2:D:2:HIS:HD2	2:D:6:HIS:CD2	2.05	0.67
2:D:2:HIS:NE2	2:D:6:HIS:CD2	2.64	0.66
1:B:308:LEU:HD12	1:B:309:SER:N	2.14	0.62
1:A:396:MET:O	1:A:436:ARG:HD3	2.00	0.61
1:B:532:ASN:O	4:B:1101:HOH:O	2.16	0.61
1:A:459:TYR:OH	1:B:434:ARG:NE	2.35	0.59
1:A:308:LEU:HD21	1:A:477:ARG:HD2	1.84	0.58
2:D:8:MK8:HB1B	2:D:11:ASP:HB2	1.85	0.58
1:A:351[B]:ASP:OD1	1:A:537:SER:OG	2.22	0.56
1:A:334:THR:O	1:A:335:ARG:HD2	2.05	0.56
1:B:523:GLU:OE2	1:B:548:ARG:NH1	2.39	0.56

Continued on next page...

Continued from previous page...

Atom-1	Atom-2	Interatomic distance (Å)	Clash overlap (Å)
1:A:310:LEU:HD22	1:A:314:GLN:HB3	1.91	0.52
2:D:12:SER:OG	2:D:12:SER:O	2.25	0.52
4:A:1192:HOH:O	2:C:12:SER:HB3	2.10	0.51
1:B:362:LYS:NZ	2:D:13:NH2:N	2.59	0.50
1:B:496:THR:O	1:B:500:GLN:HG3	2.12	0.50
1:B:548:ARG:HB2	4:B:1219:HOH:O	2.12	0.50
1:A:529:LYS:HZ3	1:A:530:SCH:HE1	1.77	0.48
2:D:2:HIS:NE2	2:D:6:HIS:NE2	2.63	0.46
1:B:458:VAL:O	1:B:472:LYS:HD2	2.15	0.46
1:A:392:VAL:HG13	1:A:432:SER:HA	1.98	0.46
1:A:529:LYS:NZ	1:A:530:SCH:CE	2.79	0.46
2:C:7:ARG:O	2:C:8:MK8:HB1A	2.16	0.46
1:B:370:LEU:HD21	1:B:475:ILE:HG13	1.98	0.45
1:A:308:LEU:HD21	1:A:477:ARG:CD	2.46	0.45
1:B:308:LEU:HD13	1:B:309:SER:H	1.75	0.45
1:B:381[A]:SCH:HE2	4:B:1194:HOH:O	2.17	0.44
1:B:310:LEU:O	1:B:481:LYS:HE2	2.19	0.43
1:B:460:THR:HG22	4:B:1206:HOH:O	2.18	0.42
1:A:392:VAL:HG13	1:A:432:SER:CA	2.50	0.42
1:A:531:LYS:HE3	4:A:1180:HOH:O	2.20	0.42
2:D:4:MK8:HDA	2:D:8:MK8:HD	1.69	0.42
1:A:435:PHE:HE1	1:A:510:ILE:HG21	1.85	0.42
1:A:529:LYS:HZ3	1:A:530:SCH:CE	2.33	0.41
1:A:377:HIS:NE2	1:A:460:THR:HB	2.36	0.41
1:A:529:LYS:NZ	1:A:530:SCH:HE3	2.35	0.41
1:A:401:LYS:HD3	1:A:409:LEU:HG	2.02	0.40
1:B:393:TRP:CE3	1:B:396:MET:SD	3.15	0.40

All (1) symmetry-related close contacts are listed below. The label for Atom-2 includes the symmetry operator and encoded unit-cell translations to be applied.

Atom-1	Atom-2	Interatomic distance (Å)	Clash overlap (Å)
1:A:328:TYR:OH	1:B:359:ASN:ND2[1_554]	2.10	0.10

5.3 Torsion angles [i](#)

5.3.1 Protein backbone [i](#)

In the following table, the Percentiles column shows the percent Ramachandran outliers of the chain as a percentile score with respect to all X-ray entries followed by that with respect to entries

of similar resolution.

The Analysed column shows the number of residues for which the backbone conformation was analysed, and the total number of residues.

Mol	Chain	Analysed	Favoured	Allowed	Outliers	Percentiles	
1	A	231/261 (88%)	230 (100%)	1 (0%)	0	100	100
1	B	220/261 (84%)	218 (99%)	2 (1%)	0	100	100
2	C	9/13 (69%)	8 (89%)	1 (11%)	0	100	100
2	D	9/13 (69%)	7 (78%)	0	2 (22%)	0	0
All	All	469/548 (86%)	463 (99%)	4 (1%)	2 (0%)	34	13

All (2) Ramachandran outliers are listed below:

Mol	Chain	Res	Type
2	D	12	SER
2	D	11	ASP

5.3.2 Protein sidechains ⓘ

In the following table, the Percentiles column shows the percent sidechain outliers of the chain as a percentile score with respect to all X-ray entries followed by that with respect to entries of similar resolution.

The Analysed column shows the number of residues for which the sidechain conformation was analysed, and the total number of residues.

Mol	Chain	Analysed	Rotameric	Outliers	Percentiles	
1	A	210/233 (90%)	205 (98%)	5 (2%)	49	19
1	B	199/233 (85%)	196 (98%)	3 (2%)	65	39
2	C	9/9 (100%)	9 (100%)	0	100	100
2	D	9/9 (100%)	6 (67%)	3 (33%)	0	0
All	All	427/484 (88%)	416 (97%)	11 (3%)	46	16

All (11) residues with a non-rotameric sidechain are listed below:

Mol	Chain	Res	Type
1	A	365	PRO
1	A	460	THR
1	A	472	LYS
1	A	534	VAL

Continued on next page...

Continued from previous page...

Mol	Chain	Res	Type
1	A	545	ASP
1	B	308	LEU
1	B	472	LYS
1	B	481	LYS
2	D	3	LYS
2	D	5	LEU
2	D	11	ASP

Some sidechains can be flipped to improve hydrogen bonding and reduce clashes. All (2) such sidechains are listed below:

Mol	Chain	Res	Type
2	D	2	HIS
2	D	6	HIS

5.3.3 RNA ⓘ

There are no RNA molecules in this entry.

5.4 Non-standard residues in protein, DNA, RNA chains ⓘ

13 non-standard protein/DNA/RNA residues are modelled in this entry.

In the following table, the Counts columns list the number of bonds (or angles) for which Mogul statistics could be retrieved, the number of bonds (or angles) that are observed in the model and the number of bonds (or angles) that are defined in the Chemical Component Dictionary. The Link column lists molecule types, if any, to which the group is linked. The Z score for a bond length (or angle) is the number of standard deviations the observed value is removed from the expected value. A bond length (or angle) with $|Z| > 2$ is considered an outlier worth inspection. RMSZ is the root-mean-square of all Z scores of the bond lengths (or angles).

Mol	Type	Chain	Res	Link	Bond lengths			Bond angles		
					Counts	RMSZ	# Z > 2	Counts	RMSZ	# Z > 2
1	SCH	A	381[B]	1	6,7,8	1.94	1 (16%)	3,7,9	0.71	0
1	SCH	B	530	1	6,7,8	1.60	1 (16%)	3,7,9	4.89	1 (33%)
2	MK8	D	8	2	5,8,9	8.52	1 (20%)	4,10,12	1.69	1 (25%)
1	SCH	A	530	1	6,7,8	0.94	1 (16%)	3,7,9	0.63	0
1	SCH	B	381[A]	1	6,7,8	0.97	0	3,7,9	0.92	0
1	SCH	A	381[A]	1	6,7,8	1.91	1 (16%)	3,7,9	0.78	0
2	MK8	C	4	2	5,8,9	0.77	0	4,10,12	0.68	0
2	MK8	D	4	2	5,8,9	2.84	1 (20%)	4,10,12	0.76	0

Mol	Type	Chain	Res	Link	Bond lengths			Bond angles		
					Counts	RMSZ	# Z > 2	Counts	RMSZ	# Z > 2
1	SCH	A	417[B]	1	6,7,8	1.21	0	3,7,9	0.93	0
1	SCH	B	417	1	6,7,8	0.87	0	3,7,9	1.31	0
1	SCH	B	381[B]	1	6,7,8	1.14	0	3,7,9	0.55	0
2	MK8	C	8	2	5,8,9	3.29	1 (20%)	4,10,12	1.64	1 (25%)
1	SCH	A	417[A]	1	6,7,8	1.01	0	3,7,9	0.86	0

In the following table, the Chirals column lists the number of chiral outliers, the number of chiral centers analysed, the number of these observed in the model and the number defined in the Chemical Component Dictionary. Similar counts are reported in the Torsion and Rings columns. '-' means no outliers of that kind were identified.

Mol	Type	Chain	Res	Link	Chirals	Torsions	Rings
1	SCH	A	381[B]	1	-	0/2/6/8	-
1	SCH	B	530	1	-	1/2/6/8	-
2	MK8	D	8	2	-	1/6/8/11	-
1	SCH	A	530	1	-	0/2/6/8	-
1	SCH	B	381[A]	1	-	0/2/6/8	-
1	SCH	A	381[A]	1	-	0/2/6/8	-
2	MK8	C	4	2	-	1/6/8/11	-
2	MK8	D	4	2	-	1/6/8/11	-
1	SCH	A	417[B]	1	-	0/2/6/8	-
1	SCH	B	417	1	-	0/2/6/8	-
1	SCH	B	381[B]	1	-	0/2/6/8	-
2	MK8	C	8	2	-	1/6/8/11	-
1	SCH	A	417[A]	1	-	0/2/6/8	-

All (7) bond length outliers are listed below:

Mol	Chain	Res	Type	Atoms	Z	Observed(Å)	Ideal(Å)
2	D	8	MK8	CB-CA	-18.90	1.33	1.55
2	C	8	MK8	CB-CA	-7.18	1.47	1.55
2	D	4	MK8	CB-CA	-5.98	1.48	1.55
1	A	381[A]	SCH	O-C	4.00	1.35	1.19
1	A	381[B]	SCH	O-C	3.98	1.35	1.19
1	B	530	SCH	CB-SG	-2.62	1.73	1.81
1	A	530	SCH	CE-SD	-2.06	1.68	1.81

All (3) bond angle outliers are listed below:

Mol	Chain	Res	Type	Atoms	Z	Observed(°)	Ideal(°)
1	B	530	SCH	CB-SG-SD	8.45	125.72	103.82
2	D	8	MK8	CB1-CA-CB	3.14	116.52	111.00

Continued on next page...

Continued from previous page...

Mol	Chain	Res	Type	Atoms	Z	Observed(°)	Ideal(°)
2	C	8	MK8	CB1-CA-CB	2.90	116.11	111.00

There are no chirality outliers.

All (5) torsion outliers are listed below:

Mol	Chain	Res	Type	Atoms
1	B	530	SCH	CA-CB-SG-SD
2	C	4	MK8	CA-CB-CG-CD
2	D	4	MK8	CA-CB-CG-CD
2	D	8	MK8	O-C-CA-CB1
2	C	8	MK8	O-C-CA-CB1

There are no ring outliers.

6 monomers are involved in 12 short contacts:

Mol	Chain	Res	Type	Clashes	Symm-Clashes
1	A	381[B]	SCH	1	0
2	D	8	MK8	4	0
1	A	530	SCH	4	0
1	B	381[A]	SCH	1	0
2	D	4	MK8	2	0
2	C	8	MK8	1	0

5.5 Carbohydrates [i](#)

There are no carbohydrates in this entry.

5.6 Ligand geometry [i](#)

2 ligands are modelled in this entry.

In the following table, the Counts columns list the number of bonds (or angles) for which Mogul statistics could be retrieved, the number of bonds (or angles) that are observed in the model and the number of bonds (or angles) that are defined in the Chemical Component Dictionary. The Link column lists molecule types, if any, to which the group is linked. The Z score for a bond length (or angle) is the number of standard deviations the observed value is removed from the expected value. A bond length (or angle) with $|Z| > 2$ is considered an outlier worth inspection. RMSZ is the root-mean-square of all Z scores of the bond lengths (or angles).

Mol	Type	Chain	Res	Link	Bond lengths			Bond angles		
					Counts	RMSZ	# Z > 2	Counts	RMSZ	# Z > 2
3	EST	B	1000	-	23,23,23	1.64	5 (21%)	36,36,36	1.43	6 (16%)
3	EST	A	1000	-	23,23,23	1.91	7 (30%)	36,36,36	1.31	4 (11%)

In the following table, the Chirals column lists the number of chiral outliers, the number of chiral centers analysed, the number of these observed in the model and the number defined in the Chemical Component Dictionary. Similar counts are reported in the Torsion and Rings columns. '-' means no outliers of that kind were identified.

Mol	Type	Chain	Res	Link	Chirals	Torsions	Rings
3	EST	B	1000	-	-	-	0/4/4/4
3	EST	A	1000	-	-	-	0/4/4/4

All (12) bond length outliers are listed below:

Mol	Chain	Res	Type	Atoms	Z	Observed(Å)	Ideal(Å)
3	A	1000	EST	C10-C9	-4.69	1.45	1.52
3	B	1000	EST	C5-C10	3.60	1.45	1.40
3	A	1000	EST	C1-C10	-3.11	1.35	1.39
3	A	1000	EST	C5-C10	2.87	1.44	1.40
3	A	1000	EST	C4-C5	-2.84	1.34	1.39
3	A	1000	EST	C13-C17	-2.77	1.49	1.54
3	A	1000	EST	C8-C14	-2.74	1.48	1.53
3	B	1000	EST	C7-C8	-2.56	1.48	1.53
3	B	1000	EST	C13-C14	-2.52	1.50	1.55
3	B	1000	EST	C10-C9	-2.36	1.49	1.52
3	B	1000	EST	O17-C17	-2.11	1.40	1.43
3	A	1000	EST	C12-C13	-2.02	1.50	1.54

All (10) bond angle outliers are listed below:

Mol	Chain	Res	Type	Atoms	Z	Observed(°)	Ideal(°)
3	A	1000	EST	C16-C17-C13	-4.65	100.84	104.53
3	B	1000	EST	C3-C4-C5	3.89	125.15	120.83
3	B	1000	EST	C2-C3-C4	-3.37	116.48	120.17
3	A	1000	EST	C6-C7-C8	-2.95	105.67	110.59
3	B	1000	EST	C10-C9-C8	2.72	114.89	111.58
3	B	1000	EST	C1-C10-C5	-2.58	115.59	118.74
3	B	1000	EST	C7-C8-C9	-2.44	106.89	109.28
3	A	1000	EST	C11-C9-C8	-2.42	108.13	111.39
3	B	1000	EST	C13-C14-C8	-2.29	110.98	114.38
3	A	1000	EST	C10-C9-C8	2.01	114.03	111.58

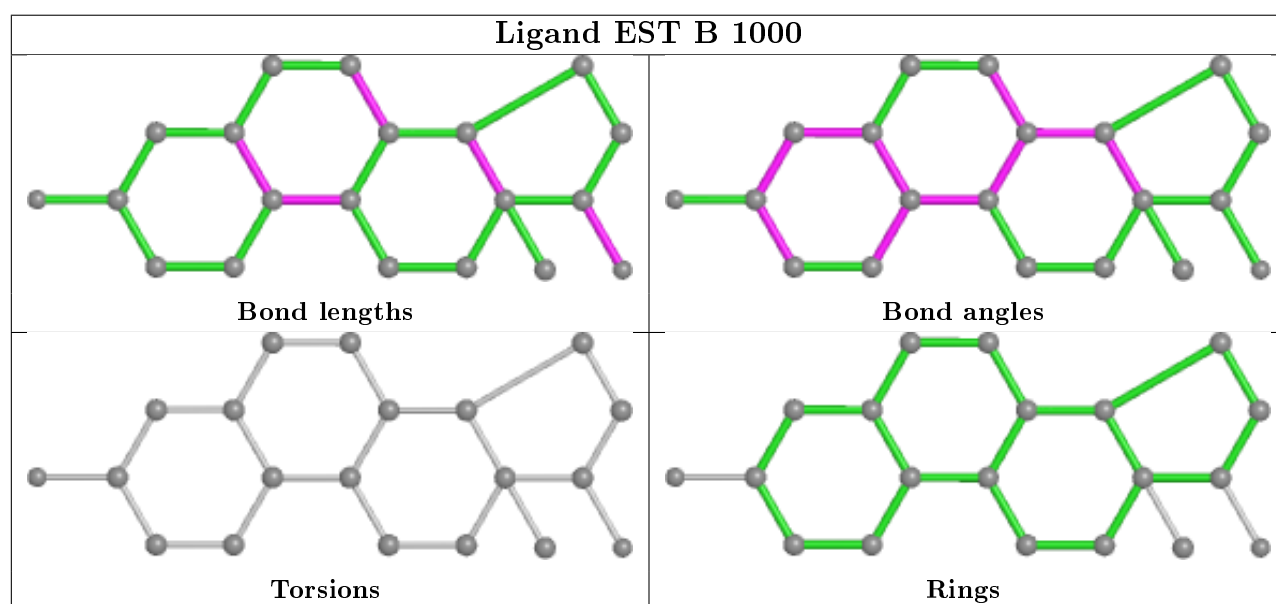
There are no chirality outliers.

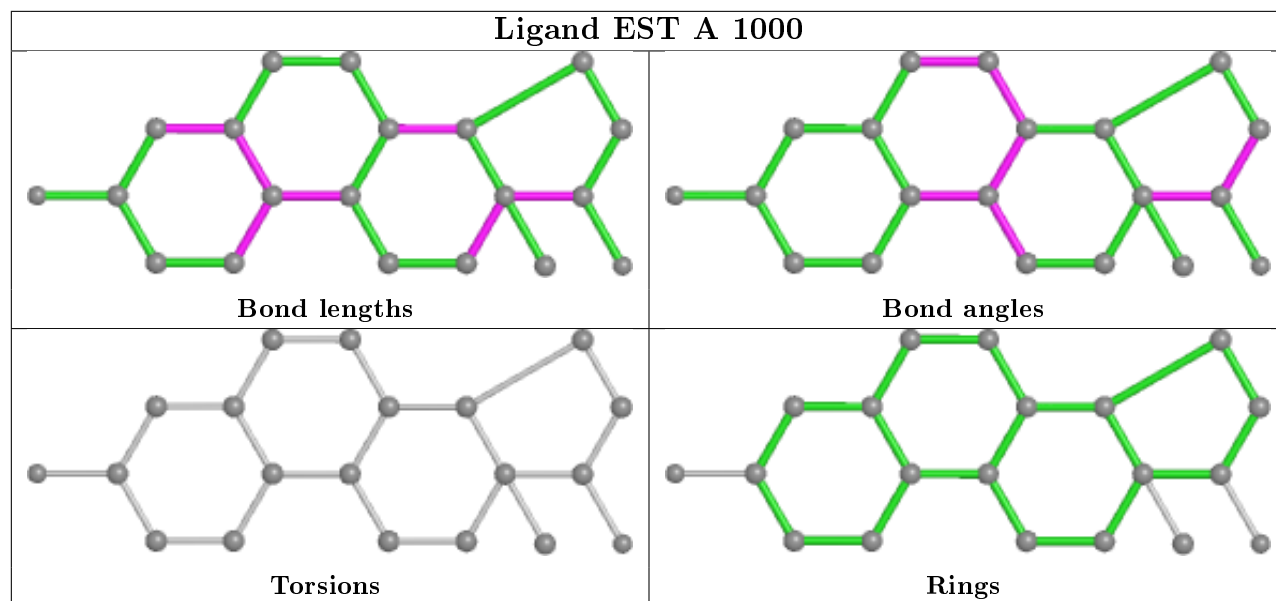
There are no torsion outliers.

There are no ring outliers.

No monomer is involved in short contacts.

The following is a two-dimensional graphical depiction of Mogul quality analysis of bond lengths, bond angles, torsion angles, and ring geometry for all instances of the Ligand of Interest. In addition, ligands with molecular weight > 250 and outliers as shown on the validation Tables will also be included. For torsion angles, if less than 5% of the Mogul distribution of torsion angles is within 10 degrees of the torsion angle in question, then that torsion angle is considered an outlier. Any bond that is central to one or more torsion angles identified as an outlier by Mogul will be highlighted in the graph. For rings, the root-mean-square deviation (RMSD) between the ring in question and similar rings identified by Mogul is calculated over all ring torsion angles. If the average RMSD is greater than 60 degrees and the minimal RMSD between the ring in question and any Mogul-identified rings is also greater than 60 degrees, then that ring is considered an outlier. The outliers are highlighted in purple. The color gray indicates Mogul did not find sufficient equivalents in the CSD to analyse the geometry.





5.7 Other polymers [i](#)

There are no such residues in this entry.

5.8 Polymer linkage issues [i](#)

There are no chain breaks in this entry.

6 Fit of model and data ⓘ

6.1 Protein, DNA and RNA chains ⓘ

In the following table, the column labelled ‘#RSRZ> 2’ contains the number (and percentage) of RSRZ outliers, followed by percent RSRZ outliers for the chain as percentile scores relative to all X-ray entries and entries of similar resolution. The OWAB column contains the minimum, median, 95th percentile and maximum values of the occupancy-weighted average B-factor per residue. The column labelled ‘Q< 0.9’ lists the number of (and percentage) of residues with an average occupancy less than 0.9.

Mol	Chain	Analysed	<RSRZ>	#RSRZ>2	OWAB(Å ²)	Q<0.9
1	A	228/261 (87%)	0.43	16 (7%) 16 17	9, 17, 40, 61	0
1	B	222/261 (85%)	0.79	26 (11%) 4 4	10, 24, 49, 62	1 (0%)
2	C	9/13 (69%)	0.53	1 (11%) 5 5	13, 17, 43, 62	0
2	D	9/13 (69%)	4.01	6 (66%) 0 0	32, 56, 88, 98	0
All	All	468/548 (85%)	0.67	49 (10%) 6 6	9, 20, 50, 98	1 (0%)

All (49) RSRZ outliers are listed below:

Mol	Chain	Res	Type	RSRZ
2	D	12	SER	10.8
1	B	533	VAL	10.3
1	A	461	PHE	10.2
1	B	459	TYR	8.7
2	D	2	HIS	8.4
1	A	308	LEU	7.2
1	B	532	ASN	6.3
1	A	309	SER	5.8
1	B	308	LEU	5.8
1	B	460	THR	5.4
1	A	459	TYR	5.4
2	D	11	ASP	5.2
1	B	458	VAL	4.8
1	B	472	LYS	4.3
1	B	337	PHE	4.0
1	B	309	SER	3.9
1	B	340	ALA	3.7
1	B	310	LEU	3.7
2	D	6	HIS	3.6
1	A	473	ASP	3.1
1	A	523	GLU	3.1

Continued on next page...

Continued from previous page...

Mol	Chain	Res	Type	RSRZ
1	B	548	ARG	3.1
1	A	307	ALA	3.0
1	A	511	LEU	3.0
1	B	534	VAL	3.0
1	A	437	MET	3.0
2	C	12	SER	3.0
1	A	452	ILE	2.9
1	B	372	LEU	2.8
1	A	310	LEU	2.7
1	B	535	PRO	2.7
1	A	472	LYS	2.6
1	B	331	TYR	2.4
2	D	10	GLN	2.4
1	B	338	SER	2.4
1	A	451	ILE	2.3
1	B	526	TYR	2.3
1	B	418	VAL	2.3
1	A	460	THR	2.2
1	B	474	HIS	2.2
2	D	9	LEU	2.2
1	A	508	LEU	2.2
1	B	477	ARG	2.2
1	A	453	LEU	2.1
1	B	509	LEU	2.1
1	B	473	ASP	2.1
1	B	508	LEU	2.1
1	B	531	LYS	2.1
1	B	545	ASP	2.0

6.2 Non-standard residues in protein, DNA, RNA chains [i](#)

In the following table, the Atoms column lists the number of modelled atoms in the group and the number defined in the chemical component dictionary. The B-factors column lists the minimum, median, 95th percentile and maximum values of B factors of atoms in the group. The column labelled 'Q< 0.9' lists the number of atoms with occupancy less than 0.9.

Mol	Type	Chain	Res	Atoms	RSCC	RSR	B-factors(Å ²)	Q<0.9
1	SCH	B	530	8/9	0.76	0.47	20,20,20,20	0
2	MK8	D	8	9/10	0.78	0.18	38,40,42,43	0
2	MK8	D	4	9/10	0.78	0.15	36,41,43,47	0
1	SCH	B	417	8/9	0.82	0.26	42,46,74,105	0
1	SCH	A	417[B]	8/9	0.85	0.13	19,20,55,57	8

Continued on next page...

Continued from previous page...

Mol	Type	Chain	Res	Atoms	RSCC	RSR	B-factors(\AA^2)	Q<0.9
1	SCH	A	417[A]	8/9	0.85	0.13	19,20,53,57	8
2	MK8	C	8	9/10	0.91	0.09	12,15,18,18	0
2	MK8	C	4	9/10	0.93	0.10	14,17,21,24	0
1	SCH	A	530	8/9	0.93	0.10	14,18,39,54	0
1	SCH	B	381[A]	8/9	0.95	0.10	13,14,35,47	8
1	SCH	B	381[B]	8/9	0.95	0.10	13,15,43,45	8
1	SCH	A	381[A]	8/9	0.96	0.09	9,11,17,63	8
1	SCH	A	381[B]	8/9	0.96	0.09	9,10,33,61	8

6.3 Carbohydrates [i](#)

There are no carbohydrates in this entry.

6.4 Ligands [i](#)

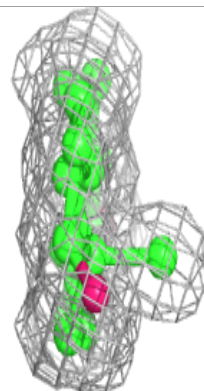
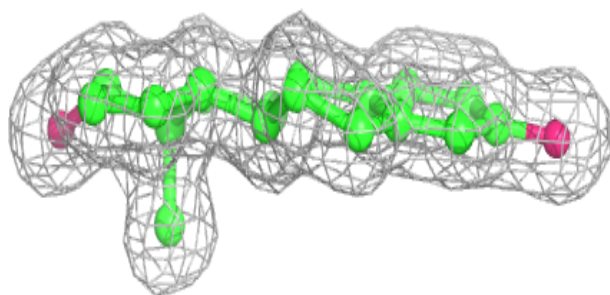
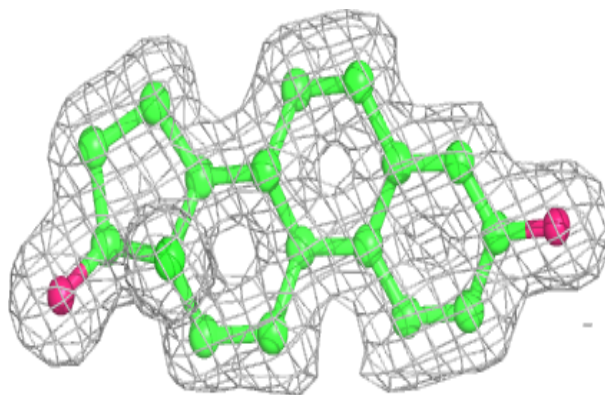
In the following table, the Atoms column lists the number of modelled atoms in the group and the number defined in the chemical component dictionary. The B-factors column lists the minimum, median, 95th percentile and maximum values of B factors of atoms in the group. The column labelled 'Q< 0.9' lists the number of atoms with occupancy less than 0.9.

Mol	Type	Chain	Res	Atoms	RSCC	RSR	B-factors(\AA^2)	Q<0.9
3	EST	B	1000	20/20	0.92	0.10	14,17,21,22	0
3	EST	A	1000	20/20	0.94	0.09	9,11,12,12	0

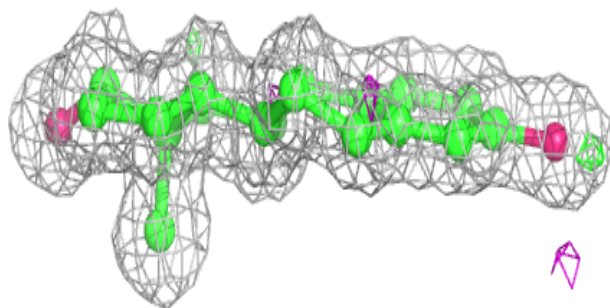
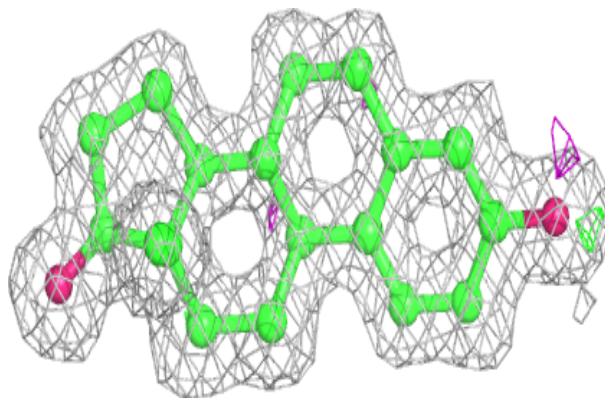
The following is a graphical depiction of the model fit to experimental electron density of all instances of the Ligand of Interest. In addition, ligands with molecular weight > 250 and outliers as shown on the geometry validation Tables will also be included. Each fit is shown from different orientation to approximate a three-dimensional view.

Electron density around EST B 1000:

$2mF_o-DF_c$ (at 0.7 rmsd) in gray
 mF_o-DF_c (at 3 rmsd) in purple (negative)
and green (positive)

**Electron density around EST A 1000:**

$2mF_o-DF_c$ (at 0.7 rmsd) in gray
 mF_o-DF_c (at 3 rmsd) in purple (negative)
and green (positive)



6.5 Other polymers [i](#)

There are no such residues in this entry.