



# Full wwPDB X-ray Structure Validation Report ⓘ

Aug 6, 2020 – 06:49 PM BST

PDB ID : 6DXX  
Title : Human N-acyl ethanolamine-hydrolyzing acid amidase (NAAA) in complex with non-covalent benzothiazole-piperazine inhibitor ARN19702, in presence of Triton X-100  
Authors : Gorelik, A.; Gebai, A.; Illes, K.; Piomelli, D.; Nagar, B.  
Deposited on : 2018-07-01  
Resolution : 2.70 Å(reported)

This is a Full wwPDB X-ray Structure Validation Report for a publicly released PDB entry.

We welcome your comments at [validation@mail.wwpdb.org](mailto:validation@mail.wwpdb.org)

A user guide is available at

<https://www.wwpdb.org/validation/2017/XrayValidationReportHelp>

with specific help available everywhere you see the ⓘ symbol.

---

The following versions of software and data (see [references ⓘ](#)) were used in the production of this report:

MolProbity : 4.02b-467  
Mogul : 1.8.5 (274361), CSD as541be (2020)  
Xtriage (Phenix) : 1.13  
EDS : 2.13.1  
buster-report : 1.1.7 (2018)  
Percentile statistics : 20191225.v01 (using entries in the PDB archive December 25th 2019)  
Refmac : 5.8.0158  
CCP4 : 7.0.044 (Gargrove)  
Ideal geometry (proteins) : Engh & Huber (2001)  
Ideal geometry (DNA, RNA) : Parkinson et al. (1996)  
Validation Pipeline (wwPDB-VP) : 2.13.1

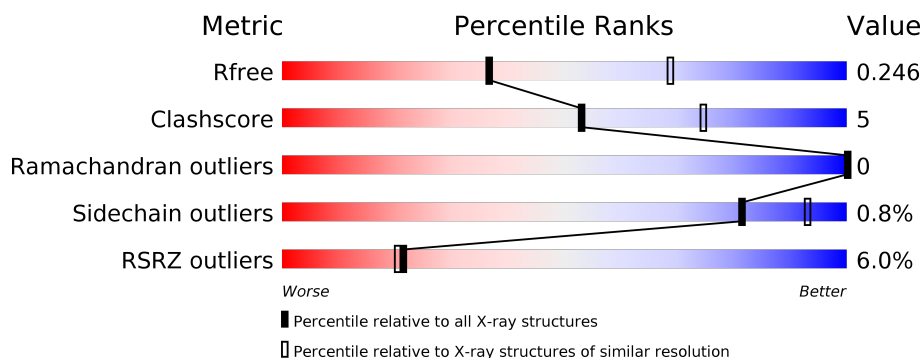
# 1 Overall quality at a glance

The following experimental techniques were used to determine the structure:

*X-RAY DIFFRACTION*

The reported resolution of this entry is 2.70 Å.

Percentile scores (ranging between 0-100) for global validation metrics of the entry are shown in the following graphic. The table shows the number of entries on which the scores are based.




Metric	Whole archive (#Entries)	Similar resolution (#Entries, resolution range(Å))
$R_{free}$	130704	2808 (2.70-2.70)
Clashscore	141614	3122 (2.70-2.70)
Ramachandran outliers	138981	3069 (2.70-2.70)
Sidechain outliers	138945	3069 (2.70-2.70)
RSRZ outliers	127900	2737 (2.70-2.70)

The table below summarises the geometric issues observed across the polymeric chains and their fit to the electron density. The red, orange, yellow and green segments on the lower bar indicate the fraction of residues that contain outliers for  $\geq 3$ , 2, 1 and 0 types of geometric quality criteria respectively. A grey segment represents the fraction of residues that are not modelled. The numeric value for each fraction is indicated below the corresponding segment, with a dot representing fractions  $\leq 5\%$ . The upper red bar (where present) indicates the fraction of residues that have poor fit to the electron density. The numeric value is given above the bar.

Mol	Chain	Length	Quality of chain
1	A	107	<div> <div>5%</div> <div> <div></div> <div>77%</div> <div>14%</div> <div>9%</div> </div> </div>
1	C	107	<div> <div>14%</div> <div> <div></div> <div>78%</div> <div>13%</div> <div>9%</div> </div> </div>
1	E	107	<div> <div>15%</div> <div> <div></div> <div>76%</div> <div>14%</div> <div>9%</div> </div> </div>
2	B	234	<div> <div>2%</div> <div> <div></div> <div>94%</div> <div></div> <div></div> </div> </div>
2	D	234	<div> <div>4%</div> <div> <div></div> <div>92%</div> <div>7%</div> <div></div> </div> </div>
2	F	234	<div> <div>4%</div> <div> <div></div> <div>87%</div> <div>11%</div> <div></div> </div> </div>

Continued on next page...

*Continued from previous page...*

Mol	Chain	Length	Quality of chain
3	G	2	

The following table lists non-polymeric compounds, carbohydrate monomers and non-standard residues in protein, DNA, RNA chains that are outliers for geometric or electron-density-fit criteria:

Mol	Type	Chain	Res	Chirality	Geometry	Clashes	Electron density
5	CL	D	404	-	-	X	-

## 2 Entry composition

There are 9 unique types of molecules in this entry. The entry contains 16346 atoms, of which 8022 are hydrogens and 0 are deuteriums.

In the tables below, the ZeroOcc column contains the number of atoms modelled with zero occupancy, the AltConf column contains the number of residues with at least one atom in alternate conformation and the Trace column contains the number of residues modelled with at most 2 atoms.

- Molecule 1 is a protein called N-acylethanolamine-hydrolyzing acid amidase subunit alpha.

Mol	Chain	Residues	Atoms						ZeroOcc	AltConf	Trace
1	A	97	Total	C	H	N	O	S	0	0	0
			1552	502	780	131	134	5			
1	C	97	Total	C	H	N	O	S	0	0	0
			1553	502	781	131	134	5			
1	E	97	Total	C	H	N	O	S	0	0	0
			1553	502	781	131	134	5			

There are 30 discrepancies between the modelled and reference sequences:

Chain	Residue	Modelled	Actual	Comment	Reference
A	19	ASP	-	expression tag	UNP Q02083
A	20	ARG	-	expression tag	UNP Q02083
A	21	HIS	-	expression tag	UNP Q02083
A	22	HIS	-	expression tag	UNP Q02083
A	23	HIS	-	expression tag	UNP Q02083
A	24	HIS	-	expression tag	UNP Q02083
A	25	HIS	-	expression tag	UNP Q02083
A	26	HIS	-	expression tag	UNP Q02083
A	27	LYS	-	expression tag	UNP Q02083
A	28	LEU	-	expression tag	UNP Q02083
C	19	ASP	-	expression tag	UNP Q02083
C	20	ARG	-	expression tag	UNP Q02083
C	21	HIS	-	expression tag	UNP Q02083
C	22	HIS	-	expression tag	UNP Q02083
C	23	HIS	-	expression tag	UNP Q02083
C	24	HIS	-	expression tag	UNP Q02083
C	25	HIS	-	expression tag	UNP Q02083
C	26	HIS	-	expression tag	UNP Q02083
C	27	LYS	-	expression tag	UNP Q02083
C	28	LEU	-	expression tag	UNP Q02083
E	19	ASP	-	expression tag	UNP Q02083
E	20	ARG	-	expression tag	UNP Q02083
E	21	HIS	-	expression tag	UNP Q02083

*Continued on next page...*

Continued from previous page...

Chain	Residue	Modelled	Actual	Comment	Reference
E	22	HIS	-	expression tag	UNP Q02083
E	23	HIS	-	expression tag	UNP Q02083
E	24	HIS	-	expression tag	UNP Q02083
E	25	HIS	-	expression tag	UNP Q02083
E	26	HIS	-	expression tag	UNP Q02083
E	27	LYS	-	expression tag	UNP Q02083
E	28	LEU	-	expression tag	UNP Q02083

- Molecule 2 is a protein called N-acylethanolamine-hydrolyzing acid amidase subunit beta.

Mol	Chain	Residues	Atoms						ZeroOcc	AltConf	Trace
2	B	231	Total	C	H	N	O	S	0	0	0
			3637	1177	1800	323	334	3			
2	D	231	Total	C	H	N	O	S	0	1	0
			3658	1182	1813	326	334	3			
2	F	231	Total	C	H	N	O	S	0	1	0
			3659	1182	1814	326	334	3			

- Molecule 3 is an oligosaccharide called 2-acetamido-2-deoxy-beta-D-glucopyranose-(1-4)-2-acetamido-2-deoxy-beta-D-glucopyranose.



Mol	Chain	Residues	Atoms						ZeroOcc	AltConf	Trace
3	G	2	Total	C	H	N	O		0	0	0
			55	16	27	2	10				

- Molecule 4 is 2-acetamido-2-deoxy-beta-D-glucopyranose (three-letter code: NAG) (formula: C<sub>8</sub>H<sub>15</sub>NO<sub>6</sub>).



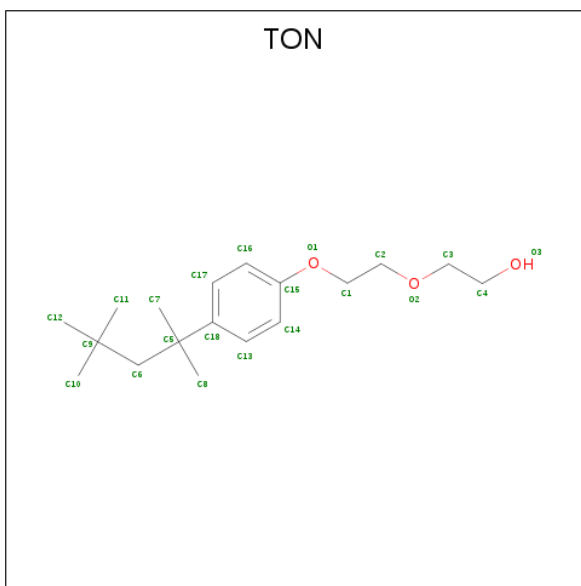
Mol	Chain	Residues	Atoms					ZeroOcc	AltConf
4	A	1	Total	C	H	N	O	0	0
			28	8	14	1	5		
4	B	1	Total	C	H	N	O	0	0
			28	8	14	1	5		
4	C	1	Total	C	H	N	O	0	0
			28	8	14	1	5		
4	D	1	Total	C	H	N	O	0	0
			28	8	14	1	5		
4	E	1	Total	C	H	N	O	0	0
			28	8	14	1	5		

- Molecule 5 is CHLORIDE ION (three-letter code: CL) (formula: Cl).

Mol	Chain	Residues	Atoms		ZeroOcc	AltConf
5	D	4	Total	Cl	0	0
			4	4		
5	E	1	Total	Cl	0	0
			1	1		
5	B	2	Total	Cl	0	0
			2	2		
5	C	3	Total	Cl	0	0
			3	3		
5	A	1	Total	Cl	0	0
			1	1		
5	F	1	Total	Cl	0	0
			1	1		

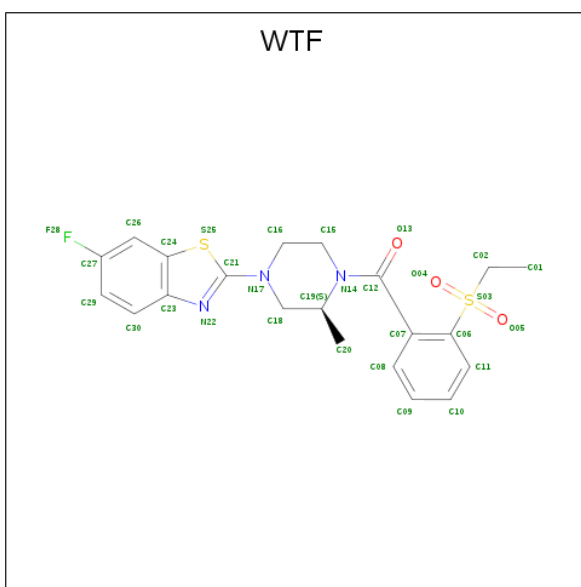
- Molecule 6 is 2-{2-[4-(1,1,3,3-TETRAMETHYLBUTYL)PHENOXY]ETHOXY}ETHANO

L (three-letter code: TON) (formula: C<sub>18</sub>H<sub>30</sub>O<sub>3</sub>).



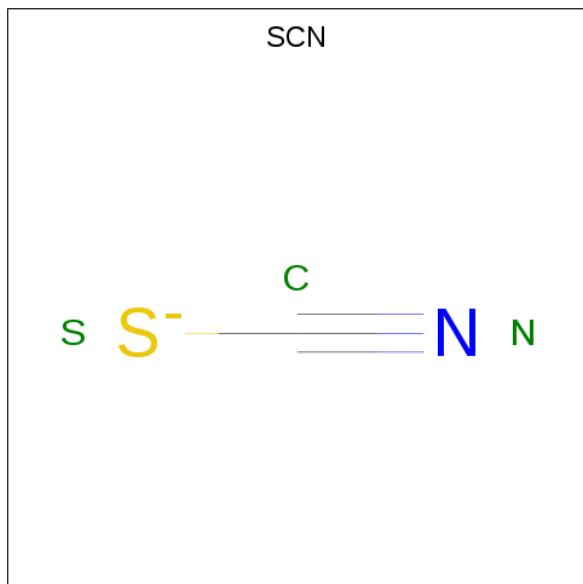
Mol	Chain	Residues	Atoms				ZeroOcc	AltConf
6	A	1	Total	C	H	O	0	0
			51	18	30	3		
6	C	1	Total	C	H	O	0	0
			51	18	30	3		
6	E	1	Total	C	H	O	0	0
			51	18	30	3		

- Molecule 7 is [2-(ethylsulfonyl)phenyl][(2S)-4-(6-fluoro-1,3-benzothiazol-2-yl)-2-methylpiperazin-1-yl]methanone (three-letter code: WTF) (formula: C<sub>21</sub>H<sub>22</sub>FN<sub>3</sub>O<sub>3</sub>S<sub>2</sub>).



Mol	Chain	Residues	Atoms							ZeroOcc	AltConf
7	B	1	Total	C	F	H	N	O	S	0	0
			52	21	1	22	3	3	2		
7	D	1	Total	C	F	H	N	O	S	0	0
			52	21	1	22	3	3	2		
7	F	1	Total	C	F	H	N	O	S	0	0
			52	21	1	22	3	3	2		

- Molecule 8 is THIOCYANATE ION (three-letter code: SCN) (formula: CNS).



Mol	Chain	Residues	Atoms				ZeroOcc	AltConf
8	C	1	Total	C	N	S	0	0
			3	1	1	1		
8	D	1	Total	C	N	S	0	0
			3	1	1	1		
8	D	1	Total	C	N	S	0	0
			3	1	1	1		
8	F	1	Total	C	N	S	0	0
			3	1	1	1		
8	F	1	Total	C	N	S	0	0
			3	1	1	1		
8	F	1	Total	C	N	S	0	0
			3	1	1	1		

- Molecule 9 is water.

Mol	Chain	Residues	Atoms		ZeroOcc	AltConf
9	A	21	Total	O	0	0
			21	21		

*Continued on next page...*

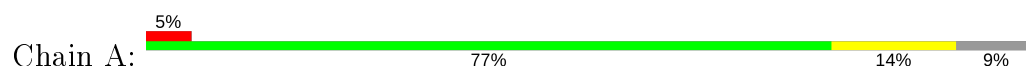
*Continued from previous page...*

Mol	Chain	Residues	Atoms		ZeroOcc	AltConf
9	B	61	Total 61	O 61	0	0
9	C	19	Total 19	O 19	0	0
9	D	44	Total 44	O 44	0	0
9	E	17	Total 17	O 17	0	0
9	F	38	Total 38	O 38	0	0

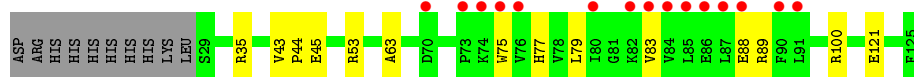
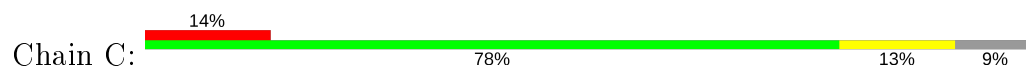
### 3 Residue-property plots [i](#)

These plots are drawn for all protein, RNA, DNA and oligosaccharide chains in the entry. The first graphic for a chain summarises the proportions of the various outlier classes displayed in the second graphic. The second graphic shows the sequence view annotated by issues in geometry and electron density. Residues are color-coded according to the number of geometric quality criteria for which they contain at least one outlier: green = 0, yellow = 1, orange = 2 and red = 3 or more. A red dot above a residue indicates a poor fit to the electron density ( $RSRZ > 2$ ). Stretches of 2 or more consecutive residues without any outlier are shown as a green connector. Residues present in the sample, but not in the model, are shown in grey.

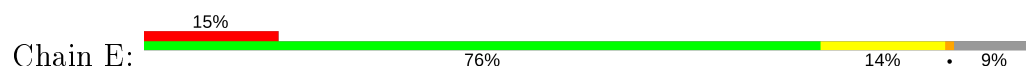
- Molecule 1: N-acylethanolamine-hydrolyzing acid amidase subunit alpha



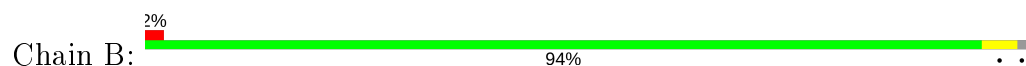
- Molecule 1: N-acylethanolamine-hydrolyzing acid amidase subunit alpha



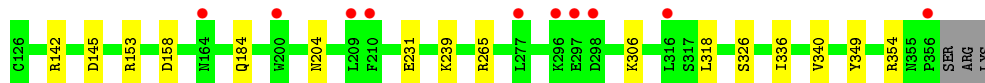
- Molecule 1: N-acylethanolamine-hydrolyzing acid amidase subunit alpha



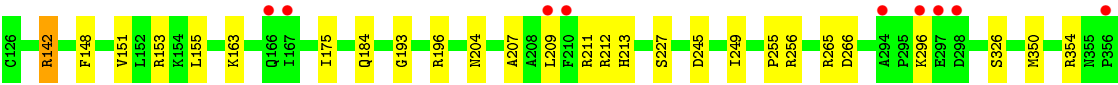
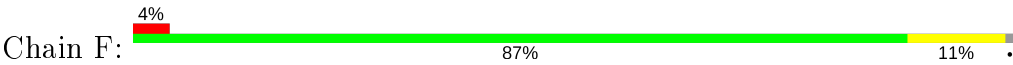
- Molecule 2: N-acylethanolamine-hydrolyzing acid amidase subunit beta



- Molecule 2: N-acylethanolamine-hydrolyzing acid amidase subunit beta



- Molecule 2: N-acylethanolamine-hydrolyzing acid amidase subunit beta



SER  
ARG  
LYS

- Molecule 3: 2-acetamido-2-deoxy-beta-D-glucopyranose-(1-4)-2-acetamido-2-deoxy-beta-D-glucopyranose



NAG1  
NAG2

## 4 Data and refinement statistics

Property	Value	Source
Space group	P 1 21 1	Depositor
Cell constants a, b, c, $\alpha$ , $\beta$ , $\gamma$	76.61Å 99.80Å 92.76Å 90.00° 96.13° 90.00°	Depositor
Resolution (Å)	46.11 – 2.70 48.75 – 2.70	Depositor EDS
% Data completeness (in resolution range)	77.1 (46.11-2.70) 78.6 (48.75-2.70)	Depositor EDS
$R_{merge}$	(Not available)	Depositor
$R_{sym}$	(Not available)	Depositor
$\langle I/\sigma(I) \rangle$ <sup>1</sup>	0.98 (at 2.69Å)	Xtriage
Refinement program	PHENIX (1.13_2998)	Depositor
R, $R_{free}$	0.206 , 0.246 0.206 , 0.246	Depositor DCC
$R_{free}$ test set	1944 reflections (5.76%)	wwPDB-VP
Wilson B-factor (Å <sup>2</sup> )	42.1	Xtriage
Anisotropy	0.151	Xtriage
Bulk solvent $k_{sol}$ (e/Å <sup>3</sup> ), $B_{sol}$ (Å <sup>2</sup> )	0.39 , 40.5	EDS
L-test for twinning <sup>2</sup>	$\langle  L  \rangle = 0.47$ , $\langle L^2 \rangle = 0.30$	Xtriage
Estimated twinning fraction	No twinning to report.	Xtriage
$F_o, F_c$ correlation	0.91	EDS
Total number of atoms	16346	wwPDB-VP
Average B, all atoms (Å <sup>2</sup> )	52.0	wwPDB-VP

Xtriage's analysis on translational NCS is as follows: *The largest off-origin peak in the Patterson function is 4.83% of the height of the origin peak. No significant pseudotranslation is detected.*

<sup>1</sup>Intensities estimated from amplitudes.

<sup>2</sup>Theoretical values of  $\langle |L| \rangle$ ,  $\langle L^2 \rangle$  for acentric reflections are 0.5, 0.333 respectively for untwinned datasets, and 0.375, 0.2 for perfectly twinned datasets.

## 5 Model quality [i](#)

### 5.1 Standard geometry [i](#)

Bond lengths and bond angles in the following residue types are not validated in this section: SCN, TON, NAG, WTF, CL

The Z score for a bond length (or angle) is the number of standard deviations the observed value is removed from the expected value. A bond length (or angle) with  $|Z| > 5$  is considered an outlier worth inspection. RMSZ is the root-mean-square of all Z scores of the bond lengths (or angles).

Mol	Chain	Bond lengths		Bond angles	
		RMSZ	$\# Z  > 5$	RMSZ	$\# Z  > 5$
1	A	0.31	0/792	0.48	0/1079
1	C	0.36	0/792	0.50	0/1079
1	E	0.52	3/792 (0.4%)	0.49	0/1079
2	B	0.30	0/1889	0.48	0/2577
2	D	0.29	0/1900	0.48	0/2591
2	F	0.31	0/1900	0.48	0/2591
All	All	0.33	3/8065 (0.0%)	0.48	0/10996

All (3) bond length outliers are listed below:

Mol	Chain	Res	Type	Atoms	Z	Observed(Å)	Ideal(Å)
1	E	45	GLU	CG-CD	-7.22	1.41	1.51
1	E	45	GLU	CD-OE1	-6.56	1.18	1.25
1	E	45	GLU	CD-OE2	-6.42	1.18	1.25

There are no bond angle outliers.

There are no chirality outliers.

There are no planarity outliers.

### 5.2 Too-close contacts [i](#)

In the following table, the Non-H and H(model) columns list the number of non-hydrogen atoms and hydrogen atoms in the chain respectively. The H(added) column lists the number of hydrogen atoms added and optimized by MolProbity. The Clashes column lists the number of clashes within the asymmetric unit, whereas Symm-Clashes lists symmetry related clashes.

Mol	Chain	Non-H	H(model)	H(added)	Clashes	Symm-Clashes
1	A	772	780	780	13	0
1	C	772	781	781	13	0

*Continued on next page...*

*Continued from previous page...*

Mol	Chain	Non-H	H(model)	H(added)	Clashes	Symm-Clashes
1	E	772	781	781	19	2
2	B	1837	1800	1800	6	0
2	D	1845	1813	1813	11	0
2	F	1845	1814	1814	22	2
3	G	28	27	25	0	0
4	A	14	14	13	0	0
4	B	14	14	13	0	0
4	C	14	14	13	0	0
4	D	14	14	13	0	0
4	E	14	14	13	0	0
5	A	1	0	0	0	0
5	B	2	0	0	0	0
5	C	3	0	0	1	0
5	D	4	0	0	3	0
5	E	1	0	0	0	0
5	F	1	0	0	0	0
6	A	21	30	30	5	0
6	C	21	30	30	3	0
6	E	21	30	30	7	0
7	B	30	22	0	0	0
7	D	30	22	0	1	0
7	F	30	22	0	0	0
8	C	3	0	0	0	0
8	D	6	0	0	0	0
8	F	9	0	0	0	0
9	A	21	0	0	2	0
9	B	61	0	0	0	0
9	C	19	0	0	1	0
9	D	44	0	0	2	0
9	E	17	0	0	1	0
9	F	38	0	0	4	0
All	All	8324	8022	7949	86	2

The all-atom clashscore is defined as the number of clashes found per 1000 atoms (including hydrogen atoms). The all-atom clashscore for this structure is 5.

All (86) close contacts within the same asymmetric unit are listed below, sorted by their clash magnitude.

Atom-1	Atom-2	Interatomic distance (Å)	Clash overlap (Å)
1:A:66:GLN:NE2	1:A:70:ASP:OD2	2.11	0.84
1:A:78:VAL:HG12	1:A:82:LYS:HE3	1.59	0.83

*Continued on next page...*

*Continued from previous page...*

Atom-1	Atom-2	Interatomic distance (Å)	Clash overlap (Å)
1:E:43:VAL:HG12	1:E:45:GLU:OE1	1.86	0.74
2:F:153:ARG:NH2	9:F:502:HOH:O	2.23	0.70
1:E:91:LEU:O	9:E:301:HOH:O	2.10	0.70
2:F:227:SER:O	9:F:501:HOH:O	2.09	0.69
2:F:207:ALA:HA	2:F:211:ARG:HD3	1.76	0.66
2:F:211:ARG:NH2	2:F:266:ASP:OD1	2.29	0.65
1:A:121:GLU:OE2	9:A:301:HOH:O	2.14	0.65
6:A:205:TON:H73	6:A:205:TON:H123	1.81	0.63
1:A:78:VAL:CG1	1:A:82:LYS:HE3	2.29	0.62
1:C:88:GLU:OE1	1:C:100:ARG:NH2	2.33	0.61
2:F:142:ARG:NH2	2:F:193:GLY:O	2.33	0.61
1:C:35:ARG:NH2	5:D:404:CL:CL	2.70	0.61
1:A:121:GLU:OE1	1:A:121:GLU:N	2.33	0.61
6:A:205:TON:H112	6:A:205:TON:C18	2.32	0.59
1:A:86:GLU:OE1	1:A:89:ARG:NH2	2.36	0.58
2:F:211:ARG:NH2	2:F:213:HIS:HE1	2.02	0.58
1:C:121:GLU:N	1:C:121:GLU:OE1	2.38	0.57
1:E:86:GLU:O	1:E:90:PHE:N	2.36	0.57
1:E:83:VAL:O	1:E:83:VAL:HG12	2.04	0.57
2:D:326:SER:OG	2:D:354:ARG:NH2	2.32	0.56
6:C:206:TON:H123	6:C:206:TON:H73	1.88	0.55
2:F:350:MET:HA	2:F:350:MET:HE3	1.89	0.54
2:D:145:ASP:OD2	9:D:501:HOH:O	2.18	0.54
1:E:43:VAL:CG1	1:E:45:GLU:OE1	2.56	0.54
1:A:83:VAL:O	1:A:83:VAL:HG12	2.08	0.54
2:D:158:ASP:OD2	5:D:404:CL:CL	2.63	0.53
1:E:85:LEU:HD12	1:E:86:GLU:HG2	1.90	0.53
6:E:203:TON:H73	6:E:203:TON:H123	1.92	0.51
1:C:79:LEU:O	1:C:83:VAL:HG23	2.11	0.51
1:E:67:VAL:HG12	1:E:125:PHE:CE1	2.47	0.51
1:C:43:VAL:HG12	1:C:45:GLU:OE1	2.11	0.50
2:D:184:GLN:NE2	9:D:503:HOH:O	2.34	0.50
1:E:83:VAL:HG13	1:E:86:GLU:HB2	1.93	0.49
2:F:155:LEU:HB3	2:F:175:ILE:HG22	1.93	0.49
6:E:203:TON:C17	6:E:203:TON:H112	2.43	0.48
1:E:85:LEU:CD1	1:E:86:GLU:HG2	2.43	0.48
1:A:74:LYS:CE	2:D:231:GLU:OE2	2.62	0.48
1:E:121:GLU:N	1:E:121:GLU:OE1	2.46	0.48
1:C:83:VAL:O	1:C:83:VAL:HG12	2.13	0.48
6:A:205:TON:C12	6:A:205:TON:H73	2.44	0.47
2:D:349:TYR:HD2	5:D:404:CL:CL	2.35	0.47

*Continued on next page...*

*Continued from previous page...*

Atom-1	Atom-2	Interatomic distance (Å)	Clash overlap (Å)
1:C:43:VAL:CG1	1:C:45:GLU:OE1	2.63	0.47
1:E:90:PHE:HD1	2:F:212:ARG:HG2	1.79	0.47
1:A:70:ASP:OD1	2:D:239:LYS:NZ	2.43	0.47
1:A:71:ARG:NH1	9:A:303:HOH:O	2.47	0.46
2:F:255:PRO:O	2:F:256:ARG:HB2	2.15	0.46
2:F:204:ASN:OD1	2:F:265:ARG:NH2	2.42	0.46
1:E:124:VAL:CG1	6:E:203:TON:H22	2.46	0.45
1:E:71:ARG:HD2	1:E:124:VAL:O	2.16	0.45
1:C:89:ARG:NH1	1:C:89:ARG:HG3	2.32	0.45
1:E:63:ALA:HB1	2:F:151:VAL:HG11	1.98	0.44
1:C:63:ALA:HB3	7:D:408:WTF:F28	2.07	0.44
1:E:90:PHE:CE1	2:F:212:ARG:CZ	3.00	0.44
2:F:211:ARG:CZ	2:F:213:HIS:CE1	3.01	0.44
6:E:203:TON:H121	2:F:209:LEU:HG	2.00	0.44
1:C:100:ARG:NH1	9:C:302:HOH:O	2.43	0.43
1:A:75:TRP:CZ2	6:A:205:TON:H21	2.53	0.43
2:B:327:VAL:HG13	1:E:58:ASP:HB3	2.00	0.43
6:A:205:TON:H112	6:A:205:TON:C13	2.49	0.43
2:B:292:LYS:HB3	2:B:293:PRO:HD2	2.00	0.43
1:C:53:ARG:HD3	5:C:203:CL:CL	2.56	0.43
6:C:206:TON:H123	6:C:206:TON:C7	2.48	0.43
1:A:80:ILE:O	1:A:84:VAL:HG23	2.19	0.43
1:A:78:VAL:O	1:A:82:LYS:HG3	2.18	0.43
2:F:184:GLN:NE2	9:F:507:HOH:O	2.51	0.43
2:D:318:LEU:HD22	2:D:340:VAL:HB	2.00	0.42
2:F:196:ARG:HD3	2:F:245:ASP:HB3	2.01	0.42
2:D:306:LYS:HE3	2:D:306:LYS:HB2	1.91	0.42
2:F:326:SER:OG	2:F:354:ARG:NH2	2.47	0.42
2:B:142:ARG:NH2	2:B:193:GLY:O	2.48	0.42
1:C:43:VAL:CG1	1:C:44:PRO:HD2	2.50	0.42
2:F:249:ILE:HD12	2:F:249:ILE:N	2.34	0.42
1:E:67:VAL:HG23	2:F:148:PHE:CZ	2.55	0.42
1:C:75:TRP:CZ2	6:C:206:TON:H41	2.55	0.41
6:E:203:TON:H123	6:E:203:TON:C7	2.50	0.41
1:E:67:VAL:CG2	2:F:148:PHE:CE2	3.03	0.41
1:E:87:LEU:HD11	6:E:203:TON:H122	2.01	0.41
2:D:204:ASN:OD1	2:D:265:ARG:NH2	2.45	0.41
2:B:214:ILE:HD11	2:B:219:LEU:HB2	2.02	0.41
2:F:163:LYS:NZ	9:F:505:HOH:O	2.36	0.41
2:B:155:LEU:HB3	2:B:175:ILE:HG22	2.03	0.40
2:B:126:CYS:N	2:B:300:ARG:HH12	2.19	0.40

*Continued on next page...*

Continued from previous page...

Atom-1	Atom-2	Interatomic distance (Å)	Clash overlap (Å)
2:D:153[B]:ARG:HG2	2:D:336:ILE:HG23	2.03	0.40
6:E:203:TON:H112	6:E:203:TON:C18	2.51	0.40

All (2) symmetry-related close contacts are listed below. The label for Atom-2 includes the symmetry operator and encoded unit-cell translations to be applied.

Atom-1	Atom-2	Interatomic distance (Å)	Clash overlap (Å)
1:E:45:GLU:OE2	2:F:296:LYS:HZ1[2_746]	1.19	0.41
1:E:45:GLU:OE2	2:F:296:LYS:NZ[2_746]	1.97	0.23

## 5.3 Torsion angles [i](#)

### 5.3.1 Protein backbone [i](#)

In the following table, the Percentiles column shows the percent Ramachandran outliers of the chain as a percentile score with respect to all X-ray entries followed by that with respect to entries of similar resolution.

The Analysed column shows the number of residues for which the backbone conformation was analysed, and the total number of residues.

Mol	Chain	Analysed	Favoured	Allowed	Outliers	Percentiles	
1	A	95/107 (89%)	93 (98%)	2 (2%)	0	100	100
1	C	95/107 (89%)	93 (98%)	2 (2%)	0	100	100
1	E	95/107 (89%)	93 (98%)	2 (2%)	0	100	100
2	B	229/234 (98%)	221 (96%)	8 (4%)	0	100	100
2	D	230/234 (98%)	221 (96%)	9 (4%)	0	100	100
2	F	230/234 (98%)	220 (96%)	10 (4%)	0	100	100
All	All	974/1023 (95%)	941 (97%)	33 (3%)	0	100	100

There are no Ramachandran outliers to report.

### 5.3.2 Protein sidechains [i](#)

In the following table, the Percentiles column shows the percent sidechain outliers of the chain as a percentile score with respect to all X-ray entries followed by that with respect to entries of similar resolution.

The Analysed column shows the number of residues for which the sidechain conformation was analysed, and the total number of residues.

Mol	Chain	Analysed	Rotameric	Outliers	Percentiles	
1	A	86/96 (90%)	84 (98%)	2 (2%)	50	78
1	C	86/96 (90%)	85 (99%)	1 (1%)	71	88
1	E	86/96 (90%)	85 (99%)	1 (1%)	71	88
2	B	194/197 (98%)	193 (100%)	1 (0%)	88	96
2	D	195/197 (99%)	194 (100%)	1 (0%)	88	96
2	F	195/197 (99%)	194 (100%)	1 (0%)	88	96
All	All	842/879 (96%)	835 (99%)	7 (1%)	81	93

All (7) residues with a non-rotameric sidechain are listed below:

Mol	Chain	Res	Type
1	A	77	HIS
1	A	103	CYS
2	B	142	ARG
1	C	77	HIS
2	D	142	ARG
1	E	77	HIS
2	F	142	ARG

Some sidechains can be flipped to improve hydrogen bonding and reduce clashes. All (4) such sidechains are listed below:

Mol	Chain	Res	Type
1	A	66	GLN
2	B	184	GLN
2	F	184	GLN
2	F	213	HIS

### 5.3.3 RNA ⓘ

There are no RNA molecules in this entry.

## 5.4 Non-standard residues in protein, DNA, RNA chains ⓘ

There are no non-standard protein/DNA/RNA residues in this entry.

## 5.5 Carbohydrates ⓘ

2 monosaccharides are modelled in this entry.

In the following table, the Counts columns list the number of bonds (or angles) for which Mogul statistics could be retrieved, the number of bonds (or angles) that are observed in the model and the number of bonds (or angles) that are defined in the Chemical Component Dictionary. The Link column lists molecule types, if any, to which the group is linked. The Z score for a bond length (or angle) is the number of standard deviations the observed value is removed from the expected value. A bond length (or angle) with  $|Z| > 2$  is considered an outlier worth inspection. RMSZ is the root-mean-square of all Z scores of the bond lengths (or angles).

Mol	Type	Chain	Res	Link	Bond lengths			Bond angles		
					Counts	RMSZ	# Z  > 2	Counts	RMSZ	# Z  > 2
3	NAG	G	1	1,3	14,14,15	0.77	1 (7%)	17,19,21	0.50	0
3	NAG	G	2	3	14,14,15	0.26	0	17,19,21	0.52	0

In the following table, the Chirals column lists the number of chiral outliers, the number of chiral centers analysed, the number of these observed in the model and the number defined in the Chemical Component Dictionary. Similar counts are reported in the Torsion and Rings columns. '-' means no outliers of that kind were identified.

Mol	Type	Chain	Res	Link	Chirals	Torsions	Rings
3	NAG	G	1	1,3	-	2/6/23/26	0/1/1/1
3	NAG	G	2	3	-	0/6/23/26	0/1/1/1

All (1) bond length outliers are listed below:

Mol	Chain	Res	Type	Atoms	Z	Observed(Å)	Ideal(Å)
3	G	1	NAG	O5-C1	2.78	1.48	1.43

There are no bond angle outliers.

There are no chirality outliers.

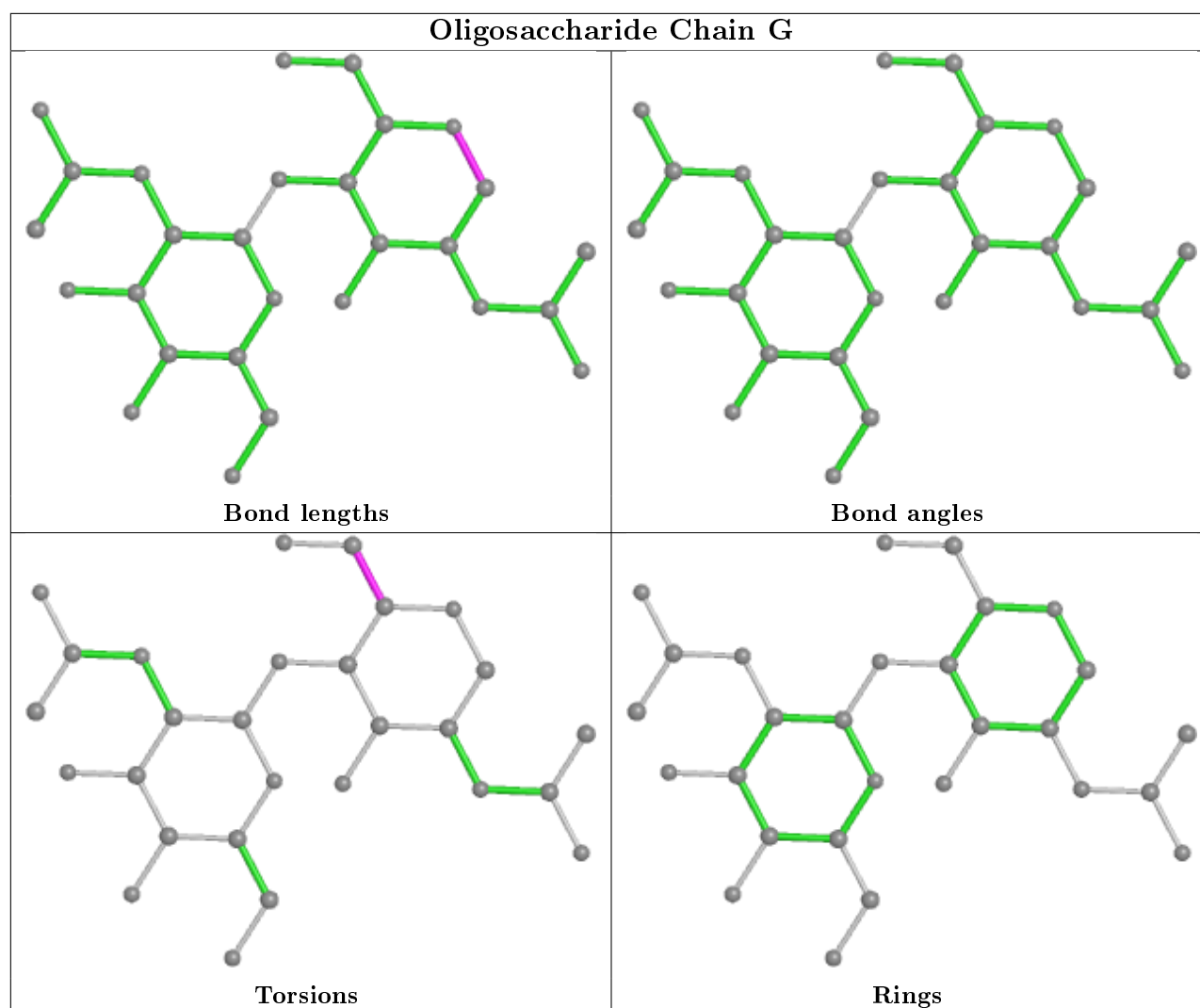
All (2) torsion outliers are listed below:

Mol	Chain	Res	Type	Atoms
3	G	1	NAG	C4-C5-C6-O6
3	G	1	NAG	O5-C5-C6-O6

There are no ring outliers.

No monomer is involved in short contacts.

The following is a two-dimensional graphical depiction of Mogul quality analysis of bond lengths, bond angles, torsion angles, and ring geometry for oligosaccharide.



## 5.6 Ligand geometry ⓘ

Of 29 ligands modelled in this entry, 12 are monoatomic - leaving 17 for Mogul analysis.

In the following table, the Counts columns list the number of bonds (or angles) for which Mogul statistics could be retrieved, the number of bonds (or angles) that are observed in the model and the number of bonds (or angles) that are defined in the Chemical Component Dictionary. The Link column lists molecule types, if any, to which the group is linked. The Z score for a bond length (or angle) is the number of standard deviations the observed value is removed from the expected value. A bond length (or angle) with  $|Z| > 2$  is considered an outlier worth inspection. RMSZ is the root-mean-square of all Z scores of the bond lengths (or angles).

Mol	Type	Chain	Res	Link	Bond lengths			Bond angles		
					Counts	RMSZ	$\# Z  > 2$	Counts	RMSZ	$\# Z  > 2$
6	TON	E	203	-	21,21,21	0.89	1 (4%)	29,29,29	0.72	0
7	WTF	D	408	-	30,33,33	3.30	16 (53%)	42,49,49	3.08	15 (35%)
8	SCN	C	205	-	1,2,2	0.95	0	0,1,1	0.00	-

Mol	Type	Chain	Res	Link	Bond lengths			Bond angles		
					Counts	RMSZ	# Z  > 2	Counts	RMSZ	# Z  > 2
8	SCN	D	406	-	1,2,2	0.83	0	0,1,1	0.00	-
8	SCN	F	403	-	1,2,2	0.85	0	0,1,1	0.00	-
6	TON	C	206	-	21,21,21	0.89	1 (4%)	29,29,29	0.67	0
4	NAG	D	401	2	14,14,15	0.85	1 (7%)	17,19,21	0.55	0
4	NAG	C	201	1	14,14,15	0.40	0	17,19,21	0.42	0
7	WTF	F	405	-	30,33,33	3.30	17 (56%)	42,49,49	2.96	14 (33%)
4	NAG	B	401	2	14,14,15	0.19	0	17,19,21	0.58	0
4	NAG	A	203	1	14,14,15	0.17	0	17,19,21	0.40	0
4	NAG	E	201	1	14,14,15	0.41	0	17,19,21	0.47	0
8	SCN	F	404	-	1,2,2	1.07	0	0,1,1	0.00	-
7	WTF	B	404	-	30,33,33	3.18	17 (56%)	42,49,49	2.99	15 (35%)
6	TON	A	205	-	21,21,21	0.83	1 (4%)	29,29,29	0.75	0
8	SCN	F	402	-	1,2,2	0.92	0	0,1,1	0.00	-
8	SCN	D	407	-	1,2,2	0.85	0	0,1,1	0.00	-

In the following table, the Chirals column lists the number of chiral outliers, the number of chiral centers analysed, the number of these observed in the model and the number defined in the Chemical Component Dictionary. Similar counts are reported in the Torsion and Rings columns. '-' means no outliers of that kind were identified.

Mol	Type	Chain	Res	Link	Chirals	Torsions	Rings
6	TON	E	203	-	-	1/19/19/19	0/1/1/1
7	WTF	D	408	-	-	6/19/34/34	0/4/4/4
7	WTF	B	404	-	-	5/19/34/34	0/4/4/4
6	TON	C	206	-	-	6/19/19/19	0/1/1/1
4	NAG	D	401	2	-	0/6/23/26	0/1/1/1
4	NAG	C	201	1	-	2/6/23/26	0/1/1/1
7	WTF	F	405	-	-	6/19/34/34	0/4/4/4
4	NAG	B	401	2	-	2/6/23/26	0/1/1/1
4	NAG	E	201	1	-	0/6/23/26	0/1/1/1
6	TON	A	205	-	-	4/19/19/19	0/1/1/1
4	NAG	A	203	1	-	2/6/23/26	0/1/1/1

All (54) bond length outliers are listed below:

Mol	Chain	Res	Type	Atoms	Z	Observed(Å)	Ideal(Å)
7	F	405	WTF	C21-N17	8.96	1.46	1.32
7	D	408	WTF	C21-N17	8.67	1.45	1.32
7	B	404	WTF	C21-N17	8.06	1.44	1.32

*Continued on next page...*

*Continued from previous page...*

Mol	Chain	Res	Type	Atoms	Z	Observed(Å)	Ideal(Å)
7	D	408	WTF	C26-C27	6.71	1.47	1.36
7	B	404	WTF	C26-C27	6.48	1.46	1.36
7	F	405	WTF	C26-C27	6.26	1.46	1.36
7	D	408	WTF	C12-N14	6.25	1.49	1.34
7	B	404	WTF	C12-N14	5.95	1.48	1.34
7	F	405	WTF	C12-N14	5.94	1.48	1.34
7	F	405	WTF	C07-C12	5.53	1.59	1.50
7	D	408	WTF	C07-C12	5.34	1.58	1.50
7	B	404	WTF	C07-C12	4.86	1.58	1.50
7	F	405	WTF	C02-S03	4.70	1.83	1.77
7	D	408	WTF	C02-S03	4.65	1.83	1.77
7	B	404	WTF	C02-S03	4.44	1.83	1.77
7	D	408	WTF	C29-C27	4.32	1.45	1.37
7	F	405	WTF	C29-C27	4.28	1.45	1.37
7	B	404	WTF	C29-C27	4.22	1.45	1.37
7	D	408	WTF	C06-S03	3.74	1.87	1.78
7	D	408	WTF	C19-N14	-3.72	1.43	1.47
7	F	405	WTF	C16-N17	3.70	1.52	1.46
7	F	405	WTF	C19-N14	-3.67	1.43	1.47
7	B	404	WTF	C06-S03	3.62	1.86	1.78
7	B	404	WTF	C16-N17	3.59	1.52	1.46
7	D	408	WTF	C16-N17	3.56	1.52	1.46
7	B	404	WTF	C19-N14	-3.43	1.43	1.47
7	F	405	WTF	C30-C29	3.34	1.43	1.36
7	F	405	WTF	C06-S03	3.33	1.86	1.78
7	B	404	WTF	C30-C29	3.23	1.43	1.36
7	D	408	WTF	C30-C29	3.21	1.43	1.36
4	D	401	NAG	O5-C1	2.87	1.48	1.43
6	E	203	TON	O1-C15	2.69	1.43	1.37
7	B	404	WTF	C30-C23	2.69	1.46	1.41
7	F	405	WTF	C30-C23	2.68	1.46	1.41
7	F	405	WTF	F28-C27	2.62	1.42	1.36
6	C	206	TON	O1-C15	2.54	1.43	1.37
7	D	408	WTF	F28-C27	2.54	1.42	1.36
7	F	405	WTF	C18-N17	2.53	1.51	1.46
7	F	405	WTF	C15-N14	-2.51	1.42	1.47
7	B	404	WTF	C18-N17	2.51	1.51	1.46
7	B	404	WTF	F28-C27	2.51	1.42	1.36
7	B	404	WTF	C15-N14	-2.50	1.42	1.47
7	D	408	WTF	C26-C24	2.47	1.43	1.38
7	D	408	WTF	C15-N14	-2.47	1.42	1.47
7	D	408	WTF	C18-N17	2.46	1.51	1.46

*Continued on next page...*

*Continued from previous page...*

Mol	Chain	Res	Type	Atoms	Z	Observed(Å)	Ideal(Å)
7	F	405	WTF	O13-C12	-2.44	1.17	1.22
7	D	408	WTF	C30-C23	2.44	1.46	1.41
7	B	404	WTF	O13-C12	-2.43	1.17	1.22
7	D	408	WTF	O13-C12	-2.40	1.17	1.22
6	A	205	TON	O1-C15	2.39	1.43	1.37
7	B	404	WTF	C26-C24	2.25	1.43	1.38
7	F	405	WTF	C23-N22	2.16	1.46	1.38
7	F	405	WTF	C26-C24	2.15	1.42	1.38
7	B	404	WTF	C23-N22	2.01	1.45	1.38

All (44) bond angle outliers are listed below:

Mol	Chain	Res	Type	Atoms	Z	Observed(°)	Ideal(°)
7	D	408	WTF	O05-S03-O04	-14.91	101.01	118.44
7	B	404	WTF	O05-S03-O04	-14.40	101.61	118.44
7	F	405	WTF	O05-S03-O04	-14.14	101.92	118.44
7	D	408	WTF	C02-S03-C06	5.36	114.19	105.55
7	D	408	WTF	C16-C15-N14	5.21	120.15	110.46
7	F	405	WTF	C16-C15-N14	4.78	119.36	110.46
7	D	408	WTF	C15-C16-N17	4.63	119.70	110.70
7	F	405	WTF	C02-S03-C06	4.63	113.02	105.55
7	B	404	WTF	O05-S03-C02	4.57	112.34	108.29
7	F	405	WTF	O05-S03-C02	4.06	111.89	108.29
7	F	405	WTF	C15-C16-N17	3.76	118.01	110.70
7	B	404	WTF	C19-C18-N17	3.70	116.74	110.88
7	D	408	WTF	C23-C24-S25	-3.61	107.06	111.85
7	B	404	WTF	C23-C24-S25	-3.59	107.09	111.85
7	F	405	WTF	C23-C24-S25	-3.55	107.15	111.85
7	B	404	WTF	C02-S03-C06	3.37	110.98	105.55
7	B	404	WTF	C16-C15-N14	3.33	116.66	110.46
7	B	404	WTF	C26-C24-S25	3.26	131.63	125.10
7	B	404	WTF	C06-C07-C12	-3.26	118.20	123.59
7	D	408	WTF	C26-C24-S25	3.24	131.59	125.10
7	B	404	WTF	C18-C19-N14	3.21	116.37	109.38
7	F	405	WTF	C24-C23-N22	3.11	115.29	108.04
7	F	405	WTF	O04-S03-C02	3.11	111.05	108.29
7	B	404	WTF	O04-S03-C06	3.09	112.23	107.83
7	B	404	WTF	C07-C12-N14	3.08	122.17	117.92
7	B	404	WTF	C24-C23-N22	3.06	115.16	108.04
7	D	408	WTF	C24-C23-N22	3.03	115.10	108.04
7	F	405	WTF	C26-C24-S25	2.91	130.92	125.10
7	D	408	WTF	C18-C19-N14	2.78	115.45	109.38

*Continued on next page...*

*Continued from previous page...*

Mol	Chain	Res	Type	Atoms	Z	Observed(°)	Ideal(°)
7	F	405	WTF	C06-C07-C12	-2.73	119.08	123.59
7	D	408	WTF	O04-S03-C06	2.35	111.18	107.83
7	F	405	WTF	C29-C27-C26	-2.34	120.64	123.23
7	D	408	WTF	O05-S03-C02	2.28	110.31	108.29
7	F	405	WTF	C07-C12-N14	2.20	120.96	117.92
7	D	408	WTF	C06-C07-C12	-2.19	119.96	123.59
7	B	404	WTF	C08-C07-C06	2.19	120.40	118.05
7	F	405	WTF	C18-C19-N14	2.19	114.16	109.38
7	B	404	WTF	O04-S03-C02	2.13	110.18	108.29
7	B	404	WTF	C30-C23-N22	-2.12	124.63	130.78
7	D	408	WTF	C30-C23-N22	-2.10	124.68	130.78
7	F	405	WTF	C18-N17-C21	2.07	124.47	120.42
7	D	408	WTF	C07-C12-N14	2.03	120.73	117.92
7	D	408	WTF	O04-S03-C02	2.03	110.09	108.29
7	D	408	WTF	C08-C07-C06	2.01	120.21	118.05

There are no chirality outliers.

All (34) torsion outliers are listed below:

Mol	Chain	Res	Type	Atoms
7	D	408	WTF	C01-C02-S03-O04
7	D	408	WTF	C01-C02-S03-O05
7	D	408	WTF	C01-C02-S03-C06
7	D	408	WTF	S25-C21-N17-C18
7	B	404	WTF	C01-C02-S03-C06
7	B	404	WTF	S25-C21-N17-C16
7	B	404	WTF	S25-C21-N17-C18
7	F	405	WTF	C01-C02-S03-O04
7	F	405	WTF	C01-C02-S03-C06
7	F	405	WTF	S25-C21-N17-C16
7	F	405	WTF	S25-C21-N17-C18
4	C	201	NAG	O5-C5-C6-O6
4	C	201	NAG	C4-C5-C6-O6
4	A	203	NAG	C4-C5-C6-O6
6	E	203	TON	O1-C1-C2-O2
4	A	203	NAG	O5-C5-C6-O6
4	B	401	NAG	O5-C5-C6-O6
4	B	401	NAG	C4-C5-C6-O6
6	C	206	TON	C16-C15-O1-C1
6	A	205	TON	C16-C15-O1-C1
6	C	206	TON	C14-C15-O1-C1
6	A	205	TON	C14-C15-O1-C1

*Continued on next page...*

*Continued from previous page...*

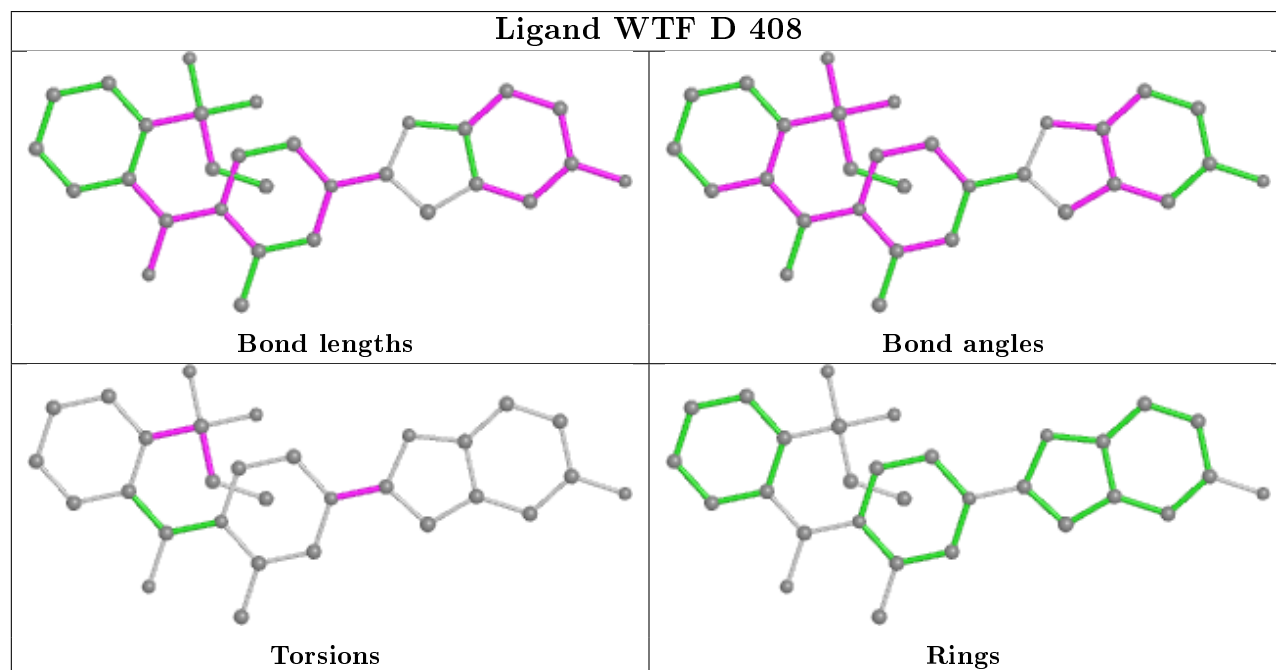
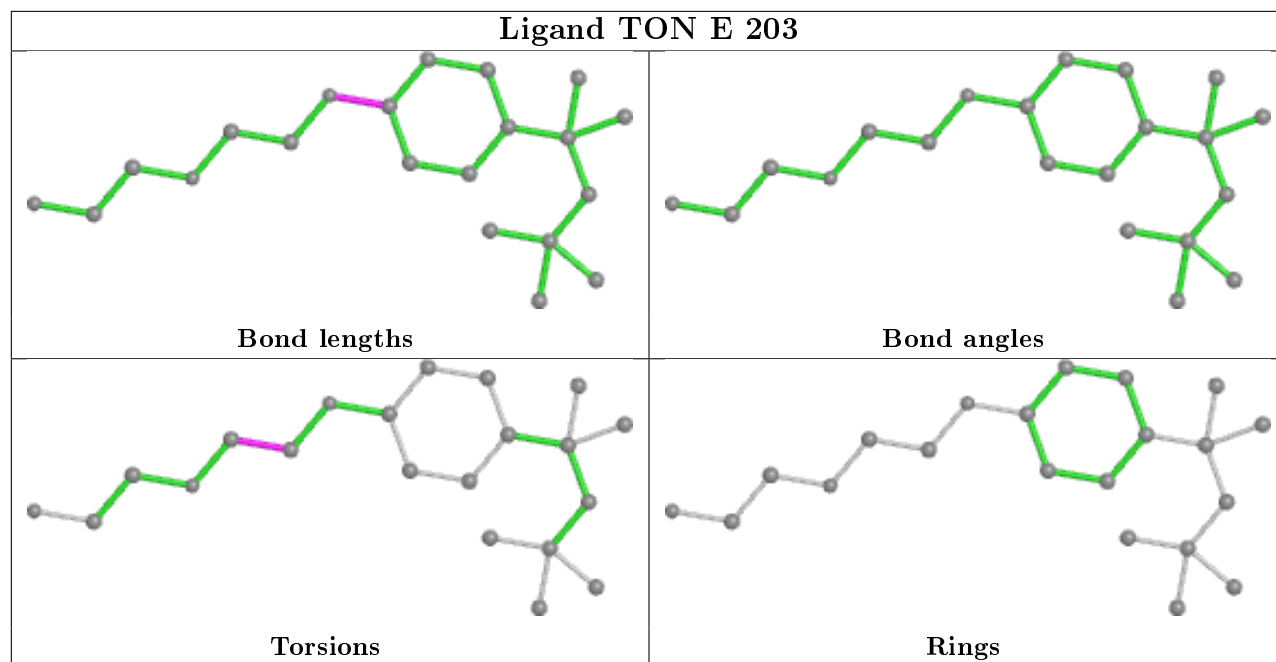
Mol	Chain	Res	Type	Atoms
7	F	405	WTF	C01-C02-S03-O05
6	C	206	TON	C1-C2-O2-C3
6	A	205	TON	C4-C3-O2-C2
6	A	205	TON	O1-C1-C2-O2
6	C	206	TON	C2-C1-O1-C15
6	C	206	TON	O2-C3-C4-O3
7	B	404	WTF	C01-C02-S03-O04
7	B	404	WTF	C01-C02-S03-O05
7	D	408	WTF	C07-C06-S03-O05
7	F	405	WTF	C07-C06-S03-O05
7	D	408	WTF	C11-C06-S03-O05
6	C	206	TON	C4-C3-O2-C2

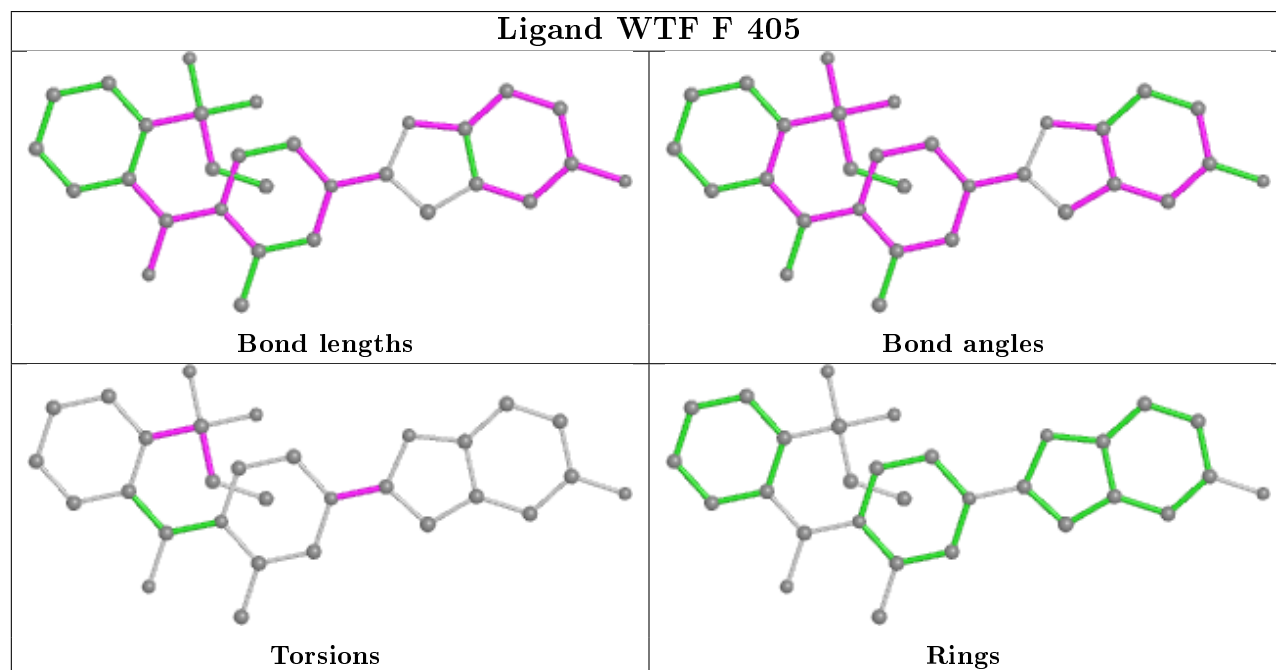
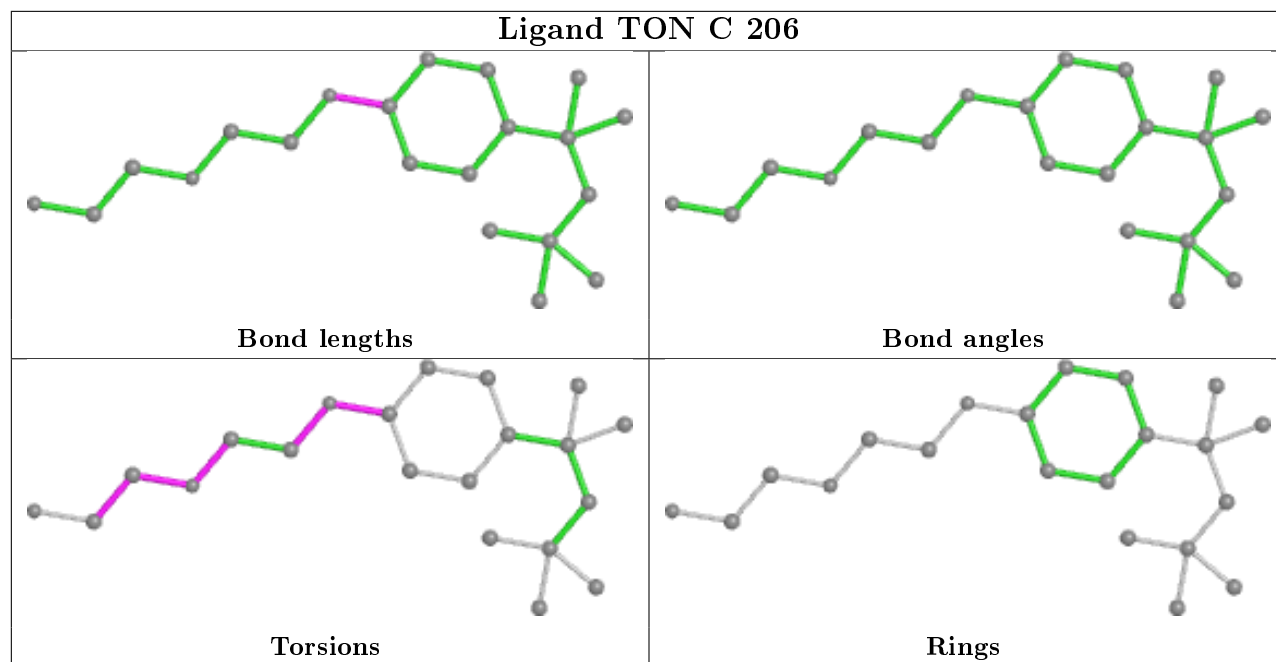
There are no ring outliers.

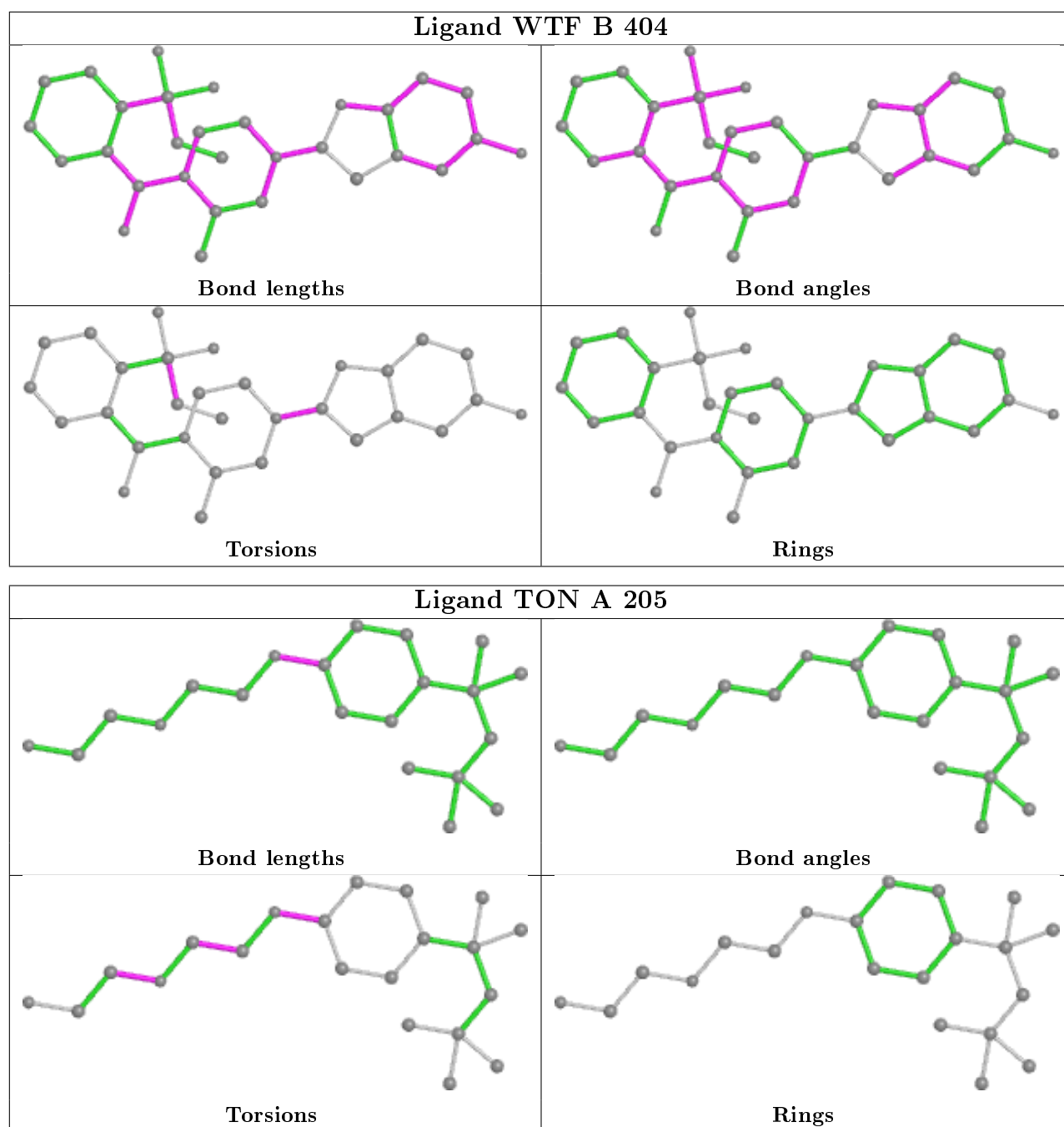
4 monomers are involved in 16 short contacts:

Mol	Chain	Res	Type	Clashes	Symm-Clashes
6	E	203	TON	7	0
7	D	408	WTF	1	0
6	C	206	TON	3	0
6	A	205	TON	5	0

The following is a two-dimensional graphical depiction of Mogul quality analysis of bond lengths, bond angles, torsion angles, and ring geometry for all instances of the Ligand of Interest. In addition, ligands with molecular weight > 250 and outliers as shown on the validation Tables will also be included. For torsion angles, if less than 5% of the Mogul distribution of torsion angles is within 10 degrees of the torsion angle in question, then that torsion angle is considered an outlier. Any bond that is central to one or more torsion angles identified as an outlier by Mogul will be highlighted in the graph. For rings, the root-mean-square deviation (RMSD) between the ring in question and similar rings identified by Mogul is calculated over all ring torsion angles. If the average RMSD is greater than 60 degrees and the minimal RMSD between the ring in question and any Mogul-identified rings is also greater than 60 degrees, then that ring is considered an outlier. The outliers are highlighted in purple. The color gray indicates Mogul did not find sufficient equivalents in the CSD to analyse the geometry.







## 5.7 Other polymers [i](#)

There are no such residues in this entry.

## 5.8 Polymer linkage issues [i](#)

There are no chain breaks in this entry.

## 6 Fit of model and data ⓘ

### 6.1 Protein, DNA and RNA chains ⓘ

In the following table, the column labelled ‘#RSRZ> 2’ contains the number (and percentage) of RSRZ outliers, followed by percent RSRZ outliers for the chain as percentile scores relative to all X-ray entries and entries of similar resolution. The OWAB column contains the minimum, median, 95<sup>th</sup> percentile and maximum values of the occupancy-weighted average B-factor per residue. The column labelled ‘Q< 0.9’ lists the number of (and percentage) of residues with an average occupancy less than 0.9.

Mol	Chain	Analysed	<RSRZ>	#RSRZ>2	OWAB(Å <sup>2</sup> )	Q<0.9
1	A	97/107 (90%)	0.42	5 (5%) 27 25	31, 44, 95, 120	0
1	C	97/107 (90%)	0.68	15 (15%) 2 1	31, 49, 111, 124	0
1	E	97/107 (90%)	0.83	16 (16%) 1 1	37, 56, 103, 115	0
2	B	231/234 (98%)	-0.00	4 (1%) 70 72	24, 35, 61, 84	0
2	D	231/234 (98%)	0.16	10 (4%) 35 33	27, 41, 66, 96	0
2	F	231/234 (98%)	0.26	9 (3%) 39 38	28, 43, 67, 107	0
All	All	984/1023 (96%)	0.29	59 (5%) 21 20	24, 42, 86, 124	0

All (59) RSRZ outliers are listed below:

Mol	Chain	Res	Type	RSRZ
1	C	87	LEU	10.5
1	C	90	PHE	7.8
1	A	87	LEU	6.3
1	C	86	GLU	5.9
2	F	297	GLU	5.5
1	A	86	GLU	5.3
2	F	294	ALA	5.2
1	E	87	LEU	5.1
1	E	86	GLU	5.0
1	E	80	ILE	4.6
1	A	90	PHE	4.5
1	C	76	VAL	4.5
1	E	83	VAL	4.4
1	C	75	TRP	4.3
1	E	82	LYS	4.2
1	E	88	GLU	4.1
2	F	298	ASP	4.1
1	E	90	PHE	3.7
1	E	70	ASP	3.7

*Continued on next page...*

*Continued from previous page...*

Mol	Chain	Res	Type	RSRZ
1	E	85	LEU	3.5
2	B	297	GLU	3.5
1	C	85	LEU	3.5
1	C	84	VAL	3.4
1	E	84	VAL	3.4
1	E	78	VAL	3.3
2	D	277	LEU	3.3
2	D	210	PHE	3.3
1	C	88	GLU	3.2
1	C	74	LYS	3.2
2	F	209	LEU	3.1
2	F	356	PRO	3.1
2	D	200	TRP	3.1
2	D	297	GLU	3.1
1	C	73	PRO	3.0
1	A	29	SER	3.0
1	C	70	ASP	2.9
1	C	82	LYS	2.8
2	F	296	LYS	2.8
2	D	209	LEU	2.7
2	D	296	LYS	2.7
2	D	356	PRO	2.6
1	A	82	LYS	2.5
2	F	210	PHE	2.4
1	E	79	LEU	2.4
2	B	296	LYS	2.4
1	E	107	ASN	2.3
2	D	298	ASP	2.3
2	D	164	ASN	2.3
2	F	166	GLN	2.2
1	C	83	VAL	2.2
1	C	80	ILE	2.2
1	E	74	LYS	2.1
2	B	162	LEU	2.1
2	F	167	ILE	2.1
1	C	91	LEU	2.1
1	E	89	ARG	2.0
2	B	200	TRP	2.0
1	E	114	LEU	2.0
2	D	316	LEU	2.0

## 6.2 Non-standard residues in protein, DNA, RNA chains [i](#)

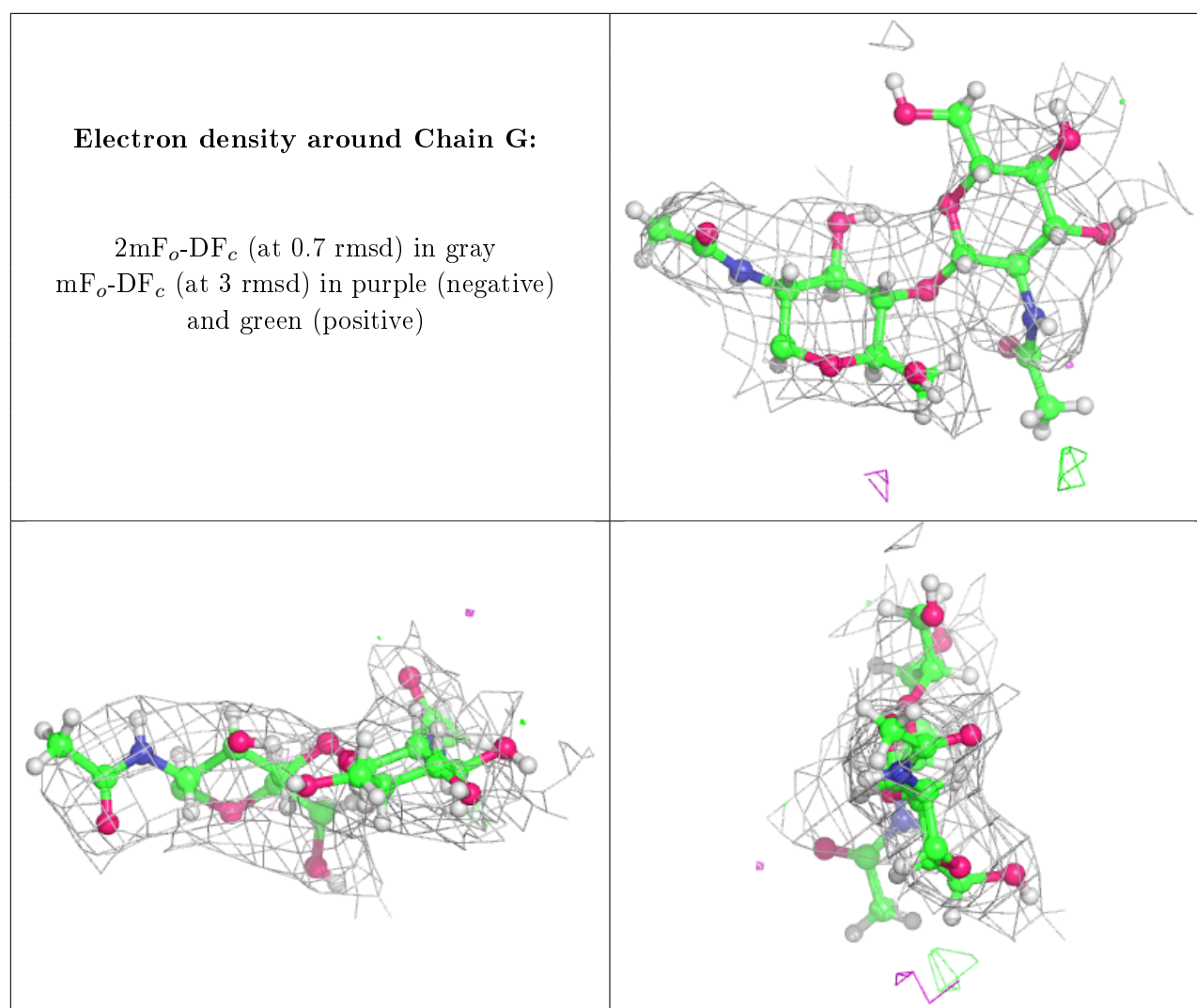
There are no non-standard protein/DNA/RNA residues in this entry.

## 6.3 Carbohydrates [i](#)

In the following table, the Atoms column lists the number of modelled atoms in the group and the number defined in the chemical component dictionary. The B-factors column lists the minimum, median, 95<sup>th</sup> percentile and maximum values of B factors of atoms in the group. The column labelled 'Q< 0.9' lists the number of atoms with occupancy less than 0.9.

Mol	Type	Chain	Res	Atoms	RSCC	RSR	B-factors(Å <sup>2</sup> )	Q<0.9
3	NAG	G	2	14/15	0.69	0.36	90,111,133,137	0
3	NAG	G	1	14/15	0.92	0.26	48,66,82,91	0

The following is a graphical depiction of the model fit to experimental electron density for oligosaccharide. Each fit is shown from different orientation to approximate a three-dimensional view.



## 6.4 Ligands ⓘ

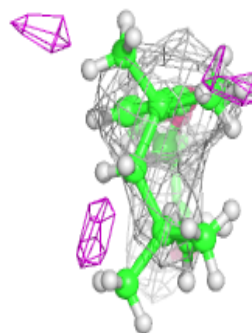
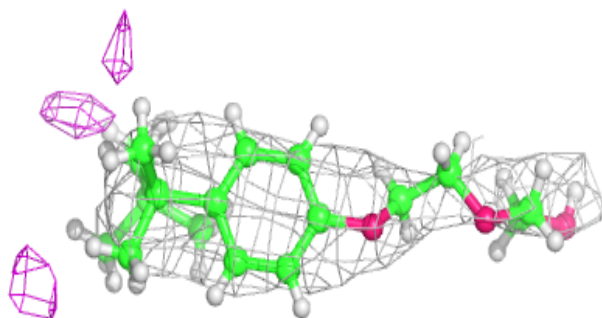
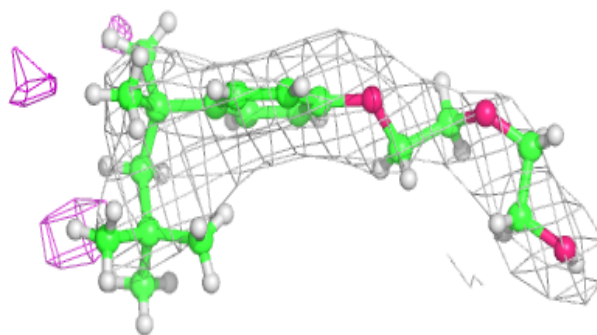
In the following table, the Atoms column lists the number of modelled atoms in the group and the number defined in the chemical component dictionary. The B-factors column lists the minimum, median, 95<sup>th</sup> percentile and maximum values of B factors of atoms in the group. The column labelled 'Q< 0.9' lists the number of atoms with occupancy less than 0.9.

Mol	Type	Chain	Res	Atoms	RSCC	RSR	B-factors(Å <sup>2</sup> )	Q<0.9
5	CL	C	202	1/1	0.78	0.16	69,69,69,69	0
8	SCN	C	205	3/3	0.80	0.31	63,63,70,95	0
5	CL	C	204	1/1	0.81	0.13	66,66,66,66	0
4	NAG	E	201	14/15	0.83	0.28	60,72,85,88	0
8	SCN	D	407	3/3	0.84	0.14	62,62,66,69	0
4	NAG	B	401	14/15	0.84	0.17	40,50,76,76	0
8	SCN	D	406	3/3	0.86	0.30	52,52,56,58	0
6	TON	C	206	21/21	0.87	0.54	54,73,93,110	0
4	NAG	A	203	14/15	0.88	0.23	59,73,87,94	0
5	CL	D	402	1/1	0.90	0.14	51,51,51,51	0
4	NAG	D	401	14/15	0.90	0.15	47,61,76,81	0
5	CL	D	404	1/1	0.90	0.50	64,64,64,64	0
8	SCN	F	404	3/3	0.90	0.31	62,62,63,72	0
6	TON	E	203	21/21	0.90	0.28	44,58,82,92	0
5	CL	C	203	1/1	0.92	0.10	38,38,38,38	0
5	CL	B	402	1/1	0.92	0.10	37,37,37,37	0
5	CL	B	403	1/1	0.92	0.07	50,50,50,50	0
5	CL	D	405	1/1	0.92	0.19	68,68,68,68	0
5	CL	D	403	1/1	0.92	0.08	61,61,61,61	0
5	CL	A	204	1/1	0.93	0.16	50,50,50,50	0
6	TON	A	205	21/21	0.93	0.20	38,51,90,96	0
8	SCN	F	403	3/3	0.93	0.27	41,41,48,56	0
4	NAG	C	201	14/15	0.94	0.17	42,56,80,80	0
7	WTF	D	408	30/30	0.95	0.21	33,44,57,60	0
7	WTF	F	405	30/30	0.95	0.22	31,44,56,62	0
5	CL	F	401	1/1	0.96	0.13	46,46,46,46	0
5	CL	E	202	1/1	0.96	0.17	49,49,49,49	0
7	WTF	B	404	30/30	0.96	0.21	24,37,52,62	0
8	SCN	F	402	3/3	0.97	0.20	47,47,52,52	0

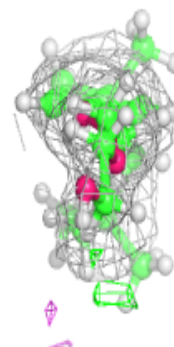
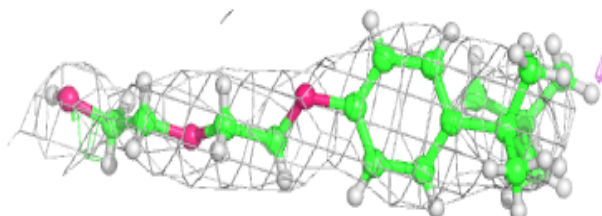
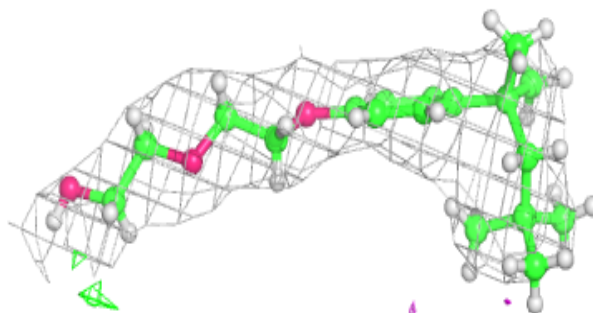
The following is a graphical depiction of the model fit to experimental electron density of all instances of the Ligand of Interest. In addition, ligands with molecular weight > 250 and outliers as shown on the geometry validation Tables will also be included. Each fit is shown from different orientation to approximate a three-dimensional view.

**Electron density around TON C 206:**

$2mF_o-DF_c$  (at 0.7 rmsd) in gray  
 $mF_o-DF_c$  (at 3 rmsd) in purple (negative)  
and green (positive)

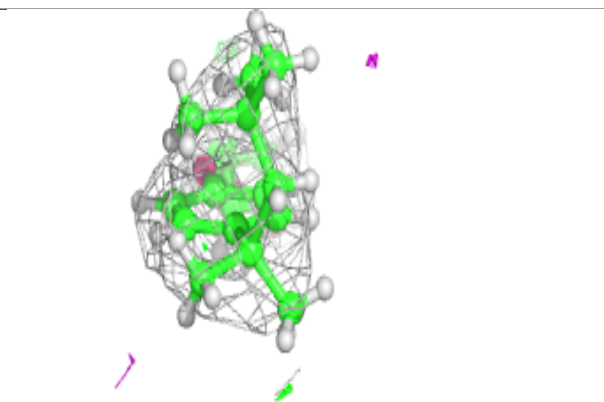
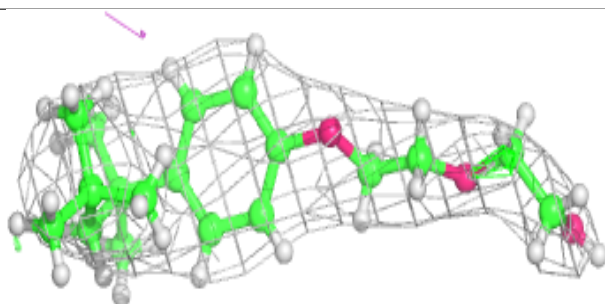
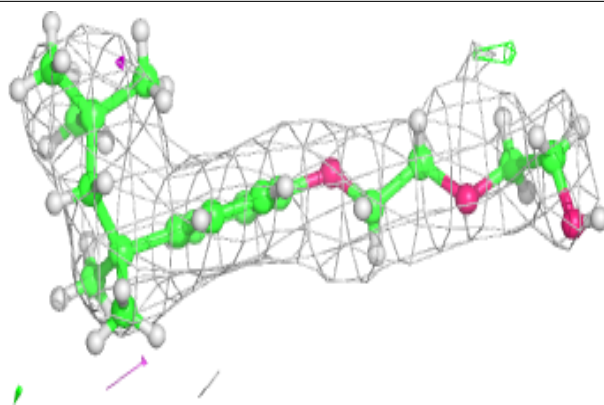
**Electron density around TON E 203:**

$2mF_o-DF_c$  (at 0.7 rmsd) in gray  
 $mF_o-DF_c$  (at 3 rmsd) in purple (negative)  
and green (positive)

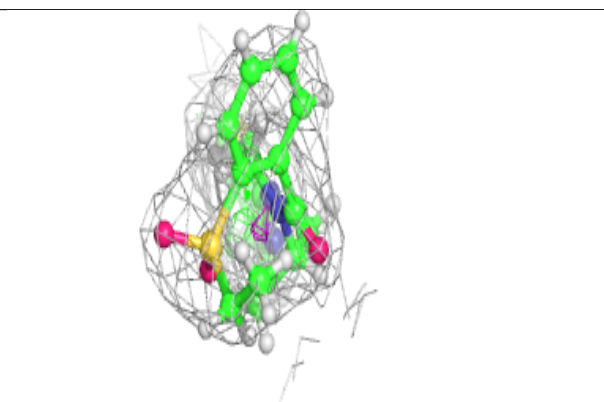
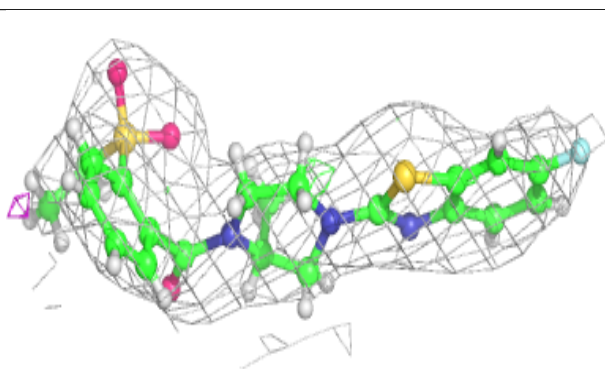
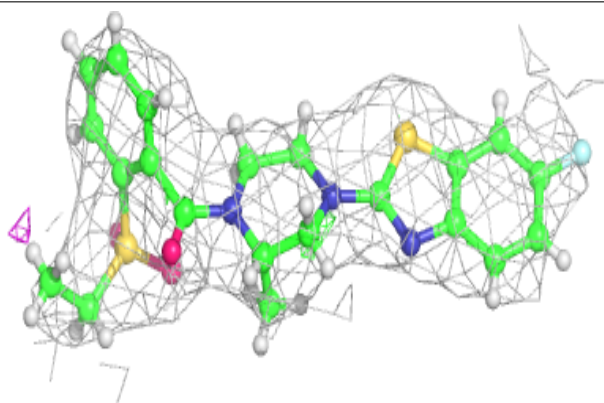


**Electron density around TON A 205:**

$2mF_o-DF_c$  (at 0.7 rmsd) in gray  
 $mF_o-DF_c$  (at 3 rmsd) in purple (negative)  
and green (positive)

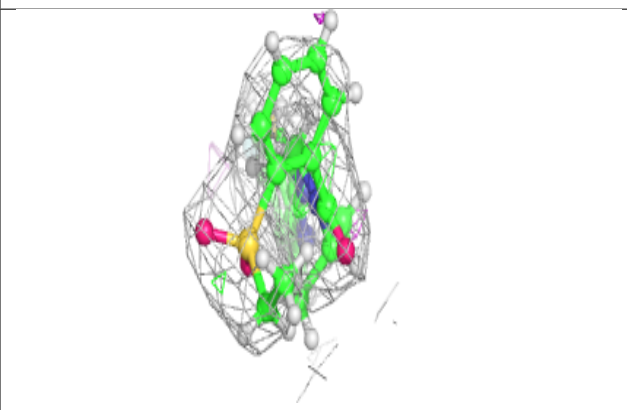
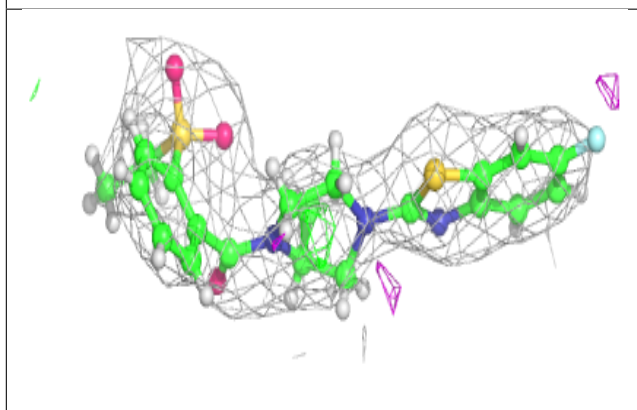
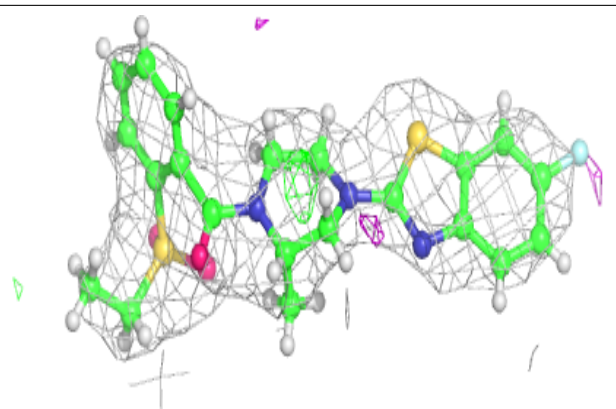
**Electron density around WTF D 408:**

$2mF_o-DF_c$  (at 0.7 rmsd) in gray  
 $mF_o-DF_c$  (at 3 rmsd) in purple (negative)  
and green (positive)

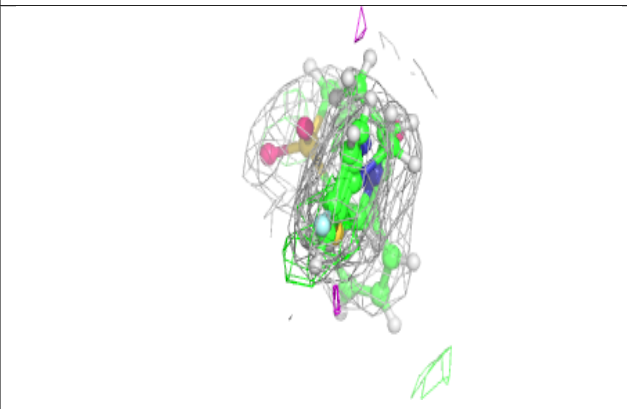
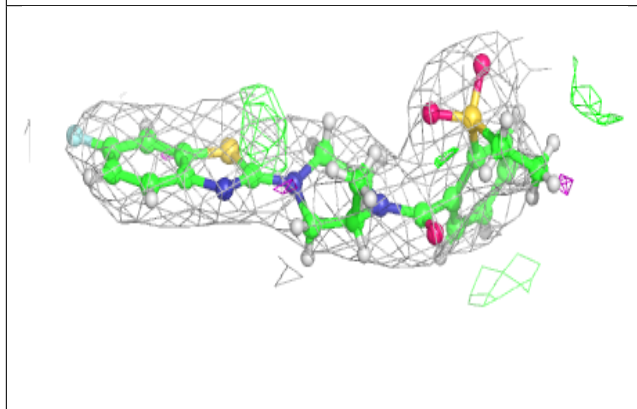
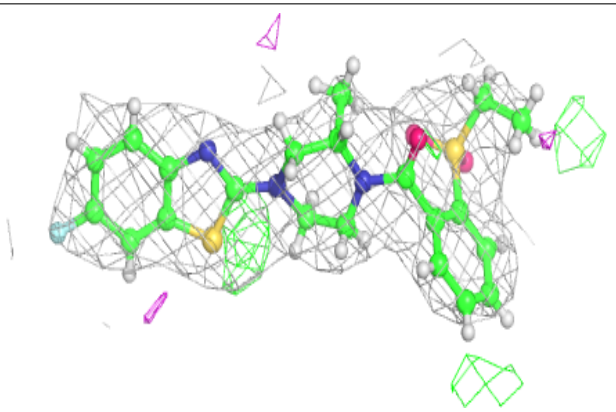


**Electron density around WTF F 405:**

$2mF_o-DF_c$  (at 0.7 rmsd) in gray  
 $mF_o-DF_c$  (at 3 rmsd) in purple (negative)  
and green (positive)

**Electron density around WTF B 404:**

$2mF_o-DF_c$  (at 0.7 rmsd) in gray  
 $mF_o-DF_c$  (at 3 rmsd) in purple (negative)  
and green (positive)



## 6.5 Other polymers [i](#)

There are no such residues in this entry.