



Full wwPDB X-ray Structure Validation Report ⓘ

May 21, 2020 – 03:09 am BST

PDB ID : 6DYT
Title : Citrobacter freundii tyrosine phenol-lyase F448A mutant complexed with L-alanine
Authors : Phillips, R.S.
Deposited on : 2018-07-02
Resolution : 2.05 Å(reported)

This is a Full wwPDB X-ray Structure Validation Report for a publicly released PDB entry.

We welcome your comments at validation@mail.wwpdb.org

A user guide is available at

<https://www.wwpdb.org/validation/2017/XrayValidationReportHelp>

with specific help available everywhere you see the ⓘ symbol.

The following versions of software and data (see [references ⓘ](#)) were used in the production of this report:

MolProbity : 4.02b-467
Mogul : 1.8.5 (274361), CSD as541be (2020)
Xtriage (Phenix) : 1.13
EDS : 2.11
buster-report : 1.1.7 (2018)
Percentile statistics : 20191225.v01 (using entries in the PDB archive December 25th 2019)
Refmac : 5.8.0158
CCP4 : 7.0.044 (Gargrove)
Ideal geometry (proteins) : Engh & Huber (2001)
Ideal geometry (DNA, RNA) : Parkinson et al. (1996)
Validation Pipeline (wwPDB-VP) : 2.11

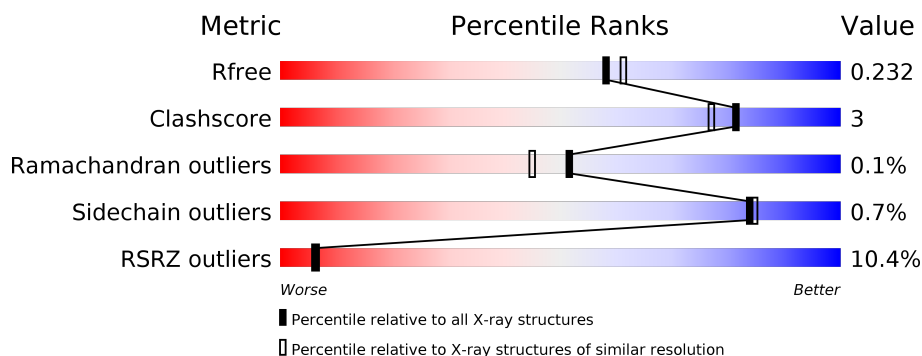
1 Overall quality at a glance

The following experimental techniques were used to determine the structure:

X-RAY DIFFRACTION

The reported resolution of this entry is 2.05 Å.

Percentile scores (ranging between 0-100) for global validation metrics of the entry are shown in the following graphic. The table shows the number of entries on which the scores are based.



Metric	Whole archive (#Entries)	Similar resolution (#Entries, resolution range(Å))
R_{free}	130704	1692 (2.04-2.04)
Clashscore	141614	1773 (2.04-2.04)
Ramachandran outliers	138981	1752 (2.04-2.04)
Sidechain outliers	138945	1752 (2.04-2.04)
RSRZ outliers	127900	1672 (2.04-2.04)

The table below summarises the geometric issues observed across the polymeric chains and their fit to the electron density. The red, orange, yellow and green segments on the lower bar indicate the fraction of residues that contain outliers for ≥ 3 , 2, 1 and 0 types of geometric quality criteria respectively. A grey segment represents the fraction of residues that are not modelled. The numeric value for each fraction is indicated below the corresponding segment, with a dot representing fractions $\leq 5\%$. The upper red bar (where present) indicates the fraction of residues that have poor fit to the electron density. The numeric value is given above the bar.

Mol	Chain	Length	Quality of chain
1	A	456	<div> <div>14%</div> <div> <div></div> <div>92%</div> <div>7%</div> </div> </div>
1	B	456	<div> <div>7%</div> <div> <div></div> <div>95%</div> <div>5%</div> </div> </div>

2 Entry composition

There are 6 unique types of molecules in this entry. The entry contains 7940 atoms, of which 0 are hydrogens and 0 are deuteriums.

In the tables below, the ZeroOcc column contains the number of atoms modelled with zero occupancy, the AltConf column contains the number of residues with at least one atom in alternate conformation and the Trace column contains the number of residues modelled with at most 2 atoms.

- Molecule 1 is a protein called Tyrosine phenol-lyase.

Mol	Chain	Residues	Atoms					ZeroOcc	AltConf	Trace
1	A	455	Total	C	N	O	S	0	2	0
			3608	2283	624	674	27			
1	B	455	Total	C	N	O	S	0	6	0
			3643	2302	631	683	27			

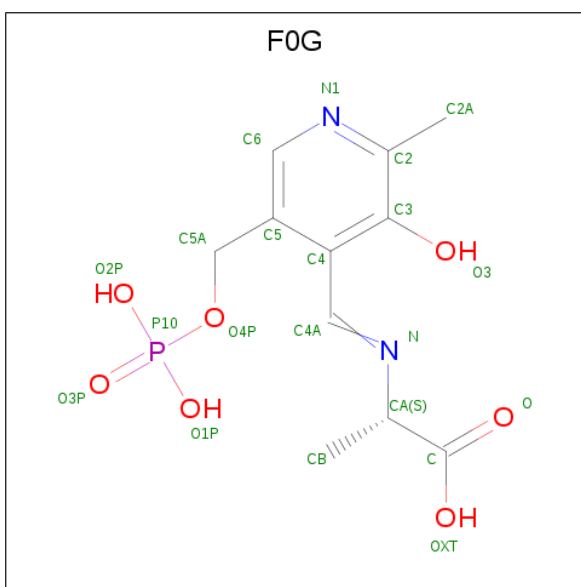
There are 4 discrepancies between the modelled and reference sequences:

Chain	Residue	Modelled	Actual	Comment	Reference
A	205	ALA	GLU	conflict	UNP P31013
A	448	ALA	PHE	engineered mutation	UNP P31013
B	205	ALA	GLU	conflict	UNP P31013
B	448	ALA	PHE	engineered mutation	UNP P31013

- Molecule 2 is POTASSIUM ION (three-letter code: K) (formula: K).

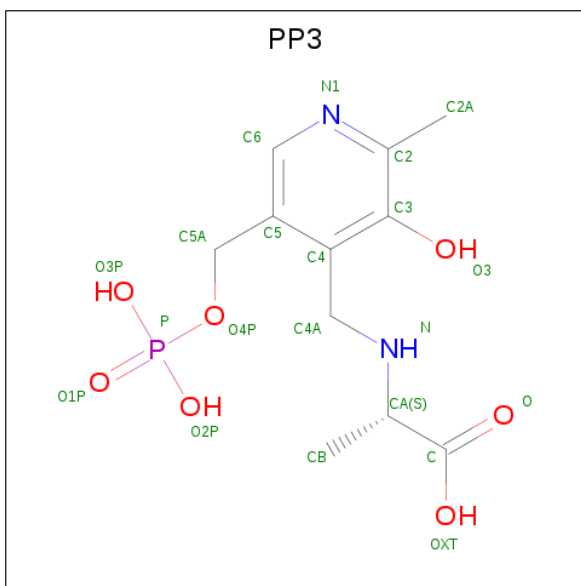
Mol	Chain	Residues	Atoms		ZeroOcc	AltConf
2	A	2	Total	K	0	0
			2	2		

- Molecule 3 is (E)-N-({3-hydroxy-2-methyl-5-[(phosphonoxy)methyl]pyridin-4-yl}methylidene)-L-alanine (three-letter code: F0G) (formula: C₁₁H₁₅N₂O₇P).



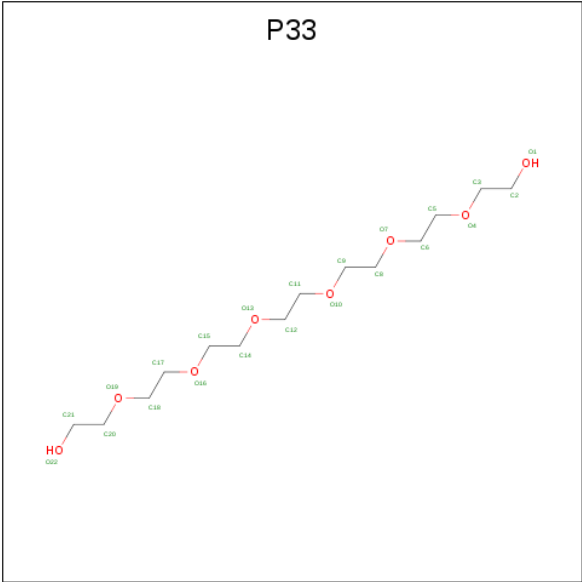
Mol	Chain	Residues	Atoms					ZeroOcc	AltConf
3	A	1	Total	C	N	O	P	0	0
			21	11	2	7	1		

- Molecule 4 is ALANYL-PYRIDOXAL-5'-PHOSPHATE (three-letter code: PP3) (formula: $C_{11}H_{17}N_2O_7P$).



Mol	Chain	Residues	Atoms					ZeroOcc	AltConf
4	B	1	Total	C	N	O	P	0	0
			21	11	2	7	1		

- Molecule 5 is 3,6,9,12,15,18-HEXAOSAICOSANE-1,20-DIOL (three-letter code: P33) (formula: $C_{14}H_{30}O_8$).



Mol	Chain	Residues	Atoms			ZeroOcc	AltConf
5	B	1	Total	C	O	0	0
			22	14	8		

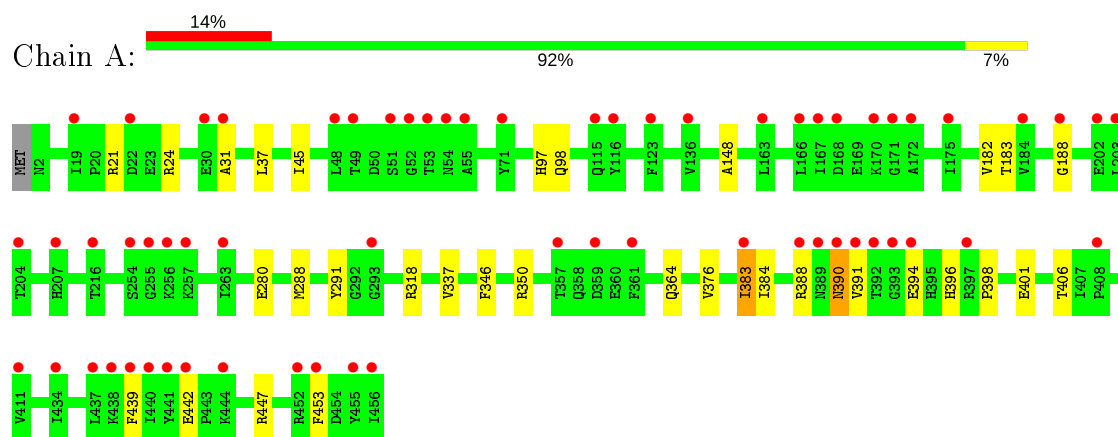
- Molecule 6 is water.

Mol	Chain	Residues	Atoms		ZeroOcc	AltConf
6	A	274	Total	O	0	0
			274	274		
6	B	349	Total	O	0	0
			349	349		

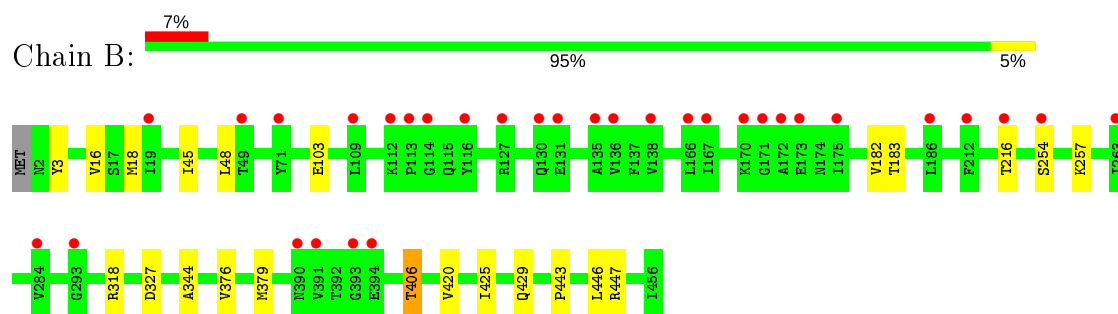
3 Residue-property plots [i](#)

These plots are drawn for all protein, RNA and DNA chains in the entry. The first graphic for a chain summarises the proportions of the various outlier classes displayed in the second graphic. The second graphic shows the sequence view annotated by issues in geometry and electron density. Residues are color-coded according to the number of geometric quality criteria for which they contain at least one outlier: green = 0, yellow = 1, orange = 2 and red = 3 or more. A red dot above a residue indicates a poor fit to the electron density ($RSRZ > 2$). Stretches of 2 or more consecutive residues without any outlier are shown as a green connector. Residues present in the sample, but not in the model, are shown in grey.

- Molecule 1: Tyrosine phenol-lyase



- Molecule 1: Tyrosine phenol-lyase



4 Data and refinement statistics

Property	Value	Source
Space group	P 2 ₁ 2 ₁ 2 ₁	Depositor
Cell constants a, b, c, α , β , γ	59.64Å 133.27Å 145.07Å 90.00° 90.00° 90.00°	Depositor
Resolution (Å)	37.89 – 2.05 37.89 – 2.05	Depositor EDS
% Data completeness (in resolution range)	99.3 (37.89-2.05) 99.3 (37.89-2.05)	Depositor EDS
R_{merge}	0.10	Depositor
R_{sym}	(Not available)	Depositor
$\langle I/\sigma(I) \rangle$ ¹	1.02 (at 2.05Å)	Xtriage
Refinement program	PHENIX 1.13 _2998	Depositor
R, R_{free}	0.186 , 0.232 0.186 , 0.232	Depositor DCC
R_{free} test set	1997 reflections (2.74%)	wwPDB-VP
Wilson B-factor (Å ²)	56.9	Xtriage
Anisotropy	0.224	Xtriage
Bulk solvent k_{sol} (e/Å ³), B_{sol} (Å ²)	0.34 , 89.4	EDS
L-test for twinning ²	$\langle L \rangle = 0.50$, $\langle L^2 \rangle = 0.33$	Xtriage
Estimated twinning fraction	No twinning to report.	Xtriage
F_o, F_c correlation	0.97	EDS
Total number of atoms	7940	wwPDB-VP
Average B, all atoms (Å ²)	80.0	wwPDB-VP

Xtriage's analysis on translational NCS is as follows: *The largest off-origin peak in the Patterson function is 3.65% of the height of the origin peak. No significant pseudotranslation is detected.*

¹Intensities estimated from amplitudes.

²Theoretical values of $\langle |L| \rangle$, $\langle L^2 \rangle$ for acentric reflections are 0.5, 0.333 respectively for untwinned datasets, and 0.375, 0.2 for perfectly twinned datasets.

5 Model quality

5.1 Standard geometry

Bond lengths and bond angles in the following residue types are not validated in this section: PP3, P33, K, F0G

The Z score for a bond length (or angle) is the number of standard deviations the observed value is removed from the expected value. A bond length (or angle) with $|Z| > 5$ is considered an outlier worth inspection. RMSZ is the root-mean-square of all Z scores of the bond lengths (or angles).

Mol	Chain	Bond lengths		Bond angles	
		RMSZ	$\# Z > 5$	RMSZ	$\# Z > 5$
1	A	0.25	0/3685	0.44	0/4963
1	B	0.25	0/3718	0.43	0/5008
All	All	0.25	0/7403	0.44	0/9971

There are no bond length outliers.

There are no bond angle outliers.

There are no chirality outliers.

There are no planarity outliers.

5.2 Too-close contacts

In the following table, the Non-H and H(model) columns list the number of non-hydrogen atoms and hydrogen atoms in the chain respectively. The H(added) column lists the number of hydrogen atoms added and optimized by MolProbity. The Clashes column lists the number of clashes within the asymmetric unit, whereas Symm-Clashes lists symmetry related clashes.

Mol	Chain	Non-H	H(model)	H(added)	Clashes	Symm-Clashes
1	A	3608	0	3563	23	0
1	B	3643	0	3584	15	0
2	A	2	0	0	0	0
3	A	21	0	0	0	0
4	B	21	0	13	3	0
5	B	22	0	30	0	0
6	A	274	0	0	0	1
6	B	349	0	0	0	1
All	All	7940	0	7190	37	1

The all-atom clashscore is defined as the number of clashes found per 1000 atoms (including hydrogen atoms). The all-atom clashscore for this structure is 3.

All (37) close contacts within the same asymmetric unit are listed below, sorted by their clash magnitude.

Atom-1	Atom-2	Interatomic distance (Å)	Clash overlap (Å)
1:B:257:LYS:HZ1	4:B:1501:PP3:H4A2	1.45	0.81
1:B:257:LYS:NZ	4:B:1501:PP3:H4A2	2.12	0.64
1:A:391:VAL:HG11	1:A:394:GLU:HG3	1.82	0.61
1:A:383:ILE:HG22	1:A:396:HIS:O	2.06	0.55
1:B:45:ILE:HB	1:B:376:VAL:HG22	1.88	0.55
1:B:376:VAL:HG21	1:B:420:VAL:HG22	1.92	0.52
1:B:443:PRO:HG2	1:B:447:ARG:HA	1.93	0.51
1:A:350:ARG:NH2	1:A:398:PRO:O	2.43	0.50
1:A:31:ALA:HB1	1:A:37:LEU:HB2	1.94	0.49
1:B:103:GLU:OE2	4:B:1501:PP3:H6	2.11	0.49
1:B:48:LEU:HD12	1:B:379:MET:HB2	1.95	0.49
1:A:388:ARG:NH1	1:A:442:GLU:OE2	2.46	0.49
1:A:280:GLU:HA	1:B:446:LEU:HD11	1.95	0.48
1:A:148:ALA:HB1	1:A:337:VAL:HG22	1.96	0.48
1:B:216[B]:THR:HG23	1:B:254:SER:HB3	1.94	0.47
1:A:188:GLY:HA2	1:A:346:PHE:CE1	2.50	0.47
1:B:344:ALA:HB2	1:B:406:THR:HG23	1.98	0.46
1:B:182:VAL:HA	1:B:183:THR:HA	1.77	0.46
1:A:288[A]:MET:HB2	1:A:291:TYR:CD2	2.51	0.45
1:A:390:ASN:OD1	1:A:391:VAL:N	2.50	0.45
1:B:16:VAL:HG23	1:B:18:MET:HG2	1.99	0.45
1:B:3:TYR:OH	1:B:327:ASP:OD2	2.31	0.43
1:A:439:PHE:CZ	1:A:447:ARG:HD2	2.54	0.43
1:B:425:ILE:O	1:B:429:GLN:HG3	2.20	0.42
1:A:97:HIS:CD2	1:A:98:GLN:HG2	2.54	0.42
1:A:45:ILE:HB	1:A:376:VAL:HG22	2.01	0.42
1:A:364:GLN:HB2	1:A:384:ILE:HD12	2.02	0.42
1:A:21:ARG:HA	1:A:24:ARG:HE	1.84	0.41
1:A:350:ARG:HG3	1:A:401:GLU:HB3	2.02	0.41
1:A:384:ILE:HD13	1:A:453:PHE:CZ	2.55	0.41
1:B:216[A]:THR:HG22	1:B:254:SER:HB3	2.03	0.41
1:A:383:ILE:HG13	1:A:401:GLU:OE2	2.21	0.41
1:A:288[B]:MET:HB2	1:A:291:TYR:CD2	2.55	0.41
1:A:182:VAL:HA	1:A:183:THR:HA	1.77	0.40
1:A:391:VAL:HB	1:A:394:GLU:HB2	2.02	0.40
1:A:383:ILE:HG13	1:A:383:ILE:H	1.55	0.40
1:A:390:ASN:OD1	1:A:391:VAL:HG23	2.21	0.40

All (1) symmetry-related close contacts are listed below. The label for Atom-2 includes the symmetry operator and encoded unit-cell translations to be applied.

Atom-1	Atom-2	Interatomic distance (Å)	Clash overlap (Å)
6:A:777:HOH:O	6:B:1825:HOH:O[2_545]	2.16	0.04

5.3 Torsion angles [i](#)

5.3.1 Protein backbone [i](#)

In the following table, the Percentiles column shows the percent Ramachandran outliers of the chain as a percentile score with respect to all X-ray entries followed by that with respect to entries of similar resolution.

The Analysed column shows the number of residues for which the backbone conformation was analysed, and the total number of residues.

Mol	Chain	Analysed	Favoured	Allowed	Outliers	Percentiles	
1	A	455/456 (100%)	445 (98%)	9 (2%)	1 (0%)	47	39
1	B	459/456 (101%)	452 (98%)	7 (2%)	0	100	100
All	All	914/912 (100%)	897 (98%)	16 (2%)	1 (0%)	51	45

All (1) Ramachandran outliers are listed below:

Mol	Chain	Res	Type
1	A	390	ASN

5.3.2 Protein sidechains [i](#)

In the following table, the Percentiles column shows the percent sidechain outliers of the chain as a percentile score with respect to all X-ray entries followed by that with respect to entries of similar resolution.

The Analysed column shows the number of residues for which the sidechain conformation was analysed, and the total number of residues.

Mol	Chain	Analysed	Rotameric	Outliers	Percentiles	
1	A	378/377 (100%)	375 (99%)	3 (1%)	81	82
1	B	382/377 (101%)	380 (100%)	2 (0%)	88	89
All	All	760/754 (101%)	755 (99%)	5 (1%)	84	84

All (5) residues with a non-rotameric sidechain are listed below:

Mol	Chain	Res	Type
1	A	318	ARG
1	A	383	ILE
1	A	406	THR
1	B	318	ARG
1	B	406	THR

Some sidechains can be flipped to improve hydrogen bonding and reduce clashes. There are no such sidechains identified.

5.3.3 RNA ⓘ

There are no RNA molecules in this entry.

5.4 Non-standard residues in protein, DNA, RNA chains ⓘ

There are no non-standard protein/DNA/RNA residues in this entry.

5.5 Carbohydrates ⓘ

There are no carbohydrates in this entry.

5.6 Ligand geometry ⓘ

Of 5 ligands modelled in this entry, 2 are monoatomic - leaving 3 for Mogul analysis.

In the following table, the Counts columns list the number of bonds (or angles) for which Mogul statistics could be retrieved, the number of bonds (or angles) that are observed in the model and the number of bonds (or angles) that are defined in the Chemical Component Dictionary. The Link column lists molecule types, if any, to which the group is linked. The Z score for a bond length (or angle) is the number of standard deviations the observed value is removed from the expected value. A bond length (or angle) with $|Z| > 2$ is considered an outlier worth inspection. RMSZ is the root-mean-square of all Z scores of the bond lengths (or angles).

Mol	Type	Chain	Res	Link	Bond lengths			Bond angles		
					Counts	RMSZ	$\# Z > 2$	Counts	RMSZ	$\# Z > 2$
4	PP3	B	1501	-	18,21,21	3.85	10 (55%)	23,30,30	2.24	10 (43%)
3	F0G	A	503	-	18,21,21	4.07	10 (55%)	24,30,30	2.06	7 (29%)
5	P33	B	1502	-	21,21,21	0.54	0	20,20,20	0.20	0

In the following table, the Chirals column lists the number of chiral outliers, the number of chiral centers analysed, the number of these observed in the model and the number defined in the

Chemical Component Dictionary. Similar counts are reported in the Torsion and Rings columns. '-' means no outliers of that kind were identified.

Mol	Type	Chain	Res	Link	Chirals	Torsions	Rings
4	PP3	B	1501	-	-	5/11/15/15	0/1/1/1
3	F0G	A	503	-	-	4/11/15/15	0/1/1/1
5	P33	B	1502	-	-	9/19/19/19	-

All (20) bond length outliers are listed below:

Mol	Chain	Res	Type	Atoms	Z	Observed(Å)	Ideal(Å)
4	B	1501	PP3	P-O4P	11.19	1.96	1.60
3	A	503	F0G	CA-N	-10.60	1.28	1.47
3	A	503	F0G	C4A-N	7.21	1.40	1.27
4	B	1501	PP3	C3-C2	5.66	1.46	1.40
3	A	503	F0G	C4-C4A	-5.36	1.36	1.46
3	A	503	F0G	P10-O4P	5.33	1.77	1.60
3	A	503	F0G	C4-C3	4.39	1.47	1.40
4	B	1501	PP3	C4A-N	-4.26	1.34	1.46
3	A	503	F0G	C3-C2	-4.17	1.36	1.40
4	B	1501	PP3	O3-C3	-3.94	1.27	1.37
4	B	1501	PP3	O4P-C5A	-3.83	1.30	1.45
4	B	1501	PP3	C3-C4	3.71	1.45	1.40
4	B	1501	PP3	C4A-C4	-3.59	1.47	1.51
4	B	1501	PP3	C5A-C5	3.47	1.60	1.50
3	A	503	F0G	CB-CA	-3.43	1.45	1.52
3	A	503	F0G	C2-N1	2.96	1.39	1.33
4	B	1501	PP3	C6-C5	2.64	1.43	1.37
3	A	503	F0G	O4P-C5A	-2.48	1.35	1.45
4	B	1501	PP3	C2-N1	2.30	1.38	1.33
3	A	503	F0G	C6-N1	2.28	1.39	1.34

All (17) bond angle outliers are listed below:

Mol	Chain	Res	Type	Atoms	Z	Observed(°)	Ideal(°)
3	A	503	F0G	CB-CA-N	5.41	118.86	108.54
4	B	1501	PP3	C4-C4A-N	4.35	123.77	111.78
4	B	1501	PP3	C3-C4-C5	3.68	122.25	118.72
3	A	503	F0G	C3-C4-C5	-3.65	115.46	118.26
4	B	1501	PP3	O2P-P-O4P	-3.57	97.23	106.73
4	B	1501	PP3	C6-N1-C2	3.34	125.35	119.17
4	B	1501	PP3	O3P-P-O4P	-3.31	97.92	106.73
3	A	503	F0G	C3-C4-C4A	3.00	126.00	120.41
4	B	1501	PP3	C5-C6-N1	-2.95	118.90	123.82

Continued on next page...

Continued from previous page...

Mol	Chain	Res	Type	Atoms	Z	Observed(°)	Ideal(°)
3	A	503	F0G	O2P-P10-O4P	-2.58	99.87	106.73
3	A	503	F0G	O2P-P10-O1P	2.48	117.13	107.64
3	A	503	F0G	O1P-P10-O4P	-2.45	100.20	106.73
4	B	1501	PP3	O3P-P-O2P	2.40	116.83	107.64
3	A	503	F0G	CB-CA-C	2.28	115.11	111.56
4	B	1501	PP3	C4-C3-C2	-2.24	116.62	120.06
4	B	1501	PP3	C2A-C2-N1	2.17	121.91	117.67
4	B	1501	PP3	C4A-C4-C3	-2.02	117.88	120.04

There are no chirality outliers.

All (18) torsion outliers are listed below:

Mol	Chain	Res	Type	Atoms
3	A	503	F0G	C-CA-N-C4A
4	B	1501	PP3	C5-C4-C4A-N
5	B	1502	P33	O4-C5-C6-O7
5	B	1502	P33	O13-C14-C15-O16
5	B	1502	P33	O7-C8-C9-O10
3	A	503	F0G	CB-CA-N-C4A
5	B	1502	P33	C17-C18-O19-C20
5	B	1502	P33	C21-C20-O19-C18
5	B	1502	P33	C11-C12-O13-C14
4	B	1501	PP3	C3-C4-C4A-N
3	A	503	F0G	C4-C5-C5A-O4P
4	B	1501	PP3	C-CA-N-C4A
5	B	1502	P33	C6-C5-O4-C3
3	A	503	F0G	C6-C5-C5A-O4P
5	B	1502	P33	C12-C11-O10-C9
4	B	1501	PP3	CB-CA-N-C4A
5	B	1502	P33	O16-C17-C18-O19
4	B	1501	PP3	C4-C5-C5A-O4P

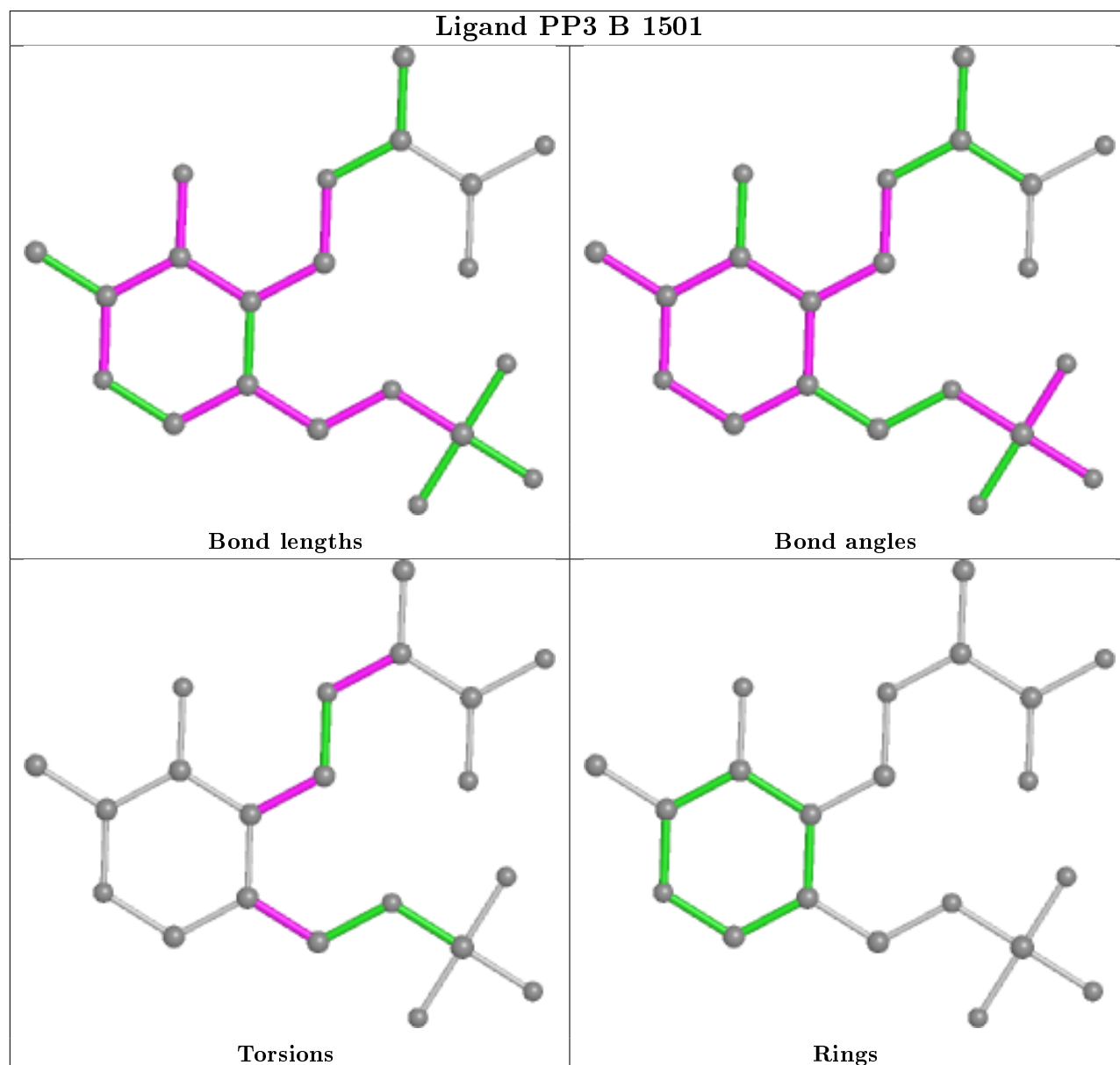
There are no ring outliers.

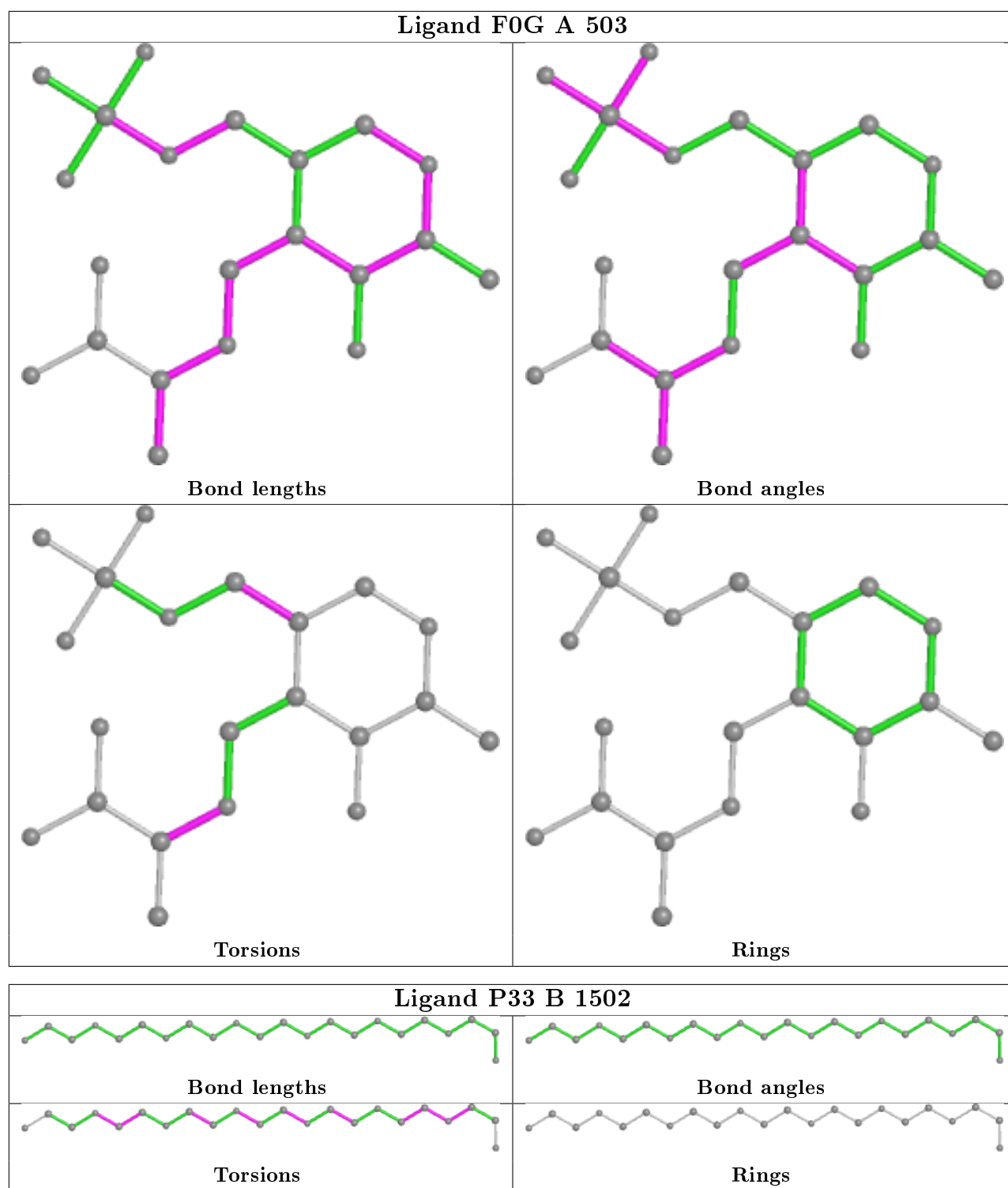
1 monomer is involved in 3 short contacts:

Mol	Chain	Res	Type	Clashes	Symm-Clashes
4	B	1501	PP3	3	0

The following is a two-dimensional graphical depiction of Mogul quality analysis of bond lengths, bond angles, torsion angles, and ring geometry for all instances of the Ligand of Interest. In addition, ligands with molecular weight > 250 and outliers as shown on the validation Tables will

also be included. For torsion angles, if less than 5% of the Mogul distribution of torsion angles is within 10 degrees of the torsion angle in question, then that torsion angle is considered an outlier. Any bond that is central to one or more torsion angles identified as an outlier by Mogul will be highlighted in the graph. For rings, the root-mean-square deviation (RMSD) between the ring in question and similar rings identified by Mogul is calculated over all ring torsion angles. If the average RMSD is greater than 60 degrees and the minimal RMSD between the ring in question and any Mogul-identified rings is also greater than 60 degrees, then that ring is considered an outlier. The outliers are highlighted in purple. The color gray indicates Mogul did not find sufficient equivalents in the CSD to analyse the geometry.





5.7 Other polymers [i](#)

There are no such residues in this entry.

5.8 Polymer linkage issues ⓘ

There are no chain breaks in this entry.

6 Fit of model and data ⓘ

6.1 Protein, DNA and RNA chains ⓘ

In the following table, the column labelled ‘#RSRZ> 2’ contains the number (and percentage) of RSRZ outliers, followed by percent RSRZ outliers for the chain as percentile scores relative to all X-ray entries and entries of similar resolution. The OWAB column contains the minimum, median, 95th percentile and maximum values of the occupancy-weighted average B-factor per residue. The column labelled ‘Q< 0.9’ lists the number of (and percentage) of residues with an average occupancy less than 0.9.

Mol	Chain	Analysed	<RSRZ>	#RSRZ>2	OWAB(Å ²)	Q<0.9
1	A	455/456 (99%)	0.74	63 (13%) 2 2	42, 74, 143, 215	0
1	B	455/456 (99%)	0.44	32 (7%) 16 18	44, 71, 116, 161	0
All	All	910/912 (99%)	0.59	95 (10%) 6 6	42, 72, 134, 215	0

All (95) RSRZ outliers are listed below:

Mol	Chain	Res	Type	RSRZ
1	A	437	LEU	9.1
1	A	456	ILE	8.3
1	B	391	VAL	7.2
1	A	392	THR	7.0
1	A	391	VAL	5.7
1	B	390	ASN	5.6
1	B	166	LEU	5.5
1	A	439	PHE	5.4
1	A	361	PHE	5.3
1	A	393	GLY	5.1
1	A	444	LYS	5.0
1	B	171	GLY	4.8
1	A	440	ILE	4.6
1	B	170	LYS	4.4
1	A	167	ILE	4.4
1	B	172	ALA	4.4
1	A	438	LYS	4.4
1	B	136	VAL	4.3
1	B	71	TYR	4.3
1	B	138	VAL	4.1
1	A	394	GLU	3.9
1	B	167	ILE	3.9
1	A	383	ILE	3.9
1	A	203	LEU	3.7

Continued on next page...

Continued from previous page...

Mol	Chain	Res	Type	RSRZ
1	B	116	TYR	3.7
1	A	19	ILE	3.6
1	A	171	GLY	3.5
1	A	49	THR	3.5
1	B	394	GLU	3.5
1	A	453	PHE	3.4
1	A	455	TYR	3.4
1	A	388	ARG	3.4
1	A	166	LEU	3.3
1	A	389	ASN	3.3
1	A	172	ALA	3.3
1	A	434	ILE	3.2
1	A	136	VAL	3.2
1	A	390	ASN	3.2
1	A	51	SER	3.2
1	B	130	GLN	3.0
1	B	114	GLY	3.0
1	A	53	THR	3.0
1	A	255	GLY	3.0
1	A	452	ARG	2.9
1	A	207	HIS	2.9
1	B	263	ILE	2.9
1	A	184	VAL	2.9
1	A	163	LEU	2.9
1	A	256	LYS	2.9
1	A	170	LYS	2.8
1	A	71	TYR	2.8
1	A	48	LEU	2.8
1	A	254	SER	2.8
1	B	131	GLU	2.8
1	A	168	ASP	2.7
1	B	127	ARG	2.7
1	B	254	SER	2.7
1	B	175	ILE	2.7
1	B	19	ILE	2.7
1	A	123	PHE	2.7
1	A	441	TYR	2.6
1	B	173	GLU	2.6
1	A	52	GLY	2.6
1	A	22	ASP	2.6
1	B	186	LEU	2.6
1	B	293	GLY	2.5

Continued on next page...

Continued from previous page...

Mol	Chain	Res	Type	RSRZ
1	A	257	LYS	2.5
1	A	115	GLN	2.5
1	B	284	VAL	2.5
1	A	116	TYR	2.5
1	A	357	THR	2.4
1	A	408	PRO	2.4
1	A	31	ALA	2.4
1	A	411	VAL	2.4
1	A	293	GLY	2.3
1	A	30	GLU	2.3
1	B	135	ALA	2.3
1	A	263	ILE	2.3
1	A	204	THR	2.2
1	B	113	PRO	2.2
1	A	202	GLU	2.2
1	B	49	THR	2.2
1	A	397	ARG	2.2
1	A	175	ILE	2.1
1	A	54	ASN	2.1
1	A	188	GLY	2.1
1	A	442	GLU	2.1
1	A	216	THR	2.1
1	A	359	ASP	2.0
1	B	216[A]	THR	2.0
1	B	112	LYS	2.0
1	B	109	LEU	2.0
1	B	212	PHE	2.0
1	B	393	GLY	2.0
1	A	55	ALA	2.0

6.2 Non-standard residues in protein, DNA, RNA chains ⓘ

There are no non-standard protein/DNA/RNA residues in this entry.

6.3 Carbohydrates ⓘ

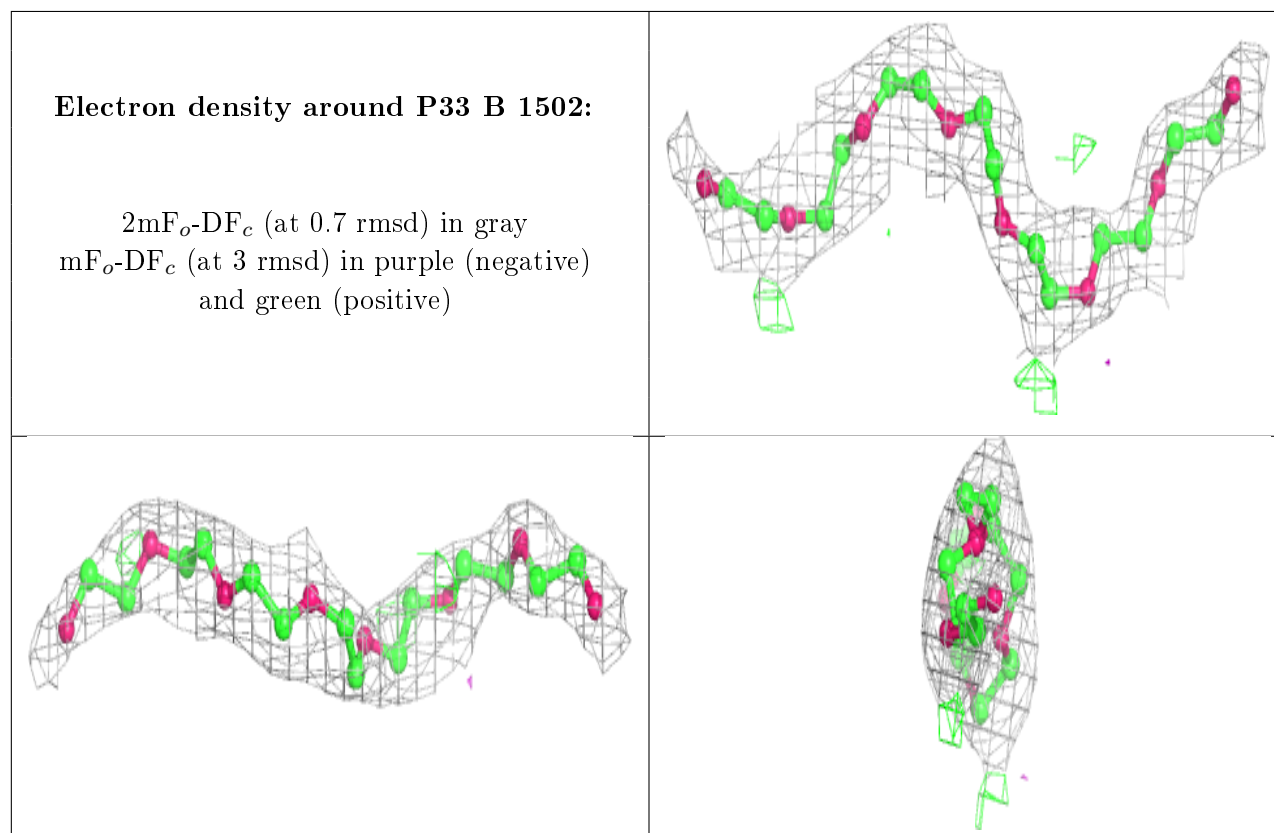
There are no carbohydrates in this entry.

6.4 Ligands ⓘ

In the following table, the Atoms column lists the number of modelled atoms in the group and the number defined in the chemical component dictionary. The B-factors column lists the minimum, median, 95th percentile and maximum values of B factors of atoms in the group. The column labelled 'Q< 0.9' lists the number of atoms with occupancy less than 0.9.

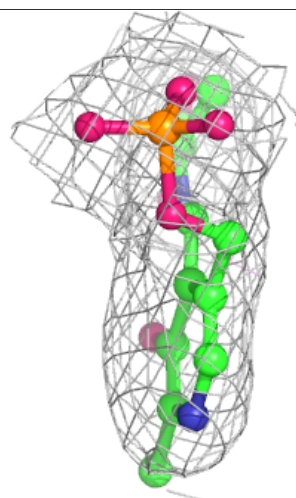
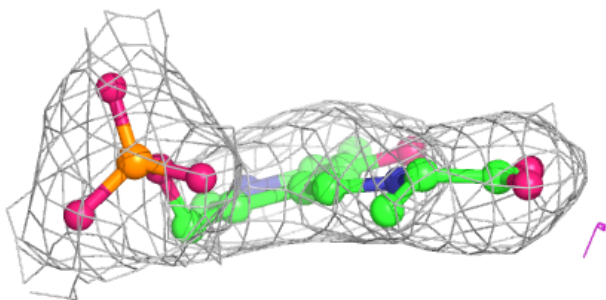
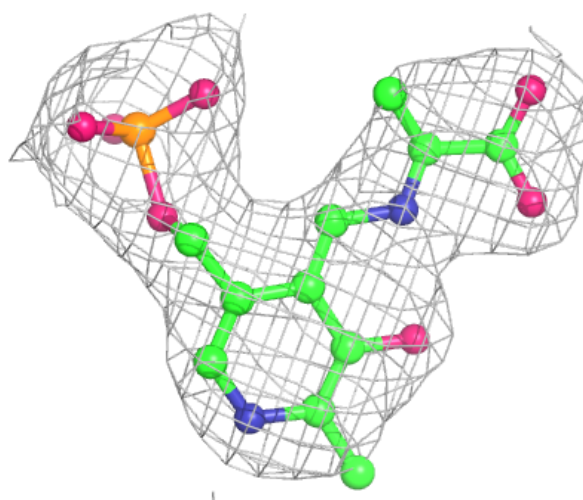
Mol	Type	Chain	Res	Atoms	RSCC	RSR	B-factors(Å ²)	Q<0.9
5	P33	B	1502	22/22	0.83	0.16	85,94,106,114	0
2	K	A	502	1/1	0.95	0.08	61,61,61,61	0
3	F0G	A	503	21/21	0.98	0.26	55,62,72,75	0
4	PP3	B	1501	21/21	0.98	0.24	58,78,98,103	0
2	K	A	501	1/1	0.99	0.08	58,58,58,58	0

The following is a graphical depiction of the model fit to experimental electron density of all instances of the Ligand of Interest. In addition, ligands with molecular weight > 250 and outliers as shown on the geometry validation Tables will also be included. Each fit is shown from different orientation to approximate a three-dimensional view.



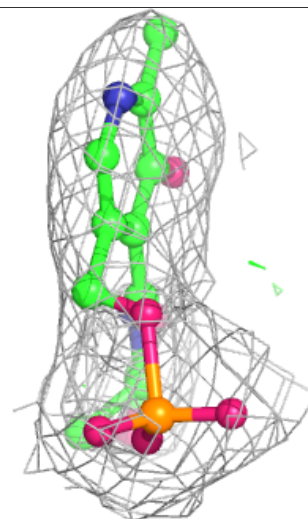
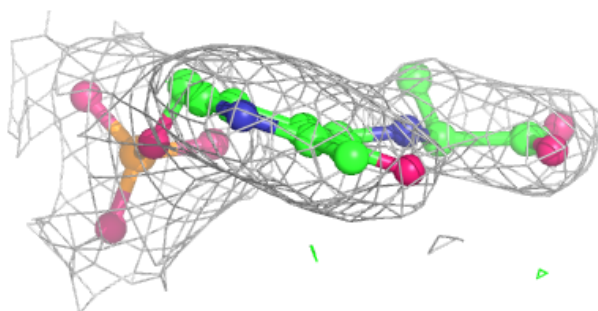
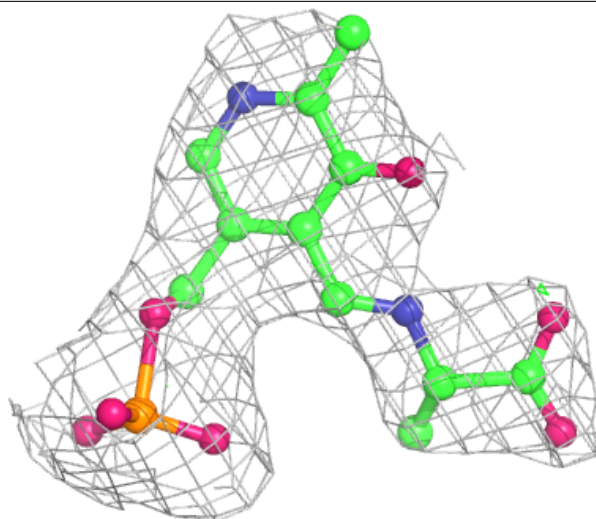
Electron density around F0G A 503:

$2mF_o-DF_c$ (at 0.7 rmsd) in gray
 mF_o-DF_c (at 3 rmsd) in purple (negative)
and green (positive)



Electron density around PP3 B 1501:

$2mF_o-DF_c$ (at 0.7 rmsd) in gray
 mF_o-DF_c (at 3 rmsd) in purple (negative)
and green (positive)



6.5 Other polymers [i](#)

There are no such residues in this entry.