



# Full wwPDB X-ray Structure Validation Report ⓘ

May 13, 2020 – 11:43 am BST

PDB ID : 6E3T  
Title : Crystal Structure of the Heterodimeric HIF-2 Complex with Antagonist T1001  
Authors : Wu, D.; Su, X.; Lu, J.; Li, S.; Hood, B.; Vasile, S.; Potluri, N.; Diao, X.; Kim, Y.; Khorasanizadeh, S.; Rastinejad, F.  
Deposited on : 2018-07-15  
Resolution : 3.00 Å(reported)

This is a Full wwPDB X-ray Structure Validation Report for a publicly released PDB entry.

We welcome your comments at [validation@mail.wwpdb.org](mailto:validation@mail.wwpdb.org)

A user guide is available at

<https://www.wwpdb.org/validation/2017/XrayValidationReportHelp>

with specific help available everywhere you see the ⓘ symbol.

---

The following versions of software and data (see [references ⓘ](#)) were used in the production of this report:

MolProbity : 4.02b-467  
Mogul : 1.8.5 (274361), CSD as541be (2020)  
Xtriage (Phenix) : 1.13  
EDS : 2.11  
buster-report : 1.1.7 (2018)  
Percentile statistics : 20191225.v01 (using entries in the PDB archive December 25th 2019)  
Refmac : 5.8.0158  
CCP4 : 7.0.044 (Gargrove)  
Ideal geometry (proteins) : Engh & Huber (2001)  
Ideal geometry (DNA, RNA) : Parkinson et al. (1996)  
Validation Pipeline (wwPDB-VP) : 2.11

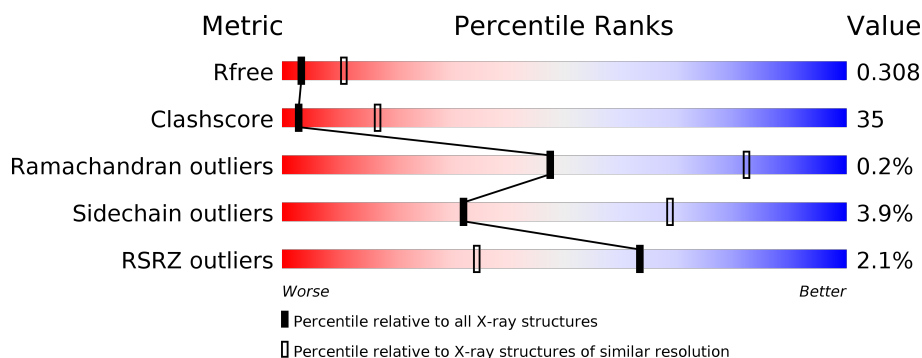
# 1 Overall quality at a glance

The following experimental techniques were used to determine the structure:

*X-RAY DIFFRACTION*

The reported resolution of this entry is 3.00 Å.

Percentile scores (ranging between 0-100) for global validation metrics of the entry are shown in the following graphic. The table shows the number of entries on which the scores are based.



Metric	Whole archive (#Entries)	Similar resolution (#Entries, resolution range(Å))
$R_{free}$	130704	2092 (3.00-3.00)
Clashscore	141614	2416 (3.00-3.00)
Ramachandran outliers	138981	2333 (3.00-3.00)
Sidechain outliers	138945	2336 (3.00-3.00)
RSRZ outliers	127900	1990 (3.00-3.00)

The table below summarises the geometric issues observed across the polymeric chains and their fit to the electron density. The red, orange, yellow and green segments on the lower bar indicate the fraction of residues that contain outliers for  $\geq 3$ , 2, 1 and 0 types of geometric quality criteria respectively. A grey segment represents the fraction of residues that are not modelled. The numeric value for each fraction is indicated below the corresponding segment, with a dot representing fractions  $\leq 5\%$ . The upper red bar (where present) indicates the fraction of residues that have poor fit to the electron density. The numeric value is given above the bar.

Mol	Chain	Length	Quality of chain
1	A	384	<div> <div>2%</div> <div> <div></div> <div>31%</div> <div>32%</div> <div>•</div> <div>36%</div> </div> </div>
2	B	368	<div> <div>%</div> <div> <div></div> <div>38%</div> <div>36%</div> <div>•</div> <div>24%</div> </div> </div>

## 2 Entry composition

There are 3 unique types of molecules in this entry. The entry contains 4266 atoms, of which 0 are hydrogens and 0 are deuteriums.

In the tables below, the ZeroOcc column contains the number of atoms modelled with zero occupancy, the AltConf column contains the number of residues with at least one atom in alternate conformation and the Trace column contains the number of residues modelled with at most 2 atoms.

- Molecule 1 is a protein called Aryl hydrocarbon receptor nuclear translocator.

Mol	Chain	Residues	Atoms					ZeroOcc	AltConf	Trace
1	A	245	Total	C	N	O	S	0	0	0
			1990	1269	345	360	16			

There is a discrepancy between the modelled and reference sequences:

Chain	Residue	Modelled	Actual	Comment	Reference
A	81	MET	-	initiating methionine	UNP P53762

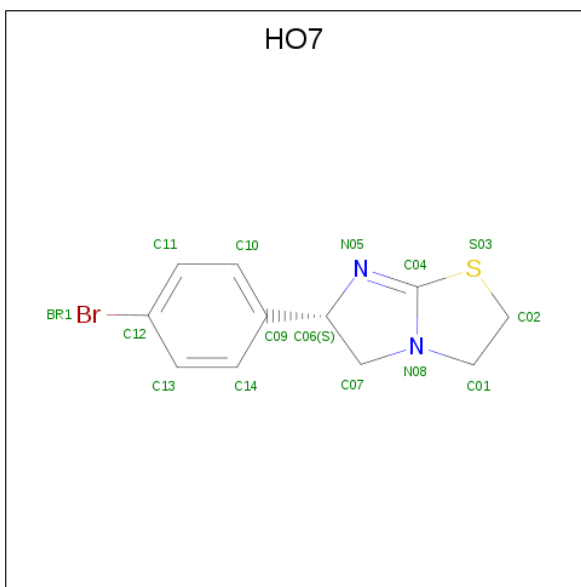
- Molecule 2 is a protein called Endothelial PAS domain-containing protein 1.

Mol	Chain	Residues	Atoms					ZeroOcc	AltConf	Trace
2	B	281	Total	C	N	O	S	0	0	0
			2261	1431	383	424	23			

There are 8 discrepancies between the modelled and reference sequences:

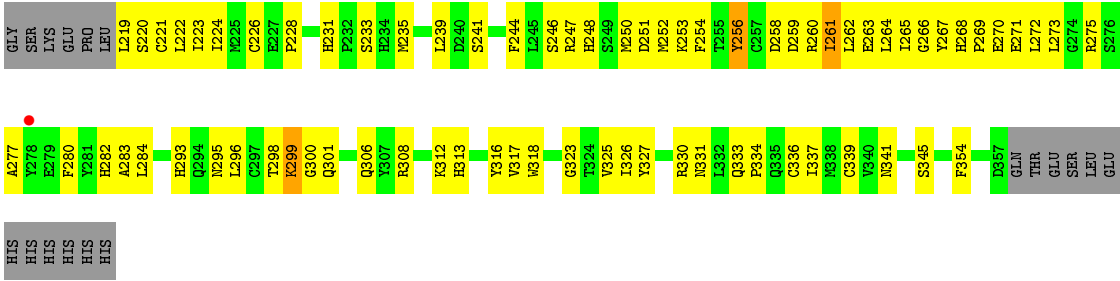
Chain	Residue	Modelled	Actual	Comment	Reference
B	2	MET	-	initiating methionine	UNP P97481
B	363	GLU	-	expression tag	UNP P97481
B	364	HIS	-	expression tag	UNP P97481
B	365	HIS	-	expression tag	UNP P97481
B	366	HIS	-	expression tag	UNP P97481
B	367	HIS	-	expression tag	UNP P97481
B	368	HIS	-	expression tag	UNP P97481
B	369	HIS	-	expression tag	UNP P97481

- Molecule 3 is (6S)-6-(4-bromophenyl)-2,3,5,6-tetrahydroimidazo[2,1-b][1,3]thiazole (three-letter code: HO7) (formula: C<sub>11</sub>H<sub>11</sub>BrN<sub>2</sub>S) (labeled as "Ligand of Interest" by author).



Mol	Chain	Residues	Atoms					ZeroOcc	AltConf
			Total	Br	C	N	S		
3	B	1	15	1	11	2	1	0	0





## 4 Data and refinement statistics

Property	Value	Source
Space group	P 1 21 1	Depositor
Cell constants a, b, c, $\alpha$ , $\beta$ , $\gamma$	49.03 Å 97.98 Å 77.43 Å 90.00° 107.10° 90.00°	Depositor
Resolution (Å)	41.79 – 3.00 46.86 – 2.94	Depositor EDS
% Data completeness (in resolution range)	95.1 (41.79-3.00) 93.7 (46.86-2.94)	Depositor EDS
$R_{merge}$	0.07	Depositor
$R_{sym}$	(Not available)	Depositor
$\langle I/\sigma(I) \rangle$ <sup>1</sup>	2.08 (at 2.96 Å)	Xtriage
Refinement program	PHENIX (dev_2467: ???)	Depositor
R, $R_{free}$	0.245 , 0.306 0.249 , 0.308	Depositor DCC
$R_{free}$ test set	667 reflections (4.76%)	wwPDB-VP
Wilson B-factor (Å <sup>2</sup> )	95.4	Xtriage
Anisotropy	0.472	Xtriage
Bulk solvent $k_{sol}$ (e/Å <sup>3</sup> ), $B_{sol}$ (Å <sup>2</sup> )	0.28 , 78.3	EDS
L-test for twinning <sup>2</sup>	$\langle  L  \rangle = 0.49$ , $\langle L^2 \rangle = 0.33$	Xtriage
Estimated twinning fraction	0.025 for h,-k,-h-l	Xtriage
$F_o, F_c$ correlation	0.89	EDS
Total number of atoms	4266	wwPDB-VP
Average B, all atoms (Å <sup>2</sup> )	114.0	wwPDB-VP

Xtriage's analysis on translational NCS is as follows: *The largest off-origin peak in the Patterson function is 5.52% of the height of the origin peak. No significant pseudotranslation is detected.*

<sup>1</sup>Intensities estimated from amplitudes.

<sup>2</sup>Theoretical values of  $\langle |L| \rangle$ ,  $\langle L^2 \rangle$  for acentric reflections are 0.5, 0.333 respectively for untwinned datasets, and 0.375, 0.2 for perfectly twinned datasets.

## 5 Model quality

### 5.1 Standard geometry

Bond lengths and bond angles in the following residue types are not validated in this section: HO7

The Z score for a bond length (or angle) is the number of standard deviations the observed value is removed from the expected value. A bond length (or angle) with  $|Z| > 5$  is considered an outlier worth inspection. RMSZ is the root-mean-square of all Z scores of the bond lengths (or angles).

Mol	Chain	Bond lengths		Bond angles	
		RMSZ	$\# Z  > 5$	RMSZ	$\# Z  > 5$
1	A	0.54	0/2029	0.76	0/2737
2	B	0.57	0/2305	0.79	0/3107
All	All	0.55	0/4334	0.77	0/5844

There are no bond length outliers.

There are no bond angle outliers.

There are no chirality outliers.

There are no planarity outliers.

### 5.2 Too-close contacts

In the following table, the Non-H and H(model) columns list the number of non-hydrogen atoms and hydrogen atoms in the chain respectively. The H(added) column lists the number of hydrogen atoms added and optimized by MolProbity. The Clashes column lists the number of clashes within the asymmetric unit, whereas Symm-Clashes lists symmetry related clashes.

Mol	Chain	Non-H	H(model)	H(added)	Clashes	Symm-Clashes
1	A	1990	0	1983	146	0
2	B	2261	0	2218	188	0
3	B	15	0	0	1	0
All	All	4266	0	4201	294	0

The all-atom clashscore is defined as the number of clashes found per 1000 atoms (including hydrogen atoms). The all-atom clashscore for this structure is 35.

All (294) close contacts within the same asymmetric unit are listed below, sorted by their clash magnitude.



Atom-1	Atom-2	Interatomic distance (Å)	Clash overlap (Å)
2:B:192:VAL:HG11	2:B:301:GLN:HB2	1.29	1.11
2:B:98:PHE:HB2	2:B:112:SER:CB	1.81	1.09
2:B:192:VAL:HG11	2:B:301:GLN:CB	1.81	1.09
2:B:92:LEU:HD21	2:B:114:ASN:HB3	1.38	1.05
1:A:133:ARG:NH1	2:B:33:VAL:HA	1.72	1.04
1:A:133:ARG:HD3	2:B:33:VAL:HG12	1.40	1.03
2:B:98:PHE:HB2	2:B:112:SER:HB2	1.43	0.99
1:A:373:PHE:CE2	1:A:391:LEU:HD21	1.98	0.98
1:A:133:ARG:NH1	2:B:33:VAL:HG12	1.80	0.96
1:A:133:ARG:NH1	2:B:33:VAL:CG1	2.30	0.95
2:B:98:PHE:HB2	2:B:112:SER:HB3	1.50	0.93
1:A:133:ARG:CZ	2:B:33:VAL:CG1	2.51	0.89
2:B:101:VAL:HG12	2:B:223:ILE:HD13	1.54	0.88
1:A:376:VAL:HG11	1:A:391:LEU:CD2	2.04	0.87
1:A:133:ARG:CD	2:B:33:VAL:HG12	2.04	0.86
1:A:133:ARG:HH12	2:B:33:VAL:HA	1.43	0.83
2:B:92:LEU:CD2	2:B:114:ASN:HB3	2.08	0.83
2:B:282:HIS:HE1	2:B:284:LEU:HD13	1.43	0.82
2:B:267:TYR:HE1	2:B:312:LYS:HA	1.45	0.82
1:A:388:PRO:O	1:A:392:LEU:HD12	1.78	0.82
2:B:308:ARG:HD3	2:B:318:TRP:CZ2	2.16	0.81
1:A:422:VAL:HG12	1:A:444:PHE:HB3	1.61	0.81
1:A:133:ARG:CZ	2:B:33:VAL:HG13	2.11	0.81
1:A:133:ARG:CZ	2:B:33:VAL:HG12	2.10	0.80
2:B:121:LEU:HB3	2:B:126:LEU:HD21	1.63	0.78
2:B:326:ILE:HD11	2:B:336:CYS:SG	2.23	0.78
2:B:122:THR:HG22	2:B:125:GLU:OE1	1.83	0.78
2:B:58:ARG:HD2	2:B:128:GLY:HA3	1.65	0.77
1:A:133:ARG:HH11	2:B:33:VAL:HG12	1.50	0.76
1:A:305:VAL:HG21	2:B:306:GLN:HE21	1.52	0.74
2:B:30:GLU:OE1	2:B:30:GLU:N	2.22	0.73
2:B:244:PHE:O	2:B:341:ASN:ND2	2.22	0.72
1:A:305:VAL:O	1:A:344:GLN:NE2	2.21	0.72
1:A:119:CYS:HB2	1:A:134:MET:HE3	1.71	0.72
1:A:373:PHE:CD2	1:A:391:LEU:HD21	2.24	0.72
2:B:122:THR:HG23	2:B:124:VAL:H	1.53	0.71
1:A:376:VAL:HG11	1:A:391:LEU:HD22	1.72	0.70
2:B:99:ILE:H	2:B:112:SER:HB2	1.57	0.69
2:B:73:VAL:HA	2:B:200:ARG:HH12	1.56	0.69
1:A:125:LYS:HE2	1:A:131:ILE:HD11	1.74	0.69
2:B:39:HIS:HE2	2:B:49:SER:HA	1.58	0.68
2:B:146:ASN:O	2:B:166:ARG:NH1	2.26	0.68

Continued on next page...

*Continued from previous page...*

Atom-1	Atom-2	Interatomic distance (Å)	Clash overlap (Å)
2:B:104:GLN:HB3	2:B:220:SER:HB3	1.75	0.68
2:B:296:LEU:O	2:B:300:GLY:N	2.26	0.68
1:A:366:ARG:HD2	1:A:456:TYR:CD1	2.29	0.67
2:B:98:PHE:CB	2:B:112:SER:CB	2.69	0.67
2:B:192:VAL:CG1	2:B:301:GLN:HE21	2.07	0.67
2:B:267:TYR:CE1	2:B:312:LYS:HA	2.30	0.67
2:B:122:THR:N	2:B:125:GLU:OE1	2.26	0.67
2:B:56:ILE:HD12	2:B:57:MET:N	2.09	0.66
2:B:308:ARG:HD3	2:B:318:TRP:CH2	2.30	0.66
2:B:296:LEU:O	2:B:300:GLY:CA	2.44	0.66
1:A:406:GLN:O	1:A:410:ASP:N	2.27	0.66
2:B:144:ARG:HA	2:B:147:LEU:HD12	1.78	0.66
1:A:133:ARG:NH1	2:B:33:VAL:CA	2.54	0.65
2:B:92:LEU:HD21	2:B:114:ASN:CB	2.21	0.65
1:A:395:ASN:OD1	1:A:397:VAL:HG12	1.97	0.65
1:A:223:GLU:OE1	2:B:241:SER:N	2.25	0.65
2:B:282:HIS:CE1	2:B:284:LEU:HD13	2.30	0.64
1:A:311:TYR:CZ	1:A:338:VAL:HG21	2.32	0.64
1:A:396:ILE:HD12	1:A:396:ILE:H	1.62	0.64
1:A:397:VAL:HG23	1:A:405:GLN:HG2	1.80	0.64
1:A:404:ASP:HA	1:A:407:LEU:HD13	1.80	0.64
2:B:73:VAL:HG12	2:B:200:ARG:HH11	1.63	0.64
1:A:132:LEU:O	1:A:136:VAL:HG23	1.97	0.64
1:A:373:PHE:CD2	1:A:391:LEU:CD2	2.81	0.64
2:B:98:PHE:CB	2:B:112:SER:HB3	2.27	0.64
1:A:376:VAL:HG22	1:A:392:LEU:HD11	1.78	0.63
1:A:185:ARG:HH12	1:A:210:TYR:HD2	1.47	0.63
1:A:113:SER:CB	1:A:125:LYS:HE3	2.28	0.63
1:A:311:TYR:CE2	1:A:338:VAL:HG21	2.34	0.62
1:A:340:ILE:HD12	2:B:95:LEU:CD2	2.29	0.62
2:B:99:ILE:HD12	2:B:224:ILE:O	1.99	0.62
2:B:98:PHE:CB	2:B:112:SER:HB2	2.26	0.62
1:A:365:SER:HB2	1:A:376:VAL:HG12	1.82	0.62
2:B:125:GLU:O	2:B:129:HIS:CE1	2.53	0.61
1:A:178:ILE:HG13	1:A:188:TYR:HB3	1.83	0.61
2:B:296:LEU:O	2:B:300:GLY:HA2	2.01	0.61
1:A:214:HIS:CG	1:A:215:PRO:HD2	2.36	0.61
1:A:399:PHE:O	1:A:430:ARG:HG3	2.01	0.60
1:A:115:MET:HB3	2:B:64:LEU:HD13	1.82	0.60
1:A:305:VAL:HG21	2:B:306:GLN:NE2	2.16	0.60
2:B:192:VAL:HG12	2:B:301:GLN:HE21	1.67	0.60

*Continued on next page...*

*Continued from previous page...*

Atom-1	Atom-2	Interatomic distance (Å)	Clash overlap (Å)
2:B:266:GLY:HA3	2:B:312:LYS:HD3	1.84	0.60
1:A:182:GLU:OE1	1:A:334:LYS:N	2.34	0.60
2:B:64:LEU:HD12	2:B:65:ARG:N	2.17	0.60
2:B:261:ILE:O	2:B:265:ILE:N	2.23	0.60
1:A:376:VAL:HG11	1:A:391:LEU:HD23	1.81	0.59
1:A:133:ARG:NE	2:B:33:VAL:HG12	2.16	0.59
2:B:101:VAL:HG22	2:B:110:PHE:HB3	1.85	0.59
2:B:192:VAL:HG11	2:B:301:GLN:CG	2.33	0.59
2:B:282:HIS:HE1	2:B:284:LEU:CD1	2.15	0.59
2:B:99:ILE:N	2:B:112:SER:HB2	2.17	0.58
1:A:311:TYR:CD1	2:B:93:LYS:HD3	2.38	0.58
2:B:119:MET:CE	2:B:172:MET:HB3	2.33	0.58
1:A:387:GLN:N	1:A:390:GLU:OE1	2.36	0.58
2:B:254:PHE:HE1	2:B:277:ALA:HA	1.69	0.58
1:A:309:THR:HG21	2:B:96:GLU:H	1.68	0.58
2:B:171:ARG:HH22	2:B:298:THR:HG22	1.68	0.57
1:A:129:LEU:O	1:A:133:ARG:HG2	2.04	0.57
1:A:364:ILE:HG13	1:A:377:ASP:OD2	2.04	0.57
1:A:171:ALA:O	2:B:197:GLY:HA2	2.04	0.57
2:B:258:ASP:OD1	2:B:259:ASP:N	2.37	0.57
1:A:421:GLN:HA	1:A:421:GLN:OE1	2.04	0.57
1:A:165:LYS:NZ	1:A:191:ASP:OD1	2.38	0.57
1:A:130:THR:O	1:A:134:MET:HG3	2.05	0.56
1:A:193:VAL:HG13	1:A:197:LEU:HD11	1.86	0.56
2:B:296:LEU:HD21	2:B:337:ILE:HG21	1.87	0.56
1:A:133:ARG:HH11	2:B:33:VAL:HA	1.66	0.56
2:B:254:PHE:HB2	2:B:272:LEU:O	2.06	0.56
2:B:192:VAL:CG1	2:B:301:GLN:NE2	2.68	0.56
2:B:247:ARG:HD3	2:B:256:TYR:HB3	1.88	0.56
1:A:178:ILE:CD1	1:A:338:VAL:HG12	2.36	0.56
1:A:388:PRO:C	1:A:392:LEU:HD12	2.26	0.56
1:A:207:SER:OG	1:A:208:THR:N	2.38	0.55
2:B:268:HIS:HB3	2:B:270:GLU:HG3	1.88	0.55
1:A:366:ARG:HD2	1:A:456:TYR:CG	2.41	0.55
1:A:169:LEU:HD12	1:A:173:ASP:HA	1.89	0.55
1:A:131:ILE:HA	1:A:134:MET:CE	2.37	0.55
1:A:447:GLN:OE1	1:A:447:GLN:N	2.40	0.55
1:A:133:ARG:NH1	2:B:33:VAL:HG13	2.17	0.55
2:B:308:ARG:NH1	2:B:318:TRP:CH2	2.74	0.55
1:A:304:VAL:HG22	1:A:343:LEU:HD11	1.88	0.55
1:A:214:HIS:CE1	1:A:266:ARG:HH22	2.25	0.54

*Continued on next page...*

*Continued from previous page...*

Atom-1	Atom-2	Interatomic distance (Å)	Clash overlap (Å)
2:B:73:VAL:HA	2:B:200:ARG:NH1	2.21	0.54
1:A:266:ARG:HH11	2:B:345:SER:HA	1.72	0.54
2:B:116:SER:HB3	2:B:122:THR:HA	1.88	0.54
2:B:260:ARG:O	2:B:263:GLU:N	2.40	0.54
1:A:381:VAL:HG12	1:A:387:GLN:HA	1.90	0.54
2:B:325:VAL:HG22	2:B:337:ILE:HG12	1.89	0.54
2:B:267:TYR:HD2	2:B:272:LEU:HD21	1.72	0.53
1:A:185:ARG:NH1	1:A:210:TYR:HD2	2.06	0.53
1:A:411:SER:O	1:A:415:VAL:HG13	2.09	0.53
1:A:334:LYS:HG3	1:A:335:PHE:CD1	2.43	0.53
2:B:251:ASP:O	2:B:252:MET:HB2	2.09	0.53
1:A:133:ARG:CD	2:B:33:VAL:CG1	2.85	0.52
2:B:262:LEU:O	2:B:266:GLY:HA2	2.09	0.52
1:A:131:ILE:HA	1:A:134:MET:HE2	1.92	0.52
1:A:213:VAL:CG1	1:A:217:ASP:HB2	2.39	0.52
2:B:171:ARG:NH2	2:B:298:THR:O	2.43	0.52
2:B:267:TYR:HE1	2:B:312:LYS:CA	2.21	0.52
1:A:133:ARG:NE	2:B:33:VAL:CG1	2.73	0.52
1:A:340:ILE:HD12	2:B:95:LEU:HD21	1.89	0.52
1:A:366:ARG:HD2	1:A:456:TYR:CE1	2.44	0.52
2:B:266:GLY:HA3	2:B:312:LYS:HB3	1.92	0.52
2:B:254:PHE:CE1	2:B:277:ALA:HA	2.45	0.52
2:B:246:SER:OG	2:B:248:HIS:CE1	2.63	0.52
1:A:419:LYS:HD3	1:A:454:ILE:HD11	1.90	0.51
2:B:330:ARG:HH11	2:B:330:ARG:HG2	1.73	0.51
2:B:139:ASP:OD2	2:B:171:ARG:HG3	2.09	0.51
1:A:366:ARG:NH1	2:B:283:ALA:HB2	2.25	0.51
2:B:192:VAL:CG1	2:B:301:GLN:HB2	2.21	0.51
2:B:306:GLN:OE1	2:B:306:GLN:N	2.43	0.51
1:A:377:ASP:OD2	1:A:379:ARG:NH1	2.41	0.51
1:A:413:GLN:O	1:A:417:LYS:HD2	2.11	0.51
2:B:166:ARG:CZ	2:B:199:VAL:HG11	2.41	0.51
2:B:261:ILE:HA	2:B:264:LEU:HB2	1.92	0.51
2:B:99:ILE:H	2:B:112:SER:CB	2.23	0.51
1:A:366:ARG:HB3	1:A:375:PHE:HB3	1.92	0.51
1:A:166:HIS:O	1:A:170:GLU:HB3	2.10	0.50
2:B:121:LEU:HB2	2:B:126:LEU:HD11	1.93	0.50
2:B:169:PHE:CE1	2:B:194:HIS:CD2	3.00	0.50
2:B:73:VAL:HG12	2:B:200:ARG:NH1	2.26	0.50
1:A:260:ARG:HA	1:A:311:TYR:HA	1.94	0.50
1:A:404:ASP:OD2	1:A:428:ARG:HG3	2.11	0.50

*Continued on next page...*

*Continued from previous page...*

Atom-1	Atom-2	Interatomic distance (Å)	Clash overlap (Å)
1:A:412:PHE:O	1:A:416:VAL:HG12	2.10	0.50
1:A:450:TYR:CZ	2:B:250:MET:HB3	2.47	0.50
2:B:125:GLU:O	2:B:129:HIS:HE1	1.93	0.50
2:B:327:TYR:CD1	2:B:334:PRO:HA	2.46	0.50
1:A:407:LEU:H	1:A:407:LEU:HD12	1.77	0.50
2:B:164:THR:O	2:B:199:VAL:HG12	2.12	0.50
2:B:293:HIS:O	2:B:296:LEU:HB3	2.12	0.50
1:A:267:MET:SD	1:A:306:VAL:HG11	2.52	0.49
2:B:101:VAL:CG2	2:B:110:PHE:HB3	2.42	0.49
1:A:407:LEU:O	1:A:410:ASP:HB2	2.12	0.49
2:B:108:MET:HE2	2:B:129:HIS:O	2.12	0.49
2:B:183:VAL:HG22	2:B:184:ASN:H	1.78	0.49
2:B:235:MET:SD	2:B:239:LEU:HD21	2.51	0.49
1:A:210:TYR:OH	1:A:222:ARG:HG2	2.12	0.49
2:B:326:ILE:HD12	2:B:326:ILE:O	2.13	0.49
2:B:90:LEU:H	2:B:90:LEU:HD23	1.78	0.49
1:A:133:ARG:HD3	2:B:33:VAL:CG1	2.29	0.49
1:A:178:ILE:HD13	1:A:338:VAL:HG12	1.95	0.49
1:A:122:LEU:HD12	1:A:123:ALA:H	1.75	0.49
2:B:308:ARG:HD2	2:B:316:TYR:CE1	2.47	0.49
2:B:271:GLU:O	2:B:275:ARG:HG3	2.13	0.49
2:B:171:ARG:NH2	2:B:298:THR:HG22	2.28	0.49
1:A:309:THR:HG21	2:B:96:GLU:N	2.28	0.49
1:A:312:ILE:HD12	1:A:312:ILE:O	2.12	0.48
2:B:224:ILE:HD13	2:B:226:CYS:SG	2.53	0.48
2:B:252:MET:CE	2:B:337:ILE:HD12	2.43	0.48
2:B:38:ALA:HA	2:B:41:LEU:HD23	1.94	0.48
2:B:52:ASP:CG	2:B:53:LYS:N	2.67	0.48
1:A:369:ILE:H	1:A:369:ILE:HD12	1.78	0.48
2:B:197:GLY:HA3	2:B:223:ILE:O	2.13	0.48
2:B:308:ARG:HG2	2:B:308:ARG:HH11	1.78	0.48
1:A:311:TYR:O	1:A:337:LEU:HD12	2.14	0.48
1:A:371:GLY:O	1:A:396:ILE:HD12	2.14	0.47
2:B:296:LEU:HD13	2:B:323:GLY:O	2.14	0.47
2:B:192:VAL:HG11	2:B:301:GLN:HB3	1.88	0.47
1:A:139:MET:HB2	1:A:139:MET:HE3	1.83	0.47
2:B:247:ARG:HG3	2:B:336:CYS:SG	2.55	0.47
2:B:327:TYR:HD1	2:B:334:PRO:HA	1.80	0.47
1:A:111:GLU:O	1:A:115:MET:HG2	2.15	0.47
2:B:119:MET:HE2	2:B:172:MET:HB3	1.96	0.47
2:B:252:MET:HE3	2:B:337:ILE:CD1	2.46	0.46

*Continued on next page...*

*Continued from previous page...*

Atom-1	Atom-2	Interatomic distance (Å)	Clash overlap (Å)
1:A:411:SER:HA	1:A:414:GLN:HB2	1.96	0.46
2:B:331:ASN:O	2:B:333:GLN:HG2	2.15	0.46
1:A:175:PHE:CB	1:A:192:SER:HB2	2.46	0.46
2:B:295:ASN:OD1	2:B:299:LYS:NZ	2.48	0.46
2:B:252:MET:HE2	2:B:337:ILE:HD12	1.96	0.46
1:A:165:LYS:HB3	2:B:91:TYR:CZ	2.50	0.46
2:B:45:HIS:HA	2:B:48:SER:OG	2.16	0.46
1:A:163:GLU:OE2	1:A:163:GLU:N	2.49	0.46
1:A:189:VAL:HG21	1:A:193:VAL:HG21	1.98	0.46
2:B:121:LEU:CB	2:B:126:LEU:HD21	2.39	0.46
2:B:115:ILE:HG23	2:B:116:SER:N	2.32	0.45
2:B:137:PRO:HA	2:B:140:HIS:CG	2.51	0.45
1:A:107:ALA:O	1:A:111:GLU:HB2	2.15	0.45
1:A:221:LEU:HA	1:A:221:LEU:HD12	1.84	0.45
1:A:311:TYR:CE1	2:B:93:LYS:HD3	2.51	0.45
1:A:127:ASP:O	1:A:131:ILE:N	2.29	0.45
2:B:112:SER:HB3	2:B:114:ASN:OD1	2.16	0.45
2:B:244:PHE:CE1	2:B:261:ILE:HD12	2.52	0.45
2:B:260:ARG:O	2:B:262:LEU:N	2.50	0.45
2:B:39:HIS:HE1	2:B:49:SER:OG	1.99	0.45
1:A:139:MET:HE1	2:B:37:LEU:HD12	1.97	0.44
1:A:430:ARG:HH21	1:A:434:ARG:CZ	2.31	0.44
2:B:197:GLY:N	2:B:224:ILE:HG22	2.32	0.44
1:A:167:LEU:HA	1:A:167:LEU:HD23	1.79	0.44
1:A:221:LEU:O	1:A:224:GLN:N	2.50	0.44
1:A:111:GLU:OE1	2:B:61:ILE:HD13	2.17	0.44
1:A:111:GLU:OE1	2:B:61:ILE:HG21	2.17	0.44
2:B:164:THR:HG23	2:B:199:VAL:O	2.18	0.43
2:B:312:LYS:HG3	2:B:313:HIS:N	2.33	0.43
1:A:134:MET:HG3	1:A:134:MET:H	1.65	0.43
1:A:186:VAL:HG11	1:A:204:TRP:O	2.18	0.43
2:B:251:ASP:OD1	2:B:253:LYS:HG2	2.18	0.43
2:B:269:PRO:O	2:B:273:LEU:HD23	2.19	0.43
1:A:375:PHE:HA	2:B:354:PHE:O	2.18	0.43
2:B:121:LEU:HD13	2:B:126:LEU:HD21	2.01	0.43
2:B:262:LEU:HD22	2:B:266:GLY:C	2.39	0.43
2:B:325:VAL:HG12	2:B:327:TYR:CE1	2.53	0.43
1:A:367:HIS:HE1	1:A:373:PHE:CD2	2.36	0.43
1:A:433:THR:O	1:A:434:ARG:HB2	2.19	0.43
1:A:110:THR:HA	1:A:125:LYS:NZ	2.34	0.43
2:B:39:HIS:NE2	2:B:49:SER:HA	2.31	0.43

*Continued on next page...*

*Continued from previous page...*

Atom-1	Atom-2	Interatomic distance (Å)	Clash overlap (Å)
2:B:52:ASP:O	2:B:56:ILE:HG13	2.18	0.43
1:A:214:HIS:ND1	1:A:215:PRO:HD2	2.34	0.42
1:A:423:LEU:HA	1:A:423:LEU:HD23	1.83	0.42
1:A:449:PRO:HG2	2:B:293:HIS:ND1	2.34	0.42
2:B:137:PRO:HA	2:B:140:HIS:ND1	2.34	0.42
2:B:199:VAL:HA	2:B:221:CYS:O	2.19	0.42
1:A:116:VAL:HB	1:A:119:CYS:HB3	2.01	0.42
2:B:231:HIS:CE1	2:B:233:SER:HB3	2.53	0.42
1:A:343:LEU:HD12	1:A:343:LEU:HA	1.70	0.42
2:B:96:GLU:O	2:B:228:PRO:HD2	2.20	0.42
1:A:364:ILE:CD1	2:B:283:ALA:HB3	2.49	0.42
2:B:121:LEU:HD13	2:B:126:LEU:CD2	2.50	0.42
2:B:248:HIS:HB3	2:B:252:MET:HA	2.01	0.42
2:B:65:ARG:HH11	2:B:109:ILE:HG21	1.84	0.42
1:A:185:ARG:HD2	1:A:208:THR:HB	2.02	0.42
2:B:56:ILE:H	2:B:56:ILE:HG13	1.66	0.42
1:A:189:VAL:CG2	1:A:193:VAL:HG21	2.50	0.41
1:A:444:PHE:CZ	1:A:458:ILE:HB	2.55	0.41
1:A:128:LYS:O	1:A:129:LEU:C	2.59	0.41
1:A:223:GLU:OE1	2:B:241:SER:OG	2.37	0.41
1:A:187:VAL:HG11	1:A:336:CYS:SG	2.61	0.41
1:A:178:ILE:HD12	1:A:338:VAL:HG12	2.01	0.41
2:B:136:HIS:HA	2:B:137:PRO:HD2	1.91	0.41
2:B:60:ALA:O	2:B:64:LEU:HG	2.20	0.41
2:B:70:LEU:O	2:B:73:VAL:HG22	2.21	0.41
2:B:169:PHE:HA	2:B:193:LEU:O	2.20	0.41
2:B:235:MET:HB3	2:B:235:MET:HE3	1.73	0.41
2:B:45:HIS:O	2:B:49:SER:OG	2.32	0.41
1:A:372:ILE:HD12	1:A:395:ASN:HD22	1.84	0.41
1:A:434:ARG:HA	1:A:434:ARG:HD3	1.75	0.41
1:A:113:SER:HB3	1:A:125:LYS:HE3	2.01	0.41
2:B:108:MET:O	2:B:128:GLY:N	2.38	0.41
2:B:193:LEU:HA	2:B:193:LEU:HD23	1.85	0.41
1:A:367:HIS:CE1	1:A:373:PHE:CD2	3.08	0.41
1:A:104:LYS:HE2	1:A:108:TYR:CE1	2.55	0.40
1:A:373:PHE:HB2	1:A:392:LEU:HA	2.02	0.40
1:A:373:PHE:CE2	1:A:391:LEU:CD2	2.86	0.40
1:A:362:GLU:C	1:A:383:THR:HG21	2.41	0.40
2:B:265:ILE:HG12	2:B:317:VAL:HG21	2.03	0.40
1:A:373:PHE:CE1	1:A:396:ILE:HG13	2.57	0.40
1:A:392:LEU:HD21	2:B:354:PHE:O	2.20	0.40

*Continued on next page...*

*Continued from previous page...*

Atom-1	Atom-2	Interatomic distance (Å)	Clash overlap (Å)
2:B:267:TYR:HE2	2:B:280:PHE:CD1	2.39	0.40
2:B:35:TYR:O	2:B:39:HIS:CD2	2.74	0.40
2:B:112:SER:O	2:B:115:ILE:HB	2.22	0.40
2:B:339:CYS:SG	3:B:401:HO7:C14	3.09	0.40
1:A:437:LEU:HD21	1:A:463:ASN:HD22	1.85	0.40
2:B:101:VAL:HA	2:B:222:LEU:O	2.22	0.40

There are no symmetry-related clashes.

## 5.3 Torsion angles [i](#)

### 5.3.1 Protein backbone [i](#)

In the following table, the Percentiles column shows the percent Ramachandran outliers of the chain as a percentile score with respect to all X-ray entries followed by that with respect to entries of similar resolution.

The Analysed column shows the number of residues for which the backbone conformation was analysed, and the total number of residues.

Mol	Chain	Analysed	Favoured	Allowed	Outliers	Percentiles	
1	A	231/384 (60%)	215 (93%)	16 (7%)	0	100	100
2	B	269/368 (73%)	252 (94%)	16 (6%)	1 (0%)	34	72
All	All	500/752 (66%)	467 (93%)	32 (6%)	1 (0%)	47	82

All (1) Ramachandran outliers are listed below:

Mol	Chain	Res	Type
2	B	261	ILE

### 5.3.2 Protein sidechains [i](#)

In the following table, the Percentiles column shows the percent sidechain outliers of the chain as a percentile score with respect to all X-ray entries followed by that with respect to entries of similar resolution.

The Analysed column shows the number of residues for which the sidechain conformation was analysed, and the total number of residues.



Mol	Chain	Analysed	Rotameric	Outliers	Percentiles	
1	A	227/347 (65%)	219 (96%)	8 (4%)	36	71
2	B	260/337 (77%)	249 (96%)	11 (4%)	30	66
All	All	487/684 (71%)	468 (96%)	19 (4%)	32	69

All (19) residues with a non-rotameric sidechain are listed below:

Mol	Chain	Res	Type
1	A	132	LEU
1	A	190	SER
1	A	260	ARG
1	A	268	ARG
1	A	391	LEU
1	A	423	LEU
1	A	442	SER
1	A	456	TYR
2	B	33	VAL
2	B	34	PHE
2	B	52	ASP
2	B	58	ARG
2	B	88	ASP
2	B	112	SER
2	B	113	GLU
2	B	126	LEU
2	B	219	LEU
2	B	256	TYR
2	B	299	LYS

Some sidechains can be flipped to improve hydrogen bonding and reduce clashes. All (8) such sidechains are listed below:

Mol	Chain	Res	Type
1	A	199	GLN
1	A	367	HIS
1	A	405	GLN
1	A	447	GLN
1	A	463	ASN
2	B	39	HIS
2	B	248	HIS
2	B	301	GLN

### 5.3.3 RNA ⓘ

There are no RNA molecules in this entry.

## 5.4 Non-standard residues in protein, DNA, RNA chains ⓘ

There are no non-standard protein/DNA/RNA residues in this entry.

## 5.5 Carbohydrates ⓘ

There are no carbohydrates in this entry.

## 5.6 Ligand geometry ⓘ

1 ligand is modelled in this entry.

In the following table, the Counts columns list the number of bonds (or angles) for which Mogul statistics could be retrieved, the number of bonds (or angles) that are observed in the model and the number of bonds (or angles) that are defined in the Chemical Component Dictionary. The Link column lists molecule types, if any, to which the group is linked. The Z score for a bond length (or angle) is the number of standard deviations the observed value is removed from the expected value. A bond length (or angle) with  $|Z| > 2$  is considered an outlier worth inspection. RMSZ is the root-mean-square of all Z scores of the bond lengths (or angles).

Mol	Type	Chain	Res	Link	Bond lengths			Bond angles		
					Counts	RMSZ	# $ Z  > 2$	Counts	RMSZ	# $ Z  > 2$
3	HO7	B	401	-	15,17,17	2.24	4 (26%)	17,24,24	3.58	9 (52%)

In the following table, the Chirals column lists the number of chiral outliers, the number of chiral centers analysed, the number of these observed in the model and the number defined in the Chemical Component Dictionary. Similar counts are reported in the Torsion and Rings columns. '-' means no outliers of that kind were identified.

Mol	Type	Chain	Res	Link	Chirals	Torsions	Rings
3	HO7	B	401	-	-	1/4/22/22	0/3/3/3

All (4) bond length outliers are listed below:

Mol	Chain	Res	Type	Atoms	Z	Observed(Å)	Ideal(Å)
3	B	401	HO7	C04-S03	-5.29	1.66	1.75
3	B	401	HO7	C04-N08	4.50	1.48	1.35
3	B	401	HO7	C01-N08	3.56	1.54	1.47
3	B	401	HO7	C02-C01	2.46	1.57	1.51

All (9) bond angle outliers are listed below:

Mol	Chain	Res	Type	Atoms	Z	Observed(°)	Ideal(°)
3	B	401	HO7	C07-C06-N05	10.91	114.03	104.92
3	B	401	HO7	C07-C06-C09	-4.70	107.95	113.98
3	B	401	HO7	C02-S03-C04	4.49	98.28	91.26
3	B	401	HO7	C14-C09-C06	-3.85	116.02	120.70
3	B	401	HO7	C09-C06-N05	-3.56	106.00	111.76
3	B	401	HO7	C11-C10-C09	-2.44	118.74	121.20
3	B	401	HO7	C02-C01-N08	-2.27	101.83	106.85
3	B	401	HO7	C14-C09-C10	2.18	121.01	118.29
3	B	401	HO7	BR1-C12-C11	2.04	122.26	119.30

There are no chirality outliers.

All (1) torsion outliers are listed below:

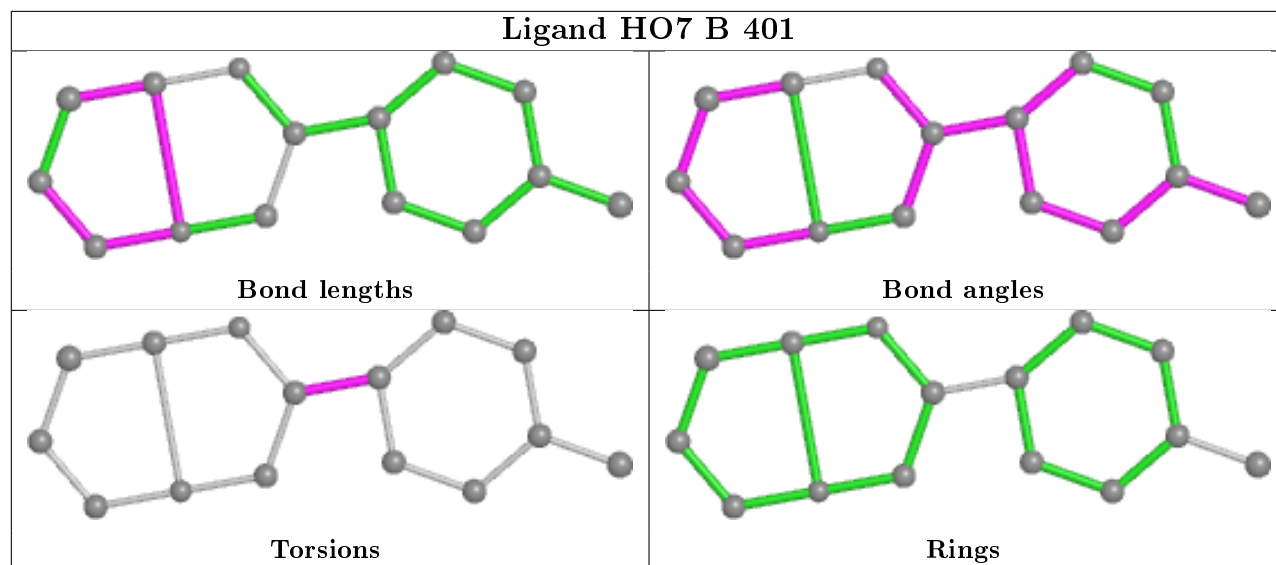
Mol	Chain	Res	Type	Atoms
3	B	401	HO7	N05-C06-C09-C10

There are no ring outliers.

1 monomer is involved in 1 short contact:

Mol	Chain	Res	Type	Clashes	Symm-Clashes
3	B	401	HO7	1	0

The following is a two-dimensional graphical depiction of Mogul quality analysis of bond lengths, bond angles, torsion angles, and ring geometry for all instances of the Ligand of Interest. In addition, ligands with molecular weight > 250 and outliers as shown on the validation Tables will also be included. For torsion angles, if less than 5% of the Mogul distribution of torsion angles is within 10 degrees of the torsion angle in question, then that torsion angle is considered an outlier. Any bond that is central to one or more torsion angles identified as an outlier by Mogul will be highlighted in the graph. For rings, the root-mean-square deviation (RMSD) between the ring in question and similar rings identified by Mogul is calculated over all ring torsion angles. If the average RMSD is greater than 60 degrees and the minimal RMSD between the ring in question and any Mogul-identified rings is also greater than 60 degrees, then that ring is considered an outlier. The outliers are highlighted in purple. The color gray indicates Mogul did not find sufficient equivalents in the CSD to analyse the geometry.



## 5.7 Other polymers [i](#)

There are no such residues in this entry.

## 5.8 Polymer linkage issues [i](#)

There are no chain breaks in this entry.

## 6 Fit of model and data [i](#)

### 6.1 Protein, DNA and RNA chains [i](#)

In the following table, the column labelled ‘#RSRZ> 2’ contains the number (and percentage) of RSRZ outliers, followed by percent RSRZ outliers for the chain as percentile scores relative to all X-ray entries and entries of similar resolution. The OWAB column contains the minimum, median, 95<sup>th</sup> percentile and maximum values of the occupancy-weighted average B-factor per residue. The column labelled ‘Q< 0.9’ lists the number of (and percentage) of residues with an average occupancy less than 0.9.

Mol	Chain	Analysed	<RSRZ>	#RSRZ>2		OWAB(Å <sup>2</sup> )	Q<0.9
1	A	245/384 (63%)	0.02	8 (3%)	46 20	71, 115, 157, 172	0
2	B	281/368 (76%)	-0.15	3 (1%)	80 56	68, 108, 156, 187	0
All	All	526/752 (69%)	-0.07	11 (2%)	63 34	68, 111, 157, 187	0

All (11) RSRZ outliers are listed below:

Mol	Chain	Res	Type	RSRZ
2	B	112	SER	7.5
1	A	136	VAL	5.4
2	B	278	TYR	4.6
2	B	50	HIS	3.5
1	A	207	SER	2.8
1	A	186	VAL	2.8
1	A	391	LEU	2.4
1	A	367	HIS	2.4
1	A	184	GLY	2.4
1	A	182	GLU	2.1
1	A	392	LEU	2.0

### 6.2 Non-standard residues in protein, DNA, RNA chains [i](#)

There are no non-standard protein/DNA/RNA residues in this entry.

### 6.3 Carbohydrates [i](#)

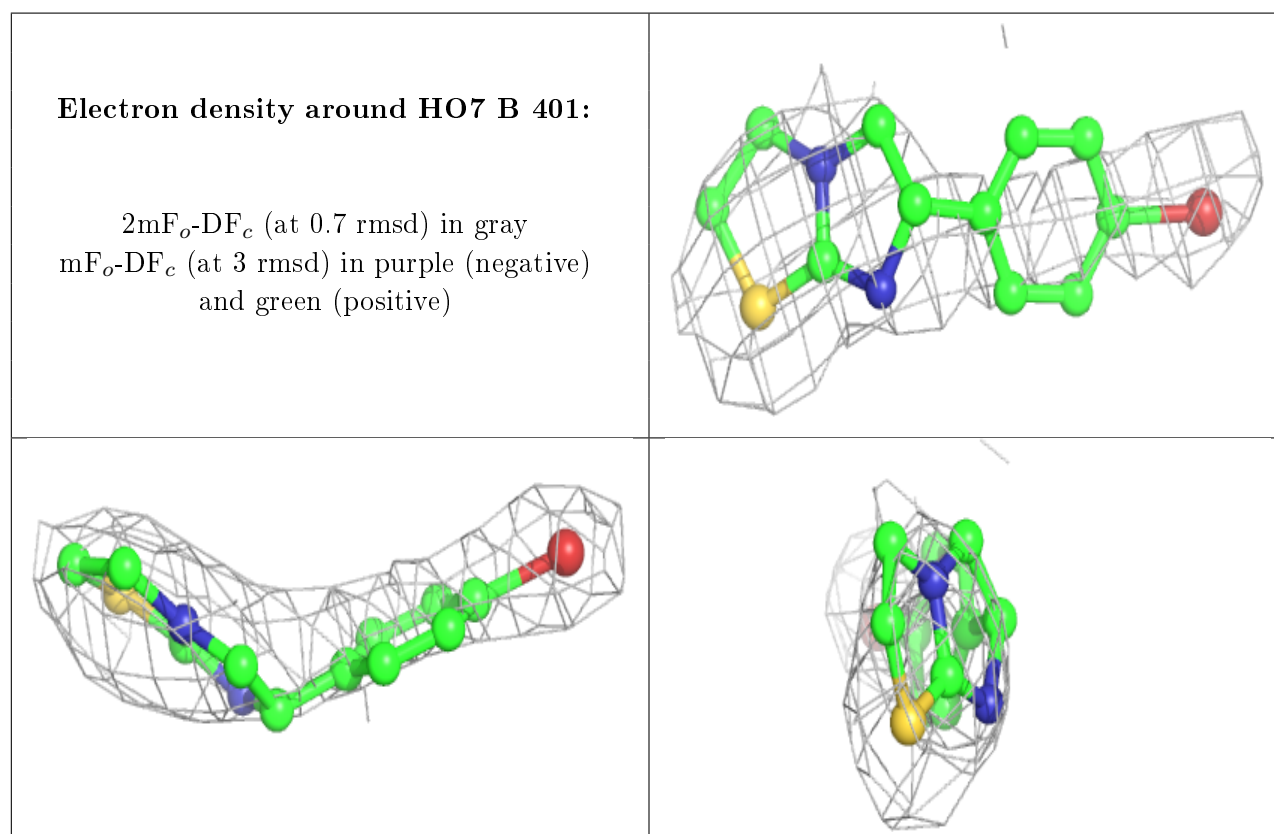
There are no carbohydrates in this entry.

## 6.4 Ligands [i](#)

In the following table, the Atoms column lists the number of modelled atoms in the group and the number defined in the chemical component dictionary. The B-factors column lists the minimum, median, 95<sup>th</sup> percentile and maximum values of B factors of atoms in the group. The column labelled 'Q<0.9' lists the number of atoms with occupancy less than 0.9.

Mol	Type	Chain	Res	Atoms	RSCC	RSR	B-factors(Å <sup>2</sup> )	Q<0.9
3	HO7	B	401	15/15	0.88	0.48	110,125,152,169	0

The following is a graphical depiction of the model fit to experimental electron density of all instances of the Ligand of Interest. In addition, ligands with molecular weight > 250 and outliers as shown on the geometry validation Tables will also be included. Each fit is shown from different orientation to approximate a three-dimensional view.



## 6.5 Other polymers [i](#)

There are no such residues in this entry.