



Full wwPDB X-ray Structure Validation Report ⓘ

Apr 17, 2021 – 10:09 PM JST

PDB ID : 7E35
Title : Crystal structure of the SARS-CoV-2 papain-like protease (PLPro) C112S mutant bound to compound S43
Authors : Liu, J.; Wang, Y.; Xu, X.; Pan, L.
Deposited on : 2021-02-08
Resolution : 2.40 Å(reported)

This is a Full wwPDB X-ray Structure Validation Report for a publicly released PDB entry.

We welcome your comments at validation@mail.wwpdb.org

A user guide is available at

<https://www.wwpdb.org/validation/2017/XrayValidationReportHelp>

with specific help available everywhere you see the ⓘ symbol.

The following versions of software and data (see [references ⓘ](#)) were used in the production of this report:

MolProbity : 4.02b-467
Mogul : 1.8.5 (274361), CSD as541be (2020)
Xtriage (Phenix) : 1.13
EDS : 2.18
buster-report : 1.1.7 (2018)
Percentile statistics : 20191225.v01 (using entries in the PDB archive December 25th 2019)
Refmac : 5.8.0158
CCP4 : 7.0.044 (Gargrove)
Ideal geometry (proteins) : Engh & Huber (2001)
Ideal geometry (DNA, RNA) : Parkinson et al. (1996)
Validation Pipeline (wwPDB-VP) : 2.18

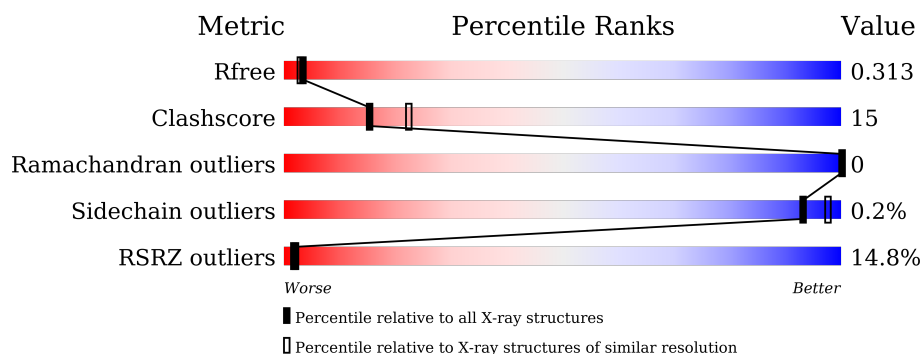
1 Overall quality at a glance

The following experimental techniques were used to determine the structure:

X-RAY DIFFRACTION

The reported resolution of this entry is 2.40 Å.

Percentile scores (ranging between 0-100) for global validation metrics of the entry are shown in the following graphic. The table shows the number of entries on which the scores are based.



Metric	Whole archive (#Entries)	Similar resolution (#Entries, resolution range(Å))
R_{free}	130704	3907 (2.40-2.40)
Clashscore	141614	4398 (2.40-2.40)
Ramachandran outliers	138981	4318 (2.40-2.40)
Sidechain outliers	138945	4319 (2.40-2.40)
RSRZ outliers	127900	3811 (2.40-2.40)

The table below summarises the geometric issues observed across the polymeric chains and their fit to the electron density. The red, orange, yellow and green segments of the lower bar indicate the fraction of residues that contain outliers for ≥ 3 , 2, 1 and 0 types of geometric quality criteria respectively. A grey segment represents the fraction of residues that are not modelled. The numeric value for each fraction is indicated below the corresponding segment, with a dot representing fractions $\leq 5\%$. The upper red bar (where present) indicates the fraction of residues that have poor fit to the electron density. The numeric value is given above the bar.

Mol	Chain	Length	Quality of chain
1	A	315	<div> <div>4%</div> <div>74%</div> <div>25%</div> <div>.</div> </div>
1	B	315	<div> <div>24%</div> <div>65%</div> <div>25%</div> <div>.</div> <div>9%</div> </div>

2 Entry composition

There are 3 unique types of molecules in this entry. The entry contains 4472 atoms, of which 0 are hydrogens and 0 are deuteriums.

In the tables below, the ZeroOcc column contains the number of atoms modelled with zero occupancy, the AltConf column contains the number of residues with at least one atom in alternate conformation and the Trace column contains the number of residues modelled with at most 2 atoms.

- Molecule 1 is a protein called Non-structural protein 3.

Mol	Chain	Residues	Atoms					ZeroOcc	AltConf	Trace
1	B	287	Total	C	N	O	S	0	0	0
			2017	1285	337	381	14			
1	A	315	Total	C	N	O	S	0	0	0
			2389	1537	392	442	18			

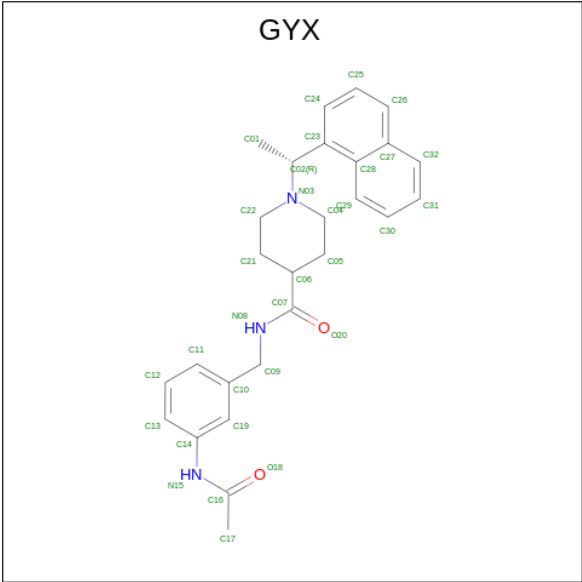
There are 2 discrepancies between the modelled and reference sequences:

Chain	Residue	Modelled	Actual	Comment	Reference
B	112	SER	CYS	engineered mutation	UNP P0DTD1
A	112	SER	CYS	engineered mutation	UNP P0DTD1

- Molecule 2 is ZINC ION (three-letter code: ZN) (formula: Zn).

Mol	Chain	Residues	Atoms		ZeroOcc	AltConf
2	B	1	Total	Zn	0	0
			1	1		
2	A	1	Total	Zn	0	0
			1	1		

- Molecule 3 is N-[(3-acetamidophenyl)methyl]-1-[(1R)-1-naphthalen-1-ylethyl]piperidine-4-carboxamide (three-letter code: GYX) (formula: C₂₇H₃₁N₃O₂) (labeled as "Ligand of Interest" by depositor).

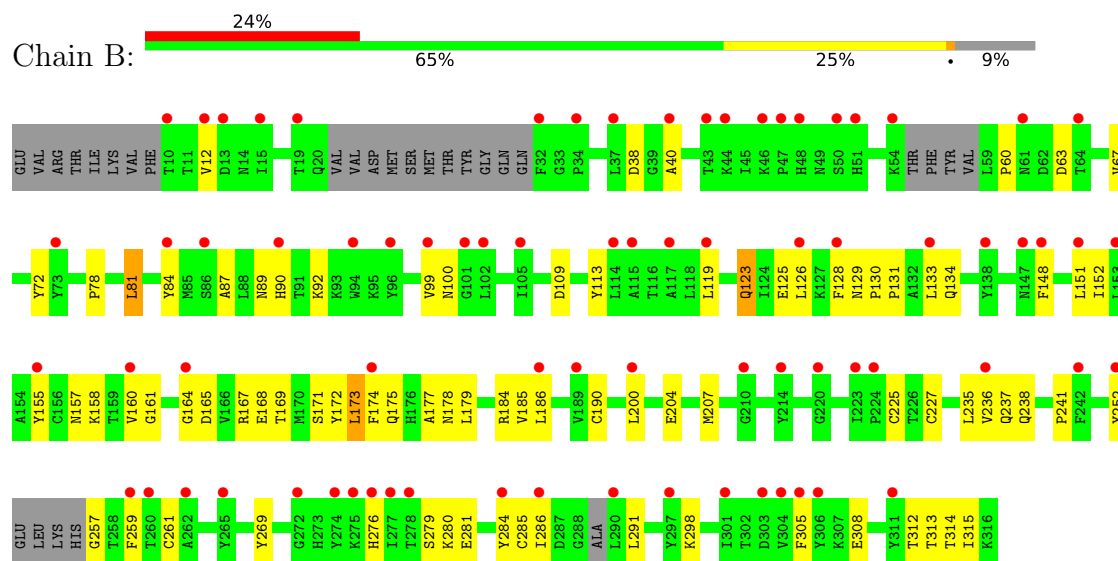


Mol	Chain	Residues	Atoms				ZeroOcc	AltConf
3	B	1	Total	C	N	O	0	0
			32	27	3	2		
3	A	1	Total	C	N	O	0	0
			32	27	3	2		

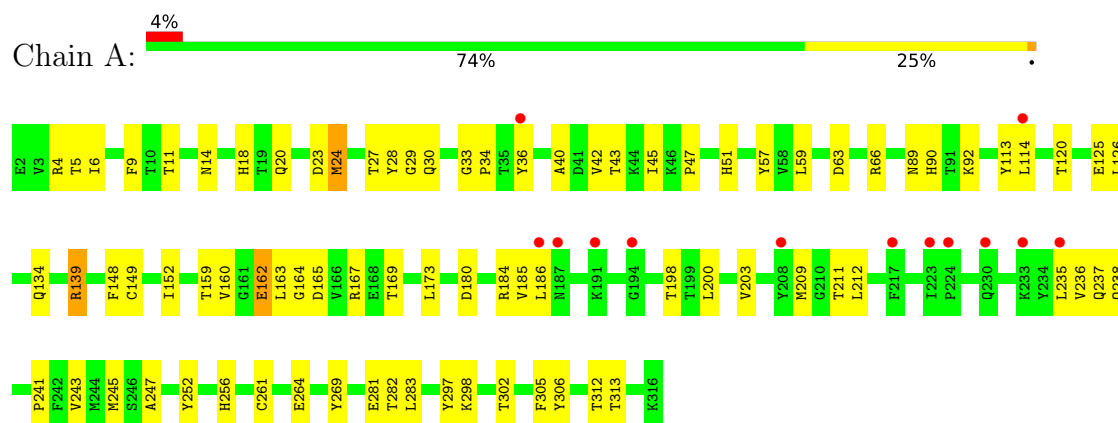
3 Residue-property plots [i](#)

These plots are drawn for all protein, RNA, DNA and oligosaccharide chains in the entry. The first graphic for a chain summarises the proportions of the various outlier classes displayed in the second graphic. The second graphic shows the sequence view annotated by issues in geometry and electron density. Residues are color-coded according to the number of geometric quality criteria for which they contain at least one outlier: green = 0, yellow = 1, orange = 2 and red = 3 or more. A red dot above a residue indicates a poor fit to the electron density ($RSRZ > 2$). Stretches of 2 or more consecutive residues without any outlier are shown as a green connector. Residues present in the sample, but not in the model, are shown in grey.

• Molecule 1: Non-structural protein 3



• Molecule 1: Non-structural protein 3



4 Data and refinement statistics

Property	Value	Source
Space group	P 65 2 2	Depositor
Cell constants a, b, c, α , β , γ	99.82Å 99.82Å 298.32Å 90.00° 90.00° 120.00°	Depositor
Resolution (Å)	86.45 – 2.40 86.45 – 2.40	Depositor EDS
% Data completeness (in resolution range)	48.2 (86.45-2.40) 48.4 (86.45-2.40)	Depositor EDS
R_{merge}	0.17	Depositor
R_{sym}	(Not available)	Depositor
$\langle I/\sigma(I) \rangle$ ¹	1.42 (at 2.40Å)	Xtriage
Refinement program	PHENIX 1.18.2_3874, PHENIX 1.18.2_3874	Depositor
R, R_{free}	0.281 , 0.317 0.279 , 0.313	Depositor DCC
R_{free} test set	871 reflections (5.09%)	wwPDB-VP
Wilson B-factor (Å ²)	53.4	Xtriage
Anisotropy	0.082	Xtriage
Bulk solvent k_{sol} (e/Å ³), B_{sol} (Å ²)	0.32 , 74.6	EDS
L-test for twinning ²	$\langle L \rangle = 0.49$, $\langle L^2 \rangle = 0.32$	Xtriage
Estimated twinning fraction	No twinning to report.	Xtriage
F_o, F_c correlation	0.83	EDS
Total number of atoms	4472	wwPDB-VP
Average B, all atoms (Å ²)	72.0	wwPDB-VP

Xtriage's analysis on translational NCS is as follows: *The largest off-origin peak in the Patterson function is 4.27% of the height of the origin peak. No significant pseudotranslation is detected.*

¹Intensities estimated from amplitudes.

²Theoretical values of $\langle |L| \rangle$, $\langle L^2 \rangle$ for acentric reflections are 0.5, 0.333 respectively for untwinned datasets, and 0.375, 0.2 for perfectly twinned datasets.

5 Model quality

5.1 Standard geometry

Bond lengths and bond angles in the following residue types are not validated in this section: GYX, ZN

The Z score for a bond length (or angle) is the number of standard deviations the observed value is removed from the expected value. A bond length (or angle) with $|Z| > 5$ is considered an outlier worth inspection. RMSZ is the root-mean-square of all Z scores of the bond lengths (or angles).

Mol	Chain	Bond lengths		Bond angles	
		RMSZ	$\# Z > 5$	RMSZ	$\# Z > 5$
1	A	0.72	1/2447 (0.0%)	1.04	8/3332 (0.2%)
1	B	0.50	0/2061	0.90	5/2819 (0.2%)
All	All	0.63	1/4508 (0.0%)	0.98	13/6151 (0.2%)

All (1) bond length outliers are listed below:

Mol	Chain	Res	Type	Atoms	Z	Observed(Å)	Ideal(Å)
1	A	261	CYS	CB-SG	-6.13	1.71	1.82

All (13) bond angle outliers are listed below:

Mol	Chain	Res	Type	Atoms	Z	Observed(°)	Ideal(°)
1	B	123	GLN	CA-CB-CG	9.83	135.02	113.40
1	A	209	MET	CB-CG-SD	9.08	139.65	112.40
1	A	209	MET	CG-SD-CE	-8.12	87.21	100.20
1	A	126	LEU	CB-CG-CD1	-6.61	99.76	111.00
1	B	126	LEU	CB-CG-CD2	-6.36	100.19	111.00
1	A	20	GLN	N-CA-CB	5.83	121.10	110.60
1	A	24	MET	CG-SD-CE	5.64	109.22	100.20
1	A	139	ARG	NE-CZ-NH2	5.58	123.09	120.30
1	B	123	GLN	N-CA-CB	-5.54	100.63	110.60
1	A	162	GLU	CA-CB-CG	5.38	125.24	113.40
1	B	81	LEU	CA-CB-CG	5.16	127.16	115.30
1	B	173	LEU	CA-CB-CG	-5.15	103.46	115.30
1	A	200	LEU	CB-CG-CD2	5.03	119.56	111.00

There are no chirality outliers.

There are no planarity outliers.

5.2 Too-close contacts ⓘ

In the following table, the Non-H and H(model) columns list the number of non-hydrogen atoms and hydrogen atoms in the chain respectively. The H(added) column lists the number of hydrogen atoms added and optimized by MolProbity. The Clashes column lists the number of clashes within the asymmetric unit, whereas Symm-Clashes lists symmetry-related clashes.

Mol	Chain	Non-H	H(model)	H(added)	Clashes	Symm-Clashes
1	A	2389	0	2244	56	0
1	B	2017	0	1743	73	0
2	A	1	0	0	0	0
2	B	1	0	0	0	0
3	A	32	0	0	2	0
3	B	32	0	0	0	0
All	All	4472	0	3987	126	0

The all-atom clashscore is defined as the number of clashes found per 1000 atoms (including hydrogen atoms). The all-atom clashscore for this structure is 15.

All (126) close contacts within the same asymmetric unit are listed below, sorted by their clash magnitude.

Atom-1	Atom-2	Interatomic distance (Å)	Clash overlap (Å)
1:B:261:CYS:HG	1:B:305:PHE:HD1	1.14	0.95
1:A:34:PRO:HB2	1:A:59:LEU:HD21	1.58	0.86
1:B:184:ARG:HE	1:B:238:GLN:NE2	1.74	0.86
1:B:284:TYR:HB3	1:B:291:LEU:HD11	1.59	0.85
1:B:128:PHE:H	1:B:134:GLN:HE21	1.28	0.80
1:B:186:LEU:HD22	1:B:235:LEU:HA	1.62	0.79
1:A:237:GLN:HG2	1:A:312:THR:HG22	1.62	0.79
1:B:200:LEU:HD23	1:B:204:GLU:HB3	1.68	0.75
1:B:148:PHE:O	1:B:152:ILE:HD12	1.86	0.75
1:B:123:GLN:OE1	1:B:276:HIS:NE2	2.21	0.74
1:A:252:TYR:O	1:A:298:LYS:HA	1.89	0.72
1:B:128:PHE:H	1:B:134:GLN:NE2	1.87	0.72
1:B:257:GLY:N	1:B:279:SER:HG	1.86	0.72
1:A:59:LEU:HD22	1:A:59:LEU:N	2.07	0.69
1:B:40:ALA:HA	1:B:89:ASN:ND2	2.09	0.68
1:B:286:ILE:HG13	1:B:291:LEU:HD13	1.77	0.66
1:B:174:PHE:CD2	1:B:207:MET:HE3	2.31	0.66
1:B:72:TYR:HA	1:B:131:PRO:HG2	1.77	0.66
1:B:158:LYS:NZ	1:B:164:GLY:HA2	2.11	0.66
1:B:171:SER:HA	1:B:207:MET:HE1	1.78	0.65
1:B:184:ARG:HE	1:B:238:GLN:HE21	1.46	0.64

Continued on next page...

Continued from previous page...

Atom-1	Atom-2	Interatomic distance (Å)	Clash overlap (Å)
1:A:5:THR:HG22	1:A:23:ASP:HA	1.80	0.64
1:B:128:PHE:HB2	1:B:134:GLN:HG2	1.80	0.63
1:A:163:LEU:HB3	3:A:402:GYX:C09	2.28	0.63
1:B:148:PHE:CD2	1:B:152:ILE:HD11	2.34	0.62
1:B:60:PRO:HD3	1:B:81:LEU:HD22	1.82	0.61
1:A:90:HIS:HB2	1:A:160:VAL:HG21	1.81	0.61
1:B:40:ALA:HA	1:B:89:ASN:HD22	1.66	0.61
1:A:29:GLY:HA2	1:A:33:GLY:O	2.01	0.61
1:B:148:PHE:CE2	1:B:152:ILE:HD11	2.36	0.59
1:B:129:ASN:OD1	1:B:178:ASN:HB2	2.03	0.59
1:B:184:ARG:NE	1:B:238:GLN:NE2	2.49	0.58
1:A:159:THR:N	1:A:162:GLU:OE1	2.30	0.58
1:A:34:PRO:CB	1:A:59:LEU:HD21	2.32	0.58
1:B:128:PHE:N	1:B:134:GLN:HE21	2.00	0.58
1:B:237:GLN:HG2	1:B:312:THR:HG22	1.83	0.58
1:A:63:ASP:HA	1:A:66:ARG:HH21	1.68	0.58
1:A:134:GLN:HA	1:A:134:GLN:OE1	2.04	0.57
1:A:4:ARG:HB3	1:A:24:MET:HE3	1.86	0.57
1:B:172:TYR:O	1:B:175:GLN:HB2	2.03	0.57
1:B:285:CYS:O	1:B:291:LEU:HD12	2.04	0.57
1:B:269:TYR:HE1	1:A:269:TYR:HE1	1.54	0.56
1:B:12:VAL:HG11	1:B:60:PRO:HG3	1.87	0.56
1:B:38:ASP:O	1:B:92:LYS:NZ	2.32	0.56
1:A:211:THR:O	1:A:245:MET:HB3	2.05	0.56
1:B:313:THR:CG2	1:B:315:ILE:HD12	2.36	0.55
1:A:9:PHE:HA	1:A:18:HIS:O	2.06	0.55
1:A:4:ARG:HB3	1:A:24:MET:CE	2.37	0.55
1:B:313:THR:HG22	1:B:315:ILE:H	1.71	0.55
1:A:236:VAL:HG23	1:A:313:THR:HG22	1.90	0.54
1:B:259:PHE:O	1:B:279:SER:HB3	2.07	0.54
1:B:158:LYS:HZ3	1:B:164:GLY:HA2	1.73	0.54
1:A:256:HIS:HB2	1:A:283:LEU:HD11	1.91	0.53
1:B:133:LEU:HD11	1:B:155:TYR:CE2	2.44	0.52
1:B:87:ALA:HA	1:B:160:VAL:CG2	2.40	0.51
1:B:109:ASP:O	1:B:161:GLY:HA2	2.11	0.51
1:B:113:TYR:CG	1:B:164:GLY:HA3	2.46	0.51
1:B:84:TYR:HE1	1:B:151:LEU:HG	1.75	0.51
1:A:235:LEU:HD21	1:A:238:GLN:HB2	1.91	0.50
1:A:212:LEU:HD11	1:A:247:ALA:HB3	1.93	0.50
1:B:119:LEU:O	1:B:123:GLN:NE2	2.45	0.50
1:B:90:HIS:CB	1:B:160:VAL:HG11	2.42	0.50

Continued on next page...

Continued from previous page...

Atom-1	Atom-2	Interatomic distance (Å)	Clash overlap (Å)
1:A:34:PRO:HA	1:A:43:THR:OG1	2.11	0.50
1:B:78:PRO:HG2	1:A:180:ASP:OD2	2.12	0.49
1:B:130:PRO:HG2	1:B:133:LEU:HD13	1.93	0.49
1:B:190:CYS:SG	1:B:225:CYS:SG	3.11	0.49
1:B:99:VAL:HG21	1:B:286:ILE:HG21	1.94	0.49
1:A:185:VAL:HG12	1:A:236:VAL:CG1	2.43	0.49
1:A:281:GLU:HG2	1:A:282:THR:N	2.28	0.49
1:B:113:TYR:CD2	1:B:164:GLY:HA3	2.48	0.48
1:B:152:ILE:HG23	1:B:173:LEU:HD11	1.94	0.48
1:B:269:TYR:CD2	1:B:269:TYR:O	2.66	0.48
1:A:281:GLU:HG2	1:A:282:THR:HG23	1.96	0.48
1:A:256:HIS:HB2	1:A:283:LEU:CD1	2.44	0.47
1:B:177:ALA:HB3	1:B:179:LEU:HD21	1.96	0.47
1:A:139:ARG:HG3	1:A:139:ARG:HH21	1.77	0.47
1:A:4:ARG:C	1:A:24:MET:HE3	2.34	0.47
1:B:165:ASP:O	1:B:169:THR:HG22	2.14	0.47
1:A:152:ILE:HG22	1:A:173:LEU:HD21	1.96	0.47
1:A:125:GLU:HB3	1:A:241:PRO:HB2	1.97	0.47
1:A:186:LEU:HB2	1:A:198:THR:HG23	1.96	0.47
1:A:165:ASP:OD1	1:A:167:ARG:HG2	2.15	0.47
1:B:158:LYS:HZ2	1:B:164:GLY:HA2	1.79	0.46
1:B:167:ARG:HH21	1:B:168:GLU:HG3	1.80	0.46
1:B:125:GLU:HB3	1:B:241:PRO:HB2	1.97	0.46
1:B:157:ASN:OD1	1:A:203:VAL:HG12	2.16	0.46
1:B:186:LEU:CD2	1:B:235:LEU:HA	2.39	0.46
1:A:114:LEU:HD22	1:A:152:ILE:HD12	1.98	0.46
1:B:184:ARG:HB2	1:B:238:GLN:HE22	1.80	0.46
1:B:185:VAL:O	1:B:186:LEU:HD23	2.16	0.46
1:B:241:PRO:HA	1:B:308:GLU:O	2.15	0.45
1:A:283:LEU:HD12	1:A:283:LEU:N	2.31	0.45
1:A:27:THR:HG22	1:A:30:GLN:CD	2.37	0.45
1:A:269:TYR:O	1:A:269:TYR:CD2	2.70	0.45
1:B:84:TYR:CE1	1:B:151:LEU:HG	2.52	0.45
1:A:148:PHE:O	1:A:152:ILE:HG12	2.16	0.45
1:B:99:VAL:HG21	1:B:286:ILE:CG2	2.47	0.44
1:B:90:HIS:HB3	1:B:160:VAL:HG11	2.00	0.43
1:A:28:TYR:OH	1:A:51:HIS:ND1	2.37	0.43
1:A:36:TYR:HA	1:A:40:ALA:O	2.18	0.43
1:A:302:THR:HG21	3:A:402:GYX:C01	2.49	0.43
1:B:63:ASP:O	1:B:67:VAL:HG12	2.19	0.43
1:B:225:CYS:SG	1:B:227:CYS:SG	3.04	0.43

Continued on next page...

Continued from previous page...

Atom-1	Atom-2	Interatomic distance (Å)	Clash overlap (Å)
1:A:11:THR:O	1:A:57:TYR:HA	2.18	0.43
1:A:59:LEU:N	1:A:59:LEU:CD2	2.80	0.43
1:B:185:VAL:O	1:B:236:VAL:HG12	2.19	0.43
1:A:139:ARG:HG3	1:A:139:ARG:NH2	2.34	0.42
1:A:113:TYR:CD2	1:A:164:GLY:HA3	2.54	0.42
1:B:313:THR:CG2	1:B:314:THR:N	2.83	0.42
1:A:212:LEU:O	1:A:306:TYR:OH	2.28	0.42
1:B:167:ARG:HH21	1:B:168:GLU:CG	2.32	0.42
1:A:42:VAL:HB	1:A:45:ILE:CG2	2.50	0.42
1:B:123:GLN:HE21	1:B:123:GLN:HB2	1.24	0.42
1:A:14:ASN:HB2	1:A:57:TYR:OH	2.20	0.42
1:A:89:ASN:HA	1:A:92:LYS:HE2	2.02	0.41
1:B:252:TYR:O	1:B:298:LYS:HA	2.21	0.41
1:A:114:LEU:HD22	1:A:152:ILE:CD1	2.50	0.41
1:B:276:HIS:O	1:B:285:CYS:HA	2.21	0.41
1:A:184:ARG:HH22	1:A:243:VAL:HG13	1.86	0.41
1:A:149:CYS:O	1:A:152:ILE:HG13	2.20	0.41
1:B:100:ASN:ND2	1:B:284:TYR:CG	2.90	0.40
1:B:280:LYS:HB2	1:B:281:GLU:H	1.69	0.40
1:B:99:VAL:HG23	1:B:99:VAL:O	2.22	0.40
1:A:6:ILE:HD11	1:A:47:PRO:HB3	2.03	0.40
1:A:120:THR:HG21	1:A:305:PHE:CZ	2.57	0.40
1:A:264:GLU:CD	1:A:297:TYR:OH	2.60	0.40

There are no symmetry-related clashes.

5.3 Torsion angles [i](#)

5.3.1 Protein backbone [i](#)

In the following table, the Percentiles column shows the percent Ramachandran outliers of the chain as a percentile score with respect to all X-ray entries followed by that with respect to entries of similar resolution.

The Analysed column shows the number of residues for which the backbone conformation was analysed, and the total number of residues.

Mol	Chain	Analysed	Favoured	Allowed	Outliers	Percentiles	
1	A	313/315 (99%)	303 (97%)	10 (3%)	0	100	100
1	B	277/315 (88%)	269 (97%)	8 (3%)	0	100	100

Continued on next page...

Continued from previous page...

Mol	Chain	Analysed	Favoured	Allowed	Outliers	Percentiles	
All	All	590/630 (94%)	572 (97%)	18 (3%)	0	100	100

There are no Ramachandran outliers to report.

5.3.2 Protein sidechains ⓘ

In the following table, the Percentiles column shows the percent sidechain outliers of the chain as a percentile score with respect to all X-ray entries followed by that with respect to entries of similar resolution.

The Analysed column shows the number of residues for which the sidechain conformation was analysed, and the total number of residues.

Mol	Chain	Analysed	Rotameric	Outliers	Percentiles	
1	A	235/275 (86%)	234 (100%)	1 (0%)	91	96
1	B	175/275 (64%)	175 (100%)	0	100	100
All	All	410/550 (74%)	409 (100%)	1 (0%)	93	97

All (1) residues with a non-rotameric sidechain are listed below:

Mol	Chain	Res	Type
1	A	169	THR

Sometimes sidechains can be flipped to improve hydrogen bonding and reduce clashes. All (6) such sidechains are listed below:

Mol	Chain	Res	Type
1	B	89	ASN
1	B	100	ASN
1	B	134	GLN
1	B	238	GLN
1	A	14	ASN
1	A	89	ASN

5.3.3 RNA ⓘ

There are no RNA molecules in this entry.

5.4 Non-standard residues in protein, DNA, RNA chains [i](#)

There are no non-standard protein/DNA/RNA residues in this entry.

5.5 Carbohydrates [i](#)

There are no monosaccharides in this entry.

5.6 Ligand geometry [i](#)

Of 4 ligands modelled in this entry, 2 are monoatomic - leaving 2 for Mogul analysis.

In the following table, the Counts columns list the number of bonds (or angles) for which Mogul statistics could be retrieved, the number of bonds (or angles) that are observed in the model and the number of bonds (or angles) that are defined in the Chemical Component Dictionary. The Link column lists molecule types, if any, to which the group is linked. The Z score for a bond length (or angle) is the number of standard deviations the observed value is removed from the expected value. A bond length (or angle) with $|Z| > 2$ is considered an outlier worth inspection. RMSZ is the root-mean-square of all Z scores of the bond lengths (or angles).

Mol	Type	Chain	Res	Link	Bond lengths			Bond angles		
					Counts	RMSZ	$\# Z > 2$	Counts	RMSZ	$\# Z > 2$
3	GYX	B	402	-	35,35,35	2.78	12 (34%)	45,48,48	2.33	13 (28%)
3	GYX	A	402	-	35,35,35	2.69	9 (25%)	45,48,48	1.83	7 (15%)

In the following table, the Chirals column lists the number of chiral outliers, the number of chiral centers analysed, the number of these observed in the model and the number defined in the Chemical Component Dictionary. Similar counts are reported in the Torsion and Rings columns. '-' means no outliers of that kind were identified.

Mol	Type	Chain	Res	Link	Chirals	Torsions	Rings
3	GYX	B	402	-	-	7/21/31/31	0/4/4/4
3	GYX	A	402	-	-	2/21/31/31	0/4/4/4

All (21) bond length outliers are listed below:

Mol	Chain	Res	Type	Atoms	Z	Observed(Å)	Ideal(Å)
3	B	402	GYX	C02-N03	-8.22	1.28	1.48
3	A	402	GYX	C02-N03	-7.92	1.29	1.48
3	A	402	GYX	C23-C02	6.97	1.60	1.52
3	B	402	GYX	C23-C02	6.55	1.60	1.52
3	B	402	GYX	C16-N15	6.41	1.48	1.36
3	A	402	GYX	C07-N08	5.20	1.45	1.33

Continued on next page...

Continued from previous page...

Mol	Chain	Res	Type	Atoms	Z	Observed(Å)	Ideal(Å)
3	A	402	GYX	C16-N15	5.11	1.45	1.36
3	B	402	GYX	C07-N08	5.07	1.44	1.33
3	A	402	GYX	C01-C02	4.14	1.61	1.52
3	B	402	GYX	C01-C02	3.87	1.61	1.52
3	A	402	GYX	C21-C06	-3.86	1.43	1.53
3	B	402	GYX	C14-N15	3.54	1.48	1.41
3	B	402	GYX	C05-C06	-3.39	1.44	1.53
3	B	402	GYX	C21-C06	-3.33	1.44	1.53
3	B	402	GYX	C28-C27	-3.08	1.37	1.43
3	A	402	GYX	C05-C06	-3.07	1.45	1.53
3	A	402	GYX	C14-N15	2.75	1.47	1.41
3	A	402	GYX	C28-C27	-2.46	1.38	1.43
3	B	402	GYX	C22-N03	-2.22	1.42	1.47
3	B	402	GYX	O20-C07	-2.19	1.19	1.23
3	B	402	GYX	C04-N03	-2.13	1.43	1.47

All (20) bond angle outliers are listed below:

Mol	Chain	Res	Type	Atoms	Z	Observed(°)	Ideal(°)
3	A	402	GYX	C09-N08-C07	-6.48	113.01	122.34
3	B	402	GYX	C09-N08-C07	-6.27	113.31	122.34
3	A	402	GYX	C05-C06-C21	5.39	121.35	109.97
3	B	402	GYX	C04-C05-C06	5.17	119.02	110.41
3	B	402	GYX	C06-C07-N08	5.14	122.66	115.99
3	A	402	GYX	C04-C05-C06	4.55	117.97	110.41
3	B	402	GYX	C01-C02-C23	-4.51	104.95	114.21
3	B	402	GYX	C05-C06-C07	-4.23	101.39	110.69
3	B	402	GYX	C05-C06-C21	4.20	118.84	109.97
3	B	402	GYX	C21-C06-C07	-4.17	101.53	110.69
3	B	402	GYX	C22-C21-C06	3.91	116.92	110.41
3	B	402	GYX	C17-C16-N15	3.16	119.62	114.98
3	A	402	GYX	C06-C07-N08	2.83	119.66	115.99
3	B	402	GYX	O20-C07-C06	-2.41	118.98	122.12
3	A	402	GYX	C10-C09-N08	-2.28	108.17	113.05
3	A	402	GYX	C24-C23-C02	-2.26	118.00	120.88
3	B	402	GYX	O20-C07-N08	-2.18	118.32	122.99
3	B	402	GYX	C11-C10-C19	2.10	121.48	118.54
3	B	402	GYX	C04-N03-C22	2.07	112.86	109.08
3	A	402	GYX	O20-C07-C06	-2.01	119.50	122.12

There are no chirality outliers.

All (9) torsion outliers are listed below:

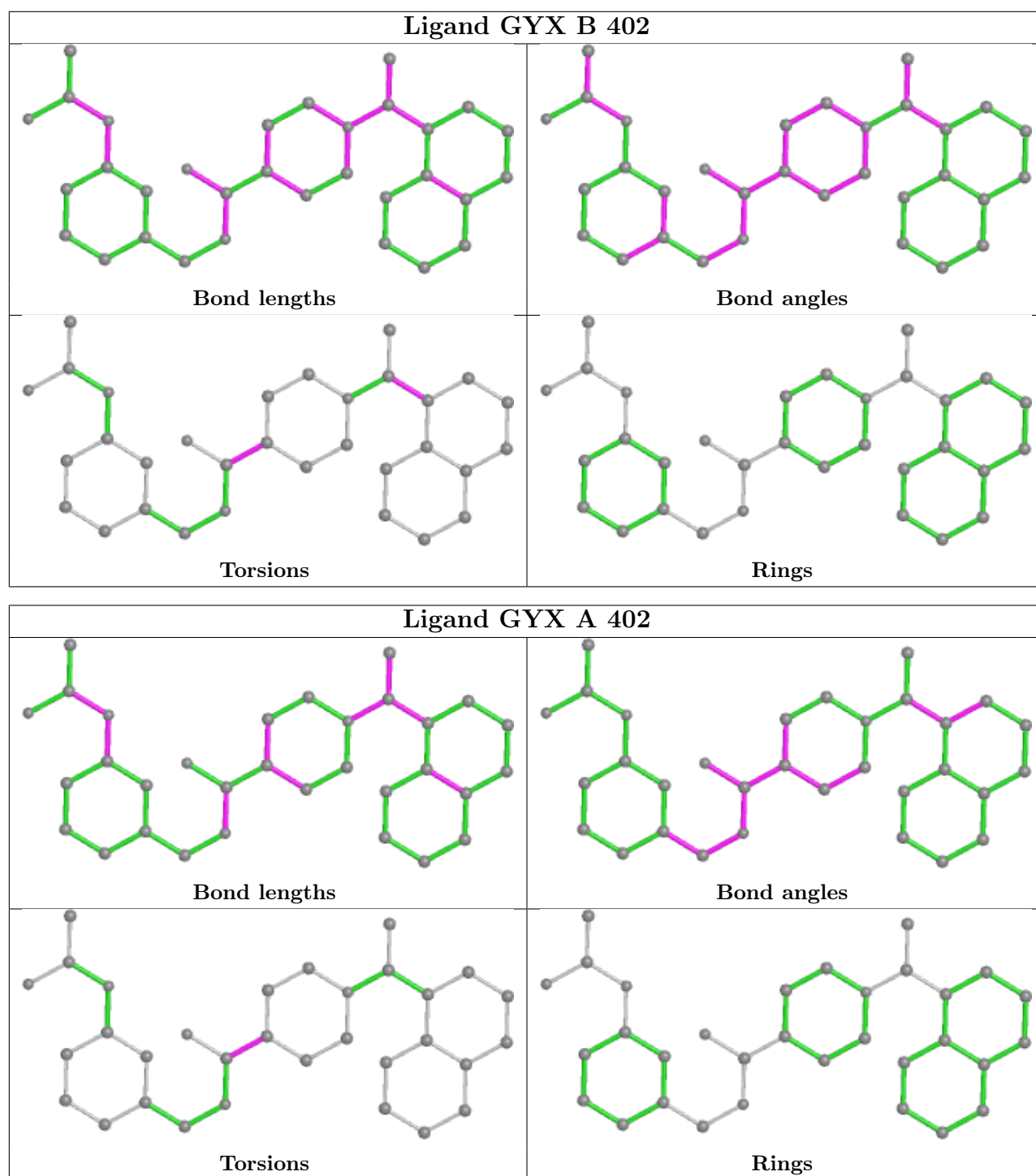
Mol	Chain	Res	Type	Atoms
3	B	402	GYX	C01-C02-C23-C24
3	B	402	GYX	C01-C02-C23-C28
3	B	402	GYX	N03-C02-C23-C24
3	B	402	GYX	N03-C02-C23-C28
3	A	402	GYX	C21-C06-C07-O20
3	B	402	GYX	C05-C06-C07-N08
3	B	402	GYX	C05-C06-C07-O20
3	A	402	GYX	C21-C06-C07-N08
3	B	402	GYX	C21-C06-C07-O20

There are no ring outliers.

1 monomer is involved in 2 short contacts:

Mol	Chain	Res	Type	Clashes	Symm-Clashes
3	A	402	GYX	2	0

The following is a two-dimensional graphical depiction of Mogul quality analysis of bond lengths, bond angles, torsion angles, and ring geometry for all instances of the Ligand of Interest. In addition, ligands with molecular weight > 250 and outliers as shown on the validation Tables will also be included. For torsion angles, if less than 5% of the Mogul distribution of torsion angles is within 10 degrees of the torsion angle in question, then that torsion angle is considered an outlier. Any bond that is central to one or more torsion angles identified as an outlier by Mogul will be highlighted in the graph. For rings, the root-mean-square deviation (RMSD) between the ring in question and similar rings identified by Mogul is calculated over all ring torsion angles. If the average RMSD is greater than 60 degrees and the minimal RMSD between the ring in question and any Mogul-identified rings is also greater than 60 degrees, then that ring is considered an outlier. The outliers are highlighted in purple. The color gray indicates Mogul did not find sufficient equivalents in the CSD to analyse the geometry.



5.7 Other polymers [i](#)

There are no such residues in this entry.

5.8 Polymer linkage issues [i](#)

There are no chain breaks in this entry.

6 Fit of model and data ⓘ

6.1 Protein, DNA and RNA chains ⓘ

In the following table, the column labelled ‘#RSRZ > 2’ contains the number (and percentage) of RSRZ outliers, followed by percent RSRZ outliers for the chain as percentile scores relative to all X-ray entries and entries of similar resolution. The OWAB column contains the minimum, median, 95th percentile and maximum values of the occupancy-weighted average B-factor per residue. The column labelled ‘Q < 0.9’ lists the number of (and percentage) of residues with an average occupancy less than 0.9.

Mol	Chain	Analysed	<RSRZ>	#RSRZ>2		OWAB(Å ²)	Q<0.9
1	A	315/315 (100%)	0.45	13 (4%)	37 36	14, 44, 109, 171	0
1	B	287/315 (91%)	1.28	76 (26%)	0 0	50, 99, 151, 190	0
All	All	602/630 (95%)	0.85	89 (14%)	2 2	14, 71, 143, 190	0

All (89) RSRZ outliers are listed below:

Mol	Chain	Res	Type	RSRZ
1	B	277	ILE	8.1
1	B	117	ALA	5.9
1	B	147	ASN	5.7
1	A	224	PRO	5.4
1	B	114	LEU	4.8
1	B	10	THR	4.7
1	B	272	GLY	4.6
1	B	86	SER	4.5
1	B	133	LEU	4.3
1	B	160	VAL	4.3
1	A	217	PHE	4.1
1	A	186	LEU	4.0
1	B	286	ILE	3.8
1	B	278	THR	3.8
1	B	115	ALA	3.7
1	B	304	VAL	3.7
1	B	94	TRP	3.6
1	A	191	LYS	3.6
1	A	230	GLN	3.5
1	B	34	PRO	3.5
1	B	126	LEU	3.5
1	B	242	PHE	3.5
1	B	119	LEU	3.5
1	B	303	ASP	3.5

Continued on next page...

Continued from previous page...

Mol	Chain	Res	Type	RSRZ
1	B	46	LYS	3.5
1	B	276	HIS	3.4
1	B	297	TYR	3.4
1	B	99	VAL	3.3
1	B	47	PRO	3.3
1	B	265	TYR	3.3
1	B	214	TYR	3.3
1	B	148	PHE	3.3
1	B	128	PHE	3.2
1	B	220	GLY	3.2
1	B	50	SER	3.1
1	B	102	LEU	3.1
1	B	138	TYR	3.1
1	B	51	HIS	3.1
1	B	311	TYR	3.0
1	B	44	LYS	3.0
1	B	54	LYS	3.0
1	B	252	TYR	2.9
1	B	43	THR	2.9
1	B	301	ILE	2.8
1	B	306	TYR	2.8
1	B	32	PHE	2.8
1	A	235	LEU	2.8
1	B	210	GLY	2.8
1	B	164	GLY	2.7
1	B	105	ILE	2.7
1	B	153	LEU	2.7
1	B	155	TYR	2.7
1	B	64	THR	2.7
1	A	208	TYR	2.6
1	B	84	TYR	2.6
1	B	19	THR	2.6
1	A	233	LYS	2.6
1	B	12	VAL	2.6
1	B	151	LEU	2.5
1	A	114	LEU	2.5
1	A	187	ASN	2.4
1	B	284	TYR	2.4
1	B	174	PHE	2.4
1	B	90	HIS	2.4
1	B	236	VAL	2.3
1	B	189	VAL	2.3

Continued on next page...

Continued from previous page...

Mol	Chain	Res	Type	RSRZ
1	B	61	ASN	2.3
1	B	48	HIS	2.3
1	B	101	GLY	2.3
1	B	186	LEU	2.3
1	B	96	TYR	2.3
1	B	40	ALA	2.2
1	B	274	TYR	2.2
1	B	223	ILE	2.2
1	B	259	PHE	2.2
1	B	13	ASP	2.2
1	B	305	PHE	2.2
1	B	224	PRO	2.1
1	B	290	LEU	2.1
1	A	194	GLY	2.1
1	B	262	ALA	2.1
1	B	37	LEU	2.1
1	B	275	LYS	2.1
1	B	73	TYR	2.1
1	B	15	ILE	2.0
1	A	223	ILE	2.0
1	B	260	THR	2.0
1	B	200	LEU	2.0
1	A	36	TYR	2.0

6.2 Non-standard residues in protein, DNA, RNA chains [i](#)

There are no non-standard protein/DNA/RNA residues in this entry.

6.3 Carbohydrates [i](#)

There are no monosaccharides in this entry.

6.4 Ligands [i](#)

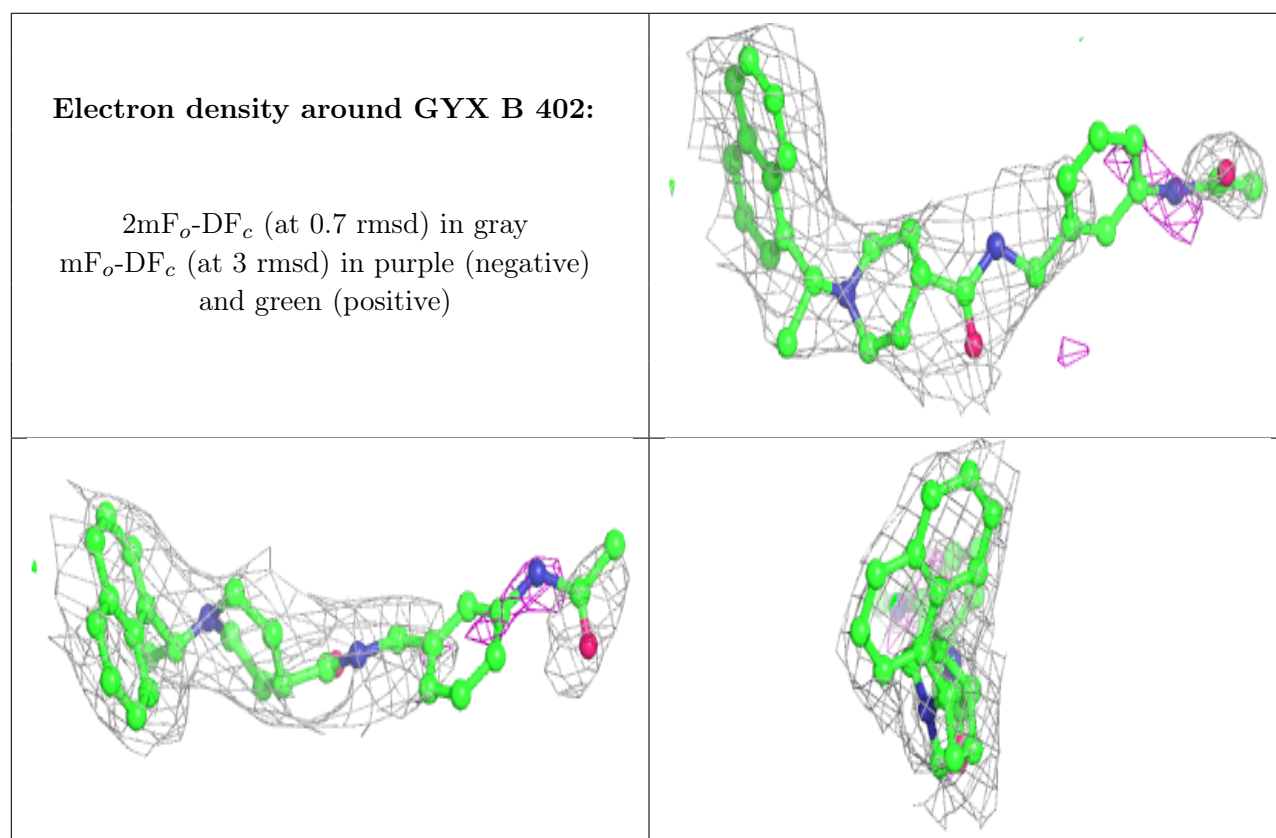
In the following table, the Atoms column lists the number of modelled atoms in the group and the number defined in the chemical component dictionary. The B-factors column lists the minimum, median, 95th percentile and maximum values of B factors of atoms in the group. The column labelled 'Q< 0.9' lists the number of atoms with occupancy less than 0.9.

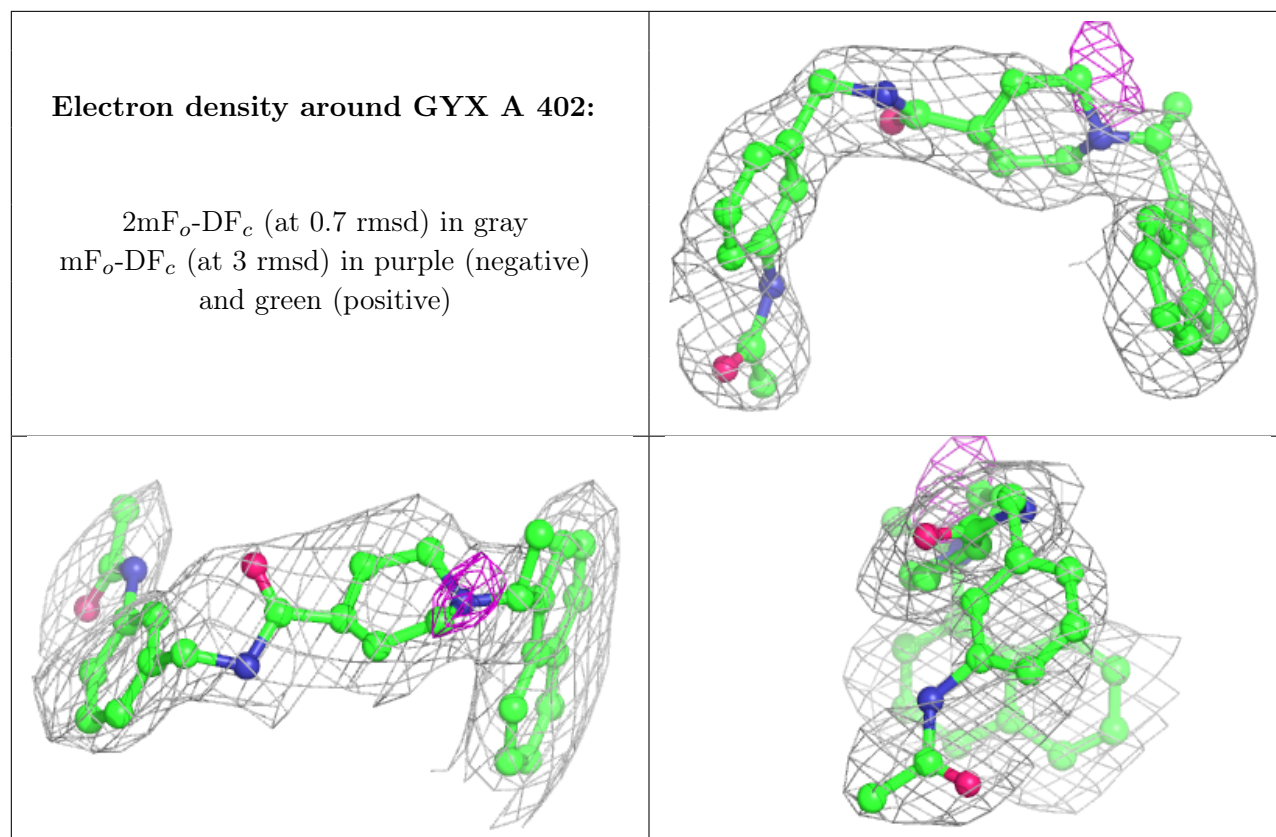
Continued on next page...

Continued from previous page...

Mol	Type	Chain	Res	Atoms	RSCC	RSR	B-factors(\AA^2)	Q<0.9
2	ZN	A	401	1/1	0.50	0.07	191,191,191,191	0
3	GYX	B	402	32/32	0.80	0.29	68,79,98,102	0
2	ZN	B	401	1/1	0.84	0.08	127,127,127,127	0
3	GYX	A	402	32/32	0.84	0.23	47,57,70,73	0

The following is a graphical depiction of the model fit to experimental electron density of all instances of the Ligand of Interest. In addition, ligands with molecular weight > 250 and outliers as shown on the geometry validation Tables will also be included. Each fit is shown from different orientation to approximate a three-dimensional view.





6.5 Other polymers [i](#)

There are no such residues in this entry.