



Full wwPDB X-ray Structure Validation Report ⓘ

Aug 7, 2020 – 09:22 PM BST

PDB ID : 1E4M
Title : MYROSINASE FROM SINAPIS ALBA
Authors : Burmeister, W.P.
Deposited on : 2000-07-10
Resolution : 1.20 Å(reported)

This is a Full wwPDB X-ray Structure Validation Report for a publicly released PDB entry.

We welcome your comments at validation@mail.wwpdb.org

A user guide is available at

<https://www.wwpdb.org/validation/2017/XrayValidationReportHelp>

with specific help available everywhere you see the ⓘ symbol.

The following versions of software and data (see [references ⓘ](#)) were used in the production of this report:

MolProbity : 4.02b-467
Mogul : 1.8.5 (274361), CSD as541be (2020)
Xtriage (Phenix) : 1.13
EDS : 2.13.1
Percentile statistics : 20191225.v01 (using entries in the PDB archive December 25th 2019)
Refmac : 5.8.0158
CCP4 : 7.0.044 (Gargrove)
Ideal geometry (proteins) : Engh & Huber (2001)
Ideal geometry (DNA, RNA) : Parkinson et al. (1996)
Validation Pipeline (wwPDB-VP) : 2.13.1

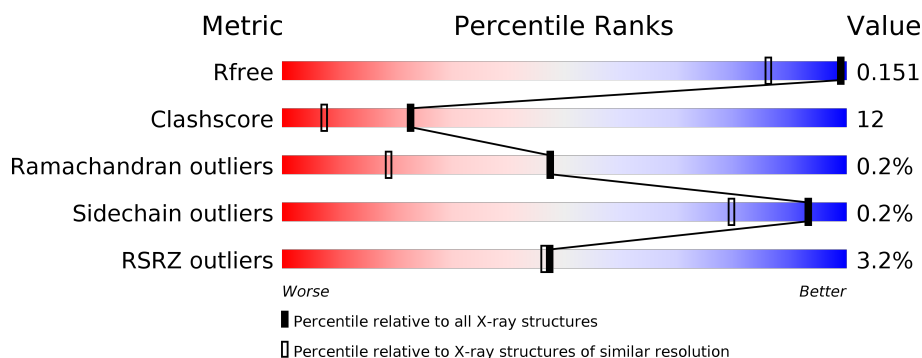
1 Overall quality at a glance

The following experimental techniques were used to determine the structure:

X-RAY DIFFRACTION

The reported resolution of this entry is 1.20 Å.

Percentile scores (ranging between 0-100) for global validation metrics of the entry are shown in the following graphic. The table shows the number of entries on which the scores are based.



Metric	Whole archive (#Entries)	Similar resolution (#Entries, resolution range(Å))
R_{free}	130704	1223 (1.22-1.18)
Clashscore	141614	1286 (1.22-1.18)
Ramachandran outliers	138981	1240 (1.22-1.18)
Sidechain outliers	138945	1239 (1.22-1.18)
RSRZ outliers	127900	1200 (1.22-1.18)

The table below summarises the geometric issues observed across the polymeric chains and their fit to the electron density. The red, orange, yellow and green segments on the lower bar indicate the fraction of residues that contain outliers for ≥ 3 , 2, 1 and 0 types of geometric quality criteria respectively. A grey segment represents the fraction of residues that are not modelled. The numeric value for each fraction is indicated below the corresponding segment, with a dot representing fractions $\leq 5\%$. The upper red bar (where present) indicates the fraction of residues that have poor fit to the electron density. The numeric value is given above the bar.

Mol	Chain	Length	Quality of chain
1	M	501	<div> <div>3%</div> <div> <div></div> <div>89%</div> <div>10%</div> </div> </div>
2	A	2	<div> <div>50%</div> <div>50%</div> </div>
3	B	5	<div> <div>80%</div> <div>20%</div> </div>
4	C	7	<div> <div>57%</div> <div>43%</div> </div>

The following table lists non-polymeric compounds, carbohydrate monomers and non-standard residues in protein, DNA, RNA chains that are outliers for geometric or electron-density-fit crite-

ria:

Mol	Type	Chain	Res	Chirality	Geometry	Clashes	Electron density
4	BMA	C	3	-	-	X	-
4	MAN	C	6	X	-	X	X
5	NAG	M	961	X	-	-	X
5	NAG	M	971	-	-	-	X
5	NAG	M	991	-	-	-	X
7	SO4	M	1505	-	-	X	-
7	SO4	M	1507	-	X	-	-
7	SO4	M	1510	-	X	X	-
8	GOL	M	1513	-	X	-	-

2 Entry composition [i](#)

There are 9 unique types of molecules in this entry. The entry contains 5201 atoms, of which 0 are hydrogens and 0 are deuteriums.

In the tables below, the ZeroOcc column contains the number of atoms modelled with zero occupancy, the AltConf column contains the number of residues with at least one atom in alternate conformation and the Trace column contains the number of residues modelled with at most 2 atoms.

- Molecule 1 is a protein called MYROSINASE MA1.

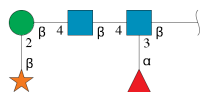
Mol	Chain	Residues	Atoms					ZeroOcc	AltConf	Trace
1	M	499	Total	C	N	O	S	0	21	0
			4082	2618	660	788	16			

- Molecule 2 is an oligosaccharide called 2-acetamido-2-deoxy-beta-D-glucopyranose-(1-4)-2-acetamido-2-deoxy-beta-D-glucopyranose.



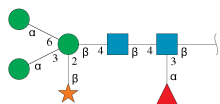
Mol	Chain	Residues	Atoms				ZeroOcc	AltConf	Trace
2	A	2	Total	C	N	O	0	0	0
			28	16	2	10			

- Molecule 3 is an oligosaccharide called beta-D-xylopyranose-(1-2)-beta-D-mannopyranose-(1-4)-2-acetamido-2-deoxy-beta-D-glucopyranose-(1-4)-[alpha-L-fucopyranose-(1-3)]2-acetamido-2-deoxy-beta-D-glucopyranose.



Mol	Chain	Residues	Atoms				ZeroOcc	AltConf	Trace
3	B	5	Total	C	N	O	0	0	0
			58	33	2	23			

- Molecule 4 is an oligosaccharide called beta-D-xylopyranose-(1-2)-[alpha-D-mannopyranose-(1-3)][alpha-D-mannopyranose-(1-6)]beta-D-mannopyranose-(1-4)-2-acetamido-2-deoxy-beta-D-glucopyranose-(1-4)-[alpha-L-fucopyranose-(1-3)]2-acetamido-2-deoxy-beta-D-glucopyranose.



Mol	Chain	Residues	Atoms				ZeroOcc	AltConf	Trace
4	C	7	Total	C	N	O	0	0	0
			80	45	2	33			

- Molecule 5 is 2-acetamido-2-deoxy-beta-D-glucopyranose (three-letter code: NAG) (formula: $C_8H_{15}NO_6$).



Mol	Chain	Residues	Atoms				ZeroOcc	AltConf
5	M	1	Total	C	N	O	0	0
			14	8	1	5		
5	M	1	Total	C	N	O	0	0
			14	8	1	5		
5	M	1	Total	C	N	O	0	0
			14	8	1	5		
5	M	1	Total	C	N	O	0	0
			14	8	1	5		
5	M	1	Total	C	N	O	0	0
			14	8	1	5		

- Molecule 6 is ZINC ION (three-letter code: ZN) (formula: Zn).

Mol	Chain	Residues	Atoms		ZeroOcc	AltConf
6	M	1	Total	Zn	0	0
			1	1		

- Molecule 7 is SULFATE ION (three-letter code: SO4) (formula: O₄S).



Mol	Chain	Residues	Atoms			ZeroOcc	AltConf
7	M	1	Total	O	S	0	0
			5	4	1		
7	M	1	Total	O	S	0	0
			5	4	1		
7	M	1	Total	O	S	0	0
			5	4	1		
7	M	1	Total	O	S	0	0
			5	4	1		
7	M	1	Total	O	S	0	0
			5	4	1		
7	M	1	Total	O	S	0	0
			5	4	1		
7	M	1	Total	O	S	0	0
			5	4	1		

- Molecule 8 is GLYCEROL (three-letter code: GOL) (formula: C₃H₈O₃).



Mol	Chain	Residues	Atoms			ZeroOcc	AltConf
8	M	1	Total	C	O	0	0
			6	3	3		
8	M	1	Total	C	O	0	1
			7	3	4		
8	M	1	Total	C	O	0	0
			6	3	3		
8	M	1	Total	C	O	0	0
			6	3	3		
8	M	1	Total	C	O	0	0
			6	3	3		

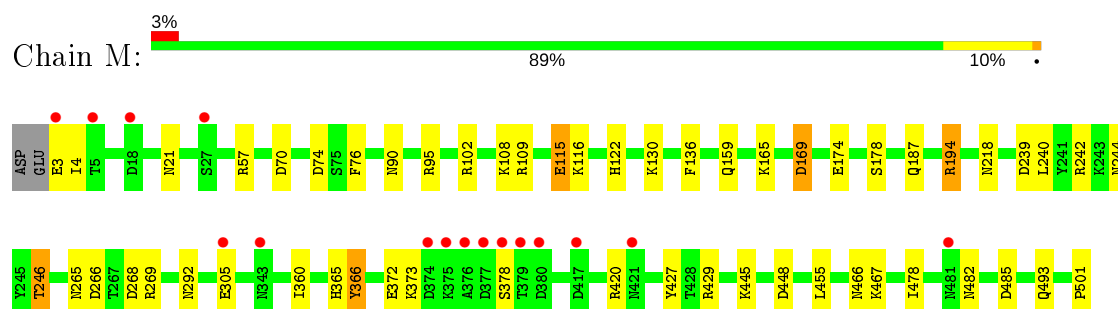
- Molecule 9 is water.

Mol	Chain	Residues	Atoms		ZeroOcc	AltConf
9	M	797	Total	O	0	0
			797	797		

3 Residue-property plots [i](#)

These plots are drawn for all protein, RNA, DNA and oligosaccharide chains in the entry. The first graphic for a chain summarises the proportions of the various outlier classes displayed in the second graphic. The second graphic shows the sequence view annotated by issues in geometry and electron density. Residues are color-coded according to the number of geometric quality criteria for which they contain at least one outlier: green = 0, yellow = 1, orange = 2 and red = 3 or more. A red dot above a residue indicates a poor fit to the electron density ($RSRZ > 2$). Stretches of 2 or more consecutive residues without any outlier are shown as a green connector. Residues present in the sample, but not in the model, are shown in grey.

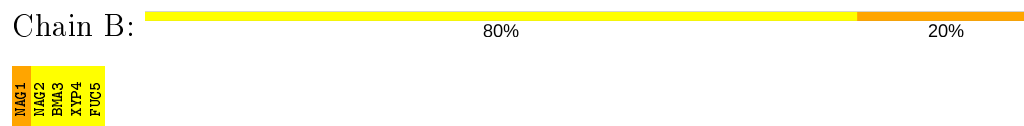
• Molecule 1: MYROSINASE MA1



• Molecule 2: 2-acetamido-2-deoxy-beta-D-glucopyranose-(1-4)-2-acetamido-2-deoxy-beta-D-glucopyranose



• Molecule 3: beta-D-xylopyranose-(1-2)-beta-D-mannopyranose-(1-4)-2-acetamido-2-deoxy-beta-D-glucopyranose-(1-4)-[alpha-L-fucopyranose-(1-3)]2-acetamido-2-deoxy-beta-D-glucopyranose



• Molecule 4: beta-D-xylopyranose-(1-2)-[alpha-D-mannopyranose-(1-3)][alpha-D-mannopyranose-(1-6)]beta-D-mannopyranose-(1-4)-2-acetamido-2-deoxy-beta-D-glucopyranose-(1-4)-[alpha-L-fucopyranose-(1-3)]2-acetamido-2-deoxy-beta-D-glucopyranose



4 Data and refinement statistics

Property	Value	Source
Space group	C 2 2 21	Depositor
Cell constants a, b, c, α , β , γ	135.30 Å 137.20 Å 80.60 Å 90.00° 90.00° 90.00°	Depositor
Resolution (Å)	10.00 – 1.20 9.99 – 1.20	Depositor EDS
% Data completeness (in resolution range)	99.6 (10.00-1.20) 96.1 (9.99-1.20)	Depositor EDS
R_{merge}	0.08	Depositor
R_{sym}	0.08	Depositor
$\langle I/\sigma(I) \rangle$ ¹	2.10 (at 1.20 Å)	Xtriage
Refinement program	REFMAC	Depositor
R, R_{free}	0.124 , 0.142 0.137 , 0.151	Depositor DCC
R_{free} test set	11150 reflections (5.01%)	wwPDB-VP
Wilson B-factor (Å ²)	8.1	Xtriage
Anisotropy	0.110	Xtriage
Bulk solvent k_{sol} (e/Å ³), B_{sol} (Å ²)	0.50 , 56.4	EDS
L-test for twinning ²	$\langle L \rangle = 0.51$, $\langle L^2 \rangle = 0.34$	Xtriage
Estimated twinning fraction	0.012 for -k,-h,-l	Xtriage
F_o, F_c correlation	0.97	EDS
Total number of atoms	5201	wwPDB-VP
Average B, all atoms (Å ²)	14.0	wwPDB-VP

Xtriage's analysis on translational NCS is as follows: *The largest off-origin peak in the Patterson function is 5.41% of the height of the origin peak. No significant pseudotranslation is detected.*

¹Intensities estimated from amplitudes.

²Theoretical values of $\langle |L| \rangle$, $\langle L^2 \rangle$ for acentric reflections are 0.5, 0.333 respectively for untwinned datasets, and 0.375, 0.2 for perfectly twinned datasets.

5 Model quality

5.1 Standard geometry

Bond lengths and bond angles in the following residue types are not validated in this section: XYP, GOL, ZN, BMA, NAG, SO4, MAN, FUC

The Z score for a bond length (or angle) is the number of standard deviations the observed value is removed from the expected value. A bond length (or angle) with $|Z| > 5$ is considered an outlier worth inspection. RMSZ is the root-mean-square of all Z scores of the bond lengths (or angles).

Mol	Chain	Bond lengths		Bond angles	
		RMSZ	$\# Z > 5$	RMSZ	$\# Z > 5$
1	M	0.77	2/4290 (0.0%)	1.16	31/5833 (0.5%)

All (2) bond length outliers are listed below:

Mol	Chain	Res	Type	Atoms	Z	Observed(Å)	Ideal(Å)
1	M	178	SER	CB-OG	6.28	1.50	1.42
1	M	501	PRO	N-CD	5.94	1.56	1.47

All (31) bond angle outliers are listed below:

Mol	Chain	Res	Type	Atoms	Z	Observed(°)	Ideal(°)
1	M	115	GLU	OE1-CD-OE2	-12.07	108.81	123.30
1	M	194	ARG	NE-CZ-NH2	-10.71	114.94	120.30
1	M	269	ARG	NE-CZ-NH1	9.32	124.96	120.30
1	M	109	ARG	NE-CZ-NH1	-9.27	115.67	120.30
1	M	268	ASP	CB-CG-OD1	8.34	125.80	118.30
1	M	242	ARG	NE-CZ-NH2	-8.13	116.23	120.30
1	M	266	ASP	CB-CG-OD2	-8.11	111.00	118.30
1	M	169[A]	ASP	CB-CG-OD2	-7.95	111.14	118.30
1	M	169[B]	ASP	CB-CG-OD2	-7.95	111.14	118.30
1	M	372	GLU	OE1-CD-OE2	-7.33	114.50	123.30
1	M	269	ARG	NE-CZ-NH2	-7.30	116.65	120.30
1	M	74	ASP	CB-CG-OD1	7.15	124.73	118.30
1	M	482	ASN	CB-CG-OD1	6.47	134.54	121.60
1	M	429	ARG	NE-CZ-NH1	6.16	123.38	120.30
1	M	482	ASN	CA-CB-CG	-6.04	100.12	113.40
1	M	420	ARG	CD-NE-CZ	5.87	131.82	123.60
1	M	109	ARG	NH1-CZ-NH2	5.73	125.70	119.40
1	M	246	THR	OG1-CB-CG2	-5.70	96.90	110.00
1	M	70	ASP	CB-CG-OD1	5.68	123.41	118.30

Continued on next page...

Continued from previous page...

Mol	Chain	Res	Type	Atoms	Z	Observed(°)	Ideal(°)
1	M	366[A]	TYR	CB-CG-CD2	-5.65	117.61	121.00
1	M	366[B]	TYR	CB-CG-CD2	-5.65	117.61	121.00
1	M	57	ARG	NE-CZ-NH2	-5.58	117.51	120.30
1	M	427	TYR	CG-CD1-CE1	-5.56	116.86	121.30
1	M	366[A]	TYR	CB-CG-CD1	5.30	124.18	121.00
1	M	366[B]	TYR	CB-CG-CD1	5.30	124.18	121.00
1	M	194	ARG	NE-CZ-NH1	5.23	122.91	120.30
1	M	76	PHE	CB-CG-CD1	-5.17	117.18	120.80
1	M	478	ILE	CB-CG1-CD1	5.14	128.28	113.90
1	M	102	ARG	NE-CZ-NH1	5.12	122.86	120.30
1	M	448	ASP	CB-CG-OD1	5.12	122.91	118.30
1	M	70	ASP	CB-CG-OD2	-5.07	113.74	118.30

There are no chirality outliers.

There are no planarity outliers.

5.2 Too-close contacts

In the following table, the Non-H and H(model) columns list the number of non-hydrogen atoms and hydrogen atoms in the chain respectively. The H(added) column lists the number of hydrogen atoms added and optimized by MolProbity. The Clashes column lists the number of clashes within the asymmetric unit, whereas Symm-Clashes lists symmetry related clashes.

Mol	Chain	Non-H	H(model)	H(added)	Clashes	Symm-Clashes
1	M	4082	0	3834	69	0
2	A	28	0	24	3	0
3	B	58	0	42	3	0
4	C	80	0	57	18	0
5	M	84	0	77	14	0
6	M	1	0	0	0	0
7	M	40	0	0	7	0
8	M	31	0	37	0	0
9	M	797	0	0	30	0
All	All	5201	0	4071	90	0

The all-atom clashscore is defined as the number of clashes found per 1000 atoms (including hydrogen atoms). The all-atom clashscore for this structure is 12.

All (90) close contacts within the same asymmetric unit are listed below, sorted by their clash magnitude.

Atom-1	Atom-2	Interatomic distance (Å)	Clash overlap (Å)
1:M:21:ASN:HD21	5:M:901:NAG:C1	0.93	1.57
1:M:244:ASN:HD21	5:M:931:NAG:C1	0.96	1.55
1:M:90:ASN:HD21	5:M:911:NAG:C1	0.90	1.52
1:M:360[B]:ILE:HD11	1:M:366[B]:TYR:CZ	1.53	1.41
1:M:360[B]:ILE:CD1	1:M:366[B]:TYR:CZ	2.13	1.31
1:M:360[B]:ILE:HD11	1:M:366[B]:TYR:OH	1.33	1.24
1:M:360[B]:ILE:CG1	1:M:366[B]:TYR:CE1	2.25	1.19
1:M:360[B]:ILE:HD11	1:M:366[B]:TYR:CE1	1.83	1.12
9:M:2748:HOH:O	4:C:6:MAN:H61	1.51	1.11
1:M:360[B]:ILE:CD1	1:M:366[B]:TYR:CE1	2.39	1.06
1:M:360[B]:ILE:HG12	1:M:366[B]:TYR:CD1	1.95	1.01
1:M:360[B]:ILE:HG12	1:M:366[B]:TYR:CE1	1.93	1.00
1:M:360[B]:ILE:CD1	1:M:366[B]:TYR:OH	2.09	0.97
1:M:467:LYS:HE3	9:M:2671:HOH:O	1.63	0.97
1:M:165:LYS:NZ	5:M:931:NAG:H82	1.80	0.96
1:M:246:THR:HG22	9:M:2392:HOH:O	1.64	0.96
4:C:3:BMA:H61	4:C:6:MAN:C6	1.98	0.93
9:M:2748:HOH:O	4:C:3:BMA:C4	2.17	0.91
4:C:3:BMA:H61	4:C:6:MAN:H61	1.55	0.88
7:M:1505:SO4:O2	7:M:1510:SO4:S	2.37	0.83
1:M:165:LYS:HZ1	5:M:931:NAG:H82	1.41	0.81
9:M:2748:HOH:O	4:C:3:BMA:C5	2.28	0.81
4:C:3:BMA:C6	4:C:6:MAN:H61	2.10	0.81
1:M:21:ASN:HD21	5:M:901:NAG:C2	1.92	0.79
4:C:3:BMA:C6	4:C:6:MAN:C6	2.61	0.77
4:C:3:BMA:H61	4:C:6:MAN:H62	1.67	0.75
1:M:130:LYS:HG3	9:M:2246:HOH:O	1.85	0.75
1:M:130:LYS:HB3	9:M:2262:HOH:O	1.86	0.74
7:M:1510:SO4:O1	9:M:2785:HOH:O	2.05	0.73
1:M:265:ASN:ND2	3:B:1:NAG:C2	2.52	0.73
1:M:360[B]:ILE:CG1	1:M:366[B]:TYR:CD1	2.65	0.72
1:M:360[B]:ILE:CG1	1:M:366[B]:TYR:CZ	2.64	0.71
1:M:130:LYS:HB3	9:M:2095:HOH:O	1.90	0.70
1:M:90:ASN:HD21	5:M:911:NAG:C2	1.97	0.70
1:M:265:ASN:CG	3:B:1:NAG:C1	2.59	0.69
1:M:218:ASN:ND2	2:A:1:NAG:C2	2.54	0.69
1:M:360[B]:ILE:HG13	1:M:366[B]:TYR:CE1	2.24	0.69
1:M:116:LYS:HG2	9:M:2224:HOH:O	1.94	0.68
1:M:4:ILE:HD11	1:M:445:LYS:HD2	1.77	0.67
1:M:485:ASP:HB2	9:M:2690:HOH:O	1.95	0.66
7:M:1505:SO4:S	7:M:1510:SO4:O3	2.55	0.65
1:M:360[B]:ILE:HD13	1:M:366[B]:TYR:CZ	2.25	0.65

Continued on next page...

Continued from previous page...

Atom-1	Atom-2	Interatomic distance (Å)	Clash overlap (Å)
1:M:115:GLU:HG3	9:M:2230:HOH:O	1.98	0.64
1:M:365:HIS:HD2	9:M:2249:HOH:O	1.79	0.64
1:M:466:ASN:HB2	9:M:2671:HOH:O	1.98	0.63
1:M:169[B]:ASP:HB2	1:M:240:LEU:HD21	1.81	0.63
1:M:493:GLN:NE2	9:M:2699:HOH:O	2.30	0.63
1:M:90:ASN:ND2	5:M:911:NAG:C2	2.57	0.63
1:M:239:ASP:OD1	9:M:2385:HOH:O	2.16	0.61
1:M:292:ASN:ND2	4:C:1:NAG:C2	2.58	0.61
1:M:360[B]:ILE:HG12	1:M:366[B]:TYR:CZ	2.32	0.59
1:M:365:HIS:HE1	9:M:2552:HOH:O	1.84	0.59
1:M:108:LYS:HD2	9:M:2316:HOH:O	2.02	0.58
1:M:165:LYS:HZ2	5:M:931:NAG:H82	1.68	0.58
7:M:1505:SO4:O1	7:M:1510:SO4:O3	2.22	0.57
9:M:2757:HOH:O	4:C:6:MAN:C5	2.53	0.56
1:M:292:ASN:ND2	4:C:1:NAG:O5	2.37	0.56
1:M:360[B]:ILE:HG12	1:M:366[B]:TYR:CG	2.40	0.55
4:C:3:BMA:O6	4:C:6:MAN:C6	2.49	0.55
1:M:218:ASN:CG	2:A:1:NAG:C1	2.66	0.55
9:M:2748:HOH:O	4:C:3:BMA:C6	2.53	0.55
1:M:292:ASN:CG	4:C:1:NAG:C1	2.68	0.54
1:M:4:ILE:HD11	1:M:445:LYS:CD	2.38	0.54
1:M:218:ASN:ND2	2:A:1:NAG:O5	2.37	0.53
1:M:159:GLN:NE2	9:M:2307:HOH:O	2.41	0.53
1:M:21:ASN:CG	5:M:901:NAG:C1	2.71	0.53
1:M:265:ASN:ND2	3:B:1:NAG:O5	2.37	0.53
1:M:466:ASN:CB	9:M:2671:HOH:O	2.57	0.52
7:M:1505:SO4:S	7:M:1510:SO4:S	3.07	0.52
1:M:21:ASN:ND2	5:M:901:NAG:C2	2.63	0.50
7:M:1505:SO4:O2	7:M:1510:SO4:O3	2.30	0.48
1:M:21:ASN:ND2	5:M:901:NAG:O5	2.42	0.48
1:M:115:GLU:CD	9:M:2230:HOH:O	2.52	0.48
1:M:373:LYS:NZ	1:M:378:SER:OG	2.45	0.48
1:M:90:ASN:CG	5:M:911:NAG:C1	2.73	0.47
1:M:95:ARG:HA	1:M:136:PHE:O	2.14	0.47
1:M:194:ARG:NH1	7:M:1510:SO4:O4	2.48	0.47
1:M:130:LYS:CB	9:M:2262:HOH:O	2.56	0.47
1:M:90:ASN:ND2	5:M:911:NAG:O5	2.39	0.45
1:M:4:ILE:CD1	1:M:445:LYS:HD2	2.47	0.44
1:M:95:ARG:HB2	1:M:455:LEU:HD13	2.00	0.44
4:C:3:BMA:C6	4:C:6:MAN:H62	2.41	0.43
9:M:2758:HOH:O	4:C:6:MAN:H62	2.19	0.43

Continued on next page...

Continued from previous page...

Atom-1	Atom-2	Interatomic distance (Å)	Clash overlap (Å)
1:M:122:HIS:HE1	1:M:174:GLU:O	2.01	0.42
1:M:115:GLU:CG	9:M:2230:HOH:O	2.62	0.42
1:M:360[A]:ILE:HG23	9:M:2539:HOH:O	2.18	0.42
1:M:360[A]:ILE:CG2	9:M:2539:HOH:O	2.67	0.42
9:M:2759:HOH:O	4:C:6:MAN:C6	2.66	0.42
9:M:2758:HOH:O	4:C:6:MAN:C6	2.68	0.41

There are no symmetry-related clashes.

5.3 Torsion angles [i](#)

5.3.1 Protein backbone [i](#)

In the following table, the Percentiles column shows the percent Ramachandran outliers of the chain as a percentile score with respect to all X-ray entries followed by that with respect to entries of similar resolution.

The Analysed column shows the number of residues for which the backbone conformation was analysed, and the total number of residues.

Mol	Chain	Analysed	Favoured	Allowed	Outliers	Percentiles
1	M	518/501 (103%)	505 (98%)	12 (2%)	1 (0%)	47 19

All (1) Ramachandran outliers are listed below:

Mol	Chain	Res	Type
1	M	187	GLN

5.3.2 Protein sidechains [i](#)

In the following table, the Percentiles column shows the percent sidechain outliers of the chain as a percentile score with respect to all X-ray entries followed by that with respect to entries of similar resolution.

The Analysed column shows the number of residues for which the sidechain conformation was analysed, and the total number of residues.

Mol	Chain	Analysed	Rotameric	Outliers	Percentiles
1	M	456/437 (104%)	455 (100%)	1 (0%)	93 79

All (1) residues with a non-rotameric sidechain are listed below:

Mol	Chain	Res	Type
1	M	3	GLU

Some sidechains can be flipped to improve hydrogen bonding and reduce clashes. All (4) such sidechains are listed below:

Mol	Chain	Res	Type
1	M	90	ASN
1	M	159	GLN
1	M	244	ASN
1	M	365	HIS

5.3.3 RNA ⓘ

There are no RNA molecules in this entry.

5.4 Non-standard residues in protein, DNA, RNA chains ⓘ

There are no non-standard protein/DNA/RNA residues in this entry.

5.5 Carbohydrates ⓘ

14 monosaccharides are modelled in this entry.

In the following table, the Counts columns list the number of bonds (or angles) for which Mogul statistics could be retrieved, the number of bonds (or angles) that are observed in the model and the number of bonds (or angles) that are defined in the Chemical Component Dictionary. The Link column lists molecule types, if any, to which the group is linked. The Z score for a bond length (or angle) is the number of standard deviations the observed value is removed from the expected value. A bond length (or angle) with $|Z| > 2$ is considered an outlier worth inspection. RMSZ is the root-mean-square of all Z scores of the bond lengths (or angles).

Mol	Type	Chain	Res	Link	Bond lengths			Bond angles		
					Counts	RMSZ	# Z > 2	Counts	RMSZ	# Z > 2
2	NAG	A	1	1,2	14,14,15	3.27	5 (35%)	17,19,21	3.37	8 (47%)
2	NAG	A	2	2	14,14,15	3.23	2 (14%)	17,19,21	5.32	7 (41%)
3	NAG	B	1	1,3	14,14,15	0.47	0	17,19,21	1.96	4 (23%)
3	NAG	B	2	3	14,14,15	1.00	1 (7%)	17,19,21	1.07	1 (5%)
3	BMA	B	3	3	11,11,12	1.74	2 (18%)	15,15,17	1.53	3 (20%)
3	XYP	B	4	3	9,9,10	0.94	0	10,12,14	2.25	4 (40%)

Mol	Type	Chain	Res	Link	Bond lengths			Bond angles		
					Counts	RMSZ	# Z > 2	Counts	RMSZ	# Z > 2
3	FUC	B	5	3	10,10,11	1.54	1 (10%)	14,14,16	1.93	4 (28%)
4	NAG	C	1	1,4	14,14,15	1.71	3 (21%)	17,19,21	2.57	4 (23%)
4	NAG	C	2	4	14,14,15	1.34	2 (14%)	17,19,21	1.57	3 (17%)
4	BMA	C	3	4	11,11,12	2.12	2 (18%)	15,15,17	4.87	9 (60%)
4	XYP	C	4	4	9,9,10	1.48	3 (33%)	10,12,14	1.84	4 (40%)
4	MAN	C	5	4	11,11,12	1.48	3 (27%)	15,15,17	2.34	7 (46%)
4	MAN	C	6	4	11,11,12	2.67	4 (36%)	15,15,17	6.53	11 (73%)
4	FUC	C	7	4	10,10,11	2.10	4 (40%)	14,14,16	1.54	1 (7%)

In the following table, the Chirals column lists the number of chiral outliers, the number of chiral centers analysed, the number of these observed in the model and the number defined in the Chemical Component Dictionary. Similar counts are reported in the Torsion and Rings columns. '-' means no outliers of that kind were identified.

Mol	Type	Chain	Res	Link	Chirals	Torsions	Rings
2	NAG	A	1	1,2	-	0/6/23/26	0/1/1/1
2	NAG	A	2	2	-	0/6/23/26	0/1/1/1
3	NAG	B	1	1,3	-	0/6/23/26	0/1/1/1
3	NAG	B	2	3	-	0/6/23/26	0/1/1/1
3	BMA	B	3	3	-	0/2/19/22	0/1/1/1
3	XYP	B	4	3	-	-	0/1/1/1
3	FUC	B	5	3	-	-	0/1/1/1
4	NAG	C	1	1,4	-	0/6/23/26	0/1/1/1
4	NAG	C	2	4	-	0/6/23/26	0/1/1/1
4	BMA	C	3	4	-	1/2/19/22	0/1/1/1
4	XYP	C	4	4	-	-	0/1/1/1
4	MAN	C	5	4	-	0/2/19/22	0/1/1/1
4	MAN	C	6	4	1/1/4/5	1/2/19/22	0/1/1/1
4	FUC	C	7	4	-	-	0/1/1/1

All (32) bond length outliers are listed below:

Mol	Chain	Res	Type	Atoms	Z	Observed(Å)	Ideal(Å)
2	A	2	NAG	C4-C5	9.31	1.72	1.53
2	A	1	NAG	O7-C7	-7.35	1.06	1.23
2	A	1	NAG	C4-C5	-7.21	1.37	1.53
2	A	2	NAG	C6-C5	6.72	1.74	1.51
4	C	6	MAN	O5-C5	6.01	1.55	1.43
4	C	3	BMA	C2-C3	-5.74	1.44	1.52
4	C	1	NAG	C1-C2	-4.31	1.45	1.52

Continued on next page...

Continued from previous page...

Mol	Chain	Res	Type	Atoms	Z	Observed(Å)	Ideal(Å)
4	C	6	MAN	C2-C3	4.19	1.58	1.52
2	A	1	NAG	C8-C7	4.11	1.59	1.50
3	B	3	BMA	C2-C3	-4.09	1.46	1.52
4	C	7	FUC	C2-C3	3.78	1.58	1.52
4	C	6	MAN	C1-C2	3.37	1.59	1.52
4	C	5	MAN	O5-C5	3.33	1.50	1.43
4	C	7	FUC	C4-C5	3.32	1.60	1.52
4	C	2	NAG	C3-C2	-2.96	1.46	1.52
2	A	1	NAG	C3-C2	2.95	1.58	1.52
4	C	3	BMA	C4-C5	2.94	1.59	1.53
3	B	5	FUC	C2-C3	2.84	1.56	1.52
4	C	7	FUC	O4-C4	2.55	1.49	1.43
4	C	7	FUC	C1-C2	2.50	1.57	1.52
4	C	1	NAG	C2-N2	-2.48	1.42	1.46
4	C	5	MAN	C4-C5	2.48	1.58	1.53
4	C	1	NAG	O5-C1	-2.46	1.39	1.43
2	A	1	NAG	C6-C5	2.46	1.60	1.51
3	B	2	NAG	C1-C2	2.41	1.55	1.52
4	C	4	XYP	C2-C3	2.36	1.56	1.52
3	B	3	BMA	C4-C5	2.36	1.58	1.53
4	C	6	MAN	O5-C1	2.34	1.47	1.43
4	C	2	NAG	C1-C2	2.29	1.55	1.52
4	C	4	XYP	O3-C3	2.23	1.48	1.43
4	C	4	XYP	O5-C5	2.13	1.47	1.42
4	C	5	MAN	C4-C3	2.01	1.57	1.52

All (70) bond angle outliers are listed below:

Mol	Chain	Res	Type	Atoms	Z	Observed(°)	Ideal(°)
4	C	6	MAN	C1-O5-C5	-13.79	93.51	112.19
2	A	2	NAG	C1-O5-C5	-13.44	93.98	112.19
4	C	6	MAN	C6-C5-C4	12.67	142.68	113.00
2	A	2	NAG	C6-C5-C4	-9.90	89.81	113.00
4	C	3	BMA	O4-C4-C5	9.43	132.72	109.30
2	A	2	NAG	O5-C5-C6	-9.12	92.91	107.20
4	C	6	MAN	O5-C5-C6	-9.04	93.03	107.20
4	C	6	MAN	O4-C4-C5	8.73	130.98	109.30
2	A	1	NAG	C1-O5-C5	-8.71	100.39	112.19
4	C	3	BMA	O5-C5-C6	-8.47	93.92	107.20
2	A	2	NAG	O5-C5-C4	-8.45	90.27	110.83
4	C	3	BMA	O4-C4-C3	-7.31	93.46	110.35
4	C	3	BMA	C6-C5-C4	6.73	128.78	113.00

Continued on next page...

Continued from previous page...

Mol	Chain	Res	Type	Atoms	Z	Observed(°)	Ideal(°)
4	C	1	NAG	C1-O5-C5	-6.27	103.70	112.19
4	C	1	NAG	O5-C1-C2	6.23	121.13	111.29
2	A	1	NAG	C2-N2-C7	-6.02	114.33	122.90
3	B	1	NAG	C1-O5-C5	-5.65	104.54	112.19
4	C	6	MAN	O5-C5-C4	5.52	124.26	110.83
4	C	6	MAN	O5-C1-C2	-5.22	102.71	110.77
2	A	1	NAG	C8-C7-N2	-5.14	107.39	116.10
4	C	3	BMA	C3-C4-C5	5.10	119.33	110.24
2	A	2	NAG	O5-C1-C2	4.99	119.16	111.29
4	C	6	MAN	C2-C3-C4	-4.93	102.36	110.89
4	C	3	BMA	C1-C2-C3	-4.87	103.68	109.67
4	C	6	MAN	O4-C4-C3	-4.60	99.71	110.35
3	B	5	FUC	O3-C3-C2	-4.58	101.23	109.99
4	C	3	BMA	O5-C5-C4	-4.57	99.72	110.83
4	C	7	FUC	C1-C2-C3	-4.51	104.12	109.67
4	C	5	MAN	C1-C2-C3	4.39	115.06	109.67
3	B	4	XYP	O2-C2-C3	-4.18	101.76	110.14
4	C	5	MAN	O5-C5-C6	-3.77	101.30	107.20
4	C	3	BMA	O2-C2-C3	-3.72	102.68	110.14
3	B	4	XYP	C1-C2-C3	3.66	114.17	109.67
4	C	6	MAN	O6-C6-C5	3.61	123.67	111.29
4	C	4	XYP	C5-C4-C3	-3.58	105.27	109.67
3	B	5	FUC	C1-C2-C3	-3.56	105.29	109.67
4	C	1	NAG	O5-C5-C6	-3.34	101.96	107.20
3	B	4	XYP	C5-C4-C3	-3.34	105.56	109.67
4	C	5	MAN	C2-C3-C4	-3.33	105.14	110.89
2	A	1	NAG	C4-C3-C2	-3.26	106.24	111.02
2	A	1	NAG	O7-C7-N2	3.13	127.70	121.95
4	C	5	MAN	C3-C4-C5	-3.02	104.84	110.24
4	C	5	MAN	O2-C2-C3	-3.02	104.09	110.14
3	B	3	BMA	O5-C5-C6	-3.00	102.51	107.20
3	B	5	FUC	O2-C2-C3	-2.97	104.20	110.14
3	B	1	NAG	C2-N2-C7	-2.88	118.80	122.90
2	A	1	NAG	O5-C5-C6	-2.78	102.85	107.20
4	C	2	NAG	O4-C4-C3	-2.72	104.06	110.35
4	C	4	XYP	C4-C3-C2	-2.64	107.79	110.92
4	C	6	MAN	O2-C2-C1	-2.63	103.77	109.15
4	C	3	BMA	C1-O5-C5	-2.63	108.63	112.19
4	C	5	MAN	O2-C2-C1	2.53	114.34	109.15
3	B	3	BMA	C2-C3-C4	2.53	115.27	110.89
2	A	2	NAG	C4-C3-C2	-2.53	107.31	111.02
4	C	2	NAG	C2-N2-C7	-2.44	119.42	122.90

Continued on next page...

Continued from previous page...

Mol	Chain	Res	Type	Atoms	Z	Observed(°)	Ideal(°)
4	C	4	XYP	O4-C4-C3	-2.42	105.29	110.14
3	B	4	XYP	O3-C3-C2	-2.37	105.46	109.99
3	B	2	NAG	C2-N2-C7	-2.33	119.58	122.90
4	C	2	NAG	O5-C1-C2	-2.30	107.66	111.29
2	A	1	NAG	O4-C4-C5	-2.19	103.85	109.30
3	B	3	BMA	O3-C3-C4	2.19	115.41	110.35
3	B	1	NAG	C1-C2-N2	-2.18	106.76	110.49
4	C	1	NAG	O3-C3-C2	-2.17	104.98	109.47
2	A	1	NAG	O4-C4-C3	-2.16	105.35	110.35
2	A	2	NAG	O6-C6-C5	-2.13	103.99	111.29
4	C	5	MAN	C6-C5-C4	-2.12	108.03	113.00
3	B	5	FUC	O3-C3-C4	-2.10	105.48	110.35
4	C	4	XYP	O2-C2-C3	-2.07	105.99	110.14
3	B	1	NAG	C8-C7-N2	-2.06	112.61	116.10
4	C	6	MAN	C1-C2-C3	2.04	112.18	109.67

All (1) chirality outliers are listed below:

Mol	Chain	Res	Type	Atom
4	C	6	MAN	C5

All (2) torsion outliers are listed below:

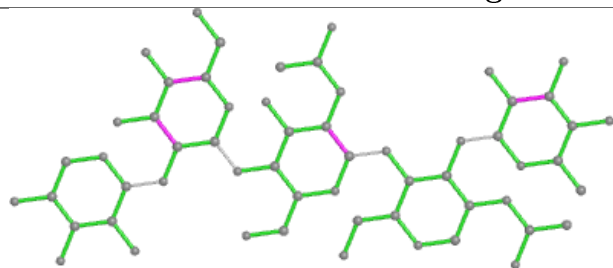
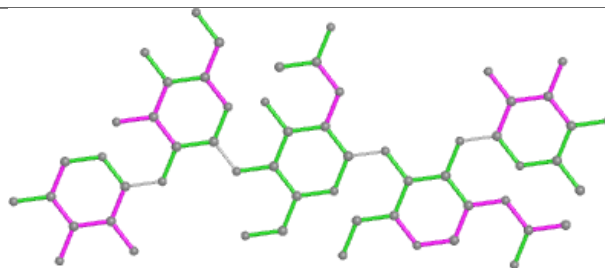
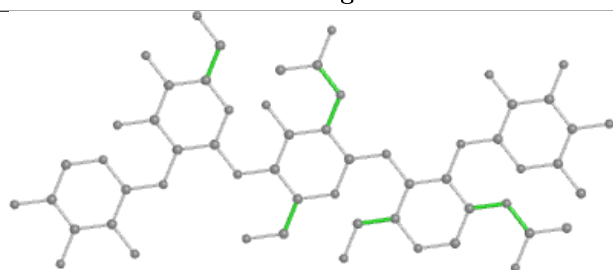
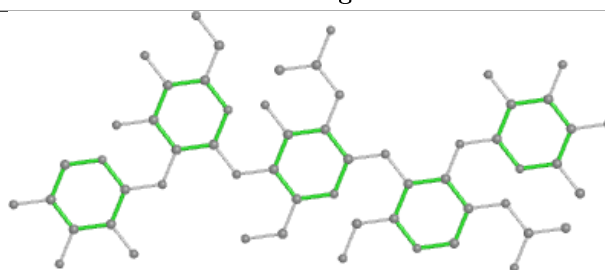
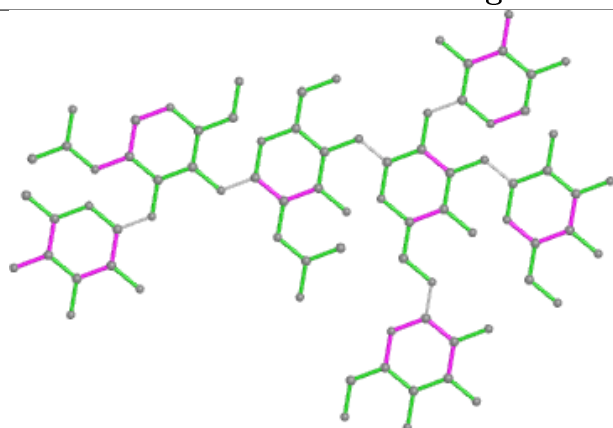
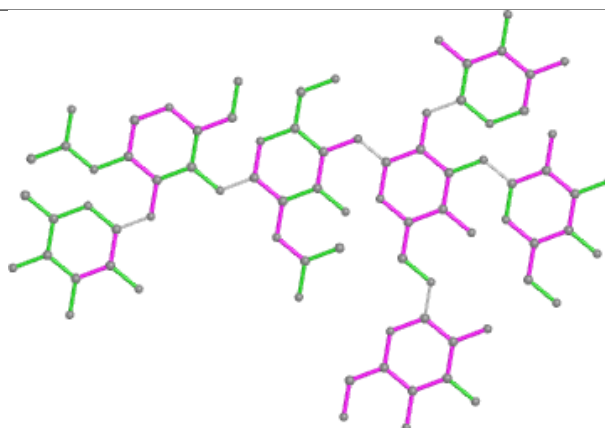
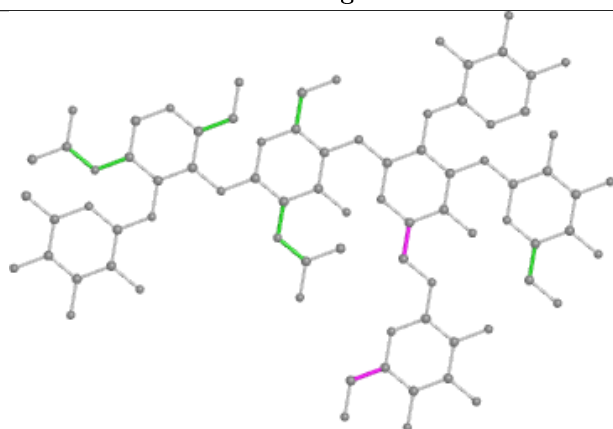
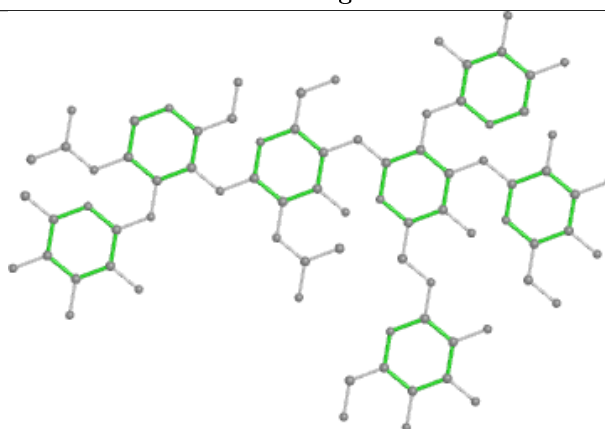
Mol	Chain	Res	Type	Atoms
4	C	6	MAN	O5-C5-C6-O6
4	C	3	BMA	C4-C5-C6-O6

There are no ring outliers.

5 monomers are involved in 24 short contacts:

Mol	Chain	Res	Type	Clashes	Symm-Clashes
2	A	1	NAG	3	0
3	B	1	NAG	3	0
4	C	3	BMA	10	0
4	C	6	MAN	12	0
4	C	1	NAG	3	0

The following is a two-dimensional graphical depiction of Mogul quality analysis of bond lengths, bond angles, torsion angles, and ring geometry for oligosaccharide.

Oligosaccharide Chain B**Bond lengths****Bond angles****Torsions****Rings****Oligosaccharide Chain C****Bond lengths****Bond angles****Torsions****Rings**

5.6 Ligand geometry

Of 21 ligands modelled in this entry, 1 is monoatomic - leaving 20 for Mogul analysis.

In the following table, the Counts columns list the number of bonds (or angles) for which Mogul statistics could be retrieved, the number of bonds (or angles) that are observed in the model and the number of bonds (or angles) that are defined in the Chemical Component Dictionary. The Link column lists molecule types, if any, to which the group is linked. The Z score for a bond length (or angle) is the number of standard deviations the observed value is removed from the expected value. A bond length (or angle) with $|Z| > 2$ is considered an outlier worth inspection. RMSZ is the root-mean-square of all Z scores of the bond lengths (or angles).

Mol	Type	Chain	Res	Link	Bond lengths			Bond angles		
					Counts	RMSZ	# Z > 2	Counts	RMSZ	# Z > 2
7	SO4	M	1505	7	4,4,4	1.08	1 (25%)	6,6,6	1.30	1 (16%)
5	NAG	M	931	1	14,14,15	1.91	5 (35%)	17,19,21	8.60	9 (52%)
7	SO4	M	1507	-	4,4,4	1.59	1 (25%)	6,6,6	2.16	3 (50%)
5	NAG	M	901	1	14,14,15	1.14	1 (7%)	17,19,21	2.14	4 (23%)
5	NAG	M	991	1	14,14,15	1.26	1 (7%)	17,19,21	1.91	4 (23%)
8	GOL	M	1512[A]	-	5,5,5	1.04	0	5,5,5	0.99	0
8	GOL	M	1513	-	5,5,5	2.59	2 (40%)	5,5,5	1.74	2 (40%)
7	SO4	M	1503	-	4,4,4	0.72	0	6,6,6	1.15	0
5	NAG	M	911	1	14,14,15	1.27	1 (7%)	17,19,21	2.06	4 (23%)
7	SO4	M	1506	-	4,4,4	0.25	0	6,6,6	0.30	0
7	SO4	M	1508	-	4,4,4	0.87	0	6,6,6	1.05	0
7	SO4	M	1510	7	4,4,4	1.23	1 (25%)	6,6,6	2.56	4 (66%)
8	GOL	M	1511	-	5,5,5	0.46	0	5,5,5	0.73	0
5	NAG	M	971	1	14,14,15	1.33	1 (7%)	17,19,21	2.04	6 (35%)
7	SO4	M	1504	-	4,4,4	0.52	0	6,6,6	0.43	0
8	GOL	M	1512[B]	-	5,5,5	0.96	0	5,5,5	2.70	1 (20%)
5	NAG	M	961	1	14,14,15	1.40	2 (14%)	17,19,21	2.47	5 (29%)
8	GOL	M	1515	-	5,5,5	0.61	0	5,5,5	1.12	1 (20%)
7	SO4	M	1509	-	4,4,4	0.67	0	6,6,6	0.24	0
8	GOL	M	1514	-	5,5,5	0.34	0	5,5,5	0.88	0

In the following table, the Chirals column lists the number of chiral outliers, the number of chiral centers analysed, the number of these observed in the model and the number defined in the Chemical Component Dictionary. Similar counts are reported in the Torsion and Rings columns. '-' means no outliers of that kind were identified.

Mol	Type	Chain	Res	Link	Chirals	Torsions	Rings
8	GOL	M	1515	-	-	0/4/4/4	-
5	NAG	M	931	1	-	2/6/23/26	0/1/1/1

Continued on next page...

Continued from previous page...

Mol	Type	Chain	Res	Link	Chirals	Torsions	Rings
8	GOL	M	1514	-	-	0/4/4/4	-
5	NAG	M	901	1	-	0/6/23/26	0/1/1/1
5	NAG	M	991	1	-	0/6/23/26	0/1/1/1
8	GOL	M	1513	-	-	3/4/4/4	-
5	NAG	M	911	1	-	0/6/23/26	0/1/1/1
8	GOL	M	1511	-	-	4/4/4/4	-
5	NAG	M	971	1	-	4/6/23/26	0/1/1/1
8	GOL	M	1512[B]	-	-	2/4/4/4	-
5	NAG	M	961	1	1/1/5/7	0/6/23/26	0/1/1/1
8	GOL	M	1512[A]	-	-	0/4/4/4	-

All (16) bond length outliers are listed below:

Mol	Chain	Res	Type	Atoms	Z	Observed(Å)	Ideal(Å)
5	M	931	NAG	O7-C7	-4.19	1.13	1.23
8	M	1513	GOL	O1-C1	4.01	1.59	1.42
5	M	971	NAG	O7-C7	-3.96	1.14	1.23
5	M	991	NAG	O7-C7	-3.74	1.14	1.23
5	M	911	NAG	O7-C7	-3.65	1.15	1.23
5	M	961	NAG	O7-C7	-3.61	1.15	1.23
8	M	1513	GOL	C1-C2	3.52	1.66	1.51
5	M	931	NAG	C2-N2	-3.43	1.40	1.46
5	M	901	NAG	O7-C7	-3.32	1.15	1.23
7	M	1507	SO4	O2-S	2.98	1.62	1.46
5	M	931	NAG	C1-C2	-2.21	1.49	1.52
7	M	1510	SO4	O1-S	2.16	1.57	1.46
5	M	931	NAG	O5-C1	-2.16	1.40	1.43
5	M	961	NAG	C2-N2	2.10	1.49	1.46
7	M	1505	SO4	O1-S	2.08	1.57	1.46
5	M	931	NAG	O4-C4	2.00	1.47	1.43

All (44) bond angle outliers are listed below:

Mol	Chain	Res	Type	Atoms	Z	Observed(°)	Ideal(°)
5	M	931	NAG	C2-N2-C7	27.98	162.74	122.90
5	M	931	NAG	O5-C1-C2	12.68	131.30	111.29
5	M	931	NAG	C8-C7-N2	11.36	135.34	116.10
5	M	931	NAG	O7-C7-N2	-9.25	104.95	121.95
5	M	961	NAG	C1-O5-C5	7.68	122.59	112.19
5	M	901	NAG	C1-O5-C5	-6.39	103.54	112.19
5	M	911	NAG	C1-O5-C5	-6.28	103.69	112.19

Continued on next page...

Continued from previous page...

Mol	Chain	Res	Type	Atoms	Z	Observed(°)	Ideal(°)
5	M	931	NAG	C1-O5-C5	-6.26	103.71	112.19
8	M	1512[B]	GOL	O1-C1-C2	5.64	137.24	110.20
5	M	971	NAG	O5-C1-C2	-4.87	103.59	111.29
5	M	931	NAG	C3-C4-C5	4.84	118.88	110.24
5	M	991	NAG	O5-C1-C2	4.62	118.58	111.29
5	M	991	NAG	C4-C3-C2	-4.21	104.85	111.02
7	M	1510	SO4	O4-S-O3	4.20	127.00	109.06
5	M	971	NAG	C1-O5-C5	3.98	117.58	112.19
5	M	901	NAG	O5-C1-C2	3.88	117.41	111.29
5	M	961	NAG	O3-C3-C2	-3.72	101.77	109.47
5	M	911	NAG	C4-C3-C2	-3.67	105.64	111.02
5	M	991	NAG	O3-C3-C2	-3.19	102.86	109.47
5	M	961	NAG	C1-C2-N2	-3.14	105.12	110.49
7	M	1510	SO4	O3-S-O1	-2.94	93.94	109.31
5	M	931	NAG	O5-C5-C6	-2.94	102.60	107.20
8	M	1513	GOL	O2-C2-C1	2.92	122.00	109.12
7	M	1507	SO4	O3-S-O2	-2.84	94.48	109.31
5	M	931	NAG	C4-C3-C2	-2.78	106.95	111.02
5	M	931	NAG	O4-C4-C5	-2.62	102.80	109.30
7	M	1507	SO4	O2-S-O1	-2.62	90.12	109.43
5	M	971	NAG	O5-C5-C4	-2.60	104.49	110.83
7	M	1505	SO4	O4-S-O3	2.60	120.14	109.06
5	M	901	NAG	O5-C5-C4	-2.59	104.53	110.83
5	M	961	NAG	O5-C1-C2	2.58	115.37	111.29
5	M	971	NAG	O5-C5-C6	-2.48	103.31	107.20
7	M	1510	SO4	O2-S-O1	-2.47	91.16	109.43
5	M	901	NAG	C4-C3-C2	-2.46	107.42	111.02
8	M	1513	GOL	O3-C3-C2	2.37	121.54	110.20
5	M	911	NAG	O5-C5-C4	-2.34	105.12	110.83
8	M	1515	GOL	C3-C2-C1	-2.29	102.80	111.70
5	M	961	NAG	O4-C4-C5	-2.24	103.73	109.30
7	M	1510	SO4	O3-S-O2	2.19	120.73	109.31
7	M	1507	SO4	O4-S-O3	2.14	118.18	109.06
5	M	911	NAG	O3-C3-C2	-2.08	105.17	109.47
5	M	971	NAG	O4-C4-C3	2.04	115.06	110.35
5	M	971	NAG	O3-C3-C2	-2.02	105.29	109.47
5	M	991	NAG	O5-C5-C4	-2.01	105.93	110.83

All (1) chirality outliers are listed below:

Mol	Chain	Res	Type	Atom
5	M	961	NAG	C1

All (15) torsion outliers are listed below:

Mol	Chain	Res	Type	Atoms
5	M	931	NAG	C8-C7-N2-C2
5	M	931	NAG	O7-C7-N2-C2
8	M	1513	GOL	O1-C1-C2-C3
8	M	1511	GOL	O1-C1-C2-O2
8	M	1511	GOL	O1-C1-C2-C3
5	M	971	NAG	O5-C5-C6-O6
5	M	971	NAG	C4-C5-C6-O6
8	M	1513	GOL	C1-C2-C3-O3
8	M	1511	GOL	C1-C2-C3-O3
8	M	1513	GOL	O1-C1-C2-O2
8	M	1511	GOL	O2-C2-C3-O3
8	M	1512[B]	GOL	O1-C1-C2-O2
5	M	971	NAG	C8-C7-N2-C2
5	M	971	NAG	O7-C7-N2-C2
8	M	1512[B]	GOL	O1-C1-C2-C3

There are no ring outliers.

5 monomers are involved in 21 short contacts:

Mol	Chain	Res	Type	Clashes	Symm-Clashes
7	M	1505	SO4	5	0
5	M	931	NAG	4	0
5	M	901	NAG	5	0
5	M	911	NAG	5	0
7	M	1510	SO4	7	0

5.7 Other polymers [i](#)

There are no such residues in this entry.

5.8 Polymer linkage issues [i](#)

There are no chain breaks in this entry.

6 Fit of model and data [i](#)

6.1 Protein, DNA and RNA chains [i](#)

In the following table, the column labelled ‘#RSRZ> 2’ contains the number (and percentage) of RSRZ outliers, followed by percent RSRZ outliers for the chain as percentile scores relative to all X-ray entries and entries of similar resolution. The OWAB column contains the minimum, median, 95th percentile and maximum values of the occupancy-weighted average B-factor per residue. The column labelled ‘Q< 0.9’ lists the number of (and percentage) of residues with an average occupancy less than 0.9.

Mol	Chain	Analysed	<RSRZ>	#RSRZ>2		OWAB(Å ²)	Q<0.9
1	M	499/501 (99%)	-0.17	16 (3%)	47 46	5, 9, 22, 46	0

All (16) RSRZ outliers are listed below:

Mol	Chain	Res	Type	RSRZ
1	M	376	ALA	9.1
1	M	417	ASP	4.6
1	M	3	GLU	4.5
1	M	380	ASP	4.4
1	M	375	LYS	4.3
1	M	374	ASP	2.9
1	M	377	ASP	2.7
1	M	481	ASN	2.6
1	M	18	ASP	2.6
1	M	343	ASN	2.3
1	M	27	SER	2.3
1	M	378	SER	2.3
1	M	421	ASN	2.3
1	M	305[A]	GLU	2.1
1	M	5	THR	2.0
1	M	379	THR	2.0

6.2 Non-standard residues in protein, DNA, RNA chains [i](#)

There are no non-standard protein/DNA/RNA residues in this entry.

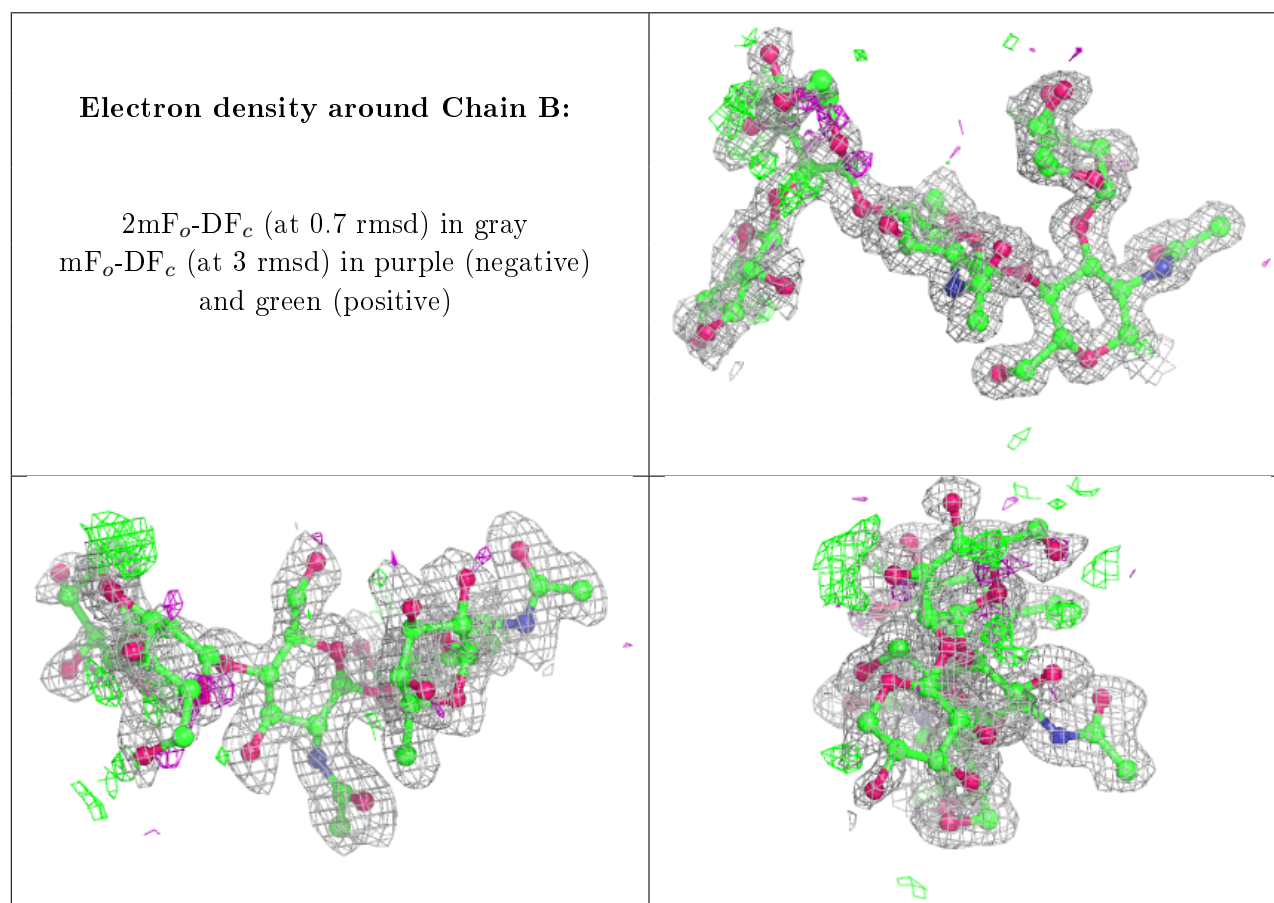
6.3 Carbohydrates [i](#)

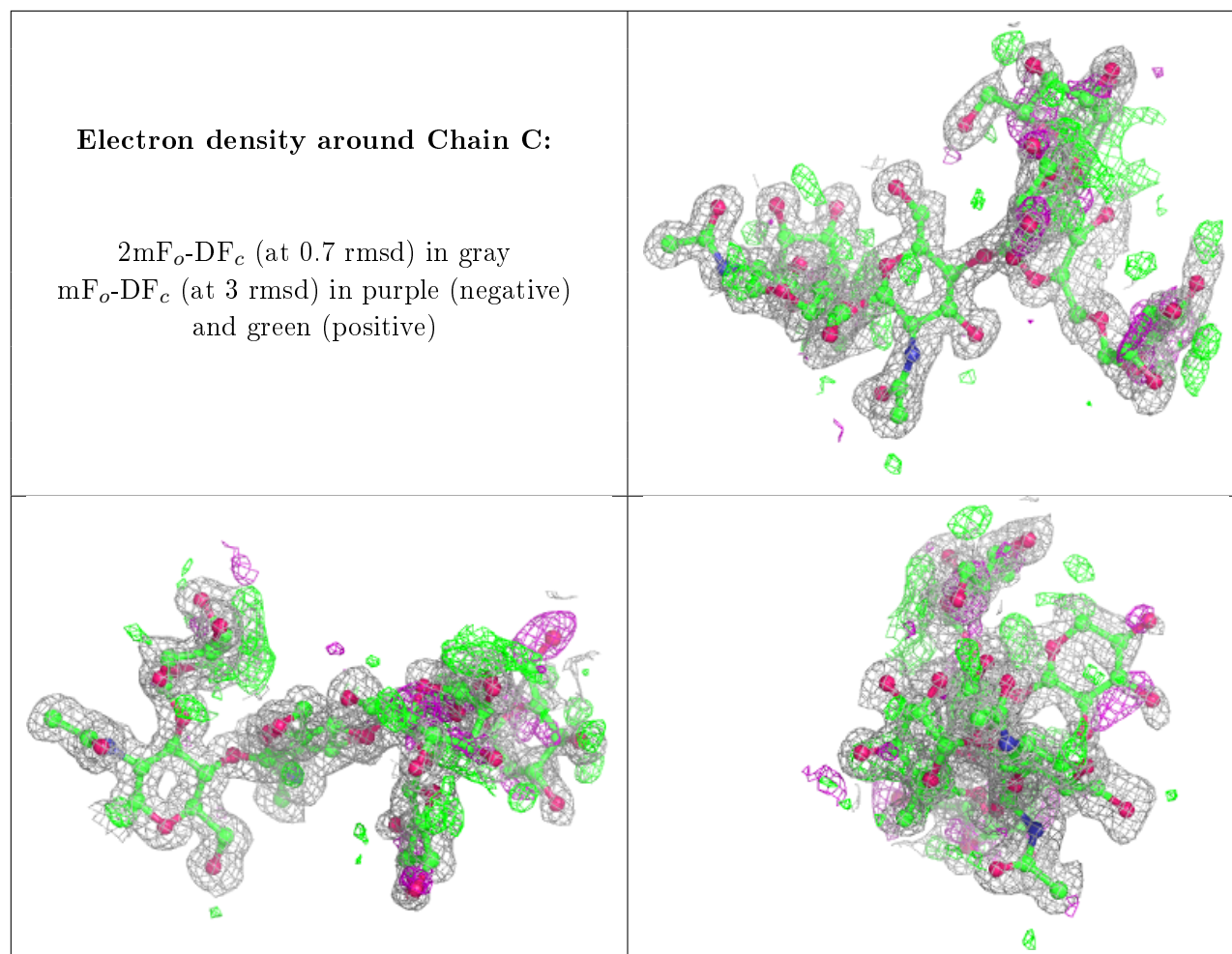
In the following table, the Atoms column lists the number of modelled atoms in the group and the number defined in the chemical component dictionary. The B-factors column lists the minimum,

median, 95th percentile and maximum values of B factors of atoms in the group. The column labelled 'Q< 0.9' lists the number of atoms with occupancy less than 0.9.

Mol	Type	Chain	Res	Atoms	RSCC	RSR	B-factors(Å ²)	Q<0.9
4	XYP	C	4	9/10	0.66	0.29	27,30,33,36	0
2	NAG	A	2	14/15	0.66	0.34	28,34,39,41	0
3	XYP	B	4	9/10	0.70	0.32	35,37,39,40	0
4	MAN	C	6	11/12	0.72	0.43	30,35,40,45	0
3	BMA	B	3	11/12	0.73	0.33	29,33,35,38	0
4	MAN	C	5	11/12	0.82	0.28	19,26,32,32	0
4	BMA	C	3	11/12	0.92	0.10	16,21,25,25	0
3	FUC	B	5	10/11	0.93	0.18	20,25,29,31	0
4	FUC	C	7	10/11	0.94	0.12	12,14,16,18	0
3	NAG	B	2	14/15	0.95	0.09	18,21,25,30	0
2	NAG	A	1	14/15	0.96	0.08	12,17,23,24	0
4	NAG	C	1	14/15	0.97	0.07	12,13,17,21	0
4	NAG	C	2	14/15	0.97	0.08	14,16,23,25	0
3	NAG	B	1	14/15	0.98	0.05	13,15,17,19	0

The following is a graphical depiction of the model fit to experimental electron density for oligosaccharide. Each fit is shown from different orientation to approximate a three-dimensional view.





6.4 Ligands [i](#)

In the following table, the Atoms column lists the number of modelled atoms in the group and the number defined in the chemical component dictionary. The B-factors column lists the minimum, median, 95th percentile and maximum values of B factors of atoms in the group. The column labelled 'Q< 0.9' lists the number of atoms with occupancy less than 0.9.

Mol	Type	Chain	Res	Atoms	RSCC	RSR	B-factors(Å ²)	Q<0.9
5	NAG	M	971	14/15	0.40	0.52	48,55,56,57	0
8	GOL	M	1511	6/6	0.56	0.30	30,35,35,36	6
5	NAG	M	961	14/15	0.56	0.48	30,37,45,45	0
7	SO4	M	1508	5/5	0.58	0.29	20,26,27,29	5
8	GOL	M	1514	6/6	0.72	0.26	24,24,26,28	6
5	NAG	M	931	14/15	0.74	0.33	28,35,40,40	0
5	NAG	M	991	14/15	0.75	0.40	27,31,39,40	0
7	SO4	M	1505	5/5	0.80	0.23	18,21,24,26	5
7	SO4	M	1509	5/5	0.83	0.22	30,31,31,32	5
7	SO4	M	1510	5/5	0.83	0.35	32,33,36,38	1

Continued on next page...

Continued from previous page...

Mol	Type	Chain	Res	Atoms	RSCC	RSR	B-factors(\AA^2)	Q<0.9
5	NAG	M	901	14/15	0.85	0.16	26,29,32,34	0
7	SO4	M	1507	5/5	0.90	0.20	22,23,26,27	5
5	NAG	M	911	14/15	0.91	0.17	18,20,24,24	0
8	GOL	M	1513	6/6	0.91	0.18	9,16,21,23	6
8	GOL	M	1512[A]	6/6	0.93	0.13	6,11,12,12	2
8	GOL	M	1512[B]	6/6	0.93	0.13	8,12,12,15	2
7	SO4	M	1504	5/5	0.93	0.19	17,21,25,26	5
8	GOL	M	1515	6/6	0.97	0.08	9,11,15,15	0
7	SO4	M	1503	5/5	0.97	0.16	16,18,23,25	5
7	SO4	M	1506	5/5	0.99	0.05	13,14,19,21	0
6	ZN	M	1502	1/1	1.00	0.03	5,5,5,5	1

6.5 Other polymers [i](#)

There are no such residues in this entry.