



Full wwPDB X-ray Structure Validation Report ⓘ

May 26, 2020 – 11:10 am BST

PDB ID : 2E49
Title : Crystal Structure of Human D-Amino Acid Oxidase in Complex with Imino-Serine
Authors : Kawazoe, T.; Tsuge, H.; Imagawa, T.; Fukui, K.
Deposited on : 2006-12-05
Resolution : 3.20 Å(reported)

This is a Full wwPDB X-ray Structure Validation Report for a publicly released PDB entry.

We welcome your comments at validation@mail.wwpdb.org

A user guide is available at

<https://www.wwpdb.org/validation/2017/XrayValidationReportHelp>

with specific help available everywhere you see the ⓘ symbol.

The following versions of software and data (see [references ⓘ](#)) were used in the production of this report:

MolProbity : 4.02b-467
Mogul : 1.8.5 (274361), CSD as541be (2020)
Xtriage (Phenix) : 1.13
EDS : 2.11
buster-report : 1.1.7 (2018)
Percentile statistics : 20191225.v01 (using entries in the PDB archive December 25th 2019)
Refmac : 5.8.0158
CCP4 : 7.0.044 (Gargrove)
Ideal geometry (proteins) : Engh & Huber (2001)
Ideal geometry (DNA, RNA) : Parkinson et al. (1996)
Validation Pipeline (wwPDB-VP) : 2.11

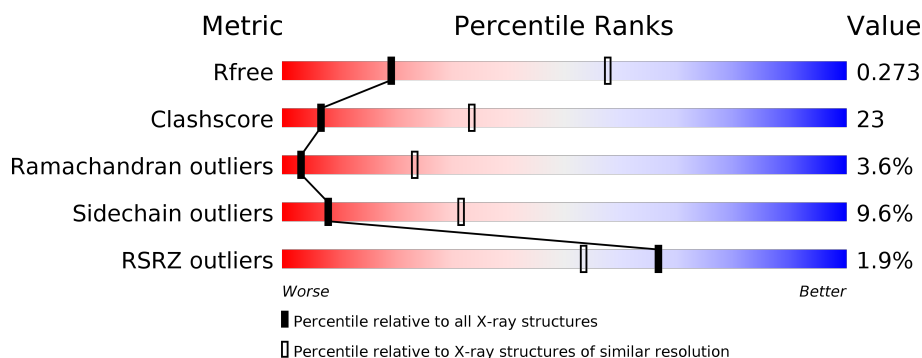
1 Overall quality at a glance

The following experimental techniques were used to determine the structure:

X-RAY DIFFRACTION

The reported resolution of this entry is 3.20 Å.

Percentile scores (ranging between 0-100) for global validation metrics of the entry are shown in the following graphic. The table shows the number of entries on which the scores are based.



Metric	Whole archive (#Entries)	Similar resolution (#Entries, resolution range(Å))
R_{free}	130704	1133 (3.20-3.20)
Clashscore	141614	1253 (3.20-3.20)
Ramachandran outliers	138981	1234 (3.20-3.20)
Sidechain outliers	138945	1233 (3.20-3.20)
RSRZ outliers	127900	1095 (3.20-3.20)

The table below summarises the geometric issues observed across the polymeric chains and their fit to the electron density. The red, orange, yellow and green segments on the lower bar indicate the fraction of residues that contain outliers for ≥ 3 , 2, 1 and 0 types of geometric quality criteria respectively. A grey segment represents the fraction of residues that are not modelled. The numeric value for each fraction is indicated below the corresponding segment, with a dot representing fractions $\leq 5\%$. The upper red bar (where present) indicates the fraction of residues that have poor fit to the electron density. The numeric value is given above the bar.

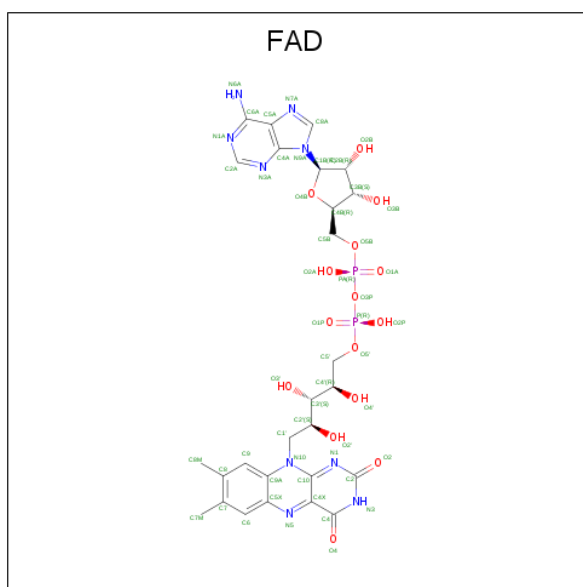
Mol	Chain	Length	Quality of chain
1	A	347	<div> <div>3%</div> <div> <div></div> <div>54%</div> <div>37%</div> <div>7%</div> </div> </div>
1	B	347	<div> <div>3%</div> <div> <div></div> <div>51%</div> <div>42%</div> <div>5%</div> </div> </div>
1	C	347	<div> <div>%</div> <div> <div></div> <div>52%</div> <div>41%</div> </div> </div>
1	D	347	<div> <div>%</div> <div> <div></div> <div>53%</div> <div>38%</div> <div>6%</div> </div> </div>

In the tables below, the ZeroOcc column contains the number of atoms modelled with zero occupancy, the AltConf column contains the number of residues with at least one atom in alternate conformation and the Trace column contains the number of residues modelled with at most 2 atoms.

- Molecule 1 is a protein called D-amino-acid oxidase.

Mol	Chain	Residues	Atoms					ZeroOcc	AltConf	Trace
1	A	340	Total 2733	C 1751	N 479	O 494	S 9	0	0	0
1	B	340	Total 2733	C 1751	N 479	O 494	S 9	0	0	0
1	C	340	Total 2733	C 1751	N 479	O 494	S 9	0	0	0
1	D	340	Total 2733	C 1751	N 479	O 494	S 9	0	0	0

- Molecule 2 is FLAVIN-ADENINE DINUCLEOTIDE (three-letter code: FAD) (formula: $\text{C}_{27}\text{H}_{33}\text{N}_9\text{O}_{15}\text{P}_2$).



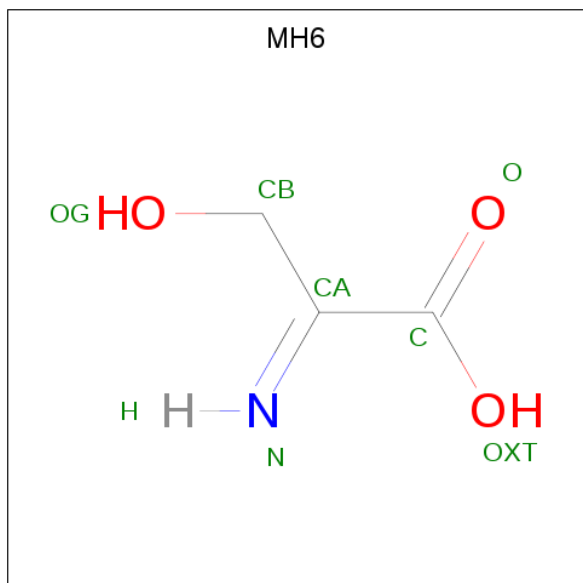
Mol	Chain	Residues	Atoms					ZeroOcc	AltConf
2	A	1	Total 53	C 27	N 9	O 15	P 2	0	0
2	B	1	Total 53	C 27	N 9	O 15	P 2	0	0

Continued on next page...

Continued from previous page...

Mol	Chain	Residues	Atoms					ZeroOcc	AltConf
2	C	1	Total	C	N	O	P	0	0
			53	27	9	15	2		
2	D	1	Total	C	N	O	P	0	0
			53	27	9	15	2		

- Molecule 3 is 3-hydroxy-2-iminopropanoic acid (three-letter code: MH6) (formula: $C_3H_5NO_3$).



Mol	Chain	Residues	Atoms				ZeroOcc	AltConf
3	A	1	Total	C	N	O	0	0
			7	3	1	3		
3	B	1	Total	C	N	O	0	0
			7	3	1	3		
3	C	1	Total	C	N	O	0	0
			7	3	1	3		
3	D	1	Total	C	N	O	0	0
			7	3	1	3		

- Molecule 4 is water.

Mol	Chain	Residues	Atoms		ZeroOcc	AltConf
4	A	24	Total	O	0	0
			24	24		
4	B	28	Total	O	0	0
			28	28		
4	C	32	Total	O	0	0
			32	32		

Continued on next page...

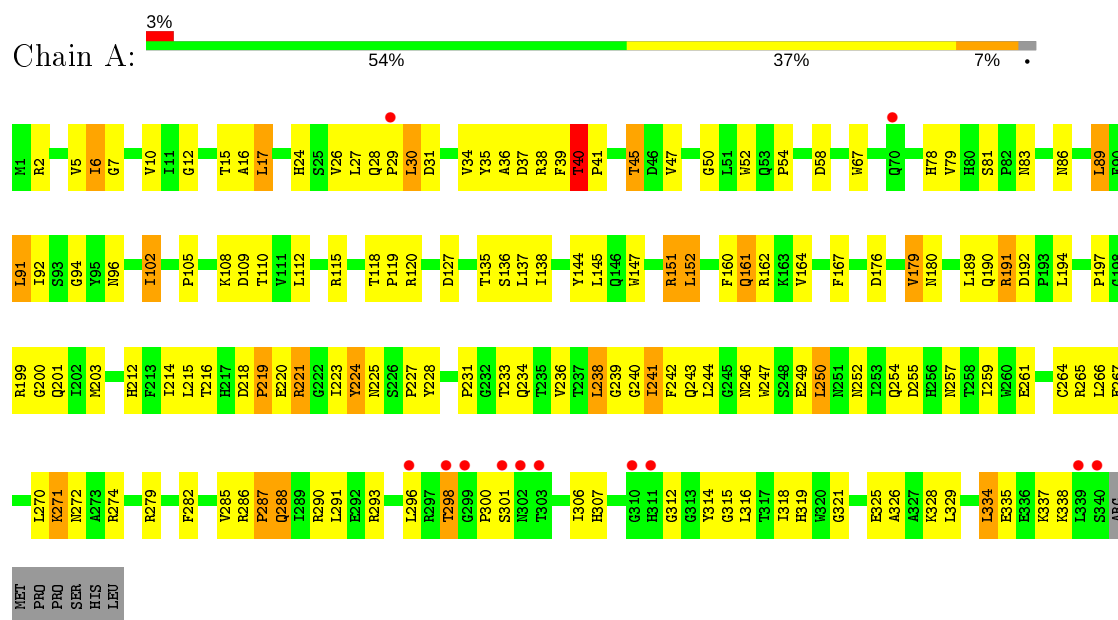
Continued from previous page...

Mol	Chain	Residues	Atoms		ZeroOcc	AltConf
4	D	28	Total	O	0	0
			28	28		

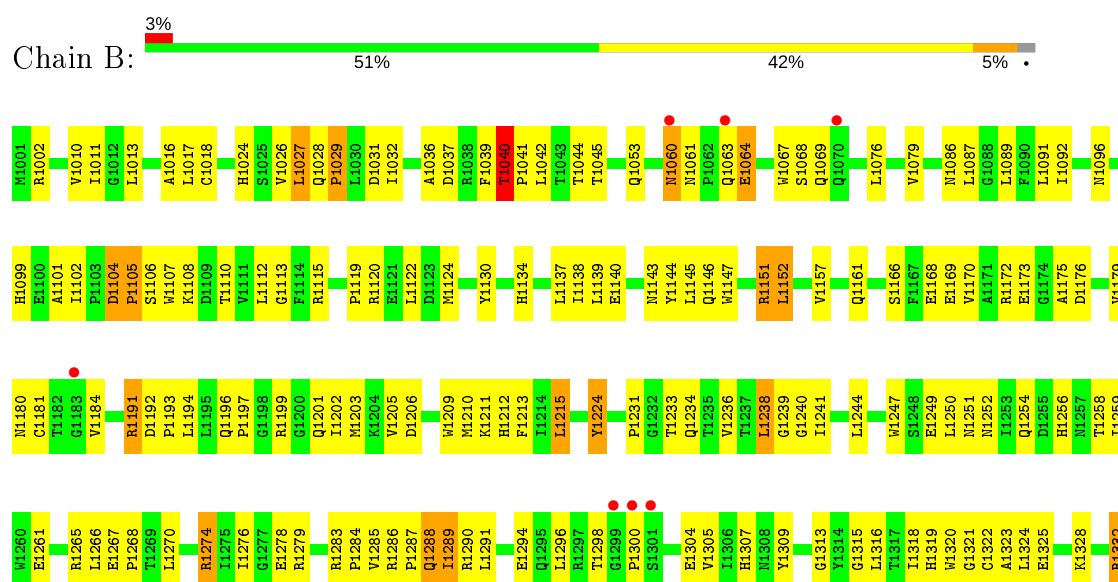
3 Residue-property plots

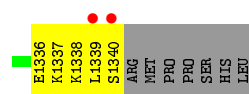
These plots are drawn for all protein, RNA and DNA chains in the entry. The first graphic for a chain summarises the proportions of the various outlier classes displayed in the second graphic. The second graphic shows the sequence view annotated by issues in geometry and electron density. Residues are color-coded according to the number of geometric quality criteria for which they contain at least one outlier: green = 0, yellow = 1, orange = 2 and red = 3 or more. A red dot above a residue indicates a poor fit to the electron density ($RSRZ > 2$). Stretches of 2 or more consecutive residues without any outlier are shown as a green connector. Residues present in the sample, but not in the model, are shown in grey.

• Molecule 1: D-amino-acid oxidase

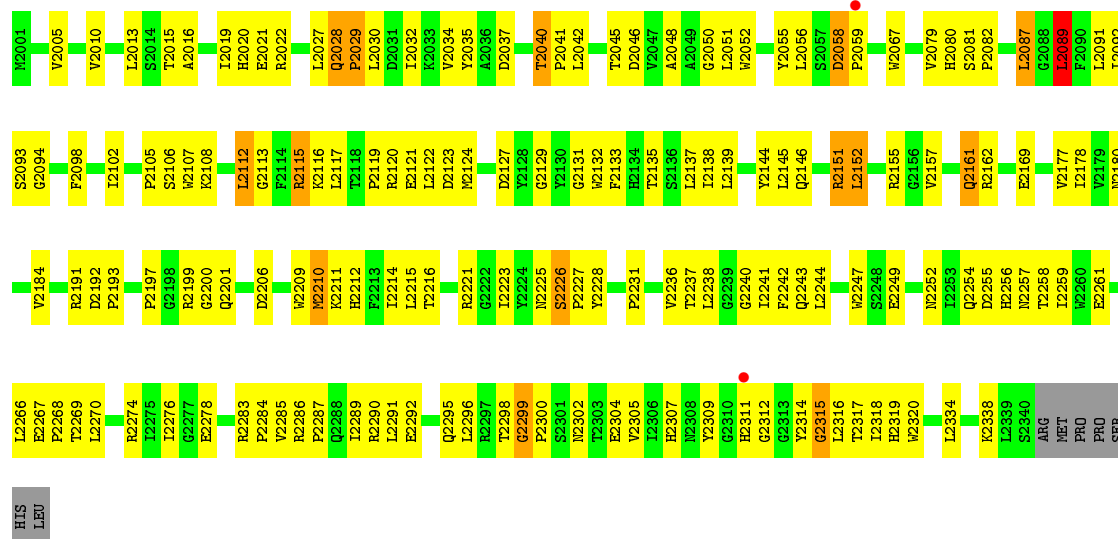


• Molecule 1: D-amino-acid oxidase

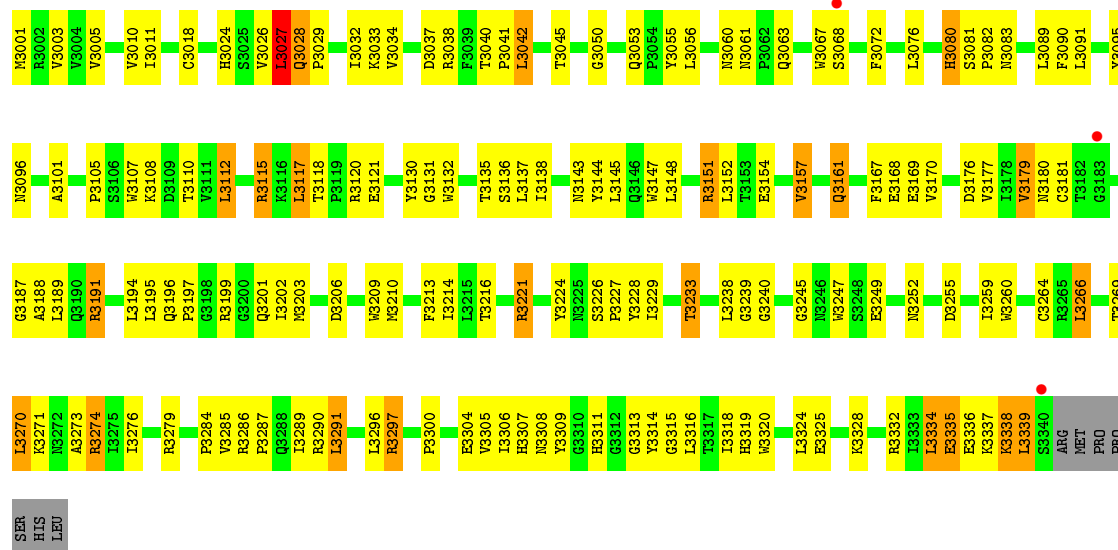




• Molecule 1: D-amino-acid oxidase



• Molecule 1: D-amino-acid oxidase



4 Data and refinement statistics

Property	Value	Source
Space group	P 21 21 2	Depositor
Cell constants a, b, c, α , β , γ	149.66 Å 181.75 Å 50.72 Å 90.00° 90.00° 90.00°	Depositor
Resolution (Å)	50.00 – 3.20 48.85 – 3.19	Depositor EDS
% Data completeness (in resolution range)	97.2 (50.00-3.20) 97.2 (48.85-3.19)	Depositor EDS
R_{merge}	0.13	Depositor
R_{sym}	(Not available)	Depositor
$\langle I/\sigma(I) \rangle$ ¹	3.36 (at 3.19 Å)	Xtriage
Refinement program	REFMAC 5.2.0005	Depositor
R, R_{free}	0.221 , 0.276 0.219 , 0.273	Depositor DCC
R_{free} test set	1187 reflections (5.13%)	wwPDB-VP
Wilson B-factor (Å ²)	51.3	Xtriage
Anisotropy	1.057	Xtriage
Bulk solvent k_{sol} (e/Å ³), B_{sol} (Å ²)	0.36 , 64.2	EDS
L-test for twinning ²	$\langle L \rangle = 0.49$, $\langle L^2 \rangle = 0.32$	Xtriage
Estimated twinning fraction	No twinning to report.	Xtriage
F_o, F_c correlation	0.92	EDS
Total number of atoms	11284	wwPDB-VP
Average B, all atoms (Å ²)	40.0	wwPDB-VP

Xtriage's analysis on translational NCS is as follows: *The analyses of the Patterson function reveals a significant off-origin peak that is 20.81 % of the origin peak, indicating pseudo-translational symmetry. The chance of finding a peak of this or larger height randomly in a structure without pseudo-translational symmetry is equal to 8.0163e-03. The detected translational NCS is most likely also responsible for the elevated intensity ratio.*

¹ Intensities estimated from amplitudes.

² Theoretical values of $\langle |L| \rangle$, $\langle L^2 \rangle$ for acentric reflections are 0.5, 0.333 respectively for untwinned datasets, and 0.375, 0.2 for perfectly twinned datasets.

5 Model quality

5.1 Standard geometry

Bond lengths and bond angles in the following residue types are not validated in this section: MH6, FAD

The Z score for a bond length (or angle) is the number of standard deviations the observed value is removed from the expected value. A bond length (or angle) with $|Z| > 5$ is considered an outlier worth inspection. RMSZ is the root-mean-square of all Z scores of the bond lengths (or angles).

Mol	Chain	Bond lengths		Bond angles	
		RMSZ	# Z >5	RMSZ	# Z >5
1	A	0.60	2/2810 (0.1%)	0.65	0/3824
1	B	0.62	1/2810 (0.0%)	0.64	1/3824 (0.0%)
1	C	0.60	0/2810	0.65	1/3824 (0.0%)
1	D	0.56	0/2810	0.66	0/3824
All	All	0.59	3/11240 (0.0%)	0.65	2/15296 (0.0%)

All (3) bond length outliers are listed below:

Mol	Chain	Res	Type	Atoms	Z	Observed(Å)	Ideal(Å)
1	A	338	LYS	CE-NZ	6.72	1.65	1.49
1	B	1064	GLU	CB-CG	5.64	1.62	1.52
1	A	338	LYS	CD-CE	5.64	1.65	1.51

All (2) bond angle outliers are listed below:

Mol	Chain	Res	Type	Atoms	Z	Observed(°)	Ideal(°)
1	C	2089	LEU	CA-CB-CG	5.57	128.10	115.30
1	B	1040	THR	N-CA-C	5.18	124.99	111.00

There are no chirality outliers.

There are no planarity outliers.

5.2 Too-close contacts

In the following table, the Non-H and H(model) columns list the number of non-hydrogen atoms and hydrogen atoms in the chain respectively. The H(added) column lists the number of hydrogen atoms added and optimized by MolProbity. The Clashes column lists the number of clashes within the asymmetric unit, whereas Symm-Clashes lists symmetry related clashes.

Mol	Chain	Non-H	H(model)	H(added)	Clashes	Symm-Clashes
1	A	2733	0	2680	116	0
1	B	2733	0	2677	134	0
1	C	2733	0	2677	136	0
1	D	2733	0	2677	124	0
2	A	53	0	31	8	0
2	B	53	0	31	11	0
2	C	53	0	31	4	0
2	D	53	0	31	12	0
3	A	7	0	3	0	0
3	B	7	0	3	0	0
3	C	7	0	3	0	0
3	D	7	0	4	2	0
4	A	24	0	0	3	0
4	B	28	0	0	3	0
4	C	32	0	0	4	0
4	D	28	0	0	1	0
All	All	11284	0	10848	508	0

The all-atom clashscore is defined as the number of clashes found per 1000 atoms (including hydrogen atoms). The all-atom clashscore for this structure is 23.

All (508) close contacts within the same asymmetric unit are listed below, sorted by their clash magnitude.

Atom-1	Atom-2	Interatomic distance (Å)	Clash overlap (Å)
2:B:1351:FAD:C4'	2:B:1351:FAD:C5'	1.79	1.55
2:D:3351:FAD:C4'	2:D:3351:FAD:C5'	1.93	1.47
2:B:1351:FAD:O4'	2:B:1351:FAD:C4'	1.65	1.42
3:D:3352:MH6:OG	3:D:3352:MH6:CB	1.72	1.36
1:D:3252:ASN:HB3	1:D:3255:ASP:HB2	1.22	1.10
1:C:2040:THR:OG1	1:C:2041:PRO:HD3	1.66	0.94
1:A:199:ARG:HH22	1:A:201:GLN:HE21	1.17	0.92
1:C:2298:THR:HB	1:C:2302:ASN:HA	1.51	0.92
1:D:3180:ASN:HD22	1:D:3307:HIS:CD2	1.90	0.90
1:B:1040:THR:HG23	1:B:1041:PRO:HD3	1.56	0.86
1:D:3199:ARG:HH22	1:D:3201:GLN:NE2	1.76	0.84
1:D:3010:VAL:HG21	1:D:3316:LEU:HD13	1.60	0.83
1:B:1079:VAL:HG21	1:B:1091:LEU:HD12	1.58	0.82
1:C:2151:ARG:O	1:C:2155:ARG:HG3	1.79	0.82
1:D:3147:TRP:CE2	1:D:3151:ARG:HD3	2.14	0.82
1:C:2112:LEU:HB2	1:C:2135:THR:HB	1.62	0.82
1:D:3037:ASP:HB3	2:D:3351:FAD:O2B	1.81	0.81
1:A:199:ARG:HH22	1:A:201:GLN:NE2	1.79	0.79

Continued on next page...

Continued from previous page...

Atom-1	Atom-2	Interatomic distance (Å)	Clash overlap (Å)
1:D:3027:LEU:HD11	1:D:3334:LEU:HG	1.65	0.78
1:B:1079:VAL:HG21	1:B:1091:LEU:CD1	2.14	0.78
2:B:1351:FAD:C3'	2:B:1351:FAD:C5'	2.62	0.78
1:D:3041:PRO:HB2	1:D:3042:LEU:HD23	1.68	0.76
2:D:3351:FAD:C3'	2:D:3351:FAD:C5'	2.64	0.76
1:D:3027:LEU:HD21	1:D:3334:LEU:HD21	1.67	0.76
1:B:1201:GLN:HE22	1:B:1252:ASN:H	1.32	0.76
1:B:1241:ILE:HD13	1:B:1259:ILE:HD11	1.67	0.76
1:C:2199:ARG:HH22	1:C:2201:GLN:HE21	1.30	0.75
1:C:2315:GLY:HA3	2:C:2351:FAD:H4'	1.68	0.74
1:D:3206:ASP:HB2	1:D:3276:ILE:HD11	1.71	0.73
1:B:1028:GLN:HB3	1:B:1029:PRO:HD3	1.70	0.73
1:A:239:GLY:HA2	1:A:259:ILE:HD12	1.70	0.73
1:D:3112:LEU:HB2	1:D:3135:THR:HB	1.72	0.72
1:D:3216:THR:O	1:D:3226:SER:HB2	1.89	0.72
1:B:1010:VAL:HB	1:B:1045:THR:HG21	1.70	0.72
1:B:1144:TYR:OH	1:B:1319:HIS:CE1	2.43	0.71
1:A:199:ARG:NH2	1:A:201:GLN:HE21	1.89	0.71
1:B:1040:THR:HA	1:B:1145:LEU:HD23	1.71	0.71
1:D:3315:GLY:HA3	2:D:3351:FAD:H4'	1.72	0.71
1:A:40:THR:OG1	1:A:41:PRO:HD3	1.91	0.71
1:C:2231:PRO:HA	1:C:2236:VAL:HG13	1.72	0.71
1:B:1087:LEU:HD23	1:B:1089:LEU:HD12	1.74	0.70
1:C:2117:LEU:HB2	1:C:2122:LEU:HD21	1.72	0.70
1:A:255:ASP:O	1:A:259:ILE:HG12	1.91	0.70
1:A:161:GLN:NE2	1:D:3249:GLU:H	1.89	0.69
1:B:1239:GLY:HA2	1:B:1259:ILE:HD12	1.74	0.69
1:C:2201:GLN:NE2	1:C:2252:ASN:H	1.91	0.69
1:B:1037:ASP:HB3	2:B:1351:FAD:O2B	1.93	0.68
1:B:1233:THR:HG23	1:B:1234:GLN:N	2.09	0.68
1:C:2119:PRO:HA	1:C:2122:LEU:HD12	1.75	0.68
1:D:3252:ASN:CB	1:D:3255:ASP:HB2	2.13	0.68
1:B:1201:GLN:NE2	1:B:1252:ASN:H	1.90	0.68
1:C:2115:ARG:NH2	1:C:2121:GLU:OE2	2.26	0.68
1:D:3196:GLN:O	1:D:3285:VAL:HB	1.94	0.68
1:B:1180:ASN:HB3	1:B:1307:HIS:HD2	1.58	0.67
1:C:2127:ASP:HA	4:C:83:HOH:O	1.93	0.67
1:B:1119:PRO:HA	1:B:1122:LEU:HD12	1.75	0.67
1:D:3003:VAL:HB	1:D:3032:ILE:HG12	1.77	0.67
1:C:2199:ARG:HH22	1:C:2201:GLN:NE2	1.92	0.67
1:D:3152:LEU:HD12	1:D:3157:VAL:HG21	1.76	0.67

Continued on next page...

Continued from previous page...

Atom-1	Atom-2	Interatomic distance (Å)	Clash overlap (Å)
1:A:200:GLY:HA2	1:A:241:ILE:HG22	1.76	0.67
1:A:201:GLN:HE22	1:A:252:ASN:H	1.40	0.67
1:C:2252:ASN:HD21	1:C:2254:GLN:HB3	1.60	0.66
1:B:1199:ARG:HH22	1:B:1201:GLN:HE21	1.41	0.66
1:C:2201:GLN:HE22	1:C:2252:ASN:H	1.44	0.66
1:A:67:TRP:HB2	1:A:318:ILE:HD11	1.76	0.66
1:B:1092:ILE:HG21	1:B:1138:ILE:HG13	1.77	0.65
1:A:223:ILE:O	1:A:225:ASN:N	2.30	0.65
1:B:1315:GLY:HA3	2:B:1351:FAD:H4'	1.78	0.65
1:A:197:PRO:HG3	1:A:247:TRP:CE2	2.31	0.65
1:B:1096:ASN:HD22	1:B:1134:HIS:HE1	1.43	0.65
1:A:17:LEU:HB2	1:A:152:LEU:HD11	1.79	0.64
1:B:1199:ARG:HH22	1:B:1201:GLN:NE2	1.96	0.64
1:B:1224:TYR:CE2	1:B:1313:GLY:HA3	2.33	0.64
1:C:2291:LEU:HA	1:C:2307:HIS:O	1.98	0.64
1:D:3028:GLN:NE2	1:D:3029:PRO:HD3	2.12	0.64
1:D:3180:ASN:HD22	1:D:3307:HIS:HD2	1.45	0.64
1:C:2010:VAL:HG21	1:C:2316:LEU:HD13	1.80	0.63
1:C:2045:THR:HG23	1:C:2316:LEU:HD21	1.80	0.63
1:D:3197:PRO:HG3	1:D:3247:TRP:CE2	2.34	0.63
1:A:115:ARG:HD3	4:A:373:HOH:O	1.98	0.63
1:A:189:LEU:HD11	2:A:351:FAD:H61A	1.64	0.63
1:D:3284:PRO:HG2	1:D:3311:HIS:H	1.64	0.63
1:C:2124:MET:SD	1:D:3091:LEU:HD11	2.39	0.62
1:A:41:PRO:HG2	1:D:3279:ARG:HD3	1.80	0.62
1:A:201:GLN:NE2	1:A:252:ASN:H	1.96	0.62
1:B:1147:TRP:CE2	1:B:1151:ARG:HD3	2.34	0.62
1:D:3274:ARG:HE	1:D:3274:ARG:HA	1.63	0.62
1:B:1196:GLN:NE2	1:B:1244:LEU:HD13	2.15	0.62
1:A:5:VAL:HA	1:A:179:VAL:HG23	1.81	0.61
1:C:2206:ASP:HB2	1:C:2276:ILE:HD11	1.82	0.61
1:C:2037:ASP:HB3	2:C:2351:FAD:O2B	2.00	0.61
1:A:298:THR:HG23	1:A:301:SER:O	1.99	0.61
1:C:2199:ARG:HH11	1:C:2243:GLN:HE22	1.46	0.61
1:C:2021:GLU:HG3	1:C:2022:ARG:H	1.66	0.61
1:A:147:TRP:NE1	1:A:151:ARG:HD3	2.16	0.61
1:C:2120:ARG:HH22	1:D:3110:THR:C	2.04	0.60
1:C:2199:ARG:NH2	1:C:2201:GLN:HE21	1.98	0.60
1:B:1179:VAL:HG12	1:B:1181:CYS:SG	2.42	0.60
1:A:179:VAL:HG12	1:A:306:ILE:HB	1.83	0.60
1:B:1279:ARG:HH11	1:B:1279:ARG:HG3	1.66	0.60

Continued on next page...

Continued from previous page...

Atom-1	Atom-2	Interatomic distance (Å)	Clash overlap (Å)
1:C:2177:VAL:HG22	1:C:2304:GLU:HB2	1.84	0.60
1:B:1053:GLN:HE22	1:B:1096:ASN:HD21	1.48	0.60
2:B:1351:FAD:C4'	2:B:1351:FAD:O5'	2.50	0.60
1:B:1339:LEU:O	1:B:1340:SER:HB2	2.02	0.60
1:A:216:THR:HG23	1:A:266:LEU:HD11	1.84	0.60
1:B:1233:THR:HG23	1:B:1234:GLN:H	1.66	0.60
1:B:1018:CYS:SG	1:B:1324:LEU:HD12	2.42	0.60
1:A:6:ILE:HG21	1:A:164:VAL:HG21	1.84	0.59
1:D:3274:ARG:HA	1:D:3274:ARG:NE	2.16	0.59
1:B:1168:GLU:HG3	1:B:1298:THR:HG22	1.84	0.59
1:B:1250:LEU:HD12	1:B:1251:ASN:N	2.18	0.59
1:C:2028:GLN:HG3	1:C:2029:PRO:HD3	1.84	0.59
1:A:215:LEU:HD22	1:A:228:TYR:HB2	1.85	0.59
1:B:1274:ARG:HA	1:B:1274:ARG:NE	2.18	0.59
1:C:2027:LEU:HD11	1:C:2334:LEU:HD13	1.83	0.59
1:B:1268:PRO:C	1:B:1270:LEU:H	2.07	0.58
1:B:1105:PRO:HD2	1:B:1108:LYS:HB2	1.86	0.58
1:B:1184:VAL:HG22	1:B:1247:TRP:CH2	2.38	0.58
1:A:38:ARG:O	2:A:351:FAD:O3B	2.21	0.58
1:A:120:ARG:NH1	1:B:1110:THR:O	2.36	0.58
2:B:1351:FAD:HO4'	2:B:1351:FAD:C4'	2.09	0.58
1:A:167:PHE:HB3	1:A:296:LEU:HD21	1.86	0.57
1:A:199:ARG:HH11	1:A:243:GLN:HE22	1.52	0.57
1:C:2210:MET:SD	1:C:2267:GLU:HG2	2.44	0.57
1:C:2144:TYR:HE2	1:C:2319:HIS:CE1	2.22	0.57
1:D:3005:VAL:HG13	1:D:3179:VAL:HB	1.87	0.57
1:D:3194:LEU:HB3	1:D:3287:PRO:HD2	1.86	0.57
1:C:2040:THR:O	1:C:2046:ASP:OD2	2.23	0.57
1:C:2079:VAL:HA	1:C:2089:LEU:CD1	2.34	0.57
1:B:1061:ASN:O	1:B:1064:GLU:HB2	2.05	0.56
1:B:1241:ILE:HD13	1:B:1259:ILE:CD1	2.34	0.56
1:C:2079:VAL:HA	1:C:2089:LEU:HD11	1.87	0.56
1:C:2092:ILE:HG21	1:C:2138:ILE:HG13	1.86	0.56
1:A:221:ARG:O	1:A:225:ASN:HB3	2.05	0.56
1:D:3117:LEU:HD23	1:D:3121:GLU:HG3	1.88	0.56
1:B:1144:TYR:OH	1:B:1319:HIS:HE1	1.87	0.56
1:A:96:ASN:HA	1:A:215:LEU:O	2.05	0.56
1:B:1203:MET:HB3	1:B:1238:LEU:HB2	1.88	0.56
1:C:2035:TYR:CE2	1:C:2162:ARG:HD3	2.40	0.56
1:D:3255:ASP:O	1:D:3259:ILE:HG12	2.06	0.56
1:B:1028:GLN:CB	1:B:1029:PRO:HD3	2.36	0.56

Continued on next page...

Continued from previous page...

Atom-1	Atom-2	Interatomic distance (Å)	Clash overlap (Å)
1:A:221:ARG:HB2	1:A:221:ARG:NH2	2.20	0.56
1:B:1325:GLU:O	1:B:1328:LYS:HB3	2.05	0.56
1:D:3203:MET:HB3	1:D:3238:LEU:HB2	1.88	0.56
1:A:37:ASP:HB3	2:A:351:FAD:O2B	2.06	0.55
1:B:1104:ASP:HB3	1:B:1105:PRO:CD	2.36	0.55
1:C:2032:ILE:HB	1:C:2157:VAL:HG22	1.88	0.55
1:D:3040:THR:HA	1:D:3145:LEU:HD23	1.87	0.55
1:D:3199:ARG:HH22	1:D:3201:GLN:HE21	1.52	0.55
1:B:1201:GLN:HE22	1:B:1252:ASN:N	2.00	0.55
1:A:167:PHE:HB3	1:A:296:LEU:CD2	2.37	0.55
1:C:2139:LEU:HD21	1:C:2144:TYR:CD2	2.42	0.55
1:A:216:THR:OG1	1:A:227:PRO:O	2.23	0.55
1:A:115:ARG:HH12	1:B:1113:GLY:HA3	1.70	0.55
1:D:3216:THR:O	1:D:3226:SER:CB	2.55	0.55
1:A:5:VAL:O	1:A:34:VAL:HA	2.07	0.55
1:D:3011:ILE:HG12	2:D:3351:FAD:O5'	2.06	0.55
1:D:3067:TRP:CZ2	1:D:3325:GLU:HG2	2.42	0.55
1:C:2081:SER:HB2	1:C:2082:PRO:HD2	1.89	0.54
1:D:3199:ARG:HH22	1:D:3201:GLN:HE22	1.53	0.54
1:B:1196:GLN:O	1:B:1285:VAL:HB	2.08	0.54
1:A:286:ARG:CZ	1:A:290:ARG:HB2	2.38	0.54
1:A:5:VAL:HG21	1:A:16:ALA:HB2	1.90	0.54
1:D:3105:PRO:HD3	1:D:3132:TRP:CZ2	2.42	0.54
1:B:1286:ARG:HH12	1:B:1290:ARG:HD2	1.72	0.54
1:A:293:ARG:HB2	1:A:329:LEU:HD22	1.88	0.54
1:C:2255:ASP:O	1:C:2259:ILE:HG12	2.08	0.54
1:A:108:LYS:HG3	1:A:109:ASP:OD1	2.08	0.54
1:A:267:GLU:O	1:A:270:LEU:HB2	2.08	0.54
2:B:1351:FAD:O4'	2:B:1351:FAD:C5'	2.55	0.54
1:A:233:THR:HG23	1:A:234:GLN:HG2	1.90	0.54
2:B:1351:FAD:O4'	2:B:1351:FAD:C3'	2.51	0.54
1:C:2005:VAL:HB	1:C:2034:VAL:HG22	1.89	0.53
1:D:3018:CYS:SG	1:D:3324:LEU:HD23	2.47	0.53
1:C:2290:ARG:HD3	1:C:2309:TYR:CE2	2.43	0.53
1:C:2319:HIS:CG	1:C:2320:TRP:N	2.76	0.53
1:D:3216:THR:HG23	1:D:3266:LEU:HD11	1.91	0.53
1:C:2268:PRO:HG2	1:D:3080:HIS:HB3	1.88	0.53
1:D:3101:ALA:HA	1:D:3130:TYR:CD2	2.43	0.53
1:D:3147:TRP:NE1	1:D:3151:ARG:HD3	2.22	0.53
1:B:1180:ASN:HB3	1:B:1307:HIS:CD2	2.41	0.53
1:B:1256:HIS:HD1	1:B:1278:GLU:CD	2.12	0.53

Continued on next page...

Continued from previous page...

Atom-1	Atom-2	Interatomic distance (Å)	Clash overlap (Å)
1:C:2112:LEU:HG	1:D:3121:GLU:HB3	1.91	0.53
1:C:2298:THR:HG22	1:C:2299:GLY:N	2.23	0.53
1:D:3038:ARG:O	2:D:3351:FAD:O3B	2.23	0.53
1:D:3214:ILE:HG21	1:D:3266:LEU:CD2	2.39	0.53
1:A:270:LEU:C	1:A:272:ASN:H	2.12	0.53
1:A:325:GLU:O	1:A:328:LYS:HB3	2.09	0.53
1:B:1060:ASN:ND2	1:B:1288:GLN:HB3	2.24	0.53
1:C:2231:PRO:CA	1:C:2236:VAL:HG13	2.39	0.53
1:A:250:LEU:HD23	1:A:250:LEU:O	2.08	0.52
1:A:41:PRO:HG2	1:D:3279:ARG:CD	2.39	0.52
1:B:1250:LEU:HD12	1:B:1251:ASN:H	1.74	0.52
1:B:1332:ARG:HG3	4:B:32:HOH:O	2.08	0.52
1:A:27:LEU:HD11	1:A:334:LEU:HD11	1.91	0.52
1:D:3227:PRO:HA	1:D:3239:GLY:O	2.09	0.52
1:B:1267:GLU:O	1:B:1270:LEU:HB2	2.09	0.52
1:D:3286:ARG:NH1	1:D:3290:ARG:HB2	2.23	0.52
1:B:1061:ASN:OD1	1:B:1063:GLN:HB2	2.09	0.52
1:B:1184:VAL:HG21	1:B:1197:PRO:HB3	1.91	0.52
1:D:3147:TRP:O	1:D:3151:ARG:HD2	2.08	0.52
1:C:2242:PHE:CZ	1:C:2285:VAL:HG21	2.45	0.52
1:A:7:GLY:O	1:A:12:GLY:HA3	2.09	0.52
1:B:1261:GLU:HB3	1:B:1265:ARG:NH1	2.25	0.52
1:C:2144:TYR:CE2	1:C:2319:HIS:CE1	2.98	0.52
1:D:3050:GLY:O	1:D:3138:ILE:HA	2.10	0.52
1:D:3224:TYR:HE2	1:D:3313:GLY:HA3	1.75	0.52
1:B:1319:HIS:CG	1:B:1320:TRP:N	2.77	0.52
1:B:1336:GLU:C	1:B:1338:LYS:H	2.13	0.52
1:C:2087:LEU:HD23	1:C:2139:LEU:HD11	1.91	0.52
1:D:3290:ARG:HD3	1:D:3309:TYR:CE2	2.45	0.52
1:B:1233:THR:HG23	1:B:1234:GLN:HG2	1.92	0.52
1:B:1086:ASN:O	1:B:1143:ASN:HB3	2.09	0.52
1:B:1244:LEU:HD21	1:B:1285:VAL:HG11	1.92	0.51
1:D:3076:LEU:HD13	1:D:3112:LEU:HD21	1.93	0.51
1:A:201:GLN:HE22	1:A:252:ASN:N	2.06	0.51
1:D:3319:HIS:CG	1:D:3320:TRP:N	2.78	0.51
1:D:3028:GLN:CD	1:D:3028:GLN:H	2.14	0.51
1:A:50:GLY:O	1:A:138:ILE:HA	2.10	0.51
1:C:2091:LEU:HD12	1:C:2137:LEU:HD23	1.92	0.51
1:A:231:PRO:HA	1:A:236:VAL:HG22	1.92	0.51
1:C:2151:ARG:O	1:C:2155:ARG:CG	2.56	0.51
1:A:110:THR:C	1:B:1120:ARG:HH22	2.14	0.51

Continued on next page...

Continued from previous page...

Atom-1	Atom-2	Interatomic distance (Å)	Clash overlap (Å)
1:D:3199:ARG:NH2	1:D:3201:GLN:NE2	2.53	0.51
1:A:112:LEU:HB2	1:A:135:THR:HB	1.93	0.51
1:A:120:ARG:NH1	1:B:1112:LEU:HD12	2.25	0.51
1:A:203:MET:HB3	1:A:238:LEU:HB2	1.93	0.50
1:C:2289:ILE:HD13	1:C:2311:HIS:CD2	2.46	0.50
1:B:1233:THR:CG2	1:B:1234:GLN:N	2.74	0.50
1:A:10:VAL:HB	1:A:45:THR:HG21	1.93	0.50
1:A:17:LEU:HD12	1:A:152:LEU:HD13	1.92	0.50
1:A:24:HIS:HA	1:A:30:LEU:HD22	1.94	0.50
1:A:91:LEU:HD11	1:B:1124:MET:SD	2.52	0.50
1:D:3053:GLN:HE22	1:D:3096:ASN:HD21	1.57	0.50
1:D:3147:TRP:HZ3	4:D:1:HOH:O	1.93	0.50
1:C:2177:VAL:HA	1:C:2304:GLU:O	2.12	0.50
1:D:3315:GLY:O	1:D:3319:HIS:N	2.43	0.50
1:D:3296:LEU:HD13	1:D:3305:VAL:HG21	1.94	0.50
1:A:271:LYS:HE2	4:A:355:HOH:O	2.12	0.50
1:B:1294:GLU:HB3	1:B:1305:VAL:HB	1.93	0.50
1:C:2040:THR:CB	1:C:2041:PRO:HD3	2.42	0.50
1:D:3325:GLU:OE1	1:D:3328:LYS:HD2	2.12	0.50
2:D:3351:FAD:O5'	2:D:3351:FAD:C4'	2.57	0.50
1:A:180:ASN:HD22	1:A:307:HIS:HD2	1.60	0.49
1:C:2139:LEU:HD21	1:C:2144:TYR:CE2	2.47	0.49
1:C:2216:THR:O	1:C:2226:SER:HB3	2.12	0.49
1:A:5:VAL:HG21	1:A:16:ALA:CB	2.42	0.49
1:B:1013:LEU:HD22	1:B:1152:LEU:HD23	1.94	0.49
1:C:2112:LEU:CB	1:C:2135:THR:HB	2.39	0.49
1:C:2197:PRO:HG3	1:C:2247:TRP:CE2	2.47	0.49
1:A:162:ARG:O	2:A:351:FAD:H2A	2.12	0.49
1:C:2267:GLU:HG3	1:C:2269:THR:OG1	2.12	0.49
1:A:337:LYS:HD2	1:A:337:LYS:N	2.27	0.49
1:A:40:THR:CB	1:A:41:PRO:HD3	2.42	0.49
1:B:1101:ALA:HA	1:B:1130:TYR:CD2	2.48	0.49
1:B:1206:ASP:HB2	1:B:1276:ILE:HD11	1.94	0.49
1:C:2045:THR:HG21	1:C:2145:LEU:HD11	1.94	0.49
1:C:2051:LEU:HA	1:C:2138:ILE:HG12	1.94	0.49
1:D:3089:LEU:O	1:D:3090:PHE:HB3	2.13	0.49
1:D:3177:VAL:HA	1:D:3304:GLU:O	2.13	0.49
1:D:3289:ILE:HD11	1:D:3314:TYR:HE2	1.76	0.49
1:B:1289:ILE:CD1	1:B:1318:ILE:HD13	2.43	0.49
1:C:2040:THR:HG21	1:C:2146:GLN:OE1	2.12	0.49
1:C:2199:ARG:HH11	1:C:2243:GLN:NE2	2.10	0.49

Continued on next page...

Continued from previous page...

Atom-1	Atom-2	Interatomic distance (Å)	Clash overlap (Å)
1:D:3067:TRP:HZ2	1:D:3325:GLU:HG2	1.78	0.49
1:B:1268:PRO:C	1:B:1270:LEU:N	2.65	0.49
1:D:3197:PRO:HD2	1:D:3245:GLY:HA2	1.94	0.49
1:C:2200:GLY:HA2	1:C:2241:ILE:HG22	1.94	0.49
1:A:252:ASN:HB3	1:A:255:ASP:HB2	1.95	0.49
1:B:1290:ARG:HD3	1:B:1309:TYR:CZ	2.48	0.49
1:D:3213:PHE:HA	1:D:3229:ILE:O	2.13	0.49
1:A:83:ASN:HA	1:A:86:ASN:ND2	2.28	0.48
1:B:1147:TRP:NE1	1:B:1151:ARG:HD3	2.28	0.48
1:C:2162:ARG:NH2	1:C:2169:GLU:OE2	2.45	0.48
1:D:3081:SER:OG	1:D:3082:PRO:HD2	2.13	0.48
1:D:3181:CYS:SG	1:D:3308:ASN:HB3	2.53	0.48
1:B:1036:ALA:O	1:B:1161:GLN:HA	2.13	0.48
1:C:2298:THR:CB	1:C:2302:ASN:HA	2.35	0.48
3:D:3352:MH6:OG	3:D:3352:MH6:CA	2.55	0.48
1:A:115:ARG:NH1	1:B:1113:GLY:HA3	2.29	0.48
1:B:1139:LEU:HD21	1:B:1144:TYR:CE2	2.48	0.48
1:B:1202:ILE:HG22	1:B:1239:GLY:HA3	1.96	0.48
1:C:2210:MET:CE	1:C:2210:MET:HA	2.43	0.48
1:C:2045:THR:HG21	1:C:2145:LEU:CD1	2.44	0.48
1:D:3214:ILE:HG21	1:D:3266:LEU:HD22	1.95	0.48
1:A:279:ARG:HD2	1:D:3041:PRO:CB	2.44	0.48
1:A:127:ASP:OD1	1:A:265:ARG:HD2	2.14	0.48
1:D:3187:GLY:O	1:D:3189:LEU:N	2.47	0.48
1:A:135:THR:HG23	1:B:1212:HIS:HE1	1.78	0.48
1:C:2027:LEU:HB2	1:C:2030:LEU:HB2	1.95	0.48
1:C:2035:TYR:CD2	1:C:2162:ARG:HD3	2.49	0.48
1:D:3147:TRP:CD2	1:D:3151:ARG:HD3	2.49	0.48
1:D:3199:ARG:NH2	1:D:3201:GLN:HE21	2.12	0.48
1:C:2015:THR:HG22	1:C:2019:ILE:HD12	1.96	0.47
1:C:2093:SER:OG	1:C:2135:THR:HG23	2.14	0.47
1:C:2055:TYR:CE1	1:C:2314:TYR:HD1	2.32	0.47
1:D:3228:TYR:CZ	1:D:3239:GLY:HA3	2.49	0.47
1:C:2021:GLU:HG3	1:C:2022:ARG:N	2.28	0.47
1:C:2209:TRP:O	1:C:2211:LYS:HG2	2.13	0.47
1:C:2242:PHE:HA	1:C:2283:ARG:HH12	1.79	0.47
1:C:2010:VAL:HG11	1:C:2316:LEU:HD22	1.95	0.47
1:A:286:ARG:O	1:A:288:GLN:N	2.48	0.47
1:A:28:GLN:HB3	1:A:29:PRO:HD3	1.97	0.47
1:A:78:HIS:HA	1:A:81:SER:OG	2.13	0.47
1:B:1209:TRP:O	1:B:1211:LYS:HG2	2.14	0.47

Continued on next page...

Continued from previous page...

Atom-1	Atom-2	Interatomic distance (Å)	Clash overlap (Å)
1:C:2201:GLN:HE22	1:C:2252:ASN:N	2.11	0.47
1:A:94:GLY:HA2	1:A:212:HIS:HB3	1.97	0.47
1:B:1233:THR:CG2	1:B:1234:GLN:H	2.26	0.47
1:D:3151:ARG:NH1	1:D:3154:GLU:OE2	2.48	0.47
1:D:3316:LEU:H	1:D:3316:LEU:HD22	1.80	0.47
1:A:264:CYS:HB3	1:A:271:LYS:HG3	1.97	0.47
1:B:1002:ARG:O	1:B:1176:ASP:HB2	2.15	0.47
1:C:2028:GLN:HG3	1:C:2029:PRO:CD	2.44	0.47
1:A:242:PHE:HE1	1:A:244:LEU:HG	1.80	0.47
1:B:1042:LEU:CD2	1:C:2042:LEU:HD22	2.45	0.47
1:D:3297:ARG:HH21	1:D:3297:ARG:HB2	1.80	0.47
1:D:3307:HIS:CD2	1:D:3309:TYR:HE2	2.33	0.47
1:C:2120:ARG:HA	1:C:2123:ASP:OD2	2.14	0.47
1:A:291:LEU:HA	1:A:307:HIS:O	2.14	0.46
1:B:1039:PHE:O	1:B:1041:PRO:HD2	2.15	0.46
1:D:3335:GLU:HG3	1:D:3336:GLU:N	2.30	0.46
1:A:315:GLY:HA3	2:A:351:FAD:H4'	1.97	0.46
1:B:1010:VAL:HG13	1:B:1011:ILE:N	2.30	0.46
1:C:2105:PRO:HG3	1:C:2132:TRP:CH2	2.50	0.46
1:B:1197:PRO:HG3	1:B:1247:TRP:CE2	2.50	0.46
1:B:1194:LEU:O	1:B:1286:ARG:HG3	2.16	0.46
1:B:1291:LEU:HA	1:B:1307:HIS:O	2.15	0.46
1:D:3270:LEU:O	1:D:3273:ALA:HB3	2.15	0.46
1:B:1205:VAL:HA	1:B:1274:ARG:O	2.16	0.46
1:B:1016:ALA:HB3	1:B:1152:LEU:HD21	1.98	0.46
1:B:1040:THR:HG23	1:B:1041:PRO:CD	2.35	0.46
1:C:2105:PRO:HB3	1:C:2107:TRP:CE2	2.51	0.46
1:C:2199:ARG:NH1	1:C:2255:ASP:OD2	2.49	0.46
1:D:3202:ILE:HG23	2:D:3351:FAD:HM72	1.97	0.46
1:B:1106:SER:C	1:B:1108:LYS:H	2.17	0.46
1:C:2013:LEU:HD22	1:C:2152:LEU:HD23	1.97	0.46
1:C:2214:ILE:O	1:C:2214:ILE:HG22	2.14	0.46
2:C:2351:FAD:H9	2:C:2351:FAD:H1'1	1.58	0.46
1:D:3239:GLY:HA2	1:D:3259:ILE:HD12	1.97	0.46
2:D:3351:FAD:O4'	2:D:3351:FAD:C5'	2.60	0.46
1:C:2215:LEU:HD22	1:C:2228:TYR:HB2	1.97	0.46
1:B:1191:ARG:HH22	1:B:1193:PRO:HB3	1.81	0.46
1:D:3179:VAL:HG13	1:D:3306:ILE:HB	1.98	0.46
1:C:2050:GLY:O	1:C:2138:ILE:HA	2.16	0.46
1:D:3118:THR:OG1	1:D:3121:GLU:HG2	2.15	0.46
2:D:3351:FAD:H9	2:D:3351:FAD:H1'1	1.66	0.46

Continued on next page...

Continued from previous page...

Atom-1	Atom-2	Interatomic distance (Å)	Clash overlap (Å)
1:B:1238:LEU:HD11	1:B:1270:LEU:HD21	1.98	0.45
1:B:1286:ARG:HG2	1:B:1287:PRO:HD2	1.98	0.45
1:D:3027:LEU:HD11	1:D:3334:LEU:CG	2.41	0.45
1:D:3045:THR:HG21	1:D:3145:LEU:HD13	1.98	0.45
1:A:325:GLU:OE2	1:A:328:LYS:HD3	2.15	0.45
1:B:1231:PRO:HA	1:B:1236:VAL:HA	1.97	0.45
1:B:1224:TYR:HE2	1:B:1313:GLY:HA3	1.79	0.45
1:C:2115:ARG:HD2	1:C:2116:LYS:O	2.17	0.45
1:C:2161:GLN:HB3	1:C:2161:GLN:HE21	1.63	0.45
1:C:2199:ARG:HB3	1:C:2243:GLN:HB2	1.99	0.45
1:D:3072:PHE:HZ	1:D:3112:LEU:HD22	1.81	0.45
1:B:1170:VAL:HG12	1:B:1175:ALA:HB2	1.98	0.45
1:D:3005:VAL:HB	1:D:3034:VAL:HG22	1.98	0.45
1:A:199:ARG:NH2	1:A:250:LEU:O	2.50	0.45
1:A:214:ILE:O	1:A:228:TYR:HA	2.17	0.45
1:C:2290:ARG:N	1:C:2309:TYR:O	2.45	0.45
1:D:3040:THR:HG23	1:D:3041:PRO:HD3	1.99	0.45
1:D:3095:TYR:CD2	1:D:3117:LEU:HD21	2.52	0.45
1:B:1170:VAL:HA	1:B:1173:GLU:HG2	1.99	0.45
1:B:1092:ILE:HG13	1:B:1213:PHE:HD2	1.82	0.45
1:D:3115:ARG:NH2	1:D:3121:GLU:OE2	2.50	0.45
1:B:1296:LEU:HD23	1:B:1305:VAL:HG21	1.98	0.45
1:B:1011:ILE:HG12	2:B:1351:FAD:O5'	2.17	0.45
1:A:194:LEU:HD22	1:A:287:PRO:HG2	1.99	0.45
1:A:67:TRP:HB3	1:A:321:GLY:HA3	1.99	0.45
1:A:79:VAL:HA	1:A:89:LEU:HD13	1.99	0.45
1:C:2283:ARG:O	1:C:2285:VAL:N	2.50	0.45
1:A:45:THR:HG21	1:A:145:LEU:HD11	1.98	0.45
1:B:1325:GLU:O	1:B:1328:LYS:CB	2.65	0.45
1:C:2016:ALA:HB3	1:C:2152:LEU:HD21	1.99	0.45
1:C:2216:THR:HG23	1:C:2227:PRO:O	2.16	0.45
1:A:167:PHE:CB	1:A:296:LEU:HD21	2.46	0.44
1:B:1041:PRO:HG2	1:B:1042:LEU:HG	1.99	0.44
1:B:1104:ASP:HB3	1:B:1105:PRO:HD3	1.99	0.44
1:B:1283:ARG:O	1:B:1285:VAL:N	2.49	0.44
1:D:3090:PHE:CE1	1:D:3233:THR:HG22	2.52	0.44
2:D:3351:FAD:N1	2:D:3351:FAD:H2'	2.32	0.44
1:A:270:LEU:O	1:A:272:ASN:N	2.50	0.44
1:C:2221:ARG:HH11	1:C:2225:ASN:ND2	2.16	0.44
1:C:2242:PHE:HZ	1:C:2285:VAL:HG21	1.82	0.44
1:C:2256:HIS:ND1	1:C:2278:GLU:OE1	2.48	0.44

Continued on next page...

Continued from previous page...

Atom-1	Atom-2	Interatomic distance (Å)	Clash overlap (Å)
1:C:2252:ASN:ND2	1:C:2255:ASP:H	2.16	0.44
1:D:3076:LEU:HG	1:D:3076:LEU:O	2.17	0.44
1:D:3209:TRP:HE1	1:D:3269:THR:HG1	1.65	0.44
1:B:1010:VAL:HG21	1:B:1316:LEU:HD13	1.98	0.44
1:C:2117:LEU:CD2	1:C:2133:PHE:HB2	2.47	0.44
1:C:2228:TYR:CD1	1:C:2228:TYR:C	2.91	0.44
1:C:2120:ARG:NH2	1:D:3110:THR:O	2.48	0.44
1:D:3168:GLU:O	1:D:3170:VAL:N	2.50	0.44
1:A:36:ALA:HB3	1:A:39:PHE:CZ	2.52	0.44
1:B:1053:GLN:NE2	1:B:1215:LEU:HD12	2.32	0.44
1:D:3228:TYR:CE1	1:D:3239:GLY:HA3	2.53	0.44
1:D:3177:VAL:HG22	1:D:3304:GLU:HB2	2.00	0.44
1:D:3055:TYR:CE2	1:D:3314:TYR:HE1	2.35	0.44
1:B:1161:GLN:HE21	1:C:2249:GLU:H	1.66	0.44
1:A:223:ILE:HG13	1:A:224:TYR:N	2.33	0.44
1:A:5:VAL:HB	1:A:34:VAL:HG22	2.00	0.44
1:C:2067:TRP:HB2	1:C:2318:ILE:HD11	1.99	0.44
1:B:1017:LEU:HA	1:B:1152:LEU:HD11	1.99	0.43
1:D:3291:LEU:CD1	1:D:3325:GLU:HG3	2.48	0.43
1:C:2052:TRP:CD1	1:C:2317:THR:HG23	2.53	0.43
1:B:1192:ASP:HA	1:B:1193:PRO:HD3	1.81	0.43
1:D:3264:CYS:HB3	1:D:3271:LYS:HD2	2.00	0.43
1:C:2201:GLN:NE2	1:C:2252:ASN:N	2.65	0.43
1:B:1076:LEU:HB2	1:B:1137:LEU:HD11	2.00	0.43
1:A:161:GLN:HB3	1:A:161:GLN:HE21	1.51	0.43
1:A:189:LEU:HD11	2:A:351:FAD:N6A	2.31	0.43
1:A:197:PRO:HG3	1:A:247:TRP:CZ2	2.53	0.43
1:C:2098:PHE:HD2	1:C:2131:GLY:HA2	1.83	0.43
1:C:2238:LEU:HB3	1:C:2259:ILE:CG2	2.48	0.43
1:D:3040:THR:CG2	1:D:3041:PRO:HD3	2.49	0.43
1:D:3061:ASN:OD1	1:D:3063:GLN:HB2	2.18	0.43
1:D:3279:ARG:HH11	1:D:3279:ARG:HG3	1.84	0.43
1:B:1026:VAL:O	1:B:1027:LEU:HB2	2.19	0.43
1:C:2020:HIS:CE1	1:C:2155:ARG:HE	2.37	0.43
1:C:2178:ILE:HB	1:C:2305:VAL:HG22	2.00	0.43
1:D:3136:SER:OG	1:D:3137:LEU:N	2.52	0.43
1:B:1032:ILE:HB	1:B:1157:VAL:HG22	2.01	0.42
1:C:2087:LEU:HD23	1:C:2139:LEU:CD1	2.48	0.42
1:C:2257:ASN:O	1:C:2261:GLU:HB2	2.19	0.42
1:D:3187:GLY:HA2	1:D:3191:ARG:HA	2.01	0.42
1:B:1231:PRO:HB3	1:B:1236:VAL:HG22	2.01	0.42

Continued on next page...

Continued from previous page...

Atom-1	Atom-2	Interatomic distance (Å)	Clash overlap (Å)
1:C:2041:PRO:HB2	1:C:2042:LEU:HD23	2.02	0.42
1:C:2048:ALA:HB2	2:C:2351:FAD:O2'	2.20	0.42
1:D:3167:PHE:HB2	1:D:3296:LEU:HD21	2.02	0.42
1:A:15:THR:HG23	1:A:326:ALA:HB3	2.01	0.42
1:B:1249:GLU:H	1:C:2161:GLN:NE2	2.16	0.42
1:B:1231:PRO:HA	1:B:1236:VAL:HG22	2.01	0.42
1:C:2180:ASN:HB3	1:C:2307:HIS:CD2	2.54	0.42
1:A:242:PHE:HZ	1:A:285:VAL:HG21	1.85	0.42
1:A:144:TYR:CE2	1:A:319:HIS:CE1	3.08	0.42
1:A:27:LEU:HD21	1:A:334:LEU:HD21	2.01	0.42
1:C:2028:GLN:N	1:C:2029:PRO:CD	2.83	0.42
1:A:218:ASP:O	1:A:220:GLU:N	2.53	0.42
1:B:1067:TRP:HB2	1:B:1318:ILE:HD11	2.00	0.42
1:D:3144:TYR:CE2	1:D:3319:HIS:CE1	3.08	0.42
1:D:3161:GLN:HB3	1:D:3161:GLN:HE21	1.68	0.42
1:B:1304:GLU:HG2	4:B:24:HOH:O	2.20	0.42
1:C:2286:ARG:O	1:C:2287:PRO:C	2.57	0.42
1:D:3117:LEU:HD12	1:D:3131:GLY:HA3	2.02	0.42
1:A:136:SER:O	1:A:137:LEU:HD23	2.20	0.42
1:A:52:TRP:HE3	1:A:52:TRP:O	2.02	0.42
1:C:2252:ASN:ND2	1:C:2254:GLN:HB3	2.29	0.42
1:D:3291:LEU:HA	1:D:3307:HIS:O	2.20	0.42
1:B:1231:PRO:HA	1:B:1236:VAL:HG13	2.01	0.42
1:A:199:ARG:HB3	1:A:246:ASN:HB3	2.02	0.41
1:B:1316:LEU:O	1:B:1319:HIS:HD2	2.02	0.41
1:C:2298:THR:CG2	1:C:2299:GLY:N	2.82	0.41
1:D:3032:ILE:O	1:D:3157:VAL:HA	2.18	0.41
1:D:3325:GLU:O	1:D:3328:LYS:HB3	2.19	0.41
1:C:2102:ILE:HD13	4:C:31:HOH:O	2.20	0.41
1:D:3195:LEU:HA	1:D:3286:ARG:HG3	2.01	0.41
1:D:3286:ARG:O	1:D:3287:PRO:C	2.57	0.41
1:A:102:ILE:HG23	4:A:356:HOH:O	2.19	0.41
1:A:242:PHE:CZ	1:A:285:VAL:HG21	2.55	0.41
1:C:2289:ILE:N	4:C:2:HOH:O	2.53	0.41
1:B:1252:ASN:HD21	1:B:1254:GLN:HB3	1.85	0.41
1:C:2184:VAL:HG22	1:C:2247:TRP:CH2	2.56	0.41
1:C:2296:LEU:O	1:C:2302:ASN:HB2	2.20	0.41
1:D:3291:LEU:HD12	1:D:3325:GLU:HG3	2.02	0.41
1:A:118:THR:HB	1:A:119:PRO:HD2	2.01	0.41
1:C:2058:ASP:HA	1:C:2059:PRO:HD3	1.93	0.41
1:C:2117:LEU:HD23	1:C:2133:PHE:HB2	2.01	0.41

Continued on next page...

Continued from previous page...

Atom-1	Atom-2	Interatomic distance (Å)	Clash overlap (Å)
1:D:3010:VAL:HG21	1:D:3316:LEU:CD1	2.43	0.41
1:A:35:TYR:HA	1:A:160:PHE:O	2.19	0.41
1:B:1286:ARG:NH1	1:B:1290:ARG:HB2	2.35	0.41
1:B:1320:TRP:O	1:B:1323:ALA:N	2.54	0.41
1:C:2267:GLU:O	1:C:2270:LEU:HB2	2.19	0.41
1:A:47:VAL:HG22	1:A:279:ARG:HB3	2.03	0.41
1:B:1169:GLU:HG3	4:B:17:HOH:O	2.21	0.41
1:B:1325:GLU:O	1:B:1328:LYS:N	2.54	0.41
2:B:1351:FAD:H9	2:B:1351:FAD:H1'1	1.51	0.41
1:C:2241:ILE:HD13	1:C:2259:ILE:CD1	2.51	0.41
1:A:316:LEU:HB2	2:A:351:FAD:O2	2.20	0.41
1:B:1283:ARG:HD3	1:B:1313:GLY:HA2	2.02	0.41
1:C:2022:ARG:HD3	4:C:41:HOH:O	2.21	0.41
1:C:2027:LEU:HD22	1:C:2030:LEU:HD12	2.03	0.41
1:C:2180:ASN:HB3	1:C:2307:HIS:HD2	1.86	0.41
2:D:3351:FAD:C2'	2:D:3351:FAD:N1	2.84	0.41
1:A:144:TYR:HE2	1:A:319:HIS:CE1	2.38	0.41
1:C:2094:GLY:HA2	1:C:2212:HIS:HB3	2.02	0.41
1:D:3314:TYR:O	1:D:3318:ILE:HG22	2.21	0.41
1:A:192:ASP:OD2	1:A:286:ARG:NH1	2.53	0.40
1:B:1320:TRP:O	1:B:1322:CYS:N	2.55	0.40
1:B:1161:GLN:NE2	1:C:2249:GLU:H	2.18	0.40
1:A:249:GLU:HB2	1:A:282:PHE:HZ	1.85	0.40
1:A:257:ASN:O	1:A:261:GLU:HB2	2.21	0.40
1:A:270:LEU:C	1:A:272:ASN:N	2.74	0.40
1:B:1042:LEU:HD23	1:C:2042:LEU:HD22	2.01	0.40
1:B:1152:LEU:HD12	1:B:1152:LEU:HA	1.77	0.40
1:C:2180:ASN:ND2	1:C:2307:HIS:HD2	2.18	0.40
1:A:249:GLU:HB2	1:A:282:PHE:CZ	2.56	0.40
1:B:1018:CYS:SG	1:B:1324:LEU:HA	2.61	0.40
1:B:1290:ARG:HD3	1:B:1309:TYR:OH	2.22	0.40
1:C:2192:ASP:HA	1:C:2193:PRO:HD3	1.98	0.40
1:D:3144:TYR:CE2	1:D:3148:LEU:HD11	2.56	0.40
1:D:3270:LEU:HD12	1:D:3270:LEU:HA	1.96	0.40
1:D:3338:LYS:HE2	1:D:3338:LYS:HB2	1.86	0.40
1:A:17:LEU:HG	1:A:17:LEU:O	2.21	0.40
1:A:314:TYR:CD1	1:A:314:TYR:N	2.89	0.40
2:A:351:FAD:H9	2:A:351:FAD:H1'1	1.49	0.40
1:B:1140:GLU:OE2	1:B:1233:THR:HG22	2.21	0.40

There are no symmetry-related clashes.

5.3 Torsion angles

5.3.1 Protein backbone

In the following table, the Percentiles column shows the percent Ramachandran outliers of the chain as a percentile score with respect to all X-ray entries followed by that with respect to entries of similar resolution.

The Analysed column shows the number of residues for which the backbone conformation was analysed, and the total number of residues.

Mol	Chain	Analysed	Favoured	Allowed	Outliers	Percentiles	
1	A	338/347 (97%)	284 (84%)	43 (13%)	11 (3%)	4	25
1	B	338/347 (97%)	274 (81%)	51 (15%)	13 (4%)	3	22
1	C	338/347 (97%)	289 (86%)	36 (11%)	13 (4%)	3	22
1	D	338/347 (97%)	278 (82%)	49 (14%)	11 (3%)	4	25
All	All	1352/1388 (97%)	1125 (83%)	179 (13%)	48 (4%)	3	23

All (48) Ramachandran outliers are listed below:

Mol	Chain	Res	Type
1	A	40	THR
1	A	224	TYR
1	B	1040	THR
1	B	1300	PRO
1	C	2040	THR
1	D	3157	VAL
1	A	54	PRO
1	A	105	PRO
1	A	240	GLY
1	A	312	GLY
1	B	1105	PRO
1	C	2113	GLY
1	C	2299	GLY
1	C	2315	GLY
1	D	3027	LEU
1	D	3169	GLU
1	D	3188	ALA
1	A	191	ARG
1	A	219	PRO
1	A	271	LYS
1	A	300	PRO
1	B	1172	ARG

Continued on next page...

Continued from previous page...

Mol	Chain	Res	Type
1	B	1191	ARG
1	B	1240	GLY
1	C	2300	PRO
1	C	2338	LYS
1	D	3108	LYS
1	D	3221	ARG
1	B	1224	TYR
1	C	2129	GLY
1	D	3300	PRO
1	B	1027	LEU
1	B	1104	ASP
1	B	1321	GLY
1	C	2029	PRO
1	C	2056	LEU
1	D	3260	TRP
1	D	3339	LEU
1	A	287	PRO
1	B	1029	PRO
1	C	2312	GLY
1	C	2240	GLY
1	C	2284	PRO
1	D	3026	VAL
1	D	3240	GLY
1	C	2223	ILE
1	B	1284	PRO
1	B	1289	ILE

5.3.2 Protein sidechains ⓘ

In the following table, the Percentiles column shows the percent sidechain outliers of the chain as a percentile score with respect to all X-ray entries followed by that with respect to entries of similar resolution.

The Analysed column shows the number of residues for which the sidechain conformation was analysed, and the total number of residues.

Mol	Chain	Analysed	Rotameric	Outliers	Percentiles	
1	A	292/299 (98%)	261 (89%)	31 (11%)	6	27
1	B	292/299 (98%)	269 (92%)	23 (8%)	12	43
1	C	292/299 (98%)	270 (92%)	22 (8%)	13	45
1	D	292/299 (98%)	256 (88%)	36 (12%)	4	21

Continued on next page...

Continued from previous page...

Mol	Chain	Analysed	Rotameric	Outliers	Percentiles	
All	All	1168/1196 (98%)	1056 (90%)	112 (10%)	8	32

All (112) residues with a non-rotameric sidechain are listed below:

Mol	Chain	Res	Type
1	A	2	ARG
1	A	6	ILE
1	A	17	LEU
1	A	26	VAL
1	A	30	LEU
1	A	31	ASP
1	A	40	THR
1	A	45	THR
1	A	58	ASP
1	A	89	LEU
1	A	91	LEU
1	A	92	ILE
1	A	102	ILE
1	A	151	ARG
1	A	152	LEU
1	A	161	GLN
1	A	176	ASP
1	A	179	VAL
1	A	190	GLN
1	A	191	ARG
1	A	219	PRO
1	A	221	ARG
1	A	238	LEU
1	A	241	ILE
1	A	250	LEU
1	A	254	GLN
1	A	274	ARG
1	A	288	GLN
1	A	298	THR
1	A	334	LEU
1	A	335	GLU
1	B	1024	HIS
1	B	1031	ASP
1	B	1044	THR
1	B	1060	ASN
1	B	1068	SER
1	B	1069	GLN

Continued on next page...

Continued from previous page...

Mol	Chain	Res	Type
1	B	1099	HIS
1	B	1102	ILE
1	B	1107	TRP
1	B	1115	ARG
1	B	1146	GLN
1	B	1151	ARG
1	B	1152	LEU
1	B	1166	SER
1	B	1210	MET
1	B	1215	LEU
1	B	1238	LEU
1	B	1258	THR
1	B	1266	LEU
1	B	1274	ARG
1	B	1288	GLN
1	B	1332	ARG
1	B	1337	LYS
1	C	2028	GLN
1	C	2058	ASP
1	C	2080	HIS
1	C	2087	LEU
1	C	2089	LEU
1	C	2106	SER
1	C	2108	LYS
1	C	2112	LEU
1	C	2115	ARG
1	C	2151	ARG
1	C	2152	LEU
1	C	2161	GLN
1	C	2191	ARG
1	C	2210	MET
1	C	2226	SER
1	C	2237	THR
1	C	2244	LEU
1	C	2258	THR
1	C	2266	LEU
1	C	2274	ARG
1	C	2292	GLU
1	C	2295	GLN
1	D	3001	MET
1	D	3024	HIS
1	D	3027	LEU

Continued on next page...

Continued from previous page...

Mol	Chain	Res	Type
1	D	3028	GLN
1	D	3033	LYS
1	D	3042	LEU
1	D	3056	LEU
1	D	3060	ASN
1	D	3068	SER
1	D	3080	HIS
1	D	3083	ASN
1	D	3107	TRP
1	D	3112	LEU
1	D	3115	ARG
1	D	3117	LEU
1	D	3120	ARG
1	D	3143	ASN
1	D	3151	ARG
1	D	3161	GLN
1	D	3176	ASP
1	D	3179	VAL
1	D	3191	ARG
1	D	3210	MET
1	D	3221	ARG
1	D	3233	THR
1	D	3266	LEU
1	D	3270	LEU
1	D	3274	ARG
1	D	3291	LEU
1	D	3297	ARG
1	D	3332	ARG
1	D	3334	LEU
1	D	3335	GLU
1	D	3337	LYS
1	D	3338	LYS
1	D	3339	LEU

Some sidechains can be flipped to improve hydrogen bonding and reduce clashes. All (53) such sidechains are listed below:

Mol	Chain	Res	Type
1	A	53	GLN
1	A	69	GLN
1	A	86	ASN
1	A	96	ASN
1	A	134	HIS

Continued on next page...

Continued from previous page...

Mol	Chain	Res	Type
1	A	161	GLN
1	A	201	GLN
1	A	225	ASN
1	A	243	GLN
1	A	252	ASN
1	A	288	GLN
1	A	302	ASN
1	A	307	HIS
1	A	319	HIS
1	B	1053	GLN
1	B	1063	GLN
1	B	1069	GLN
1	B	1134	HIS
1	B	1161	GLN
1	B	1190	GLN
1	B	1196	GLN
1	B	1201	GLN
1	B	1212	HIS
1	B	1243	GLN
1	B	1252	ASN
1	B	1288	GLN
1	B	1302	ASN
1	B	1307	HIS
1	B	1311	HIS
1	B	1319	HIS
1	C	2134	HIS
1	C	2161	GLN
1	C	2201	GLN
1	C	2225	ASN
1	C	2234	GLN
1	C	2243	GLN
1	C	2252	ASN
1	C	2272	ASN
1	C	2307	HIS
1	C	2319	HIS
1	D	3028	GLN
1	D	3053	GLN
1	D	3060	ASN
1	D	3146	GLN
1	D	3161	GLN
1	D	3196	GLN
1	D	3201	GLN

Continued on next page...

Continued from previous page...

Mol	Chain	Res	Type
1	D	3225	ASN
1	D	3243	GLN
1	D	3252	ASN
1	D	3288	GLN
1	D	3307	HIS
1	D	3319	HIS

5.3.3 RNA ⓘ

There are no RNA molecules in this entry.

5.4 Non-standard residues in protein, DNA, RNA chains ⓘ

There are no non-standard protein/DNA/RNA residues in this entry.

5.5 Carbohydrates ⓘ

There are no carbohydrates in this entry.

5.6 Ligand geometry ⓘ

8 ligands are modelled in this entry.

In the following table, the Counts columns list the number of bonds (or angles) for which Mogul statistics could be retrieved, the number of bonds (or angles) that are observed in the model and the number of bonds (or angles) that are defined in the Chemical Component Dictionary. The Link column lists molecule types, if any, to which the group is linked. The Z score for a bond length (or angle) is the number of standard deviations the observed value is removed from the expected value. A bond length (or angle) with $|Z| > 2$ is considered an outlier worth inspection. RMSZ is the root-mean-square of all Z scores of the bond lengths (or angles).

Mol	Type	Chain	Res	Link	Bond lengths			Bond angles		
					Counts	RMSZ	$\# Z > 2$	Counts	RMSZ	$\# Z > 2$
3	MH6	B	1352	-	4,6,6	1.60	1 (25%)	1,7,7	0.91	0
3	MH6	C	2352	-	4,6,6	2.08	2 (50%)	1,7,7	5.42	1 (100%)
2	FAD	B	1351	-	51,58,58	3.61	5 (9%)	60,89,89	2.72	16 (26%)
3	MH6	A	352	-	4,6,6	1.18	0	1,7,7	3.39	1 (100%)
3	MH6	D	3352	-	4,6,6	7.64	4 (100%)	1,7,7	9.49	1 (100%)
2	FAD	C	2351	-	51,58,58	2.35	8 (15%)	60,89,89	2.84	21 (35%)

Mol	Type	Chain	Res	Link	Bond lengths			Bond angles		
					Counts	RMSZ	# Z > 2	Counts	RMSZ	# Z > 2
2	FAD	D	3351	-	51,58,58	4.57	9 (17%)	60,89,89	2.97	17 (28%)
2	FAD	A	351	-	51,58,58	2.88	8 (15%)	60,89,89	2.84	21 (35%)

In the following table, the Chirals column lists the number of chiral outliers, the number of chiral centers analysed, the number of these observed in the model and the number defined in the Chemical Component Dictionary. Similar counts are reported in the Torsion and Rings columns. '-' means no outliers of that kind were identified.

Mol	Type	Chain	Res	Link	Chirals	Torsions	Rings
3	MH6	B	1352	-	-	1/1/6/6	-
3	MH6	C	2352	-	-	1/1/6/6	-
2	FAD	B	1351	-	-	6/30/50/50	0/6/6/6
3	MH6	A	352	-	-	1/1/6/6	-
3	MH6	D	3352	-	-	1/1/6/6	-
2	FAD	C	2351	-	-	5/30/50/50	0/6/6/6
2	FAD	D	3351	-	-	5/30/50/50	0/6/6/6
2	FAD	A	351	-	-	5/30/50/50	0/6/6/6

All (37) bond length outliers are listed below:

Mol	Chain	Res	Type	Atoms	Z	Observed(Å)	Ideal(Å)
2	D	3351	FAD	C5'-C4'	29.19	1.93	1.51
2	B	1351	FAD	C5'-C4'	19.78	1.79	1.51
2	A	351	FAD	C5'-C4'	12.48	1.69	1.51
2	B	1351	FAD	C4X-C10	10.61	1.49	1.38
2	B	1351	FAD	O4'-C4'	10.52	1.65	1.43
2	D	3351	FAD	C4X-C10	10.27	1.49	1.38
2	A	351	FAD	C4X-C10	10.24	1.49	1.38
2	C	2351	FAD	C4X-C10	10.18	1.49	1.38
3	D	3352	MH6	CB-CA	9.85	1.65	1.50
3	D	3352	MH6	OG-CB	8.92	1.72	1.41
2	A	351	FAD	O4'-C4'	8.52	1.61	1.43
2	C	2351	FAD	C5'-C4'	8.20	1.63	1.51
3	D	3352	MH6	CA-N	6.83	1.44	1.27
2	A	351	FAD	C4-C4X	6.10	1.51	1.41
2	C	2351	FAD	O4'-C4'	6.10	1.56	1.43
2	D	3351	FAD	O4'-C4'	5.58	1.55	1.43
2	D	3351	FAD	C4-C4X	4.87	1.49	1.41
2	B	1351	FAD	C4-C4X	4.23	1.48	1.41
2	C	2351	FAD	C4-C4X	4.18	1.48	1.41
3	D	3352	MH6	C-CA	-3.22	1.47	1.52

Continued on next page...

Continued from previous page...

Mol	Chain	Res	Type	Atoms	Z	Observed(Å)	Ideal(Å)
2	C	2351	FAD	P-O1P	3.09	1.61	1.50
2	C	2351	FAD	O4B-C1B	2.97	1.45	1.41
2	C	2351	FAD	O5'-C5'	2.96	1.56	1.44
2	D	3351	FAD	O4B-C1B	2.94	1.45	1.41
3	C	2352	MH6	OG-CB	2.91	1.51	1.41
3	B	1352	MH6	C-CA	-2.72	1.48	1.52
2	A	351	FAD	C9A-N10	-2.70	1.34	1.38
2	B	1351	FAD	C9A-N10	-2.58	1.35	1.38
2	D	3351	FAD	P-O1P	2.52	1.59	1.50
2	A	351	FAD	P-O1P	2.51	1.59	1.50
2	D	3351	FAD	C10-N1	2.44	1.36	1.33
2	D	3351	FAD	O5'-C5'	2.23	1.53	1.44
2	C	2351	FAD	C9A-N10	-2.22	1.35	1.38
2	A	351	FAD	C10-N1	2.18	1.36	1.33
3	C	2352	MH6	CB-CA	2.18	1.53	1.50
2	A	351	FAD	O4B-C1B	2.08	1.44	1.41
2	D	3351	FAD	C2A-N3A	2.07	1.35	1.32

All (78) bond angle outliers are listed below:

Mol	Chain	Res	Type	Atoms	Z	Observed(°)	Ideal(°)
2	C	2351	FAD	P-O3P-PA	-9.80	99.20	132.83
3	D	3352	MH6	OG-CB-CA	-9.49	98.66	111.51
2	D	3351	FAD	P-O3P-PA	-9.47	100.34	132.83
2	B	1351	FAD	P-O3P-PA	-8.87	102.38	132.83
2	D	3351	FAD	C4-N3-C2	8.67	122.46	115.14
2	B	1351	FAD	C4-N3-C2	8.49	122.31	115.14
2	A	351	FAD	P-O3P-PA	-8.42	103.93	132.83
2	C	2351	FAD	C4-N3-C2	8.40	122.23	115.14
2	A	351	FAD	C4-N3-C2	8.12	122.00	115.14
2	C	2351	FAD	C1'-N10-C10	7.69	125.30	118.41
2	A	351	FAD	C1'-N10-C10	6.88	124.57	118.41
2	D	3351	FAD	C1'-N10-C10	6.65	124.36	118.41
2	D	3351	FAD	C5'-C4'-C3'	-6.53	99.59	112.20
2	B	1351	FAD	C1'-N10-C10	6.48	124.22	118.41
2	D	3351	FAD	P-O5'-C5'	-6.42	84.03	121.68
2	B	1351	FAD	O4'-C4'-C5'	-6.37	95.60	109.92
2	D	3351	FAD	O4'-C4'-C5'	-6.15	96.09	109.92
2	B	1351	FAD	C5X-C9A-N10	6.02	122.08	117.72
2	A	351	FAD	C10-C4X-N5	-5.54	117.43	121.26
3	C	2352	MH6	OG-CB-CA	-5.42	104.17	111.51
2	C	2351	FAD	P-O5'-C5'	-5.38	90.12	121.68

Continued on next page...

Continued from previous page...

Mol	Chain	Res	Type	Atoms	Z	Observed(°)	Ideal(°)
2	A	351	FAD	N3A-C2A-N1A	-5.31	120.37	128.68
2	D	3351	FAD	O5'-C5'-C4'	-5.27	95.29	109.36
2	C	2351	FAD	N3A-C2A-N1A	-5.21	120.54	128.68
2	A	351	FAD	C4-C4X-N5	5.21	124.55	118.60
2	B	1351	FAD	P-O5'-C5'	-5.16	91.45	121.68
2	C	2351	FAD	C5'-C4'-C3'	-5.13	102.30	112.20
2	B	1351	FAD	N3A-C2A-N1A	-5.07	120.76	128.68
2	B	1351	FAD	C4X-C4-N3	-5.02	116.57	123.43
2	D	3351	FAD	C5X-C9A-N10	4.96	121.31	117.72
2	A	351	FAD	C5'-C4'-C3'	-4.93	102.68	112.20
2	A	351	FAD	C4X-C4-N3	-4.76	116.92	123.43
2	A	351	FAD	P-O5'-C5'	-4.76	93.79	121.68
2	A	351	FAD	C5X-C9A-N10	4.69	121.11	117.72
2	C	2351	FAD	C4X-C4-N3	-4.59	117.15	123.43
2	D	3351	FAD	N3A-C2A-N1A	-4.54	121.58	128.68
2	A	351	FAD	C4X-N5-C5X	4.45	121.22	116.77
2	C	2351	FAD	C5X-C9A-N10	4.21	120.76	117.72
2	B	1351	FAD	C5'-C4'-C3'	-4.17	104.15	112.20
2	D	3351	FAD	C4X-C4-N3	-4.02	117.94	123.43
2	C	2351	FAD	C1'-N10-C9A	-3.96	115.18	118.29
2	D	3351	FAD	C4X-N5-C5X	3.65	120.42	116.77
2	D	3351	FAD	C4-C4X-N5	3.60	122.72	118.60
2	A	351	FAD	C1'-N10-C9A	-3.59	115.47	118.29
2	A	351	FAD	O4'-C4'-C5'	-3.59	101.86	109.92
2	C	2351	FAD	C1B-N9A-C4A	-3.56	120.39	126.64
2	C	2351	FAD	O4'-C4'-C5'	-3.52	102.00	109.92
3	A	352	MH6	OG-CB-CA	-3.39	106.93	111.51
2	D	3351	FAD	O4'-C4'-C3'	-3.29	101.11	109.10
2	D	3351	FAD	C1'-N10-C9A	-3.28	115.71	118.29
2	B	1351	FAD	O5'-C5'-C4'	-3.23	100.74	109.36
2	D	3351	FAD	C4-C4X-C10	-3.19	117.84	119.95
2	C	2351	FAD	O5'-C5'-C4'	-3.11	101.06	109.36
2	C	2351	FAD	C4'-C3'-C2'	-3.07	106.98	113.36
2	C	2351	FAD	O4'-C4'-C3'	-2.97	101.87	109.10
2	A	351	FAD	O4'-C4'-C3'	-2.96	101.89	109.10
2	A	351	FAD	C4-C4X-C10	-2.91	118.02	119.95
2	C	2351	FAD	C5B-C4B-C3B	-2.88	104.41	115.18
2	A	351	FAD	C4'-C3'-C2'	-2.78	107.58	113.36
2	B	1351	FAD	C4'-C3'-C2'	-2.63	107.90	113.36
2	D	3351	FAD	C10-C4X-N5	-2.62	119.44	121.26
2	A	351	FAD	C1B-N9A-C4A	-2.54	122.18	126.64
2	B	1351	FAD	C9A-N10-C10	-2.53	118.59	121.91

Continued on next page...

Continued from previous page...

Mol	Chain	Res	Type	Atoms	Z	Observed(°)	Ideal(°)
2	C	2351	FAD	PA-O5B-C5B	-2.45	107.30	121.68
2	C	2351	FAD	C4-C4X-N5	2.44	121.39	118.60
2	B	1351	FAD	C4-C4X-N5	2.38	121.31	118.60
2	A	351	FAD	C4A-C5A-N7A	-2.35	106.95	109.40
2	C	2351	FAD	C4A-C5A-N7A	-2.33	106.97	109.40
2	A	351	FAD	C5B-C4B-C3B	-2.29	106.59	115.18
2	A	351	FAD	O5'-C5'-C4'	-2.28	103.27	109.36
2	D	3351	FAD	C5B-C4B-C3B	-2.27	106.67	115.18
2	C	2351	FAD	C4X-N5-C5X	2.22	118.99	116.77
2	B	1351	FAD	C5B-C4B-C3B	-2.18	107.00	115.18
2	B	1351	FAD	C4-C4X-C10	-2.14	118.53	119.95
2	C	2351	FAD	C2B-C3B-C4B	2.13	106.78	102.64
2	B	1351	FAD	C1B-N9A-C4A	-2.08	122.99	126.64
2	A	351	FAD	PA-O5B-C5B	-2.07	109.53	121.68
2	C	2351	FAD	C10-C4X-N5	-2.05	119.84	121.26

There are no chirality outliers.

All (25) torsion outliers are listed below:

Mol	Chain	Res	Type	Atoms
3	B	1352	MH6	C-CA-CB-OG
2	B	1351	FAD	C2'-C1'-N10-C9A
2	B	1351	FAD	C2'-C1'-N10-C10
3	A	352	MH6	C-CA-CB-OG
3	D	3352	MH6	C-CA-CB-OG
2	C	2351	FAD	C2'-C1'-N10-C9A
2	C	2351	FAD	C2'-C1'-N10-C10
2	D	3351	FAD	C2'-C1'-N10-C9A
2	D	3351	FAD	C2'-C1'-N10-C10
2	A	351	FAD	C2'-C1'-N10-C9A
2	A	351	FAD	C2'-C1'-N10-C10
2	B	1351	FAD	C3B-C4B-C5B-O5B
2	C	2351	FAD	C3'-C4'-C5'-O5'
2	A	351	FAD	C3B-C4B-C5B-O5B
2	D	3351	FAD	C2'-C3'-C4'-O4'
2	D	3351	FAD	O3'-C3'-C4'-O4'
2	B	1351	FAD	O4B-C4B-C5B-O5B
2	A	351	FAD	O4B-C4B-C5B-O5B
3	C	2352	MH6	C-CA-CB-OG
2	B	1351	FAD	C2'-C3'-C4'-O4'
2	B	1351	FAD	C5B-O5B-PA-O1A
2	C	2351	FAD	C5'-O5'-P-O1P

Continued on next page...

Continued from previous page...

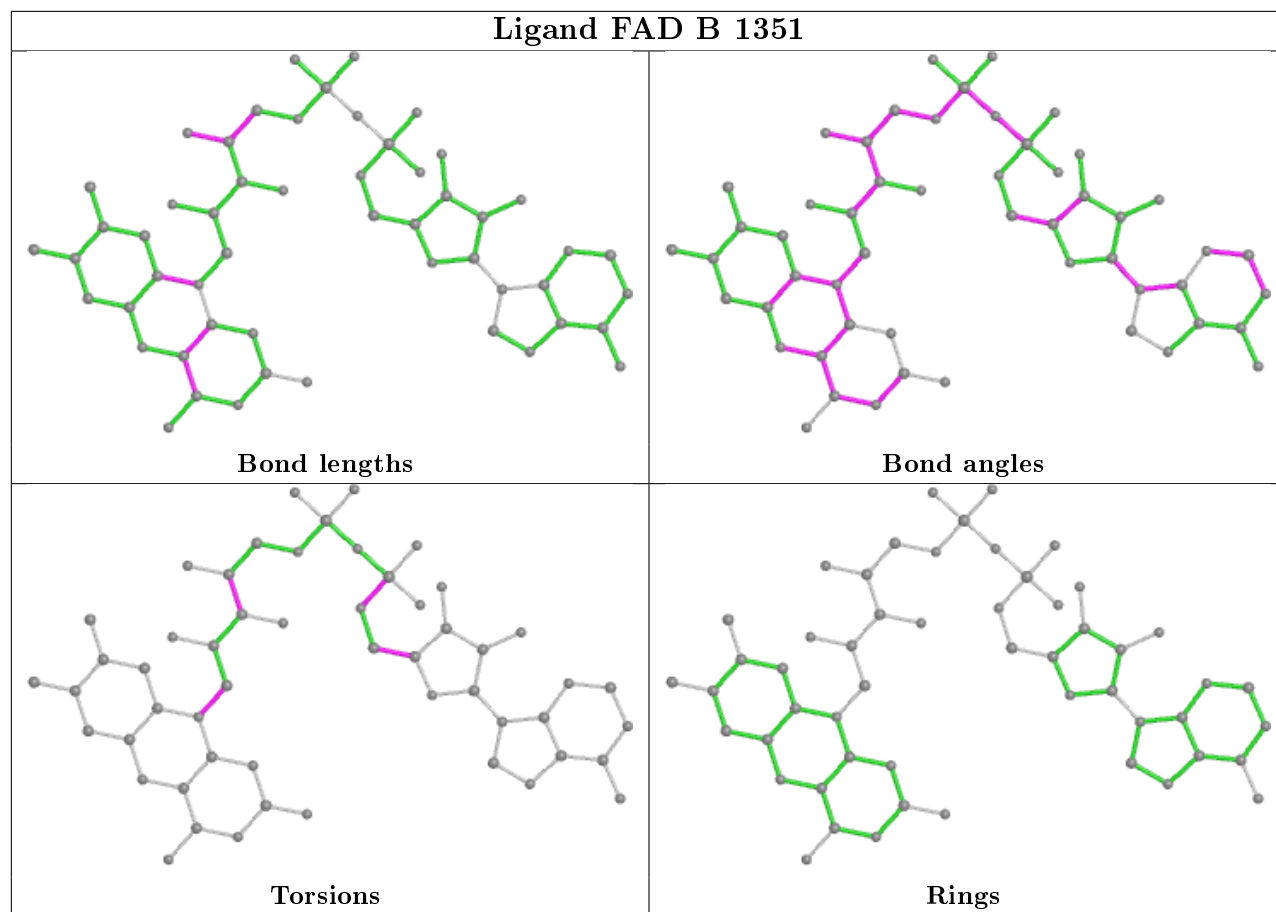
Mol	Chain	Res	Type	Atoms
2	D	3351	FAD	C5'-O5'-P-O1P
2	A	351	FAD	C5'-O5'-P-O1P
2	C	2351	FAD	O4'-C4'-C5'-O5'

There are no ring outliers.

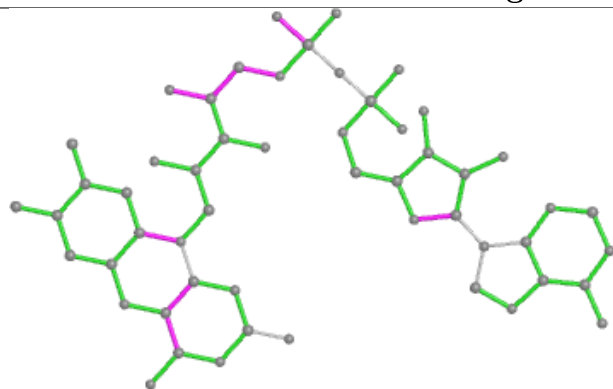
5 monomers are involved in 37 short contacts:

Mol	Chain	Res	Type	Clashes	Symm-Clashes
2	B	1351	FAD	11	0
3	D	3352	MH6	2	0
2	C	2351	FAD	4	0
2	D	3351	FAD	12	0
2	A	351	FAD	8	0

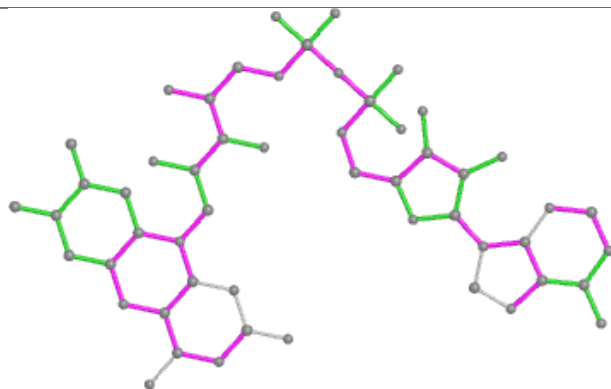
The following is a two-dimensional graphical depiction of Mogul quality analysis of bond lengths, bond angles, torsion angles, and ring geometry for all instances of the Ligand of Interest. In addition, ligands with molecular weight > 250 and outliers as shown on the validation Tables will also be included. For torsion angles, if less than 5% of the Mogul distribution of torsion angles is within 10 degrees of the torsion angle in question, then that torsion angle is considered an outlier. Any bond that is central to one or more torsion angles identified as an outlier by Mogul will be highlighted in the graph. For rings, the root-mean-square deviation (RMSD) between the ring in question and similar rings identified by Mogul is calculated over all ring torsion angles. If the average RMSD is greater than 60 degrees and the minimal RMSD between the ring in question and any Mogul-identified rings is also greater than 60 degrees, then that ring is considered an outlier. The outliers are highlighted in purple. The color gray indicates Mogul did not find sufficient equivalents in the CSD to analyse the geometry.



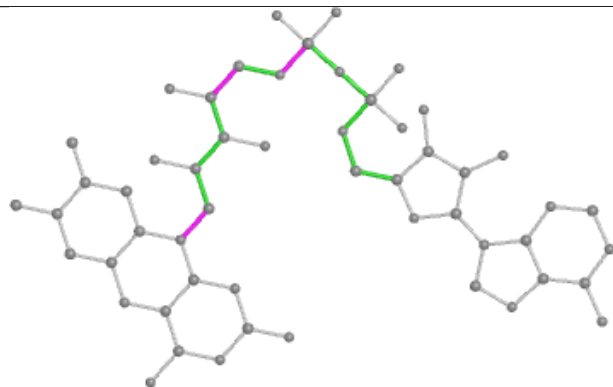
Ligand FAD C 2351



Bond lengths



Bond angles

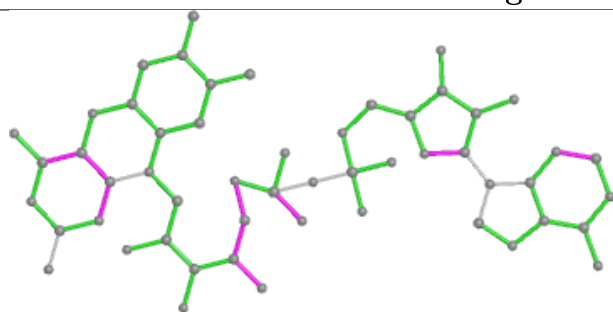


Torsions

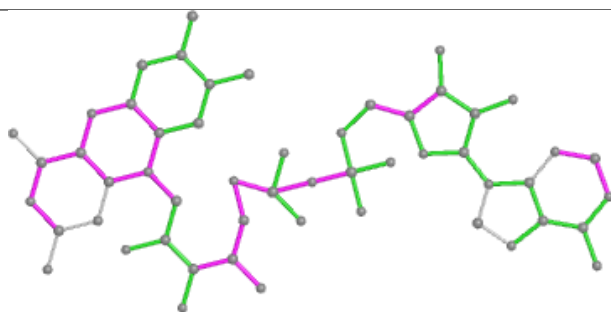


Rings

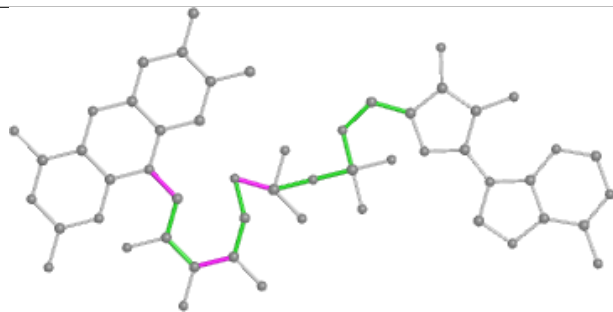
Ligand FAD D 3351



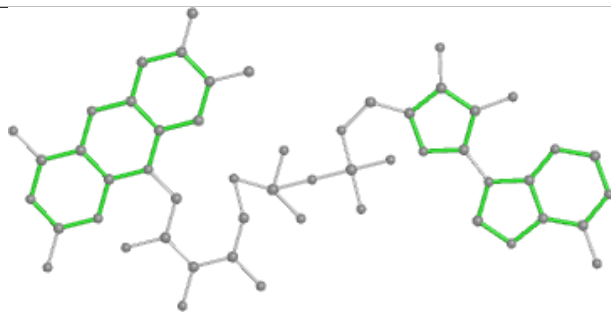
Bond lengths



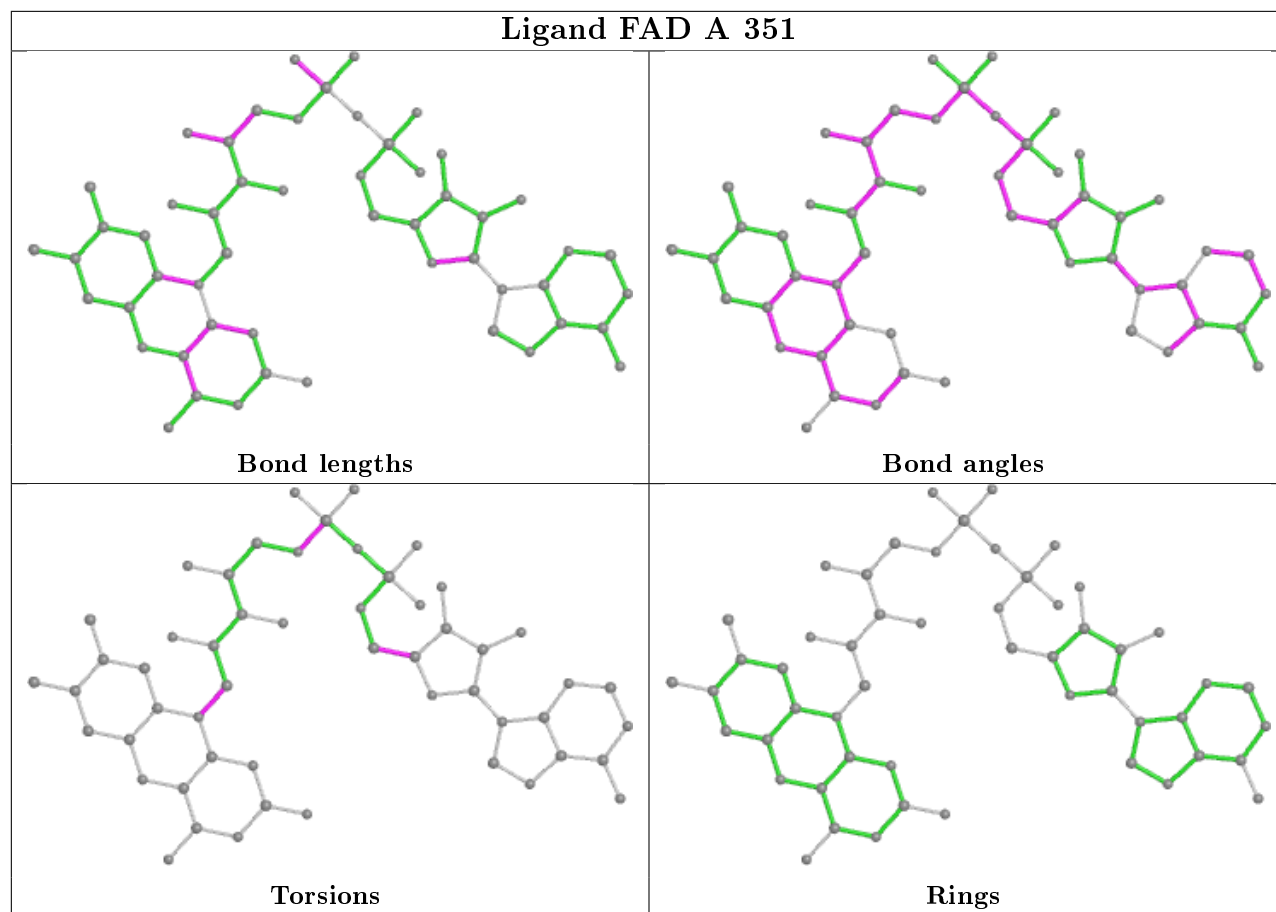
Bond angles



Torsions



Rings



5.7 Other polymers [i](#)

There are no such residues in this entry.

5.8 Polymer linkage issues [i](#)

There are no chain breaks in this entry.

6 Fit of model and data

6.1 Protein, DNA and RNA chains

In the following table, the column labelled ‘#RSRZ> 2’ contains the number (and percentage) of RSRZ outliers, followed by percent RSRZ outliers for the chain as percentile scores relative to all X-ray entries and entries of similar resolution. The OWAB column contains the minimum, median, 95th percentile and maximum values of the occupancy-weighted average B-factor per residue. The column labelled ‘Q< 0.9’ lists the number of (and percentage) of residues with an average occupancy less than 0.9.

Mol	Chain	Analysed	<RSRZ>	#RSRZ>2	OWAB(Å ²)	Q<0.9
1	A	340/347 (97%)	0.02	12 (3%) 44 28	21, 43, 69, 80	0
1	B	340/347 (97%)	-0.03	9 (2%) 56 40	21, 38, 60, 66	0
1	C	340/347 (97%)	-0.23	2 (0%) 89 83	19, 35, 57, 76	0
1	D	340/347 (97%)	-0.11	3 (0%) 84 75	19, 39, 61, 72	0
All	All	1360/1388 (97%)	-0.09	26 (1%) 66 53	19, 38, 62, 80	0

All (26) RSRZ outliers are listed below:

Mol	Chain	Res	Type	RSRZ
1	A	303	THR	4.0
1	B	1300	PRO	4.0
1	B	1301	SER	3.8
1	A	296	LEU	3.8
1	A	339	LEU	3.4
1	B	1063	GLN	2.9
1	A	298	THR	2.9
1	A	299	GLY	2.7
1	B	1340	SER	2.7
1	B	1339	LEU	2.7
1	B	1060	ASN	2.5
1	D	3340	SER	2.5
1	B	1183	GLY	2.5
1	A	29	PRO	2.4
1	A	302	ASN	2.4
1	B	1299	GLY	2.3
1	A	301	SER	2.2
1	A	311	HIS	2.2
1	B	1070	GLN	2.1
1	C	2059	PRO	2.1
1	A	70	GLN	2.1

Continued on next page...

Continued from previous page...

Mol	Chain	Res	Type	RSRZ
1	C	2311	HIS	2.1
1	D	3068	SER	2.1
1	D	3183	GLY	2.0
1	A	310	GLY	2.0
1	A	340	SER	2.0

6.2 Non-standard residues in protein, DNA, RNA chains [i](#)

There are no non-standard protein/DNA/RNA residues in this entry.

6.3 Carbohydrates [i](#)

There are no carbohydrates in this entry.

6.4 Ligands [i](#)

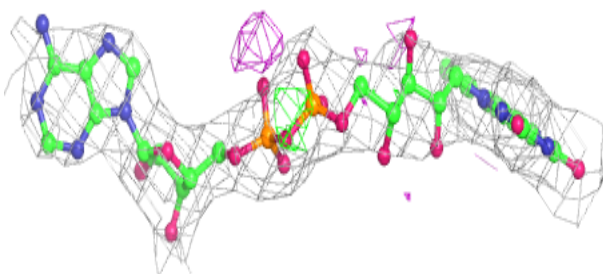
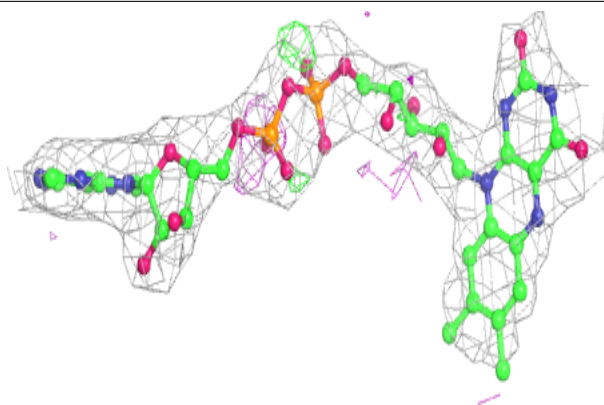
In the following table, the Atoms column lists the number of modelled atoms in the group and the number defined in the chemical component dictionary. The B-factors column lists the minimum, median, 95th percentile and maximum values of B factors of atoms in the group. The column labelled 'Q< 0.9' lists the number of atoms with occupancy less than 0.9.

Mol	Type	Chain	Res	Atoms	RSCC	RSR	B-factors(\AA^2)	Q<0.9
3	MH6	D	3352	7/7	0.82	0.39	81,81,81,81	0
3	MH6	A	352	7/7	0.90	0.24	81,81,82,82	0
3	MH6	C	2352	7/7	0.91	0.34	67,67,67,67	0
3	MH6	B	1352	7/7	0.93	0.29	54,54,55,55	0
2	FAD	A	351	53/53	0.93	0.24	30,40,46,47	0
2	FAD	C	2351	53/53	0.94	0.21	19,31,38,41	0
2	FAD	D	3351	53/53	0.94	0.22	21,31,36,38	0
2	FAD	B	1351	53/53	0.94	0.22	22,33,46,49	0

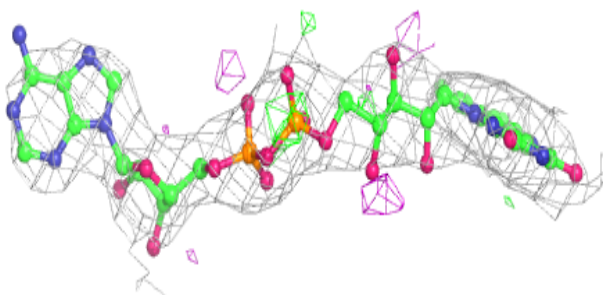
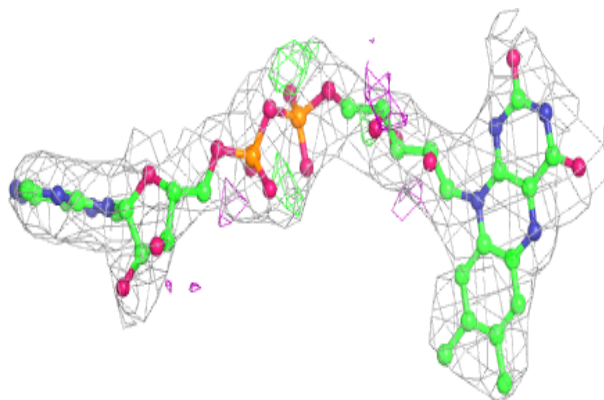
The following is a graphical depiction of the model fit to experimental electron density of all instances of the Ligand of Interest. In addition, ligands with molecular weight > 250 and outliers as shown on the geometry validation Tables will also be included. Each fit is shown from different orientation to approximate a three-dimensional view.

Electron density around FAD A 351:

$2mF_o-DF_c$ (at 0.7 rmsd) in gray
 mF_o-DF_c (at 3 rmsd) in purple (negative)
and green (positive)

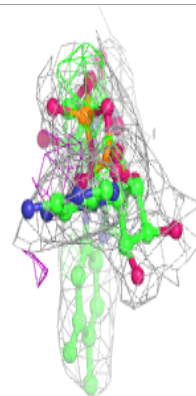
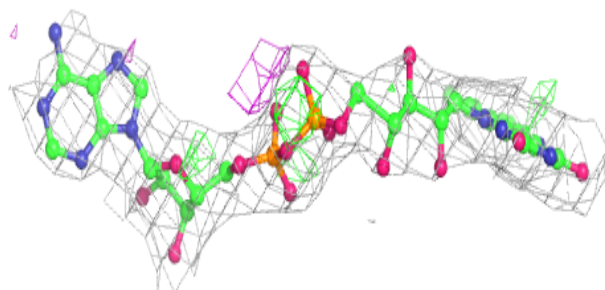
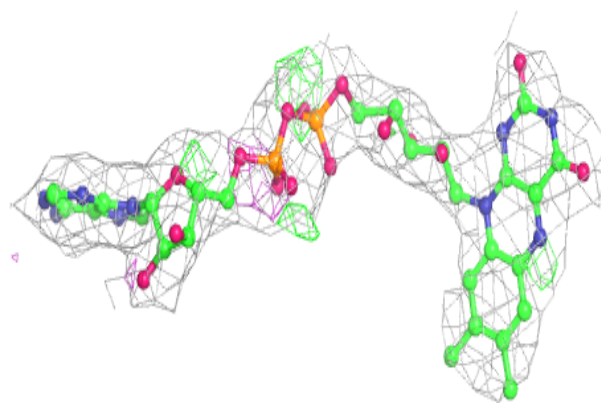
**Electron density around FAD C 2351:**

$2mF_o-DF_c$ (at 0.7 rmsd) in gray
 mF_o-DF_c (at 3 rmsd) in purple (negative)
and green (positive)

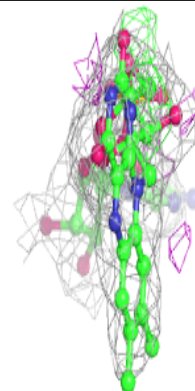
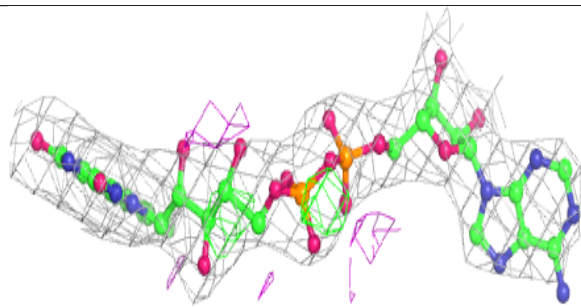
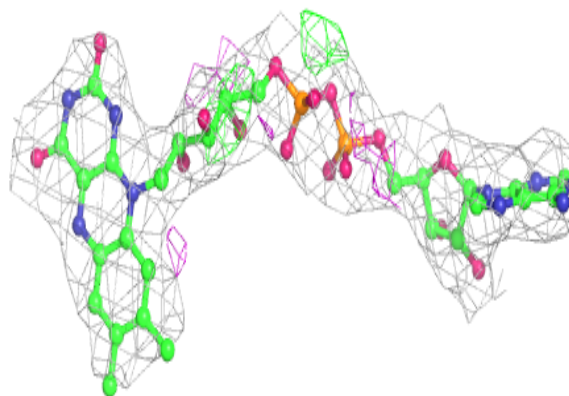


Electron density around FAD D 3351:

$2mF_o - DF_c$ (at 0.7 rmsd) in gray
 $mF_o - DF_c$ (at 3 rmsd) in purple (negative)
and green (positive)

**Electron density around FAD B 1351:**

$2mF_o - DF_c$ (at 0.7 rmsd) in gray
 $mF_o - DF_c$ (at 3 rmsd) in purple (negative)
and green (positive)



6.5 Other polymers [i](#)

There are no such residues in this entry.