



Full wwPDB X-ray Structure Validation Report ⓘ

May 13, 2020 – 06:57 am BST

PDB ID : 5E41
Title : Crystal structure of the large fragment of DNA Polymerase I from *Thermus aquaticus* in a closed ternary complex with 5-(N-(10-hydroxydecanoyl)-amino pentenyl)-2'-deoxyuridine-triphosphate
Authors : Hottin, A.; Betz, K.; Marx, A.
Deposited on : 2015-10-05
Resolution : 1.80 Å(reported)

This is a Full wwPDB X-ray Structure Validation Report for a publicly released PDB entry.

We welcome your comments at validation@mail.wwpdb.org

A user guide is available at

<https://www.wwpdb.org/validation/2017/XrayValidationReportHelp>

with specific help available everywhere you see the ⓘ symbol.

The following versions of software and data (see [references ⓘ](#)) were used in the production of this report:

MolProbity : 4.02b-467
Mogul : 1.8.5 (274361), CSD as541be (2020)
Xtriage (Phenix) : 1.13
EDS : 2.11
buster-report : 1.1.7 (2018)
Percentile statistics : 20191225.v01 (using entries in the PDB archive December 25th 2019)
Refmac : 5.8.0158
CCP4 : 7.0.044 (Gargrove)
Ideal geometry (proteins) : Engh & Huber (2001)
Ideal geometry (DNA, RNA) : Parkinson et al. (1996)
Validation Pipeline (wwPDB-VP) : 2.11

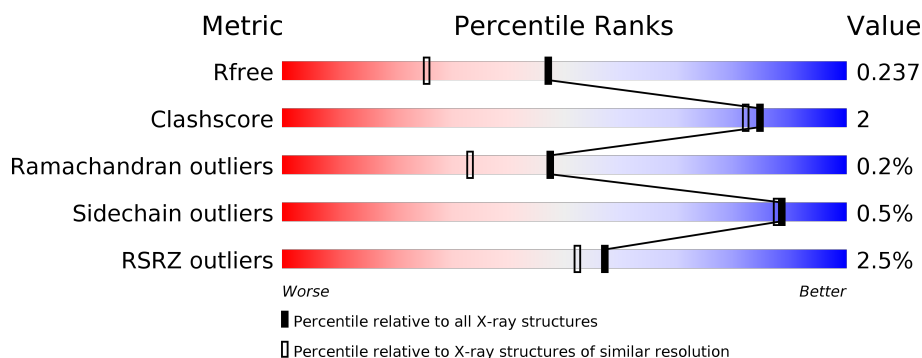
1 Overall quality at a glance

The following experimental techniques were used to determine the structure:

X-RAY DIFFRACTION

The reported resolution of this entry is 1.80 Å.

Percentile scores (ranging between 0-100) for global validation metrics of the entry are shown in the following graphic. The table shows the number of entries on which the scores are based.



Metric	Whole archive (#Entries)	Similar resolution (#Entries, resolution range(Å))
R_{free}	130704	5950 (1.80-1.80)
Clashscore	141614	6793 (1.80-1.80)
Ramachandran outliers	138981	6697 (1.80-1.80)
Sidechain outliers	138945	6696 (1.80-1.80)
RSRZ outliers	127900	5850 (1.80-1.80)

The table below summarises the geometric issues observed across the polymeric chains and their fit to the electron density. The red, orange, yellow and green segments on the lower bar indicate the fraction of residues that contain outliers for ≥ 3 , 2, 1 and 0 types of geometric quality criteria respectively. A grey segment represents the fraction of residues that are not modelled. The numeric value for each fraction is indicated below the corresponding segment, with a dot representing fractions $\leq 5\%$. The upper red bar (where present) indicates the fraction of residues that have poor fit to the electron density. The numeric value is given above the bar.

Mol	Chain	Length	Quality of chain
1	A	540	<div> <div>3%</div> <div> <div></div> <div>95%</div> <div>5%</div> </div> </div>
2	B	12	<div> <div>83%</div> <div>17%</div> </div>
3	C	16	<div> <div>56%</div> <div>44%</div> </div>

2 Entry composition

There are 7 unique types of molecules in this entry. The entry contains 9985 atoms, of which 4704 are hydrogens and 0 are deuteriums.

In the tables below, the ZeroOcc column contains the number of atoms modelled with zero occupancy, the AltConf column contains the number of residues with at least one atom in alternate conformation and the Trace column contains the number of residues modelled with at most 2 atoms.

- Molecule 1 is a protein called DNA polymerase I, thermostable.

Mol	Chain	Residues	Atoms						ZeroOcc	AltConf	Trace
1	A	540	Total	C	H	N	O	S	0	4	0
			8635	2739	4320	775	788	13			

- Molecule 2 is a DNA chain called DNA (5'-D(*GP*AP*CP*CP*AP*CP*GP*GP*CP*GP*CP*(DOC))-3').

Mol	Chain	Residues	Atoms						ZeroOcc	AltConf	Trace
2	B	12	Total	C	H	N	O	P	0	0	0
			374	114	134	48	67	11			

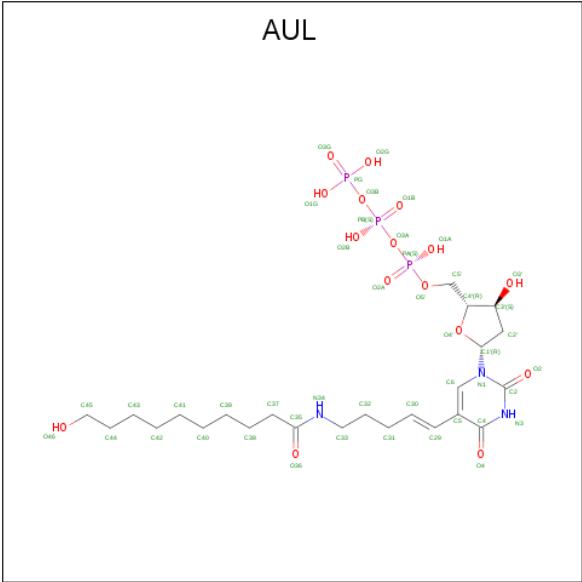
- Molecule 3 is a DNA chain called DNA (5'-D(*AP*AP*AP*AP*GP*GP*CP*GP*CP*CP*GP*TP*GP*GP*TP*C)-3').

Mol	Chain	Residues	Atoms						ZeroOcc	AltConf	Trace
3	C	16	Total	C	H	N	O	P	0	0	0
			509	156	180	66	92	15			

- Molecule 4 is MAGNESIUM ION (three-letter code: MG) (formula: Mg).

Mol	Chain	Residues	Atoms		ZeroOcc	AltConf
4	A	2	Total	Mg	0	0
			2	2		

- Molecule 5 is 2'-deoxy-5-{(1E)-5-[(10-hydroxydecanoyl)amino]pent-1-en-1-yl}uridine 5'-(tetrahydrogen triphosphate) (three-letter code: AUL) (formula: C₂₄H₄₂N₃O₁₆P₃).



Mol	Chain	Residues	Atoms					ZeroOcc	AltConf
5	A	1	Total	C	H	N	O	23	0
			84	24	38	3	16		

- Molecule 6 is GLYCEROL (three-letter code: GOL) (formula: C₃H₈O₃).



Mol	Chain	Residues	Atoms				ZeroOcc	AltConf
6	A	1	Total	C	H	O	0	0
			14	3	8	3		
6	A	1	Total	C	H	O	0	0
			14	3	8	3		
6	A	1	Total	C	H	O	0	0
			14	3	8	3		

Continued on next page...

Continued from previous page...

Mol	Chain	Residues	Atoms				ZeroOcc	AltConf
6	C	1	Total	C	H	O	0	0
			14	3	8	3		

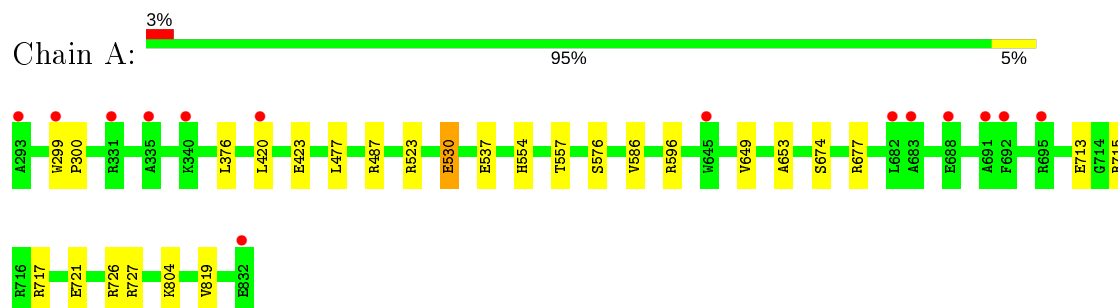
- Molecule 7 is water.

Mol	Chain	Residues	Atoms		ZeroOcc	AltConf
7	A	255	Total	O	0	0
			255	255		
7	B	32	Total	O	0	0
			32	32		
7	C	38	Total	O	0	0
			38	38		

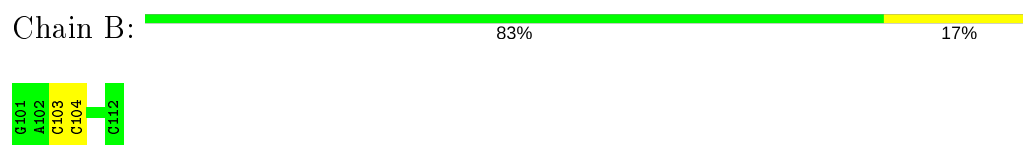
3 Residue-property plots

These plots are drawn for all protein, RNA and DNA chains in the entry. The first graphic for a chain summarises the proportions of the various outlier classes displayed in the second graphic. The second graphic shows the sequence view annotated by issues in geometry and electron density. Residues are color-coded according to the number of geometric quality criteria for which they contain at least one outlier: green = 0, yellow = 1, orange = 2 and red = 3 or more. A red dot above a residue indicates a poor fit to the electron density ($RSRZ > 2$). Stretches of 2 or more consecutive residues without any outlier are shown as a green connector. Residues present in the sample, but not in the model, are shown in grey.

- Molecule 1: DNA polymerase I, thermostable



- Molecule 2: DNA (5'-D(*GP*AP*CP*CP*AP*CP*GP*GP*CP*GP*CP*(DOC))-3')



- Molecule 3: DNA (5'-D(*AP*AP*AP*AP*GP*GP*CP*GP*CP*CP*GP*TP*GP*GP*TP*C)-3')



4 Data and refinement statistics

Property	Value	Source
Space group	P 31 2 1	Depositor
Cell constants a, b, c, α , β , γ	107.77Å 107.77Å 89.61Å 90.00° 90.00° 120.00°	Depositor
Resolution (Å)	46.67 – 1.80 46.67 – 1.80	Depositor EDS
% Data completeness (in resolution range)	99.9 (46.67-1.80) 99.9 (46.67-1.80)	Depositor EDS
R_{merge}	(Not available)	Depositor
R_{sym}	(Not available)	Depositor
$\langle I/\sigma(I) \rangle$ ¹	0.93 (at 1.79Å)	Xtriage
Refinement program	PHENIX (dev_2165: ???)	Depositor
R, R_{free}	0.192 , 0.236 0.193 , 0.237	Depositor DCC
R_{free} test set	2827 reflections (5.06%)	wwPDB-VP
Wilson B-factor (Å ²)	35.1	Xtriage
Anisotropy	0.247	Xtriage
Bulk solvent k_{sol} (e/Å ³), B_{sol} (Å ²)	0.38 , 45.4	EDS
L-test for twinning ²	$\langle L \rangle = 0.48$, $\langle L^2 \rangle = 0.31$	Xtriage
Estimated twinning fraction	0.039 for -h,-k,l	Xtriage
F_o, F_c correlation	0.97	EDS
Total number of atoms	9985	wwPDB-VP
Average B, all atoms (Å ²)	55.0	wwPDB-VP

Xtriage's analysis on translational NCS is as follows: *The largest off-origin peak in the Patterson function is 4.46% of the height of the origin peak. No significant pseudotranslation is detected.*

¹Intensities estimated from amplitudes.

²Theoretical values of $\langle |L| \rangle$, $\langle L^2 \rangle$ for acentric reflections are 0.5, 0.333 respectively for untwinned datasets, and 0.375, 0.2 for perfectly twinned datasets.

5 Model quality

5.1 Standard geometry

Bond lengths and bond angles in the following residue types are not validated in this section: GOL, MG, AUL, DOC

The Z score for a bond length (or angle) is the number of standard deviations the observed value is removed from the expected value. A bond length (or angle) with $|Z| > 5$ is considered an outlier worth inspection. RMSZ is the root-mean-square of all Z scores of the bond lengths (or angles).

Mol	Chain	Bond lengths		Bond angles	
		RMSZ	# Z >5	RMSZ	# Z >5
1	A	0.32	0/4408	0.50	0/5970
2	B	0.75	0/249	0.85	0/382
3	C	0.76	0/370	0.87	0/570
All	All	0.40	0/5027	0.56	0/6922

There are no bond length outliers.

There are no bond angle outliers.

There are no chirality outliers.

There are no planarity outliers.

5.2 Too-close contacts

In the following table, the Non-H and H(model) columns list the number of non-hydrogen atoms and hydrogen atoms in the chain respectively. The H(added) column lists the number of hydrogen atoms added and optimized by MolProbity. The Clashes column lists the number of clashes within the asymmetric unit, whereas Symm-Clashes lists symmetry related clashes.

Mol	Chain	Non-H	H(model)	H(added)	Clashes	Symm-Clashes
1	A	4315	4320	4359	17	0
2	B	240	134	134	1	0
3	C	329	180	180	6	0
4	A	2	0	0	0	0
5	A	46	38	0	0	0
6	A	18	24	24	1	0
6	C	6	8	8	0	0
7	A	255	0	0	5	1
7	B	32	0	0	0	0
7	C	38	0	0	1	0
All	All	5281	4704	4705	22	1

The all-atom clashscore is defined as the number of clashes found per 1000 atoms (including hydrogen atoms). The all-atom clashscore for this structure is 2.

All (22) close contacts within the same asymmetric unit are listed below, sorted by their clash magnitude.

Atom-1	Atom-2	Interatomic distance (Å)	Clash overlap (Å)
3:C:203:DA:N7	7:C:401:HOH:O	2.25	0.69
6:A:904:GOL:O1	7:A:1001:HOH:O	2.13	0.66
1:A:596:ARG:NH2	7:A:1007:HOH:O	2.30	0.64
1:A:537:GLU:OE2	7:A:1002:HOH:O	2.15	0.64
1:A:713:GLU:OE2	1:A:717:ARG:NH2	2.32	0.63
1:A:523:ARG:NH1	1:A:530:GLU:OE1	2.36	0.51
3:C:210:DC:H2'	3:C:211:DG:C8	2.45	0.51
1:A:423:GLU:OE1	1:A:727:ARG:NH2	2.43	0.51
1:A:299:TRP:CG	1:A:300:PRO:HA	2.48	0.48
1:A:674:SER:HB3	3:C:203:DA:H8	1.81	0.46
1:A:715:ARG:NH2	7:A:1022:HOH:O	2.49	0.45
1:A:576:SER:O	3:C:208:DG:H4'	2.16	0.45
1:A:677:ARG:HD2	3:C:202:DA:C8	2.53	0.44
1:A:477:LEU:O	7:A:1003:HOH:O	2.21	0.43
3:C:214:DG:H2''	3:C:215:DT:H5''	2.01	0.43
2:B:103:DC:H2''	2:B:104:DC:H5'	2.01	0.42
1:A:804:LYS:HE2	1:A:819:VAL:O	2.20	0.42
1:A:554:HIS:HB3	1:A:557:THR:OG1	2.20	0.41
1:A:721:GLU:HA	1:A:726:ARG:O	2.20	0.41
1:A:376:LEU:HD22	1:A:420:LEU:HD12	2.03	0.41
1:A:649:VAL:CG1	1:A:653:ALA:HB3	2.51	0.40
1:A:713:GLU:O	1:A:717:ARG:HG3	2.22	0.40

All (1) symmetry-related close contacts are listed below. The label for Atom-2 includes the symmetry operator and encoded unit-cell translations to be applied.

Atom-1	Atom-2	Interatomic distance (Å)	Clash overlap (Å)
7:A:1004:HOH:O	7:A:1128:HOH:O[6_555]	2.08	0.12

5.3 Torsion angles [i](#)

5.3.1 Protein backbone [i](#)

In the following table, the Percentiles column shows the percent Ramachandran outliers of the chain as a percentile score with respect to all X-ray entries followed by that with respect to entries of similar resolution.

The Analysed column shows the number of residues for which the backbone conformation was analysed, and the total number of residues.

Mol	Chain	Analysed	Favoured	Allowed	Outliers	Percentiles	
1	A	542/540 (100%)	523 (96%)	18 (3%)	1 (0%)	47	33

All (1) Ramachandran outliers are listed below:

Mol	Chain	Res	Type
1	A	586	VAL

5.3.2 Protein sidechains ⓘ

In the following table, the Percentiles column shows the percent sidechain outliers of the chain as a percentile score with respect to all X-ray entries followed by that with respect to entries of similar resolution.

The Analysed column shows the number of residues for which the sidechain conformation was analysed, and the total number of residues.

Mol	Chain	Analysed	Rotameric	Outliers	Percentiles	
1	A	445/441 (101%)	443 (100%)	2 (0%)	91	89

All (2) residues with a non-rotameric sidechain are listed below:

Mol	Chain	Res	Type
1	A	487	ARG
1	A	530	GLU

Some sidechains can be flipped to improve hydrogen bonding and reduce clashes. There are no such sidechains identified.

5.3.3 RNA ⓘ

There are no RNA molecules in this entry.

5.4 Non-standard residues in protein, DNA, RNA chains ⓘ

1 non-standard protein/DNA/RNA residue is modelled in this entry.

In the following table, the Counts columns list the number of bonds (or angles) for which Mogul statistics could be retrieved, the number of bonds (or angles) that are observed in the model and the number of bonds (or angles) that are defined in the Chemical Component Dictionary. The

Link column lists molecule types, if any, to which the group is linked. The Z score for a bond length (or angle) is the number of standard deviations the observed value is removed from the expected value. A bond length (or angle) with $|Z| > 2$ is considered an outlier worth inspection. RMSZ is the root-mean-square of all Z scores of the bond lengths (or angles).

Mol	Type	Chain	Res	Link	Bond lengths			Bond angles		
					Counts	RMSZ	# Z > 2	Counts	RMSZ	# Z > 2
2	DOC	B	112	3,2	14,19,20	2.53	6 (42%)	13,26,29	2.13	4 (30%)

In the following table, the Chirals column lists the number of chiral outliers, the number of chiral centers analysed, the number of these observed in the model and the number defined in the Chemical Component Dictionary. Similar counts are reported in the Torsion and Rings columns. '-' means no outliers of that kind were identified.

Mol	Type	Chain	Res	Link	Chirals	Torsions	Rings
2	DOC	B	112	3,2	-	0/4/18/19	0/2/2/2

All (6) bond length outliers are listed below:

Mol	Chain	Res	Type	Atoms	Z	Observed(Å)	Ideal(Å)
2	B	112	DOC	C2-N3	4.91	1.47	1.38
2	B	112	DOC	C5-C4	4.55	1.52	1.41
2	B	112	DOC	C6-N1	3.70	1.40	1.35
2	B	112	DOC	C4-N4	3.14	1.44	1.35
2	B	112	DOC	O4'-C1'	-2.60	1.36	1.42
2	B	112	DOC	C4-N3	-2.43	1.31	1.35

All (4) bond angle outliers are listed below:

Mol	Chain	Res	Type	Atoms	Z	Observed(°)	Ideal(°)
2	B	112	DOC	C2-N3-C4	5.50	121.91	116.34
2	B	112	DOC	O4'-C1'-C2'	3.49	110.45	106.67
2	B	112	DOC	N4-C4-N3	2.05	119.73	116.49
2	B	112	DOC	C5-C4-N3	-2.03	119.38	121.72

There are no chirality outliers.

There are no torsion outliers.

There are no ring outliers.

No monomer is involved in short contacts.

5.5 Carbohydrates [i](#)

There are no carbohydrates in this entry.

5.6 Ligand geometry [i](#)

Of 7 ligands modelled in this entry, 2 are monoatomic - leaving 5 for Mogul analysis.

In the following table, the Counts columns list the number of bonds (or angles) for which Mogul statistics could be retrieved, the number of bonds (or angles) that are observed in the model and the number of bonds (or angles) that are defined in the Chemical Component Dictionary. The Link column lists molecule types, if any, to which the group is linked. The Z score for a bond length (or angle) is the number of standard deviations the observed value is removed from the expected value. A bond length (or angle) with $|Z| > 2$ is considered an outlier worth inspection. RMSZ is the root-mean-square of all Z scores of the bond lengths (or angles).

Mol	Type	Chain	Res	Link	Bond lengths			Bond angles		
					Counts	RMSZ	# Z > 2	Counts	RMSZ	# Z > 2
6	GOL	A	906	-	5,5,5	0.35	0	5,5,5	0.26	0
6	GOL	A	905	-	5,5,5	0.41	0	5,5,5	0.29	0
5	AUL	A	903	4	40,47,47	0.70	2 (5%)	48,65,65	1.92	5 (10%)
6	GOL	C	301	-	5,5,5	0.39	0	5,5,5	0.17	0
6	GOL	A	904	-	5,5,5	0.36	0	5,5,5	0.25	0

In the following table, the Chirals column lists the number of chiral outliers, the number of chiral centers analysed, the number of these observed in the model and the number defined in the Chemical Component Dictionary. Similar counts are reported in the Torsion and Rings columns. '-' means no outliers of that kind were identified.

Mol	Type	Chain	Res	Link	Chirals	Torsions	Rings
6	GOL	A	906	-	-	4/4/4/4	-
6	GOL	A	905	-	-	2/4/4/4	-
5	AUL	A	903	4	-	8/38/53/53	0/2/2/2
6	GOL	C	301	-	-	4/4/4/4	-
6	GOL	A	904	-	-	0/4/4/4	-

All (2) bond length outliers are listed below:

Mol	Chain	Res	Type	Atoms	Z	Observed(Å)	Ideal(Å)
5	A	903	AUL	C2-N3	-2.38	1.33	1.38
5	A	903	AUL	C4-C5	2.26	1.49	1.43

All (5) bond angle outliers are listed below:

Mol	Chain	Res	Type	Atoms	Z	Observed(°)	Ideal(°)
5	A	903	AUL	C4-N3-C2	10.34	123.88	115.14
5	A	903	AUL	C2'-C1'-N1	-3.73	105.66	114.27
5	A	903	AUL	C6-C5-C4	3.64	116.88	114.02
5	A	903	AUL	C31-C30-C29	-3.54	118.78	125.45
5	A	903	AUL	PB-O3B-PG	-2.24	125.16	132.83

There are no chirality outliers.

All (18) torsion outliers are listed below:

Mol	Chain	Res	Type	Atoms
6	A	906	GOL	O1-C1-C2-C3
5	A	903	AUL	C30-C29-C5-C6
5	A	903	AUL	PB-O3B-PG-O1G
6	A	905	GOL	O1-C1-C2-C3
5	A	903	AUL	C39-C40-C41-C42
6	A	906	GOL	O1-C1-C2-O2
6	A	905	GOL	O1-C1-C2-O2
5	A	903	AUL	C38-C39-C40-C41
6	C	301	GOL	O2-C2-C3-O3
5	A	903	AUL	PB-O3B-PG-O2G
6	C	301	GOL	O1-C1-C2-O2
5	A	903	AUL	C42-C43-C44-C45
6	A	906	GOL	C1-C2-C3-O3
6	C	301	GOL	O1-C1-C2-C3
6	A	906	GOL	O2-C2-C3-O3
5	A	903	AUL	PB-O3B-PG-O3G
6	C	301	GOL	C1-C2-C3-O3
5	A	903	AUL	C29-C30-C31-C32

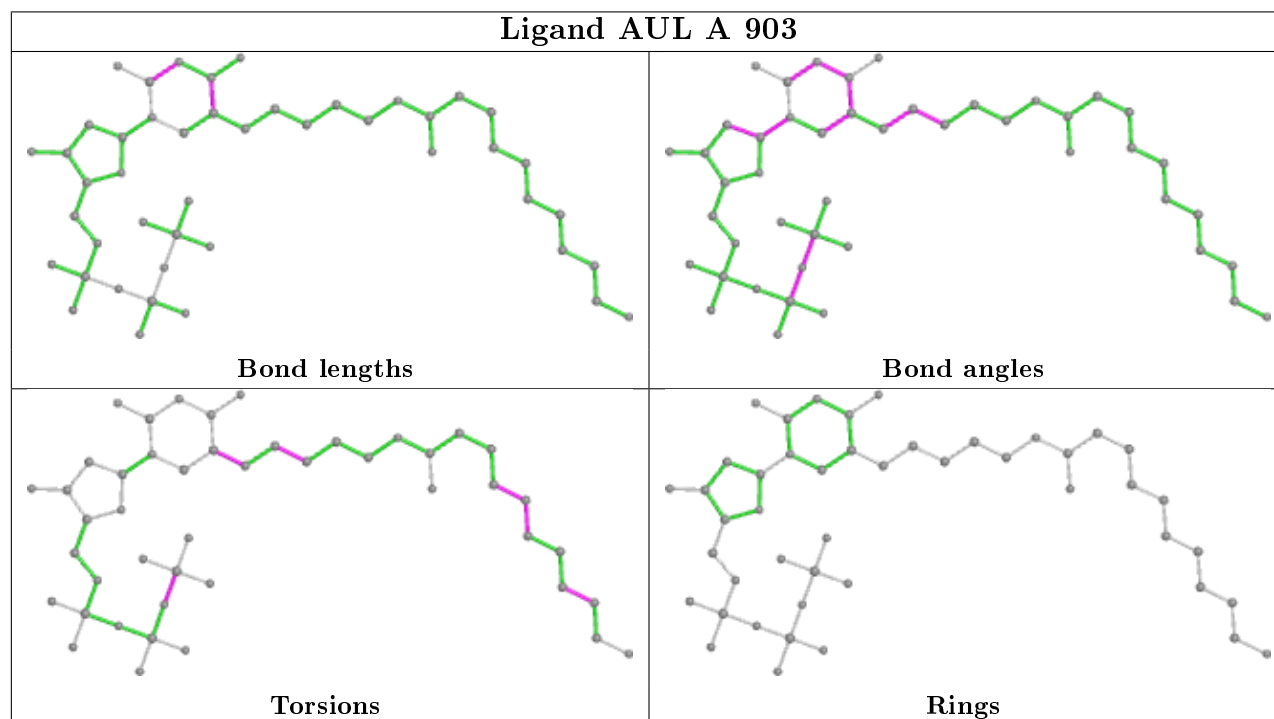
There are no ring outliers.

1 monomer is involved in 1 short contact:

Mol	Chain	Res	Type	Clashes	Symm-Clashes
6	A	904	GOL	1	0

The following is a two-dimensional graphical depiction of Mogul quality analysis of bond lengths, bond angles, torsion angles, and ring geometry for all instances of the Ligand of Interest. In addition, ligands with molecular weight > 250 and outliers as shown on the validation Tables will also be included. For torsion angles, if less than 5% of the Mogul distribution of torsion angles is within 10 degrees of the torsion angle in question, then that torsion angle is considered an outlier. Any bond that is central to one or more torsion angles identified as an outlier by Mogul will be highlighted in the graph. For rings, the root-mean-square deviation (RMSD) between the ring in question and similar rings identified by Mogul is calculated over all ring torsion angles. If the

average RMSD is greater than 60 degrees and the minimal RMSD between the ring in question and any Mogul-identified rings is also greater than 60 degrees, then that ring is considered an outlier. The outliers are highlighted in purple. The color gray indicates Mogul did not find sufficient equivalents in the CSD to analyse the geometry.



5.7 Other polymers [i](#)

There are no such residues in this entry.

5.8 Polymer linkage issues [i](#)

There are no chain breaks in this entry.

6 Fit of model and data ⓘ

6.1 Protein, DNA and RNA chains ⓘ

In the following table, the column labelled ‘#RSRZ> 2’ contains the number (and percentage) of RSRZ outliers, followed by percent RSRZ outliers for the chain as percentile scores relative to all X-ray entries and entries of similar resolution. The OWAB column contains the minimum, median, 95th percentile and maximum values of the occupancy-weighted average B-factor per residue. The column labelled ‘Q< 0.9’ lists the number of (and percentage) of residues with an average occupancy less than 0.9.

Mol	Chain	Analysed	<RSRZ>	#RSRZ>2	OWAB(Å ²)	Q<0.9
1	A	540/540 (100%)	0.08	14 (2%) 56 51	29, 47, 80, 119	0
2	B	11/12 (91%)	-0.33	0 100 100	33, 37, 77, 79	0
3	C	16/16 (100%)	-0.35	0 100 100	30, 44, 91, 106	0
All	All	567/568 (99%)	0.06	14 (2%) 57 52	29, 47, 80, 119	0

All (14) RSRZ outliers are listed below:

Mol	Chain	Res	Type	RSRZ
1	A	293	ALA	4.0
1	A	645	TRP	3.9
1	A	683	ALA	3.6
1	A	832	GLU	2.8
1	A	682	LEU	2.7
1	A	695	ARG	2.4
1	A	691	ALA	2.2
1	A	299	TRP	2.2
1	A	331	ARG	2.2
1	A	692	PHE	2.2
1	A	420	LEU	2.1
1	A	688	GLU	2.1
1	A	335	ALA	2.0
1	A	340	LYS	2.0

6.2 Non-standard residues in protein, DNA, RNA chains ⓘ

In the following table, the Atoms column lists the number of modelled atoms in the group and the number defined in the chemical component dictionary. The B-factors column lists the minimum, median, 95th percentile and maximum values of B factors of atoms in the group. The column labelled ‘Q< 0.9’ lists the number of atoms with occupancy less than 0.9.

Mol	Type	Chain	Res	Atoms	RSCC	RSR	B-factors(\AA^2)	Q<0.9
2	DOC	B	112	18/19	0.97	0.11	34,41,52,52	0

6.3 Carbohydrates [i](#)

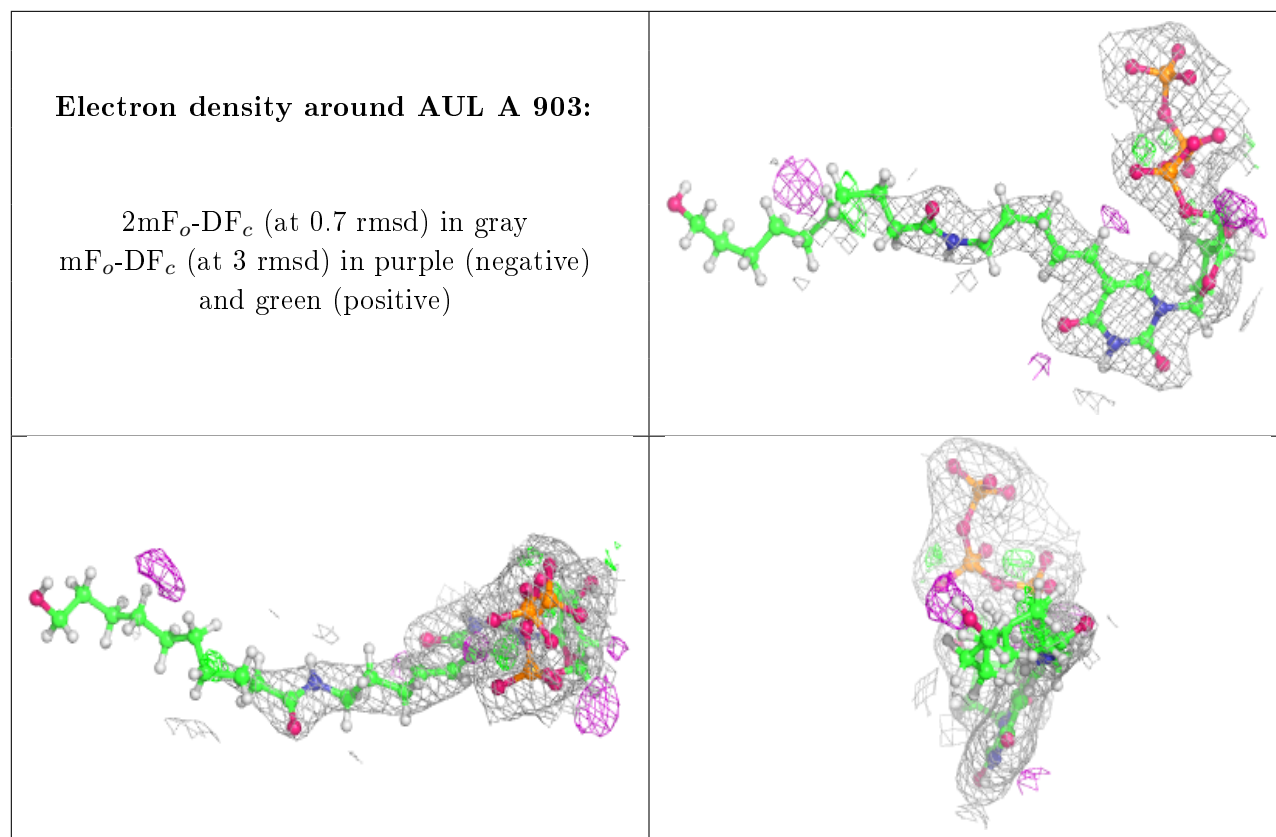
There are no carbohydrates in this entry.

6.4 Ligands [i](#)

In the following table, the Atoms column lists the number of modelled atoms in the group and the number defined in the chemical component dictionary. The B-factors column lists the minimum, median, 95th percentile and maximum values of B factors of atoms in the group. The column labelled 'Q< 0.9' lists the number of atoms with occupancy less than 0.9.

Mol	Type	Chain	Res	Atoms	RSCC	RSR	B-factors(\AA^2)	Q<0.9
6	GOL	C	301	6/6	0.77	0.29	103,124,145,149	0
6	GOL	A	905	6/6	0.77	0.19	35,43,49,50	14
6	GOL	A	906	6/6	0.81	0.27	48,57,62,64	14
6	GOL	A	904	6/6	0.91	0.17	57,69,77,77	0
4	MG	A	901	1/1	0.96	0.06	38,38,38,38	0
4	MG	A	902	1/1	0.97	0.04	35,35,35,35	0
5	AUL	A	903	46/46	0.98	0.11	33,61,82,83	23

The following is a graphical depiction of the model fit to experimental electron density of all instances of the Ligand of Interest. In addition, ligands with molecular weight > 250 and outliers as shown on the geometry validation Tables will also be included. Each fit is shown from different orientation to approximate a three-dimensional view.



6.5 Other polymers [i](#)

There are no such residues in this entry.