



wwPDB X-ray Structure Validation Summary Report ⓘ

May 26, 2020 – 11:10 am BST

PDB ID : 1E5E
Title : METHIONINE GAMMA-LYASE (MGL) FROM TRICHOMONAS VAGINALIS IN COMPLEX WITH PROPARGYLGLYCINE
Authors : Goodall, G.; Mottram, J.C.; Coombs, G.H.; Lapthorn, A.J.
Deposited on : 2000-07-25
Resolution : 2.18 Å(reported)

This is a wwPDB X-ray Structure Validation Summary Report for a publicly released PDB entry.

We welcome your comments at validation@mail.wwpdb.org

A user guide is available at

<https://www.wwpdb.org/validation/2017/XrayValidationReportHelp>

with specific help available everywhere you see the ⓘ symbol.

The following versions of software and data (see [references ⓘ](#)) were used in the production of this report:

MolProbity : 4.02b-467
Mogul : 1.8.5 (274361), CSD as541be (2020)
Xtriage (Phenix) : **NOT EXECUTED**
EDS : **NOT EXECUTED**
buster-report : 1.1.7 (2018)
Percentile statistics : 20191225.v01 (using entries in the PDB archive December 25th 2019)
Ideal geometry (proteins) : Engh & Huber (2001)
Ideal geometry (DNA, RNA) : Parkinson et al. (1996)
Validation Pipeline (wwPDB-VP) : 2.11

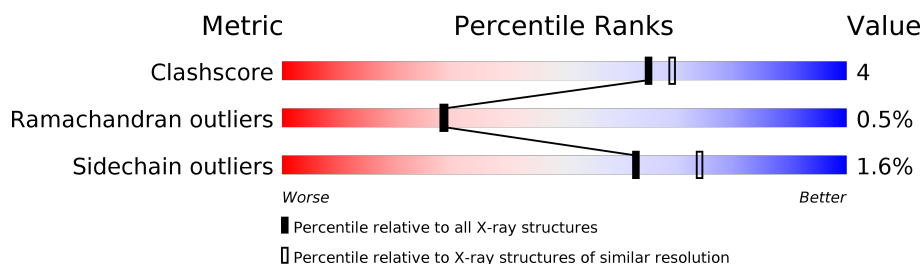
1 Overall quality at a glance

The following experimental techniques were used to determine the structure:

X-RAY DIFFRACTION

The reported resolution of this entry is 2.18 Å.



Percentile scores (ranging between 0-100) for global validation metrics of the entry are shown in the following graphic. The table shows the number of entries on which the scores are based.



Metric	Whole archive (#Entries)	Similar resolution (#Entries, resolution range(Å))
Clashscore	141614	7689 (2.20-2.16)
Ramachandran outliers	138981	7564 (2.20-2.16)
Sidechain outliers	138945	7564 (2.20-2.16)

The table below summarises the geometric issues observed across the polymeric chains and their fit to the electron density. The red, orange, yellow and green segments on the lower bar indicate the fraction of residues that contain outliers for ≥ 3 , 2, 1 and 0 types of geometric quality criteria respectively. A grey segment represents the fraction of residues that are not modelled. The numeric value for each fraction is indicated below the corresponding segment, with a dot representing fractions $\leq 5\%$.

Note EDS was not executed.

Mol	Chain	Length	Quality of chain
1	A	404	
1	B	404	

The following table lists non-polymeric compounds, carbohydrate monomers and non-standard residues in protein, DNA, RNA chains that are outliers for geometric or electron-density-fit criteria:

Mol	Type	Chain	Res	Chirality	Geometry	Clashes	Electron density
2	PPJ	B	405	X	-	-	-

2 Entry composition [i](#)

There are 5 unique types of molecules in this entry. The entry contains 6933 atoms, of which 0 are hydrogens and 0 are deuteriums.

In the tables below, the ZeroOcc column contains the number of atoms modelled with zero occupancy, the AltConf column contains the number of residues with at least one atom in alternate conformation and the Trace column contains the number of residues modelled with at most 2 atoms.

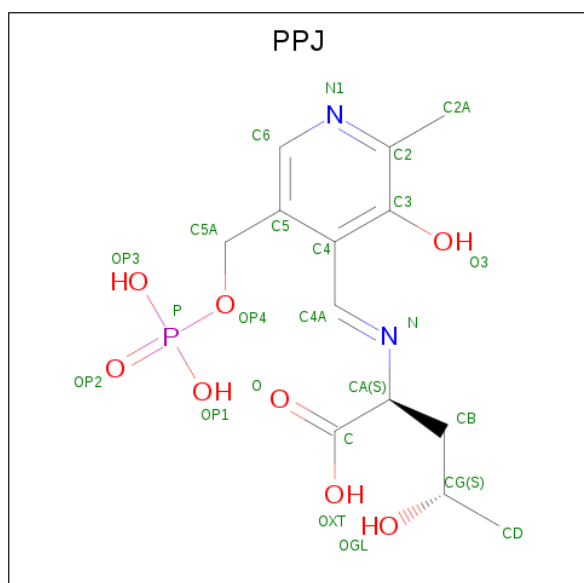
- Molecule 1 is a protein called METHIONINE GAMMA-LYASE.

Mol	Chain	Residues	Atoms					ZeroOcc	AltConf	Trace
1	A	394	Total	C	N	O	S	0	7	0
			2999	1898	507	569	25			
1	B	393	Total	C	N	O	S	0	12	0
			3004	1897	509	574	24			

There are 4 discrepancies between the modelled and reference sequences:

Chain	Residue	Modelled	Actual	Comment	Reference
A	2	ALA	SER	cloning artifact	UNP O15564
A	308	TYR	SER	cloning artifact	UNP O15564
B	2	ALA	SER	cloning artifact	UNP O15564
B	308	TYR	SER	cloning artifact	UNP O15564

- Molecule 2 is N-(HYDROXY{3-HYDROXY-2-METHYL-5-[(PHOSPHONOXY)METHYL]PYRIDIN-4-YL}METHYL)NORVALINE (three-letter code: PPJ) (formula: C₁₃H₁₉N₂O₈P).



Mol	Chain	Residues	Atoms					ZeroOcc	AltConf
2	A	1	Total	C	N	O	P	0	0
			23	13	2	7	1		
2	B	1	Total	C	N	O	P	0	0
			23	13	2	7	1		

- Molecule 3 is SULFATE ION (three-letter code: SO4) (formula: O₄S).



Mol	Chain	Residues	Atoms			ZeroOcc	AltConf
3	A	1	Total	O	S	0	0
			5	4	1		
3	A	1	Total	O	S	0	0
			5	4	1		
3	B	1	Total	O	S	0	0
			5	4	1		
3	B	1	Total	O	S	0	0
			5	4	1		
3	B	1	Total	O	S	0	0
			5	4	1		

- Molecule 4 is GLYCEROL (three-letter code: GOL) (formula: C₃H₈O₃).



Mol	Chain	Residues	Atoms			ZeroOcc	AltConf
4	A	1	Total	C	O	0	0
			6	3	3		
4	B	1	Total	C	O	0	0
			6	3	3		

- Molecule 5 is water.


Mol	Chain	Residues	Atoms		ZeroOcc	AltConf
5	A	428	Total	O	0	0
			428	428		
5	B	419	Total	O	0	0
			419	419		

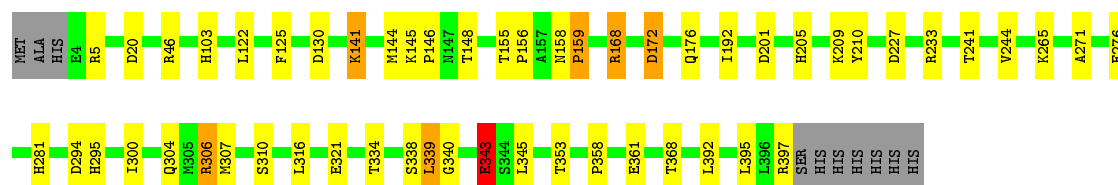
3 Residue-property plots

These plots are drawn for all protein, RNA and DNA chains in the entry. The first graphic for a chain summarises the proportions of the various outlier classes displayed in the second graphic. The second graphic shows the sequence view annotated by issues in geometry. Residues are color-coded according to the number of geometric quality criteria for which they contain at least one outlier: green = 0, yellow = 1, orange = 2 and red = 3 or more. Stretches of 2 or more consecutive residues without any outlier are shown as a green connector. Residues present in the sample, but not in the model, are shown in grey.


Note EDS was not executed.

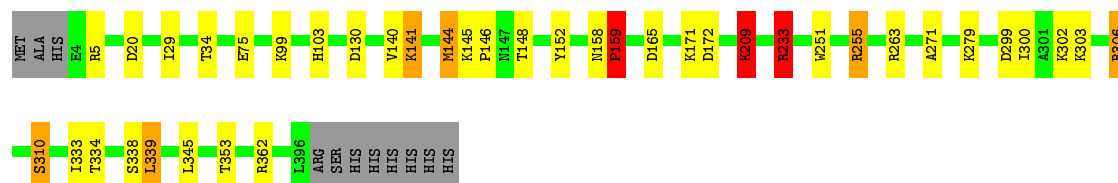
• Molecule 1: METHIONINE GAMMA-LYASE

Chain A: 



• Molecule 1: METHIONINE GAMMA-LYASE

Chain B: 



4 Data and refinement statistics

Xtriage (Phenix) and EDS were not executed - this section is therefore incomplete.

Property	Value	Source
Space group	P 31 1 2	Depositor
Cell constants a, b, c, α , β , γ	88.26 Å 88.26 Å 217.85 Å 90.00° 90.00° 120.00°	Depositor
Resolution (Å)	25.00 – 2.18	Depositor
% Data completeness (in resolution range)	97.6 (25.00-2.18)	Depositor
R_{merge}	(Not available)	Depositor
R_{sym}	0.04	Depositor
Refinement program	REFMAC	Depositor
R, R_{free}	0.140 , 0.193	Depositor
Estimated twinning fraction	No twinning to report.	Xtriage
Total number of atoms	6933	wwPDB-VP
Average B, all atoms (Å ²)	25.0	wwPDB-VP

5 Model quality [i](#)

5.1 Standard geometry [i](#)

Bond lengths and bond angles in the following residue types are not validated in this section: GOL, SO4, PPJ

The Z score for a bond length (or angle) is the number of standard deviations the observed value is removed from the expected value. A bond length (or angle) with $|Z| > 5$ is considered an outlier worth inspection. RMSZ is the root-mean-square of all Z scores of the bond lengths (or angles).

Mol	Chain	Bond lengths		Bond angles	
		RMSZ	# Z >5	RMSZ	# Z >5
1	A	0.60	0/3089	1.29	22/4180 (0.5%)
1	B	0.59	0/3123	1.34	23/4228 (0.5%)
All	All	0.60	0/6212	1.31	45/8408 (0.5%)

Chiral center outliers are detected by calculating the chiral volume of a chiral center and verifying if the center is modelled as a planar moiety or with the opposite hand. A planarity outlier is detected by checking planarity of atoms in a peptide group, atoms in a mainchain group or atoms of a sidechain that are expected to be planar.

Mol	Chain	#Chirality outliers	#Planarity outliers
1	A	0	2
1	B	0	1
All	All	0	3

There are no bond length outliers.

The worst 5 of 45 bond angle outliers are listed below:

Mol	Chain	Res	Type	Atoms	Z	Observed(°)	Ideal(°)
1	B	306	ARG	NE-CZ-NH1	12.96	126.78	120.30
1	B	306	ARG	CD-NE-CZ	12.73	141.42	123.60
1	B	306	ARG	NE-CZ-NH2	-12.51	114.05	120.30
1	B	233	ARG	NE-CZ-NH2	12.30	126.45	120.30
1	A	306	ARG	NE-CZ-NH1	10.68	125.64	120.30

There are no chirality outliers.

All (3) planarity outliers are listed below:

Mol	Chain	Res	Type	Group
1	A	241	THR	Mainchain

Continued on next page...

Continued from previous page...

Mol	Chain	Res	Type	Group
1	A	368	THR	Mainchain
1	B	34	THR	Mainchain

5.2 Too-close contacts

In the following table, the Non-H and H(model) columns list the number of non-hydrogen atoms and hydrogen atoms in the chain respectively. The H(added) column lists the number of hydrogen atoms added and optimized by MolProbity. The Clashes column lists the number of clashes within the asymmetric unit, whereas Symm-Clashes lists symmetry related clashes.

Mol	Chain	Non-H	H(model)	H(added)	Clashes	Symm-Clashes
1	A	2999	0	3004	26	0
1	B	3004	0	2989	22	0
2	A	23	0	13	2	0
2	B	23	0	12	3	0
3	A	10	0	0	0	0
3	B	15	0	0	1	0
4	A	6	0	8	2	0
4	B	6	0	8	2	0
5	A	428	0	0	2	0
5	B	419	0	0	6	0
All	All	6933	0	6034	50	0

The all-atom clashscore is defined as the number of clashes found per 1000 atoms (including hydrogen atoms). The all-atom clashscore for this structure is 4.

The worst 5 of 50 close contacts within the same asymmetric unit are listed below, sorted by their clash magnitude.

Atom-1	Atom-2	Interatomic distance (Å)	Clash overlap (Å)
1:B:145[A]:LYS:NZ	5:B:2205:HOH:O	1.86	1.08
1:A:265:LYS:HG2	1:A:307[B]:MET:HE1	1.72	0.72
1:B:279:LYS:NZ	3:B:407:SO4:O3	2.27	0.67
1:B:353:THR:HG22	2:B:405:PPJ:HC3	1.76	0.66
1:A:265:LYS:HA	1:A:307[B]:MET:CE	2.27	0.63

There are no symmetry-related clashes.

5.3 Torsion angles

5.3.1 Protein backbone

In the following table, the Percentiles column shows the percent Ramachandran outliers of the chain as a percentile score with respect to all X-ray entries followed by that with respect to entries of similar resolution.

The Analysed column shows the number of residues for which the backbone conformation was analysed, and the total number of residues.

Mol	Chain	Analysed	Favoured	Allowed	Outliers	Percentiles	
1	A	399/404 (99%)	387 (97%)	10 (2%)	2 (0%)	29	28
1	B	403/404 (100%)	392 (97%)	9 (2%)	2 (0%)	29	28
All	All	802/808 (99%)	779 (97%)	19 (2%)	4 (0%)	29	28

All (4) Ramachandran outliers are listed below:

Mol	Chain	Res	Type
1	A	295	HIS
1	B	338	SER
1	A	338	SER
1	B	209	LYS

5.3.2 Protein sidechains

In the following table, the Percentiles column shows the percent sidechain outliers of the chain as a percentile score with respect to all X-ray entries followed by that with respect to entries of similar resolution.

The Analysed column shows the number of residues for which the sidechain conformation was analysed, and the total number of residues.

Mol	Chain	Analysed	Rotameric	Outliers	Percentiles	
1	A	326/334 (98%)	321 (98%)	5 (2%)	65	76
1	B	330/334 (99%)	323 (98%)	7 (2%)	53	64
All	All	656/668 (98%)	644 (98%)	12 (2%)	62	70

5 of 12 residues with a non-rotameric sidechain are listed below:

Mol	Chain	Res	Type
1	B	141[A]	LYS
1	B	141[B]	LYS

Continued on next page...

Continued from previous page...

Mol	Chain	Res	Type
1	B	233	ARG
1	A	343	GLU
1	B	171	LYS

Some sidechains can be flipped to improve hydrogen bonding and reduce clashes. All (1) such sidechains are listed below:

Mol	Chain	Res	Type
1	B	261	ASN

5.3.3 RNA [i](#)

There are no RNA molecules in this entry.

5.4 Non-standard residues in protein, DNA, RNA chains [i](#)

There are no non-standard protein/DNA/RNA residues in this entry.

5.5 Carbohydrates [i](#)

There are no carbohydrates in this entry.

5.6 Ligand geometry [i](#)

9 ligands are modelled in this entry.

In the following table, the Counts columns list the number of bonds (or angles) for which Mogul statistics could be retrieved, the number of bonds (or angles) that are observed in the model and the number of bonds (or angles) that are defined in the Chemical Component Dictionary. The Link column lists molecule types, if any, to which the group is linked. The Z score for a bond length (or angle) is the number of standard deviations the observed value is removed from the expected value. A bond length (or angle) with $|Z| > 2$ is considered an outlier worth inspection. RMSZ is the root-mean-square of all Z scores of the bond lengths (or angles).

Mol	Type	Chain	Res	Link	Bond lengths			Bond angles		
					Counts	RMSZ	$\# Z > 2$	Counts	RMSZ	$\# Z > 2$
3	SO4	B	406	-	4,4,4	0.52	0	6,6,6	0.40	0
4	GOL	B	412	-	5,5,5	0.84	0	5,5,5	0.88	0
3	SO4	B	407	-	4,4,4	0.74	0	6,6,6	0.39	0
3	SO4	A	408	-	4,4,4	0.68	0	6,6,6	0.32	0
4	GOL	A	411	-	5,5,5	0.72	0	5,5,5	0.51	0

Mol	Type	Chain	Res	Link	Bond lengths			Bond angles		
					Counts	RMSZ	# Z > 2	Counts	RMSZ	# Z > 2
3	SO4	A	409	-	4,4,4	0.58	0	6,6,6	0.32	0
3	SO4	B	410	-	4,4,4	0.68	0	6,6,6	0.32	0
2	PPJ	B	405	1	20,23,24	3.40	8 (40%)	24,32,34	2.78	9 (37%)
2	PPJ	A	405	1	20,23,24	3.30	7 (35%)	24,32,34	2.25	6 (25%)

In the following table, the Chirals column lists the number of chiral outliers, the number of chiral centers analysed, the number of these observed in the model and the number defined in the Chemical Component Dictionary. Similar counts are reported in the Torsion and Rings columns. '-' means no outliers of that kind were identified.

Mol	Type	Chain	Res	Link	Chirals	Torsions	Rings
2	PPJ	B	405	1	1/1/3/5	3/14/18/19	0/1/1/1
4	GOL	B	412	-	-	4/4/4/4	-
4	GOL	A	411	-	-	4/4/4/4	-
2	PPJ	A	405	1	-	3/14/18/19	0/1/1/1

The worst 5 of 15 bond length outliers are listed below:

Mol	Chain	Res	Type	Atoms	Z	Observed(Å)	Ideal(Å)
2	A	405	PPJ	CA-N	-10.00	1.36	1.46
2	B	405	PPJ	CA-N	-9.30	1.37	1.46
2	B	405	PPJ	C4A-N	7.45	1.41	1.27
2	A	405	PPJ	C2A-C2	-5.57	1.41	1.50
2	B	405	PPJ	CB-CA	-5.18	1.46	1.53

The worst 5 of 15 bond angle outliers are listed below:

Mol	Chain	Res	Type	Atoms	Z	Observed(°)	Ideal(°)
2	B	405	PPJ	C4-C4A-N	-7.26	106.89	123.01
2	B	405	PPJ	C4-C3-C2	5.83	123.80	120.19
2	A	405	PPJ	CA-N-C4A	5.46	124.80	117.40
2	A	405	PPJ	C4-C3-C2	4.92	123.23	120.19
2	B	405	PPJ	C3-C4-C5	-4.35	114.92	118.26

All (1) chirality outliers are listed below:

Mol	Chain	Res	Type	Atom
2	B	405	PPJ	CG

5 of 14 torsion outliers are listed below:

Mol	Chain	Res	Type	Atoms
4	B	412	GOL	C1-C2-C3-O3
4	A	411	GOL	O1-C1-C2-C3
2	A	405	PPJ	CB-CA-N-C4A
2	A	405	PPJ	C-CA-N-C4A
2	B	405	PPJ	CA-CB-CG-CD

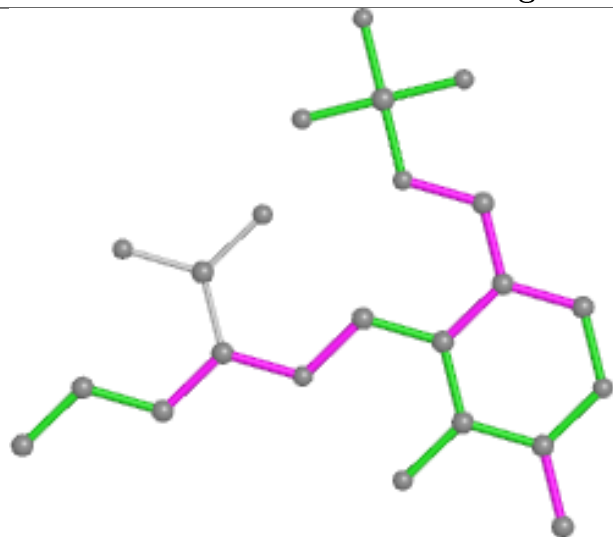
There are no ring outliers.

5 monomers are involved in 10 short contacts:

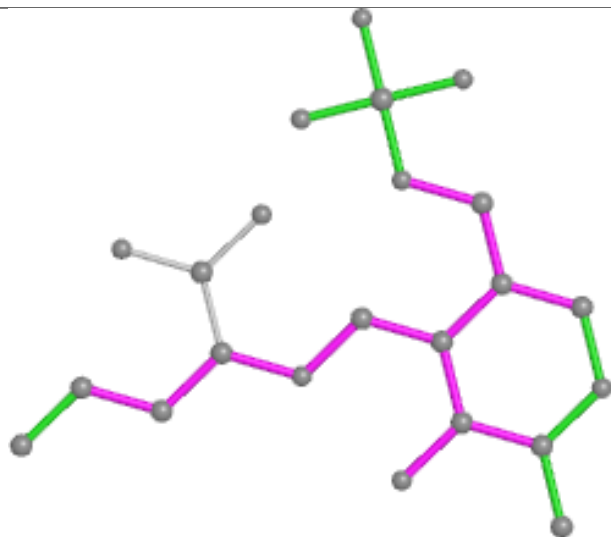
Mol	Chain	Res	Type	Clashes	Symm-Clashes
4	B	412	GOL	2	0
3	B	407	SO4	1	0
4	A	411	GOL	2	0
2	B	405	PPJ	3	0
2	A	405	PPJ	2	0

The following is a two-dimensional graphical depiction of Mogul quality analysis of bond lengths, bond angles, torsion angles, and ring geometry for all instances of the Ligand of Interest. In addition, ligands with molecular weight > 250 and outliers as shown on the validation Tables will also be included. For torsion angles, if less than 5% of the Mogul distribution of torsion angles is within 10 degrees of the torsion angle in question, then that torsion angle is considered an outlier. Any bond that is central to one or more torsion angles identified as an outlier by Mogul will be highlighted in the graph. For rings, the root-mean-square deviation (RMSD) between the ring in question and similar rings identified by Mogul is calculated over all ring torsion angles. If the average RMSD is greater than 60 degrees and the minimal RMSD between the ring in question and any Mogul-identified rings is also greater than 60 degrees, then that ring is considered an outlier. The outliers are highlighted in purple. The color gray indicates Mogul did not find sufficient equivalents in the CSD to analyse the geometry.

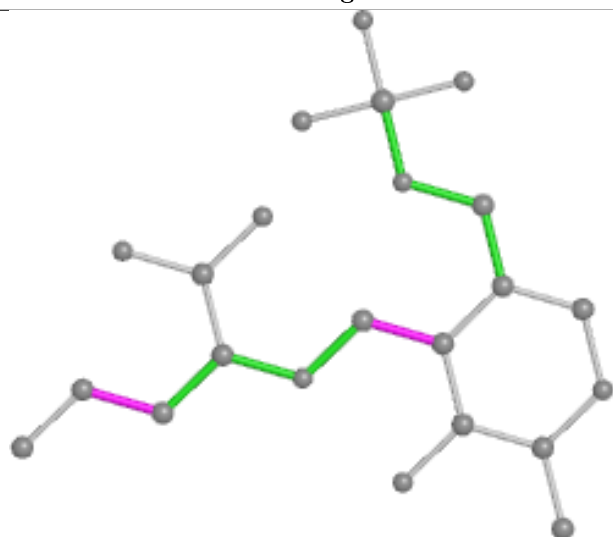
Ligand PPJ B 405



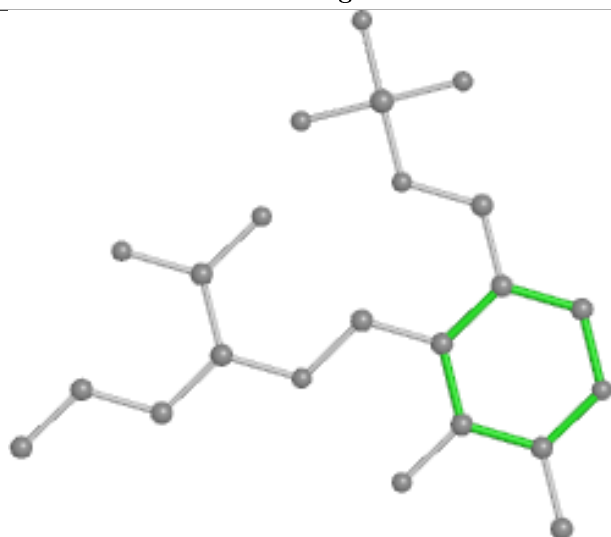
Bond lengths



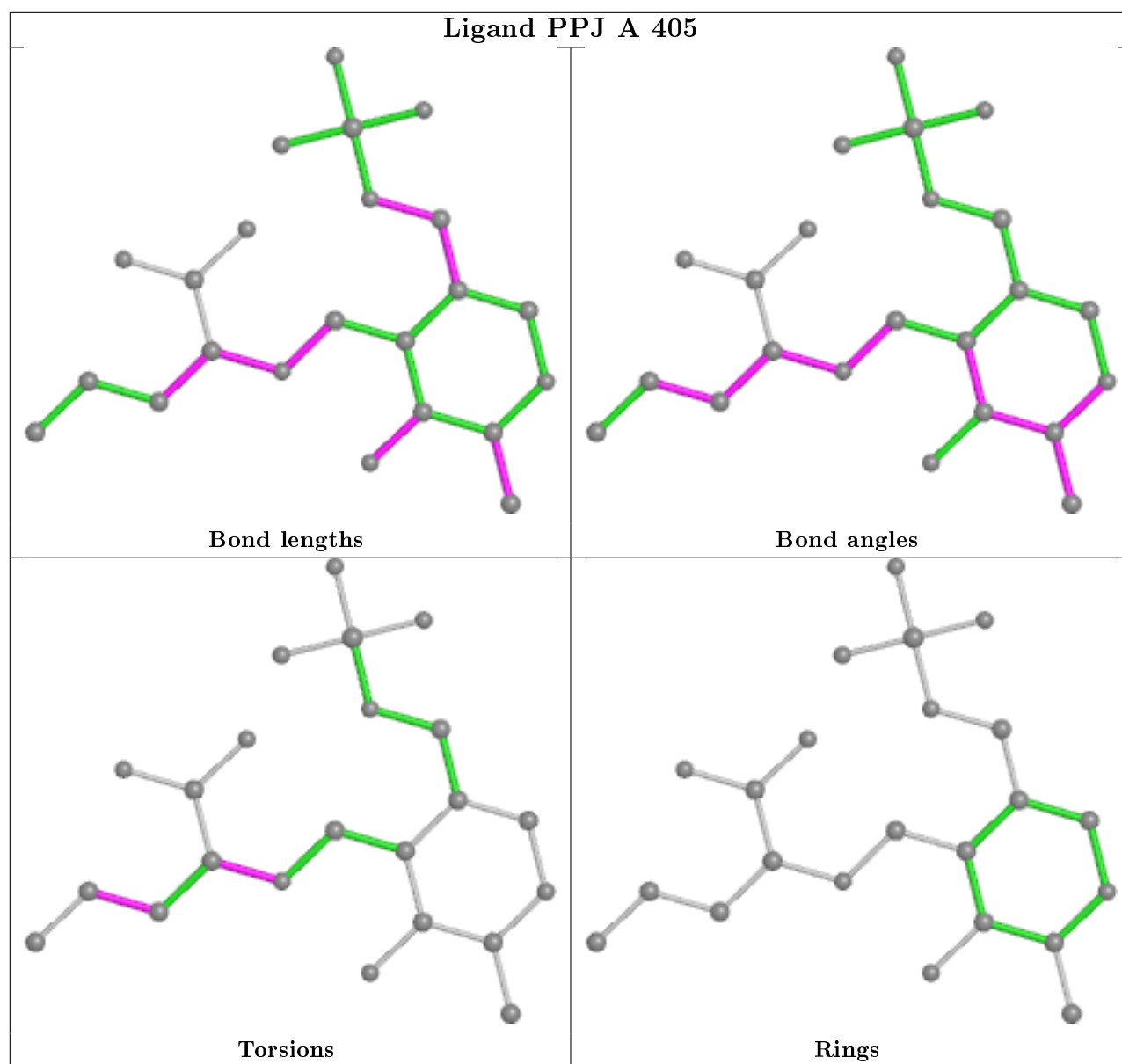
Bond angles



Torsions



Rings



5.7 Other polymers [i](#)

There are no such residues in this entry.

5.8 Polymer linkage issues [i](#)

There are no chain breaks in this entry.

6 Fit of model and data ⓘ

6.1 Protein, DNA and RNA chains ⓘ

EDS was not executed - this section is therefore empty.

6.2 Non-standard residues in protein, DNA, RNA chains ⓘ

EDS was not executed - this section is therefore empty.

6.3 Carbohydrates ⓘ

EDS was not executed - this section is therefore empty.

6.4 Ligands ⓘ

EDS was not executed - this section is therefore empty.

6.5 Other polymers ⓘ

EDS was not executed - this section is therefore empty.