



# Full wwPDB X-ray Structure Validation Report ⓘ

Jun 15, 2020 – 11:43 pm BST

PDB ID : 5E5G  
Title : 3-deoxy-D-arabino-heptulosonate 7-phosphate synthase with D-tryptophan bound in the tryptophan and phenylalanine binding sites  
Authors : Reichau, S.; Jiao, W.; Parker, E.J.  
Deposited on : 2015-10-08  
Resolution : 1.95 Å(reported)

This is a Full wwPDB X-ray Structure Validation Report for a publicly released PDB entry.

We welcome your comments at [validation@mail.wwpdb.org](mailto:validation@mail.wwpdb.org)

A user guide is available at

<https://www.wwpdb.org/validation/2017/XrayValidationReportHelp>

with specific help available everywhere you see the ⓘ symbol.

---

The following versions of software and data (see [references ⓘ](#)) were used in the production of this report:

MolProbity : 4.02b-467  
Mogul : 1.8.5 (274361), CSD as541be (2020)  
Xtriage (Phenix) : 1.13  
EDS : 2.11  
Percentile statistics : 20191225.v01 (using entries in the PDB archive December 25th 2019)  
Refmac : 5.8.0158  
CCP4 : 7.0.044 (Gargrove)  
Ideal geometry (proteins) : Engh & Huber (2001)  
Ideal geometry (DNA, RNA) : Parkinson et al. (1996)  
Validation Pipeline (wwPDB-VP) : 2.11

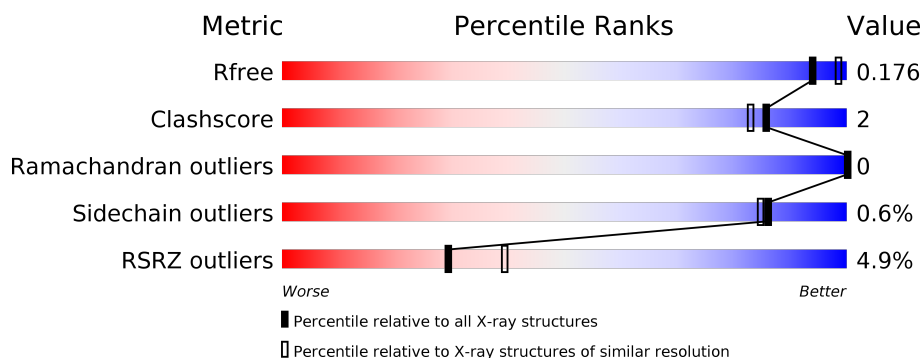
# 1 Overall quality at a glance

The following experimental techniques were used to determine the structure:

## *X-RAY DIFFRACTION*

The reported resolution of this entry is 1.95 Å.

Percentile scores (ranging between 0-100) for global validation metrics of the entry are shown in the following graphic. The table shows the number of entries on which the scores are based.



Metric	Whole archive (#Entries)	Similar resolution (#Entries, resolution range(Å))
$R_{free}$	130704	2580 (1.96-1.96)
Clashscore	141614	2705 (1.96-1.96)
Ramachandran outliers	138981	2678 (1.96-1.96)
Sidechain outliers	138945	2678 (1.96-1.96)
RSRZ outliers	127900	2539 (1.96-1.96)

The table below summarises the geometric issues observed across the polymeric chains and their fit to the electron density. The red, orange, yellow and green segments on the lower bar indicate the fraction of residues that contain outliers for  $\geq 3$ , 2, 1 and 0 types of geometric quality criteria respectively. A grey segment represents the fraction of residues that are not modelled. The numeric value for each fraction is indicated below the corresponding segment, with a dot representing fractions  $\leq 5\%$ . The upper red bar (where present) indicates the fraction of residues that have poor fit to the electron density. The numeric value is given above the bar.

Mol	Chain	Length	Quality of chain
1	A	464	<div> <div>5%</div> <div> <div></div> <div>94%</div> <div>5%</div> </div> </div>
1	B	464	<div> <div>5%</div> <div> <div></div> <div>93%</div> <div>5%</div> </div> </div>

## 2 Entry composition [i](#)

There are 5 unique types of molecules in this entry. The entry contains 7755 atoms, of which 0 are hydrogens and 0 are deuteriums.

In the tables below, the ZeroOcc column contains the number of atoms modelled with zero occupancy, the AltConf column contains the number of residues with at least one atom in alternate conformation and the Trace column contains the number of residues modelled with at most 2 atoms.

- Molecule 1 is a protein called 3-deoxy-D-arabinoheptulosonate-7-phosphate synthase.

Mol	Chain	Residues	Atoms					ZeroOcc	AltConf	Trace
1	A	458	Total	C	N	O	S	0	3	0
			3512	2194	639	661	18			
1	B	456	Total	C	N	O	S	0	3	0
			3508	2192	638	660	18			

There are 4 discrepancies between the modelled and reference sequences:

Chain	Residue	Modelled	Actual	Comment	Reference
A	-1	GLY	-	expression tag	UNP A0A0E8NFD1
A	0	ALA	-	expression tag	UNP A0A0E8NFD1
B	-1	GLY	-	expression tag	UNP A0A0E8NFD1
B	0	ALA	-	expression tag	UNP A0A0E8NFD1

- Molecule 2 is SULFATE ION (three-letter code: SO4) (formula: O<sub>4</sub>S).

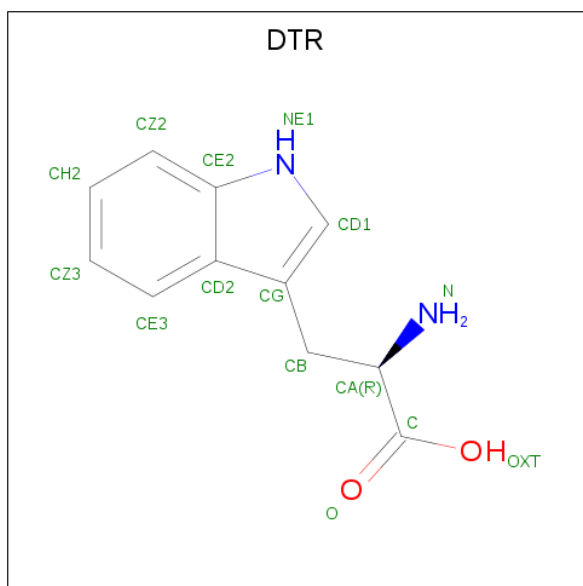


Mol	Chain	Residues	Atoms	ZeroOcc	AltConf
2	A	1	Total O S 5 4 1	0	0
2	B	1	Total O S 5 4 1	0	0
2	B	1	Total O S 5 4 1	0	0
2	B	1	Total O S 5 4 1	0	0
2	B	1	Total O S 5 4 1	0	0

- Molecule 3 is MANGANESE (II) ION (three-letter code: MN) (formula: Mn).

Mol	Chain	Residues	Atoms	ZeroOcc	AltConf
3	B	1	Total Mn 1 1	0	0
3	A	1	Total Mn 1 1	0	0

- Molecule 4 is D-TRYPTOPHAN (three-letter code: DTR) (formula: C<sub>11</sub>H<sub>12</sub>N<sub>2</sub>O<sub>2</sub>).



Mol	Chain	Residues	Atoms	ZeroOcc	AltConf
4	A	1	Total C N O 15 11 2 2	0	0
4	A	1	Total C N O 15 11 2 2	0	0
4	B	1	Total C N O 15 11 2 2	0	0

*Continued on next page...*

*Continued from previous page...*

Mol	Chain	Residues	Atoms				ZeroOcc	AltConf
4	B	1	Total	C	N	O	0	0
			15	11	2	2		

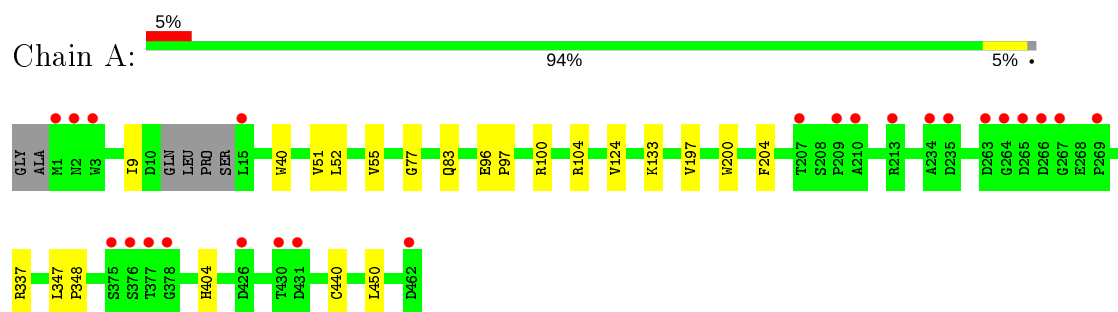
- Molecule 5 is water.

Mol	Chain	Residues	Atoms		ZeroOcc	AltConf
5	A	286	Total	O	0	0
			286	286		
5	B	362	Total	O	0	0
			362	362		

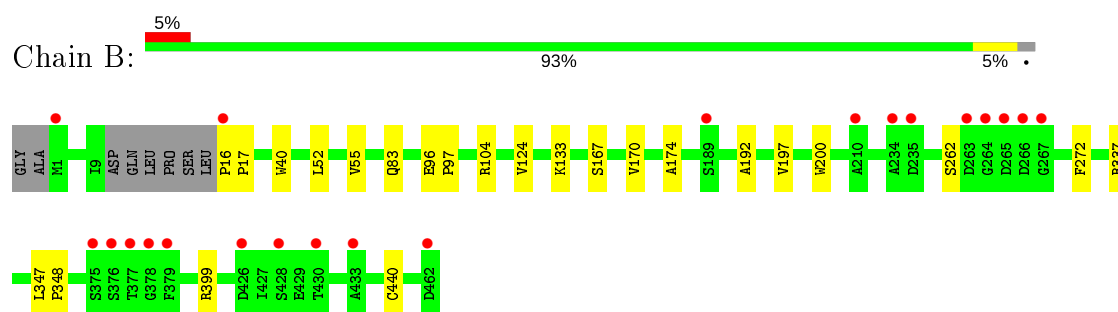
### 3 Residue-property plots [i](#)

These plots are drawn for all protein, RNA and DNA chains in the entry. The first graphic for a chain summarises the proportions of the various outlier classes displayed in the second graphic. The second graphic shows the sequence view annotated by issues in geometry and electron density. Residues are color-coded according to the number of geometric quality criteria for which they contain at least one outlier: green = 0, yellow = 1, orange = 2 and red = 3 or more. A red dot above a residue indicates a poor fit to the electron density ( $RSRZ > 2$ ). Stretches of 2 or more consecutive residues without any outlier are shown as a green connector. Residues present in the sample, but not in the model, are shown in grey.

- Molecule 1: 3-deoxy-D-arabinoheptulosonate-7-phosphate synthase



- Molecule 1: 3-deoxy-D-arabinoheptulosonate-7-phosphate synthase



## 4 Data and refinement statistics

Property	Value	Source
Space group	P 32 2 1	Depositor
Cell constants a, b, c, $\alpha$ , $\beta$ , $\gamma$	205.00 Å   205.00 Å   66.54 Å 90.00°   90.00°   120.00°	Depositor
Resolution (Å)	47.25 – 1.95 47.25 – 1.95	Depositor EDS
% Data completeness (in resolution range)	100.0 (47.25-1.95) 100.0 (47.25-1.95)	Depositor EDS
$R_{merge}$	0.15	Depositor
$R_{sym}$	(Not available)	Depositor
$\langle I/\sigma(I) \rangle$ <sup>1</sup>	2.88 (at 1.95 Å)	Xtriage
Refinement program	REFMAC 5.8.0131	Depositor
R, $R_{free}$	0.168 , 0.184 0.161 , 0.176	Depositor DCC
$R_{free}$ test set	5798 reflections (4.98%)	wwPDB-VP
Wilson B-factor (Å <sup>2</sup> )	27.0	Xtriage
Anisotropy	0.249	Xtriage
Bulk solvent $k_{sol}$ (e/Å <sup>3</sup> ), $B_{sol}$ (Å <sup>2</sup> )	0.36 , 49.5	EDS
L-test for twinning <sup>2</sup>	$\langle  L  \rangle = 0.48$ , $\langle L^2 \rangle = 0.30$	Xtriage
Estimated twinning fraction	0.031 for -h,-k,l	Xtriage
$F_o, F_c$ correlation	0.96	EDS
Total number of atoms	7755	wwPDB-VP
Average B, all atoms (Å <sup>2</sup> )	31.0	wwPDB-VP

Xtriage's analysis on translational NCS is as follows: *The largest off-origin peak in the Patterson function is 2.72% of the height of the origin peak. No significant pseudotranslation is detected.*

<sup>1</sup>Intensities estimated from amplitudes.

<sup>2</sup>Theoretical values of  $\langle |L| \rangle$ ,  $\langle L^2 \rangle$  for acentric reflections are 0.5, 0.333 respectively for untwinned datasets, and 0.375, 0.2 for perfectly twinned datasets.

## 5 Model quality

### 5.1 Standard geometry

Bond lengths and bond angles in the following residue types are not validated in this section: DTR, MN, SO4

The Z score for a bond length (or angle) is the number of standard deviations the observed value is removed from the expected value. A bond length (or angle) with  $|Z| > 5$  is considered an outlier worth inspection. RMSZ is the root-mean-square of all Z scores of the bond lengths (or angles).

Mol	Chain	Bond lengths		Bond angles	
		RMSZ	$\# Z  > 5$	RMSZ	$\# Z  > 5$
1	A	0.23	0/3584	0.39	0/4879
1	B	0.25	0/3583	0.40	0/4875
All	All	0.24	0/7167	0.39	0/9754

There are no bond length outliers.

There are no bond angle outliers.

There are no chirality outliers.

There are no planarity outliers.

### 5.2 Too-close contacts

In the following table, the Non-H and H(model) columns list the number of non-hydrogen atoms and hydrogen atoms in the chain respectively. The H(added) column lists the number of hydrogen atoms added and optimized by MolProbity. The Clashes column lists the number of clashes within the asymmetric unit, whereas Symm-Clashes lists symmetry related clashes.

Mol	Chain	Non-H	H(model)	H(added)	Clashes	Symm-Clashes
1	A	3512	0	3434	13	0
1	B	3508	0	3441	17	0
2	A	5	0	0	0	0
2	B	20	0	0	1	0
3	A	1	0	0	0	0
3	B	1	0	0	0	0
4	A	30	0	22	2	0
4	B	30	0	22	1	0
5	A	286	0	0	2	0
5	B	362	0	0	2	0
All	All	7755	0	6919	31	0



The all-atom clashscore is defined as the number of clashes found per 1000 atoms (including hydrogen atoms). The all-atom clashscore for this structure is 2.

All (31) close contacts within the same asymmetric unit are listed below, sorted by their clash magnitude.

Atom-1	Atom-2	Interatomic distance (Å)	Clash overlap (Å)
1:B:96[B]:GLU:OE1	5:B:602:HOH:O	1.56	1.23
1:A:133:LYS:NZ	1:A:440:CYS:SG	2.42	0.93
1:B:399[B]:ARG:NH1	5:B:603:HOH:O	2.11	0.82
1:B:167:SER:O	1:B:170:VAL:HG22	1.95	0.66
4:A:504:DTR:OXT	5:A:601:HOH:O	2.15	0.60
1:A:96[B]:GLU:HB3	1:A:97:PRO:HD3	1.87	0.56
1:A:96[B]:GLU:OE2	5:A:602:HOH:O	2.18	0.54
1:A:83:GLN:HA	1:A:124:VAL:O	2.09	0.52
1:B:83:GLN:HA	1:B:124:VAL:O	2.10	0.51
1:B:17:PRO:HA	2:B:504:SO4:O4	2.10	0.51
1:A:96[A]:GLU:HB3	1:A:97:PRO:HD3	1.93	0.51
1:B:96[B]:GLU:HB3	1:B:97:PRO:HD3	1.94	0.49
1:B:96[A]:GLU:HB3	1:B:97:PRO:HD3	1.96	0.47
1:B:133:LYS:HD3	1:B:440:CYS:SG	2.56	0.46
1:B:167:SER:O	1:B:170:VAL:CG2	2.64	0.46
1:A:347:LEU:N	1:A:348:PRO:CD	2.79	0.45
1:B:197:VAL:HA	1:B:200:TRP:CE3	2.51	0.45
1:A:197:VAL:HA	1:A:200:TRP:CE3	2.52	0.45
1:B:347:LEU:N	1:B:348:PRO:CD	2.80	0.44
1:B:192:ALA:O	4:B:507:DTR:NE1	2.35	0.43
1:B:104:ARG:HH11	1:B:104:ARG:HG2	1.83	0.43
1:B:52:LEU:O	1:B:55:VAL:HG22	2.19	0.42
4:A:503:DTR:HH2	1:B:174:ALA:HB2	2.00	0.42
1:A:77:GLY:HA2	1:A:404:HIS:CD2	2.54	0.42
1:B:262:SER:HB3	1:B:272:PHE:CE1	2.54	0.42
1:A:204:PHE:CG	1:A:450:LEU:HD23	2.55	0.42
1:A:52:LEU:O	1:A:55:VAL:HG22	2.20	0.41
1:A:96[B]:GLU:OE2	1:A:100[B]:ARG:NH2	2.54	0.41
1:B:16:PRO:HA	1:B:17:PRO:HD3	1.95	0.41
1:A:104:ARG:HG2	1:A:104:ARG:HH11	1.86	0.40
1:A:9:ILE:HG21	1:A:51:VAL:HG21	2.03	0.40

There are no symmetry-related clashes.

## 5.3 Torsion angles

### 5.3.1 Protein backbone

In the following table, the Percentiles column shows the percent Ramachandran outliers of the chain as a percentile score with respect to all X-ray entries followed by that with respect to entries of similar resolution.

The Analysed column shows the number of residues for which the backbone conformation was analysed, and the total number of residues.

Mol	Chain	Analysed	Favoured	Allowed	Outliers	Percentiles	
1	A	457/464 (98%)	449 (98%)	8 (2%)	0	100	100
1	B	455/464 (98%)	446 (98%)	9 (2%)	0	100	100
All	All	912/928 (98%)	895 (98%)	17 (2%)	0	100	100

There are no Ramachandran outliers to report.

### 5.3.2 Protein sidechains

In the following table, the Percentiles column shows the percent sidechain outliers of the chain as a percentile score with respect to all X-ray entries followed by that with respect to entries of similar resolution.

The Analysed column shows the number of residues for which the sidechain conformation was analysed, and the total number of residues.

Mol	Chain	Analysed	Rotameric	Outliers	Percentiles	
1	A	363/376 (96%)	361 (99%)	2 (1%)	86	85
1	B	364/376 (97%)	362 (100%)	2 (0%)	88	88
All	All	727/752 (97%)	723 (99%)	4 (1%)	86	85

All (4) residues with a non-rotameric sidechain are listed below:

Mol	Chain	Res	Type
1	A	40	TRP
1	A	337	ARG
1	B	40	TRP
1	B	337	ARG

Some sidechains can be flipped to improve hydrogen bonding and reduce clashes. There are no such sidechains identified.

### 5.3.3 RNA ⓘ

There are no RNA molecules in this entry.

## 5.4 Non-standard residues in protein, DNA, RNA chains ⓘ

There are no non-standard protein/DNA/RNA residues in this entry.

## 5.5 Carbohydrates ⓘ

There are no carbohydrates in this entry.

## 5.6 Ligand geometry ⓘ

Of 11 ligands modelled in this entry, 2 are monoatomic - leaving 9 for Mogul analysis.

In the following table, the Counts columns list the number of bonds (or angles) for which Mogul statistics could be retrieved, the number of bonds (or angles) that are observed in the model and the number of bonds (or angles) that are defined in the Chemical Component Dictionary. The Link column lists molecule types, if any, to which the group is linked. The Z score for a bond length (or angle) is the number of standard deviations the observed value is removed from the expected value. A bond length (or angle) with  $|Z| > 2$  is considered an outlier worth inspection. RMSZ is the root-mean-square of all Z scores of the bond lengths (or angles).

Mol	Type	Chain	Res	Link	Bond lengths			Bond angles		
					Counts	RMSZ	$\# Z  > 2$	Counts	RMSZ	$\# Z  > 2$
2	SO4	B	503	-	4,4,4	0.32	0	6,6,6	0.06	0
2	SO4	B	501	-	4,4,4	0.29	0	6,6,6	0.08	0
2	SO4	B	504	-	4,4,4	0.34	0	6,6,6	0.16	0
2	SO4	A	501	-	4,4,4	0.32	0	6,6,6	0.09	0
2	SO4	B	502	-	4,4,4	0.30	0	6,6,6	0.09	0

There are no bond length outliers.

There are no bond angle outliers.

There are no chirality outliers.

There are no torsion outliers.

There are no ring outliers.

1 monomer is involved in 1 short contact:

Mol	Chain	Res	Type	Clashes	Symm-Clashes
2	B	504	SO4	1	0

## 5.7 Other polymers

There are no such residues in this entry.

## 5.8 Polymer linkage issues

There are no chain breaks in this entry.

## 6 Fit of model and data ⓘ

### 6.1 Protein, DNA and RNA chains ⓘ

In the following table, the column labelled ‘#RSRZ> 2’ contains the number (and percentage) of RSRZ outliers, followed by percent RSRZ outliers for the chain as percentile scores relative to all X-ray entries and entries of similar resolution. The OWAB column contains the minimum, median, 95<sup>th</sup> percentile and maximum values of the occupancy-weighted average B-factor per residue. The column labelled ‘Q< 0.9’ lists the number of (and percentage) of residues with an average occupancy less than 0.9.

Mol	Chain	Analysed	<RSRZ>	#RSRZ>2		OWAB(Å <sup>2</sup> )	Q<0.9
1	A	458/464 (98%)	0.15	24 (5%)	27 37	15, 31, 55, 103	0
1	B	456/464 (98%)	0.00	21 (4%)	32 42	16, 25, 53, 88	0
All	All	914/928 (98%)	0.08	45 (4%)	29 39	15, 28, 54, 103	0

All (45) RSRZ outliers are listed below:

Mol	Chain	Res	Type	RSRZ
1	A	267	GLY	8.3
1	A	266	ASP	6.8
1	A	3	TRP	6.2
1	A	265	ASP	6.1
1	A	234	ALA	5.0
1	B	376	SER	4.7
1	A	377	THR	4.6
1	A	462	ASP	4.4
1	B	377	THR	4.2
1	A	2	ASN	4.0
1	B	264	GLY	4.0
1	A	264	GLY	4.0
1	B	375	SER	3.8
1	A	430	THR	3.6
1	B	234	ALA	3.6
1	B	1	MET	3.5
1	B	235	ASP	3.4
1	B	462	ASP	3.4
1	A	376	SER	3.4
1	A	269	PRO	3.3
1	B	430	THR	3.3
1	A	1	MET	3.3
1	B	266	ASP	3.2
1	B	378	GLY	3.1

*Continued on next page...*

*Continued from previous page...*

Mol	Chain	Res	Type	RSRZ
1	B	379	PHE	3.0
1	A	426	ASP	3.0
1	B	426	ASP	2.9
1	B	267	GLY	2.9
1	B	428	SER	2.8
1	A	375	SER	2.8
1	B	263	ASP	2.7
1	B	265	ASP	2.7
1	B	433	ALA	2.6
1	A	378	GLY	2.6
1	A	263	ASP	2.6
1	A	209	PRO	2.5
1	A	213	ARG	2.4
1	B	16	PRO	2.4
1	A	235	ASP	2.3
1	A	15	LEU	2.3
1	B	210	ALA	2.2
1	A	210	ALA	2.2
1	A	207	THR	2.1
1	A	431	ASP	2.1
1	B	189	SER	2.1

## 6.2 Non-standard residues in protein, DNA, RNA chains [i](#)

There are no non-standard protein/DNA/RNA residues in this entry.

## 6.3 Carbohydrates [i](#)

There are no carbohydrates in this entry.

## 6.4 Ligands [i](#)

In the following table, the Atoms column lists the number of modelled atoms in the group and the number defined in the chemical component dictionary. The B-factors column lists the minimum, median, 95<sup>th</sup> percentile and maximum values of B factors of atoms in the group. The column labelled 'Q< 0.9' lists the number of atoms with occupancy less than 0.9.

Mol	Type	Chain	Res	Atoms	RSCC	RSR	B-factors( $\text{\AA}^2$ )	Q<0.9
4	DTR	A	504	15/15	0.92	0.13	30,36,49,50	0
4	DTR	A	503	15/15	0.92	0.11	24,27,30,30	0

*Continued on next page...*

*Continued from previous page...*

Mol	Type	Chain	Res	Atoms	RSCC	RSR	B-factors( $\text{\AA}^2$ )	Q<0.9
2	SO4	B	503	5/5	0.92	0.16	68,71,74,78	0
4	DTR	B	507	15/15	0.93	0.11	30,35,46,47	0
4	DTR	B	506	15/15	0.94	0.10	27,31,36,37	0
2	SO4	B	504	5/5	0.94	0.15	24,31,33,34	5
2	SO4	B	502	5/5	0.99	0.07	25,26,31,32	0
2	SO4	A	501	5/5	1.00	0.07	30,30,31,32	0
3	MN	B	505	1/1	1.00	0.05	22,22,22,22	1
3	MN	A	502	1/1	1.00	0.10	25,25,25,25	1
2	SO4	B	501	5/5	1.00	0.09	26,27,29,31	0

## 6.5 Other polymers [i](#)

There are no such residues in this entry.