



# Full wwPDB X-ray Structure Validation Report ⓘ

Aug 21, 2020 – 11:26 AM BST

PDB ID : 5E5W  
Title : Hemagglutinin-esterase-fusion mutant structure of influenza D virus  
Authors : Song, H.; Qi, J.; Shi, Y.; Gao, G.F.  
Deposited on : 2015-10-09  
Resolution : 2.40 Å(reported)

This is a Full wwPDB X-ray Structure Validation Report for a publicly released PDB entry.

We welcome your comments at [validation@mail.wwpdb.org](mailto:validation@mail.wwpdb.org)

A user guide is available at

<https://www.wwpdb.org/validation/2017/XrayValidationReportHelp>

with specific help available everywhere you see the ⓘ symbol.

---

The following versions of software and data (see [references ⓘ](#)) were used in the production of this report:

MolProbity : 4.02b-467  
Mogul : 1.8.5 (274361), CSD as541be (2020)  
Xtriage (Phenix) : 1.13  
EDS : 2.13.1  
Percentile statistics : 20191225.v01 (using entries in the PDB archive December 25th 2019)  
Refmac : 5.8.0158  
CCP4 : 7.0.044 (Gargrove)  
Ideal geometry (proteins) : Engh & Huber (2001)  
Ideal geometry (DNA, RNA) : Parkinson et al. (1996)  
Validation Pipeline (wwPDB-VP) : 2.13.1

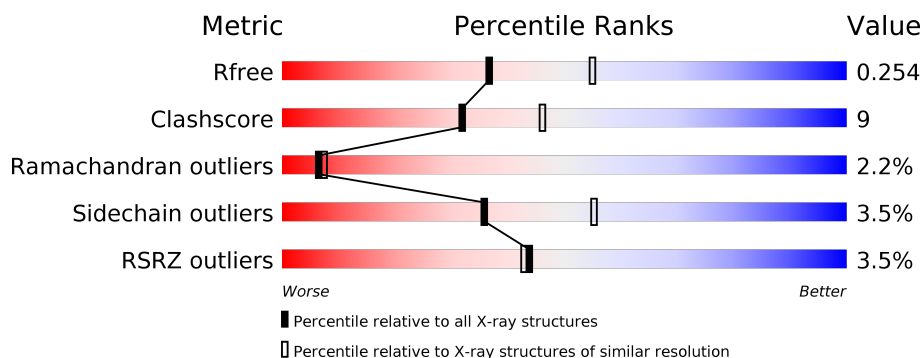
# 1 Overall quality at a glance

The following experimental techniques were used to determine the structure:

## *X-RAY DIFFRACTION*

The reported resolution of this entry is 2.40 Å.

Percentile scores (ranging between 0-100) for global validation metrics of the entry are shown in the following graphic. The table shows the number of entries on which the scores are based.




Metric	Whole archive (#Entries)	Similar resolution (#Entries, resolution range(Å))
$R_{free}$	130704	3907 (2.40-2.40)
Clashscore	141614	4398 (2.40-2.40)
Ramachandran outliers	138981	4318 (2.40-2.40)
Sidechain outliers	138945	4319 (2.40-2.40)
RSRZ outliers	127900	3811 (2.40-2.40)

The table below summarises the geometric issues observed across the polymeric chains and their fit to the electron density. The red, orange, yellow and green segments on the lower bar indicate the fraction of residues that contain outliers for  $\geq 3$ , 2, 1 and 0 types of geometric quality criteria respectively. A grey segment represents the fraction of residues that are not modelled. The numeric value for each fraction is indicated below the corresponding segment, with a dot representing fractions  $\leq 5\%$ . The upper red bar (where present) indicates the fraction of residues that have poor fit to the electron density. The numeric value is given above the bar.

Mol	Chain	Length	Quality of chain
1	A	427	<div> <div>86%</div> <div>12%</div> <div>••</div> </div>
1	C	427	<div> <div>%</div> <div>83%</div> <div>16%</div> <div>•</div> </div>
2	B	157	<div> <div>9%</div> <div>70%</div> <div>20%</div> <div>• • 5%</div> </div>
2	D	157	<div> <div>15%</div> <div>68%</div> <div>20%</div> <div>5% • 5%</div> </div>
3	E	6	<div> <div>17%</div> <div>33%</div> <div>50%</div> </div>
3	F	6	<div> <div>67%</div> <div>33%</div> </div>

*Continued on next page...*

*Continued from previous page...*

Mol	Chain	Length	Quality of chain
3	I	6	 33% 33% 33%
4	G	2	 100%
4	H	2	 100%
4	K	2	 50% 50%
4	L	2	 100%
5	J	3	 33% 67%

## 2 Entry composition [i](#)

There are 7 unique types of molecules in this entry. The entry contains 9639 atoms, of which 0 are hydrogens and 0 are deuteriums.

In the tables below, the ZeroOcc column contains the number of atoms modelled with zero occupancy, the AltConf column contains the number of residues with at least one atom in alternate conformation and the Trace column contains the number of residues modelled with at most 2 atoms.

- Molecule 1 is a protein called Hemagglutinin-esterase.

Mol	Chain	Residues	Atoms					ZeroOcc	AltConf	Trace
1	A	424	Total	C	N	O	S	0	0	0
			3240	2039	540	639	22			
1	C	424	Total	C	N	O	S	0	0	0
			3240	2039	540	639	22			

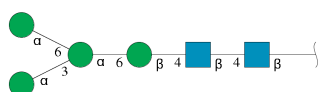
There are 6 discrepancies between the modelled and reference sequences:

Chain	Residue	Modelled	Actual	Comment	Reference
A	57	ALA	SER	engineered mutation	UNP K9LG83
A	356	ALA	ASP	engineered mutation	UNP K9LG83
A	359	ALA	HIS	engineered mutation	UNP K9LG83
C	57	ALA	SER	engineered mutation	UNP K9LG83
C	356	ALA	ASP	engineered mutation	UNP K9LG83
C	359	ALA	HIS	engineered mutation	UNP K9LG83

- Molecule 2 is a protein called Hemagglutinin-esterase.

Mol	Chain	Residues	Atoms					ZeroOcc	AltConf	Trace
2	B	149	Total	C	N	O	S	0	0	0
			1110	695	194	217	4			
2	D	149	Total	C	N	O	S	0	0	0
			1110	695	194	217	4			

- Molecule 3 is an oligosaccharide called alpha-D-mannopyranose-(1-3)-[alpha-D-mannopyranose-(1-6)]alpha-D-mannopyranose-(1-6)-beta-D-mannopyranose-(1-4)-2-acetamido-2-deoxy-beta-D-glucopyranose-(1-4)-2-acetamido-2-deoxy-beta-D-glucopyranose.



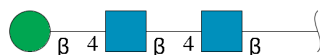
Mol	Chain	Residues	Atoms				ZeroOcc	AltConf	Trace
3	E	6	Total	C	N	O	0	0	0
			72	40	2	30			
3	F	6	Total	C	N	O	0	0	0
			72	40	2	30			
3	I	6	Total	C	N	O	0	0	0
			72	40	2	30			

- Molecule 4 is an oligosaccharide called 2-acetamido-2-deoxy-beta-D-glucopyranose-(1-4)-2-acetamido-2-deoxy-beta-D-glucopyranose.



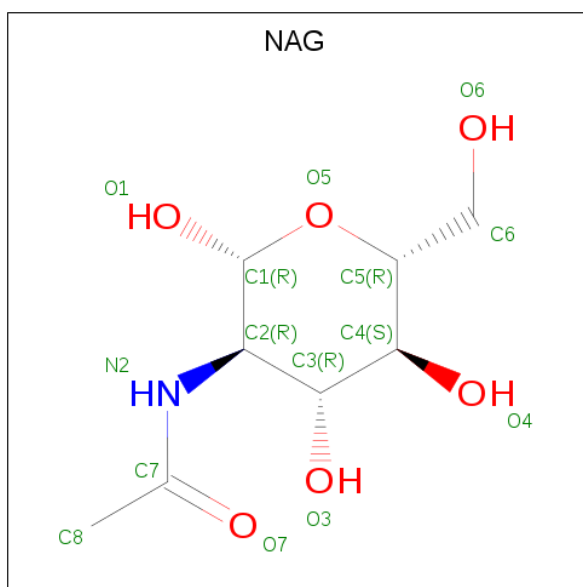
Mol	Chain	Residues	Atoms				ZeroOcc	AltConf	Trace
4	G	2	Total	C	N	O	0	0	0
			28	16	2	10			
4	H	2	Total	C	N	O	0	0	0
			28	16	2	10			
4	K	2	Total	C	N	O	0	0	0
			28	16	2	10			
4	L	2	Total	C	N	O	0	0	0
			28	16	2	10			

- Molecule 5 is an oligosaccharide called beta-D-mannopyranose-(1-4)-2-acetamido-2-deoxy-beta-D-glucopyranose-(1-4)-2-acetamido-2-deoxy-beta-D-glucopyranose.



Mol	Chain	Residues	Atoms				ZeroOcc	AltConf	Trace
5	J	3	Total	C	N	O	0	0	0
			39	22	2	15			

- Molecule 6 is 2-acetamido-2-deoxy-beta-D-glucopyranose (three-letter code: NAG) (formula: C<sub>8</sub>H<sub>15</sub>NO<sub>6</sub>).



Mol	Chain	Residues	Atoms				ZeroOcc	AltConf
6	B	1	Total	C	N	O	0	0
			14	8	1	5		
6	D	1	Total	C	N	O	0	0
			14	8	1	5		

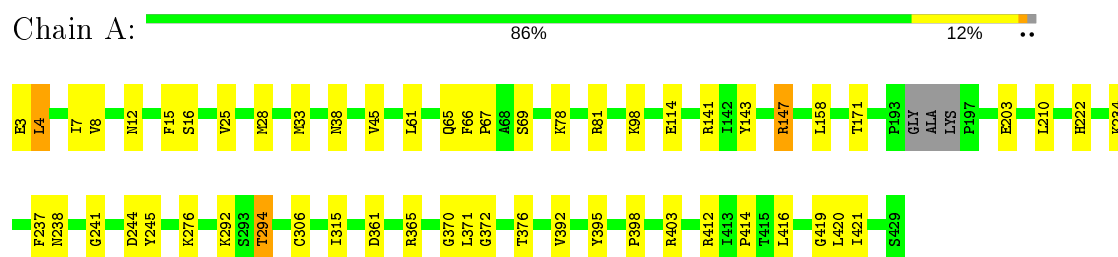
- Molecule 7 is water.

Mol	Chain	Residues	Atoms		ZeroOcc	AltConf
7	A	265	Total	O	0	0
			265	265		
7	B	52	Total	O	0	0
			52	52		
7	C	209	Total	O	0	0
			209	209		
7	D	18	Total	O	0	0
			18	18		

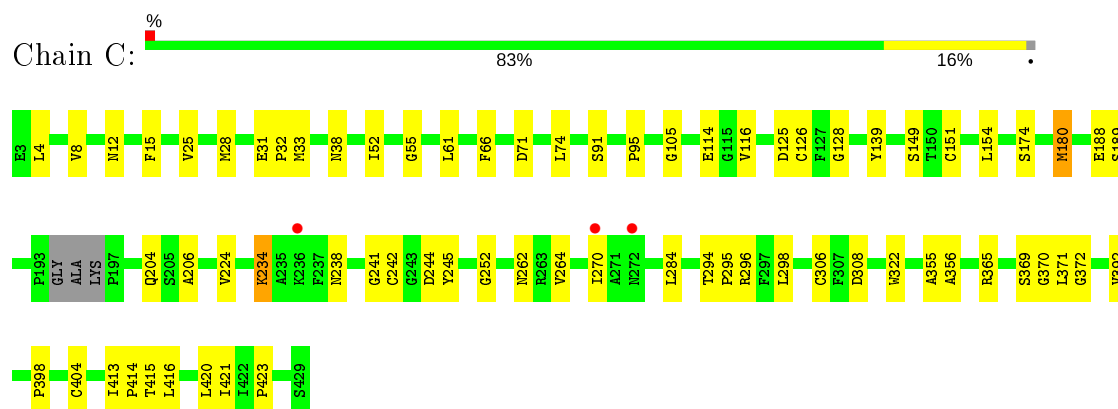
### 3 Residue-property plots

These plots are drawn for all protein, RNA, DNA and oligosaccharide chains in the entry. The first graphic for a chain summarises the proportions of the various outlier classes displayed in the second graphic. The second graphic shows the sequence view annotated by issues in geometry and electron density. Residues are color-coded according to the number of geometric quality criteria for which they contain at least one outlier: green = 0, yellow = 1, orange = 2 and red = 3 or more. A red dot above a residue indicates a poor fit to the electron density ( $RSRZ > 2$ ). Stretches of 2 or more consecutive residues without any outlier are shown as a green connector. Residues present in the sample, but not in the model, are shown in grey.

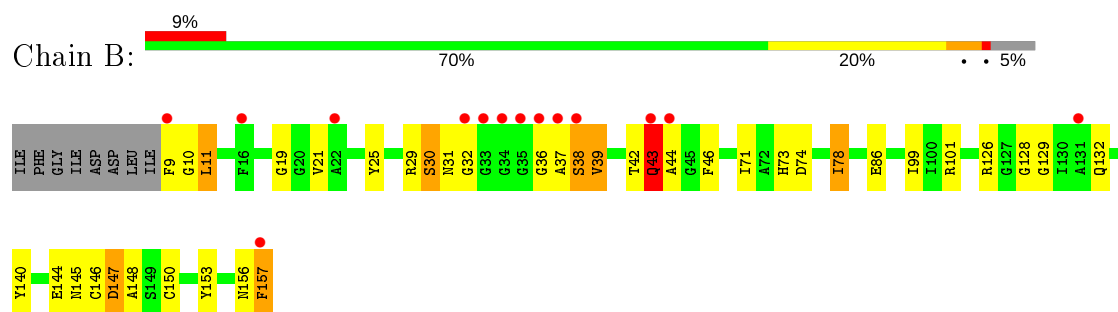
- Molecule 1: Hemagglutinin-esterase



- Molecule 1: Hemagglutinin-esterase

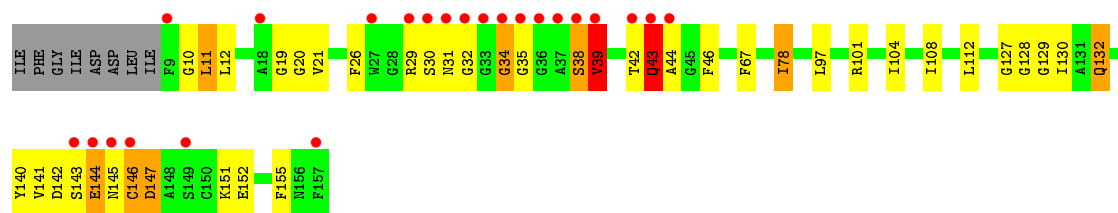


- Molecule 2: Hemagglutinin-esterase



- Molecule 2: Hemagglutinin-esterase





- Molecule 3:  $\alpha$ -D-mannopyranose-(1-3)-[ $\alpha$ -D-mannopyranose-(1-6)] $\alpha$ -D-mannopyranose-(1-6)- $\beta$ -D-mannopyranose-(1-4)-2-acetamido-2-deoxy- $\beta$ -D-glucopyranose-(1-4)-2-acetamido-2-deoxy- $\beta$ -D-glucopyranose

Chain E: 17% 33% 50%



- Molecule 3:  $\alpha$ -D-mannopyranose-(1-3)-[ $\alpha$ -D-mannopyranose-(1-6)] $\alpha$ -D-mannopyranose-(1-6)- $\beta$ -D-mannopyranose-(1-4)-2-acetamido-2-deoxy- $\beta$ -D-glucopyranose-(1-4)-2-acetamido-2-deoxy- $\beta$ -D-glucopyranose

Chain F: 67% 33%



- Molecule 3:  $\alpha$ -D-mannopyranose-(1-3)-[ $\alpha$ -D-mannopyranose-(1-6)] $\alpha$ -D-mannopyranose-(1-6)- $\beta$ -D-mannopyranose-(1-4)-2-acetamido-2-deoxy- $\beta$ -D-glucopyranose-(1-4)-2-acetamido-2-deoxy- $\beta$ -D-glucopyranose

Chain I: 33% 33% 33%



- Molecule 4: 2-acetamido-2-deoxy- $\beta$ -D-glucopyranose-(1-4)-2-acetamido-2-deoxy- $\beta$ -D-glucopyranose

Chain G: 100%




- Molecule 4: 2-acetamido-2-deoxy- $\beta$ -D-glucopyranose-(1-4)-2-acetamido-2-deoxy- $\beta$ -D-glucopyranose

Chain H: 100%



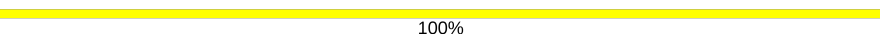


- Molecule 4: 2-acetamido-2-deoxy-beta-D-glucopyranose-(1-4)-2-acetamido-2-deoxy-beta-D-glucopyranose

Chain K:  50% 50%

UAG1  
UAG2

- Molecule 4: 2-acetamido-2-deoxy-beta-D-glucopyranose-(1-4)-2-acetamido-2-deoxy-beta-D-glucopyranose

Chain L:  100%

UAG1  
UAG2

- Molecule 5: beta-D-mannopyranose-(1-4)-2-acetamido-2-deoxy-beta-D-glucopyranose-(1-4)-2-acetamido-2-deoxy-beta-D-glucopyranose

Chain J:  33% 67%

UAG1  
UAG2  
BMA3

## 4 Data and refinement statistics

Property	Value	Source
Space group	P 21 3	Depositor
Cell constants a, b, c, $\alpha$ , $\beta$ , $\gamma$	164.34Å 164.34Å 164.34Å 90.00° 90.00° 90.00°	Depositor
Resolution (Å)	49.55 – 2.40 49.55 – 2.40	Depositor EDS
% Data completeness (in resolution range)	99.5 (49.55-2.40) 99.5 (49.55-2.40)	Depositor EDS
$R_{merge}$	0.12	Depositor
$R_{sym}$	0.12	Depositor
$\langle I/\sigma(I) \rangle$ <sup>1</sup>	2.43 (at 2.39Å)	Xtriage
Refinement program	PHENIX 1.9_1692	Depositor
R, $R_{free}$	0.205 , 0.253 0.208 , 0.254	Depositor DCC
$R_{free}$ test set	2913 reflections (5.08%)	wwPDB-VP
Wilson B-factor (Å <sup>2</sup> )	36.1	Xtriage
Anisotropy	0.000	Xtriage
Bulk solvent $k_{sol}$ (e/Å <sup>3</sup> ), $B_{sol}$ (Å <sup>2</sup> )	0.30 , 39.7	EDS
L-test for twinning <sup>2</sup>	$\langle  L  \rangle = 0.50$ , $\langle L^2 \rangle = 0.34$	Xtriage
Estimated twinning fraction	0.023 for l,-k,h	Xtriage
$F_o, F_c$ correlation	0.93	EDS
Total number of atoms	9639	wwPDB-VP
Average B, all atoms (Å <sup>2</sup> )	43.0	wwPDB-VP

Xtriage's analysis on translational NCS is as follows: *The largest off-origin peak in the Patterson function is 4.04% of the height of the origin peak. No significant pseudotranslation is detected.*

<sup>1</sup>Intensities estimated from amplitudes.

<sup>2</sup>Theoretical values of  $\langle |L| \rangle$ ,  $\langle L^2 \rangle$  for acentric reflections are 0.5, 0.333 respectively for untwinned datasets, and 0.375, 0.2 for perfectly twinned datasets.

## 5 Model quality [i](#)

### 5.1 Standard geometry [i](#)

Bond lengths and bond angles in the following residue types are not validated in this section: BMA, NAG, MAN

The Z score for a bond length (or angle) is the number of standard deviations the observed value is removed from the expected value. A bond length (or angle) with  $|Z| > 5$  is considered an outlier worth inspection. RMSZ is the root-mean-square of all Z scores of the bond lengths (or angles).

Mol	Chain	Bond lengths		Bond angles	
		RMSZ	$\# Z  > 5$	RMSZ	$\# Z  > 5$
1	A	0.35	0/3315	0.52	0/4494
1	C	0.34	0/3315	0.53	0/4494
2	B	0.41	0/1127	0.63	1/1515 (0.1%)
2	D	0.35	0/1127	0.57	0/1515
All	All	0.36	0/8884	0.55	1/12018 (0.0%)

There are no bond length outliers.

All (1) bond angle outliers are listed below:

Mol	Chain	Res	Type	Atoms	Z	Observed(°)	Ideal(°)
2	B	147	ASP	N-CA-C	6.39	128.25	111.00

There are no chirality outliers.

There are no planarity outliers.

### 5.2 Too-close contacts [i](#)

In the following table, the Non-H and H(model) columns list the number of non-hydrogen atoms and hydrogen atoms in the chain respectively. The H(added) column lists the number of hydrogen atoms added and optimized by MolProbity. The Clashes column lists the number of clashes within the asymmetric unit, whereas Symm-Clashes lists symmetry related clashes.

Mol	Chain	Non-H	H(model)	H(added)	Clashes	Symm-Clashes
1	A	3240	0	3114	43	0
1	C	3240	0	3114	48	0
2	B	1110	0	1067	39	0
2	D	1110	0	1067	40	0
3	E	72	0	61	3	0
3	F	72	0	61	1	0

*Continued on next page...*

*Continued from previous page...*

Mol	Chain	Non-H	H(model)	H(added)	Clashes	Symm-Clashes
3	I	72	0	61	1	0
4	G	28	0	25	3	0
4	H	28	0	25	0	0
4	K	28	0	25	1	0
4	L	28	0	25	0	0
5	J	39	0	34	2	0
6	B	14	0	13	0	0
6	D	14	0	13	0	0
7	A	265	0	0	10	0
7	B	52	0	0	5	0
7	C	209	0	0	11	0
7	D	18	0	0	1	0
All	All	9639	0	8705	159	0

The all-atom clashscore is defined as the number of clashes found per 1000 atoms (including hydrogen atoms). The all-atom clashscore for this structure is 9.

All (159) close contacts within the same asymmetric unit are listed below, sorted by their clash magnitude.

Atom-1	Atom-2	Interatomic distance (Å)	Clash overlap (Å)
2:D:147:ASP:O	2:D:151:LYS:HG2	1.33	1.24
2:B:147:ASP:OD2	2:B:148:ALA:N	1.84	1.09
2:D:147:ASP:O	2:D:151:LYS:CG	2.13	0.96
1:C:420:LEU:O	7:C:801:HOH:O	1.83	0.96
2:D:29:ARG:NH1	7:D:801:HOH:O	2.03	0.90
1:C:404:CYS:O	7:C:802:HOH:O	1.93	0.87
2:B:147:ASP:CG	2:B:148:ALA:H	1.77	0.86
2:B:37:ALA:O	2:B:38:SER:OG	1.93	0.86
2:B:30:SER:OG	2:B:31:ASN:N	2.13	0.81
2:B:42:THR:HG23	7:B:811:HOH:O	1.78	0.81
1:C:252:GLY:O	7:C:803:HOH:O	1.98	0.81
1:C:415:THR:O	2:D:101:ARG:NH1	2.14	0.81
2:D:44:ALA:HB3	2:D:46:PHE:CD2	2.16	0.80
2:D:43:GLN:HG2	2:D:44:ALA:H	1.47	0.80
1:A:141:ARG:NH1	7:A:804:HOH:O	2.17	0.78
1:C:294:THR:OG1	7:C:804:HOH:O	2.00	0.78
1:C:128:GLY:O	7:C:805:HOH:O	2.04	0.76
2:D:141:VAL:HG21	2:D:151:LYS:HZ2	1.50	0.74
2:B:73:HIS:HD2	2:B:74:ASP:N	1.89	0.70
1:A:16:SER:OG	7:A:802:HOH:O	2.09	0.70
2:D:42:THR:O	2:D:43:GLN:HB3	1.91	0.70

*Continued on next page...*

*Continued from previous page...*

Atom-1	Atom-2	Interatomic distance (Å)	Clash overlap (Å)
2:B:43:GLN:NE2	7:B:801:HOH:O	1.80	0.69
1:A:141:ARG:NH1	7:A:806:HOH:O	2.25	0.69
1:A:141:ARG:NE	7:A:807:HOH:O	2.26	0.68
2:B:101:ARG:NH1	7:B:804:HOH:O	2.27	0.68
2:D:146:CYS:HB3	2:D:151:LYS:NZ	2.09	0.68
1:C:149:SER:HB3	1:C:308:ASP:O	1.97	0.65
1:A:147:ARG:HD3	7:A:1005:HOH:O	1.97	0.62
2:B:73:HIS:CD2	2:B:74:ASP:N	2.67	0.62
2:D:44:ALA:CB	2:D:46:PHE:CE2	2.82	0.62
2:D:144:GLU:HB3	2:D:145:ASN:OD1	2.01	0.61
3:F:2:NAG:O3	3:F:3:BMA:H2	2.01	0.61
1:C:12:ASN:H	1:C:15:PHE:HD1	1.50	0.60
1:C:371:LEU:N	1:C:372:GLY:HA3	2.17	0.60
2:D:145:ASN:N	2:D:145:ASN:OD1	2.34	0.60
2:B:42:THR:O	2:B:42:THR:HG23	2.02	0.59
2:D:43:GLN:HG2	2:D:44:ALA:N	2.16	0.58
1:C:188:GLU:O	1:C:296:ARG:NH1	2.36	0.58
1:C:33:MET:HE2	1:C:414:PRO:HB2	1.84	0.58
2:D:147:ASP:O	2:D:151:LYS:CD	2.52	0.58
2:D:141:VAL:HG11	2:D:151:LYS:HE3	1.85	0.58
1:A:371:LEU:N	1:A:372:GLY:HA3	2.19	0.57
2:B:147:ASP:CG	2:B:148:ALA:N	2.45	0.57
2:D:141:VAL:HG21	2:D:151:LYS:NZ	2.20	0.57
1:A:25:VAL:HG13	1:A:421:ILE:HG23	1.87	0.57
7:A:805:HOH:O	4:G:2:NAG:O7	2.17	0.57
2:B:44:ALA:HB3	2:B:46:PHE:CD2	2.40	0.56
2:D:44:ALA:HB3	2:D:46:PHE:CE2	2.41	0.56
2:D:142:ASP:O	2:D:144:GLU:N	2.39	0.56
2:B:25:TYR:O	2:B:43:GLN:HG2	2.05	0.56
2:D:147:ASP:O	2:D:151:LYS:HD3	2.06	0.56
2:D:146:CYS:HB3	2:D:151:LYS:HZ3	1.71	0.56
1:C:234:LYS:HD3	1:C:244:ASP:OD1	2.06	0.55
3:I:2:NAG:O3	3:I:3:BMA:C1	2.55	0.55
2:D:31:ASN:CG	2:D:32:GLY:H	2.11	0.53
3:E:1:NAG:H61	3:E:2:NAG:C7	2.38	0.53
1:A:33:MET:HE2	1:A:414:PRO:HB2	1.90	0.53
1:C:242:CYS:O	7:C:807:HOH:O	2.19	0.53
1:C:71:ASP:HA	1:C:365:ARG:HG2	1.91	0.53
2:B:38:SER:C	2:B:39:VAL:HG12	2.29	0.52
1:C:38:ASN:ND2	7:C:816:HOH:O	2.33	0.52
2:D:104:ILE:O	2:D:108:ILE:HG12	2.08	0.52

*Continued on next page...*

*Continued from previous page...*

Atom-1	Atom-2	Interatomic distance (Å)	Clash overlap (Å)
1:C:398:PRO:HB2	2:D:78:ILE:O	2.10	0.52
1:C:33:MET:HE1	2:D:101:ARG:HB2	1.91	0.52
1:C:15:PHE:HZ	1:C:420:LEU:HD23	1.74	0.52
1:C:25:VAL:HG13	1:C:421:ILE:HG23	1.90	0.52
1:A:203:GLU:OE2	1:A:292:LYS:HD2	2.09	0.52
1:C:423:PRO:HD3	2:D:112:LEU:HD23	1.92	0.52
1:A:141:ARG:CD	7:A:807:HOH:O	2.58	0.52
2:D:43:GLN:CG	2:D:44:ALA:N	2.72	0.51
1:A:395:TYR:CD2	2:B:86:GLU:HG2	2.45	0.51
1:C:38:ASN:ND2	7:C:818:HOH:O	2.38	0.51
7:C:809:HOH:O	5:J:3:BMA:O3	2.20	0.51
2:B:147:ASP:H	2:B:150:CYS:HB3	1.76	0.50
2:B:9:PHE:N	7:B:809:HOH:O	2.45	0.50
1:A:65:GLN:HB2	1:A:69:SER:HB3	1.94	0.50
1:A:234:LYS:HG3	1:A:244:ASP:OD2	2.11	0.49
1:C:4:LEU:H	2:D:30:SER:HB3	1.77	0.49
2:B:157:PHE:O	7:B:802:HOH:O	2.20	0.49
1:A:361:ASP:O	1:A:365:ARG:HG3	2.12	0.49
2:B:126:ARG:NH2	2:B:153:TYR:O	2.45	0.49
2:B:42:THR:O	2:B:43:GLN:HB2	2.12	0.49
2:B:128:GLY:HA2	2:B:129:GLY:HA2	1.53	0.49
2:D:30:SER:OG	2:D:31:ASN:N	2.46	0.49
1:C:245:TYR:O	1:C:262:ASN:HB2	2.13	0.49
1:C:370:GLY:C	1:C:372:GLY:HA3	2.33	0.49
1:A:4:LEU:HG	2:B:140:TYR:CE1	2.48	0.48
1:A:210:LEU:HB3	1:A:222:HIS:CD2	2.47	0.48
2:D:128:GLY:HA2	2:D:129:GLY:HA2	1.50	0.47
1:C:125:ASP:HB3	1:C:174:SER:O	2.14	0.47
1:A:4:LEU:H	2:B:30:SER:HB2	1.80	0.47
1:C:116:VAL:HG22	1:C:322:TRP:CE2	2.49	0.47
1:A:61:LEU:HA	1:A:66:PHE:CD1	2.50	0.47
1:A:28:MET:SD	4:G:1:NAG:H5	2.54	0.47
1:C:238:ASN:HA	1:C:241:GLY:O	2.15	0.47
2:D:130:ILE:HG22	2:D:141:VAL:HG23	1.95	0.47
1:A:12:ASN:H	1:A:15:PHE:HD1	1.63	0.46
1:A:33:MET:HE1	2:B:101:ARG:HB2	1.97	0.46
1:A:67:PRO:HD2	7:A:1000:HOH:O	2.15	0.46
1:C:95:PRO:HA	1:C:180:MET:HE2	1.98	0.46
1:C:8:VAL:HG13	2:D:26:PHE:HB2	1.98	0.46
1:A:33:MET:HG3	1:A:416:LEU:HG	1.96	0.46
2:B:29:ARG:HG3	2:B:30:SER:H	1.80	0.46

*Continued on next page...*

*Continued from previous page...*

Atom-1	Atom-2	Interatomic distance (Å)	Clash overlap (Å)
1:A:78:LYS:O	1:A:81:ARG:NH2	2.49	0.46
1:C:423:PRO:HD3	2:D:112:LEU:CD2	2.47	0.45
1:C:126:CYS:SG	1:C:180:MET:HE3	2.57	0.45
1:C:32:PRO:HA	1:C:415:THR:HA	1.99	0.45
1:C:224:VAL:HG21	1:C:284:LEU:HD22	1.98	0.45
2:B:73:HIS:CD2	2:B:74:ASP:H	2.33	0.45
1:C:61:LEU:HA	1:C:66:PHE:CD1	2.52	0.44
2:B:31:ASN:OD1	2:B:32:GLY:N	2.46	0.44
1:C:28:MET:SD	4:K:1:NAG:H5	2.58	0.44
1:C:151:CYS:HB2	7:C:918:HOH:O	2.17	0.43
3:E:2:NAG:O3	3:E:3:BMA:C1	2.65	0.43
1:A:238:ASN:HA	1:A:241:GLY:O	2.18	0.43
1:A:28:MET:HE1	4:G:2:NAG:H82	2.00	0.43
1:A:3:GLU:OE1	2:B:29:ARG:HD2	2.19	0.43
1:C:31:GLU:O	1:C:416:LEU:N	2.49	0.43
2:D:127:GLY:O	2:D:130:ILE:N	2.51	0.43
1:C:413:ILE:HA	1:C:414:PRO:HD3	1.88	0.43
2:D:38:SER:C	2:D:39:VAL:HG12	2.38	0.43
3:E:1:NAG:H61	3:E:2:NAG:N2	2.34	0.43
1:A:7:ILE:O	2:B:10:GLY:HA2	2.19	0.43
1:C:206:ALA:HB2	1:C:298:LEU:HD21	2.00	0.43
1:C:114:GLU:OE2	1:C:139:TYR:HE1	2.01	0.42
1:C:52:ILE:CD1	1:C:105:GLY:HA3	2.49	0.42
1:A:33:MET:CE	2:B:101:ARG:HB2	2.49	0.42
2:B:157:PHE:HD1	2:B:157:PHE:HA	1.75	0.42
1:A:370:GLY:C	1:A:372:GLY:HA3	2.39	0.42
2:B:38:SER:O	2:B:39:VAL:HB	2.20	0.42
1:A:4:LEU:H	2:B:30:SER:CB	2.33	0.42
2:D:144:GLU:HB3	2:D:145:ASN:H	1.61	0.42
1:A:4:LEU:N	2:B:30:SER:HB2	2.34	0.42
1:C:55:GLY:HA2	1:C:114:GLU:HB3	2.02	0.42
1:A:143:TYR:HB3	1:A:315:ILE:HD11	2.02	0.42
1:A:237:PHE:CD1	1:A:245:TYR:HB2	2.55	0.42
1:A:98:LYS:HE2	7:A:907:HOH:O	2.19	0.42
2:B:38:SER:O	2:B:39:VAL:CB	2.68	0.41
1:A:237:PHE:HZ	1:A:294:THR:HG21	1.84	0.41
2:D:67:PHE:CD1	2:D:97:LEU:HD13	2.55	0.41
2:B:31:ASN:ND2	2:B:36:GLY:H	2.18	0.41
2:D:34:GLY:HA2	2:D:35:GLY:HA2	1.72	0.41
2:B:29:ARG:CG	2:B:30:SER:H	2.33	0.41
1:C:33:MET:CE	2:D:101:ARG:HB2	2.50	0.41

*Continued on next page...*

Continued from previous page...

Atom-1	Atom-2	Interatomic distance (Å)	Clash overlap (Å)
2:D:10:GLY:O	2:D:12:LEU:N	2.44	0.41
1:A:38:ASN:ND2	7:A:803:HOH:O	2.16	0.41
1:C:31:GLU:N	1:C:416:LEU:O	2.50	0.41
1:C:114:GLU:OE1	1:C:114:GLU:N	2.54	0.41
1:A:98:LYS:HD2	1:A:98:LYS:HA	1.80	0.41
1:C:91:SER:HB3	1:C:154:LEU:HD22	2.02	0.41
1:A:237:PHE:CZ	1:A:294:THR:HG21	2.55	0.41
1:A:45:VAL:O	1:A:376:THR:HB	2.20	0.41
1:C:369:SER:HA	7:C:867:HOH:O	2.21	0.41
5:J:2:NAG:H62	5:J:3:BMA:H2	2.02	0.41
1:A:276:LYS:HD3	1:A:276:LYS:HA	1.89	0.40
1:C:204:GLN:NE2	1:C:295:PRO:O	2.54	0.40
2:D:132:GLN:HG2	2:D:140:TYR:HB2	2.02	0.40
1:A:398:PRO:HB2	2:B:78:ILE:O	2.21	0.40
1:A:403:ARG:HB3	2:B:71:ILE:HB	2.04	0.40

There are no symmetry-related clashes.

## 5.3 Torsion angles [i](#)

### 5.3.1 Protein backbone [i](#)

In the following table, the Percentiles column shows the percent Ramachandran outliers of the chain as a percentile score with respect to all X-ray entries followed by that with respect to entries of similar resolution.

The Analysed column shows the number of residues for which the backbone conformation was analysed, and the total number of residues.

Mol	Chain	Analysed	Favoured	Allowed	Outliers	Percentiles	
1	A	420/427 (98%)	401 (96%)	17 (4%)	2 (0%)	29	41
1	C	420/427 (98%)	396 (94%)	20 (5%)	4 (1%)	15	23
2	B	147/157 (94%)	120 (82%)	18 (12%)	9 (6%)	1	0
2	D	147/157 (94%)	120 (82%)	17 (12%)	10 (7%)	1	0
All	All	1134/1168 (97%)	1037 (91%)	72 (6%)	25 (2%)	6	7

All (25) Ramachandran outliers are listed below:



Mol	Chain	Res	Type
2	B	39	VAL
1	C	355	ALA
1	C	356	ALA
2	D	43	GLN
2	D	143	SER
2	B	19	GLY
2	B	43	GLN
1	C	264	VAL
1	C	270	ILE
2	D	21	VAL
2	D	38	SER
2	B	21	VAL
2	B	30	SER
2	B	38	SER
2	D	11	LEU
2	D	19	GLY
2	B	144	GLU
2	D	20	GLY
2	D	34	GLY
1	A	419	GLY
2	B	132	GLN
2	D	132	GLN
1	A	420	LEU
2	B	11	LEU
2	D	39	VAL

### 5.3.2 Protein sidechains ⓘ

In the following table, the Percentiles column shows the percent sidechain outliers of the chain as a percentile score with respect to all X-ray entries followed by that with respect to entries of similar resolution.

The Analysed column shows the number of residues for which the sidechain conformation was analysed, and the total number of residues.

Mol	Chain	Analysed	Rotameric	Outliers	Percentiles	
1	A	357/358 (100%)	347 (97%)	10 (3%)	43	63
1	C	357/358 (100%)	351 (98%)	6 (2%)	60	78
2	B	109/116 (94%)	101 (93%)	8 (7%)	14	22
2	D	109/116 (94%)	100 (92%)	9 (8%)	11	17
All	All	932/948 (98%)	899 (96%)	33 (4%)	36	55

All (33) residues with a non-rotameric sidechain are listed below:

Mol	Chain	Res	Type
1	A	4	LEU
1	A	8	VAL
1	A	114	GLU
1	A	147	ARG
1	A	158	LEU
1	A	171	THR
1	A	294	THR
1	A	306	CYS
1	A	392	VAL
1	A	412	ARG
2	B	11	LEU
2	B	43	GLN
2	B	78	ILE
2	B	99	ILE
2	B	145	ASN
2	B	146	CYS
2	B	156	ASN
2	B	157	PHE
1	C	74	LEU
1	C	180	MET
1	C	189	SER
1	C	234	LYS
1	C	306	CYS
1	C	392	VAL
2	D	11	LEU
2	D	39	VAL
2	D	43	GLN
2	D	78	ILE
2	D	144	GLU
2	D	146	CYS
2	D	147	ASP
2	D	152	GLU
2	D	155	PHE

Some sidechains can be flipped to improve hydrogen bonding and reduce clashes. All (1) such sidechains are listed below:

Mol	Chain	Res	Type
2	B	73	HIS

### 5.3.3 RNA ⓘ

There are no RNA molecules in this entry.

## 5.4 Non-standard residues in protein, DNA, RNA chains ⓘ

There are no non-standard protein/DNA/RNA residues in this entry.

## 5.5 Carbohydrates ⓘ

29 monosaccharides are modelled in this entry.

In the following table, the Counts columns list the number of bonds (or angles) for which Mogul statistics could be retrieved, the number of bonds (or angles) that are observed in the model and the number of bonds (or angles) that are defined in the Chemical Component Dictionary. The Link column lists molecule types, if any, to which the group is linked. The Z score for a bond length (or angle) is the number of standard deviations the observed value is removed from the expected value. A bond length (or angle) with  $|Z| > 2$  is considered an outlier worth inspection. RMSZ is the root-mean-square of all Z scores of the bond lengths (or angles).

Mol	Type	Chain	Res	Link	Bond lengths			Bond angles		
					Counts	RMSZ	# $ Z  > 2$	Counts	RMSZ	# $ Z  > 2$
3	NAG	E	1	1,3	14,14,15	0.32	0	17,19,21	0.95	1 (5%)
3	NAG	E	2	3	14,14,15	1.57	4 (28%)	17,19,21	1.62	5 (29%)
3	BMA	E	3	3	11,11,12	0.88	0	15,15,17	4.11	6 (40%)
3	MAN	E	4	3	11,11,12	0.25	0	15,15,17	0.88	1 (6%)
3	MAN	E	5	3	11,11,12	0.32	0	15,15,17	1.36	3 (20%)
3	MAN	E	6	3	11,11,12	0.45	0	15,15,17	0.82	0
3	NAG	F	1	1,3	14,14,15	0.31	0	17,19,21	0.84	1 (5%)
3	NAG	F	2	3	14,14,15	0.48	0	17,19,21	1.50	5 (29%)
3	BMA	F	3	3	11,11,12	0.46	0	15,15,17	2.48	5 (33%)
3	MAN	F	4	3	11,11,12	0.42	0	15,15,17	2.03	5 (33%)
3	MAN	F	5	3	11,11,12	0.37	0	15,15,17	0.86	1 (6%)
3	MAN	F	6	3	11,11,12	0.47	0	15,15,17	1.30	2 (13%)
4	NAG	G	1	1,4	14,14,15	0.31	0	17,19,21	1.38	1 (5%)
4	NAG	G	2	4	14,14,15	0.39	0	17,19,21	1.69	2 (11%)
4	NAG	H	1	2,4	14,14,15	0.42	0	17,19,21	0.76	1 (5%)
4	NAG	H	2	4	14,14,15	0.30	0	17,19,21	1.24	2 (11%)
3	NAG	I	1	1,3	14,14,15	0.30	0	17,19,21	0.82	1 (5%)
3	NAG	I	2	3	14,14,15	1.35	2 (14%)	17,19,21	1.33	2 (11%)

Mol	Type	Chain	Res	Link	Bond lengths			Bond angles		
					Counts	RMSZ	# Z  > 2	Counts	RMSZ	# Z  > 2
3	BMA	I	3	3	11,11,12	0.79	1 (9%)	15,15,17	2.28	3 (20%)
3	MAN	I	4	3	11,11,12	0.27	0	15,15,17	1.27	2 (13%)
3	MAN	I	5	3	11,11,12	0.40	0	15,15,17	0.76	0
3	MAN	I	6	3	11,11,12	0.43	0	15,15,17	1.05	0
5	NAG	J	1	1,5	14,14,15	0.40	0	17,19,21	1.00	2 (11%)
5	NAG	J	2	5	14,14,15	0.57	0	17,19,21	1.25	2 (11%)
5	BMA	J	3	5	11,11,12	0.40	0	15,15,17	1.37	2 (13%)
4	NAG	K	1	1,4	14,14,15	0.34	0	17,19,21	1.97	2 (11%)
4	NAG	K	2	4	14,14,15	0.29	0	17,19,21	1.16	1 (5%)
4	NAG	L	1	2,4	14,14,15	0.32	0	17,19,21	0.79	1 (5%)
4	NAG	L	2	4	14,14,15	0.34	0	17,19,21	1.05	1 (5%)

In the following table, the Chirals column lists the number of chiral outliers, the number of chiral centers analysed, the number of these observed in the model and the number defined in the Chemical Component Dictionary. Similar counts are reported in the Torsion and Rings columns. '-' means no outliers of that kind were identified.

Mol	Type	Chain	Res	Link	Chirals	Torsions	Rings
3	NAG	E	1	1,3	-	0/6/23/26	0/1/1/1
3	NAG	E	2	3	-	0/6/23/26	0/1/1/1
3	BMA	E	3	3	-	0/2/19/22	0/1/1/1
3	MAN	E	4	3	-	0/2/19/22	0/1/1/1
3	MAN	E	5	3	-	0/2/19/22	0/1/1/1
3	MAN	E	6	3	-	0/2/19/22	0/1/1/1
3	NAG	F	1	1,3	-	0/6/23/26	0/1/1/1
3	NAG	F	2	3	-	0/6/23/26	0/1/1/1
3	BMA	F	3	3	-	0/2/19/22	0/1/1/1
3	MAN	F	4	3	-	0/2/19/22	0/1/1/1
3	MAN	F	5	3	-	0/2/19/22	0/1/1/1
3	MAN	F	6	3	-	0/2/19/22	0/1/1/1
4	NAG	G	1	1,4	-	4/6/23/26	0/1/1/1
4	NAG	G	2	4	-	5/6/23/26	0/1/1/1
4	NAG	H	1	2,4	-	0/6/23/26	0/1/1/1
4	NAG	H	2	4	-	0/6/23/26	0/1/1/1
3	NAG	I	1	1,3	-	0/6/23/26	0/1/1/1
3	NAG	I	2	3	-	0/6/23/26	0/1/1/1
3	BMA	I	3	3	-	0/2/19/22	0/1/1/1
3	MAN	I	4	3	-	0/2/19/22	0/1/1/1
3	MAN	I	5	3	-	2/2/19/22	0/1/1/1
3	MAN	I	6	3	-	0/2/19/22	0/1/1/1

*Continued on next page...*

*Continued from previous page...*

Mol	Type	Chain	Res	Link	Chirals	Torsions	Rings
5	NAG	J	1	1,5	-	0/6/23/26	0/1/1/1
5	NAG	J	2	5	-	2/6/23/26	0/1/1/1
5	BMA	J	3	5	-	2/2/19/22	0/1/1/1
4	NAG	K	1	1,4	-	0/6/23/26	0/1/1/1
4	NAG	K	2	4	-	3/6/23/26	0/1/1/1
4	NAG	L	1	2,4	-	0/6/23/26	0/1/1/1
4	NAG	L	2	4	-	0/6/23/26	0/1/1/1

All (7) bond length outliers are listed below:

Mol	Chain	Res	Type	Atoms	Z	Observed(Å)	Ideal(Å)
3	E	2	NAG	O4-C4	-2.51	1.37	1.43
3	E	2	NAG	O5-C1	-2.41	1.39	1.43
3	I	2	NAG	C2-N2	-2.26	1.42	1.46
3	E	2	NAG	C8-C7	-2.25	1.45	1.50
3	E	2	NAG	O7-C7	-2.19	1.18	1.23
3	I	2	NAG	O7-C7	-2.08	1.18	1.23
3	I	3	BMA	O5-C1	-2.07	1.40	1.43

All (60) bond angle outliers are listed below:

Mol	Chain	Res	Type	Atoms	Z	Observed(°)	Ideal(°)
3	E	3	BMA	O5-C1-C2	-14.11	89.00	110.77
3	I	3	BMA	C1-O5-C5	-7.44	102.11	112.19
4	K	1	NAG	C1-O5-C5	7.01	121.69	112.19
4	G	2	NAG	C1-O5-C5	5.99	120.31	112.19
3	F	3	BMA	C1-C2-C3	5.41	116.31	109.67
3	F	3	BMA	C2-C3-C4	-5.32	101.69	110.89
3	F	4	MAN	C1-O5-C5	5.19	119.22	112.19
4	G	1	NAG	C1-O5-C5	4.80	118.70	112.19
5	J	3	BMA	O5-C5-C6	3.79	113.15	107.20
3	F	4	MAN	C1-C2-C3	3.66	114.17	109.67
4	K	2	NAG	C1-O5-C5	3.58	117.04	112.19
3	I	2	NAG	O4-C4-C3	-3.48	102.31	110.35
3	E	3	BMA	O5-C5-C4	-3.47	102.38	110.83
3	F	3	BMA	O3-C3-C2	-3.43	103.43	109.99
4	H	2	NAG	C1-O5-C5	3.36	116.74	112.19
3	E	3	BMA	C3-C4-C5	-3.32	104.32	110.24
5	J	2	NAG	O4-C4-C5	3.21	117.27	109.30
3	F	2	NAG	O3-C3-C2	-3.12	103.02	109.47
3	E	3	BMA	C1-C2-C3	3.02	113.38	109.67

*Continued on next page...*

*Continued from previous page...*

Mol	Chain	Res	Type	Atoms	Z	Observed(°)	Ideal(°)
4	L	2	NAG	C1-O5-C5	3.01	116.27	112.19
3	E	5	MAN	O5-C5-C6	2.99	111.89	107.20
4	H	2	NAG	C2-N2-C7	-2.96	118.69	122.90
3	F	6	MAN	C1-O5-C5	-2.90	108.26	112.19
3	E	2	NAG	O7-C7-N2	2.90	127.28	121.95
3	E	1	NAG	C1-O5-C5	2.89	116.10	112.19
3	E	3	BMA	O2-C2-C1	2.83	114.94	109.15
3	F	6	MAN	O5-C5-C6	2.74	111.50	107.20
3	I	4	MAN	C1-O5-C5	2.71	115.87	112.19
5	J	2	NAG	O4-C4-C3	2.70	116.60	110.35
3	E	2	NAG	O4-C4-C3	-2.63	104.26	110.35
3	F	1	NAG	O5-C5-C6	2.58	111.25	107.20
3	I	3	BMA	O2-C2-C3	-2.53	105.07	110.14
3	E	2	NAG	O5-C1-C2	-2.50	107.33	111.29
3	E	5	MAN	C1-C2-C3	-2.49	106.60	109.67
3	I	4	MAN	C6-C5-C4	-2.48	107.18	113.00
3	F	4	MAN	C6-C5-C4	-2.44	107.28	113.00
3	F	2	NAG	O4-C4-C5	-2.41	103.32	109.30
3	E	4	MAN	O5-C5-C6	2.40	110.97	107.20
3	I	1	NAG	C1-O5-C5	2.37	115.41	112.19
3	F	3	BMA	C6-C5-C4	-2.36	107.47	113.00
3	E	5	MAN	C6-C5-C4	-2.35	107.50	113.00
5	J	1	NAG	C1-O5-C5	2.35	115.38	112.19
3	I	2	NAG	O5-C1-C2	-2.33	107.61	111.29
3	E	2	NAG	C2-N2-C7	2.33	126.22	122.90
3	F	2	NAG	O5-C1-C2	-2.32	107.63	111.29
5	J	1	NAG	C2-N2-C7	-2.31	119.61	122.90
3	E	3	BMA	C1-O5-C5	2.22	115.20	112.19
4	L	1	NAG	C1-O5-C5	2.20	115.18	112.19
3	F	5	MAN	O5-C5-C6	2.20	110.65	107.20
4	H	1	NAG	C1-O5-C5	2.19	115.17	112.19
4	G	2	NAG	O5-C1-C2	2.19	114.75	111.29
3	I	3	BMA	O5-C5-C4	-2.18	105.53	110.83
5	J	3	BMA	C1-O5-C5	-2.17	109.26	112.19
3	F	4	MAN	O3-C3-C4	-2.09	105.51	110.35
3	E	2	NAG	O7-C7-C8	-2.09	118.18	122.06
4	K	1	NAG	C6-C5-C4	-2.07	108.14	113.00
3	F	4	MAN	O5-C5-C6	2.07	110.45	107.20
3	F	2	NAG	O4-C4-C3	2.04	115.07	110.35
3	F	2	NAG	C4-C3-C2	2.02	113.98	111.02
3	F	3	BMA	O2-C2-C3	-2.01	106.11	110.14

There are no chirality outliers.

All (18) torsion outliers are listed below:

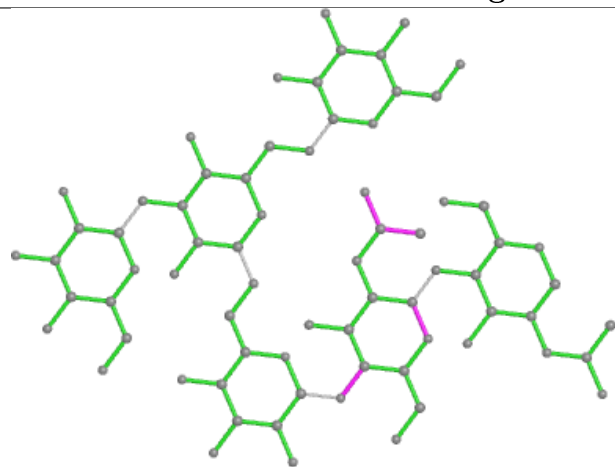
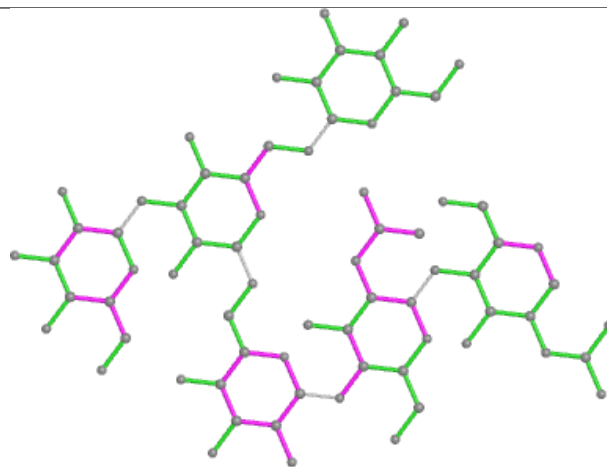
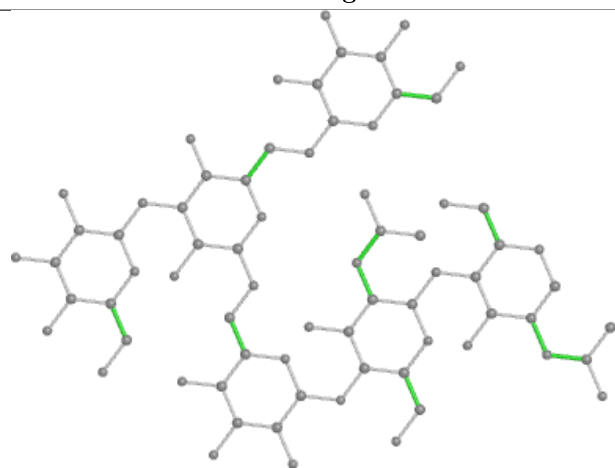
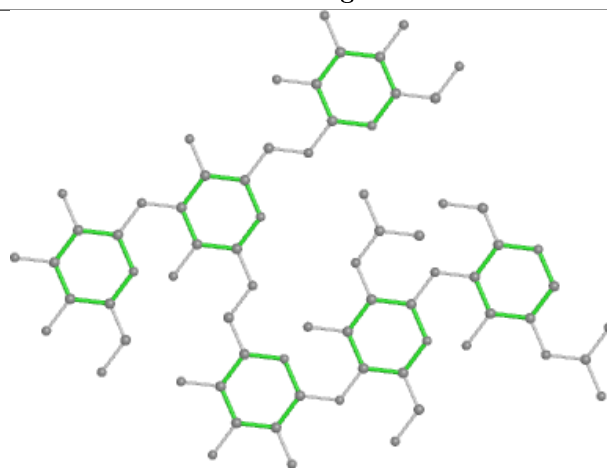
Mol	Chain	Res	Type	Atoms
4	G	2	NAG	C8-C7-N2-C2
4	G	2	NAG	O7-C7-N2-C2
4	G	1	NAG	C8-C7-N2-C2
4	G	1	NAG	O7-C7-N2-C2
4	G	1	NAG	O5-C5-C6-O6
4	G	2	NAG	O5-C5-C6-O6
4	G	1	NAG	C4-C5-C6-O6
5	J	3	BMA	C4-C5-C6-O6
4	G	2	NAG	C4-C5-C6-O6
3	I	5	MAN	O5-C5-C6-O6
3	I	5	MAN	C4-C5-C6-O6
5	J	3	BMA	O5-C5-C6-O6
4	K	2	NAG	O5-C5-C6-O6
4	K	2	NAG	C8-C7-N2-C2
4	K	2	NAG	O7-C7-N2-C2
5	J	2	NAG	C8-C7-N2-C2
5	J	2	NAG	O7-C7-N2-C2
4	G	2	NAG	C1-C2-N2-C7

There are no ring outliers.

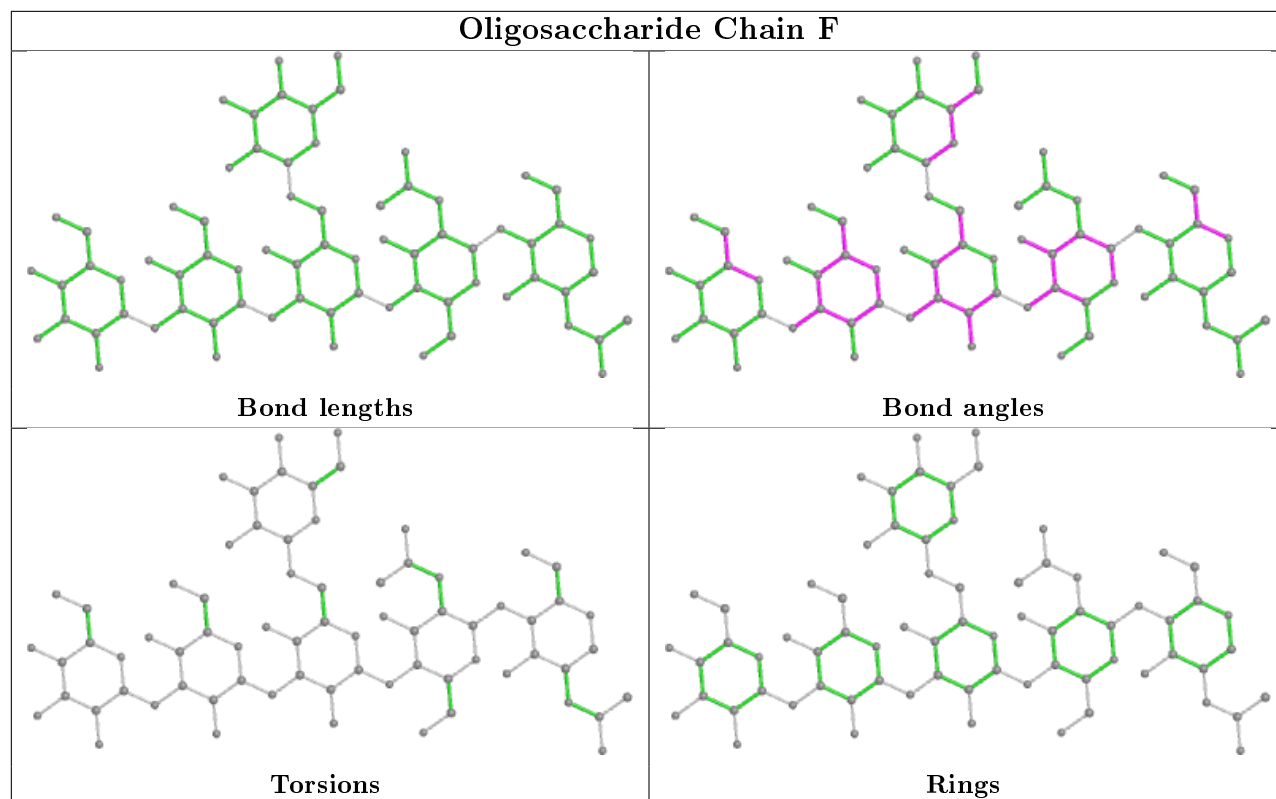
12 monomers are involved in 11 short contacts:

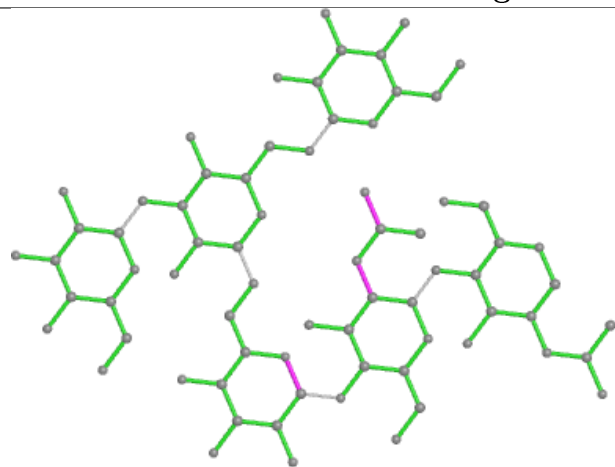
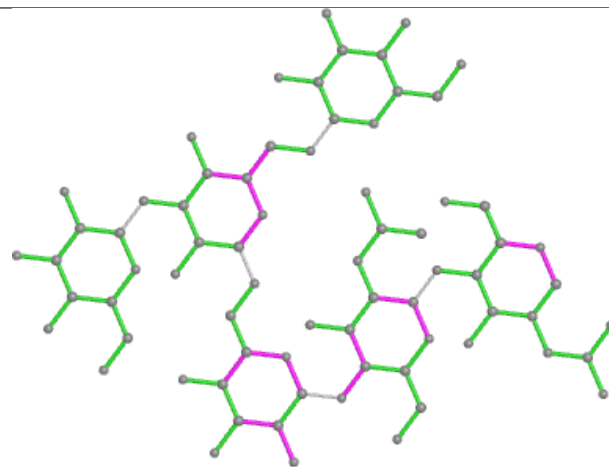
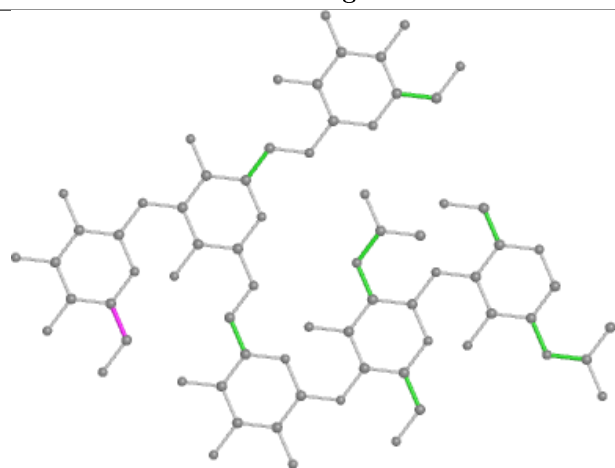
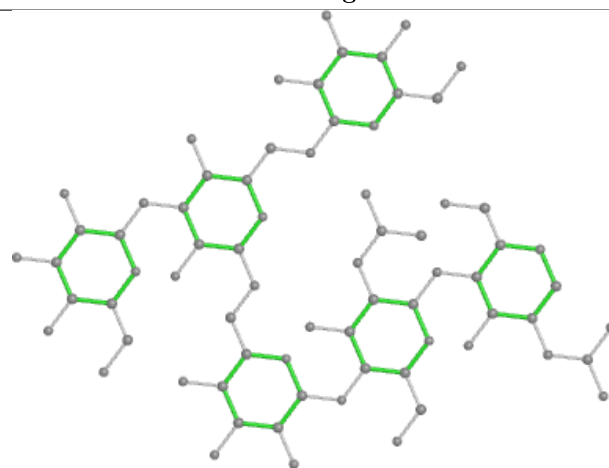
Mol	Chain	Res	Type	Clashes	Symm-Clashes
3	I	2	NAG	1	0
4	G	1	NAG	1	0
3	F	2	NAG	1	0
5	J	2	NAG	1	0
3	E	2	NAG	3	0
3	I	3	BMA	1	0
4	G	2	NAG	2	0
3	E	1	NAG	2	0
3	E	3	BMA	1	0
4	K	1	NAG	1	0
3	F	3	BMA	1	0
5	J	3	BMA	2	0

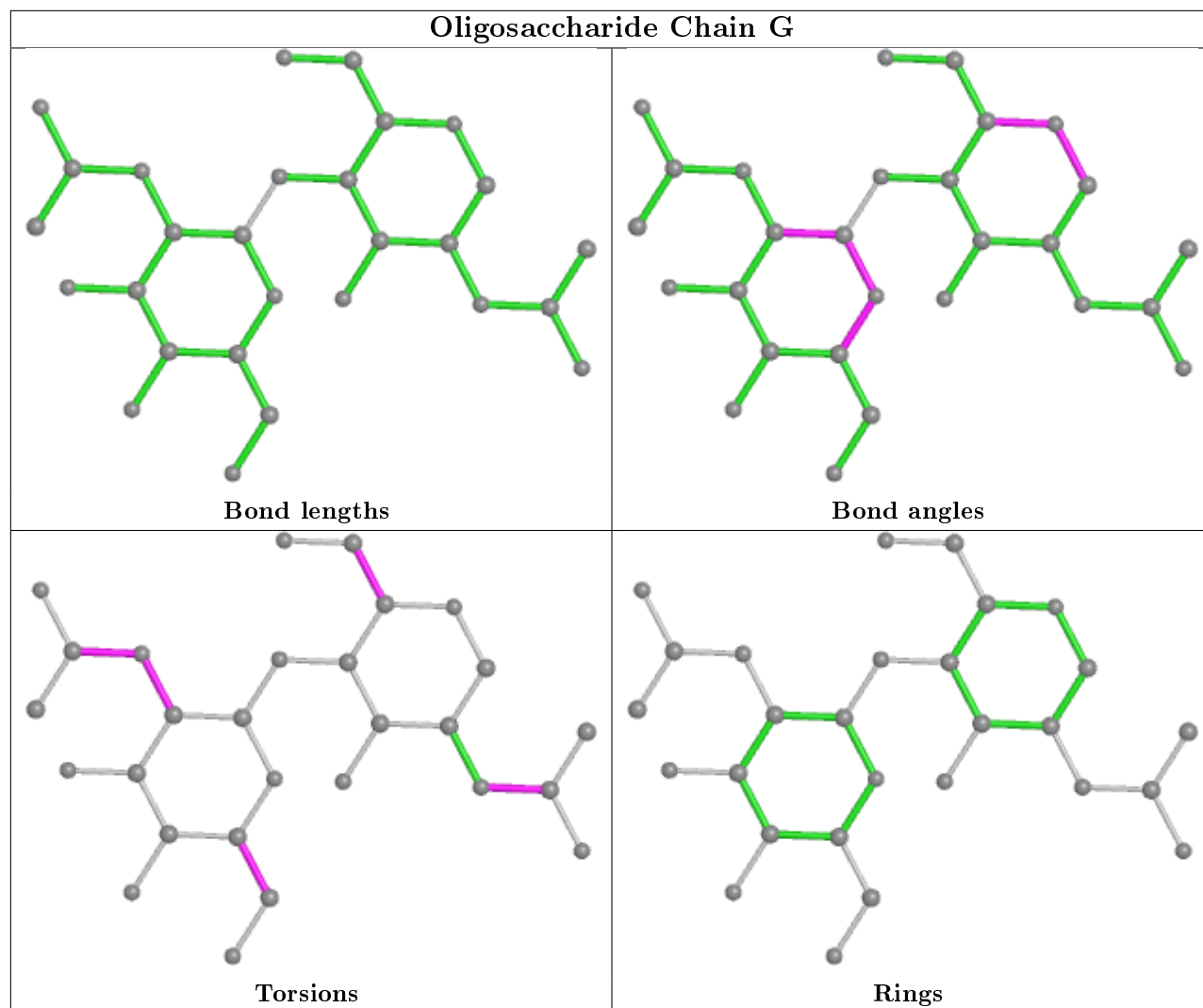
The following is a two-dimensional graphical depiction of Mogul quality analysis of bond lengths, bond angles, torsion angles, and ring geometry for oligosaccharide.

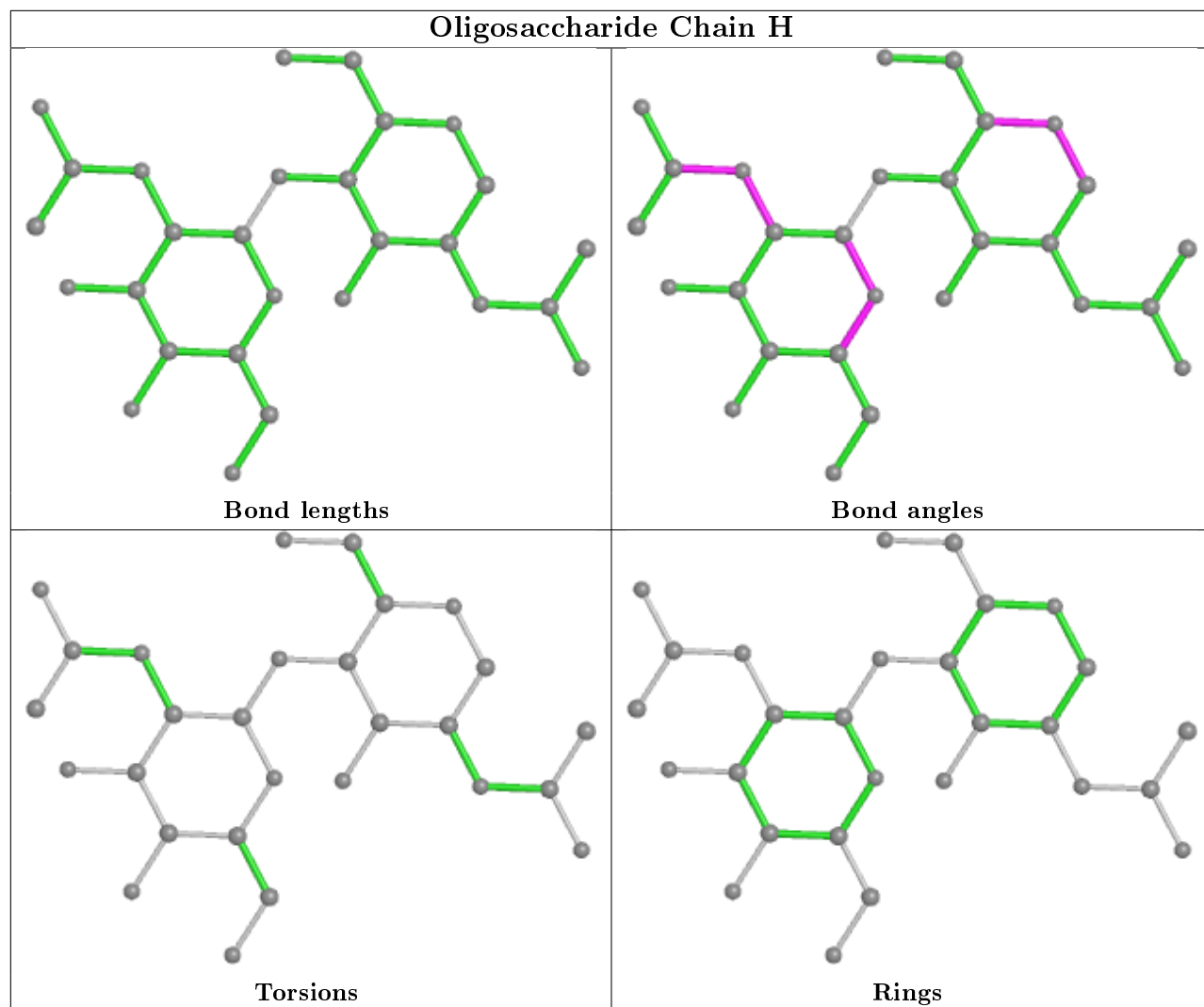
**Oligosaccharide Chain E****Bond lengths****Bond angles****Torsions****Rings**

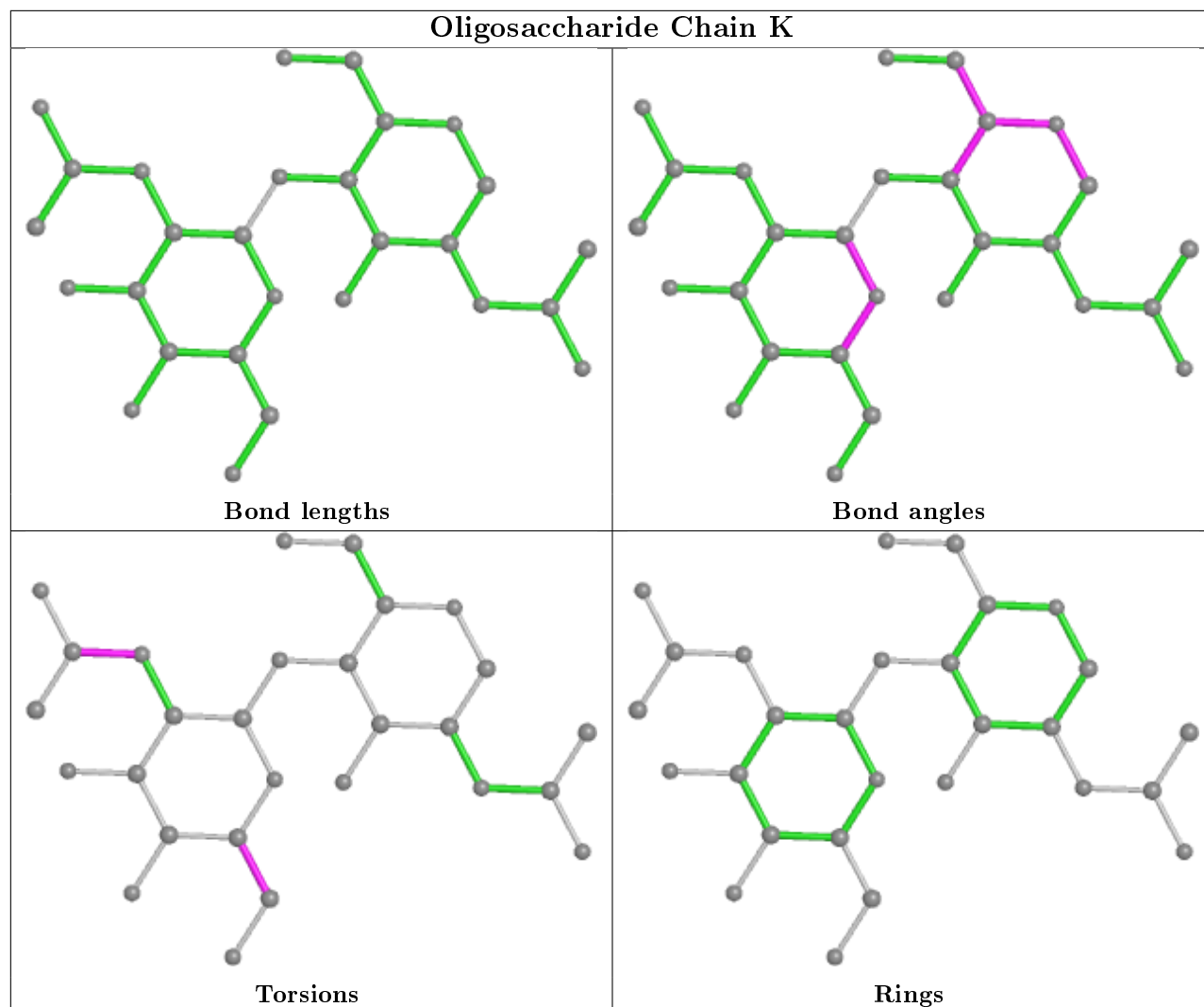


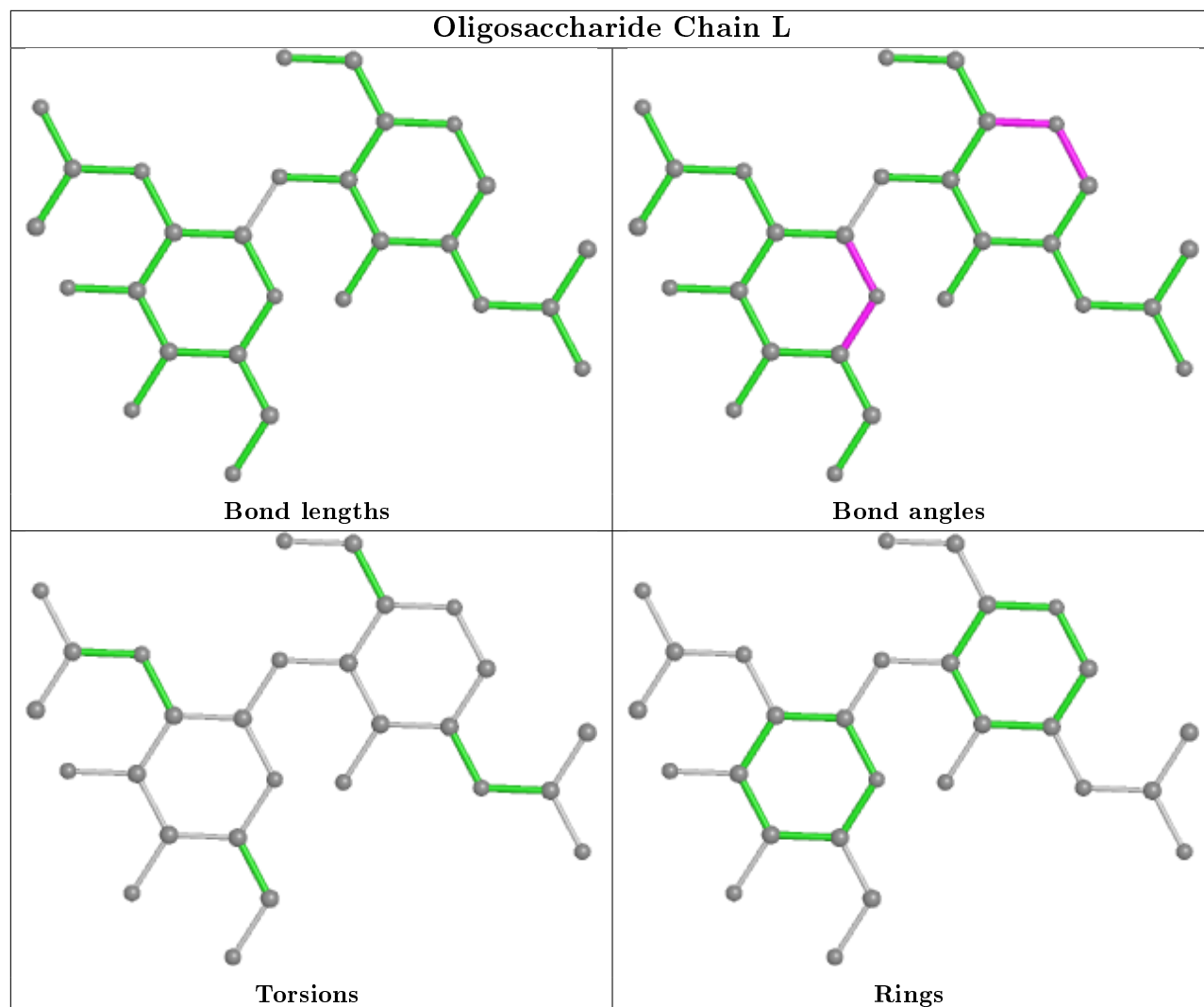


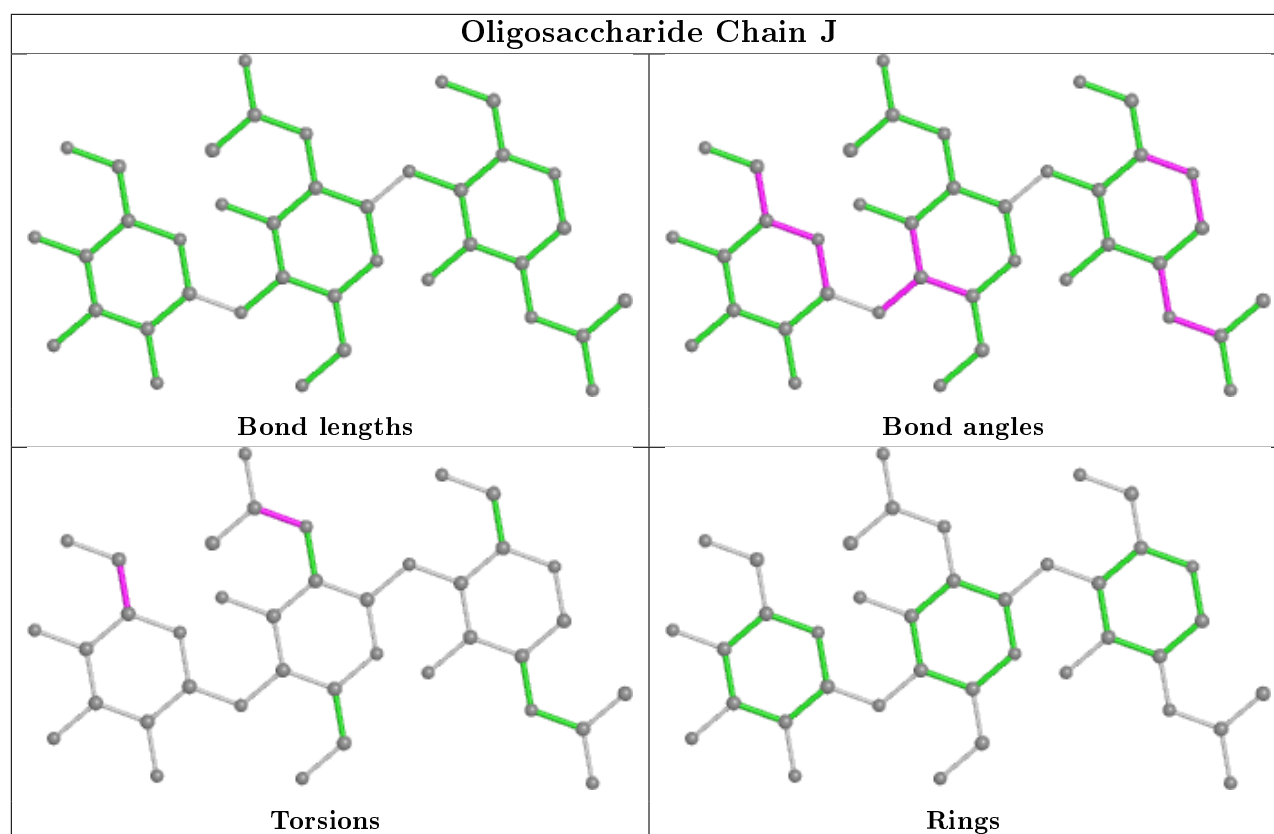
**Oligosaccharide Chain I****Bond lengths****Bond angles****Torsions****Rings**











## 5.6 Ligand geometry [i](#)

2 ligands are modelled in this entry.

In the following table, the Counts columns list the number of bonds (or angles) for which Mogul statistics could be retrieved, the number of bonds (or angles) that are observed in the model and the number of bonds (or angles) that are defined in the Chemical Component Dictionary. The Link column lists molecule types, if any, to which the group is linked. The Z score for a bond length (or angle) is the number of standard deviations the observed value is removed from the expected value. A bond length (or angle) with  $|Z| > 2$  is considered an outlier worth inspection. RMSZ is the root-mean-square of all Z scores of the bond lengths (or angles).

Mol	Type	Chain	Res	Link	Bond lengths			Bond angles		
					Counts	RMSZ	$\# Z  > 2$	Counts	RMSZ	$\# Z  > 2$
6	NAG	B	703	2	14,14,15	0.42	0	17,19,21	1.16	1 (5%)
6	NAG	D	703	2	14,14,15	0.28	0	17,19,21	1.21	2 (11%)

In the following table, the Chirals column lists the number of chiral outliers, the number of chiral centers analysed, the number of these observed in the model and the number defined in the Chemical Component Dictionary. Similar counts are reported in the Torsion and Rings columns. '-' means no outliers of that kind were identified.

Mol	Type	Chain	Res	Link	Chirals	Torsions	Rings
6	NAG	B	703	2	-	2/6/23/26	0/1/1/1
6	NAG	D	703	2	-	4/6/23/26	0/1/1/1

There are no bond length outliers.

All (3) bond angle outliers are listed below:

Mol	Chain	Res	Type	Atoms	Z	Observed(°)	Ideal(°)
6	D	703	NAG	C1-O5-C5	3.88	117.45	112.19
6	B	703	NAG	C1-O5-C5	3.33	116.71	112.19
6	D	703	NAG	C2-N2-C7	-2.11	119.90	122.90

There are no chirality outliers.

All (6) torsion outliers are listed below:

Mol	Chain	Res	Type	Atoms
6	D	703	NAG	C8-C7-N2-C2
6	B	703	NAG	C4-C5-C6-O6
6	D	703	NAG	C4-C5-C6-O6
6	D	703	NAG	O7-C7-N2-C2
6	B	703	NAG	O5-C5-C6-O6
6	D	703	NAG	O5-C5-C6-O6

There are no ring outliers.

No monomer is involved in short contacts.

## 5.7 Other polymers [i](#)

There are no such residues in this entry.

## 5.8 Polymer linkage issues [i](#)

There are no chain breaks in this entry.



## 6 Fit of model and data ⓘ

### 6.1 Protein, DNA and RNA chains ⓘ

In the following table, the column labelled ‘#RSRZ> 2’ contains the number (and percentage) of RSRZ outliers, followed by percent RSRZ outliers for the chain as percentile scores relative to all X-ray entries and entries of similar resolution. The OWAB column contains the minimum, median, 95<sup>th</sup> percentile and maximum values of the occupancy-weighted average B-factor per residue. The column labelled ‘Q< 0.9’ lists the number of (and percentage) of residues with an average occupancy less than 0.9.

Mol	Chain	Analysed	<RSRZ>	#RSRZ>2	OWAB(Å <sup>2</sup> )	Q<0.9
1	A	424/427 (99%)	-0.52	0 100 100	21, 33, 54, 82	0
1	C	424/427 (99%)	-0.38	3 (0%) 87 86	22, 35, 70, 98	0
2	B	149/157 (94%)	0.35	14 (9%) 8 7	18, 47, 112, 172	0
2	D	149/157 (94%)	0.65	23 (15%) 2 1	31, 55, 143, 172	0
All	All	1146/1168 (98%)	-0.20	40 (3%) 44 43	18, 37, 85, 172	0

All (40) RSRZ outliers are listed below:

Mol	Chain	Res	Type	RSRZ
2	D	32	GLY	10.4
2	B	34	GLY	9.2
2	B	32	GLY	7.8
2	D	37	ALA	7.8
2	D	145	ASN	6.1
2	D	35	GLY	6.1
2	B	37	ALA	6.0
2	D	157	PHE	6.0
2	D	36	GLY	5.5
2	D	38	SER	5.2
2	D	31	ASN	5.1
2	D	33	GLY	5.0
1	C	270	ILE	4.9
2	B	33	GLY	4.4
2	B	36	GLY	4.3
2	D	43	GLN	3.9
2	B	157	PHE	3.7
2	D	42	THR	3.4
2	D	39	VAL	3.4
2	B	35	GLY	3.3
2	D	44	ALA	3.3

*Continued on next page...*

*Continued from previous page...*

Mol	Chain	Res	Type	RSRZ
2	D	146	CYS	3.2
1	C	272	ASN	3.1
2	B	16	PHE	3.1
2	D	27	TRP	3.1
1	C	236	LYS	3.1
2	D	9	PHE	3.0
2	D	29	ARG	2.9
2	D	143	SER	2.8
2	B	38	SER	2.8
2	B	131	ALA	2.7
2	D	34	GLY	2.7
2	B	22	ALA	2.6
2	B	9	PHE	2.5
2	B	44	ALA	2.4
2	D	30	SER	2.4
2	D	144	GLU	2.3
2	B	43	GLN	2.3
2	D	149	SER	2.3
2	D	18	ALA	2.0

## 6.2 Non-standard residues in protein, DNA, RNA chains [i](#)

There are no non-standard protein/DNA/RNA residues in this entry.

## 6.3 Carbohydrates [i](#)

In the following table, the Atoms column lists the number of modelled atoms in the group and the number defined in the chemical component dictionary. The B-factors column lists the minimum, median, 95<sup>th</sup> percentile and maximum values of B factors of atoms in the group. The column labelled 'Q< 0.9' lists the number of atoms with occupancy less than 0.9.

Mol	Type	Chain	Res	Atoms	RSCC	RSR	B-factors( $\text{\AA}^2$ )	Q<0.9
5	BMA	J	3	11/12	0.62	0.22	85,92,97,99	0
4	NAG	G	2	14/15	0.82	0.19	61,70,74,80	0
4	NAG	K	2	14/15	0.86	0.15	56,64,71,75	0
3	BMA	I	3	11/12	0.86	0.13	39,42,47,48	0
3	MAN	I	6	11/12	0.87	0.12	45,55,59,59	0
3	NAG	E	2	14/15	0.89	0.15	28,37,43,51	0
3	NAG	I	2	14/15	0.90	0.14	33,39,44,47	0
4	NAG	G	1	14/15	0.91	0.16	54,58,59,61	0
3	MAN	E	5	11/12	0.91	0.14	29,35,41,41	0

*Continued on next page...*

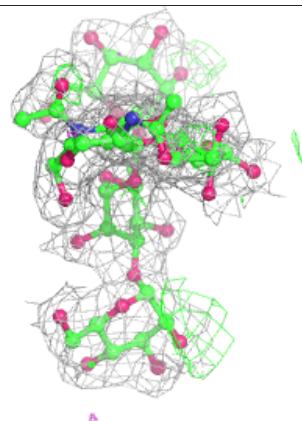
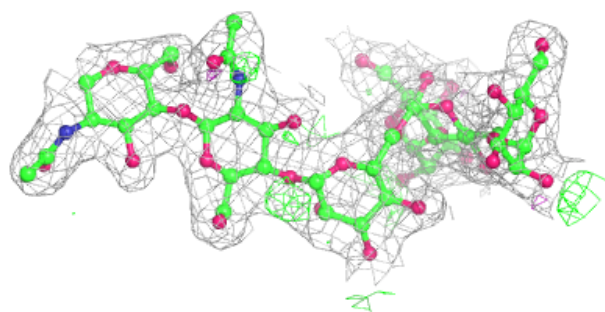
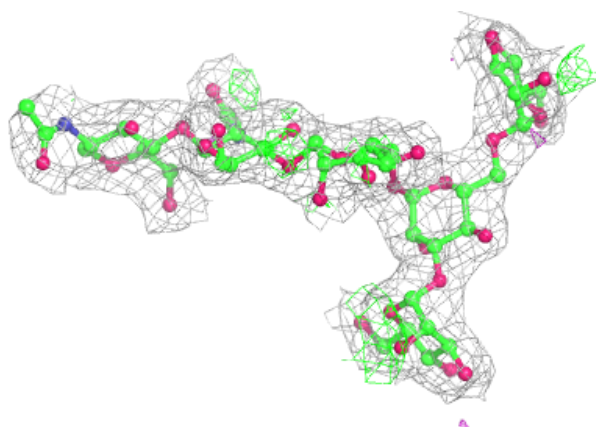
*Continued from previous page...*

Mol	Type	Chain	Res	Atoms	RSCC	RSR	B-factors( $\text{\AA}^2$ )	Q<0.9
4	NAG	K	1	14/15	0.91	0.17	63,68,78,79	0
3	BMA	F	3	11/12	0.91	0.22	39,44,48,57	0
3	MAN	F	6	11/12	0.91	0.15	35,40,43,47	0
3	MAN	E	6	11/12	0.92	0.12	29,31,36,40	0
3	MAN	F	5	11/12	0.92	0.18	46,56,60,63	0
3	MAN	I	5	11/12	0.92	0.12	41,43,45,50	0
3	BMA	E	3	11/12	0.93	0.12	30,33,39,40	0
4	NAG	L	2	14/15	0.94	0.13	42,49,56,58	0
4	NAG	H	2	14/15	0.94	0.14	43,49,58,59	0
3	NAG	I	1	14/15	0.95	0.13	29,35,41,41	0
3	MAN	I	4	11/12	0.95	0.12	33,36,46,46	0
5	NAG	J	2	14/15	0.95	0.11	42,48,57,58	0
5	NAG	J	1	14/15	0.95	0.10	29,33,37,44	0
3	MAN	F	4	11/12	0.95	0.12	30,40,45,46	0
3	NAG	F	2	14/15	0.96	0.11	31,35,39,46	0
4	NAG	H	1	14/15	0.96	0.11	26,30,34,37	0
3	NAG	F	1	14/15	0.97	0.10	27,32,36,37	0
4	NAG	L	1	14/15	0.97	0.11	31,36,40,41	0
3	NAG	E	1	14/15	0.97	0.09	29,33,43,43	0
3	MAN	E	4	11/12	0.98	0.10	27,30,33,34	0

The following is a graphical depiction of the model fit to experimental electron density for oligosaccharide. Each fit is shown from different orientation to approximate a three-dimensional view.

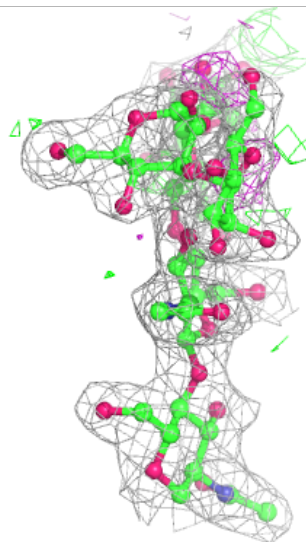
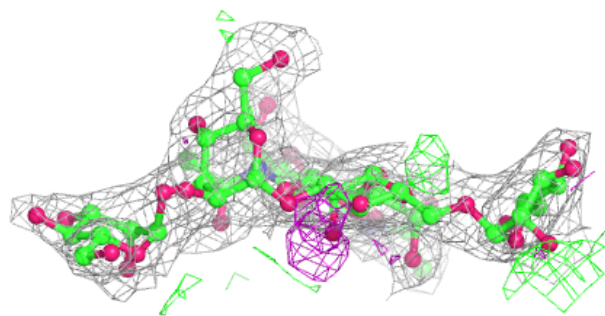
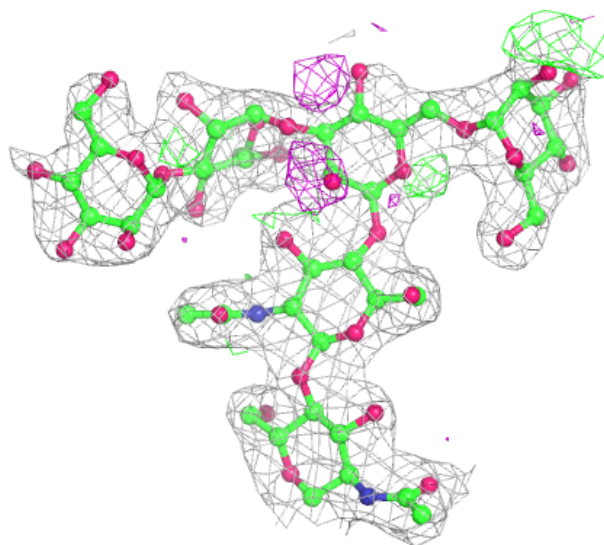
**Electron density around Chain E:**

$2mF_o-DF_c$  (at 0.7 rmsd) in gray  
 $mF_o-DF_c$  (at 3 rmsd) in purple (negative)  
and green (positive)



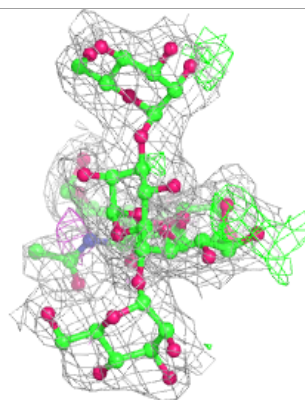
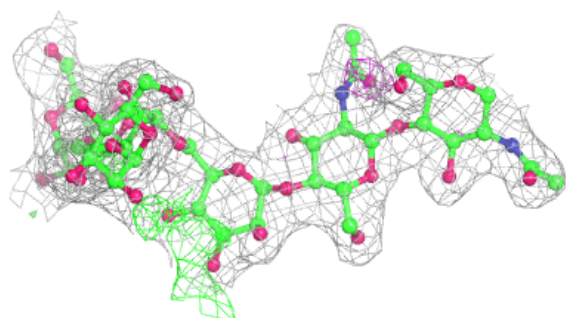
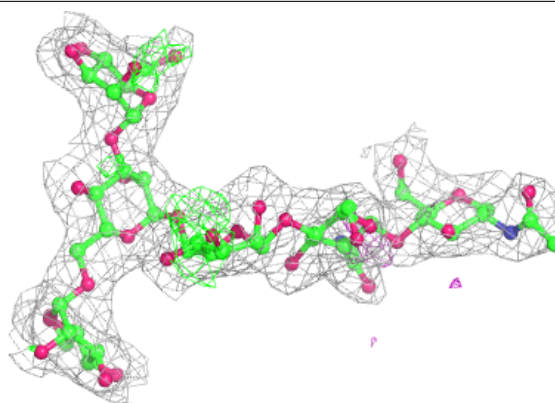
**Electron density around Chain F:**

$2mF_o-DF_c$  (at 0.7 rmsd) in gray  
 $mF_o-DF_c$  (at 3 rmsd) in purple (negative)  
and green (positive)

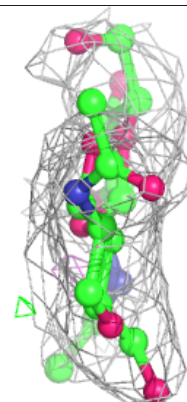
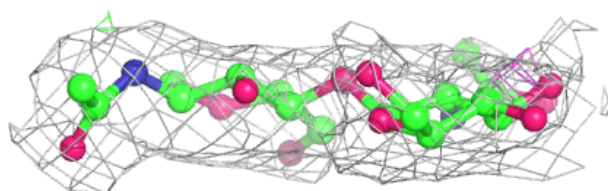
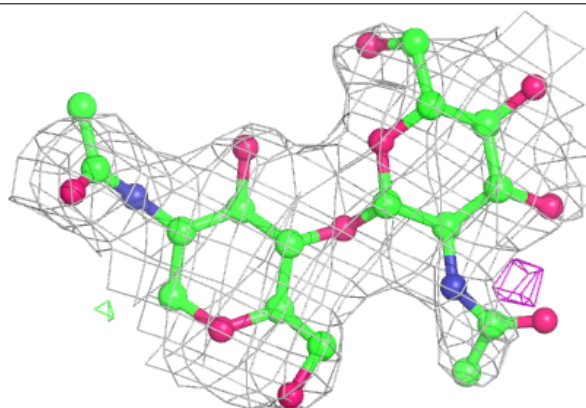


**Electron density around Chain I:**

$2mF_o-DF_c$  (at 0.7 rmsd) in gray  
 $mF_o-DF_c$  (at 3 rmsd) in purple (negative)  
and green (positive)

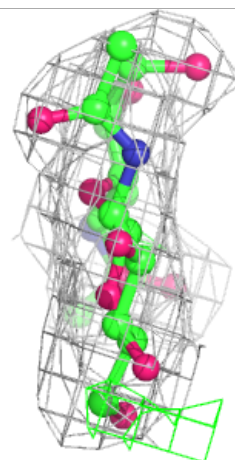
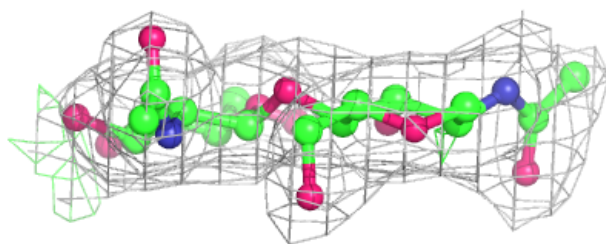
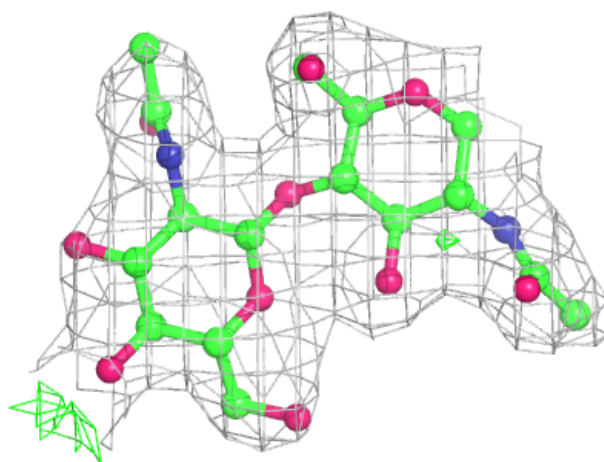
**Electron density around Chain G:**

$2mF_o-DF_c$  (at 0.7 rmsd) in gray  
 $mF_o-DF_c$  (at 3 rmsd) in purple (negative)  
and green (positive)



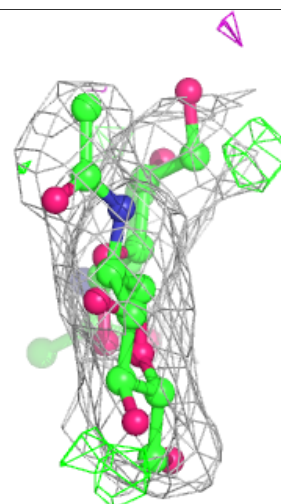
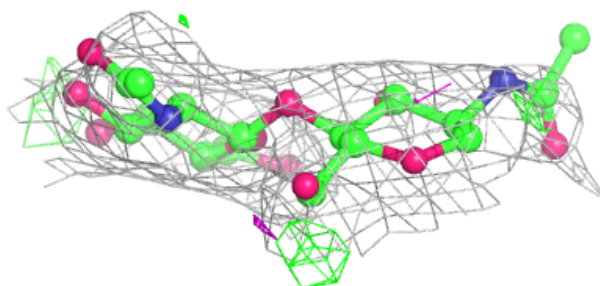
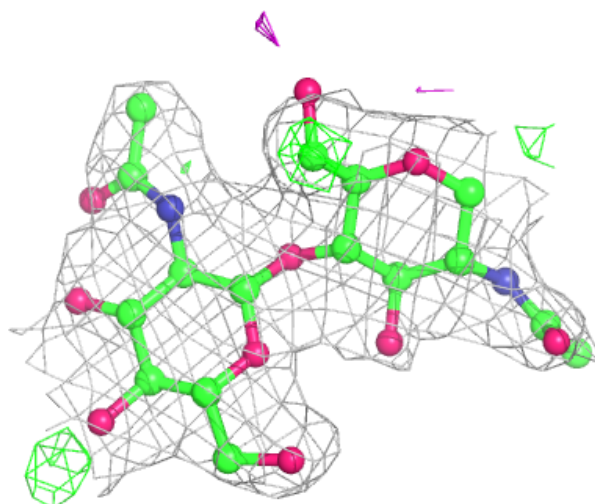
**Electron density around Chain H:**

$2mF_o-DF_c$  (at 0.7 rmsd) in gray  
 $mF_o-DF_c$  (at 3 rmsd) in purple (negative)  
and green (positive)



**Electron density around Chain K:**

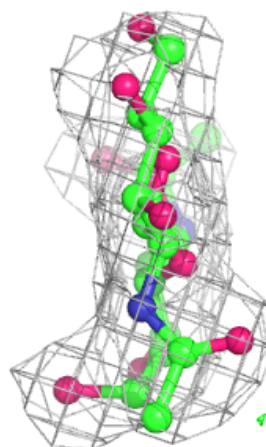
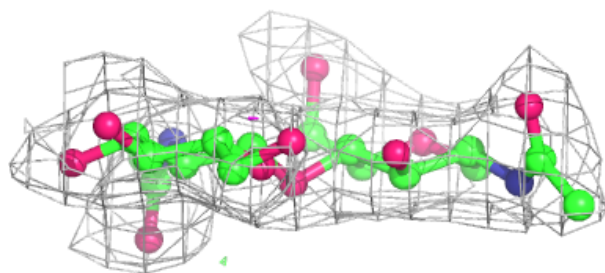
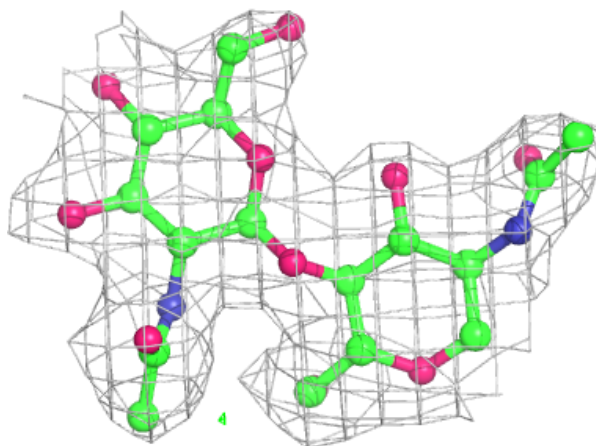
$2mF_o-DF_c$  (at 0.7 rmsd) in gray  
 $mF_o-DF_c$  (at 3 rmsd) in purple (negative)  
and green (positive)

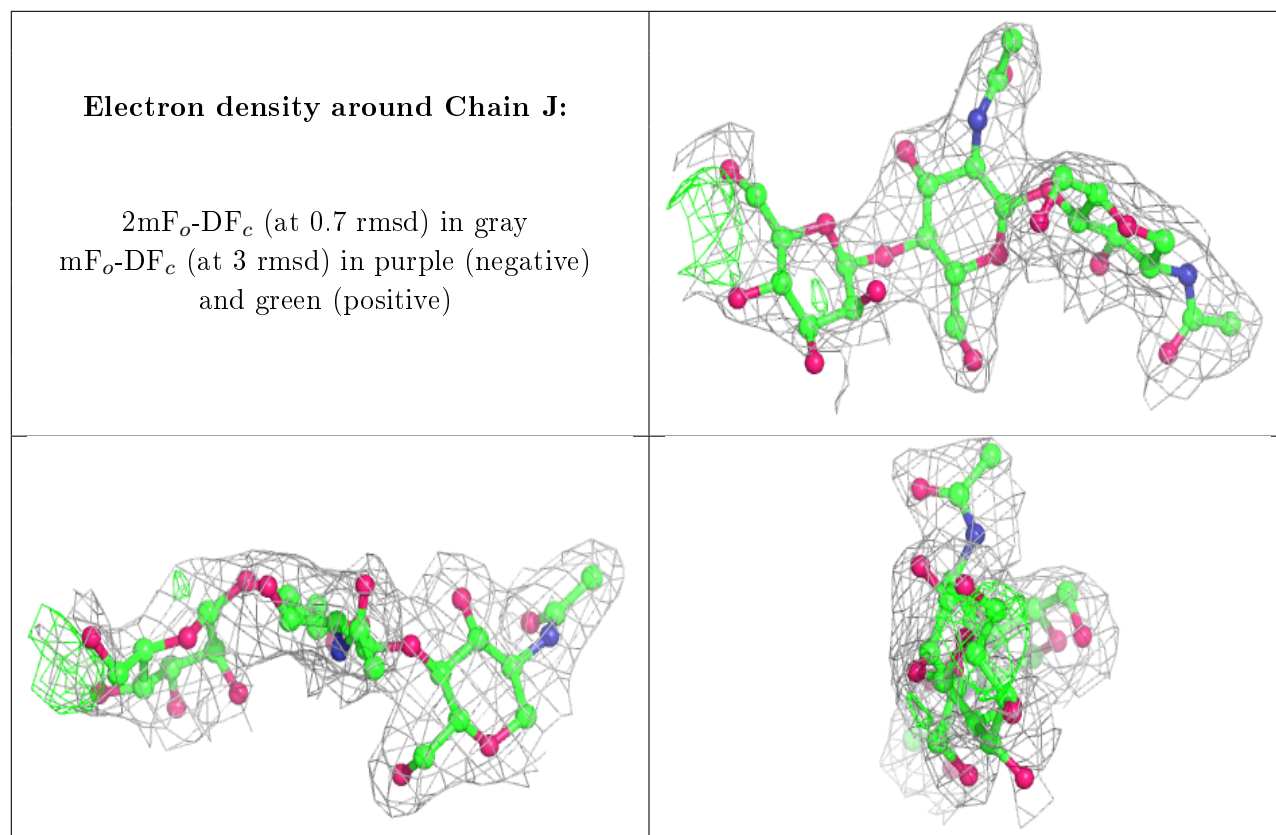




**Electron density around Chain L:**

$2mF_o-DF_c$  (at 0.7 rmsd) in gray  
 $mF_o-DF_c$  (at 3 rmsd) in purple (negative)  
and green (positive)





## 6.4 Ligands [i](#)

In the following table, the Atoms column lists the number of modelled atoms in the group and the number defined in the chemical component dictionary. The B-factors column lists the minimum, median, 95<sup>th</sup> percentile and maximum values of B factors of atoms in the group. The column labelled 'Q< 0.9' lists the number of atoms with occupancy less than 0.9.

Mol	Type	Chain	Res	Atoms	RSCC	RSR	B-factors( $\text{\AA}^2$ )	Q<0.9
6	NAG	D	703	14/15	0.82	0.23	76,87,91,92	0
6	NAG	B	703	14/15	0.89	0.22	49,56,63,66	0

## 6.5 Other polymers [i](#)

There are no such residues in this entry.