



Full wwPDB X-ray Structure Validation Report ⓘ

Sep 13, 2022 – 04:02 PM EDT

PDB ID : 8E6A
Title : Crystal structure of SARS-CoV-2 3CL protease in complex with a p-chlorophenylethanol based inhibitor
Authors : Lovell, S.; Liu, L.; Battaile, K.P.; Dampalla, C.S.; Groutas, W.C.
Deposited on : 2022-08-22
Resolution : 2.05 Å(reported)

This is a Full wwPDB X-ray Structure Validation Report for a publicly released PDB entry.

We welcome your comments at validation@mail.wwpdb.org

A user guide is available at

<https://www.wwpdb.org/validation/2017/XrayValidationReportHelp>

with specific help available everywhere you see the ⓘ symbol.

The types of validation reports are described at <http://www.wwpdb.org/validation/2017/FAQs#types>.

The following versions of software and data (see [references ⓘ](#)) were used in the production of this report:

MolProbity	:	4.02b-467
Mogul	:	1.8.5 (274361), CSD as541be (2020)
Xtriage (Phenix)	:	1.13
EDS	:	2.29
buster-report	:	1.1.7 (2018)
Percentile statistics	:	20191225.v01 (using entries in the PDB archive December 25th 2019)
Refmac	:	5.8.0158
CCP4	:	7.0.044 (Gargrove)
Ideal geometry (proteins)	:	Engh & Huber (2001)
Ideal geometry (DNA, RNA)	:	Parkinson et al. (1996)
Validation Pipeline (wwPDB-VP)	:	2.29

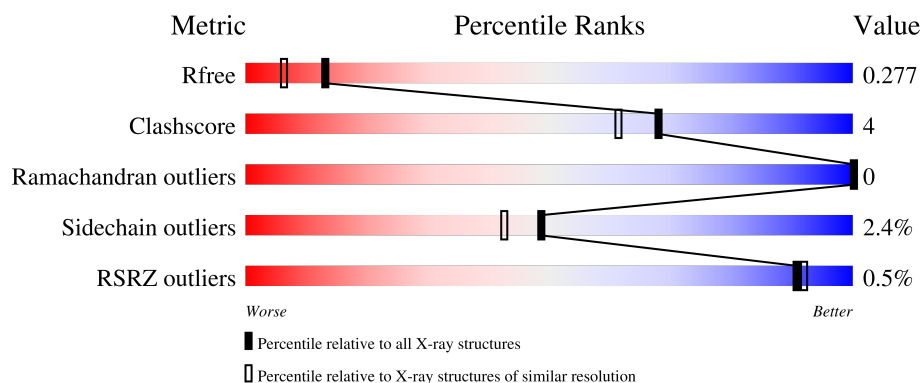
1 Overall quality at a glance

The following experimental techniques were used to determine the structure:

X-RAY DIFFRACTION

The reported resolution of this entry is 2.05 Å.

Percentile scores (ranging between 0-100) for global validation metrics of the entry are shown in the following graphic. The table shows the number of entries on which the scores are based.



Metric	Whole archive (#Entries)	Similar resolution (#Entries, resolution range(Å))
R_{free}	130704	1692 (2.04-2.04)
Clashscore	141614	1773 (2.04-2.04)
Ramachandran outliers	138981	1752 (2.04-2.04)
Sidechain outliers	138945	1752 (2.04-2.04)
RSRZ outliers	127900	1672 (2.04-2.04)

The table below summarises the geometric issues observed across the polymeric chains and their fit to the electron density. The red, orange, yellow and green segments of the lower bar indicate the fraction of residues that contain outliers for ≥ 3 , 2, 1 and 0 types of geometric quality criteria respectively. A grey segment represents the fraction of residues that are not modelled. The numeric value for each fraction is indicated below the corresponding segment, with a dot representing fractions $\leq 5\%$. The upper red bar (where present) indicates the fraction of residues that have poor fit to the electron density. The numeric value is given above the bar.

Mol	Chain	Length	Quality of chain
1	A	309	<div> <div style="width: 90%;"></div> <div style="width: 6%;"></div> <div style="width: 4%;"></div> <div style="width: 2%;"></div> </div>
1	B	309	<div> <div style="width: 82%;"></div> <div style="width: 14%;"></div> <div style="width: 4%;"></div> </div>

2 Entry composition

There are 5 unique types of molecules in this entry. The entry contains 4666 atoms, of which 0 are hydrogens and 0 are deuteriums.

In the tables below, the ZeroOcc column contains the number of atoms modelled with zero occupancy, the AltConf column contains the number of residues with at least one atom in alternate conformation and the Trace column contains the number of residues modelled with at most 2 atoms.

- Molecule 1 is a protein called 3C-like proteinase.

Mol	Chain	Residues	Atoms					ZeroOcc	AltConf	Trace
1	A	297	Total	C	N	O	S	0	0	0
			2186	1391	362	412	21			
1	B	296	Total	C	N	O	S	0	0	0
			2180	1386	360	413	21			

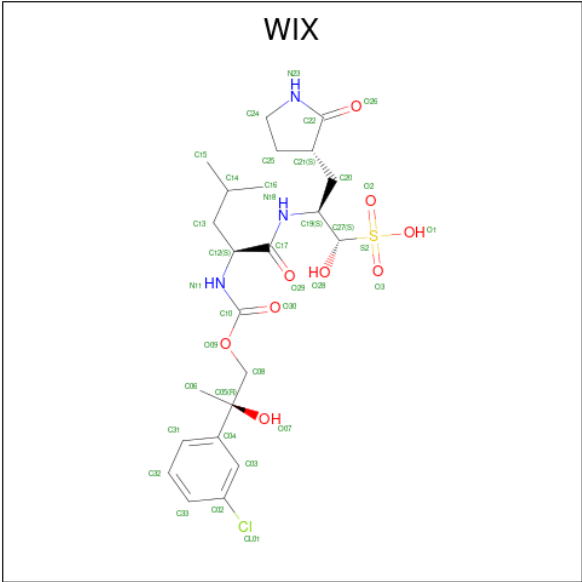
There are 8 discrepancies between the modelled and reference sequences:

Chain	Residue	Modelled	Actual	Comment	Reference
A	-3	SER	-	expression tag	UNP P0DTD1
A	-2	ASN	-	expression tag	UNP P0DTD1
A	-1	ILE	-	expression tag	UNP P0DTD1
A	0	GLY	-	expression tag	UNP P0DTD1
B	-3	SER	-	expression tag	UNP P0DTD1
B	-2	ASN	-	expression tag	UNP P0DTD1
B	-1	ILE	-	expression tag	UNP P0DTD1
B	0	GLY	-	expression tag	UNP P0DTD1

- Molecule 2 is CHLORIDE ION (three-letter code: CL) (formula: Cl).

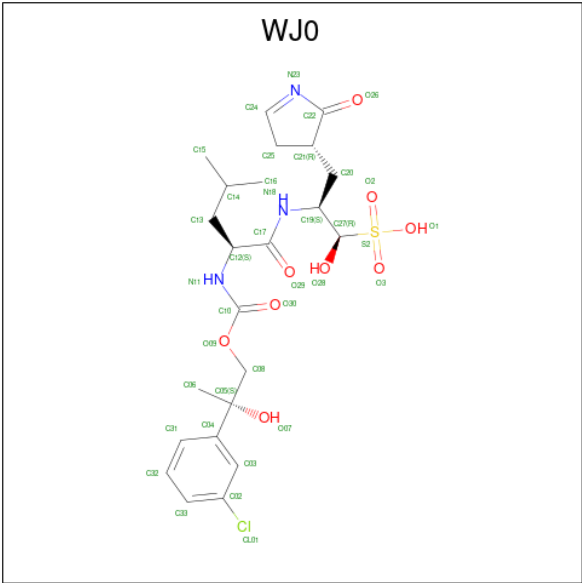
Mol	Chain	Residues	Atoms		ZeroOcc	AltConf
2	A	1	Total	Cl	0	0
			1	1		

- Molecule 3 is (1S,2S)-2-[(N-{[(2R)-2-(3-chlorophenyl)-2-hydroxypropoxy]carbonyl}-L-leucyl)amino]-1-hydroxy-3-[(3S)-2-oxopyrrolidin-3-yl]propane-1-sulfonic acid (three-letter code: WIX) (formula: C₂₃H₃₄ClN₃O₉S).



Mol	Chain	Residues	Atoms					ZeroOcc	AltConf
3	A	1	Total	C	Cl	N	O	0	1
			33	23	1	3	6		
3	B	1	Total	C	Cl	N	O	0	1
			33	23	1	3	6		

- Molecule 4 is (1R,2S)-2-[(N-{[(2S)-2-(3-chlorophenyl)-2-hydroxypropoxy]carbonyl}-L-leucyl)amino]-1-hydroxy-3-[(3R)-2-oxo-3,4-dihydro-2H-pyrrol-3-yl]propane-1-sulfonic acid (three-letter code: WJ0) (formula: C₂₃H₃₂ClN₃O₉S).



Mol	Chain	Residues	Atoms					ZeroOcc	AltConf
4	A	1	Total	C	Cl	N	O	0	1
			33	23	1	3	6		

Continued on next page...

Continued from previous page...

Mol	Chain	Residues	Atoms					ZeroOcc	AltConf
4	B	1	Total	C	Cl	N	O	0	1
			33	23	1	3	6		

- Molecule 5 is water.

Mol	Chain	Residues	Atoms		ZeroOcc	AltConf
5	A	103	Total	O	0	0
			103	103		
5	B	64	Total	O	0	0
			64	64		

3 Residue-property plots [i](#)


These plots are drawn for all protein, RNA, DNA and oligosaccharide chains in the entry. The first graphic for a chain summarises the proportions of the various outlier classes displayed in the second graphic. The second graphic shows the sequence view annotated by issues in geometry and electron density. Residues are color-coded according to the number of geometric quality criteria for which they contain at least one outlier: green = 0, yellow = 1, orange = 2 and red = 3 or more. A red dot above a residue indicates a poor fit to the electron density ($RSRZ > 2$). Stretches of 2 or more consecutive residues without any outlier are shown as a green connector. Residues present in the sample, but not in the model, are shown in grey.

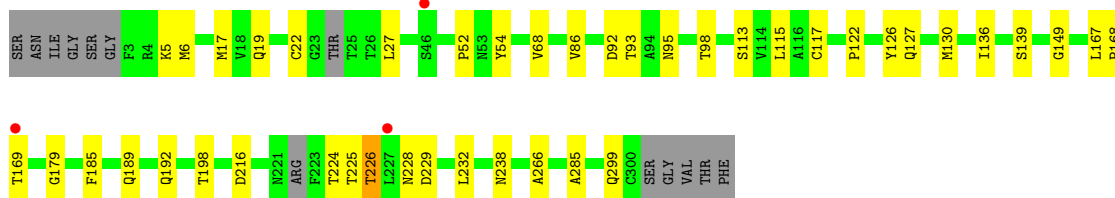
- Molecule 1: 3C-like proteinase

Chain A:  90% 6% .



- Molecule 1: 3C-like proteinase

Chain B:  82% 14% .



4 Data and refinement statistics

Property	Value	Source
Space group	P 1 21 1	Depositor
Cell constants a, b, c, α , β , γ	45.22Å 54.33Å 114.74Å 90.00° 100.93° 90.00°	Depositor
Resolution (Å)	44.40 – 2.05 48.94 – 2.05	Depositor EDS
% Data completeness (in resolution range)	99.0 (44.40-2.05) 99.2 (48.94-2.05)	Depositor EDS
R_{merge}	0.07	Depositor
R_{sym}	(Not available)	Depositor
$\langle I/\sigma(I) \rangle$ ¹	1.98 (at 2.05Å)	Xtriage
Refinement program	PHENIX DEV_4273	Depositor
R, R_{free}	0.202 , 0.277 0.207 , 0.277	Depositor DCC
R_{free} test set	1650 reflections (4.81%)	wwPDB-VP
Wilson B-factor (Å ²)	34.2	Xtriage
Anisotropy	0.151	Xtriage
Bulk solvent k_{sol} (e/Å ³), B_{sol} (Å ²)	0.33 , 51.5	EDS
L-test for twinning ²	$\langle L \rangle = 0.50$, $\langle L^2 \rangle = 0.33$	Xtriage
Estimated twinning fraction	0.000 for h,-k,-h-l	Xtriage
F_o, F_c correlation	0.96	EDS
Total number of atoms	4666	wwPDB-VP
Average B, all atoms (Å ²)	40.0	wwPDB-VP

Xtriage's analysis on translational NCS is as follows: *The analyses of the Patterson function reveals a significant off-origin peak that is 80.24 % of the origin peak, indicating pseudo-translational symmetry. The chance of finding a peak of this or larger height randomly in a structure without pseudo-translational symmetry is equal to 4.6683e-07. The detected translational NCS is most likely also responsible for the elevated intensity ratio.*

¹Intensities estimated from amplitudes.

²Theoretical values of $\langle |L| \rangle$, $\langle L^2 \rangle$ for acentric reflections are 0.5, 0.333 respectively for untwinned datasets, and 0.375, 0.2 for perfectly twinned datasets.

5 Model quality

5.1 Standard geometry

Bond lengths and bond angles in the following residue types are not validated in this section: WJ0, CL, WIX

The Z score for a bond length (or angle) is the number of standard deviations the observed value is removed from the expected value. A bond length (or angle) with $|Z| > 5$ is considered an outlier worth inspection. RMSZ is the root-mean-square of all Z scores of the bond lengths (or angles).

Mol	Chain	Bond lengths		Bond angles	
		RMSZ	$\# Z > 5$	RMSZ	$\# Z > 5$
1	A	0.42	0/2234	0.62	0/3053
1	B	0.44	0/2226	0.61	0/3040
All	All	0.43	0/4460	0.61	0/6093

There are no bond length outliers.

There are no bond angle outliers.

There are no chirality outliers.

There are no planarity outliers.

5.2 Too-close contacts

In the following table, the Non-H and H(model) columns list the number of non-hydrogen atoms and hydrogen atoms in the chain respectively. The H(added) column lists the number of hydrogen atoms added and optimized by MolProbity. The Clashes column lists the number of clashes within the asymmetric unit, whereas Symm-Clashes lists symmetry-related clashes.

Mol	Chain	Non-H	H(model)	H(added)	Clashes	Symm-Clashes
1	A	2186	0	2052	10	0
1	B	2180	0	2045	26	0
2	A	1	0	0	0	0
3	A	33	0	0	0	0
3	B	33	0	0	0	0
4	A	33	0	0	0	0
4	B	33	0	0	0	0
5	A	103	0	0	1	0
5	B	64	0	0	1	0
All	All	4666	0	4097	33	0

The all-atom clashscore is defined as the number of clashes found per 1000 atoms (including

hydrogen atoms). The all-atom clashscore for this structure is 4.

All (33) close contacts within the same asymmetric unit are listed below, sorted by their clash magnitude.

Atom-1	Atom-2	Interatomic distance (Å)	Clash overlap (Å)
1:B:224:THR:HG22	1:B:225:THR:H	1.57	0.70
1:B:130:MET:HA	1:B:130:MET:HE2	1.82	0.62
1:B:115:LEU:HD11	1:B:122:PRO:HB3	1.82	0.62
1:A:285:ALA:HB3	1:B:285:ALA:HB3	1.85	0.59
1:B:224:THR:HA	1:B:266:ALA:HB2	1.85	0.59
1:B:226:THR:HG23	1:B:229:ASP:HB2	1.87	0.56
1:A:52:PRO:HG2	1:A:54:TYR:CE2	2.41	0.54
1:B:127:GLN:HG2	5:B:534:HOH:O	2.09	0.52
1:B:130:MET:HE2	1:B:136:ILE:HG22	1.91	0.52
1:B:167:LEU:HB3	1:B:168:PRO:CD	2.39	0.52
1:B:86:VAL:HG13	1:B:179:GLY:HA2	1.93	0.50
1:B:95:ASN:HB3	1:B:98:THR:OG1	2.12	0.50
1:B:225:THR:HG22	1:B:226:THR:N	2.27	0.50
1:B:17:MET:HG3	1:B:117:CYS:SG	2.53	0.49
1:A:141:LEU:HD11	1:B:299:GLN:O	2.13	0.49
1:A:86:VAL:HG13	1:A:179:GLY:HA2	1.96	0.46
1:A:166:GLU:HG2	1:A:167:LEU:O	2.15	0.46
1:B:198:THR:HG22	1:B:238:ASN:OD1	2.16	0.46
1:B:169:THR:HG22	1:B:169:THR:O	2.17	0.44
1:B:113:SER:O	1:B:149:GLY:HA2	2.17	0.44
1:B:228:ASN:O	1:B:232:LEU:HG	2.17	0.44
1:A:127:GLN:HG2	5:A:548:HOH:O	2.19	0.43
1:A:115:LEU:HD11	1:A:122:PRO:HB3	2.01	0.43
1:B:52:PRO:HG2	1:B:54:TYR:CE2	2.54	0.43
1:A:167:LEU:HB3	1:A:168:PRO:CD	2.49	0.43
1:A:118:TYR:CE1	1:A:144:SER:HB3	2.54	0.42
1:B:130:MET:HE2	1:B:136:ILE:CG2	2.51	0.41
1:B:185:PHE:HA	1:B:192:GLN:OE1	2.21	0.41
1:B:19:GLN:O	1:B:68:VAL:HA	2.21	0.41
1:B:92:ASP:OD1	1:B:93:THR:N	2.54	0.41
1:B:224:THR:HA	1:B:266:ALA:CB	2.51	0.40
1:A:4:ARG:HD3	1:B:126:TYR:CD1	2.56	0.40
1:B:226:THR:HG23	1:B:229:ASP:CB	2.52	0.40

There are no symmetry-related clashes.

5.3 Torsion angles

5.3.1 Protein backbone

In the following table, the Percentiles column shows the percent Ramachandran outliers of the chain as a percentile score with respect to all X-ray entries followed by that with respect to entries of similar resolution.

The Analysed column shows the number of residues for which the backbone conformation was analysed, and the total number of residues.

Mol	Chain	Analysed	Favoured	Allowed	Outliers	Percentiles	
1	A	293/309 (95%)	290 (99%)	3 (1%)	0	100	100
1	B	290/309 (94%)	286 (99%)	4 (1%)	0	100	100
All	All	583/618 (94%)	576 (99%)	7 (1%)	0	100	100

There are no Ramachandran outliers to report.

5.3.2 Protein sidechains

In the following table, the Percentiles column shows the percent sidechain outliers of the chain as a percentile score with respect to all X-ray entries followed by that with respect to entries of similar resolution.

The Analysed column shows the number of residues for which the sidechain conformation was analysed, and the total number of residues.

Mol	Chain	Analysed	Rotameric	Outliers	Percentiles	
1	A	228/265 (86%)	225 (99%)	3 (1%)	69	67
1	B	228/265 (86%)	220 (96%)	8 (4%)	36	29
All	All	456/530 (86%)	445 (98%)	11 (2%)	49	42

All (11) residues with a non-rotameric sidechain are listed below:

Mol	Chain	Res	Type
1	A	5	LYS
1	A	6	MET
1	A	216	ASP
1	B	5	LYS
1	B	6	MET
1	B	22	CYS
1	B	27	LEU
1	B	139	SER

Continued on next page...

Continued from previous page...

Mol	Chain	Res	Type
1	B	189	GLN
1	B	216	ASP
1	B	226	THR

Sometimes sidechains can be flipped to improve hydrogen bonding and reduce clashes. There are no such sidechains identified.

5.3.3 RNA ⓘ

There are no RNA molecules in this entry.

5.4 Non-standard residues in protein, DNA, RNA chains ⓘ

There are no non-standard protein/DNA/RNA residues in this entry.

5.5 Carbohydrates ⓘ

There are no monosaccharides in this entry.

5.6 Ligand geometry ⓘ

Of 5 ligands modelled in this entry, 1 is monoatomic - leaving 4 for Mogul analysis.

In the following table, the Counts columns list the number of bonds (or angles) for which Mogul statistics could be retrieved, the number of bonds (or angles) that are observed in the model and the number of bonds (or angles) that are defined in the Chemical Component Dictionary. The Link column lists molecule types, if any, to which the group is linked. The Z score for a bond length (or angle) is the number of standard deviations the observed value is removed from the expected value. A bond length (or angle) with $|Z| > 2$ is considered an outlier worth inspection. RMSZ is the root-mean-square of all Z scores of the bond lengths (or angles).

Mol	Type	Chain	Res	Link	Bond lengths			Bond angles		
					Counts	RMSZ	$\# Z > 2$	Counts	RMSZ	$\# Z > 2$
4	WJ0	A	403[B]	1	31,34,38	2.50	11 (35%)	39,47,55	2.03	8 (20%)
4	WJ0	B	402[B]	1	31,34,38	2.46	11 (35%)	39,47,55	2.11	10 (25%)
3	WIX	A	402[A]	1	33,34,38	2.56	13 (39%)	42,47,55	2.10	11 (26%)
3	WIX	B	401[A]	1	33,34,38	2.52	9 (27%)	42,47,55	2.02	10 (23%)

In the following table, the Chirals column lists the number of chiral outliers, the number of chiral

centers analysed, the number of these observed in the model and the number defined in the Chemical Component Dictionary. Similar counts are reported in the Torsion and Rings columns. '-' means no outliers of that kind were identified.

Mol	Type	Chain	Res	Link	Chirals	Torsions	Rings
4	WJ0	A	403[B]	1	-	5/34/44/52	0/2/2/2
4	WJ0	B	402[B]	1	-	1/34/44/52	0/2/2/2
3	WIX	A	402[A]	1	-	10/34/44/52	0/2/2/2
3	WIX	B	401[A]	1	-	7/34/44/52	0/2/2/2

All (44) bond length outliers are listed below:

Mol	Chain	Res	Type	Atoms	Z	Observed(Å)	Ideal(Å)
3	A	402[A]	WIX	C22-N23	7.92	1.42	1.33
3	B	401[A]	WIX	C22-N23	7.64	1.41	1.33
4	B	402[B]	WJ0	C05-C04	6.82	1.59	1.53
4	A	403[B]	WJ0	C06-C05	6.52	1.61	1.53
3	A	402[A]	WIX	C05-C04	6.29	1.58	1.53
3	B	401[A]	WIX	C05-C04	6.29	1.58	1.53
4	A	403[B]	WJ0	C05-C04	5.77	1.58	1.53
4	B	402[B]	WJ0	C27-C19	5.44	1.61	1.52
3	B	401[A]	WIX	C20-C19	4.76	1.65	1.53
4	A	403[B]	WJ0	C27-C19	4.57	1.60	1.52
4	B	402[B]	WJ0	C17-N18	4.27	1.43	1.34
3	A	402[A]	WIX	C06-C05	4.19	1.58	1.53
3	B	401[A]	WIX	C17-N18	4.04	1.42	1.34
3	A	402[A]	WIX	C27-C19	4.00	1.59	1.52
4	A	403[B]	WJ0	C24-N23	3.84	1.47	1.29
4	B	402[B]	WJ0	C20-C19	3.81	1.63	1.53
4	B	402[B]	WJ0	C24-N23	3.78	1.47	1.29
4	A	403[B]	WJ0	C17-N18	3.68	1.42	1.34
3	B	401[A]	WIX	C27-C19	3.36	1.58	1.52
3	B	401[A]	WIX	C02-CL01	3.31	1.81	1.74
4	B	402[B]	WJ0	C02-CL01	3.27	1.81	1.74
4	A	403[B]	WJ0	C02-CL01	3.10	1.81	1.74
3	A	402[A]	WIX	C19-N18	3.00	1.52	1.46
3	A	402[A]	WIX	C21-C22	-2.74	1.48	1.52
3	A	402[A]	WIX	C17-N18	2.63	1.39	1.34
3	B	401[A]	WIX	C19-N18	2.49	1.51	1.46
4	A	403[B]	WJ0	C22-N23	2.43	1.41	1.36
4	B	402[B]	WJ0	C19-N18	2.42	1.51	1.46
4	B	402[B]	WJ0	C22-N23	2.35	1.41	1.36
3	A	402[A]	WIX	O30-C10	2.34	1.26	1.21
4	B	402[B]	WJ0	C10-N11	2.34	1.40	1.34

Continued on next page...

Continued from previous page...

Mol	Chain	Res	Type	Atoms	Z	Observed(Å)	Ideal(Å)
4	A	403[B]	WJ0	O30-C10	2.31	1.26	1.21
3	B	401[A]	WIX	C10-N11	2.28	1.40	1.34
4	B	402[B]	WJ0	O30-C10	2.23	1.25	1.21
3	A	402[A]	WIX	C20-C21	2.22	1.58	1.53
3	A	402[A]	WIX	C12-N11	-2.15	1.41	1.45
4	A	403[B]	WJ0	C03-C02	2.14	1.41	1.38
3	B	401[A]	WIX	O30-C10	2.14	1.25	1.21
4	A	403[B]	WJ0	C31-C04	2.14	1.42	1.39
3	A	402[A]	WIX	C32-C31	2.12	1.43	1.38
3	A	402[A]	WIX	C03-C02	2.11	1.41	1.38
4	A	403[B]	WJ0	C32-C31	2.09	1.43	1.38
4	B	402[B]	WJ0	C12-C17	2.08	1.58	1.52
3	A	402[A]	WIX	C02-CL01	2.07	1.79	1.74

All (39) bond angle outliers are listed below:

Mol	Chain	Res	Type	Atoms	Z	Observed(°)	Ideal(°)
4	A	403[B]	WJ0	O09-C10-N11	6.81	124.34	110.50
3	A	402[A]	WIX	O09-C10-N11	6.72	124.16	110.50
4	B	402[B]	WJ0	O09-C10-N11	6.22	123.15	110.50
3	B	401[A]	WIX	O09-C10-N11	6.17	123.04	110.50
3	A	402[A]	WIX	O09-C10-O30	-5.64	113.42	124.25
4	A	403[B]	WJ0	O09-C10-O30	-5.48	113.74	124.25
4	B	402[B]	WJ0	O09-C10-O30	-5.21	114.26	124.25
3	B	401[A]	WIX	O09-C10-O30	-5.14	114.39	124.25
4	B	402[B]	WJ0	C21-C25-C24	4.94	107.11	103.00
3	A	402[A]	WIX	C12-C17-N18	3.77	124.97	116.70
3	B	401[A]	WIX	C12-C17-N18	3.73	124.89	116.70
4	B	402[B]	WJ0	C12-C17-N18	3.73	124.88	116.70
3	B	401[A]	WIX	C24-N23-C22	-3.57	106.83	113.84
3	A	402[A]	WIX	C24-N23-C22	-3.44	107.09	113.84
4	A	403[B]	WJ0	C21-C25-C24	3.40	105.83	103.00
3	A	402[A]	WIX	O26-C22-C21	-3.37	122.28	126.23
4	A	403[B]	WJ0	C12-C17-N18	3.35	124.05	116.70
3	B	401[A]	WIX	O29-C17-N18	-3.32	116.78	122.93
3	A	402[A]	WIX	O29-C17-N18	-3.30	116.81	122.93
4	B	402[B]	WJ0	O29-C17-N18	-3.29	116.83	122.93
3	B	401[A]	WIX	C08-O09-C10	2.99	120.00	115.56
3	B	401[A]	WIX	O26-C22-N23	-2.99	121.40	125.54
3	B	401[A]	WIX	C25-C24-N23	2.95	107.75	103.43
4	B	402[B]	WJ0	C25-C21-C22	-2.94	102.26	103.95
4	B	402[B]	WJ0	C08-O09-C10	2.94	119.93	115.56

Continued on next page...

Continued from previous page...

Mol	Chain	Res	Type	Atoms	Z	Observed(°)	Ideal(°)
4	B	402[B]	WJ0	C21-C22-N23	2.90	115.51	111.92
3	A	402[A]	WIX	C25-C24-N23	2.86	107.62	103.43
4	A	403[B]	WJ0	O29-C17-N18	-2.75	117.84	122.93
3	B	401[A]	WIX	O28-C27-C19	-2.74	104.88	111.95
4	A	403[B]	WJ0	O28-C27-C19	-2.66	105.09	111.95
3	A	402[A]	WIX	O28-C27-C19	-2.59	105.27	111.95
3	A	402[A]	WIX	C19-N18-C17	2.59	127.32	123.20
3	B	401[A]	WIX	O26-C22-C21	-2.58	123.20	126.23
4	B	402[B]	WJ0	C20-C21-C22	2.28	114.61	111.15
3	A	402[A]	WIX	C27-C19-N18	-2.23	104.61	109.60
4	A	403[B]	WJ0	C25-C21-C22	-2.18	102.69	103.95
4	A	403[B]	WJ0	C21-C22-N23	2.17	114.60	111.92
4	B	402[B]	WJ0	O26-C22-N23	-2.02	122.14	125.05
3	A	402[A]	WIX	O26-C22-N23	-2.02	122.74	125.54

There are no chirality outliers.

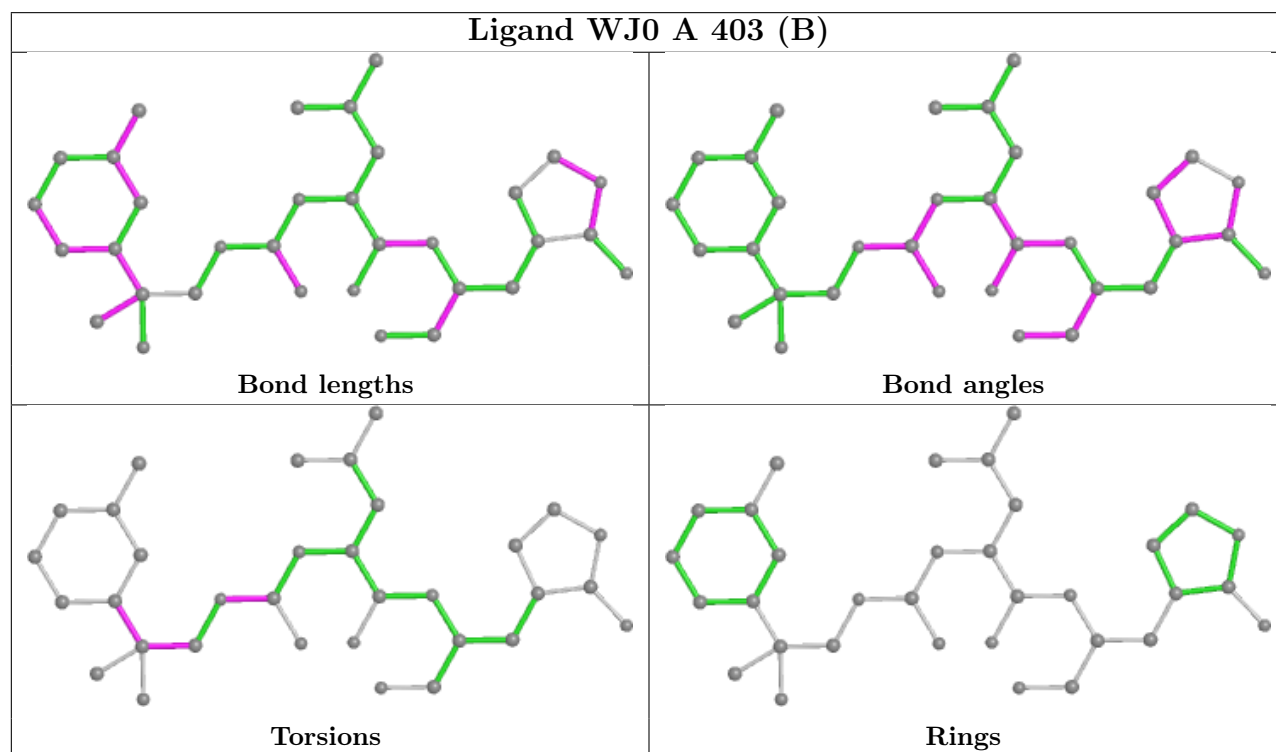
All (23) torsion outliers are listed below:

Mol	Chain	Res	Type	Atoms
3	A	402[A]	WIX	C03-C04-C05-C08
3	A	402[A]	WIX	C03-C04-C05-O07
3	A	402[A]	WIX	C31-C04-C05-C08
3	A	402[A]	WIX	C31-C04-C05-O07
3	A	402[A]	WIX	C04-C05-C08-O09
3	B	401[A]	WIX	C03-C04-C05-O07
3	B	401[A]	WIX	C31-C04-C05-O07
3	B	401[A]	WIX	C04-C05-C08-O09
4	A	403[B]	WJ0	C04-C05-C08-O09
4	B	402[B]	WJ0	C04-C05-C08-O09
4	A	403[B]	WJ0	N11-C10-O09-C08
4	A	403[B]	WJ0	O30-C10-O09-C08
3	A	402[A]	WIX	C31-C04-C05-C06
3	B	401[A]	WIX	C03-C04-C05-C06
3	B	401[A]	WIX	C31-C04-C05-C06
3	A	402[A]	WIX	O30-C10-O09-C08
3	A	402[A]	WIX	C06-C05-C08-O09
3	B	401[A]	WIX	C06-C05-C08-O09
3	A	402[A]	WIX	N11-C10-O09-C08
4	A	403[B]	WJ0	C03-C04-C05-C08
3	A	402[A]	WIX	C03-C04-C05-C06
4	A	403[B]	WJ0	C03-C04-C05-C06
3	B	401[A]	WIX	O07-C05-C08-O09

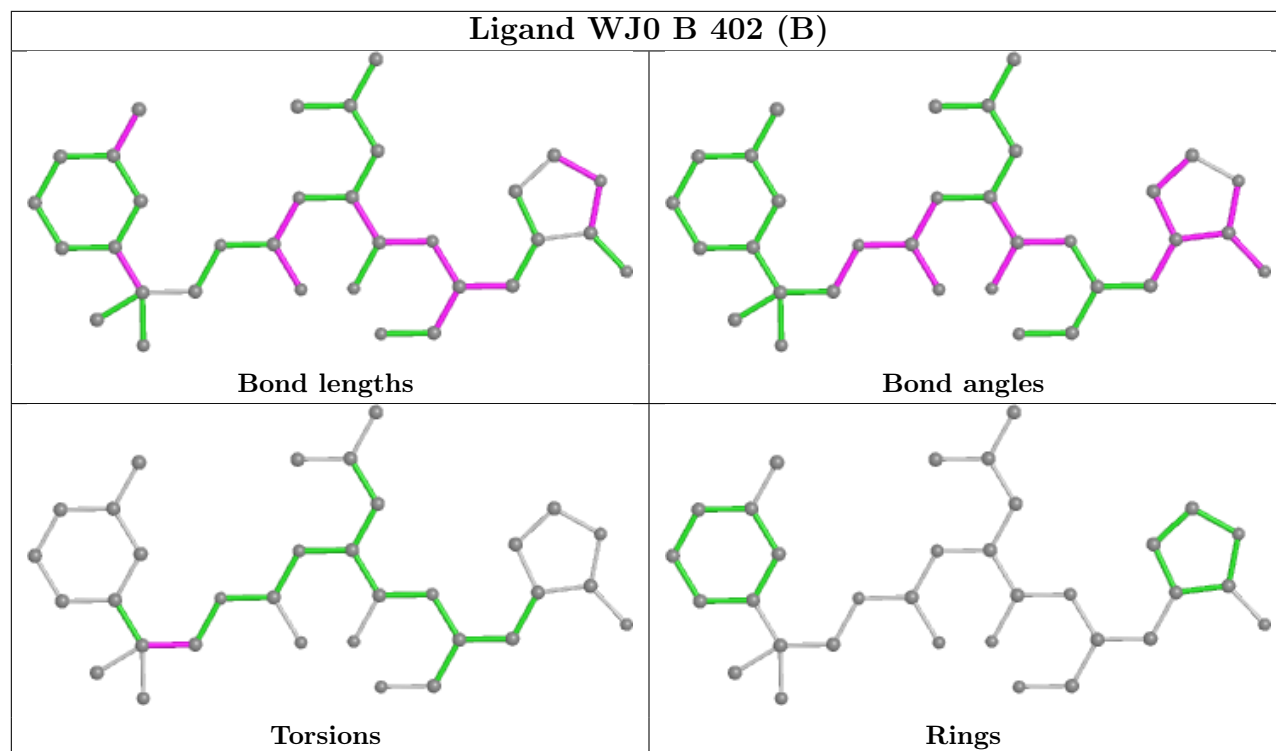
There are no ring outliers.

No monomer is involved in short contacts.

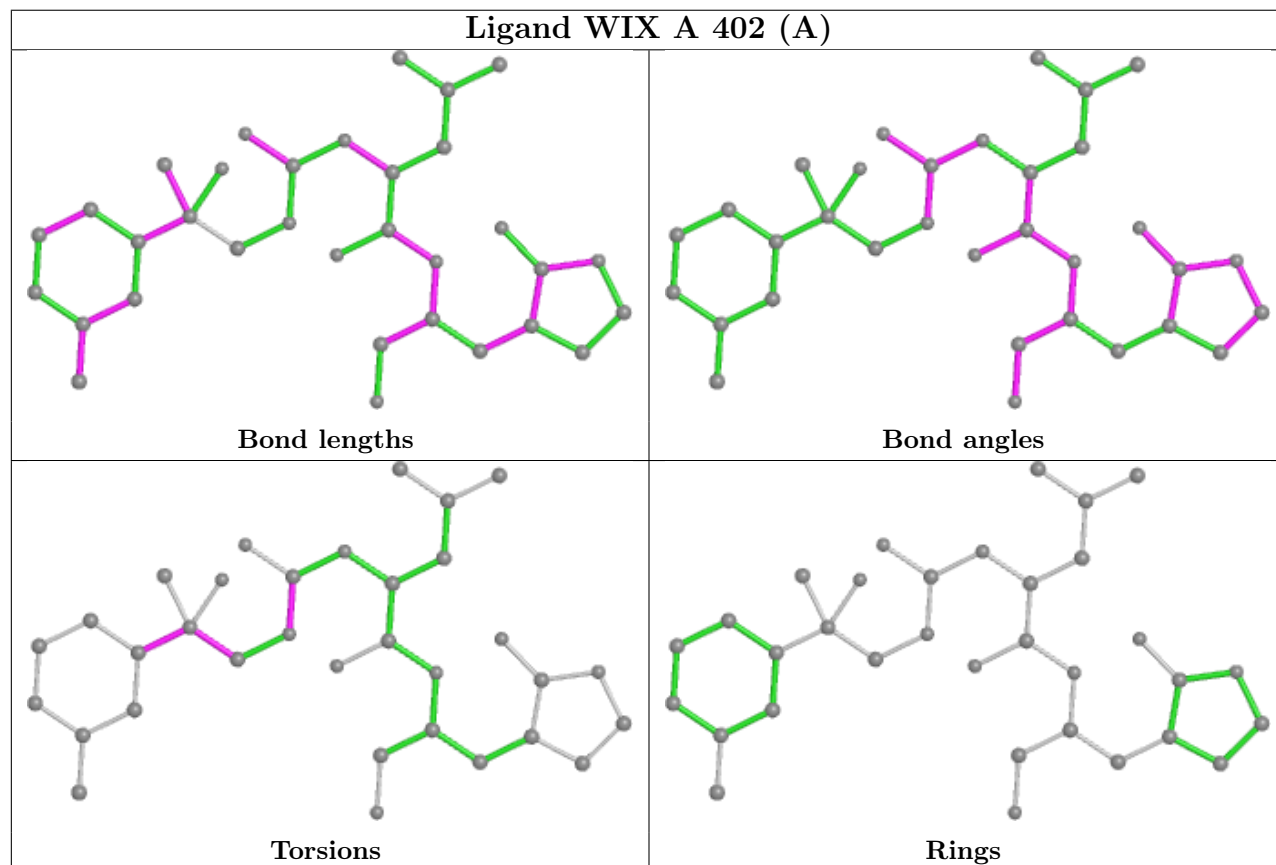
The following is a two-dimensional graphical depiction of Mogul quality analysis of bond lengths, bond angles, torsion angles, and ring geometry for all instances of the Ligand of Interest. In addition, ligands with molecular weight > 250 and outliers as shown on the validation Tables will also be included. For torsion angles, if less than 5% of the Mogul distribution of torsion angles is within 10 degrees of the torsion angle in question, then that torsion angle is considered an outlier. Any bond that is central to one or more torsion angles identified as an outlier by Mogul will be highlighted in the graph. For rings, the root-mean-square deviation (RMSD) between the ring in question and similar rings identified by Mogul is calculated over all ring torsion angles. If the average RMSD is greater than 60 degrees and the minimal RMSD between the ring in question and any Mogul-identified rings is also greater than 60 degrees, then that ring is considered an outlier. The outliers are highlighted in purple. The color gray indicates Mogul did not find sufficient equivalents in the CSD to analyse the geometry.

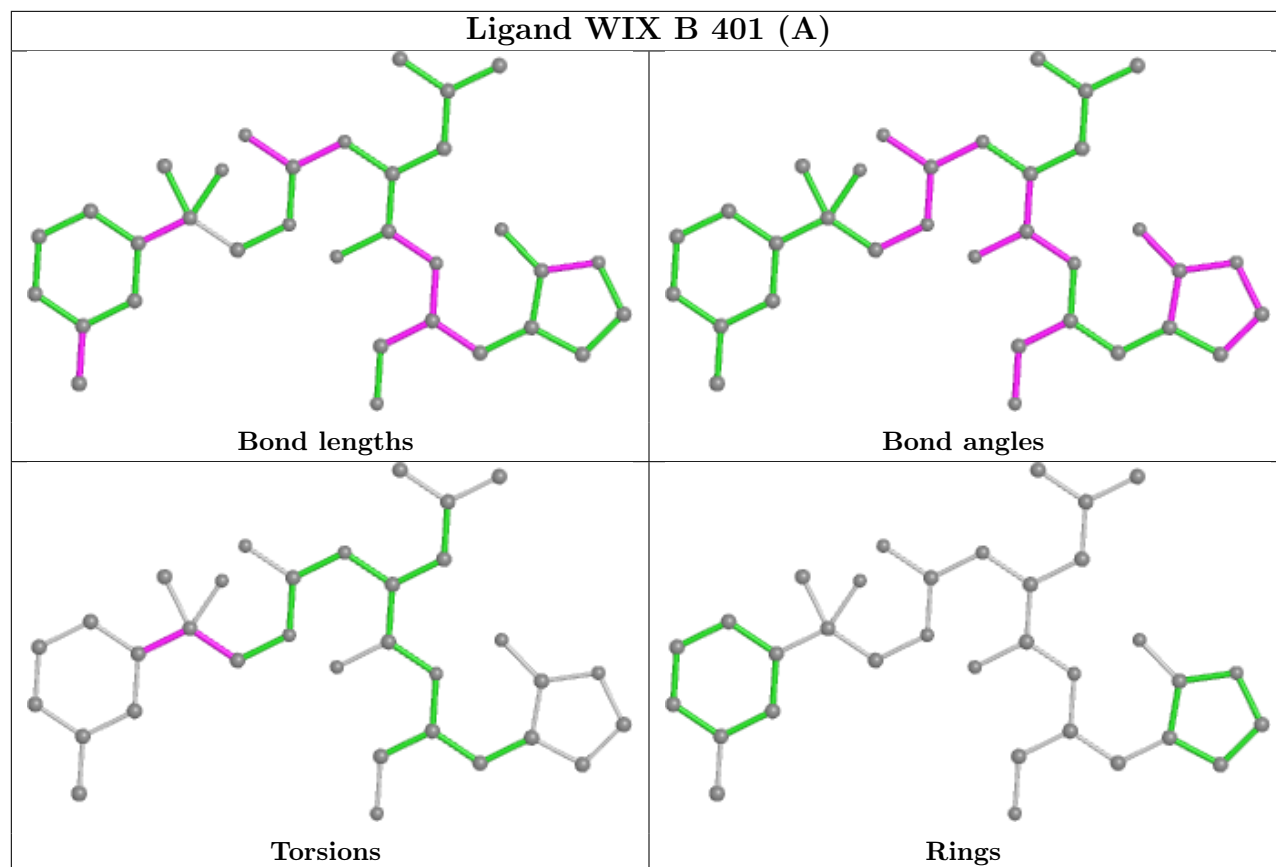


Ligand WJ0 B 402 (B)



Ligand WIX A 402 (A)





5.7 Other polymers [i](#)

There are no such residues in this entry.

5.8 Polymer linkage issues [i](#)

There are no chain breaks in this entry.

6 Fit of model and data [i](#)

6.1 Protein, DNA and RNA chains [i](#)

In the following table, the column labelled ‘#RSRZ> 2’ contains the number (and percentage) of RSRZ outliers, followed by percent RSRZ outliers for the chain as percentile scores relative to all X-ray entries and entries of similar resolution. The OWAB column contains the minimum, median, 95th percentile and maximum values of the occupancy-weighted average B-factor per residue. The column labelled ‘Q< 0.9’ lists the number of (and percentage) of residues with an average occupancy less than 0.9.

Mol	Chain	Analysed	<RSRZ>	#RSRZ>2	OWAB(Å ²)	Q<0.9
1	A	297/309 (96%)	-0.45	0 100 100	21, 38, 57, 82	0
1	B	296/309 (95%)	-0.30	3 (1%) 82 84	24, 41, 70, 87	0
All	All	593/618 (95%)	-0.38	3 (0%) 91 92	21, 39, 65, 87	0

All (3) RSRZ outliers are listed below:

Mol	Chain	Res	Type	RSRZ
1	B	169	THR	2.5
1	B	227	LEU	2.4
1	B	46	SER	2.4

6.2 Non-standard residues in protein, DNA, RNA chains [i](#)

There are no non-standard protein/DNA/RNA residues in this entry.

6.3 Carbohydrates [i](#)

There are no monosaccharides in this entry.

6.4 Ligands [i](#)

In the following table, the Atoms column lists the number of modelled atoms in the group and the number defined in the chemical component dictionary. The B-factors column lists the minimum, median, 95th percentile and maximum values of B factors of atoms in the group. The column labelled ‘Q< 0.9’ lists the number of atoms with occupancy less than 0.9.

Mol	Type	Chain	Res	Atoms	RSCC	RSR	B-factors(Å ²)	Q<0.9
3	WIX	B	401[A]	33/37	0.80	0.20	33,39,48,69	33
4	WJ0	B	402[B]	33/37	0.80	0.20	32,40,48,54	33

Continued on next page...

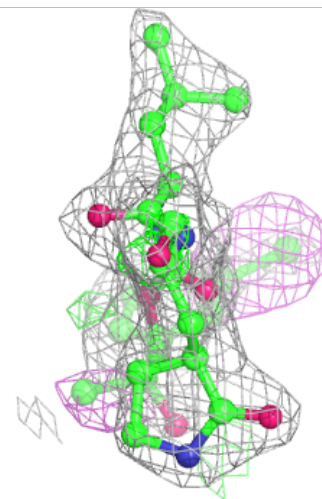
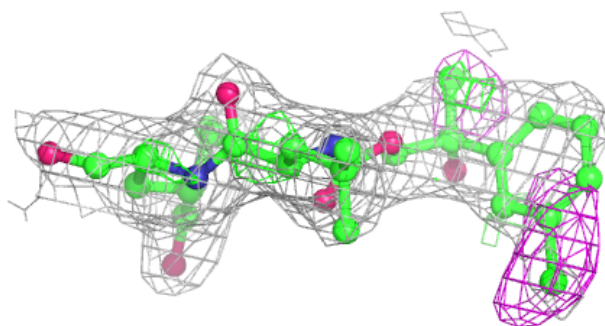
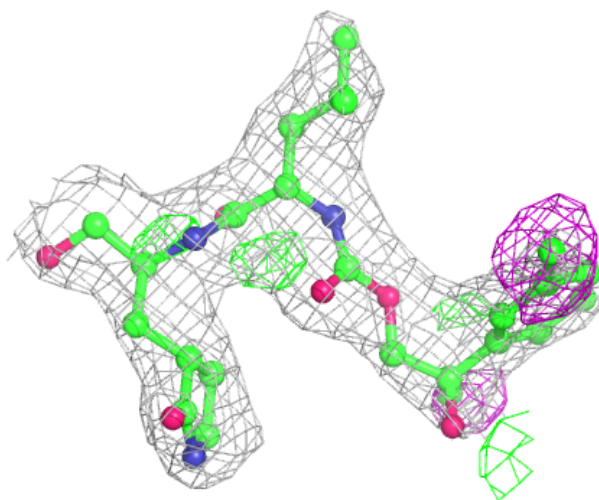
Continued from previous page...

Mol	Type	Chain	Res	Atoms	RSCC	RSR	B-factors(\AA^2)	Q<0.9
2	CL	A	401	1/1	0.91	0.20	48,48,48,48	0
3	WIX	A	402[A]	33/37	0.92	0.12	25,33,45,65	33
4	WJ0	A	403[B]	33/37	0.93	0.12	25,33,45,66	33

The following is a graphical depiction of the model fit to experimental electron density of all instances of the Ligand of Interest. In addition, ligands with molecular weight > 250 and outliers as shown on the geometry validation Tables will also be included. Each fit is shown from different orientation to approximate a three-dimensional view.

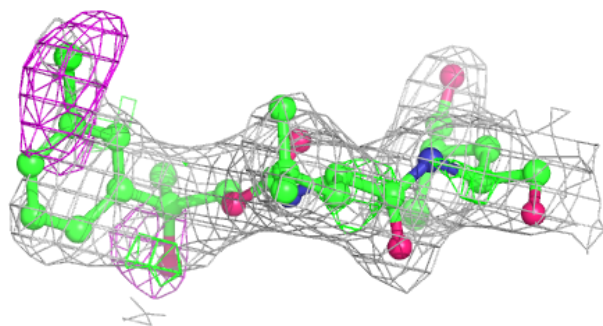
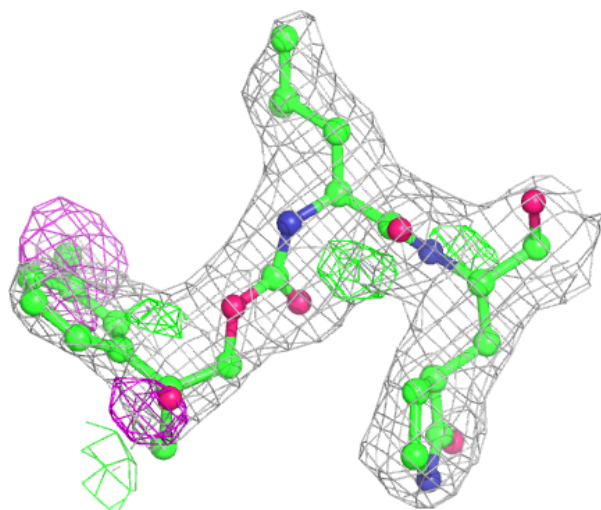
Electron density around WIX B 401 (A):

2mF_o-DF_c (at 0.7 rmsd) in gray
mF_o-DF_c (at 3 rmsd) in purple (negative)
and green (positive)



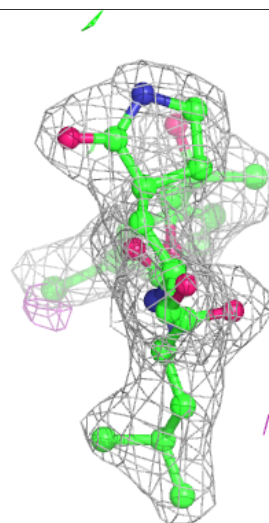
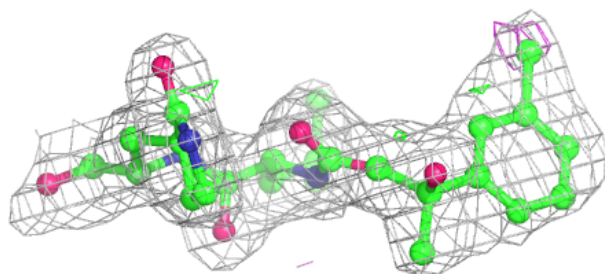
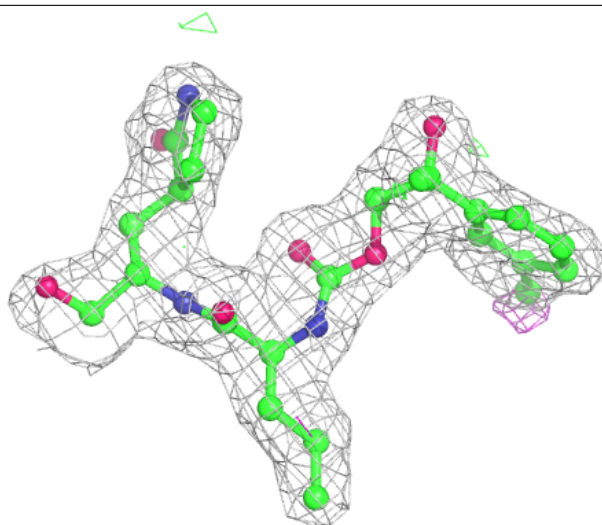
Electron density around WJ0 B 402 (B):

$2mF_o-DF_c$ (at 0.7 rmsd) in gray
 mF_o-DF_c (at 3 rmsd) in purple (negative)
and green (positive)



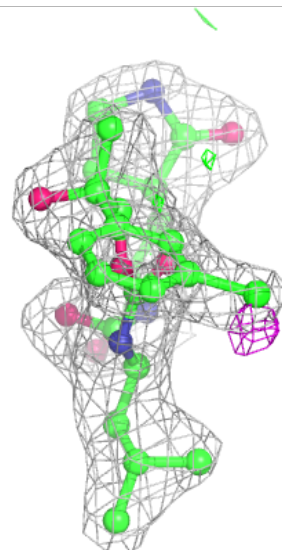
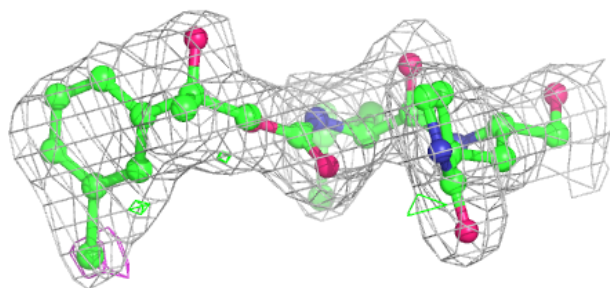
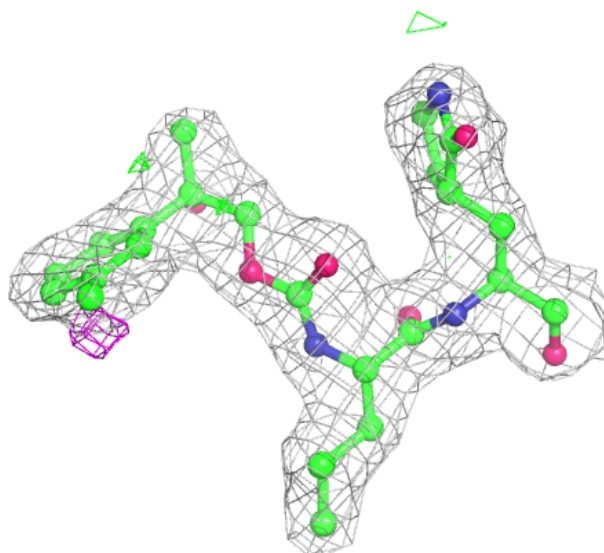
Electron density around WIX A 402 (A):

$2mF_o-DF_c$ (at 0.7 rmsd) in gray
 mF_o-DF_c (at 3 rmsd) in purple (negative)
and green (positive)



Electron density around WJ0 A 403 (B):

$2mF_o-DF_c$ (at 0.7 rmsd) in gray
 mF_o-DF_c (at 3 rmsd) in purple (negative)
and green (positive)



6.5 Other polymers [i](#)

There are no such residues in this entry.