



wwPDB X-ray Structure Validation Summary Report ⓘ

May 21, 2020 – 07:57 pm BST

PDB ID : 1E8F
Title : STRUCTURE OF THE H61T MUTANT OF THE FLAVOENZYME
VANILLYL-ALCOHOL OXIDASE IN THE APO FORM
Authors : Mattevi, A.; Fraaije, M.W.
Deposited on : 2000-09-20
Resolution : 2.90 Å(reported)

This is a wwPDB X-ray Structure Validation Summary Report for a publicly released PDB entry.

We welcome your comments at validation@mail.wwpdb.org

A user guide is available at

<https://www.wwpdb.org/validation/2017/XrayValidationReportHelp>

with specific help available everywhere you see the ⓘ symbol.

The following versions of software and data (see [references ⓘ](#)) were used in the production of this report:

MolProbity	:	4.02b-467
Xtriage (Phenix)	:	1.13
EDS	:	2.11
Percentile statistics	:	20191225.v01 (using entries in the PDB archive December 25th 2019)
Refmac	:	5.8.0158
CCP4	:	7.0.044 (Gargrove)
Ideal geometry (proteins)	:	Engh & Huber (2001)
Ideal geometry (DNA, RNA)	:	Parkinson et al. (1996)
Validation Pipeline (wwPDB-VP)	:	2.11

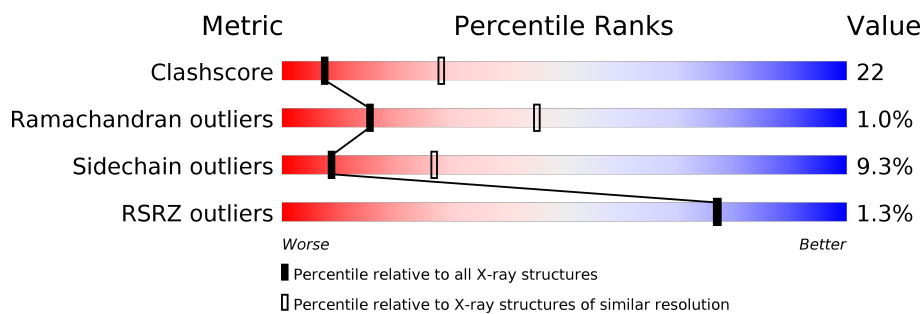
1 Overall quality at a glance

The following experimental techniques were used to determine the structure:

X-RAY DIFFRACTION

The reported resolution of this entry is 2.90 Å.

Percentile scores (ranging between 0-100) for global validation metrics of the entry are shown in the following graphic. The table shows the number of entries on which the scores are based.



Metric	Whole archive (#Entries)	Similar resolution (#Entries, resolution range(Å))
Clashscore	141614	2172 (2.90-2.90)
Ramachandran outliers	138981	2115 (2.90-2.90)
Sidechain outliers	138945	2117 (2.90-2.90)
RSRZ outliers	127900	1906 (2.90-2.90)

The table below summarises the geometric issues observed across the polymeric chains and their fit to the electron density. The red, orange, yellow and green segments on the lower bar indicate the fraction of residues that contain outliers for ≥ 3 , 2, 1 and 0 types of geometric quality criteria respectively. A grey segment represents the fraction of residues that are not modelled. The numeric value for each fraction is indicated below the corresponding segment, with a dot representing fractions $\leq 5\%$. The upper red bar (where present) indicates the fraction of residues that have poor fit to the electron density. The numeric value is given above the bar.

Mol	Chain	Length	Quality of chain
1	A	560	<div> <div>%</div> <div> <div></div> <div>46%</div> <div>41%</div> <div>8%</div> <div>...</div> </div> </div>
1	B	560	<div> <div>%</div> <div> <div></div> <div>49%</div> <div>40%</div> <div>8%</div> <div>...</div> </div> </div>

2 Entry composition

There are 2 unique types of molecules in this entry. The entry contains 8642 atoms, of which 0 are hydrogens and 0 are deuteriums.

In the tables below, the ZeroOcc column contains the number of atoms modelled with zero occupancy, the AltConf column contains the number of residues with at least one atom in alternate conformation and the Trace column contains the number of residues modelled with at most 2 atoms.

- Molecule 1 is a protein called VANILLYL-ALCOHOL OXIDASE.

Mol	Chain	Residues	Atoms					ZeroOcc	AltConf	Trace
1	A	545	Total	C	N	O	S	136	0	0
			4311	2768	737	782	24			
1	B	545	Total	C	N	O	S	136	0	0
			4311	2768	737	782	24			

There are 2 discrepancies between the modelled and reference sequences:

Chain	Residue	Modelled	Actual	Comment	Reference
A	61	THR	HIS	engineered mutation	UNP P56216
B	61	THR	HIS	engineered mutation	UNP P56216

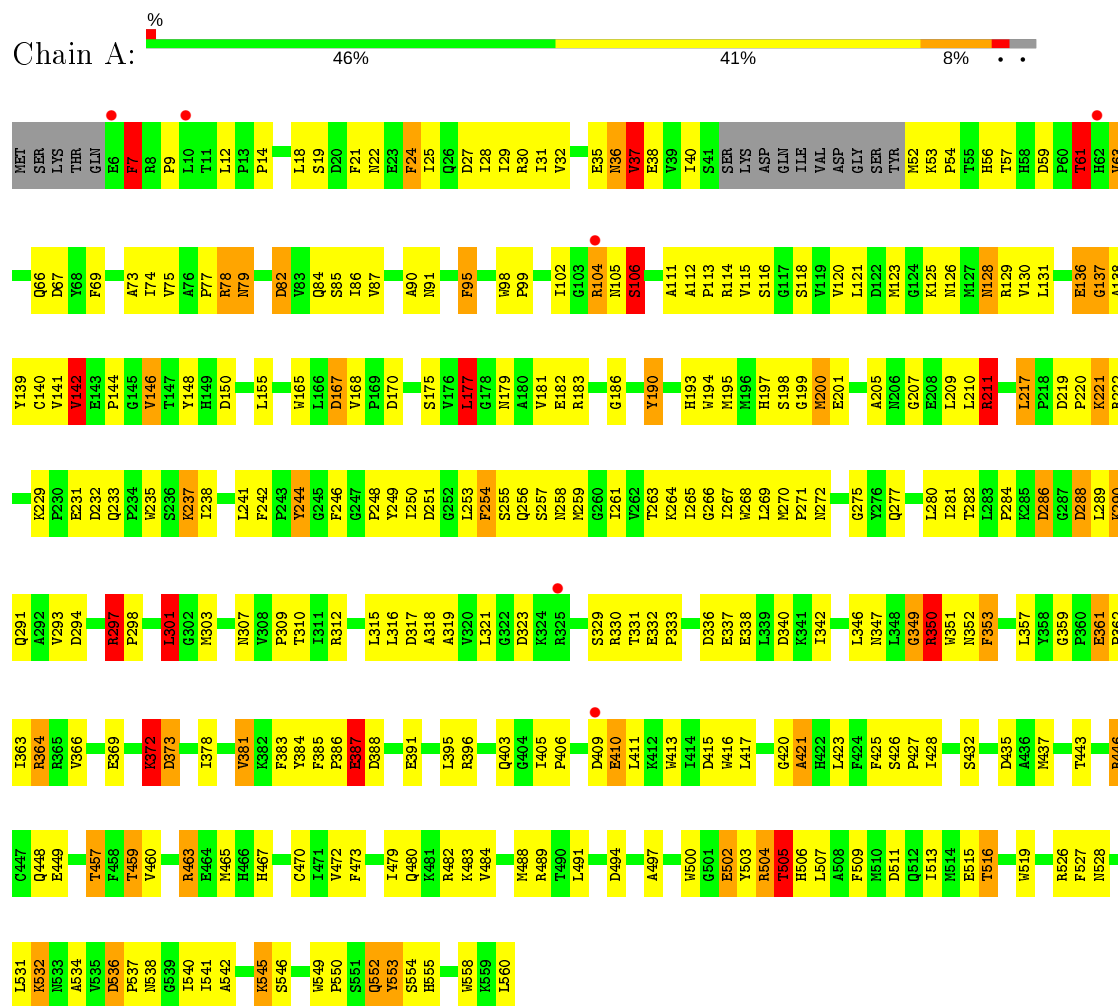
- Molecule 2 is water.

Mol	Chain	Residues	Atoms		ZeroOcc	AltConf
2	A	12	Total	O	0	0
			12	12		
2	B	8	Total	O	0	0
			8	8		

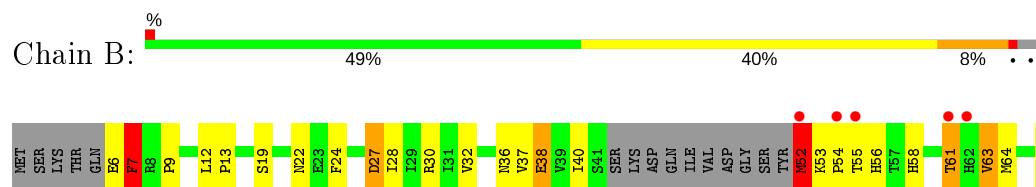
3 Residue-property plots

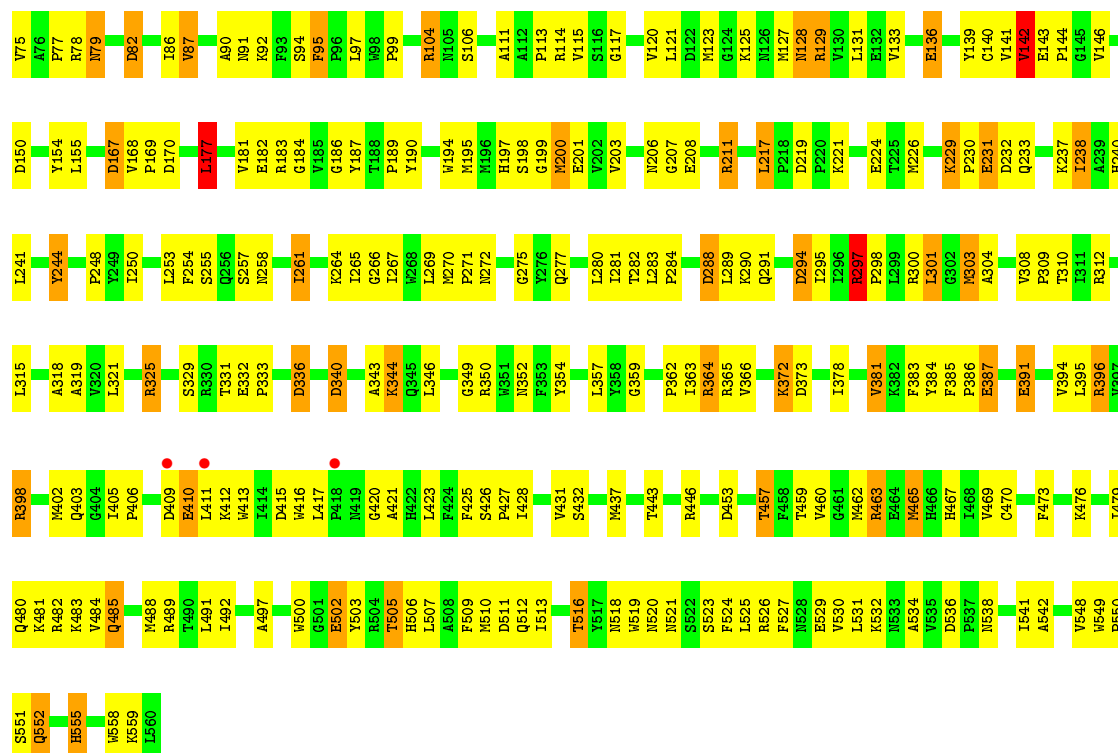
These plots are drawn for all protein, RNA and DNA chains in the entry. The first graphic for a chain summarises the proportions of the various outlier classes displayed in the second graphic. The second graphic shows the sequence view annotated by issues in geometry and electron density. Residues are color-coded according to the number of geometric quality criteria for which they contain at least one outlier: green = 0, yellow = 1, orange = 2 and red = 3 or more. A red dot above a residue indicates a poor fit to the electron density ($RSRZ > 2$). Stretches of 2 or more consecutive residues without any outlier are shown as a green connector. Residues present in the sample, but not in the model, are shown in grey.

• Molecule 1: VANILLYL-ALCOHOL OXIDASE



• Molecule 1: VANILLYL-ALCOHOL OXIDASE





4 Data and refinement statistics

Property	Value	Source
Space group	I 4	Depositor
Cell constants a, b, c, α , β , γ	129.28Å 129.28Å 130.40Å 90.00° 90.00° 90.00°	Depositor
Resolution (Å)	20.00 – 2.90 19.95 – 2.90	Depositor EDS
% Data completeness (in resolution range)	98.1 (20.00-2.90) 98.1 (19.95-2.90)	Depositor EDS
R_{merge}	0.14	Depositor
R_{sym}	0.14	Depositor
$\langle I/\sigma(I) \rangle$ ¹	2.36 (at 2.88Å)	Xtriage
Refinement program	REFMAC	Depositor
R, R_{free}	0.239 , 0.312 0.221 , (Not available)	Depositor DCC
R_{free} test set	No test flags present.	wwPDB-VP
Wilson B-factor (Å ²)	28.8	Xtriage
Anisotropy	0.109	Xtriage
Bulk solvent k_{sol} (e/Å ³), B_{sol} (Å ²)	0.28 , 24.4	EDS
L-test for twinning ²	$\langle L \rangle = 0.48$, $\langle L^2 \rangle = 0.30$	Xtriage
Estimated twinning fraction	0.000 for l,-k,h 0.005 for -l,-k,-h 0.015 for -h,-l,-k 0.000 for -h,l,k 0.039 for -h,k,-l	Xtriage
F_o, F_c correlation	0.89	EDS
Total number of atoms	8642	wwPDB-VP
Average B, all atoms (Å ²)	17.0	wwPDB-VP

Xtriage's analysis on translational NCS is as follows: *The largest off-origin peak in the Patterson function is 3.76% of the height of the origin peak. No significant pseudotranslation is detected.*

¹Intensities estimated from amplitudes.

²Theoretical values of $\langle |L| \rangle$, $\langle L^2 \rangle$ for acentric reflections are 0.5, 0.333 respectively for untwinned datasets, and 0.375, 0.2 for perfectly twinned datasets.

5 Model quality

5.1 Standard geometry

The Z score for a bond length (or angle) is the number of standard deviations the observed value is removed from the expected value. A bond length (or angle) with $|Z| > 5$ is considered an outlier worth inspection. RMSZ is the root-mean-square of all Z scores of the bond lengths (or angles).

Mol	Chain	Bond lengths		Bond angles	
		RMSZ	# $ Z > 5$	RMSZ	# $ Z > 5$
1	A	0.76	4/4428 (0.1%)	1.88	123/6018 (2.0%)
1	B	0.80	10/4428 (0.2%)	1.81	92/6018 (1.5%)
All	All	0.78	14/8856 (0.2%)	1.85	215/12036 (1.8%)

Chiral center outliers are detected by calculating the chiral volume of a chiral center and verifying if the center is modelled as a planar moiety or with the opposite hand. A planarity outlier is detected by checking planarity of atoms in a peptide group, atoms in a mainchain group or atoms of a sidechain that are expected to be planar.

Mol	Chain	#Chirality outliers	#Planarity outliers
1	A	0	1

The worst 5 of 14 bond length outliers are listed below:

Mol	Chain	Res	Type	Atoms	Z	Observed(Å)	Ideal(Å)
1	A	221	LYS	CG-CD	-24.75	0.68	1.52
1	B	53	LYS	CB-CG	18.00	2.01	1.52
1	B	52	MET	CA-CB	15.90	1.89	1.53
1	B	476	LYS	CG-CD	12.89	1.96	1.52
1	B	325	ARG	CB-CG	-9.83	1.26	1.52

The worst 5 of 215 bond angle outliers are listed below:

Mol	Chain	Res	Type	Atoms	Z	Observed(°)	Ideal(°)
1	A	190	TYR	CB-CG-CD1	21.52	133.91	121.00
1	B	463	ARG	NE-CZ-NH1	20.52	130.56	120.30
1	A	221	LYS	CG-CD-CE	-19.44	53.59	111.90
1	B	325	ARG	CB-CG-CD	19.04	161.11	111.60
1	B	53	LYS	CB-CA-C	18.17	146.73	110.40

There are no chirality outliers.

All (1) planarity outliers are listed below:

Mol	Chain	Res	Type	Group
1	A	37	VAL	Mainchain

5.2 Too-close contacts

In the following table, the Non-H and H(model) columns list the number of non-hydrogen atoms and hydrogen atoms in the chain respectively. The H(added) column lists the number of hydrogen atoms added and optimized by MolProbity. The Clashes column lists the number of clashes within the asymmetric unit, whereas Symm-Clashes lists symmetry related clashes.

Mol	Chain	Non-H	H(model)	H(added)	Clashes	Symm-Clashes
1	A	4311	0	4260	210	18
1	B	4311	0	4260	192	10
2	A	12	0	0	2	0
2	B	8	0	0	1	0
All	All	8642	0	8520	364	18

The all-atom clashscore is defined as the number of clashes found per 1000 atoms (including hydrogen atoms). The all-atom clashscore for this structure is 22.

The worst 5 of 364 close contacts within the same asymmetric unit are listed below, sorted by their clash magnitude.

Atom-1	Atom-2	Interatomic distance (Å)	Clash overlap (Å)
1:B:63:VAL:HG11	1:B:423:LEU:HD11	1.44	1.00
1:B:310:THR:HG22	1:B:459:THR:HG22	1.45	0.96
1:A:357:LEU:HB3	1:A:364:ARG:HG2	1.55	0.89
1:A:310:THR:HG22	1:A:459:THR:HG22	1.55	0.88
1:B:79:ASN:ND2	1:B:82:ASP:H	1.74	0.86

The worst 5 of 18 symmetry-related close contacts are listed below. The label for Atom-2 includes the symmetry operator and encoded unit-cell translations to be applied.

Atom-1	Atom-2	Interatomic distance (Å)	Clash overlap (Å)
1:A:330:ARG:NH2	1:A:332:GLU:CB[2_765]	0.47	1.73
1:A:52:MET:SD	1:B:415:ASP:OD1[6_655]	0.77	1.43
1:A:18:LEU:CD2	1:A:30:ARG:NH1[3_655]	1.13	1.07
1:A:330:ARG:NH2	1:A:332:GLU:CA[2_765]	1.17	1.03
1:A:53:LYS:CA	1:B:412:LYS:NZ[6_655]	1.35	0.85

5.3 Torsion angles

5.3.1 Protein backbone

In the following table, the Percentiles column shows the percent Ramachandran outliers of the chain as a percentile score with respect to all X-ray entries followed by that with respect to entries of similar resolution.

The Analysed column shows the number of residues for which the backbone conformation was analysed, and the total number of residues.

Mol	Chain	Analysed	Favoured	Allowed	Outliers	Percentiles	
1	A	541/560 (97%)	494 (91%)	40 (7%)	7 (1%)	12	37
1	B	541/560 (97%)	490 (91%)	47 (9%)	4 (1%)	22	54
All	All	1082/1120 (97%)	984 (91%)	87 (8%)	11 (1%)	15	45

5 of 11 Ramachandran outliers are listed below:

Mol	Chain	Res	Type
1	B	7	PHE
1	A	7	PHE
1	A	67	ASP
1	B	410	GLU
1	A	410	GLU

5.3.2 Protein sidechains

In the following table, the Percentiles column shows the percent sidechain outliers of the chain as a percentile score with respect to all X-ray entries followed by that with respect to entries of similar resolution.

The Analysed column shows the number of residues for which the sidechain conformation was analysed, and the total number of residues.

Mol	Chain	Analysed	Rotameric	Outliers	Percentiles	
1	A	466/481 (97%)	422 (91%)	44 (9%)	8	26
1	B	466/481 (97%)	423 (91%)	43 (9%)	9	27
All	All	932/962 (97%)	845 (91%)	87 (9%)	9	27

5 of 87 residues with a non-rotameric sidechain are listed below:

Mol	Chain	Res	Type
1	A	505	THR

Continued on next page...

Continued from previous page...

Mol	Chain	Res	Type
1	B	79	ASN
1	B	503	TYR
1	A	516	THR
1	B	19	SER

Some sidechains can be flipped to improve hydrogen bonding and reduce clashes. 5 of 21 such sidechains are listed below:

Mol	Chain	Res	Type
1	A	552	GLN
1	B	79	ASN
1	B	467	HIS
1	A	520	ASN
1	B	520	ASN

5.3.3 RNA ⓘ

There are no RNA molecules in this entry.

5.4 Non-standard residues in protein, DNA, RNA chains ⓘ

There are no non-standard protein/DNA/RNA residues in this entry.

5.5 Carbohydrates ⓘ

There are no carbohydrates in this entry.

5.6 Ligand geometry ⓘ

There are no ligands in this entry.

5.7 Other polymers ⓘ

There are no such residues in this entry.

5.8 Polymer linkage issues ⓘ

There are no chain breaks in this entry.

6 Fit of model and data [i](#)

6.1 Protein, DNA and RNA chains [i](#)

In the following table, the column labelled ‘#RSRZ> 2’ contains the number (and percentage) of RSRZ outliers, followed by percent RSRZ outliers for the chain as percentile scores relative to all X-ray entries and entries of similar resolution. The OWAB column contains the minimum, median, 95th percentile and maximum values of the occupancy-weighted average B-factor per residue. The column labelled ‘Q< 0.9’ lists the number of (and percentage) of residues with an average occupancy less than 0.9.

Mol	Chain	Analysed	<RSRZ>	#RSRZ>2	OWAB(Å ²)	Q<0.9
1	A	545/560 (97%)	-0.32	6 (1%) 80 80	3, 14, 38, 49	30 (5%)
1	B	545/560 (97%)	-0.28	8 (1%) 73 73	3, 14, 38, 50	30 (5%)
All	All	1090/1120 (97%)	-0.30	14 (1%) 77 77	3, 14, 38, 50	60 (5%)

The worst 5 of 14 RSRZ outliers are listed below:

Mol	Chain	Res	Type	RSRZ
1	B	52	MET	4.1
1	A	409	ASP	3.8
1	B	55	THR	3.0
1	B	418	PRO	3.0
1	B	409	ASP	3.0

6.2 Non-standard residues in protein, DNA, RNA chains [i](#)

There are no non-standard protein/DNA/RNA residues in this entry.

6.3 Carbohydrates [i](#)

There are no carbohydrates in this entry.

6.4 Ligands [i](#)

There are no ligands in this entry.

6.5 Other polymers [i](#)

There are no such residues in this entry.