



Full wwPDB X-ray Structure Validation Report ⓘ

Aug 10, 2020 – 08:26 AM BST

PDB ID : 2E9L
Title : Crystal Structure of human Cytosolic Neutral beta-Glycosylceramidase (Klotho-related Prote:KLrP) complex with Glucose and fatty acids
Authors : Kakuta, Y.; Hayashi, Y.; Okino, N.; Ito, M.
Deposited on : 2007-01-25
Resolution : 1.60 Å(reported)

This is a Full wwPDB X-ray Structure Validation Report for a publicly released PDB entry.

We welcome your comments at validation@mail.wwpdb.org

A user guide is available at

<https://www.wwpdb.org/validation/2017/XrayValidationReportHelp>

with specific help available everywhere you see the ⓘ symbol.

The following versions of software and data (see [references ⓘ](#)) were used in the production of this report:

MolProbity : 4.02b-467
Mogul : 1.8.5 (274361), CSD as541be (2020)
Xtriage (Phenix) : 1.13
EDS : 2.13.1
buster-report : 1.1.7 (2018)
Percentile statistics : 20191225.v01 (using entries in the PDB archive December 25th 2019)
Refmac : 5.8.0158
CCP4 : 7.0.044 (Gargrove)
Ideal geometry (proteins) : Engh & Huber (2001)
Ideal geometry (DNA, RNA) : Parkinson et al. (1996)
Validation Pipeline (wwPDB-VP) : 2.13.1

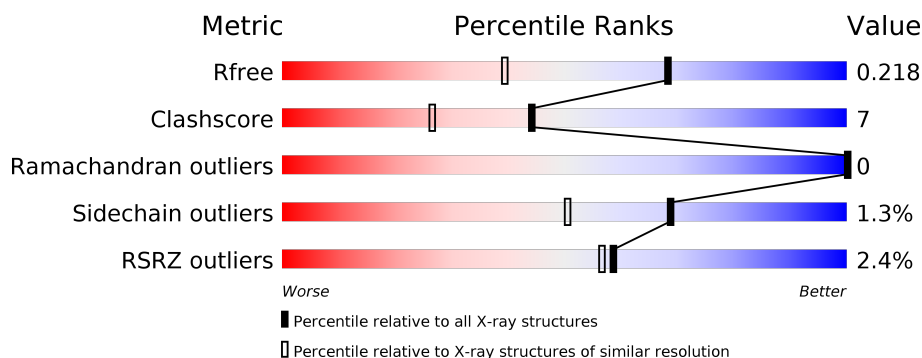
1 Overall quality at a glance

The following experimental techniques were used to determine the structure:

X-RAY DIFFRACTION

The reported resolution of this entry is 1.60 Å.

Percentile scores (ranging between 0-100) for global validation metrics of the entry are shown in the following graphic. The table shows the number of entries on which the scores are based.



Metric	Whole archive (#Entries)	Similar resolution (#Entries, resolution range(Å))
R_{free}	130704	3398 (1.60-1.60)
Clashscore	141614	3665 (1.60-1.60)
Ramachandran outliers	138981	3564 (1.60-1.60)
Sidechain outliers	138945	3563 (1.60-1.60)
RSRZ outliers	127900	3321 (1.60-1.60)

The table below summarises the geometric issues observed across the polymeric chains and their fit to the electron density. The red, orange, yellow and green segments on the lower bar indicate the fraction of residues that contain outliers for ≥ 3 , 2, 1 and 0 types of geometric quality criteria respectively. A grey segment represents the fraction of residues that are not modelled. The numeric value for each fraction is indicated below the corresponding segment, with a dot representing fractions $\leq 5\%$. The upper red bar (where present) indicates the fraction of residues that have poor fit to the electron density. The numeric value is given above the bar.

Mol	Chain	Length	Quality of chain
1	A	469	

The following table lists non-polymeric compounds, carbohydrate monomers and non-standard residues in protein, DNA, RNA chains that are outliers for geometric or electron-density-fit criteria:

Mol	Type	Chain	Res	Chirality	Geometry	Clashes	Electron density
5	GOL	A	3001	-	-	X	-
5	GOL	A	3101	-	-	X	-

Continued on next page...

Continued from previous page...

Mol	Type	Chain	Res	Chirality	Geometry	Clashes	Electron density
5	GOL	A	3201	-	-	-	X

2 Entry composition [i](#)

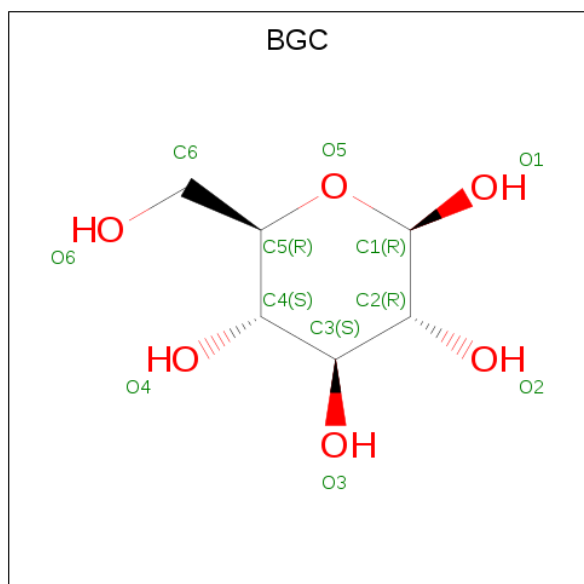
There are 6 unique types of molecules in this entry. The entry contains 4438 atoms, of which 0 are hydrogens and 0 are deuteriums.

In the tables below, the ZeroOcc column contains the number of atoms modelled with zero occupancy, the AltConf column contains the number of residues with at least one atom in alternate conformation and the Trace column contains the number of residues modelled with at most 2 atoms.

- Molecule 1 is a protein called Cytosolic beta-glucosidase.

Mol	Chain	Residues	Atoms					ZeroOcc	AltConf	Trace
			Total	C	N	O	S			
1	A	466	3884	2528	629	711	16	0	20	0

- Molecule 2 is beta-D-glucopyranose (three-letter code: BGC) (formula: C₆H₁₂O₆).



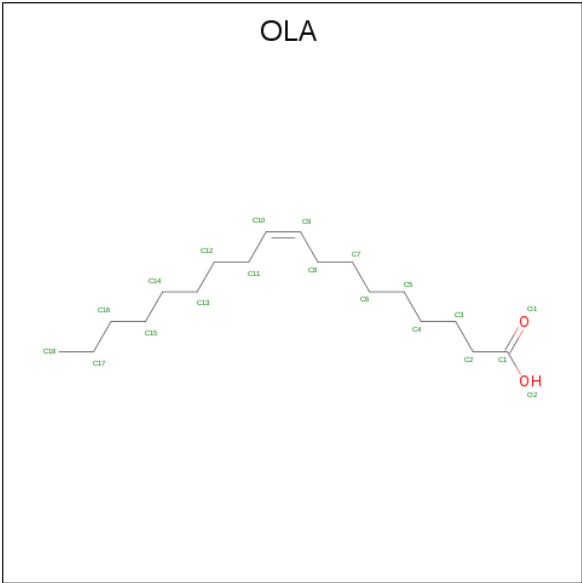
Mol	Chain	Residues	Atoms			ZeroOcc	AltConf
			Total	C	O		
2	A	1	12	6	6	0	0

- Molecule 3 is PALMITIC ACID (three-letter code: PLM) (formula: C₁₆H₃₂O₂).



Mol	Chain	Residues	Atoms			ZeroOcc	AltConf
3	A	1	Total	C	O	0	1
			36	32	4		
3	A	1	Total	C	O	0	0
			18	16	2		

- Molecule 4 is OLEIC ACID (three-letter code: OLA) (formula: C₁₈H₃₄O₂).



Mol	Chain	Residues	Atoms			ZeroOcc	AltConf
4	A	1	Total	C	O	0	0
			20	18	2		

- Molecule 5 is GLYCEROL (three-letter code: GOL) (formula: C₃H₈O₃).



Mol	Chain	Residues	Atoms			ZeroOcc	AltConf
5	A	1	Total	C	O	0	0
			6	3	3		
5	A	1	Total	C	O	0	0
			6	3	3		
5	A	1	Total	C	O	0	0
			6	3	3		

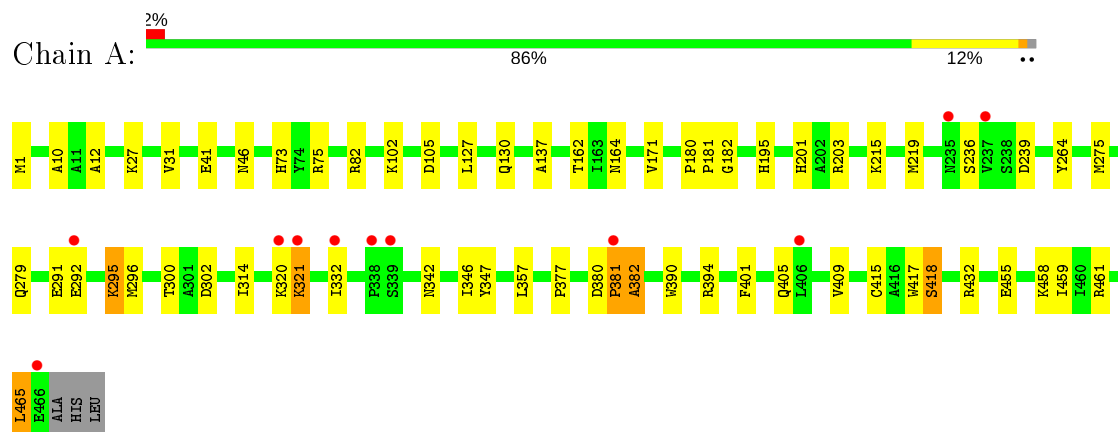
- Molecule 6 is water.

Mol	Chain	Residues	Atoms		ZeroOcc	AltConf
6	A	450	Total	O	0	0
			450	450		

3 Residue-property plots

These plots are drawn for all protein, RNA, DNA and oligosaccharide chains in the entry. The first graphic for a chain summarises the proportions of the various outlier classes displayed in the second graphic. The second graphic shows the sequence view annotated by issues in geometry and electron density. Residues are color-coded according to the number of geometric quality criteria for which they contain at least one outlier: green = 0, yellow = 1, orange = 2 and red = 3 or more. A red dot above a residue indicates a poor fit to the electron density ($RSRZ > 2$). Stretches of 2 or more consecutive residues without any outlier are shown as a green connector. Residues present in the sample, but not in the model, are shown in grey.

- Molecule 1: Cytosolic beta-glucosidase



4 Data and refinement statistics

Property	Value	Source
Space group	P 21 21 21	Depositor
Cell constants a, b, c, α , β , γ	66.03Å 83.98Å 94.88Å 90.00° 90.00° 90.00°	Depositor
Resolution (Å)	21.29 – 1.60 21.29 – 1.60	Depositor EDS
% Data completeness (in resolution range)	88.9 (21.29-1.60) 88.9 (21.29-1.60)	Depositor EDS
R_{merge}	0.13	Depositor
R_{sym}	0.13	Depositor
$\langle I/\sigma(I) \rangle$ ¹	4.80 (at 1.60Å)	Xtriage
Refinement program	REFMAC 5.2.0019	Depositor
R, R_{free}	0.188 , 0.221 0.184 , 0.218	Depositor DCC
R_{free} test set	3201 reflections (5.12%)	wwPDB-VP
Wilson B-factor (Å ²)	16.8	Xtriage
Anisotropy	0.059	Xtriage
Bulk solvent k_{sol} (e/Å ³), B_{sol} (Å ²)	0.39 , 50.5	EDS
L-test for twinning ²	$\langle L \rangle = 0.50$, $\langle L^2 \rangle = 0.34$	Xtriage
Estimated twinning fraction	No twinning to report.	Xtriage
F_o, F_c correlation	0.96	EDS
Total number of atoms	4438	wwPDB-VP
Average B, all atoms (Å ²)	17.0	wwPDB-VP

Xtriage's analysis on translational NCS is as follows: *The largest off-origin peak in the Patterson function is 5.90% of the height of the origin peak. No significant pseudotranslation is detected.*

¹Intensities estimated from amplitudes.

²Theoretical values of $\langle |L| \rangle$, $\langle L^2 \rangle$ for acentric reflections are 0.5, 0.333 respectively for untwinned datasets, and 0.375, 0.2 for perfectly twinned datasets.

5 Model quality

5.1 Standard geometry

Bond lengths and bond angles in the following residue types are not validated in this section: GOL, PLM, BGC, OLA

The Z score for a bond length (or angle) is the number of standard deviations the observed value is removed from the expected value. A bond length (or angle) with $|Z| > 5$ is considered an outlier worth inspection. RMSZ is the root-mean-square of all Z scores of the bond lengths (or angles).

Mol	Chain	Bond lengths		Bond angles	
		RMSZ	$\# Z > 5$	RMSZ	$\# Z > 5$
1	A	0.42	0/4061	0.59	2/5509 (0.0%)

Chiral center outliers are detected by calculating the chiral volume of a chiral center and verifying if the center is modelled as a planar moiety or with the opposite hand. A planarity outlier is detected by checking planarity of atoms in a peptide group, atoms in a mainchain group or atoms of a sidechain that are expected to be planar.

Mol	Chain	#Chirality outliers	#Planarity outliers
1	A	0	3

There are no bond length outliers.

All (2) bond angle outliers are listed below:

Mol	Chain	Res	Type	Atoms	Z	Observed($^{\circ}$)	Ideal($^{\circ}$)
1	A	182	GLY	N-CA-C	-8.25	92.47	113.10
1	A	382	ALA	N-CA-C	-8.11	89.11	111.00

There are no chirality outliers.

All (3) planarity outliers are listed below:

Mol	Chain	Res	Type	Group
1	A	181	PRO	Peptide
1	A	381	PRO	Peptide
1	A	418	SER	Peptide

5.2 Too-close contacts

In the following table, the Non-H and H(model) columns list the number of non-hydrogen atoms and hydrogen atoms in the chain respectively. The H(added) column lists the number of hydrogen

atoms added and optimized by MolProbity. The Clashes column lists the number of clashes within the asymmetric unit, whereas Symm-Clashes lists symmetry related clashes.

Mol	Chain	Non-H	H(model)	H(added)	Clashes	Symm-Clashes
1	A	3884	0	3792	52	0
2	A	12	0	12	0	0
3	A	54	0	93	1	0
4	A	20	0	33	0	0
5	A	18	0	24	8	0
6	A	450	0	0	4	0
All	All	4438	0	3954	52	0

The all-atom clashscore is defined as the number of clashes found per 1000 atoms (including hydrogen atoms). The all-atom clashscore for this structure is 7.

All (52) close contacts within the same asymmetric unit are listed below, sorted by their clash magnitude.

Atom-1	Atom-2	Interatomic distance (Å)	Clash overlap (Å)
1:A:394[B]:ARG:HG2	1:A:394[B]:ARG:HH11	1.27	0.97
1:A:137:ALA:HB3	5:A:3101:GOL:H12	1.53	0.89
1:A:203:ARG:HG2	1:A:296[A]:MET:HE3	1.69	0.72
1:A:41:GLU:H	1:A:46:ASN:HD21	1.35	0.72
1:A:105:ASP:HB2	5:A:3001:GOL:H11	1.76	0.68
1:A:162:THR:OG1	1:A:201:HIS:HD2	1.79	0.66
1:A:201:HIS:HE1	1:A:300:THR:O	1.80	0.65
1:A:458[A]:LYS:HG2	1:A:461:ARG:HH22	1.64	0.63
1:A:295:LYS:N	1:A:295:LYS:HD3	2.11	0.63
1:A:346:ILE:HD13	1:A:377:PRO:HG3	1.81	0.62
1:A:130:GLN:O	5:A:3101:GOL:H11	1.99	0.62
1:A:394[B]:ARG:CG	1:A:394[B]:ARG:HH11	2.09	0.61
1:A:75:ARG:HH22	1:A:164:ASN:HD22	1.51	0.58
1:A:195:HIS:HD2	1:A:264:TYR:OH	1.87	0.58
1:A:12:ALA:HB2	1:A:415[B]:CYS:SG	2.45	0.57
1:A:459:ILE:HD12	1:A:465:LEU:HD23	1.86	0.56
1:A:394[B]:ARG:NH1	1:A:394[B]:ARG:HG2	2.07	0.56
1:A:195:HIS:HE1	6:A:3425:HOH:O	1.88	0.55
1:A:401:PHE:CZ	1:A:405:GLN:HG3	2.42	0.55
1:A:27:LYS:HG3	1:A:82:ARG:HA	1.88	0.55
1:A:127:LEU:O	5:A:3101:GOL:O2	2.24	0.53
1:A:75:ARG:HH22	1:A:164:ASN:ND2	2.07	0.52
1:A:127:LEU:HD22	5:A:3101:GOL:H31	1.92	0.51
1:A:41:GLU:H	1:A:46:ASN:ND2	2.08	0.50
1:A:342:ASN:HB3	1:A:347:TYR:CD1	2.47	0.49

Continued on next page...

Continued from previous page...

Atom-1	Atom-2	Interatomic distance (Å)	Clash overlap (Å)
1:A:105:ASP:CB	5:A:3001:GOL:H11	2.42	0.48
1:A:219:MET:HB2	1:A:302:ASP:HB2	1.96	0.47
1:A:394[A]:ARG:NH1	6:A:3630:HOH:O	2.47	0.47
1:A:201:HIS:CE1	1:A:300:THR:O	2.63	0.47
1:A:171:VAL:HG21	3:A:1001[A]:PLM:HB1	1.97	0.46
1:A:10:ALA:HB2	1:A:73:HIS:HB2	1.98	0.46
1:A:314:ILE:HD12	1:A:332[B]:ILE:HD13	1.96	0.46
1:A:203:ARG:CG	1:A:296[A]:MET:HE3	2.41	0.46
1:A:458[A]:LYS:HG2	1:A:461:ARG:NH2	2.31	0.45
1:A:291:GLU:O	1:A:295:LYS:HE3	2.16	0.45
1:A:102:LYS:HD3	5:A:3001:GOL:H12	1.99	0.45
1:A:219:MET:HB2	1:A:302:ASP:CB	2.47	0.45
1:A:296[B]:MET:HG2	6:A:3641:HOH:O	2.18	0.44
1:A:236:SER:HB3	1:A:239:ASP:HB2	2.00	0.43
1:A:357:LEU:HB3	1:A:409:VAL:HG11	1.99	0.43
1:A:380:ASP:HA	1:A:381:PRO:HA	1.71	0.42
1:A:203:ARG:HA	1:A:296[A]:MET:CE	2.50	0.42
1:A:382:ALA:HB2	1:A:432:ARG:HD2	2.02	0.41
1:A:417:TRP:HA	1:A:418:SER:HA	1.91	0.41
1:A:162:THR:OG1	1:A:201:HIS:CD2	2.68	0.41
1:A:394[A]:ARG:NH1	6:A:3629:HOH:O	2.54	0.41
1:A:320:LYS:HB2	1:A:321:LYS:HE3	2.03	0.41
1:A:1:MET:SD	1:A:465:LEU:HD12	2.60	0.41
1:A:102:LYS:HA	5:A:3001:GOL:H12	2.03	0.41
1:A:275[B]:MET:HG3	1:A:279:GLN:NE2	2.37	0.40
1:A:31:VAL:HB	1:A:180:PRO:HB2	2.03	0.40
1:A:390:TRP:CE2	1:A:455:GLU:HB3	2.57	0.40

There are no symmetry-related clashes.

5.3 Torsion angles

5.3.1 Protein backbone

In the following table, the Percentiles column shows the percent Ramachandran outliers of the chain as a percentile score with respect to all X-ray entries followed by that with respect to entries of similar resolution.

The Analysed column shows the number of residues for which the backbone conformation was analysed, and the total number of residues.

Mol	Chain	Analysed	Favoured	Allowed	Outliers	Percentiles	
1	A	484/469 (103%)	468 (97%)	16 (3%)	0	100	100

There are no Ramachandran outliers to report.

5.3.2 Protein sidechains ⓘ

In the following table, the Percentiles column shows the percent sidechain outliers of the chain as a percentile score with respect to all X-ray entries followed by that with respect to entries of similar resolution.

The Analysed column shows the number of residues for which the sidechain conformation was analysed, and the total number of residues.

Mol	Chain	Analysed	Rotameric	Outliers	Percentiles	
1	A	419/402 (104%)	413 (99%)	6 (1%)	67	47

All (6) residues with a non-rotameric sidechain are listed below:

Mol	Chain	Res	Type
1	A	215[A]	LYS
1	A	215[B]	LYS
1	A	292	GLU
1	A	295	LYS
1	A	321	LYS
1	A	465	LEU

Some sidechains can be flipped to improve hydrogen bonding and reduce clashes. All (7) such sidechains are listed below:

Mol	Chain	Res	Type
1	A	17	GLN
1	A	46	ASN
1	A	164	ASN
1	A	195	HIS
1	A	201	HIS
1	A	307	GLN
1	A	388	GLN

5.3.3 RNA ⓘ

There are no RNA molecules in this entry.

5.4 Non-standard residues in protein, DNA, RNA chains ⓘ

There are no non-standard protein/DNA/RNA residues in this entry.

5.5 Carbohydrates ⓘ

There are no monosaccharides in this entry.

5.6 Ligand geometry ⓘ

8 ligands are modelled in this entry.

In the following table, the Counts columns list the number of bonds (or angles) for which Mogul statistics could be retrieved, the number of bonds (or angles) that are observed in the model and the number of bonds (or angles) that are defined in the Chemical Component Dictionary. The Link column lists molecule types, if any, to which the group is linked. The Z score for a bond length (or angle) is the number of standard deviations the observed value is removed from the expected value. A bond length (or angle) with $|Z| > 2$ is considered an outlier worth inspection. RMSZ is the root-mean-square of all Z scores of the bond lengths (or angles).

Mol	Type	Chain	Res	Link	Bond lengths			Bond angles		
					Counts	RMSZ	# $ Z > 2$	Counts	RMSZ	# $ Z > 2$
3	PLM	A	1001[A]	-	14,17,17	0.51	0	13,17,17	0.57	0
3	PLM	A	1101	-	14,17,17	0.26	0	13,17,17	0.56	0
3	PLM	A	1001[B]	-	14,17,17	0.36	0	13,17,17	0.73	0
5	GOL	A	3001	-	5,5,5	0.37	0	5,5,5	0.26	0
5	GOL	A	3201	-	5,5,5	0.35	0	5,5,5	0.24	0
4	OLA	A	2001	-	16,19,19	0.85	1 (6%)	15,19,19	0.74	0
2	BGC	A	1401	-	12,12,12	0.58	0	17,17,17	1.60	4 (23%)
5	GOL	A	3101	-	5,5,5	0.46	0	5,5,5	0.21	0

In the following table, the Chirals column lists the number of chiral outliers, the number of chiral centers analysed, the number of these observed in the model and the number defined in the Chemical Component Dictionary. Similar counts are reported in the Torsion and Rings columns. '-' means no outliers of that kind were identified.

Mol	Type	Chain	Res	Link	Chirals	Torsions	Rings
3	PLM	A	1001[A]	-	-	5/13/15/15	-
3	PLM	A	1101	-	-	7/13/15/15	-
3	PLM	A	1001[B]	-	-	7/13/15/15	-
5	GOL	A	3001	-	-	4/4/4/4	-
5	GOL	A	3201	-	-	2/4/4/4	-

Continued on next page...

Continued from previous page...

Mol	Type	Chain	Res	Link	Chirals	Torsions	Rings
4	OLA	A	2001	-	-	6/15/17/17	-
2	BGC	A	1401	-	-	0/2/22/22	0/1/1/1
5	GOL	A	3101	-	-	2/4/4/4	-

All (1) bond length outliers are listed below:

Mol	Chain	Res	Type	Atoms	Z	Observed(Å)	Ideal(Å)
4	A	2001	OLA	C10-C9	3.01	1.49	1.31

All (4) bond angle outliers are listed below:

Mol	Chain	Res	Type	Atoms	Z	Observed(°)	Ideal(°)
2	A	1401	BGC	C1-O5-C5	3.78	120.79	113.66
2	A	1401	BGC	O5-C1-C2	3.49	116.51	110.28
2	A	1401	BGC	C3-C4-C5	-2.47	105.83	110.24
2	A	1401	BGC	C1-C2-C3	2.13	114.73	110.31

There are no chirality outliers.

All (33) torsion outliers are listed below:

Mol	Chain	Res	Type	Atoms
3	A	1001[A]	PLM	C1-C2-C3-C4
3	A	1101	PLM	C1-C2-C3-C4
3	A	1001[B]	PLM	C1-C2-C3-C4
5	A	3001	GOL	C1-C2-C3-O3
5	A	3201	GOL	C1-C2-C3-O3
5	A	3201	GOL	O2-C2-C3-O3
5	A	3001	GOL	O2-C2-C3-O3
3	A	1001[A]	PLM	CC-CD-CE-CF
5	A	3001	GOL	O1-C1-C2-C3
3	A	1001[B]	PLM	C4-C5-C6-C7
3	A	1001[B]	PLM	CC-CD-CE-CF
3	A	1001[B]	PLM	C5-C6-C7-C8
3	A	1001[B]	PLM	CB-CC-CD-CE
3	A	1101	PLM	CC-CD-CE-CF
3	A	1101	PLM	CA-CB-CC-CD
3	A	1101	PLM	C7-C8-C9-CA
4	A	2001	OLA	C11-C12-C13-C14
3	A	1001[A]	PLM	C6-C7-C8-C9
3	A	1101	PLM	C2-C3-C4-C5
4	A	2001	OLA	C6-C7-C8-C9

Continued on next page...

Continued from previous page...

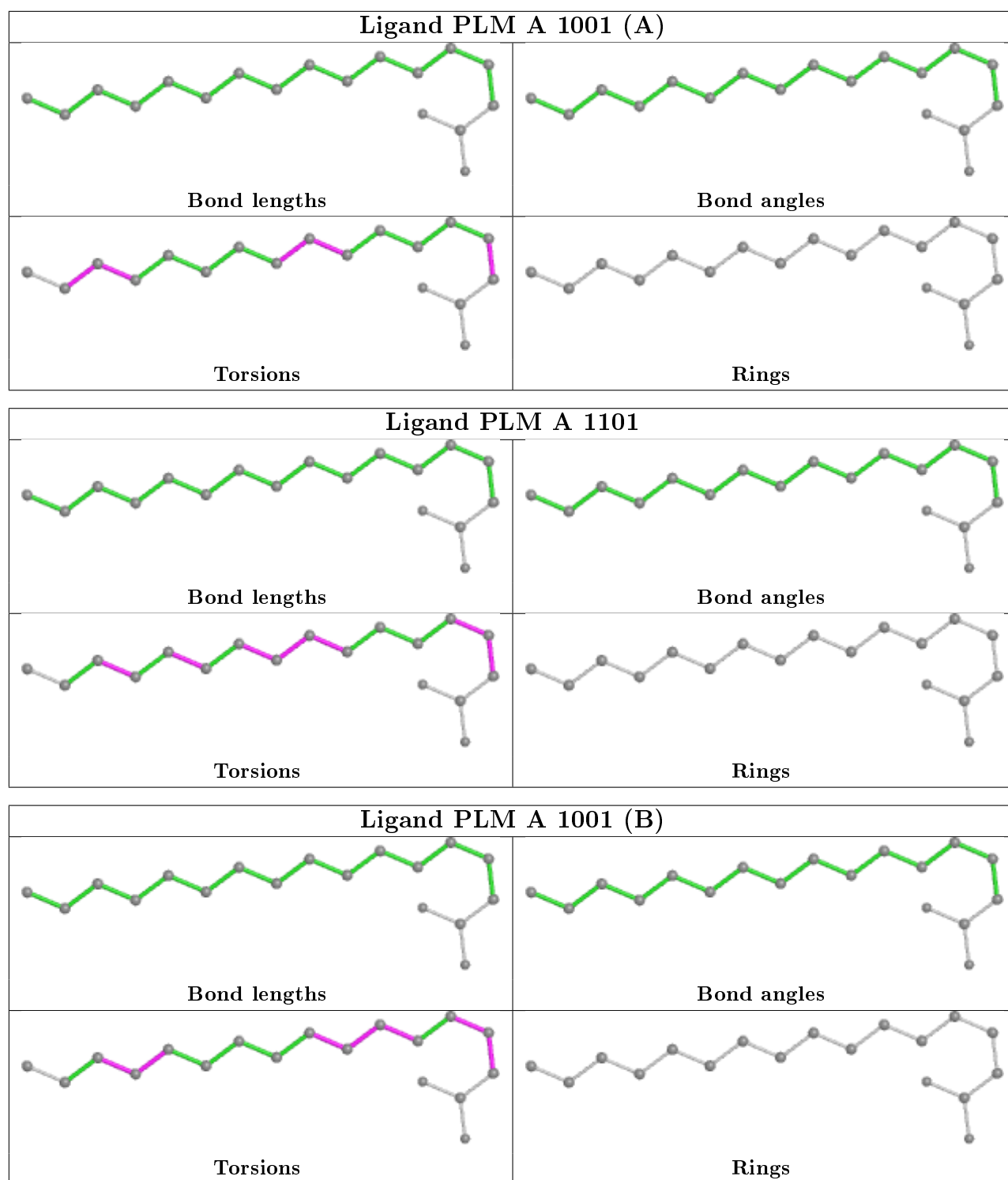
Mol	Chain	Res	Type	Atoms
3	A	1001[B]	PLM	C2-C3-C4-C5
3	A	1101	PLM	C6-C7-C8-C9
4	A	2001	OLA	C11-C10-C9-C8
3	A	1001[A]	PLM	CD-CE-CF-CG
3	A	1101	PLM	C8-C9-CA-CB
3	A	1001[B]	PLM	C6-C7-C8-C9
4	A	2001	OLA	C12-C13-C14-C15
4	A	2001	OLA	C9-C10-C11-C12
5	A	3101	GOL	C1-C2-C3-O3
3	A	1001[A]	PLM	C7-C8-C9-CA
4	A	2001	OLA	C2-C3-C4-C5
5	A	3001	GOL	O1-C1-C2-O2
5	A	3101	GOL	O2-C2-C3-O3

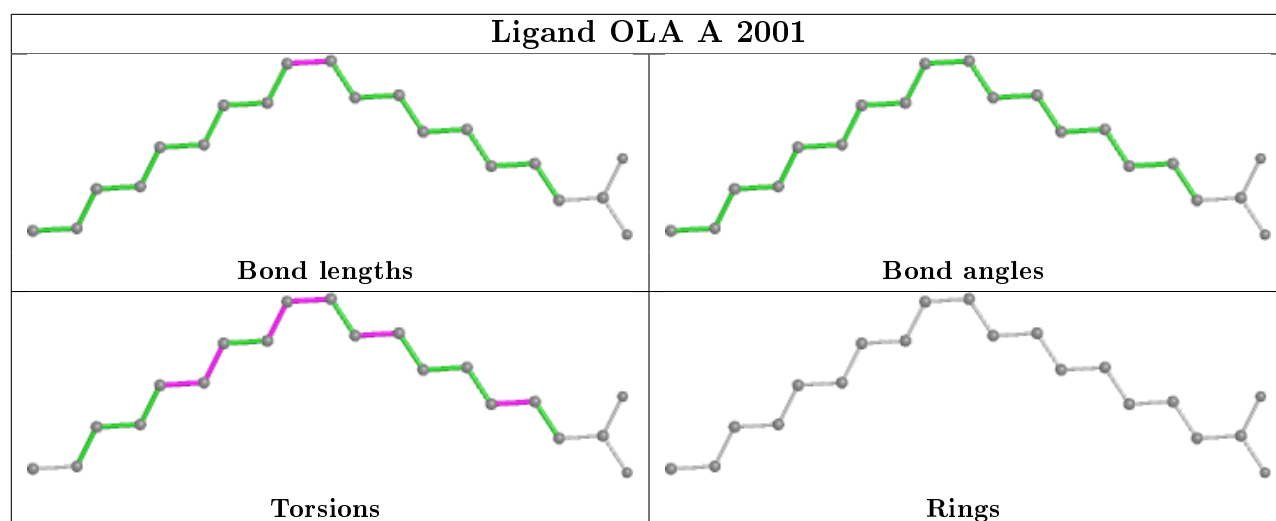
There are no ring outliers.

3 monomers are involved in 9 short contacts:

Mol	Chain	Res	Type	Clashes	Symm-Clashes
3	A	1001[A]	PLM	1	0
5	A	3001	GOL	4	0
5	A	3101	GOL	4	0

The following is a two-dimensional graphical depiction of Mogul quality analysis of bond lengths, bond angles, torsion angles, and ring geometry for all instances of the Ligand of Interest. In addition, ligands with molecular weight > 250 and outliers as shown on the validation Tables will also be included. For torsion angles, if less than 5% of the Mogul distribution of torsion angles is within 10 degrees of the torsion angle in question, then that torsion angle is considered an outlier. Any bond that is central to one or more torsion angles identified as an outlier by Mogul will be highlighted in the graph. For rings, the root-mean-square deviation (RMSD) between the ring in question and similar rings identified by Mogul is calculated over all ring torsion angles. If the average RMSD is greater than 60 degrees and the minimal RMSD between the ring in question and any Mogul-identified rings is also greater than 60 degrees, then that ring is considered an outlier. The outliers are highlighted in purple. The color gray indicates Mogul did not find sufficient equivalents in the CSD to analyse the geometry.





5.7 Other polymers [i](#)

There are no such residues in this entry.

5.8 Polymer linkage issues [i](#)

There are no chain breaks in this entry.

6 Fit of model and data [i](#)

6.1 Protein, DNA and RNA chains [i](#)

In the following table, the column labelled ‘#RSRZ> 2’ contains the number (and percentage) of RSRZ outliers, followed by percent RSRZ outliers for the chain as percentile scores relative to all X-ray entries and entries of similar resolution. The OWAB column contains the minimum, median, 95th percentile and maximum values of the occupancy-weighted average B-factor per residue. The column labelled ‘Q< 0.9’ lists the number of (and percentage) of residues with an average occupancy less than 0.9.

Mol	Chain	Analysed	<RSRZ>	#RSRZ>2	OWAB(Å ²)	Q<0.9
1	A	466/469 (99%)	-0.09	11 (2%) 59 56	9, 15, 25, 30	0

All (11) RSRZ outliers are listed below:

Mol	Chain	Res	Type	RSRZ
1	A	381	PRO	3.8
1	A	235	ASN	3.8
1	A	406	LEU	3.7
1	A	338	PRO	2.8
1	A	320	LYS	2.6
1	A	321	LYS	2.6
1	A	292	GLU	2.4
1	A	339	SER	2.3
1	A	332[A]	ILE	2.2
1	A	466	GLU	2.1
1	A	237	VAL	2.1

6.2 Non-standard residues in protein, DNA, RNA chains [i](#)

There are no non-standard protein/DNA/RNA residues in this entry.

6.3 Carbohydrates [i](#)

There are no monosaccharides in this entry.

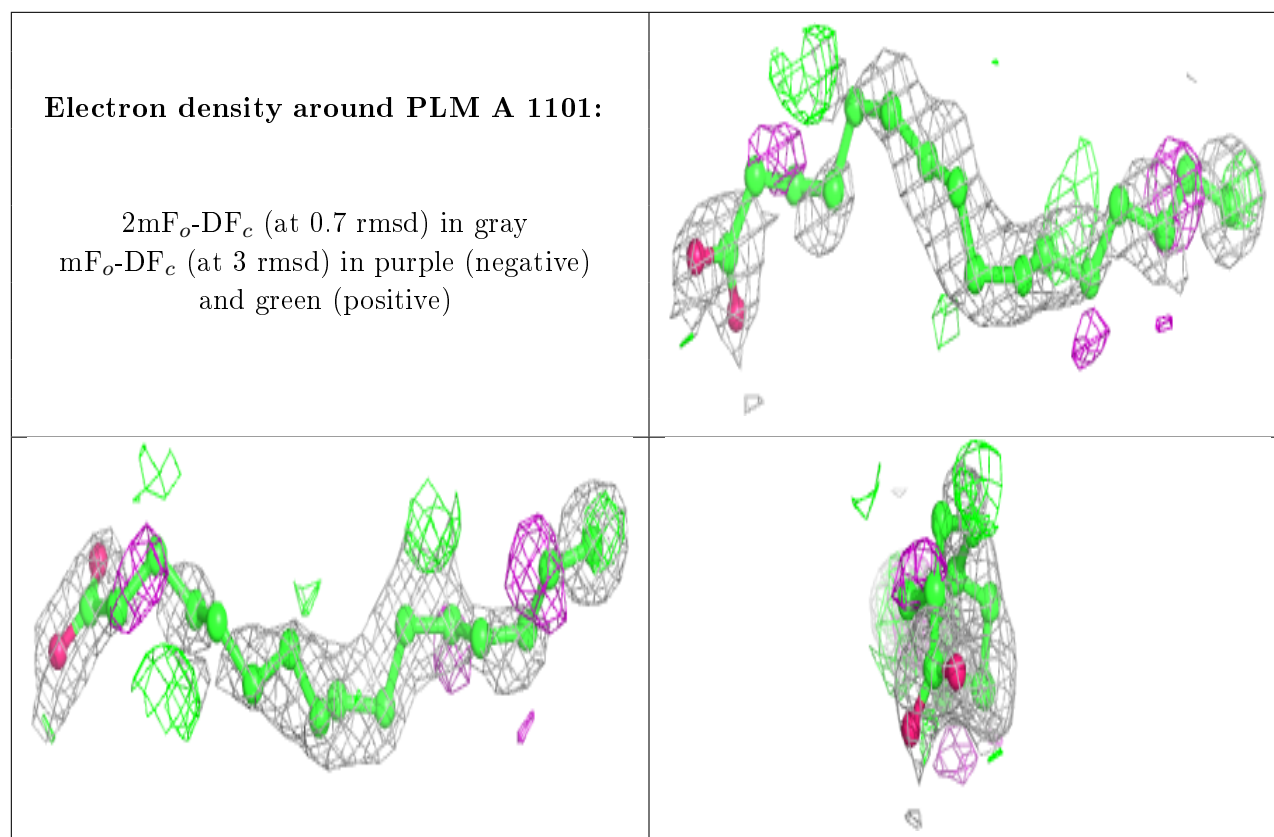
6.4 Ligands [i](#)

In the following table, the Atoms column lists the number of modelled atoms in the group and the number defined in the chemical component dictionary. The B-factors column lists the minimum,

median, 95th percentile and maximum values of B factors of atoms in the group. The column labelled 'Q< 0.9' lists the number of atoms with occupancy less than 0.9.

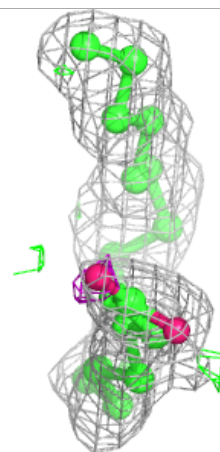
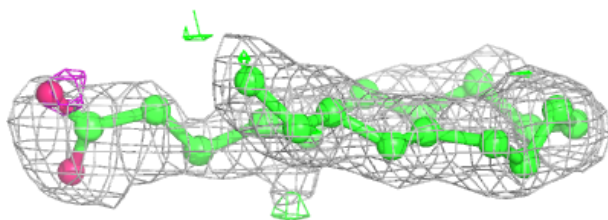
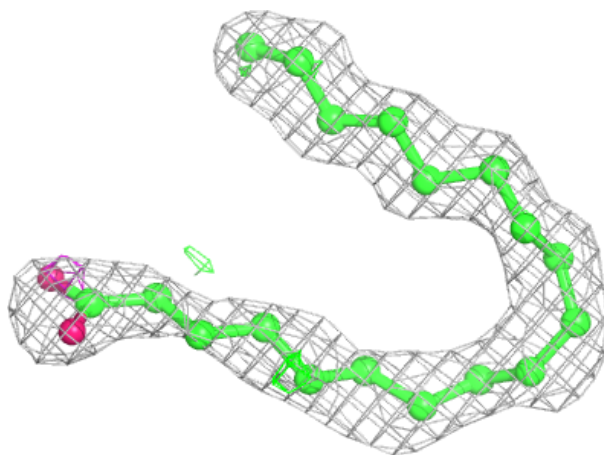
Mol	Type	Chain	Res	Atoms	RSCC	RSR	B-factors(Å ²)	Q<0.9
3	PLM	A	1101	18/18	0.53	0.34	19,38,44,44	0
4	OLA	A	2001	20/20	0.54	0.23	36,38,38,38	0
5	GOL	A	3201	6/6	0.64	0.42	34,36,37,38	0
3	PLM	A	1001[A]	18/18	0.68	0.28	36,40,45,45	18
3	PLM	A	1001[B]	18/18	0.68	0.28	36,40,46,46	18
5	GOL	A	3001	6/6	0.78	0.39	29,34,35,35	0
5	GOL	A	3101	6/6	0.82	0.40	32,34,34,35	0
2	BGC	A	1401	12/12	0.86	0.13	16,20,24,24	0

The following is a graphical depiction of the model fit to experimental electron density of all instances of the Ligand of Interest. In addition, ligands with molecular weight > 250 and outliers as shown on the geometry validation Tables will also be included. Each fit is shown from different orientation to approximate a three-dimensional view.



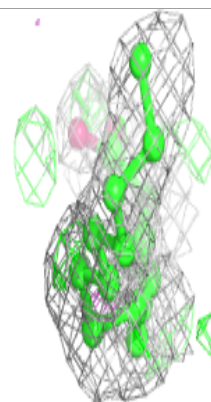
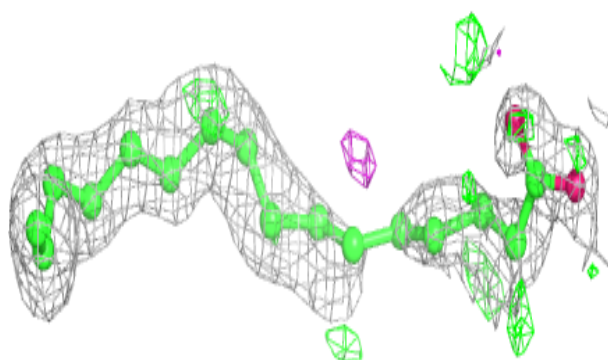
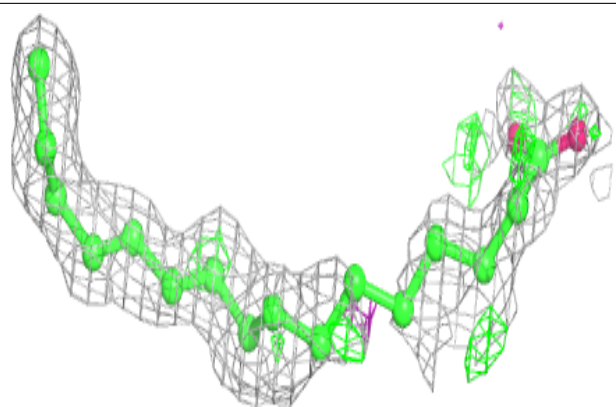
Electron density around OLA A 2001:

$2mF_o-DF_c$ (at 0.7 rmsd) in gray
 mF_o-DF_c (at 3 rmsd) in purple (negative)
and green (positive)

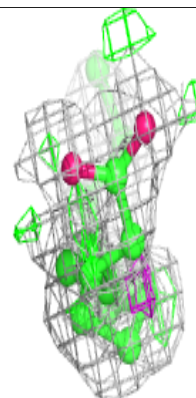
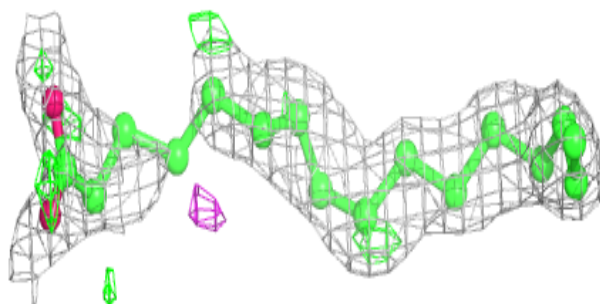
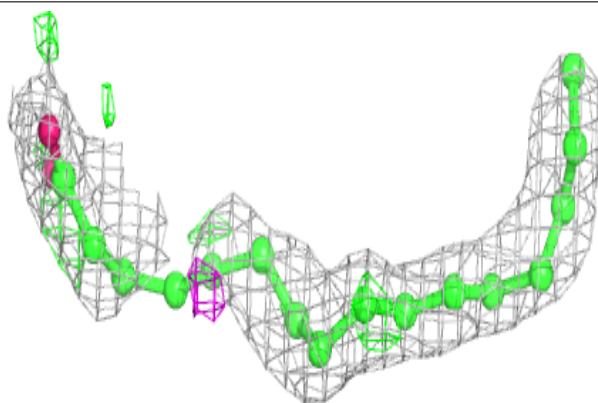


Electron density around PLM A 1001 (A):

$2mF_o-DF_c$ (at 0.7 rmsd) in gray
 mF_o-DF_c (at 3 rmsd) in purple (negative)
and green (positive)

**Electron density around PLM A 1001 (B):**

$2mF_o-DF_c$ (at 0.7 rmsd) in gray
 mF_o-DF_c (at 3 rmsd) in purple (negative)
and green (positive)



6.5 Other polymers

There are no such residues in this entry.