



Full wwPDB X-ray Structure Validation Report ⓘ

Oct 17, 2022 – 04:02 PM EDT

PDB ID : 8E9E
Title : Rat protein farnesyltransferase in complex with FPP and inhibitor 2f
Authors : Wang, Y.; Shi, Y.; Beese, L.S.
Deposited on : 2022-08-26
Resolution : 2.84 Å(reported)

This is a Full wwPDB X-ray Structure Validation Report for a publicly released PDB entry.

We welcome your comments at validation@mail.wwpdb.org

A user guide is available at

<https://www.wwpdb.org/validation/2017/XrayValidationReportHelp>

with specific help available everywhere you see the ⓘ symbol.

The types of validation reports are described at

<http://www.wwpdb.org/validation/2017/FAQs#types>.

The following versions of software and data (see [references ⓘ](#)) were used in the production of this report:

MolProbity : 4.02b-467
Mogul : 1.8.5 (274361), CSD as541be (2020)
Xtriage (Phenix) : 1.13
EDS : 2.31.2
buster-report : 1.1.7 (2018)
Percentile statistics : 20191225.v01 (using entries in the PDB archive December 25th 2019)
Refmac : 5.8.0158
CCP4 : 7.0.044 (Gargrove)
Ideal geometry (proteins) : Engh & Huber (2001)
Ideal geometry (DNA, RNA) : Parkinson et al. (1996)
Validation Pipeline (wwPDB-VP) : 2.31.2

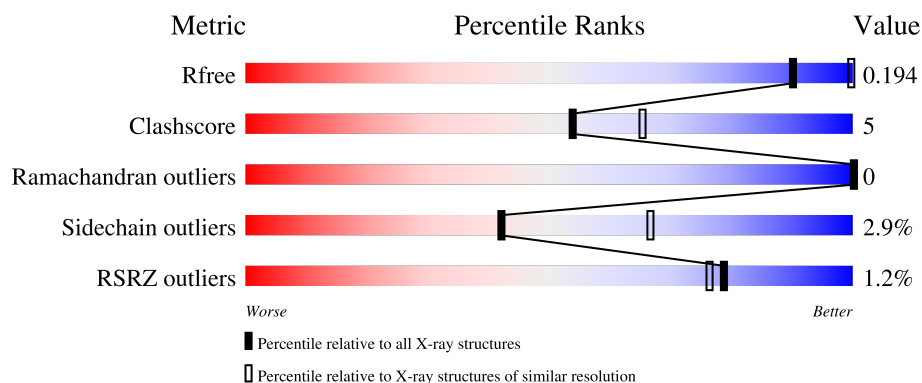
1 Overall quality at a glance

The following experimental techniques were used to determine the structure:

X-RAY DIFFRACTION

The reported resolution of this entry is 2.84 Å.

Percentile scores (ranging between 0-100) for global validation metrics of the entry are shown in the following graphic. The table shows the number of entries on which the scores are based.



Metric	Whole archive (#Entries)	Similar resolution (#Entries, resolution range(Å))
R_{free}	130704	1031 (2.86-2.82)
Clashscore	141614	1078 (2.86-2.82)
Ramachandran outliers	138981	1050 (2.86-2.82)
Sidechain outliers	138945	1051 (2.86-2.82)
RSRZ outliers	127900	1019 (2.86-2.82)

The table below summarises the geometric issues observed across the polymeric chains and their fit to the electron density. The red, orange, yellow and green segments of the lower bar indicate the fraction of residues that contain outliers for ≥ 3 , 2, 1 and 0 types of geometric quality criteria respectively. A grey segment represents the fraction of residues that are not modelled. The numeric value for each fraction is indicated below the corresponding segment, with a dot representing fractions $\leq 5\%$. The upper red bar (where present) indicates the fraction of residues that have poor fit to the electron density. The numeric value is given above the bar.

Mol	Chain	Length	Quality of chain
1	A	377	
2	B	437	

The following table lists non-polymeric compounds, carbohydrate monomers and non-standard residues in protein, DNA, RNA chains that are outliers for geometric or electron-density-fit criteria:

Mol	Type	Chain	Res	Chirality	Geometry	Clashes	Electron density
4	EDO	A	404	-	-	-	X
4	EDO	A	405	-	-	-	X

2 Entry composition [i](#)

There are 8 unique types of molecules in this entry. The entry contains 6207 atoms, of which 0 are hydrogens and 0 are deuteriums.

In the tables below, the ZeroOcc column contains the number of atoms modelled with zero occupancy, the AltConf column contains the number of residues with at least one atom in alternate conformation and the Trace column contains the number of residues modelled with at most 2 atoms.

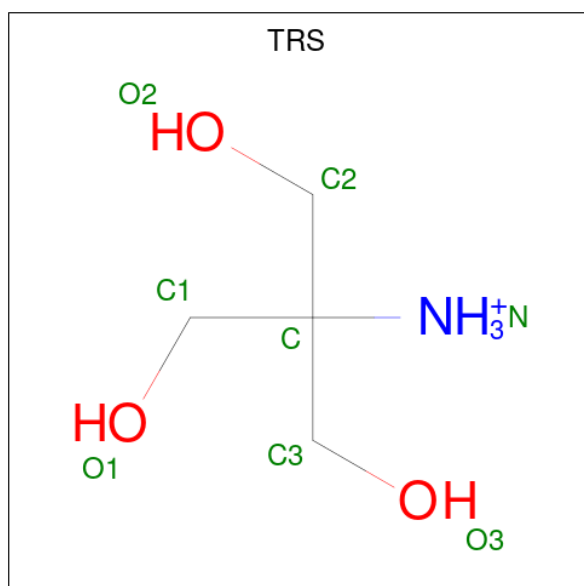
- Molecule 1 is a protein called Protein farnesyltransferase/geranylgeranyltransferase type-1 subunit alpha.

Mol	Chain	Residues	Atoms					ZeroOcc	AltConf	Trace
1	A	323	Total	C	N	O	S	0	0	0
			2745	1746	481	513	5			

- Molecule 2 is a protein called Protein farnesyltransferase subunit beta.

Mol	Chain	Residues	Atoms					ZeroOcc	AltConf	Trace
2	B	407	Total	C	N	O	S	0	0	0
			3203	2050	550	580	23			

- Molecule 3 is 2-AMINO-2-HYDROXYMETHYL-PROPANE-1,3-DIOL (three-letter code: TRS) (formula: C₄H₁₂NO₃).



Mol	Chain	Residues	Atoms				ZeroOcc	AltConf
3	A	1	Total	C	N	O	0	0
			8	4	1	3		

Continued on next page...

Continued from previous page...

Mol	Chain	Residues	Atoms				ZeroOcc	AltConf
3	A	1	Total	C	N	O	0	0
			8	4	1	3		
3	A	1	Total	C	N	O	0	0
			8	4	1	3		
3	B	1	Total	C	N	O	0	0
			8	4	1	3		

- Molecule 4 is 1,2-ETHANEDIOL (three-letter code: EDO) (formula: $C_2H_6O_2$).



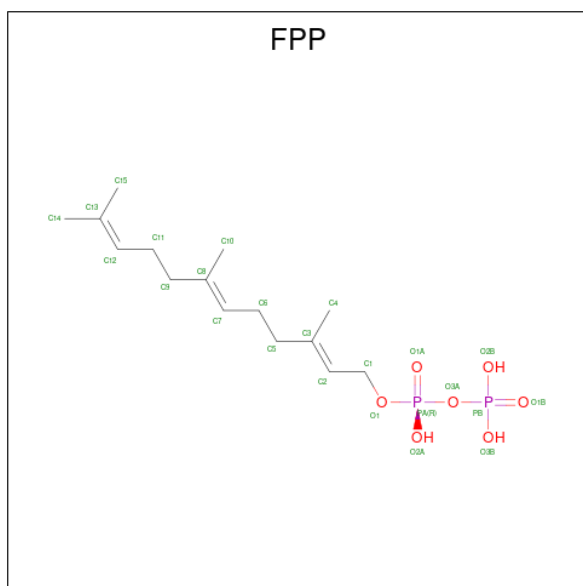
Mol	Chain	Residues	Atoms			ZeroOcc	AltConf
4	A	1	Total	C	O	0	0
			4	2	2		
4	A	1	Total	C	O	0	0
			4	2	2		
4	A	1	Total	C	O	0	0
			4	2	2		
4	B	1	Total	C	O	0	0
			4	2	2		
4	B	1	Total	C	O	0	0
			4	2	2		
4	B	1	Total	C	O	0	0
			4	2	2		
4	B	1	Total	C	O	0	0
			4	2	2		

Continued on next page...

Continued from previous page...

Mol	Chain	Residues	Atoms			ZeroOcc	AltConf
4	B	1	Total	C	O	0	0
			4	2	2		

- Molecule 5 is FARNESYL DIPHOSPHATE (three-letter code: FPP) (formula: $C_{15}H_{28}O_7P_2$).

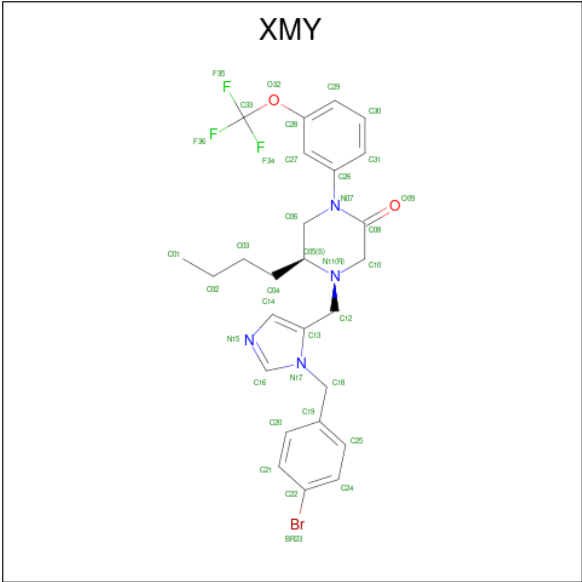


Mol	Chain	Residues	Atoms				ZeroOcc	AltConf
5	B	1	Total	C	O	P	0	0
			24	15	7	2		

- Molecule 6 is ZINC ION (three-letter code: ZN) (formula: Zn).

Mol	Chain	Residues	Atoms		ZeroOcc	AltConf
6	B	1	Total	Zn	0	0
			1	1		

- Molecule 7 is (5S)-4-({1-[(4-bromophenyl)methyl]-1H-imidazol-5-yl}methyl)-5-butyl-1-[3-(trifluoromethoxy)phenyl]piperazin-2-one (three-letter code: XMY) (formula: $C_{26}H_{28}BrF_3N_4O_2$) (labeled as "Ligand of Interest" by depositor).



Mol	Chain	Residues	Atoms						ZeroOcc	AltConf
7	B	1	Total	Br	C	F	N	O	0	0
			36	1	26	3	4	2		

- Molecule 8 is water.

Mol	Chain	Residues	Atoms		ZeroOcc	AltConf
8	A	66	Total	O	0	0
			66	66		
8	B	64	Total	O	0	0
			64	64		

4 Data and refinement statistics

Property	Value	Source
Space group	P 61	Depositor
Cell constants a, b, c, α , β , γ	169.90Å 169.90Å 69.34Å 90.00° 90.00° 120.00°	Depositor
Resolution (Å)	43.38 – 2.84 43.38 – 2.84	Depositor EDS
% Data completeness (in resolution range)	97.0 (43.38-2.84) 88.3 (43.38-2.84)	Depositor EDS
R_{merge}	0.16	Depositor
R_{sym}	(Not available)	Depositor
$\langle I/\sigma(I) \rangle$ ¹	1.14 (at 2.86Å)	Xtriage
Refinement program	PHENIX 1.14 _3260	Depositor
R, R_{free}	0.176 , 0.194 0.176 , 0.194	Depositor DCC
R_{free} test set	1945 reflections (7.36%)	wwPDB-VP
Wilson B-factor (Å ²)	41.0	Xtriage
Anisotropy	0.320	Xtriage
Bulk solvent k_{sol} (e/Å ³), B_{sol} (Å ²)	0.40 , 52.4	EDS
L-test for twinning ²	$\langle L \rangle = 0.49$, $\langle L^2 \rangle = 0.32$	Xtriage
Estimated twinning fraction	0.038 for h,-h-k,-l	Xtriage
F_o, F_c correlation	0.94	EDS
Total number of atoms	6207	wwPDB-VP
Average B, all atoms (Å ²)	46.0	wwPDB-VP

Xtriage's analysis on translational NCS is as follows: *The largest off-origin peak in the Patterson function is 3.31% of the height of the origin peak. No significant pseudotranslation is detected.*

¹Intensities estimated from amplitudes.

²Theoretical values of $\langle |L| \rangle$, $\langle L^2 \rangle$ for acentric reflections are 0.5, 0.333 respectively for untwinned datasets, and 0.375, 0.2 for perfectly twinned datasets.

5 Model quality

5.1 Standard geometry

Bond lengths and bond angles in the following residue types are not validated in this section: TRS, ZN, XMY, FPP, EDO

The Z score for a bond length (or angle) is the number of standard deviations the observed value is removed from the expected value. A bond length (or angle) with $|Z| > 5$ is considered an outlier worth inspection. RMSZ is the root-mean-square of all Z scores of the bond lengths (or angles).

Mol	Chain	Bond lengths		Bond angles	
		RMSZ	$\# Z > 5$	RMSZ	$\# Z > 5$
1	A	0.43	0/2812	0.55	0/3817
2	B	0.44	0/3292	0.55	0/4473
All	All	0.43	0/6104	0.55	0/8290

There are no bond length outliers.

There are no bond angle outliers.

There are no chirality outliers.

There are no planarity outliers.

5.2 Too-close contacts

In the following table, the Non-H and H(model) columns list the number of non-hydrogen atoms and hydrogen atoms in the chain respectively. The H(added) column lists the number of hydrogen atoms added and optimized by MolProbity. The Clashes column lists the number of clashes within the asymmetric unit, whereas Symm-Clashes lists symmetry-related clashes.

Mol	Chain	Non-H	H(model)	H(added)	Clashes	Symm-Clashes
1	A	2745	0	2666	30	0
2	B	3203	0	3130	32	0
3	A	24	0	36	1	0
3	B	8	0	12	0	0
4	A	12	0	18	1	0
4	B	24	0	36	3	0
5	B	24	0	25	2	0
6	B	1	0	0	0	0
7	B	36	0	0	0	0
8	A	66	0	0	2	0
8	B	64	0	0	4	0
All	All	6207	0	5923	63	0

The all-atom clashscore is defined as the number of clashes found per 1000 atoms (including hydrogen atoms). The all-atom clashscore for this structure is 5.

All (63) close contacts within the same asymmetric unit are listed below, sorted by their clash magnitude.

Atom-1	Atom-2	Interatomic distance (Å)	Clash overlap (Å)
1:A:156:ILE:HG22	1:A:172:ARG:HH12	1.30	0.96
1:A:173:ARG:HD3	4:B:508:EDO:H21	1.80	0.64
1:A:156:ILE:HG22	1:A:172:ARG:NH1	2.08	0.63
2:B:75:ARG:NH2	2:B:393:VAL:O	2.30	0.63
1:A:346:LYS:HE3	1:A:357:ARG:HH22	1.64	0.62
1:A:96:PHE:HA	1:A:126:LEU:HD13	1.82	0.61
2:B:202:ARG:HH12	4:B:506:EDO:H11	1.68	0.58
1:A:152:MET:O	1:A:156:ILE:HG23	2.03	0.58
1:A:77:PRO:HG3	1:A:102:TYR:CZ	2.39	0.57
2:B:260:VAL:HG22	2:B:265:GLU:HG2	1.86	0.57
1:A:312:ILE:HB	1:A:344:LEU:HD21	1.86	0.57
2:B:87:ARG:NH2	2:B:125:ASP:OD2	2.33	0.57
2:B:283:ARG:NH1	8:B:603:HOH:O	2.40	0.55
1:A:294:ASN:O	1:A:298:GLN:HG3	2.08	0.53
1:A:148:LEU:HB2	1:A:179:LEU:HD21	1.89	0.53
2:B:306:GLY:O	2:B:309:PRO:HD2	2.08	0.52
1:A:156:ILE:O	1:A:160:GLU:HG2	2.10	0.51
1:A:189:ILE:HD11	1:A:205:HIS:CD2	2.46	0.51
2:B:250:GLY:HA3	5:B:501:FPP:C8	2.41	0.50
2:B:253:PHE:HA	2:B:307:LEU:HD21	1.94	0.49
1:A:189:ILE:HD11	1:A:205:HIS:HD2	1.78	0.48
2:B:254:CYS:SG	5:B:501:FPP:H143	2.53	0.48
1:A:303:GLN:O	1:A:307:SER:HB2	2.13	0.48
2:B:333:GLN:HG3	2:B:387:MET:SD	2.54	0.47
2:B:99:SER:O	2:B:102:TRP:HB2	2.14	0.47
2:B:239:ILE:HB	2:B:252:THR:HA	1.95	0.47
2:B:297:ASP:HB3	2:B:300:TYR:CD1	2.49	0.47
1:A:189:ILE:HG21	1:A:206:ARG:HB2	1.96	0.46
2:B:299:CYS:HB3	2:B:362:HIS:CD2	2.49	0.46
1:A:121:ARG:O	1:A:125:GLU:HG3	2.16	0.46
2:B:308:LEU:HD13	2:B:330:PHE:HD2	1.80	0.46
2:B:308:LEU:HD13	2:B:330:PHE:HB3	1.98	0.46
1:A:204:GLN:HG3	2:B:245:MET:HG3	1.97	0.46
1:A:86:PRO:HB3	8:B:634:HOH:O	2.15	0.46
2:B:304:GLN:O	2:B:307:LEU:HB2	2.15	0.45
1:A:241:HIS:HA	1:A:250:TYR:OH	2.16	0.45
2:B:62:TYR:CD2	2:B:69:PRO:HA	2.51	0.45

Continued on next page...

Continued from previous page...

Atom-1	Atom-2	Interatomic distance (Å)	Clash overlap (Å)
4:B:507:EDO:H21	8:B:659:HOH:O	2.16	0.45
1:A:117:PHE:CE2	1:A:146:LYS:HE2	2.52	0.45
1:A:241:HIS:O	1:A:245:SER:HB2	2.17	0.45
1:A:269:LEU:HD23	4:A:405:EDO:H12	1.99	0.44
2:B:192:LEU:HD23	2:B:199:VAL:HG23	1.98	0.44
2:B:34:ARG:HD3	2:B:284:PHE:CZ	2.53	0.44
2:B:194:HIS:CD2	2:B:197:GLY:HA3	2.52	0.44
2:B:368:SER:O	2:B:372:ILE:HG12	2.18	0.44
1:A:308:SER:O	1:A:312:ILE:HG12	2.18	0.43
2:B:87:ARG:HD3	8:B:605:HOH:O	2.18	0.43
2:B:150:LEU:HD23	2:B:150:LEU:HA	1.73	0.43
1:A:58:LEU:HD22	1:A:95:LYS:HE3	2.00	0.43
1:A:291:ARG:HH11	1:A:291:ARG:HA	1.81	0.43
2:B:308:LEU:HD13	2:B:330:PHE:CD2	2.53	0.43
3:A:402:TRS:H12	8:A:565:HOH:O	2.18	0.43
1:A:208:TRP:NE1	1:A:212:GLU:HG3	2.34	0.43
2:B:34:ARG:HD3	2:B:284:PHE:CE1	2.54	0.43
1:A:346:LYS:HE3	1:A:357:ARG:NH2	2.32	0.43
2:B:282:MET:HG3	2:B:296:VAL:HB	2.01	0.42
2:B:185:LYS:HD3	2:B:191:PHE:CZ	2.55	0.42
1:A:156:ILE:HG13	1:A:157:ALA:N	2.35	0.42
1:A:184:GLN:NE2	8:A:503:HOH:O	2.41	0.41
2:B:308:LEU:N	2:B:309:PRO:CD	2.83	0.41
2:B:256:LEU:O	2:B:260:VAL:HG23	2.21	0.41
1:A:152:MET:HG2	1:A:175:LEU:HD13	2.03	0.41
2:B:192:LEU:HD23	2:B:199:VAL:CG2	2.52	0.40

There are no symmetry-related clashes.

5.3 Torsion angles [i](#)

5.3.1 Protein backbone [i](#)

In the following table, the Percentiles column shows the percent Ramachandran outliers of the chain as a percentile score with respect to all X-ray entries followed by that with respect to entries of similar resolution.

The Analysed column shows the number of residues for which the backbone conformation was analysed, and the total number of residues.

Mol	Chain	Analysed	Favoured	Allowed	Outliers	Percentiles	
1	A	321/377 (85%)	310 (97%)	11 (3%)	0	100	100
2	B	405/437 (93%)	397 (98%)	8 (2%)	0	100	100
All	All	726/814 (89%)	707 (97%)	19 (3%)	0	100	100

There are no Ramachandran outliers to report.

5.3.2 Protein sidechains ⓘ

In the following table, the Percentiles column shows the percent sidechain outliers of the chain as a percentile score with respect to all X-ray entries followed by that with respect to entries of similar resolution.

The Analysed column shows the number of residues for which the sidechain conformation was analysed, and the total number of residues.

Mol	Chain	Analysed	Rotameric	Outliers	Percentiles	
1	A	301/338 (89%)	289 (96%)	12 (4%)	31	57
2	B	344/371 (93%)	337 (98%)	7 (2%)	55	76
All	All	645/709 (91%)	626 (97%)	19 (3%)	42	67

All (19) residues with a non-rotameric sidechain are listed below:

Mol	Chain	Res	Type
1	A	57	SER
1	A	58	LEU
1	A	121	ARG
1	A	245	SER
1	A	257	GLU
1	A	287	ARG
1	A	291	ARG
1	A	303	GLN
1	A	334	LEU
1	A	346	LYS
1	A	348	LYS
1	A	362	SER
2	B	68	VAL
2	B	71	LEU
2	B	87	ARG
2	B	121	ILE
2	B	201	VAL
2	B	265	GLU

Continued on next page...

Continued from previous page...

Mol	Chain	Res	Type
2	B	352	ASP

Sometimes sidechains can be flipped to improve hydrogen bonding and reduce clashes. All (1) such sidechains are listed below:

Mol	Chain	Res	Type
2	B	293	ASN

5.3.3 RNA ⓘ

There are no RNA molecules in this entry.

5.4 Non-standard residues in protein, DNA, RNA chains ⓘ

There are no non-standard protein/DNA/RNA residues in this entry.

5.5 Carbohydrates ⓘ

There are no monosaccharides in this entry.

5.6 Ligand geometry ⓘ

Of 16 ligands modelled in this entry, 1 is monoatomic - leaving 15 for Mogul analysis.

In the following table, the Counts columns list the number of bonds (or angles) for which Mogul statistics could be retrieved, the number of bonds (or angles) that are observed in the model and the number of bonds (or angles) that are defined in the Chemical Component Dictionary. The Link column lists molecule types, if any, to which the group is linked. The Z score for a bond length (or angle) is the number of standard deviations the observed value is removed from the expected value. A bond length (or angle) with $|Z| > 2$ is considered an outlier worth inspection. RMSZ is the root-mean-square of all Z scores of the bond lengths (or angles).

Mol	Type	Chain	Res	Link	Bond lengths			Bond angles		
					Counts	RMSZ	$\# Z > 2$	Counts	RMSZ	$\# Z > 2$
5	FPP	B	501	-	21,23,23	0.94	1 (4%)	27,31,31	2.02	5 (18%)
4	EDO	B	510	-	3,3,3	0.49	0	2,2,2	0.29	0
4	EDO	B	506	-	3,3,3	0.60	0	2,2,2	0.26	0
3	TRS	B	505	-	7,7,7	0.48	0	9,9,9	1.20	1 (11%)
4	EDO	B	508	-	3,3,3	0.56	0	2,2,2	0.29	0
4	EDO	A	406	-	3,3,3	0.56	0	2,2,2	0.13	0

Mol	Type	Chain	Res	Link	Bond lengths			Bond angles		
					Counts	RMSZ	# Z > 2	Counts	RMSZ	# Z > 2
4	EDO	B	509	-	3,3,3	0.50	0	2,2,2	0.35	0
3	TRS	A	401	-	7,7,7	0.32	0	9,9,9	0.53	0
4	EDO	A	404	-	3,3,3	0.57	0	2,2,2	0.19	0
7	XMY	B	503	6	36,39,39	2.88	12 (33%)	48,55,55	1.26	5 (10%)
3	TRS	A	402	-	7,7,7	0.32	0	9,9,9	0.30	0
4	EDO	A	405	-	3,3,3	0.60	0	2,2,2	0.03	0
4	EDO	B	504	-	3,3,3	0.54	0	2,2,2	0.09	0
3	TRS	A	403	-	7,7,7	0.26	0	9,9,9	0.40	0
4	EDO	B	507	-	3,3,3	0.56	0	2,2,2	0.16	0

In the following table, the Chirals column lists the number of chiral outliers, the number of chiral centers analysed, the number of these observed in the model and the number defined in the Chemical Component Dictionary. Similar counts are reported in the Torsion and Rings columns. '-' means no outliers of that kind were identified.

Mol	Type	Chain	Res	Link	Chirals	Torsions	Rings
5	FPP	B	501	-	-	6/25/25/25	-
4	EDO	B	510	-	-	1/1/1/1	-
4	EDO	B	506	-	-	0/1/1/1	-
3	TRS	B	505	-	-	3/9/9/9	-
4	EDO	B	508	-	-	0/1/1/1	-
4	EDO	A	406	-	-	0/1/1/1	-
4	EDO	B	509	-	-	1/1/1/1	-
3	TRS	A	401	-	-	3/9/9/9	-
4	EDO	A	404	-	-	1/1/1/1	-
7	XMY	B	503	6	-	4/21/37/37	0/4/4/4
3	TRS	A	402	-	-	1/9/9/9	-
4	EDO	A	405	-	-	1/1/1/1	-
4	EDO	B	504	-	-	0/1/1/1	-
3	TRS	A	403	-	-	4/9/9/9	-
4	EDO	B	507	-	-	0/1/1/1	-

All (13) bond length outliers are listed below:

Mol	Chain	Res	Type	Atoms	Z	Observed(Å)	Ideal(Å)
7	B	503	XMY	C12-N11	-10.56	1.29	1.47
7	B	503	XMY	C08-N07	6.34	1.46	1.36
7	B	503	XMY	C05-N11	-5.04	1.39	1.48
7	B	503	XMY	C12-C13	4.65	1.58	1.51
7	B	503	XMY	C10-N11	-4.56	1.36	1.47
7	B	503	XMY	C10-C08	4.40	1.59	1.51

Continued on next page...

Continued from previous page...

Mol	Chain	Res	Type	Atoms	Z	Observed(Å)	Ideal(Å)
7	B	503	XYM	O09-C08	-3.77	1.14	1.23
5	B	501	FPP	O1-C1	-2.51	1.40	1.43
7	B	503	XYM	C31-C26	-2.36	1.34	1.39
7	B	503	XYM	C04-C05	2.31	1.61	1.52
7	B	503	XYM	BR23-C22	2.13	1.94	1.90
7	B	503	XYM	C06-C05	-2.06	1.48	1.52
7	B	503	XYM	C18-C19	2.03	1.56	1.51

All (11) bond angle outliers are listed below:

Mol	Chain	Res	Type	Atoms	Z	Observed(°)	Ideal(°)
5	B	501	FPP	C10-C8-C9	6.33	125.92	115.27
5	B	501	FPP	C9-C8-C7	-4.96	111.09	121.12
7	B	503	XYM	C05-C06-N07	4.68	116.20	109.68
7	B	503	XYM	N15-C16-N17	-2.86	108.01	112.26
5	B	501	FPP	C5-C6-C7	-2.73	102.92	111.88
7	B	503	XYM	C04-C05-C06	-2.66	107.04	112.35
5	B	501	FPP	PA-O3A-PB	-2.59	123.95	132.83
3	B	505	TRS	O1-C1-C	2.49	118.87	111.00
5	B	501	FPP	C15-C13-C14	2.24	119.56	114.60
7	B	503	XYM	C06-N07-C08	-2.19	118.69	122.21
7	B	503	XYM	C12-C13-C14	-2.06	126.70	129.46

There are no chirality outliers.

All (25) torsion outliers are listed below:

Mol	Chain	Res	Type	Atoms
3	B	505	TRS	C3-C-C1-O1
5	B	501	FPP	C7-C8-C9-C11
5	B	501	FPP	C10-C8-C9-C11
5	B	501	FPP	C12-C11-C9-C8
5	B	501	FPP	C4-C3-C5-C6
4	A	405	EDO	O1-C1-C2-O2
4	B	510	EDO	O1-C1-C2-O2
5	B	501	FPP	C2-C3-C5-C6
3	B	505	TRS	C2-C-C1-O1
3	A	401	TRS	C3-C-C1-O1
3	A	401	TRS	N-C-C1-O1
3	A	403	TRS	N-C-C3-O3
3	B	505	TRS	N-C-C1-O1
7	B	503	XYM	N17-C18-C19-C20
7	B	503	XYM	N17-C18-C19-C25

Continued on next page...

Continued from previous page...

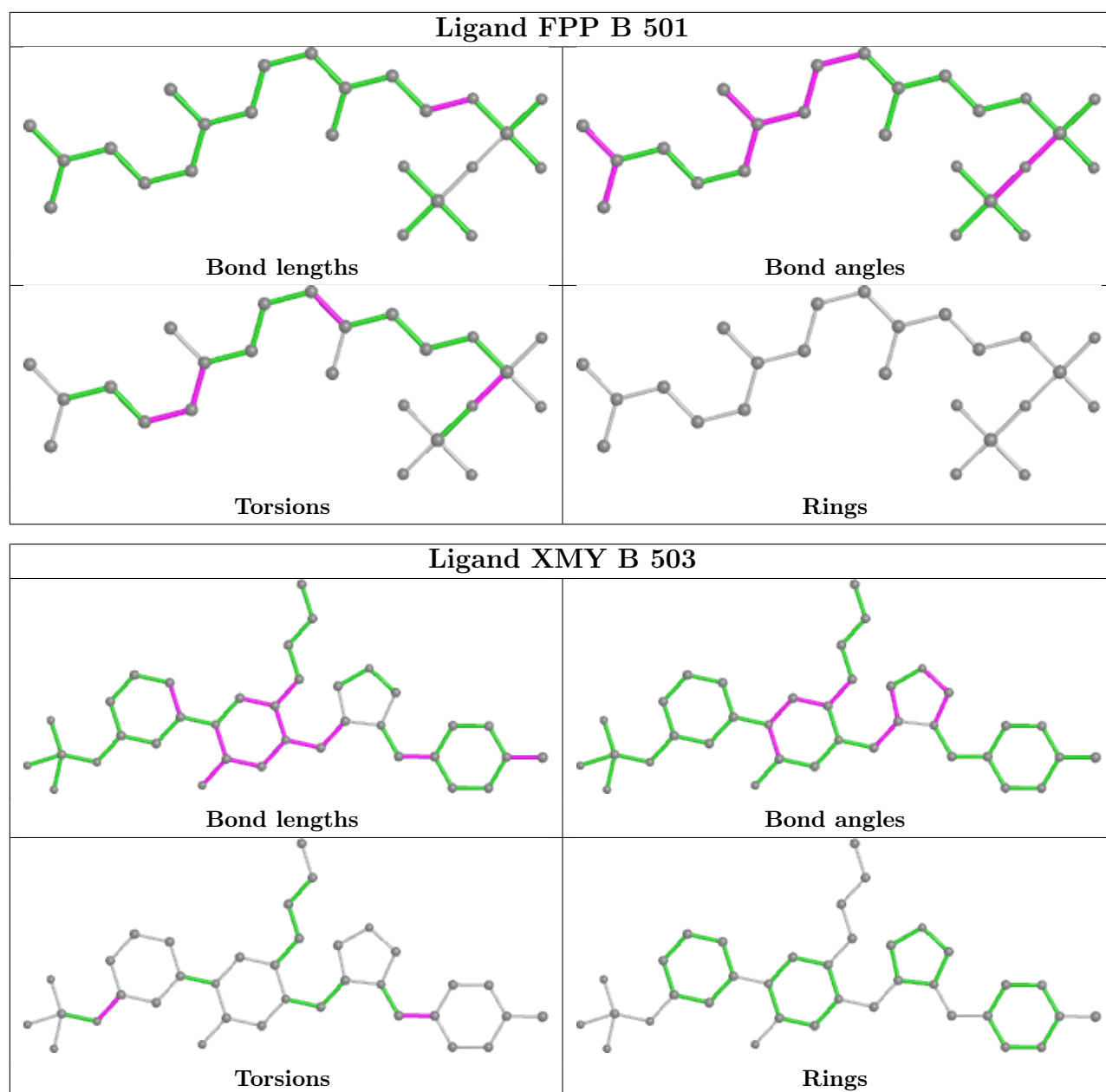
Mol	Chain	Res	Type	Atoms
5	B	501	FPP	PB-O3A-PA-O2A
4	A	404	EDO	O1-C1-C2-O2
3	A	401	TRS	C2-C-C1-O1
3	A	403	TRS	C1-C-C3-O3
3	A	403	TRS	C2-C-C3-O3
7	B	503	XMY	C27-C28-O32-C33
7	B	503	XMY	C29-C28-O32-C33
3	A	402	TRS	N-C-C1-O1
3	A	403	TRS	C3-C-C2-O2
4	B	509	EDO	O1-C1-C2-O2

There are no ring outliers.

6 monomers are involved in 7 short contacts:

Mol	Chain	Res	Type	Clashes	Symm-Clashes
5	B	501	FPP	2	0
4	B	506	EDO	1	0
4	B	508	EDO	1	0
3	A	402	TRS	1	0
4	A	405	EDO	1	0
4	B	507	EDO	1	0

The following is a two-dimensional graphical depiction of Mogul quality analysis of bond lengths, bond angles, torsion angles, and ring geometry for all instances of the Ligand of Interest. In addition, ligands with molecular weight > 250 and outliers as shown on the validation Tables will also be included. For torsion angles, if less than 5% of the Mogul distribution of torsion angles is within 10 degrees of the torsion angle in question, then that torsion angle is considered an outlier. Any bond that is central to one or more torsion angles identified as an outlier by Mogul will be highlighted in the graph. For rings, the root-mean-square deviation (RMSD) between the ring in question and similar rings identified by Mogul is calculated over all ring torsion angles. If the average RMSD is greater than 60 degrees and the minimal RMSD between the ring in question and any Mogul-identified rings is also greater than 60 degrees, then that ring is considered an outlier. The outliers are highlighted in purple. The color gray indicates Mogul did not find sufficient equivalents in the CSD to analyse the geometry.



5.7 Other polymers [i](#)

There are no such residues in this entry.

5.8 Polymer linkage issues [i](#)

There are no chain breaks in this entry.

6 Fit of model and data [i](#)

6.1 Protein, DNA and RNA chains [i](#)

In the following table, the column labelled ‘#RSRZ > 2’ contains the number (and percentage) of RSRZ outliers, followed by percent RSRZ outliers for the chain as percentile scores relative to all X-ray entries and entries of similar resolution. The OWAB column contains the minimum, median, 95th percentile and maximum values of the occupancy-weighted average B-factor per residue. The column labelled ‘Q < 0.9’ lists the number of (and percentage) of residues with an average occupancy less than 0.9.

Mol	Chain	Analysed	<RSRZ>	#RSRZ>2	OWAB(Å ²)	Q<0.9
1	A	323/377 (85%)	-0.07	3 (0%) 84 83	34, 45, 72, 104	0
2	B	407/437 (93%)	-0.10	6 (1%) 73 70	31, 42, 64, 95	0
All	All	730/814 (89%)	-0.08	9 (1%) 79 76	31, 44, 67, 104	0

All (9) RSRZ outliers are listed below:

Mol	Chain	Res	Type	RSRZ
1	A	305	SER	3.6
2	B	19	TRP	3.4
2	B	380	ALA	3.2
2	B	64	PHE	2.9
2	B	423	PHE	2.7
1	A	306	HIS	2.4
2	B	378	SER	2.2
1	A	303	GLN	2.1
2	B	381	MET	2.1

6.2 Non-standard residues in protein, DNA, RNA chains [i](#)

There are no non-standard protein/DNA/RNA residues in this entry.

6.3 Carbohydrates [i](#)

There are no monosaccharides in this entry.

6.4 Ligands [i](#)

In the following table, the Atoms column lists the number of modelled atoms in the group and the number defined in the chemical component dictionary. The B-factors column lists the minimum,

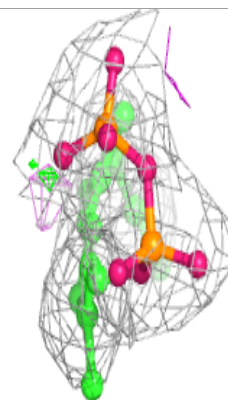
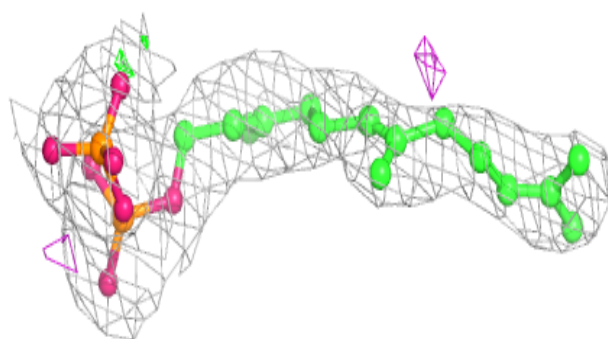
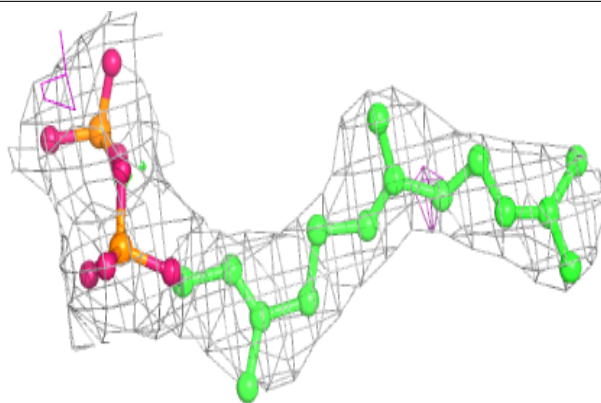
median, 95th percentile and maximum values of B factors of atoms in the group. The column labelled 'Q< 0.9' lists the number of atoms with occupancy less than 0.9.

Mol	Type	Chain	Res	Atoms	RSCC	RSR	B-factors(Å ²)	Q<0.9
4	EDO	B	510	4/4	0.64	0.36	59,61,63,63	0
4	EDO	A	406	4/4	0.73	0.38	64,64,65,70	0
4	EDO	A	405	4/4	0.73	0.45	62,62,66,71	0
3	TRS	A	401	8/8	0.76	0.27	62,64,79,82	0
3	TRS	A	402	8/8	0.77	0.25	67,77,82,86	0
4	EDO	B	509	4/4	0.78	0.37	68,71,71,74	0
3	TRS	B	505	8/8	0.78	0.35	44,56,62,65	0
4	EDO	A	404	4/4	0.80	0.47	53,60,63,68	0
4	EDO	B	508	4/4	0.81	0.33	53,59,63,65	0
4	EDO	B	504	4/4	0.82	0.29	48,53,55,64	0
4	EDO	B	507	4/4	0.84	0.48	64,65,69,73	0
3	TRS	A	403	8/8	0.88	0.20	55,70,73,75	0
4	EDO	B	506	4/4	0.89	0.23	49,50,50,57	0
5	FPP	B	501	24/24	0.98	0.23	24,34,41,43	0
6	ZN	B	502	1/1	0.98	0.17	35,35,35,35	0
7	XMY	B	503	36/36	0.98	0.17	32,39,43,62	0

The following is a graphical depiction of the model fit to experimental electron density of all instances of the Ligand of Interest. In addition, ligands with molecular weight > 250 and outliers as shown on the geometry validation Tables will also be included. Each fit is shown from different orientation to approximate a three-dimensional view.

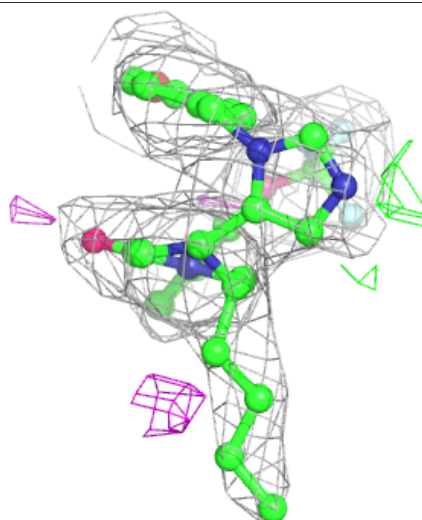
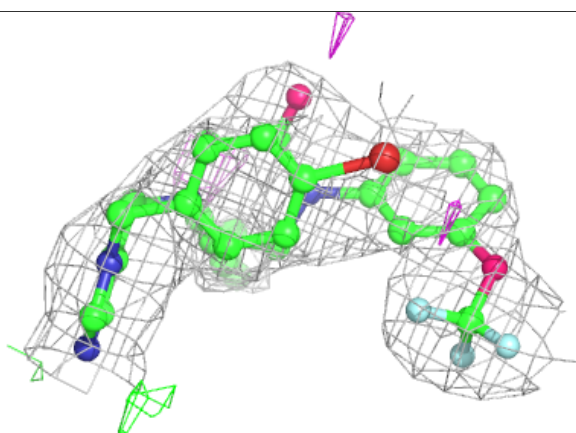
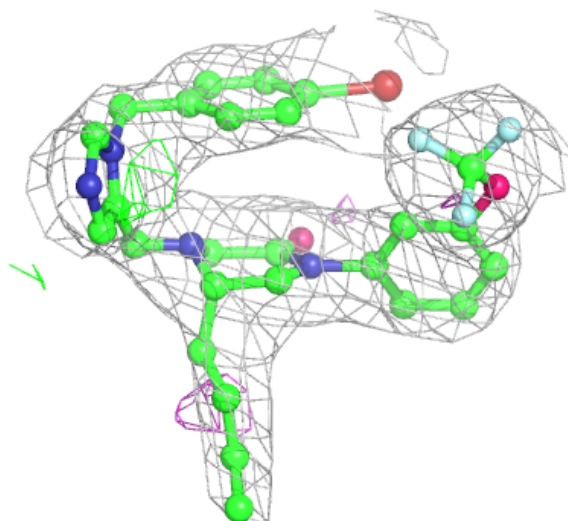
Electron density around FPP B 501:

$2mF_o - DF_c$ (at 0.7 rmsd) in gray
 $mF_o - DF_c$ (at 3 rmsd) in purple (negative)
and green (positive)



Electron density around XMY B 503:

$2mF_o-DF_c$ (at 0.7 rmsd) in gray
 mF_o-DF_c (at 3 rmsd) in purple (negative)
and green (positive)



6.5 Other polymers ⓘ

There are no such residues in this entry.