



# Full wwPDB X-ray Structure Validation Report ⓘ

May 24, 2020 – 09:07 pm BST

PDB ID : 4EB5  
Title : A. fulgidus IscS-IscU complex structure  
Authors : Marinoni, E.N.; de Oliveira, J.S.; Nicolet, Y.; Raulfs, E.C.; Amara, P.; Dean, D.R.; Fontecilla-Camps, J.C.  
Deposited on : 2012-03-23  
Resolution : 2.53 Å(reported)

This is a Full wwPDB X-ray Structure Validation Report for a publicly released PDB entry.

We welcome your comments at [validation@mail.wwpdb.org](mailto:validation@mail.wwpdb.org)

A user guide is available at

<https://www.wwpdb.org/validation/2017/XrayValidationReportHelp>

with specific help available everywhere you see the ⓘ symbol.

---

The following versions of software and data (see [references ⓘ](#)) were used in the production of this report:

MolProbity : 4.02b-467  
Mogul : 1.8.5 (274361), CSD as541be (2020)  
Xtriage (Phenix) : 1.13  
EDS : 2.11  
Percentile statistics : 20191225.v01 (using entries in the PDB archive December 25th 2019)  
Refmac : 5.8.0158  
CCP4 : 7.0.044 (Gargrove)  
Ideal geometry (proteins) : Engh & Huber (2001)  
Ideal geometry (DNA, RNA) : Parkinson et al. (1996)  
Validation Pipeline (wwPDB-VP) : 2.11

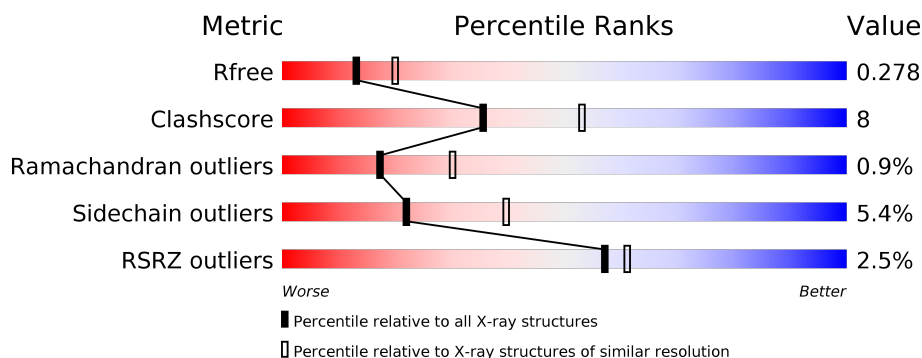
# 1 Overall quality at a glance ⓘ

The following experimental techniques were used to determine the structure:

## *X-RAY DIFFRACTION*

The reported resolution of this entry is 2.53 Å.

Percentile scores (ranging between 0-100) for global validation metrics of the entry are shown in the following graphic. The table shows the number of entries on which the scores are based.



Metric	Whole archive (#Entries)	Similar resolution (#Entries, resolution range(Å))
$R_{free}$	130704	5743 (2.54-2.50)
Clashscore	141614	6463 (2.54-2.50)
Ramachandran outliers	138981	6335 (2.54-2.50)
Sidechain outliers	138945	6337 (2.54-2.50)
RSRZ outliers	127900	5630 (2.54-2.50)

The table below summarises the geometric issues observed across the polymeric chains and their fit to the electron density. The red, orange, yellow and green segments on the lower bar indicate the fraction of residues that contain outliers for  $\geq 3$ , 2, 1 and 0 types of geometric quality criteria respectively. A grey segment represents the fraction of residues that are not modelled. The numeric value for each fraction is indicated below the corresponding segment, with a dot representing fractions  $\leq 5\%$ . The upper red bar (where present) indicates the fraction of residues that have poor fit to the electron density. The numeric value is given above the bar.

Mol	Chain	Length	Quality of chain
1	A	382	<div> <div>83%</div> <div>15%</div> <div>..</div> </div>
1	B	382	<div> <div>%</div> <div>85%</div> <div>13%</div> <div>..</div> </div>
2	C	153	<div> <div>%</div> <div>70%</div> <div>16%</div> <div>..</div> <div>10%</div> </div>
2	D	153	<div> <div>14%</div> <div>61%</div> <div>25%</div> <div>..</div> <div>10%</div> </div>

## 2 Entry composition

There are 7 unique types of molecules in this entry. The entry contains 7697 atoms, of which 0 are hydrogens and 0 are deuteriums.

In the tables below, the ZeroOcc column contains the number of atoms modelled with zero occupancy, the AltConf column contains the number of residues with at least one atom in alternate conformation and the Trace column contains the number of residues modelled with at most 2 atoms.

- Molecule 1 is a protein called Probable cysteine desulfurase 2.

Mol	Chain	Residues	Atoms					ZeroOcc	AltConf	Trace
1	A	379	Total	C	N	O	S	0	1	0
			2847	1797	492	548	10			
1	B	377	Total	C	N	O	S	0	0	0
			2723	1720	474	519	10			

There are 2 discrepancies between the modelled and reference sequences:

Chain	Residue	Modelled	Actual	Comment	Reference
A	16	ILE	VAL	SEE REMARK 999	UNP O29689
B	16	ILE	VAL	SEE REMARK 999	UNP O29689

- Molecule 2 is a protein called NifU protein (NifU-1).

Mol	Chain	Residues	Atoms					ZeroOcc	AltConf	Trace
2	C	138	Total	C	N	O	S	0	0	0
			966	612	167	180	7			
2	D	138	Total	C	N	O	S	0	0	0
			925	582	163	173	7			

- Molecule 3 is PYRIDOXAL-5'-PHOSPHATE (three-letter code: PLP) (formula: C<sub>8</sub>H<sub>10</sub>NO<sub>6</sub>P).



Mol	Chain	Residues	Atoms					ZeroOcc	AltConf
3	A	1	Total	C	N	O	P	0	0
			16	8	1	6	1		
3	B	1	Total	C	N	O	P	0	0
			16	8	1	6	1		

- Molecule 4 is GLYCEROL (three-letter code: GOL) (formula:  $C_3H_8O_3$ ).



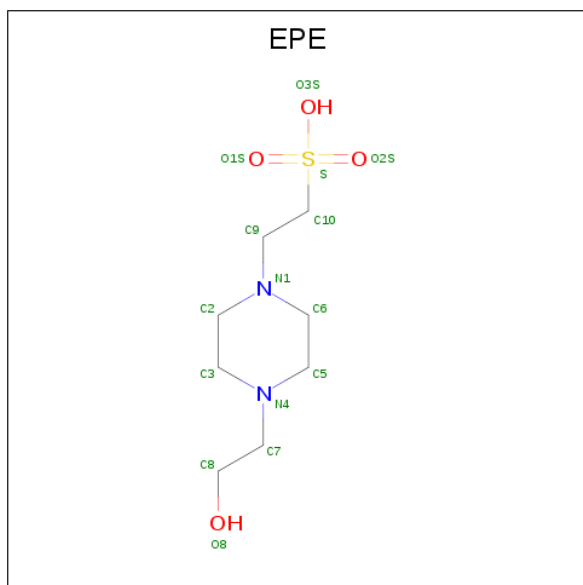
Mol	Chain	Residues	Atoms			ZeroOcc	AltConf
4	A	1	Total	C	O	0	0
			6	3	3		
4	A	1	Total	C	O	0	0
			6	3	3		

*Continued on next page...*

Continued from previous page...

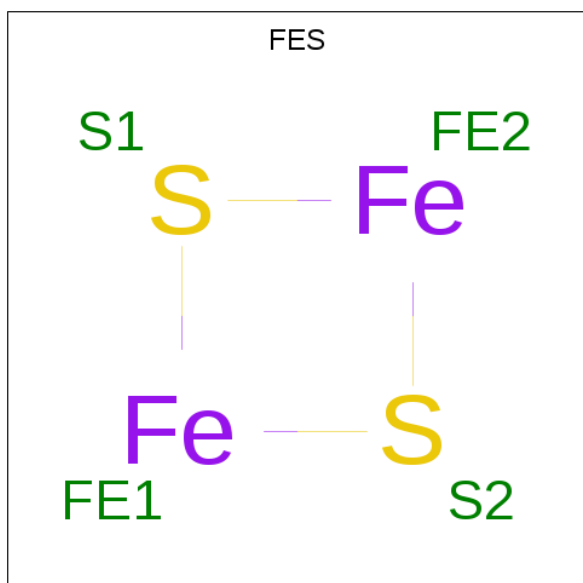
Mol	Chain	Residues	Atoms			ZeroOcc	AltConf
4	B	1	Total	C	O	0	0
			6	3	3		

- Molecule 5 is 4-(2-HYDROXYETHYL)-1-PIPERAZINE ETHANESULFONIC ACID (three-letter code: EPE) (formula: C<sub>8</sub>H<sub>18</sub>N<sub>2</sub>O<sub>4</sub>S).



Mol	Chain	Residues	Atoms					ZeroOcc	AltConf
5	A	1	Total	C	N	O	S	0	0
			15	8	2	4	1		

- Molecule 6 is FE2/S2 (INORGANIC) CLUSTER (three-letter code: FES) (formula: Fe<sub>2</sub>S<sub>2</sub>).



Mol	Chain	Residues	Atoms			ZeroOcc	AltConf
6	C	1	Total 4	Fe 2	S 2	0	0
6	D	1	Total 4	Fe 2	S 2	0	0

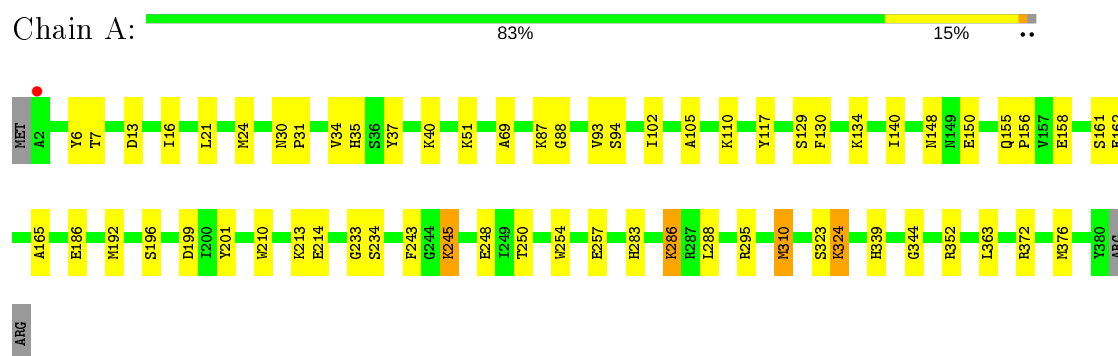
- Molecule 7 is water.

Mol	Chain	Residues	Atoms		ZeroOcc	AltConf
7	A	102	Total 102	O 102	0	0
7	B	51	Total 51	O 51	0	0
7	C	8	Total 8	O 8	0	0
7	D	2	Total 2	O 2	0	0

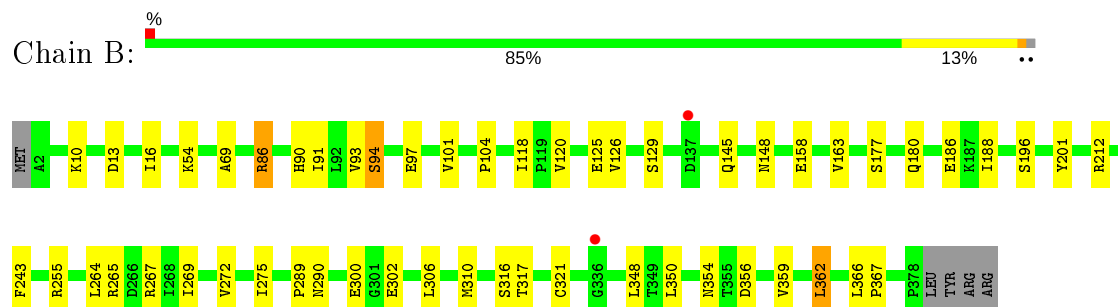
### 3 Residue-property plots [i](#)

These plots are drawn for all protein, RNA and DNA chains in the entry. The first graphic for a chain summarises the proportions of the various outlier classes displayed in the second graphic. The second graphic shows the sequence view annotated by issues in geometry and electron density. Residues are color-coded according to the number of geometric quality criteria for which they contain at least one outlier: green = 0, yellow = 1, orange = 2 and red = 3 or more. A red dot above a residue indicates a poor fit to the electron density ( $RSRZ > 2$ ). Stretches of 2 or more consecutive residues without any outlier are shown as a green connector. Residues present in the sample, but not in the model, are shown in grey.

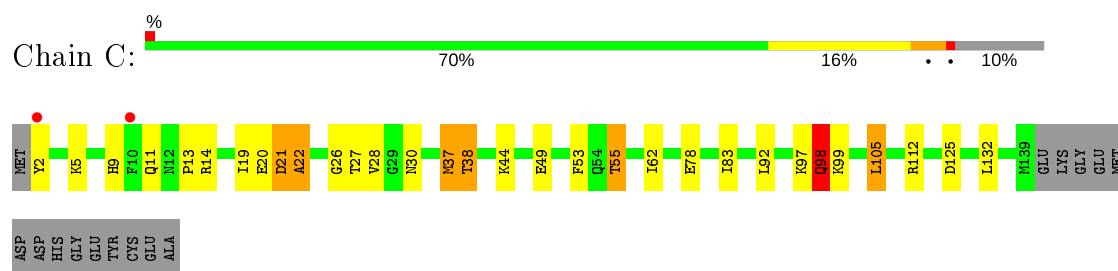
- Molecule 1: Probable cysteine desulfurase 2



- Molecule 1: Probable cysteine desulfurase 2

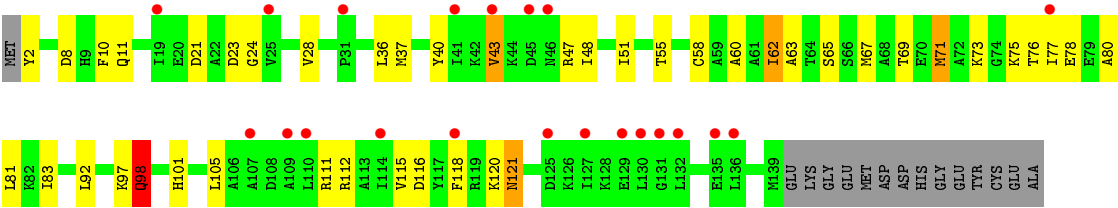


- Molecule 2: NifU protein (NifU-1)



- Molecule 2: NifU protein (NifU-1)







## 4 Data and refinement statistics

Property	Value	Source
Space group	P 21 21 21	Depositor
Cell constants a, b, c, $\alpha$ , $\beta$ , $\gamma$	76.41 Å 94.90 Å 150.59 Å 90.00° 90.00° 90.00°	Depositor
Resolution (Å)	80.28 – 2.53 75.29 – 2.53	Depositor EDS
% Data completeness (in resolution range)	96.1 (80.28-2.53) 96.1 (75.29-2.53)	Depositor EDS
$R_{merge}$	(Not available)	Depositor
$R_{sym}$	0.08	Depositor
$\langle I/\sigma(I) \rangle$ <sup>1</sup>	6.54 (at 2.51 Å)	Xtriage
Refinement program	REFMAC 5.5.0109	Depositor
R, $R_{free}$	0.208 , 0.279 0.210 , 0.278	Depositor DCC
$R_{free}$ test set	1838 reflections (5.11%)	wwPDB-VP
Wilson B-factor (Å <sup>2</sup> )	39.2	Xtriage
Anisotropy	0.516	Xtriage
Bulk solvent $k_{sol}$ (e/Å <sup>3</sup> ), $B_{sol}$ (Å <sup>2</sup> )	0.37 , 57.5	EDS
L-test for twinning <sup>2</sup>	$\langle  L  \rangle = 0.48$ , $\langle L^2 \rangle = 0.31$	Xtriage
Estimated twinning fraction	No twinning to report.	Xtriage
$F_o, F_c$ correlation	0.93	EDS
Total number of atoms	7697	wwPDB-VP
Average B, all atoms (Å <sup>2</sup> )	46.0	wwPDB-VP

Xtriage's analysis on translational NCS is as follows: *The largest off-origin peak in the Patterson function is 3.80% of the height of the origin peak. No significant pseudotranslation is detected.*

<sup>1</sup>Intensities estimated from amplitudes.

<sup>2</sup>Theoretical values of  $\langle |L| \rangle$ ,  $\langle L^2 \rangle$  for acentric reflections are 0.5, 0.333 respectively for untwinned datasets, and 0.375, 0.2 for perfectly twinned datasets.

## 5 Model quality [i](#)

### 5.1 Standard geometry [i](#)

Bond lengths and bond angles in the following residue types are not validated in this section: GOL, EPE, FES, PLP

The Z score for a bond length (or angle) is the number of standard deviations the observed value is removed from the expected value. A bond length (or angle) with  $|Z| > 5$  is considered an outlier worth inspection. RMSZ is the root-mean-square of all Z scores of the bond lengths (or angles).

Mol	Chain	Bond lengths		Bond angles	
		RMSZ	$\# Z  > 5$	RMSZ	$\# Z  > 5$
1	A	0.75	0/2897	0.79	1/3928 (0.0%)
1	B	0.66	0/2767	0.72	0/3766
2	C	0.65	0/978	0.71	0/1324
2	D	0.56	0/937	0.68	1/1275 (0.1%)
All	All	0.68	0/7579	0.74	2/10293 (0.0%)

There are no bond length outliers.

All (2) bond angle outliers are listed below:

Mol	Chain	Res	Type	Atoms	Z	Observed(°)	Ideal(°)
1	A	288	LEU	CB-CG-CD1	-5.19	102.18	111.00
2	D	8	ASP	CB-CG-OD1	5.02	122.82	118.30

There are no chirality outliers.

There are no planarity outliers.

### 5.2 Too-close contacts [i](#)

In the following table, the Non-H and H(model) columns list the number of non-hydrogen atoms and hydrogen atoms in the chain respectively. The H(added) column lists the number of hydrogen atoms added and optimized by MolProbity. The Clashes column lists the number of clashes within the asymmetric unit, whereas Symm-Clashes lists symmetry related clashes.

Mol	Chain	Non-H	H(model)	H(added)	Clashes	Symm-Clashes
1	A	2847	0	2806	35	0
1	B	2723	0	2592	32	0
2	C	966	0	910	26	0
2	D	925	0	821	32	0
3	A	16	0	7	0	0

*Continued on next page...*

*Continued from previous page...*

Mol	Chain	Non-H	H(model)	H(added)	Clashes	Symm-Clashes
3	B	16	0	7	0	0
4	A	12	0	16	0	0
4	B	6	0	8	0	0
5	A	15	0	17	0	0
6	C	4	0	0	0	0
6	D	4	0	0	1	0
7	A	102	0	0	3	0
7	B	51	0	0	3	0
7	C	8	0	0	0	0
7	D	2	0	0	1	0
All	All	7697	0	7184	119	0

The all-atom clashscore is defined as the number of clashes found per 1000 atoms (including hydrogen atoms). The all-atom clashscore for this structure is 8.

All (119) close contacts within the same asymmetric unit are listed below, sorted by their clash magnitude.

Atom-1	Atom-2	Interatomic distance (Å)	Clash overlap (Å)
1:B:264:LEU:HD22	1:B:359:VAL:HG21	1.32	1.07
2:D:97:LYS:O	2:D:98:GLN:HB3	1.49	1.06
2:C:97:LYS:O	2:C:98:GLN:HB3	1.63	0.99
1:A:34:VAL:HG23	1:A:34:VAL:O	1.69	0.92
2:C:20:GLU:O	2:C:21:ASP:HB2	1.75	0.85
1:A:13:ASP:HB3	1:A:16:ILE:HD12	1.61	0.83
2:C:53:PHE:CE1	2:C:55:THR:HG22	2.22	0.75
2:C:27:THR:HG23	2:C:38:THR:HG22	1.69	0.73
1:B:300:GLU:OE1	1:B:321:CYS:HB2	1.89	0.71
1:A:162:GLU:O	1:A:165:ALA:HB2	1.92	0.68
2:D:10:PHE:HA	2:D:62:ILE:HD11	1.76	0.68
1:A:34:VAL:CG2	1:A:34:VAL:O	2.43	0.67
2:C:97:LYS:O	2:C:98:GLN:CB	2.42	0.66
2:C:53:PHE:CD1	2:C:55:THR:HG22	2.31	0.66
1:B:129:SER:HB3	7:B:536:HOH:O	1.95	0.66
2:D:37:MET:SD	2:D:65:SER:OG	2.55	0.65
2:D:43:VAL:HG12	2:D:47:ARG:H	1.61	0.65
2:D:97:LYS:O	2:D:98:GLN:CB	2.33	0.63
1:B:290:ASN:HB2	1:B:350:LEU:O	1.98	0.63
1:A:51:LYS:NZ	1:A:248:GLU:OE2	2.31	0.62
1:A:376:MET:HE1	2:C:62:ILE:HG23	1.81	0.62
1:A:35:HIS:CE1	1:A:37:TYR:HB2	2.35	0.62
1:B:310:MET:SD	2:D:11:GLN:HB3	2.40	0.61

*Continued on next page...*

*Continued from previous page...*

Atom-1	Atom-2	Interatomic distance (Å)	Clash overlap (Å)
1:B:264:LEU:CD2	1:B:359:VAL:HG21	2.21	0.61
1:B:120:VAL:HG12	1:B:126:VAL:HA	1.82	0.61
2:C:37:MET:HE3	2:C:105:LEU:HD12	1.84	0.60
2:C:20:GLU:O	2:C:21:ASP:CB	2.50	0.59
2:C:19:ILE:HG22	2:C:22:ALA:H	1.67	0.59
1:B:177:SER:O	1:B:180:GLN:HB2	2.03	0.58
2:D:10:PHE:HD1	2:D:62:ILE:HG12	1.70	0.57
1:B:69:ALA:HB2	1:B:196:SER:HB2	1.85	0.57
2:D:24:GLY:HA2	2:D:116:ASP:HB3	1.87	0.56
1:A:257:GLU:OE1	1:A:352:ARG:NE	2.34	0.56
1:B:13:ASP:HB3	1:B:16:ILE:HD12	1.88	0.56
1:B:212:ARG:HH11	1:B:212:ARG:HG3	1.70	0.56
1:A:21:LEU:HD23	1:A:24:MET:HE2	1.87	0.55
2:C:97:LYS:O	2:C:98:GLN:NE2	2.38	0.55
1:A:323:SER:O	1:A:324:LYS:CB	2.54	0.54
1:A:148:ASN:OD1	1:A:150:GLU:HB2	2.08	0.54
1:B:163:VAL:HG12	1:B:163:VAL:O	2.07	0.54
2:D:67:MET:HB2	2:D:92:LEU:HD21	1.90	0.54
2:C:37:MET:HB3	2:C:105:LEU:HD12	1.90	0.53
2:C:28:VAL:HG22	2:C:112:ARG:HD2	1.90	0.53
2:D:47:ARG:HA	2:D:76:THR:HA	1.90	0.53
2:D:77:ILE:O	2:D:81:LEU:HD13	2.10	0.52
1:A:372:ARG:NE	7:A:557:HOH:O	2.43	0.51
1:B:265:ARG:HD3	1:B:289:PRO:O	2.10	0.51
1:B:10:LYS:HD3	1:B:201:TYR:CE1	2.47	0.50
1:A:21:LEU:HD23	1:A:24:MET:CE	2.42	0.50
1:B:212:ARG:NH1	1:B:212:ARG:HG3	2.27	0.49
1:B:94:SER:HB3	1:B:97:GLU:OE2	2.12	0.49
1:A:295:ARG:HA	1:A:344:GLY:O	2.12	0.49
1:B:302:GLU:OE1	2:D:58:CYS:HB2	2.13	0.49
1:A:130:PHE:CE2	1:A:134:LYS:HG3	2.47	0.49
2:C:53:PHE:CE1	2:C:55:THR:CG2	2.95	0.49
1:A:283:HIS:HE2	1:A:286:LYS:HZ3	1.61	0.49
1:B:129:SER:CB	7:B:536:HOH:O	2.58	0.48
2:D:40:TYR:O	2:D:51:ILE:HG13	2.13	0.48
2:D:71:MET:HB3	2:D:83:ILE:HD13	1.96	0.48
2:C:53:PHE:HE1	2:C:55:THR:HG22	1.74	0.47
2:D:10:PHE:CD1	2:D:62:ILE:HG12	2.49	0.47
1:A:339:HIS:HB3	7:A:602:HOH:O	2.13	0.47
2:D:65:SER:O	2:D:69:THR:HG23	2.14	0.47
2:D:111:ARG:O	2:D:115:VAL:HG23	2.15	0.47

*Continued on next page...*

*Continued from previous page...*

Atom-1	Atom-2	Interatomic distance (Å)	Clash overlap (Å)
2:C:83:ILE:O	2:C:83:ILE:HG22	2.13	0.47
2:D:43:VAL:HG12	2:D:47:ARG:N	2.27	0.46
1:B:186:GLU:HA	1:B:186:GLU:OE1	2.16	0.46
1:A:93:VAL:O	1:A:117:TYR:HA	2.14	0.46
1:A:186:GLU:HA	1:A:186:GLU:OE1	2.15	0.46
1:A:69:ALA:HB2	1:A:196:SER:HB2	1.98	0.46
1:A:35:HIS:HE1	1:A:37:TYR:HB2	1.81	0.46
2:D:43:VAL:HG13	2:D:48:ILE:HD13	1.97	0.46
2:D:120:LYS:O	2:D:121:ASN:HB2	2.15	0.45
2:D:2:TYR:N	7:D:301:HOH:O	2.48	0.45
1:A:192:MET:HA	1:A:210:TRP:O	2.17	0.45
2:C:26:GLY:O	2:C:38:THR:HA	2.15	0.45
1:B:350:LEU:HA	1:B:354:ASN:OD1	2.17	0.45
2:D:116:ASP:C	2:D:118:PHE:H	2.20	0.45
1:B:267:ARG:NH2	1:B:356:ASP:OD1	2.50	0.44
2:C:98:GLN:HB3	2:C:98:GLN:HE21	1.58	0.44
2:C:2:TYR:HE2	2:C:99:LYS:HG3	1.83	0.44
2:D:115:VAL:O	2:D:115:VAL:HG12	2.18	0.43
1:A:110:LYS:NZ	7:A:579:HOH:O	2.50	0.43
1:A:16:ILE:HD13	1:A:201:TYR:O	2.18	0.43
1:A:30:ASN:HA	1:A:31:PRO:HD2	1.84	0.43
1:B:321:CYS:HB3	2:D:58:CYS:HB3	2.00	0.43
1:A:88:GLY:O	1:A:140:ILE:HD13	2.19	0.43
1:A:158:GLU:O	1:A:161:SER:HB3	2.18	0.42
1:B:348:LEU:HD13	1:B:362:LEU:HD11	2.01	0.42
2:D:28:VAL:HG22	2:D:112:ARG:HD2	2.00	0.42
2:C:27:THR:HA	2:C:37:MET:O	2.19	0.42
2:D:116:ASP:C	2:D:118:PHE:N	2.72	0.42
2:D:55:THR:HG21	2:D:62:ILE:HA	2.01	0.42
1:A:310:MET:SD	2:C:11:GLN:CG	3.08	0.42
1:B:158:GLU:HG3	1:B:188:ILE:HG22	2.01	0.42
1:B:145:GLN:OE1	1:B:148:ASN:HB2	2.20	0.42
2:D:101:HIS:NE2	6:D:201:FES:S2	2.93	0.42
2:C:5:LYS:HB2	2:C:92:LEU:O	2.19	0.42
1:A:245:LYS:HA	1:A:245:LYS:HD2	1.75	0.41
1:B:90:HIS:C	1:B:91:ILE:HG13	2.40	0.41
1:B:93:VAL:O	1:B:118:ILE:HG13	2.19	0.41
2:D:58:CYS:SG	2:D:60:ALA:HB3	2.60	0.41
1:A:102:ILE:O	1:A:105:ALA:HB3	2.20	0.41
1:B:101:VAL:C	1:B:104:PRO:HD2	2.40	0.41
1:A:233:GLY:O	1:A:234:SER:C	2.59	0.41

*Continued on next page...*

Continued from previous page...

Atom-1	Atom-2	Interatomic distance (Å)	Clash overlap (Å)
2:C:44:LYS:HB2	2:C:49:GLU:CG	2.50	0.41
2:D:98:GLN:O	2:D:98:GLN:HG2	2.19	0.41
1:A:376:MET:HE3	2:C:53:PHE:CE1	2.56	0.41
1:B:366:LEU:HB3	1:B:367:PRO:HD3	2.03	0.41
1:A:250:THR:O	1:A:254:TRP:HB3	2.21	0.41
2:D:62:ILE:HG13	2:D:63:ALA:N	2.35	0.41
1:B:86:ARG:NH1	7:B:531:HOH:O	2.34	0.40
2:C:30:ASN:HB2	2:C:105:LEU:HD23	2.02	0.40
2:C:9:HIS:O	2:C:13:PRO:HA	2.22	0.40
1:A:155:GLN:HA	1:A:156:PRO:HD3	1.75	0.40
1:B:265:ARG:O	1:B:269:ILE:HG13	2.21	0.40
1:B:272:VAL:O	1:B:275:ILE:HD12	2.22	0.40
2:D:80:ALA:HA	2:D:83:ILE:HG13	2.03	0.40
1:A:213:LYS:O	1:A:214:GLU:CB	2.69	0.40

There are no symmetry-related clashes.

## 5.3 Torsion angles [i](#)

### 5.3.1 Protein backbone [i](#)

In the following table, the Percentiles column shows the percent Ramachandran outliers of the chain as a percentile score with respect to all X-ray entries followed by that with respect to entries of similar resolution.

The Analysed column shows the number of residues for which the backbone conformation was analysed, and the total number of residues.

Mol	Chain	Analysed	Favoured	Allowed	Outliers	Percentiles	
1	A	378/382 (99%)	360 (95%)	16 (4%)	2 (0%)	29	47
1	B	375/382 (98%)	362 (96%)	13 (4%)	0	100	100
2	C	136/153 (89%)	121 (89%)	12 (9%)	3 (2%)	6	10
2	D	136/153 (89%)	119 (88%)	13 (10%)	4 (3%)	4	6
All	All	1025/1070 (96%)	962 (94%)	54 (5%)	9 (1%)	17	30

All (9) Ramachandran outliers are listed below:

Mol	Chain	Res	Type
2	C	22	ALA

Continued on next page...

*Continued from previous page...*

Mol	Chain	Res	Type
2	D	23	ASP
2	D	121	ASN
1	A	324	LYS
2	C	21	ASP
2	C	98	GLN
2	D	98	GLN
2	D	21	ASP
1	A	6	TYR

### 5.3.2 Protein sidechains ⓘ

In the following table, the Percentiles column shows the percent sidechain outliers of the chain as a percentile score with respect to all X-ray entries followed by that with respect to entries of similar resolution.

The Analysed column shows the number of residues for which the sidechain conformation was analysed, and the total number of residues.

Mol	Chain	Analysed	Rotameric	Outliers	Percentiles	
1	A	294/316 (93%)	283 (96%)	11 (4%)	34	57
1	B	262/316 (83%)	252 (96%)	10 (4%)	33	56
2	C	86/124 (69%)	77 (90%)	9 (10%)	7	12
2	D	75/124 (60%)	66 (88%)	9 (12%)	5	9
All	All	717/880 (82%)	678 (95%)	39 (5%)	22	40

All (39) residues with a non-rotameric sidechain are listed below:

Mol	Chain	Res	Type
1	A	7	THR
1	A	40	LYS
1	A	87	LYS
1	A	94	SER
1	A	129	SER
1	A	199	ASP
1	A	243	PHE
1	A	245	LYS
1	A	286	LYS
1	A	310	MET
1	A	363	LEU
1	B	54	LYS
1	B	86	ARG

*Continued on next page...*

*Continued from previous page...*

Mol	Chain	Res	Type
1	B	94	SER
1	B	125	GLU
1	B	243	PHE
1	B	255	ARG
1	B	306	LEU
1	B	316	SER
1	B	317	THR
1	B	362	LEU
2	C	14	ARG
2	C	37	MET
2	C	38	THR
2	C	55	THR
2	C	78	GLU
2	C	98	GLN
2	C	105	LEU
2	C	125	ASP
2	C	132	LEU
2	D	36	LEU
2	D	43	VAL
2	D	62	ILE
2	D	71	MET
2	D	73	LYS
2	D	75	LYS
2	D	78	GLU
2	D	98	GLN
2	D	105	LEU

Some sidechains can be flipped to improve hydrogen bonding and reduce clashes. All (2) such sidechains are listed below:

Mol	Chain	Res	Type
1	A	236	ASN
2	C	98	GLN

### 5.3.3 RNA ⓘ

There are no RNA molecules in this entry.

## 5.4 Non-standard residues in protein, DNA, RNA chains ⓘ

There are no non-standard protein/DNA/RNA residues in this entry.



## 5.5 Carbohydrates [i](#)

There are no carbohydrates in this entry.

## 5.6 Ligand geometry [i](#)

8 ligands are modelled in this entry.

In the following table, the Counts columns list the number of bonds (or angles) for which Mogul statistics could be retrieved, the number of bonds (or angles) that are observed in the model and the number of bonds (or angles) that are defined in the Chemical Component Dictionary. The Link column lists molecule types, if any, to which the group is linked. The Z score for a bond length (or angle) is the number of standard deviations the observed value is removed from the expected value. A bond length (or angle) with  $|Z| > 2$  is considered an outlier worth inspection. RMSZ is the root-mean-square of all Z scores of the bond lengths (or angles).

Mol	Type	Chain	Res	Link	Bond lengths			Bond angles		
					Counts	RMSZ	# Z  > 2	Counts	RMSZ	# Z  > 2
6	FES	D	201	1,2	0,4,4	0.00	-	-		
4	GOL	A	402	-	5,5,5	0.26	0	5,5,5	0.60	0
3	PLP	B	401	-	16,16,16	1.71	3 (18%)	20,23,23	1.52	7 (35%)
3	PLP	A	401	-	16,16,16	0.80	0	20,23,23	1.27	2 (10%)
5	EPE	A	404	-	15,15,15	0.80	1 (6%)	18,20,20	1.99	4 (22%)
6	FES	C	201	1,2	0,4,4	0.00	-	-		
4	GOL	A	403	-	5,5,5	0.48	0	5,5,5	0.64	0
4	GOL	B	402	-	5,5,5	0.36	0	5,5,5	0.90	0

In the following table, the Chirals column lists the number of chiral outliers, the number of chiral centers analysed, the number of these observed in the model and the number defined in the Chemical Component Dictionary. Similar counts are reported in the Torsion and Rings columns. '-' means no outliers of that kind were identified.

Mol	Type	Chain	Res	Link	Chirals	Torsions	Rings
6	FES	D	201	1,2	-	-	0/1/1/1
4	GOL	A	402	-	-	4/4/4/4	-
3	PLP	B	401	-	-	2/8/8/8	0/1/1/1
3	PLP	A	401	-	-	2/8/8/8	0/1/1/1
5	EPE	A	404	-	-	1/9/19/19	0/1/1/1
6	FES	C	201	1,2	-	-	0/1/1/1
4	GOL	A	403	-	-	4/4/4/4	-
4	GOL	B	402	-	-	2/4/4/4	-

All (4) bond length outliers are listed below:

Mol	Chain	Res	Type	Atoms	Z	Observed(Å)	Ideal(Å)
3	B	401	PLP	C3-C2	-4.72	1.36	1.40
3	B	401	PLP	C4-C3	-3.66	1.35	1.40
5	A	404	EPE	C10-S	2.67	1.81	1.77
3	B	401	PLP	C4-C5	-2.51	1.38	1.42

All (13) bond angle outliers are listed below:

Mol	Chain	Res	Type	Atoms	Z	Observed(°)	Ideal(°)
5	A	404	EPE	C5-N4-C3	5.40	120.97	108.83
5	A	404	EPE	O2S-S-C10	3.06	110.59	106.92
5	A	404	EPE	C7-N4-C5	2.91	118.67	111.23
3	B	401	PLP	C2A-C2-C3	-2.74	117.51	120.89
5	A	404	EPE	O1S-S-C10	2.71	110.17	106.92
3	A	401	PLP	O4A-C4A-C4	-2.64	119.15	124.91
3	B	401	PLP	O4A-C4A-C4	-2.36	119.77	124.91
3	B	401	PLP	C3-C4-C4A	-2.27	116.68	119.90
3	B	401	PLP	C5-C6-N1	-2.23	120.10	123.82
3	B	401	PLP	O2P-P-O1P	2.13	119.02	110.68
3	B	401	PLP	C2A-C2-N1	2.11	121.79	117.67
3	A	401	PLP	C5-C6-N1	-2.05	120.40	123.82
3	B	401	PLP	O3P-P-O4P	-2.03	101.32	106.73

There are no chirality outliers.

All (15) torsion outliers are listed below:

Mol	Chain	Res	Type	Atoms
4	A	402	GOL	O1-C1-C2-C3
3	B	401	PLP	C3-C4-C4A-O4A
3	B	401	PLP	C5-C4-C4A-O4A
4	A	402	GOL	O1-C1-C2-O2
4	A	403	GOL	O1-C1-C2-C3
4	B	402	GOL	C1-C2-C3-O3
3	A	401	PLP	C5-C4-C4A-O4A
3	A	401	PLP	C3-C4-C4A-O4A
4	B	402	GOL	O2-C2-C3-O3
5	A	404	EPE	N4-C7-C8-O8
4	A	403	GOL	O1-C1-C2-O2
4	A	402	GOL	O2-C2-C3-O3
4	A	403	GOL	O2-C2-C3-O3
4	A	402	GOL	C1-C2-C3-O3
4	A	403	GOL	C1-C2-C3-O3

There are no ring outliers.

1 monomer is involved in 1 short contact:

Mol	Chain	Res	Type	Clashes	Symm-Clashes
6	D	201	FES	1	0

## 5.7 Other polymers [i](#)

There are no such residues in this entry.

## 5.8 Polymer linkage issues [i](#)

There are no chain breaks in this entry.

## 6 Fit of model and data ⓘ

### 6.1 Protein, DNA and RNA chains ⓘ

In the following table, the column labelled ‘#RSRZ> 2’ contains the number (and percentage) of RSRZ outliers, followed by percent RSRZ outliers for the chain as percentile scores relative to all X-ray entries and entries of similar resolution. The OWAB column contains the minimum, median, 95<sup>th</sup> percentile and maximum values of the occupancy-weighted average B-factor per residue. The column labelled ‘Q< 0.9’ lists the number of (and percentage) of residues with an average occupancy less than 0.9.

Mol	Chain	Analysed	<RSRZ>	#RSRZ>2	OWAB(Å <sup>2</sup> )	Q<0.9
1	A	379/382 (99%)	-0.08	1 (0%) 94 94	24, 36, 47, 58	0
1	B	377/382 (98%)	0.01	2 (0%) 91 92	30, 45, 61, 70	1 (0%)
2	C	138/153 (90%)	0.24	2 (1%) 75 78	32, 47, 66, 68	0
2	D	138/153 (90%)	0.87	21 (15%) 2 2	46, 76, 106, 108	0
All	All	1032/1070 (96%)	0.12	26 (2%) 57 61	24, 43, 82, 108	1 (0%)

All (26) RSRZ outliers are listed below:

Mol	Chain	Res	Type	RSRZ
2	D	110	LEU	5.2
2	D	109	ALA	5.0
2	C	2	TYR	4.0
2	D	31	PRO	4.0
2	D	46	ASN	3.4
2	D	136	LEU	3.3
2	D	41	ILE	3.2
2	D	129	GLU	3.1
2	D	77	ILE	3.0
2	D	127	ILE	2.9
2	D	135	GLU	2.9
2	D	131	GLY	2.7
2	D	45	ASP	2.7
2	D	19	ILE	2.6
2	D	130	LEU	2.5
2	D	114	ILE	2.5
2	D	107	ALA	2.4
2	C	10	PHE	2.3
2	D	118	PHE	2.3
2	D	125	ASP	2.2
1	B	137	ASP	2.2

*Continued on next page...*

*Continued from previous page...*

Mol	Chain	Res	Type	RSRZ
2	D	132	LEU	2.1
1	B	336	GLY	2.1
2	D	25	VAL	2.1
1	A	2	ALA	2.0
2	D	43	VAL	2.0

## 6.2 Non-standard residues in protein, DNA, RNA chains [i](#)

There are no non-standard protein/DNA/RNA residues in this entry.

## 6.3 Carbohydrates [i](#)

There are no carbohydrates in this entry.

## 6.4 Ligands [i](#)

In the following table, the Atoms column lists the number of modelled atoms in the group and the number defined in the chemical component dictionary. The B-factors column lists the minimum, median, 95<sup>th</sup> percentile and maximum values of B factors of atoms in the group. The column labelled 'Q< 0.9' lists the number of atoms with occupancy less than 0.9.

Mol	Type	Chain	Res	Atoms	RSCC	RSR	B-factors( $\text{\AA}^2$ )	Q<0.9
4	GOL	B	402	6/6	0.88	0.21	51,54,54,55	0
4	GOL	A	403	6/6	0.90	0.16	51,56,56,57	0
4	GOL	A	402	6/6	0.94	0.23	35,41,42,44	0
6	FES	D	201	4/4	0.96	0.08	59,61,63,64	0
3	PLP	B	401	16/16	0.97	0.16	24,31,34,35	16
5	EPE	A	404	15/15	0.97	0.17	32,39,51,53	0
3	PLP	A	401	16/16	0.98	0.17	23,30,34,36	0
6	FES	C	201	4/4	0.98	0.10	34,37,37,43	0

## 6.5 Other polymers [i](#)

There are no such residues in this entry.