



Full wwPDB X-ray Structure Validation Report ⓘ

Oct 10, 2021 – 02:40 PM EDT

PDB ID : 3ECK
Title : Structure of E323L Homoprotocatechuate 2,3-dioxygenase from *Brevibacterium fuscum* in complex with putative O-O bond cleavage intermediate formed via in crystallo reaction with 4-sulfonyl catechol at low oxygen concentrations
Authors : Kovaleva, E.G.; Lipscomb, J.D.
Deposited on : 2008-08-31
Resolution : 1.60 Å(reported)

This is a Full wwPDB X-ray Structure Validation Report for a publicly released PDB entry.

We welcome your comments at validation@mail.wwpdb.org

A user guide is available at

<https://www.wwpdb.org/validation/2017/XrayValidationReportHelp>

with specific help available everywhere you see the ⓘ symbol.

The following versions of software and data (see [references ⓘ](#)) were used in the production of this report:

MolProbity	:	4.02b-467
Mogul	:	1.8.5 (274361), CSD as541be (2020)
Xtriage (Phenix)	:	1.13
EDS	:	2.23.2
Percentile statistics	:	20191225.v01 (using entries in the PDB archive December 25th 2019)
Refmac	:	5.8.0158
CCP4	:	7.0.044 (Gargrove)
Ideal geometry (proteins)	:	Engh & Huber (2001)
Ideal geometry (DNA, RNA)	:	Parkinson et al. (1996)
Validation Pipeline (wwPDB-VP)	:	2.23.2

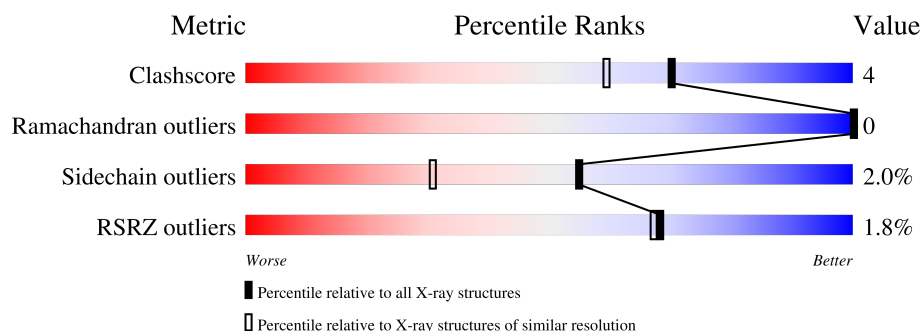
1 Overall quality at a glance

The following experimental techniques were used to determine the structure:

X-RAY DIFFRACTION

The reported resolution of this entry is 1.60 Å.

Percentile scores (ranging between 0-100) for global validation metrics of the entry are shown in the following graphic. The table shows the number of entries on which the scores are based.



Metric	Whole archive (#Entries)	Similar resolution (#Entries, resolution range(Å))
Clashscore	141614	3665 (1.60-1.60)
Ramachandran outliers	138981	3564 (1.60-1.60)
Sidechain outliers	138945	3563 (1.60-1.60)
RSRZ outliers	127900	3321 (1.60-1.60)

The table below summarises the geometric issues observed across the polymeric chains and their fit to the electron density. The red, orange, yellow and green segments of the lower bar indicate the fraction of residues that contain outliers for ≥ 3 , 2, 1 and 0 types of geometric quality criteria respectively. A grey segment represents the fraction of residues that are not modelled. The numeric value for each fraction is indicated below the corresponding segment, with a dot representing fractions $\leq 5\%$. The upper red bar (where present) indicates the fraction of residues that have poor fit to the electron density. The numeric value is given above the bar.

Mol	Chain	Length	Quality of chain
1	A	365	
1	B	365	
1	C	365	
1	D	365	

2 Entry composition

There are 7 unique types of molecules in this entry. The entry contains 13321 atoms, of which 0 are hydrogens and 0 are deuteriums.

In the tables below, the ZeroOcc column contains the number of atoms modelled with zero occupancy, the AltConf column contains the number of residues with at least one atom in alternate conformation and the Trace column contains the number of residues modelled with at most 2 atoms.

- Molecule 1 is a protein called PROTEIN (Homoproteocatechuate 2,3-dioxygenase).

Mol	Chain	Residues	Atoms					ZeroOcc	AltConf	Trace
1	A	359	Total	C	N	O	S	0	8	0
			2956	1864	519	566	7			
1	B	359	Total	C	N	O	S	0	14	0
			2981	1883	520	570	8			
1	C	359	Total	C	N	O	S	0	11	0
			2959	1869	519	563	8			
1	D	359	Total	C	N	O	S	0	12	0
			2961	1870	519	563	9			

There are 4 discrepancies between the modelled and reference sequences:

Chain	Residue	Modelled	Actual	Comment	Reference
A	323	LEU	GLU	engineered mutation	UNP Q45135
B	323	LEU	GLU	engineered mutation	UNP Q45135
C	323	LEU	GLU	engineered mutation	UNP Q45135
D	323	LEU	GLU	engineered mutation	UNP Q45135

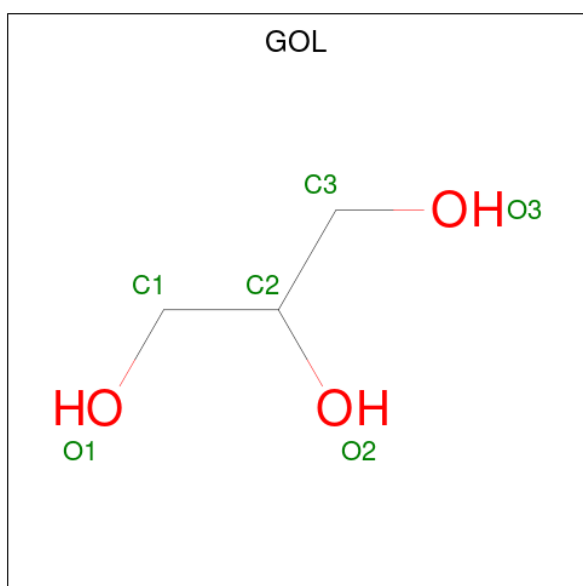
- Molecule 2 is FE (II) ION (three-letter code: FE2) (formula: Fe).

Mol	Chain	Residues	Atoms		ZeroOcc	AltConf
2	A	1	Total	Fe	0	0
			1	1		
2	B	1	Total	Fe	0	0
			1	1		
2	C	1	Total	Fe	0	0
			1	1		
2	D	1	Total	Fe	0	0
			1	1		

- Molecule 3 is CHLORIDE ION (three-letter code: CL) (formula: Cl).

Mol	Chain	Residues	Atoms	ZeroOcc	AltConf
3	A	1	Total Cl 1 1	0	0
3	B	1	Total Cl 1 1	0	0
3	C	1	Total Cl 1 1	0	0
3	D	1	Total Cl 1 1	0	0

- Molecule 4 is GLYCEROL (three-letter code: GOL) (formula: $C_3H_8O_3$).

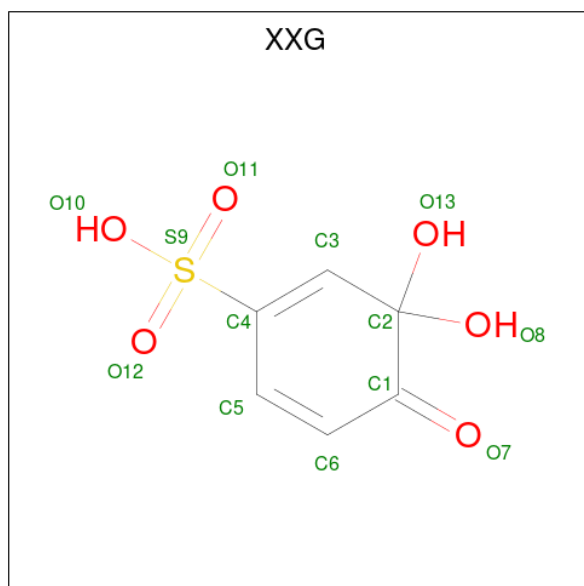


Mol	Chain	Residues	Atoms	ZeroOcc	AltConf
4	A	1	Total C O 6 3 3	0	0
4	B	1	Total C O 6 3 3	0	0
4	C	1	Total C O 6 3 3	0	0
4	C	1	Total C O 6 3 3	0	0
4	D	1	Total C O 6 3 3	0	0
4	D	1	Total C O 6 3 3	0	0

- Molecule 5 is CALCIUM ION (three-letter code: CA) (formula: Ca).

Mol	Chain	Residues	Atoms		ZeroOcc	AltConf
5	B	1	Total	Ca	0	0
			1	1		

- Molecule 6 is 3,3-dihydroxy-4-oxocyclohexa-1,5-diene-1-sulfonic acid (three-letter code: XXG) (formula: C₆H₆O₆S).



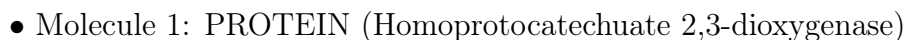
Mol	Chain	Residues	Atoms				ZeroOcc	AltConf
6	C	1	Total	C	O	S	0	0
			13	6	6	1		
6	D	1	Total	C	O	S	0	0
			13	6	6	1		

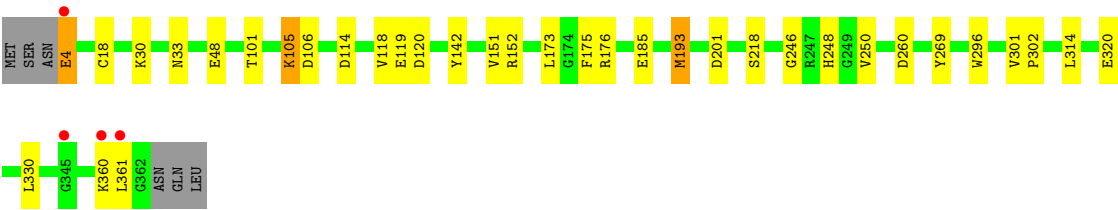
- Molecule 7 is water.

Mol	Chain	Residues	Atoms		ZeroOcc	AltConf
7	A	352	Total	O	0	1
			352	352		
7	B	363	Total	O	0	1
			363	363		
7	C	325	Total	O	0	0
			325	325		
7	D	353	Total	O	0	0
			353	353		

i

- Molecule 1: PROTEIN (Homoprotocatechuate 2,3-dioxygenase)





4 Data and refinement statistics

Property	Value	Source
Space group	P 21 21 2	Depositor
Cell constants a, b, c, α , β , γ	110.73Å 163.18Å 101.37Å 90.00° 90.00° 90.00°	Depositor
Resolution (Å)	24.20 – 1.60 24.20 – 1.60	Depositor EDS
% Data completeness (in resolution range)	92.4 (24.20-1.60) 92.4 (24.20-1.60)	Depositor EDS
R_{merge}	0.05	Depositor
R_{sym}	0.05	Depositor
$\langle I/\sigma(I) \rangle$ ¹	3.20 (at 1.60Å)	Xtriage
Refinement program	REFMAC 5.2.0019	Depositor
R, R_{free}	0.174 , 0.198 0.173 , (Not available)	Depositor DCC
R_{free} test set	No test flags present.	wwPDB-VP
Wilson B-factor (Å ²)	18.2	Xtriage
Anisotropy	0.057	Xtriage
Bulk solvent k_{sol} (e/Å ³), B_{sol} (Å ²)	0.37 , 48.2	EDS
L-test for twinning ²	$\langle L \rangle = 0.49$, $\langle L^2 \rangle = 0.33$	Xtriage
Estimated twinning fraction	No twinning to report.	Xtriage
F_o, F_c correlation	0.97	EDS
Total number of atoms	13321	wwPDB-VP
Average B, all atoms (Å ²)	19.0	wwPDB-VP

Xtriage's analysis on translational NCS is as follows: *The largest off-origin peak in the Patterson function is 4.29% of the height of the origin peak. No significant pseudotranslation is detected.*

¹Intensities estimated from amplitudes.

²Theoretical values of $\langle |L| \rangle$, $\langle L^2 \rangle$ for acentric reflections are 0.5, 0.333 respectively for untwinned datasets, and 0.375, 0.2 for perfectly twinned datasets.

5 Model quality [i](#)

5.1 Standard geometry [i](#)

Bond lengths and bond angles in the following residue types are not validated in this section: FE2, GOL, XXG, CA, CL

The Z score for a bond length (or angle) is the number of standard deviations the observed value is removed from the expected value. A bond length (or angle) with $|Z| > 5$ is considered an outlier worth inspection. RMSZ is the root-mean-square of all Z scores of the bond lengths (or angles).

Mol	Chain	Bond lengths		Bond angles	
		RMSZ	$\# Z > 5$	RMSZ	$\# Z > 5$
1	A	0.55	0/3041	0.66	0/4129
1	B	0.58	0/3084	0.66	0/4186
1	C	0.56	0/3053	0.66	0/4146
1	D	0.60	0/3058	0.68	0/4151
All	All	0.57	0/12236	0.66	0/16612

There are no bond length outliers.

There are no bond angle outliers.

There are no chirality outliers.

There are no planarity outliers.

5.2 Too-close contacts [i](#)

In the following table, the Non-H and H(model) columns list the number of non-hydrogen atoms and hydrogen atoms in the chain respectively. The H(added) column lists the number of hydrogen atoms added and optimized by MolProbity. The Clashes column lists the number of clashes within the asymmetric unit, whereas Symm-Clashes lists symmetry-related clashes.

Mol	Chain	Non-H	H(model)	H(added)	Clashes	Symm-Clashes
1	A	2956	0	2809	24	0
1	B	2981	0	2852	19	0
1	C	2959	0	2828	26	0
1	D	2961	0	2831	24	0
2	A	1	0	0	0	0
2	B	1	0	0	0	0
2	C	1	0	0	0	0
2	D	1	0	0	0	0
3	A	1	0	0	0	0

Continued on next page...

Continued from previous page...

Mol	Chain	Non-H	H(model)	H(added)	Clashes	Symm-Clashes
3	B	1	0	0	0	0
3	C	1	0	0	0	0
3	D	1	0	0	0	0
4	A	6	0	8	0	0
4	B	6	0	8	0	0
4	C	12	0	16	1	0
4	D	12	0	16	0	0
5	B	1	0	0	0	0
6	C	13	0	4	0	0
6	D	13	0	4	1	0
7	A	352	0	0	6	0
7	B	363	0	0	1	0
7	C	325	0	0	5	0
7	D	353	0	0	6	0
All	All	13321	0	11376	85	0

The all-atom clashscore is defined as the number of clashes found per 1000 atoms (including hydrogen atoms). The all-atom clashscore for this structure is 4.

All (85) close contacts within the same asymmetric unit are listed below, sorted by their clash magnitude.

Atom-1	Atom-2	Interatomic distance (Å)	Clash overlap (Å)
1:A:357:LYS:O	1:C:301[B]:VAL:HG23	1.66	0.94
1:D:301:VAL:HG13	7:D:795:HOH:O	1.73	0.87
1:A:360:LYS:HG3	1:C:362:GLY:HA2	1.61	0.81
1:B:74:LEU:HD21	1:B:77[A]:MET:HG3	1.67	0.76
1:A:357:LYS:O	1:C:301[B]:VAL:CG2	2.33	0.76
1:D:18[B]:CYS:SG	1:D:201:ASP:O	2.46	0.73
1:D:185:GLU:HG2	7:D:839:HOH:O	1.89	0.70
1:A:282[A]:THR:HG23	7:A:840:HOH:O	1.92	0.68
1:C:302:PRO:HG3	1:C:361:LEU:HD22	1.76	0.68
1:A:282[A]:THR:CG2	7:A:840:HOH:O	2.42	0.66
1:D:106:ASP:O	7:D:821:HOH:O	2.15	0.64
1:D:105:LYS:HE2	1:D:114:ASP:OD1	2.00	0.62
1:C:301[A]:VAL:HG23	7:C:788:HOH:O	2.00	0.62
1:A:193:MET:HE2	7:A:843:HOH:O	1.99	0.62
1:A:74:LEU:HD21	1:A:77:MET:HG3	1.81	0.61
1:D:101:THR:HG22	1:D:118:VAL:HG12	1.82	0.61
1:A:30:LYS:HD3	7:A:835:HOH:O	1.99	0.60
1:A:101:THR:HG22	1:A:118:VAL:HG12	1.83	0.60
1:B:362:GLY:HA2	1:D:360:LYS:HG3	1.83	0.60

Continued on next page...

Continued from previous page...

Atom-1	Atom-2	Interatomic distance (Å)	Clash overlap (Å)
1:C:176:ARG:HD3	7:C:810:HOH:O	2.00	0.59
1:D:48:GLU:H	1:D:48:GLU:CD	2.06	0.58
1:C:48:GLU:CD	1:C:48:GLU:H	2.07	0.57
1:A:218:SER:HA	1:A:269:TYR:O	2.04	0.57
1:B:218[B]:SER:HA	1:B:269:TYR:O	2.04	0.57
1:C:145:TYR:OH	1:C:220:HIS:HD2	1.86	0.57
1:B:77[B]:MET:HE3	1:B:124:PHE:CD1	2.40	0.57
1:B:218[A]:SER:HA	1:B:269:TYR:O	2.05	0.56
1:A:354:GLN:NE2	7:A:592:HOH:O	2.32	0.55
1:C:248:HIS:HB3	1:C:250:VAL:O	2.06	0.55
1:C:101:THR:HG22	1:C:118:VAL:HG12	1.89	0.54
1:D:218[B]:SER:HA	1:D:269:TYR:O	2.07	0.54
1:D:320:GLU:HG3	7:D:669:HOH:O	2.08	0.53
1:B:101:THR:HG22	1:B:118:VAL:HG12	1.90	0.52
1:A:8:PRO:HG3	1:A:97:LEU:HD13	1.92	0.52
1:C:218[B]:SER:HA	1:C:269:TYR:O	2.10	0.52
1:C:246:GLY:HA2	1:C:296:TRP:CZ3	2.44	0.52
1:C:176:ARG:HH11	1:C:278:PRO:HA	1.75	0.51
1:A:282[B]:THR:HG23	7:A:574:HOH:O	2.10	0.51
1:C:218[A]:SER:HA	1:C:269:TYR:O	2.09	0.51
1:D:218[A]:SER:HA	1:D:269:TYR:O	2.12	0.50
1:A:48[A]:GLU:H	1:A:48[A]:GLU:CD	2.14	0.50
1:C:4[B]:GLU:OE2	1:C:165:ARG:NE	2.44	0.49
1:B:48[B]:GLU:H	1:B:48[B]:GLU:CD	2.16	0.48
1:A:83:THR:OG1	1:A:85:GLU:HG2	2.14	0.47
1:B:142:TYR:CG	1:C:230:ASP:HB3	2.49	0.47
1:C:175:PHE:HB3	1:C:193:MET:HB2	1.96	0.47
1:D:4[B]:GLU:HG2	1:D:4[B]:GLU:O	2.13	0.47
1:B:246:GLY:HA2	1:B:296:TRP:CZ3	2.49	0.47
1:D:248:HIS:HB3	1:D:250:VAL:O	2.15	0.47
1:B:282[B]:THR:HG22	7:B:744:HOH:O	2.15	0.47
1:B:176:ARG:NH1	1:B:278:PRO:O	2.48	0.47
1:D:246:GLY:HA2	1:D:296:TRP:CZ3	2.50	0.47
1:D:151:VAL:HG23	1:D:152[B]:ARG:HG3	1.97	0.46
1:A:230:ASP:HB3	1:D:142:TYR:CG	2.50	0.46
1:C:30:LYS:HD3	7:C:799:HOH:O	2.15	0.46
1:A:77:MET:HE2	1:A:156:PHE:CD2	2.51	0.46
1:B:302:PRO:HG3	1:B:361:LEU:HD23	1.97	0.46
1:B:248:HIS:HB3	1:B:250:VAL:O	2.16	0.46
1:C:57:GLU:OE2	1:C:220:HIS:HE1	1.98	0.45
1:A:248:HIS:HB3	1:A:250:VAL:O	2.16	0.45

Continued on next page...

Continued from previous page...

Atom-1	Atom-2	Interatomic distance (Å)	Clash overlap (Å)
1:D:330:LEU:HD23	1:D:330:LEU:C	2.37	0.45
1:A:101:THR:HB	1:A:116:LEU:HD11	1.97	0.45
1:C:176:ARG:HD2	7:C:628:HOH:O	2.16	0.45
1:B:330:LEU:C	1:B:330:LEU:HD23	2.38	0.44
1:B:230:ASP:HB3	1:C:142:TYR:CG	2.52	0.44
1:A:246:GLY:HA2	1:A:296:TRP:CZ3	2.53	0.43
1:C:147:ALA:CB	1:C:227:GLN:HG2	2.47	0.43
1:A:250:VAL:HG22	1:A:285:TRP:CD1	2.53	0.43
1:B:119:GLU:HG3	1:B:314:LEU:HG	1.99	0.43
1:D:250:VAL:O	6:D:502:XXG:H5	2.19	0.43
1:A:77:MET:HE2	1:A:156:PHE:CG	2.54	0.42
1:B:229:CYS:HB3	1:D:296:TRP:CD1	2.54	0.42
1:D:33[A]:ASN:ND2	7:D:642:HOH:O	2.52	0.42
1:D:30:LYS:HD3	7:D:843:HOH:O	2.20	0.42
1:C:101:THR:HB	1:C:116:LEU:HD11	2.02	0.41
1:D:119:GLU:HG3	1:D:314:LEU:HG	2.01	0.41
4:C:504:GOL:H12	7:C:795:HOH:O	2.19	0.41
1:B:151:VAL:HG11	1:B:220:HIS:CE1	2.55	0.41
1:A:86:ASP:HA	1:A:89:LYS:HD3	2.02	0.41
1:D:302:PRO:HG3	1:D:361:LEU:HD23	2.01	0.41
1:D:175:PHE:HB3	1:D:193:MET:HB2	2.02	0.41
1:B:250:VAL:HG22	1:B:285:TRP:CD1	2.56	0.40
1:C:147:ALA:HB3	1:C:227:GLN:HG2	2.04	0.40
1:A:362:GLY:HA2	1:C:360:LYS:HG3	2.03	0.40
1:C:124:PHE:CZ	1:C:158:GLN:HB3	2.56	0.40

There are no symmetry-related clashes.

5.3 Torsion angles [i](#)

5.3.1 Protein backbone [i](#)

In the following table, the Percentiles column shows the percent Ramachandran outliers of the chain as a percentile score with respect to all X-ray entries followed by that with respect to entries of similar resolution.

The Analysed column shows the number of residues for which the backbone conformation was analysed, and the total number of residues.

Mol	Chain	Analysed	Favoured	Allowed	Outliers	Percentiles	
1	A	365/365 (100%)	357 (98%)	8 (2%)	0	100	100

Continued on next page...

Continued from previous page...

Mol	Chain	Analysed	Favoured	Allowed	Outliers	Percentiles	
1	B	371/365 (102%)	362 (98%)	9 (2%)	0	100	100
1	C	367/365 (100%)	358 (98%)	9 (2%)	0	100	100
1	D	368/365 (101%)	358 (97%)	10 (3%)	0	100	100
All	All	1471/1460 (101%)	1435 (98%)	36 (2%)	0	100	100

There are no Ramachandran outliers to report.

5.3.2 Protein sidechains ⓘ

In the following table, the Percentiles column shows the percent sidechain outliers of the chain as a percentile score with respect to all X-ray entries followed by that with respect to entries of similar resolution.

The Analysed column shows the number of residues for which the sidechain conformation was analysed, and the total number of residues.

Mol	Chain	Analysed	Rotameric	Outliers	Percentiles	
1	A	315/313 (101%)	305 (97%)	10 (3%)	39	15
1	B	321/313 (103%)	318 (99%)	3 (1%)	78	65
1	C	317/313 (101%)	312 (98%)	5 (2%)	62	41
1	D	318/313 (102%)	311 (98%)	7 (2%)	52	27
All	All	1271/1252 (102%)	1246 (98%)	25 (2%)	55	31

All (25) residues with a non-rotameric sidechain are listed below:

Mol	Chain	Res	Type
1	A	48[A]	GLU
1	A	48[B]	GLU
1	A	68	LYS
1	A	85	GLU
1	A	97	LEU
1	A	105	LYS
1	A	120	ASP
1	A	193	MET
1	A	260	ASP
1	A	321	ILE
1	B	120	ASP
1	B	193	MET
1	B	260	ASP

Continued on next page...

Continued from previous page...

Mol	Chain	Res	Type
1	C	105	LYS
1	C	120	ASP
1	C	193	MET
1	C	260	ASP
1	C	314	LEU
1	D	4[B]	GLU
1	D	105	LYS
1	D	120	ASP
1	D	173	LEU
1	D	176	ARG
1	D	193	MET
1	D	260	ASP

Sometimes sidechains can be flipped to improve hydrogen bonding and reduce clashes. All (3) such sidechains are listed below:

Mol	Chain	Res	Type
1	A	95	GLN
1	C	95	GLN
1	C	220	HIS

5.3.3 RNA [i](#)

There are no RNA molecules in this entry.

5.4 Non-standard residues in protein, DNA, RNA chains [i](#)

There are no non-standard protein/DNA/RNA residues in this entry.

5.5 Carbohydrates [i](#)

There are no monosaccharides in this entry.

5.6 Ligand geometry [i](#)

Of 17 ligands modelled in this entry, 9 are monoatomic - leaving 8 for Mogul analysis.

In the following table, the Counts columns list the number of bonds (or angles) for which Mogul statistics could be retrieved, the number of bonds (or angles) that are observed in the model and the number of bonds (or angles) that are defined in the Chemical Component Dictionary. The

Link column lists molecule types, if any, to which the group is linked. The Z score for a bond length (or angle) is the number of standard deviations the observed value is removed from the expected value. A bond length (or angle) with $|Z| > 2$ is considered an outlier worth inspection. RMSZ is the root-mean-square of all Z scores of the bond lengths (or angles).

Mol	Type	Chain	Res	Link	Bond lengths			Bond angles		
					Counts	RMSZ	# Z > 2	Counts	RMSZ	# Z > 2
4	GOL	B	503	-	5,5,5	0.31	0	5,5,5	0.46	0
4	GOL	D	503	-	5,5,5	0.38	0	5,5,5	0.33	0
6	XXG	D	502	2	13,13,13	3.89	7 (53%)	8,21,21	2.05	3 (37%)
4	GOL	C	503	-	5,5,5	0.36	0	5,5,5	0.35	0
4	GOL	A	502	-	5,5,5	0.32	0	5,5,5	0.48	0
4	GOL	C	504	-	5,5,5	0.40	0	5,5,5	0.56	0
4	GOL	D	504	-	5,5,5	0.41	0	5,5,5	0.36	0
6	XXG	C	502	2	13,13,13	3.84	7 (53%)	8,21,21	1.90	3 (37%)

In the following table, the Chirals column lists the number of chiral outliers, the number of chiral centers analysed, the number of these observed in the model and the number defined in the Chemical Component Dictionary. Similar counts are reported in the Torsion and Rings columns. '-' means no outliers of that kind were identified.

Mol	Type	Chain	Res	Link	Chirals	Torsions	Rings
4	GOL	B	503	-	-	4/4/4/4	-
4	GOL	D	503	-	-	1/4/4/4	-
6	XXG	D	502	2	-	2/2/22/22	0/1/1/1
4	GOL	C	503	-	-	2/4/4/4	-
4	GOL	A	502	-	-	2/4/4/4	-
4	GOL	C	504	-	-	2/4/4/4	-
4	GOL	D	504	-	-	2/4/4/4	-
6	XXG	C	502	2	-	2/2/22/22	0/1/1/1

All (14) bond length outliers are listed below:

Mol	Chain	Res	Type	Atoms	Z	Observed(Å)	Ideal(Å)
6	D	502	XXG	C3-C4	9.88	1.41	1.33
6	C	502	XXG	C3-C4	8.98	1.40	1.33
6	C	502	XXG	C4-S9	-6.49	1.60	1.74
6	D	502	XXG	C4-S9	-5.87	1.62	1.74
6	D	502	XXG	O11-S9	5.37	1.70	1.43
6	C	502	XXG	O11-S9	5.35	1.70	1.43
6	C	502	XXG	C6-C1	-3.25	1.41	1.46
6	C	502	XXG	O7-C1	3.03	1.29	1.22

Continued on next page...

Continued from previous page...

Mol	Chain	Res	Type	Atoms	Z	Observed(Å)	Ideal(Å)
6	D	502	XXG	C5-C6	2.95	1.42	1.35
6	D	502	XXG	O7-C1	2.94	1.28	1.22
6	C	502	XXG	C2-C3	-2.61	1.46	1.50
6	D	502	XXG	C2-C3	-2.40	1.46	1.50
6	C	502	XXG	C5-C6	2.34	1.40	1.35
6	D	502	XXG	C6-C1	-2.32	1.42	1.46

All (6) bond angle outliers are listed below:

Mol	Chain	Res	Type	Atoms	Z	Observed(°)	Ideal(°)
6	D	502	XXG	C5-C6-C1	-3.92	118.03	122.20
6	C	502	XXG	O13-C2-C1	3.49	119.35	107.68
6	D	502	XXG	O8-C2-O13	-2.68	103.37	111.24
6	D	502	XXG	O8-C2-C1	2.66	116.58	107.68
6	C	502	XXG	C5-C6-C1	-2.47	119.57	122.20
6	C	502	XXG	O8-C2-O13	-2.40	104.17	111.24

There are no chirality outliers.

All (17) torsion outliers are listed below:

Mol	Chain	Res	Type	Atoms
4	A	502	GOL	C1-C2-C3-O3
4	A	502	GOL	O2-C2-C3-O3
4	B	503	GOL	O1-C1-C2-C3
4	B	503	GOL	C1-C2-C3-O3
4	B	503	GOL	O2-C2-C3-O3
6	C	502	XXG	C3-C4-S9-O11
6	D	502	XXG	C3-C4-S9-O11
4	C	503	GOL	O1-C1-C2-C3
4	C	504	GOL	O1-C1-C2-C3
4	D	504	GOL	O1-C1-C2-C3
4	B	503	GOL	O1-C1-C2-O2
4	C	504	GOL	O1-C1-C2-O2
6	C	502	XXG	C3-C4-S9-O12
6	D	502	XXG	C3-C4-S9-O12
4	D	503	GOL	O1-C1-C2-C3
4	C	503	GOL	O1-C1-C2-O2
4	D	504	GOL	O1-C1-C2-O2

There are no ring outliers.

2 monomers are involved in 2 short contacts:

Mol	Chain	Res	Type	Clashes	Symm-Clashes
6	D	502	XXG	1	0
4	C	504	GOL	1	0

5.7 Other polymers [i](#)

There are no such residues in this entry.

5.8 Polymer linkage issues [i](#)

There are no chain breaks in this entry.

6 Fit of model and data [i](#)

6.1 Protein, DNA and RNA chains [i](#)

In the following table, the column labelled ‘#RSRZ > 2’ contains the number (and percentage) of RSRZ outliers, followed by percent RSRZ outliers for the chain as percentile scores relative to all X-ray entries and entries of similar resolution. The OWAB column contains the minimum, median, 95th percentile and maximum values of the occupancy-weighted average B-factor per residue. The column labelled ‘Q < 0.9’ lists the number of (and percentage) of residues with an average occupancy less than 0.9.

Mol	Chain	Analysed	<RSRZ>	#RSRZ>2	OWAB(Å ²)	Q<0.9
1	A	359/365 (98%)	-0.19	7 (1%) 66 65	11, 18, 29, 40	0
1	B	359/365 (98%)	-0.26	6 (1%) 70 69	10, 17, 28, 34	0
1	C	359/365 (98%)	-0.30	9 (2%) 57 55	11, 17, 28, 40	0
1	D	359/365 (98%)	-0.39	4 (1%) 80 80	10, 15, 25, 35	0
All	All	1436/1460 (98%)	-0.29	26 (1%) 68 67	10, 17, 28, 40	0

All (26) RSRZ outliers are listed below:

Mol	Chain	Res	Type	RSRZ
1	A	361	LEU	4.8
1	A	362	GLY	3.2
1	C	362	GLY	3.1
1	D	361	LEU	2.8
1	C	361	LEU	2.7
1	C	337	ASP	2.7
1	B	361	LEU	2.6
1	B	106	ASP	2.6
1	C	185[A]	GLU	2.6
1	B	362	GLY	2.5
1	B	176	ARG	2.5
1	D	4[B]	GLU	2.4
1	A	105	LYS	2.4
1	C	336	ALA	2.4
1	A	85	GLU	2.4
1	C	360	LYS	2.3
1	A	106	ASP	2.3
1	A	360	LYS	2.3
1	A	320	GLU	2.3
1	D	345	GLY	2.2
1	C	105	LYS	2.2

Continued on next page...

Continued from previous page...

Mol	Chain	Res	Type	RSRZ
1	C	4[B]	GLU	2.2
1	B	320	GLU	2.1
1	C	176	ARG	2.1
1	B	105	LYS	2.0
1	D	360	LYS	2.0

6.2 Non-standard residues in protein, DNA, RNA chains [i](#)

There are no non-standard protein/DNA/RNA residues in this entry.

6.3 Carbohydrates [i](#)

There are no monosaccharides in this entry.

6.4 Ligands [i](#)

In the following table, the Atoms column lists the number of modelled atoms in the group and the number defined in the chemical component dictionary. The B-factors column lists the minimum, median, 95th percentile and maximum values of B factors of atoms in the group. The column labelled 'Q< 0.9' lists the number of atoms with occupancy less than 0.9.

Mol	Type	Chain	Res	Atoms	RSCC	RSR	B-factors(Å ²)	Q<0.9
4	GOL	D	503	6/6	0.62	0.30	67,67,68,68	0
4	GOL	C	503	6/6	0.76	0.24	33,43,44,45	0
4	GOL	C	504	6/6	0.81	0.14	48,48,48,49	0
4	GOL	D	504	6/6	0.84	0.13	38,42,42,43	0
4	GOL	B	503	6/6	0.85	0.14	38,39,40,43	0
6	XXG	C	502	13/13	0.87	0.16	13,19,24,25	13
6	XXG	D	502	13/13	0.89	0.20	6,14,20,21	13
4	GOL	A	502	6/6	0.92	0.14	40,41,43,44	0
2	FE2	A	500	1/1	0.99	0.04	14,14,14,14	0
3	CL	A	501	1/1	0.99	0.04	18,18,18,18	0
3	CL	B	502	1/1	0.99	0.05	18,18,18,18	0
3	CL	C	501	1/1	0.99	0.16	3,3,3,3	1
2	FE2	B	500	1/1	1.00	0.04	14,14,14,14	0
2	FE2	C	500	1/1	1.00	0.04	13,13,13,13	0
5	CA	B	501	1/1	1.00	0.02	15,15,15,15	0
2	FE2	D	500	1/1	1.00	0.04	11,11,11,11	0
3	CL	D	501	1/1	1.00	0.11	11,11,11,11	1

6.5 Other polymers [i](#)

There are no such residues in this entry.