



wwPDB X-ray Structure Validation Summary Report ⓘ

Jun 15, 2020 – 11:55 pm BST

PDB ID : 5ECM
Title : Crystal Structure of FIN219-FIP1 complex with JA and Leu
Authors : Chen, C.Y.; Cheng, Y.S.
Deposited on : 2015-10-20
Resolution : 1.60 Å(reported)

This is a wwPDB X-ray Structure Validation Summary Report for a publicly released PDB entry.

We welcome your comments at validation@mail.wwpdb.org

A user guide is available at

<https://www.wwpdb.org/validation/2017/XrayValidationReportHelp>

with specific help available everywhere you see the ⓘ symbol.

The following versions of software and data (see [references ⓘ](#)) were used in the production of this report:

MolProbity : 4.02b-467
Mogul : 1.8.5 (274361), CSD as541be (2020)
Xtriage (Phenix) : 1.13
EDS : 2.11
buster-report : 1.1.7 (2018)
Percentile statistics : 20191225.v01 (using entries in the PDB archive December 25th 2019)
Refmac : 5.8.0158
CCP4 : 7.0.044 (Gargrove)
Ideal geometry (proteins) : Engh & Huber (2001)
Ideal geometry (DNA, RNA) : Parkinson et al. (1996)
Validation Pipeline (wwPDB-VP) : 2.11

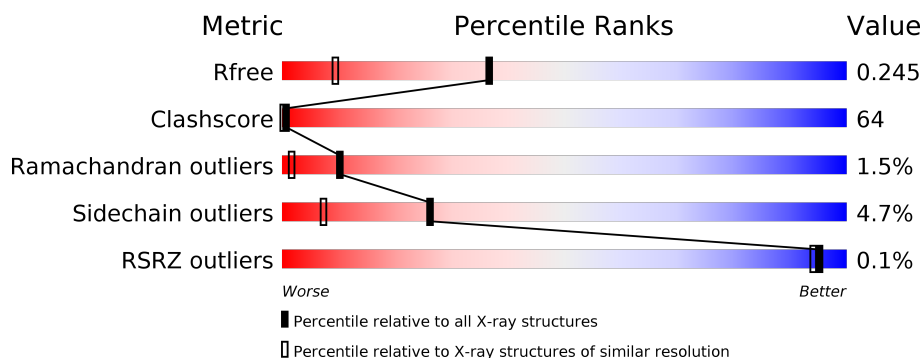
1 Overall quality at a glance

The following experimental techniques were used to determine the structure:

X-RAY DIFFRACTION

The reported resolution of this entry is 1.60 Å.

Percentile scores (ranging between 0-100) for global validation metrics of the entry are shown in the following graphic. The table shows the number of entries on which the scores are based.



Metric	Whole archive (#Entries)	Similar resolution (#Entries, resolution range(Å))
R_{free}	130704	3398 (1.60-1.60)
Clashscore	141614	3665 (1.60-1.60)
Ramachandran outliers	138981	3564 (1.60-1.60)
Sidechain outliers	138945	3563 (1.60-1.60)
RSRZ outliers	127900	3321 (1.60-1.60)

The table below summarises the geometric issues observed across the polymeric chains and their fit to the electron density. The red, orange, yellow and green segments on the lower bar indicate the fraction of residues that contain outliers for ≥ 3 , 2, 1 and 0 types of geometric quality criteria respectively. A grey segment represents the fraction of residues that are not modelled. The numeric value for each fraction is indicated below the corresponding segment, with a dot representing fractions $\leq 5\%$. The upper red bar (where present) indicates the fraction of residues that have poor fit to the electron density. The numeric value is given above the bar.

Mol	Chain	Length	Quality of chain
1	A	575	
1	D	575	
2	B	223	
2	C	223	
2	E	223	
2	F	223	

The following table lists non-polymeric compounds, carbohydrate monomers and non-standard residues in protein, DNA, RNA chains that are outliers for geometric or electron-density-fit criteria:

Mol	Type	Chain	Res	Chirality	Geometry	Clashes	Electron density
4	LEU	A	602	-	-	X	-
4	LEU	D	602	-	-	X	-

2 Entry composition [i](#)

There are 6 unique types of molecules in this entry. The entry contains 17738 atoms, of which 0 are hydrogens and 0 are deuteriums.

In the tables below, the ZeroOcc column contains the number of atoms modelled with zero occupancy, the AltConf column contains the number of residues with at least one atom in alternate conformation and the Trace column contains the number of residues modelled with at most 2 atoms.

- Molecule 1 is a protein called Jasmonic acid-amido synthetase JAR1.

Mol	Chain	Residues	Atoms					ZeroOcc	AltConf	Trace
1	A	569	Total	C	N	O	S	0	0	0
			4479	2859	748	850	22			
1	D	569	Total	C	N	O	S	0	0	0
			4479	2859	748	850	22			

- Molecule 2 is a protein called Glutathione S-transferase U20.

Mol	Chain	Residues	Atoms					ZeroOcc	AltConf	Trace
2	B	214	Total	C	N	O	S	0	0	0
			1748	1136	284	323	5			
2	C	214	Total	C	N	O	S	0	0	0
			1748	1136	284	323	5			
2	E	214	Total	C	N	O	S	0	0	0
			1748	1136	284	323	5			
2	F	214	Total	C	N	O	S	0	0	0
			1748	1136	284	323	5			

There are 24 discrepancies between the modelled and reference sequences:

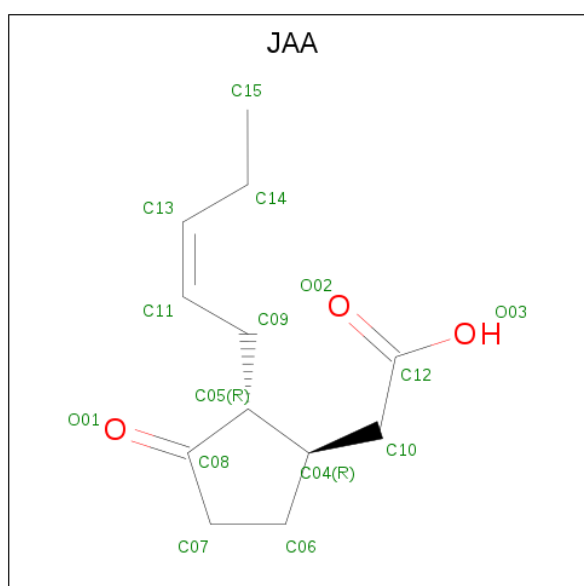
Chain	Residue	Modelled	Actual	Comment	Reference
B	-5	HIS	-	expression tag	UNP Q8L7C9
B	-4	HIS	-	expression tag	UNP Q8L7C9
B	-3	HIS	-	expression tag	UNP Q8L7C9
B	-2	HIS	-	expression tag	UNP Q8L7C9
B	-1	HIS	-	expression tag	UNP Q8L7C9
B	0	HIS	-	expression tag	UNP Q8L7C9
C	-5	HIS	-	expression tag	UNP Q8L7C9
C	-4	HIS	-	expression tag	UNP Q8L7C9
C	-3	HIS	-	expression tag	UNP Q8L7C9
C	-2	HIS	-	expression tag	UNP Q8L7C9
C	-1	HIS	-	expression tag	UNP Q8L7C9
C	0	HIS	-	expression tag	UNP Q8L7C9

Continued on next page...

Continued from previous page...

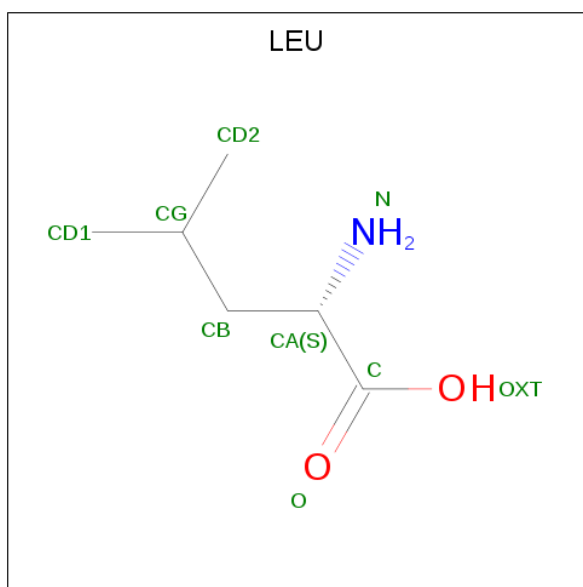
Chain	Residue	Modelled	Actual	Comment	Reference
E	-5	HIS	-	expression tag	UNP Q8L7C9
E	-4	HIS	-	expression tag	UNP Q8L7C9
E	-3	HIS	-	expression tag	UNP Q8L7C9
E	-2	HIS	-	expression tag	UNP Q8L7C9
E	-1	HIS	-	expression tag	UNP Q8L7C9
E	0	HIS	-	expression tag	UNP Q8L7C9
F	-5	HIS	-	expression tag	UNP Q8L7C9
F	-4	HIS	-	expression tag	UNP Q8L7C9
F	-3	HIS	-	expression tag	UNP Q8L7C9
F	-2	HIS	-	expression tag	UNP Q8L7C9
F	-1	HIS	-	expression tag	UNP Q8L7C9
F	0	HIS	-	expression tag	UNP Q8L7C9

- Molecule 3 is {(1R,2R)-3-oxo-2-[(2Z)-pent-2-en-1-yl]cyclopentyl}acetic acid (three-letter code: JAA) (formula: C₁₂H₁₈O₃).



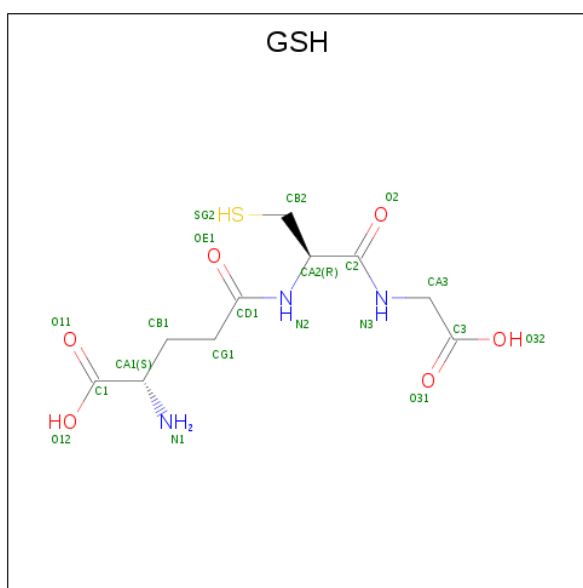
Mol	Chain	Residues	Atoms			ZeroOcc	AltConf
3	A	1	Total	C	O	0	0
			15	12	3		
3	D	1	Total	C	O	0	0
			15	12	3		

- Molecule 4 is LEUCINE (three-letter code: LEU) (formula: C₆H₁₃NO₂).



Mol	Chain	Residues	Atoms				ZeroOcc	AltConf
4	A	1	Total	C	N	O	0	0
			9	6	1	2		
4	D	1	Total	C	N	O	0	0
			9	6	1	2		

- Molecule 5 is GLUTATHIONE (three-letter code: GSH) (formula: C₁₀H₁₇N₃O₆S).



Mol	Chain	Residues	Atoms					ZeroOcc	AltConf
5	B	1	Total	C	N	O	S	0	0
			20	10	3	6	1		
5	C	1	Total	C	N	O	S	0	0
			20	10	3	6	1		

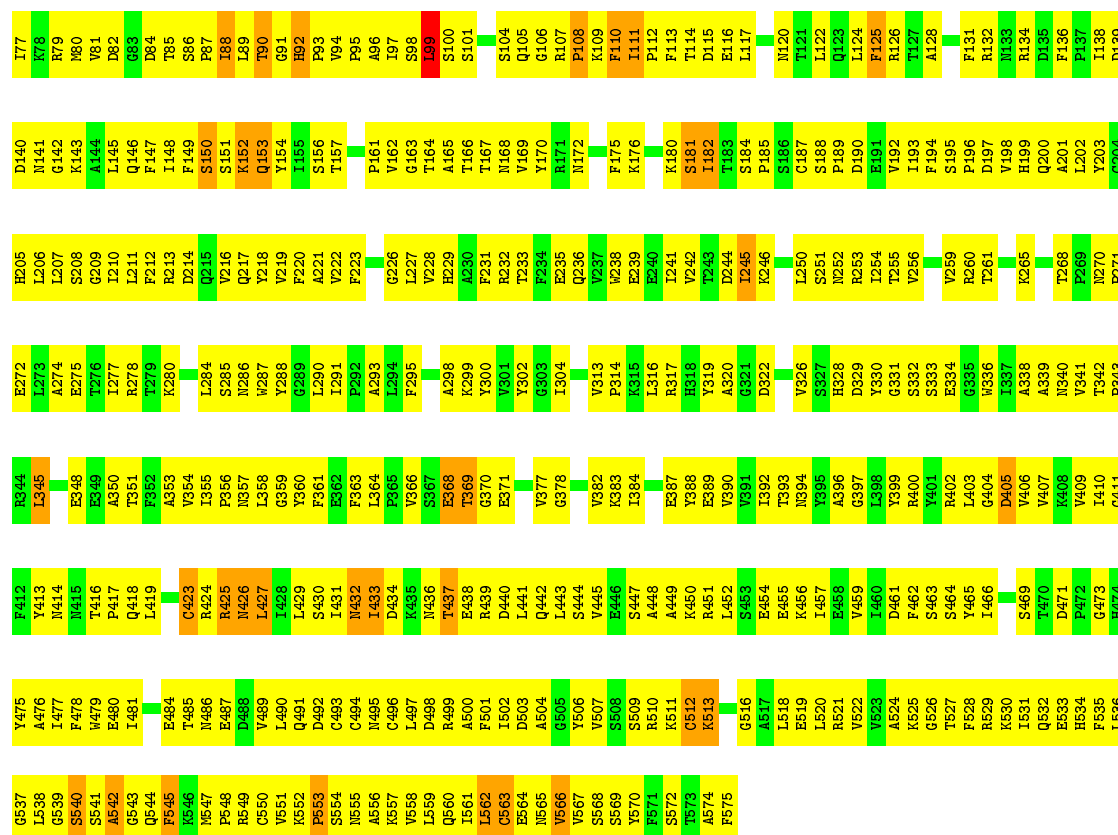
Continued on next page...

Continued from previous page...

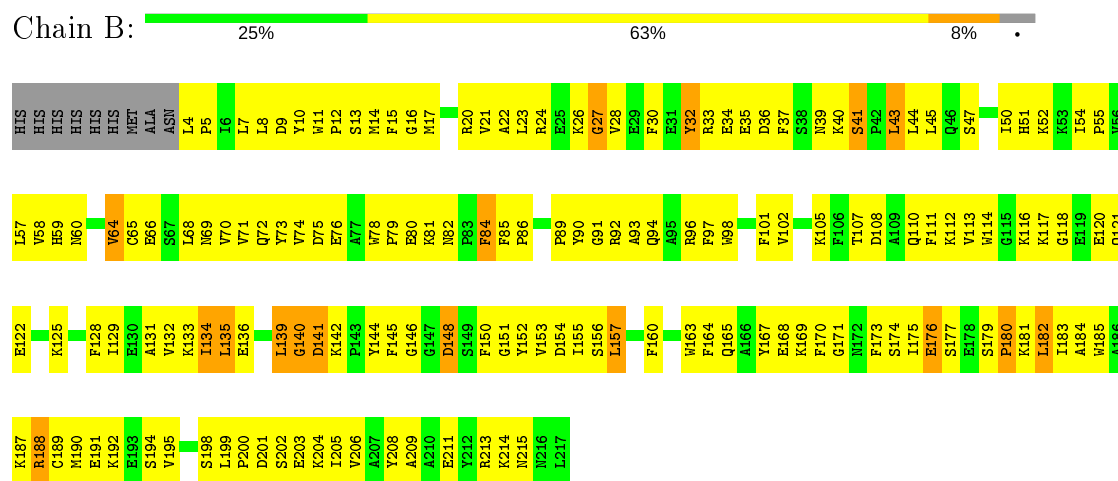
Mol	Chain	Residues	Atoms					ZeroOcc	AltConf
5	E	1	Total	C	N	O	S	0	0
			20	10	3	6	1		
5	F	1	Total	C	N	O	S	0	0
			20	10	3	6	1		

- Molecule 6 is water.

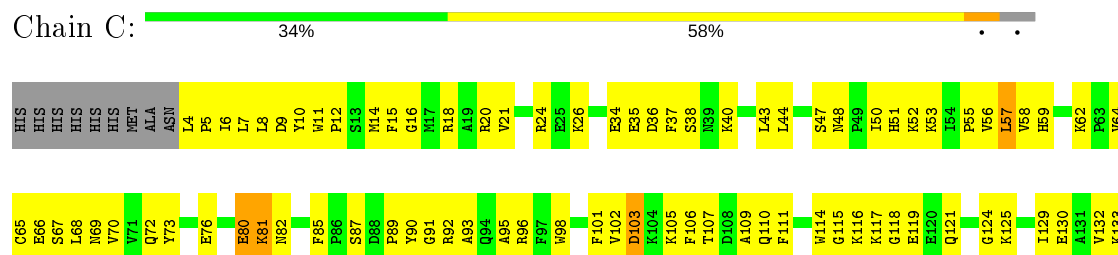
Mol	Chain	Residues	Atoms		ZeroOcc	AltConf
6	A	435	Total	O	0	0
			435	435		
6	B	185	Total	O	0	0
			185	185		
6	C	184	Total	O	0	0
			184	184		
6	D	472	Total	O	0	0
			472	472		
6	E	215	Total	O	0	0
			215	215		
6	F	169	Total	O	0	0
			169	169		

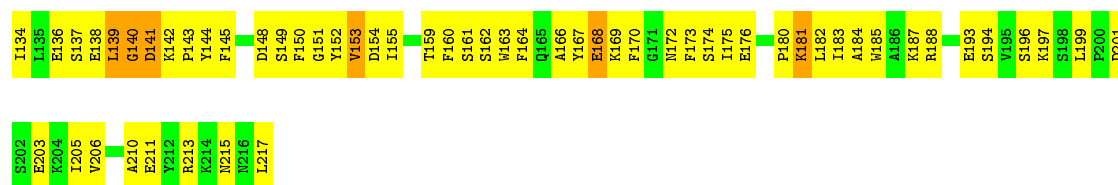


• Molecule 2: Glutathione S-transferase U20



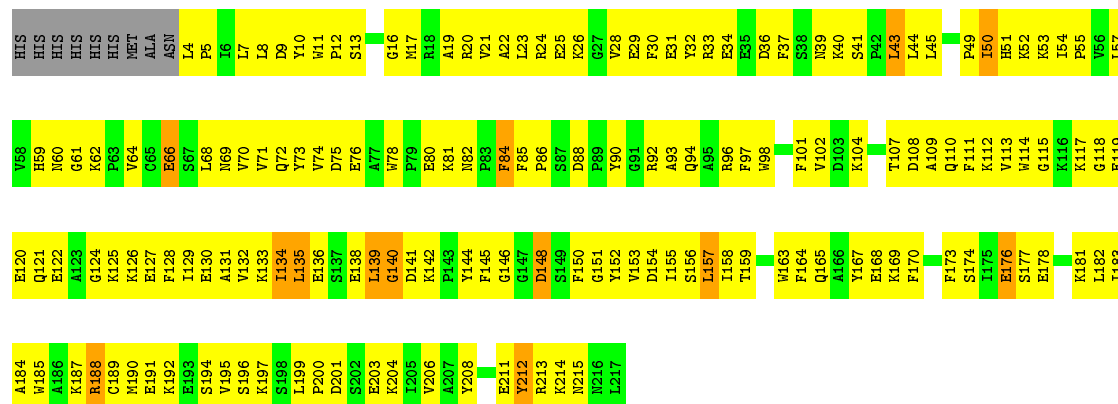
• Molecule 2: Glutathione S-transferase U20





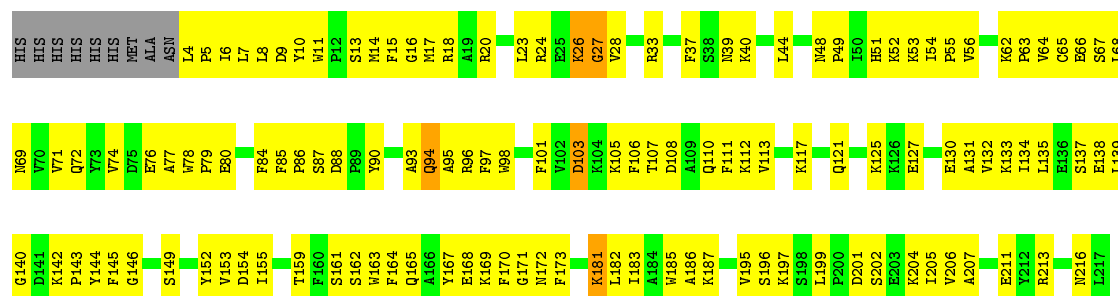
• Molecule 2: Glutathione S-transferase U20

Chain E: 24% 66% 6%



• Molecule 2: Glutathione S-transferase U20

Chain F: 39% 55%



4 Data and refinement statistics

Property	Value	Source
Space group	P 1	Depositor
Cell constants a, b, c, α , β , γ	53.82Å 53.90Å 195.81Å 97.15° 92.27° 113.64°	Depositor
Resolution (Å)	24.17 – 1.60 24.17 – 1.60	Depositor EDS
% Data completeness (in resolution range)	98.9 (24.17-1.60) 98.9 (24.17-1.60)	Depositor EDS
R_{merge}	0.08	Depositor
R_{sym}	(Not available)	Depositor
$\langle I/\sigma(I) \rangle$ ¹	1.72 (at 1.60Å)	Xtriage
Refinement program	PHENIX 1.9_1692	Depositor
R, R_{free}	0.232 , 0.245 0.232 , 0.245	Depositor DCC
R_{free} test set	25926 reflections (9.98%)	wwPDB-VP
Wilson B-factor (Å ²)	2.8	Xtriage
Anisotropy	0.493	Xtriage
Bulk solvent k_{sol} (e/Å ³), B_{sol} (Å ²)	0.62 , 194.8	EDS
L-test for twinning ²	$\langle L \rangle = 0.46$, $\langle L^2 \rangle = 0.29$	Xtriage
Estimated twinning fraction	0.078 for k,h,-h-k-l 0.003 for -k,-h,l 0.001 for -h,-k,h+k+l	Xtriage
F_o, F_c correlation	0.86	EDS
Total number of atoms	17738	wwPDB-VP
Average B, all atoms (Å ²)	4.0	wwPDB-VP

Xtriage's analysis on translational NCS is as follows: *The analyses of the Patterson function reveals a significant off-origin peak that is 59.02 % of the origin peak, indicating pseudo-translational symmetry. The chance of finding a peak of this or larger height randomly in a structure without pseudo-translational symmetry is equal to 1.8765e-05. The detected translational NCS is most likely also responsible for the elevated intensity ratio.*

¹Intensities estimated from amplitudes.

²Theoretical values of $\langle |L| \rangle$, $\langle L^2 \rangle$ for acentric reflections are 0.5, 0.333 respectively for untwinned datasets, and 0.375, 0.2 for perfectly twinned datasets.

5 Model quality

5.1 Standard geometry

Bond lengths and bond angles in the following residue types are not validated in this section: GSH, JAA

The Z score for a bond length (or angle) is the number of standard deviations the observed value is removed from the expected value. A bond length (or angle) with $|Z| > 5$ is considered an outlier worth inspection. RMSZ is the root-mean-square of all Z scores of the bond lengths (or angles).

Mol	Chain	Bond lengths		Bond angles	
		RMSZ	# Z >5	RMSZ	# Z >5
1	A	0.50	0/4581	0.81	4/6219 (0.1%)
1	D	0.49	0/4581	0.78	2/6219 (0.0%)
2	B	0.44	0/1799	0.65	1/2428 (0.0%)
2	C	0.40	0/1799	0.62	1/2428 (0.0%)
2	E	0.45	0/1799	0.72	2/2428 (0.1%)
2	F	0.39	0/1799	0.61	0/2428
All	All	0.46	0/16358	0.74	10/22150 (0.0%)

Chiral center outliers are detected by calculating the chiral volume of a chiral center and verifying if the center is modelled as a planar moiety or with the opposite hand. A planarity outlier is detected by checking planarity of atoms in a peptide group, atoms in a mainchain group or atoms of a sidechain that are expected to be planar.

Mol	Chain	#Chirality outliers	#Planarity outliers
1	A	0	3
1	D	0	3
2	C	0	1
2	F	0	1
All	All	0	8

There are no bond length outliers.

The worst 5 of 10 bond angle outliers are listed below:

Mol	Chain	Res	Type	Atoms	Z	Observed(°)	Ideal(°)
2	E	188	ARG	NE-CZ-NH1	-12.45	114.07	120.30
2	E	188	ARG	NE-CZ-NH2	9.45	125.03	120.30
1	A	99	LEU	CA-CB-CG	5.97	129.02	115.30
1	D	99	LEU	CA-CB-CG	5.87	128.81	115.30
1	A	102	GLY	N-CA-C	-5.49	99.38	113.10

There are no chirality outliers.

5 of 8 planarity outliers are listed below:

Mol	Chain	Res	Type	Group
1	A	427	LEU	Peptide
1	A	431	ILE	Peptide
1	A	432	ASN	Peptide
2	C	140	GLY	Peptide
1	D	426	ASN	Peptide

5.2 Too-close contacts ⓘ

In the following table, the Non-H and H(model) columns list the number of non-hydrogen atoms and hydrogen atoms in the chain respectively. The H(added) column lists the number of hydrogen atoms added and optimized by MolProbity. The Clashes column lists the number of clashes within the asymmetric unit, whereas Symm-Clashes lists symmetry related clashes.

Mol	Chain	Non-H	H(model)	H(added)	Clashes	Symm-Clashes
1	A	4479	0	4434	627	4
1	D	4479	0	4434	653	5
2	B	1748	0	1704	243	0
2	C	1748	0	1704	202	0
2	E	1748	0	1704	294	1
2	F	1748	0	1704	147	2
3	A	15	0	0	5	0
3	D	15	0	0	0	0
4	A	9	0	10	7	0
4	D	9	0	10	6	0
5	B	20	0	15	2	0
5	C	20	0	15	4	0
5	E	20	0	15	2	0
5	F	20	0	15	3	0
6	A	435	0	0	124	3
6	B	185	0	0	54	1
6	C	184	0	0	57	1
6	D	472	0	0	139	4
6	E	215	0	0	96	3
6	F	169	0	0	41	2
All	All	17738	0	15764	2034	18

The all-atom clashscore is defined as the number of clashes found per 1000 atoms (including hydrogen atoms). The all-atom clashscore for this structure is 64.

The worst 5 of 2034 close contacts within the same asymmetric unit are listed below, sorted by

their clash magnitude.

Atom-1	Atom-2	Interatomic distance (Å)	Clash overlap (Å)
1:A:176:LYS:NZ	1:A:190:ASP:OD2	1.64	1.31
1:D:499:ARG:O	2:E:188:ARG:NH1	1.65	1.26
1:D:176:LYS:NZ	1:D:190:ASP:OD2	1.69	1.25
1:A:529:ARG:NH1	1:A:533:GLU:OE2	1.72	1.23
1:D:456:LYS:NZ	2:E:201:ASP:OD2	1.77	1.16

The worst 5 of 18 symmetry-related close contacts are listed below. The label for Atom-2 includes the symmetry operator and encoded unit-cell translations to be applied.

Atom-1	Atom-2	Interatomic distance (Å)	Clash overlap (Å)
1:D:270:ASN:O	1:D:511:LYS:NZ[1_455]	1.93	0.27
2:E:215:ASN:O	2:F:33:ARG:NH2[1_455]	1.99	0.21
1:A:46:GLN:OE1	2:F:149:SER:OG[1_566]	2.01	0.19
1:D:299:LYS:NZ	1:D:431:ILE:O[1_455]	2.01	0.19
1:A:270:ASN:ND2	1:A:510:ARG:O[1_455]	2.02	0.18

5.3 Torsion angles

5.3.1 Protein backbone

In the following table, the Percentiles column shows the percent Ramachandran outliers of the chain as a percentile score with respect to all X-ray entries followed by that with respect to entries of similar resolution.

The Analysed column shows the number of residues for which the backbone conformation was analysed, and the total number of residues.

Mol	Chain	Analysed	Favoured	Allowed	Outliers	Percentiles	
1	A	567/575 (99%)	523 (92%)	34 (6%)	10 (2%)	8	1
1	D	567/575 (99%)	520 (92%)	38 (7%)	9 (2%)	9	1
2	B	212/223 (95%)	191 (90%)	15 (7%)	6 (3%)	5	0
2	C	212/223 (95%)	199 (94%)	12 (6%)	1 (0%)	29	11
2	E	212/223 (95%)	194 (92%)	16 (8%)	2 (1%)	17	4
2	F	212/223 (95%)	198 (93%)	12 (6%)	2 (1%)	17	4
All	All	1982/2042 (97%)	1825 (92%)	127 (6%)	30 (2%)	10	2

5 of 30 Ramachandran outliers are listed below:

Mol	Chain	Res	Type
1	A	433	ILE
1	A	437	THR
1	A	513	LYS
1	A	540	SER
1	A	542	ALA

5.3.2 Protein sidechains ⓘ

In the following table, the Percentiles column shows the percent sidechain outliers of the chain as a percentile score with respect to all X-ray entries followed by that with respect to entries of similar resolution.

The Analysed column shows the number of residues for which the sidechain conformation was analysed, and the total number of residues.

Mol	Chain	Analysed	Rotameric	Outliers	Percentiles	
1	A	499/505 (99%)	473 (95%)	26 (5%)	23	6
1	D	499/505 (99%)	477 (96%)	22 (4%)	28	8
2	B	187/195 (96%)	174 (93%)	13 (7%)	15	3
2	C	187/195 (96%)	180 (96%)	7 (4%)	34	11
2	E	187/195 (96%)	177 (95%)	10 (5%)	22	5
2	F	187/195 (96%)	183 (98%)	4 (2%)	53	29
All	All	1746/1790 (98%)	1664 (95%)	82 (5%)	26	7

5 of 82 residues with a non-rotameric sidechain are listed below:

Mol	Chain	Res	Type
2	B	176	GLU
2	C	181	LYS
2	E	157	LEU
2	B	182	LEU
2	C	81	LYS

Some sidechains can be flipped to improve hydrogen bonding and reduce clashes. 5 of 19 such sidechains are listed below:

Mol	Chain	Res	Type
1	D	39	ASN
1	D	199	HIS
1	D	560	GLN
2	C	172	ASN

Continued on next page...

Continued from previous page...

Mol	Chain	Res	Type
1	D	565	ASN

5.3.3 RNA [i](#)

There are no RNA molecules in this entry.

5.4 Non-standard residues in protein, DNA, RNA chains [i](#)

There are no non-standard protein/DNA/RNA residues in this entry.

5.5 Carbohydrates [i](#)

There are no carbohydrates in this entry.

5.6 Ligand geometry [i](#)

8 ligands are modelled in this entry.

In the following table, the Counts columns list the number of bonds (or angles) for which Mogul statistics could be retrieved, the number of bonds (or angles) that are observed in the model and the number of bonds (or angles) that are defined in the Chemical Component Dictionary. The Link column lists molecule types, if any, to which the group is linked. The Z score for a bond length (or angle) is the number of standard deviations the observed value is removed from the expected value. A bond length (or angle) with $|Z| > 2$ is considered an outlier worth inspection. RMSZ is the root-mean-square of all Z scores of the bond lengths (or angles).

Mol	Type	Chain	Res	Link	Bond lengths			Bond angles		
					Counts	RMSZ	$\# Z > 2$	Counts	RMSZ	$\# Z > 2$
3	JAA	A	601	-	12,15,15	5.90	6 (50%)	12,19,19	3.25	6 (50%)
5	GSH	B	301	-	12,19,19	1.69	3 (25%)	15,24,24	3.00	5 (33%)
3	JAA	D	601	-	12,15,15	6.04	6 (50%)	12,19,19	3.33	6 (50%)
5	GSH	F	301	-	12,19,19	1.78	4 (33%)	15,24,24	3.44	8 (53%)
5	GSH	E	301	-	12,19,19	1.76	4 (33%)	15,24,24	3.28	7 (46%)
5	GSH	C	301	-	12,19,19	1.73	4 (33%)	15,24,24	2.98	9 (60%)

In the following table, the Chirals column lists the number of chiral outliers, the number of chiral centers analysed, the number of these observed in the model and the number defined in the Chemical Component Dictionary. Similar counts are reported in the Torsion and Rings columns. '-' means no outliers of that kind were identified.

Mol	Type	Chain	Res	Link	Chirals	Torsions	Rings
3	JAA	A	601	-	-	5/7/22/22	0/1/1/1
5	GSH	B	301	-	-	4/18/24/24	-
3	JAA	D	601	-	-	5/7/22/22	0/1/1/1
5	GSH	F	301	-	-	0/18/24/24	-
5	GSH	E	301	-	-	4/18/24/24	-
5	GSH	C	301	-	-	5/18/24/24	-

The worst 5 of 27 bond length outliers are listed below:

Mol	Chain	Res	Type	Atoms	Z	Observed(Å)	Ideal(Å)
3	D	601	JAA	C05-C08	-12.92	1.30	1.52
3	A	601	JAA	C05-C08	-12.75	1.31	1.52
3	A	601	JAA	C06-C04	-11.31	1.24	1.53
3	D	601	JAA	C06-C04	-11.30	1.24	1.53
3	D	601	JAA	C10-C04	-7.58	1.44	1.53

The worst 5 of 41 bond angle outliers are listed below:

Mol	Chain	Res	Type	Atoms	Z	Observed(°)	Ideal(°)
5	B	301	GSH	CA2-CB2-SG2	-10.06	102.89	114.19
5	F	301	GSH	CA2-CB2-SG2	-9.23	103.82	114.19
5	E	301	GSH	CA2-CB2-SG2	-9.11	103.95	114.19
5	C	301	GSH	CA2-CB2-SG2	-7.86	105.35	114.19
3	D	601	JAA	C07-C06-C04	-6.58	97.53	104.41

There are no chirality outliers.

5 of 23 torsion outliers are listed below:

Mol	Chain	Res	Type	Atoms
3	A	601	JAA	C05-C04-C10-C12
3	A	601	JAA	C06-C04-C10-C12
5	B	301	GSH	N2-CA2-CB2-SG2
5	B	301	GSH	C2-CA2-CB2-SG2
5	E	301	GSH	N2-CA2-CB2-SG2

There are no ring outliers.

5 monomers are involved in 16 short contacts:

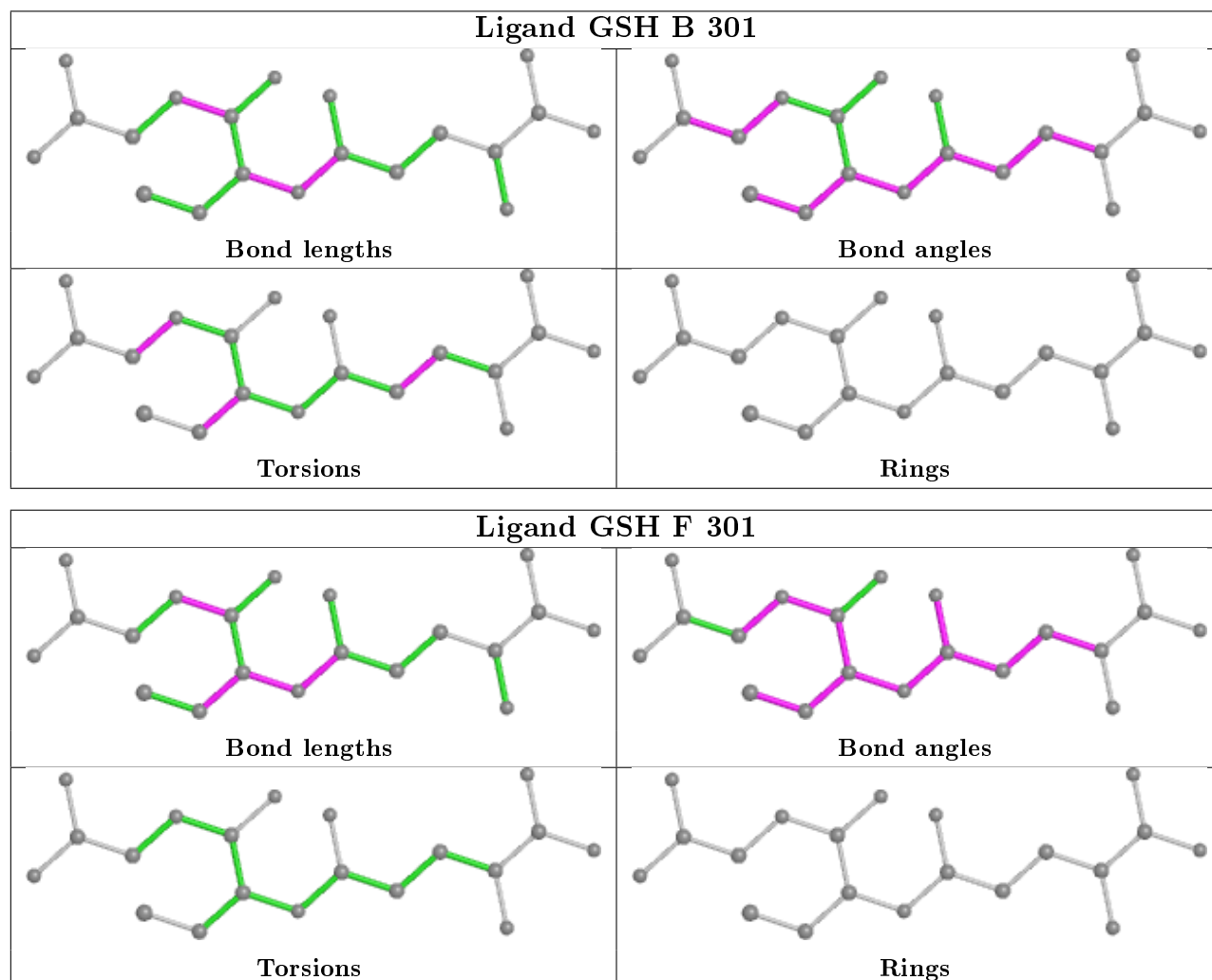
Mol	Chain	Res	Type	Clashes	Symm-Clashes
3	A	601	JAA	5	0
5	B	301	GSH	2	0

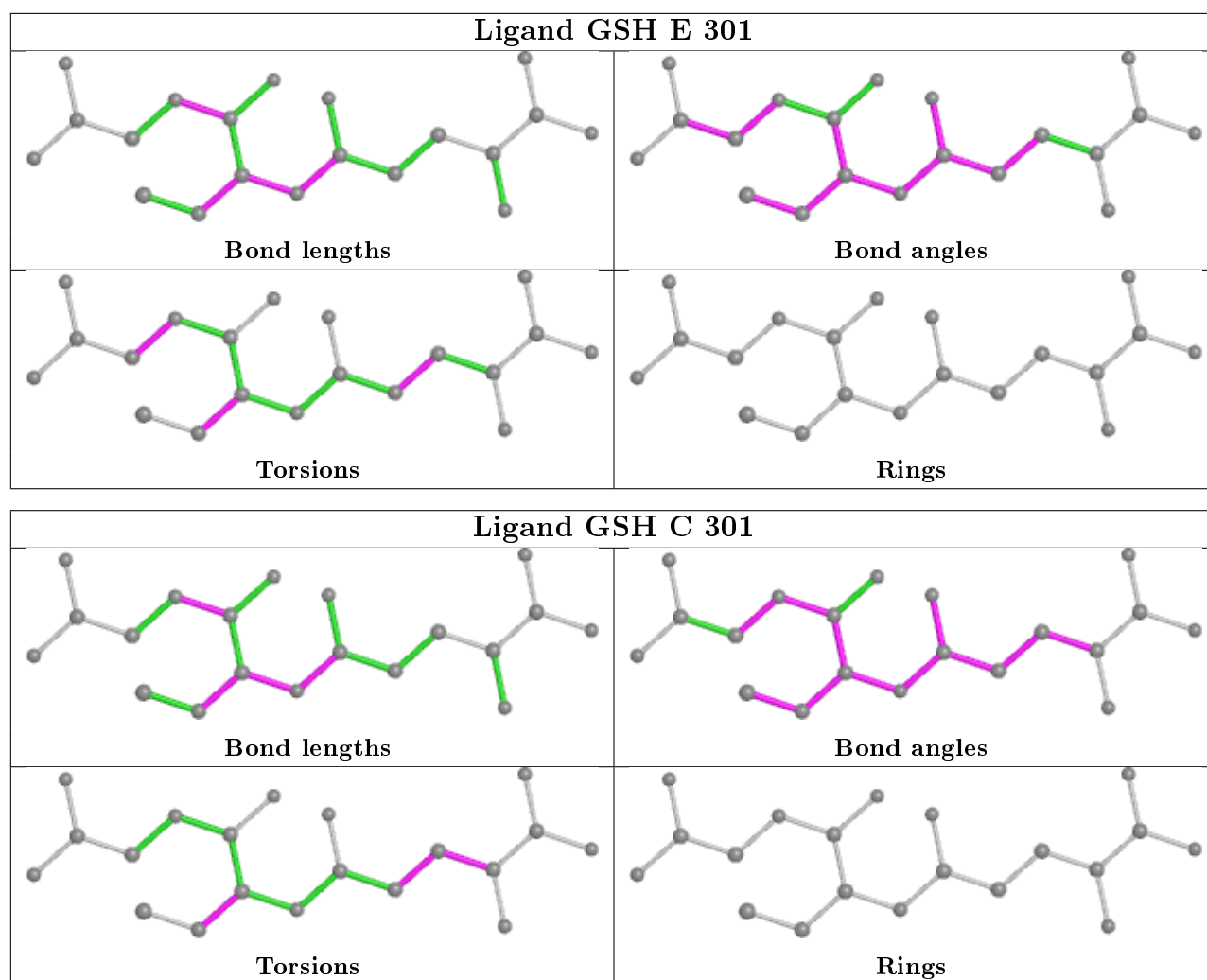
Continued on next page...

Continued from previous page...

Mol	Chain	Res	Type	Clashes	Symm-Clashes
5	F	301	GSH	3	0
5	E	301	GSH	2	0
5	C	301	GSH	4	0

The following is a two-dimensional graphical depiction of Mogul quality analysis of bond lengths, bond angles, torsion angles, and ring geometry for all instances of the Ligand of Interest. In addition, ligands with molecular weight > 250 and outliers as shown on the validation Tables will also be included. For torsion angles, if less than 5% of the Mogul distribution of torsion angles is within 10 degrees of the torsion angle in question, then that torsion angle is considered an outlier. Any bond that is central to one or more torsion angles identified as an outlier by Mogul will be highlighted in the graph. For rings, the root-mean-square deviation (RMSD) between the ring in question and similar rings identified by Mogul is calculated over all ring torsion angles. If the average RMSD is greater than 60 degrees and the minimal RMSD between the ring in question and any Mogul-identified rings is also greater than 60 degrees, then that ring is considered an outlier. The outliers are highlighted in purple. The color gray indicates Mogul did not find sufficient equivalents in the CSD to analyse the geometry.





5.7 Other polymers [i](#)

There are no such residues in this entry.

5.8 Polymer linkage issues [i](#)

There are no chain breaks in this entry.

6 Fit of model and data [i](#)

6.1 Protein, DNA and RNA chains [i](#)

In the following table, the column labelled ‘#RSRZ> 2’ contains the number (and percentage) of RSRZ outliers, followed by percent RSRZ outliers for the chain as percentile scores relative to all X-ray entries and entries of similar resolution. The OWAB column contains the minimum, median, 95th percentile and maximum values of the occupancy-weighted average B-factor per residue. The column labelled ‘Q< 0.9’ lists the number of (and percentage) of residues with an average occupancy less than 0.9.

Mol	Chain	Analysed	<RSRZ>	#RSRZ>2	OWAB(Å ²)	Q<0.9
1	A	569/575 (98%)	-0.21	1 (0%) 95 94	3, 5, 5, 30	0
1	D	569/575 (98%)	-0.27	0 100 100	3, 5, 5, 16	0
2	B	214/223 (95%)	-0.36	0 100 100	2, 3, 7, 11	0
2	C	214/223 (95%)	-0.36	0 100 100	3, 4, 5, 5	0
2	E	214/223 (95%)	-0.37	0 100 100	2, 3, 7, 11	0
2	F	214/223 (95%)	-0.38	0 100 100	4, 4, 5, 6	0
All	All	1994/2042 (97%)	-0.29	1 (0%) 95 94	2, 5, 5, 30	0

All (1) RSRZ outliers are listed below:

Mol	Chain	Res	Type	RSRZ
1	A	500	ALA	2.3

6.2 Non-standard residues in protein, DNA, RNA chains [i](#)

There are no non-standard protein/DNA/RNA residues in this entry.

6.3 Carbohydrates [i](#)

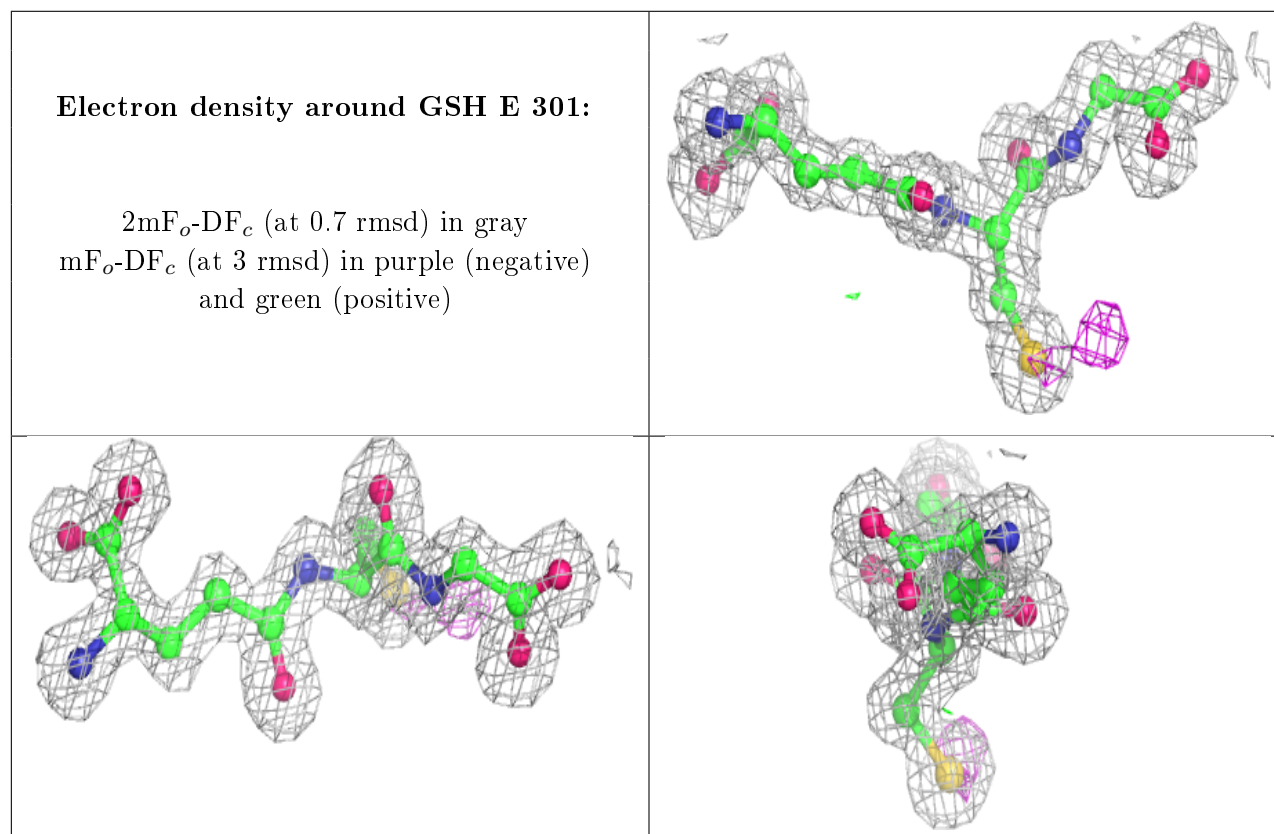
There are no carbohydrates in this entry.

6.4 Ligands [i](#)

In the following table, the Atoms column lists the number of modelled atoms in the group and the number defined in the chemical component dictionary. The B-factors column lists the minimum, median, 95th percentile and maximum values of B factors of atoms in the group. The column labelled ‘Q< 0.9’ lists the number of atoms with occupancy less than 0.9.

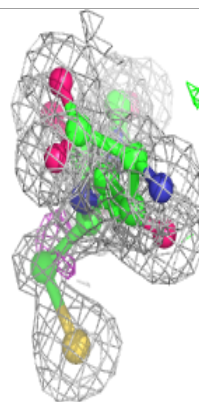
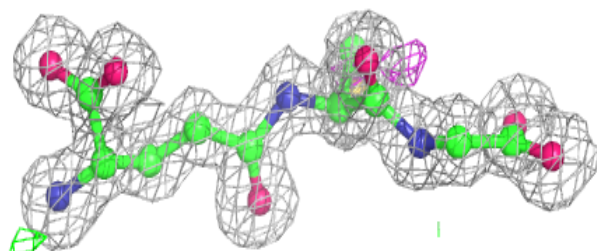
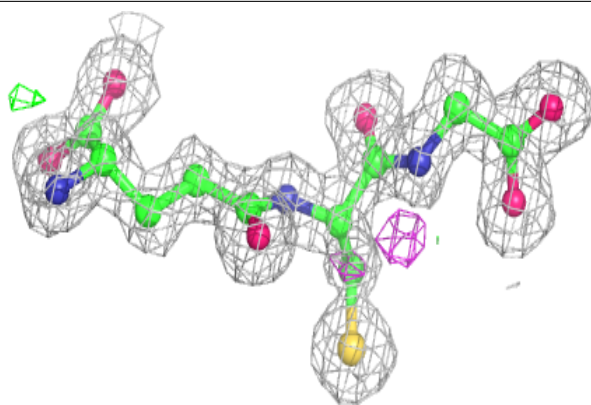
Mol	Type	Chain	Res	Atoms	RSCC	RSR	B-factors(\AA^2)	Q<0.9
4	LEU	D	602	9/9	0.95	0.11	4,5,5,5	0
3	JAA	D	601	15/15	0.96	0.13	3,4,4,5	0
3	JAA	A	601	15/15	0.98	0.11	3,3,4,4	0
5	GSH	E	301	20/20	0.98	0.08	3,4,4,5	0
4	LEU	A	602	9/9	0.98	0.08	3,3,4,5	0
5	GSH	B	301	20/20	0.99	0.08	3,4,4,4	0
5	GSH	F	301	20/20	0.99	0.08	3,4,5,5	0
5	GSH	C	301	20/20	0.99	0.09	3,4,4,4	0

The following is a graphical depiction of the model fit to experimental electron density of all instances of the Ligand of Interest. In addition, ligands with molecular weight > 250 and outliers as shown on the geometry validation Tables will also be included. Each fit is shown from different orientation to approximate a three-dimensional view.

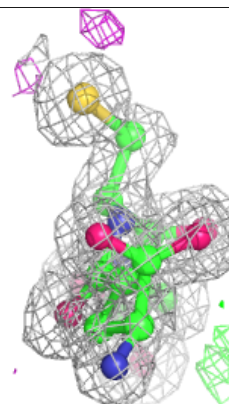
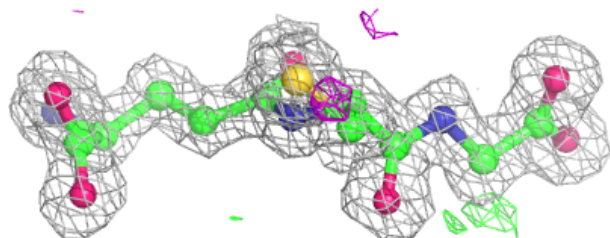
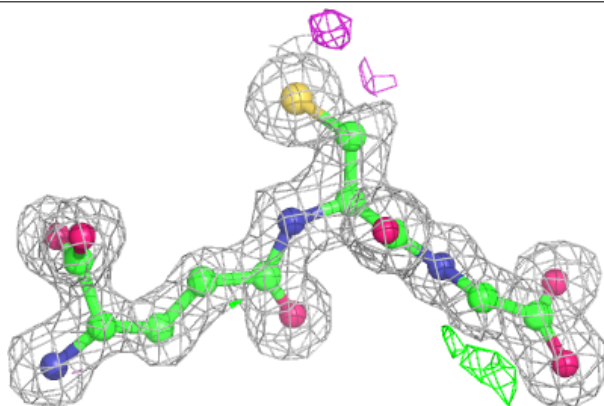


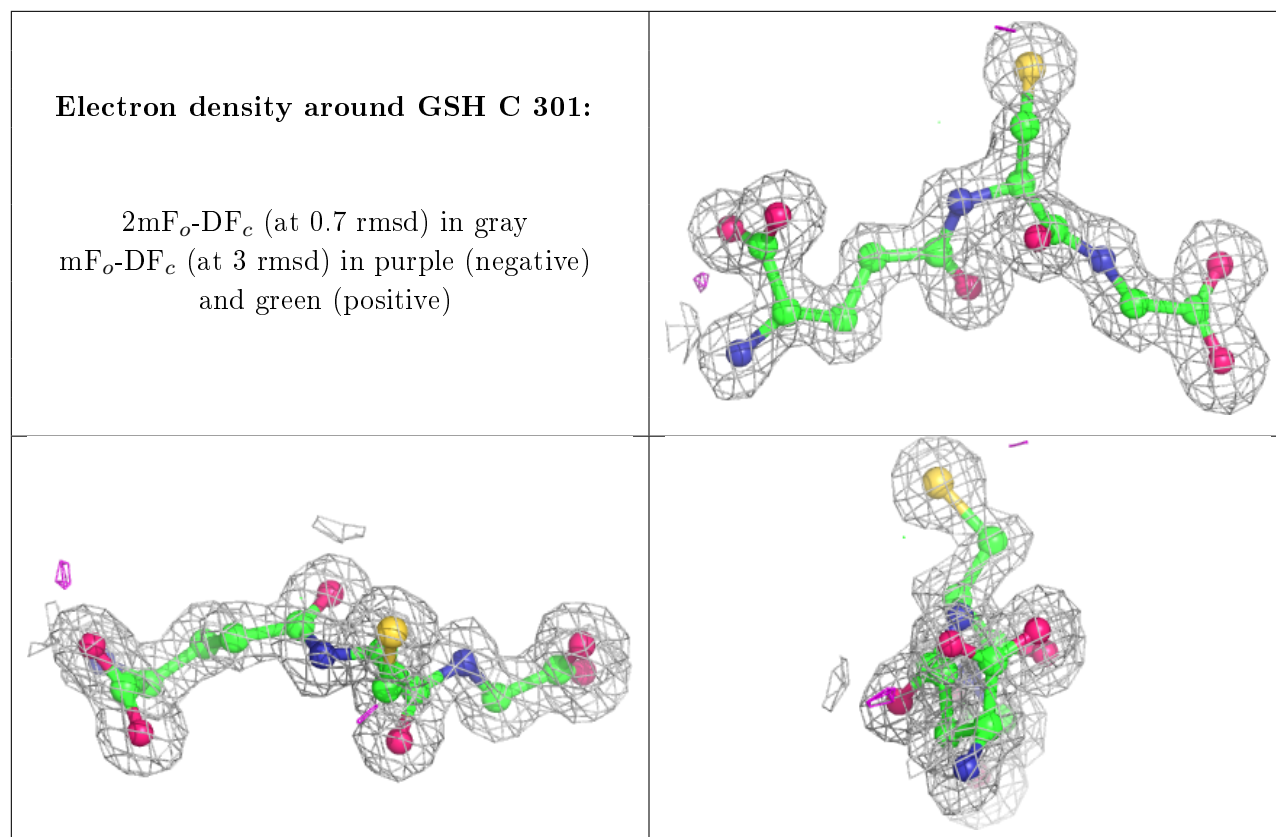
Electron density around GSH B 301:

$2mF_o-DF_c$ (at 0.7 rmsd) in gray
 mF_o-DF_c (at 3 rmsd) in purple (negative)
and green (positive)

**Electron density around GSH F 301:**

$2mF_o-DF_c$ (at 0.7 rmsd) in gray
 mF_o-DF_c (at 3 rmsd) in purple (negative)
and green (positive)





6.5 Other polymers [i](#)

There are no such residues in this entry.