



Full wwPDB X-ray Structure Validation Report ⓘ

Aug 9, 2020 – 09:01 AM BST

PDB ID : 4EEA
Title : Crystal structure of human M340H-beta-1,4-galactosyltransferase-1 (M340H-B4GAL-T1) in complex with GLCNAC-BETA1,6-Gal-Beta1,4-Glc-BET A
Authors : Ramakrishnan, B.; Qasba, P.K.
Deposited on : 2012-03-28
Resolution : 2.00 Å(reported)

This is a Full wwPDB X-ray Structure Validation Report for a publicly released PDB entry.

We welcome your comments at validation@mail.wwpdb.org

A user guide is available at

<https://www.wwpdb.org/validation/2017/XrayValidationReportHelp>

with specific help available everywhere you see the ⓘ symbol.

The following versions of software and data (see [references ⓘ](#)) were used in the production of this report:

MolProbity : 4.02b-467
Mogul : 1.8.5 (274361), CSD as541be (2020)
Xtriage (Phenix) : 1.13
EDS : 2.13.1
buster-report : 1.1.7 (2018)
Percentile statistics : 20191225.v01 (using entries in the PDB archive December 25th 2019)
Refmac : 5.8.0158
CCP4 : 7.0.044 (Gargrove)
Ideal geometry (proteins) : Engh & Huber (2001)
Ideal geometry (DNA, RNA) : Parkinson et al. (1996)
Validation Pipeline (wwPDB-VP) : 2.13.1

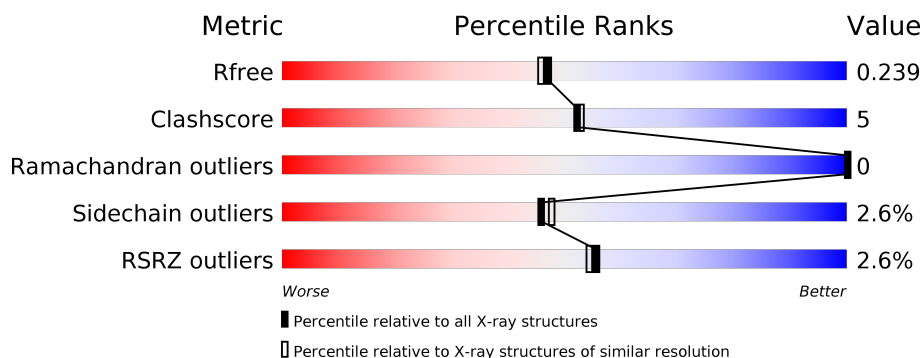
1 Overall quality at a glance

The following experimental techniques were used to determine the structure:

X-RAY DIFFRACTION

The reported resolution of this entry is 2.00 Å.

Percentile scores (ranging between 0-100) for global validation metrics of the entry are shown in the following graphic. The table shows the number of entries on which the scores are based.



Metric	Whole archive (#Entries)	Similar resolution (#Entries, resolution range(Å))
R_{free}	130704	8085 (2.00-2.00)
Clashscore	141614	9178 (2.00-2.00)
Ramachandran outliers	138981	9054 (2.00-2.00)
Sidechain outliers	138945	9053 (2.00-2.00)
RSRZ outliers	127900	7900 (2.00-2.00)

The table below summarises the geometric issues observed across the polymeric chains and their fit to the electron density. The red, orange, yellow and green segments on the lower bar indicate the fraction of residues that contain outliers for ≥ 3 , 2, 1 and 0 types of geometric quality criteria respectively. A grey segment represents the fraction of residues that are not modelled. The numeric value for each fraction is indicated below the corresponding segment, with a dot representing fractions $\leq 5\%$. The upper red bar (where present) indicates the fraction of residues that have poor fit to the electron density. The numeric value is given above the bar.

Mol	Chain	Length	Quality of chain
1	A	287	<div> <div style="width: 100%; height: 10px; background: linear-gradient(to right, red, orange, yellow, green, grey);"></div> <div style="display: flex; justify-content: space-between; margin-top: 5px;"> % 85% 9% • 5% </div> </div>
1	B	287	<div> <div style="width: 100%; height: 10px; background: linear-gradient(to right, red, orange, yellow, green, grey);"></div> <div style="display: flex; justify-content: space-between; margin-top: 5px;"> % 83% 11% 5% </div> </div>
1	C	287	<div> <div style="width: 100%; height: 10px; background: linear-gradient(to right, red, orange, yellow, green, grey);"></div> <div style="display: flex; justify-content: space-between; margin-top: 5px;"> 5% 82% 12% • 5% </div> </div>
2	D	3	<div> <div style="width: 100%; height: 10px; background: linear-gradient(to right, yellow, green, grey);"></div> <div style="text-align: center; margin-top: 5px;">100%</div> </div>
2	E	3	<div> <div style="width: 100%; height: 10px; background: linear-gradient(to right, yellow, green, grey);"></div> <div style="text-align: center; margin-top: 5px;">100%</div> </div>
2	F	3	<div> <div style="width: 100%; height: 10px; background: linear-gradient(to right, yellow, green, grey);"></div> <div style="text-align: center; margin-top: 5px;">100%</div> </div>

The following table lists non-polymeric compounds, carbohydrate monomers and non-standard residues in protein, DNA, RNA chains that are outliers for geometric or electron-density-fit criteria:

Mol	Type	Chain	Res	Chirality	Geometry	Clashes	Electron density
6	SO4	A	411	-	-	-	X
6	SO4	C	411	-	-	-	X

2 Entry composition

There are 7 unique types of molecules in this entry. The entry contains 7740 atoms, of which 0 are hydrogens and 0 are deuteriums.

In the tables below, the ZeroOcc column contains the number of atoms modelled with zero occupancy, the AltConf column contains the number of residues with at least one atom in alternate conformation and the Trace column contains the number of residues modelled with at most 2 atoms.

- Molecule 1 is a protein called Beta-1,4-galactosyltransferase 1.

Mol	Chain	Residues	Atoms					ZeroOcc	AltConf	Trace
1	A	273	Total	C	N	O	S	0	3	0
			2234	1430	388	405	11			
1	B	273	Total	C	N	O	S	0	5	0
			2245	1437	389	408	11			
1	C	273	Total	C	N	O	S	0	1	0
			2224	1424	386	403	11			

There are 51 discrepancies between the modelled and reference sequences:

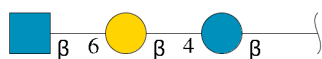
Chain	Residue	Modelled	Actual	Comment	Reference
A	112	ALA	-	expression tag	UNP P15291
A	113	SER	-	expression tag	UNP P15291
A	114	MET	-	expression tag	UNP P15291
A	115	THR	-	expression tag	UNP P15291
A	116	GLY	-	expression tag	UNP P15291
A	117	GLY	-	expression tag	UNP P15291
A	118	GLN	-	expression tag	UNP P15291
A	119	GLN	-	expression tag	UNP P15291
A	120	MET	-	expression tag	UNP P15291
A	121	GLY	-	expression tag	UNP P15291
A	122	ARG	-	expression tag	UNP P15291
A	123	GLY	-	expression tag	UNP P15291
A	124	SER	-	expression tag	UNP P15291
A	125	ALA	-	expression tag	UNP P15291
A	337	THR	ARG	engineered mutation	UNP P15291
A	338	THR	CYS	engineered mutation	UNP P15291
A	340	HIS	MET	engineered mutation	UNP P15291
B	112	ALA	-	expression tag	UNP P15291
B	113	SER	-	expression tag	UNP P15291
B	114	MET	-	expression tag	UNP P15291
B	115	THR	-	expression tag	UNP P15291
B	116	GLY	-	expression tag	UNP P15291
B	117	GLY	-	expression tag	UNP P15291

Continued on next page...

Continued from previous page...

Chain	Residue	Modelled	Actual	Comment	Reference
B	118	GLN	-	expression tag	UNP P15291
B	119	GLN	-	expression tag	UNP P15291
B	120	MET	-	expression tag	UNP P15291
B	121	GLY	-	expression tag	UNP P15291
B	122	ARG	-	expression tag	UNP P15291
B	123	GLY	-	expression tag	UNP P15291
B	124	SER	-	expression tag	UNP P15291
B	125	ALA	-	expression tag	UNP P15291
B	337	THR	ARG	engineered mutation	UNP P15291
B	338	THR	CYS	engineered mutation	UNP P15291
B	340	HIS	MET	engineered mutation	UNP P15291
C	112	ALA	-	expression tag	UNP P15291
C	113	SER	-	expression tag	UNP P15291
C	114	MET	-	expression tag	UNP P15291
C	115	THR	-	expression tag	UNP P15291
C	116	GLY	-	expression tag	UNP P15291
C	117	GLY	-	expression tag	UNP P15291
C	118	GLN	-	expression tag	UNP P15291
C	119	GLN	-	expression tag	UNP P15291
C	120	MET	-	expression tag	UNP P15291
C	121	GLY	-	expression tag	UNP P15291
C	122	ARG	-	expression tag	UNP P15291
C	123	GLY	-	expression tag	UNP P15291
C	124	SER	-	expression tag	UNP P15291
C	125	ALA	-	expression tag	UNP P15291
C	337	THR	ARG	engineered mutation	UNP P15291
C	338	THR	CYS	engineered mutation	UNP P15291
C	340	HIS	MET	engineered mutation	UNP P15291

- Molecule 2 is an oligosaccharide called 2-acetamido-2-deoxy-beta-D-glucopyranose-(1-6)-beta-D-galactopyranose-(1-4)-beta-D-glucopyranose.



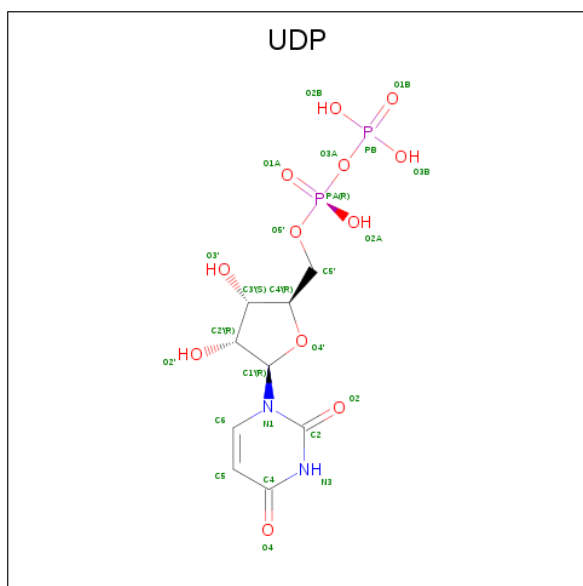
Mol	Chain	Residues	Atoms				ZeroOcc	AltConf	Trace
2	D	3	Total	C	N	O	0	0	0
			37	20	1	16			
2	E	3	Total	C	N	O	0	0	0
			37	20	1	16			

Continued on next page...

Continued from previous page...

Mol	Chain	Residues	Atoms				ZeroOcc	AltConf	Trace
2	F	3	Total	C	N	O	0	0	0
			37	20	1	16			

- Molecule 3 is URIDINE-5'-DIPHOSPHATE (three-letter code: UDP) (formula: $C_9H_{14}N_2O_{12}P_2$).



Mol	Chain	Residues	Atoms					ZeroOcc	AltConf
3	A	1	Total	C	N	O	P	0	0
			25	9	2	12	2		
3	B	1	Total	C	N	O	P	0	0
			25	9	2	12	2		
3	C	1	Total	C	N	O	P	0	0
			25	9	2	12	2		

- Molecule 4 is MANGANESE (II) ION (three-letter code: MN) (formula: Mn).

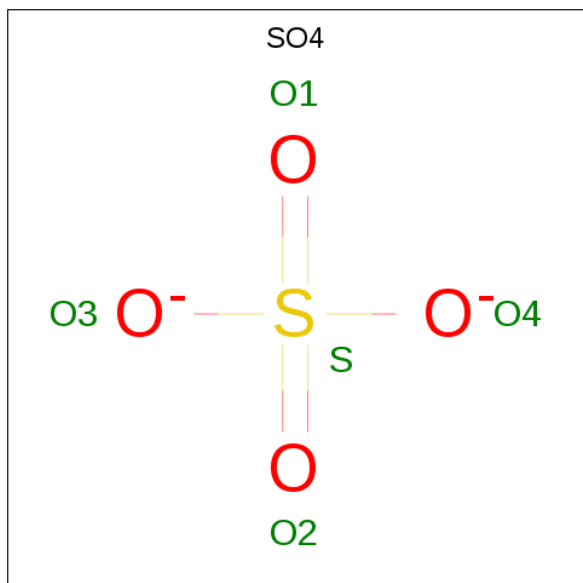
Mol	Chain	Residues	Atoms		ZeroOcc	AltConf
4	B	1	Total	Mn	0	0
			1	1		
4	A	1	Total	Mn	0	0
			1	1		
4	C	1	Total	Mn	0	0
			1	1		

- Molecule 5 is GLYCEROL (three-letter code: GOL) (formula: $C_3H_8O_3$).



Mol	Chain	Residues	Atoms			ZeroOcc	AltConf
5	A	1	Total	C	O	0	0
			6	3	3		
5	B	1	Total	C	O	0	0
			6	3	3		
5	B	1	Total	C	O	0	0
			6	3	3		
5	C	1	Total	C	O	0	0
			6	3	3		

- Molecule 6 is SULFATE ION (three-letter code: SO4) (formula: O₄S).



Mol	Chain	Residues	Atoms	ZeroOcc	AltConf
6	A	1	Total O S 5 4 1	0	0
6	A	1	Total O S 5 4 1	0	0
6	A	1	Total O S 5 4 1	0	0
6	A	1	Total O S 5 4 1	0	0
6	A	1	Total O S 5 4 1	0	0
6	A	1	Total O S 5 4 1	0	0
6	B	1	Total O S 5 4 1	0	0
6	B	1	Total O S 5 4 1	0	0
6	B	1	Total O S 5 4 1	0	0
6	B	1	Total O S 5 4 1	0	0
6	B	1	Total O S 5 4 1	0	0
6	B	1	Total O S 5 4 1	0	0
6	B	1	Total O S 5 4 1	0	0
6	B	1	Total O S 5 4 1	0	0
6	B	1	Total O S 5 4 1	0	0
6	C	1	Total O S 5 4 1	0	0
6	C	1	Total O S 5 4 1	0	0
6	C	1	Total O S 5 4 1	0	0
6	C	1	Total O S 5 4 1	0	0
6	C	1	Total O S 5 4 1	0	0
6	C	1	Total O S 5 4 1	0	0

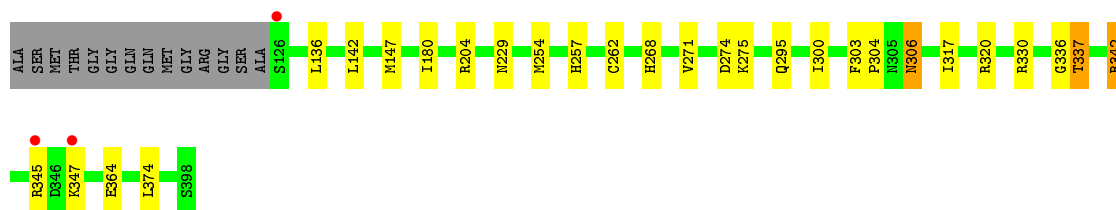
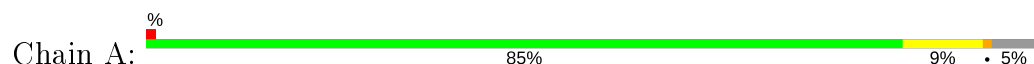
- Molecule 7 is water.

Mol	Chain	Residues	Atoms		ZeroOcc	AltConf
7	A	268	Total 268	O 268	0	0
7	B	284	Total 284	O 284	0	0
7	C	172	Total 172	O 172	0	0

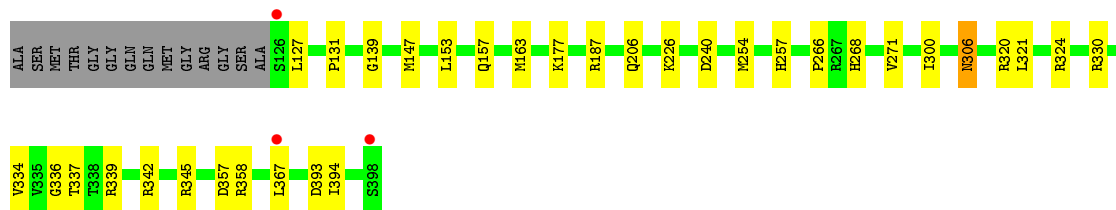
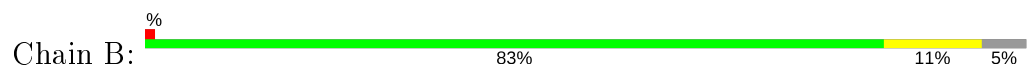
3 Residue-property plots [i](#)

These plots are drawn for all protein, RNA, DNA and oligosaccharide chains in the entry. The first graphic for a chain summarises the proportions of the various outlier classes displayed in the second graphic. The second graphic shows the sequence view annotated by issues in geometry and electron density. Residues are color-coded according to the number of geometric quality criteria for which they contain at least one outlier: green = 0, yellow = 1, orange = 2 and red = 3 or more. A red dot above a residue indicates a poor fit to the electron density ($RSRZ > 2$). Stretches of 2 or more consecutive residues without any outlier are shown as a green connector. Residues present in the sample, but not in the model, are shown in grey.

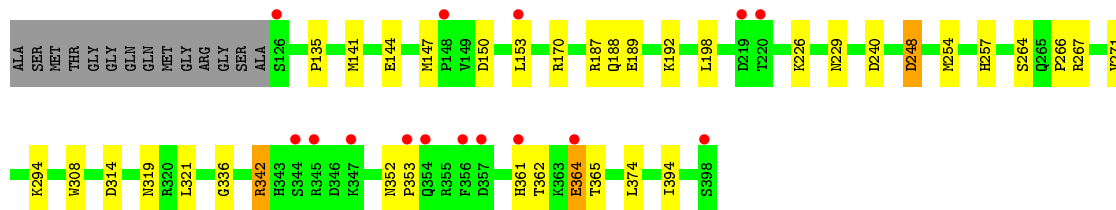
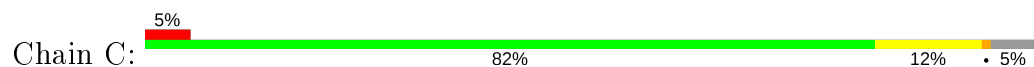
- Molecule 1: Beta-1,4-galactosyltransferase 1



- Molecule 1: Beta-1,4-galactosyltransferase 1



- Molecule 1: Beta-1,4-galactosyltransferase 1



- Molecule 2: 2-acetamido-2-deoxy-beta-D-glucopyranose-(1-6)-beta-D-galactopyranose-(1-4)-beta-D-glucopyranose



BGC1
GAL2
MAG3

- Molecule 2: 2-acetamido-2-deoxy-beta-D-glucopyranose-(1-6)-beta-D-galactopyranose-(1-4)-beta-D-glucopyranose

Chain E:  100%

BGC1
GAL2
MAG3

- Molecule 2: 2-acetamido-2-deoxy-beta-D-glucopyranose-(1-6)-beta-D-galactopyranose-(1-4)-beta-D-glucopyranose

Chain F:  100%

BGC1
GAL2
MAG3

4 Data and refinement statistics

Property	Value	Source
Space group	C 2 2 21	Depositor
Cell constants a, b, c, α , β , γ	107.32Å 196.20Å 143.59Å 90.00° 90.00° 90.00°	Depositor
Resolution (Å)	40.50 – 2.00 40.50 – 2.00	Depositor EDS
% Data completeness (in resolution range)	99.5 (40.50-2.00) 99.4 (40.50-2.00)	Depositor EDS
R_{merge}	(Not available)	Depositor
R_{sym}	0.05	Depositor
$\langle I/\sigma(I) \rangle$ ¹	2.75 (at 2.00Å)	Xtriage
Refinement program	REFMAC 5.5.0110	Depositor
R, R_{free}	0.200 , 0.240 0.200 , 0.239	Depositor DCC
R_{free} test set	5088 reflections (5.00%)	wwPDB-VP
Wilson B-factor (Å ²)	34.7	Xtriage
Anisotropy	0.030	Xtriage
Bulk solvent k_{sol} (e/Å ³), B_{sol} (Å ²)	0.37 , 44.5	EDS
L-test for twinning ²	$\langle L \rangle = 0.51$, $\langle L^2 \rangle = 0.35$	Xtriage
Estimated twinning fraction	0.000 for 1/2*h-1/2*k,-3/2*h-1/2*k,-l 0.011 for 1/2*h+1/2*k,3/2*h-1/2*k,-l	Xtriage
F_o, F_c correlation	0.96	EDS
Total number of atoms	7740	wwPDB-VP
Average B, all atoms (Å ²)	36.0	wwPDB-VP

Xtriage's analysis on translational NCS is as follows: *The largest off-origin peak in the Patterson function is 3.83% of the height of the origin peak. No significant pseudotranslation is detected.*

¹Intensities estimated from amplitudes.

²Theoretical values of $\langle |L| \rangle$, $\langle L^2 \rangle$ for acentric reflections are 0.5, 0.333 respectively for untwinned datasets, and 0.375, 0.2 for perfectly twinned datasets.

5 Model quality [i](#)

5.1 Standard geometry [i](#)

Bond lengths and bond angles in the following residue types are not validated in this section: GOL, UDP, BGC, NAG, MN, GAL, SO4

The Z score for a bond length (or angle) is the number of standard deviations the observed value is removed from the expected value. A bond length (or angle) with $|Z| > 5$ is considered an outlier worth inspection. RMSZ is the root-mean-square of all Z scores of the bond lengths (or angles).

Mol	Chain	Bond lengths		Bond angles	
		RMSZ	$\# Z > 5$	RMSZ	$\# Z > 5$
1	A	0.82	0/2305	0.84	3/3131 (0.1%)
1	B	0.85	0/2321	0.90	2/3154 (0.1%)
1	C	0.71	0/2289	0.79	2/3109 (0.1%)
All	All	0.80	0/6915	0.84	7/9394 (0.1%)

There are no bond length outliers.

All (7) bond angle outliers are listed below:

Mol	Chain	Res	Type	Atoms	Z	Observed(°)	Ideal(°)
1	A	262	CYS	CA-CB-SG	-5.63	103.86	114.00
1	A	180	ILE	CG1-CB-CG2	-5.61	99.07	111.40
1	A	204	ARG	NE-CZ-NH2	5.58	123.09	120.30
1	C	144	GLU	CB-CA-C	-5.21	99.99	110.40
1	B	187	ARG	NE-CZ-NH2	-5.12	117.74	120.30
1	B	393	ASP	CB-CG-OD2	5.08	122.87	118.30
1	C	248	ASP	CB-CG-OD2	5.05	122.84	118.30

There are no chirality outliers.

There are no planarity outliers.

5.2 Too-close contacts [i](#)

In the following table, the Non-H and H(model) columns list the number of non-hydrogen atoms and hydrogen atoms in the chain respectively. The H(added) column lists the number of hydrogen atoms added and optimized by MolProbity. The Clashes column lists the number of clashes within the asymmetric unit, whereas Symm-Clashes lists symmetry related clashes.

Mol	Chain	Non-H	H(model)	H(added)	Clashes	Symm-Clashes
1	A	2234	0	2180	20	0

Continued on next page...

Continued from previous page...

Mol	Chain	Non-H	H(model)	H(added)	Clashes	Symm-Clashes
1	B	2245	0	2186	29	0
1	C	2224	0	2168	27	0
2	D	37	0	33	0	0
2	E	37	0	33	0	0
2	F	37	0	33	0	0
3	A	25	0	11	0	0
3	B	25	0	11	0	0
3	C	25	0	11	2	0
4	A	1	0	0	0	0
4	B	1	0	0	0	0
4	C	1	0	0	0	0
5	A	6	0	8	0	0
5	B	12	0	16	1	0
5	C	6	0	8	0	0
6	A	30	0	0	0	0
6	B	40	0	0	0	0
6	C	30	0	0	2	0
7	A	268	0	0	5	0
7	B	284	0	0	7	0
7	C	172	0	0	7	0
All	All	7740	0	6698	75	0

The all-atom clashscore is defined as the number of clashes found per 1000 atoms (including hydrogen atoms). The all-atom clashscore for this structure is 5.

All (75) close contacts within the same asymmetric unit are listed below, sorted by their clash magnitude.

Atom-1	Atom-2	Interatomic distance (Å)	Clash overlap (Å)
1:B:334:VAL:O	1:B:337[B]:THR:HG23	1.71	0.89
1:C:240:ASP:HB2	7:C:617:HOH:O	1.73	0.87
1:B:337[B]:THR:HG21	1:C:135:PRO:HB2	1.66	0.77
1:A:142:LEU:HB3	7:A:598:HOH:O	1.84	0.76
1:C:141:MET:SD	7:C:614:HOH:O	2.43	0.76
1:A:254:MET:HB2	1:A:337:THR:HG22	1.66	0.75
1:A:337:THR:HG21	7:B:753:HOH:O	1.88	0.74
1:C:226:LYS:NZ	1:C:394:ILE:O	2.21	0.73
1:B:324:ARG:NH1	1:B:367:LEU:HD21	2.04	0.73
5:B:406:GOL:H31	7:B:504:HOH:O	1.89	0.72
1:B:306:ASN:HD22	1:B:306:ASN:H	1.39	0.70
1:A:254:MET:HB2	1:A:337:THR:CG2	2.23	0.69
1:C:294:LYS:NZ	7:C:515:HOH:O	2.25	0.68

Continued on next page...

Continued from previous page...

Atom-1	Atom-2	Interatomic distance (Å)	Clash overlap (Å)
1:B:177:LYS:NZ	1:B:240[B]:ASP:OD2	2.30	0.65
1:A:295:GLN:HG2	7:A:637:HOH:O	1.96	0.64
1:A:306:ASN:HD22	1:A:306:ASN:H	1.44	0.64
1:A:342:ARG:NH1	7:A:621:HOH:O	2.31	0.62
1:C:170:ARG:NH2	7:C:663:HOH:O	2.32	0.61
1:C:240:ASP:CB	7:C:617:HOH:O	2.39	0.60
1:B:271:VAL:HG22	1:B:336:GLY:HA3	1.83	0.60
1:C:308:TRP:O	1:C:352:ASN:HB2	2.02	0.59
1:B:254:MET:SD	1:B:337[A]:THR:HG22	2.46	0.56
1:B:324:ARG:HH11	1:B:367:LEU:HD21	1.70	0.55
1:B:163:MET:HE2	7:B:673:HOH:O	2.07	0.55
1:B:357:ASP:HB2	7:B:719:HOH:O	2.05	0.54
1:C:271:VAL:HG22	1:C:336:GLY:HA3	1.89	0.53
1:B:139:GLY:HA2	1:B:257[A]:HIS:CD2	2.43	0.53
1:A:257:HIS:HE1	7:A:582:HOH:O	1.92	0.52
1:B:268:HIS:HB3	1:B:330:ARG:HG2	1.93	0.51
1:B:306:ASN:ND2	1:B:306:ASN:H	2.07	0.50
1:A:306:ASN:HD22	1:A:306:ASN:N	2.06	0.50
1:B:139:GLY:HA2	1:B:257[A]:HIS:HD2	1.77	0.50
1:C:264:SER:HB3	6:C:412:SO4:O4	2.12	0.49
1:A:142:LEU:CB	7:A:598:HOH:O	2.51	0.48
1:C:342:ARG:HH11	1:C:342:ARG:HA	1.79	0.48
1:C:361:HIS:HD2	1:C:364:GLU:OE1	1.97	0.48
1:B:342:ARG:NH1	7:C:663:HOH:O	2.48	0.47
1:A:268:HIS:HB3	1:A:330:ARG:HG2	1.96	0.47
1:A:136:LEU:HA	1:C:254:MET:HE1	1.96	0.47
1:C:187:ARG:NH2	3:C:404:UDP:O2A	2.48	0.47
1:A:306:ASN:H	1:A:306:ASN:ND2	2.12	0.47
1:B:240[B]:ASP:OD1	7:B:564:HOH:O	2.21	0.47
1:B:306:ASN:OD1	1:B:358:ARG:NH1	2.48	0.47
1:C:267:ARG:NH2	6:C:411:SO4:O4	2.39	0.46
1:A:271:VAL:HG22	1:A:336:GLY:HA3	1.97	0.46
1:B:131:PRO:HD2	1:B:206:GLN:HE22	1.81	0.46
1:B:271:VAL:CG2	1:B:336:GLY:HA3	2.45	0.46
1:C:229:ASN:HB3	1:C:374:LEU:HD22	1.98	0.46
1:B:254:MET:SD	1:B:337[A]:THR:CG2	3.04	0.46
1:B:306:ASN:HD22	1:B:306:ASN:N	2.03	0.45
1:C:266:PRO:HG3	1:C:321:LEU:HD22	1.98	0.44
1:B:266:PRO:HG3	1:B:321:LEU:HD22	1.99	0.44
1:B:254:MET:SD	1:B:339:ARG:HG3	2.58	0.44
1:C:248:ASP:HB3	3:C:404:UDP:O3'	2.17	0.43

Continued on next page...

Continued from previous page...

Atom-1	Atom-2	Interatomic distance (Å)	Clash overlap (Å)
1:A:300:ILE:HB	1:A:320:ARG:HB3	2.01	0.43
1:B:306:ASN:ND2	1:B:306:ASN:N	2.66	0.43
1:C:198:LEU:HA	1:C:198:LEU:HD13	1.93	0.43
1:C:365:THR:HB	7:C:623:HOH:O	2.18	0.43
1:B:357:ASP:CB	7:B:719:HOH:O	2.65	0.42
1:B:300:ILE:HB	1:B:320:ARG:HB3	2.01	0.42
1:A:303:PHE:HB3	1:A:304:PRO:HD2	2.00	0.42
1:A:229:ASN:HB3	1:A:374:LEU:HD22	2.00	0.42
1:C:254:MET:HE3	1:C:254:MET:HB3	1.69	0.42
1:C:314:ASP:OD1	1:C:314:ASP:N	2.52	0.42
1:B:226:LYS:HD3	1:B:394:ILE:HB	2.02	0.41
1:C:352:ASN:HA	1:C:353:PRO:HD3	1.96	0.41
1:A:303:PHE:CD1	1:A:317:ILE:HG12	2.55	0.41
1:A:274:ASP:OD1	1:A:275:LYS:N	2.54	0.41
1:B:257[A]:HIS:HE1	7:B:758:HOH:O	2.03	0.41
1:C:319:ASN:HB2	1:C:362:THR:HG21	2.03	0.41
1:C:150:ASP:OD2	1:C:150:ASP:C	2.59	0.40
1:C:271:VAL:CG2	1:C:336:GLY:HA3	2.50	0.40
1:B:254:MET:HB2	1:B:337[B]:THR:OG1	2.22	0.40
1:A:306:ASN:N	1:A:306:ASN:ND2	2.70	0.40
1:C:188:GLN:O	1:C:192:LYS:HG3	2.21	0.40

There are no symmetry-related clashes.

5.3 Torsion angles [i](#)

5.3.1 Protein backbone [i](#)

In the following table, the Percentiles column shows the percent Ramachandran outliers of the chain as a percentile score with respect to all X-ray entries followed by that with respect to entries of similar resolution.

The Analysed column shows the number of residues for which the backbone conformation was analysed, and the total number of residues.

Mol	Chain	Analysed	Favoured	Allowed	Outliers	Percentiles	
1	A	274/287 (96%)	269 (98%)	5 (2%)	0	100	100
1	B	276/287 (96%)	274 (99%)	2 (1%)	0	100	100
1	C	272/287 (95%)	268 (98%)	4 (2%)	0	100	100
All	All	822/861 (96%)	811 (99%)	11 (1%)	0	100	100

There are no Ramachandran outliers to report.

5.3.2 Protein sidechains ⓘ

In the following table, the Percentiles column shows the percent sidechain outliers of the chain as a percentile score with respect to all X-ray entries followed by that with respect to entries of similar resolution.

The Analysed column shows the number of residues for which the sidechain conformation was analysed, and the total number of residues.

Mol	Chain	Analysed	Rotameric	Outliers	Percentiles	
1	A	247/252 (98%)	240 (97%)	7 (3%)	43	44
1	B	249/252 (99%)	243 (98%)	6 (2%)	49	51
1	C	245/252 (97%)	239 (98%)	6 (2%)	49	51
All	All	741/756 (98%)	722 (97%)	19 (3%)	46	48

All (19) residues with a non-rotameric sidechain are listed below:

Mol	Chain	Res	Type
1	A	147	MET
1	A	306	ASN
1	A	337	THR
1	A	342	ARG
1	A	345	ARG
1	A	347	LYS
1	A	364	GLU
1	B	127	LEU
1	B	147	MET
1	B	153	LEU
1	B	157	GLN
1	B	306	ASN
1	B	345	ARG
1	C	147	MET
1	C	153	LEU
1	C	189	GLU
1	C	257	HIS
1	C	342	ARG
1	C	364	GLU

Some sidechains can be flipped to improve hydrogen bonding and reduce clashes. All (7) such sidechains are listed below:

Mol	Chain	Res	Type
1	A	160	ASN
1	A	257	HIS
1	A	306	ASN
1	B	186	ASN
1	B	206	GLN
1	B	306	ASN
1	C	361	HIS

5.3.3 RNA ⓘ

There are no RNA molecules in this entry.

5.4 Non-standard residues in protein, DNA, RNA chains ⓘ

There are no non-standard protein/DNA/RNA residues in this entry.

5.5 Carbohydrates ⓘ

9 monosaccharides are modelled in this entry.

In the following table, the Counts columns list the number of bonds (or angles) for which Mogul statistics could be retrieved, the number of bonds (or angles) that are observed in the model and the number of bonds (or angles) that are defined in the Chemical Component Dictionary. The Link column lists molecule types, if any, to which the group is linked. The Z score for a bond length (or angle) is the number of standard deviations the observed value is removed from the expected value. A bond length (or angle) with $|Z| > 2$ is considered an outlier worth inspection. RMSZ is the root-mean-square of all Z scores of the bond lengths (or angles).

Mol	Type	Chain	Res	Link	Bond lengths			Bond angles		
					Counts	RMSZ	$\# Z > 2$	Counts	RMSZ	$\# Z > 2$
2	BGC	D	1	2	12,12,12	0.67	0	17,17,17	1.22	3 (17%)
2	GAL	D	2	2	11,11,12	0.77	0	15,15,17	1.77	4 (26%)
2	NAG	D	3	2	14,14,15	0.57	0	17,19,21	0.93	1 (5%)
2	BGC	E	1	2	12,12,12	0.58	0	17,17,17	1.42	3 (17%)
2	GAL	E	2	2	11,11,12	0.75	0	15,15,17	1.61	3 (20%)
2	NAG	E	3	2	14,14,15	0.71	0	17,19,21	1.08	2 (11%)
2	BGC	F	1	2	12,12,12	0.61	0	17,17,17	1.12	1 (5%)
2	GAL	F	2	2	11,11,12	0.69	0	15,15,17	1.21	1 (6%)
2	NAG	F	3	2	14,14,15	0.62	0	17,19,21	1.19	1 (5%)

In the following table, the Chirals column lists the number of chiral outliers, the number of chiral centers analysed, the number of these observed in the model and the number defined in the Chemical Component Dictionary. Similar counts are reported in the Torsion and Rings columns. '-' means no outliers of that kind were identified.

Mol	Type	Chain	Res	Link	Chirals	Torsions	Rings
2	BGC	D	1	2	-	0/2/22/22	0/1/1/1
2	GAL	D	2	2	-	0/2/19/22	0/1/1/1
2	NAG	D	3	2	-	0/6/23/26	0/1/1/1
2	BGC	E	1	2	-	0/2/22/22	0/1/1/1
2	GAL	E	2	2	-	0/2/19/22	0/1/1/1
2	NAG	E	3	2	-	0/6/23/26	0/1/1/1
2	BGC	F	1	2	-	2/2/22/22	0/1/1/1
2	GAL	F	2	2	-	0/2/19/22	0/1/1/1
2	NAG	F	3	2	-	0/6/23/26	0/1/1/1

There are no bond length outliers.

All (19) bond angle outliers are listed below:

Mol	Chain	Res	Type	Atoms	Z	Observed(°)	Ideal(°)
2	D	2	GAL	C1-O5-C5	3.79	117.32	112.19
2	E	1	BGC	C1-O5-C5	-3.54	106.99	113.66
2	F	3	NAG	C1-O5-C5	3.38	116.78	112.19
2	E	2	GAL	C1-O5-C5	3.05	116.33	112.19
2	E	2	GAL	C2-C3-C4	-2.91	105.86	110.89
2	F	2	GAL	C1-O5-C5	2.85	116.05	112.19
2	D	1	BGC	O5-C1-C2	2.58	114.88	110.28
2	E	3	NAG	C8-C7-N2	2.54	120.39	116.10
2	D	2	GAL	C1-C2-C3	2.48	112.71	109.67
2	E	1	BGC	O5-C5-C6	2.36	112.30	106.44
2	D	1	BGC	C1-C2-C3	2.34	115.17	110.31
2	D	1	BGC	C3-C4-C5	-2.25	106.22	110.24
2	E	1	BGC	C3-C4-C5	-2.25	106.23	110.24
2	E	2	GAL	C1-C2-C3	2.22	112.40	109.67
2	D	2	GAL	O6-C6-C5	-2.18	103.81	111.29
2	D	3	NAG	O3-C3-C2	-2.16	104.99	109.47
2	E	3	NAG	C1-O5-C5	2.16	115.12	112.19
2	F	1	BGC	C4-C3-C2	2.04	114.38	110.82
2	D	2	GAL	C3-C4-C5	-2.03	106.61	110.24

There are no chirality outliers.

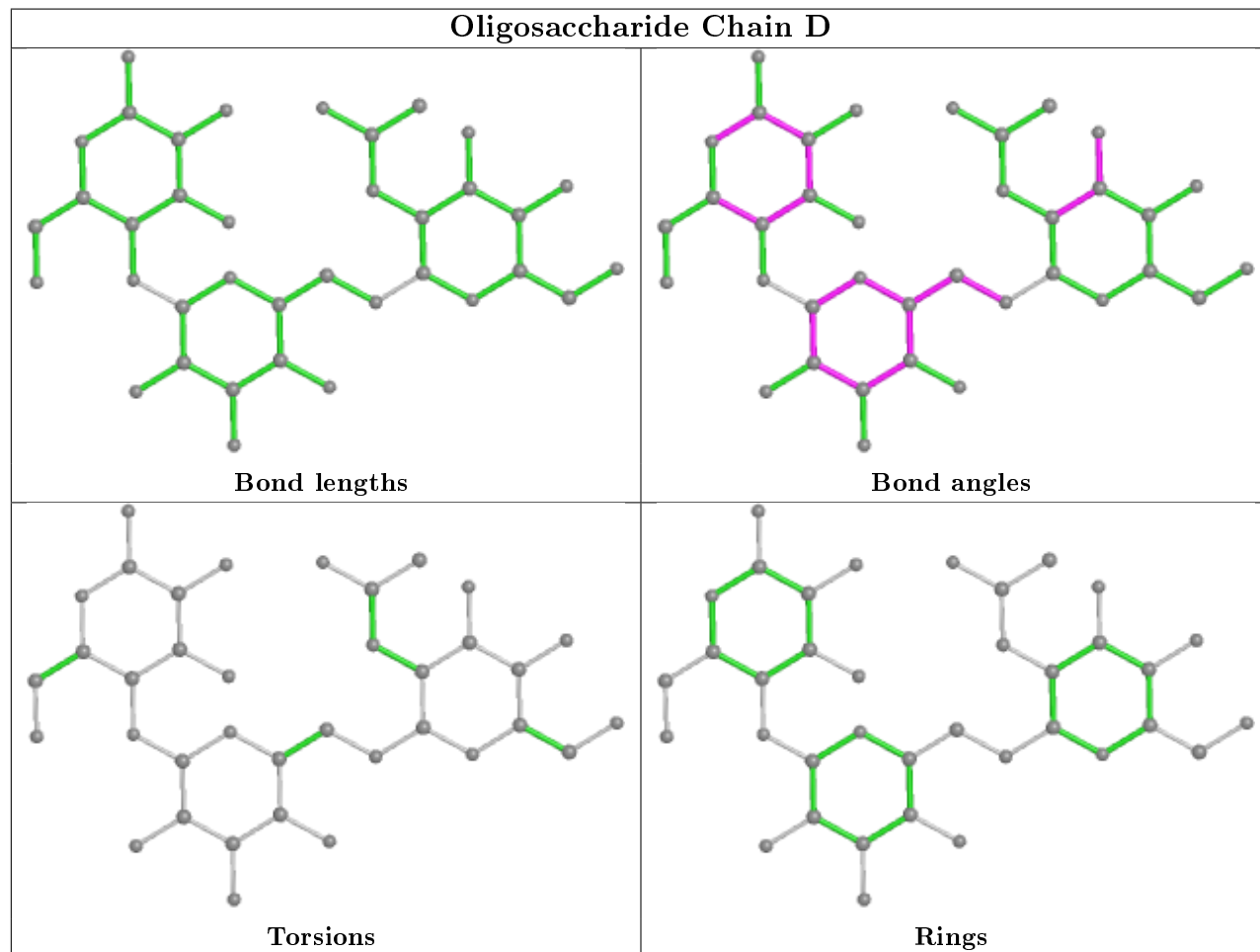
All (2) torsion outliers are listed below:

Mol	Chain	Res	Type	Atoms
2	F	1	BGC	O5-C5-C6-O6
2	F	1	BGC	C4-C5-C6-O6

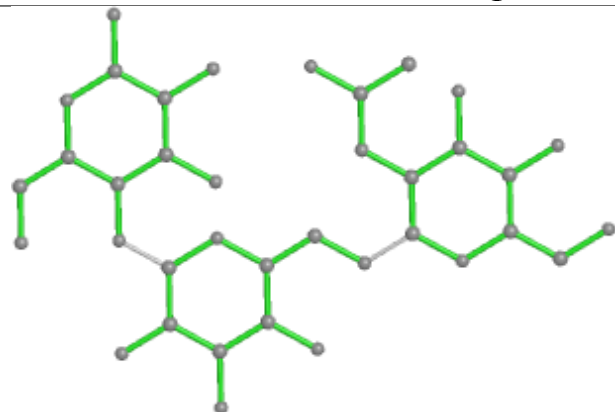
There are no ring outliers.

No monomer is involved in short contacts.

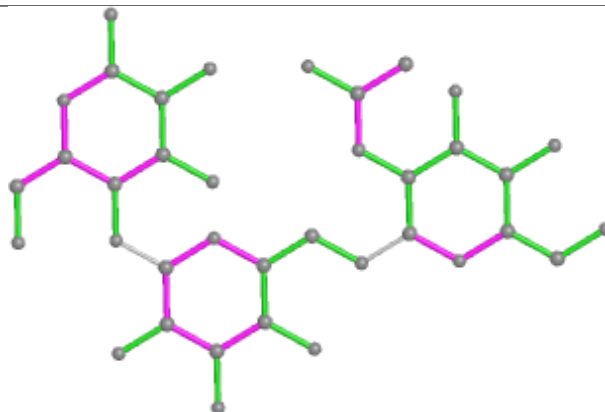
The following is a two-dimensional graphical depiction of Mogul quality analysis of bond lengths, bond angles, torsion angles, and ring geometry for oligosaccharide.



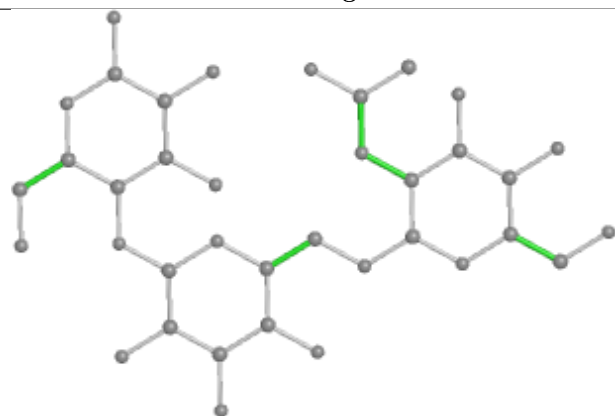
Oligosaccharide Chain E



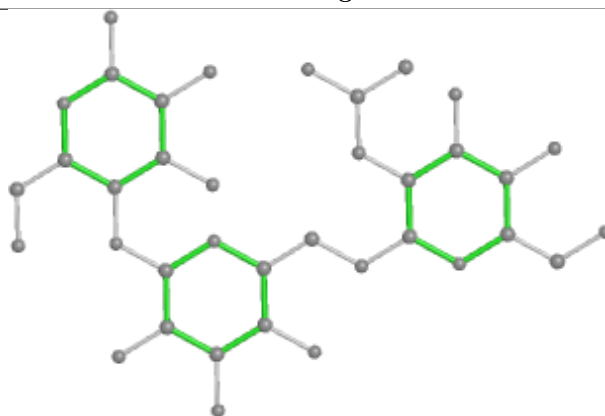
Bond lengths



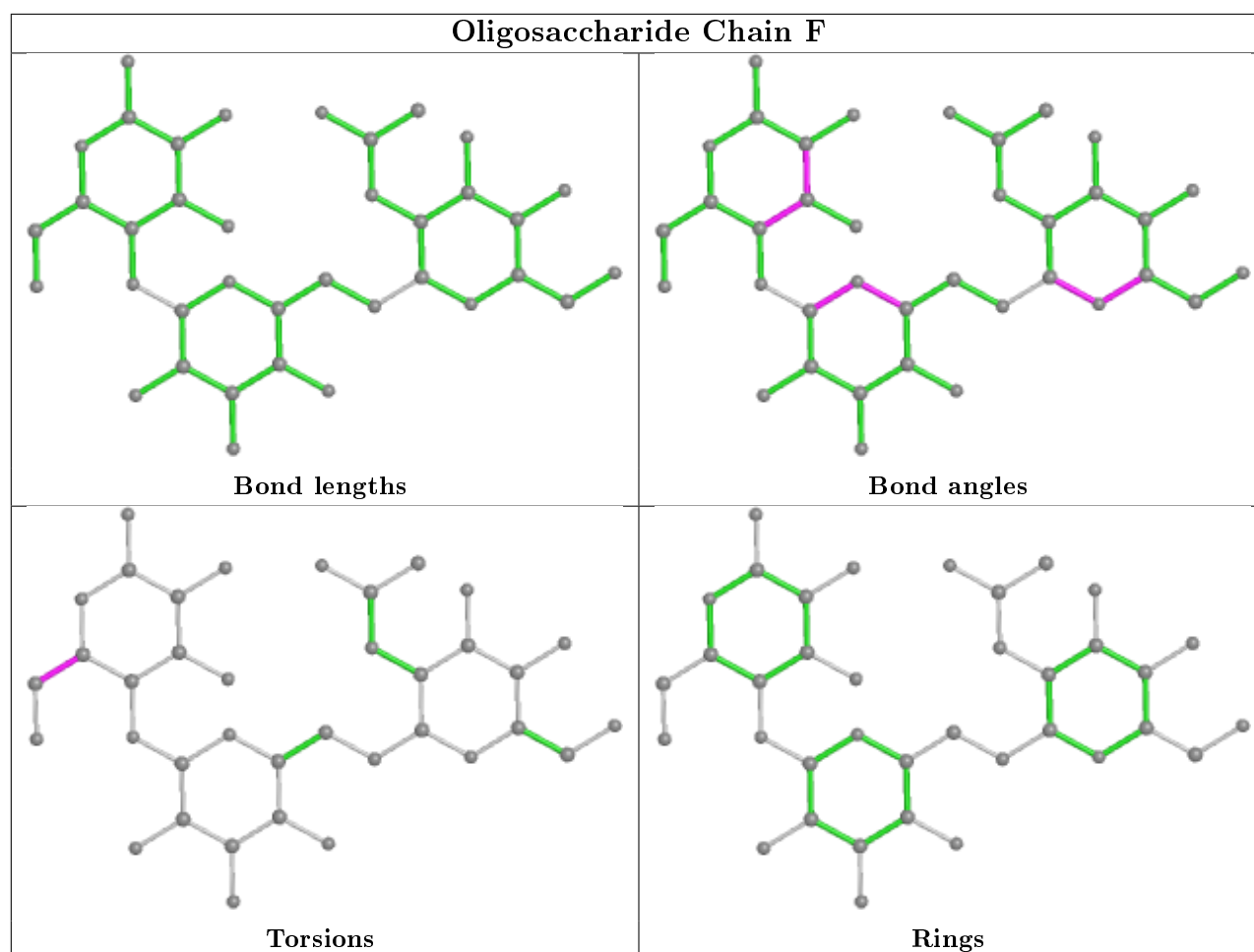
Bond angles



Torsions



Rings



5.6 Ligand geometry [i](#)

Of 30 ligands modelled in this entry, 3 are monoatomic - leaving 27 for Mogul analysis.

In the following table, the Counts columns list the number of bonds (or angles) for which Mogul statistics could be retrieved, the number of bonds (or angles) that are observed in the model and the number of bonds (or angles) that are defined in the Chemical Component Dictionary. The Link column lists molecule types, if any, to which the group is linked. The Z score for a bond length (or angle) is the number of standard deviations the observed value is removed from the expected value. A bond length (or angle) with $|Z| > 2$ is considered an outlier worth inspection. RMSZ is the root-mean-square of all Z scores of the bond lengths (or angles).

Mol	Type	Chain	Res	Link	Bond lengths			Bond angles		
					Counts	RMSZ	$\# Z > 2$	Counts	RMSZ	$\# Z > 2$
6	SO4	B	412	-	4,4,4	0.22	0	6,6,6	0.34	0
6	SO4	A	407	-	4,4,4	0.26	0	6,6,6	0.47	0
6	SO4	A	409	-	4,4,4	0.16	0	6,6,6	0.59	0
6	SO4	C	408	-	4,4,4	0.21	0	6,6,6	0.34	0
5	GOL	B	407	-	5,5,5	0.60	0	5,5,5	1.20	1 (20%)
6	SO4	B	408	-	4,4,4	0.20	0	6,6,6	0.52	0

Mol	Type	Chain	Res	Link	Bond lengths			Bond angles		
					Counts	RMSZ	# Z > 2	Counts	RMSZ	# Z > 2
6	SO4	A	408	-	4,4,4	0.21	0	6,6,6	0.46	0
6	SO4	B	411	-	4,4,4	0.20	0	6,6,6	0.30	0
6	SO4	B	410	-	4,4,4	0.21	0	6,6,6	0.53	0
5	GOL	B	406	-	5,5,5	0.47	0	5,5,5	2.18	1 (20%)
6	SO4	B	413	-	4,4,4	0.11	0	6,6,6	0.50	0
6	SO4	A	412	-	4,4,4	0.17	0	6,6,6	0.16	0
6	SO4	A	411	-	4,4,4	0.15	0	6,6,6	0.24	0
6	SO4	B	415	-	4,4,4	0.12	0	6,6,6	0.56	0
5	GOL	A	406	-	5,5,5	0.43	0	5,5,5	0.97	0
3	UDP	A	404	4	20,26,26	1.52	4 (20%)	25,40,40	1.33	3 (12%)
6	SO4	C	410	-	4,4,4	0.12	0	6,6,6	0.12	0
6	SO4	A	410	-	4,4,4	0.14	0	6,6,6	0.19	0
6	SO4	C	407	-	4,4,4	0.25	0	6,6,6	0.46	0
6	SO4	B	409	-	4,4,4	0.26	0	6,6,6	1.03	0
6	SO4	C	412	-	4,4,4	0.20	0	6,6,6	0.17	0
5	GOL	C	406	-	5,5,5	0.20	0	5,5,5	0.83	0
6	SO4	B	414	-	4,4,4	0.21	0	6,6,6	0.61	0
6	SO4	C	409	-	4,4,4	0.16	0	6,6,6	0.34	0
6	SO4	C	411	-	4,4,4	0.23	0	6,6,6	0.41	0
3	UDP	B	404	4	20,26,26	1.33	3 (15%)	25,40,40	1.35	4 (16%)
3	UDP	C	404	4	20,26,26	1.17	1 (5%)	25,40,40	0.97	1 (4%)

In the following table, the Chirals column lists the number of chiral outliers, the number of chiral centers analysed, the number of these observed in the model and the number defined in the Chemical Component Dictionary. Similar counts are reported in the Torsion and Rings columns. '-' means no outliers of that kind were identified.

Mol	Type	Chain	Res	Link	Chirals	Torsions	Rings
5	GOL	C	406	-	-	2/4/4/4	-
5	GOL	A	406	-	-	2/4/4/4	-
5	GOL	B	406	-	-	1/4/4/4	-
3	UDP	A	404	4	-	3/14/32/32	0/2/2/2
3	UDP	B	404	4	-	3/14/32/32	0/2/2/2
5	GOL	B	407	-	-	1/4/4/4	-
3	UDP	C	404	4	-	4/14/32/32	0/2/2/2

All (8) bond length outliers are listed below:

Mol	Chain	Res	Type	Atoms	Z	Observed(Å)	Ideal(Å)
3	A	404	UDP	C6-N1	3.72	1.40	1.35

Continued on next page...

Continued from previous page...

Mol	Chain	Res	Type	Atoms	Z	Observed(Å)	Ideal(Å)
3	C	404	UDP	C4-N3	3.67	1.39	1.33
3	B	404	UDP	C4-N3	3.60	1.39	1.33
3	A	404	UDP	C4-N3	2.99	1.38	1.33
3	B	404	UDP	C6-N1	2.50	1.38	1.35
3	A	404	UDP	C6-C5	2.34	1.43	1.38
3	A	404	UDP	PA-O5'	2.21	1.68	1.59
3	B	404	UDP	C6-C5	2.06	1.42	1.38

All (10) bond angle outliers are listed below:

Mol	Chain	Res	Type	Atoms	Z	Observed(°)	Ideal(°)
5	B	406	GOL	C3-C2-C1	-4.44	94.44	111.70
3	B	404	UDP	PA-O3A-PB	-3.46	120.96	132.83
3	A	404	UDP	O5'-C5'-C4'	3.12	119.73	108.99
3	C	404	UDP	O3B-PB-O3A	2.69	113.66	104.64
5	B	407	GOL	O2-C2-C1	-2.28	99.09	109.12
3	A	404	UDP	PA-O3A-PB	-2.27	125.03	132.83
3	A	404	UDP	O4'-C1'-C2'	-2.27	103.61	106.93
3	B	404	UDP	O2B-PB-O3A	2.21	112.06	104.64
3	B	404	UDP	O3B-PB-O3A	2.19	111.97	104.64
3	B	404	UDP	O5'-PA-O1A	2.08	117.18	109.07

There are no chirality outliers.

All (16) torsion outliers are listed below:

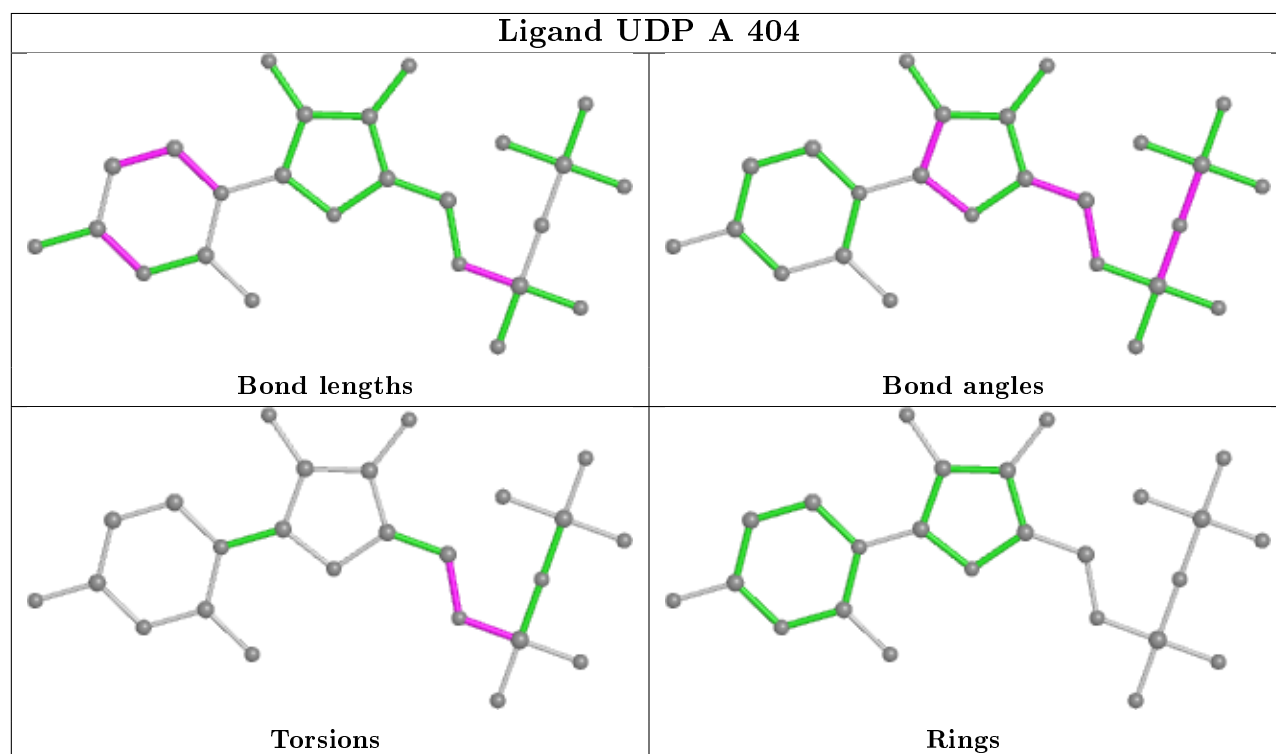
Mol	Chain	Res	Type	Atoms
3	A	404	UDP	C5'-O5'-PA-O1A
3	A	404	UDP	C5'-O5'-PA-O3A
3	B	404	UDP	C5'-O5'-PA-O1A
5	B	406	GOL	C1-C2-C3-O3
5	C	406	GOL	O1-C1-C2-C3
3	B	404	UDP	PA-O3A-PB-O1B
5	A	406	GOL	O1-C1-C2-C3
5	B	407	GOL	O2-C2-C3-O3
3	A	404	UDP	C4'-C5'-O5'-PA
3	B	404	UDP	C4'-C5'-O5'-PA
3	C	404	UDP	C4'-C5'-O5'-PA
3	C	404	UDP	C5'-O5'-PA-O3A
3	C	404	UDP	C5'-O5'-PA-O2A
5	A	406	GOL	C1-C2-C3-O3
5	C	406	GOL	O1-C1-C2-O2
3	C	404	UDP	C5'-O5'-PA-O1A

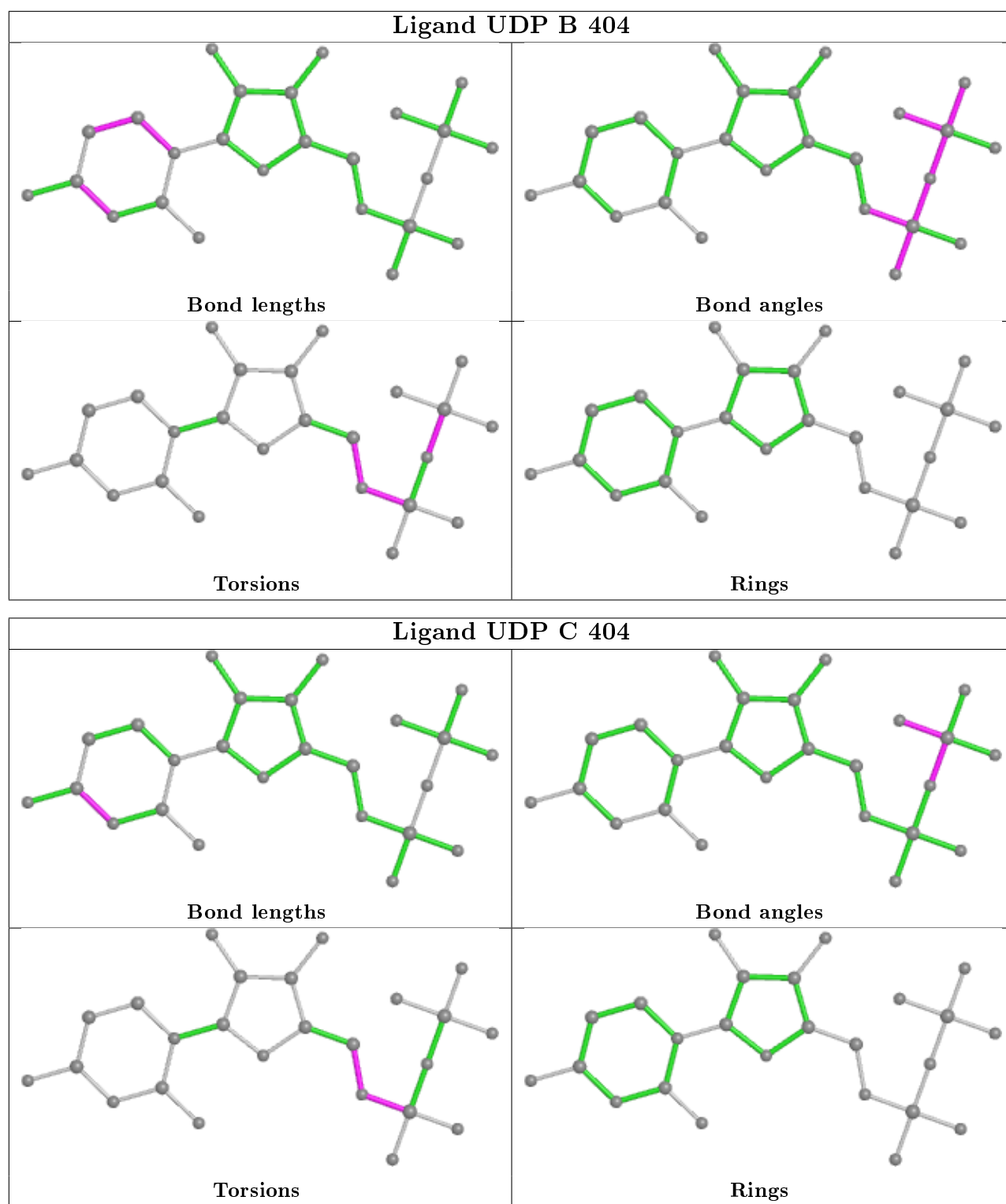
There are no ring outliers.

4 monomers are involved in 5 short contacts:

Mol	Chain	Res	Type	Clashes	Symm-Clashes
5	B	406	GOL	1	0
6	C	412	SO4	1	0
6	C	411	SO4	1	0
3	C	404	UDP	2	0

The following is a two-dimensional graphical depiction of Mogul quality analysis of bond lengths, bond angles, torsion angles, and ring geometry for all instances of the Ligand of Interest. In addition, ligands with molecular weight > 250 and outliers as shown on the validation Tables will also be included. For torsion angles, if less than 5% of the Mogul distribution of torsion angles is within 10 degrees of the torsion angle in question, then that torsion angle is considered an outlier. Any bond that is central to one or more torsion angles identified as an outlier by Mogul will be highlighted in the graph. For rings, the root-mean-square deviation (RMSD) between the ring in question and similar rings identified by Mogul is calculated over all ring torsion angles. If the average RMSD is greater than 60 degrees and the minimal RMSD between the ring in question and any Mogul-identified rings is also greater than 60 degrees, then that ring is considered an outlier. The outliers are highlighted in purple. The color gray indicates Mogul did not find sufficient equivalents in the CSD to analyse the geometry.





5.7 Other polymers [i](#)

There are no such residues in this entry.

5.8 Polymer linkage issues ⓘ

There are no chain breaks in this entry.

6 Fit of model and data ⓘ

6.1 Protein, DNA and RNA chains ⓘ

In the following table, the column labelled ‘#RSRZ> 2’ contains the number (and percentage) of RSRZ outliers, followed by percent RSRZ outliers for the chain as percentile scores relative to all X-ray entries and entries of similar resolution. The OWAB column contains the minimum, median, 95th percentile and maximum values of the occupancy-weighted average B-factor per residue. The column labelled ‘Q< 0.9’ lists the number of (and percentage) of residues with an average occupancy less than 0.9.

Mol	Chain	Analysed	<RSRZ>	#RSRZ>2	OWAB(Å ²)	Q<0.9
1	A	273/287 (95%)	-0.09	3 (1%) 80 79	21, 30, 48, 64	0
1	B	273/287 (95%)	-0.11	3 (1%) 80 79	20, 27, 41, 58	0
1	C	273/287 (95%)	0.20	15 (5%) 25 24	26, 39, 63, 75	0
All	All	819/861 (95%)	-0.00	21 (2%) 56 54	20, 32, 54, 75	0

All (21) RSRZ outliers are listed below:

Mol	Chain	Res	Type	RSRZ
1	B	126	SER	5.8
1	C	126	SER	5.3
1	C	398	SER	4.3
1	C	347	LYS	4.2
1	A	126	SER	4.0
1	C	364	GLU	3.4
1	C	357	ASP	3.4
1	A	347	LYS	3.2
1	C	353	PRO	3.2
1	A	345	ARG	3.1
1	C	361	HIS	3.1
1	C	219	ASP	2.9
1	C	344	SER	2.8
1	C	153	LEU	2.7
1	C	148	PRO	2.6
1	C	220	THR	2.5
1	C	354	GLN	2.4
1	B	398	SER	2.4
1	B	367	LEU	2.2
1	C	345	ARG	2.2
1	C	356	PHE	2.1

6.2 Non-standard residues in protein, DNA, RNA chains ⓘ

There are no non-standard protein/DNA/RNA residues in this entry.

6.3 Carbohydrates ⓘ

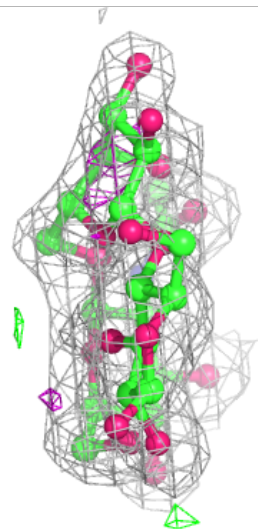
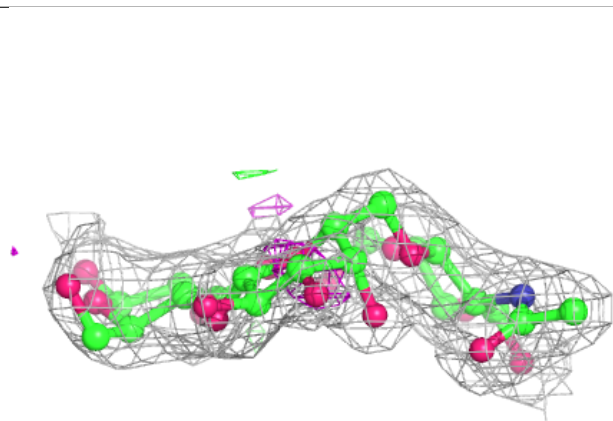
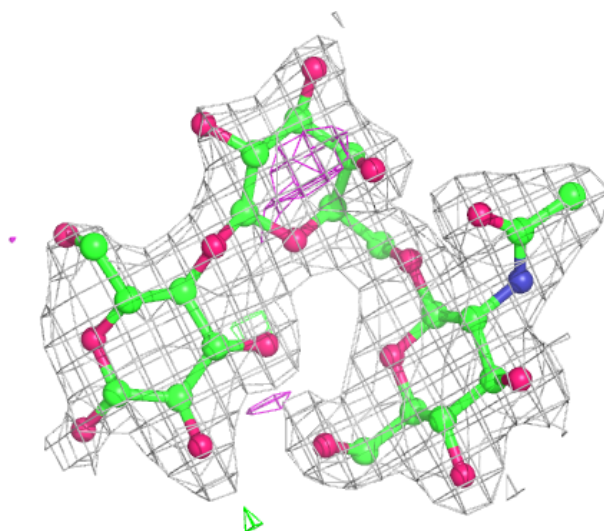
In the following table, the Atoms column lists the number of modelled atoms in the group and the number defined in the chemical component dictionary. The B-factors column lists the minimum, median, 95th percentile and maximum values of B factors of atoms in the group. The column labelled 'Q< 0.9' lists the number of atoms with occupancy less than 0.9.

Mol	Type	Chain	Res	Atoms	RSCC	RSR	B-factors(Å ²)	Q<0.9
2	GAL	F	2	11/12	0.73	0.25	65,81,83,84	0
2	BGC	F	1	12/12	0.80	0.26	86,89,91,92	0
2	BGC	D	1	12/12	0.84	0.24	47,55,64,64	0
2	GAL	D	2	11/12	0.90	0.31	35,50,56,61	0
2	BGC	E	1	12/12	0.90	0.25	40,52,61,65	0
2	NAG	F	3	14/15	0.93	0.12	47,54,57,58	0
2	GAL	E	2	11/12	0.96	0.20	30,41,50,54	0
2	NAG	D	3	14/15	0.97	0.08	27,31,36,38	0
2	NAG	E	3	14/15	0.97	0.08	22,26,30,31	0

The following is a graphical depiction of the model fit to experimental electron density for oligosaccharide. Each fit is shown from different orientation to approximate a three-dimensional view.

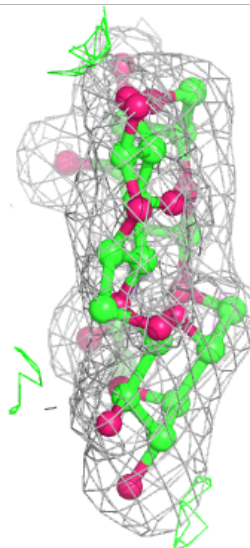
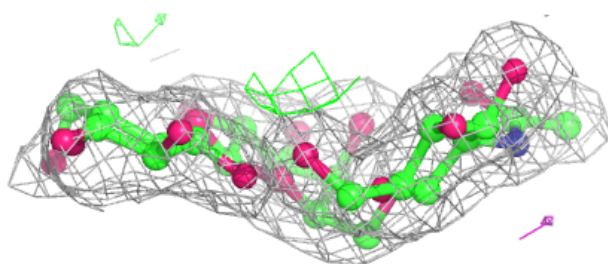
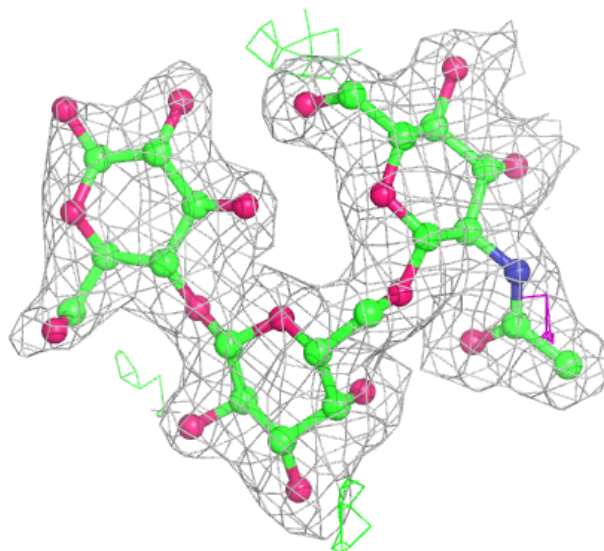
Electron density around Chain D:

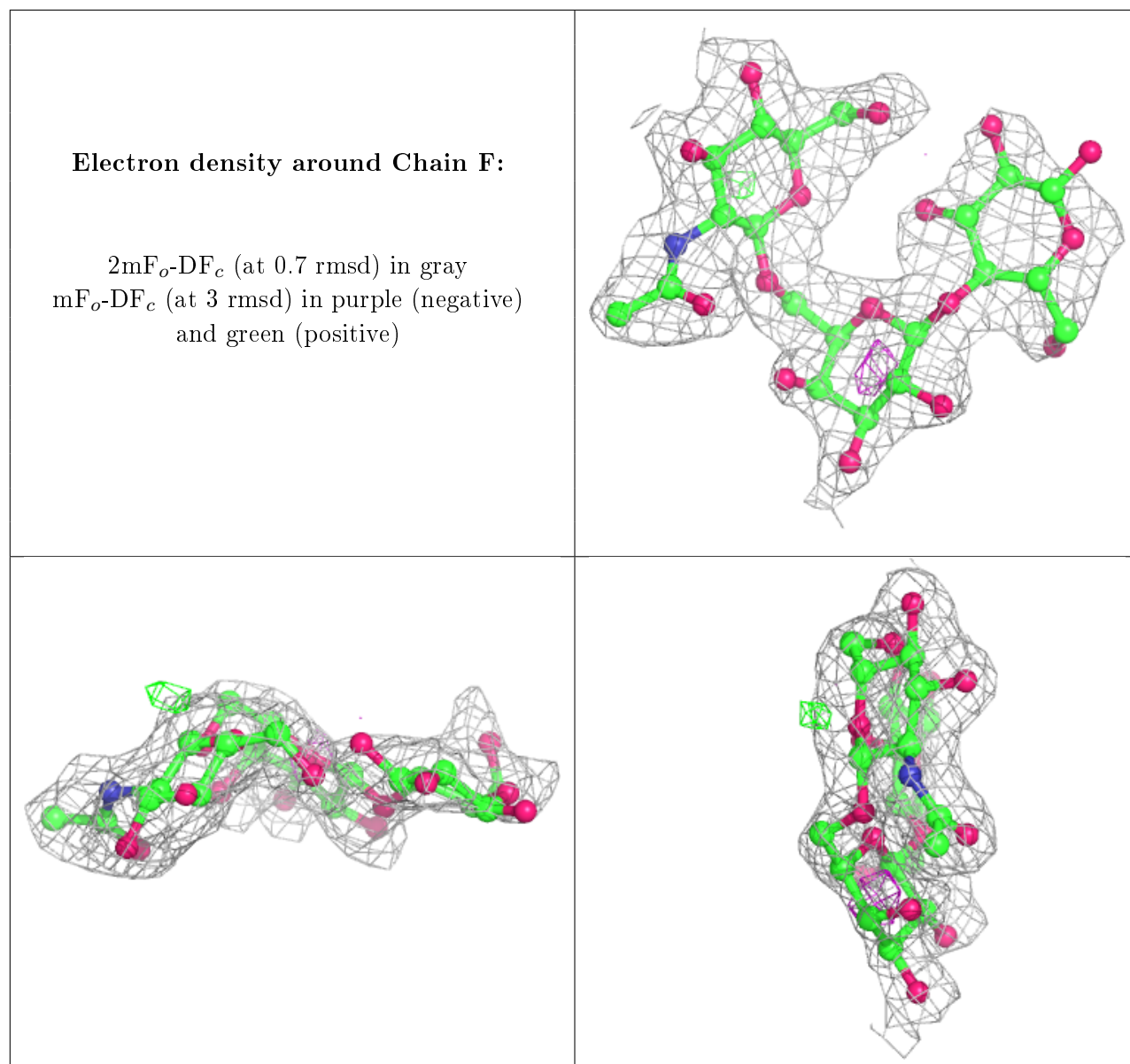
$2mF_o-DF_c$ (at 0.7 rmsd) in gray
 mF_o-DF_c (at 3 rmsd) in purple (negative)
and green (positive)



Electron density around Chain E:

$2mF_o-DF_c$ (at 0.7 rmsd) in gray
 mF_o-DF_c (at 3 rmsd) in purple (negative)
and green (positive)





6.4 Ligands [i](#)

In the following table, the Atoms column lists the number of modelled atoms in the group and the number defined in the chemical component dictionary. The B-factors column lists the minimum, median, 95th percentile and maximum values of B factors of atoms in the group. The column labelled 'Q<0.9' lists the number of atoms with occupancy less than 0.9.

Mol	Type	Chain	Res	Atoms	RSCC	RSR	B-factors(Å ²)	Q<0.9
6	SO4	A	411	5/5	0.60	0.58	133,134,135,135	0
6	SO4	C	408	5/5	0.68	0.24	105,105,107,107	0
6	SO4	A	412	5/5	0.69	0.27	93,96,97,98	0
6	SO4	B	412	5/5	0.74	0.35	92,96,96,97	0
6	SO4	C	412	5/5	0.74	0.37	111,112,112,112	0

Continued on next page...

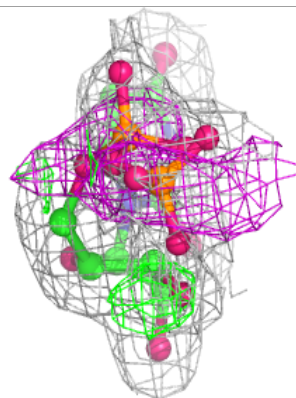
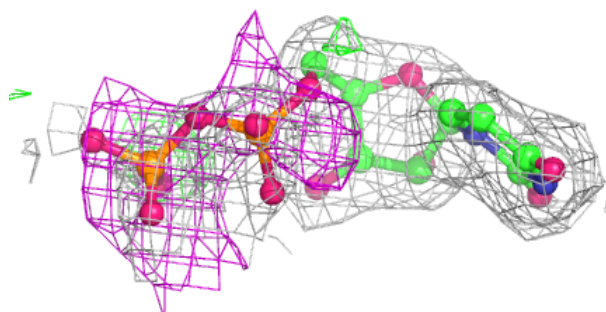
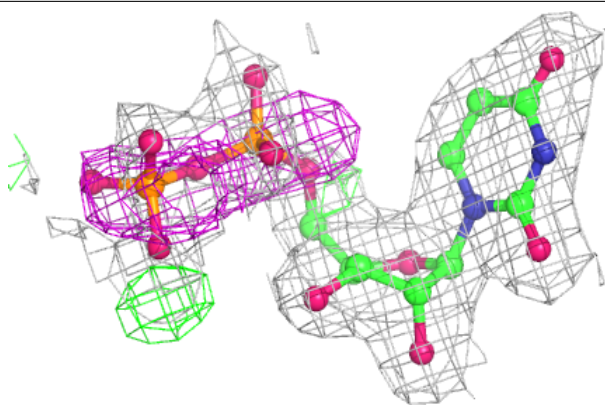
Continued from previous page...

Mol	Type	Chain	Res	Atoms	RSCC	RSR	B-factors(\AA^2)	Q<0.9
6	SO4	B	413	5/5	0.75	0.29	93,97,99,99	0
6	SO4	C	411	5/5	0.78	0.44	94,94,96,97	0
3	UDP	A	404	25/25	0.79	0.19	29,35,89,93	0
6	SO4	C	409	5/5	0.82	0.21	96,98,100,100	0
3	UDP	C	404	25/25	0.82	0.22	39,48,116,117	0
3	UDP	B	404	25/25	0.84	0.19	22,28,95,98	0
6	SO4	C	410	5/5	0.85	0.17	119,120,120,121	0
6	SO4	A	409	5/5	0.85	0.26	75,78,80,81	0
6	SO4	B	414	5/5	0.85	0.29	68,73,75,78	0
5	GOL	C	406	6/6	0.86	0.20	48,57,61,61	0
6	SO4	B	410	5/5	0.87	0.26	79,80,80,83	0
6	SO4	A	408	5/5	0.90	0.19	58,62,66,69	0
5	GOL	A	406	6/6	0.90	0.21	32,43,48,56	0
6	SO4	B	415	5/5	0.91	0.23	71,71,76,80	0
6	SO4	A	410	5/5	0.91	0.26	92,92,93,95	0
6	SO4	B	409	5/5	0.93	0.29	42,51,54,58	0
4	MN	C	405	1/1	0.93	0.08	63,63,63,63	0
6	SO4	B	411	5/5	0.94	0.23	77,77,80,81	0
5	GOL	B	406	6/6	0.94	0.13	27,38,44,49	0
6	SO4	A	407	5/5	0.95	0.09	59,60,63,64	0
5	GOL	B	407	6/6	0.97	0.11	25,30,32,36	0
6	SO4	C	407	5/5	0.97	0.20	47,53,55,60	0
6	SO4	B	408	5/5	0.98	0.13	65,67,67,69	0
4	MN	B	405	1/1	0.98	0.04	40,40,40,40	0
4	MN	A	405	1/1	0.99	0.11	53,53,53,53	0

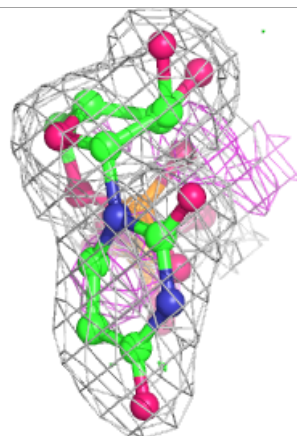
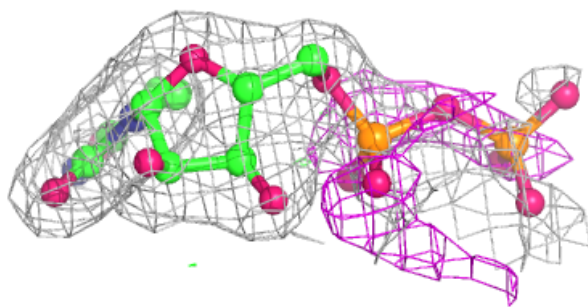
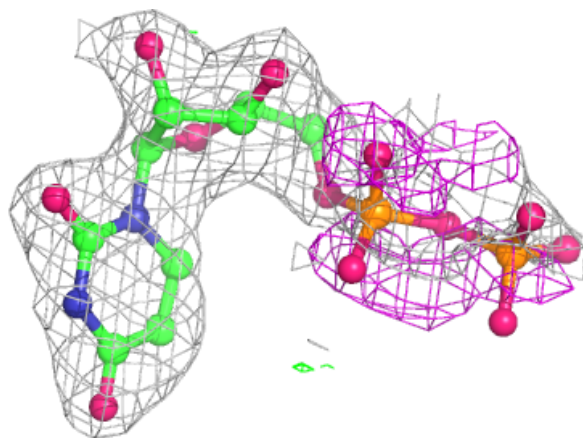
The following is a graphical depiction of the model fit to experimental electron density of all instances of the Ligand of Interest. In addition, ligands with molecular weight > 250 and outliers as shown on the geometry validation Tables will also be included. Each fit is shown from different orientation to approximate a three-dimensional view.

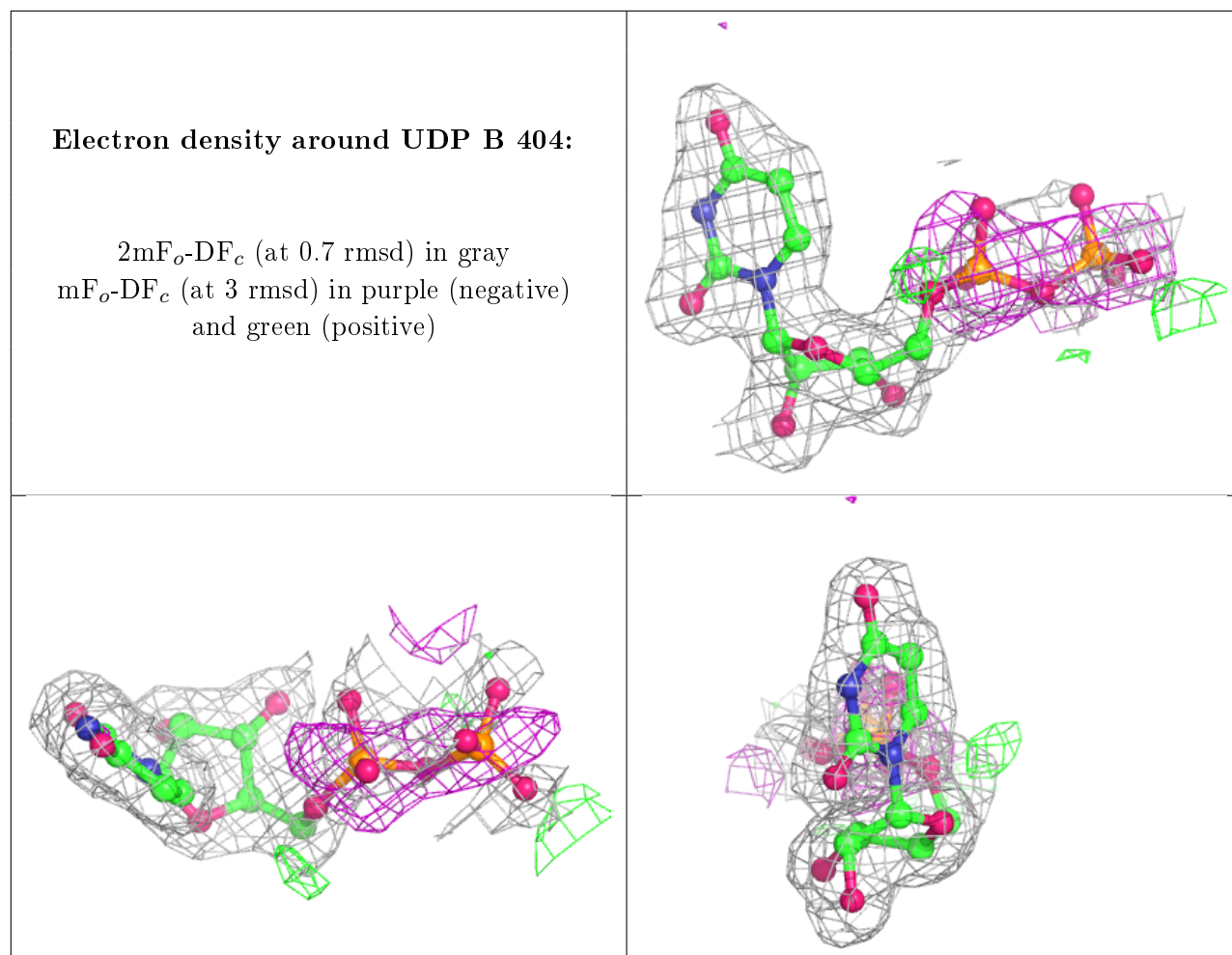
Electron density around UDP A 404:

$2mF_o-DF_c$ (at 0.7 rmsd) in gray
 mF_o-DF_c (at 3 rmsd) in purple (negative)
and green (positive)

**Electron density around UDP C 404:**

$2mF_o-DF_c$ (at 0.7 rmsd) in gray
 mF_o-DF_c (at 3 rmsd) in purple (negative)
and green (positive)





6.5 Other polymers ⓘ

There are no such residues in this entry.