



Full wwPDB X-ray Structure Validation Report ⓘ

May 16, 2020 – 02:20 am BST

PDB ID : 5EE4
Title : The crystal structure of HpuA from *Kingella denitrificans* in complex with human haemoglobin
Authors : Wong, C.T.; Hare, S.A.
Deposited on : 2015-10-22
Resolution : 2.30 Å(reported)

This is a Full wwPDB X-ray Structure Validation Report for a publicly released PDB entry.

We welcome your comments at validation@mail.wwpdb.org

A user guide is available at

<https://www.wwpdb.org/validation/2017/XrayValidationReportHelp>

with specific help available everywhere you see the ⓘ symbol.

The following versions of software and data (see [references ⓘ](#)) were used in the production of this report:

MolProbity	:	4.02b-467
Mogul	:	1.8.5 (274361), CSD as541be (2020)
Xtriage (Phenix)	:	1.13
EDS	:	2.11
buster-report	:	1.1.7 (2018)
Percentile statistics	:	20191225.v01 (using entries in the PDB archive December 25th 2019)
Refmac	:	5.8.0158
CCP4	:	7.0.044 (Gargrove)
Ideal geometry (proteins)	:	Engh & Huber (2001)
Ideal geometry (DNA, RNA)	:	Parkinson et al. (1996)
Validation Pipeline (wwPDB-VP)	:	2.11

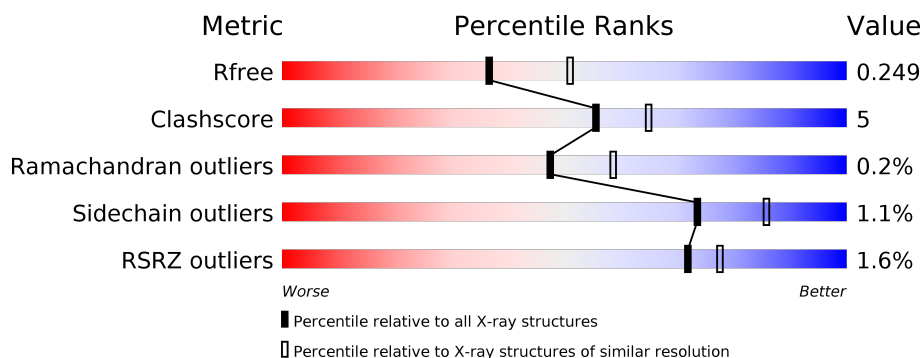
1 Overall quality at a glance

The following experimental techniques were used to determine the structure:

X-RAY DIFFRACTION

The reported resolution of this entry is 2.30 Å.

Percentile scores (ranging between 0-100) for global validation metrics of the entry are shown in the following graphic. The table shows the number of entries on which the scores are based.



Metric	Whole archive (#Entries)	Similar resolution (#Entries, resolution range(Å))
R_{free}	130704	5042 (2.30-2.30)
Clashscore	141614	5643 (2.30-2.30)
Ramachandran outliers	138981	5575 (2.30-2.30)
Sidechain outliers	138945	5575 (2.30-2.30)
RSRZ outliers	127900	4938 (2.30-2.30)

The table below summarises the geometric issues observed across the polymeric chains and their fit to the electron density. The red, orange, yellow and green segments on the lower bar indicate the fraction of residues that contain outliers for ≥ 3 , 2, 1 and 0 types of geometric quality criteria respectively. A grey segment represents the fraction of residues that are not modelled. The numeric value for each fraction is indicated below the corresponding segment, with a dot representing fractions $\leq 5\%$. The upper red bar (where present) indicates the fraction of residues that have poor fit to the electron density. The numeric value is given above the bar.

Mol	Chain	Length	Quality of chain
1	A	322	<div> <div style="width: 100%; height: 10px; background: linear-gradient(to right, red 1%, orange 1%, yellow 12%, green 80%, grey 8%);"></div> <div style="display: flex; justify-content: space-between; width: 100%;"> % 80% 12% 8% </div> </div>
1	B	322	<div> <div style="width: 100%; height: 10px; background: linear-gradient(to right, red 5%, orange 1%, yellow 8%, green 84%, grey 7%);"></div> <div style="display: flex; justify-content: space-between; width: 100%;"> 5% 84% 8% 7% </div> </div>
2	C	141	<div> <div style="width: 100%; height: 10px; background: linear-gradient(to right, green 91%, yellow 9%);"></div> <div style="display: flex; justify-content: space-between; width: 100%;"> 91% 9% </div> </div>
2	E	141	<div> <div style="width: 100%; height: 10px; background: linear-gradient(to right, green 90%, yellow 10%);"></div> <div style="display: flex; justify-content: space-between; width: 100%;"> 90% 10% </div> </div>
3	D	146	<div> <div style="width: 100%; height: 10px; background: linear-gradient(to right, green 87%, yellow 13%);"></div> <div style="display: flex; justify-content: space-between; width: 100%;"> 87% 13% </div> </div>
3	F	146	<div> <div style="width: 100%; height: 10px; background: linear-gradient(to right, green 89%, yellow 8%, grey 3%);"></div> <div style="display: flex; justify-content: space-between; width: 100%;"> 89% 8% . </div> </div>

2 Entry composition [i](#)

There are 7 unique types of molecules in this entry. The entry contains 9308 atoms, of which 0 are hydrogens and 0 are deuteriums.

In the tables below, the ZeroOcc column contains the number of atoms modelled with zero occupancy, the AltConf column contains the number of residues with at least one atom in alternate conformation and the Trace column contains the number of residues modelled with at most 2 atoms.

- Molecule 1 is a protein called HpuA.

Mol	Chain	Residues	Atoms					ZeroOcc	AltConf	Trace
1	A	297	Total	C	N	O	S	0	0	0
			2195	1358	379	448	10			
1	B	298	Total	C	N	O	S	0	0	0
			2206	1364	383	449	10			

There are 6 discrepancies between the modelled and reference sequences:

Chain	Residue	Modelled	Actual	Comment	Reference
A	1	GLY	-	expression tag	UNP F0EX68
A	2	PRO	-	expression tag	UNP F0EX68
A	5	THR	SER	cloning artifact	UNP F0EX68
B	1	GLY	-	expression tag	UNP F0EX68
B	2	PRO	-	expression tag	UNP F0EX68
B	5	THR	SER	cloning artifact	UNP F0EX68

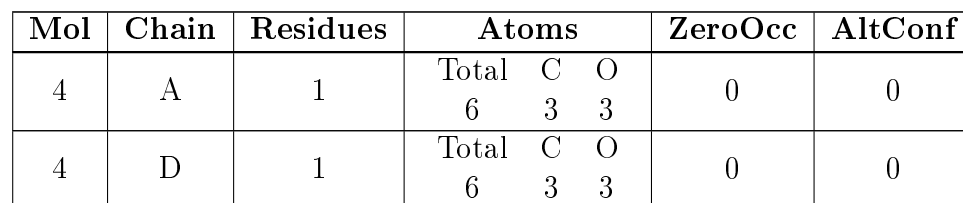
- Molecule 2 is a protein called Hemoglobin subunit alpha.

Mol	Chain	Residues	Atoms					ZeroOcc	AltConf	Trace
2	C	141	Total	C	N	O	S	0	0	0
			1068	685	187	193	3			
2	E	141	Total	C	N	O	S	0	0	0
			1068	685	187	193	3			

- Molecule 3 is a protein called Hemoglobin subunit beta.

Mol	Chain	Residues	Atoms					ZeroOcc	AltConf	Trace
3	D	146	Total	C	N	O	S	0	0	0
			1122	724	195	200	3			
3	F	141	Total	C	N	O	S	0	0	0
			1083	698	188	194	3			

- Molecule 4 is GLYCEROL (three-letter code: GOL) (formula: C₃H₈O₃).



- # HEM

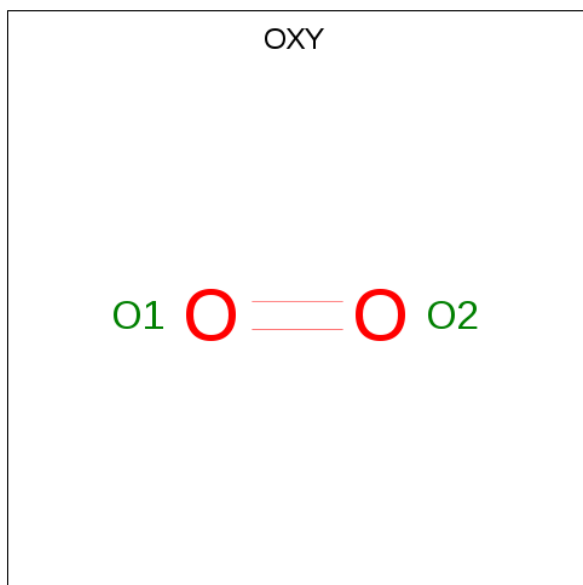
Mol	Chain	Residues	Atoms					ZeroOcc	AltConf
5	C	1	Total 43	C 34	Fe 1	N 4	O 4	0	0

Continued on next page...

Continued from previous page...

Mol	Chain	Residues	Atoms					ZeroOcc	AltConf
5	D	1	Total	C	Fe	N	O	0	0
			43	34	1	4	4		
5	E	1	Total	C	Fe	N	O	0	0
			43	34	1	4	4		
5	F	1	Total	C	Fe	N	O	0	0
			43	34	1	4	4		

- Molecule 6 is OXYGEN MOLECULE (three-letter code: OXY) (formula: O₂).



Mol	Chain	Residues	Atoms		ZeroOcc	AltConf
6	C	1	Total	O	0	0
			2	2		
6	D	1	Total	O	0	0
			2	2		
6	E	1	Total	O	0	0
			2	2		
6	F	1	Total	O	0	0
			2	2		

- Molecule 7 is water.

Mol	Chain	Residues	Atoms		ZeroOcc	AltConf
7	A	115	Total	O	0	0
			115	115		
7	B	72	Total	O	0	0
			72	72		

Continued on next page...

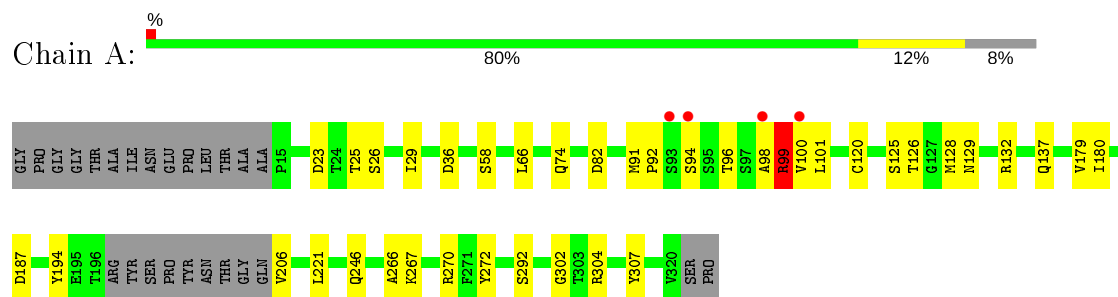
Continued from previous page...

Mol	Chain	Residues	Atoms		ZeroOcc	AltConf
7	C	57	Total 57	O 57	0	0
7	D	43	Total 43	O 43	0	0
7	E	55	Total 55	O 55	0	0
7	F	32	Total 32	O 32	0	0

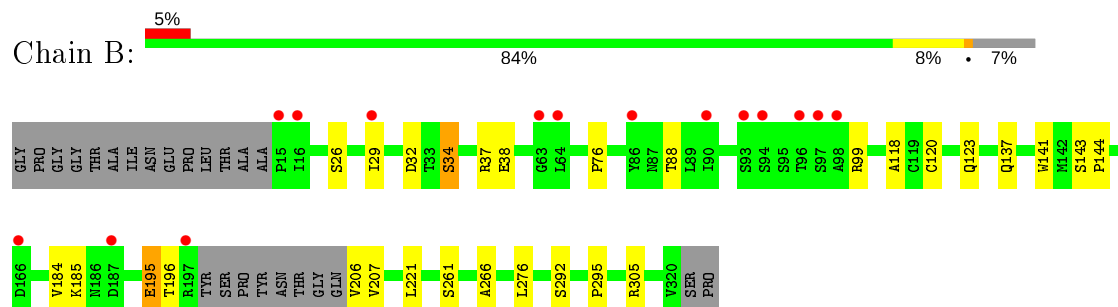
3 Residue-property plots [i](#)

These plots are drawn for all protein, RNA and DNA chains in the entry. The first graphic for a chain summarises the proportions of the various outlier classes displayed in the second graphic. The second graphic shows the sequence view annotated by issues in geometry and electron density. Residues are color-coded according to the number of geometric quality criteria for which they contain at least one outlier: green = 0, yellow = 1, orange = 2 and red = 3 or more. A red dot above a residue indicates a poor fit to the electron density ($RSRZ > 2$). Stretches of 2 or more consecutive residues without any outlier are shown as a green connector. Residues present in the sample, but not in the model, are shown in grey.

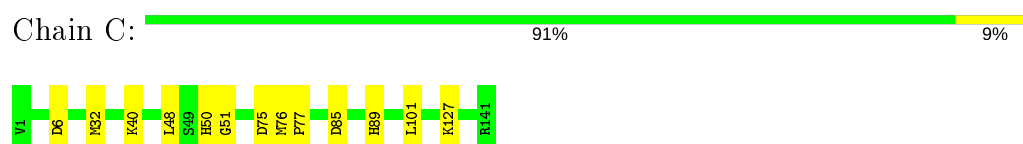
- Molecule 1: HpuA



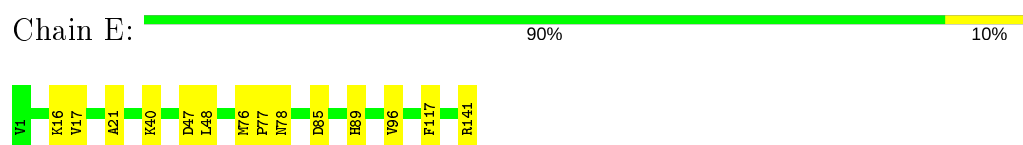
- Molecule 1: HpuA



- Molecule 2: Hemoglobin subunit alpha



- Molecule 2: Hemoglobin subunit alpha

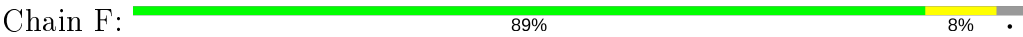


- Molecule 3: Hemoglobin subunit beta





● Molecule 3: Hemoglobin subunit beta



4 Data and refinement statistics

Property	Value	Source
Space group	P 1 21 1	Depositor
Cell constants a, b, c, α , β , γ	54.79 Å 87.21 Å 124.32 Å 90.00° 98.13° 90.00°	Depositor
Resolution (Å)	123.07 – 2.30 41.10 – 2.30	Depositor EDS
% Data completeness (in resolution range)	96.7 (123.07-2.30) 96.7 (41.10-2.30)	Depositor EDS
R_{merge}	(Not available)	Depositor
R_{sym}	0.17	Depositor
$\langle I/\sigma(I) \rangle$ ¹	2.06 (at 2.29 Å)	Xtriage
Refinement program	REFMAC 5.8.0069	Depositor
R, R_{free}	0.202 , 0.244 0.207 , 0.249	Depositor DCC
R_{free} test set	2491 reflections (5.00%)	wwPDB-VP
Wilson B-factor (Å ²)	28.4	Xtriage
Anisotropy	0.669	Xtriage
Bulk solvent k_{sol} (e/Å ³), B_{sol} (Å ²)	0.33 , 34.4	EDS
L-test for twinning ²	$\langle L \rangle = 0.50$, $\langle L^2 \rangle = 0.33$	Xtriage
Estimated twinning fraction	No twinning to report.	Xtriage
F_o, F_c correlation	0.93	EDS
Total number of atoms	9308	wwPDB-VP
Average B, all atoms (Å ²)	33.0	wwPDB-VP

Xtriage's analysis on translational NCS is as follows: *The largest off-origin peak in the Patterson function is 5.18% of the height of the origin peak. No significant pseudotranslation is detected.*

¹Intensities estimated from amplitudes.

²Theoretical values of $\langle |L| \rangle$, $\langle L^2 \rangle$ for acentric reflections are 0.5, 0.333 respectively for untwinned datasets, and 0.375, 0.2 for perfectly twinned datasets.

5 Model quality

5.1 Standard geometry

Bond lengths and bond angles in the following residue types are not validated in this section: GOL, OXY, HEM

The Z score for a bond length (or angle) is the number of standard deviations the observed value is removed from the expected value. A bond length (or angle) with $|Z| > 5$ is considered an outlier worth inspection. RMSZ is the root-mean-square of all Z scores of the bond lengths (or angles).

Mol	Chain	Bond lengths		Bond angles	
		RMSZ	# Z >5	RMSZ	# Z >5
1	A	0.67	0/2239	0.75	2/3041 (0.1%)
1	B	0.63	0/2250	0.74	2/3055 (0.1%)
2	C	0.64	0/1096	0.71	0/1491
2	E	0.64	0/1096	0.73	0/1491
3	D	0.65	0/1152	0.71	0/1566
3	F	0.64	0/1111	0.66	0/1508
All	All	0.65	0/8944	0.72	4/12152 (0.0%)

Chiral center outliers are detected by calculating the chiral volume of a chiral center and verifying if the center is modelled as a planar moiety or with the opposite hand. A planarity outlier is detected by checking planarity of atoms in a peptide group, atoms in a mainchain group or atoms of a sidechain that are expected to be planar.

Mol	Chain	#Chirality outliers	#Planarity outliers
1	A	0	1
2	C	0	1
All	All	0	2

There are no bond length outliers.

All (4) bond angle outliers are listed below:

Mol	Chain	Res	Type	Atoms	Z	Observed(°)	Ideal(°)
1	B	37	ARG	NE-CZ-NH1	6.37	123.48	120.30
1	B	37	ARG	NE-CZ-NH2	-6.33	117.14	120.30
1	A	82	ASP	CB-CG-OD2	-5.71	113.17	118.30
1	A	99	ARG	NE-CZ-NH1	5.58	123.09	120.30

There are no chirality outliers.

All (2) planarity outliers are listed below:

Mol	Chain	Res	Type	Group
1	A	126	THR	Peptide
2	C	51	GLY	Peptide

5.2 Too-close contacts ⓘ

In the following table, the Non-H and H(model) columns list the number of non-hydrogen atoms and hydrogen atoms in the chain respectively. The H(added) column lists the number of hydrogen atoms added and optimized by MolProbity. The Clashes column lists the number of clashes within the asymmetric unit, whereas Symm-Clashes lists symmetry related clashes.

Mol	Chain	Non-H	H(model)	H(added)	Clashes	Symm-Clashes
1	A	2195	0	2124	30	1
1	B	2206	0	2137	18	1
2	C	1068	0	1073	8	0
2	E	1068	0	1073	9	0
3	D	1122	0	1118	11	0
3	F	1083	0	1074	8	0
4	A	6	0	8	3	0
4	D	6	0	8	0	0
5	C	43	0	30	2	0
5	D	43	0	30	2	0
5	E	43	0	30	4	0
5	F	43	0	30	5	0
6	C	2	0	0	0	0
6	D	2	0	0	0	0
6	E	2	0	0	0	0
6	F	2	0	0	0	0
7	A	115	0	0	3	0
7	B	72	0	0	2	0
7	C	57	0	0	1	0
7	D	43	0	0	2	0
7	E	55	0	0	2	0
7	F	32	0	0	1	0
All	All	9308	0	8735	90	1

The all-atom clashscore is defined as the number of clashes found per 1000 atoms (including hydrogen atoms). The all-atom clashscore for this structure is 5.

All (90) close contacts within the same asymmetric unit are listed below, sorted by their clash magnitude.

Atom-1	Atom-2	Interatomic distance (Å)	Clash overlap (Å)
1:B:195:GLU:HG2	1:B:207:VAL:HG22	1.50	0.94
1:B:123:GLN:OE1	7:B:401:HOH:O	1.91	0.89
1:B:292:SER:N	7:B:402:HOH:O	2.08	0.86
1:A:304:ARG:HH21	4:A:401:GOL:H31	1.41	0.84
1:B:195:GLU:CG	1:B:207:VAL:HG22	2.12	0.78
1:B:195:GLU:HG2	1:B:207:VAL:CG2	2.19	0.72
1:A:246:GLN:HG2	7:A:581:HOH:O	1.90	0.70
1:A:206:VAL:HA	7:A:576:HOH:O	1.93	0.69
2:E:78:ASN:OD1	2:E:141:ARG:NH2	2.23	0.67
3:D:65:LYS:NZ	7:D:301:HOH:O	2.28	0.66
2:E:47:ASP:OD2	7:E:301:HOH:O	2.13	0.65
1:B:185:LYS:HE2	1:B:295:PRO:O	1.98	0.64
1:B:184:VAL:O	1:B:185:LYS:HD3	1.96	0.64
3:F:17:LYS:NZ	3:F:121:GLU:OE2	2.31	0.64
2:C:6:ASP:OD2	2:C:127:LYS:HE2	1.98	0.64
1:A:272:TYR:CE2	2:C:50:HIS:HE1	2.16	0.64
3:F:41:PHE:CD2	5:F:201:HEM:HBC1	2.33	0.63
1:A:36:ASP:O	1:A:267:LYS:NZ	2.31	0.63
1:A:304:ARG:HB3	4:A:401:GOL:C1	2.32	0.59
3:D:55:MET:O	3:D:61:LYS:HE2	2.03	0.59
5:D:201:HEM:HMC1	5:D:201:HEM:HBC2	1.85	0.57
3:F:30:ARG:NH1	7:F:301:HOH:O	2.38	0.56
1:B:195:GLU:CG	1:B:207:VAL:CG2	2.81	0.56
2:E:96:VAL:HG13	7:E:313:HOH:O	2.06	0.56
1:A:58:SER:HB2	1:A:66:LEU:HD11	1.89	0.55
1:A:304:ARG:HB3	4:A:401:GOL:H12	1.87	0.55
1:B:206:VAL:HG21	1:B:305:ARG:NH1	2.22	0.54
1:A:94:SER:O	3:D:61:LYS:NZ	2.38	0.54
2:C:40:LYS:HG2	2:C:48:LEU:HD13	1.90	0.53
1:A:99:ARG:HH11	1:A:99:ARG:CG	2.21	0.53
1:A:23:ASP:OD1	1:A:25:THR:HB	2.07	0.53
5:C:201:HEM:HBB2	5:C:201:HEM:HMB1	1.91	0.53
1:A:272:TYR:CE2	2:C:50:HIS:CE1	2.97	0.52
1:A:74:GLN:OE1	7:A:501:HOH:O	2.18	0.52
2:C:75:ASP:HB2	7:C:324:HOH:O	2.09	0.51
5:C:201:HEM:HBB2	5:C:201:HEM:CMB	2.40	0.51
3:D:94:ASP:OD2	3:D:144:LYS:HE3	2.10	0.51
1:B:26:SER:HB3	1:B:29:ILE:HD12	1.93	0.50
1:A:96:THR:OG1	1:A:98:ALA:HB3	2.11	0.50
1:A:129:ASN:OD1	1:A:132:ARG:NH2	2.44	0.50
5:E:201:HEM:HMC1	5:E:201:HEM:HBC2	1.94	0.50
1:A:270:ARG:O	3:D:120:LYS:HD2	2.13	0.49

Continued on next page...

Continued from previous page...

Atom-1	Atom-2	Interatomic distance (Å)	Clash overlap (Å)
1:A:91:MET:HE3	1:A:125:SER:HB3	1.93	0.49
1:B:32:ASP:OD1	1:B:34:SER:OG	2.28	0.48
2:E:76:MET:N	2:E:77:PRO:CD	2.77	0.47
2:E:117:PHE:O	3:F:30:ARG:NH2	2.48	0.47
1:A:36:ASP:HB2	1:A:267:LYS:HZ3	1.79	0.47
3:F:94:ASP:OD2	3:F:144:LYS:HE3	2.15	0.47
1:B:206:VAL:HG21	1:B:305:ARG:HH12	1.79	0.46
2:E:40:LYS:HG2	2:E:48:LEU:HD13	1.98	0.46
3:D:51:PRO:O	3:D:55:MET:HG2	2.16	0.46
5:E:201:HEM:HBB2	5:E:201:HEM:CMB	2.47	0.45
2:E:85:ASP:O	2:E:89:HIS:HB2	2.17	0.45
1:A:101:LEU:HB2	1:A:128:MET:HE1	1.98	0.45
5:D:201:HEM:CMC	5:D:201:HEM:HBC2	2.46	0.45
1:B:120:CYS:O	1:B:137:GLN:NE2	2.49	0.45
1:A:120:CYS:O	1:A:137:GLN:NE2	2.45	0.44
1:B:99:ARG:HB2	1:B:196:THR:OG1	2.17	0.44
1:A:221:LEU:C	1:A:221:LEU:HD23	2.37	0.44
3:D:32:LEU:HD22	3:D:39:GLN:HA	1.98	0.44
3:D:47:ASP:OD1	3:D:49:SER:OG	2.28	0.44
3:F:41:PHE:CD2	5:F:201:HEM:CBC	3.00	0.44
1:A:180:ILE:HD11	1:A:194:TYR:CD2	2.53	0.44
1:A:304:ARG:HD2	1:A:307:TYR:HB3	1.99	0.43
2:C:76:MET:N	2:C:77:PRO:CD	2.82	0.43
2:C:85:ASP:O	2:C:89:HIS:HB2	2.18	0.43
1:A:92:PRO:HB3	1:A:100:VAL:O	2.18	0.43
1:B:221:LEU:C	1:B:221:LEU:HD23	2.39	0.43
5:F:201:HEM:HBB2	5:F:201:HEM:HMB2	2.01	0.43
5:F:201:HEM:HMC2	5:F:201:HEM:HAC	1.80	0.43
1:A:128:MET:HE3	1:A:128:MET:HB3	1.90	0.43
1:A:92:PRO:HG3	1:A:128:MET:HE2	2.00	0.42
1:B:88:THR:HA	1:B:118:ALA:O	2.19	0.42
3:D:91:LEU:O	3:D:95:LYS:HB3	2.19	0.42
1:A:26:SER:HB3	1:A:29:ILE:HD12	2.02	0.42
5:E:201:HEM:CMC	5:E:201:HEM:HBC2	2.49	0.42
1:A:91:MET:HE3	1:A:125:SER:CB	2.49	0.42
5:E:201:HEM:HBB2	5:E:201:HEM:HMB1	2.02	0.42
3:F:26:GLU:OE2	3:F:117:HIS:NE2	2.45	0.42
3:D:101:GLU:OE2	3:D:104:ARG:NH2	2.52	0.42
3:D:26:GLU:HG2	7:D:316:HOH:O	2.19	0.42
2:E:17:VAL:CG1	2:E:21:ALA:HA	2.49	0.42
2:E:16:LYS:HG3	2:E:16:LYS:O	2.19	0.41

Continued on next page...

Continued from previous page...

Atom-1	Atom-2	Interatomic distance (Å)	Clash overlap (Å)
1:B:143:SER:HB2	1:B:144:PRO:HD2	2.02	0.41
3:F:21:ASP:OD1	3:F:65:LYS:HE2	2.21	0.41
1:A:179:VAL:HG12	1:A:302:GLY:HA3	2.02	0.41
1:B:76:PRO:HD2	1:B:141:TRP:CE3	2.55	0.41
2:C:32:MET:SD	2:C:101:LEU:HB2	2.61	0.41
1:A:99:ARG:NH1	1:A:99:ARG:CG	2.80	0.40
5:F:201:HEM:HHD	5:F:201:HEM:HBC2	2.04	0.40

All (1) symmetry-related close contacts are listed below. The label for Atom-2 includes the symmetry operator and encoded unit-cell translations to be applied.

Atom-1	Atom-2	Interatomic distance (Å)	Clash overlap (Å)
1:A:292:SER:OG	1:B:38:GLU:OE2 1_554	2.19	0.01

5.3 Torsion angles ⓘ

5.3.1 Protein backbone ⓘ

In the following table, the Percentiles column shows the percent Ramachandran outliers of the chain as a percentile score with respect to all X-ray entries followed by that with respect to entries of similar resolution.

The Analysed column shows the number of residues for which the backbone conformation was analysed, and the total number of residues.

Mol	Chain	Analysed	Favoured	Allowed	Outliers	Percentiles	
1	A	293/322 (91%)	280 (96%)	12 (4%)	1 (0%)	41	50
1	B	294/322 (91%)	277 (94%)	16 (5%)	1 (0%)	41	50
2	C	139/141 (99%)	138 (99%)	1 (1%)	0	100	100
2	E	139/141 (99%)	138 (99%)	1 (1%)	0	100	100
3	D	144/146 (99%)	143 (99%)	1 (1%)	0	100	100
3	F	139/146 (95%)	135 (97%)	4 (3%)	0	100	100
All	All	1148/1218 (94%)	1111 (97%)	35 (3%)	2 (0%)	47	58

All (2) Ramachandran outliers are listed below:

Mol	Chain	Res	Type
1	A	266	ALA

Continued on next page...

Continued from previous page...

Mol	Chain	Res	Type
1	B	266	ALA

5.3.2 Protein sidechains ⓘ

In the following table, the Percentiles column shows the percent sidechain outliers of the chain as a percentile score with respect to all X-ray entries followed by that with respect to entries of similar resolution.

The Analysed column shows the number of residues for which the sidechain conformation was analysed, and the total number of residues.

Mol	Chain	Analysed	Rotameric	Outliers	Percentiles	
1	A	243/261 (93%)	241 (99%)	2 (1%)	81	91
1	B	244/261 (94%)	240 (98%)	4 (2%)	62	78
2	C	113/113 (100%)	113 (100%)	0	100	100
2	E	113/113 (100%)	113 (100%)	0	100	100
3	D	118/118 (100%)	115 (98%)	3 (2%)	47	65
3	F	113/118 (96%)	112 (99%)	1 (1%)	78	89
All	All	944/984 (96%)	934 (99%)	10 (1%)	73	86

All (10) residues with a non-rotameric sidechain are listed below:

Mol	Chain	Res	Type
1	A	99	ARG
1	A	187	ASP
1	B	34	SER
1	B	195	GLU
1	B	261	SER
1	B	276	LEU
3	D	14	LEU
3	D	44	SER
3	D	114	LEU
3	F	6	GLU

Some sidechains can be flipped to improve hydrogen bonding and reduce clashes. All (3) such sidechains are listed below:

Mol	Chain	Res	Type
1	A	45	GLN
2	C	50	HIS

Continued on next page...

Continued from previous page...

Mol	Chain	Res	Type
2	E	122	HIS

5.3.3 RNA ⓘ

There are no RNA molecules in this entry.

5.4 Non-standard residues in protein, DNA, RNA chains ⓘ

There are no non-standard protein/DNA/RNA residues in this entry.

5.5 Carbohydrates ⓘ

There are no carbohydrates in this entry.

5.6 Ligand geometry ⓘ

10 ligands are modelled in this entry.

In the following table, the Counts columns list the number of bonds (or angles) for which Mogul statistics could be retrieved, the number of bonds (or angles) that are observed in the model and the number of bonds (or angles) that are defined in the Chemical Component Dictionary. The Link column lists molecule types, if any, to which the group is linked. The Z score for a bond length (or angle) is the number of standard deviations the observed value is removed from the expected value. A bond length (or angle) with $|Z| > 2$ is considered an outlier worth inspection. RMSZ is the root-mean-square of all Z scores of the bond lengths (or angles).

Mol	Type	Chain	Res	Link	Bond lengths			Bond angles		
					Counts	RMSZ	$\# Z > 2$	Counts	RMSZ	$\# Z > 2$
4	GOL	A	401	-	5,5,5	0.69	0	5,5,5	0.96	0
5	HEM	D	201	3,6	27,50,50	0.99	3 (11%)	17,82,82	1.76	3 (17%)
6	OXY	F	202	5	1,1,1	0.20	0	-		
5	HEM	F	201	3,6	27,50,50	1.25	4 (14%)	17,82,82	1.87	4 (23%)
6	OXY	D	202	5	1,1,1	0.10	0	-		
4	GOL	D	203	-	5,5,5	0.82	0	5,5,5	0.80	0
5	HEM	E	201	2,6	27,50,50	1.15	3 (11%)	17,82,82	1.66	2 (11%)
6	OXY	E	202	5	1,1,1	0.08	0	-		
6	OXY	C	202	5	1,1,1	0.19	0	-		
5	HEM	C	201	2,6	27,50,50	1.16	3 (11%)	17,82,82	1.52	4 (23%)

In the following table, the Chirals column lists the number of chiral outliers, the number of chiral

centers analysed, the number of these observed in the model and the number defined in the Chemical Component Dictionary. Similar counts are reported in the Torsion and Rings columns. '-' means no outliers of that kind were identified.

Mol	Type	Chain	Res	Link	Chirals	Torsions	Rings
4	GOL	A	401	-	-	4/4/4/4	-
5	HEM	D	201	3,6	-	2/6/54/54	-
5	HEM	F	201	3,6	-	0/6/54/54	-
4	GOL	D	203	-	-	2/4/4/4	-
5	HEM	E	201	2,6	-	0/6/54/54	-
5	HEM	C	201	2,6	-	0/6/54/54	-

All (13) bond length outliers are listed below:

Mol	Chain	Res	Type	Atoms	Z	Observed(Å)	Ideal(Å)
5	C	201	HEM	C3B-C2B	-3.39	1.35	1.40
5	F	201	HEM	C3C-C2C	-3.36	1.35	1.40
5	F	201	HEM	C3B-C2B	-2.76	1.36	1.40
5	E	201	HEM	C3B-C2B	-2.76	1.36	1.40
5	C	201	HEM	C1A-CHA	-2.67	1.33	1.41
5	D	201	HEM	C3B-C2B	-2.64	1.36	1.40
5	E	201	HEM	C4D-C3D	2.37	1.47	1.42
5	F	201	HEM	C4D-C3D	2.34	1.47	1.42
5	E	201	HEM	C1A-CHA	-2.34	1.34	1.41
5	D	201	HEM	C4B-NB	-2.28	1.31	1.36
5	D	201	HEM	C4D-C3D	2.15	1.47	1.42
5	F	201	HEM	C1A-NA	2.13	1.40	1.36
5	C	201	HEM	C4B-NB	-2.05	1.31	1.36

All (13) bond angle outliers are listed below:

Mol	Chain	Res	Type	Atoms	Z	Observed(°)	Ideal(°)
5	F	201	HEM	C4C-C3C-C2C	5.10	110.46	106.90
5	D	201	HEM	CBD-CAD-C3D	4.34	120.47	112.48
5	E	201	HEM	CAD-CBD-CGD	-3.83	106.24	112.67
5	C	201	HEM	CAA-CBA-CGA	-3.14	107.41	112.67
5	D	201	HEM	CAD-CBD-CGD	-3.07	107.52	112.67
5	F	201	HEM	C3C-C4C-NC	-3.06	105.17	110.94
5	E	201	HEM	C1D-C2D-C3D	-2.89	104.99	107.00
5	C	201	HEM	C4A-C3A-C2A	2.82	108.96	107.00
5	F	201	HEM	CMA-C3A-C4A	-2.59	124.48	128.46
5	F	201	HEM	C4A-C3A-C2A	2.54	108.77	107.00
5	D	201	HEM	CAD-C3D-C2D	-2.45	120.20	127.25
5	C	201	HEM	CMA-C3A-C4A	-2.45	124.70	128.46

Continued on next page...

Continued from previous page...

Mol	Chain	Res	Type	Atoms	Z	Observed(°)	Ideal(°)
5	C	201	HEM	C3B-C4B-NB	-2.04	106.57	109.21

There are no chirality outliers.

All (8) torsion outliers are listed below:

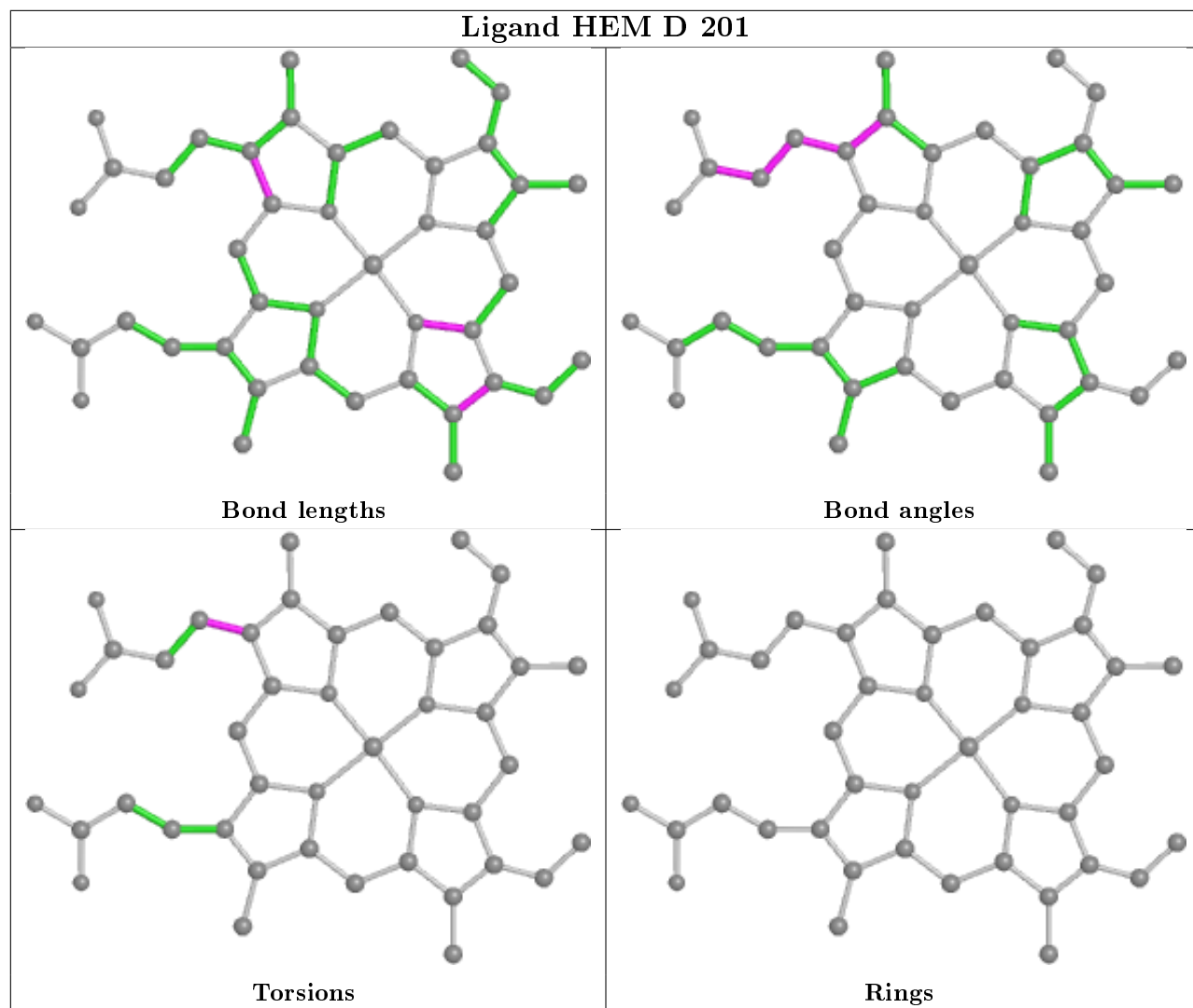
Mol	Chain	Res	Type	Atoms
5	D	201	HEM	C2D-C3D-CAD-CBD
5	D	201	HEM	C4D-C3D-CAD-CBD
4	D	203	GOL	O2-C2-C3-O3
4	A	401	GOL	O1-C1-C2-C3
4	A	401	GOL	C1-C2-C3-O3
4	D	203	GOL	C1-C2-C3-O3
4	A	401	GOL	O1-C1-C2-O2
4	A	401	GOL	O2-C2-C3-O3

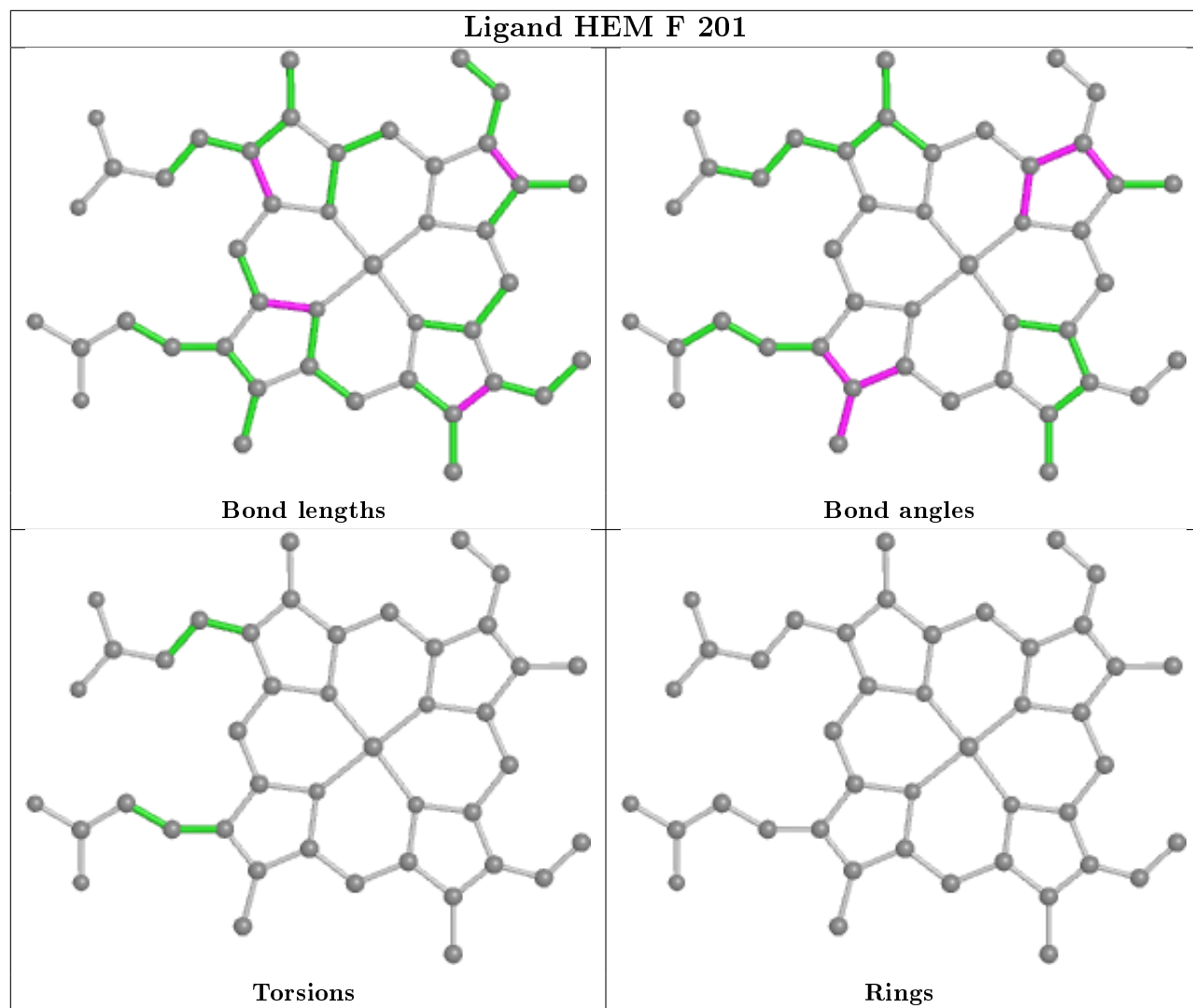
There are no ring outliers.

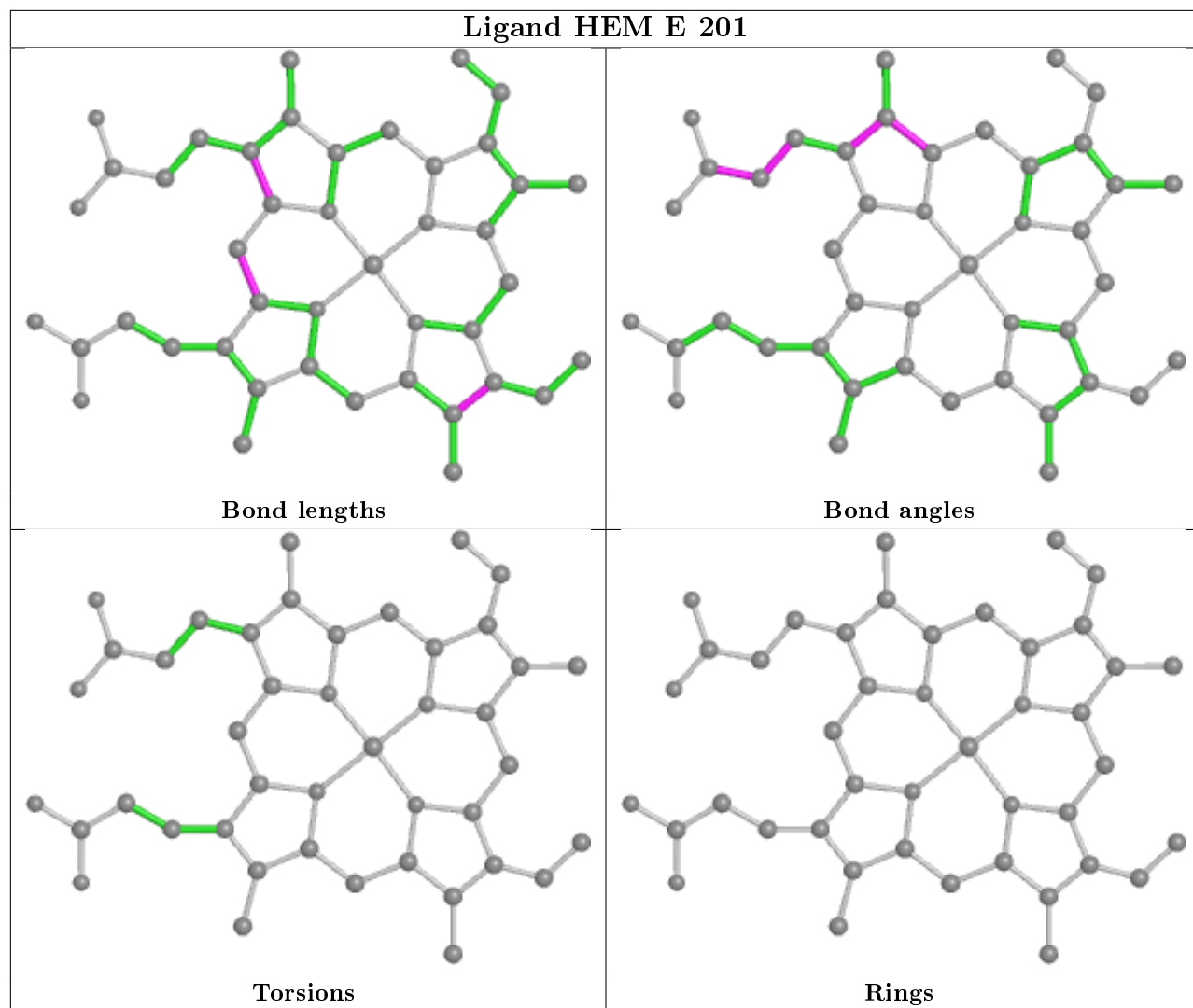
5 monomers are involved in 16 short contacts:

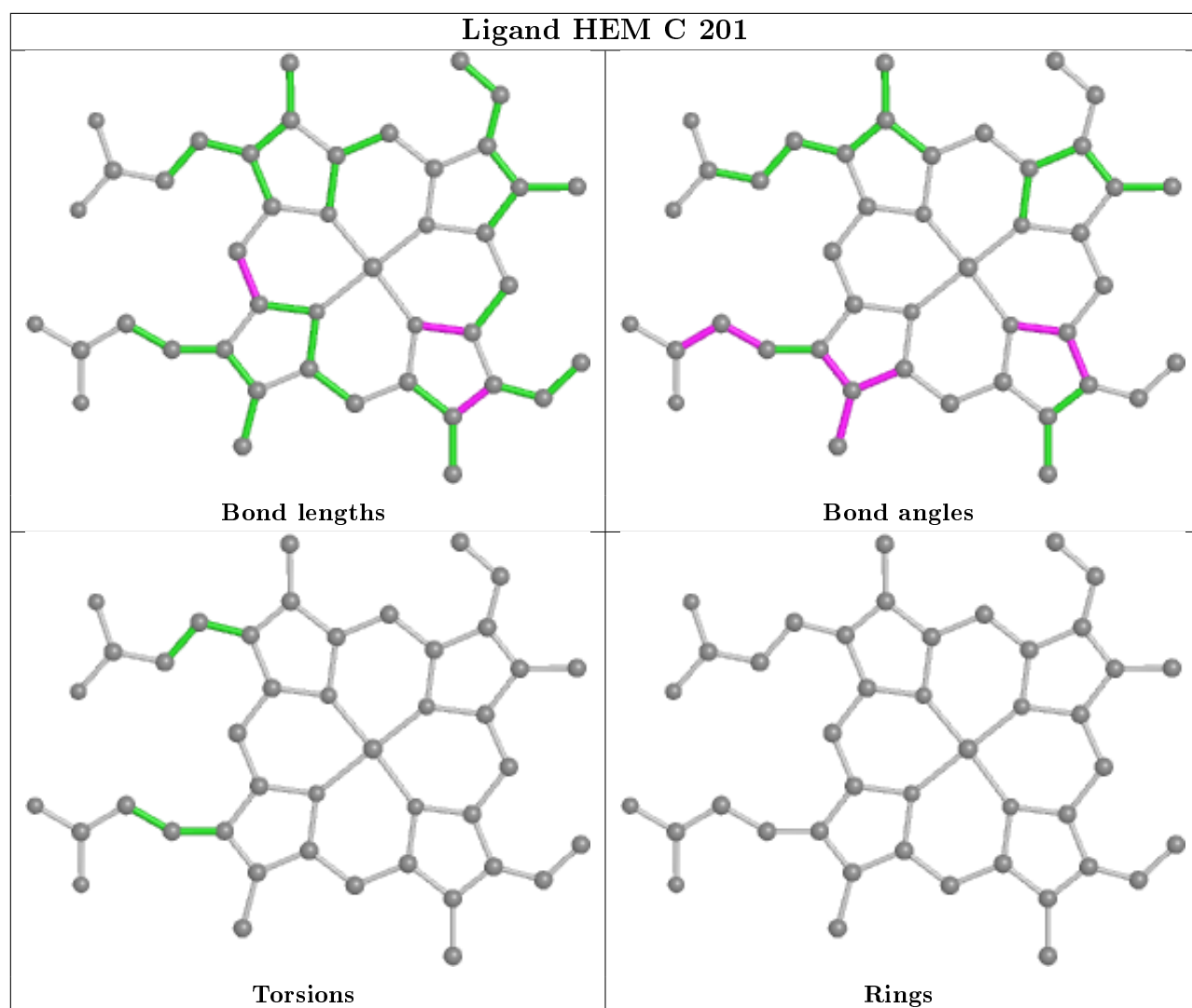
Mol	Chain	Res	Type	Clashes	Symm-Clashes
4	A	401	GOL	3	0
5	D	201	HEM	2	0
5	F	201	HEM	5	0
5	E	201	HEM	4	0
5	C	201	HEM	2	0

The following is a two-dimensional graphical depiction of Mogul quality analysis of bond lengths, bond angles, torsion angles, and ring geometry for all instances of the Ligand of Interest. In addition, ligands with molecular weight > 250 and outliers as shown on the validation Tables will also be included. For torsion angles, if less than 5% of the Mogul distribution of torsion angles is within 10 degrees of the torsion angle in question, then that torsion angle is considered an outlier. Any bond that is central to one or more torsion angles identified as an outlier by Mogul will be highlighted in the graph. For rings, the root-mean-square deviation (RMSD) between the ring in question and similar rings identified by Mogul is calculated over all ring torsion angles. If the average RMSD is greater than 60 degrees and the minimal RMSD between the ring in question and any Mogul-identified rings is also greater than 60 degrees, then that ring is considered an outlier. The outliers are highlighted in purple. The color gray indicates Mogul did not find sufficient equivalents in the CSD to analyse the geometry.









5.7 Other polymers [i](#)

There are no such residues in this entry.

5.8 Polymer linkage issues [i](#)

There are no chain breaks in this entry.

6 Fit of model and data ⓘ

6.1 Protein, DNA and RNA chains ⓘ

In the following table, the column labelled ‘#RSRZ> 2’ contains the number (and percentage) of RSRZ outliers, followed by percent RSRZ outliers for the chain as percentile scores relative to all X-ray entries and entries of similar resolution. The OWAB column contains the minimum, median, 95th percentile and maximum values of the occupancy-weighted average B-factor per residue. The column labelled ‘Q< 0.9’ lists the number of (and percentage) of residues with an average occupancy less than 0.9.

Mol	Chain	Analysed	<RSRZ>	#RSRZ>2	OWAB(Å ²)	Q<0.9
1	A	297/322 (92%)	-0.12	4 (1%) 77 81	18, 29, 52, 73	0
1	B	298/322 (92%)	0.21	15 (5%) 28 35	19, 39, 63, 80	0
2	C	141/141 (100%)	-0.26	0 100 100	17, 26, 44, 61	0
2	E	141/141 (100%)	-0.34	0 100 100	18, 27, 41, 48	0
3	D	146/146 (100%)	-0.20	0 100 100	16, 30, 47, 56	0
3	F	141/146 (96%)	-0.20	0 100 100	18, 29, 50, 64	0
All	All	1164/1218 (95%)	-0.10	19 (1%) 72 77	16, 31, 54, 80	0

All (19) RSRZ outliers are listed below:

Mol	Chain	Res	Type	RSRZ
1	B	63	GLY	3.4
1	B	16	ILE	3.3
1	B	197	ARG	3.2
1	B	97	SER	3.0
1	B	15	PRO	2.9
1	A	93	SER	2.7
1	A	94	SER	2.5
1	B	187	ASP	2.4
1	B	166	ASP	2.4
1	B	98	ALA	2.4
1	B	29	ILE	2.3
1	B	86	TYR	2.3
1	B	93	SER	2.3
1	B	64	LEU	2.2
1	B	94	SER	2.2
1	B	96	THR	2.2
1	A	98	ALA	2.2
1	A	100	VAL	2.1
1	B	90	ILE	2.0

6.2 Non-standard residues in protein, DNA, RNA chains ⓘ

There are no non-standard protein/DNA/RNA residues in this entry.

6.3 Carbohydrates ⓘ

There are no carbohydrates in this entry.

6.4 Ligands ⓘ

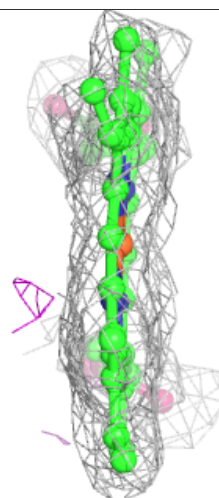
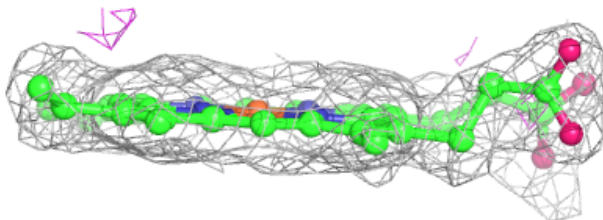
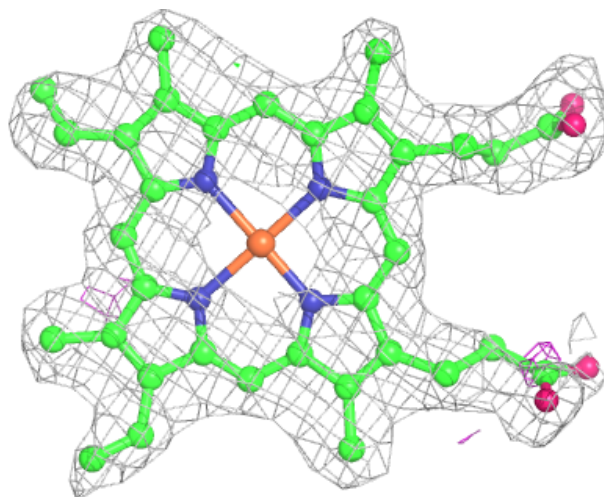
In the following table, the Atoms column lists the number of modelled atoms in the group and the number defined in the chemical component dictionary. The B-factors column lists the minimum, median, 95th percentile and maximum values of B factors of atoms in the group. The column labelled 'Q< 0.9' lists the number of atoms with occupancy less than 0.9.

Mol	Type	Chain	Res	Atoms	RSCC	RSR	B-factors(\AA^2)	Q<0.9
4	GOL	A	401	6/6	0.87	0.18	26,27,29,31	0
4	GOL	D	203	6/6	0.88	0.25	32,33,34,35	0
6	OXY	E	202	2/2	0.94	0.25	64,64,64,67	0
6	OXY	C	202	2/2	0.94	0.21	42,42,42,43	0
5	HEM	D	201	43/43	0.95	0.13	20,27,46,59	0
5	HEM	F	201	43/43	0.96	0.12	20,26,50,61	0
6	OXY	D	202	2/2	0.97	0.13	50,50,50,54	0
5	HEM	E	201	43/43	0.97	0.12	20,24,45,48	0
5	HEM	C	201	43/43	0.97	0.12	18,24,41,51	0
6	OXY	F	202	2/2	0.99	0.08	26,26,26,39	0

The following is a graphical depiction of the model fit to experimental electron density of all instances of the Ligand of Interest. In addition, ligands with molecular weight > 250 and outliers as shown on the geometry validation Tables will also be included. Each fit is shown from different orientation to approximate a three-dimensional view.

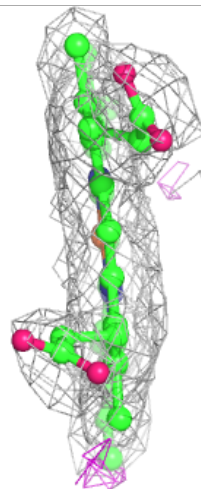
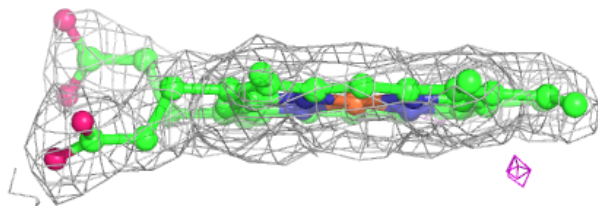
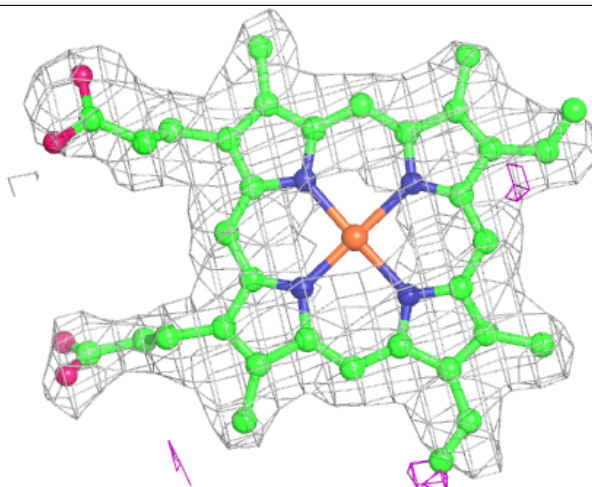
Electron density around HEM D 201:

$2mF_o-DF_c$ (at 0.7 rmsd) in gray
 mF_o-DF_c (at 3 rmsd) in purple (negative)
and green (positive)



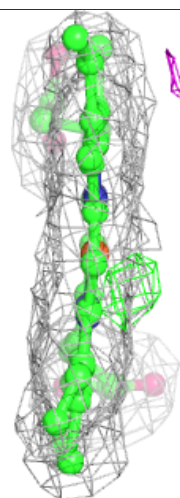
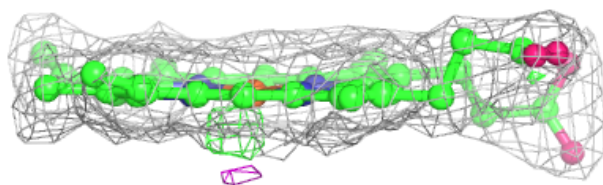
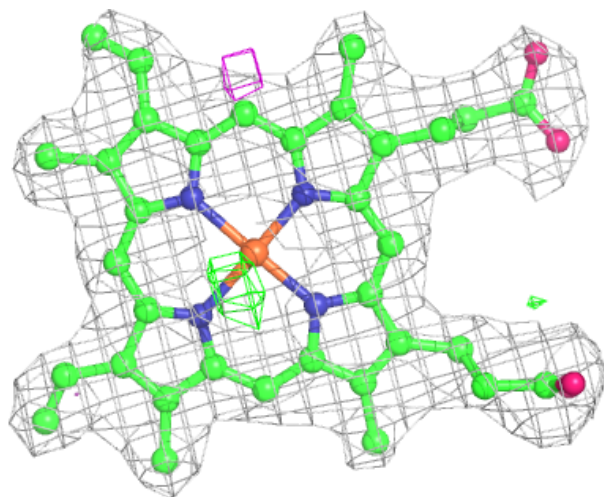
Electron density around HEM F 201:

$2mF_o-DF_c$ (at 0.7 rmsd) in gray
 mF_o-DF_c (at 3 rmsd) in purple (negative)
and green (positive)



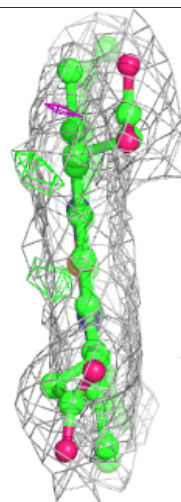
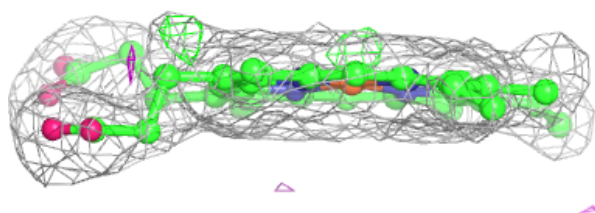
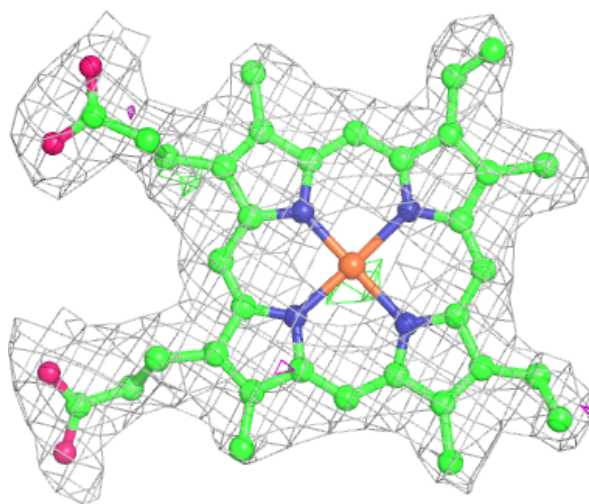
Electron density around HEM E 201:

$2mF_o-DF_c$ (at 0.7 rmsd) in gray
 mF_o-DF_c (at 3 rmsd) in purple (negative)
and green (positive)



Electron density around HEM C 201:

$2mF_o-DF_c$ (at 0.7 rmsd) in gray
 mF_o-DF_c (at 3 rmsd) in purple (negative)
and green (positive)



6.5 Other polymers ⓘ

There are no such residues in this entry.