



Full wwPDB X-ray Structure Validation Report ⓘ

Sep 13, 2020 – 10:31 AM BST

PDB ID : 2EHU
Title : Crystal analysis of 1-pyrroline-5-carboxylate dehydrogenase from thermus with bound NAD and Inhibitor L-serine
Authors : Inagaki, E.; Sakamoto, K.; Yokoyama, S.; RIKEN Structural Genomics/Proteomics Initiative (RSGI)
Deposited on : 2007-03-09
Resolution : 1.80 Å(reported)

This is a Full wwPDB X-ray Structure Validation Report for a publicly released PDB entry.

We welcome your comments at validation@mail.wwpdb.org

A user guide is available at

<https://www.wwpdb.org/validation/2017/XrayValidationReportHelp>

with specific help available everywhere you see the ⓘ symbol.

The following versions of software and data (see [references ⓘ](#)) were used in the production of this report:

MolProbity : 4.02b-467
Mogul : 1.8.5 (274361), CSD as541be (2020)
Xtriage (Phenix) : 1.13
EDS : 2.14.4.dev1
buster-report : 1.1.7 (2018)
Percentile statistics : 20191225.v01 (using entries in the PDB archive December 25th 2019)
Refmac : 5.8.0158
CCP4 : 7.0.044 (Gargrove)
Ideal geometry (proteins) : Engh & Huber (2001)
Ideal geometry (DNA, RNA) : Parkinson et al. (1996)
Validation Pipeline (wwPDB-VP) : 2.14.4.dev1

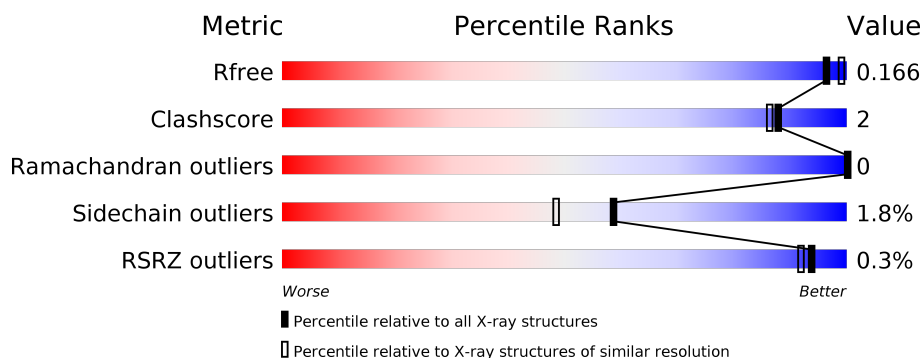
1 Overall quality at a glance

The following experimental techniques were used to determine the structure:

X-RAY DIFFRACTION

The reported resolution of this entry is 1.80 Å.

Percentile scores (ranging between 0-100) for global validation metrics of the entry are shown in the following graphic. The table shows the number of entries on which the scores are based.



Metric	Whole archive (#Entries)	Similar resolution (#Entries, resolution range(Å))
R_{free}	130704	5950 (1.80-1.80)
Clashscore	141614	6793 (1.80-1.80)
Ramachandran outliers	138981	6697 (1.80-1.80)
Sidechain outliers	138945	6696 (1.80-1.80)
RSRZ outliers	127900	5850 (1.80-1.80)

The table below summarises the geometric issues observed across the polymeric chains and their fit to the electron density. The red, orange, yellow and green segments on the lower bar indicate the fraction of residues that contain outliers for ≥ 3 , 2, 1 and 0 types of geometric quality criteria respectively. A grey segment represents the fraction of residues that are not modelled. The numeric value for each fraction is indicated below the corresponding segment, with a dot representing fractions $\leq 5\%$. The upper red bar (where present) indicates the fraction of residues that have poor fit to the electron density. The numeric value is given above the bar.

Mol	Chain	Length	Quality of chain
1	A	516	<div> <div style="width: 100%; height: 10px; background: linear-gradient(to right, red, orange, yellow, green, blue);"></div> <div style="display: flex; justify-content: space-between; width: 100%;"> % 94% 5% • </div> </div>
1	B	516	<div> <div style="width: 100%; height: 10px; background: linear-gradient(to right, red, orange, yellow, green, blue);"></div> <div style="display: flex; justify-content: space-between; width: 100%;"> % 95% • • </div> </div>

The following table lists non-polymeric compounds, carbohydrate monomers and non-standard residues in protein, DNA, RNA chains that are outliers for geometric or electron-density-fit criteria:

Mol	Type	Chain	Res	Chirality	Geometry	Clashes	Electron density
6	MPD	A	1531	X	-	-	-
6	MPD	A	1533	X	-	-	-
6	MPD	A	1535	X	-	-	-
6	MPD	B	2533	X	-	-	-
6	MPD	B	2536	X	-	-	-
6	MPD	B	2537	X	-	-	-
6	MPD	B	2538	X	-	-	-

2 Entry composition [i](#)

There are 7 unique types of molecules in this entry. The entry contains 9304 atoms, of which 0 are hydrogens and 0 are deuteriums.

In the tables below, the ZeroOcc column contains the number of atoms modelled with zero occupancy, the AltConf column contains the number of residues with at least one atom in alternate conformation and the Trace column contains the number of residues modelled with at most 2 atoms.

- Molecule 1 is a protein called 1-pyrroline-5-carboxylate dehydrogenase.

Mol	Chain	Residues	Atoms					ZeroOcc	AltConf	Trace
1	A	516	Total	C	N	O	S	0	2	0
			4043	2596	698	742	7			
1	B	516	Total	C	N	O	S	0	4	0
			4048	2598	698	745	7			

- Molecule 2 is SODIUM ION (three-letter code: NA) (formula: Na).

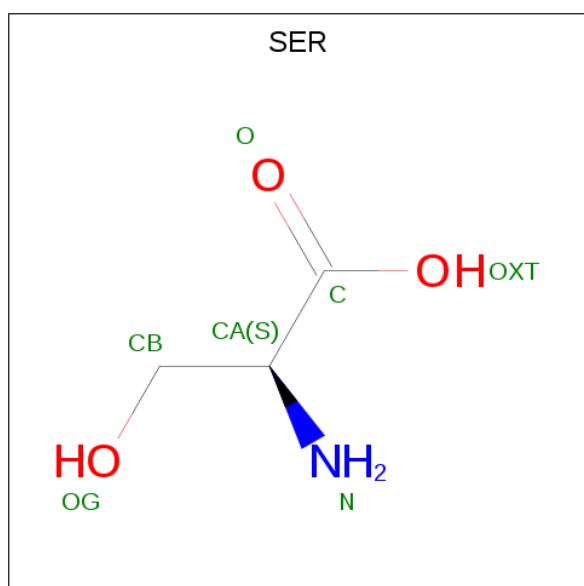
Mol	Chain	Residues	Atoms		ZeroOcc	AltConf
2	B	1	Total	Na	0	1
			2	2		
2	A	1	Total	Na	0	0
			1	1		

- Molecule 3 is ACETATE ION (three-letter code: ACT) (formula: C₂H₃O₂).



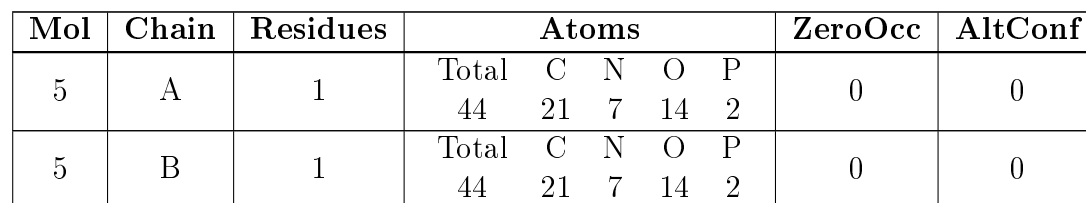
Mol	Chain	Residues	Atoms			ZeroOcc	AltConf
3	A	1	Total	C	O	0	0
			4	2	2		
3	A	1	Total	C	O	0	0
			4	2	2		
3	B	1	Total	C	O	0	0
			4	2	2		
3	B	1	Total	C	O	0	0
			4	2	2		

- Molecule 4 is SERINE (three-letter code: SER) (formula: $C_3H_7NO_3$).



Mol	Chain	Residues	Atoms				ZeroOcc	AltConf
4	A	1	Total	C	N	O	0	0
			7	3	1	3		
4	B	1	Total	C	N	O	0	0
			7	3	1	3		

- Molecule 5 is NICOTINAMIDE-ADENINE-DINUCLEOTIDE (three-letter code: NAD) (formula: $C_{21}H_{27}N_7O_{14}P_2$).



-
- Chemical structure of 2-methylpentane-2,4-diol (MPD) is shown. The structure is a five-carbon chain with hydroxyl groups on carbons 2 and 4, and a methyl group on carbon 2. The atoms are labeled as follows:
- Carbons: C1 (methyl group), C2 (central carbon), C3, C4(S) (chiral center), and C5 (terminal methyl group).
 - Oxygen atoms: O2 (hydroxyl group on C2) and O4 (hydroxyl group on C4).
 - Hydroxyl groups: OH (red text) are attached to C2 and C4.
 - Other labels: CM (methyl group) is attached to C2, and C4(S) indicates the stereochemistry at the chiral center.

Mol	Chain	Residues	Atoms			ZeroOcc	AltConf
6	A	1	Total	C	O	0	0
			8	6	2		

Continued on next page...

Continued from previous page...

Mol	Chain	Residues	Atoms			ZeroOcc	AltConf
6	A	1	Total	C	O	0	0
			8	6	2		
6	A	1	Total	C	O	0	0
			8	6	2		
6	A	1	Total	C	O	0	0
			8	6	2		
6	A	1	Total	C	O	0	0
			8	6	2		
6	A	1	Total	C	O	0	0
			8	6	2		
6	B	1	Total	C	O	0	0
			8	6	2		
6	B	1	Total	C	O	0	0
			8	6	2		
6	B	1	Total	C	O	0	0
			8	6	2		
6	B	1	Total	C	O	0	0
			8	6	2		
6	B	1	Total	C	O	0	0
			8	6	2		
6	B	1	Total	C	O	0	0
			8	6	2		

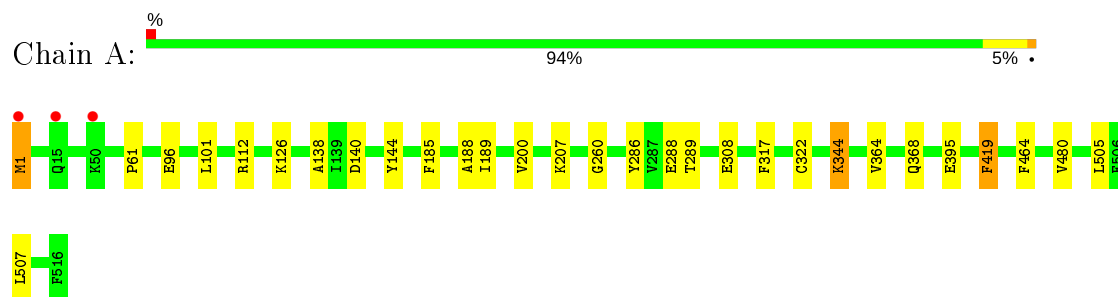
- Molecule 7 is water.

Mol	Chain	Residues	Atoms		ZeroOcc	AltConf
7	A	490	Total	O	0	10
			490	490		
7	B	498	Total	O	0	6
			498	498		

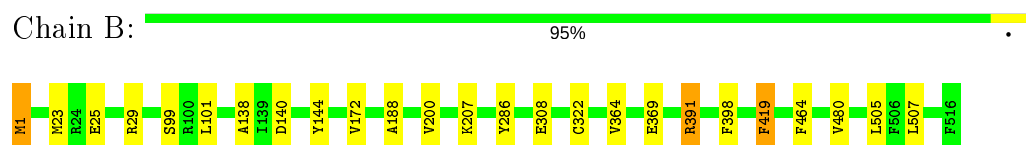
3 Residue-property plots [i](#)

These plots are drawn for all protein, RNA, DNA and oligosaccharide chains in the entry. The first graphic for a chain summarises the proportions of the various outlier classes displayed in the second graphic. The second graphic shows the sequence view annotated by issues in geometry and electron density. Residues are color-coded according to the number of geometric quality criteria for which they contain at least one outlier: green = 0, yellow = 1, orange = 2 and red = 3 or more. A red dot above a residue indicates a poor fit to the electron density ($RSRZ > 2$). Stretches of 2 or more consecutive residues without any outlier are shown as a green connector. Residues present in the sample, but not in the model, are shown in grey.

- Molecule 1: 1-pyrroline-5-carboxylate dehydrogenase



- Molecule 1: 1-pyrroline-5-carboxylate dehydrogenase



4 Data and refinement statistics

Property	Value	Source
Space group	H 3	Depositor
Cell constants a, b, c, α , β , γ	102.56Å 102.56Å 278.58Å 90.00° 90.00° 120.00°	Depositor
Resolution (Å)	30.00 – 1.80 29.64 – 1.80	Depositor EDS
% Data completeness (in resolution range)	99.8 (30.00-1.80) 99.8 (29.64-1.80)	Depositor EDS
R_{merge}	0.07	Depositor
R_{sym}	0.06	Depositor
$\langle I/\sigma(I) \rangle$ ¹	5.42 (at 1.80Å)	Xtriage
Refinement program	REFMAC 5.2.0005	Depositor
R, R_{free}	0.139 , 0.167 0.138 , 0.166	Depositor DCC
R_{free} test set	5024 reflections (4.99%)	wwPDB-VP
Wilson B-factor (Å ²)	13.0	Xtriage
Anisotropy	0.025	Xtriage
Bulk solvent k_{sol} (e/Å ³), B_{sol} (Å ²)	0.35 , 51.9	EDS
L-test for twinning ²	$\langle L \rangle = 0.49$, $\langle L^2 \rangle = 0.32$	Xtriage
Estimated twinning fraction	0.031 for -h-k,k,-l	Xtriage
F_o, F_c correlation	0.97	EDS
Total number of atoms	9304	wwPDB-VP
Average B, all atoms (Å ²)	13.0	wwPDB-VP

Xtriage's analysis on translational NCS is as follows: *The largest off-origin peak in the Patterson function is 3.82% of the height of the origin peak. No significant pseudotranslation is detected.*

¹Intensities estimated from amplitudes.

²Theoretical values of $\langle |L| \rangle$, $\langle L^2 \rangle$ for acentric reflections are 0.5, 0.333 respectively for untwinned datasets, and 0.375, 0.2 for perfectly twinned datasets.

5 Model quality

5.1 Standard geometry

Bond lengths and bond angles in the following residue types are not validated in this section: NA, MPD, NAD, ACT

The Z score for a bond length (or angle) is the number of standard deviations the observed value is removed from the expected value. A bond length (or angle) with $|Z| > 5$ is considered an outlier worth inspection. RMSZ is the root-mean-square of all Z scores of the bond lengths (or angles).

Mol	Chain	Bond lengths		Bond angles	
		RMSZ	# Z >5	RMSZ	# Z >5
1	A	0.57	0/4151	0.61	0/5629
1	B	0.57	0/4166	0.60	0/5649
All	All	0.57	0/8317	0.60	0/11278

There are no bond length outliers.

There are no bond angle outliers.

There are no chirality outliers.

There are no planarity outliers.

5.2 Too-close contacts

In the following table, the Non-H and H(model) columns list the number of non-hydrogen atoms and hydrogen atoms in the chain respectively. The H(added) column lists the number of hydrogen atoms added and optimized by MolProbity. The Clashes column lists the number of clashes within the asymmetric unit, whereas Symm-Clashes lists symmetry related clashes.

Mol	Chain	Non-H	H(model)	H(added)	Clashes	Symm-Clashes
1	A	4043	0	4025	19	0
1	B	4048	0	4028	13	0
2	A	1	0	0	0	0
2	B	2	0	0	0	0
3	A	8	0	6	1	0
3	B	8	0	6	0	0
4	A	7	0	4	0	0
4	B	7	0	4	1	0
5	A	44	0	26	3	0
5	B	44	0	26	2	0
6	A	48	0	84	1	0

Continued on next page...

Continued from previous page...

Mol	Chain	Non-H	H(model)	H(added)	Clashes	Symm-Clashes
6	B	56	0	98	1	0
7	A	490	0	0	3	0
7	B	498	0	0	2	0
All	All	9304	0	8307	33	0

The all-atom clashscore is defined as the number of clashes found per 1000 atoms (including hydrogen atoms). The all-atom clashscore for this structure is 2.

All (33) close contacts within the same asymmetric unit are listed below, sorted by their clash magnitude.

Atom-1	Atom-2	Interatomic distance (Å)	Clash overlap (Å)
1:A:61:PRO:HD2	1:A:395:GLU:HG2	1.43	0.99
1:B:369:GLU:OE1	1:B:391:ARG:NE	2.28	0.67
1:B:1:MET:HE1	1:B:99:SER:HB2	1.77	0.66
1:A:288:GLU:OE1	7:A:3002:HOH:O	2.17	0.60
1:A:344:LYS:N	1:A:344:LYS:HD2	2.19	0.57
1:A:286:TYR:CZ	1:A:505:LEU:HB3	2.47	0.50
3:A:1520:ACT:H2	1:B:172:VAL:HG11	1.94	0.50
1:A:144:TYR:CE1	6:A:1532:MPD:HM2	2.46	0.49
1:B:391:ARG:HD3	1:B:398:PHE:O	2.13	0.49
1:A:322:CYS:SG	5:A:1518:NAD:C4N	3.01	0.49
1:B:144:TYR:CE1	6:B:2532:MPD:HM2	2.48	0.48
1:A:1:MET:HB2	1:A:1:MET:HE2	1.60	0.48
4:B:2517:SER:N	7:B:2896:HOH:O	2.48	0.46
1:A:1:MET:HE1	1:A:96:GLU:O	2.15	0.46
1:A:112:ARG:NH2	7:A:2844:HOH:O	2.40	0.45
1:B:286:TYR:CZ	1:B:505:LEU:HB3	2.52	0.45
1:A:322:CYS:SG	5:A:1518:NAD:C3N	3.05	0.45
1:B:322:CYS:SG	5:B:2518:NAD:C4N	3.05	0.44
1:B:308:GLU:HB3	7:B:3016:HOH:O	2.17	0.44
1:A:308:GLU:HB3	7:A:2818:HOH:O	2.19	0.43
1:A:185:PHE:HB2	1:A:189:ILE:HD12	2.01	0.43
1:A:419:PHE:CE2	5:A:1518:NAD:H2D	2.54	0.43
1:B:140:ASP:HB3	1:B:480:VAL:HB	2.00	0.42
1:A:140:ASP:HB3	1:A:480:VAL:HB	2.01	0.42
1:B:419:PHE:CE2	5:B:2518:NAD:H2D	2.55	0.42
1:A:200:VAL:HB	1:A:507:LEU:HD21	2.01	0.42
1:B:138:ALA:HB2	1:B:188:ALA:HA	2.02	0.42
1:A:260:GLY:O	1:A:289:THR:HA	2.19	0.41
1:B:200:VAL:HB	1:B:507:LEU:HD21	2.03	0.41
1:A:364:VAL:HG12	1:A:368:GLN:HG3	2.03	0.41

Continued on next page...

Continued from previous page...

Atom-1	Atom-2	Interatomic distance (Å)	Clash overlap (Å)
1:B:25:GLU:O	1:B:29:ARG:HG3	2.21	0.41
1:A:138:ALA:HB2	1:A:188:ALA:HA	2.03	0.40
1:A:126:LYS:HG2	1:A:317:PHE:CE1	2.56	0.40

There are no symmetry-related clashes.

5.3 Torsion angles [i](#)

5.3.1 Protein backbone [i](#)

In the following table, the Percentiles column shows the percent Ramachandran outliers of the chain as a percentile score with respect to all X-ray entries followed by that with respect to entries of similar resolution.

The Analysed column shows the number of residues for which the backbone conformation was analysed, and the total number of residues.

Mol	Chain	Analysed	Favoured	Allowed	Outliers	Percentiles	
1	A	516/516 (100%)	506 (98%)	10 (2%)	0	100	100
1	B	518/516 (100%)	509 (98%)	9 (2%)	0	100	100
All	All	1034/1032 (100%)	1015 (98%)	19 (2%)	0	100	100

There are no Ramachandran outliers to report.

5.3.2 Protein sidechains [i](#)

In the following table, the Percentiles column shows the percent sidechain outliers of the chain as a percentile score with respect to all X-ray entries followed by that with respect to entries of similar resolution.

The Analysed column shows the number of residues for which the sidechain conformation was analysed, and the total number of residues.

Mol	Chain	Analysed	Rotameric	Outliers	Percentiles	
1	A	409/407 (100%)	403 (98%)	6 (2%)	65	56
1	B	411/407 (101%)	403 (98%)	8 (2%)	57	46
All	All	820/814 (101%)	806 (98%)	14 (2%)	59	51

All (14) residues with a non-rotameric sidechain are listed below:

Mol	Chain	Res	Type
1	A	1	MET
1	A	101	LEU
1	A	207	LYS
1	A	344	LYS
1	A	419	PHE
1	A	464	PHE
1	B	1	MET
1	B	23	MET
1	B	101	LEU
1	B	207	LYS
1	B	364	VAL
1	B	391	ARG
1	B	419	PHE
1	B	464	PHE

Some sidechains can be flipped to improve hydrogen bonding and reduce clashes. All (2) such sidechains are listed below:

Mol	Chain	Res	Type
1	A	381	ASN
1	A	384	GLN

5.3.3 RNA [i](#)

There are no RNA molecules in this entry.

5.4 Non-standard residues in protein, DNA, RNA chains [i](#)

There are no non-standard protein/DNA/RNA residues in this entry.

5.5 Carbohydrates [i](#)

There are no monosaccharides in this entry.

5.6 Ligand geometry [i](#)

Of 24 ligands modelled in this entry, 3 are monoatomic - leaving 21 for Mogul analysis.

In the following table, the Counts columns list the number of bonds (or angles) for which Mogul statistics could be retrieved, the number of bonds (or angles) that are observed in the model and the number of bonds (or angles) that are defined in the Chemical Component Dictionary. The

Link column lists molecule types, if any, to which the group is linked. The Z score for a bond length (or angle) is the number of standard deviations the observed value is removed from the expected value. A bond length (or angle) with $|Z| > 2$ is considered an outlier worth inspection. RMSZ is the root-mean-square of all Z scores of the bond lengths (or angles).

Mol	Type	Chain	Res	Link	Bond lengths			Bond angles		
					Counts	RMSZ	$\# Z > 2$	Counts	RMSZ	$\# Z > 2$
6	MPD	B	2537	-	7,7,7	0.27	0	9,10,10	0.39	0
6	MPD	A	1532	-	7,7,7	0.35	0	9,10,10	0.66	0
6	MPD	B	2538	-	7,7,7	0.29	0	9,10,10	0.46	0
3	ACT	A	1520	-	1,3,3	1.86	0	0,3,3	0.00	-
4	SER	B	2517	-	3,6,6	0.98	0	1,7,7	0.55	0
6	MPD	A	1533	-	7,7,7	0.31	0	9,10,10	0.23	0
6	MPD	B	2532	-	7,7,7	0.38	0	9,10,10	0.83	0
5	NAD	A	1518	-	42,48,48	1.60	3 (7%)	50,73,73	1.55	7 (14%)
6	MPD	B	2536	-	7,7,7	0.33	0	9,10,10	0.46	0
6	MPD	A	1535	-	7,7,7	0.36	0	9,10,10	0.58	0
3	ACT	B	2520	-	1,3,3	1.81	0	0,3,3	0.00	-
5	NAD	B	2518	-	42,48,48	1.61	3 (7%)	50,73,73	1.44	7 (14%)
6	MPD	A	1531	-	7,7,7	0.27	0	9,10,10	0.32	0
6	MPD	B	2531	-	7,7,7	0.25	0	9,10,10	0.24	0
4	SER	A	1517	-	3,6,6	1.06	0	1,7,7	0.47	0
6	MPD	B	2535	-	7,7,7	0.24	0	9,10,10	0.37	0
6	MPD	A	1534	-	7,7,7	0.30	0	9,10,10	0.43	0
6	MPD	A	2534	-	7,7,7	0.27	0	9,10,10	0.30	0
3	ACT	B	2519	-	1,3,3	0.87	0	0,3,3	0.00	-
6	MPD	B	2533	-	7,7,7	0.33	0	9,10,10	0.21	0
3	ACT	A	1519	-	1,3,3	1.21	0	0,3,3	0.00	-

In the following table, the Chirals column lists the number of chiral outliers, the number of chiral centers analysed, the number of these observed in the model and the number defined in the Chemical Component Dictionary. Similar counts are reported in the Torsion and Rings columns. '-' means no outliers of that kind were identified.

Mol	Type	Chain	Res	Link	Chirals	Torsions	Rings
6	MPD	B	2537	-	1/1/2/2	0/5/5/5	-
6	MPD	A	1532	-	-	1/5/5/5	-
5	NAD	A	1518	-	-	2/26/62/62	0/5/5/5
6	MPD	A	1533	-	1/1/2/2	2/5/5/5	-
6	MPD	B	2532	-	-	1/5/5/5	-
4	SER	B	2517	-	-	2/2/6/6	-
6	MPD	B	2536	-	1/1/2/2	0/5/5/5	-
6	MPD	A	1535	-	1/1/2/2	1/5/5/5	-
5	NAD	B	2518	-	-	1/26/62/62	0/5/5/5

Continued on next page...

Continued from previous page...

Mol	Type	Chain	Res	Link	Chirals	Torsions	Rings
6	MPD	A	1531	-	1/1/2/2	0/5/5/5	-
6	MPD	B	2531	-	-	1/5/5/5	-
4	SER	A	1517	-	-	2/2/6/6	-
6	MPD	B	2535	-	-	2/5/5/5	-
6	MPD	A	1534	-	-	0/5/5/5	-
6	MPD	A	2534	-	-	2/5/5/5	-
6	MPD	B	2533	-	1/1/2/2	2/5/5/5	-
6	MPD	B	2538	-	1/1/2/2	0/5/5/5	-

All (6) bond length outliers are listed below:

Mol	Chain	Res	Type	Atoms	Z	Observed(Å)	Ideal(Å)
5	A	1518	NAD	O7N-C7N	8.24	1.39	1.24
5	B	2518	NAD	O7N-C7N	7.83	1.39	1.24
5	B	2518	NAD	C2A-N3A	3.75	1.38	1.32
5	A	1518	NAD	C2A-N3A	3.15	1.37	1.32
5	A	1518	NAD	C2A-N1A	2.67	1.38	1.33
5	B	2518	NAD	C2A-N1A	2.54	1.38	1.33

All (14) bond angle outliers are listed below:

Mol	Chain	Res	Type	Atoms	Z	Observed(°)	Ideal(°)
5	A	1518	NAD	N3A-C2A-N1A	-6.51	118.50	128.68
5	B	2518	NAD	N3A-C2A-N1A	-5.72	119.74	128.68
5	A	1518	NAD	C3N-C7N-N7N	3.78	122.28	117.75
5	B	2518	NAD	O7N-C7N-C3N	-3.61	115.31	119.63
5	B	2518	NAD	C3N-C7N-N7N	3.53	121.99	117.75
5	A	1518	NAD	O4D-C1D-C2D	-3.45	101.88	106.93
5	A	1518	NAD	O7N-C7N-C3N	-3.23	115.77	119.63
5	B	2518	NAD	O4D-C1D-C2D	-3.04	102.48	106.93
5	A	1518	NAD	C1B-N9A-C4A	-2.59	122.09	126.64
5	B	2518	NAD	C1B-N9A-C4A	-2.47	122.30	126.64
5	B	2518	NAD	O2N-PN-O1N	2.41	124.13	112.24
5	B	2518	NAD	C4A-C5A-N7A	-2.07	107.24	109.40
5	A	1518	NAD	O2N-PN-O1N	2.06	122.43	112.24
5	A	1518	NAD	C2A-N1A-C6A	2.02	122.21	118.75

All (7) chirality outliers are listed below:

Mol	Chain	Res	Type	Atom
6	A	1533	MPD	C4

Continued on next page...

Continued from previous page...

Mol	Chain	Res	Type	Atom
6	B	2536	MPD	C4
6	A	1535	MPD	C4
6	A	1531	MPD	C4
6	B	2538	MPD	C4
6	B	2533	MPD	C4
6	B	2537	MPD	C4

All (19) torsion outliers are listed below:

Mol	Chain	Res	Type	Atoms
6	A	1533	MPD	C2-C3-C4-O4
4	B	2517	SER	N-CA-CB-OG
4	B	2517	SER	C-CA-CB-OG
6	A	1532	MPD	C2-C3-C4-O4
6	B	2533	MPD	C2-C3-C4-O4
6	B	2532	MPD	C2-C3-C4-O4
4	A	1517	SER	N-CA-CB-OG
4	A	1517	SER	C-CA-CB-OG
5	B	2518	NAD	C4D-C5D-O5D-PN
5	A	1518	NAD	C4D-C5D-O5D-PN
5	A	1518	NAD	PN-O3-PA-O5B
6	B	2535	MPD	O2-C2-C3-C4
6	A	1533	MPD	C2-C3-C4-C5
6	B	2533	MPD	C2-C3-C4-C5
6	B	2531	MPD	CM-C2-C3-C4
6	B	2535	MPD	C1-C2-C3-C4
6	A	2534	MPD	CM-C2-C3-C4
6	A	2534	MPD	O2-C2-C3-C4
6	A	1535	MPD	C2-C3-C4-C5

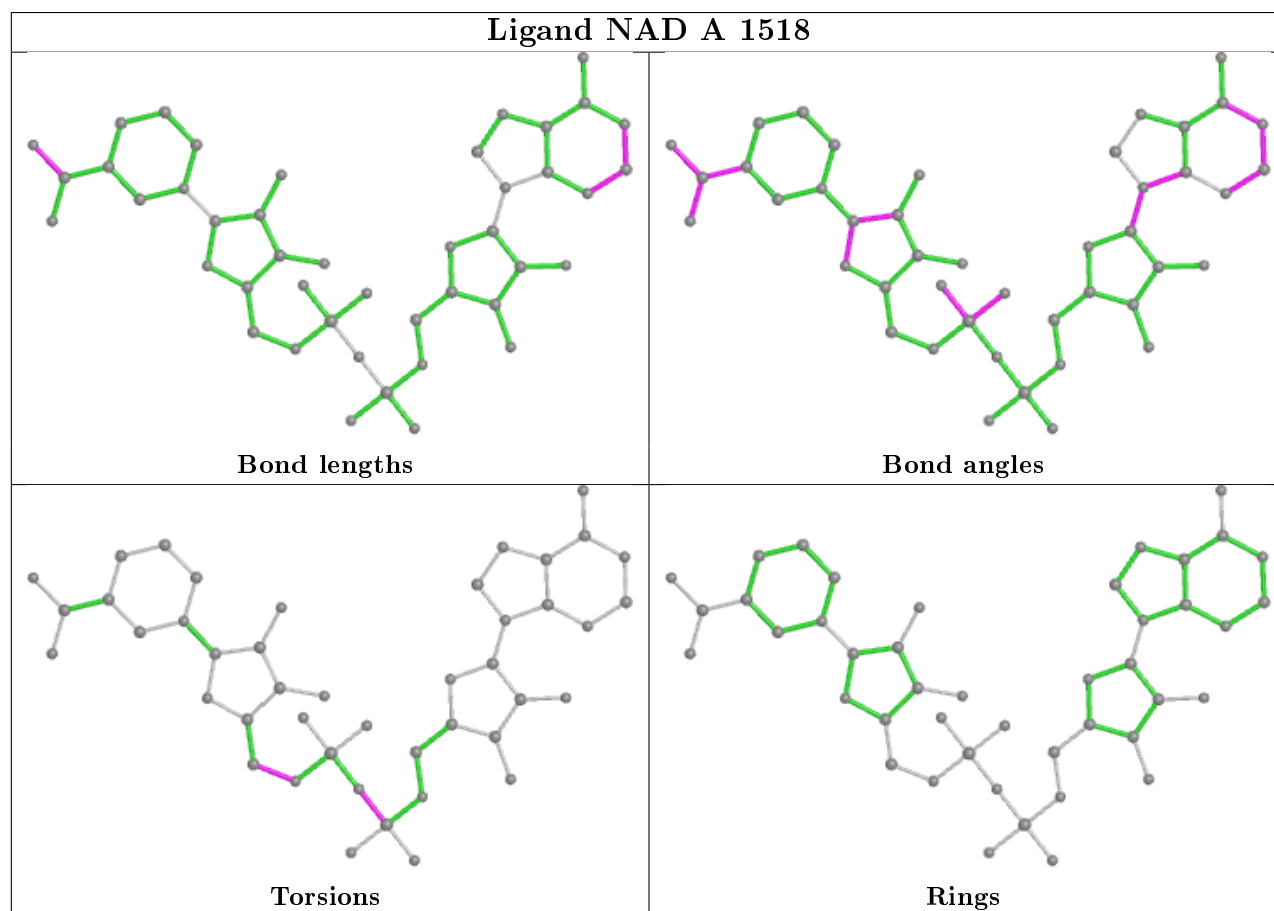
There are no ring outliers.

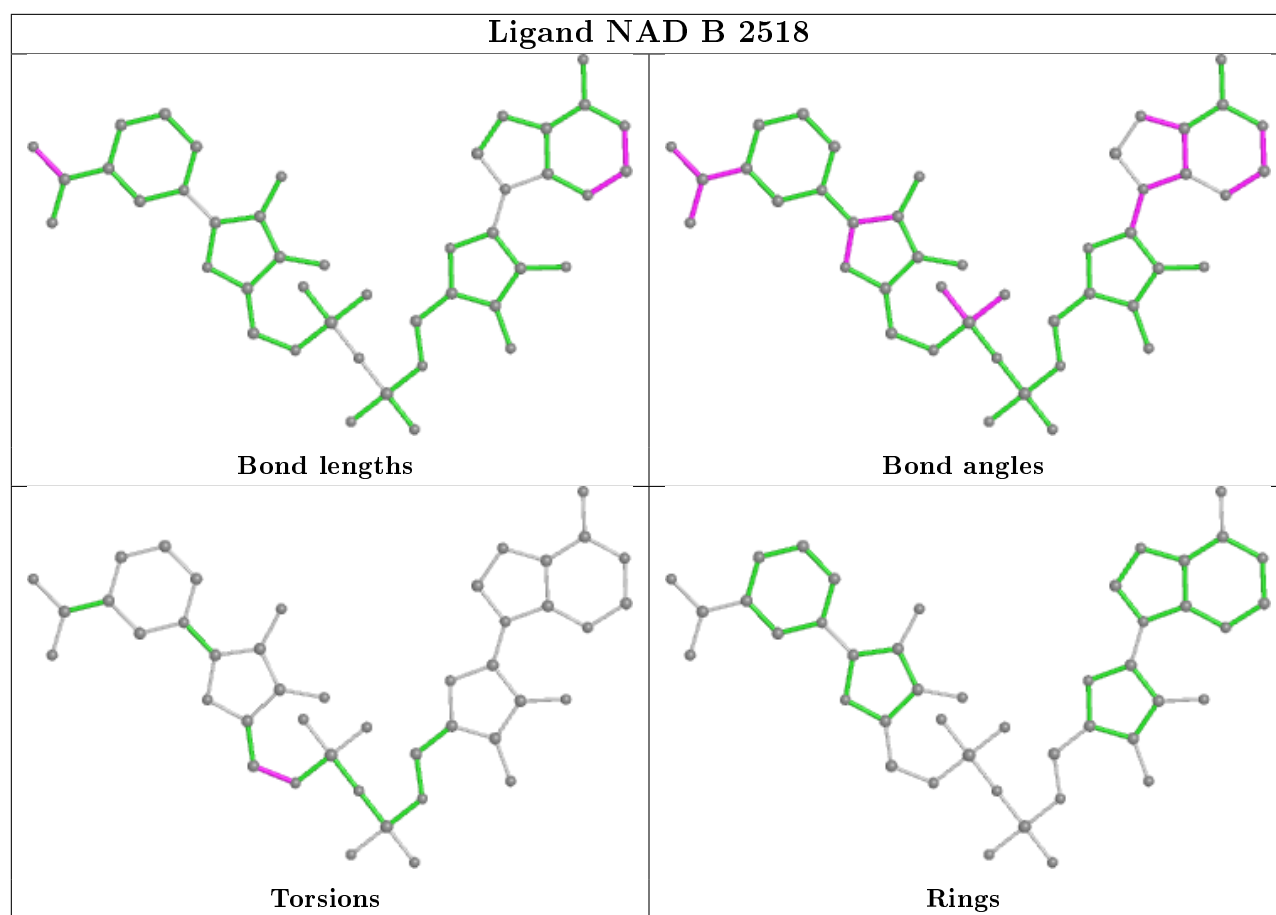
6 monomers are involved in 9 short contacts:

Mol	Chain	Res	Type	Clashes	Symm-Clashes
6	A	1532	MPD	1	0
3	A	1520	ACT	1	0
4	B	2517	SER	1	0
6	B	2532	MPD	1	0
5	A	1518	NAD	3	0
5	B	2518	NAD	2	0

The following is a two-dimensional graphical depiction of Mogul quality analysis of bond lengths,

bond angles, torsion angles, and ring geometry for all instances of the Ligand of Interest. In addition, ligands with molecular weight > 250 and outliers as shown on the validation Tables will also be included. For torsion angles, if less than 5% of the Mogul distribution of torsion angles is within 10 degrees of the torsion angle in question, then that torsion angle is considered an outlier. Any bond that is central to one or more torsion angles identified as an outlier by Mogul will be highlighted in the graph. For rings, the root-mean-square deviation (RMSD) between the ring in question and similar rings identified by Mogul is calculated over all ring torsion angles. If the average RMSD is greater than 60 degrees and the minimal RMSD between the ring in question and any Mogul-identified rings is also greater than 60 degrees, then that ring is considered an outlier. The outliers are highlighted in purple. The color gray indicates Mogul did not find sufficient equivalents in the CSD to analyse the geometry.





5.7 Other polymers [i](#)

There are no such residues in this entry.

5.8 Polymer linkage issues [i](#)

There are no chain breaks in this entry.

6 Fit of model and data [i](#)

6.1 Protein, DNA and RNA chains [i](#)

In the following table, the column labelled '#RSRZ> 2' contains the number (and percentage) of RSRZ outliers, followed by percent RSRZ outliers for the chain as percentile scores relative to all X-ray entries and entries of similar resolution. The OWAB column contains the minimum, median, 95th percentile and maximum values of the occupancy-weighted average B-factor per residue. The column labelled 'Q< 0.9' lists the number of (and percentage) of residues with an average occupancy less than 0.9.

Mol	Chain	Analysed	<RSRZ>	#RSRZ>2	OWAB(Å ²)	Q<0.9
1	A	516/516 (100%)	-0.69	3 (0%) 89 87	6, 11, 21, 31	0
1	B	516/516 (100%)	-0.64	0 100 100	6, 11, 21, 28	0
All	All	1032/1032 (100%)	-0.66	3 (0%) 94 92	6, 11, 21, 31	0

All (3) RSRZ outliers are listed below:

Mol	Chain	Res	Type	RSRZ
1	A	1	MET	2.4
1	A	15	GLN	2.1
1	A	50	LYS	2.0

6.2 Non-standard residues in protein, DNA, RNA chains [i](#)

There are no non-standard protein/DNA/RNA residues in this entry.

6.3 Carbohydrates [i](#)

There are no monosaccharides in this entry.

6.4 Ligands [i](#)

In the following table, the Atoms column lists the number of modelled atoms in the group and the number defined in the chemical component dictionary. The B-factors column lists the minimum, median, 95th percentile and maximum values of B factors of atoms in the group. The column labelled 'Q< 0.9' lists the number of atoms with occupancy less than 0.9.

Mol	Type	Chain	Res	Atoms	RSCC	RSR	B-factors(Å ²)	Q<0.9
6	MPD	B	2538	8/8	0.61	0.26	37,41,43,44	0
6	MPD	A	1531	8/8	0.72	0.21	32,36,39,39	0

Continued on next page...

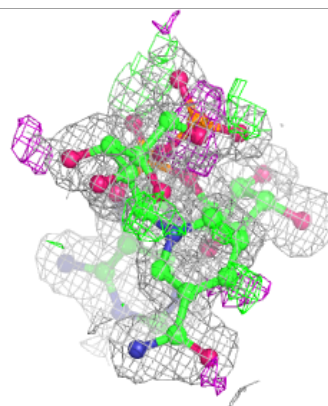
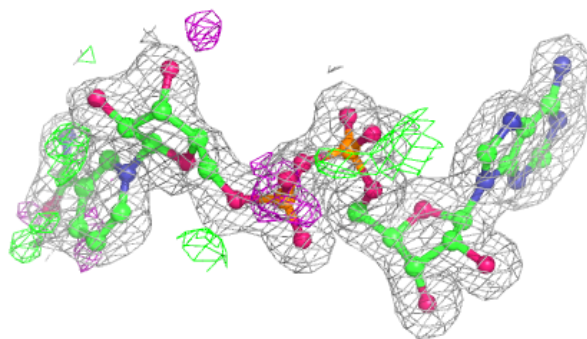
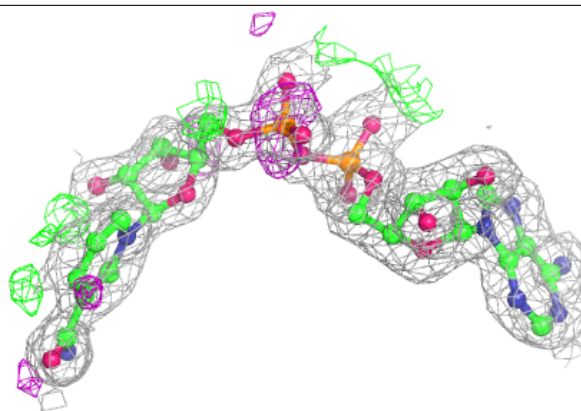
Continued from previous page...

Mol	Type	Chain	Res	Atoms	RSCC	RSR	B-factors(\AA^2)	Q<0.9
6	MPD	A	1534	8/8	0.73	0.23	43,45,46,47	0
6	MPD	B	2537	8/8	0.74	0.24	41,43,43,44	0
6	MPD	A	1533	8/8	0.78	0.21	39,39,40,40	0
6	MPD	B	2533	8/8	0.81	0.19	41,41,43,43	0
6	MPD	B	2535	8/8	0.83	0.17	26,27,28,28	0
4	SER	A	1517	7/7	0.85	0.17	17,20,22,27	0
6	MPD	A	2534	8/8	0.85	0.20	36,36,38,38	0
4	SER	B	2517	7/7	0.86	0.17	17,20,21,25	0
6	MPD	A	1535	8/8	0.88	0.18	23,26,27,28	0
6	MPD	B	2536	8/8	0.88	0.22	25,28,29,29	0
6	MPD	B	2531	8/8	0.90	0.17	34,35,36,36	0
6	MPD	B	2532	8/8	0.93	0.10	20,22,23,24	0
6	MPD	A	1532	8/8	0.94	0.13	20,23,24,24	0
2	NA	A	1540	1/1	0.96	0.08	20,20,20,20	0
5	NAD	B	2518	44/44	0.96	0.08	7,17,23,24	0
5	NAD	A	1518	44/44	0.96	0.09	8,16,22,23	0
3	ACT	B	2520	4/4	0.97	0.07	15,15,15,15	0
2	NA	B	2540[B]	1/1	0.97	0.14	16,16,16,16	1
3	ACT	A	1519	4/4	0.97	0.07	13,14,14,14	0
2	NA	B	2540[A]	1/1	0.97	0.14	5,5,5,5	1
3	ACT	A	1520	4/4	0.98	0.06	15,15,15,15	0
3	ACT	B	2519	4/4	0.98	0.05	13,14,14,14	0

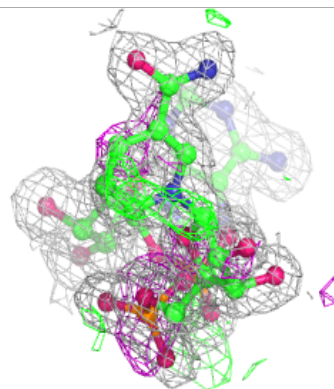
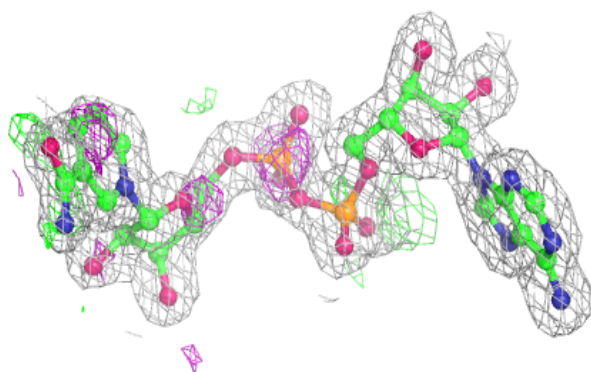
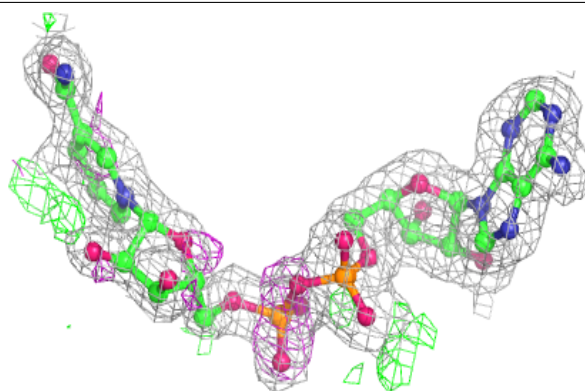
The following is a graphical depiction of the model fit to experimental electron density of all instances of the Ligand of Interest. In addition, ligands with molecular weight > 250 and outliers as shown on the geometry validation Tables will also be included. Each fit is shown from different orientation to approximate a three-dimensional view.

Electron density around NAD B 2518:

$2mF_o-DF_c$ (at 0.7 rmsd) in gray
 mF_o-DF_c (at 3 rmsd) in purple (negative)
and green (positive)

**Electron density around NAD A 1518:**

$2mF_o-DF_c$ (at 0.7 rmsd) in gray
 mF_o-DF_c (at 3 rmsd) in purple (negative)
and green (positive)



6.5 Other polymers

There are no such residues in this entry.