



Full wwPDB X-ray Structure Validation Report ⓘ

Aug 21, 2020 – 01:37 PM BST

PDB ID : 4EHV
Title : Human p38 MAP kinase in complex with NP-F10 and RL87
Authors : Over, B.; Gruetter, C.; Waldmann, H.; Rauh, D.
Deposited on : 2012-04-04
Resolution : 1.60 Å(reported)

This is a Full wwPDB X-ray Structure Validation Report for a publicly released PDB entry.

We welcome your comments at validation@mail.wwpdb.org

A user guide is available at

<https://www.wwpdb.org/validation/2017/XrayValidationReportHelp>

with specific help available everywhere you see the ⓘ symbol.

The following versions of software and data (see [references ⓘ](#)) were used in the production of this report:

MolProbity : 4.02b-467
Mogul : 1.8.5 (274361), CSD as541be (2020)
Xtriage (Phenix) : 1.13
EDS : 2.13.1
buster-report : 1.1.7 (2018)
Percentile statistics : 20191225.v01 (using entries in the PDB archive December 25th 2019)
Refmac : 5.8.0158
CCP4 : 7.0.044 (Gargrove)
Ideal geometry (proteins) : Engh & Huber (2001)
Ideal geometry (DNA, RNA) : Parkinson et al. (1996)
Validation Pipeline (wwPDB-VP) : 2.13.1

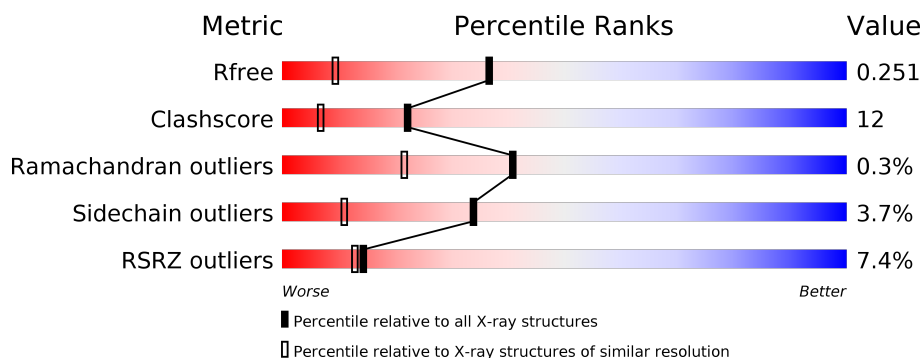
1 Overall quality at a glance

The following experimental techniques were used to determine the structure:

X-RAY DIFFRACTION

The reported resolution of this entry is 1.60 Å.

Percentile scores (ranging between 0-100) for global validation metrics of the entry are shown in the following graphic. The table shows the number of entries on which the scores are based.



Metric	Whole archive (#Entries)	Similar resolution (#Entries, resolution range(Å))
R_{free}	130704	3398 (1.60-1.60)
Clashscore	141614	3665 (1.60-1.60)
Ramachandran outliers	138981	3564 (1.60-1.60)
Sidechain outliers	138945	3563 (1.60-1.60)
RSRZ outliers	127900	3321 (1.60-1.60)

The table below summarises the geometric issues observed across the polymeric chains and their fit to the electron density. The red, orange, yellow and green segments on the lower bar indicate the fraction of residues that contain outliers for ≥ 3 , 2, 1 and 0 types of geometric quality criteria respectively. A grey segment represents the fraction of residues that are not modelled. The numeric value for each fraction is indicated below the corresponding segment, with a dot representing fractions $\leq 5\%$. The upper red bar (where present) indicates the fraction of residues that have poor fit to the electron density. The numeric value is given above the bar.

Mol	Chain	Length	Quality of chain
1	A	360	

The following table lists non-polymeric compounds, carbohydrate monomers and non-standard residues in protein, DNA, RNA chains that are outliers for geometric or electron-density-fit criteria:

Mol	Type	Chain	Res	Chirality	Geometry	Clashes	Electron density
2	0SJ	A	402	-	-	X	-

2 Entry composition [i](#)

There are 4 unique types of molecules in this entry. The entry contains 3067 atoms, of which 0 are hydrogens and 0 are deuteriums.

In the tables below, the ZeroOcc column contains the number of atoms modelled with zero occupancy, the AltConf column contains the number of residues with at least one atom in alternate conformation and the Trace column contains the number of residues modelled with at most 2 atoms.

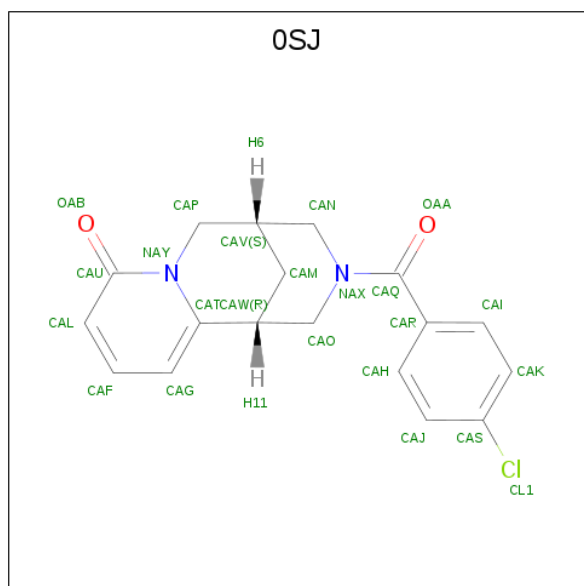
- Molecule 1 is a protein called Mitogen-activated protein kinase 14.

Mol	Chain	Residues	Atoms					ZeroOcc	AltConf	Trace
			Total	C	N	O	S			
1	A	337	2814	1814	474	511	15	0	16	0

There is a discrepancy between the modelled and reference sequences:

Chain	Residue	Modelled	Actual	Comment	Reference
A	1	GLY	-	EXPRESSION TAG	UNP Q16539

- Molecule 2 is (1R,5S)-3-(4-chlorobenzoyl)-1,2,3,4,5,6-hexahydro-8H-1,5-methanopyrido[1,2-a][1,5]diazocin-8-one (three-letter code: 0SJ) (formula: C₁₈H₁₇ClN₂O₂).



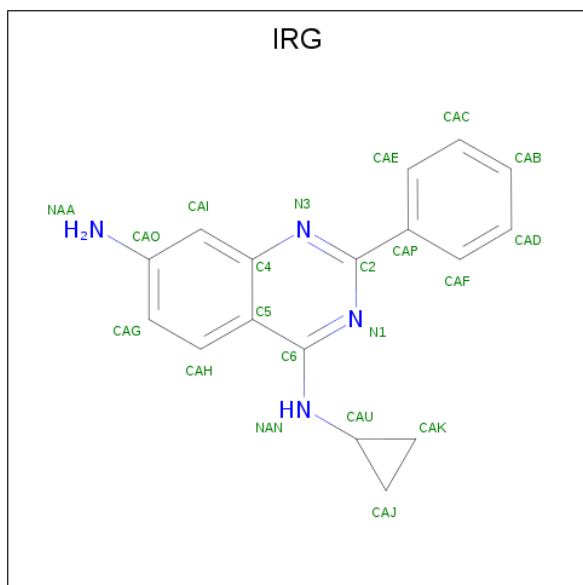
Mol	Chain	Residues	Atoms					ZeroOcc	AltConf
			Total	C	Cl	N	O		
2	A	1	23	18	1	2	2	0	0
2	A	1	23	18	1	2	2	0	0

Continued on next page...

Continued from previous page...

Mol	Chain	Residues	Atoms					ZeroOcc	AltConf
2	A	1	Total	C	Cl	N	O	0	1
			23	18	1	2	2		

- Molecule 3 is N 4 -cyclopropyl-2-phenylquinazoline-4,7-diamine (three-letter code: IRG) (formula: C₁₇H₁₆N₄).



Mol	Chain	Residues	Atoms			ZeroOcc	AltConf
3	A	1	Total	C	N	0	1
			21	17	4		

- Molecule 4 is water.

Mol	Chain	Residues	Atoms		ZeroOcc	AltConf
4	A	163	Total	O	0	0
			163	163		

4 Data and refinement statistics

Property	Value	Source
Space group	P 21 21 21	Depositor
Cell constants a, b, c, α , β , γ	63.83Å 75.11Å 77.57Å 90.00° 90.00° 90.00°	Depositor
Resolution (Å)	45.00 – 1.60 49.29 – 1.60	Depositor EDS
% Data completeness (in resolution range)	91.8 (45.00-1.60) 91.8 (49.29-1.60)	Depositor EDS
R_{merge}	0.03	Depositor
R_{sym}	(Not available)	Depositor
$\langle I/\sigma(I) \rangle$ ¹	1.65 (at 1.60Å)	Xtriage
Refinement program	REFMAC	Depositor
R, R_{free}	0.221 , 0.252 0.220 , 0.251	Depositor DCC
R_{free} test set	2290 reflections (5.00%)	wwPDB-VP
Wilson B-factor (Å ²)	22.2	Xtriage
Anisotropy	0.177	Xtriage
Bulk solvent k_{sol} (e/Å ³), B_{sol} (Å ²)	0.37 , 48.2	EDS
L-test for twinning ²	$\langle L \rangle = 0.48$, $\langle L^2 \rangle = 0.32$	Xtriage
Estimated twinning fraction	0.022 for -h,l,k	Xtriage
F_o, F_c correlation	0.95	EDS
Total number of atoms	3067	wwPDB-VP
Average B, all atoms (Å ²)	24.0	wwPDB-VP

Xtriage's analysis on translational NCS is as follows: *The largest off-origin peak in the Patterson function is 5.78% of the height of the origin peak. No significant pseudotranslation is detected.*

¹Intensities estimated from amplitudes.

²Theoretical values of $\langle |L| \rangle$, $\langle L^2 \rangle$ for acentric reflections are 0.5, 0.333 respectively for untwinned datasets, and 0.375, 0.2 for perfectly twinned datasets.

5 Model quality [i](#)

5.1 Standard geometry [i](#)

Bond lengths and bond angles in the following residue types are not validated in this section: 0SJ, IRG

The Z score for a bond length (or angle) is the number of standard deviations the observed value is removed from the expected value. A bond length (or angle) with $|Z| > 5$ is considered an outlier worth inspection. RMSZ is the root-mean-square of all Z scores of the bond lengths (or angles).

Mol	Chain	Bond lengths		Bond angles	
		RMSZ	$\# Z > 5$	RMSZ	$\# Z > 5$
1	A	4.66	2/2910 (0.1%)	1.17	6/3953 (0.2%)

All (2) bond length outliers are listed below:

Mol	Chain	Res	Type	Atoms	Z	Observed(Å)	Ideal(Å)
1	A	199[A]	HIS	CB-CG	177.20	4.69	1.50
1	A	199[B]	HIS	CB-CG	177.20	4.69	1.50

All (6) bond angle outliers are listed below:

Mol	Chain	Res	Type	Atoms	Z	Observed(°)	Ideal(°)
1	A	199[A]	HIS	CA-CB-CG	-41.87	42.42	113.60
1	A	199[B]	HIS	CA-CB-CG	-41.87	42.42	113.60
1	A	199[A]	HIS	CB-CG-ND1	14.37	159.12	123.20
1	A	199[B]	HIS	CB-CG-ND1	14.37	159.12	123.20
1	A	199[A]	HIS	CB-CG-CD2	-13.23	89.77	130.80
1	A	199[B]	HIS	CB-CG-CD2	-13.23	89.77	130.80

There are no chirality outliers.

There are no planarity outliers.

5.2 Too-close contacts [i](#)

In the following table, the Non-H and H(model) columns list the number of non-hydrogen atoms and hydrogen atoms in the chain respectively. The H(added) column lists the number of hydrogen atoms added and optimized by MolProbity. The Clashes column lists the number of clashes within the asymmetric unit, whereas Symm-Clashes lists symmetry related clashes.

Mol	Chain	Non-H	H(model)	H(added)	Clashes	Symm-Clashes
1	A	2814	0	2821	68	0
2	A	69	0	51	16	0
3	A	21	0	16	5	0
4	A	163	0	0	1	0
All	All	3067	0	2888	68	0

The all-atom clashscore is defined as the number of clashes found per 1000 atoms (including hydrogen atoms). The all-atom clashscore for this structure is 12.

All (68) close contacts within the same asymmetric unit are listed below, sorted by their clash magnitude.

Atom-1	Atom-2	Interatomic distance (Å)	Clash overlap (Å)
1:A:200[B]:TYR:CE2	2:A:402:0SJ:H14	1.35	1.60
1:A:200[B]:TYR:CZ	2:A:402:0SJ:H14	1.62	1.31
1:A:193[A]:ILE:HD11	2:A:402:0SJ:CL1	1.75	1.23
1:A:200[B]:TYR:CE2	2:A:402:0SJ:CAH	2.21	1.22
1:A:193[A]:ILE:CD1	2:A:402:0SJ:CL1	2.26	1.21
1:A:196[B]:ASN:OD1	1:A:196[B]:ASN:O	1.67	1.12
1:A:196[A]:ASN:O	1:A:197[A]:TRP:CD1	2.08	1.07
1:A:196[A]:ASN:HD22	1:A:199[A]:HIS:HB2	1.33	0.92
1:A:200[B]:TYR:CD2	2:A:402:0SJ:H14	2.06	0.90
1:A:196[A]:ASN:ND2	1:A:199[A]:HIS:HB2	1.85	0.89
1:A:196[A]:ASN:OD1	1:A:197[A]:TRP:N	2.07	0.88
1:A:193[A]:ILE:HD13	2:A:402:0SJ:CL1	2.10	0.87
1:A:196[A]:ASN:O	1:A:197[A]:TRP:HD1	1.60	0.85
1:A:195[B]:LEU:HD12	3:A:403[B]:IRG:HAK	1.56	0.84
1:A:196[A]:ASN:HD21	1:A:199[A]:HIS:C	1.82	0.83
1:A:196[A]:ASN:ND2	1:A:199[A]:HIS:CB	2.43	0.81
1:A:200[B]:TYR:CZ	2:A:402:0SJ:CAH	2.54	0.80
1:A:148:HIS:HD2	1:A:150:ASP:H	1.28	0.78
1:A:196[A]:ASN:C	1:A:196[A]:ASN:OD1	2.21	0.77
1:A:195[B]:LEU:HD12	3:A:403[B]:IRG:CAK	2.14	0.76
1:A:195[B]:LEU:CD1	3:A:403[B]:IRG:HAK	2.21	0.71
1:A:200[B]:TYR:CD2	2:A:402:0SJ:CAH	2.72	0.70
1:A:67:ARG:HG2	1:A:67:ARG:HH11	1.57	0.69
1:A:198[B]:MET:O	1:A:198[B]:MET:HG2	1.94	0.67
1:A:195[B]:LEU:O	1:A:196[B]:ASN:HB3	1.95	0.66
1:A:196[A]:ASN:HD21	1:A:199[A]:HIS:CA	2.10	0.64
1:A:200[B]:TYR:CD1	1:A:200[B]:TYR:N	2.65	0.63
1:A:196[A]:ASN:ND2	1:A:199[A]:HIS:CA	2.63	0.62
1:A:200[B]:TYR:H	1:A:200[B]:TYR:HD1	1.47	0.61
1:A:10:ARG:HB3	1:A:17:ILE:HD11	1.83	0.61

Continued on next page...

Continued from previous page...

Atom-1	Atom-2	Interatomic distance (Å)	Clash overlap (Å)
1:A:200[B]:TYR:CD2	2:A:402:OSJ:H15	2.36	0.61
1:A:193[A]:ILE:HD13	2:A:402:OSJ:CAS	2.33	0.58
1:A:200[B]:TYR:CD2	2:A:402:OSJ:CAJ	2.87	0.57
1:A:193[B]:ILE:O	1:A:195[B]:LEU:N	2.38	0.57
1:A:200[B]:TYR:OH	2:A:402:OSJ:CAQ	2.53	0.56
1:A:269:ASN:HD22	1:A:269:ASN:C	2.10	0.53
1:A:250:ILE:CD1	1:A:259:ILE:HD11	2.39	0.53
1:A:148:HIS:CD2	1:A:150:ASP:H	2.18	0.53
1:A:196[A]:ASN:ND2	1:A:199[A]:HIS:O	2.38	0.53
1:A:193[A]:ILE:O	1:A:193[A]:ILE:HG22	2.10	0.52
1:A:148:HIS:HE1	1:A:167:LEU:O	1.93	0.52
1:A:196[B]:ASN:O	1:A:196[B]:ASN:CG	2.45	0.52
1:A:200[B]:TYR:CE2	2:A:402:OSJ:CAJ	2.90	0.51
1:A:197[B]:TRP:HB2	3:A:403[B]:IRG:CAE	2.43	0.49
1:A:196[A]:ASN:O	2:A:404[A]:OSJ:H1	2.15	0.47
1:A:189:ARG:HD3	1:A:193[A]:ILE:HD12	1.97	0.47
1:A:193[B]:ILE:C	1:A:195[B]:LEU:N	2.67	0.47
1:A:195[B]:LEU:HD12	3:A:403[B]:IRG:HAKA	1.95	0.47
1:A:201:ASN:HD22	1:A:201:ASN:C	2.18	0.46
1:A:196[B]:ASN:OD1	1:A:196[B]:ASN:C	2.48	0.46
1:A:138:LEU:HD21	1:A:151:LEU:HD11	1.98	0.46
1:A:312:HIS:HD2	1:A:317:GLU:OE1	1.98	0.46
1:A:222:LEU:HD13	1:A:223:PHE:CE1	2.51	0.45
1:A:36:GLY:HA2	1:A:56:SER:OG	2.15	0.45
1:A:38:VAL:HG22	1:A:53[A]:LYS:HG3	1.98	0.45
1:A:250:ILE:HD13	1:A:259:ILE:HD11	1.99	0.45
1:A:196[A]:ASN:ND2	1:A:199[A]:HIS:H	2.16	0.44
1:A:196[A]:ASN:OD1	1:A:197[A]:TRP:CA	2.65	0.44
1:A:200[B]:TYR:CZ	2:A:402:OSJ:CAQ	3.01	0.43
1:A:67:ARG:NH1	4:A:624:HOH:O	2.52	0.43
1:A:57:ARG:HD2	1:A:60[A]:GLN:NE2	2.33	0.43
1:A:60[B]:GLN:HG2	1:A:64:HIS:ND1	2.34	0.42
1:A:256:ARG:HG2	1:A:260:GLN:HE21	1.83	0.42
1:A:196[A]:ASN:ND2	1:A:199[A]:HIS:N	2.67	0.42
1:A:193[B]:ILE:C	1:A:195[B]:LEU:H	2.23	0.42
1:A:269:ASN:HD22	1:A:270:PHE:N	2.17	0.41
1:A:156:LEU:HD11	1:A:212:ILE:HD13	2.03	0.41
1:A:28:SER:HA	1:A:29:PRO:HD3	1.98	0.41

There are no symmetry-related clashes.

5.3 Torsion angles [i](#)

5.3.1 Protein backbone [i](#)

In the following table, the Percentiles column shows the percent Ramachandran outliers of the chain as a percentile score with respect to all X-ray entries followed by that with respect to entries of similar resolution.

The Analysed column shows the number of residues for which the backbone conformation was analysed, and the total number of residues.

Mol	Chain	Analysed	Favoured	Allowed	Outliers	Percentiles
1	A	349/360 (97%)	332 (95%)	15 (4%)	2 (1%)	25 8

All (2) Ramachandran outliers are listed below:

Mol	Chain	Res	Type
1	A	194[A]	MET
1	A	194[B]	MET

5.3.2 Protein sidechains [i](#)

In the following table, the Percentiles column shows the percent sidechain outliers of the chain as a percentile score with respect to all X-ray entries followed by that with respect to entries of similar resolution.

The Analysed column shows the number of residues for which the sidechain conformation was analysed, and the total number of residues.

Mol	Chain	Analysed	Rotameric	Outliers	Percentiles
1	A	311/319 (98%)	299 (96%)	12 (4%)	32 10

All (12) residues with a non-rotameric sidechain are listed below:

Mol	Chain	Res	Type
1	A	15	LYS
1	A	16	THR
1	A	171	LEU
1	A	189	ARG
1	A	196[A]	ASN
1	A	196[B]	ASN
1	A	201	ASN
1	A	222	LEU
1	A	232	LEU

Continued on next page...

Continued from previous page...

Mol	Chain	Res	Type
1	A	247	LEU
1	A	269	ASN
1	A	334	ILE

Some sidechains can be flipped to improve hydrogen bonding and reduce clashes. All (12) such sidechains are listed below:

Mol	Chain	Res	Type
1	A	26	ASN
1	A	114	ASN
1	A	126	HIS
1	A	128	GLN
1	A	148	HIS
1	A	201	ASN
1	A	202	GLN
1	A	257	ASN
1	A	260	GLN
1	A	269	ASN
1	A	312	HIS
1	A	325	GLN

5.3.3 RNA [i](#)

There are no RNA molecules in this entry.

5.4 Non-standard residues in protein, DNA, RNA chains [i](#)

There are no non-standard protein/DNA/RNA residues in this entry.

5.5 Carbohydrates [i](#)

There are no monosaccharides in this entry.

5.6 Ligand geometry [i](#)

4 ligands are modelled in this entry.

In the following table, the Counts columns list the number of bonds (or angles) for which Mogul statistics could be retrieved, the number of bonds (or angles) that are observed in the model and the number of bonds (or angles) that are defined in the Chemical Component Dictionary. The

Link column lists molecule types, if any, to which the group is linked. The Z score for a bond length (or angle) is the number of standard deviations the observed value is removed from the expected value. A bond length (or angle) with $|Z| > 2$ is considered an outlier worth inspection. RMSZ is the root-mean-square of all Z scores of the bond lengths (or angles).

Mol	Type	Chain	Res	Link	Bond lengths			Bond angles		
					Counts	RMSZ	# Z > 2	Counts	RMSZ	# Z > 2
2	0SJ	A	402	-	22,26,26	1.99	3 (13%)	27,38,38	1.61	4 (14%)
2	0SJ	A	404[A]	-	22,26,26	2.00	2 (9%)	27,38,38	1.66	4 (14%)
3	IRG	A	403[B]	-	23,24,24	1.65	5 (21%)	33,34,34	2.15	8 (24%)
2	0SJ	A	401	-	22,26,26	1.91	4 (18%)	27,38,38	1.77	5 (18%)

In the following table, the Chirals column lists the number of chiral outliers, the number of chiral centers analysed, the number of these observed in the model and the number defined in the Chemical Component Dictionary. Similar counts are reported in the Torsion and Rings columns. '-' means no outliers of that kind were identified.

Mol	Type	Chain	Res	Link	Chirals	Torsions	Rings
2	0SJ	A	402	-	-	0/8/28/28	0/4/4/4
2	0SJ	A	404[A]	-	-	0/8/28/28	0/4/4/4
3	IRG	A	403[B]	-	-	2/8/10/10	0/4/4/4
2	0SJ	A	401	-	-	0/8/28/28	0/4/4/4

All (14) bond length outliers are listed below:

Mol	Chain	Res	Type	Atoms	Z	Observed(Å)	Ideal(Å)
2	A	402	0SJ	CAT-CAW	-6.70	1.39	1.50
2	A	404[A]	0SJ	CAT-CAW	-6.55	1.39	1.50
2	A	404[A]	0SJ	CAR-CAQ	-5.90	1.40	1.50
2	A	402	0SJ	CAR-CAQ	-5.77	1.40	1.50
2	A	401	0SJ	CAR-CAQ	-5.59	1.40	1.50
3	A	403[B]	IRG	C6-C5	-4.75	1.38	1.44
2	A	401	0SJ	CAT-CAW	-4.40	1.43	1.50
3	A	403[B]	IRG	CAP-C2	-3.52	1.39	1.48
2	A	401	0SJ	CAN-NAX	3.36	1.50	1.46
2	A	402	0SJ	CAU-NAY	-2.32	1.34	1.38
2	A	401	0SJ	CAO-NAX	2.18	1.49	1.46
3	A	403[B]	IRG	C5-C4	-2.08	1.39	1.42
3	A	403[B]	IRG	CAJ-CAU	2.07	1.53	1.48
3	A	403[B]	IRG	CAK-CAU	2.01	1.53	1.48

All (21) bond angle outliers are listed below:

Mol	Chain	Res	Type	Atoms	Z	Observed(°)	Ideal(°)
3	A	403[B]	IRG	N3-C2-N1	-6.37	121.11	126.11
3	A	403[B]	IRG	C2-N3-C4	6.03	120.59	116.50
2	A	404[A]	0SJ	CAG-CAT-CAW	-5.74	116.62	121.70
3	A	403[B]	IRG	C6-C5-C4	5.12	119.10	115.88
2	A	402	0SJ	CAG-CAT-CAW	-4.63	117.60	121.70
2	A	401	0SJ	CAG-CAT-CAW	-4.50	117.72	121.70
2	A	402	0SJ	CAP-CAV-CAN	-4.46	108.43	112.76
2	A	401	0SJ	CAP-CAV-CAN	-4.32	108.56	112.76
2	A	404[A]	0SJ	CAP-CAV-CAN	-3.67	109.19	112.76
2	A	401	0SJ	CAR-CAQ-NAX	3.52	123.19	118.72
3	A	403[B]	IRG	C5-C4-N3	-3.46	119.14	122.81
2	A	401	0SJ	CAM-CAW-CAO	-2.60	107.21	109.76
2	A	402	0SJ	CAR-CAQ-NAX	2.60	122.02	118.72
2	A	404[A]	0SJ	CAR-CAQ-NAX	2.58	121.99	118.72
3	A	403[B]	IRG	CAH-C5-C6	-2.54	120.57	124.06
2	A	402	0SJ	CAL-CAU-NAY	2.41	121.30	117.22
3	A	403[B]	IRG	C6-NAN-CAU	-2.33	119.73	124.16
2	A	404[A]	0SJ	CAL-CAU-NAY	2.25	121.04	117.22
3	A	403[B]	IRG	CAJ-CAU-NAN	-2.12	114.92	118.52
2	A	401	0SJ	OAA-CAQ-CAR	-2.11	116.11	120.23
3	A	403[B]	IRG	CAK-CAU-NAN	-2.10	114.95	118.52

There are no chirality outliers.

All (2) torsion outliers are listed below:

Mol	Chain	Res	Type	Atoms
3	A	403[B]	IRG	N1-C6-NAN-CAU
3	A	403[B]	IRG	C5-C6-NAN-CAU

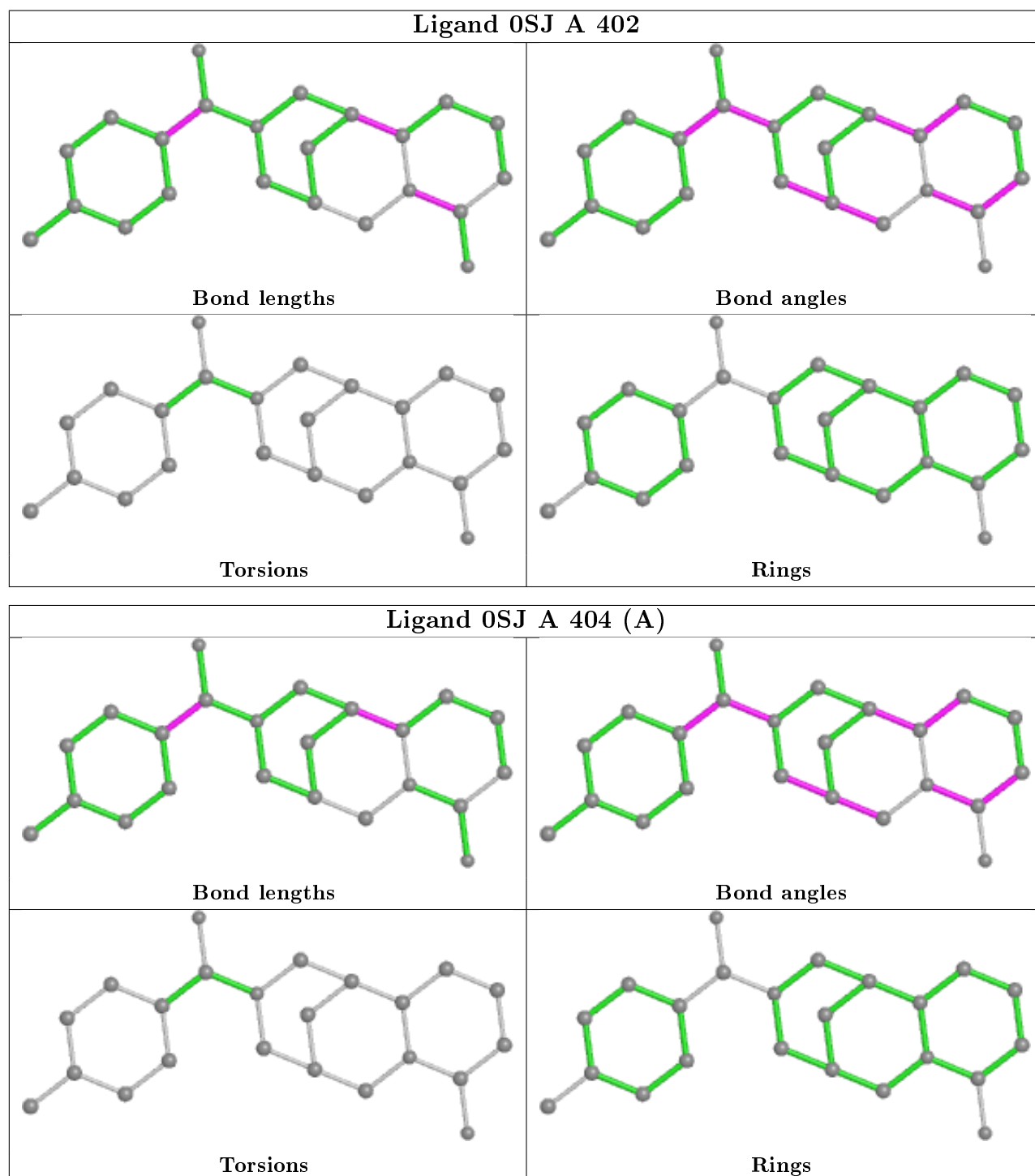
There are no ring outliers.

3 monomers are involved in 21 short contacts:

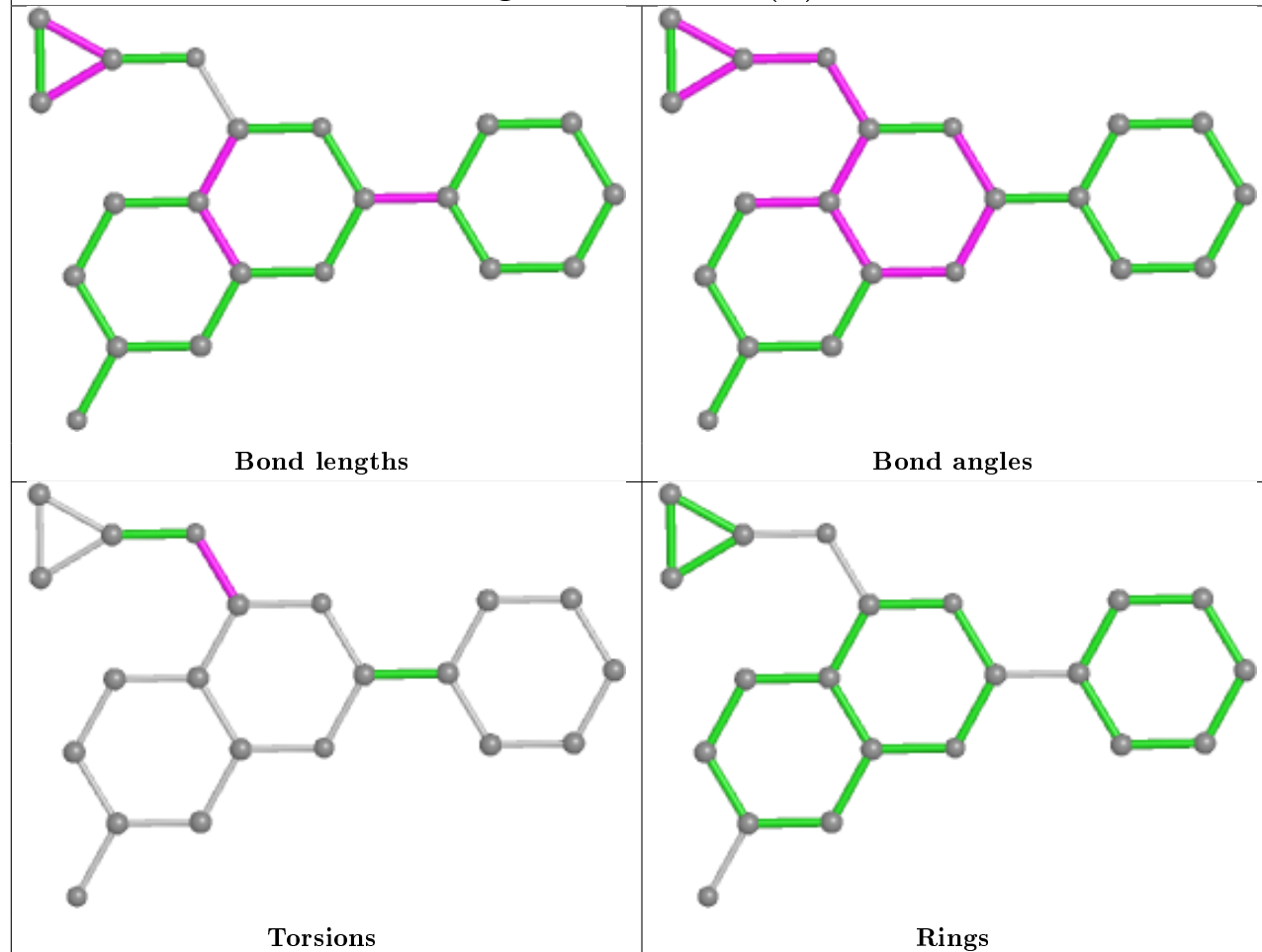
Mol	Chain	Res	Type	Clashes	Symm-Clashes
2	A	402	0SJ	15	0
2	A	404[A]	0SJ	1	0
3	A	403[B]	IRG	5	0

The following is a two-dimensional graphical depiction of Mogul quality analysis of bond lengths, bond angles, torsion angles, and ring geometry for all instances of the Ligand of Interest. In addition, ligands with molecular weight > 250 and outliers as shown on the validation Tables will also be included. For torsion angles, if less than 5% of the Mogul distribution of torsion angles is within 10 degrees of the torsion angle in question, then that torsion angle is considered an outlier. Any bond that is central to one or more torsion angles identified as an outlier by Mogul will be

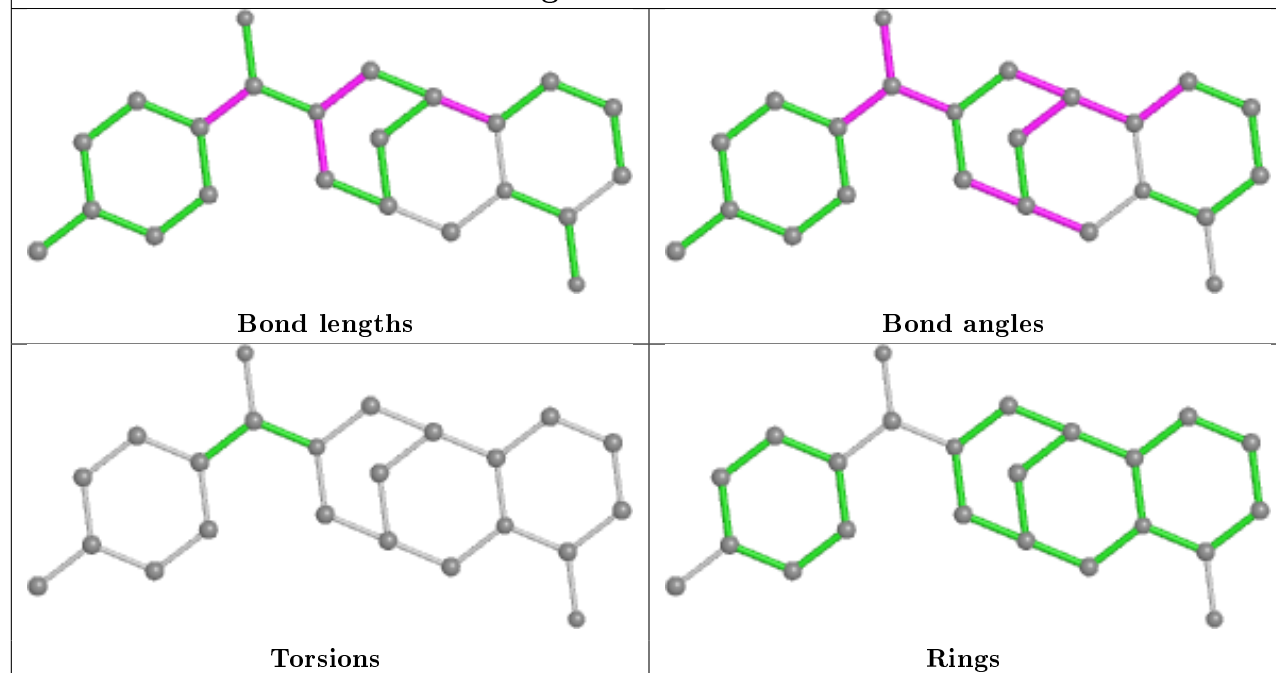
highlighted in the graph. For rings, the root-mean-square deviation (RMSD) between the ring in question and similar rings identified by Mogul is calculated over all ring torsion angles. If the average RMSD is greater than 60 degrees and the minimal RMSD between the ring in question and any Mogul-identified rings is also greater than 60 degrees, then that ring is considered an outlier. The outliers are highlighted in purple. The color gray indicates Mogul did not find sufficient equivalents in the CSD to analyse the geometry.



Ligand IRG A 403 (B)



Ligand OSJ A 401



5.7 Other polymers

There are no such residues in this entry.

5.8 Polymer linkage issues

There are no chain breaks in this entry.

6 Fit of model and data

6.1 Protein, DNA and RNA chains

In the following table, the column labelled ‘#RSRZ> 2’ contains the number (and percentage) of RSRZ outliers, followed by percent RSRZ outliers for the chain as percentile scores relative to all X-ray entries and entries of similar resolution. The OWAB column contains the minimum, median, 95th percentile and maximum values of the occupancy-weighted average B-factor per residue. The column labelled ‘Q< 0.9’ lists the number of (and percentage) of residues with an average occupancy less than 0.9.

Mol	Chain	Analysed	<RSRZ>	#RSRZ>2	OWAB(Å ²)	Q<0.9
1	A	337/360 (93%)	0.26	25 (7%) 14 13	13, 23, 36, 47	2 (0%)

All (25) RSRZ outliers are listed below:

Mol	Chain	Res	Type	RSRZ
1	A	119	CYS	8.9
1	A	15	LYS	8.2
1	A	117	VAL	4.6
1	A	34	ALA	4.0
1	A	183	VAL	3.8
1	A	197[A]	TRP	3.7
1	A	352	PRO	3.5
1	A	196[A]	ASN	3.4
1	A	171	LEU	3.4
1	A	63	ILE	3.3
1	A	118	LYS	3.3
1	A	35	TYR	3.2
1	A	263	THR	3.1
1	A	120	GLN	3.0
1	A	17	ILE	2.7
1	A	258	TYR	2.6
1	A	33	GLY	2.6
1	A	16	THR	2.6
1	A	14	ASN	2.6
1	A	49	ARG	2.4
1	A	57	ARG	2.3
1	A	264	GLN	2.4
1	A	200[A]	TYR	2.2
1	A	334	ILE	2.1
1	A	125	ASP	2.1

6.2 Non-standard residues in protein, DNA, RNA chains [i](#)

There are no non-standard protein/DNA/RNA residues in this entry.

6.3 Carbohydrates [i](#)

There are no monosaccharides in this entry.

6.4 Ligands [i](#)

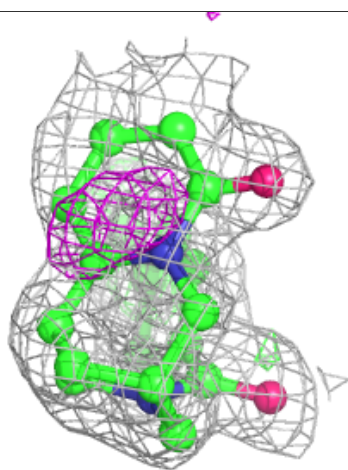
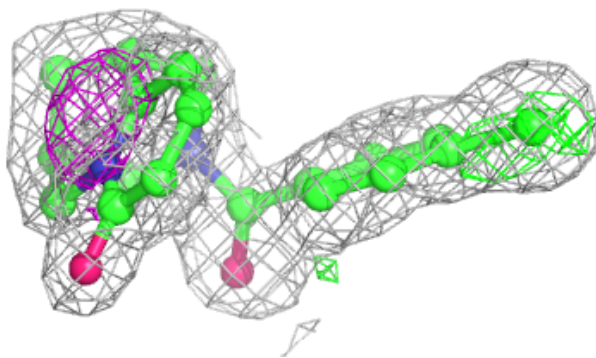
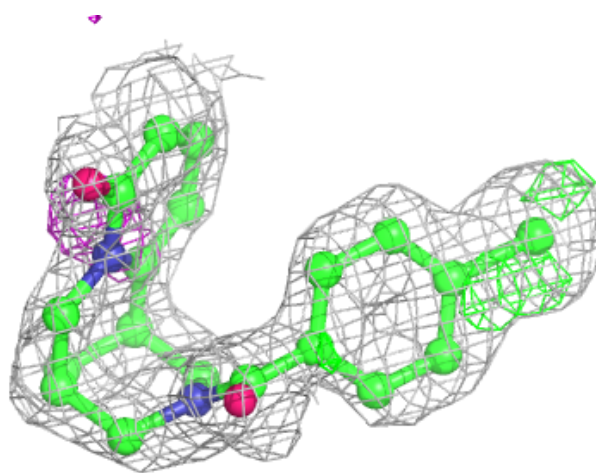
In the following table, the Atoms column lists the number of modelled atoms in the group and the number defined in the chemical component dictionary. The B-factors column lists the minimum, median, 95th percentile and maximum values of B factors of atoms in the group. The column labelled 'Q< 0.9' lists the number of atoms with occupancy less than 0.9.

Mol	Type	Chain	Res	Atoms	RSCC	RSR	B-factors(\AA^2)	Q<0.9
2	0SJ	A	404[A]	23/23	0.77	0.23	15,16,17,18	23
3	IRG	A	403[B]	21/21	0.79	0.23	18,19,23,23	21
2	0SJ	A	402	23/23	0.85	0.25	15,22,24,24	23
2	0SJ	A	401	23/23	0.92	0.12	20,21,21,23	0

The following is a graphical depiction of the model fit to experimental electron density of all instances of the Ligand of Interest. In addition, ligands with molecular weight > 250 and outliers as shown on the geometry validation Tables will also be included. Each fit is shown from different orientation to approximate a three-dimensional view.

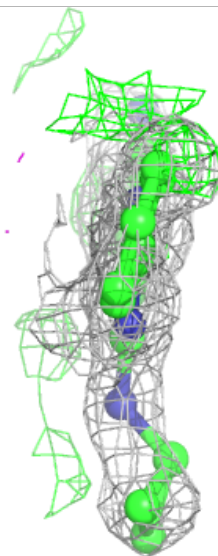
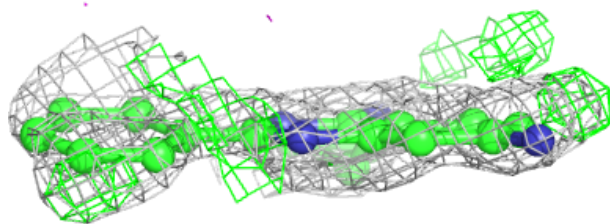
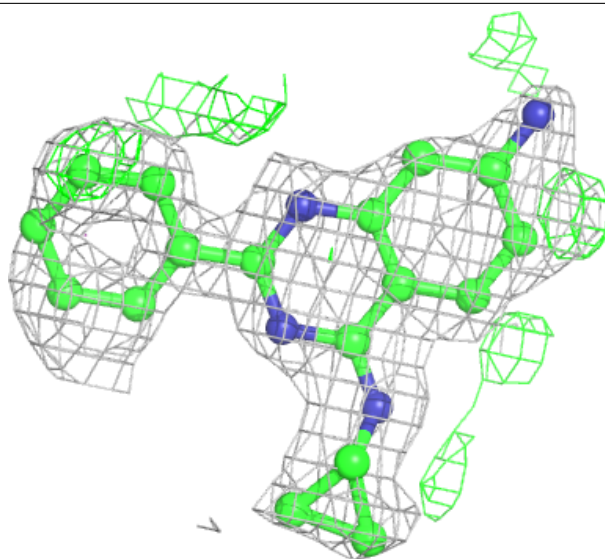
Electron density around 0SJ A 404 (A):

$2mF_o-DF_c$ (at 0.7 rmsd) in gray
 mF_o-DF_c (at 3 rmsd) in purple (negative)
and green (positive)



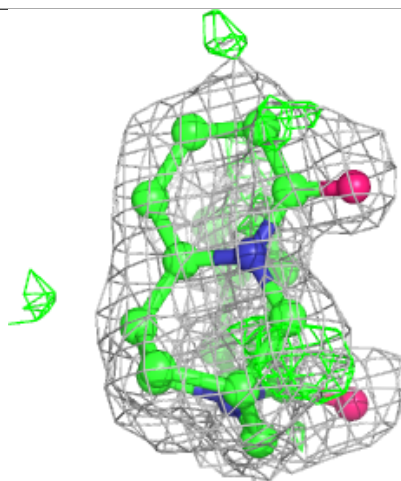
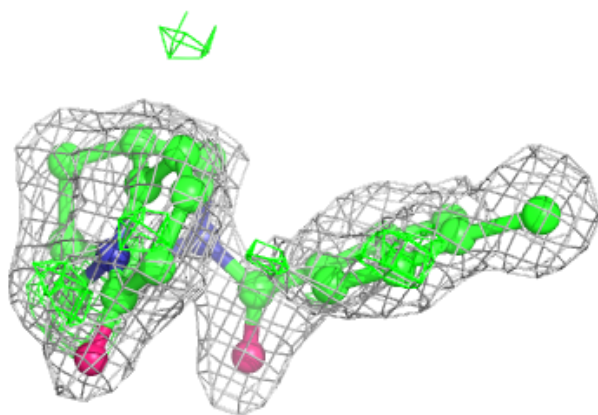
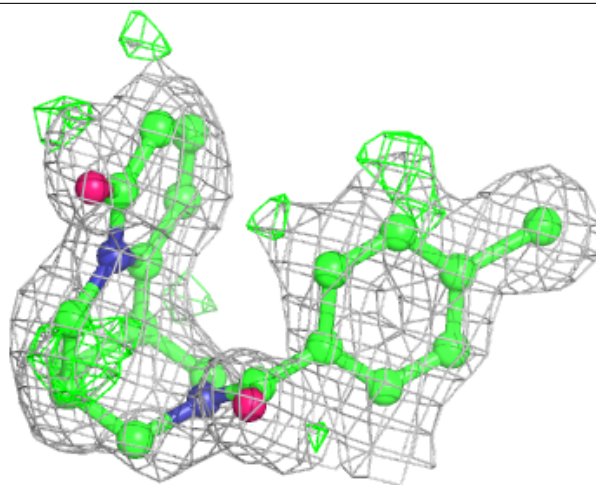
Electron density around IRG A 403 (B):

$2mF_o-DF_c$ (at 0.7 rmsd) in gray
 mF_o-DF_c (at 3 rmsd) in purple (negative)
and green (positive)



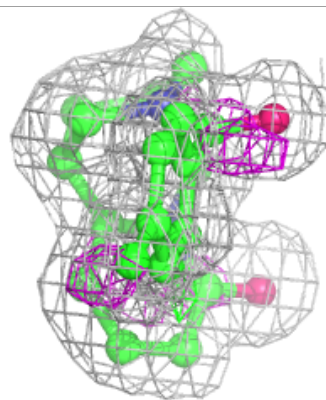
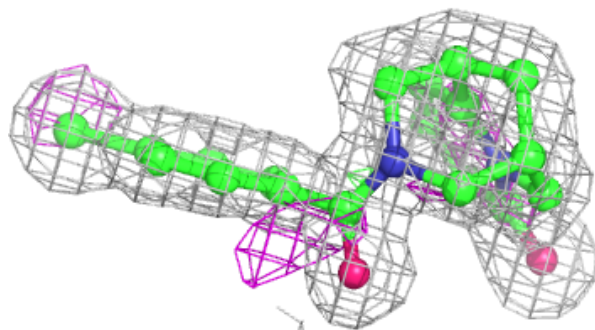
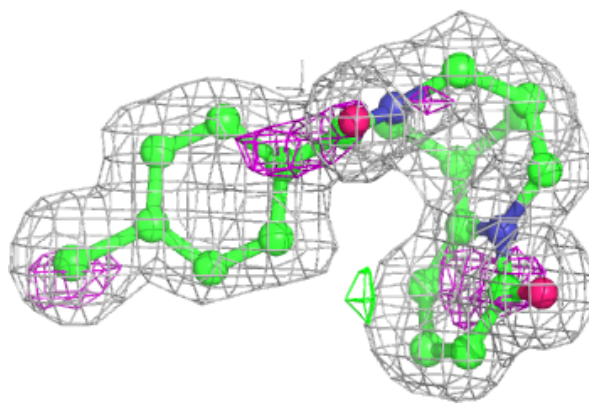
Electron density around 0SJ A 402:

$2mF_o-DF_c$ (at 0.7 rmsd) in gray
 mF_o-DF_c (at 3 rmsd) in purple (negative)
and green (positive)



Electron density around OSJ A 401:

$2mF_o-DF_c$ (at 0.7 rmsd) in gray
 mF_o-DF_c (at 3 rmsd) in purple (negative)
and green (positive)



6.5 Other polymers [i](#)

There are no such residues in this entry.