



Full wwPDB X-ray Structure Validation Report ⓘ

Mar 28, 2022 – 06:04 PM JST

PDB ID : 7EIX
Title : Human histidine decarboxylase mutant Y334F
Authors : Komori, H.
Deposited on : 2021-04-01
Resolution : 1.90 Å(reported)

This is a Full wwPDB X-ray Structure Validation Report for a publicly released PDB entry.

We welcome your comments at validation@mail.wwpdb.org

A user guide is available at

<https://www.wwpdb.org/validation/2017/XrayValidationReportHelp>

with specific help available everywhere you see the ⓘ symbol.

The following versions of software and data (see [references ⓘ](#)) were used in the production of this report:

MolProbity : 4.02b-467
Mogul : 1.8.5 (274361), CSD as541be (2020)
Xtriage (Phenix) : 1.13
EDS : 2.27
Percentile statistics : 20191225.v01 (using entries in the PDB archive December 25th 2019)
Refmac : 5.8.0158
CCP4 : 7.0.044 (Gargrove)
Ideal geometry (proteins) : Engh & Huber (2001)
Ideal geometry (DNA, RNA) : Parkinson et al. (1996)
Validation Pipeline (wwPDB-VP) : 2.27

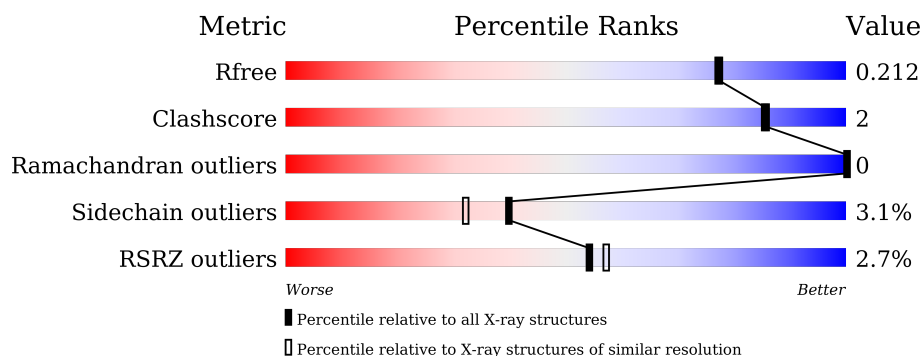
1 Overall quality at a glance

The following experimental techniques were used to determine the structure:

X-RAY DIFFRACTION

The reported resolution of this entry is 1.90 Å.

Percentile scores (ranging between 0-100) for global validation metrics of the entry are shown in the following graphic. The table shows the number of entries on which the scores are based.



Metric	Whole archive (#Entries)	Similar resolution (#Entries, resolution range(Å))
R_{free}	130704	6207 (1.90-1.90)
Clashscore	141614	6847 (1.90-1.90)
Ramachandran outliers	138981	6760 (1.90-1.90)
Sidechain outliers	138945	6760 (1.90-1.90)
RSRZ outliers	127900	6082 (1.90-1.90)

The table below summarises the geometric issues observed across the polymeric chains and their fit to the electron density. The red, orange, yellow and green segments of the lower bar indicate the fraction of residues that contain outliers for ≥ 3 , 2, 1 and 0 types of geometric quality criteria respectively. A grey segment represents the fraction of residues that are not modelled. The numeric value for each fraction is indicated below the corresponding segment, with a dot representing fractions $\leq 5\%$. The upper red bar (where present) indicates the fraction of residues that have poor fit to the electron density. The numeric value is given above the bar.

Mol	Chain	Length	Quality of chain
1	A	481	<div> <div style="width: 100%; height: 10px; background: linear-gradient(to right, red, orange, yellow, green, grey);"></div> <div style="display: flex; justify-content: space-between; margin-top: 2px;"> % 87% 10% . </div> </div>
1	B	481	<div> <div style="width: 100%; height: 10px; background: linear-gradient(to right, red, orange, yellow, green, grey);"></div> <div style="display: flex; justify-content: space-between; margin-top: 2px;"> 4% 91% 5% . </div> </div>

2 Entry composition

There are 4 unique types of molecules in this entry. The entry contains 7898 atoms, of which 0 are hydrogens and 0 are deuteriums.

In the tables below, the ZeroOcc column contains the number of atoms modelled with zero occupancy, the AltConf column contains the number of residues with at least one atom in alternate conformation and the Trace column contains the number of residues modelled with at most 2 atoms.

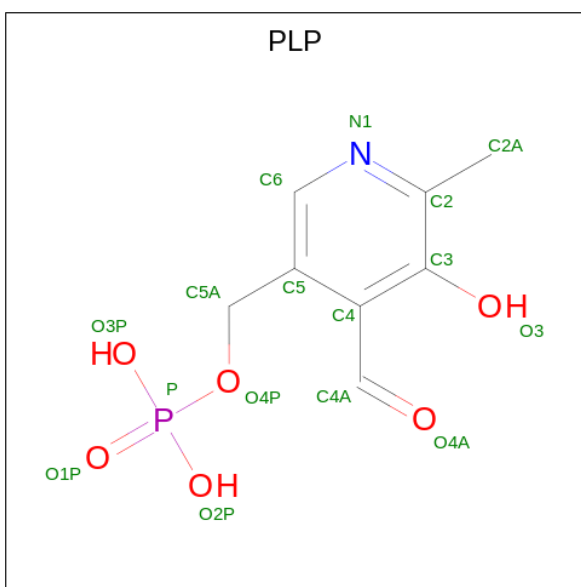
- Molecule 1 is a protein called Histidine decarboxylase.

Mol	Chain	Residues	Atoms					ZeroOcc	AltConf	Trace
1	A	467	Total	C	N	O	S	0	5	0
			3745	2399	637	686	23			
1	B	464	Total	C	N	O	S	0	4	0
			3721	2382	635	681	23			

There are 14 discrepancies between the modelled and reference sequences:

Chain	Residue	Modelled	Actual	Comment	Reference
A	-3	GLY	-	expression tag	UNP P19113
A	-2	PRO	-	expression tag	UNP P19113
A	-1	LEU	-	expression tag	UNP P19113
A	0	GLY	-	expression tag	UNP P19113
A	1	SER	-	expression tag	UNP P19113
A	180	SER	CYS	engineered mutation	UNP P19113
A	418	SER	CYS	engineered mutation	UNP P19113
B	-3	GLY	-	expression tag	UNP P19113
B	-2	PRO	-	expression tag	UNP P19113
B	-1	LEU	-	expression tag	UNP P19113
B	0	GLY	-	expression tag	UNP P19113
B	1	SER	-	expression tag	UNP P19113
B	180	SER	CYS	engineered mutation	UNP P19113
B	418	SER	CYS	engineered mutation	UNP P19113

- Molecule 2 is PYRIDOXAL-5'-PHOSPHATE (three-letter code: PLP) (formula: C₈H₁₀NO₆P).



Mol	Chain	Residues	Atoms					ZeroOcc	AltConf
2	A	1	Total	C	N	O	P	0	0
			15	8	1	5	1		
2	B	1	Total	C	N	O	P	0	0
			15	8	1	5	1		

- Molecule 3 is SULFATE ION (three-letter code: SO₄) (formula: O₄S).



Mol	Chain	Residues	Atoms		ZeroOcc	AltConf
3	A	1	Total	O S	0	0
			5	4 1		

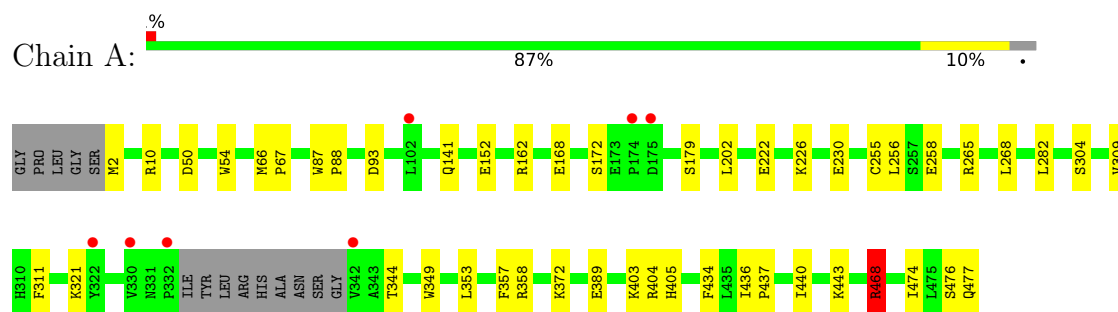
- Molecule 4 is water.

Mol	Chain	Residues	Atoms		ZeroOcc	AltConf
4	A	235	Total 235	O 235	0	0
4	B	162	Total 162	O 162	0	0

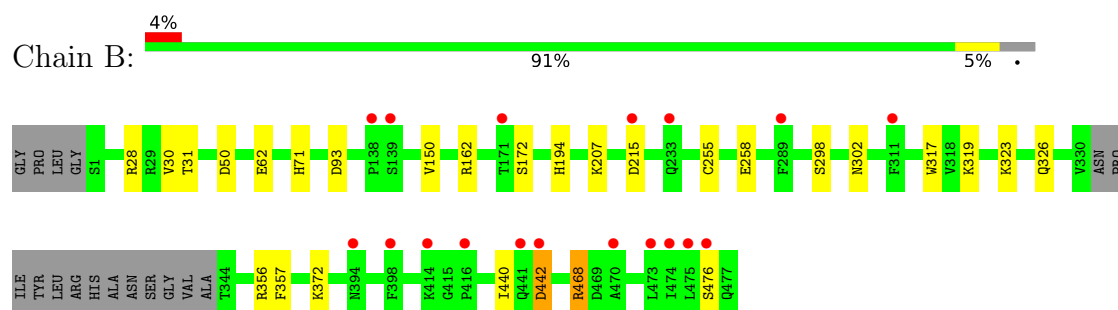
3 Residue-property plots

These plots are drawn for all protein, RNA, DNA and oligosaccharide chains in the entry. The first graphic for a chain summarises the proportions of the various outlier classes displayed in the second graphic. The second graphic shows the sequence view annotated by issues in geometry and electron density. Residues are color-coded according to the number of geometric quality criteria for which they contain at least one outlier: green = 0, yellow = 1, orange = 2 and red = 3 or more. A red dot above a residue indicates a poor fit to the electron density ($RSRZ > 2$). Stretches of 2 or more consecutive residues without any outlier are shown as a green connector. Residues present in the sample, but not in the model, are shown in grey.

• Molecule 1: Histidine decarboxylase



• Molecule 1: Histidine decarboxylase



4 Data and refinement statistics

Property	Value	Source
Space group	P 21 21 21	Depositor
Cell constants a, b, c, α , β , γ	57.98Å 85.09Å 188.30Å 90.00° 90.00° 90.00°	Depositor
Resolution (Å)	34.30 – 1.90 34.30 – 1.90	Depositor EDS
% Data completeness (in resolution range)	99.2 (34.30-1.90) 99.2 (34.30-1.90)	Depositor EDS
R_{merge}	0.09	Depositor
R_{sym}	(Not available)	Depositor
$\langle I/\sigma(I) \rangle$ ¹	2.14 (at 1.89Å)	Xtriage
Refinement program	REFMAC 5.8.0267	Depositor
R, R_{free}	0.167 , 0.206 0.176 , 0.212	Depositor DCC
R_{free} test set	3719 reflections (5.04%)	wwPDB-VP
Wilson B-factor (Å ²)	23.9	Xtriage
Anisotropy	0.095	Xtriage
Bulk solvent k_{sol} (e/Å ³), B_{sol} (Å ²)	0.35 , 39.8	EDS
L-test for twinning ²	$\langle L \rangle = 0.48$, $\langle L^2 \rangle = 0.31$	Xtriage
Estimated twinning fraction	No twinning to report.	Xtriage
F_o, F_c correlation	0.96	EDS
Total number of atoms	7898	wwPDB-VP
Average B, all atoms (Å ²)	29.0	wwPDB-VP

Xtriage's analysis on translational NCS is as follows: *The largest off-origin peak in the Patterson function is 4.13% of the height of the origin peak. No significant pseudotranslation is detected.*

¹Intensities estimated from amplitudes.

²Theoretical values of $\langle |L| \rangle$, $\langle L^2 \rangle$ for acentric reflections are 0.5, 0.333 respectively for untwinned datasets, and 0.375, 0.2 for perfectly twinned datasets.

5 Model quality

5.1 Standard geometry

Bond lengths and bond angles in the following residue types are not validated in this section: CSX, PLP, SO4

The Z score for a bond length (or angle) is the number of standard deviations the observed value is removed from the expected value. A bond length (or angle) with $|Z| > 5$ is considered an outlier worth inspection. RMSZ is the root-mean-square of all Z scores of the bond lengths (or angles).

Mol	Chain	Bond lengths		Bond angles	
		RMSZ	$\# Z > 5$	RMSZ	$\# Z > 5$
1	A	0.84	3/3847 (0.1%)	0.94	7/5217 (0.1%)
1	B	0.79	1/3819 (0.0%)	0.88	0/5175
All	All	0.82	4/7666 (0.1%)	0.91	7/10392 (0.1%)

All (4) bond length outliers are listed below:

Mol	Chain	Res	Type	Atoms	Z	Observed(Å)	Ideal(Å)
1	A	152	GLU	CD-OE2	7.60	1.34	1.25
1	A	222	GLU	CD-OE1	6.07	1.32	1.25
1	B	62	GLU	CD-OE2	-5.26	1.19	1.25
1	A	389	GLU	CD-OE2	-5.03	1.20	1.25

All (7) bond angle outliers are listed below:

Mol	Chain	Res	Type	Atoms	Z	Observed(°)	Ideal(°)
1	A	265	ARG	NE-CZ-NH2	-10.87	114.87	120.30
1	A	265	ARG	NE-CZ-NH1	8.75	124.67	120.30
1	A	404	ARG	NE-CZ-NH2	-7.11	116.74	120.30
1	A	468	ARG	NE-CZ-NH2	-6.72	116.94	120.30
1	A	404	ARG	NE-CZ-NH1	6.36	123.48	120.30
1	A	358	ARG	CG-CD-NE	5.73	123.84	111.80
1	A	358	ARG	NE-CZ-NH1	5.21	122.90	120.30

There are no chirality outliers.

There are no planarity outliers.

5.2 Too-close contacts ⓘ

In the following table, the Non-H and H(model) columns list the number of non-hydrogen atoms and hydrogen atoms in the chain respectively. The H(added) column lists the number of hydrogen atoms added and optimized by MolProbity. The Clashes column lists the number of clashes within the asymmetric unit, whereas Symm-Clashes lists symmetry-related clashes.

Mol	Chain	Non-H	H(model)	H(added)	Clashes	Symm-Clashes
1	A	3745	0	3707	23	0
1	B	3721	0	3684	15	0
2	A	15	0	6	0	0
2	B	15	0	6	0	0
3	A	5	0	0	0	0
4	A	235	0	0	2	0
4	B	162	0	0	2	0
All	All	7898	0	7403	32	0

The all-atom clashscore is defined as the number of clashes found per 1000 atoms (including hydrogen atoms). The all-atom clashscore for this structure is 2.

All (32) close contacts within the same asymmetric unit are listed below, sorted by their clash magnitude.

Atom-1	Atom-2	Interatomic distance (Å)	Clash overlap (Å)
1:A:468:ARG:O	1:A:468:ARG:HD3	1.94	0.68
1:A:10:ARG:HD2	1:A:54:TRP:CD1	2.29	0.67
1:A:353:LEU:HD22	1:B:194:HIS:CE1	2.37	0.58
1:B:442:ASP:OD2	1:B:442:ASP:N	2.41	0.53
1:B:30:VAL:HG23	4:B:1115:HOH:O	2.09	0.52
1:A:372:LYS:HE3	1:B:50:ASP:OD1	2.10	0.51
1:A:443:LYS:HD3	4:A:686:HOH:O	2.12	0.49
1:A:311:PHE:HD2	1:B:356:ARG:HB3	1.79	0.48
1:B:28:ARG:HD2	1:B:71:HIS:CE1	2.49	0.48
1:A:476:SER:O	1:A:477:GLN:C	2.51	0.48
1:A:66:MET:N	1:A:67:PRO:CD	2.76	0.47
1:B:255:CSX:HG	1:B:258:GLU:HG3	1.77	0.47
1:A:403:LYS:HD3	1:A:405:HIS:CE1	2.50	0.46
1:A:304:SER:HA	1:A:309:VAL:O	2.15	0.46
1:A:436:ILE:HG23	1:A:437:PRO:HD2	1.98	0.46
1:A:255:CSX:HG	1:A:258:GLU:HG3	1.82	0.45
1:B:323:LYS:O	1:B:326[B]:GLN:HG2	2.16	0.45
1:A:311:PHE:CD2	1:B:356:ARG:HB3	2.52	0.44
1:A:87:TRP:HB2	1:A:88:PRO:HD3	2.01	0.43
1:A:344[A]:THR:HG21	1:A:349:TRP:CZ2	2.54	0.43

Continued on next page...

Continued from previous page...

Atom-1	Atom-2	Interatomic distance (Å)	Clash overlap (Å)
1:A:202:LEU:HD12	4:A:654:HOH:O	2.18	0.43
1:A:434:PHE:CZ	1:A:436:ILE:HD11	2.54	0.43
1:A:468:ARG:O	1:A:468:ARG:CD	2.65	0.42
1:A:50:ASP:OD1	1:B:372:LYS:HE2	2.20	0.42
1:A:226:LYS:HE3	1:A:230:GLU:OE1	2.19	0.41
1:A:268:LEU:N	1:A:268:LEU:HD23	2.34	0.41
1:B:150:VAL:HG23	1:B:302:ASN:OD1	2.20	0.41
1:B:319:LYS:HE3	4:B:1125:HOH:O	2.21	0.41
1:A:372:LYS:CE	1:B:50:ASP:OD1	2.69	0.40
1:B:468:ARG:O	1:B:468:ARG:HD3	2.21	0.40
1:B:298:SER:HA	1:B:317:TRP:O	2.22	0.40

There are no symmetry-related clashes.

5.3 Torsion angles [i](#)

5.3.1 Protein backbone [i](#)

In the following table, the Percentiles column shows the percent Ramachandran outliers of the chain as a percentile score with respect to all X-ray entries followed by that with respect to entries of similar resolution.

The Analysed column shows the number of residues for which the backbone conformation was analysed, and the total number of residues.

Mol	Chain	Analysed	Favoured	Allowed	Outliers	Percentiles	
1	A	467/481 (97%)	451 (97%)	16 (3%)	0	100	100
1	B	463/481 (96%)	449 (97%)	14 (3%)	0	100	100
All	All	930/962 (97%)	900 (97%)	30 (3%)	0	100	100

There are no Ramachandran outliers to report.

5.3.2 Protein sidechains [i](#)

In the following table, the Percentiles column shows the percent sidechain outliers of the chain as a percentile score with respect to all X-ray entries followed by that with respect to entries of similar resolution.

The Analysed column shows the number of residues for which the sidechain conformation was analysed, and the total number of residues.

Mol	Chain	Analysed	Rotameric	Outliers	Percentiles	
1	A	408/413 (99%)	394 (97%)	14 (3%)	37	28
1	B	405/413 (98%)	393 (97%)	12 (3%)	41	33
All	All	813/826 (98%)	787 (97%)	26 (3%)	40	30

All (26) residues with a non-rotameric sidechain are listed below:

Mol	Chain	Res	Type
1	A	2	MET
1	A	93	ASP
1	A	141	GLN
1	A	162	ARG
1	A	168	GLU
1	A	172	SER
1	A	179	SER
1	A	256	LEU
1	A	282	LEU
1	A	321	LYS
1	A	357	PHE
1	A	440	ILE
1	A	468	ARG
1	A	474	ILE
1	B	31	THR
1	B	93	ASP
1	B	162	ARG
1	B	172	SER
1	B	207	LYS
1	B	215[A]	ASP
1	B	215[B]	ASP
1	B	357	PHE
1	B	440	ILE
1	B	442	ASP
1	B	468	ARG
1	B	476	SER

Sometimes sidechains can be flipped to improve hydrogen bonding and reduce clashes. There are no such sidechains identified.

5.3.3 RNA ⓘ

There are no RNA molecules in this entry.

5.4 Non-standard residues in protein, DNA, RNA chains [i](#)

2 non-standard protein/DNA/RNA residues are modelled in this entry.

In the following table, the Counts columns list the number of bonds (or angles) for which Mogul statistics could be retrieved, the number of bonds (or angles) that are observed in the model and the number of bonds (or angles) that are defined in the Chemical Component Dictionary. The Link column lists molecule types, if any, to which the group is linked. The Z score for a bond length (or angle) is the number of standard deviations the observed value is removed from the expected value. A bond length (or angle) with $|Z| > 2$ is considered an outlier worth inspection. RMSZ is the root-mean-square of all Z scores of the bond lengths (or angles).

Mol	Type	Chain	Res	Link	Bond lengths			Bond angles		
					Counts	RMSZ	$\# Z > 2$	Counts	RMSZ	$\# Z > 2$
1	CSX	A	255	1	3,6,7	0.72	0	1,6,8	1.61	0
1	CSX	B	255	1	3,6,7	0.69	0	1,6,8	1.93	0

In the following table, the Chirals column lists the number of chiral outliers, the number of chiral centers analysed, the number of these observed in the model and the number defined in the Chemical Component Dictionary. Similar counts are reported in the Torsion and Rings columns. '-' means no outliers of that kind were identified.

Mol	Type	Chain	Res	Link	Chirals	Torsions	Rings
1	CSX	A	255	1	-	0/1/5/7	-
1	CSX	B	255	1	-	0/1/5/7	-

There are no bond length outliers.

There are no bond angle outliers.

There are no chirality outliers.

There are no torsion outliers.

There are no ring outliers.

2 monomers are involved in 2 short contacts:

Mol	Chain	Res	Type	Clashes	Symm-Clashes
1	A	255	CSX	1	0
1	B	255	CSX	1	0

5.5 Carbohydrates [i](#)

There are no monosaccharides in this entry.

5.6 Ligand geometry

3 ligands are modelled in this entry.

In the following table, the Counts columns list the number of bonds (or angles) for which Mogul statistics could be retrieved, the number of bonds (or angles) that are observed in the model and the number of bonds (or angles) that are defined in the Chemical Component Dictionary. The Link column lists molecule types, if any, to which the group is linked. The Z score for a bond length (or angle) is the number of standard deviations the observed value is removed from the expected value. A bond length (or angle) with $|Z| > 2$ is considered an outlier worth inspection. RMSZ is the root-mean-square of all Z scores of the bond lengths (or angles).

Mol	Type	Chain	Res	Link	Bond lengths			Bond angles		
					Counts	RMSZ	$\# Z > 2$	Counts	RMSZ	$\# Z > 2$
2	PLP	A	501	1	15,15,16	1.19	2 (13%)	20,22,23	1.27	1 (5%)
3	SO4	A	502	-	4,4,4	0.22	0	6,6,6	0.18	0
2	PLP	B	1000	1	15,15,16	0.79	0	20,22,23	0.95	0

In the following table, the Chirals column lists the number of chiral outliers, the number of chiral centers analysed, the number of these observed in the model and the number defined in the Chemical Component Dictionary. Similar counts are reported in the Torsion and Rings columns. '-' means no outliers of that kind were identified.

Mol	Type	Chain	Res	Link	Chirals	Torsions	Rings
2	PLP	A	501	1	-	0/6/6/8	0/1/1/1
2	PLP	B	1000	1	-	0/6/6/8	0/1/1/1

All (2) bond length outliers are listed below:

Mol	Chain	Res	Type	Atoms	Z	Observed(Å)	Ideal(Å)
2	A	501	PLP	C4A-C4	-3.73	1.43	1.51
2	A	501	PLP	P-O3P	-2.05	1.46	1.54

All (1) bond angle outliers are listed below:

Mol	Chain	Res	Type	Atoms	Z	Observed(°)	Ideal(°)
2	A	501	PLP	O4P-P-O1P	-2.21	100.27	106.47

There are no chirality outliers.

There are no torsion outliers.

There are no ring outliers.

No monomer is involved in short contacts.

5.7 Other polymers

There are no such residues in this entry.

5.8 Polymer linkage issues

There are no chain breaks in this entry.

6 Fit of model and data ⓘ

6.1 Protein, DNA and RNA chains ⓘ

In the following table, the column labelled ‘#RSRZ > 2’ contains the number (and percentage) of RSRZ outliers, followed by percent RSRZ outliers for the chain as percentile scores relative to all X-ray entries and entries of similar resolution. The OWAB column contains the minimum, median, 95th percentile and maximum values of the occupancy-weighted average B-factor per residue. The column labelled ‘Q < 0.9’ lists the number of (and percentage) of residues with an average occupancy less than 0.9.

Mol	Chain	Analysed	<RSRZ>	#RSRZ>2	OWAB(Å ²)	Q<0.9
1	A	466/481 (96%)	-0.22	7 (1%) 73 76	14, 22, 42, 74	0
1	B	463/481 (96%)	0.09	18 (3%) 39 42	16, 32, 55, 83	0
All	All	929/962 (96%)	-0.06	25 (2%) 54 57	14, 26, 51, 83	0

All (25) RSRZ outliers are listed below:

Mol	Chain	Res	Type	RSRZ
1	A	332	PRO	4.1
1	B	394	ASN	3.8
1	B	442	ASP	3.7
1	B	138	PRO	3.3
1	B	474	ILE	3.3
1	B	470	ALA	3.2
1	A	342	VAL	3.2
1	B	441	GLN	3.2
1	B	475	LEU	2.9
1	B	416	PRO	2.8
1	A	175	ASP	2.7
1	B	473	LEU	2.7
1	B	398	PHE	2.7
1	B	476	SER	2.6
1	A	322	TYR	2.5
1	B	289	PHE	2.4
1	B	233	GLN	2.4
1	A	174	PRO	2.3
1	A	330	VAL	2.3
1	B	311	PHE	2.3
1	B	139	SER	2.2
1	B	171	THR	2.2
1	B	414	LYS	2.2
1	B	215[A]	ASP	2.1

Continued on next page...

Continued from previous page...

Mol	Chain	Res	Type	RSRZ
1	A	102	LEU	2.1

6.2 Non-standard residues in protein, DNA, RNA chains [i](#)

In the following table, the Atoms column lists the number of modelled atoms in the group and the number defined in the chemical component dictionary. The B-factors column lists the minimum, median, 95th percentile and maximum values of B factors of atoms in the group. The column labelled 'Q< 0.9' lists the number of atoms with occupancy less than 0.9.

Mol	Type	Chain	Res	Atoms	RSCC	RSR	B-factors(Å ²)	Q<0.9
1	CSX	B	255	7/8	0.94	0.12	42,45,50,51	0
1	CSX	A	255	7/8	0.96	0.08	22,24,29,33	0

6.3 Carbohydrates [i](#)

There are no monosaccharides in this entry.

6.4 Ligands [i](#)

In the following table, the Atoms column lists the number of modelled atoms in the group and the number defined in the chemical component dictionary. The B-factors column lists the minimum, median, 95th percentile and maximum values of B factors of atoms in the group. The column labelled 'Q< 0.9' lists the number of atoms with occupancy less than 0.9.

Mol	Type	Chain	Res	Atoms	RSCC	RSR	B-factors(Å ²)	Q<0.9
2	PLP	A	501	15/16	0.96	0.11	21,26,29,32	0
3	SO4	A	502	5/5	0.96	0.15	32,35,39,43	0
2	PLP	B	1000	15/16	0.98	0.12	28,33,36,36	0

6.5 Other polymers [i](#)

There are no such residues in this entry.