



Full wwPDB X-ray Structure Validation Report ⓘ

Nov 2, 2021 – 02:15 AM EDT

PDB ID : 2EJG
Title : Crystal Structure Of The Biotin Protein Ligase (Mutation R48A) and Biotin Carboxyl Carrier Protein Complex From *Pyrococcus Horikoshii* OT3
Authors : Bagautdinov, B.; Matsuura, Y.; Bagautdinova, S.; Kunishima, N.; RIKEN Structural Genomics/Proteomics Initiative (RSGI)
Deposited on : 2007-03-16
Resolution : 2.71 Å(reported)

This is a Full wwPDB X-ray Structure Validation Report for a publicly released PDB entry.

We welcome your comments at validation@mail.wwpdb.org

A user guide is available at

<https://www.wwpdb.org/validation/2017/XrayValidationReportHelp>

with specific help available everywhere you see the ⓘ symbol.

The following versions of software and data (see [references ⓘ](#)) were used in the production of this report:

MolProbity	:	4.02b-467
Mogul	:	1.8.5 (274361), CSD as541be (2020)
Xtriage (Phenix)	:	1.13
EDS	:	2.23.2
buster-report	:	1.1.7 (2018)
Percentile statistics	:	20191225.v01 (using entries in the PDB archive December 25th 2019)
Refmac	:	5.8.0158
CCP4	:	7.0.044 (Gargrove)
Ideal geometry (proteins)	:	Engh & Huber (2001)
Ideal geometry (DNA, RNA)	:	Parkinson et al. (1996)
Validation Pipeline (wwPDB-VP)	:	2.23.2

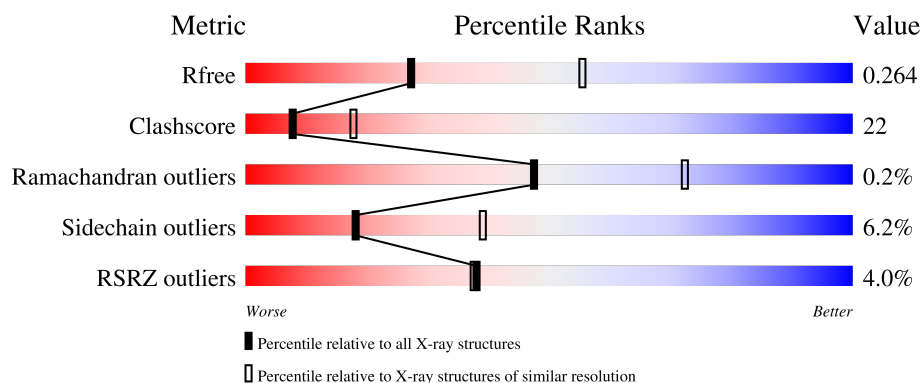
1 Overall quality at a glance

The following experimental techniques were used to determine the structure:

X-RAY DIFFRACTION

The reported resolution of this entry is 2.71 Å.

Percentile scores (ranging between 0-100) for global validation metrics of the entry are shown in the following graphic. The table shows the number of entries on which the scores are based.



Metric	Whole archive (#Entries)	Similar resolution (#Entries, resolution range(Å))
R_{free}	130704	3359 (2.74-2.70)
Clashscore	141614	3686 (2.74-2.70)
Ramachandran outliers	138981	3622 (2.74-2.70)
Sidechain outliers	138945	3623 (2.74-2.70)
RSRZ outliers	127900	3276 (2.74-2.70)

The table below summarises the geometric issues observed across the polymeric chains and their fit to the electron density. The red, orange, yellow and green segments of the lower bar indicate the fraction of residues that contain outliers for ≥ 3 , 2, 1 and 0 types of geometric quality criteria respectively. A grey segment represents the fraction of residues that are not modelled. The numeric value for each fraction is indicated below the corresponding segment, with a dot representing fractions $\leq 5\%$. The upper red bar (where present) indicates the fraction of residues that have poor fit to the electron density. The numeric value is given above the bar.

Mol	Chain	Length	Quality of chain
1	A	235	<div> <div>71%</div> <div>25%</div> <div>..</div> </div>
1	B	235	<div> <div>7%</div> <div>56%</div> <div>36%</div> <div>5%</div> </div>
2	C	74	<div> <div>3%</div> <div>43%</div> <div>46%</div> <div>7%</div> </div>
2	D	74	<div> <div>4%</div> <div>57%</div> <div>30%</div> <div>7%</div> <div>7%</div> </div>

2 Entry composition

There are 5 unique types of molecules in this entry. The entry contains 4891 atoms, of which 0 are hydrogens and 0 are deuteriums.

In the tables below, the ZeroOcc column contains the number of atoms modelled with zero occupancy, the AltConf column contains the number of residues with at least one atom in alternate conformation and the Trace column contains the number of residues modelled with at most 2 atoms.

- Molecule 1 is a protein called 235aa long hypothetical biotin--[acetyl-CoA-carboxylase] ligase.

Mol	Chain	Residues	Atoms					ZeroOcc	AltConf	Trace
1	A	232	Total	C	N	O	S	0	0	0
			1813	1173	305	330	5			
1	B	223	Total	C	N	O	S	0	0	0
			1744	1129	293	317	5			

There are 2 discrepancies between the modelled and reference sequences:

Chain	Residue	Modelled	Actual	Comment	Reference
A	48	ALA	ARG	engineered mutation	UNP O57883
B	48	ALA	ARG	engineered mutation	UNP O57883

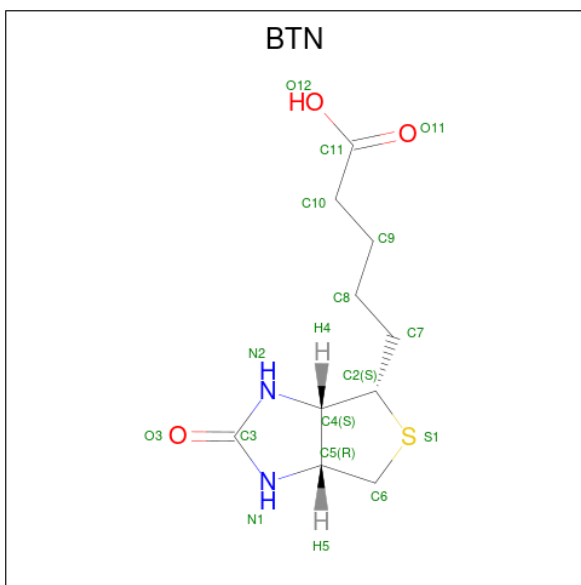
- Molecule 2 is a protein called 149aa long hypothetical methylmalonyl-CoA decarboxylase gamma chain.

Mol	Chain	Residues	Atoms					ZeroOcc	AltConf	Trace
2	C	69	Total	C	N	O	S	0	0	0
			519	326	95	95	3			
2	D	69	Total	C	N	O	S	0	0	0
			519	326	95	95	3			

There are 2 discrepancies between the modelled and reference sequences:

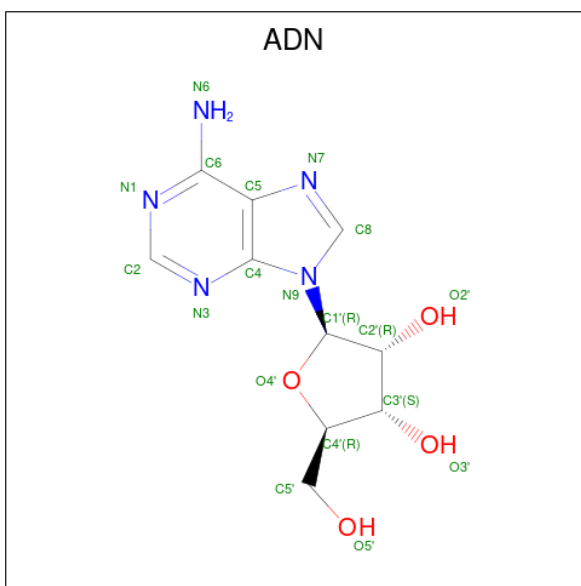
Chain	Residue	Modelled	Actual	Comment	Reference
C	76	MET	-	initiating methionine	UNP O59021
D	76	MET	-	initiating methionine	UNP O59021

- Molecule 3 is BIOTIN (three-letter code: BTN) (formula: C₁₀H₁₆N₂O₃S).



Mol	Chain	Residues	Atoms					ZeroOcc	AltConf
3	A	1	Total	C	N	O	S	0	0
			16	10	2	3	1		
3	B	1	Total	C	N	O	S	0	0
			16	10	2	3	1		

- Molecule 4 is ADENOSINE (three-letter code: ADN) (formula: $C_{10}H_{13}N_5O_4$).



Mol	Chain	Residues	Atoms				ZeroOcc	AltConf
4	A	1	Total	C	N	O	0	0
			19	10	5	4		
4	B	1	Total	C	N	O	0	0
			19	10	5	4		

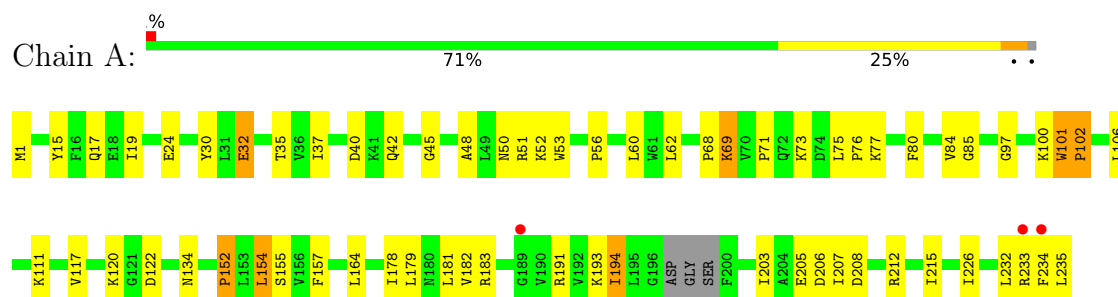
- Molecule 5 is water.

Mol	Chain	Residues	Atoms		ZeroOcc	AltConf
5	A	74	Total 74	O 74	0	0
5	B	93	Total 93	O 93	0	0
5	C	26	Total 26	O 26	0	0
5	D	33	Total 33	O 33	0	0

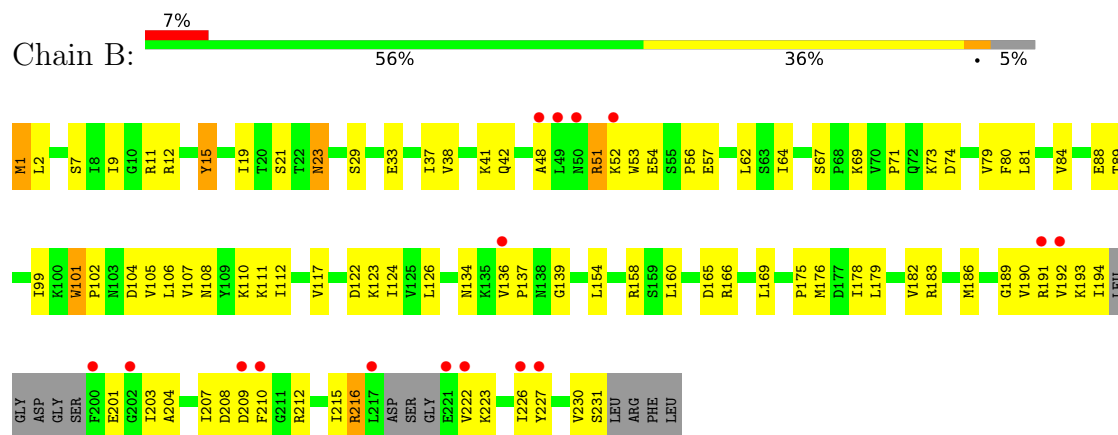
3 Residue-property plots

These plots are drawn for all protein, RNA, DNA and oligosaccharide chains in the entry. The first graphic for a chain summarises the proportions of the various outlier classes displayed in the second graphic. The second graphic shows the sequence view annotated by issues in geometry and electron density. Residues are color-coded according to the number of geometric quality criteria for which they contain at least one outlier: green = 0, yellow = 1, orange = 2 and red = 3 or more. A red dot above a residue indicates a poor fit to the electron density ($RSRZ > 2$). Stretches of 2 or more consecutive residues without any outlier are shown as a green connector. Residues present in the sample, but not in the model, are shown in grey.

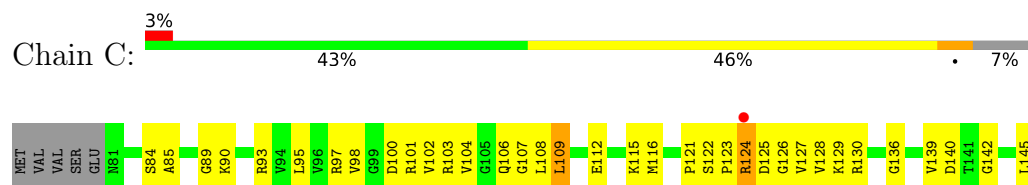
- Molecule 1: 235aa long hypothetical biotin--[acetyl-CoA-carboxylase] ligase



- Molecule 1: 235aa long hypothetical biotin--[acetyl-CoA-carboxylase] ligase



- Molecule 2: 149aa long hypothetical methylmalonyl-CoA decarboxylase gamma chain



- Molecule 2: 149aa long hypothetical methylmalonyl-CoA decarboxylase gamma chain





4 Data and refinement statistics

Property	Value	Source
Space group	P 1 21 1	Depositor
Cell constants a, b, c, α , β , γ	69.57Å 63.49Å 74.72Å 90.00° 93.65° 90.00°	Depositor
Resolution (Å)	38.93 – 2.71 49.27 – 2.71	Depositor EDS
% Data completeness (in resolution range)	91.0 (38.93-2.71) 91.2 (49.27-2.71)	Depositor EDS
R_{merge}	0.11	Depositor
R_{sym}	0.09	Depositor
$\langle I/\sigma(I) \rangle$ ¹	2.14 (at 2.73Å)	Xtriage
Refinement program	CNS 1.1	Depositor
R, R_{free}	0.216 , 0.273 0.209 , 0.264	Depositor DCC
R_{free} test set	836 reflections (5.11%)	wwPDB-VP
Wilson B-factor (Å ²)	40.5	Xtriage
Anisotropy	0.233	Xtriage
Bulk solvent k_{sol} (e/Å ³), B_{sol} (Å ²)	0.35 , 78.3	EDS
L-test for twinning ²	$\langle L \rangle = 0.48$, $\langle L^2 \rangle = 0.31$	Xtriage
Estimated twinning fraction	No twinning to report.	Xtriage
F_o, F_c correlation	0.93	EDS
Total number of atoms	4891	wwPDB-VP
Average B, all atoms (Å ²)	42.0	wwPDB-VP

Xtriage's analysis on translational NCS is as follows: *The largest off-origin peak in the Patterson function is 12.24% of the height of the origin peak. No significant pseudotranslation is detected.*

¹Intensities estimated from amplitudes.

²Theoretical values of $\langle |L| \rangle$, $\langle L^2 \rangle$ for acentric reflections are 0.5, 0.333 respectively for untwinned datasets, and 0.375, 0.2 for perfectly twinned datasets.

5 Model quality [i](#)

5.1 Standard geometry [i](#)

Bond lengths and bond angles in the following residue types are not validated in this section: ADN, BTN

The Z score for a bond length (or angle) is the number of standard deviations the observed value is removed from the expected value. A bond length (or angle) with $|Z| > 5$ is considered an outlier worth inspection. RMSZ is the root-mean-square of all Z scores of the bond lengths (or angles).

Mol	Chain	Bond lengths		Bond angles	
		RMSZ	$\# Z > 5$	RMSZ	$\# Z > 5$
1	A	0.51	1/1840 (0.1%)	0.72	0/2481
1	B	0.49	1/1769 (0.1%)	0.69	0/2386
2	C	0.48	0/523	0.84	0/704
2	D	0.42	0/523	0.69	0/704
All	All	0.49	2/4655 (0.0%)	0.72	0/6275

All (2) bond length outliers are listed below:

Mol	Chain	Res	Type	Atoms	Z	Observed(Å)	Ideal(Å)
1	B	101	TRP	NE1-CE2	8.96	1.49	1.37
1	A	101	TRP	NE1-CE2	8.81	1.49	1.37

There are no bond angle outliers.

There are no chirality outliers.

There are no planarity outliers.

5.2 Too-close contacts [i](#)

In the following table, the Non-H and H(model) columns list the number of non-hydrogen atoms and hydrogen atoms in the chain respectively. The H(added) column lists the number of hydrogen atoms added and optimized by MolProbity. The Clashes column lists the number of clashes within the asymmetric unit, whereas Symm-Clashes lists symmetry-related clashes.

Mol	Chain	Non-H	H(model)	H(added)	Clashes	Symm-Clashes
1	A	1813	0	1913	66	0
1	B	1744	0	1842	95	0
2	C	519	0	561	32	0
2	D	519	0	561	32	0
3	A	16	0	15	0	0

Continued on next page...

Continued from previous page...

Mol	Chain	Non-H	H(model)	H(added)	Clashes	Symm-Clashes
3	B	16	0	15	0	0
4	A	19	0	13	1	0
4	B	19	0	13	4	0
5	A	74	0	0	2	0
5	B	93	0	0	3	0
5	C	26	0	0	1	0
5	D	33	0	0	0	0
All	All	4891	0	4933	209	0

The all-atom clashscore is defined as the number of clashes found per 1000 atoms (including hydrogen atoms). The all-atom clashscore for this structure is 22.

All (209) close contacts within the same asymmetric unit are listed below, sorted by their clash magnitude.

Atom-1	Atom-2	Interatomic distance (Å)	Clash overlap (Å)
2:C:130:ARG:HB2	2:C:147:GLU:HG2	1.23	1.10
1:B:210:PHE:HE2	1:B:226:ILE:HD11	1.21	1.04
2:D:104:VAL:HG23	2:D:124:ARG:HA	1.39	1.04
1:B:210:PHE:CE2	1:B:226:ILE:HD11	1.94	1.03
1:A:193:LYS:HD3	1:A:235:LEU:HD11	1.49	0.94
1:A:193:LYS:HD3	1:A:235:LEU:CD1	2.04	0.87
1:B:48:ALA:CB	2:D:115:LYS:HD3	2.05	0.87
1:A:56:PRO:HG2	1:A:134:ASN:HB2	1.58	0.85
2:C:108:LEU:HD11	2:C:122:SER:HB2	1.58	0.85
2:D:104:VAL:HG23	2:D:124:ARG:CA	2.07	0.84
1:A:154:LEU:HD22	1:B:1:MET:HE1	1.64	0.80
1:B:203:ILE:HG22	1:B:216:ARG:HB3	1.64	0.79
1:A:193:LYS:CD	1:A:235:LEU:HD11	2.15	0.77
1:B:203:ILE:HG22	1:B:216:ARG:CB	2.14	0.77
1:B:203:ILE:CG2	1:B:216:ARG:HB3	2.16	0.76
1:A:24:GLU:HG3	5:A:1542:HOH:O	1.86	0.74
1:B:179:LEU:O	1:B:183:ARG:HG3	1.88	0.74
2:D:91:VAL:HB	2:D:135:GLU:HA	1.71	0.73
1:B:226:ILE:HG22	1:B:227:TYR:CD2	2.25	0.71
1:B:51:ARG:NH1	5:B:1575:HOH:O	2.21	0.71
1:B:48:ALA:HB1	2:D:115:LYS:HD3	1.73	0.70
1:A:154:LEU:HD22	1:B:1:MET:CE	2.22	0.69
2:C:123:PRO:O	2:C:124:ARG:HG3	1.92	0.69
1:B:208:ASP:OD2	1:B:212:ARG:HB2	1.94	0.68
1:B:204:ALA:HA	1:B:215:ILE:HD13	1.75	0.68
1:B:80:PHE:HB3	1:B:182:VAL:HG21	1.76	0.68

Continued on next page...

Continued from previous page...

Atom-1	Atom-2	Interatomic distance (Å)	Clash overlap (Å)
1:B:227:TYR:CD2	2:D:90:LYS:HB3	2.30	0.67
1:B:226:ILE:CG2	1:B:227:TYR:CD2	2.78	0.67
1:A:193:LYS:HE2	1:A:233:ARG:HB3	1.77	0.66
2:D:108:LEU:HD21	2:D:122:SER:HB2	1.79	0.65
1:B:154:LEU:HD21	1:B:158:ARG:HE	1.63	0.64
1:A:232:LEU:HD23	1:A:233:ARG:N	2.13	0.64
1:B:193:LYS:O	1:B:230:VAL:HA	1.98	0.64
2:C:109:LEU:HD21	2:C:145:LEU:HD23	1.79	0.63
1:B:110:LYS:HG2	1:B:139:GLY:O	1.98	0.62
1:A:193:LYS:HE2	1:A:233:ARG:CD	2.29	0.62
1:B:80:PHE:HB3	1:B:182:VAL:CG2	2.29	0.62
1:B:212:ARG:NH2	5:B:1594:HOH:O	2.27	0.61
1:A:52:LYS:HG2	1:A:53:TRP:N	2.15	0.61
1:A:32:GLU:HG3	1:A:35:THR:OG1	2.00	0.61
2:D:109:LEU:HD21	2:D:145:LEU:HD13	1.81	0.61
2:C:100:ASP:O	2:C:128:VAL:HG23	2.00	0.61
2:C:102:VAL:N	2:C:126:GLY:O	2.34	0.60
2:D:108:LEU:HD11	2:D:122:SER:HA	1.83	0.60
1:B:203:ILE:CG2	1:B:216:ARG:CB	2.78	0.59
1:A:97:GLY:HA2	1:A:106:LEU:O	2.03	0.59
1:B:48:ALA:HB2	2:D:115:LYS:HD3	1.82	0.59
1:A:154:LEU:CD2	1:B:1:MET:HE1	2.32	0.59
1:B:227:TYR:CE2	2:D:90:LYS:HB3	2.38	0.59
1:B:53:TRP:HZ3	1:B:111:LYS:NZ	2.00	0.58
1:A:208:ASP:OD2	1:A:212:ARG:HB2	2.04	0.58
1:B:193:LYS:O	1:B:194:ILE:HD13	2.04	0.57
1:B:101:TRP:CZ2	2:D:114:MET:HG3	2.40	0.57
1:B:2:LEU:HD22	1:B:154:LEU:HD11	1.86	0.57
2:D:90:LYS:O	2:D:90:LYS:HG3	2.04	0.57
1:B:192:VAL:HB	1:B:230:VAL:CG1	2.34	0.57
2:C:103:ARG:HA	2:C:125:ASP:OD1	2.05	0.56
2:C:84:SER:HB2	2:C:142:GLY:C	2.26	0.56
1:A:178:ILE:HG23	1:A:179:LEU:N	2.21	0.56
1:B:51:ARG:HH21	4:B:1502:ADN:H1'	1.71	0.56
1:A:50:ASN:OD1	2:C:93:ARG:NH1	2.39	0.55
2:C:84:SER:HB2	2:C:142:GLY:O	2.06	0.55
2:D:97:ARG:O	2:D:100:ASP:HB2	2.06	0.55
1:B:15:TYR:HA	1:B:38:VAL:O	2.06	0.55
1:B:51:ARG:HH21	4:B:1502:ADN:C1'	2.20	0.55
1:B:216:ARG:CZ	1:B:222:VAL:HG22	2.37	0.55
1:A:193:LYS:HE2	1:A:233:ARG:CG	2.36	0.55

Continued on next page...

Continued from previous page...

Atom-1	Atom-2	Interatomic distance (Å)	Clash overlap (Å)
1:A:45:GLY:HA3	5:A:1506:HOH:O	2.07	0.55
2:C:101:ARG:NH2	2:C:125:ASP:OD2	2.34	0.55
2:C:104:VAL:N	2:C:125:ASP:OD1	2.38	0.55
1:B:19:ILE:O	1:B:42:GLN:HA	2.07	0.54
1:A:51:ARG:HD3	4:A:1501:ADN:H5'1	1.90	0.54
1:B:64:ILE:HD12	1:B:126:LEU:HD23	1.89	0.54
2:D:109:LEU:HD12	2:D:110:VAL:N	2.23	0.54
1:B:48:ALA:CB	2:D:115:LYS:CD	2.82	0.54
1:B:207:ILE:HA	1:B:212:ARG:O	2.08	0.54
1:A:75:LEU:N	1:A:76:PRO:CD	2.71	0.53
1:A:205:GLU:O	1:A:206:ASP:HB2	2.08	0.53
1:A:106:LEU:HD23	1:A:111:LYS:HA	1.90	0.53
2:D:82:VAL:HG13	2:D:146:ILE:O	2.09	0.53
1:A:193:LYS:HE2	1:A:233:ARG:HD3	1.89	0.53
2:D:91:VAL:CB	2:D:135:GLU:HA	2.38	0.53
1:B:56:PRO:HG2	1:B:134:ASN:HB2	1.89	0.53
1:B:216:ARG:NE	1:B:222:VAL:HG22	2.23	0.53
1:B:51:ARG:NH2	4:B:1502:ADN:H1'	2.23	0.52
1:B:210:PHE:CE1	2:D:88:PRO:HD2	2.44	0.52
2:C:147:GLU:O	2:C:147:GLU:HG3	2.09	0.52
1:B:190:VAL:HG22	1:B:191:ARG:N	2.24	0.52
1:B:230:VAL:HG12	1:B:231:SER:N	2.24	0.52
1:A:226:ILE:HD12	1:A:226:ILE:N	2.24	0.52
1:B:154:LEU:CD2	1:B:158:ARG:HE	2.21	0.52
2:D:82:VAL:HG22	2:D:147:GLU:HA	1.91	0.52
1:B:203:ILE:HG23	5:B:1590:HOH:O	2.10	0.52
2:C:104:VAL:HG22	2:C:124:ARG:HA	1.92	0.52
1:B:210:PHE:CZ	2:D:88:PRO:HD2	2.44	0.52
2:D:106:GLN:O	2:D:122:SER:N	2.41	0.52
2:C:129:LYS:O	2:C:130:ARG:HG2	2.10	0.51
2:C:90:LYS:HE3	2:C:136:GLY:O	2.10	0.51
1:B:53:TRP:HZ3	1:B:111:LYS:HZ3	1.59	0.51
1:A:191:ARG:NH1	1:A:191:ARG:HG3	2.26	0.51
2:D:91:VAL:CG1	2:D:135:GLU:HA	2.41	0.51
1:A:19:ILE:O	1:A:42:GLN:HA	2.11	0.50
2:C:101:ARG:HA	2:C:126:GLY:O	2.12	0.50
1:A:85:GLY:HA3	1:A:164:LEU:CD2	2.42	0.50
1:B:99:ILE:HB	1:B:186:MET:HA	1.93	0.50
1:B:179:LEU:HD11	1:B:209:ASP:O	2.11	0.50
1:A:193:LYS:HE2	1:A:233:ARG:CB	2.40	0.49
1:B:192:VAL:HB	1:B:230:VAL:HG13	1.94	0.49

Continued on next page...

Continued from previous page...

Atom-1	Atom-2	Interatomic distance (Å)	Clash overlap (Å)
1:B:194:ILE:CD1	1:B:230:VAL:HG22	2.43	0.49
1:A:193:LYS:CG	1:A:235:LEU:HD11	2.43	0.49
2:D:106:GLN:O	2:D:121:PRO:HA	2.13	0.49
1:B:71:PRO:O	1:B:74:ASP:HB2	2.13	0.48
1:B:166:ARG:NH1	1:B:169:LEU:HD12	2.28	0.48
2:C:95:LEU:HD12	2:C:107:GLY:C	2.34	0.48
2:D:104:VAL:CG2	2:D:124:ARG:HA	2.28	0.48
1:B:101:TRP:HA	1:B:102:PRO:HA	1.59	0.48
1:A:193:LYS:CE	1:A:233:ARG:HD3	2.43	0.48
2:D:130:ARG:HB2	2:D:147:GLU:HB3	1.96	0.48
1:B:190:VAL:HG22	1:B:191:ARG:H	1.79	0.48
1:A:75:LEU:N	1:A:76:PRO:HD3	2.28	0.47
1:A:193:LYS:HB3	1:A:235:LEU:HD11	1.96	0.47
2:C:103:ARG:HB3	2:C:106:GLN:HB2	1.96	0.47
1:B:15:TYR:CD1	1:B:15:TYR:C	2.88	0.47
1:A:120:LYS:O	1:A:120:LYS:HG3	2.14	0.47
1:A:178:ILE:O	1:A:182:VAL:HG23	2.14	0.47
1:A:191:ARG:HG3	1:A:191:ARG:HH11	1.79	0.47
1:B:79:VAL:HG22	1:B:117:VAL:CG2	2.45	0.47
1:B:106:LEU:HD12	1:B:106:LEU:N	2.30	0.47
2:C:106:GLN:HG2	2:C:107:GLY:N	2.30	0.47
1:B:166:ARG:HH11	1:B:169:LEU:HD12	1.80	0.47
1:A:183:ARG:HD3	1:A:206:ASP:OD1	2.15	0.46
1:B:136:VAL:HB	1:B:137:PRO:CD	2.45	0.46
1:A:17:GLN:O	1:A:40:ASP:HB2	2.15	0.46
1:A:193:LYS:NZ	1:A:233:ARG:HD3	2.30	0.46
1:B:212:ARG:HD3	1:B:226:ILE:HD12	1.96	0.46
1:B:189:GLY:N	1:B:204:ALA:O	2.48	0.46
1:B:203:ILE:CG2	1:B:203:ILE:O	2.63	0.46
1:A:60:LEU:HD11	1:A:157:PHE:HD1	1.80	0.46
1:B:104:ASP:OD1	1:B:111:LYS:HE3	2.16	0.46
1:B:175:PRO:O	1:B:178:ILE:HG22	2.15	0.46
1:A:193:LYS:HD3	1:A:235:LEU:HD12	1.95	0.45
1:B:123:LYS:C	1:B:124:ILE:HD12	2.37	0.45
1:B:203:ILE:HG22	1:B:216:ARG:CA	2.46	0.45
1:A:37:ILE:O	1:A:62:LEU:HA	2.17	0.45
1:B:9:ILE:HD12	1:B:165:ASP:HA	1.99	0.45
2:C:90:LYS:NZ	5:C:166:HOH:O	2.49	0.45
2:D:103:ARG:HA	2:D:125:ASP:OD1	2.16	0.45
1:A:194:ILE:HD11	1:A:232:LEU:HD12	1.99	0.45
1:A:207:ILE:HA	1:A:212:ARG:O	2.18	0.45

Continued on next page...

Continued from previous page...

Atom-1	Atom-2	Interatomic distance (Å)	Clash overlap (Å)
2:D:104:VAL:HG23	2:D:124:ARG:N	2.32	0.45
1:A:85:GLY:HA3	1:A:164:LEU:HD21	1.98	0.44
2:D:146:ILE:HG22	2:D:147:GLU:N	2.31	0.44
2:C:101:ARG:NH1	2:C:102:VAL:O	2.50	0.44
1:B:29:SER:O	1:B:123:LYS:NZ	2.50	0.44
1:B:194:ILE:HD12	1:B:230:VAL:HG22	1.98	0.44
1:B:203:ILE:HG22	1:B:216:ARG:O	2.16	0.44
2:C:106:GLN:O	2:C:108:LEU:HD13	2.17	0.44
2:C:98:VAL:HA	2:C:128:VAL:HB	1.99	0.44
1:A:203:ILE:O	1:A:215:ILE:HA	2.18	0.44
1:A:154:LEU:HD13	1:A:154:LEU:O	2.18	0.44
1:B:7:SER:O	1:B:11:ARG:HD3	2.18	0.43
1:B:107:VAL:O	1:B:108:ASN:HB2	2.17	0.43
2:D:122:SER:HA	2:D:123:PRO:HD3	1.87	0.43
1:A:30:TYR:CD1	1:A:30:TYR:C	2.91	0.43
2:C:97:ARG:O	2:C:100:ASP:HB2	2.19	0.43
1:A:77:LYS:HA	1:A:80:PHE:CD2	2.53	0.43
1:B:38:VAL:HG23	1:B:62:LEU:HB3	2.00	0.43
2:C:85:ALA:HB3	2:C:140:ASP:O	2.18	0.43
1:A:84:VAL:HG11	1:A:181:LEU:HD13	2.01	0.43
1:B:203:ILE:HG21	1:B:216:ARG:HB3	1.96	0.43
1:A:232:LEU:HD23	1:A:232:LEU:C	2.39	0.43
1:A:106:LEU:CD2	1:A:111:LYS:HA	2.49	0.42
1:A:15:TYR:OH	1:A:40:ASP:OD2	2.26	0.42
2:C:106:GLN:O	2:C:121:PRO:HA	2.19	0.42
1:B:80:PHE:CG	1:B:182:VAL:HG21	2.54	0.42
1:A:50:ASN:OD1	2:C:93:ARG:HD3	2.18	0.42
1:A:101:TRP:HA	1:A:102:PRO:HA	1.61	0.42
1:B:51:ARG:NH2	4:B:1502:ADN:C1'	2.82	0.42
1:B:84:VAL:O	1:B:88:GLU:HB2	2.19	0.42
1:B:203:ILE:HG23	1:B:203:ILE:O	2.20	0.42
1:A:68:PRO:O	1:A:69:LYS:HB2	2.20	0.42
1:A:178:ILE:CG2	1:A:179:LEU:N	2.83	0.42
1:B:105:VAL:C	1:B:106:LEU:HD12	2.39	0.42
2:D:130:ARG:O	2:D:146:ILE:HG23	2.20	0.42
1:B:52:LYS:HD3	1:B:54:GLU:OE2	2.20	0.41
1:B:193:LYS:HA	1:B:201:GLU:HA	2.02	0.41
1:A:117:VAL:CG1	2:C:116:MET:HG2	2.50	0.41
1:B:105:VAL:O	1:B:112:ILE:HG22	2.20	0.41
1:B:154:LEU:O	1:B:154:LEU:HG	2.20	0.41
2:D:112:GLU:HA	2:D:116:MET:O	2.20	0.41

Continued on next page...

Continued from previous page...

Atom-1	Atom-2	Interatomic distance (Å)	Clash overlap (Å)
1:A:15:TYR:CD2	1:B:2:LEU:HD12	2.55	0.41
1:B:80:PHE:CB	1:B:182:VAL:HG21	2.48	0.41
1:B:166:ARG:HA	1:B:166:ARG:HD3	1.88	0.41
1:B:208:ASP:OD2	1:B:212:ARG:NE	2.54	0.41
2:C:129:LYS:HB3	2:C:147:GLU:HG3	2.02	0.41
1:A:15:TYR:HE1	1:A:40:ASP:OD1	2.04	0.41
1:A:152:PRO:HG2	1:A:155:SER:HB2	2.02	0.41
1:B:21:SER:C	1:B:23:ASN:N	2.73	0.41
1:B:101:TRP:HD1	1:B:186:MET:CE	2.33	0.41
1:A:48:ALA:O	1:A:51:ARG:HD2	2.20	0.41
1:A:100:LYS:HG3	1:A:234:PHE:HZ	1.85	0.41
2:C:89:GLY:O	2:C:139:VAL:HG22	2.21	0.41
1:B:89:THR:OG1	1:B:160:LEU:HA	2.21	0.41
1:A:80:PHE:HB3	1:A:182:VAL:HG21	2.03	0.40
1:B:67:SER:O	1:B:69:LYS:HD2	2.21	0.40
1:A:71:PRO:HB2	1:A:73:LYS:HG2	2.03	0.40
1:A:181:LEU:HD23	1:A:181:LEU:HA	1.86	0.40
2:C:127:VAL:O	2:C:148:LEU:HA	2.21	0.40
1:B:37:ILE:O	1:B:62:LEU:HA	2.22	0.40

There are no symmetry-related clashes.

5.3 Torsion angles [i](#)

5.3.1 Protein backbone [i](#)

In the following table, the Percentiles column shows the percent Ramachandran outliers of the chain as a percentile score with respect to all X-ray entries followed by that with respect to entries of similar resolution.

The Analysed column shows the number of residues for which the backbone conformation was analysed, and the total number of residues.

Mol	Chain	Analysed	Favoured	Allowed	Outliers	Percentiles	
1	A	228/235 (97%)	214 (94%)	13 (6%)	1 (0%)	34	58
1	B	217/235 (92%)	197 (91%)	20 (9%)	0	100	100
2	C	67/74 (90%)	66 (98%)	1 (2%)	0	100	100
2	D	67/74 (90%)	62 (92%)	5 (8%)	0	100	100
All	All	579/618 (94%)	539 (93%)	39 (7%)	1 (0%)	47	72

All (1) Ramachandran outliers are listed below:

Mol	Chain	Res	Type
1	A	152	PRO

5.3.2 Protein sidechains ⓘ

In the following table, the Percentiles column shows the percent sidechain outliers of the chain as a percentile score with respect to all X-ray entries followed by that with respect to entries of similar resolution.

The Analysed column shows the number of residues for which the sidechain conformation was analysed, and the total number of residues.

Mol	Chain	Analysed	Rotameric	Outliers	Percentiles	
1	A	202/204 (99%)	195 (96%)	7 (4%)	36	63
1	B	195/204 (96%)	181 (93%)	14 (7%)	14	32
2	C	58/63 (92%)	53 (91%)	5 (9%)	10	23
2	D	58/63 (92%)	52 (90%)	6 (10%)	7	16
All	All	513/534 (96%)	481 (94%)	32 (6%)	18	39

All (32) residues with a non-rotameric sidechain are listed below:

Mol	Chain	Res	Type
1	A	1	MET
1	A	32	GLU
1	A	69	LYS
1	A	102	PRO
1	A	122	ASP
1	A	154	LEU
1	A	194	ILE
1	B	1	MET
1	B	12	ARG
1	B	15	TYR
1	B	23	ASN
1	B	33	GLU
1	B	41	LYS
1	B	51	ARG
1	B	57	GLU
1	B	73	LYS
1	B	81	LEU
1	B	122	ASP
1	B	176	MET

Continued on next page...

Continued from previous page...

Mol	Chain	Res	Type
1	B	216	ARG
1	B	223	LYS
2	C	109	LEU
2	C	112	GLU
2	C	115	LYS
2	C	124	ARG
2	C	147	GLU
2	D	104	VAL
2	D	109	LEU
2	D	116	MET
2	D	124	ARG
2	D	125	ASP
2	D	140	ASP

Sometimes sidechains can be flipped to improve hydrogen bonding and reduce clashes. All (2) such sidechains are listed below:

Mol	Chain	Res	Type
1	A	17	GLN
1	B	163	ASN

5.3.3 RNA [i](#)

There are no RNA molecules in this entry.

5.4 Non-standard residues in protein, DNA, RNA chains [i](#)

There are no non-standard protein/DNA/RNA residues in this entry.

5.5 Carbohydrates [i](#)

There are no monosaccharides in this entry.

5.6 Ligand geometry [i](#)

4 ligands are modelled in this entry.

In the following table, the Counts columns list the number of bonds (or angles) for which Mogul statistics could be retrieved, the number of bonds (or angles) that are observed in the model and the number of bonds (or angles) that are defined in the Chemical Component Dictionary. The

Link column lists molecule types, if any, to which the group is linked. The Z score for a bond length (or angle) is the number of standard deviations the observed value is removed from the expected value. A bond length (or angle) with $|Z| > 2$ is considered an outlier worth inspection. RMSZ is the root-mean-square of all Z scores of the bond lengths (or angles).

Mol	Type	Chain	Res	Link	Bond lengths			Bond angles		
					Counts	RMSZ	# Z > 2	Counts	RMSZ	# Z > 2
4	ADN	B	1502	-	18,21,21	1.99	3 (16%)	18,31,31	1.74	3 (16%)
3	BTN	A	1401	-	14,17,17	1.15	1 (7%)	19,23,23	2.23	5 (26%)
3	BTN	B	1402	-	14,17,17	1.09	1 (7%)	19,23,23	2.16	5 (26%)
4	ADN	A	1501	-	18,21,21	1.86	3 (16%)	18,31,31	1.71	3 (16%)

In the following table, the Chirals column lists the number of chiral outliers, the number of chiral centers analysed, the number of these observed in the model and the number defined in the Chemical Component Dictionary. Similar counts are reported in the Torsion and Rings columns. '-' means no outliers of that kind were identified.

Mol	Type	Chain	Res	Link	Chirals	Torsions	Rings
4	ADN	B	1502	-	-	0/2/22/22	0/3/3/3
3	BTN	A	1401	-	-	0/5/28/28	0/2/2/2
3	BTN	B	1402	-	-	0/5/28/28	0/2/2/2
4	ADN	A	1501	-	-	0/2/22/22	0/3/3/3

All (8) bond length outliers are listed below:

Mol	Chain	Res	Type	Atoms	Z	Observed(Å)	Ideal(Å)
4	B	1502	ADN	C8-N7	5.63	1.44	1.34
4	A	1501	ADN	C8-N7	5.53	1.44	1.34
4	B	1502	ADN	O4'-C1'	3.92	1.46	1.41
4	A	1501	ADN	O4'-C1'	3.44	1.45	1.41
3	A	1401	BTN	C3-N2	2.62	1.39	1.35
3	B	1402	BTN	C2-C4	2.28	1.58	1.53
4	B	1502	ADN	C4-N3	2.17	1.38	1.35
4	A	1501	ADN	C4-N3	2.14	1.38	1.35

All (16) bond angle outliers are listed below:

Mol	Chain	Res	Type	Atoms	Z	Observed(°)	Ideal(°)
3	A	1401	BTN	C5-C6-S1	-6.03	101.14	106.31
3	B	1402	BTN	C5-C6-S1	-5.83	101.31	106.31
4	B	1502	ADN	N3-C2-N1	-5.17	120.59	128.68
4	A	1501	ADN	N3-C2-N1	-5.02	120.83	128.68
3	A	1401	BTN	C2-C4-N2	4.16	116.85	113.13

Continued on next page...

Continued from previous page...

Mol	Chain	Res	Type	Atoms	Z	Observed(°)	Ideal(°)
3	B	1402	BTN	C2-C4-C5	-3.96	104.34	108.94
3	A	1401	BTN	C2-C4-C5	-3.61	104.75	108.94
3	B	1402	BTN	C2-C4-N2	3.43	116.20	113.13
4	B	1502	ADN	C3'-C2'-C1'	3.07	105.61	100.98
4	A	1501	ADN	C3'-C2'-C1'	2.94	105.41	100.98
3	A	1401	BTN	C6-C5-C4	2.72	111.02	108.66
3	B	1402	BTN	C4-C5-N1	2.50	105.09	102.43
3	A	1401	BTN	C4-C5-N1	2.40	104.98	102.43
3	B	1402	BTN	C6-C5-C4	2.26	110.62	108.66
4	A	1501	ADN	C2-N1-C6	2.04	122.25	118.75
4	B	1502	ADN	C2-N1-C6	2.03	122.23	118.75

There are no chirality outliers.

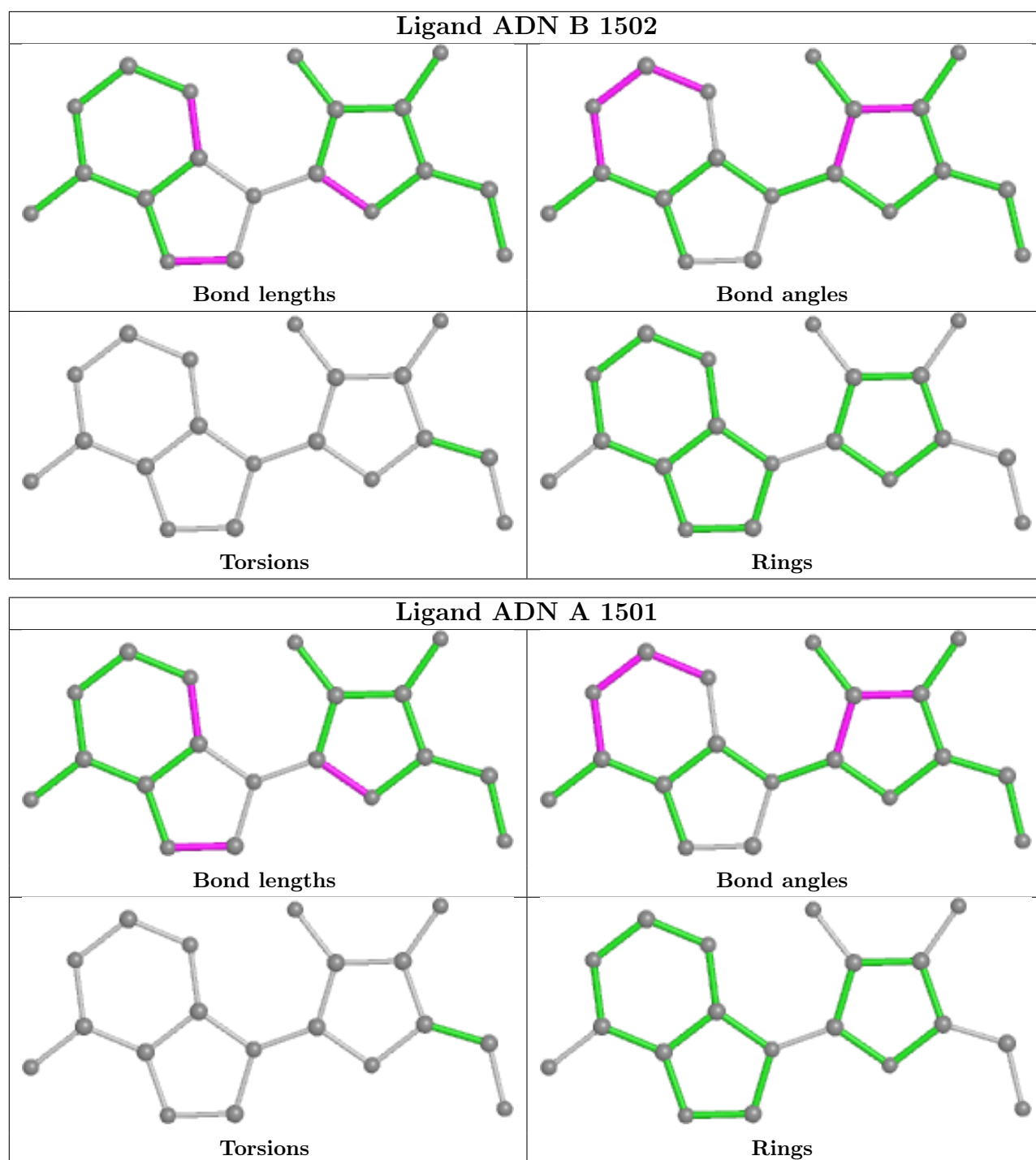
There are no torsion outliers.

There are no ring outliers.

2 monomers are involved in 5 short contacts:

Mol	Chain	Res	Type	Clashes	Symm-Clashes
4	B	1502	ADN	4	0
4	A	1501	ADN	1	0

The following is a two-dimensional graphical depiction of Mogul quality analysis of bond lengths, bond angles, torsion angles, and ring geometry for all instances of the Ligand of Interest. In addition, ligands with molecular weight > 250 and outliers as shown on the validation Tables will also be included. For torsion angles, if less than 5% of the Mogul distribution of torsion angles is within 10 degrees of the torsion angle in question, then that torsion angle is considered an outlier. Any bond that is central to one or more torsion angles identified as an outlier by Mogul will be highlighted in the graph. For rings, the root-mean-square deviation (RMSD) between the ring in question and similar rings identified by Mogul is calculated over all ring torsion angles. If the average RMSD is greater than 60 degrees and the minimal RMSD between the ring in question and any Mogul-identified rings is also greater than 60 degrees, then that ring is considered an outlier. The outliers are highlighted in purple. The color gray indicates Mogul did not find sufficient equivalents in the CSD to analyse the geometry.



5.7 Other polymers [i](#)

There are no such residues in this entry.

5.8 Polymer linkage issues [i](#)

There are no chain breaks in this entry.

6 Fit of model and data

6.1 Protein, DNA and RNA chains

In the following table, the column labelled ‘#RSRZ> 2’ contains the number (and percentage) of RSRZ outliers, followed by percent RSRZ outliers for the chain as percentile scores relative to all X-ray entries and entries of similar resolution. The OWAB column contains the minimum, median, 95th percentile and maximum values of the occupancy-weighted average B-factor per residue. The column labelled ‘Q< 0.9’ lists the number of (and percentage) of residues with an average occupancy less than 0.9.

Mol	Chain	Analysed	<RSRZ>	#RSRZ>2	OWAB(Å ²)	Q<0.9
1	A	232/235 (98%)	-0.13	3 (1%) 77 78	15, 33, 63, 83	0
1	B	223/235 (94%)	0.27	16 (7%) 15 14	16, 36, 79, 93	0
2	C	69/74 (93%)	0.30	2 (2%) 51 52	32, 48, 83, 89	0
2	D	69/74 (93%)	0.59	3 (4%) 35 34	36, 51, 65, 70	0
All	All	593/618 (95%)	0.15	24 (4%) 38 37	15, 39, 75, 93	0

All (24) RSRZ outliers are listed below:

Mol	Chain	Res	Type	RSRZ
1	B	48	ALA	6.6
1	B	217	LEU	4.5
2	C	149	GLY	4.2
1	B	209	ASP	3.6
1	B	192	VAL	3.4
1	B	200	PHE	3.4
1	A	233	ARG	3.2
1	B	49	LEU	3.2
1	B	227	TYR	3.2
1	B	202	GLY	3.1
2	D	102	VAL	2.7
2	D	81	ASN	2.6
1	A	189	GLY	2.3
1	B	136	VAL	2.3
1	B	50	ASN	2.3
1	B	191	ARG	2.3
1	B	221	GLU	2.2
2	C	124	ARG	2.2
1	B	52	LYS	2.2
1	B	210	PHE	2.2
2	D	139	VAL	2.2

Continued on next page...

Continued from previous page...

Mol	Chain	Res	Type	RSRZ
1	A	234	PHE	2.1
1	B	226	ILE	2.1
1	B	222	VAL	2.1

6.2 Non-standard residues in protein, DNA, RNA chains [i](#)

There are no non-standard protein/DNA/RNA residues in this entry.

6.3 Carbohydrates [i](#)

There are no monosaccharides in this entry.

6.4 Ligands [i](#)

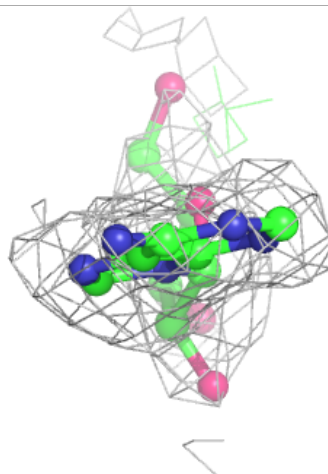
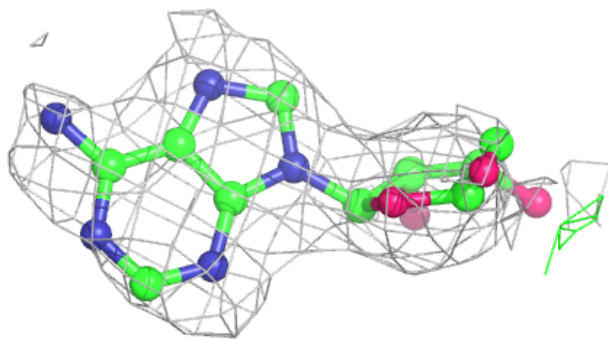
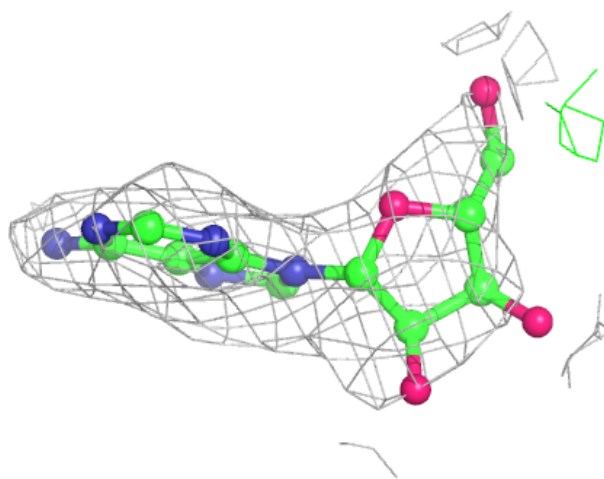
In the following table, the Atoms column lists the number of modelled atoms in the group and the number defined in the chemical component dictionary. The B-factors column lists the minimum, median, 95th percentile and maximum values of B factors of atoms in the group. The column labelled 'Q< 0.9' lists the number of atoms with occupancy less than 0.9.

Mol	Type	Chain	Res	Atoms	RSCC	RSR	B-factors(\AA^2)	Q<0.9
4	ADN	A	1501	19/19	0.90	0.21	53,58,67,68	0
4	ADN	B	1502	19/19	0.91	0.25	37,46,58,59	0
3	BTN	A	1401	16/16	0.96	0.15	23,24,30,32	0
3	BTN	B	1402	16/16	0.97	0.24	27,32,39,41	0

The following is a graphical depiction of the model fit to experimental electron density of all instances of the Ligand of Interest. In addition, ligands with molecular weight > 250 and outliers as shown on the geometry validation Tables will also be included. Each fit is shown from different orientation to approximate a three-dimensional view.

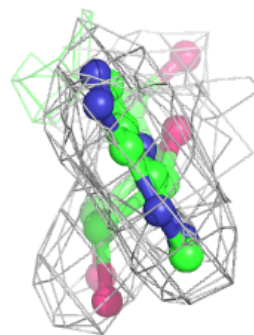
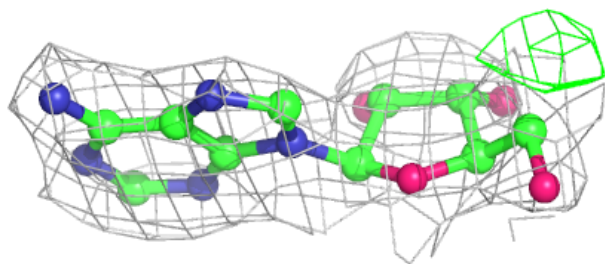
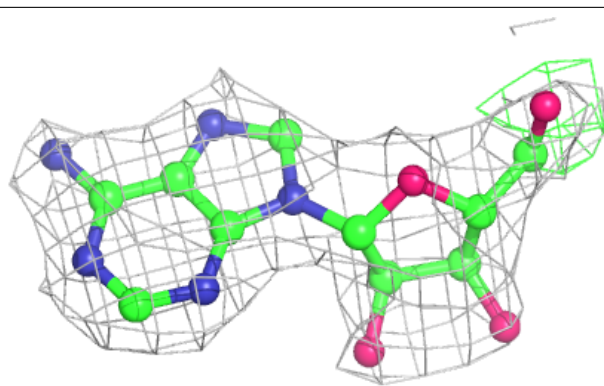
Electron density around ADN A 1501:

$2mF_o-DF_c$ (at 0.7 rmsd) in gray
 mF_o-DF_c (at 3 rmsd) in purple (negative)
and green (positive)



Electron density around ADN B 1502:

$2mF_o - DF_c$ (at 0.7 rmsd) in gray
 $mF_o - DF_c$ (at 3 rmsd) in purple (negative)
and green (positive)



6.5 Other polymers [i](#)

There are no such residues in this entry.