



Full wwPDB X-ray Structure Validation Report ⓘ

Jun 14, 2020 – 10:25 pm BST

PDB ID : 3EJN
Title : CRYSTAL STRUCTURE OF A SUSL HOMOLOG (BF3025) FROM BAC-
TEROIDES FRAGILIS NCTC 9343 AT 1.50 Å RESOLUTION
Authors : Joint Center for Structural Genomics (JCSG)
Deposited on : 2008-09-18
Resolution : 1.50 Å(reported)

This is a Full wwPDB X-ray Structure Validation Report for a publicly released PDB entry.

We welcome your comments at validation@mail.wwpdb.org

A user guide is available at

<https://www.wwpdb.org/validation/2017/XrayValidationReportHelp>

with specific help available everywhere you see the ⓘ symbol.

The following versions of software and data (see [references ⓘ](#)) were used in the production of this report:

MolProbity	:	4.02b-467
Mogul	:	1.8.5 (274361), CSD as541be (2020)
Xtriage (Phenix)	:	1.13
EDS	:	2.11
Percentile statistics	:	20191225.v01 (using entries in the PDB archive December 25th 2019)
Refmac	:	5.8.0158
CCP4	:	7.0.044 (Gargrove)
Ideal geometry (proteins)	:	Engh & Huber (2001)
Ideal geometry (DNA, RNA)	:	Parkinson et al. (1996)
Validation Pipeline (wwPDB-VP)	:	2.11

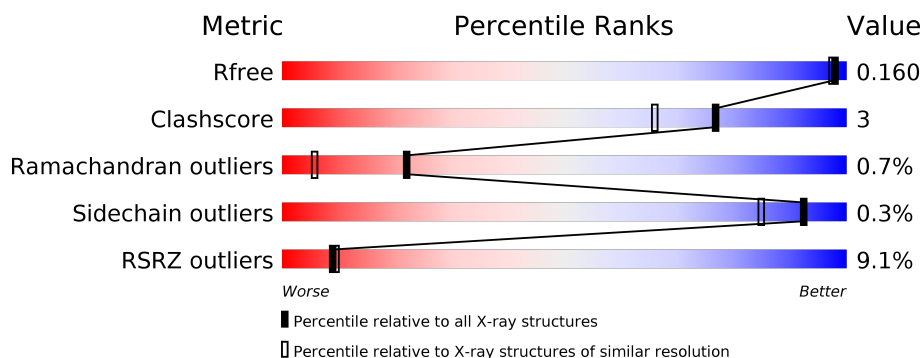
1 Overall quality at a glance

The following experimental techniques were used to determine the structure:

X-RAY DIFFRACTION

The reported resolution of this entry is 1.50 Å.

Percentile scores (ranging between 0-100) for global validation metrics of the entry are shown in the following graphic. The table shows the number of entries on which the scores are based.



Metric	Whole archive (#Entries)	Similar resolution (#Entries, resolution range(Å))
R_{free}	130704	2936 (1.50-1.50)
Clashscore	141614	3144 (1.50-1.50)
Ramachandran outliers	138981	3066 (1.50-1.50)
Sidechain outliers	138945	3064 (1.50-1.50)
RSRZ outliers	127900	2884 (1.50-1.50)

The table below summarises the geometric issues observed across the polymeric chains and their fit to the electron density. The red, orange, yellow and green segments on the lower bar indicate the fraction of residues that contain outliers for ≥ 3 , 2, 1 and 0 types of geometric quality criteria respectively. A grey segment represents the fraction of residues that are not modelled. The numeric value for each fraction is indicated below the corresponding segment, with a dot representing fractions $\leq 5\%$. The upper red bar (where present) indicates the fraction of residues that have poor fit to the electron density. The numeric value is given above the bar.

Mol	Chain	Length	Quality of chain
1	A	474	<div> <div>8%</div> <div>86%</div> <div>9%</div> <div>5%</div> </div>

2 Entry composition [i](#)

There are 5 unique types of molecules in this entry. The entry contains 4246 atoms, of which 0 are hydrogens and 0 are deuteriums.

In the tables below, the ZeroOcc column contains the number of atoms modelled with zero occupancy, the AltConf column contains the number of residues with at least one atom in alternate conformation and the Trace column contains the number of residues modelled with at most 2 atoms.

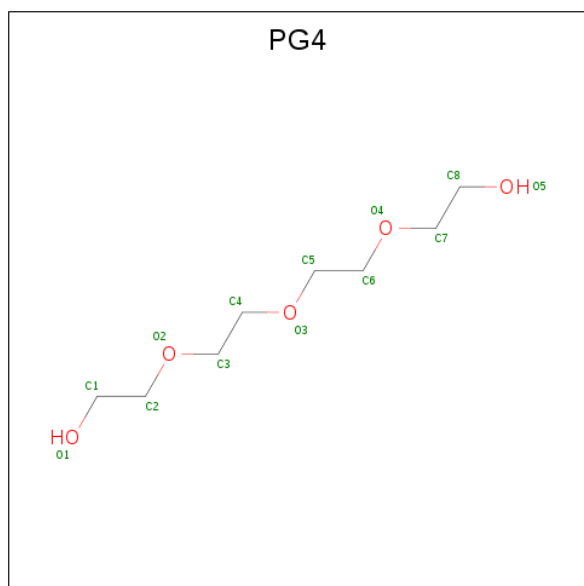
- Molecule 1 is a protein called SusD homolog.

Mol	Chain	Residues	Atoms						ZeroOcc	AltConf	Trace
			Total	C	N	O	S	Se			
1	A	450	3706	2360	620	711	1	14	0	16	0

There is a discrepancy between the modelled and reference sequences:

Chain	Residue	Modelled	Actual	Comment	Reference
A	17	GLY	-	leader sequence	UNP Q5LB02

- Molecule 2 is TETRAETHYLENE GLYCOL (three-letter code: PG4) (formula: C₈H₁₈O₅).



Mol	Chain	Residues	Atoms			ZeroOcc	AltConf
			Total	C	O		
2	A	1	7	4	3	0	0
2	A	1	7	4	3	0	0
2	A	1	7	4	3	0	0

- Molecule 3 is FORMIC ACID (three-letter code: FMT) (formula: CH_2O_2).



Mol	Chain	Residues	Atoms			ZeroOcc	AltConf
3	A	1	Total	C	O	0	0
			3	1	2		
3	A	1	Total	C	O	0	0
			3	1	2		
3	A	1	Total	C	O	0	0
			3	1	2		
3	A	1	Total	C	O	0	0
			3	1	2		

- Molecule 4 is MAGNESIUM ION (three-letter code: MG) (formula: Mg).

Mol	Chain	Residues	Atoms		ZeroOcc	AltConf
4	A	1	Total	Mg	0	0
			1	1		

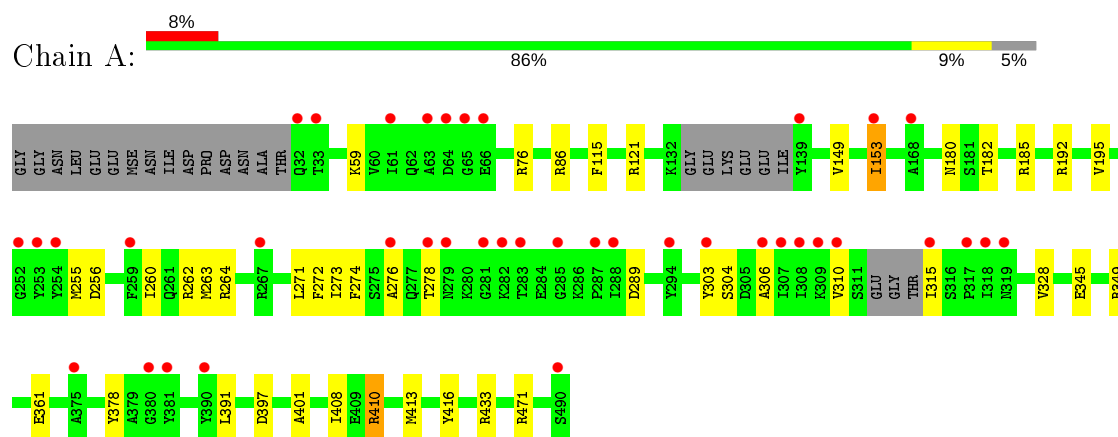
- Molecule 5 is water.

Mol	Chain	Residues	Atoms		ZeroOcc	AltConf
5	A	493	Total	O	0	13
			506	506		

3 Residue-property plots [i](#)

These plots are drawn for all protein, RNA and DNA chains in the entry. The first graphic for a chain summarises the proportions of the various outlier classes displayed in the second graphic. The second graphic shows the sequence view annotated by issues in geometry and electron density. Residues are color-coded according to the number of geometric quality criteria for which they contain at least one outlier: green = 0, yellow = 1, orange = 2 and red = 3 or more. A red dot above a residue indicates a poor fit to the electron density ($RSRZ > 2$). Stretches of 2 or more consecutive residues without any outlier are shown as a green connector. Residues present in the sample, but not in the model, are shown in grey.

• Molecule 1: SusD homolog



4 Data and refinement statistics

Property	Value	Source
Space group	H 3	Depositor
Cell constants a, b, c, α , β , γ	166.99 Å 166.99 Å 48.94 Å 90.00° 90.00° 120.00°	Depositor
Resolution (Å)	29.07 – 1.50 29.08 – 1.50	Depositor EDS
% Data completeness (in resolution range)	99.2 (29.07-1.50) 99.7 (29.08-1.50)	Depositor EDS
R_{merge}	0.03	Depositor
R_{sym}	(Not available)	Depositor
$\langle I/\sigma(I) \rangle$ ¹	2.20 (at 1.50 Å)	Xtriage
Refinement program	REFMAC 5.5.0053, PHENIX	Depositor
R, R_{free}	0.154 , 0.168 0.162 , 0.160	Depositor DCC
R_{free} test set	4170 reflections (5.14%)	wwPDB-VP
Wilson B-factor (Å ²)	15.0	Xtriage
Anisotropy	0.263	Xtriage
Bulk solvent k_{sol} (e/Å ³), B_{sol} (Å ²)	0.34 , 35.4	EDS
L-test for twinning ²	$\langle L \rangle = 0.39$, $\langle L^2 \rangle = 0.21$	Xtriage
Estimated twinning fraction	0.299 for h,-h-k,-l	Xtriage
F_o, F_c correlation	0.97	EDS
Total number of atoms	4246	wwPDB-VP
Average B, all atoms (Å ²)	22.0	wwPDB-VP

Xtriage's analysis on translational NCS is as follows: *The largest off-origin peak in the Patterson function is 3.45% of the height of the origin peak. No significant pseudotranslation is detected.*

¹Intensities estimated from amplitudes.

²Theoretical values of $\langle |L| \rangle$, $\langle L^2 \rangle$ for acentric reflections are 0.5, 0.333 respectively for untwinned datasets, and 0.375, 0.2 for perfectly twinned datasets.

5 Model quality [i](#)

5.1 Standard geometry [i](#)

Bond lengths and bond angles in the following residue types are not validated in this section: PG4, MG, FMT

The Z score for a bond length (or angle) is the number of standard deviations the observed value is removed from the expected value. A bond length (or angle) with $|Z| > 5$ is considered an outlier worth inspection. RMSZ is the root-mean-square of all Z scores of the bond lengths (or angles).

Mol	Chain	Bond lengths		Bond angles	
		RMSZ	$\# Z > 5$	RMSZ	$\# Z > 5$
1	A	0.83	0/3828	0.96	15/5170 (0.3%)

There are no bond length outliers.

All (15) bond angle outliers are listed below:

Mol	Chain	Res	Type	Atoms	Z	Observed(°)	Ideal(°)
1	A	264	ARG	NE-CZ-NH1	7.92	124.26	120.30
1	A	185	ARG	NE-CZ-NH2	-6.65	116.97	120.30
1	A	471	ARG	NE-CZ-NH1	6.47	123.54	120.30
1	A	433	ARG	NE-CZ-NH2	-6.19	117.21	120.30
1	A	264	ARG	NE-CZ-NH2	-6.09	117.26	120.30
1	A	115	PHE	CB-CG-CD2	5.99	124.99	120.80
1	A	192	ARG	NE-CZ-NH1	5.69	123.14	120.30
1	A	410	ARG	NE-CZ-NH1	5.46	123.03	120.30
1	A	397	ASP	CB-CG-OD1	5.37	123.13	118.30
1	A	262	ARG	NE-CZ-NH1	5.33	122.97	120.30
1	A	121	ARG	NE-CZ-NH2	-5.30	117.65	120.30
1	A	471	ARG	NE-CZ-NH2	-5.30	117.65	120.30
1	A	86	ARG	NE-CZ-NH1	5.25	122.93	120.30
1	A	76	ARG	NE-CZ-NH1	5.13	122.87	120.30
1	A	349	ARG	NE-CZ-NH2	-5.02	117.79	120.30

There are no chirality outliers.

There are no planarity outliers.

5.2 Too-close contacts [i](#)

In the following table, the Non-H and H(model) columns list the number of non-hydrogen atoms and hydrogen atoms in the chain respectively. The H(added) column lists the number of hydrogen

atoms added and optimized by MolProbity. The Clashes column lists the number of clashes within the asymmetric unit, whereas Symm-Clashes lists symmetry related clashes.

Mol	Chain	Non-H	H(model)	H(added)	Clashes	Symm-Clashes
1	A	3706	0	3547	22	0
2	A	21	0	27	0	0
3	A	12	0	4	0	0
4	A	1	0	0	0	0
5	A	506	0	0	2	0
All	All	4246	0	3578	22	0

The all-atom clashscore is defined as the number of clashes found per 1000 atoms (including hydrogen atoms). The all-atom clashscore for this structure is 3.

All (22) close contacts within the same asymmetric unit are listed below, sorted by their clash magnitude.

Atom-1	Atom-2	Interatomic distance (Å)	Clash overlap (Å)
1:A:180:ASN:OD1	1:A:182[B]:THR:HG22	1.77	0.83
1:A:413[B]:MSE:HE2	1:A:413[B]:MSE:HA	1.61	0.82
1:A:255[B]:MSE:HB3	1:A:260[B]:ILE:HD11	1.69	0.72
1:A:149:VAL:O	1:A:153[A]:ILE:HG23	2.00	0.61
1:A:256:ASP:O	1:A:260[B]:ILE:HD12	2.00	0.61
1:A:361:GLU:HG2	1:A:391:LEU:HD22	1.83	0.60
1:A:153[A]:ILE:HD11	1:A:195:VAL:HG11	1.83	0.59
1:A:182[A]:THR:HG23	5:A:847:HOH:O	2.04	0.57
1:A:272:PHE:CZ	1:A:289:ASP:HA	2.45	0.51
1:A:401:ALA:HB2	1:A:410:ARG:HD2	1.93	0.50
1:A:273:ILE:HG22	1:A:378:TYR:CG	2.46	0.50
1:A:413[B]:MSE:HE1	1:A:416:TYR:CD2	2.48	0.49
1:A:59[A]:LYS:NZ	1:A:416:TYR:O	2.44	0.48
1:A:153[A]:ILE:HD11	1:A:195:VAL:HG21	1.96	0.47
1:A:263[B]:MSE:HE1	1:A:274:PHE:CE2	2.50	0.47
1:A:278[A]:THR:HG23	1:A:315:ILE:N	2.30	0.46
1:A:306:ALA:O	1:A:310:VAL:HG23	2.14	0.46
1:A:276:ALA:HB2	5:A:515[B]:HOH:O	2.17	0.45
1:A:263[A]:MSE:HE3	1:A:271:LEU:N	2.33	0.44
1:A:345:GLU:HG3	1:A:408:ILE:HD12	2.01	0.43
1:A:413[B]:MSE:CE	1:A:413[B]:MSE:HA	2.40	0.42
1:A:255[B]:MSE:CB	1:A:260[B]:ILE:HD11	2.47	0.40

There are no symmetry-related clashes.

5.3 Torsion angles [i](#)

5.3.1 Protein backbone [i](#)

In the following table, the Percentiles column shows the percent Ramachandran outliers of the chain as a percentile score with respect to all X-ray entries followed by that with respect to entries of similar resolution.

The Analysed column shows the number of residues for which the backbone conformation was analysed, and the total number of residues.

Mol	Chain	Analysed	Favoured	Allowed	Outliers	Percentiles
1	A	459/474 (97%)	446 (97%)	10 (2%)	3 (1%)	22 6

All (3) Ramachandran outliers are listed below:

Mol	Chain	Res	Type
1	A	303	TYR
1	A	304	SER
1	A	328	VAL

5.3.2 Protein sidechains [i](#)

In the following table, the Percentiles column shows the percent sidechain outliers of the chain as a percentile score with respect to all X-ray entries followed by that with respect to entries of similar resolution.

The Analysed column shows the number of residues for which the sidechain conformation was analysed, and the total number of residues.

Mol	Chain	Analysed	Rotameric	Outliers	Percentiles
1	A	389/390 (100%)	387 (100%)	2 (0%)	88 78

All (2) residues with a non-rotameric sidechain are listed below:

Mol	Chain	Res	Type
1	A	153[A]	ILE
1	A	153[B]	ILE

Some sidechains can be flipped to improve hydrogen bonding and reduce clashes. All (2) such sidechains are listed below:

Mol	Chain	Res	Type
1	A	216	ASN

Continued on next page...

Continued from previous page...

Mol	Chain	Res	Type
1	A	220	ASN

5.3.3 RNA [i](#)

There are no RNA molecules in this entry.

5.4 Non-standard residues in protein, DNA, RNA chains [i](#)

There are no non-standard protein/DNA/RNA residues in this entry.

5.5 Carbohydrates [i](#)

There are no carbohydrates in this entry.

5.6 Ligand geometry [i](#)

Of 8 ligands modelled in this entry, 1 is monoatomic - leaving 7 for Mogul analysis.

In the following table, the Counts columns list the number of bonds (or angles) for which Mogul statistics could be retrieved, the number of bonds (or angles) that are observed in the model and the number of bonds (or angles) that are defined in the Chemical Component Dictionary. The Link column lists molecule types, if any, to which the group is linked. The Z score for a bond length (or angle) is the number of standard deviations the observed value is removed from the expected value. A bond length (or angle) with $|Z| > 2$ is considered an outlier worth inspection. RMSZ is the root-mean-square of all Z scores of the bond lengths (or angles).

Mol	Type	Chain	Res	Link	Bond lengths			Bond angles		
					Counts	RMSZ	$\# Z > 2$	Counts	RMSZ	$\# Z > 2$
3	FMT	A	5	-	0,2,2	0.00	-	0,1,1	0.00	-
3	FMT	A	7	-	0,2,2	0.00	-	0,1,1	0.00	-
2	PG4	A	3	-	6,6,12	0.53	0	5,5,11	0.58	0
3	FMT	A	4	-	0,2,2	0.00	-	0,1,1	0.00	-
2	PG4	A	2	-	6,6,12	0.58	0	5,5,11	0.58	0
2	PG4	A	1	-	6,6,12	0.42	0	5,5,11	0.68	0
3	FMT	A	6	-	0,2,2	0.00	-	0,1,1	0.00	-

In the following table, the Chirals column lists the number of chiral outliers, the number of chiral centers analysed, the number of these observed in the model and the number defined in the Chemical Component Dictionary. Similar counts are reported in the Torsion and Rings columns. '-' means no outliers of that kind were identified.

Mol	Type	Chain	Res	Link	Chirals	Torsions	Rings
2	PG4	A	3	-	-	2/4/4/10	-
2	PG4	A	1	-	-	0/4/4/10	-
2	PG4	A	2	-	-	1/4/4/10	-

There are no bond length outliers.

There are no bond angle outliers.

There are no chirality outliers.

All (3) torsion outliers are listed below:

Mol	Chain	Res	Type	Atoms
2	A	2	PG4	O1-C1-C2-O2
2	A	3	PG4	O2-C3-C4-O3
2	A	3	PG4	C4-C3-O2-C2

There are no ring outliers.

No monomer is involved in short contacts.

5.7 Other polymers [i](#)

There are no such residues in this entry.

5.8 Polymer linkage issues [i](#)

There are no chain breaks in this entry.

6 Fit of model and data ⓘ

6.1 Protein, DNA and RNA chains ⓘ

In the following table, the column labelled ‘#RSRZ> 2’ contains the number (and percentage) of RSRZ outliers, followed by percent RSRZ outliers for the chain as percentile scores relative to all X-ray entries and entries of similar resolution. The OWAB column contains the minimum, median, 95th percentile and maximum values of the occupancy-weighted average B-factor per residue. The column labelled ‘Q< 0.9’ lists the number of (and percentage) of residues with an average occupancy less than 0.9.

Mol	Chain	Analysed	<RSRZ>	#RSRZ>2	OWAB(Å ²)	Q<0.9
1	A	439/474 (92%)	0.49	40 (9%) 9 9	11, 21, 39, 51	0

All (40) RSRZ outliers are listed below:

Mol	Chain	Res	Type	RSRZ
1	A	139	TYR	6.9
1	A	307	ILE	5.0
1	A	490	SER	4.8
1	A	303	TYR	4.2
1	A	283	THR	4.0
1	A	309	LYS	4.0
1	A	310	VAL	3.9
1	A	381	TYR	3.6
1	A	285	GLY	3.6
1	A	276	ALA	3.5
1	A	380	GLY	3.4
1	A	288	ILE	3.4
1	A	278[A]	THR	3.0
1	A	306	ALA	3.0
1	A	63	ALA	3.0
1	A	254	TYR	2.9
1	A	315	ILE	2.7
1	A	294	TYR	2.7
1	A	168	ALA	2.7
1	A	61	ILE	2.6
1	A	64	ASP	2.6
1	A	282	LYS	2.5
1	A	32	GLN	2.5
1	A	279	ASN	2.5
1	A	317	PRO	2.5
1	A	308	ILE	2.5
1	A	318	ILE	2.4

Continued on next page...

Continued from previous page...

Mol	Chain	Res	Type	RSRZ
1	A	267	ARG	2.4
1	A	65	GLY	2.3
1	A	287	PRO	2.3
1	A	253	TYR	2.3
1	A	375	ALA	2.2
1	A	252	GLY	2.2
1	A	281	GLY	2.2
1	A	33	THR	2.1
1	A	153[A]	ILE	2.1
1	A	66	GLU	2.1
1	A	259	PHE	2.1
1	A	390	TYR	2.1
1	A	319	ASN	2.0

6.2 Non-standard residues in protein, DNA, RNA chains [i](#)

There are no non-standard protein/DNA/RNA residues in this entry.

6.3 Carbohydrates [i](#)

There are no carbohydrates in this entry.

6.4 Ligands [i](#)

In the following table, the Atoms column lists the number of modelled atoms in the group and the number defined in the chemical component dictionary. The B-factors column lists the minimum, median, 95th percentile and maximum values of B factors of atoms in the group. The column labelled 'Q< 0.9' lists the number of atoms with occupancy less than 0.9.

Mol	Type	Chain	Res	Atoms	RSCC	RSR	B-factors(\AA^2)	Q<0.9
2	PG4	A	2	7/13	0.80	0.18	35,43,44,45	0
2	PG4	A	3	7/13	0.86	0.14	35,36,38,40	0
3	FMT	A	7	3/3	0.87	0.10	50,50,51,51	0
3	FMT	A	4	3/3	0.90	0.12	26,26,29,31	0
4	MG	A	8	1/1	0.92	0.14	24,24,24,24	0
2	PG4	A	1	7/13	0.94	0.09	16,19,21,21	0
3	FMT	A	5	3/3	0.98	0.09	22,22,22,23	0
3	FMT	A	6	3/3	0.98	0.07	17,17,17,22	0

6.5 Other polymers [i](#)

There are no such residues in this entry.