



Full wwPDB X-ray Structure Validation Report ⓘ

Aug 8, 2020 – 07:02 AM BST

PDB ID : 3EJT
Title : Golgi alpha-Mannosidase II in complex with 5-substituted swainsonine analog:(5R)-5-[2'-(4-tert-butylphenyl)ethyl]-swainsonine
Authors : Kuntz, D.A.; Shea, K.; Rose, D.R.
Deposited on : 2008-09-18
Resolution : 1.35 Å(reported)

This is a Full wwPDB X-ray Structure Validation Report for a publicly released PDB entry.

We welcome your comments at validation@mail.wwpdb.org

A user guide is available at

<https://www.wwpdb.org/validation/2017/XrayValidationReportHelp>

with specific help available everywhere you see the ⓘ symbol.

The following versions of software and data (see [references ⓘ](#)) were used in the production of this report:

MolProbity : 4.02b-467
Mogul : 1.8.5 (274361), CSD as541be (2020)
Xtriage (Phenix) : 1.13
EDS : 2.13.1
buster-report : 1.1.7 (2018)
Percentile statistics : 20191225.v01 (using entries in the PDB archive December 25th 2019)
Refmac : 5.8.0158
CCP4 : 7.0.044 (Gargrove)
Ideal geometry (proteins) : Engh & Huber (2001)
Ideal geometry (DNA, RNA) : Parkinson et al. (1996)
Validation Pipeline (wwPDB-VP) : 2.13.1

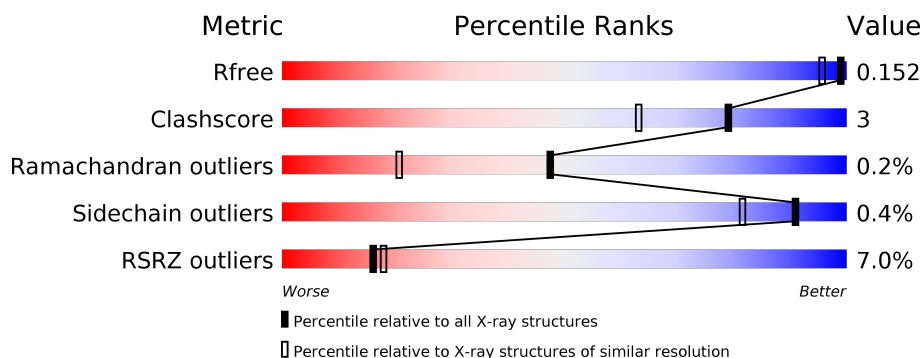
1 Overall quality at a glance

The following experimental techniques were used to determine the structure:

X-RAY DIFFRACTION

The reported resolution of this entry is 1.35 Å.

Percentile scores (ranging between 0-100) for global validation metrics of the entry are shown in the following graphic. The table shows the number of entries on which the scores are based.



Metric	Whole archive (#Entries)	Similar resolution (#Entries, resolution range(Å))
R_{free}	130704	1509 (1.38-1.34)
Clashscore	141614	1551 (1.38-1.34)
Ramachandran outliers	138981	1530 (1.38-1.34)
Sidechain outliers	138945	1530 (1.38-1.34)
RSRZ outliers	127900	1487 (1.38-1.34)

The table below summarises the geometric issues observed across the polymeric chains and their fit to the electron density. The red, orange, yellow and green segments on the lower bar indicate the fraction of residues that contain outliers for ≥ 3 , 2, 1 and 0 types of geometric quality criteria respectively. A grey segment represents the fraction of residues that are not modelled. The numeric value for each fraction is indicated below the corresponding segment, with a dot representing fractions $\leq 5\%$. The upper red bar (where present) indicates the fraction of residues that have poor fit to the electron density. The numeric value is given above the bar.

Mol	Chain	Length	Quality of chain
1	A	1045	<div> <div>7%</div> <div>91%</div> <div>6%</div> </div>

2 Entry composition

There are 7 unique types of molecules in this entry. The entry contains 9704 atoms, of which 0 are hydrogens and 0 are deuteriums.

In the tables below, the ZeroOcc column contains the number of atoms modelled with zero occupancy, the AltConf column contains the number of residues with at least one atom in alternate conformation and the Trace column contains the number of residues modelled with at most 2 atoms.

- Molecule 1 is a protein called Alpha-mannosidase 2.

Mol	Chain	Residues	Atoms					ZeroOcc	AltConf	Trace
1	A	1016	Total	C	N	O	S	0	37	0
			8366	5320	1459	1543	44			

There are 13 discrepancies between the modelled and reference sequences:

Chain	Residue	Modelled	Actual	Comment	Reference
A	1	ARG	-	expression tag	UNP Q24451
A	2	SER	-	expression tag	UNP Q24451
A	3	SER	-	expression tag	UNP Q24451
A	4	HIS	-	expression tag	UNP Q24451
A	5	HIS	-	expression tag	UNP Q24451
A	6	HIS	-	expression tag	UNP Q24451
A	7	HIS	-	expression tag	UNP Q24451
A	8	HIS	-	expression tag	UNP Q24451
A	9	HIS	-	expression tag	UNP Q24451
A	10	GLY	-	expression tag	UNP Q24451
A	11	GLU	-	expression tag	UNP Q24451
A	12	PHE	-	expression tag	UNP Q24451
A	907	LYS	GLU	SEE REMARK 999	UNP Q24451

- Molecule 2 is 2-acetamido-2-deoxy-beta-D-glucopyranose (three-letter code: NAG) (formula: $C_8H_{15}NO_6$).

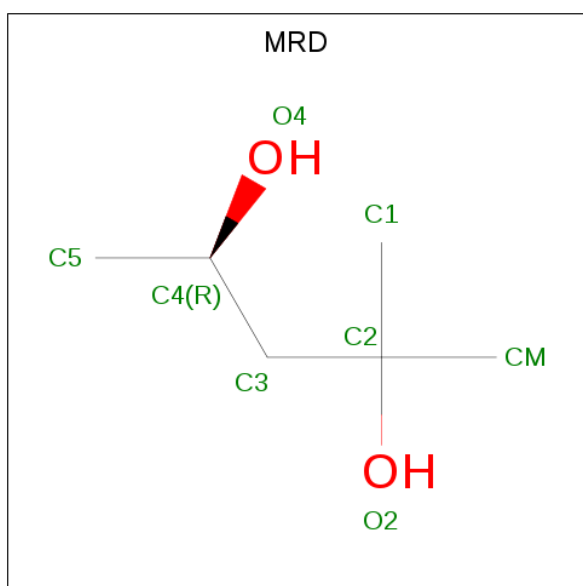


Mol	Chain	Residues	Atoms				ZeroOcc	AltConf
2	A	1	Total	C	N	O	0	0
			13	8	1	4		

- Molecule 3 is ZINC ION (three-letter code: ZN) (formula: Zn).

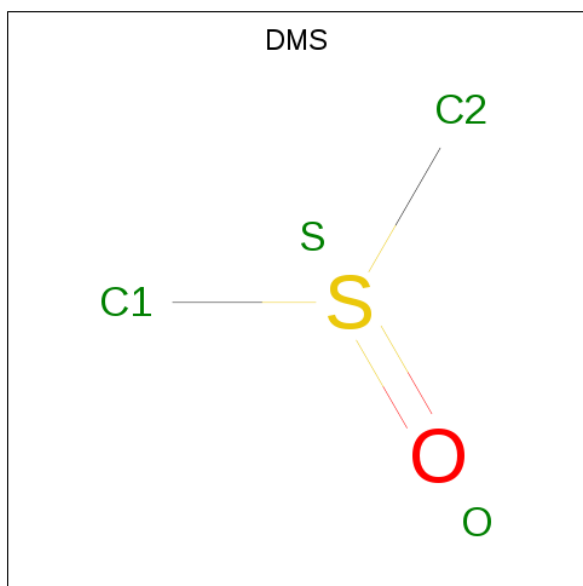
Mol	Chain	Residues	Atoms		ZeroOcc	AltConf
3	A	1	Total	Zn	0	0
			1	1		

- Molecule 4 is (4R)-2-METHYLPENTANE-2,4-DIOL (three-letter code: MRD) (formula: C₆H₁₄O₂).



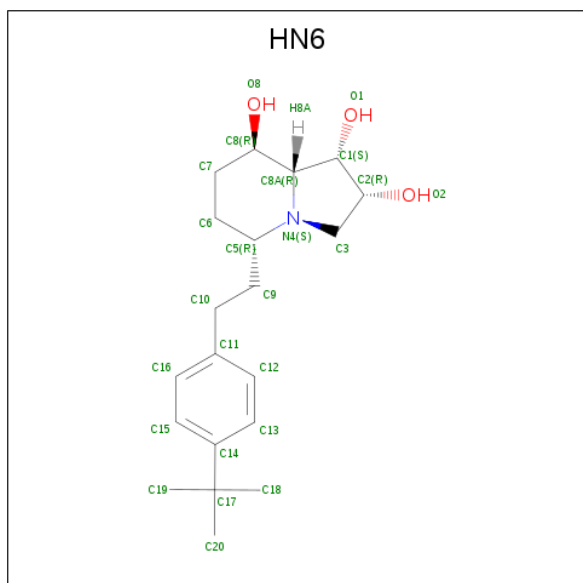
Mol	Chain	Residues	Atoms			ZeroOcc	AltConf
4	A	1	Total	C	O	0	0
			8	6	2		

- Molecule 5 is DIMETHYL SULFOXIDE (three-letter code: DMS) (formula: C_2H_6OS).



Mol	Chain	Residues	Atoms				ZeroOcc	AltConf
5	A	1	Total	C	O	S	0	0
			4	2	1	1		

- Molecule 6 is (1S,2R,5R,8R,8aR)-5-[2-(4-tert-butylphenyl)ethyl]octahydroindolizine-1,2,8-triol (three-letter code: HN6) (formula: $C_{20}H_{31}NO_3$).

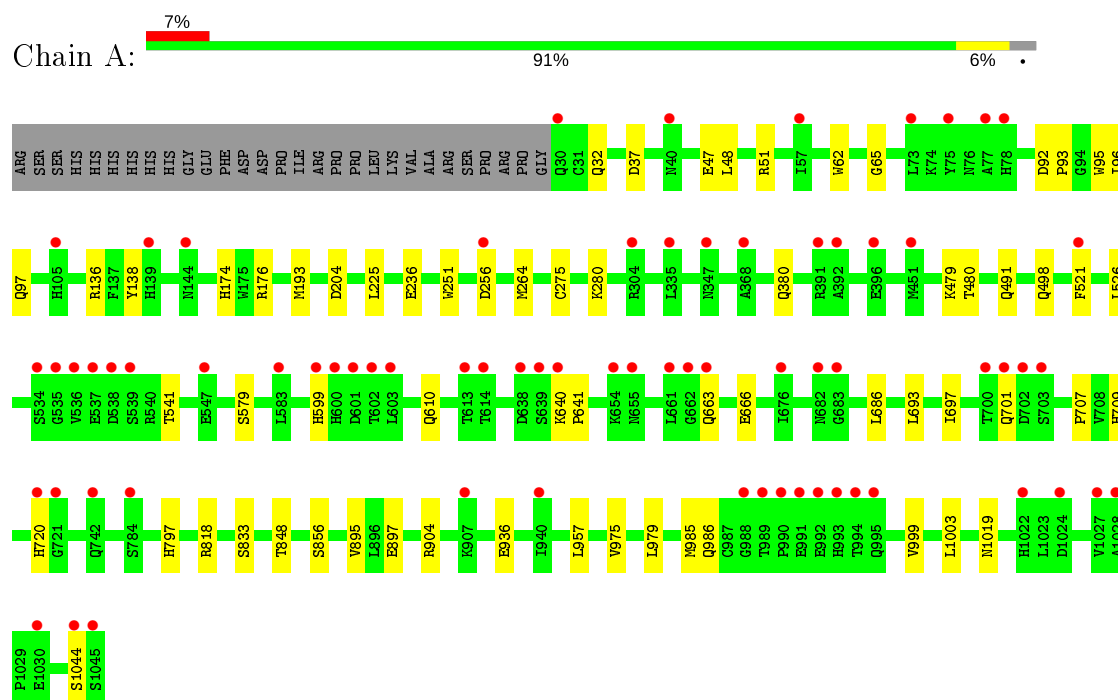


Mol	Chain	Residues	Atoms				ZeroOcc	AltConf
6	A	1	Total	C	N	O	0	0
			24	20	1	3		

- Molecule 7 is water.

Mol	Chain	Residues	Atoms		ZeroOcc	AltConf
7	A	1284	Total	O	0	6
			1288	1288		

- Molecule 1: Alpha-mannosidase 2



4 Data and refinement statistics

Property	Value	Source
Space group	P 21 21 21	Depositor
Cell constants a, b, c, α , β , γ	69.37Å 110.38Å 139.92Å 90.00° 90.00° 90.00°	Depositor
Resolution (Å)	29.55 – 1.35 29.55 – 1.35	Depositor EDS
% Data completeness (in resolution range)	99.4 (29.55-1.35) 99.4 (29.55-1.35)	Depositor EDS
R_{merge}	0.08	Depositor
R_{sym}	(Not available)	Depositor
$\langle I/\sigma(I) \rangle$ ¹	5.11 (at 1.35Å)	Xtriage
Refinement program	REFMAC, CNS	Depositor
R, R_{free}	0.158 , 0.176 0.153 , 0.152	Depositor DCC
R_{free} test set	3516 reflections (1.51%)	wwPDB-VP
Wilson B-factor (Å ²)	11.6	Xtriage
Anisotropy	0.149	Xtriage
Bulk solvent k_{sol} (e/Å ³), B_{sol} (Å ²)	0.40 , 58.8	EDS
L-test for twinning ²	$\langle L \rangle = 0.50$, $\langle L^2 \rangle = 0.33$	Xtriage
Estimated twinning fraction	No twinning to report.	Xtriage
F_o, F_c correlation	0.96	EDS
Total number of atoms	9704	wwPDB-VP
Average B, all atoms (Å ²)	14.0	wwPDB-VP

Xtriage's analysis on translational NCS is as follows: *The largest off-origin peak in the Patterson function is 3.45% of the height of the origin peak. No significant pseudotranslation is detected.*

¹Intensities estimated from amplitudes.

²Theoretical values of $\langle |L| \rangle$, $\langle L^2 \rangle$ for acentric reflections are 0.5, 0.333 respectively for untwinned datasets, and 0.375, 0.2 for perfectly twinned datasets.

5 Model quality

5.1 Standard geometry

Bond lengths and bond angles in the following residue types are not validated in this section: MRD, ZN, DMS, NAG, HN6

The Z score for a bond length (or angle) is the number of standard deviations the observed value is removed from the expected value. A bond length (or angle) with $|Z| > 5$ is considered an outlier worth inspection. RMSZ is the root-mean-square of all Z scores of the bond lengths (or angles).

Mol	Chain	Bond lengths		Bond angles	
		RMSZ	$\# Z > 5$	RMSZ	$\# Z > 5$
1	A	0.61	0/8727	0.66	0/11845

There are no bond length outliers.

There are no bond angle outliers.

There are no chirality outliers.

There are no planarity outliers.

5.2 Too-close contacts

In the following table, the Non-H and H(model) columns list the number of non-hydrogen atoms and hydrogen atoms in the chain respectively. The H(added) column lists the number of hydrogen atoms added and optimized by MolProbity. The Clashes column lists the number of clashes within the asymmetric unit, whereas Symm-Clashes lists symmetry related clashes.

Mol	Chain	Non-H	H(model)	H(added)	Clashes	Symm-Clashes
1	A	8366	0	8165	47	0
2	A	13	0	13	0	0
3	A	1	0	0	0	0
4	A	8	0	14	0	0
5	A	4	0	6	0	0
6	A	24	0	29	0	0
7	A	1288	0	0	24	0
All	All	9704	0	8227	47	0

The all-atom clashscore is defined as the number of clashes found per 1000 atoms (including hydrogen atoms). The all-atom clashscore for this structure is 3.

All (47) close contacts within the same asymmetric unit are listed below, sorted by their clash magnitude.

Atom-1	Atom-2	Interatomic distance (Å)	Clash overlap (Å)
1:A:498[B]:GLN:HG2	1:A:526:LEU:HD12	1.22	1.10
1:A:610:GLN:HG3	7:A:2109:HOH:O	1.61	0.98
1:A:380:GLN:HG2	7:A:2138:HOH:O	1.76	0.84
1:A:599:HIS:CD2	7:A:2109:HOH:O	2.36	0.77
1:A:280:LYS:HE3	7:A:1213:HOH:O	1.86	0.76
1:A:37:ASP:HB2	7:A:2172:HOH:O	1.88	0.72
1:A:136:ARG:HD3	7:A:1644:HOH:O	1.91	0.70
1:A:479:LYS:HE3	7:A:1657:HOH:O	1.92	0.68
1:A:47:GLU:OE1	1:A:51:ARG:NH1	2.28	0.66
1:A:541[A]:THR:HG23	7:A:1603:HOH:O	1.93	0.65
1:A:979[B]:LEU:HD21	1:A:999:VAL:HG11	1.77	0.65
1:A:97:GLN:HG2	7:A:2298:HOH:O	1.97	0.65
1:A:693:LEU:HD13	7:A:1558:HOH:O	1.95	0.64
1:A:936:GLU:HG3	7:A:2098:HOH:O	1.99	0.62
1:A:37:ASP:N	7:A:2172:HOH:O	2.25	0.60
1:A:256:ASP:HB2	7:A:2166:HOH:O	2.02	0.58
1:A:138[A]:TYR:CE1	1:A:193[A]:MET:CE	2.87	0.58
1:A:666[A]:GLU:HG2	7:A:1893:HOH:O	2.06	0.55
1:A:904:ARG:HG2	1:A:985:MET:SD	2.49	0.53
1:A:521:PHE:HZ	1:A:936:GLU:OE2	1.91	0.53
1:A:986:GLN:HG3	7:A:1369:HOH:O	2.08	0.53
1:A:541[A]:THR:HG21	7:A:2102:HOH:O	2.08	0.53
1:A:957:LEU:HD11	1:A:979[A]:LEU:HG	1.92	0.52
1:A:174:HIS:CE1	1:A:176:ARG:HD3	2.44	0.51
1:A:663:GLN:HG3	7:A:2021:HOH:O	2.10	0.51
1:A:37:ASP:CB	7:A:2172:HOH:O	2.54	0.50
1:A:975:VAL:HG21	1:A:1003:LEU:CD1	2.42	0.49
1:A:32:GLN:NE2	7:A:2166:HOH:O	2.45	0.49
1:A:707:PRO:HG2	1:A:797[B]:HIS:CD2	2.48	0.49
1:A:62:TRP:CD2	1:A:65:GLY:HA3	2.48	0.49
1:A:579[B]:SER:OG	1:A:641:PRO:HB3	2.14	0.48
1:A:797[B]:HIS:HB2	7:A:2113:HOH:O	2.15	0.46
1:A:1019:ASN:HB3	7:A:2217:HOH:O	2.14	0.46
1:A:895:VAL:HG12	1:A:897:GLU:HG3	1.98	0.46
1:A:491[A]:GLN:NE2	7:A:1608:HOH:O	2.23	0.45
1:A:686:LEU:HD22	1:A:697:ILE:HG12	1.98	0.45
1:A:709[A]:HIS:ND1	7:A:1554:HOH:O	2.35	0.44
1:A:96:ILE:HG23	1:A:479:LYS:HD2	1.98	0.44
1:A:48:LEU:HD11	1:A:236:GLU:HG2	2.01	0.42
1:A:833:SER:C	1:A:848[B]:THR:HG22	2.39	0.42
1:A:640:LYS:HA	1:A:641:PRO:HD3	1.90	0.41
1:A:480:THR:HG23	7:A:1625:HOH:O	2.20	0.41

Continued on next page...

Continued from previous page...

Atom-1	Atom-2	Interatomic distance (Å)	Clash overlap (Å)
1:A:251:TRP:C	1:A:251:TRP:CD1	2.93	0.41
1:A:225:LEU:HD21	1:A:264[A]:MET:SD	2.61	0.41
1:A:818[B]:ARG:HD3	1:A:856:SER:O	2.22	0.40
1:A:92:ASP:HA	1:A:93:PRO:HD3	1.95	0.40

There are no symmetry-related clashes.

5.3 Torsion angles [i](#)

5.3.1 Protein backbone [i](#)

In the following table, the Percentiles column shows the percent Ramachandran outliers of the chain as a percentile score with respect to all X-ray entries followed by that with respect to entries of similar resolution.

The Analysed column shows the number of residues for which the backbone conformation was analysed, and the total number of residues.

Mol	Chain	Analysed	Favoured	Allowed	Outliers	Percentiles
1	A	1051/1045 (101%)	1027 (98%)	22 (2%)	2 (0%)	47 21

All (2) Ramachandran outliers are listed below:

Mol	Chain	Res	Type
1	A	95	TRP
1	A	204	ASP

5.3.2 Protein sidechains [i](#)

In the following table, the Percentiles column shows the percent sidechain outliers of the chain as a percentile score with respect to all X-ray entries followed by that with respect to entries of similar resolution.

The Analysed column shows the number of residues for which the sidechain conformation was analysed, and the total number of residues.

Mol	Chain	Analysed	Rotameric	Outliers	Percentiles
1	A	939/929 (101%)	934 (100%)	5 (0%)	88 74

All (5) residues with a non-rotameric sidechain are listed below:

Mol	Chain	Res	Type
1	A	275	CYS
1	A	701	GLN
1	A	720[A]	HIS
1	A	720[B]	HIS
1	A	1044	SER

Some sidechains can be flipped to improve hydrogen bonding and reduce clashes. All (1) such sidechains are listed below:

Mol	Chain	Res	Type
1	A	223	ASN

5.3.3 RNA [i](#)

There are no RNA molecules in this entry.

5.4 Non-standard residues in protein, DNA, RNA chains [i](#)

There are no non-standard protein/DNA/RNA residues in this entry.

5.5 Carbohydrates [i](#)

There are no monosaccharides in this entry.

5.6 Ligand geometry [i](#)

Of 5 ligands modelled in this entry, 1 is monoatomic - leaving 4 for Mogul analysis.

In the following table, the Counts columns list the number of bonds (or angles) for which Mogul statistics could be retrieved, the number of bonds (or angles) that are observed in the model and the number of bonds (or angles) that are defined in the Chemical Component Dictionary. The Link column lists molecule types, if any, to which the group is linked. The Z score for a bond length (or angle) is the number of standard deviations the observed value is removed from the expected value. A bond length (or angle) with $|Z| > 2$ is considered an outlier worth inspection. RMSZ is the root-mean-square of all Z scores of the bond lengths (or angles).

Mol	Type	Chain	Res	Link	Bond lengths			Bond angles		
					Counts	RMSZ	# Z > 2	Counts	RMSZ	# Z > 2
2	NAG	A	1046	1	13,13,15	0.70	0	16,17,21	1.73	6 (37%)
6	HN6	A	1050	3	26,26,26	1.88	3 (11%)	31,39,39	1.15	1 (3%)
5	DMS	A	1049	-	3,3,3	2.64	1 (33%)	3,3,3	0.49	0

Mol	Type	Chain	Res	Link	Bond lengths			Bond angles		
					Counts	RMSZ	# Z > 2	Counts	RMSZ	# Z > 2
4	MRD	A	1048	-	7,7,7	0.43	0	9,10,10	0.54	0

In the following table, the Chirals column lists the number of chiral outliers, the number of chiral centers analysed, the number of these observed in the model and the number defined in the Chemical Component Dictionary. Similar counts are reported in the Torsion and Rings columns. '-' means no outliers of that kind were identified.

Mol	Type	Chain	Res	Link	Chirals	Torsions	Rings
2	NAG	A	1046	1	-	2/5/22/26	0/1/1/1
6	HN6	A	1050	3	-	0/11/40/40	0/3/3/3
4	MRD	A	1048	-	-	2/5/5/5	-

All (4) bond length outliers are listed below:

Mol	Chain	Res	Type	Atoms	Z	Observed(Å)	Ideal(Å)
6	A	1050	HN6	C13-C14	7.65	1.51	1.39
5	A	1049	DMS	O-S	4.44	1.80	1.50
6	A	1050	HN6	C12-C13	4.18	1.46	1.38
6	A	1050	HN6	C3-C2	2.03	1.55	1.52

All (7) bond angle outliers are listed below:

Mol	Chain	Res	Type	Atoms	Z	Observed(°)	Ideal(°)
6	A	1050	HN6	C12-C13-C14	-4.64	115.01	121.22
2	A	1046	NAG	C3-C2-N2	-2.97	104.25	109.66
2	A	1046	NAG	C7-N2-C2	2.67	118.49	114.57
2	A	1046	NAG	O5-C1-C2	-2.61	107.16	111.29
2	A	1046	NAG	C4-C3-C2	-2.41	107.49	111.02
2	A	1046	NAG	C1-O5-C5	2.36	115.39	112.19
2	A	1046	NAG	C1-C2-N2	-2.19	106.56	110.32

There are no chirality outliers.

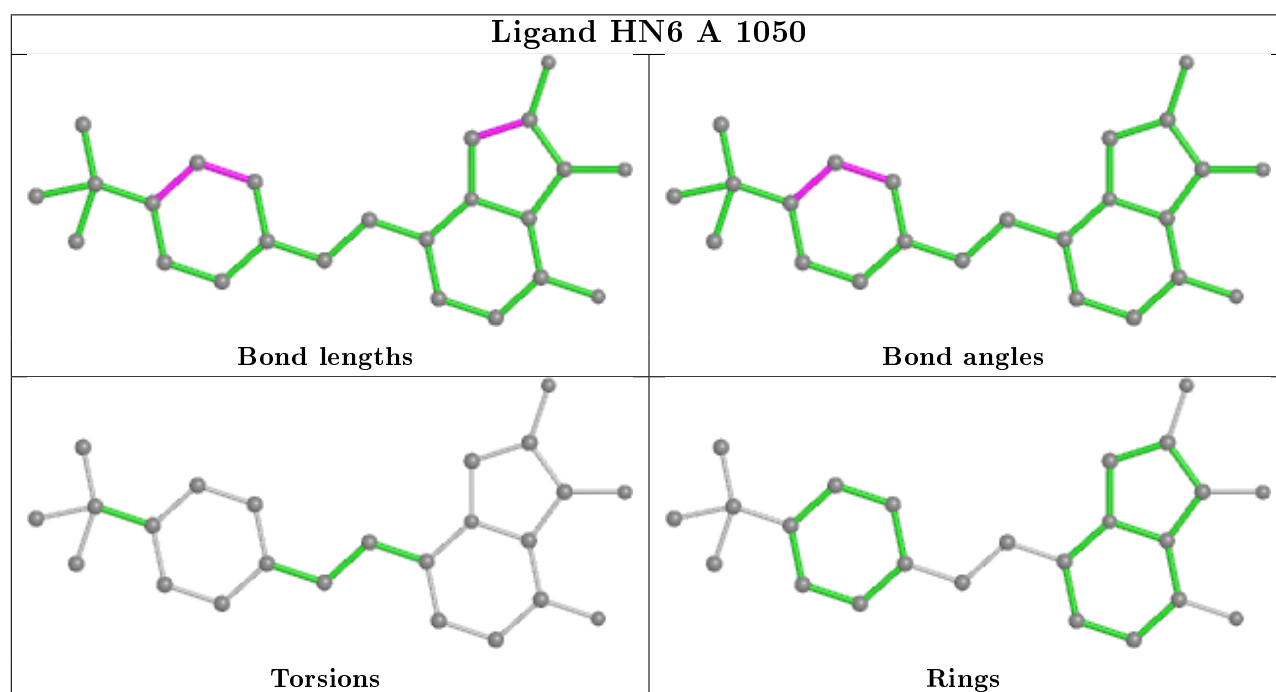
All (4) torsion outliers are listed below:

Mol	Chain	Res	Type	Atoms
4	A	1048	MRD	C2-C3-C4-O4
2	A	1046	NAG	C1-C2-N2-C7
2	A	1046	NAG	C3-C2-N2-C7
4	A	1048	MRD	C2-C3-C4-C5

There are no ring outliers.

No monomer is involved in short contacts.

The following is a two-dimensional graphical depiction of Mogul quality analysis of bond lengths, bond angles, torsion angles, and ring geometry for all instances of the Ligand of Interest. In addition, ligands with molecular weight > 250 and outliers as shown on the validation Tables will also be included. For torsion angles, if less than 5% of the Mogul distribution of torsion angles is within 10 degrees of the torsion angle in question, then that torsion angle is considered an outlier. Any bond that is central to one or more torsion angles identified as an outlier by Mogul will be highlighted in the graph. For rings, the root-mean-square deviation (RMSD) between the ring in question and similar rings identified by Mogul is calculated over all ring torsion angles. If the average RMSD is greater than 60 degrees and the minimal RMSD between the ring in question and any Mogul-identified rings is also greater than 60 degrees, then that ring is considered an outlier. The outliers are highlighted in purple. The color gray indicates Mogul did not find sufficient equivalents in the CSD to analyse the geometry.



5.7 Other polymers [i](#)

There are no such residues in this entry.

5.8 Polymer linkage issues [i](#)

There are no chain breaks in this entry.

6 Fit of model and data ⓘ

6.1 Protein, DNA and RNA chains ⓘ

In the following table, the column labelled ‘#RSRZ> 2’ contains the number (and percentage) of RSRZ outliers, followed by percent RSRZ outliers for the chain as percentile scores relative to all X-ray entries and entries of similar resolution. The OWAB column contains the minimum, median, 95th percentile and maximum values of the occupancy-weighted average B-factor per residue. The column labelled ‘Q< 0.9’ lists the number of (and percentage) of residues with an average occupancy less than 0.9.

Mol	Chain	Analysed	<RSRZ>	#RSRZ>2	OWAB(Å ²)	Q<0.9
1	A	1016/1045 (97%)	0.42	71 (6%) 16 18	6, 12, 23, 39	1 (0%)

All (71) RSRZ outliers are listed below:

Mol	Chain	Res	Type	RSRZ
1	A	702	ASP	9.7
1	A	993	HIS	8.9
1	A	701	GLN	8.1
1	A	1045	SER	7.3
1	A	991	GLU	6.7
1	A	990	PRO	6.3
1	A	78	HIS	6.0
1	A	638	ASP	5.8
1	A	992	GLU	5.7
1	A	603	LEU	5.7
1	A	602	THR	5.2
1	A	721	GLY	5.0
1	A	682	ASN	4.9
1	A	720[A]	HIS	4.9
1	A	30	GLN	4.9
1	A	77	ALA	4.7
1	A	600	HIS	4.6
1	A	538	ASP	4.5
1	A	1044	SER	4.4
1	A	534	SER	4.3
1	A	547	GLU	3.8
1	A	521	PHE	3.8
1	A	613	THR	3.8
1	A	536	VAL	3.7
1	A	784	SER	3.6
1	A	1022	HIS	3.6
1	A	1024	ASP	3.6

Continued on next page...

Continued from previous page...

Mol	Chain	Res	Type	RSRZ
1	A	1028	ALA	3.6
1	A	57	ILE	3.5
1	A	537[A]	GLU	3.3
1	A	583	LEU	3.3
1	A	40	ASN	3.1
1	A	451	MET	3.1
1	A	599	HIS	3.1
1	A	639	SER	3.0
1	A	392	ALA	3.0
1	A	535	GLY	3.0
1	A	655	ASN	2.9
1	A	994	THR	2.9
1	A	661	LEU	2.9
1	A	703	SER	2.8
1	A	662	GLY	2.8
1	A	907	LYS	2.8
1	A	989	THR	2.7
1	A	304	ARG	2.7
1	A	539	SER	2.7
1	A	654	LYS	2.6
1	A	601	ASP	2.6
1	A	700	THR	2.6
1	A	396	GLU	2.6
1	A	1027	VAL	2.6
1	A	368	ALA	2.5
1	A	144	ASN	2.5
1	A	256	ASP	2.5
1	A	995	GLN	2.4
1	A	640	LYS	2.4
1	A	614	THR	2.3
1	A	1030	GLU	2.2
1	A	347[A]	ASN	2.2
1	A	940	ILE	2.2
1	A	676	ILE	2.1
1	A	105	HIS	2.1
1	A	742	GLN	2.1
1	A	139	HIS	2.1
1	A	391	ARG	2.1
1	A	75	TYR	2.0
1	A	663	GLN	2.0
1	A	683	GLY	2.0
1	A	988	GLY	2.0

Continued on next page...

Continued from previous page...

Mol	Chain	Res	Type	RSRZ
1	A	73	LEU	2.0
1	A	335	LEU	2.0

6.2 Non-standard residues in protein, DNA, RNA chains [i](#)

There are no non-standard protein/DNA/RNA residues in this entry.

6.3 Carbohydrates [i](#)

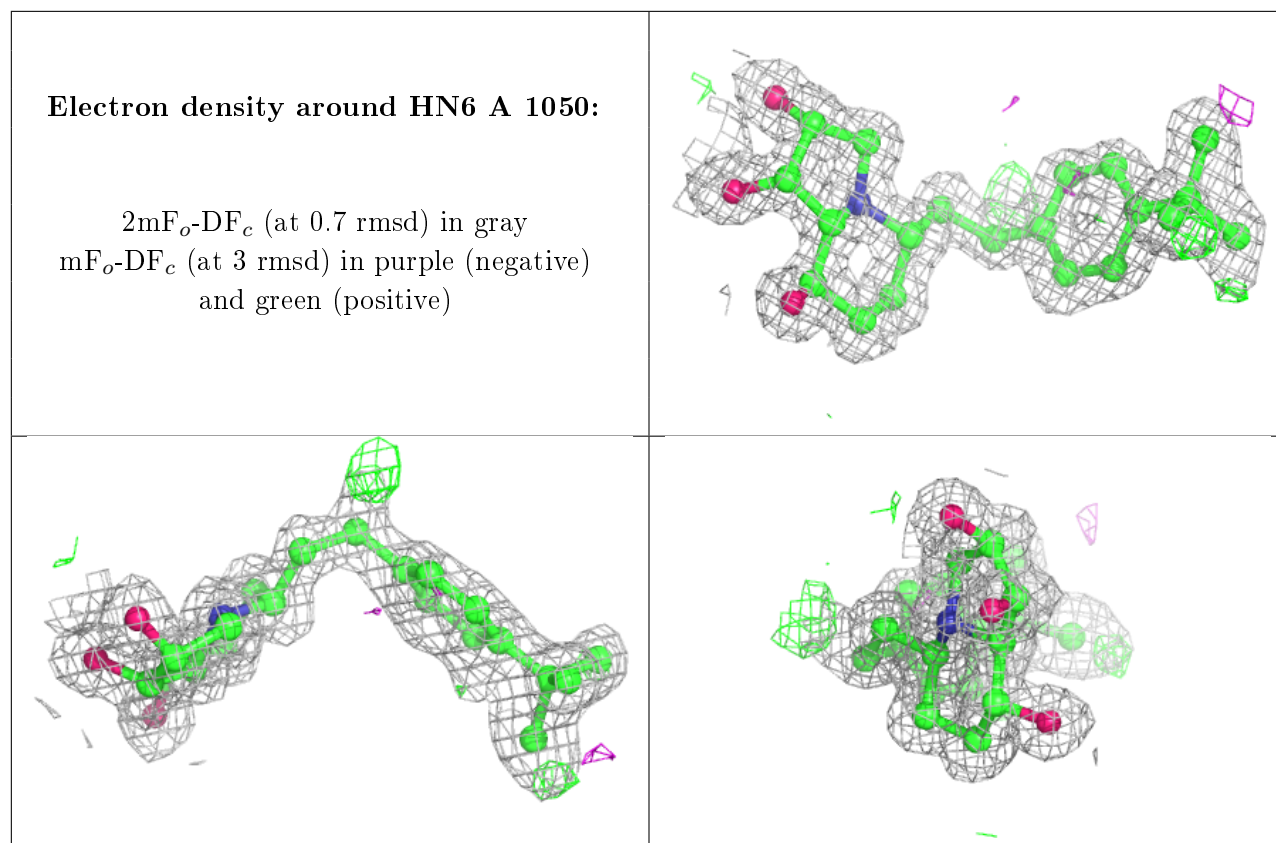
There are no monosaccharides in this entry.

6.4 Ligands [i](#)

In the following table, the Atoms column lists the number of modelled atoms in the group and the number defined in the chemical component dictionary. The B-factors column lists the minimum, median, 95th percentile and maximum values of B factors of atoms in the group. The column labelled 'Q< 0.9' lists the number of atoms with occupancy less than 0.9.

Mol	Type	Chain	Res	Atoms	RSCC	RSR	B-factors(\AA^2)	Q<0.9
2	NAG	A	1046	13/15	0.67	0.25	61,62,69,69	0
4	MRD	A	1048	8/8	0.89	0.14	12,15,16,18	0
5	DMS	A	1049	4/4	0.90	0.13	41,42,42,42	0
6	HN6	A	1050	24/24	0.96	0.09	7,9,21,22	0
3	ZN	A	1047	1/1	1.00	0.05	7,7,7,7	0

The following is a graphical depiction of the model fit to experimental electron density of all instances of the Ligand of Interest. In addition, ligands with molecular weight > 250 and outliers as shown on the geometry validation Tables will also be included. Each fit is shown from different orientation to approximate a three-dimensional view.



6.5 Other polymers [i](#)

There are no such residues in this entry.