



Full wwPDB X-ray Structure Validation Report ⓘ

Nov 2, 2021 – 04:56 AM EDT

PDB ID : 3ELA
Title : Crystal structure of active site inhibited coagulation factor VIIA mutant in complex with soluble tissue factor
Authors : Bjelke, J.R.; Fodje, M.; Svensson, L.A.
Deposited on : 2008-09-21
Resolution : 2.20 Å(reported)

This is a Full wwPDB X-ray Structure Validation Report for a publicly released PDB entry.

We welcome your comments at validation@mail.wwpdb.org

A user guide is available at

<https://www.wwpdb.org/validation/2017/XrayValidationReportHelp>

with specific help available everywhere you see the ⓘ symbol.

The following versions of software and data (see [references ⓘ](#)) were used in the production of this report:

MolProbity : 4.02b-467
Mogul : 1.8.5 (274361), CSD as541be (2020)
Xtriage (Phenix) : 1.13
EDS : 2.23.2
buster-report : 1.1.7 (2018)
Percentile statistics : 20191225.v01 (using entries in the PDB archive December 25th 2019)
Refmac : 5.8.0158
CCP4 : 7.0.044 (Gargrove)
Ideal geometry (proteins) : Engh & Huber (2001)
Ideal geometry (DNA, RNA) : Parkinson et al. (1996)
Validation Pipeline (wwPDB-VP) : 2.23.2

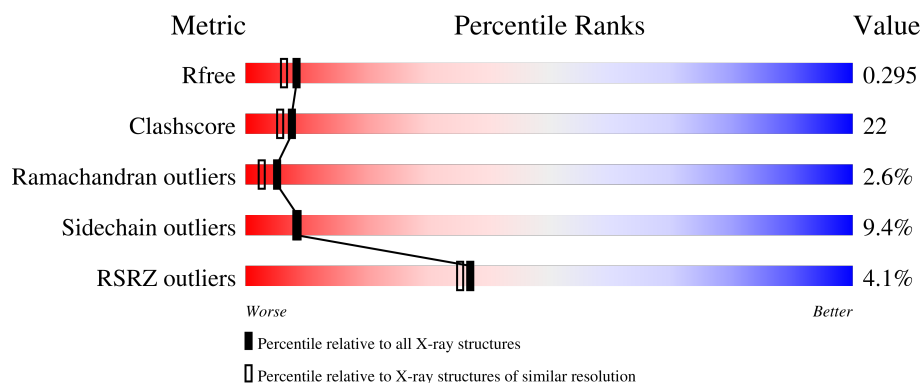
1 Overall quality at a glance

The following experimental techniques were used to determine the structure:

X-RAY DIFFRACTION

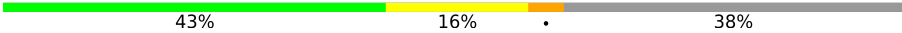


The reported resolution of this entry is 2.20 Å.

Percentile scores (ranging between 0-100) for global validation metrics of the entry are shown in the following graphic. The table shows the number of entries on which the scores are based.



Metric	Whole archive (#Entries)	Similar resolution (#Entries, resolution range(Å))
R_{free}	130704	4898 (2.20-2.20)
Clashscore	141614	5594 (2.20-2.20)
Ramachandran outliers	138981	5503 (2.20-2.20)
Sidechain outliers	138945	5504 (2.20-2.20)
RSRZ outliers	127900	4800 (2.20-2.20)

The table below summarises the geometric issues observed across the polymeric chains and their fit to the electron density. The red, orange, yellow and green segments of the lower bar indicate the fraction of residues that contain outliers for ≥ 3 , 2, 1 and 0 types of geometric quality criteria respectively. A grey segment represents the fraction of residues that are not modelled. The numeric value for each fraction is indicated below the corresponding segment, with a dot representing fractions $\leq 5\%$. The upper red bar (where present) indicates the fraction of residues that have poor fit to the electron density. The numeric value is given above the bar.

Mol	Chain	Length	Quality of chain
1	L	152	
2	H	254	
3	T	209	

2 Entry composition

There are 8 unique types of molecules in this entry. The entry contains 4389 atoms, of which 0 are hydrogens and 0 are deuteriums.

In the tables below, the ZeroOcc column contains the number of atoms modelled with zero occupancy, the AltConf column contains the number of residues with at least one atom in alternate conformation and the Trace column contains the number of residues modelled with at most 2 atoms.

- Molecule 1 is a protein called Coagulation factor VIIA light chain.

Mol	Chain	Residues	Atoms					ZeroOcc	AltConf	Trace
1	L	95	Total	C	N	O	S	0	0	0
			703	423	122	145	13			

- Molecule 2 is a protein called Coagulation factor VIIA heavy chain.

Mol	Chain	Residues	Atoms					ZeroOcc	AltConf	Trace
2	H	254	Total	C	N	O	S	0	0	0
			1911	1216	331	352	12			

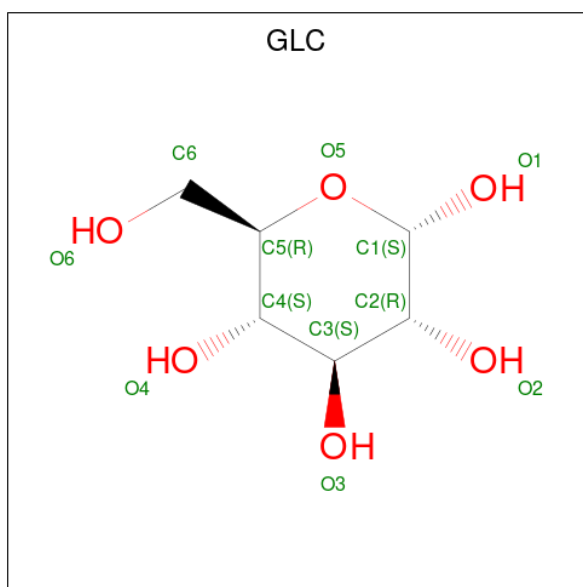
There are 3 discrepancies between the modelled and reference sequences:

Chain	Residue	Modelled	Actual	Comment	Reference
H	158	ASP	VAL	engineered mutation	UNP P08709
H	296	VAL	GLU	engineered mutation	UNP P08709
H	298	GLN	MET	engineered mutation	UNP P08709

- Molecule 3 is a protein called Tissue factor.

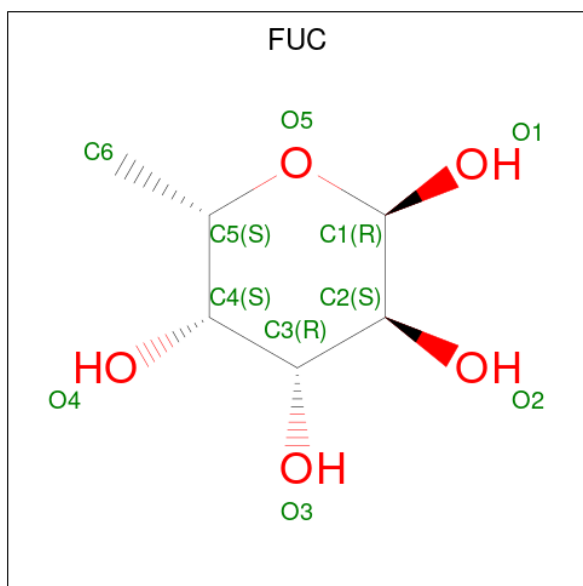
Mol	Chain	Residues	Atoms					ZeroOcc	AltConf	Trace
3	T	191	Total	C	N	O	S	0	0	0
			1505	956	242	303	4			

- Molecule 4 is alpha-D-glucopyranose (three-letter code: GLC) (formula: C₆H₁₂O₆).



Mol	Chain	Residues	Atoms			ZeroOcc	AltConf
4	L	1	Total	C	O	0	0
			11	6	5		

- Molecule 5 is alpha-L-fucopyranose (three-letter code: FUC) (formula: $C_6H_{12}O_5$).

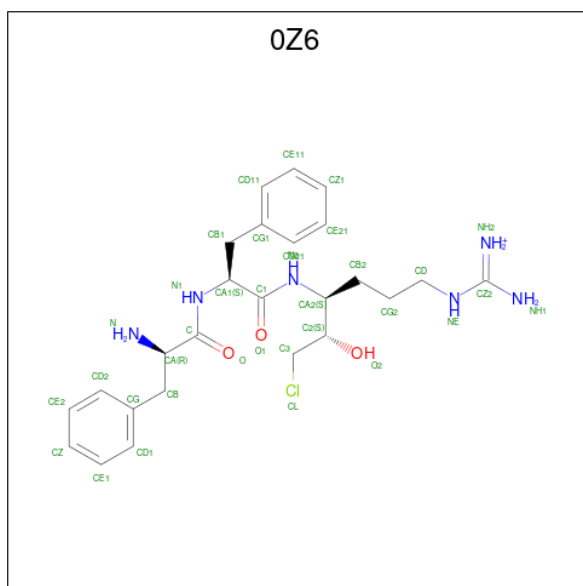


Mol	Chain	Residues	Atoms			ZeroOcc	AltConf
5	L	1	Total	C	O	0	0
			10	6	4		

- Molecule 6 is CALCIUM ION (three-letter code: CA) (formula: Ca).

Mol	Chain	Residues	Atoms	ZeroOcc	AltConf
6	H	1	Total Ca 1 1	0	0

- Molecule 7 is D-phenylalanyl-N-[(2S,3S)-6-{[amino(iminio)methyl]amino}-1-chloro-2-hydroxyhexan-3-yl]-L-phenylalaninamide (three-letter code: 0Z6) (formula: $C_{25}H_{36}ClN_6O_3$).



Mol	Chain	Residues	Atoms	ZeroOcc	AltConf
7	H	1	Total C N O 34 25 6 3	0	0

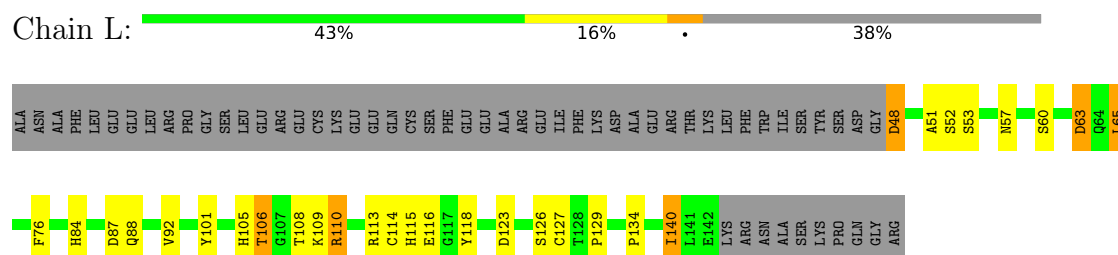
- Molecule 8 is water.

Mol	Chain	Residues	Atoms	ZeroOcc	AltConf
8	L	39	Total O 39 39	0	0
8	H	123	Total O 123 123	0	0
8	T	52	Total O 52 52	0	0

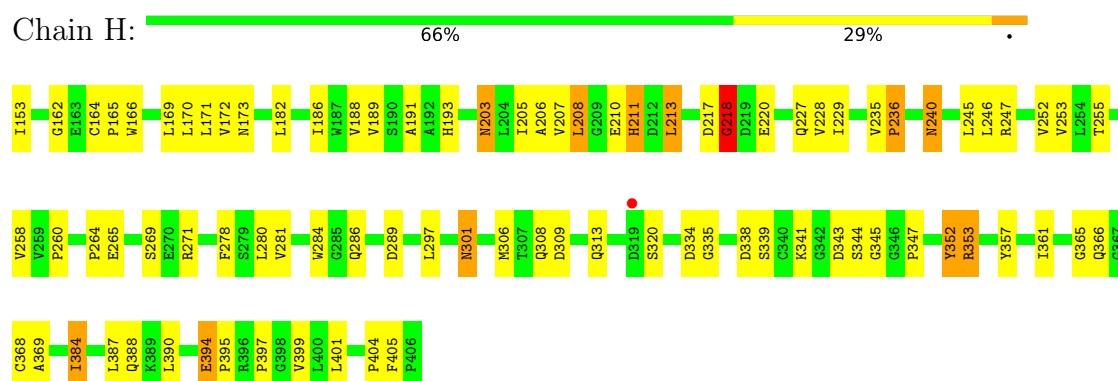
3 Residue-property plots

These plots are drawn for all protein, RNA, DNA and oligosaccharide chains in the entry. The first graphic for a chain summarises the proportions of the various outlier classes displayed in the second graphic. The second graphic shows the sequence view annotated by issues in geometry and electron density. Residues are color-coded according to the number of geometric quality criteria for which they contain at least one outlier: green = 0, yellow = 1, orange = 2 and red = 3 or more. A red dot above a residue indicates a poor fit to the electron density ($RSRZ > 2$). Stretches of 2 or more consecutive residues without any outlier are shown as a green connector. Residues present in the sample, but not in the model, are shown in grey.

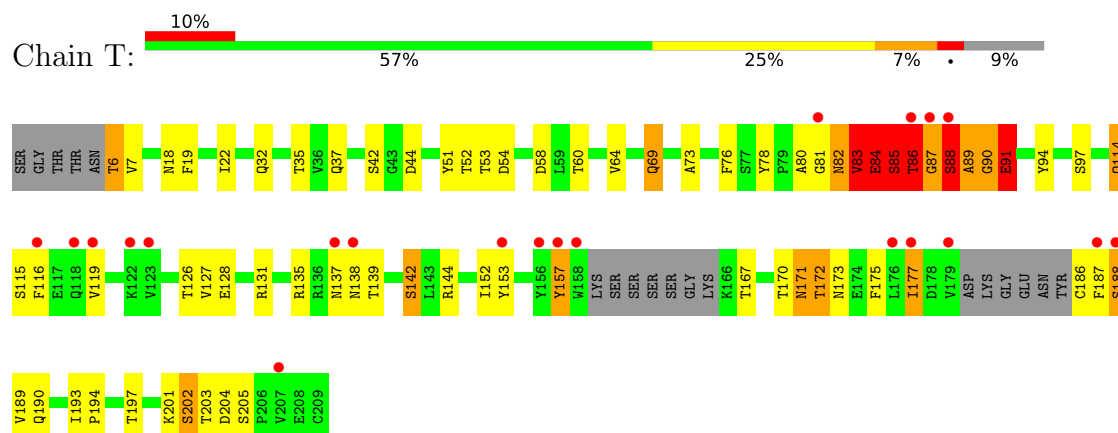
• Molecule 1: Coagulation factor VIIA light chain



• Molecule 2: Coagulation factor VIIA heavy chain



• Molecule 3: Tissue factor



4 Data and refinement statistics

Property	Value	Source
Space group	P 1 21 1	Depositor
Cell constants a, b, c, α , β , γ	78.36Å 68.56Å 78.82Å 90.00° 90.22° 90.00°	Depositor
Resolution (Å)	29.19 – 2.20 29.19 – 2.20	Depositor EDS
% Data completeness (in resolution range)	100.0 (29.19-2.20) 81.1 (29.19-2.20)	Depositor EDS
R_{merge}	0.10	Depositor
R_{sym}	(Not available)	Depositor
$\langle I/\sigma(I) \rangle$ ¹	2.15 (at 2.20Å)	Xtriage
Refinement program	REFMAC 5.2.0005	Depositor
R, R_{free}	0.233 , 0.294 0.242 , 0.295	Depositor DCC
R_{free} test set	1734 reflections (5.00%)	wwPDB-VP
Wilson B-factor (Å ²)	19.8	Xtriage
Anisotropy	1.107	Xtriage
Bulk solvent k_{sol} (e/Å ³), B_{sol} (Å ²)	0.35 , 32.8	EDS
L-test for twinning ²	$\langle L \rangle = 0.46$, $\langle L^2 \rangle = 0.28$	Xtriage
Estimated twinning fraction	0.017 for l,k,-h 0.078 for h,-k,-l 0.037 for l,-k,h	Xtriage
F_o, F_c correlation	0.90	EDS
Total number of atoms	4389	wwPDB-VP
Average B, all atoms (Å ²)	34.0	wwPDB-VP

Xtriage's analysis on translational NCS is as follows: *The largest off-origin peak in the Patterson function is 5.50% of the height of the origin peak. No significant pseudotranslation is detected.*

¹Intensities estimated from amplitudes.

²Theoretical values of $\langle |L| \rangle$, $\langle L^2 \rangle$ for acentric reflections are 0.5, 0.333 respectively for untwinned datasets, and 0.375, 0.2 for perfectly twinned datasets.

5 Model quality

5.1 Standard geometry

Bond lengths and bond angles in the following residue types are not validated in this section: 0Z6, CA, GLC, FUC

The Z score for a bond length (or angle) is the number of standard deviations the observed value is removed from the expected value. A bond length (or angle) with $|Z| > 5$ is considered an outlier worth inspection. RMSZ is the root-mean-square of all Z scores of the bond lengths (or angles).

Mol	Chain	Bond lengths		Bond angles	
		RMSZ	# $ Z > 5$	RMSZ	# $ Z > 5$
1	L	0.91	3/716 (0.4%)	0.86	0/967
2	H	0.85	1/1959 (0.1%)	0.95	2/2674 (0.1%)
3	T	0.70	0/1536	0.86	3/2097 (0.1%)
All	All	0.81	4/4211 (0.1%)	0.91	5/5738 (0.1%)

Chiral center outliers are detected by calculating the chiral volume of a chiral center and verifying if the center is modelled as a planar moiety or with the opposite hand. A planarity outlier is detected by checking planarity of atoms in a peptide group, atoms in a mainchain group or atoms of a sidechain that are expected to be planar.

Mol	Chain	#Chirality outliers	#Planarity outliers
2	H	0	2
3	T	0	10
All	All	0	12

All (4) bond length outliers are listed below:

Mol	Chain	Res	Type	Atoms	Z	Observed(Å)	Ideal(Å)
1	L	114	CYS	CB-SG	-8.96	1.67	1.82
2	H	357	TYR	CD2-CE2	5.88	1.48	1.39
1	L	116	GLU	CG-CD	5.05	1.59	1.51
1	L	127	CYS	CB-SG	-5.02	1.73	1.81

All (5) bond angle outliers are listed below:

Mol	Chain	Res	Type	Atoms	Z	Observed(°)	Ideal(°)
3	T	188	SER	CB-CA-C	-8.54	93.88	110.10
3	T	189	VAL	N-CA-C	7.47	131.18	111.00
2	H	271	ARG	NE-CZ-NH2	-5.83	117.39	120.30
3	T	44	ASP	CB-CG-OD2	-5.70	113.17	118.30

Continued on next page...

Continued from previous page...

Mol	Chain	Res	Type	Atoms	Z	Observed(°)	Ideal(°)
2	H	170	LEU	CB-CG-CD1	-5.30	102.00	111.00

There are no chirality outliers.

All (12) planarity outliers are listed below:

Mol	Chain	Res	Type	Group
2	H	218	GLY	Peptide
2	H	352	TYR	Peptide
3	T	188	SER	Peptide
3	T	81	GLY	Peptide
3	T	82	ASN	Peptide
3	T	83	VAL	Peptide
3	T	84	GLU	Peptide
3	T	85	SER	Peptide
3	T	86	THR	Peptide
3	T	87	GLY	Peptide
3	T	88	SER	Peptide
3	T	90	GLY	Peptide

5.2 Too-close contacts

In the following table, the Non-H and H(model) columns list the number of non-hydrogen atoms and hydrogen atoms in the chain respectively. The H(added) column lists the number of hydrogen atoms added and optimized by MolProbity. The Clashes column lists the number of clashes within the asymmetric unit, whereas Symm-Clashes lists symmetry-related clashes.

Mol	Chain	Non-H	H(model)	H(added)	Clashes	Symm-Clashes
1	L	703	0	622	21	0
2	H	1911	0	1816	85	0
3	T	1505	0	1421	78	0
4	L	11	0	10	1	0
5	L	10	0	10	1	0
6	H	1	0	0	0	0
7	H	34	0	32	6	0
8	H	123	0	0	18	0
8	L	39	0	0	3	0
8	T	52	0	0	3	0
All	All	4389	0	3911	178	0

The all-atom clashscore is defined as the number of clashes found per 1000 atoms (including hydrogen atoms). The all-atom clashscore for this structure is 22.

All (178) close contacts within the same asymmetric unit are listed below, sorted by their clash magnitude.

Atom-1	Atom-2	Interatomic distance (Å)	Clash overlap (Å)
3:T:87:GLY:CA	3:T:89:ALA:H	1.34	1.39
3:T:87:GLY:HA2	3:T:89:ALA:N	1.03	1.32
3:T:87:GLY:HA2	3:T:88:SER:C	1.58	1.23
3:T:85:SER:O	3:T:86:THR:HG22	1.37	1.20
3:T:87:GLY:CA	3:T:89:ALA:N	1.93	1.19
2:H:182:LEU:HD23	8:H:504:HOH:O	1.41	1.15
2:H:169:LEU:HG	8:H:518:HOH:O	1.47	1.14
3:T:84:GLU:HG3	3:T:85:SER:HB3	1.32	1.10
2:H:264:PRO:O	2:H:384:ILE:HD13	1.54	1.06
3:T:86:THR:OG1	3:T:87:GLY:HA3	1.53	1.05
2:H:191:ALA:HB2	8:H:529:HOH:O	1.58	1.01
3:T:84:GLU:CG	3:T:85:SER:HB3	1.90	1.00
3:T:86:THR:HA	3:T:90:GLY:O	1.62	0.98
2:H:306:MET:CE	3:T:91:GLU:HG2	1.96	0.94
2:H:345:GLY:HA2	8:H:529:HOH:O	1.65	0.94
3:T:87:GLY:CA	3:T:88:SER:C	2.30	0.93
2:H:306:MET:HE2	3:T:91:GLU:HG2	1.50	0.91
3:T:82:ASN:HB3	3:T:84:GLU:H	1.34	0.90
3:T:37:GLN:HG3	3:T:76:PHE:HE2	1.35	0.90
3:T:86:THR:OG1	3:T:87:GLY:CA	2.23	0.86
3:T:78:TYR:CE1	3:T:83:VAL:HG13	2.12	0.84
3:T:85:SER:O	3:T:86:THR:CG2	2.22	0.84
2:H:189:VAL:HG11	2:H:361:ILE:HD11	1.61	0.83
1:L:140:ILE:HG23	8:H:480:HOH:O	1.80	0.81
1:L:48:ASP:HA	1:L:63:ASP:OD2	1.79	0.81
3:T:157:TYR:CE2	3:T:177:ILE:HG21	2.19	0.78
3:T:115:SER:HB3	3:T:126:THR:HB	1.63	0.78
1:L:106:THR:HG21	8:L:209:HOH:O	1.85	0.75
2:H:173:ASN:HA	2:H:203:ASN:HD22	1.51	0.75
2:H:405:PHE:CA	2:H:405:PHE:CG	2.70	0.74
3:T:157:TYR:HE2	3:T:177:ILE:HG21	1.52	0.74
3:T:82:ASN:HB3	3:T:84:GLU:N	2.04	0.72
2:H:186:ILE:HD12	2:H:247:ARG:HG3	1.71	0.72
2:H:208:LEU:HD13	2:H:252:VAL:HG11	1.71	0.72
2:H:227:GLN:HE21	2:H:401:LEU:HB2	1.55	0.71
2:H:361:ILE:CG2	8:H:529:HOH:O	2.37	0.71
2:H:189:VAL:CG1	2:H:361:ILE:HD11	2.20	0.71
3:T:127:VAL:O	3:T:173:ASN:HB3	1.92	0.69
2:H:205:ILE:HD12	8:H:516:HOH:O	1.92	0.69
3:T:78:TYR:CD1	3:T:83:VAL:HG13	2.27	0.69

Continued on next page...

Continued from previous page...

Atom-1	Atom-2	Interatomic distance (Å)	Clash overlap (Å)
1:L:76:PHE:HE1	1:L:84:HIS:CD2	2.11	0.68
3:T:37:GLN:HG3	3:T:76:PHE:CE2	2.26	0.68
1:L:109:LYS:NZ	8:L:211:HOH:O	2.09	0.67
3:T:114:GLN:HB3	3:T:128:GLU:HB2	1.75	0.67
2:H:388:GLN:NE2	8:H:476:HOH:O	2.27	0.66
2:H:306:MET:CE	3:T:91:GLU:CG	2.73	0.66
3:T:157:TYR:HA	3:T:186:CYS:O	1.96	0.66
2:H:366:GLN:HG2	7:H:407:OZ6:HE1	1.76	0.66
2:H:169:LEU:HD23	2:H:171:LEU:HD11	1.78	0.65
2:H:213:LEU:HD23	2:H:213:LEU:N	2.12	0.64
3:T:84:GLU:HB2	3:T:85:SER:HB2	1.80	0.64
2:H:280:LEU:HD23	2:H:301:ASN:ND2	2.12	0.64
1:L:105:HIS:HB3	1:L:108:THR:HG22	1.78	0.64
3:T:86:THR:HG1	3:T:87:GLY:HA3	1.60	0.64
1:L:84:HIS:HB2	1:L:87:ASP:HB2	1.79	0.63
2:H:335:GLY:HA2	2:H:369:ALA:O	1.98	0.63
3:T:86:THR:CA	3:T:90:GLY:O	2.44	0.62
2:H:306:MET:HE3	3:T:91:GLU:CG	2.30	0.61
2:H:247:ARG:HD2	8:H:497:HOH:O	1.99	0.61
2:H:164:CYS:HB3	8:H:451:HOH:O	1.99	0.61
3:T:84:GLU:CG	3:T:85:SER:CB	2.75	0.60
2:H:264:PRO:O	2:H:384:ILE:CD1	2.40	0.60
3:T:78:TYR:CE1	3:T:83:VAL:CG1	2.84	0.60
1:L:60:SER:OG	5:L:216:FUC:H5	2.02	0.60
3:T:171:ASN:O	3:T:172:THR:HB	2.02	0.59
1:L:52:SER:OG	4:L:215:GLC:C1	2.50	0.59
2:H:171:LEU:HD12	2:H:207:VAL:HG23	1.85	0.59
2:H:309:ASP:O	2:H:313:GLN:HG3	2.04	0.57
2:H:210:GLU:HG3	2:H:211:HIS:N	2.19	0.57
1:L:105:HIS:CB	1:L:108:THR:HG22	2.35	0.57
3:T:86:THR:OG1	3:T:87:GLY:N	2.36	0.57
3:T:84:GLU:CB	3:T:85:SER:CB	2.83	0.57
2:H:217:ASP:O	2:H:218:GLY:C	2.43	0.57
3:T:137:ASN:O	3:T:138:ASN:HB2	2.05	0.56
3:T:87:GLY:C	3:T:89:ALA:N	2.58	0.56
2:H:193:HIS:HE1	2:H:344:SER:OG	1.89	0.55
3:T:35:THR:HG1	3:T:78:TYR:HE2	1.54	0.55
2:H:227:GLN:NE2	2:H:401:LEU:HD22	2.20	0.55
2:H:361:ILE:HG23	8:H:529:HOH:O	2.01	0.55
3:T:76:PHE:CD1	3:T:94:TYR:HB3	2.41	0.55
2:H:213:LEU:HD23	2:H:213:LEU:H	1.70	0.54

Continued on next page...

Continued from previous page...

Atom-1	Atom-2	Interatomic distance (Å)	Clash overlap (Å)
2:H:173:ASN:CA	2:H:203:ASN:HD22	2.20	0.54
3:T:171:ASN:O	3:T:172:THR:CB	2.55	0.54
3:T:202:SER:OG	3:T:203:THR:N	2.41	0.54
2:H:182:LEU:HD22	2:H:208:LEU:HD22	1.90	0.54
2:H:171:LEU:HD12	2:H:207:VAL:CG2	2.39	0.53
3:T:84:GLU:CB	3:T:85:SER:HB3	2.39	0.53
3:T:114:GLN:CB	3:T:128:GLU:HB2	2.39	0.53
2:H:227:GLN:HE21	2:H:401:LEU:CB	2.20	0.53
2:H:284:TRP:CZ2	2:H:297:LEU:HB2	2.44	0.52
2:H:404:PRO:HB3	8:H:470:HOH:O	2.09	0.52
3:T:84:GLU:OE2	3:T:85:SER:CB	2.58	0.52
1:L:110:ARG:HD2	1:L:110:ARG:C	2.31	0.51
3:T:35:THR:OG1	3:T:78:TYR:HE2	1.93	0.51
3:T:84:GLU:CB	3:T:85:SER:HB2	2.41	0.51
3:T:190:GLN:HE21	3:T:201:LYS:HB3	1.76	0.51
3:T:18:ASN:O	3:T:19:PHE:HB2	2.11	0.51
3:T:135:ARG:NH2	3:T:138:ASN:O	2.39	0.51
3:T:87:GLY:HA3	3:T:89:ALA:H	1.56	0.50
3:T:42:SER:HB2	8:T:239:HOH:O	2.09	0.50
1:L:105:HIS:HB3	1:L:108:THR:CG2	2.42	0.50
2:H:186:ILE:HD12	2:H:247:ARG:CG	2.39	0.50
2:H:289:ASP:N	8:H:453:HOH:O	2.32	0.50
3:T:53:THR:HG22	8:T:212:HOH:O	2.11	0.50
2:H:338:ASP:OD2	7:H:407:OZ6:NH2	2.43	0.50
3:T:87:GLY:HA2	3:T:89:ALA:H	0.69	0.50
2:H:182:LEU:HB3	8:H:504:HOH:O	2.12	0.49
3:T:90:GLY:O	3:T:91:GLU:O	2.30	0.49
2:H:286:GLN:OE1	2:H:341:LYS:HB2	2.12	0.49
2:H:217:ASP:O	2:H:220:GLU:OE1	2.30	0.49
2:H:366:GLN:CG	7:H:407:OZ6:HE1	2.42	0.49
2:H:361:ILE:HG12	8:H:430:HOH:O	2.10	0.49
3:T:37:GLN:O	3:T:73:ALA:HA	2.12	0.49
2:H:284:TRP:CE2	2:H:297:LEU:HB2	2.48	0.48
2:H:205:ILE:CG2	2:H:206:ALA:N	2.76	0.48
2:H:205:ILE:HG22	2:H:206:ALA:N	2.29	0.48
2:H:338:ASP:OD1	2:H:339:SER:N	2.46	0.48
2:H:353:ARG:NH2	8:H:439:HOH:O	2.47	0.48
2:H:309:ASP:HB3	2:H:313:GLN:HE21	1.79	0.47
3:T:144:ARG:NH2	3:T:172:THR:H	2.12	0.47
2:H:162:GLY:O	2:H:165:PRO:HG3	2.14	0.47
1:L:123:ASP:HB2	8:L:184:HOH:O	2.14	0.47

Continued on next page...

Continued from previous page...

Atom-1	Atom-2	Interatomic distance (Å)	Clash overlap (Å)
2:H:365:GLY:O	7:H:407:OZ6:HD1	2.14	0.47
3:T:157:TYR:HE2	3:T:177:ILE:CG2	2.26	0.47
1:L:105:HIS:CB	1:L:108:THR:CG2	2.93	0.47
2:H:308:GLN:HB2	3:T:94:TYR:CE1	2.50	0.47
3:T:85:SER:C	3:T:86:THR:HG22	2.23	0.46
2:H:153:ILE:HG12	2:H:343:ASP:OD2	2.15	0.46
2:H:193:HIS:CE1	2:H:344:SER:OG	2.51	0.46
3:T:58:ASP:OD1	3:T:60:THR:OG1	2.31	0.46
3:T:51:TYR:OH	3:T:83:VAL:HG21	2.15	0.46
2:H:227:GLN:HE22	2:H:401:LEU:HD22	1.80	0.46
3:T:131:ARG:HA	3:T:142:SER:HA	1.98	0.46
3:T:152:ILE:HG22	3:T:171:ASN:HB3	1.98	0.46
2:H:208:LEU:HD22	2:H:258:VAL:HG13	1.99	0.45
2:H:210:GLU:CG	2:H:211:HIS:N	2.80	0.45
1:L:113:ARG:NH1	1:L:113:ARG:HB2	2.31	0.45
2:H:260:PRO:HA	8:H:504:HOH:O	2.16	0.45
3:T:137:ASN:O	3:T:139:THR:HG23	2.17	0.45
3:T:52:THR:OG1	3:T:54:ASP:HB2	2.17	0.45
2:H:182:LEU:HD22	2:H:208:LEU:CD2	2.48	0.44
2:H:365:GLY:O	7:H:407:OZ6:N	2.51	0.44
2:H:182:LEU:HD13	2:H:208:LEU:HD11	2.00	0.44
2:H:253:VAL:O	2:H:255:THR:HG23	2.18	0.44
2:H:240:ASN:HD22	2:H:240:ASN:HA	1.64	0.43
2:H:341:LYS:HA	7:H:407:OZ6:HA2	2.00	0.43
1:L:115:HIS:O	1:L:118:TYR:HB2	2.18	0.43
2:H:228:VAL:HG13	2:H:246:LEU:HD12	2.00	0.43
2:H:245:LEU:HD13	2:H:387:LEU:HD22	2.00	0.43
1:L:101:TYR:CE2	2:H:265:GLU:HG3	2.54	0.43
3:T:32:GLN:HB2	3:T:78:TYR:O	2.19	0.43
1:L:65:LEU:HD22	1:L:65:LEU:HA	1.92	0.42
2:H:352:TYR:OH	2:H:353:ARG:NH1	2.53	0.42
3:T:60:THR:O	3:T:64:VAL:HG22	2.19	0.42
2:H:394:GLU:O	2:H:395:PRO:C	2.55	0.42
3:T:84:GLU:CD	3:T:85:SER:HB3	2.40	0.42
2:H:281:VAL:HA	2:H:347:PRO:O	2.19	0.42
2:H:182:LEU:HD12	2:H:188:VAL:HG22	2.02	0.42
3:T:85:SER:O	3:T:86:THR:CB	2.67	0.42
2:H:205:ILE:CD1	8:H:516:HOH:O	2.62	0.42
2:H:368:CYS:O	2:H:369:ALA:HB3	2.19	0.42
3:T:69:GLN:HE21	3:T:69:GLN:HA	1.85	0.42
2:H:229:ILE:HG21	2:H:390:LEU:HD13	2.01	0.42

Continued on next page...

Continued from previous page...

Atom-1	Atom-2	Interatomic distance (Å)	Clash overlap (Å)
3:T:6:THR:N	8:T:219:HOH:O	2.52	0.42
1:L:129:PRO:CB	1:L:134:PRO:HG3	2.50	0.41
2:H:235:VAL:HA	2:H:236:PRO:HD2	1.94	0.41
3:T:127:VAL:HG11	3:T:153:TYR:CE1	2.54	0.41
2:H:334:ASP:OD1	2:H:334:ASP:C	2.58	0.41
2:H:394:GLU:CD	2:H:394:GLU:H	2.22	0.41
1:L:101:TYR:OH	1:L:115:HIS:HD2	2.04	0.41
3:T:84:GLU:HG3	3:T:84:GLU:O	2.21	0.41
3:T:193:ILE:HA	3:T:194:PRO:HD3	1.91	0.41
3:T:170:THR:HG22	3:T:175:PHE:CZ	2.56	0.41
2:H:227:GLN:NE2	2:H:401:LEU:HB2	2.30	0.40
3:T:84:GLU:OE2	3:T:85:SER:HB3	2.21	0.40
1:L:48:ASP:HB3	1:L:51:ALA:HB2	2.02	0.40
2:H:278:PHE:HB3	2:H:301:ASN:ND2	2.36	0.40
3:T:84:GLU:HB2	3:T:85:SER:CB	2.47	0.40

There are no symmetry-related clashes.

5.3 Torsion angles

5.3.1 Protein backbone

In the following table, the Percentiles column shows the percent Ramachandran outliers of the chain as a percentile score with respect to all X-ray entries followed by that with respect to entries of similar resolution.

The Analysed column shows the number of residues for which the backbone conformation was analysed, and the total number of residues.

Mol	Chain	Analysed	Favoured	Allowed	Outliers	Percentiles	
1	L	93/152 (61%)	79 (85%)	13 (14%)	1 (1%)	14	12
2	H	252/254 (99%)	222 (88%)	24 (10%)	6 (2%)	6	3
3	T	185/209 (88%)	160 (86%)	18 (10%)	7 (4%)	3	1
All	All	530/615 (86%)	461 (87%)	55 (10%)	14 (3%)	5	3

All (14) Ramachandran outliers are listed below:

Mol	Chain	Res	Type
1	L	57	ASN
2	H	353	ARG

Continued on next page...

Continued from previous page...

Mol	Chain	Res	Type
3	T	86	THR
3	T	88	SER
3	T	89	ALA
3	T	172	THR
2	H	218	GLY
3	T	80	ALA
3	T	85	SER
2	H	384	ILE
2	H	397	PRO
3	T	91	GLU
2	H	211	HIS
2	H	236	PRO

5.3.2 Protein sidechains ⓘ

In the following table, the Percentiles column shows the percent sidechain outliers of the chain as a percentile score with respect to all X-ray entries followed by that with respect to entries of similar resolution.

The Analysed column shows the number of residues for which the sidechain conformation was analysed, and the total number of residues.

Mol	Chain	Analysed	Rotameric	Outliers	Percentiles	
1	L	79/132 (60%)	69 (87%)	10 (13%)	4	3
2	H	199/216 (92%)	188 (94%)	11 (6%)	21	26
3	T	169/192 (88%)	148 (88%)	21 (12%)	4	4
All	All	447/540 (83%)	405 (91%)	42 (9%)	8	8

All (42) residues with a non-rotameric sidechain are listed below:

Mol	Chain	Res	Type
1	L	48	ASP
1	L	53	SER
1	L	63	ASP
1	L	65	LEU
1	L	88	GLN
1	L	92	VAL
1	L	106	THR
1	L	110	ARG
1	L	126	SER
1	L	140	ILE

Continued on next page...

Continued from previous page...

Mol	Chain	Res	Type
2	H	166	TRP
2	H	172	VAL
2	H	203	ASN
2	H	208	LEU
2	H	213	LEU
2	H	240	ASN
2	H	269	SER
2	H	301	ASN
2	H	320	SER
2	H	394	GLU
2	H	399	VAL
3	T	6	THR
3	T	7	VAL
3	T	22	ILE
3	T	69	GLN
3	T	83	VAL
3	T	84	GLU
3	T	91	GLU
3	T	97	SER
3	T	114	GLN
3	T	116	PHE
3	T	119	VAL
3	T	142	SER
3	T	157	TYR
3	T	167	THR
3	T	171	ASN
3	T	177	ILE
3	T	187	PHE
3	T	197	THR
3	T	202	SER
3	T	204	ASP
3	T	205	SER

Sometimes sidechains can be flipped to improve hydrogen bonding and reduce clashes. All (14) such sidechains are listed below:

Mol	Chain	Res	Type
1	L	64	GLN
1	L	80	ASN
1	L	84	HIS
1	L	115	HIS
2	H	203	ASN
2	H	216	HIS

Continued on next page...

Continued from previous page...

Mol	Chain	Res	Type
2	H	227	GLN
2	H	240	ASN
2	H	301	ASN
2	H	366	GLN
3	T	69	GLN
3	T	114	GLN
3	T	138	ASN
3	T	190	GLN

5.3.3 RNA [i](#)

There are no RNA molecules in this entry.

5.4 Non-standard residues in protein, DNA, RNA chains [i](#)

There are no non-standard protein/DNA/RNA residues in this entry.

5.5 Carbohydrates [i](#)

There are no monosaccharides in this entry.

5.6 Ligand geometry [i](#)

Of 4 ligands modelled in this entry, 1 is monoatomic - leaving 3 for Mogul analysis.

In the following table, the Counts columns list the number of bonds (or angles) for which Mogul statistics could be retrieved, the number of bonds (or angles) that are observed in the model and the number of bonds (or angles) that are defined in the Chemical Component Dictionary. The Link column lists molecule types, if any, to which the group is linked. The Z score for a bond length (or angle) is the number of standard deviations the observed value is removed from the expected value. A bond length (or angle) with $|Z| > 2$ is considered an outlier worth inspection. RMSZ is the root-mean-square of all Z scores of the bond lengths (or angles).

Mol	Type	Chain	Res	Link	Bond lengths			Bond angles		
					Counts	RMSZ	$\# Z > 2$	Counts	RMSZ	$\# Z > 2$
5	FUC	L	216	-	10,10,11	0.59	0	14,14,16	2.16	4 (28%)
4	GLC	L	215	-	11,11,12	0.59	0	15,15,17	1.69	3 (20%)
7	OZ6	H	407	2	34,35,36	1.63	2 (5%)	41,45,46	0.57	0

In the following table, the Chirals column lists the number of chiral outliers, the number of chiral

centers analysed, the number of these observed in the model and the number defined in the Chemical Component Dictionary. Similar counts are reported in the Torsion and Rings columns. '-' means no outliers of that kind were identified.

Mol	Type	Chain	Res	Link	Chirals	Torsions	Rings
5	FUC	L	216	-	-	-	0/1/1/1
4	GLC	L	215	-	-	2/2/19/22	0/1/1/1
7	OZ6	H	407	2	-	5/35/35/37	0/2/2/2

All (2) bond length outliers are listed below:

Mol	Chain	Res	Type	Atoms	Z	Observed(Å)	Ideal(Å)
7	H	407	OZ6	O2-C2	-7.22	1.23	1.43
7	H	407	OZ6	C3-C2	-4.67	1.38	1.51

All (7) bond angle outliers are listed below:

Mol	Chain	Res	Type	Atoms	Z	Observed(°)	Ideal(°)
5	L	216	FUC	C1-C2-C3	4.69	115.43	109.67
5	L	216	FUC	O5-C1-C2	4.56	117.80	110.77
4	L	215	GLC	C1-O5-C5	3.59	117.06	112.19
5	L	216	FUC	C1-O5-C5	3.06	119.72	112.78
4	L	215	GLC	O5-C5-C6	2.85	111.67	107.20
4	L	215	GLC	O2-C2-C1	2.62	114.51	109.15
5	L	216	FUC	O5-C5-C4	2.16	113.39	109.52

There are no chirality outliers.

All (7) torsion outliers are listed below:

Mol	Chain	Res	Type	Atoms
7	H	407	OZ6	N-CA-CB-CG
7	H	407	OZ6	C3-C2-CA2-N2
7	H	407	OZ6	O2-C2-CA2-CB2
7	H	407	OZ6	C3-C2-CA2-CB2
4	L	215	GLC	O5-C5-C6-O6
4	L	215	GLC	C4-C5-C6-O6
7	H	407	OZ6	C-CA-CB-CG

There are no ring outliers.

3 monomers are involved in 8 short contacts:

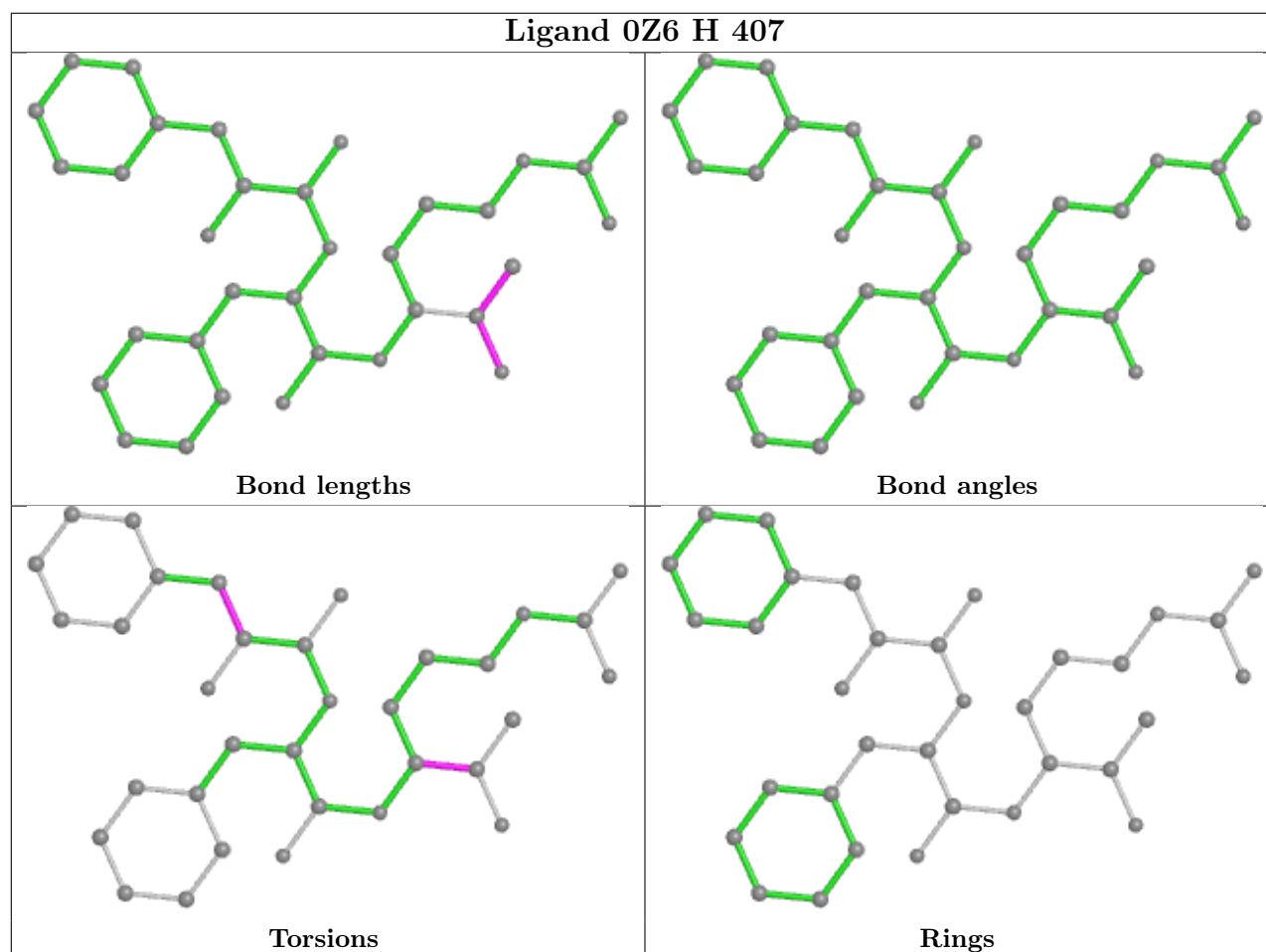
Mol	Chain	Res	Type	Clashes	Symm-Clashes
5	L	216	FUC	1	0

Continued on next page...

Continued from previous page...

Mol	Chain	Res	Type	Clashes	Symm-Clashes
4	L	215	GLC	1	0
7	H	407	0Z6	6	0

The following is a two-dimensional graphical depiction of Mogul quality analysis of bond lengths, bond angles, torsion angles, and ring geometry for all instances of the Ligand of Interest. In addition, ligands with molecular weight > 250 and outliers as shown on the validation Tables will also be included. For torsion angles, if less than 5% of the Mogul distribution of torsion angles is within 10 degrees of the torsion angle in question, then that torsion angle is considered an outlier. Any bond that is central to one or more torsion angles identified as an outlier by Mogul will be highlighted in the graph. For rings, the root-mean-square deviation (RMSD) between the ring in question and similar rings identified by Mogul is calculated over all ring torsion angles. If the average RMSD is greater than 60 degrees and the minimal RMSD between the ring in question and any Mogul-identified rings is also greater than 60 degrees, then that ring is considered an outlier. The outliers are highlighted in purple. The color gray indicates Mogul did not find sufficient equivalents in the CSD to analyse the geometry.



5.7 Other polymers [i](#)

There are no such residues in this entry.

5.8 Polymer linkage issues [i](#)

There are no chain breaks in this entry.

6 Fit of model and data

6.1 Protein, DNA and RNA chains

In the following table, the column labelled ‘#RSRZ > 2’ contains the number (and percentage) of RSRZ outliers, followed by percent RSRZ outliers for the chain as percentile scores relative to all X-ray entries and entries of similar resolution. The OWAB column contains the minimum, median, 95th percentile and maximum values of the occupancy-weighted average B-factor per residue. The column labelled ‘Q < 0.9’ lists the number of (and percentage) of residues with an average occupancy less than 0.9.

Mol	Chain	Analysed	<RSRZ>	#RSRZ>2	OWAB(Å ²)	Q<0.9
1	L	95/152 (62%)	-0.32	0 100 100	12, 29, 60, 65	0
2	H	254/254 (100%)	-0.35	1 (0%) 92 91	7, 22, 52, 61	4 (1%)
3	T	191/209 (91%)	0.40	21 (10%) 5 4	14, 46, 88, 92	10 (5%)
All	All	540/615 (87%)	-0.08	22 (4%) 37 35	7, 28, 79, 92	14 (2%)

All (22) RSRZ outliers are listed below:

Mol	Chain	Res	Type	RSRZ
3	T	119	VAL	8.4
3	T	123	VAL	6.3
3	T	138	ASN	5.6
3	T	158	TRP	5.4
3	T	118	GLN	5.2
3	T	176	LEU	4.1
3	T	187	PHE	4.1
2	H	319	ASP	3.8
3	T	116	PHE	3.8
3	T	157	TYR	3.5
3	T	156	TYR	3.4
3	T	153	TYR	3.2
3	T	87	GLY	3.2
3	T	177	ILE	3.2
3	T	207	VAL	3.1
3	T	122	LYS	2.7
3	T	179	VAL	2.5
3	T	137	ASN	2.4
3	T	88	SER	2.4
3	T	188	SER	2.3
3	T	81	GLY	2.1
3	T	86	THR	2.0

6.2 Non-standard residues in protein, DNA, RNA chains [i](#)

There are no non-standard protein/DNA/RNA residues in this entry.

6.3 Carbohydrates [i](#)

There are no monosaccharides in this entry.

6.4 Ligands [i](#)

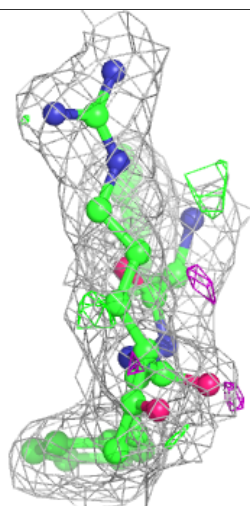
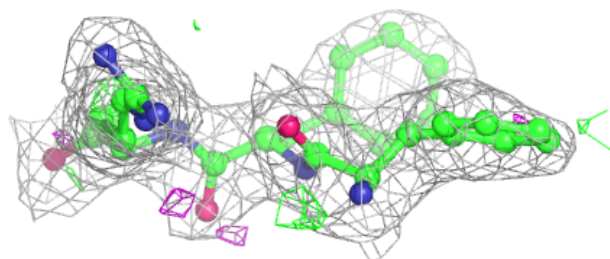
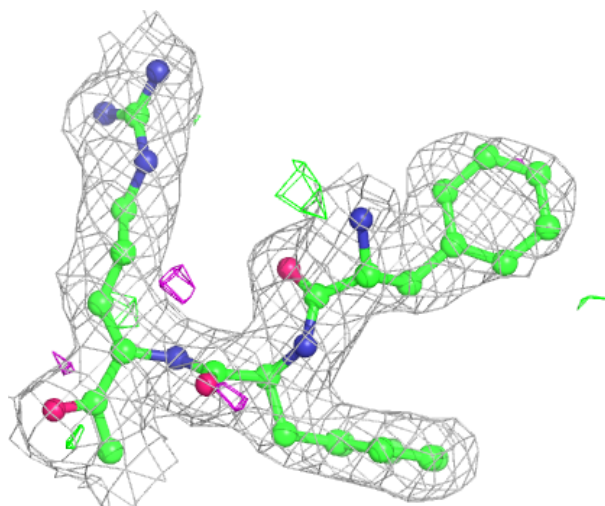
In the following table, the Atoms column lists the number of modelled atoms in the group and the number defined in the chemical component dictionary. The B-factors column lists the minimum, median, 95th percentile and maximum values of B factors of atoms in the group. The column labelled 'Q< 0.9' lists the number of atoms with occupancy less than 0.9.

Mol	Type	Chain	Res	Atoms	RSCC	RSR	B-factors(\AA^2)	Q<0.9
4	GLC	L	215	11/12	0.80	0.11	52,53,53,54	0
5	FUC	L	216	10/11	0.93	0.14	67,68,69,70	0
7	OZ6	H	407	34/35	0.93	0.12	14,31,41,42	0
6	CA	H	1	1/1	0.96	0.05	50,50,50,50	0

The following is a graphical depiction of the model fit to experimental electron density of all instances of the Ligand of Interest. In addition, ligands with molecular weight > 250 and outliers as shown on the geometry validation Tables will also be included. Each fit is shown from different orientation to approximate a three-dimensional view.

Electron density around 0Z6 H 407:

$2mF_o-DF_c$ (at 0.7 rmsd) in gray
 mF_o-DF_c (at 3 rmsd) in purple (negative)
and green (positive)



6.5 Other polymers ⓘ

There are no such residues in this entry.