



# Full wwPDB X-ray Structure Validation Report ⓘ

May 13, 2020 – 11:50 pm BST

PDB ID : 4ELG  
Title : Structure-activity relationship guides enantiomeric preference among potent inhibitors of B. anthracis dihydrofolate reductase  
Authors : Bourne, C.R.; Barrow, W.W.  
Deposited on : 2012-04-10  
Resolution : 2.10 Å(reported)

This is a Full wwPDB X-ray Structure Validation Report for a publicly released PDB entry.

We welcome your comments at [validation@mail.wwpdb.org](mailto:validation@mail.wwpdb.org)

A user guide is available at

<https://www.wwpdb.org/validation/2017/XrayValidationReportHelp>

with specific help available everywhere you see the ⓘ symbol.

---

The following versions of software and data (see [references ⓘ](#)) were used in the production of this report:

MolProbity	:	4.02b-467
Mogul	:	1.8.5 (274361), CSD as541be (2020)
Xtriage (Phenix)	:	1.13
EDS	:	2.11
buster-report	:	1.1.7 (2018)
Percentile statistics	:	20191225.v01 (using entries in the PDB archive December 25th 2019)
Refmac	:	5.8.0158
CCP4	:	7.0.044 (Gargrove)
Ideal geometry (proteins)	:	Engh & Huber (2001)
Ideal geometry (DNA, RNA)	:	Parkinson et al. (1996)
Validation Pipeline (wwPDB-VP)	:	2.11

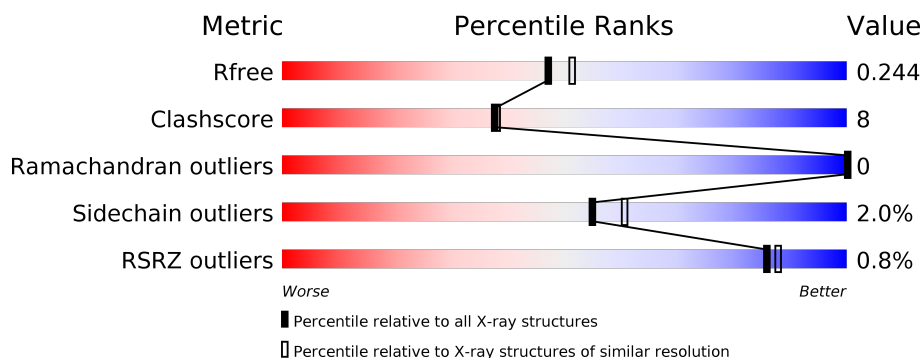
# 1 Overall quality at a glance

The following experimental techniques were used to determine the structure:

*X-RAY DIFFRACTION*

The reported resolution of this entry is 2.10 Å.

Percentile scores (ranging between 0-100) for global validation metrics of the entry are shown in the following graphic. The table shows the number of entries on which the scores are based.



Metric	Whole archive (#Entries)	Similar resolution (#Entries, resolution range(Å))
$R_{free}$	130704	5197 (2.10-2.10)
Clashscore	141614	5710 (2.10-2.10)
Ramachandran outliers	138981	5647 (2.10-2.10)
Sidechain outliers	138945	5648 (2.10-2.10)
RSRZ outliers	127900	5083 (2.10-2.10)

The table below summarises the geometric issues observed across the polymeric chains and their fit to the electron density. The red, orange, yellow and green segments on the lower bar indicate the fraction of residues that contain outliers for  $\geq 3$ , 2, 1 and 0 types of geometric quality criteria respectively. A grey segment represents the fraction of residues that are not modelled. The numeric value for each fraction is indicated below the corresponding segment, with a dot representing fractions  $\leq 5\%$ . The upper red bar (where present) indicates the fraction of residues that have poor fit to the electron density. The numeric value is given above the bar.

Mol	Chain	Length	Quality of chain
1	A	166	<div> <div style="width: 87%;"></div> <div style="width: 12%;"></div> <div style="width: 1%;"></div> </div> <div>87% 12% .</div>
1	B	166	<div> <div style="width: 89%;"></div> <div style="width: 11%;"></div> <div style="width: 0%;"></div> </div> <div>89% 11% .</div>
1	C	166	<div> <div style="width: 89%;"></div> <div style="width: 11%;"></div> <div style="width: 0%;"></div> </div> <div>89% 11%</div>
1	D	166	<div> <div style="width: 87%;"></div> <div style="width: 11%;"></div> <div style="width: 2%;"></div> </div> <div>87% 11% .</div>
1	E	166	<div> <div style="width: 86%;"></div> <div style="width: 13%;"></div> <div style="width: 1%;"></div> </div> <div>86% 13% .</div>
1	F	166	<div> <div style="width: 89%;"></div> <div style="width: 10%;"></div> <div style="width: 1%;"></div> </div> <div>89% 10% .</div>

Continued on next page...

Continued from previous page...

Mol	Chain	Length	Quality of chain
1	G	166	<div><div></div><div>88%11%•</div></div>
1	H	166	<div><div>4%</div><div>81%18%•</div></div>

## 2 Entry composition

There are 6 unique types of molecules in this entry. The entry contains 12678 atoms, of which 0 are hydrogens and 0 are deuteriums.

In the tables below, the ZeroOcc column contains the number of atoms modelled with zero occupancy, the AltConf column contains the number of residues with at least one atom in alternate conformation and the Trace column contains the number of residues modelled with at most 2 atoms.

- Molecule 1 is a protein called Dihydrofolate reductase.

Mol	Chain	Residues	Atoms					ZeroOcc	AltConf	Trace
1	A	166	Total	C	N	O	S	0	0	0
			1380	892	228	251	9			
1	B	166	Total	C	N	O	S	0	0	0
			1374	889	225	251	9			
1	C	166	Total	C	N	O	S	0	0	0
			1380	892	228	251	9			
1	D	166	Total	C	N	O	S	0	0	0
			1380	892	228	251	9			
1	E	166	Total	C	N	O	S	0	0	0
			1380	892	228	251	9			
1	F	166	Total	C	N	O	S	0	0	0
			1380	892	228	251	9			
1	G	166	Total	C	N	O	S	0	0	0
			1380	892	228	251	9			
1	H	166	Total	C	N	O	S	0	0	0
			1380	892	228	251	9			

There are 32 discrepancies between the modelled and reference sequences:

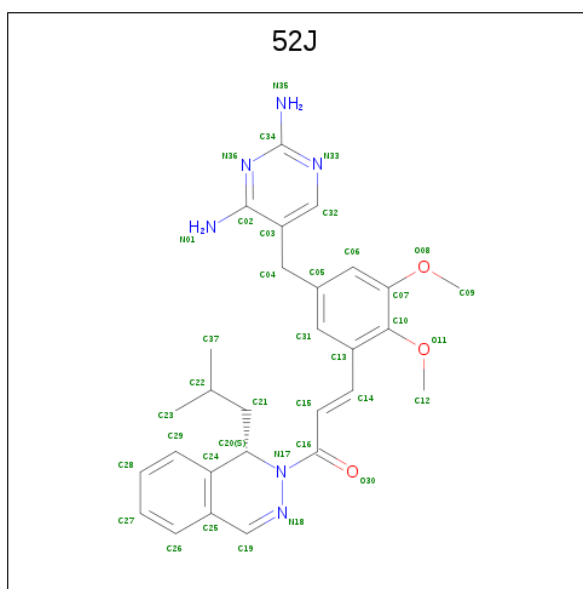
Chain	Residue	Modelled	Actual	Comment	Reference
A	163	LEU	-	EXPRESSION TAG	UNP Q81R22
A	164	VAL	-	EXPRESSION TAG	UNP Q81R22
A	165	PRO	-	EXPRESSION TAG	UNP Q81R22
A	166	ARG	-	EXPRESSION TAG	UNP Q81R22
B	163	LEU	-	EXPRESSION TAG	UNP Q81R22
B	164	VAL	-	EXPRESSION TAG	UNP Q81R22
B	165	PRO	-	EXPRESSION TAG	UNP Q81R22
B	166	ARG	-	EXPRESSION TAG	UNP Q81R22
C	163	LEU	-	EXPRESSION TAG	UNP Q81R22
C	164	VAL	-	EXPRESSION TAG	UNP Q81R22
C	165	PRO	-	EXPRESSION TAG	UNP Q81R22
C	166	ARG	-	EXPRESSION TAG	UNP Q81R22
D	163	LEU	-	EXPRESSION TAG	UNP Q81R22

*Continued on next page...*

Continued from previous page...

Chain	Residue	Modelled	Actual	Comment	Reference
D	164	VAL	-	EXPRESSION TAG	UNP Q81R22
D	165	PRO	-	EXPRESSION TAG	UNP Q81R22
D	166	ARG	-	EXPRESSION TAG	UNP Q81R22
E	163	LEU	-	EXPRESSION TAG	UNP Q81R22
E	164	VAL	-	EXPRESSION TAG	UNP Q81R22
E	165	PRO	-	EXPRESSION TAG	UNP Q81R22
E	166	ARG	-	EXPRESSION TAG	UNP Q81R22
F	163	LEU	-	EXPRESSION TAG	UNP Q81R22
F	164	VAL	-	EXPRESSION TAG	UNP Q81R22
F	165	PRO	-	EXPRESSION TAG	UNP Q81R22
F	166	ARG	-	EXPRESSION TAG	UNP Q81R22
G	163	LEU	-	EXPRESSION TAG	UNP Q81R22
G	164	VAL	-	EXPRESSION TAG	UNP Q81R22
G	165	PRO	-	EXPRESSION TAG	UNP Q81R22
G	166	ARG	-	EXPRESSION TAG	UNP Q81R22
H	163	LEU	-	EXPRESSION TAG	UNP Q81R22
H	164	VAL	-	EXPRESSION TAG	UNP Q81R22
H	165	PRO	-	EXPRESSION TAG	UNP Q81R22
H	166	ARG	-	EXPRESSION TAG	UNP Q81R22

- Molecule 2 is (2E)-3-{5-[(2,4-diaminopyrimidin-5-yl)methyl]-2,3-dimethoxyphenyl}-1-[(1S)-1-(2-methylpropyl)phthalazin-2(1H)-yl]prop-2-en-1-one (three-letter code: 52J) (formula: C<sub>28</sub>H<sub>32</sub>N<sub>6</sub>O<sub>3</sub>).



Mol	Chain	Residues	Atoms				ZeroOcc	AltConf
2	A	1	Total	C	N	O	0	0
			37	28	6	3		

Continued on next page...

*Continued from previous page...*

Mol	Chain	Residues	Atoms				ZeroOcc	AltConf
2	B	1	Total	C	N	O	0	1
			37	28	6	3		
2	C	1	Total	C	N	O	0	0
			37	28	6	3		
2	D	1	Total	C	N	O	0	0
			37	28	6	3		
2	E	1	Total	C	N	O	0	0
			37	28	6	3		
2	F	1	Total	C	N	O	0	0
			37	28	6	3		
2	G	1	Total	C	N	O	0	1
			37	28	6	3		
2	H	1	Total	C	N	O	0	0
			37	28	6	3		

- Molecule 3 is CALCIUM ION (three-letter code: CA) (formula: Ca).

Mol	Chain	Residues	Atoms		ZeroOcc	AltConf
3	G	1	Total	Ca	0	0
			1	1		
3	D	1	Total	Ca	0	0
			1	1		
3	E	1	Total	Ca	0	0
			1	1		
3	H	1	Total	Ca	0	0
			1	1		
3	B	1	Total	Ca	0	0
			1	1		
3	C	1	Total	Ca	0	0
			1	1		
3	A	1	Total	Ca	0	0
			1	1		
3	F	1	Total	Ca	0	0
			1	1		

- Molecule 4 is CHLORIDE ION (three-letter code: CL) (formula: Cl).

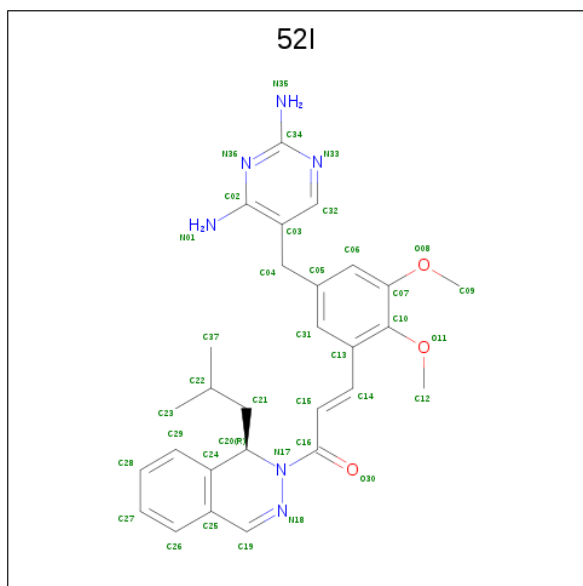
Mol	Chain	Residues	Atoms		ZeroOcc	AltConf
4	G	1	Total	Cl	0	0
			1	1		
4	D	1	Total	Cl	0	0
			1	1		

*Continued on next page...*

Continued from previous page...

Mol	Chain	Residues	Atoms		ZeroOcc	AltConf
4	E	1	Total	Cl	0	0
			1	1		
4	H	1	Total	Cl	0	0
			1	1		
4	B	1	Total	Cl	0	0
			1	1		
4	C	1	Total	Cl	0	0
			1	1		
4	A	1	Total	Cl	0	0
			1	1		
4	F	1	Total	Cl	0	0
			1	1		

- Molecule 5 is (2E)-3-{5-[(2,4-diaminopyrimidin-5-yl)methyl]-2,3-dimethoxyphenyl}-1-[(1R)-1-(2-methylpropyl)phthalazin-2(1H)-yl]prop-2-en-1-one (three-letter code: 52I) (formula: C<sub>28</sub>H<sub>32</sub>N<sub>6</sub>O<sub>3</sub>).



Mol	Chain	Residues	Atoms				ZeroOcc	AltConf
5	B	1	Total	C	N	O	0	1
			37	28	6	3		
5	G	1	Total	C	N	O	0	1
			37	28	6	3		

- Molecule 6 is water.


Mol	Chain	Residues	Atoms		ZeroOcc	AltConf
6	A	179	Total 179	O 179	0	0
6	B	184	Total 184	O 184	0	0
6	C	181	Total 181	O 181	0	0
6	D	140	Total 140	O 140	0	0
6	E	131	Total 131	O 131	0	0
6	F	145	Total 145	O 145	0	0
6	G	166	Total 166	O 166	0	0
6	H	132	Total 132	O 132	0	0



### 3 Residue-property plots [i](#)


These plots are drawn for all protein, RNA and DNA chains in the entry. The first graphic for a chain summarises the proportions of the various outlier classes displayed in the second graphic. The second graphic shows the sequence view annotated by issues in geometry and electron density. Residues are color-coded according to the number of geometric quality criteria for which they contain at least one outlier: green = 0, yellow = 1, orange = 2 and red = 3 or more. A red dot above a residue indicates a poor fit to the electron density ( $RSRZ > 2$ ). Stretches of 2 or more consecutive residues without any outlier are shown as a green connector. Residues present in the sample, but not in the model, are shown in grey.

- Molecule 1: Dihydrofolate reductase

Chain A: 




- Molecule 1: Dihydrofolate reductase

Chain B: 




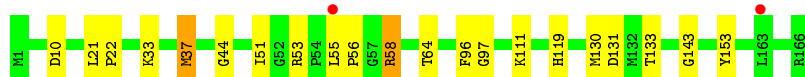
- Molecule 1: Dihydrofolate reductase

Chain C: 




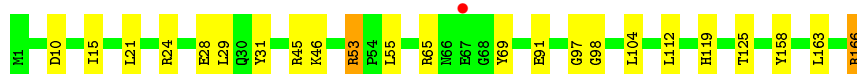
- Molecule 1: Dihydrofolate reductase

Chain D: 




- Molecule 1: Dihydrofolate reductase

Chain E: 




- Molecule 1: Dihydrofolate reductase

Chain F:  89% 10%




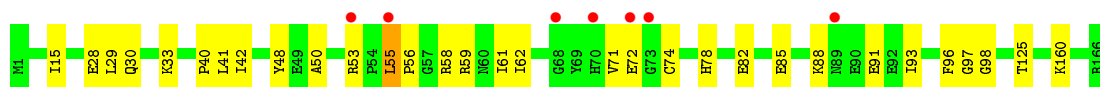
• Molecule 1: Dihydrofolate reductase

Chain G:  88% 11%



• Molecule 1: Dihydrofolate reductase

Chain H:  4% 81% 18%



## 4 Data and refinement statistics

Property	Value	Source
Space group	P 21 21 21	Depositor
Cell constants a, b, c, $\alpha$ , $\beta$ , $\gamma$	68.15Å 135.66Å 168.32Å 90.00° 90.00° 90.00°	Depositor
Resolution (Å)	48.00 – 2.10 48.08 – 2.10	Depositor EDS
% Data completeness (in resolution range)	95.4 (48.00-2.10) 94.8 (48.08-2.10)	Depositor EDS
$R_{merge}$	0.13	Depositor
$R_{sym}$	(Not available)	Depositor
$\langle I/\sigma(I) \rangle$ <sup>1</sup>	2.21 (at 2.10Å)	Xtriage
Refinement program	PHENIX (phenix.refine: 1.7.2_869)	Depositor
R, $R_{free}$	0.194 , 0.256 0.185 , 0.244	Depositor DCC
$R_{free}$ test set	2000 reflections (2.30%)	wwPDB-VP
Wilson B-factor (Å <sup>2</sup> )	30.5	Xtriage
Anisotropy	0.522	Xtriage
Bulk solvent $k_{sol}$ (e/Å <sup>3</sup> ), $B_{sol}$ (Å <sup>2</sup> )	0.28 , 42.6	EDS
L-test for twinning <sup>2</sup>	$\langle  L  \rangle = 0.52$ , $\langle L^2 \rangle = 0.36$	Xtriage
Estimated twinning fraction	No twinning to report.	Xtriage
$F_o, F_c$ correlation	0.96	EDS
Total number of atoms	12678	wwPDB-VP
Average B, all atoms (Å <sup>2</sup> )	38.0	wwPDB-VP

Xtriage's analysis on translational NCS is as follows: *The analyses of the Patterson function reveals a significant off-origin peak that is 24.89 % of the origin peak, indicating pseudo-translational symmetry. The chance of finding a peak of this or larger height randomly in a structure without pseudo-translational symmetry is equal to 3.5185e-03. The detected translational NCS is most likely also responsible for the elevated intensity ratio.*

<sup>1</sup>Intensities estimated from amplitudes.

<sup>2</sup>Theoretical values of  $\langle |L| \rangle$ ,  $\langle L^2 \rangle$  for acentric reflections are 0.5, 0.333 respectively for untwinned datasets, and 0.375, 0.2 for perfectly twinned datasets.

## 5 Model quality

### 5.1 Standard geometry

Bond lengths and bond angles in the following residue types are not validated in this section: CA, 52I, 52J, CL

The Z score for a bond length (or angle) is the number of standard deviations the observed value is removed from the expected value. A bond length (or angle) with  $|Z| > 5$  is considered an outlier worth inspection. RMSZ is the root-mean-square of all Z scores of the bond lengths (or angles).

Mol	Chain	Bond lengths		Bond angles	
		RMSZ	# Z  >5	RMSZ	# Z  >5
1	A	0.44	0/1418	0.55	1/1918 (0.1%)
1	B	0.48	0/1412	0.59	0/1911
1	C	0.44	0/1418	0.57	1/1918 (0.1%)
1	D	0.41	0/1418	0.54	0/1918
1	E	0.41	0/1418	0.55	1/1918 (0.1%)
1	F	0.43	0/1418	0.56	1/1918 (0.1%)
1	G	0.45	0/1418	0.56	0/1918
1	H	0.43	0/1418	0.55	0/1918
All	All	0.44	0/11338	0.56	4/15337 (0.0%)

Chiral center outliers are detected by calculating the chiral volume of a chiral center and verifying if the center is modelled as a planar moiety or with the opposite hand. A planarity outlier is detected by checking planarity of atoms in a peptide group, atoms in a mainchain group or atoms of a sidechain that are expected to be planar.

Mol	Chain	#Chirality outliers	#Planarity outliers
1	A	0	1
1	B	0	1
1	C	0	1
1	D	0	1
1	E	0	1
1	F	0	1
1	G	0	1
1	H	0	1
All	All	0	8

There are no bond length outliers.

All (4) bond angle outliers are listed below:

Mol	Chain	Res	Type	Atoms	Z	Observed(°)	Ideal(°)
1	E	98	GLY	N-CA-C	-6.11	97.82	113.10
1	A	98	GLY	N-CA-C	-5.66	98.95	113.10
1	F	98	GLY	N-CA-C	-5.38	99.65	113.10
1	C	98	GLY	N-CA-C	-5.07	100.43	113.10

There are no chirality outliers.

All (8) planarity outliers are listed below:

Mol	Chain	Res	Type	Group
1	A	97	GLY	Peptide
1	B	97	GLY	Peptide
1	C	97	GLY	Peptide
1	D	97	GLY	Peptide
1	E	97	GLY	Peptide
1	F	97	GLY	Peptide
1	G	97	GLY	Peptide
1	H	97	GLY	Peptide

## 5.2 Too-close contacts

In the following table, the Non-H and H(model) columns list the number of non-hydrogen atoms and hydrogen atoms in the chain respectively. The H(added) column lists the number of hydrogen atoms added and optimized by MolProbity. The Clashes column lists the number of clashes within the asymmetric unit, whereas Symm-Clashes lists symmetry related clashes.

Mol	Chain	Non-H	H(model)	H(added)	Clashes	Symm-Clashes
1	A	1380	0	1346	12	0
1	B	1374	0	1335	19	0
1	C	1380	0	1346	11	0
1	D	1380	0	1346	16	0
1	E	1380	0	1346	18	0
1	F	1380	0	1346	17	0
1	G	1380	0	1346	19	0
1	H	1380	0	1346	20	0
2	A	37	0	32	8	0
2	B	37	0	32	12	0
2	C	37	0	32	4	0
2	D	37	0	32	14	0
2	E	37	0	32	12	0
2	F	37	0	32	11	0
2	G	37	0	32	9	0
2	H	37	0	32	9	0

*Continued on next page...*

*Continued from previous page...*

Mol	Chain	Non-H	H(model)	H(added)	Clashes	Symm-Clashes
3	A	1	0	0	0	0
3	B	1	0	0	0	0
3	C	1	0	0	0	0
3	D	1	0	0	0	0
3	E	1	0	0	0	0
3	F	1	0	0	0	0
3	G	1	0	0	0	0
3	H	1	0	0	0	0
4	A	1	0	0	0	0
4	B	1	0	0	1	0
4	C	1	0	0	1	0
4	D	1	0	0	1	0
4	E	1	0	0	0	0
4	F	1	0	0	1	0
4	G	1	0	0	1	0
4	H	1	0	0	1	0
5	B	37	0	32	2	0
5	G	37	0	32	9	0
6	A	179	0	0	3	0
6	B	184	0	0	1	0
6	C	181	0	0	2	0
6	D	140	0	0	2	0
6	E	131	0	0	3	0
6	F	145	0	0	4	0
6	G	166	0	0	2	0
6	H	132	0	0	3	0
All	All	12678	0	11077	174	0

The all-atom clashscore is defined as the number of clashes found per 1000 atoms (including hydrogen atoms). The all-atom clashscore for this structure is 8.

All (174) close contacts within the same asymmetric unit are listed below, sorted by their clash magnitude.

Atom-1	Atom-2	Interatomic distance (Å)	Clash overlap (Å)
1:E:55:LEU:HD13	2:E:201:52J:C19	1.84	1.07
2:B:201[A]:52J:H10	2:B:201[A]:52J:H16	1.35	1.06
2:B:201[A]:52J:H10	2:B:201[A]:52J:C14	1.93	0.97
2:B:201[A]:52J:C12	2:B:201[A]:52J:C14	2.42	0.96
1:B:55:LEU:HD23	2:B:201[A]:52J:C19	1.98	0.93
2:D:201:52J:H16	2:D:201:52J:N18	1.83	0.93
2:G:201[A]:52J:H16	2:G:201[A]:52J:H10	1.53	0.90

*Continued on next page...*

*Continued from previous page...*

Atom-1	Atom-2	Interatomic distance (Å)	Clash overlap (Å)
1:D:21:LEU:HG	2:D:201:52J:H7	1.54	0.89
1:G:55:LEU:HD13	2:G:201[A]:52J:C19	2.04	0.87
1:E:55:LEU:HD13	2:E:201:52J:H19	1.61	0.82
1:F:166:ARG:NH1	6:F:429:HOH:O	2.14	0.79
2:D:201:52J:H17	2:D:201:52J:O11	1.85	0.77
1:B:29:LEU:HD22	2:B:201[A]:52J:H17	1.67	0.75
1:F:55:LEU:HD13	2:F:201:52J:C19	2.17	0.74
5:G:204[B]:52I:H13	5:G:204[B]:52I:C31	2.16	0.73
1:B:55:LEU:HD23	2:B:201[A]:52J:C25	2.17	0.73
2:G:201[A]:52J:C29	2:G:201[A]:52J:H24	2.21	0.71
2:G:201[A]:52J:H31	2:G:201[A]:52J:H24	1.72	0.71
1:G:20:ASN:OD1	6:G:465:HOH:O	2.11	0.69
2:D:201:52J:O08	2:D:201:52J:H11	1.94	0.68
1:E:55:LEU:HB3	2:E:201:52J:C26	2.24	0.68
1:D:96:PHE:CZ	2:D:201:52J:H12	2.29	0.67
1:D:56:PRO:O	1:D:58:ARG:NH1	2.28	0.67
1:H:55:LEU:HD22	2:H:201:52J:C19	2.25	0.66
2:H:201:52J:C31	2:H:201:52J:H13	2.27	0.65
1:H:33:LYS:O	1:H:58:ARG:NH2	2.28	0.65
5:G:204[B]:52I:O08	5:G:204[B]:52I:H2	1.96	0.65
1:E:69:TYR:OH	6:E:406:HOH:O	2.10	0.64
1:B:51:ILE:HG21	1:B:55:LEU:HD11	1.79	0.64
1:C:20:ASN:ND2	6:C:478:HOH:O	2.31	0.64
1:A:55:LEU:HD13	2:A:201:52J:C19	2.28	0.63
2:E:201:52J:C31	2:E:201:52J:H13	2.29	0.62
2:F:201:52J:N18	2:F:201:52J:H16	2.13	0.62
2:A:201:52J:H31	2:A:201:52J:H24	1.83	0.60
1:F:13:ARG:NH2	6:F:344:HOH:O	2.33	0.60
5:G:204[B]:52I:O08	5:G:204[B]:52I:C12	2.49	0.60
1:B:33:LYS:HB2	5:B:204[B]:52I:H20	1.84	0.60
1:C:53:ARG:NH1	6:C:382:HOH:O	2.32	0.60
2:G:201[A]:52J:C14	2:G:201[A]:52J:H10	2.30	0.60
5:G:204[B]:52I:C31	5:G:204[B]:52I:C32	2.77	0.60
2:G:201[A]:52J:C31	2:G:201[A]:52J:H13	2.31	0.60
2:B:201[A]:52J:H11	2:B:201[A]:52J:C14	2.32	0.59
1:E:15:ILE:HG13	1:E:125:THR:HG23	1.85	0.58
1:A:56:PRO:O	1:A:58:ARG:NH1	2.37	0.58
2:H:201:52J:C31	2:H:201:52J:C32	2.82	0.57
2:A:201:52J:C29	2:A:201:52J:H24	2.34	0.57
1:H:55:LEU:HB3	2:H:201:52J:C26	2.34	0.56
1:B:56:PRO:O	1:B:58:ARG:NH1	2.39	0.56

*Continued on next page...*

*Continued from previous page...*

Atom-1	Atom-2	Interatomic distance (Å)	Clash overlap (Å)
1:E:65:ARG:NH2	6:E:405:HOH:O	2.39	0.56
1:D:44:GLY:HA3	4:D:203:CL:CL	2.43	0.56
1:D:10:ASP:HB2	1:D:119:HIS:O	2.06	0.55
1:E:29:LEU:HD22	2:E:201:52J:C14	2.37	0.55
1:B:77:ALA:HB1	1:B:82:GLU:HB3	1.87	0.55
1:B:58:ARG:CZ	2:B:201[A]:52J:H29	2.37	0.55
1:F:55:LEU:HD13	2:F:201:52J:H19	1.86	0.55
1:E:53:ARG:HH22	2:E:201:52J:H21	1.72	0.55
2:F:201:52J:H17	2:F:201:52J:O11	2.07	0.55
1:F:58:ARG:NE	2:F:201:52J:H29	2.22	0.54
2:F:201:52J:O08	2:F:201:52J:H11	2.07	0.54
5:B:204[B]:52I:C31	5:B:204[B]:52I:H13	2.36	0.54
1:G:33:LYS:O	1:G:58:ARG:NH2	2.35	0.54
1:D:131:ASP:OD1	1:D:133:THR:OG1	2.22	0.54
2:D:201:52J:O08	2:D:201:52J:C12	2.56	0.54
2:A:201:52J:C31	2:A:201:52J:H13	2.37	0.54
1:B:55:LEU:CD2	2:B:201[A]:52J:C19	2.80	0.54
2:E:201:52J:C32	2:E:201:52J:C31	2.86	0.54
2:C:201:52J:C31	2:C:201:52J:H13	2.38	0.53
1:H:50:ALA:O	6:H:324:HOH:O	2.18	0.53
1:H:30:GLN:HG2	6:H:422:HOH:O	2.08	0.53
1:E:21:LEU:HG	2:E:201:52J:H7	1.89	0.53
1:B:162:GLN:HG2	1:E:104:LEU:HD23	1.89	0.53
1:G:55:LEU:HD22	5:G:204[B]:52I:H25	1.91	0.53
1:G:55:LEU:HD13	2:G:201[A]:52J:C25	2.39	0.52
2:H:201:52J:C29	2:H:201:52J:H24	2.39	0.52
1:F:58:ARG:CD	2:F:201:52J:H29	2.40	0.52
1:D:96:PHE:HZ	2:D:201:52J:H12	1.71	0.51
2:A:201:52J:C31	2:A:201:52J:C32	2.88	0.51
2:F:201:52J:C14	2:F:201:52J:N18	2.73	0.51
1:A:111:LYS:NZ	6:A:373:HOH:O	2.44	0.51
1:B:37:MET:HG3	6:B:475:HOH:O	2.09	0.51
1:C:41:LEU:HD13	1:C:55:LEU:HD12	1.93	0.51
1:G:112:LEU:HB2	1:G:158:TYR:HB2	1.93	0.50
2:H:201:52J:H31	2:H:201:52J:H24	1.92	0.50
1:B:30:GLN:OE1	2:B:201[A]:52J:H33	2.12	0.50
1:H:29:LEU:HD22	2:H:201:52J:C14	2.42	0.49
1:D:55:LEU:HD13	2:D:201:52J:C19	2.42	0.49
2:G:201[A]:52J:C31	2:G:201[A]:52J:C32	2.89	0.49
1:G:55:LEU:HB3	2:G:201[A]:52J:C26	2.42	0.49
2:A:201:52J:H10	2:A:201:52J:H16	1.94	0.49

*Continued on next page...*



*Continued from previous page...*

Atom-1	Atom-2	Interatomic distance (Å)	Clash overlap (Å)
1:H:41:LEU:HD22	1:H:96:PHE:HB2	1.94	0.49
1:D:111:LYS:NZ	6:D:320:HOH:O	2.42	0.49
1:A:10:ASP:HB2	1:A:119:HIS:O	2.12	0.49
1:B:85:GLU:OE2	1:B:88:LYS:NZ	2.46	0.49
2:C:201:52J:C31	2:C:201:52J:C32	2.91	0.49
1:D:51:ILE:HG21	1:D:55:LEU:HD21	1.95	0.49
1:F:21:LEU:HG	2:F:201:52J:H7	1.94	0.48
1:G:29:LEU:CD2	5:G:204[B]:52I:H16	2.44	0.48
1:C:17:LYS:HB2	1:C:123:GLY:HA2	1.95	0.48
2:D:201:52J:C14	2:D:201:52J:N18	2.57	0.47
1:H:15:ILE:HG13	1:H:125:THR:HG23	1.96	0.47
1:H:42:ILE:HG13	1:H:61:ILE:HB	1.97	0.47
2:E:201:52J:H24	2:E:201:52J:C29	2.45	0.47
1:A:21:LEU:HG	2:A:201:52J:H7	1.95	0.47
1:C:29:LEU:HD13	2:C:201:52J:H16	1.97	0.47
1:H:78:HIS:ND1	1:H:82:GLU:OE1	2.36	0.47
1:B:96:PHE:CZ	2:B:201[A]:52J:H12	2.50	0.47
1:E:28:GLU:OE2	2:E:201:52J:N35	2.41	0.46
1:H:85:GLU:HG2	1:H:88:LYS:NZ	2.30	0.46
5:G:204[B]:52I:H12	5:G:204[B]:52I:C32	2.46	0.46
1:E:46:LYS:NZ	6:E:418:HOH:O	2.42	0.46
1:G:143:GLY:HA3	1:G:153:TYR:CE1	2.52	0.45
1:F:96:PHE:CZ	2:F:201:52J:H12	2.52	0.45
1:A:71:VAL:HG22	1:A:74:CYS:HB2	1.98	0.45
1:B:10:ASP:HB2	1:B:119:HIS:O	2.17	0.45
1:D:143:GLY:HA3	1:D:153:TYR:CE1	2.51	0.45
2:E:201:52J:H24	2:E:201:52J:H31	1.98	0.45
1:H:71:VAL:HB	1:H:74:CYS:HB2	1.99	0.45
1:H:160:LYS:HG3	6:H:381:HOH:O	2.16	0.45
1:E:10:ASP:HB2	1:E:119:HIS:O	2.17	0.45
1:E:28:GLU:O	1:E:31:TYR:HB3	2.17	0.45
1:F:21:LEU:HA	1:F:22:PRO:HD3	1.85	0.44
1:H:28:GLU:OE2	2:H:201:52J:N35	2.37	0.44
1:F:11:GLU:HG2	6:F:334:HOH:O	2.16	0.44
1:G:10:ASP:HB2	1:G:119:HIS:O	2.17	0.44
1:C:2:ILE:HB	1:C:92:GLU:HG3	1.98	0.44
1:A:162:GLN:H	1:A:162:GLN:CD	2.21	0.44
1:F:122:GLU:HG2	6:F:370:HOH:O	2.18	0.44
1:G:33:LYS:HB2	5:G:204[B]:52I:H20	1.99	0.44
1:E:55:LEU:HD13	2:E:201:52J:C25	2.45	0.43
1:H:40:PRO:HB3	1:H:59:ARG:HB3	2.00	0.43

*Continued on next page...*

*Continued from previous page...*

Atom-1	Atom-2	Interatomic distance (Å)	Clash overlap (Å)
1:A:20:ASN:ND2	6:A:320:HOH:O	2.31	0.43
1:A:28:GLU:O	1:A:31:TYR:HB3	2.18	0.43
1:F:98:GLY:HA3	4:F:203:CL:CL	2.55	0.43
1:E:45:ARG:HG3	1:E:69:TYR:CZ	2.53	0.43
1:A:58:ARG:NH1	2:A:201:52J:H29	2.33	0.43
1:A:61:ILE:HG12	1:A:75:GLU:HB2	2.01	0.43
1:D:21:LEU:HA	1:D:22:PRO:HD3	1.87	0.43
1:G:29:LEU:HD22	5:G:204[B]:52I:C14	2.49	0.43
2:D:201:52J:C32	2:D:201:52J:C31	2.95	0.43
1:F:10:ASP:HB2	1:F:119:HIS:O	2.19	0.43
1:G:56:PRO:O	1:G:58:ARG:NH1	2.51	0.43
1:G:55:LEU:HA	1:G:56:PRO:HD3	1.86	0.43
1:H:48:TYR:OH	1:H:71:VAL:HG11	2.19	0.43
1:B:98:GLY:HA3	4:B:203:CL:CL	2.56	0.42
1:H:40:PRO:HG2	1:H:93:ILE:HG22	2.01	0.42
1:C:127:PHE:CD1	1:C:128:PRO:HD2	2.54	0.42
1:B:29:LEU:HD22	2:B:201[A]:52J:C15	2.45	0.42
2:D:201:52J:O11	2:D:201:52J:C15	2.59	0.42
1:F:43:MET:O	1:F:62:ILE:HA	2.19	0.42
1:G:98:GLY:HA3	4:G:203:CL:CL	2.57	0.42
1:G:88:LYS:NZ	6:G:446:HOH:O	2.44	0.42
1:D:33:LYS:HD2	2:D:201:52J:C29	2.50	0.42
1:D:130:MET:N	6:D:416:HOH:O	2.44	0.41
1:E:166:ARG:HG3	1:E:166:ARG:H	1.63	0.41
1:C:55:LEU:HA	1:C:56:PRO:HD3	1.87	0.41
2:H:201:52J:H12	2:H:201:52J:C32	2.50	0.41
2:F:201:52J:C15	2:F:201:52J:O11	2.67	0.41
1:G:53:ARG:HB2	1:G:53:ARG:HE	1.74	0.41
2:D:201:52J:H24	2:D:201:52J:H31	2.02	0.41
1:B:65:ARG:HB2	1:F:164:VAL:O	2.21	0.41
1:F:108:TYR:HB3	1:G:147:GLU:OE2	2.21	0.41
1:H:56:PRO:O	1:H:58:ARG:NH1	2.53	0.41
1:H:98:GLY:HA3	4:H:202:CL:CL	2.58	0.41
1:A:122:GLU:HG2	6:A:443:HOH:O	2.21	0.41
1:C:8:ALA:HA	1:C:115:THR:HB	2.03	0.41
1:D:58:ARG:CD	2:D:201:52J:H29	2.51	0.41
1:C:44:GLY:HA3	4:C:203:CL:CL	2.57	0.40
1:F:37:MET:HE2	1:F:37:MET:HB3	1.96	0.40
1:G:21:LEU:HA	1:G:22:PRO:HD3	1.93	0.40
1:C:55:LEU:HD13	2:C:201:52J:C19	2.52	0.40
1:D:37:MET:O	1:D:37:MET:HG3	2.22	0.40

*Continued on next page...*

*Continued from previous page...*

Atom-1	Atom-2	Interatomic distance (Å)	Clash overlap (Å)
1:E:112:LEU:HB2	1:E:158:TYR:HB2	2.04	0.40
1:B:88:LYS:HB2	1:B:88:LYS:HE2	1.96	0.40
1:H:62:ILE:HD11	1:H:74:CYS:SG	2.62	0.40

There are no symmetry-related clashes.

## 5.3 Torsion angles [i](#)

### 5.3.1 Protein backbone [i](#)

In the following table, the Percentiles column shows the percent Ramachandran outliers of the chain as a percentile score with respect to all X-ray entries followed by that with respect to entries of similar resolution.

The Analysed column shows the number of residues for which the backbone conformation was analysed, and the total number of residues.

Mol	Chain	Analysed	Favoured	Allowed	Outliers	Percentiles	
1	A	164/166 (99%)	163 (99%)	1 (1%)	0	100	100
1	B	164/166 (99%)	160 (98%)	4 (2%)	0	100	100
1	C	164/166 (99%)	160 (98%)	4 (2%)	0	100	100
1	D	164/166 (99%)	162 (99%)	2 (1%)	0	100	100
1	E	164/166 (99%)	159 (97%)	5 (3%)	0	100	100
1	F	164/166 (99%)	158 (96%)	6 (4%)	0	100	100
1	G	164/166 (99%)	162 (99%)	2 (1%)	0	100	100
1	H	164/166 (99%)	156 (95%)	8 (5%)	0	100	100
All	All	1312/1328 (99%)	1280 (98%)	32 (2%)	0	100	100

There are no Ramachandran outliers to report.

### 5.3.2 Protein sidechains [i](#)

In the following table, the Percentiles column shows the percent sidechain outliers of the chain as a percentile score with respect to all X-ray entries followed by that with respect to entries of similar resolution.

The Analysed column shows the number of residues for which the sidechain conformation was analysed, and the total number of residues.

Mol	Chain	Analysed	Rotameric	Outliers	Percentiles	
1	A	150/150 (100%)	146 (97%)	4 (3%)	44	48
1	B	149/150 (99%)	148 (99%)	1 (1%)	84	88
1	C	150/150 (100%)	148 (99%)	2 (1%)	69	75
1	D	150/150 (100%)	146 (97%)	4 (3%)	44	48
1	E	150/150 (100%)	145 (97%)	5 (3%)	38	40
1	F	150/150 (100%)	148 (99%)	2 (1%)	69	75
1	G	150/150 (100%)	148 (99%)	2 (1%)	69	75
1	H	150/150 (100%)	146 (97%)	4 (3%)	44	48
All	All	1199/1200 (100%)	1175 (98%)	24 (2%)	55	60

All (24) residues with a non-rotameric sidechain are listed below:

Mol	Chain	Res	Type
1	A	53	ARG
1	A	58	ARG
1	A	64	THR
1	A	81	GLU
1	B	37	MET
1	C	106	LEU
1	C	166	ARG
1	D	37	MET
1	D	53	ARG
1	D	58	ARG
1	D	64	THR
1	E	24	ARG
1	E	53	ARG
1	E	91	GLU
1	E	163	LEU
1	E	166	ARG
1	F	37	MET
1	F	53	ARG
1	G	53	ARG
1	G	122	GLU
1	H	53	ARG
1	H	55	LEU
1	H	72	GLU
1	H	91	GLU

Some sidechains can be flipped to improve hydrogen bonding and reduce clashes. All (2) such sidechains are listed below:

Mol	Chain	Res	Type
1	B	100	GLN
1	D	119	HIS

### 5.3.3 RNA ⓘ

There are no RNA molecules in this entry.

## 5.4 Non-standard residues in protein, DNA, RNA chains ⓘ

There are no non-standard protein/DNA/RNA residues in this entry.

## 5.5 Carbohydrates ⓘ

There are no carbohydrates in this entry.

## 5.6 Ligand geometry ⓘ

Of 26 ligands modelled in this entry, 16 are monoatomic - leaving 10 for Mogul analysis.

In the following table, the Counts columns list the number of bonds (or angles) for which Mogul statistics could be retrieved, the number of bonds (or angles) that are observed in the model and the number of bonds (or angles) that are defined in the Chemical Component Dictionary. The Link column lists molecule types, if any, to which the group is linked. The Z score for a bond length (or angle) is the number of standard deviations the observed value is removed from the expected value. A bond length (or angle) with  $|Z| > 2$  is considered an outlier worth inspection. RMSZ is the root-mean-square of all Z scores of the bond lengths (or angles).

Mol	Type	Chain	Res	Link	Bond lengths			Bond angles		
					Counts	RMSZ	$\# Z  > 2$	Counts	RMSZ	$\# Z  > 2$
2	52J	D	201	-	40,40,40	3.00	12 (30%)	50,56,56	2.04	15 (30%)
2	52J	G	201[A]	-	40,40,40	2.99	12 (30%)	50,56,56	2.06	14 (28%)
2	52J	B	201[A]	-	40,40,40	2.98	12 (30%)	50,56,56	2.10	15 (30%)
2	52J	A	201	-	40,40,40	3.01	12 (30%)	50,56,56	2.04	15 (30%)
2	52J	C	201	-	40,40,40	3.00	12 (30%)	50,56,56	2.03	15 (30%)
2	52J	E	201	-	40,40,40	2.98	12 (30%)	50,56,56	2.03	15 (30%)
5	52I	B	204[B]	-	40,40,40	2.83	10 (25%)	50,56,56	2.22	12 (24%)
5	52I	G	204[B]	-	40,40,40	2.82	10 (25%)	50,56,56	2.17	14 (28%)
2	52J	H	201	-	40,40,40	3.00	12 (30%)	50,56,56	2.03	15 (30%)
2	52J	F	201	-	40,40,40	3.00	12 (30%)	50,56,56	2.06	14 (28%)

In the following table, the Chirals column lists the number of chiral outliers, the number of chiral centers analysed, the number of these observed in the model and the number defined in the Chemical Component Dictionary. Similar counts are reported in the Torsion and Rings columns. '-' means no outliers of that kind were identified.

Mol	Type	Chain	Res	Link	Chirals	Torsions	Rings
2	52J	D	201	-	-	5/20/34/34	0/3/4/4
2	52J	G	201[A]	-	-	2/20/34/34	0/3/4/4
2	52J	B	201[A]	-	-	8/20/34/34	0/3/4/4
2	52J	A	201	-	-	4/20/34/34	0/3/4/4
2	52J	C	201	-	-	2/20/34/34	0/3/4/4
2	52J	E	201	-	-	3/20/34/34	0/3/4/4
5	52I	B	204[B]	-	-	4/20/34/34	0/3/4/4
5	52I	G	204[B]	-	-	11/20/34/34	0/3/4/4
2	52J	H	201	-	-	3/20/34/34	0/3/4/4
2	52J	F	201	-	-	10/20/34/34	0/3/4/4

All (116) bond length outliers are listed below:

Mol	Chain	Res	Type	Atoms	Z	Observed(Å)	Ideal(Å)
2	D	201	52J	C19-N18	12.32	1.44	1.29
2	A	201	52J	C19-N18	12.32	1.44	1.29
2	H	201	52J	C19-N18	12.31	1.44	1.29
2	F	201	52J	C19-N18	12.30	1.44	1.29
2	C	201	52J	C19-N18	12.29	1.44	1.29
2	G	201[A]	52J	C19-N18	12.22	1.43	1.29
2	E	201	52J	C19-N18	12.20	1.43	1.29
2	B	201[A]	52J	C19-N18	12.20	1.43	1.29
5	B	204[B]	52I	C19-N18	12.19	1.43	1.29
5	G	204[B]	52I	C19-N18	12.10	1.43	1.29
2	F	201	52J	C02-N01	6.66	1.50	1.34
2	D	201	52J	C02-N01	6.65	1.50	1.34
2	A	201	52J	C02-N01	6.65	1.50	1.34
2	E	201	52J	C02-N01	6.64	1.50	1.34
2	C	201	52J	C02-N01	6.64	1.50	1.34
2	G	201[A]	52J	C02-N01	6.63	1.50	1.34
2	B	201[A]	52J	C02-N01	6.61	1.50	1.34
2	H	201	52J	C02-N01	6.59	1.50	1.34
5	G	204[B]	52I	C34-N35	6.31	1.46	1.33
5	B	204[B]	52I	C34-N35	6.29	1.46	1.33
2	F	201	52J	C13-C14	5.79	1.56	1.47
2	B	201[A]	52J	C13-C14	5.78	1.56	1.47

*Continued on next page...*

*Continued from previous page...*

Mol	Chain	Res	Type	Atoms	Z	Observed(Å)	Ideal(Å)
2	A	201	52J	C13-C14	5.75	1.56	1.47
2	C	201	52J	C13-C14	5.74	1.56	1.47
2	D	201	52J	C13-C14	5.72	1.56	1.47
2	E	201	52J	C13-C14	5.70	1.56	1.47
2	G	201[A]	52J	C13-C14	5.69	1.56	1.47
2	H	201	52J	C13-C14	5.67	1.56	1.47
5	B	204[B]	52I	C16-N17	5.59	1.46	1.36
5	G	204[B]	52I	C16-N17	5.53	1.46	1.36
2	D	201	52J	C34-N35	5.32	1.44	1.33
2	A	201	52J	C34-N35	5.32	1.44	1.33
2	B	201[A]	52J	C34-N35	5.31	1.44	1.33
2	C	201	52J	C34-N35	5.30	1.44	1.33
2	H	201	52J	C34-N35	5.30	1.44	1.33
2	F	201	52J	C34-N35	5.28	1.44	1.33
2	G	201[A]	52J	C34-N35	5.28	1.44	1.33
2	E	201	52J	C34-N35	5.27	1.44	1.33
5	G	204[B]	52I	C02-N01	4.24	1.44	1.34
5	B	204[B]	52I	C02-N01	4.24	1.44	1.34
2	A	201	52J	C16-N17	4.01	1.43	1.36
2	C	201	52J	C16-N17	4.00	1.43	1.36
2	H	201	52J	C16-N17	3.99	1.43	1.36
2	G	201[A]	52J	C16-N17	3.98	1.43	1.36
2	F	201	52J	C16-N17	3.97	1.43	1.36
2	B	201[A]	52J	C16-N17	3.96	1.43	1.36
2	D	201	52J	C16-N17	3.95	1.43	1.36
2	E	201	52J	C16-N17	3.93	1.43	1.36
5	G	204[B]	52I	C13-C14	3.85	1.53	1.47
5	B	204[B]	52I	C13-C14	3.84	1.53	1.47
5	G	204[B]	52I	C15-C16	3.54	1.54	1.48
5	B	204[B]	52I	C15-C16	3.52	1.53	1.48
2	D	201	52J	C32-C03	3.48	1.45	1.37
2	C	201	52J	C32-C03	3.48	1.45	1.37
2	B	201[A]	52J	C32-C03	3.47	1.45	1.37
2	A	201	52J	C32-C03	3.47	1.45	1.37
2	G	201[A]	52J	C32-C03	3.46	1.45	1.37
2	F	201	52J	C32-C03	3.46	1.44	1.37
2	H	201	52J	C32-C03	3.45	1.44	1.37
2	E	201	52J	C32-C03	3.44	1.44	1.37
2	H	201	52J	C20-N17	-3.32	1.43	1.46
2	C	201	52J	C20-N17	-3.29	1.43	1.46
2	G	201[A]	52J	C20-N17	-3.24	1.43	1.46
2	E	201	52J	C20-N17	-3.22	1.43	1.46

*Continued on next page...*

*Continued from previous page...*

Mol	Chain	Res	Type	Atoms	Z	Observed(Å)	Ideal(Å)
2	A	201	52J	C20-N17	-3.21	1.43	1.46
2	D	201	52J	C20-N17	-3.20	1.43	1.46
2	F	201	52J	C20-N17	-3.14	1.43	1.46
2	H	201	52J	C15-C14	3.11	1.41	1.33
2	B	201[A]	52J	C15-C14	3.11	1.41	1.33
2	A	201	52J	C15-C14	3.11	1.41	1.33
2	D	201	52J	C15-C14	3.11	1.41	1.33
2	B	201[A]	52J	C20-N17	-3.09	1.43	1.46
2	C	201	52J	C15-C14	3.09	1.41	1.33
2	F	201	52J	C15-C14	3.09	1.41	1.33
5	G	204[B]	52I	C20-N17	-3.07	1.43	1.46
2	E	201	52J	C15-C14	3.07	1.41	1.33
2	G	201[A]	52J	C15-C14	3.07	1.41	1.33
5	B	204[B]	52I	C15-C14	3.05	1.41	1.33
5	G	204[B]	52I	C15-C14	3.00	1.40	1.33
2	C	201	52J	C06-C05	2.83	1.44	1.39
2	H	201	52J	C06-C05	2.82	1.44	1.39
2	D	201	52J	C06-C05	2.82	1.44	1.39
2	F	201	52J	C06-C05	2.80	1.44	1.39
2	B	201[A]	52J	C06-C05	2.77	1.44	1.39
2	E	201	52J	C06-C05	2.77	1.44	1.39
2	G	201[A]	52J	C06-C05	2.77	1.44	1.39
2	A	201	52J	C06-C05	2.75	1.44	1.39
5	B	204[B]	52I	C25-C24	-2.66	1.37	1.40
5	B	204[B]	52I	C20-N17	-2.52	1.44	1.46
2	H	201	52J	C28-C29	2.35	1.43	1.38
2	B	201[A]	52J	C28-C29	2.35	1.43	1.38
2	C	201	52J	C28-C29	2.32	1.43	1.38
2	D	201	52J	C28-C29	2.32	1.43	1.38
2	A	201	52J	C28-C29	2.31	1.43	1.38
2	F	201	52J	C28-C29	2.30	1.43	1.38
2	G	201[A]	52J	C28-C29	2.30	1.43	1.38
2	E	201	52J	C28-C29	2.29	1.43	1.38
2	A	201	52J	C31-C13	2.20	1.44	1.40
2	E	201	52J	C31-C13	2.16	1.44	1.40
2	C	201	52J	C31-C13	2.16	1.44	1.40
2	C	201	52J	C25-C24	-2.15	1.38	1.40
2	D	201	52J	C25-C24	-2.14	1.38	1.40
2	G	201[A]	52J	C31-C13	2.14	1.44	1.40
2	B	201[A]	52J	C31-C13	2.13	1.44	1.40
2	H	201	52J	C31-C13	2.12	1.44	1.40
2	E	201	52J	C25-C24	-2.11	1.38	1.40

*Continued on next page...*



*Continued from previous page...*

Mol	Chain	Res	Type	Atoms	Z	Observed(Å)	Ideal(Å)
2	F	201	52J	C31-C13	2.10	1.44	1.40
5	G	204[B]	52I	C29-C24	2.10	1.42	1.39
2	F	201	52J	C25-C24	-2.09	1.38	1.40
2	D	201	52J	C31-C13	2.08	1.44	1.40
2	B	201[A]	52J	C25-C24	-2.08	1.38	1.40
2	A	201	52J	C25-C24	-2.08	1.38	1.40
5	G	204[B]	52I	C25-C19	2.07	1.50	1.44
2	G	201[A]	52J	C25-C24	-2.05	1.38	1.40
2	H	201	52J	C25-C24	-2.02	1.38	1.40
5	B	204[B]	52I	C29-C24	2.00	1.42	1.39

All (144) bond angle outliers are listed below:

Mol	Chain	Res	Type	Atoms	Z	Observed(°)	Ideal(°)
5	B	204[B]	52I	C25-C19-N18	-10.09	112.48	125.88
2	B	201[A]	52J	C25-C19-N18	-9.35	113.47	125.88
2	G	201[A]	52J	C25-C19-N18	-8.97	113.97	125.88
2	F	201	52J	C25-C19-N18	-8.75	114.26	125.88
5	G	204[B]	52I	C25-C19-N18	-8.72	114.30	125.88
2	A	201	52J	C25-C19-N18	-8.64	114.40	125.88
2	E	201	52J	C25-C19-N18	-8.61	114.45	125.88
2	C	201	52J	C25-C19-N18	-8.59	114.47	125.88
2	H	201	52J	C25-C19-N18	-8.58	114.48	125.88
2	D	201	52J	C25-C19-N18	-8.55	114.53	125.88
5	G	204[B]	52I	N33-C34-N36	-4.60	120.10	125.70
5	B	204[B]	52I	N33-C34-N36	-4.60	120.11	125.70
2	H	201	52J	C24-C25-C19	3.79	120.83	117.73
2	C	201	52J	C24-C25-C19	3.73	120.77	117.73
2	D	201	52J	C24-C25-C19	3.69	120.74	117.73
2	A	201	52J	C24-C25-C19	3.64	120.70	117.73
2	E	201	52J	C24-C25-C19	3.64	120.70	117.73
5	G	204[B]	52I	C24-C25-C19	3.63	120.69	117.73
5	G	204[B]	52I	C34-N36-C02	3.62	120.99	116.99
5	B	204[B]	52I	C34-N36-C02	3.60	120.96	116.99
2	D	201	52J	C13-C14-C15	-3.53	119.92	126.93
5	B	204[B]	52I	C03-C32-N33	-3.53	117.95	123.82
5	G	204[B]	52I	C03-C32-N33	-3.51	117.97	123.82
2	G	201[A]	52J	C24-C25-C19	3.51	120.59	117.73
2	F	201	52J	C24-C25-C19	3.48	120.57	117.73
5	B	204[B]	52I	C32-N33-C34	3.42	122.77	116.44
2	G	201[A]	52J	C13-C14-C15	-3.40	120.17	126.93
5	G	204[B]	52I	C32-N33-C34	3.39	122.72	116.44

*Continued on next page...*

*Continued from previous page...*

Mol	Chain	Res	Type	Atoms	Z	Observed(°)	Ideal(°)
2	F	201	52J	C13-C14-C15	-3.39	120.20	126.93
5	G	204[B]	52I	C13-C14-C15	-3.39	120.20	126.93
5	B	204[B]	52I	C13-C14-C15	-3.34	120.30	126.93
2	H	201	52J	C13-C14-C15	-3.25	120.47	126.93
2	A	201	52J	C13-C14-C15	-3.23	120.51	126.93
2	H	201	52J	N33-C34-N36	-3.13	121.89	125.70
5	B	204[B]	52I	C24-C20-N17	3.13	112.68	108.00
2	B	201[A]	52J	C24-C25-C19	3.13	120.28	117.73
2	B	201[A]	52J	C25-C24-C20	3.11	120.03	116.94
2	C	201	52J	C13-C14-C15	-3.10	120.77	126.93
2	B	201[A]	52J	C24-C20-N17	3.10	112.62	108.00
2	A	201	52J	N33-C34-N36	-3.09	121.93	125.70
2	E	201	52J	N33-C34-N36	-3.08	121.95	125.70
2	E	201	52J	C13-C14-C15	-3.08	120.82	126.93
2	F	201	52J	N33-C34-N36	-3.06	121.97	125.70
2	B	201[A]	52J	N33-C34-N36	-3.06	121.98	125.70
2	D	201	52J	N33-C34-N36	-3.05	121.98	125.70
2	G	201[A]	52J	N33-C34-N36	-3.05	121.99	125.70
2	C	201	52J	N33-C34-N36	-3.05	121.99	125.70
2	G	201[A]	52J	C25-C24-C20	3.03	119.95	116.94
2	A	201	52J	C03-C32-N33	-2.99	118.84	123.82
2	B	201[A]	52J	C03-C32-N33	-2.99	118.85	123.82
2	H	201	52J	C03-C32-N33	-2.98	118.85	123.82
2	G	201[A]	52J	C03-C32-N33	-2.98	118.86	123.82
2	D	201	52J	C03-C32-N33	-2.96	118.89	123.82
2	C	201	52J	C03-C32-N33	-2.96	118.89	123.82
2	E	201	52J	C03-C32-N33	-2.95	118.90	123.82
2	F	201	52J	C25-C24-C20	2.94	119.86	116.94
2	F	201	52J	C03-C32-N33	-2.93	118.93	123.82
2	A	201	52J	C25-C24-C20	2.90	119.82	116.94
2	E	201	52J	C25-C24-C20	2.88	119.80	116.94
2	B	201[A]	52J	C13-C14-C15	-2.86	121.26	126.93
2	A	201	52J	O08-C07-C10	2.86	120.18	115.16
2	F	201	52J	C34-N36-C02	2.85	120.14	116.99
2	D	201	52J	C25-C24-C20	2.84	119.76	116.94
2	E	201	52J	O08-C07-C10	2.84	120.15	115.16
2	D	201	52J	C34-N36-C02	2.83	120.12	116.99
2	C	201	52J	C25-C24-C20	2.83	119.75	116.94
2	B	201[A]	52J	C34-N36-C02	2.83	120.12	116.99
2	H	201	52J	C34-N36-C02	2.82	120.10	116.99
2	E	201	52J	C34-N36-C02	2.82	120.10	116.99
2	A	201	52J	C34-N36-C02	2.81	120.10	116.99

*Continued on next page...*

*Continued from previous page...*

Mol	Chain	Res	Type	Atoms	Z	Observed(°)	Ideal(°)
2	H	201	52J	O08-C07-C10	2.81	120.10	115.16
2	C	201	52J	O08-C07-C10	2.81	120.10	115.16
2	B	201[A]	52J	O08-C07-C10	2.80	120.08	115.16
2	H	201	52J	C25-C24-C20	2.80	119.72	116.94
2	G	201[A]	52J	O08-C07-C10	2.80	120.08	115.16
2	F	201	52J	O08-C07-C10	2.79	120.07	115.16
5	G	204[B]	52I	O08-C07-C10	2.79	120.06	115.16
2	G	201[A]	52J	C34-N36-C02	2.79	120.06	116.99
2	C	201	52J	C34-N36-C02	2.78	120.06	116.99
2	F	201	52J	C15-C16-N17	2.77	120.71	115.91
2	D	201	52J	O08-C07-C10	2.77	120.02	115.16
5	G	204[B]	52I	C25-C24-C20	2.75	119.67	116.94
2	F	201	52J	C24-C20-N17	2.70	112.03	108.00
5	B	204[B]	52I	O08-C07-C10	2.70	119.90	115.16
5	B	204[B]	52I	N35-C34-N33	2.67	120.15	117.44
2	D	201	52J	C15-C16-N17	2.66	120.51	115.91
5	G	204[B]	52I	N35-C34-N33	2.64	120.12	117.44
2	B	201[A]	52J	C15-C16-N17	2.62	120.45	115.91
2	E	201	52J	C15-C16-N17	2.62	120.45	115.91
2	C	201	52J	C15-C16-N17	2.62	120.45	115.91
2	A	201	52J	O08-C07-C06	-2.53	119.77	124.12
2	A	201	52J	C15-C16-N17	2.52	120.28	115.91
2	F	201	52J	O08-C07-C06	-2.51	119.79	124.12
2	E	201	52J	O08-C07-C06	-2.51	119.80	124.12
2	C	201	52J	O08-C07-C06	-2.50	119.81	124.12
2	B	201[A]	52J	O08-C07-C06	-2.49	119.83	124.12
2	H	201	52J	C15-C16-N17	2.48	120.20	115.91
2	G	201[A]	52J	C24-C20-N17	2.48	111.70	108.00
2	H	201	52J	O08-C07-C06	-2.47	119.86	124.12
2	G	201[A]	52J	O08-C07-C06	-2.46	119.89	124.12
5	B	204[B]	52I	C15-C16-N17	2.46	120.17	115.91
2	D	201	52J	C24-C20-N17	2.44	111.65	108.00
2	D	201	52J	O08-C07-C06	-2.44	119.91	124.12
2	E	201	52J	C24-C20-N17	2.41	111.60	108.00
5	G	204[B]	52I	C15-C16-N17	2.41	120.08	115.91
5	G	204[B]	52I	O08-C07-C06	-2.36	120.06	124.12
2	G	201[A]	52J	C15-C16-N17	2.34	119.97	115.91
2	A	201	52J	C24-C20-N17	2.32	111.46	108.00
5	G	204[B]	52I	C24-C20-N17	2.31	111.46	108.00
2	C	201	52J	C24-C20-N17	2.27	111.39	108.00
5	B	204[B]	52I	O08-C07-C06	-2.26	120.23	124.12
5	G	204[B]	52I	C32-C03-C02	2.22	118.74	115.72

*Continued on next page...*

*Continued from previous page...*

Mol	Chain	Res	Type	Atoms	Z	Observed(°)	Ideal(°)
2	H	201	52J	C32-N33-C34	2.20	120.52	116.44
2	C	201	52J	N01-C02-N36	2.20	120.15	117.03
2	F	201	52J	N01-C02-N36	2.20	120.14	117.03
2	B	201[A]	52J	N01-C02-N36	2.19	120.13	117.03
2	A	201	52J	C32-N33-C34	2.18	120.48	116.44
5	B	204[B]	52I	C32-C03-C02	2.16	118.67	115.72
2	G	201[A]	52J	C32-N33-C34	2.16	120.43	116.44
2	D	201	52J	N01-C02-N36	2.15	120.08	117.03
2	B	201[A]	52J	C32-N33-C34	2.15	120.42	116.44
2	E	201	52J	C32-N33-C34	2.14	120.41	116.44
2	C	201	52J	C32-N33-C34	2.14	120.41	116.44
2	D	201	52J	C32-C03-C02	2.14	118.63	115.72
2	A	201	52J	N01-C02-N36	2.13	120.05	117.03
2	D	201	52J	C32-N33-C34	2.13	120.38	116.44
2	F	201	52J	C32-N33-C34	2.13	120.38	116.44
2	H	201	52J	N01-C02-N36	2.11	120.02	117.03
2	E	201	52J	N01-C02-N36	2.10	120.00	117.03
2	G	201[A]	52J	N01-C02-N36	2.10	120.00	117.03
2	B	201[A]	52J	C32-C03-C02	2.09	118.57	115.72
2	G	201[A]	52J	C32-C03-C02	2.09	118.56	115.72
2	E	201	52J	C32-C03-C02	2.08	118.56	115.72
2	A	201	52J	C32-C03-C02	2.08	118.55	115.72
2	E	201	52J	C13-C31-C05	-2.07	119.79	122.22
2	F	201	52J	C32-C03-C02	2.07	118.53	115.72
2	B	201[A]	52J	C13-C31-C05	-2.06	119.80	122.22
2	C	201	52J	C32-C03-C02	2.05	118.50	115.72
2	H	201	52J	C32-C03-C02	2.04	118.49	115.72
2	C	201	52J	C13-C31-C05	-2.03	119.83	122.22
2	A	201	52J	C13-C31-C05	-2.02	119.84	122.22
2	H	201	52J	C24-C20-N17	2.02	111.01	108.00
2	D	201	52J	C13-C31-C05	-2.01	119.86	122.22
2	H	201	52J	C13-C31-C05	-2.00	119.86	122.22

There are no chirality outliers.

All (52) torsion outliers are listed below:

Mol	Chain	Res	Type	Atoms
5	B	204[B]	52I	N17-C20-C21-C22
5	B	204[B]	52I	C24-C20-C21-C22
2	F	201	52J	C14-C15-C16-O30
2	F	201	52J	C14-C15-C16-N17
2	F	201	52J	N17-C20-C21-C22

*Continued on next page...*

*Continued from previous page...*

Mol	Chain	Res	Type	Atoms
2	F	201	52J	C24-C20-C21-C22
2	B	201[A]	52J	N17-C20-C21-C22
2	B	201[A]	52J	C24-C20-C21-C22
5	G	204[B]	52I	C13-C14-C15-C16
2	B	201[A]	52J	C07-C10-O11-C12
5	G	204[B]	52I	C10-C13-C14-C15
2	F	201	52J	C20-C21-C22-C37
5	G	204[B]	52I	C20-C21-C22-C37
5	B	204[B]	52I	C20-C21-C22-C37
2	F	201	52J	C20-C21-C22-C23
2	B	201[A]	52J	C13-C10-O11-C12
5	G	204[B]	52I	C20-C21-C22-C23
2	D	201	52J	C14-C15-C16-O30
2	D	201	52J	C14-C15-C16-N17
5	G	204[B]	52I	C07-C10-O11-C12
5	B	204[B]	52I	C20-C21-C22-C23
5	G	204[B]	52I	C13-C10-O11-C12
5	G	204[B]	52I	C14-C15-C16-O30
2	D	201	52J	C07-C10-O11-C12
2	B	201[A]	52J	C20-C21-C22-C23
5	G	204[B]	52I	C14-C15-C16-N17
2	D	201	52J	C13-C10-O11-C12
2	F	201	52J	C31-C13-C14-C15
2	G	201[A]	52J	C20-C21-C22-C37
2	B	201[A]	52J	C14-C15-C16-N17
2	D	201	52J	N17-C20-C21-C22
2	C	201	52J	N17-C20-C21-C22
5	G	204[B]	52I	N17-C20-C21-C22
2	B	201[A]	52J	C14-C15-C16-O30
5	G	204[B]	52I	C31-C13-C14-C15
5	G	204[B]	52I	C24-C20-C21-C22
2	F	201	52J	C10-C13-C14-C15
2	G	201[A]	52J	C13-C10-O11-C12
2	F	201	52J	C07-C10-O11-C12
2	H	201	52J	C14-C15-C16-N17
2	H	201	52J	C10-C13-C14-C15
2	B	201[A]	52J	C10-C13-C14-C15
2	F	201	52J	C13-C10-O11-C12
2	E	201	52J	C10-C13-C14-C15
2	H	201	52J	C14-C15-C16-O30
2	E	201	52J	C14-C15-C16-O30
2	E	201	52J	C14-C15-C16-N17

*Continued on next page...*

*Continued from previous page...*

Mol	Chain	Res	Type	Atoms
2	A	201	52J	C14-C15-C16-N17
2	A	201	52J	C10-C13-C14-C15
2	A	201	52J	C20-C21-C22-C37
2	C	201	52J	C24-C20-C21-C22
2	A	201	52J	C14-C15-C16-O30

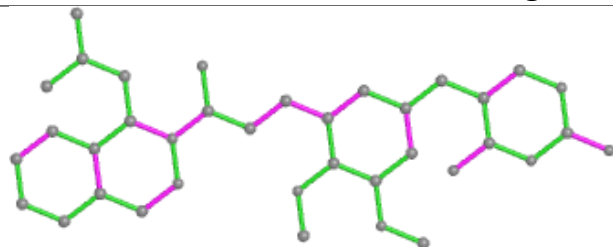
There are no ring outliers.

10 monomers are involved in 90 short contacts:

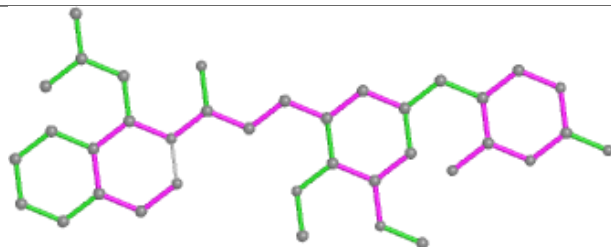
Mol	Chain	Res	Type	Clashes	Symm-Clashes
2	D	201	52J	14	0
2	G	201[A]	52J	9	0
2	B	201[A]	52J	12	0
2	A	201	52J	8	0
2	C	201	52J	4	0
2	E	201	52J	12	0
5	B	204[B]	52I	2	0
5	G	204[B]	52I	9	0
2	H	201	52J	9	0
2	F	201	52J	11	0

The following is a two-dimensional graphical depiction of Mogul quality analysis of bond lengths, bond angles, torsion angles, and ring geometry for all instances of the Ligand of Interest. In addition, ligands with molecular weight > 250 and outliers as shown on the validation Tables will also be included. For torsion angles, if less than 5% of the Mogul distribution of torsion angles is within 10 degrees of the torsion angle in question, then that torsion angle is considered an outlier. Any bond that is central to one or more torsion angles identified as an outlier by Mogul will be highlighted in the graph. For rings, the root-mean-square deviation (RMSD) between the ring in question and similar rings identified by Mogul is calculated over all ring torsion angles. If the average RMSD is greater than 60 degrees and the minimal RMSD between the ring in question and any Mogul-identified rings is also greater than 60 degrees, then that ring is considered an outlier. The outliers are highlighted in purple. The color gray indicates Mogul did not find sufficient equivalents in the CSD to analyse the geometry.

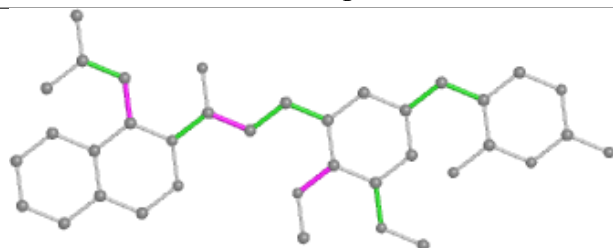
## Ligand 52J D 201



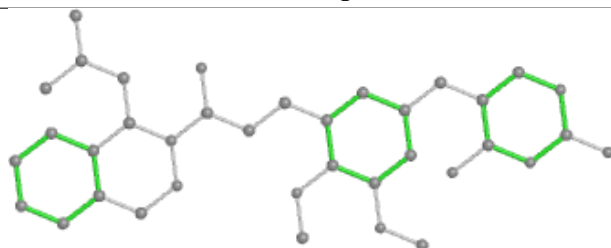
Bond lengths



Bond angles

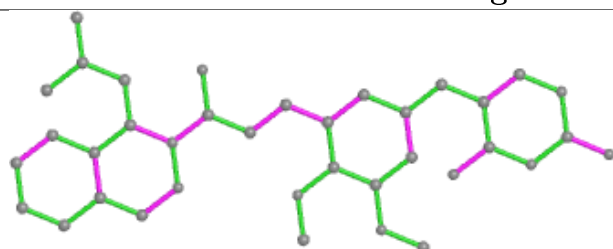


Torsions

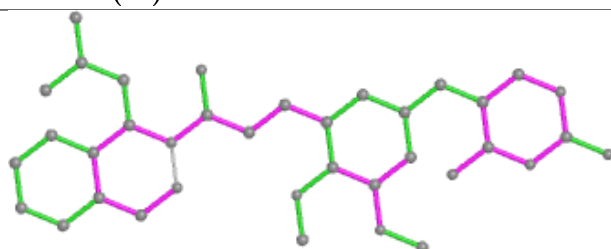


Rings

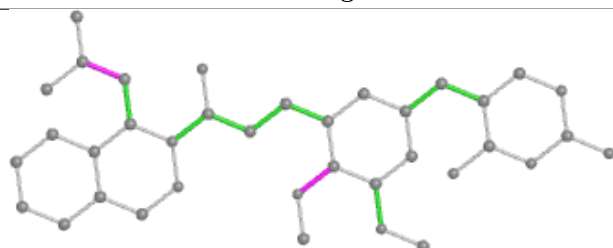
## Ligand 52J G 201 (A)



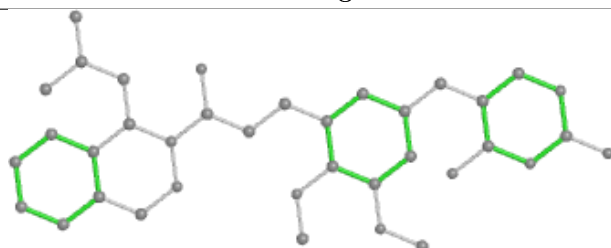
Bond lengths



Bond angles

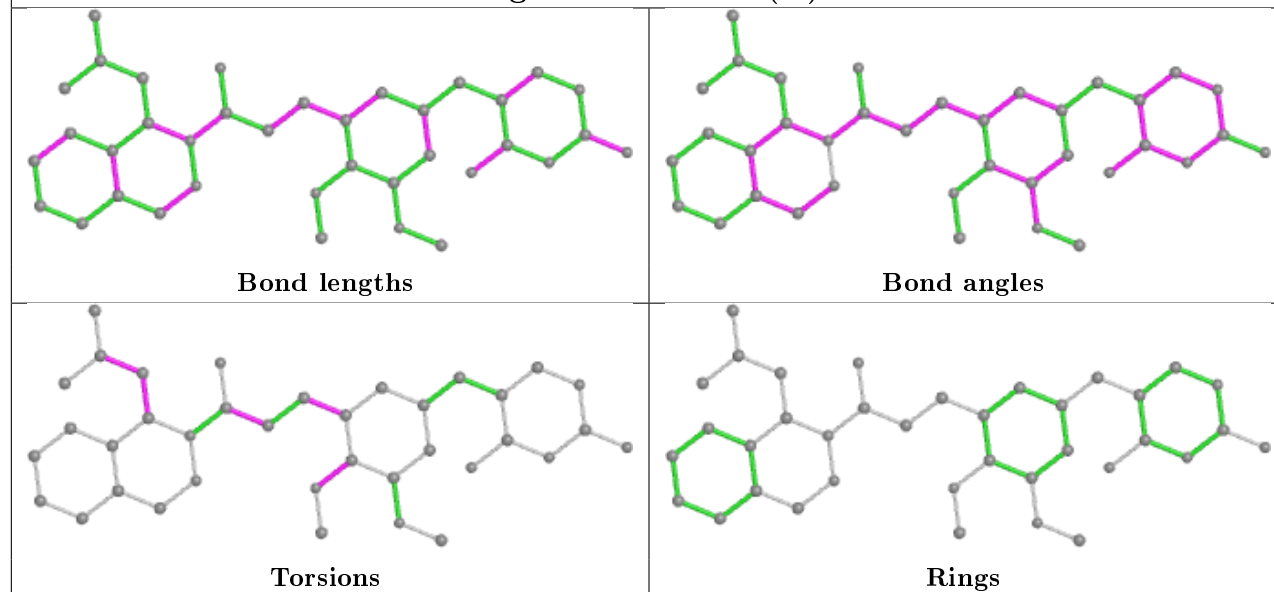


Torsions

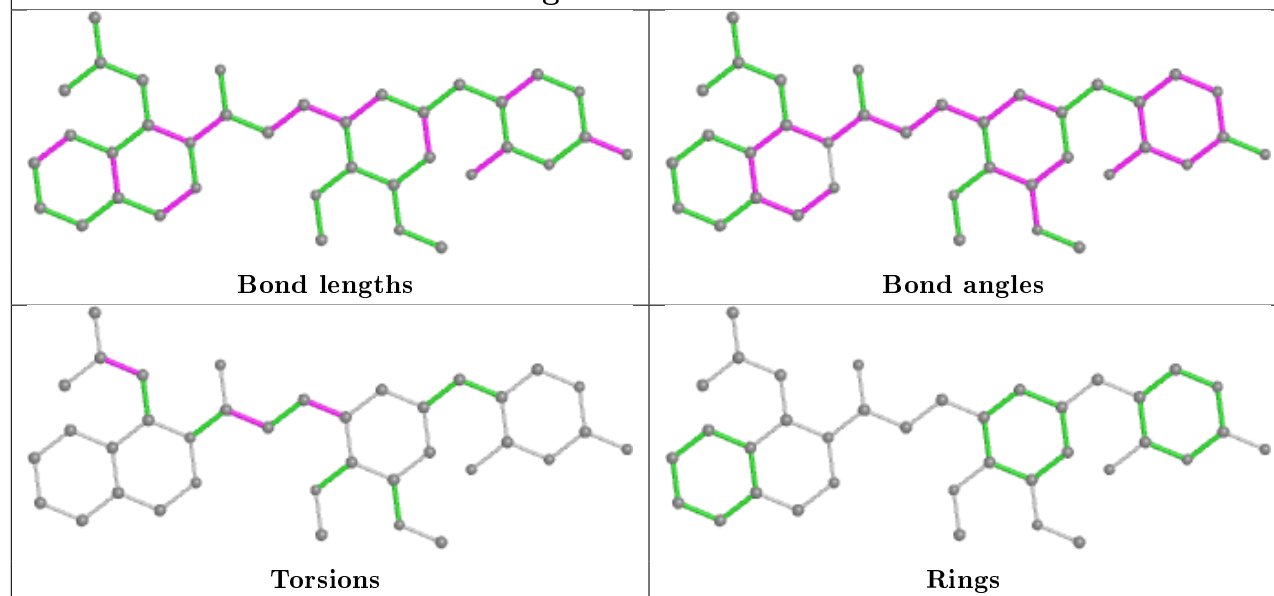


Rings

## Ligand 52J B 201 (A)

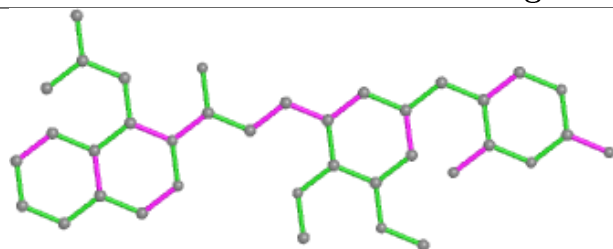


## Ligand 52J A 201

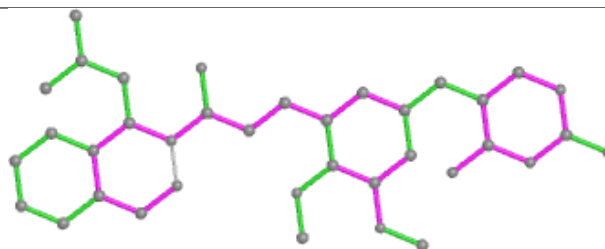




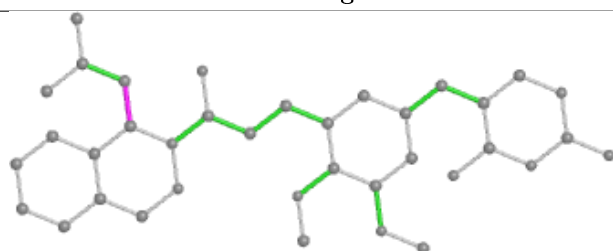
## Ligand 52J C 201



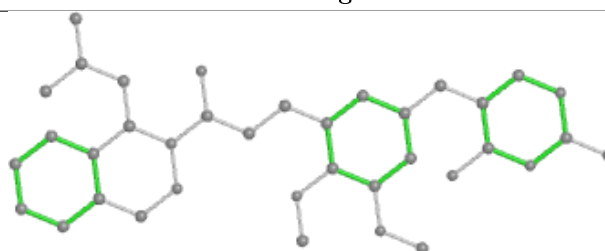
Bond lengths



Bond angles

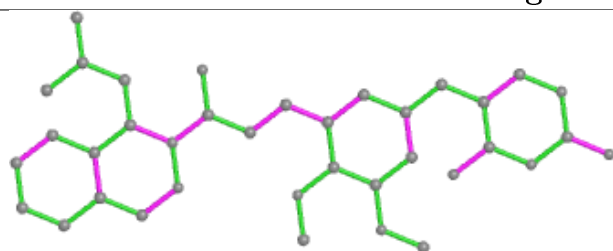


Torsions

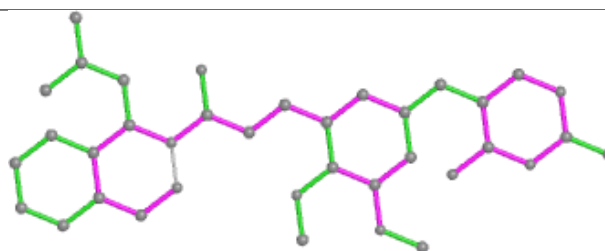


Rings

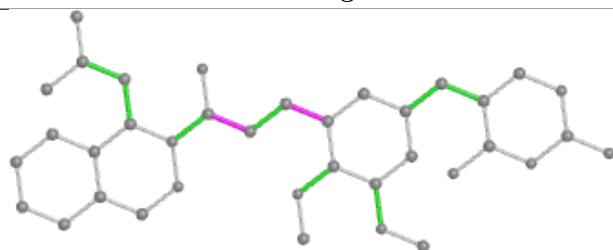
## Ligand 52J E 201



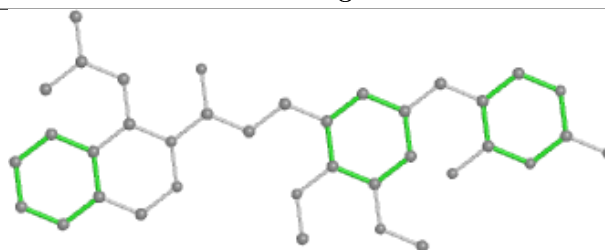
Bond lengths



Bond angles

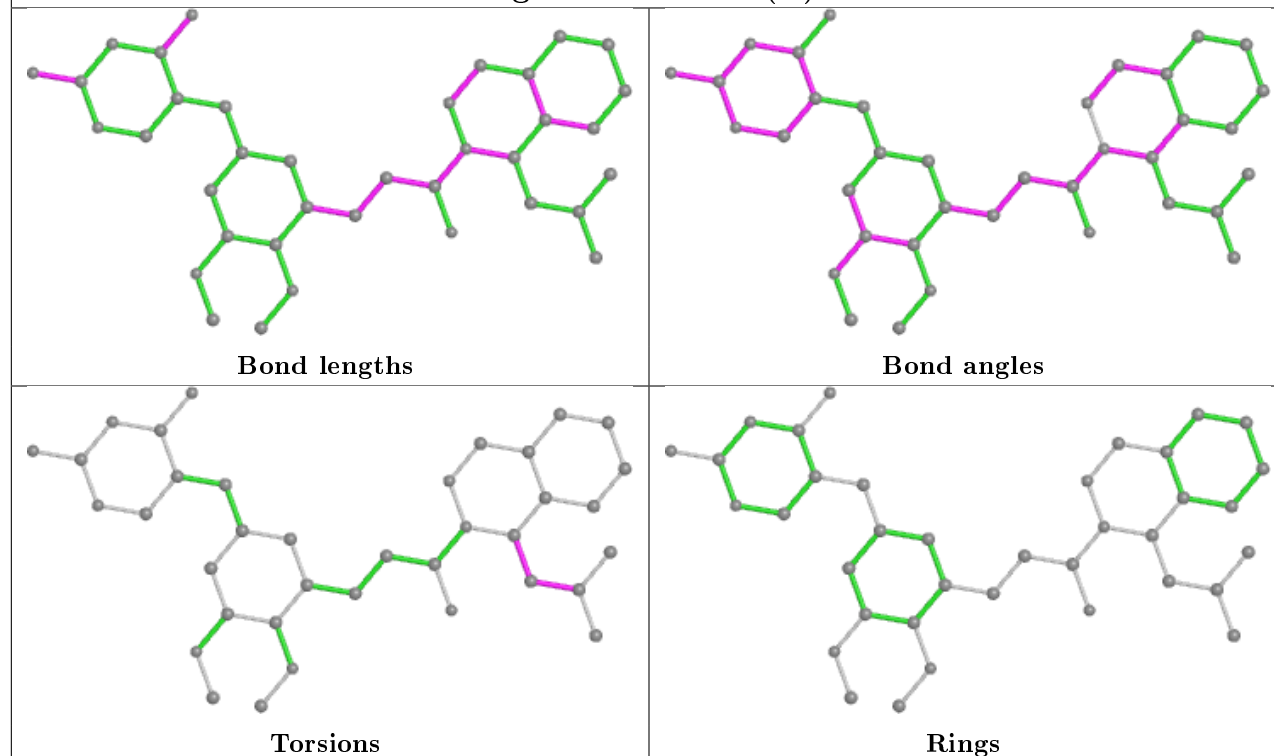


Torsions

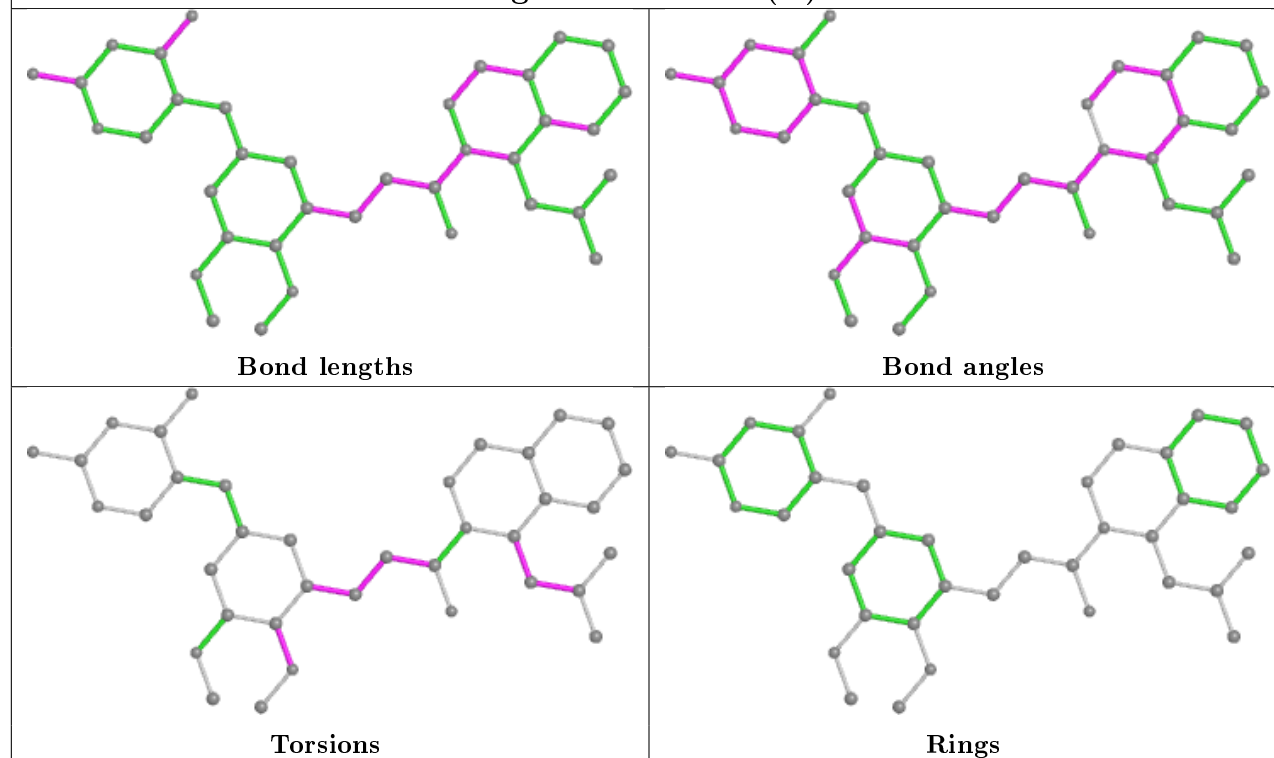


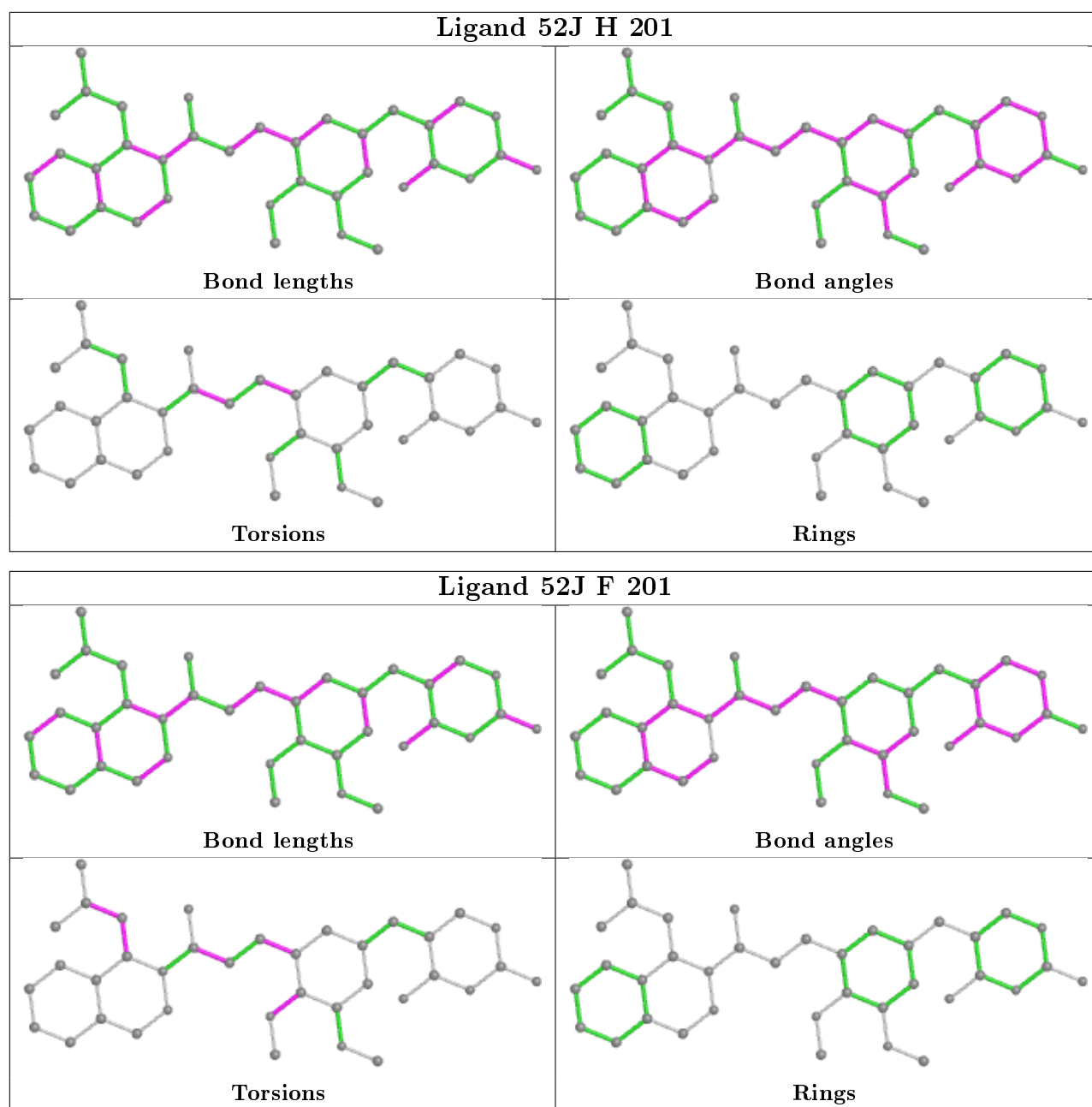
Rings

## Ligand 52I B 204 (B)



## Ligand 52I G 204 (B)





## 5.7 Other polymers [i](#)

There are no such residues in this entry.

## 5.8 Polymer linkage issues [i](#)

There are no chain breaks in this entry.

## 6 Fit of model and data [i](#)

### 6.1 Protein, DNA and RNA chains [i](#)

In the following table, the column labelled ‘#RSRZ> 2’ contains the number (and percentage) of RSRZ outliers, followed by percent RSRZ outliers for the chain as percentile scores relative to all X-ray entries and entries of similar resolution. The OWAB column contains the minimum, median, 95<sup>th</sup> percentile and maximum values of the occupancy-weighted average B-factor per residue. The column labelled ‘Q< 0.9’ lists the number of (and percentage) of residues with an average occupancy less than 0.9.

Mol	Chain	Analysed	<RSRZ>	#RSRZ>2	OWAB(Å <sup>2</sup> )	Q<0.9
1	A	166/166 (100%)	-0.34	0 100 100	18, 31, 59, 70	0
1	B	166/166 (100%)	-0.38	0 100 100	18, 29, 56, 89	0
1	C	166/166 (100%)	-0.29	1 (0%) 89 91	20, 33, 59, 70	0
1	D	166/166 (100%)	-0.25	2 (1%) 79 82	21, 37, 73, 92	0
1	E	166/166 (100%)	-0.27	1 (0%) 89 91	22, 38, 73, 82	0
1	F	166/166 (100%)	-0.39	0 100 100	21, 34, 59, 73	0
1	G	166/166 (100%)	-0.35	0 100 100	19, 33, 59, 79	0
1	H	166/166 (100%)	-0.08	7 (4%) 36 42	18, 39, 84, 110	0
All	All	1328/1328 (100%)	-0.29	11 (0%) 86 88	18, 34, 67, 110	0

All (11) RSRZ outliers are listed below:

Mol	Chain	Res	Type	RSRZ
1	H	72	GLU	6.6
1	H	73	GLY	5.8
1	D	55	LEU	5.1
1	H	89	ASN	3.7
1	D	163	LEU	3.5
1	H	53	ARG	3.4
1	H	70	HIS	2.9
1	H	68	GLY	2.7
1	C	19	ASN	2.7
1	H	55	LEU	2.1
1	E	67	GLU	2.0

### 6.2 Non-standard residues in protein, DNA, RNA chains [i](#)

There are no non-standard protein/DNA/RNA residues in this entry.

## 6.3 Carbohydrates ⓘ

There are no carbohydrates in this entry.

## 6.4 Ligands ⓘ

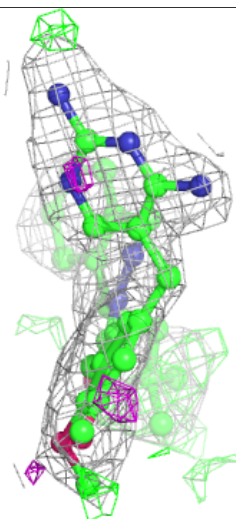
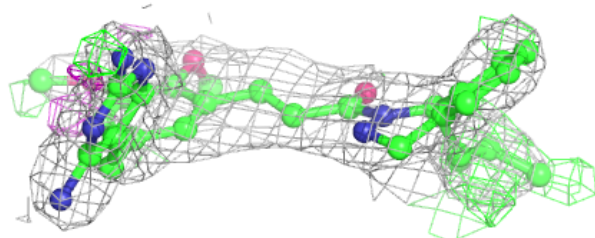
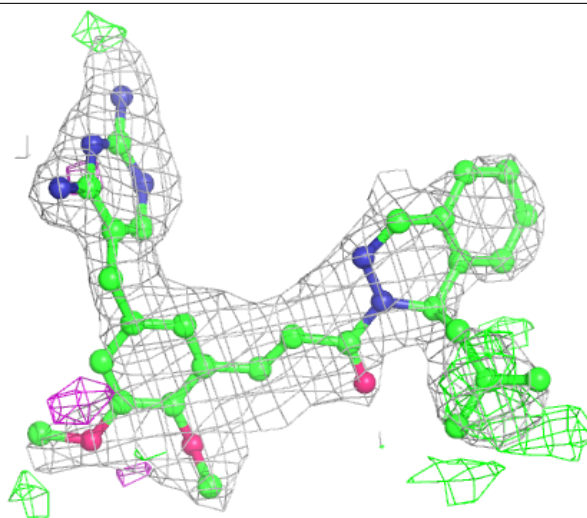
In the following table, the Atoms column lists the number of modelled atoms in the group and the number defined in the chemical component dictionary. The B-factors column lists the minimum, median, 95<sup>th</sup> percentile and maximum values of B factors of atoms in the group. The column labelled 'Q< 0.9' lists the number of atoms with occupancy less than 0.9.

Mol	Type	Chain	Res	Atoms	RSCC	RSR	B-factors(Å <sup>2</sup> )	Q<0.9
5	52I	B	204[B]	37/37	0.85	0.18	19,38,54,56	37
2	52J	D	201	37/37	0.86	0.21	20,52,76,77	0
2	52J	A	201	37/37	0.86	0.18	15,45,64,66	0
2	52J	F	201	37/37	0.88	0.16	19,37,71,111	0
2	52J	E	201	37/37	0.88	0.16	21,46,79,98	0
2	52J	C	201	37/37	0.88	0.18	15,42,59,65	0
5	52I	G	204[B]	37/37	0.88	0.17	17,36,44,50	37
2	52J	H	201	37/37	0.89	0.15	16,38,62,63	0
2	52J	B	201[A]	37/37	0.91	0.15	19,37,55,56	37
2	52J	G	201[A]	37/37	0.94	0.13	16,34,44,49	37
3	CA	H	203	1/1	0.95	0.07	35,35,35,35	0
4	CL	H	202	1/1	0.95	0.11	50,50,50,50	0
3	CA	G	202	1/1	0.96	0.08	34,34,34,34	0
3	CA	A	202	1/1	0.97	0.04	34,34,34,34	0
4	CL	D	203	1/1	0.98	0.09	33,33,33,33	0
4	CL	G	203	1/1	0.98	0.13	39,39,39,39	0
4	CL	A	203	1/1	0.98	0.10	34,34,34,34	0
3	CA	E	202	1/1	0.98	0.07	29,29,29,29	0
4	CL	C	203	1/1	0.98	0.14	31,31,31,31	0
4	CL	E	203	1/1	0.98	0.09	41,41,41,41	0
3	CA	F	202	1/1	0.98	0.06	34,34,34,34	0
4	CL	B	203	1/1	0.99	0.08	32,32,32,32	0
3	CA	D	202	1/1	0.99	0.08	27,27,27,27	0
3	CA	C	202	1/1	0.99	0.05	23,23,23,23	0
3	CA	B	202	1/1	0.99	0.06	26,26,26,26	0
4	CL	F	203	1/1	0.99	0.08	38,38,38,38	0

The following is a graphical depiction of the model fit to experimental electron density of all instances of the Ligand of Interest. In addition, ligands with molecular weight > 250 and outliers as shown on the geometry validation Tables will also be included. Each fit is shown from different orientation to approximate a three-dimensional view.

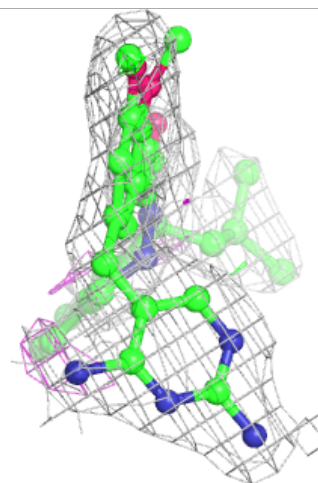
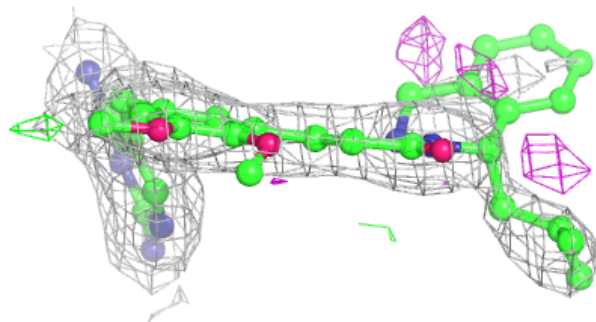
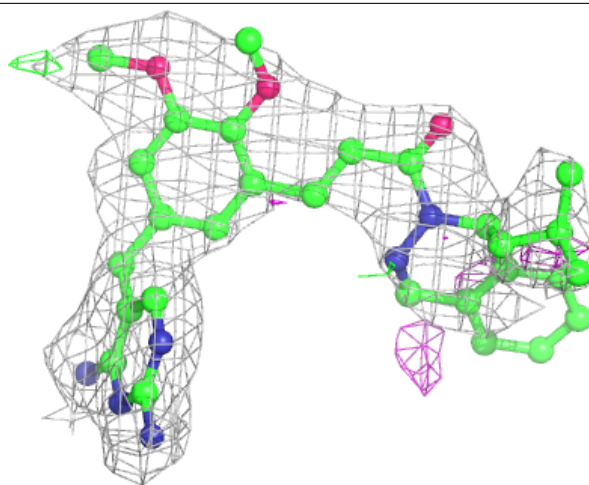
**Electron density around 52I B 204 (B):**

$2mF_o-DF_c$  (at 0.7 rmsd) in gray  
 $mF_o-DF_c$  (at 3 rmsd) in purple (negative)  
and green (positive)



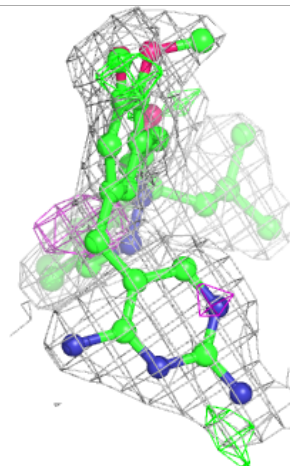
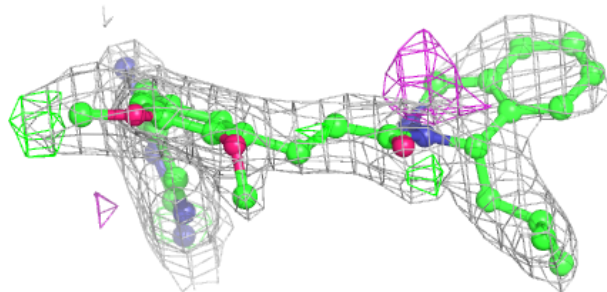
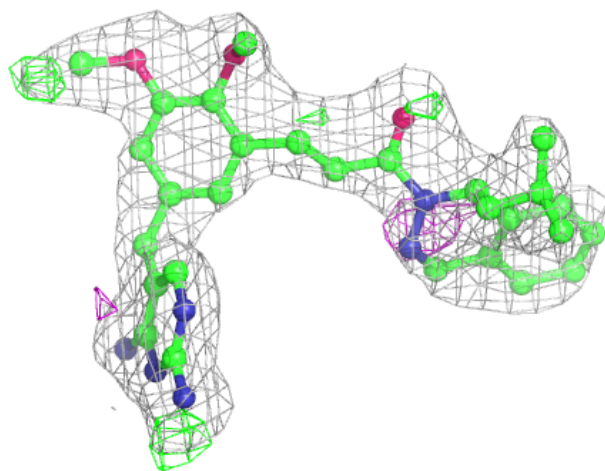
**Electron density around 52J D 201:**

$2mF_o-DF_c$  (at 0.7 rmsd) in gray  
 $mF_o-DF_c$  (at 3 rmsd) in purple (negative)  
and green (positive)



**Electron density around 52J A 201:**

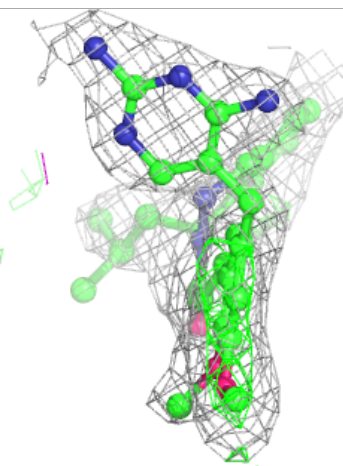
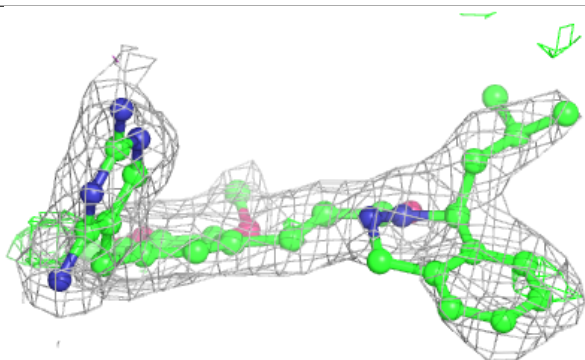
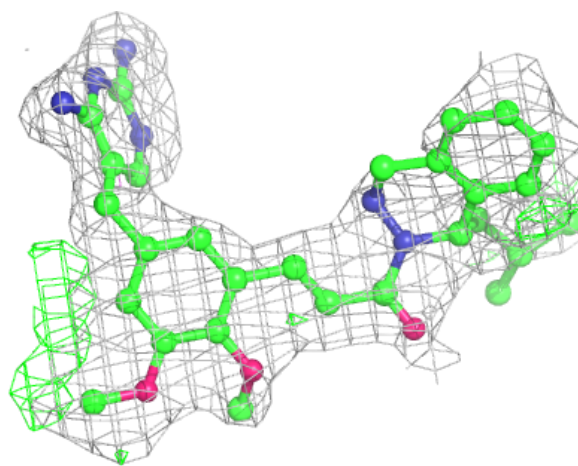
$2mF_o-DF_c$  (at 0.7 rmsd) in gray  
 $mF_o-DF_c$  (at 3 rmsd) in purple (negative)  
and green (positive)





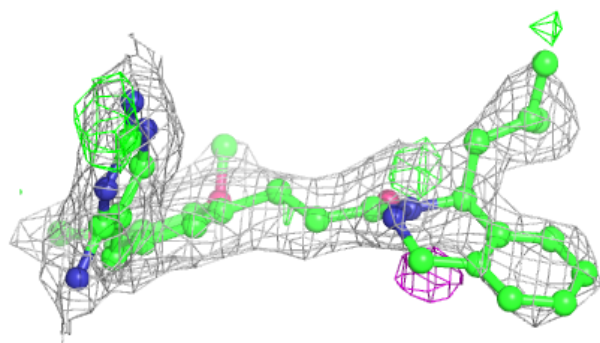
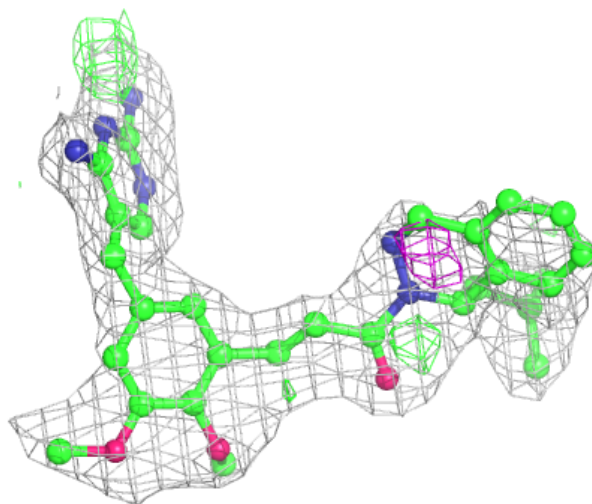
**Electron density around 52J F 201:**

$2mF_o-DF_c$  (at 0.7 rmsd) in gray  
 $mF_o-DF_c$  (at 3 rmsd) in purple (negative)  
and green (positive)



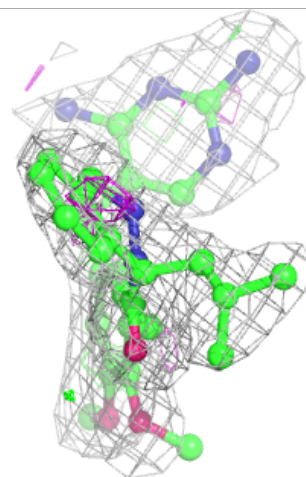
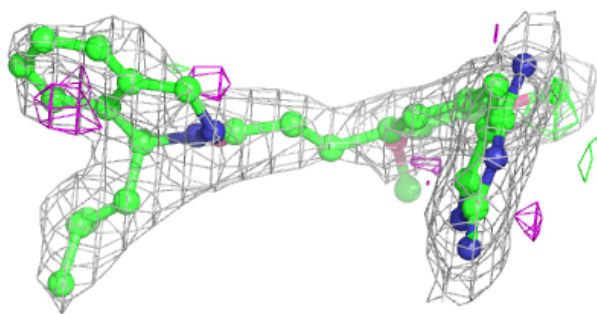
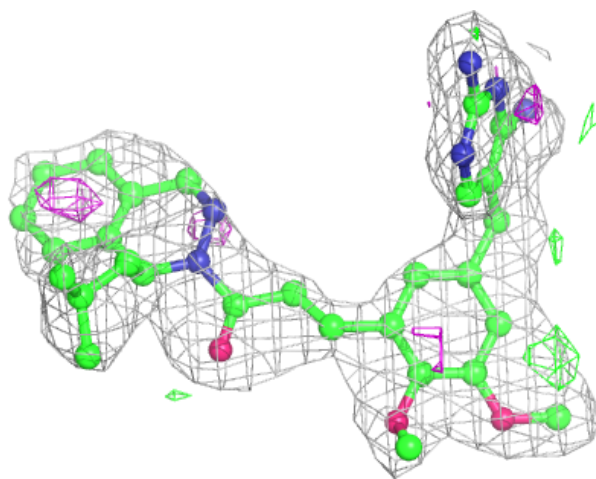
**Electron density around 52J E 201:**

$2mF_o-DF_c$  (at 0.7 rmsd) in gray  
 $mF_o-DF_c$  (at 3 rmsd) in purple (negative)  
and green (positive)



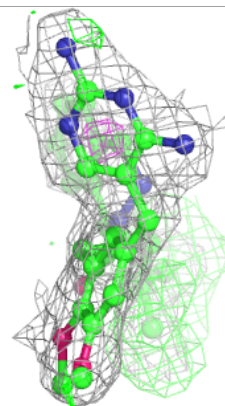
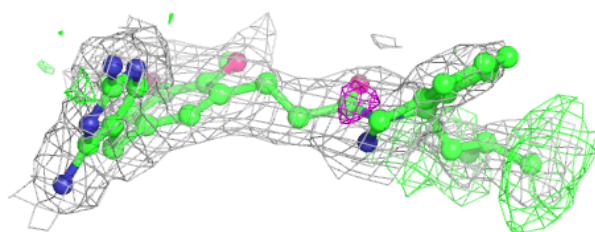
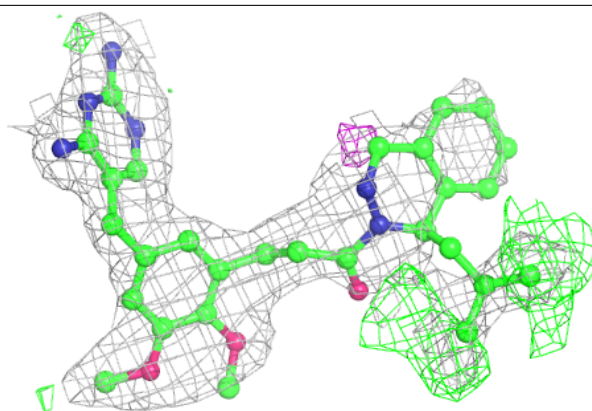
**Electron density around 52J C 201:**

$2mF_o-DF_c$  (at 0.7 rmsd) in gray  
 $mF_o-DF_c$  (at 3 rmsd) in purple (negative)  
and green (positive)

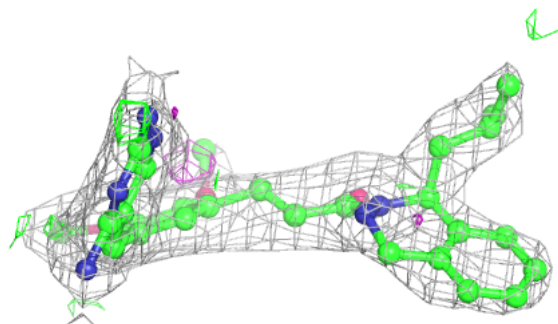
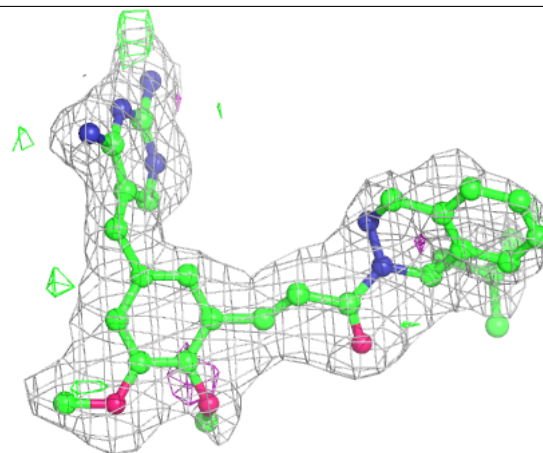


**Electron density around 52I G 204 (B):**

$2mF_o-DF_c$  (at 0.7 rmsd) in gray  
 $mF_o-DF_c$  (at 3 rmsd) in purple (negative)  
and green (positive)

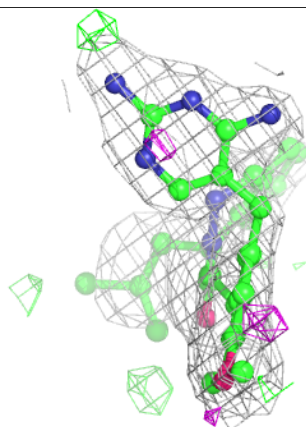
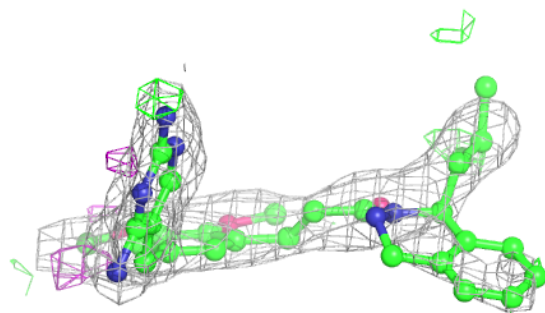
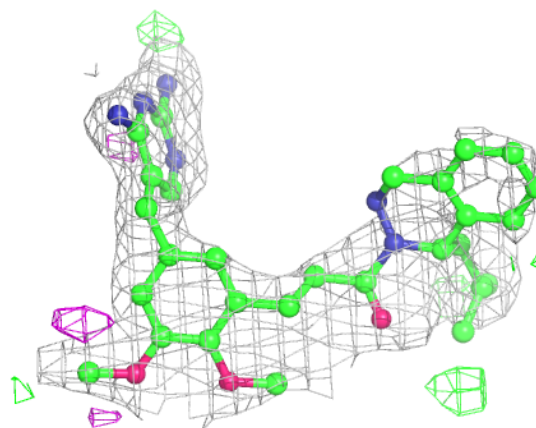
**Electron density around 52J H 201:**

$2mF_o-DF_c$  (at 0.7 rmsd) in gray  
 $mF_o-DF_c$  (at 3 rmsd) in purple (negative)  
and green (positive)



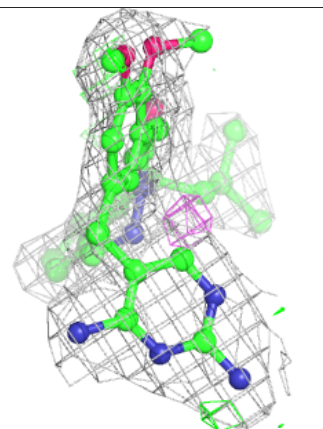
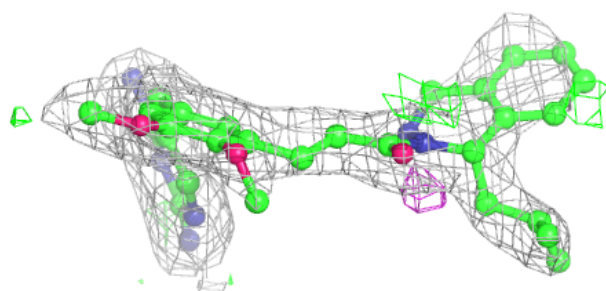
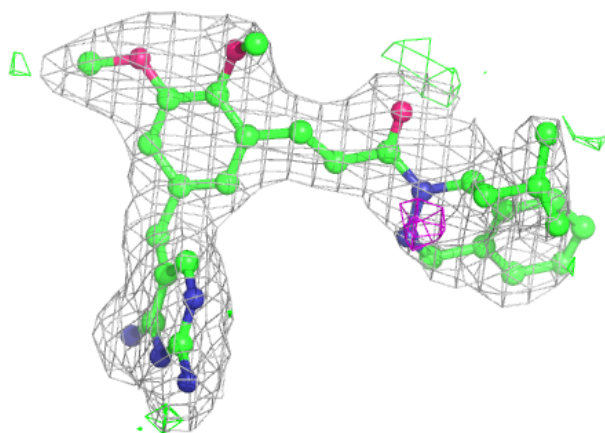
**Electron density around 52J B 201 (A):**

$2mF_o-DF_c$  (at 0.7 rmsd) in gray  
 $mF_o-DF_c$  (at 3 rmsd) in purple (negative)  
and green (positive)



**Electron density around 52J G 201 (A):**

$2mF_o - DF_c$  (at 0.7 rmsd) in gray  
 $mF_o - DF_c$  (at 3 rmsd) in purple (negative)  
and green (positive)



## 6.5 Other polymers ⓘ

There are no such residues in this entry.