



Full wwPDB X-ray Structure Validation Report ⓘ

Aug 20, 2020 – 04:01 PM BST

PDB ID : 4ELU
Title : Snapshot of the large fragment of DNA polymerase I from *Thermus Aquaticus* processing modified pyrimidines
Authors : Marx, A.; Diederichs, K.; Obeid, S.
Deposited on : 2012-04-11
Resolution : 1.80 Å(reported)

This is a Full wwPDB X-ray Structure Validation Report for a publicly released PDB entry.

We welcome your comments at validation@mail.wwpdb.org

A user guide is available at

<https://www.wwpdb.org/validation/2017/XrayValidationReportHelp>

with specific help available everywhere you see the ⓘ symbol.

The following versions of software and data (see [references ⓘ](#)) were used in the production of this report:

MolProbity : 4.02b-467
Mogul : 1.8.5 (274361), CSD as541be (2020)
Xtriage (Phenix) : 1.13
EDS : 2.13.1
buster-report : 1.1.7 (2018)
Percentile statistics : 20191225.v01 (using entries in the PDB archive December 25th 2019)
Refmac : 5.8.0158
CCP4 : 7.0.044 (Gargrove)
Ideal geometry (proteins) : Engh & Huber (2001)
Ideal geometry (DNA, RNA) : Parkinson et al. (1996)
Validation Pipeline (wwPDB-VP) : 2.13.1

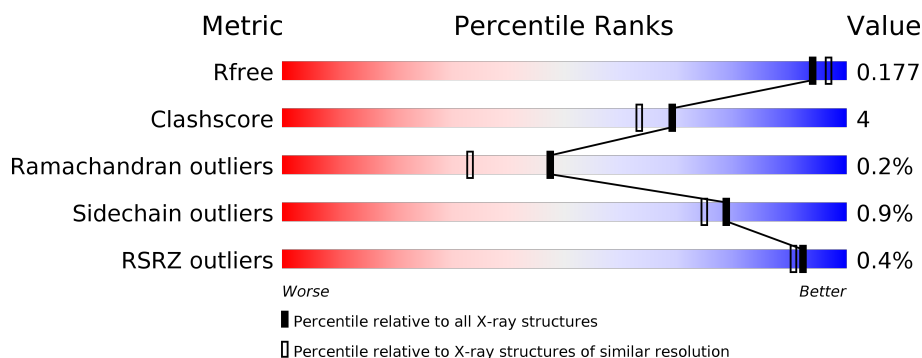
1 Overall quality at a glance ⓘ

The following experimental techniques were used to determine the structure:

X-RAY DIFFRACTION

The reported resolution of this entry is 1.80 Å.

Percentile scores (ranging between 0-100) for global validation metrics of the entry are shown in the following graphic. The table shows the number of entries on which the scores are based.



Metric	Whole archive (#Entries)	Similar resolution (#Entries, resolution range(Å))
R_{free}	130704	5950 (1.80-1.80)
Clashscore	141614	6793 (1.80-1.80)
Ramachandran outliers	138981	6697 (1.80-1.80)
Sidechain outliers	138945	6696 (1.80-1.80)
RSRZ outliers	127900	5850 (1.80-1.80)

The table below summarises the geometric issues observed across the polymeric chains and their fit to the electron density. The red, orange, yellow and green segments on the lower bar indicate the fraction of residues that contain outliers for ≥ 3 , 2, 1 and 0 types of geometric quality criteria respectively. A grey segment represents the fraction of residues that are not modelled. The numeric value for each fraction is indicated below the corresponding segment, with a dot representing fractions $\leq 5\%$. The upper red bar (where present) indicates the fraction of residues that have poor fit to the electron density. The numeric value is given above the bar.

Mol	Chain	Length	Quality of chain
1	A	540	<div> <div style="width: 93%;"></div> <div style="width: 7%;"></div> </div> <div>93% 7%</div>
2	B	12	<div> <div style="width: 17%;"></div> <div style="width: 75%;"></div> <div style="width: 8%;"></div> </div> <div>17% 75% 8%</div>
3	C	16	<div> <div style="width: 56%;"></div> <div style="width: 38%;"></div> <div style="width: 6%;"></div> </div> <div>56% 38% 6%</div>

The following table lists non-polymeric compounds, carbohydrate monomers and non-standard residues in protein, DNA, RNA chains that are outliers for geometric or electron-density-fit criteria:

Mol	Type	Chain	Res	Chirality	Geometry	Clashes	Electron density
8	ACT	C	301	-	-	X	-

2 Entry composition

There are 9 unique types of molecules in this entry. The entry contains 5412 atoms, of which 0 are hydrogens and 0 are deuteriums.

In the tables below, the ZeroOcc column contains the number of atoms modelled with zero occupancy, the AltConf column contains the number of residues with at least one atom in alternate conformation and the Trace column contains the number of residues modelled with at most 2 atoms.

- Molecule 1 is a protein called DNA polymerase I, thermostable.

Mol	Chain	Residues	Atoms					ZeroOcc	AltConf	Trace
1	A	539	Total	C	N	O	S	0	7	0
			4331	2752	779	786	14			

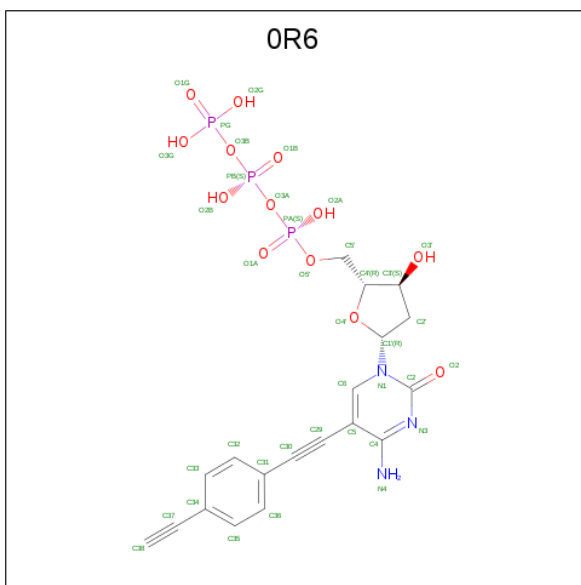
- Molecule 2 is a DNA chain called DNA (5'-D(*GP*AP*CP*CP*AP*CP*GP*GP*CP*GP*CP*(DDG))-3').

Mol	Chain	Residues	Atoms					ZeroOcc	AltConf	Trace
2	B	12	Total	C	N	O	P	0	0	0
			243	115	50	67	11			

- Molecule 3 is a DNA chain called DNA (5'-D(*AP*AP*AP*GP*CP*GP*CP*GP*CP*CP*GP*TP*GP*GP*TP*C)-3').

Mol	Chain	Residues	Atoms					ZeroOcc	AltConf	Trace
3	C	16	Total	C	N	O	P	0	0	0
			327	155	64	93	15			

- Molecule 4 is 2'-deoxy-5-[(4-ethynylphenyl)ethynyl]cytidine 5'-(tetrahydrogen triphosphate) (three-letter code: 0R6) (formula: C₁₉H₂₀N₃O₁₃P₃).

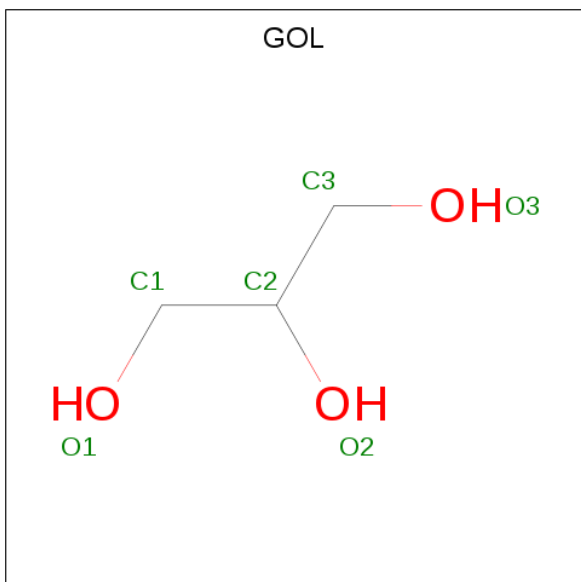


Mol	Chain	Residues	Atoms					ZeroOcc	AltConf
4	A	1	Total	C	N	O	P	0	0
			38	19	3	13	3		

- Molecule 5 is MAGNESIUM ION (three-letter code: MG) (formula: Mg).

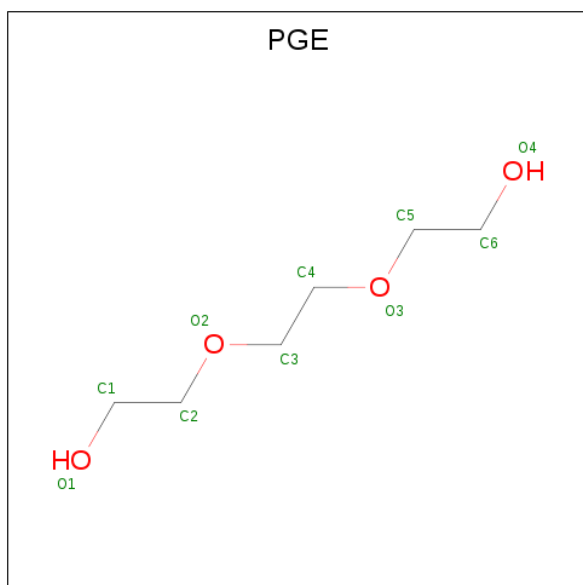
Mol	Chain	Residues	Atoms	ZeroOcc	AltConf
5	B	1	Total Mg 1 1	0	0
5	A	2	Total Mg 2 2	0	0

- Molecule 6 is GLYCEROL (three-letter code: GOL) (formula: $\text{C}_3\text{H}_8\text{O}_3$).



Mol	Chain	Residues	Atoms			ZeroOcc	AltConf
6	A	1	Total	C	O	0	0
			6	3	3		
6	A	1	Total	C	O	0	0
			6	3	3		
6	A	1	Total	C	O	0	0
			6	3	3		
6	A	1	Total	C	O	0	0
			6	3	3		
6	A	1	Total	C	O	0	0
			6	3	3		
6	B	1	Total	C	O	0	0
			6	3	3		
6	B	1	Total	C	O	0	0
			6	3	3		
6	C	1	Total	C	O	0	0
			6	3	3		
6	C	1	Total	C	O	0	0
			6	3	3		
6	C	1	Total	C	O	0	0
			6	3	3		

- Molecule 7 is TRIETHYLENE GLYCOL (three-letter code: PGE) (formula: C₆H₁₄O₄).



Mol	Chain	Residues	Atoms			ZeroOcc	AltConf
7	A	1	Total	C	O	0	0
			4	2	2		

Continued on next page...

Continued from previous page...

Mol	Chain	Residues	Atoms			ZeroOcc	AltConf
7	B	1	Total	C	O	0	0
			4	2	2		

- Molecule 8 is ACETATE ION (three-letter code: ACT) (formula: $C_2H_3O_2$).



Mol	Chain	Residues	Atoms			ZeroOcc	AltConf
8	A	1	Total	C	O	0	0
			4	2	2		
8	A	1	Total	C	O	0	0
			4	2	2		
8	A	1	Total	C	O	0	0
			4	2	2		
8	C	1	Total	C	O	0	0
			4	2	2		

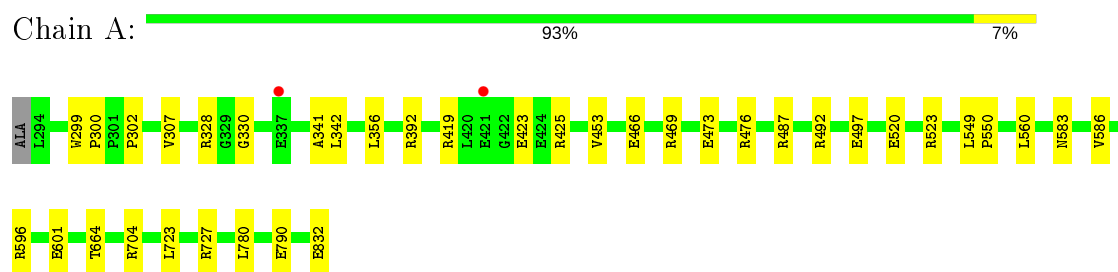
- Molecule 9 is water.

Mol	Chain	Residues	Atoms		ZeroOcc	AltConf
9	A	309	Total	O	0	0
			309	309		
9	B	31	Total	O	0	0
			31	31		
9	C	40	Total	O	0	0
			40	40		

3 Residue-property plots [i](#)

These plots are drawn for all protein, RNA, DNA and oligosaccharide chains in the entry. The first graphic for a chain summarises the proportions of the various outlier classes displayed in the second graphic. The second graphic shows the sequence view annotated by issues in geometry and electron density. Residues are color-coded according to the number of geometric quality criteria for which they contain at least one outlier: green = 0, yellow = 1, orange = 2 and red = 3 or more. A red dot above a residue indicates a poor fit to the electron density ($RSRZ > 2$). Stretches of 2 or more consecutive residues without any outlier are shown as a green connector. Residues present in the sample, but not in the model, are shown in grey.

- Molecule 1: DNA polymerase I, thermostable



- Molecule 2: DNA (5'-D(*GP*AP*CP*CP*AP*CP*GP*GP*CP*GP*CP*(DDG))-3')



- Molecule 3: DNA (5'-D(*AP*AP*AP*GP*CP*GP*CP*GP*CP*CP*GP*TP*GP*GP*TP*C)-3')



4 Data and refinement statistics

Property	Value	Source
Space group	P 31 2 1	Depositor
Cell constants a, b, c, α , β , γ	108.21 Å 108.21 Å 90.40 Å 90.00° 90.00° 120.00°	Depositor
Resolution (Å)	46.86 – 1.80 46.86 – 1.80	Depositor EDS
% Data completeness (in resolution range)	100.0 (46.86-1.80) 100.0 (46.86-1.80)	Depositor EDS
R_{merge}	0.07	Depositor
R_{sym}	(Not available)	Depositor
$\langle I/\sigma(I) \rangle$ ¹	2.02 (at 1.79 Å)	Xtriage
Refinement program	PHENIX (phenix.refine: dev_1009)	Depositor
R, R_{free}	0.155 , 0.182 0.151 , 0.177	Depositor DCC
R_{free} test set	2857 reflections (5.02%)	wwPDB-VP
Wilson B-factor (Å ²)	31.2	Xtriage
Anisotropy	0.108	Xtriage
Bulk solvent k_{sol} (e/Å ³), B_{sol} (Å ²)	0.36 , 45.4	EDS
L-test for twinning ²	$\langle L \rangle = 0.49$, $\langle L^2 \rangle = 0.32$	Xtriage
Estimated twinning fraction	0.029 for -h,-k,l	Xtriage
F_o, F_c correlation	0.98	EDS
Total number of atoms	5412	wwPDB-VP
Average B, all atoms (Å ²)	31.0	wwPDB-VP

Xtriage's analysis on translational NCS is as follows: *The largest off-origin peak in the Patterson function is 4.83% of the height of the origin peak. No significant pseudotranslation is detected.*

¹Intensities estimated from amplitudes.

²Theoretical values of $\langle |L| \rangle$, $\langle L^2 \rangle$ for acentric reflections are 0.5, 0.333 respectively for untwinned datasets, and 0.375, 0.2 for perfectly twinned datasets.

5 Model quality

5.1 Standard geometry

Bond lengths and bond angles in the following residue types are not validated in this section: GOL, MG, PGE, 0R6, ACT, DDG

The Z score for a bond length (or angle) is the number of standard deviations the observed value is removed from the expected value. A bond length (or angle) with $|Z| > 5$ is considered an outlier worth inspection. RMSZ is the root-mean-square of all Z scores of the bond lengths (or angles).

Mol	Chain	Bond lengths		Bond angles	
		RMSZ	$\# Z > 5$	RMSZ	$\# Z > 5$
1	A	0.33	0/4439	0.51	0/6009
2	B	0.74	0/249	1.35	4/382 (1.0%)
3	C	0.70	0/367	1.40	4/565 (0.7%)
All	All	0.40	0/5055	0.70	8/6956 (0.1%)

There are no bond length outliers.

All (8) bond angle outliers are listed below:

Mol	Chain	Res	Type	Atoms	Z	Observed($^{\circ}$)	Ideal($^{\circ}$)
3	C	212	DT	O4'-C1'-N1	-8.19	102.26	108.00
3	C	206	DG	O4'-C4'-C3'	-6.26	101.99	104.50
2	B	108	DG	C1'-O4'-C4'	-6.23	103.87	110.10
3	C	214	DG	O4'-C1'-N9	5.81	112.07	108.00
2	B	106	DC	O4'-C1'-N1	-5.55	104.11	108.00
2	B	108	DG	O4'-C1'-N9	5.35	111.75	108.00
2	B	102	DA	O4'-C1'-N9	5.26	111.68	108.00
3	C	202	DA	C3'-C2'-C1'	-5.25	96.20	102.50

There are no chirality outliers.

There are no planarity outliers.

5.2 Too-close contacts

In the following table, the Non-H and H(model) columns list the number of non-hydrogen atoms and hydrogen atoms in the chain respectively. The H(added) column lists the number of hydrogen atoms added and optimized by MolProbity. The Clashes column lists the number of clashes within the asymmetric unit, whereas Symm-Clashes lists symmetry related clashes.

Mol	Chain	Non-H	H(model)	H(added)	Clashes	Symm-Clashes
1	A	4331	0	4395	22	0
2	B	243	0	134	6	0
3	C	327	0	180	4	0
4	A	38	0	16	0	0
5	A	2	0	0	0	0
5	B	1	0	0	0	0
6	A	36	0	48	1	0
6	B	12	0	16	5	0
6	C	18	0	24	0	0
7	A	4	0	4	0	0
7	B	4	0	4	1	0
8	A	12	0	9	1	0
8	C	4	0	3	2	0
9	A	309	0	0	10	0
9	B	31	0	0	1	0
9	C	40	0	0	3	0
All	All	5412	0	4833	36	0

The all-atom clashscore is defined as the number of clashes found per 1000 atoms (including hydrogen atoms). The all-atom clashscore for this structure is 4.

All (36) close contacts within the same asymmetric unit are listed below, sorted by their clash magnitude.

Atom-1	Atom-2	Interatomic distance (Å)	Clash overlap (Å)
1:A:473:GLU:OE2	1:A:476:ARG:NH1	2.22	0.71
1:A:601[B]:GLU:OE2	9:A:1189:HOH:O	2.08	0.70
3:C:202:DA:N6	9:C:435:HOH:O	2.28	0.66
1:A:302:PRO:HG2	1:A:328:ARG:HD3	1.79	0.64
1:A:392:ARG:NH1	9:A:1195:HOH:O	2.30	0.64
1:A:520:GLU:OE1	1:A:523:ARG:NH1	2.32	0.63
3:C:210:DC:H2'	3:C:211:DG:C8	2.34	0.62
2:B:111:DC:H41	6:B:204:GOL:H32	1.70	0.57
2:B:109:DC:H5'	6:B:203:GOL:H2	1.88	0.56
1:A:492:ARG:NH1	9:A:1230:HOH:O	2.40	0.55
1:A:549:LEU:HD22	1:A:560:LEU:HD21	1.89	0.54
1:A:469[B]:ARG:NH1	9:A:1057:HOH:O	2.40	0.54
6:B:203:GOL:O2	9:B:312:HOH:O	2.19	0.54
1:A:664:THR:HG22	6:B:204:GOL:H12	1.90	0.53
8:C:301:ACT:H2	9:C:434:HOH:O	2.08	0.53
1:A:419:ARG:NH1	9:A:1280:HOH:O	2.34	0.51
6:A:911:GOL:O3	9:A:1046:HOH:O	2.09	0.50
9:A:1265:HOH:O	3:C:203:DA:H8	1.95	0.50

Continued on next page...

Continued from previous page...

Atom-1	Atom-2	Interatomic distance (Å)	Clash overlap (Å)
1:A:330:GLY:N	9:A:1166:HOH:O	2.44	0.50
2:B:108:DG:H4'	6:B:203:GOL:H31	1.93	0.49
1:A:307:VAL:HG13	9:A:1264:HOH:O	2.13	0.47
2:B:104:DC:H2'	2:B:105:DA:C8	2.50	0.46
1:A:780:LEU:HD11	1:A:790:GLU:HB2	1.98	0.45
1:A:299:TRP:CG	1:A:300:PRO:HA	2.52	0.44
1:A:342:LEU:HD21	1:A:356:LEU:HD11	1.99	0.44
1:A:423:GLU:OE1	1:A:727:ARG:NH2	2.51	0.44
3:C:203:DA:H2'	3:C:203:DA:N3	2.33	0.43
1:A:453:VAL:HG13	1:A:550:PRO:HB3	2.01	0.43
1:A:425:ARG:NH2	1:A:723:LEU:O	2.49	0.43
1:A:466[A]:GLU:OE1	1:A:469[A]:ARG:NE	2.43	0.43
8:C:301:ACT:H1	9:C:429:HOH:O	2.20	0.42
1:A:596:ARG:NH2	9:A:1183:HOH:O	2.53	0.42
1:A:299:TRP:CE2	1:A:341:ALA:HB1	2.56	0.40
2:B:103:DC:H2'	2:B:104:DC:C6	2.57	0.40
1:A:497:GLU:OE2	8:A:910:ACT:H2	2.21	0.40
2:B:101:DG:C8	7:B:201:PGE:H42	2.56	0.40

There are no symmetry-related clashes.

5.3 Torsion angles ⓘ

5.3.1 Protein backbone ⓘ

In the following table, the Percentiles column shows the percent Ramachandran outliers of the chain as a percentile score with respect to all X-ray entries followed by that with respect to entries of similar resolution.

The Analysed column shows the number of residues for which the backbone conformation was analysed, and the total number of residues.

Mol	Chain	Analysed	Favoured	Allowed	Outliers	Percentiles
1	A	544/540 (101%)	530 (97%)	13 (2%)	1 (0%)	47 33

All (1) Ramachandran outliers are listed below:

Mol	Chain	Res	Type
1	A	586	VAL

5.3.2 Protein sidechains ⓘ

In the following table, the Percentiles column shows the percent sidechain outliers of the chain as a percentile score with respect to all X-ray entries followed by that with respect to entries of similar resolution.

The Analysed column shows the number of residues for which the sidechain conformation was analysed, and the total number of residues.

Mol	Chain	Analysed	Rotameric	Outliers	Percentiles
1	A	448/441 (102%)	443 (99%)	5 (1%)	73 68

All (5) residues with a non-rotameric sidechain are listed below:

Mol	Chain	Res	Type
1	A	487	ARG
1	A	583	ASN
1	A	704[A]	ARG
1	A	704[B]	ARG
1	A	832	GLU

Some sidechains can be flipped to improve hydrogen bonding and reduce clashes. All (1) such sidechains are listed below:

Mol	Chain	Res	Type
1	A	583	ASN

5.3.3 RNA ⓘ

There are no RNA molecules in this entry.

5.4 Non-standard residues in protein, DNA, RNA chains ⓘ

1 non-standard protein/DNA/RNA residue is modelled in this entry.

In the following table, the Counts columns list the number of bonds (or angles) for which Mogul statistics could be retrieved, the number of bonds (or angles) that are observed in the model and the number of bonds (or angles) that are defined in the Chemical Component Dictionary. The Link column lists molecule types, if any, to which the group is linked. The Z score for a bond length (or angle) is the number of standard deviations the observed value is removed from the expected value. A bond length (or angle) with $|Z| > 2$ is considered an outlier worth inspection. RMSZ is the root-mean-square of all Z scores of the bond lengths (or angles).

Mol	Type	Chain	Res	Link	Bond lengths			Bond angles		
					Counts	RMSZ	# Z > 2	Counts	RMSZ	# Z > 2
2	DDG	B	112	3,2	17,23,24	1.29	2 (11%)	15,33,36	2.31	5 (33%)

In the following table, the Chirals column lists the number of chiral outliers, the number of chiral centers analysed, the number of these observed in the model and the number defined in the Chemical Component Dictionary. Similar counts are reported in the Torsion and Rings columns. '-' means no outliers of that kind were identified.

Mol	Type	Chain	Res	Link	Chirals	Torsions	Rings
2	DDG	B	112	3,2	-	0/3/18/19	0/3/3/3

All (2) bond length outliers are listed below:

Mol	Chain	Res	Type	Atoms	Z	Observed(Å)	Ideal(Å)
2	B	112	DDG	C6-C5	4.14	1.48	1.41
2	B	112	DDG	C5-C4	2.28	1.47	1.40

All (5) bond angle outliers are listed below:

Mol	Chain	Res	Type	Atoms	Z	Observed(°)	Ideal(°)
2	B	112	DDG	C6-C5-C4	-4.45	116.55	120.80
2	B	112	DDG	C6-N1-C2	3.76	121.90	115.93
2	B	112	DDG	C5-C6-N1	-3.75	118.31	123.43
2	B	112	DDG	C2-N3-C4	3.61	119.48	115.36
2	B	112	DDG	N3-C2-N1	-2.86	123.41	127.22

There are no chirality outliers.

There are no torsion outliers.

There are no ring outliers.

No monomer is involved in short contacts.

5.5 Carbohydrates [i](#)

There are no monosaccharides in this entry.

5.6 Ligand geometry [i](#)

Of 21 ligands modelled in this entry, 3 are monoatomic - leaving 18 for Mogul analysis.

In the following table, the Counts columns list the number of bonds (or angles) for which Mogul statistics could be retrieved, the number of bonds (or angles) that are observed in the model and the number of bonds (or angles) that are defined in the Chemical Component Dictionary. The Link column lists molecule types, if any, to which the group is linked. The Z score for a bond length (or angle) is the number of standard deviations the observed value is removed from the expected value. A bond length (or angle) with $|Z| > 2$ is considered an outlier worth inspection. RMSZ is the root-mean-square of all Z scores of the bond lengths (or angles).

Mol	Type	Chain	Res	Link	Bond lengths			Bond angles		
					Counts	RMSZ	$\# Z > 2$	Counts	RMSZ	$\# Z > 2$
6	GOL	A	912	-	5,5,5	0.37	0	5,5,5	0.24	0
6	GOL	B	203	-	5,5,5	0.39	0	5,5,5	0.25	0
6	GOL	A	904	-	5,5,5	0.39	0	5,5,5	0.74	0
8	ACT	A	908	-	1,3,3	1.50	0	0,3,3	0.00	-
6	GOL	A	907	-	5,5,5	0.33	0	5,5,5	0.29	0
8	ACT	A	913	-	1,3,3	1.59	0	0,3,3	0.00	-
6	GOL	A	909	-	5,5,5	0.40	0	5,5,5	0.25	0
6	GOL	C	304	-	5,5,5	0.39	0	5,5,5	0.53	0
7	PGE	B	201	-	3,3,9	0.42	0	2,2,8	0.26	0
6	GOL	C	303	-	5,5,5	0.36	0	5,5,5	0.41	0
8	ACT	A	910	-	1,3,3	1.55	0	0,3,3	0.00	-
6	GOL	A	905	-	5,5,5	0.31	0	5,5,5	0.38	0
6	GOL	A	911	-	5,5,5	0.37	0	5,5,5	0.42	0
4	0R6	A	901	5	33,40,40	2.20	5 (15%)	42,60,60	1.37	4 (9%)
6	GOL	B	204	-	5,5,5	0.30	0	5,5,5	0.45	0
6	GOL	C	302	-	5,5,5	0.37	0	5,5,5	0.34	0
8	ACT	C	301	-	1,3,3	0.33	0	0,3,3	0.00	-
7	PGE	A	906	-	3,3,9	0.45	0	2,2,8	0.18	0

In the following table, the Chirals column lists the number of chiral outliers, the number of chiral centers analysed, the number of these observed in the model and the number defined in the Chemical Component Dictionary. Similar counts are reported in the Torsion and Rings columns. '-' means no outliers of that kind were identified.

Mol	Type	Chain	Res	Link	Chirals	Torsions	Rings
6	GOL	A	912	-	-	3/4/4/4	-
6	GOL	B	203	-	-	1/4/4/4	-
6	GOL	A	904	-	-	2/4/4/4	-
6	GOL	A	907	-	-	2/4/4/4	-
6	GOL	C	304	-	-	1/4/4/4	-
7	PGE	B	201	-	-	0/1/1/7	-
6	GOL	C	303	-	-	3/4/4/4	-
6	GOL	A	909	-	-	2/4/4/4	-
6	GOL	A	905	-	-	0/4/4/4	-

Continued on next page...

Continued from previous page...

Mol	Type	Chain	Res	Link	Chirals	Torsions	Rings
6	GOL	A	911	-	-	4/4/4/4	-
4	0R6	A	901	5	-	5/26/41/41	0/3/3/3
6	GOL	B	204	-	-	2/4/4/4	-
6	GOL	C	302	-	-	2/4/4/4	-
7	PGE	A	906	-	-	1/1/1/7	-

All (5) bond length outliers are listed below:

Mol	Chain	Res	Type	Atoms	Z	Observed(Å)	Ideal(Å)
4	A	901	0R6	C34-C37	-6.95	1.29	1.44
4	A	901	0R6	C5-C29	-6.77	1.31	1.43
4	A	901	0R6	C31-C30	-5.09	1.32	1.44
4	A	901	0R6	C5-C4	4.69	1.48	1.43
4	A	901	0R6	C37-C38	2.87	1.28	1.17

All (4) bond angle outliers are listed below:

Mol	Chain	Res	Type	Atoms	Z	Observed(°)	Ideal(°)
4	A	901	0R6	C2'-C1'-N1	-4.42	104.07	114.27
4	A	901	0R6	C2-N3-C4	3.69	120.47	116.02
4	A	901	0R6	C6-C5-C29	3.68	123.98	118.69
4	A	901	0R6	N4-C4-N3	2.04	119.91	117.03

There are no chirality outliers.

All (28) torsion outliers are listed below:

Mol	Chain	Res	Type	Atoms
6	A	912	GOL	O1-C1-C2-C3
6	A	904	GOL	O1-C1-C2-C3
6	C	303	GOL	C1-C2-C3-O3
6	C	302	GOL	O1-C1-C2-O2
6	C	302	GOL	O1-C1-C2-C3
6	A	909	GOL	O1-C1-C2-C3
6	A	911	GOL	O1-C1-C2-C3
6	A	911	GOL	C1-C2-C3-O3
4	A	901	0R6	C30-C29-C5-C4
4	A	901	0R6	PB-O3B-PG-O3G
6	B	204	GOL	C1-C2-C3-O3
6	A	912	GOL	O1-C1-C2-O2
6	A	904	GOL	O1-C1-C2-O2

Continued on next page...

Continued from previous page...

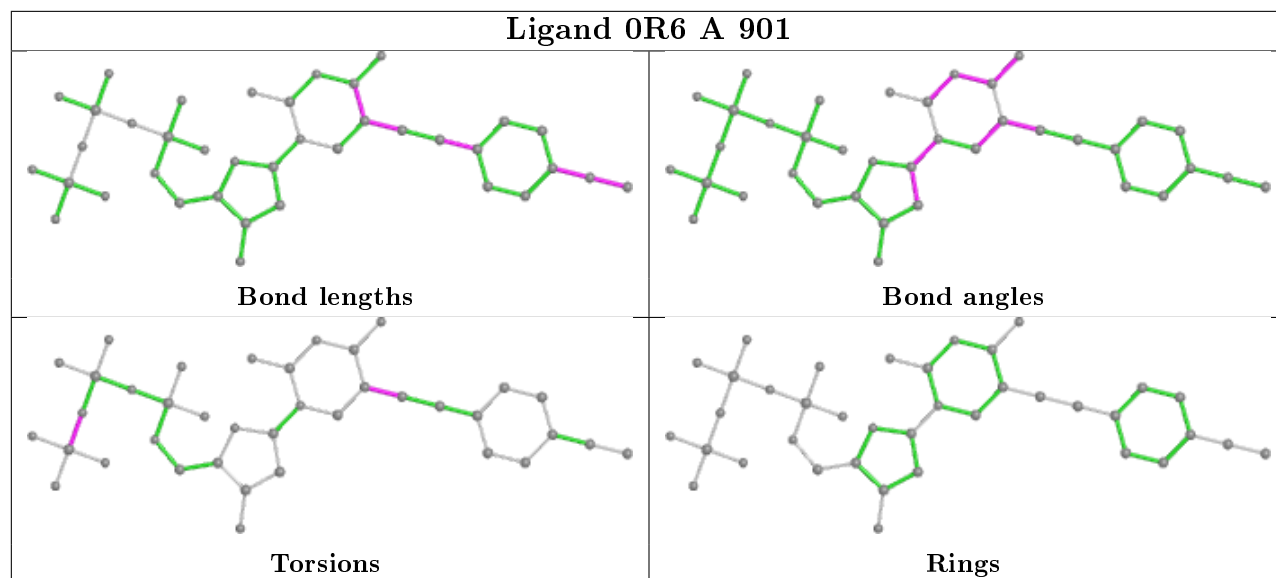
Mol	Chain	Res	Type	Atoms
6	B	204	GOL	O2-C2-C3-O3
4	A	901	0R6	C30-C29-C5-C6
6	B	203	GOL	C1-C2-C3-O3
6	A	907	GOL	O1-C1-C2-C3
6	A	909	GOL	O1-C1-C2-O2
6	A	911	GOL	O2-C2-C3-O3
6	C	303	GOL	O2-C2-C3-O3
6	A	911	GOL	O1-C1-C2-O2
6	A	907	GOL	O1-C1-C2-O2
7	A	906	PGE	O2-C3-C4-O3
6	C	303	GOL	O1-C1-C2-C3
6	A	912	GOL	O2-C2-C3-O3
6	C	304	GOL	C1-C2-C3-O3
4	A	901	0R6	PB-O3B-PG-O2G
4	A	901	0R6	PB-O3B-PG-O1G

There are no ring outliers.

6 monomers are involved in 10 short contacts:

Mol	Chain	Res	Type	Clashes	Symm-Clashes
6	B	203	GOL	3	0
7	B	201	PGE	1	0
8	A	910	ACT	1	0
6	A	911	GOL	1	0
6	B	204	GOL	2	0
8	C	301	ACT	2	0

The following is a two-dimensional graphical depiction of Mogul quality analysis of bond lengths, bond angles, torsion angles, and ring geometry for all instances of the Ligand of Interest. In addition, ligands with molecular weight > 250 and outliers as shown on the validation Tables will also be included. For torsion angles, if less than 5% of the Mogul distribution of torsion angles is within 10 degrees of the torsion angle in question, then that torsion angle is considered an outlier. Any bond that is central to one or more torsion angles identified as an outlier by Mogul will be highlighted in the graph. For rings, the root-mean-square deviation (RMSD) between the ring in question and similar rings identified by Mogul is calculated over all ring torsion angles. If the average RMSD is greater than 60 degrees and the minimal RMSD between the ring in question and any Mogul-identified rings is also greater than 60 degrees, then that ring is considered an outlier. The outliers are highlighted in purple. The color gray indicates Mogul did not find sufficient equivalents in the CSD to analyse the geometry.



5.7 Other polymers [i](#)

There are no such residues in this entry.

5.8 Polymer linkage issues [i](#)

There are no chain breaks in this entry.

6 Fit of model and data [i](#)

6.1 Protein, DNA and RNA chains [i](#)

In the following table, the column labelled ‘#RSRZ> 2’ contains the number (and percentage) of RSRZ outliers, followed by percent RSRZ outliers for the chain as percentile scores relative to all X-ray entries and entries of similar resolution. The OWAB column contains the minimum, median, 95th percentile and maximum values of the occupancy-weighted average B-factor per residue. The column labelled ‘Q< 0.9’ lists the number of (and percentage) of residues with an average occupancy less than 0.9.

Mol	Chain	Analysed	<RSRZ>	#RSRZ>2	OWAB(Å ²)	Q<0.9
1	A	539/540 (99%)	-0.48	2 (0%) 92 90	16, 28, 51, 76	0
2	B	11/12 (91%)	-0.68	0 100 100	16, 22, 47, 49	0
3	C	16/16 (100%)	-0.49	0 100 100	18, 22, 50, 72	0
All	All	566/568 (99%)	-0.49	2 (0%) 92 90	16, 28, 51, 76	0

All (2) RSRZ outliers are listed below:

Mol	Chain	Res	Type	RSRZ
1	A	337	GLU	2.6
1	A	421	GLU	2.4

6.2 Non-standard residues in protein, DNA, RNA chains [i](#)

In the following table, the Atoms column lists the number of modelled atoms in the group and the number defined in the chemical component dictionary. The B-factors column lists the minimum, median, 95th percentile and maximum values of B factors of atoms in the group. The column labelled ‘Q< 0.9’ lists the number of atoms with occupancy less than 0.9.

Mol	Type	Chain	Res	Atoms	RSCC	RSR	B-factors(Å ²)	Q<0.9
2	DDG	B	112	21/22	0.98	0.08	13,17,18,19	0

6.3 Carbohydrates [i](#)

There are no monosaccharides in this entry.

6.4 Ligands [i](#)

In the following table, the Atoms column lists the number of modelled atoms in the group and the number defined in the chemical component dictionary. The B-factors column lists the minimum,

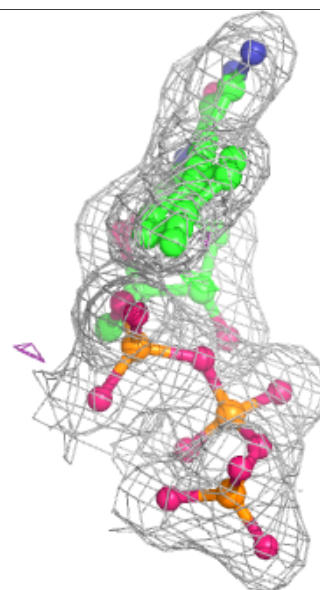
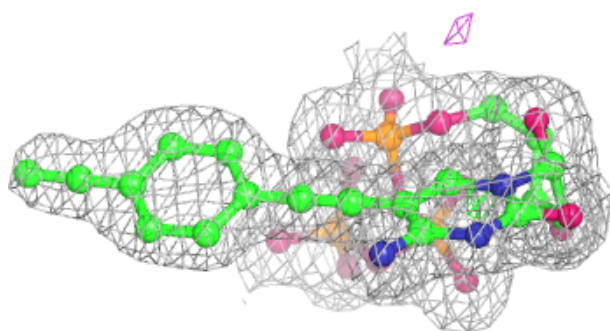
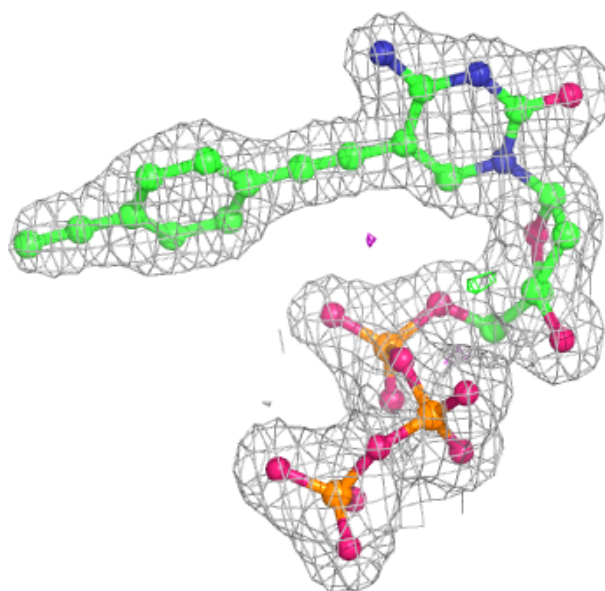
median, 95th percentile and maximum values of B factors of atoms in the group. The column labelled 'Q< 0.9' lists the number of atoms with occupancy less than 0.9.

Mol	Type	Chain	Res	Atoms	RSCC	RSR	B-factors(Å ²)	Q<0.9
8	ACT	C	301	4/4	0.65	0.23	48,53,54,57	0
7	PGE	A	906	4/10	0.71	0.14	44,52,57,58	0
8	ACT	A	910	4/4	0.74	0.21	57,60,62,64	0
6	GOL	A	912	6/6	0.77	0.18	57,70,72,73	0
6	GOL	C	303	6/6	0.82	0.24	53,60,63,64	0
6	GOL	B	204	6/6	0.82	0.20	21,55,57,60	0
7	PGE	B	201	4/10	0.84	0.27	43,52,53,61	0
6	GOL	B	203	6/6	0.84	0.26	32,55,61,62	0
6	GOL	A	909	6/6	0.85	0.23	68,70,72,74	0
5	MG	B	202	1/1	0.85	0.11	50,50,50,50	0
6	GOL	C	302	6/6	0.90	0.10	53,55,57,58	0
8	ACT	A	913	4/4	0.90	0.19	53,62,63,65	0
8	ACT	A	908	4/4	0.91	0.14	57,59,61,62	0
6	GOL	A	911	6/6	0.94	0.17	48,53,62,62	0
6	GOL	C	304	6/6	0.95	0.15	29,37,51,52	0
6	GOL	A	907	6/6	0.95	0.10	37,42,44,47	0
6	GOL	A	905	6/6	0.97	0.11	24,30,31,35	0
6	GOL	A	904	6/6	0.98	0.09	23,26,33,35	0
5	MG	A	902	1/1	0.99	0.04	18,18,18,18	0
4	0R6	A	901	38/38	0.99	0.07	16,19,26,37	0
5	MG	A	903	1/1	0.99	0.05	22,22,22,22	0

The following is a graphical depiction of the model fit to experimental electron density of all instances of the Ligand of Interest. In addition, ligands with molecular weight > 250 and outliers as shown on the geometry validation Tables will also be included. Each fit is shown from different orientation to approximate a three-dimensional view.

Electron density around 0R6 A 901:

$2mF_o-DF_c$ (at 0.7 rmsd) in gray
 mF_o-DF_c (at 3 rmsd) in purple (negative)
and green (positive)



6.5 Other polymers ⓘ

There are no such residues in this entry.