



Full wwPDB X-ray Structure Validation Report ⓘ

Sep 13, 2020 – 07:25 PM BST

PDB ID : 5ELM
Title : Crystal structure of L-aspartate/glutamate specific racemase in complex with L-glutamate
Authors : Ahn, J.W.; Chang, J.H.; Kim, K.J.
Deposited on : 2015-11-04
Resolution : 2.00 Å(reported)

This is a Full wwPDB X-ray Structure Validation Report for a publicly released PDB entry.

We welcome your comments at validation@mail.wwpdb.org

A user guide is available at

<https://www.wwpdb.org/validation/2017/XrayValidationReportHelp>

with specific help available everywhere you see the ⓘ symbol.

The following versions of software and data (see [references ⓘ](#)) were used in the production of this report:

MolProbity : 4.02b-467
Mogul : 1.8.5 (274361), CSD as541be (2020)
Xtriage (Phenix) : 1.13
EDS : 2.14.4.dev1
Percentile statistics : 20191225.v01 (using entries in the PDB archive December 25th 2019)
Refmac : 5.8.0158
CCP4 : 7.0.044 (Gargrove)
Ideal geometry (proteins) : Engh & Huber (2001)
Ideal geometry (DNA, RNA) : Parkinson et al. (1996)
Validation Pipeline (wwPDB-VP) : 2.14.4.dev1

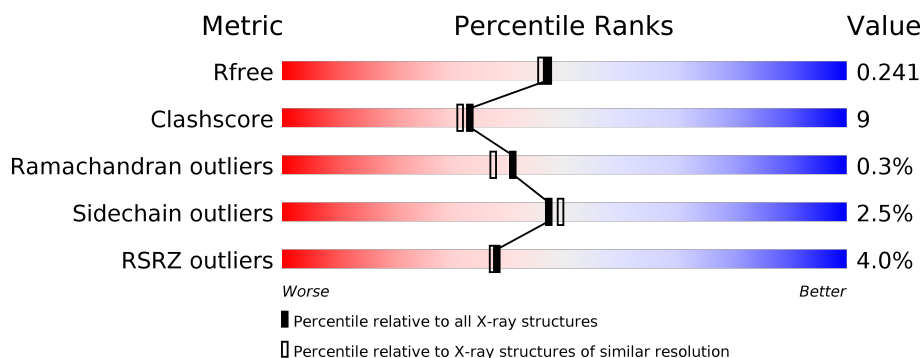
1 Overall quality at a glance

The following experimental techniques were used to determine the structure:

X-RAY DIFFRACTION

The reported resolution of this entry is 2.00 Å.

Percentile scores (ranging between 0-100) for global validation metrics of the entry are shown in the following graphic. The table shows the number of entries on which the scores are based.



Metric	Whole archive (#Entries)	Similar resolution (#Entries, resolution range(Å))
R_{free}	130704	8085 (2.00-2.00)
Clashscore	141614	9178 (2.00-2.00)
Ramachandran outliers	138981	9054 (2.00-2.00)
Sidechain outliers	138945	9053 (2.00-2.00)
RSRZ outliers	127900	7900 (2.00-2.00)

The table below summarises the geometric issues observed across the polymeric chains and their fit to the electron density. The red, orange, yellow and green segments on the lower bar indicate the fraction of residues that contain outliers for ≥ 3 , 2, 1 and 0 types of geometric quality criteria respectively. A grey segment represents the fraction of residues that are not modelled. The numeric value for each fraction is indicated below the corresponding segment, with a dot representing fractions $\leq 5\%$. The upper red bar (where present) indicates the fraction of residues that have poor fit to the electron density. The numeric value is given above the bar.

Mol	Chain	Length	Quality of chain
1	A	238	<div> <div style="width: 100%; height: 10px; background: linear-gradient(to right, red 1%, orange 1%, yellow 1%, green 98%);"></div> <div style="display: flex; justify-content: space-between; margin-top: 5px;"> % 91% 8% . </div> </div>
1	B	238	<div> <div style="width: 100%; height: 10px; background: linear-gradient(to right, red 5%, orange 1%, yellow 1%, green 93%);"></div> <div style="display: flex; justify-content: space-between; margin-top: 5px;"> 5% 79% 18% .. </div> </div>
1	C	238	<div> <div style="width: 100%; height: 10px; background: linear-gradient(to right, red 10%, orange 1%, yellow 1%, green 88%);"></div> <div style="display: flex; justify-content: space-between; margin-top: 5px;"> 10% 79% 18% .. </div> </div>
1	D	238	<div> <div style="width: 100%; height: 10px; background: linear-gradient(to right, red 0%, orange 0%, yellow 1%, green 99%);"></div> <div style="display: flex; justify-content: space-between; margin-top: 5px;"> 85% 13% .. </div> </div>

The following table lists non-polymeric compounds, carbohydrate monomers and non-standard residues in protein, DNA, RNA chains that are outliers for geometric or electron-density-fit crite-

ria:

Mol	Type	Chain	Res	Chirality	Geometry	Clashes	Electron density
3	GLU	C	301	-	-	X	-
3	GLU	D	301	-	-	X	-

2 Entry composition

There are 5 unique types of molecules in this entry. The entry contains 7990 atoms, of which 0 are hydrogens and 0 are deuteriums.

In the tables below, the ZeroOcc column contains the number of atoms modelled with zero occupancy, the AltConf column contains the number of residues with at least one atom in alternate conformation and the Trace column contains the number of residues modelled with at most 2 atoms.

- Molecule 1 is a protein called Asp/Glu_racemase family protein.

Mol	Chain	Residues	Atoms					ZeroOcc	AltConf	Trace
1	A	235	Total	C	N	O	S	0	0	0
			1821	1147	320	343	11			
1	B	235	Total	C	N	O	S	0	2	0
			1834	1157	323	343	11			
1	C	235	Total	C	N	O	S	0	1	0
			1832	1153	324	344	11			
1	D	235	Total	C	N	O	S	0	4	0
			1868	1173	337	347	11			

There are 36 discrepancies between the modelled and reference sequences:

Chain	Residue	Modelled	Actual	Comment	Reference
A	197	SER	CYS	conflict	UNP C3SWD2
A	231	LEU	-	expression tag	UNP C3SWD2
A	232	GLU	-	expression tag	UNP C3SWD2
A	233	HIS	-	expression tag	UNP C3SWD2
A	234	HIS	-	expression tag	UNP C3SWD2
A	235	HIS	-	expression tag	UNP C3SWD2
A	236	HIS	-	expression tag	UNP C3SWD2
A	237	HIS	-	expression tag	UNP C3SWD2
A	238	HIS	-	expression tag	UNP C3SWD2
B	197	SER	CYS	conflict	UNP C3SWD2
B	231	LEU	-	expression tag	UNP C3SWD2
B	232	GLU	-	expression tag	UNP C3SWD2
B	233	HIS	-	expression tag	UNP C3SWD2
B	234	HIS	-	expression tag	UNP C3SWD2
B	235	HIS	-	expression tag	UNP C3SWD2
B	236	HIS	-	expression tag	UNP C3SWD2
B	237	HIS	-	expression tag	UNP C3SWD2
B	238	HIS	-	expression tag	UNP C3SWD2
C	197	SER	CYS	conflict	UNP C3SWD2
C	231	LEU	-	expression tag	UNP C3SWD2
C	232	GLU	-	expression tag	UNP C3SWD2

Continued on next page...

Continued from previous page...

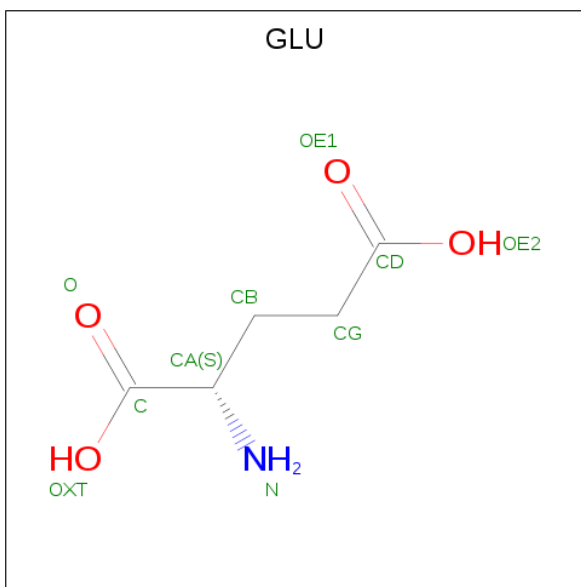
Chain	Residue	Modelled	Actual	Comment	Reference
C	233	HIS	-	expression tag	UNP C3SWD2
C	234	HIS	-	expression tag	UNP C3SWD2
C	235	HIS	-	expression tag	UNP C3SWD2
C	236	HIS	-	expression tag	UNP C3SWD2
C	237	HIS	-	expression tag	UNP C3SWD2
C	238	HIS	-	expression tag	UNP C3SWD2
D	197	SER	CYS	conflict	UNP C3SWD2
D	231	LEU	-	expression tag	UNP C3SWD2
D	232	GLU	-	expression tag	UNP C3SWD2
D	233	HIS	-	expression tag	UNP C3SWD2
D	234	HIS	-	expression tag	UNP C3SWD2
D	235	HIS	-	expression tag	UNP C3SWD2
D	236	HIS	-	expression tag	UNP C3SWD2
D	237	HIS	-	expression tag	UNP C3SWD2
D	238	HIS	-	expression tag	UNP C3SWD2

- Molecule 2 is GLYCEROL (three-letter code: GOL) (formula: $C_3H_8O_3$).



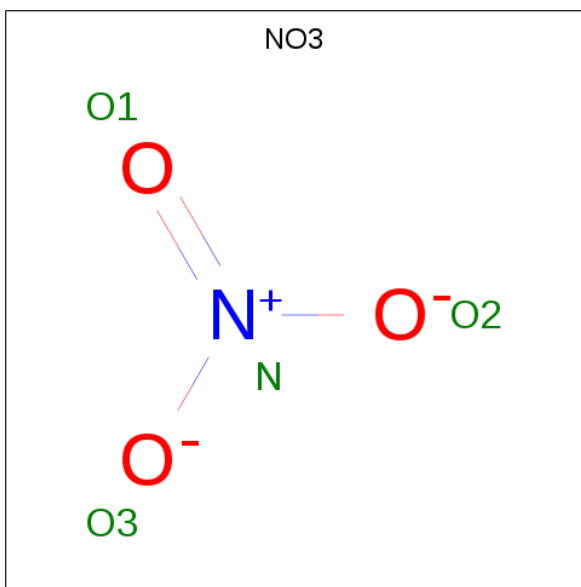
Mol	Chain	Residues	Atoms			ZeroOcc	AltConf
2	A	1	Total	C	O	0	0
			6	3	3		
2	D	1	Total	C	O	0	0
			6	3	3		

- Molecule 3 is GLUTAMIC ACID (three-letter code: GLU) (formula: $C_5H_9NO_4$).



Mol	Chain	Residues	Atoms				ZeroOcc	AltConf
3	B	1	Total	C	N	O	0	0
			10	5	1	4		
3	C	1	Total	C	N	O	0	0
			10	5	1	4		
3	D	1	Total	C	N	O	0	0
			10	5	1	4		

- Molecule 4 is NITRATE ION (three-letter code: NO3) (formula: NO₃).



Mol	Chain	Residues	Atoms			ZeroOcc	AltConf
4	D	1	Total	N	O	0	0
			4	1	3		

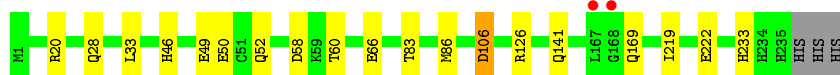
- Molecule 5 is water.

Mol	Chain	Residues	Atoms		ZeroOcc	AltConf
5	A	156	Total 156	O 156	0	0
5	B	124	Total 124	O 124	0	0
5	C	136	Total 136	O 136	0	0
5	D	173	Total 173	O 173	0	0

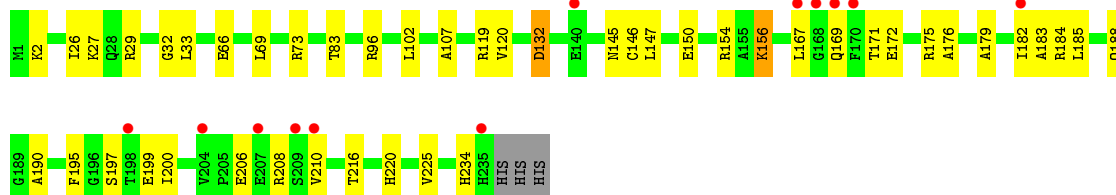
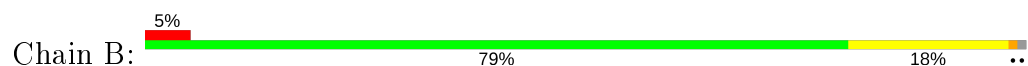
3 Residue-property plots

These plots are drawn for all protein, RNA, DNA and oligosaccharide chains in the entry. The first graphic for a chain summarises the proportions of the various outlier classes displayed in the second graphic. The second graphic shows the sequence view annotated by issues in geometry and electron density. Residues are color-coded according to the number of geometric quality criteria for which they contain at least one outlier: green = 0, yellow = 1, orange = 2 and red = 3 or more. A red dot above a residue indicates a poor fit to the electron density ($RSRZ > 2$). Stretches of 2 or more consecutive residues without any outlier are shown as a green connector. Residues present in the sample, but not in the model, are shown in grey.

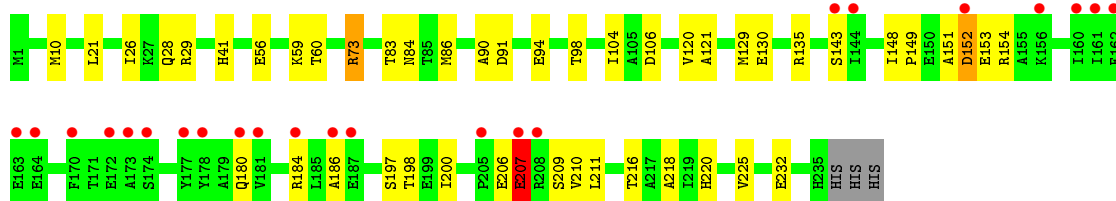
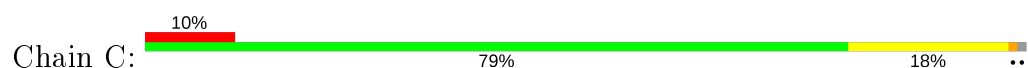
- Molecule 1: Asp/Glu_racemase family protein



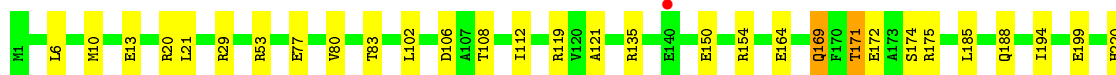
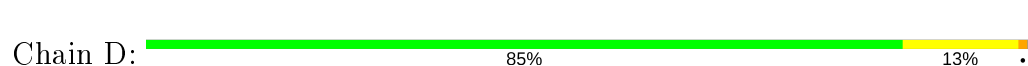
- Molecule 1: Asp/Glu_racemase family protein



- Molecule 1: Asp/Glu_racemase family protein



- Molecule 1: Asp/Glu_racemase family protein





4 Data and refinement statistics

Property	Value	Source
Space group	P 1 21 1	Depositor
Cell constants a, b, c, α , β , γ	67.53Å 81.25Å 83.96Å 90.00° 111.39° 90.00°	Depositor
Resolution (Å)	29.32 – 2.00 29.32 – 2.00	Depositor EDS
% Data completeness (in resolution range)	98.1 (29.32-2.00) 98.1 (29.32-2.00)	Depositor EDS
R_{merge}	(Not available)	Depositor
R_{sym}	(Not available)	Depositor
$\langle I/\sigma(I) \rangle$ ¹	5.50 (at 2.00Å)	Xtriage
Refinement program	REFMAC 5.7.0032	Depositor
R, R_{free}	0.173 , 0.236 0.182 , 0.241	Depositor DCC
R_{free} test set	2833 reflections (5.05%)	wwPDB-VP
Wilson B-factor (Å ²)	16.4	Xtriage
Anisotropy	0.223	Xtriage
Bulk solvent k_{sol} (e/Å ³), B_{sol} (Å ²)	0.39 , 58.9	EDS
L-test for twinning ²	$\langle L \rangle = 0.43$, $\langle L^2 \rangle = 0.26$	Xtriage
Estimated twinning fraction	0.046 for h,-k,-h-l	Xtriage
F_o, F_c correlation	0.93	EDS
Total number of atoms	7990	wwPDB-VP
Average B, all atoms (Å ²)	21.0	wwPDB-VP

Xtriage's analysis on translational NCS is as follows: *The largest off-origin peak in the Patterson function is 4.45% of the height of the origin peak. No significant pseudotranslation is detected.*

¹Intensities estimated from amplitudes.

²Theoretical values of $\langle |L| \rangle$, $\langle L^2 \rangle$ for acentric reflections are 0.5, 0.333 respectively for untwinned datasets, and 0.375, 0.2 for perfectly twinned datasets.

5 Model quality

5.1 Standard geometry

Bond lengths and bond angles in the following residue types are not validated in this section: GOL, NO3

The Z score for a bond length (or angle) is the number of standard deviations the observed value is removed from the expected value. A bond length (or angle) with $|Z| > 5$ is considered an outlier worth inspection. RMSZ is the root-mean-square of all Z scores of the bond lengths (or angles).

Mol	Chain	Bond lengths		Bond angles	
		RMSZ	# Z >5	RMSZ	# Z >5
1	A	0.90	0/1853	0.91	2/2505 (0.1%)
1	B	0.80	0/1866	0.85	1/2522 (0.0%)
1	C	0.81	0/1864	0.88	2/2519 (0.1%)
1	D	0.92	0/1900	0.94	3/2565 (0.1%)
All	All	0.86	0/7483	0.90	8/10111 (0.1%)

Chiral center outliers are detected by calculating the chiral volume of a chiral center and verifying if the center is modelled as a planar moiety or with the opposite hand. A planarity outlier is detected by checking planarity of atoms in a peptide group, atoms in a mainchain group or atoms of a sidechain that are expected to be planar.

Mol	Chain	#Chirality outliers	#Planarity outliers
1	B	0	1
1	C	0	1
All	All	0	2

There are no bond length outliers.

All (8) bond angle outliers are listed below:

Mol	Chain	Res	Type	Atoms	Z	Observed(°)	Ideal(°)
1	C	106	ASP	CB-CG-OD1	6.45	124.11	118.30
1	D	29	ARG	NE-CZ-NH1	-5.96	117.32	120.30
1	D	175	ARG	NE-CZ-NH1	5.60	123.10	120.30
1	C	73	ARG	NE-CZ-NH2	-5.55	117.52	120.30
1	A	126	ARG	NE-CZ-NH2	-5.46	117.57	120.30
1	D	29	ARG	NE-CZ-NH2	5.25	122.92	120.30
1	A	106	ASP	CB-CG-OD1	5.25	123.02	118.30
1	B	73	ARG	NE-CZ-NH1	5.05	122.82	120.30

There are no chirality outliers.

All (2) planarity outliers are listed below:

Mol	Chain	Res	Type	Group
1	B	234	HIS	Peptide
1	C	207	GLU	Peptide

5.2 Too-close contacts

In the following table, the Non-H and H(model) columns list the number of non-hydrogen atoms and hydrogen atoms in the chain respectively. The H(added) column lists the number of hydrogen atoms added and optimized by MolProbity. The Clashes column lists the number of clashes within the asymmetric unit, whereas Symm-Clashes lists symmetry related clashes.

Mol	Chain	Non-H	H(model)	H(added)	Clashes	Symm-Clashes
1	A	1821	0	1805	19	0
1	B	1834	0	1823	35	0
1	C	1832	0	1817	38	0
1	D	1868	0	1850	38	0
2	A	6	0	8	0	0
2	D	6	0	8	3	0
3	B	10	0	5	3	0
3	C	10	0	5	4	0
3	D	10	0	5	4	0
4	D	4	0	0	0	0
5	A	156	0	0	9	0
5	B	124	0	0	7	3
5	C	136	0	0	8	1
5	D	173	0	0	5	2
All	All	7990	0	7326	127	3

The all-atom clashscore is defined as the number of clashes found per 1000 atoms (including hydrogen atoms). The all-atom clashscore for this structure is 9.

All (127) close contacts within the same asymmetric unit are listed below, sorted by their clash magnitude.

Atom-1	Atom-2	Interatomic distance (Å)	Clash overlap (Å)
1:D:172[B]:GLU:N	1:D:172[B]:GLU:OE2	1.70	1.25
1:D:13:GLU:HG2	5:D:488:HOH:O	1.47	1.10
1:C:135:ARG:HD3	5:C:464:HOH:O	1.58	1.04
1:A:66:GLU:OE1	5:A:401:HOH:O	1.83	0.95
1:A:60:THR:HG21	1:A:86:MET:HE1	1.52	0.92
1:D:171:THR:HG21	5:D:461:HOH:O	1.72	0.88

Continued on next page...

Continued from previous page...

Atom-1	Atom-2	Interatomic distance (Å)	Clash overlap (Å)
1:A:233:HIS:O	5:A:402:HOH:O	1.92	0.88
1:D:20[B]:ARG:HH21	1:D:20[B]:ARG:CG	1.87	0.87
1:D:20[B]:ARG:HG2	1:D:20[B]:ARG:HH21	1.40	0.87
1:C:60:THR:HG21	1:C:86:MET:HE1	1.57	0.86
1:C:60:THR:CG2	1:C:86:MET:HE1	2.05	0.86
1:C:60:THR:CG2	1:C:86:MET:CE	2.56	0.84
1:C:60:THR:HG21	1:C:86:MET:CE	2.10	0.80
1:D:77:GLU:OE1	5:D:401:HOH:O	2.01	0.76
1:C:98:THR:OG1	5:C:401:HOH:O	2.04	0.76
1:D:199:GLU:OE2	3:D:301:GLU:HA	1.86	0.75
1:D:171:THR:CG2	1:D:174:SER:H	2.01	0.73
1:C:152:ASP:OD1	1:C:152:ASP:N	2.23	0.71
1:D:171:THR:HG22	1:D:174:SER:HB2	1.73	0.71
1:D:20[B]:ARG:CB	1:D:20[B]:ARG:HH21	2.04	0.70
1:B:2[A]:LYS:HE3	5:B:437:HOH:O	1.91	0.70
1:D:172[B]:GLU:CA	1:D:172[B]:GLU:OE2	2.40	0.70
1:D:20[A]:ARG:NH2	5:D:402:HOH:O	2.16	0.69
1:A:60:THR:HG21	1:A:86:MET:CE	2.21	0.69
1:D:20[B]:ARG:NH2	1:D:20[B]:ARG:HG2	2.04	0.68
1:A:33:LEU:HD21	5:B:470:HOH:O	1.93	0.68
1:A:28:GLN:OE1	5:A:403:HOH:O	2.10	0.67
1:B:27:LYS:HE3	1:B:32:GLY:O	1.94	0.67
1:D:20[B]:ARG:HB3	1:D:20[B]:ARG:HH21	1.61	0.65
1:D:20[B]:ARG:NH2	1:D:21:LEU:HG	2.12	0.65
1:D:199:GLU:OE2	3:D:301:GLU:CA	2.46	0.64
1:B:27:LYS:CE	1:B:32:GLY:O	2.46	0.64
1:A:58:ASP:HB2	5:A:514:HOH:O	2.01	0.61
1:C:198:THR:H	3:C:301:GLU:N	1.98	0.61
1:C:84:ASN:H	3:C:301:GLU:N	1.99	0.60
1:D:13:GLU:CG	5:D:488:HOH:O	2.25	0.60
1:B:107:ALA:HB2	5:B:406:HOH:O	2.03	0.59
1:D:199:GLU:OE2	3:D:301:GLU:N	2.36	0.59
1:C:60:THR:HG23	1:C:86:MET:HE1	1.84	0.59
1:B:150:GLU:OE1	1:B:150:GLU:HA	2.03	0.58
1:B:195:PHE:CD2	1:B:200:ILE:HG22	2.37	0.58
1:B:169:GLN:HE21	1:B:171:THR:HG21	1.67	0.58
1:B:132:ASP:N	1:B:132:ASP:OD1	2.37	0.58
1:C:198:THR:HG1	3:C:301:GLU:N	2.03	0.56
3:B:301:GLU:N	5:B:405:HOH:O	2.40	0.55
1:D:20[B]:ARG:NH2	1:D:20[B]:ARG:HB3	2.21	0.55
1:D:20[B]:ARG:HH22	1:D:21:LEU:HG	1.72	0.54

Continued on next page...

Continued from previous page...

Atom-1	Atom-2	Interatomic distance (Å)	Clash overlap (Å)
1:B:199:GLU:OE2	3:B:301:GLU:N	2.41	0.54
1:A:106:ASP:OD1	1:A:141:GLN:HG3	2.08	0.53
1:D:10:MET:O	3:D:301:GLU:HB2	2.09	0.53
1:B:179:ALA:HB2	1:B:208:ARG:HD2	1.91	0.53
1:D:20[B]:ARG:NH2	1:D:20[B]:ARG:CG	2.57	0.53
1:D:171:THR:HG22	1:D:174:SER:H	1.70	0.52
1:D:121:ALA:HB1	1:D:185:LEU:HD13	1.91	0.52
1:A:33:LEU:HD12	1:B:167:LEU:HD21	1.90	0.52
1:B:179:ALA:HB2	1:B:208:ARG:CD	2.40	0.52
1:C:90:ALA:O	1:C:94:GLU:HG3	2.09	0.52
1:B:172:GLU:HB3	1:C:207:GLU:HB3	1.91	0.51
1:D:119:ARG:NH2	1:D:188:GLN:O	2.44	0.51
1:C:104:ILE:HD11	1:C:216:THR:HB	1.93	0.51
1:D:171:THR:HG22	1:D:174:SER:CB	2.41	0.50
1:D:164:GLU:O	1:D:169:GLN:HG2	2.12	0.50
1:D:6:LEU:HD23	1:D:80:VAL:HB	1.92	0.50
1:B:66:GLU:OE2	1:B:96:ARG:NH1	2.45	0.50
1:B:183:ALA:HA	1:B:210:VAL:HG11	1.93	0.49
1:C:21:LEU:HD13	1:C:218:ALA:HA	1.93	0.49
1:B:147:LEU:HD12	1:B:190:ALA:HB2	1.94	0.49
1:C:129:MET:O	1:C:135:ARG:HD2	2.11	0.49
1:A:20:ARG:NE	5:A:416:HOH:O	2.45	0.49
1:C:207:GLU:HA	1:C:209:SER:N	2.27	0.49
1:B:107:ALA:CB	5:B:406:HOH:O	2.59	0.49
1:B:197:SER:HG	3:B:301:GLU:N	2.10	0.49
1:B:150:GLU:O	1:B:154:ARG:HG3	2.14	0.48
1:B:69:LEU:HD21	1:B:96:ARG:O	2.13	0.48
1:D:171:THR:HG23	1:D:174:SER:H	1.77	0.48
1:D:102:LEU:HA	2:D:303:GOL:H12	1.96	0.48
1:D:80:VAL:HG13	1:D:220:HIS:CE1	2.48	0.48
1:C:73:ARG:NH2	5:C:403:HOH:O	2.22	0.48
1:A:46:HIS:O	1:A:50:GLU:HG2	2.13	0.47
1:B:119:ARG:HA	1:B:145:ASN:O	2.15	0.46
1:A:20:ARG:CD	5:A:416:HOH:O	2.62	0.46
1:B:182:ILE:HG22	1:B:210:VAL:HG12	1.98	0.46
1:C:210:VAL:O	1:C:210:VAL:HG12	2.15	0.46
1:B:120:VAL:O	1:B:146:CYS:HA	2.16	0.46
1:B:208:ARG:NH1	5:B:409:HOH:O	2.48	0.46
1:A:60:THR:CG2	1:A:86:MET:CE	2.93	0.45
1:D:106:ASP:HB2	2:D:303:GOL:H2	1.98	0.45
1:C:26:ILE:HD13	1:C:225:VAL:HG13	1.97	0.45

Continued on next page...

Continued from previous page...

Atom-1	Atom-2	Interatomic distance (Å)	Clash overlap (Å)
1:D:106:ASP:CB	2:D:303:GOL:H2	2.47	0.45
1:C:206:GLU:HG3	5:C:469:HOH:O	2.16	0.45
1:B:172:GLU:OE2	1:B:175:ARG:HD2	2.17	0.44
1:D:150:GLU:O	1:D:154:ARG:HG3	2.18	0.44
1:A:52:GLN:HA	1:A:52:GLN:OE1	2.18	0.44
1:B:102[A]:LEU:HD12	1:B:102[A]:LEU:N	2.32	0.44
1:B:176:ALA:O	1:B:179:ALA:HB3	2.18	0.44
1:C:29:ARG:NH2	5:C:417:HOH:O	2.51	0.44
1:D:108:THR:HG22	1:D:112:ILE:HD12	2.00	0.44
1:A:20:ARG:HD3	5:A:416:HOH:O	2.17	0.44
1:C:60:THR:HG21	1:C:86:MET:HE3	1.94	0.44
1:B:29:ARG:NE	5:B:414:HOH:O	2.51	0.43
1:C:56:GLU:HG3	5:C:503:HOH:O	2.17	0.43
1:C:104:ILE:HD12	1:C:220:HIS:ND1	2.33	0.43
1:B:156:LYS:N	1:B:156:LYS:HD2	2.32	0.43
1:C:148:ILE:HB	1:C:149:PRO:HD2	2.01	0.43
1:C:120:VAL:HG22	1:C:121:ALA:N	2.34	0.42
1:B:216:THR:O	1:B:220:HIS:HB2	2.19	0.42
1:A:28:GLN:HG3	5:A:458:HOH:O	2.18	0.42
1:A:49:GLU:HG2	1:B:33:LEU:HD12	2.02	0.42
1:C:151:ALA:HA	1:C:154:ARG:NH1	2.34	0.42
1:C:197:SER:HB3	1:C:200:ILE:HG13	2.01	0.42
1:B:208:ARG:HH22	1:C:210:VAL:HG22	1.84	0.42
1:A:219:ILE:O	1:A:222:GLU:HG2	2.20	0.42
1:D:233:HIS:CD2	1:D:234:HIS:CD2	3.08	0.42
1:C:210:VAL:CG1	1:C:210:VAL:O	2.68	0.42
1:B:184:ARG:O	1:B:188:GLN:HG2	2.20	0.41
1:C:207:GLU:CA	1:C:209:SER:H	2.33	0.41
1:C:216:THR:O	1:C:220:HIS:HB2	2.20	0.41
1:C:10:MET:O	3:C:301:GLU:HB2	2.20	0.41
1:C:28:GLN:NE2	5:C:419:HOH:O	2.52	0.41
1:D:171:THR:C	1:D:172[B]:GLU:OE2	2.49	0.41
1:B:26:ILE:HD13	1:B:225:VAL:HG13	2.03	0.41
1:C:207:GLU:HA	1:C:209:SER:H	1.86	0.41
1:C:41:HIS:CE1	5:C:460:HOH:O	2.73	0.40
1:C:186:ALA:HB2	1:C:211:LEU:HD21	2.03	0.40
1:D:194:ILE:HG21	1:D:194:ILE:HD13	1.92	0.40
1:A:169:GLN:O	5:A:404:HOH:O	2.22	0.40
1:B:185:LEU:HA	1:B:188:GLN:HG2	2.04	0.40

All (3) symmetry-related close contacts are listed below. The label for Atom-2 includes the symmetry operator and encoded unit-cell translations to be applied.

Atom-1	Atom-2	Interatomic distance (Å)	Clash overlap (Å)
5:B:471:HOH:O	5:C:475:HOH:O[2_555]	1.89	0.31
5:B:411:HOH:O	5:D:430:HOH:O[1_556]	1.92	0.28
5:B:523:HOH:O	5:D:543:HOH:O[1_556]	1.97	0.23

5.3 Torsion angles [i](#)

5.3.1 Protein backbone [i](#)

In the following table, the Percentiles column shows the percent Ramachandran outliers of the chain as a percentile score with respect to all X-ray entries followed by that with respect to entries of similar resolution.

The Analysed column shows the number of residues for which the backbone conformation was analysed, and the total number of residues.

Mol	Chain	Analysed	Favoured	Allowed	Outliers	Percentiles	
1	A	233/238 (98%)	225 (97%)	8 (3%)	0	100	100
1	B	235/238 (99%)	228 (97%)	6 (3%)	1 (0%)	34	30
1	C	234/238 (98%)	223 (95%)	9 (4%)	2 (1%)	17	11
1	D	238/238 (100%)	232 (98%)	6 (2%)	0	100	100
All	All	940/952 (99%)	908 (97%)	29 (3%)	3 (0%)	41	37

All (3) Ramachandran outliers are listed below:

Mol	Chain	Res	Type
1	B	206	GLU
1	C	232	GLU
1	C	207	GLU

5.3.2 Protein sidechains [i](#)

In the following table, the Percentiles column shows the percent sidechain outliers of the chain as a percentile score with respect to all X-ray entries followed by that with respect to entries of similar resolution.

The Analysed column shows the number of residues for which the sidechain conformation was analysed, and the total number of residues.

Mol	Chain	Analysed	Rotameric	Outliers	Percentiles	
1	A	188/191 (98%)	187 (100%)	1 (0%)	88	92

Continued on next page...

Continued from previous page...

Mol	Chain	Analysed	Rotameric	Outliers	Percentiles	
1	B	189/191 (99%)	186 (98%)	3 (2%)	62	67
1	C	189/191 (99%)	180 (95%)	9 (5%)	25	22
1	D	191/191 (100%)	186 (97%)	5 (3%)	46	48
All	All	757/764 (99%)	739 (98%)	18 (2%)	47	51

All (18) residues with a non-rotameric sidechain are listed below:

Mol	Chain	Res	Type
1	A	83	THR
1	B	83	THR
1	B	132	ASP
1	B	156	LYS
1	C	59	LYS
1	C	83	THR
1	C	91	ASP
1	C	130	GLU
1	C	143	SER
1	C	152	ASP
1	C	153	GLU
1	C	180	GLN
1	C	184	ARG
1	D	53	ARG
1	D	83	THR
1	D	135	ARG
1	D	169	GLN
1	D	171	THR

Some sidechains can be flipped to improve hydrogen bonding and reduce clashes. All (2) such sidechains are listed below:

Mol	Chain	Res	Type
1	B	169	GLN
1	B	180	GLN

5.3.3 RNA ⓘ

There are no RNA molecules in this entry.

5.4 Non-standard residues in protein, DNA, RNA chains ⓘ

There are no non-standard protein/DNA/RNA residues in this entry.

5.5 Carbohydrates ⓘ

There are no monosaccharides in this entry.

5.6 Ligand geometry ⓘ

6 ligands are modelled in this entry.

In the following table, the Counts columns list the number of bonds (or angles) for which Mogul statistics could be retrieved, the number of bonds (or angles) that are observed in the model and the number of bonds (or angles) that are defined in the Chemical Component Dictionary. The Link column lists molecule types, if any, to which the group is linked. The Z score for a bond length (or angle) is the number of standard deviations the observed value is removed from the expected value. A bond length (or angle) with $|Z| > 2$ is considered an outlier worth inspection. RMSZ is the root-mean-square of all Z scores of the bond lengths (or angles).

Mol	Type	Chain	Res	Link	Bond lengths			Bond angles		
					Counts	RMSZ	$\# Z > 2$	Counts	RMSZ	$\# Z > 2$
3	GLU	C	301	-	2,9,9	0.62	0	2,11,11	0.14	0
2	GOL	A	301	-	5,5,5	0.29	0	5,5,5	0.28	0
3	GLU	D	301	-	2,9,9	0.60	0	2,11,11	1.46	0
3	GLU	B	301	-	2,9,9	0.47	0	2,11,11	0.02	0
4	NO3	D	302	-	1,3,3	0.33	0	0,3,3	0.00	-
2	GOL	D	303	-	5,5,5	0.82	0	5,5,5	0.89	0

In the following table, the Chirals column lists the number of chiral outliers, the number of chiral centers analysed, the number of these observed in the model and the number defined in the Chemical Component Dictionary. Similar counts are reported in the Torsion and Rings columns. '-' means no outliers of that kind were identified.

Mol	Type	Chain	Res	Link	Chirals	Torsions	Rings
3	GLU	D	301	-	-	1/3/9/9	-
3	GLU	B	301	-	-	2/3/9/9	-
2	GOL	A	301	-	-	0/4/4/4	-
2	GOL	D	303	-	-	3/4/4/4	-
3	GLU	C	301	-	-	1/3/9/9	-

There are no bond length outliers.

There are no bond angle outliers.

There are no chirality outliers.

All (7) torsion outliers are listed below:

Mol	Chain	Res	Type	Atoms
3	C	301	GLU	CA-CB-CG-CD
3	B	301	GLU	C-CA-CB-CG
2	D	303	GOL	C1-C2-C3-O3
2	D	303	GOL	O2-C2-C3-O3
2	D	303	GOL	O1-C1-C2-C3
3	D	301	GLU	N-CA-CB-CG
3	B	301	GLU	N-CA-CB-CG

There are no ring outliers.

4 monomers are involved in 14 short contacts:

Mol	Chain	Res	Type	Clashes	Symm-Clashes
3	C	301	GLU	4	0
3	D	301	GLU	4	0
3	B	301	GLU	3	0
2	D	303	GOL	3	0

5.7 Other polymers [i](#)

There are no such residues in this entry.

5.8 Polymer linkage issues [i](#)

There are no chain breaks in this entry.

6 Fit of model and data ⓘ

6.1 Protein, DNA and RNA chains ⓘ

In the following table, the column labelled ‘#RSRZ> 2’ contains the number (and percentage) of RSRZ outliers, followed by percent RSRZ outliers for the chain as percentile scores relative to all X-ray entries and entries of similar resolution. The OWAB column contains the minimum, median, 95th percentile and maximum values of the occupancy-weighted average B-factor per residue. The column labelled ‘Q< 0.9’ lists the number of (and percentage) of residues with an average occupancy less than 0.9.

Mol	Chain	Analysed	<RSRZ>	#RSRZ>2	OWAB(Å ²)	Q<0.9
1	A	235/238 (98%)	-0.20	2 (0%) 84 83	7, 17, 31, 47	0
1	B	235/238 (98%)	0.18	12 (5%) 28 27	6, 23, 47, 67	0
1	C	235/238 (98%)	0.33	23 (9%) 7 7	6, 23, 54, 62	0
1	D	235/238 (98%)	-0.33	1 (0%) 92 92	5, 13, 26, 42	0
All	All	940/952 (98%)	-0.01	38 (4%) 38 37	5, 17, 47, 67	0

All (38) RSRZ outliers are listed below:

Mol	Chain	Res	Type	RSRZ
1	C	173	ALA	7.0
1	A	167	LEU	5.4
1	C	170	PHE	4.9
1	B	168	GLY	4.8
1	B	167	LEU	4.3
1	B	170	PHE	4.0
1	C	160	ILE	3.6
1	C	156	LYS	3.5
1	B	210	VAL	3.4
1	C	187	GLU	3.4
1	C	161	ILE	3.3
1	C	152	ASP	3.0
1	B	204	VAL	3.0
1	B	207	GLU	3.0
1	C	180	GLN	2.9
1	C	174	SER	2.9
1	C	186	ALA	2.8
1	C	163	GLU	2.8
1	B	198	THR	2.6
1	C	164	GLU	2.6
1	C	205	PRO	2.6

Continued on next page...

Continued from previous page...

Mol	Chain	Res	Type	RSRZ
1	C	181	VAL	2.6
1	C	184	ARG	2.6
1	C	208	ARG	2.5
1	C	144	ILE	2.5
1	B	182	ILE	2.5
1	B	235	HIS	2.4
1	C	207	GLU	2.4
1	D	140	GLU	2.2
1	C	177	TYR	2.2
1	C	162	PHE	2.2
1	B	169	GLN	2.2
1	C	143	SER	2.1
1	B	140	GLU	2.1
1	C	178	TYR	2.1
1	B	209	SER	2.1
1	C	172	GLU	2.0
1	A	168	GLY	2.0

6.2 Non-standard residues in protein, DNA, RNA chains ⓘ

There are no non-standard protein/DNA/RNA residues in this entry.

6.3 Carbohydrates ⓘ

There are no monosaccharides in this entry.

6.4 Ligands ⓘ

In the following table, the Atoms column lists the number of modelled atoms in the group and the number defined in the chemical component dictionary. The B-factors column lists the minimum, median, 95th percentile and maximum values of B factors of atoms in the group. The column labelled 'Q< 0.9' lists the number of atoms with occupancy less than 0.9.

Mol	Type	Chain	Res	Atoms	RSCC	RSR	B-factors(Å ²)	Q<0.9
3	GLU	C	301	10/10	0.79	0.23	28,39,48,52	0
2	GOL	A	301	6/6	0.83	0.14	34,35,36,36	0
3	GLU	B	301	10/10	0.86	0.23	26,35,40,40	0
2	GOL	D	303	6/6	0.86	0.15	28,31,32,36	0
3	GLU	D	301	10/10	0.92	0.18	18,31,41,50	0
4	NO3	D	302	4/4	0.93	0.12	28,29,30,31	0

6.5 Other polymers [i](#)

There are no such residues in this entry.