



Full wwPDB X-ray Structure Validation Report ⓘ

Mar 28, 2022 – 06:13 PM JST

PDB ID : 7EM7
Title : Crystal structure of the PI5P4Kbeta N203D-XTP complex
Authors : Senda, M.; Senda, T.
Deposited on : 2021-04-13
Resolution : 3.45 Å(reported)

This is a Full wwPDB X-ray Structure Validation Report for a publicly released PDB entry.

We welcome your comments at validation@mail.wwpdb.org

A user guide is available at

<https://www.wwpdb.org/validation/2017/XrayValidationReportHelp>

with specific help available everywhere you see the ⓘ symbol.

The following versions of software and data (see [references ⓘ](#)) were used in the production of this report:

MolProbity : 4.02b-467
Mogul : 1.8.5 (274361), CSD as541be (2020)
Xtriage (Phenix) : 1.13
EDS : 2.27
buster-report : 1.1.7 (2018)
Percentile statistics : 20191225.v01 (using entries in the PDB archive December 25th 2019)
Refmac : 5.8.0158
CCP4 : 7.0.044 (Gargrove)
Ideal geometry (proteins) : Engh & Huber (2001)
Ideal geometry (DNA, RNA) : Parkinson et al. (1996)
Validation Pipeline (wwPDB-VP) : 2.27

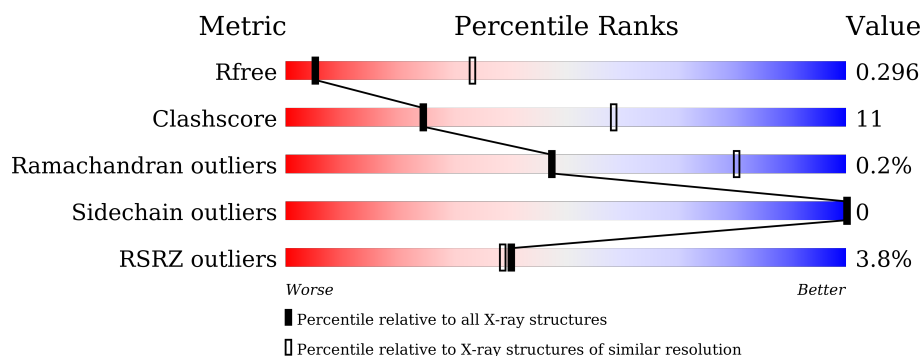
1 Overall quality at a glance

The following experimental techniques were used to determine the structure:

X-RAY DIFFRACTION

The reported resolution of this entry is 3.45 Å.

Percentile scores (ranging between 0-100) for global validation metrics of the entry are shown in the following graphic. The table shows the number of entries on which the scores are based.



Metric	Whole archive (#Entries)	Similar resolution (#Entries, resolution range(Å))
R_{free}	130704	1291 (3.52-3.40)
Clashscore	141614	1372 (3.52-3.40)
Ramachandran outliers	138981	1337 (3.52-3.40)
Sidechain outliers	138945	1338 (3.52-3.40)
RSRZ outliers	127900	1205 (3.52-3.40)

The table below summarises the geometric issues observed across the polymeric chains and their fit to the electron density. The red, orange, yellow and green segments of the lower bar indicate the fraction of residues that contain outliers for ≥ 3 , 2, 1 and 0 types of geometric quality criteria respectively. A grey segment represents the fraction of residues that are not modelled. The numeric value for each fraction is indicated below the corresponding segment, with a dot representing fractions $\leq 5\%$. The upper red bar (where present) indicates the fraction of residues that have poor fit to the electron density. The numeric value is given above the bar.

Mol	Chain	Length	Quality of chain
1	A	393	<div> <div>2%</div> <div> <div></div> <div>61%</div> <div>19%</div> <div>21%</div> </div> </div>
1	B	393	<div> <div>4%</div> <div> <div></div> <div>61%</div> <div>16%</div> <div>23%</div> </div> </div>

2 Entry composition

There are 3 unique types of molecules in this entry. The entry contains 4564 atoms, of which 0 are hydrogens and 0 are deuteriums.

In the tables below, the ZeroOcc column contains the number of atoms modelled with zero occupancy, the AltConf column contains the number of residues with at least one atom in alternate conformation and the Trace column contains the number of residues modelled with at most 2 atoms.

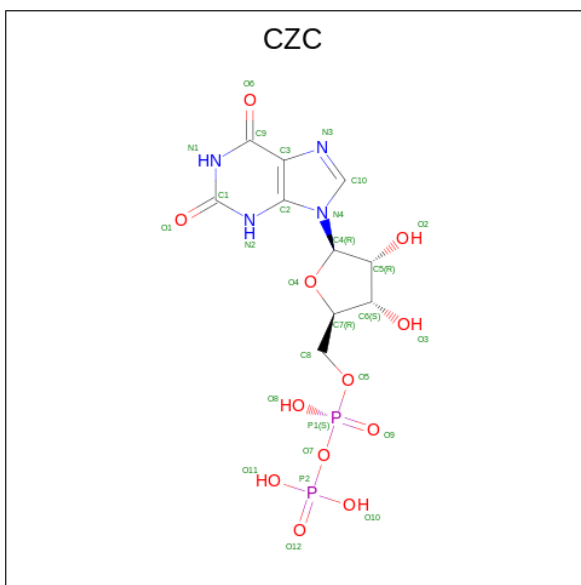
- Molecule 1 is a protein called Phosphatidylinositol 5-phosphate 4-kinase type-2 beta.

Mol	Chain	Residues	Atoms					ZeroOcc	AltConf	Trace
1	A	312	Total	C	N	O	S	0	0	0
			2346	1499	385	450	12			
1	B	301	Total	C	N	O	S	0	0	0
			2130	1362	353	404	11			

There are 16 discrepancies between the modelled and reference sequences:

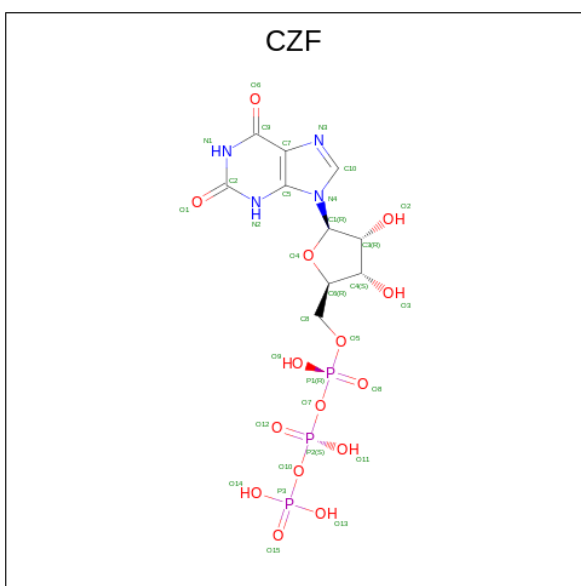
Chain	Residue	Modelled	Actual	Comment	Reference
A	24	GLY	-	expression tag	UNP P78356
A	25	PRO	-	expression tag	UNP P78356
A	26	ASN	-	expression tag	UNP P78356
A	27	CYS	-	expression tag	UNP P78356
A	28	ALA	-	expression tag	UNP P78356
A	29	PRO	-	expression tag	UNP P78356
A	30	GLY	-	expression tag	UNP P78356
A	203	ASP	ASN	engineered mutation	UNP P78356
B	24	GLY	-	expression tag	UNP P78356
B	25	PRO	-	expression tag	UNP P78356
B	26	ASN	-	expression tag	UNP P78356
B	27	CYS	-	expression tag	UNP P78356
B	28	ALA	-	expression tag	UNP P78356
B	29	PRO	-	expression tag	UNP P78356
B	30	GLY	-	expression tag	UNP P78356
B	203	ASP	ASN	engineered mutation	UNP P78356

- Molecule 2 is [(2 {R},3 {S},4 {R},5 {R})-5-[2,6-bis(oxidanylidene)-3 {H}-purin-9-yl]-3,4-bis(oxidanyl)oxolan-2-yl]methyl phosphono hydrogen phosphate (three-letter code: CZC) (formula: C₁₀H₁₄N₄O₁₂P₂) (labeled as "Ligand of Interest" by depositor).



Mol	Chain	Residues	Atoms				ZeroOcc	AltConf	
2	A	1	Total 56	C 20	N 8	O 24	P 4	0	1

- Molecule 3 is [[(2 {R},3 {S},4 {R},5 {R})-5-[2,6-bis(oxidanylidene)-3 {H}-purin-9-yl]-3, 4-bis(oxidanyl)oxolan-2-yl]methoxy-oxidanyl-phosphoryl] phosphono hydrogen phosphate (three-letter code: CZF) (formula: C₁₀H₁₅N₄O₁₅P₃).



Mol	Chain	Residues	Atoms				ZeroOcc	AltConf	
3	A	1	Total 32	C 10	N 4	O 15	P 3	0	0

- Molecule 1: Phosphatidylinositol 5-phosphate 4-kinase type-2 beta



4 Data and refinement statistics

Property	Value	Source
Space group	C 2 2 21	Depositor
Cell constants a, b, c, α , β , γ	109.21Å 185.86Å 106.96Å 90.00° 90.00° 90.00°	Depositor
Resolution (Å)	48.64 – 3.45 48.64 – 3.45	Depositor EDS
% Data completeness (in resolution range)	99.7 (48.64-3.45) 99.8 (48.64-3.45)	Depositor EDS
R_{merge}	0.09	Depositor
R_{sym}	(Not available)	Depositor
$\langle I/\sigma(I) \rangle$ ¹	2.10 (at 3.48Å)	Xtriage
Refinement program	PHENIX 1.18.2_3874	Depositor
R, R_{free}	0.239 , 0.296 0.239 , 0.296	Depositor DCC
R_{free} test set	733 reflections (5.00%)	wwPDB-VP
Wilson B-factor (Å ²)	118.6	Xtriage
Anisotropy	0.252	Xtriage
Bulk solvent k_{sol} (e/Å ³), B_{sol} (Å ²)	0.28 , 96.8	EDS
L-test for twinning ²	$\langle L \rangle = 0.50$, $\langle L^2 \rangle = 0.33$	Xtriage
Estimated twinning fraction	0.000 for 1/2*h-1/2*k,-3/2*h-1/2*k,-l 0.005 for 1/2*h+1/2*k,3/2*h-1/2*k,-l	Xtriage
F_o, F_c correlation	0.92	EDS
Total number of atoms	4564	wwPDB-VP
Average B, all atoms (Å ²)	121.0	wwPDB-VP

Xtriage's analysis on translational NCS is as follows: *The largest off-origin peak in the Patterson function is 4.41% of the height of the origin peak. No significant pseudotranslation is detected.*

¹Intensities estimated from amplitudes.

²Theoretical values of $\langle |L| \rangle$, $\langle L^2 \rangle$ for acentric reflections are 0.5, 0.333 respectively for untwinned datasets, and 0.375, 0.2 for perfectly twinned datasets.

5 Model quality [i](#)

5.1 Standard geometry [i](#)

Bond lengths and bond angles in the following residue types are not validated in this section: CZC, CZF

The Z score for a bond length (or angle) is the number of standard deviations the observed value is removed from the expected value. A bond length (or angle) with $|Z| > 5$ is considered an outlier worth inspection. RMSZ is the root-mean-square of all Z scores of the bond lengths (or angles).

Mol	Chain	Bond lengths		Bond angles	
		RMSZ	$\# Z > 5$	RMSZ	$\# Z > 5$
1	A	0.57	0/2397	0.75	2/3268 (0.1%)
1	B	0.46	0/2177	0.63	0/2983
All	All	0.52	0/4574	0.70	2/6251 (0.0%)

There are no bond length outliers.

All (2) bond angle outliers are listed below:

Mol	Chain	Res	Type	Atoms	Z	Observed(°)	Ideal(°)
1	A	114	ASP	CB-CG-OD1	6.17	123.85	118.30
1	A	114	ASP	CB-CG-OD2	-5.64	113.22	118.30

There are no chirality outliers.

There are no planarity outliers.

5.2 Too-close contacts [i](#)

In the following table, the Non-H and H(model) columns list the number of non-hydrogen atoms and hydrogen atoms in the chain respectively. The H(added) column lists the number of hydrogen atoms added and optimized by MolProbity. The Clashes column lists the number of clashes within the asymmetric unit, whereas Symm-Clashes lists symmetry-related clashes.

Mol	Chain	Non-H	H(model)	H(added)	Clashes	Symm-Clashes
1	A	2346	0	2067	53	0
1	B	2130	0	1778	45	0
2	A	56	0	0	1	0
3	A	32	0	0	0	0
All	All	4564	0	3845	92	0

The all-atom clashscore is defined as the number of clashes found per 1000 atoms (including

hydrogen atoms). The all-atom clashscore for this structure is 11.

All (92) close contacts within the same asymmetric unit are listed below, sorted by their clash magnitude.

Atom-1	Atom-2	Interatomic distance (Å)	Clash overlap (Å)
1:A:209:LEU:HD11	1:A:342:PHE:HB3	1.66	0.78
1:A:204:VAL:HG11	1:A:282:LEU:HD23	1.71	0.72
1:B:107:ARG:NH1	1:B:184:LEU:O	2.27	0.69
1:A:283:VAL:HG22	1:A:365:MET:HG2	1.78	0.65
1:B:191:VAL:O	1:B:194:VAL:HG12	1.97	0.63
1:A:204:VAL:HG12	2:A:501[B]:CZC:O6	2.03	0.59
1:B:81:ASN:O	1:B:91:SER:HB3	2.03	0.58
1:A:33:VAL:HG13	1:B:59:ASN:HA	1.86	0.56
1:A:204:VAL:HG23	1:A:349:TYR:CD2	2.41	0.56
1:B:272:ALA:HB2	1:B:404:SER:CB	2.36	0.56
1:A:51:ASN:HB2	1:A:122:THR:HG21	1.89	0.55
1:A:83:LEU:HD13	1:B:69:ASP:HB3	1.90	0.54
1:B:206:SER:OG	1:B:209:LEU:N	2.41	0.54
1:B:400:PRO:HB2	1:B:402:GLN:HB2	1.90	0.53
1:A:94:LYS:HB2	1:A:190:THR:HB	1.90	0.53
1:A:188:ARG:NH1	1:A:195:GLU:OE1	2.42	0.53
1:A:49:GLY:O	1:A:53:THR:HG23	2.08	0.53
1:B:38:ALA:HA	1:B:125:ALA:HB2	1.91	0.53
1:B:157:VAL:HG21	1:B:197:TYR:CD2	2.45	0.52
1:A:62:VAL:HA	1:A:104:ARG:NH2	2.25	0.52
1:A:97:GLU:CD	1:A:100:PRO:HB3	2.30	0.52
1:B:167:TYR:CZ	1:B:183:PHE:HD1	2.27	0.52
1:A:97:GLU:OE1	1:A:100:PRO:HB3	2.09	0.52
1:B:281:LEU:HG	1:B:366:ALA:O	2.10	0.52
1:A:204:VAL:CG1	1:A:282:LEU:HD23	2.40	0.52
1:B:226:ALA:HB2	1:B:238:PHE:HA	1.92	0.51
1:A:102:VAL:HG11	1:A:164:LEU:HD21	1.92	0.51
1:A:181:PRO:HG3	1:A:368:ILE:HA	1.93	0.51
1:B:189:LEU:O	1:B:195:GLU:HA	2.10	0.51
1:B:212:HIS:N	1:B:285:ILE:O	2.37	0.51
1:A:252:VAL:HB	1:A:256:SER:HB2	1.94	0.48
1:B:211:VAL:HG22	1:B:364:PHE:HE1	1.78	0.48
1:B:181:PRO:HD2	1:B:370:ILE:HD13	1.95	0.48
1:A:61:PRO:O	1:A:104:ARG:NH2	2.44	0.48
1:A:271:LEU:HD13	1:A:279:TYR:CD2	2.49	0.48
1:A:75:SER:HA	1:B:81:ASN:HB3	1.96	0.48
1:A:182:GLN:O	1:A:201:THR:HA	2.15	0.47
1:B:280:SER:HB2	1:B:368:ILE:HG12	1.98	0.46

Continued on next page...

Continued from previous page...

Atom-1	Atom-2	Interatomic distance (Å)	Clash overlap (Å)
1:A:217:LEU:HA	1:A:240:ASP:OD1	2.16	0.45
1:B:211:VAL:HG22	1:B:364:PHE:CE1	2.51	0.45
1:A:77:ILE:HG22	1:B:79:VAL:HG22	1.98	0.45
1:B:96:LYS:HB3	1:B:188:ARG:HB3	1.98	0.45
1:B:227:SER:HB3	1:B:230:GLU:H	1.80	0.45
1:B:79:VAL:O	1:B:92:ARG:HA	2.16	0.45
1:B:182:GLN:O	1:B:201:THR:HA	2.17	0.45
1:A:241:ASN:HA	1:A:244:LEU:HD12	1.99	0.44
1:A:75:SER:O	1:A:96:LYS:HA	2.17	0.44
1:B:38:ALA:HB1	1:B:43:LEU:HB2	1.98	0.44
1:A:151:THR:HA	1:A:197:TYR:O	2.17	0.44
1:A:47:MET:SD	1:A:125:ALA:HA	2.58	0.44
1:A:48:TRP:CZ3	1:A:77:ILE:HD11	2.53	0.44
1:A:42:ILE:HD11	1:A:196:THR:HG21	2.00	0.43
1:B:51:ASN:HB2	1:B:122:THR:HG21	2.00	0.43
1:B:37:ARG:O	1:B:125:ALA:HB2	2.17	0.43
1:B:106:LEU:HD23	1:B:106:LEU:HA	1.74	0.43
1:A:157:VAL:HG21	1:A:197:TYR:CD1	2.53	0.43
1:A:265:LYS:O	1:A:269:GLU:HG3	2.19	0.43
1:A:281:LEU:HD12	1:A:366:ALA:O	2.19	0.43
1:A:350:ALA:HA	1:A:363:TYR:O	2.18	0.43
1:A:106:LEU:HD23	1:A:106:LEU:HA	1.86	0.43
1:B:38:ALA:HA	1:B:125:ALA:CB	2.49	0.42
1:B:66:LEU:HD12	1:B:168:HIS:CE1	2.54	0.42
1:A:107:ARG:NH1	1:A:114:ASP:CG	2.72	0.42
1:B:216:ASP:OD1	1:B:368:ILE:HD11	2.20	0.42
1:B:343:ASP:OD1	1:B:345:SER:OG	2.28	0.42
1:B:46:LEU:HD21	1:B:149:ILE:HD13	2.02	0.42
1:B:140:LEU:HB2	1:B:149:ILE:HB	2.02	0.42
1:A:215:TYR:O	1:A:282:LEU:HD12	2.20	0.42
1:B:286:HIS:O	1:B:361:GLU:HA	2.20	0.42
1:A:84:PHE:CE1	1:B:100:PRO:HG2	2.54	0.41
1:A:271:LEU:HD13	1:A:279:TYR:CE2	2.54	0.41
1:A:272:ALA:HB2	1:A:404:SER:HB2	2.02	0.41
1:A:107:ARG:NH1	1:A:114:ASP:OD2	2.53	0.41
1:A:210:THR:O	1:A:286:HIS:ND1	2.38	0.41
1:B:280:SER:HB2	1:B:368:ILE:CG1	2.50	0.41
1:A:228:ASP:OD1	1:A:228:ASP:N	2.53	0.41
1:A:261:LEU:HD23	1:A:261:LEU:HA	1.85	0.41
1:B:75:SER:O	1:B:96:LYS:HA	2.21	0.41
1:B:106:LEU:HD21	1:B:168:HIS:HD2	1.86	0.41

Continued on next page...

Continued from previous page...

Atom-1	Atom-2	Interatomic distance (Å)	Clash overlap (Å)
1:B:368:ILE:HD13	1:B:368:ILE:HG21	1.90	0.41
1:A:42:ILE:HG13	1:A:189:LEU:HD22	2.02	0.41
1:A:152:VAL:O	1:A:197:TYR:HB2	2.21	0.41
1:B:36:PHE:CE1	1:B:48:TRP:HA	2.56	0.41
1:B:167:TYR:CZ	1:B:183:PHE:CD1	3.09	0.41
1:A:399:ASN:HB3	1:A:402:GLN:CB	2.51	0.41
1:A:48:TRP:HB2	1:A:89:LEU:HD21	2.03	0.40
1:A:73:ALA:HB2	1:B:83:LEU:HB2	2.02	0.40
1:A:228:ASP:HA	1:A:231:LYS:CE	2.51	0.40
1:B:157:VAL:HG21	1:B:197:TYR:HD2	1.84	0.40
1:A:354:HIS:ND1	1:A:356:SER:HB2	2.36	0.40
1:A:48:TRP:CH2	1:A:77:ILE:HD11	2.56	0.40
1:A:349:TYR:CD1	1:A:366:ALA:HB2	2.56	0.40

There are no symmetry-related clashes.

5.3 Torsion angles [i](#)

5.3.1 Protein backbone [i](#)

In the following table, the Percentiles column shows the percent Ramachandran outliers of the chain as a percentile score with respect to all X-ray entries followed by that with respect to entries of similar resolution.

The Analysed column shows the number of residues for which the backbone conformation was analysed, and the total number of residues.

Mol	Chain	Analysed	Favoured	Allowed	Outliers	Percentiles	
1	A	302/393 (77%)	288 (95%)	13 (4%)	1 (0%)	41	75
1	B	291/393 (74%)	275 (94%)	16 (6%)	0	100	100
All	All	593/786 (75%)	563 (95%)	29 (5%)	1 (0%)	47	80

All (1) Ramachandran outliers are listed below:

Mol	Chain	Res	Type
1	A	358	PRO

5.3.2 Protein sidechains [i](#)

In the following table, the Percentiles column shows the percent sidechain outliers of the chain as a percentile score with respect to all X-ray entries followed by that with respect to entries of similar resolution.

The Analysed column shows the number of residues for which the sidechain conformation was analysed, and the total number of residues.

Mol	Chain	Analysed	Rotameric	Outliers	Percentiles	
1	A	231/352 (66%)	231 (100%)	0	100	100
1	B	189/352 (54%)	189 (100%)	0	100	100
All	All	420/704 (60%)	420 (100%)	0	100	100

There are no protein residues with a non-rotameric sidechain to report.

Sometimes sidechains can be flipped to improve hydrogen bonding and reduce clashes. There are no such sidechains identified.

5.3.3 RNA [i](#)

There are no RNA molecules in this entry.

5.4 Non-standard residues in protein, DNA, RNA chains [i](#)

There are no non-standard protein/DNA/RNA residues in this entry.

5.5 Carbohydrates [i](#)

There are no monosaccharides in this entry.

5.6 Ligand geometry [i](#)

3 ligands are modelled in this entry.

In the following table, the Counts columns list the number of bonds (or angles) for which Mogul statistics could be retrieved, the number of bonds (or angles) that are observed in the model and the number of bonds (or angles) that are defined in the Chemical Component Dictionary. The Link column lists molecule types, if any, to which the group is linked. The Z score for a bond length (or angle) is the number of standard deviations the observed value is removed from the expected value. A bond length (or angle) with $|Z| > 2$ is considered an outlier worth inspection. RMSZ is the root-mean-square of all Z scores of the bond lengths (or angles).

Mol	Type	Chain	Res	Link	Bond lengths			Bond angles		
					Counts	RMSZ	# Z > 2	Counts	RMSZ	# Z > 2
3	CZF	A	502	-	25,34,34	2.40	8 (32%)	29,54,54	2.42	8 (27%)
2	CZC	A	501[A]	-	23,30,30	2.40	6 (26%)	27,47,47	1.80	5 (18%)
2	CZC	A	501[B]	-	23,30,30	2.31	6 (26%)	27,47,47	1.67	6 (22%)

In the following table, the Chirals column lists the number of chiral outliers, the number of chiral centers analysed, the number of these observed in the model and the number defined in the Chemical Component Dictionary. Similar counts are reported in the Torsion and Rings columns. '-' means no outliers of that kind were identified.

Mol	Type	Chain	Res	Link	Chirals	Torsions	Rings
3	CZF	A	502	-	-	5/18/38/38	0/3/3/3
2	CZC	A	501[A]	-	-	5/12/32/32	0/3/3/3
2	CZC	A	501[B]	-	-	1/12/32/32	0/3/3/3

All (20) bond length outliers are listed below:

Mol	Chain	Res	Type	Atoms	Z	Observed(Å)	Ideal(Å)
2	A	501[A]	CZC	C2-N2	6.66	1.41	1.33
2	A	501[B]	CZC	C2-N2	5.75	1.40	1.33
3	A	502	CZF	O4-C1	5.71	1.49	1.41
3	A	502	CZF	C5-N2	5.65	1.40	1.33
2	A	501[B]	CZC	O4-C4	5.35	1.48	1.41
2	A	501[A]	CZC	O4-C4	4.96	1.48	1.41
2	A	501[B]	CZC	C3-C9	-4.36	1.33	1.41
2	A	501[A]	CZC	C3-C9	-4.31	1.33	1.41
3	A	502	CZF	P1-O8	4.24	1.65	1.50
2	A	501[A]	CZC	C9-N1	4.11	1.40	1.33
3	A	502	CZF	C9-N1	4.10	1.40	1.33
2	A	501[B]	CZC	C9-N1	3.69	1.39	1.33
3	A	502	CZF	C7-C9	-3.37	1.35	1.41
2	A	501[B]	CZC	C3-C2	-2.65	1.33	1.40
2	A	501[A]	CZC	C3-C2	-2.52	1.34	1.40
3	A	502	CZF	P3-O14	2.49	1.64	1.54
3	A	502	CZF	P3-O13	2.29	1.63	1.54
2	A	501[A]	CZC	P2-O11	2.13	1.63	1.54
2	A	501[B]	CZC	P2-O10	2.05	1.62	1.54
3	A	502	CZF	C2-N2	2.01	1.42	1.38

All (19) bond angle outliers are listed below:

Mol	Chain	Res	Type	Atoms	Z	Observed(°)	Ideal(°)
3	A	502	CZF	O4-C1-C3	-8.67	94.26	106.93
2	A	501[A]	CZC	C1-N1-C9	5.00	119.36	115.14
2	A	501[A]	CZC	C4-N4-C2	4.54	134.61	126.64
3	A	502	CZF	C1-N4-C5	4.44	134.44	126.64
3	A	502	CZF	C4-C3-C1	-4.29	94.52	100.98
2	A	501[B]	CZC	C4-N4-C2	4.14	133.91	126.64
2	A	501[B]	CZC	C1-N1-C9	4.12	118.62	115.14
3	A	502	CZF	C2-N1-C9	3.93	118.46	115.14
2	A	501[A]	CZC	P1-O7-P2	-3.89	119.48	132.83
3	A	502	CZF	P2-O7-P1	-3.21	121.81	132.83
2	A	501[B]	CZC	C5-C6-C7	-2.88	97.05	102.64
2	A	501[B]	CZC	O4-C4-C5	-2.42	103.38	106.93
3	A	502	CZF	C7-C9-N1	-2.31	120.27	123.43
2	A	501[A]	CZC	O4-C4-C5	-2.22	103.68	106.93
2	A	501[B]	CZC	C6-C5-C4	-2.13	97.76	100.98
3	A	502	CZF	C5-C7-C9	2.09	122.79	120.80
3	A	502	CZF	C5-C7-N3	-2.06	107.25	109.40
2	A	501[B]	CZC	P1-O7-P2	-2.05	125.78	132.83
2	A	501[A]	CZC	C5-C6-C7	-2.04	98.68	102.64

There are no chirality outliers.

All (11) torsion outliers are listed below:

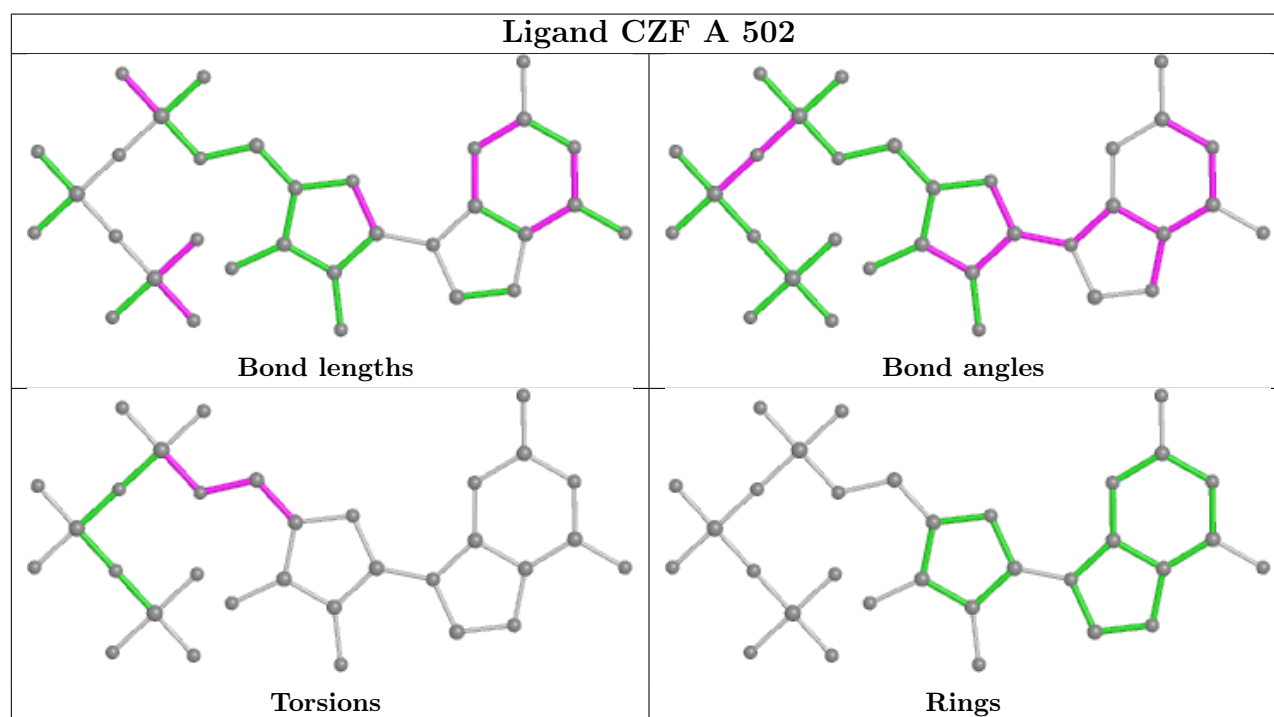
Mol	Chain	Res	Type	Atoms
2	A	501[A]	CZC	C8-O5-P1-O7
2	A	501[B]	CZC	P1-O7-P2-O10
3	A	502	CZF	C4-C6-C8-O5
3	A	502	CZF	O4-C6-C8-O5
3	A	502	CZF	C8-O5-P1-O7
3	A	502	CZF	C8-O5-P1-O9
3	A	502	CZF	C6-C8-O5-P1
2	A	501[A]	CZC	C8-O5-P1-O8
2	A	501[A]	CZC	C6-C7-C8-O5
2	A	501[A]	CZC	O4-C7-C8-O5
2	A	501[A]	CZC	C8-O5-P1-O9

There are no ring outliers.

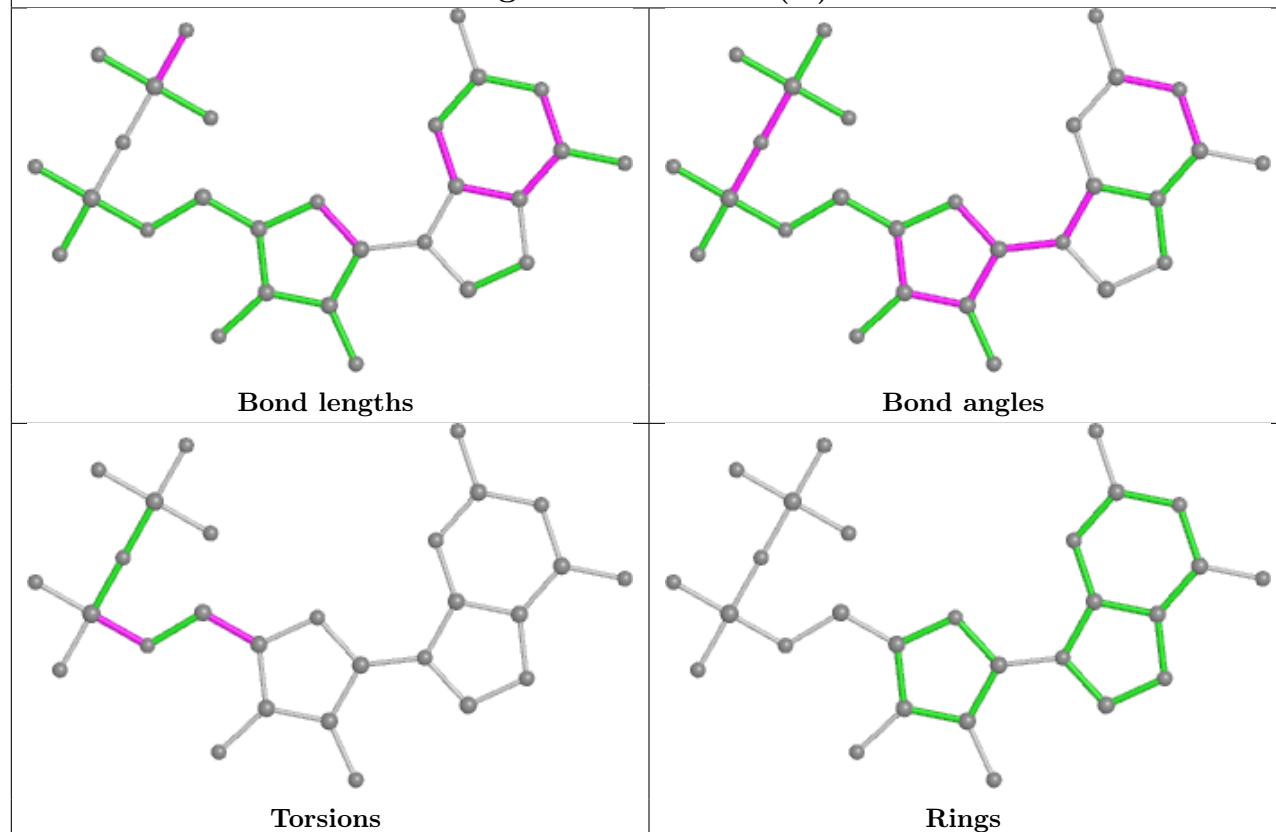
1 monomer is involved in 1 short contact:

Mol	Chain	Res	Type	Clashes	Symm-Clashes
2	A	501[B]	CZC	1	0

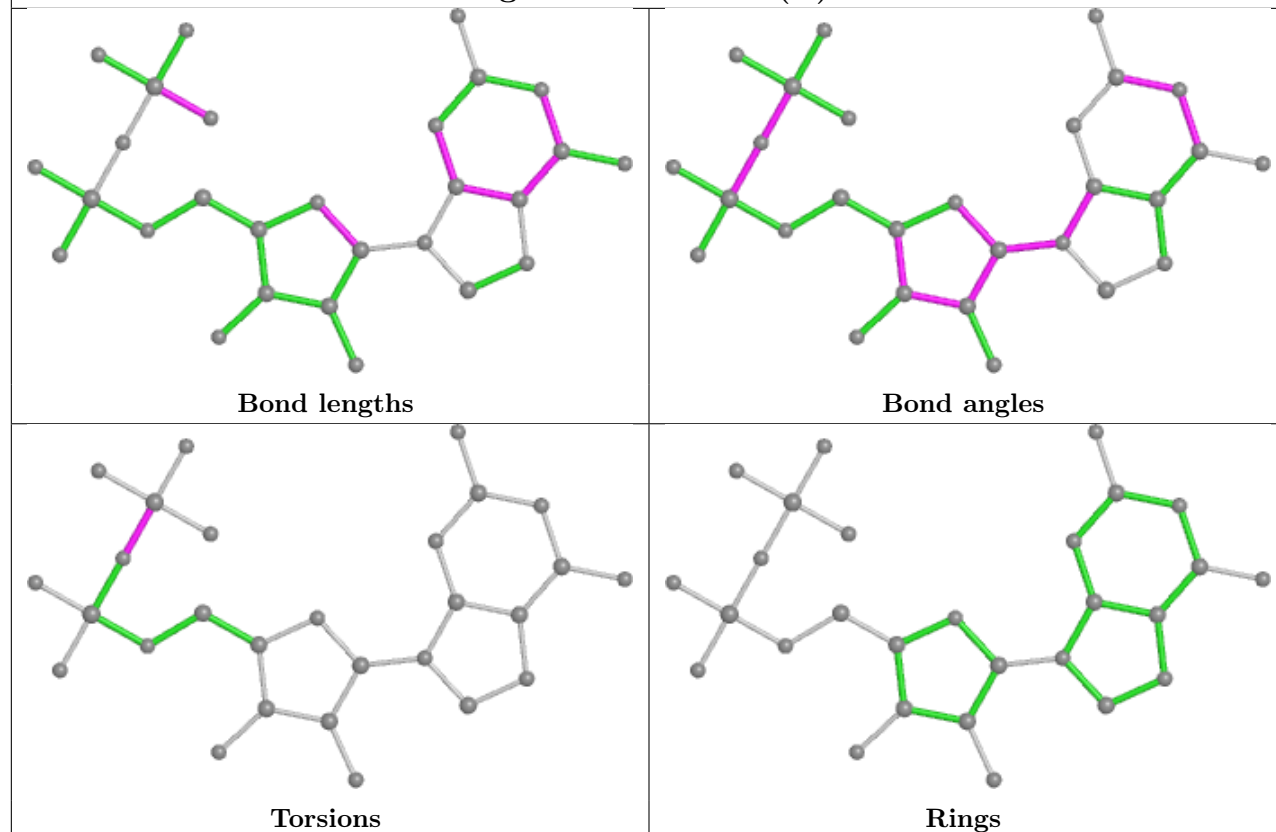
The following is a two-dimensional graphical depiction of Mogul quality analysis of bond lengths, bond angles, torsion angles, and ring geometry for all instances of the Ligand of Interest. In addition, ligands with molecular weight > 250 and outliers as shown on the validation Tables will also be included. For torsion angles, if less than 5% of the Mogul distribution of torsion angles is within 10 degrees of the torsion angle in question, then that torsion angle is considered an outlier. Any bond that is central to one or more torsion angles identified as an outlier by Mogul will be highlighted in the graph. For rings, the root-mean-square deviation (RMSD) between the ring in question and similar rings identified by Mogul is calculated over all ring torsion angles. If the average RMSD is greater than 60 degrees and the minimal RMSD between the ring in question and any Mogul-identified rings is also greater than 60 degrees, then that ring is considered an outlier. The outliers are highlighted in purple. The color gray indicates Mogul did not find sufficient equivalents in the CSD to analyse the geometry.



Ligand CZC A 501 (A)



Ligand CZC A 501 (B)



5.7 Other polymers [i](#)

There are no such residues in this entry.

5.8 Polymer linkage issues [i](#)

There are no chain breaks in this entry.

6 Fit of model and data

6.1 Protein, DNA and RNA chains

In the following table, the column labelled ‘#RSRZ > 2’ contains the number (and percentage) of RSRZ outliers, followed by percent RSRZ outliers for the chain as percentile scores relative to all X-ray entries and entries of similar resolution. The OWAB column contains the minimum, median, 95th percentile and maximum values of the occupancy-weighted average B-factor per residue. The column labelled ‘Q < 0.9’ lists the number of (and percentage) of residues with an average occupancy less than 0.9.

Mol	Chain	Analysed	<RSRZ>	#RSRZ>2	OWAB(Å ²)	Q<0.9
1	A	312/393 (79%)	0.02	9 (2%) 51 49	68, 108, 175, 235	0
1	B	301/393 (76%)	0.01	14 (4%) 31 31	73, 122, 215, 284	0
All	All	613/786 (77%)	0.02	23 (3%) 40 39	68, 117, 205, 284	0

All (23) RSRZ outliers are listed below:

Mol	Chain	Res	Type	RSRZ
1	A	218	LYS	4.1
1	A	215	TYR	3.8
1	A	217	LEU	3.7
1	B	214	LYS	3.0
1	B	215	TYR	2.8
1	B	367	ILE	2.7
1	B	284	GLY	2.7
1	A	216	ASP	2.6
1	B	368	ILE	2.6
1	A	414	ILE	2.6
1	A	281	LEU	2.4
1	A	285	ILE	2.4
1	A	282	LEU	2.4
1	B	241	ASN	2.3
1	B	164	LEU	2.2
1	B	181	PRO	2.2
1	B	364	PHE	2.2
1	B	349	TYR	2.2
1	B	239	LYS	2.2
1	B	373	PRO	2.1
1	B	180	LEU	2.1
1	B	280	SER	2.1
1	A	284	GLY	2.0

6.2 Non-standard residues in protein, DNA, RNA chains [i](#)

There are no non-standard protein/DNA/RNA residues in this entry.

6.3 Carbohydrates [i](#)

There are no monosaccharides in this entry.

6.4 Ligands [i](#)

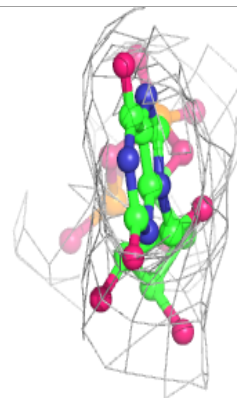
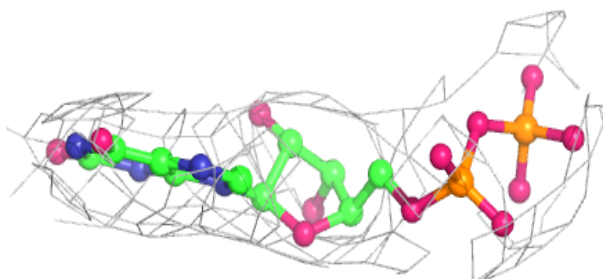
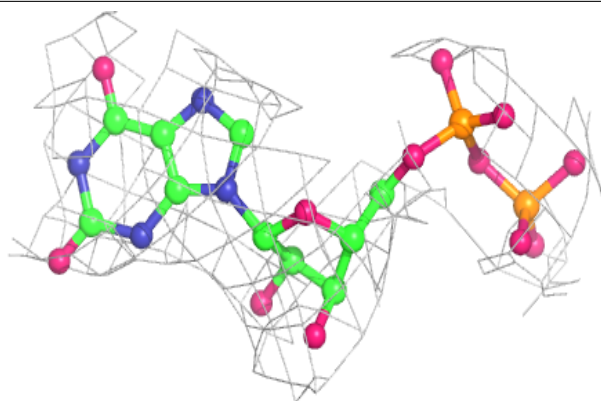
In the following table, the Atoms column lists the number of modelled atoms in the group and the number defined in the chemical component dictionary. The B-factors column lists the minimum, median, 95th percentile and maximum values of B factors of atoms in the group. The column labelled 'Q< 0.9' lists the number of atoms with occupancy less than 0.9.

Mol	Type	Chain	Res	Atoms	RSCC	RSR	B-factors(\AA^2)	Q<0.9
2	CZC	A	501[A]	28/28	0.81	0.24	98,113,125,127	28
2	CZC	A	501[B]	28/28	0.81	0.24	99,115,122,124	28
3	CZF	A	502	32/32	0.82	0.26	97,109,123,125	0

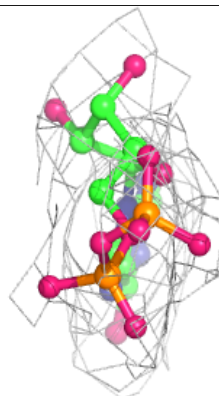
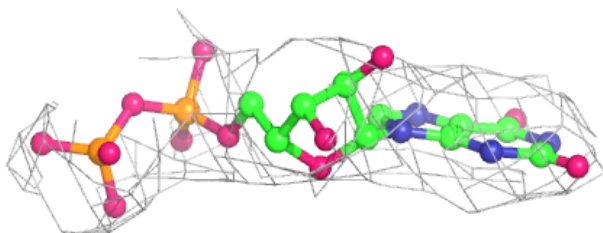
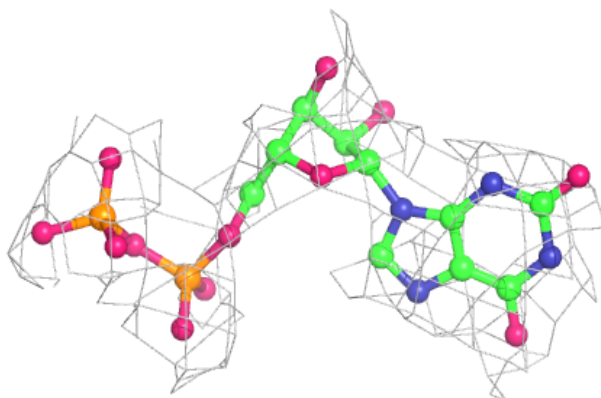
The following is a graphical depiction of the model fit to experimental electron density of all instances of the Ligand of Interest. In addition, ligands with molecular weight > 250 and outliers as shown on the geometry validation Tables will also be included. Each fit is shown from different orientation to approximate a three-dimensional view.

Electron density around CZC A 501 (A):

$2mF_o-DF_c$ (at 0.7 rmsd) in gray
 mF_o-DF_c (at 3 rmsd) in purple (negative)
and green (positive)

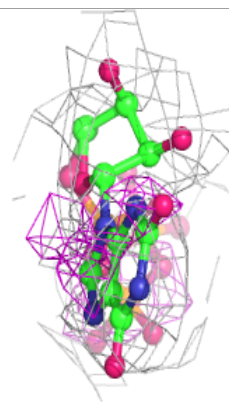
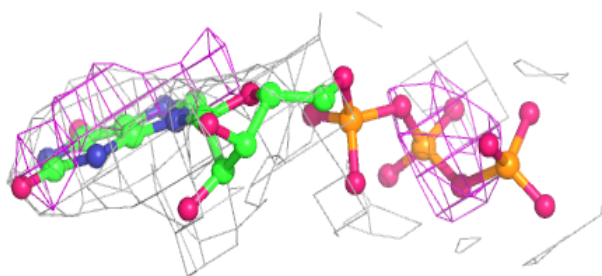
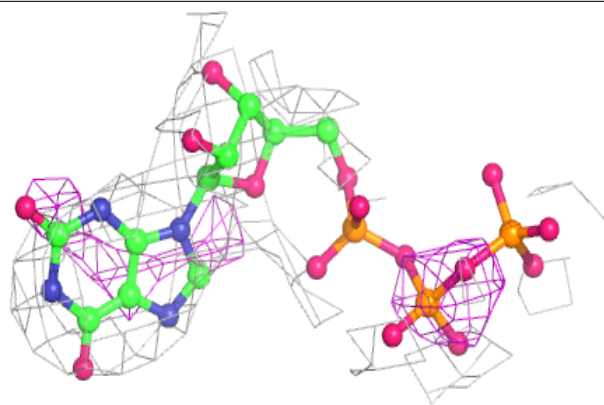
**Electron density around CZC A 501 (B):**

$2mF_o-DF_c$ (at 0.7 rmsd) in gray
 mF_o-DF_c (at 3 rmsd) in purple (negative)
and green (positive)



Electron density around CZF A 502:

$2mF_o - DF_c$ (at 0.7 rmsd) in gray
 $mF_o - DF_c$ (at 3 rmsd) in purple (negative)
and green (positive)



6.5 Other polymers [i](#)

There are no such residues in this entry.