



Full wwPDB X-ray Structure Validation Report ⓘ

May 13, 2020 – 02:33 pm BST

PDB ID : 6ENG
Title : Crystal structure of the 43K ATPase domain of Escherichia coli gyrase B in complex with an aminocoumarin
Authors : Vanden Broeck, A.; McEwen, A.G.; Lamour, V.
Deposited on : 2017-10-04
Resolution : 2.30 Å(reported)

This is a Full wwPDB X-ray Structure Validation Report for a publicly released PDB entry.

We welcome your comments at validation@mail.wwpdb.org

A user guide is available at

<https://www.wwpdb.org/validation/2017/XrayValidationReportHelp>

with specific help available everywhere you see the ⓘ symbol.

The following versions of software and data (see [references ⓘ](#)) were used in the production of this report:

MolProbity : 4.02b-467
Mogul : 1.8.5 (274361), CSD as541be (2020)
Xtriage (Phenix) : 1.13
EDS : 2.11
buster-report : 1.1.7 (2018)
Percentile statistics : 20191225.v01 (using entries in the PDB archive December 25th 2019)
Refmac : 5.8.0158
CCP4 : 7.0.044 (Gargrove)
Ideal geometry (proteins) : Engh & Huber (2001)
Ideal geometry (DNA, RNA) : Parkinson et al. (1996)
Validation Pipeline (wwPDB-VP) : 2.11

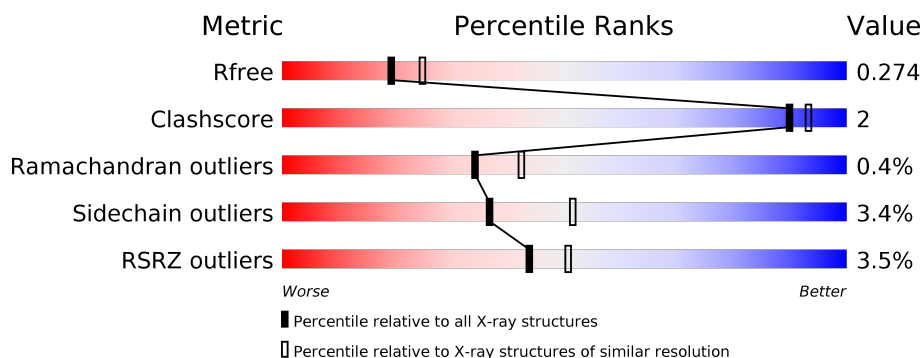
1 Overall quality at a glance

The following experimental techniques were used to determine the structure:

X-RAY DIFFRACTION

The reported resolution of this entry is 2.30 Å.

Percentile scores (ranging between 0-100) for global validation metrics of the entry are shown in the following graphic. The table shows the number of entries on which the scores are based.



Metric	Whole archive (#Entries)	Similar resolution (#Entries, resolution range(Å))
R_{free}	130704	5042 (2.30-2.30)
Clashscore	141614	5643 (2.30-2.30)
Ramachandran outliers	138981	5575 (2.30-2.30)
Sidechain outliers	138945	5575 (2.30-2.30)
RSRZ outliers	127900	4938 (2.30-2.30)

The table below summarises the geometric issues observed across the polymeric chains and their fit to the electron density. The red, orange, yellow and green segments on the lower bar indicate the fraction of residues that contain outliers for ≥ 3 , 2, 1 and 0 types of geometric quality criteria respectively. A grey segment represents the fraction of residues that are not modelled. The numeric value for each fraction is indicated below the corresponding segment, with a dot representing fractions $\leq 5\%$. The upper red bar (where present) indicates the fraction of residues that have poor fit to the electron density. The numeric value is given above the bar.

Mol	Chain	Length	Quality of chain
1	A	396	
1	B	396	

2 Entry composition [i](#)

There are 8 unique types of molecules in this entry. The entry contains 6407 atoms, of which 0 are hydrogens and 0 are deuteriums.

In the tables below, the ZeroOcc column contains the number of atoms modelled with zero occupancy, the AltConf column contains the number of residues with at least one atom in alternate conformation and the Trace column contains the number of residues modelled with at most 2 atoms.

- Molecule 1 is a protein called DNA gyrase subunit B.

Mol	Chain	Residues	Atoms					ZeroOcc	AltConf	Trace
1	A	371	Total	C	N	O	S	0	6	0
			2921	1838	516	556	11			
1	B	379	Total	C	N	O	S	0	5	0
			2972	1862	529	571	10			

There are 6 discrepancies between the modelled and reference sequences:

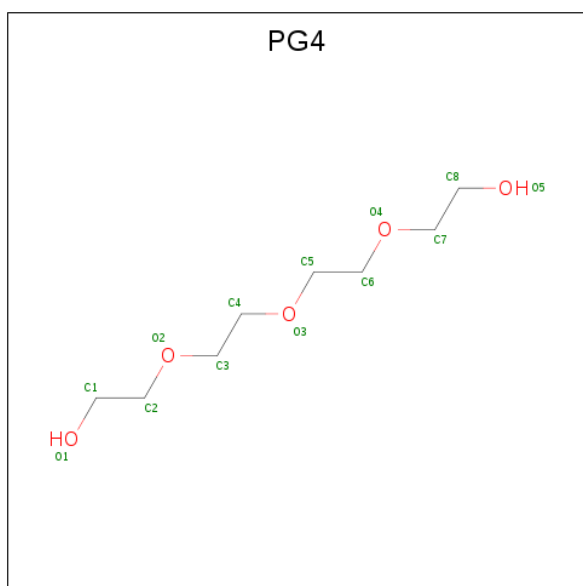
Chain	Residue	Modelled	Actual	Comment	Reference
A	-2	GLY	-	expression tag	UNP P0AES6
A	-1	PRO	-	expression tag	UNP P0AES6
A	0	HIS	-	expression tag	UNP P0AES6
B	-2	GLY	-	expression tag	UNP P0AES6
B	-1	PRO	-	expression tag	UNP P0AES6
B	0	HIS	-	expression tag	UNP P0AES6

- Molecule 2 is PHOSPHATE ION (three-letter code: PO4) (formula: O₄P).



Mol	Chain	Residues	Atoms	ZeroOcc	AltConf
2	A	1	Total O P 5 4 1	0	0
2	A	1	Total O P 5 4 1	0	0
2	B	1	Total O P 5 4 1	0	0
2	B	1	Total O P 5 4 1	0	0
2	B	1	Total O P 5 4 1	0	0

- Molecule 3 is TETRAETHYLENE GLYCOL (three-letter code: PG4) (formula: C₈H₁₈O₅).



Mol	Chain	Residues	Atoms	ZeroOcc	AltConf
3	A	1	Total C O 13 8 5	0	0

- Molecule 4 is CHLORIDE ION (three-letter code: CL) (formula: Cl).

Mol	Chain	Residues	Atoms	ZeroOcc	AltConf
4	B	1	Total Cl 1 1	0	0
4	A	1	Total Cl 1 1	0	0

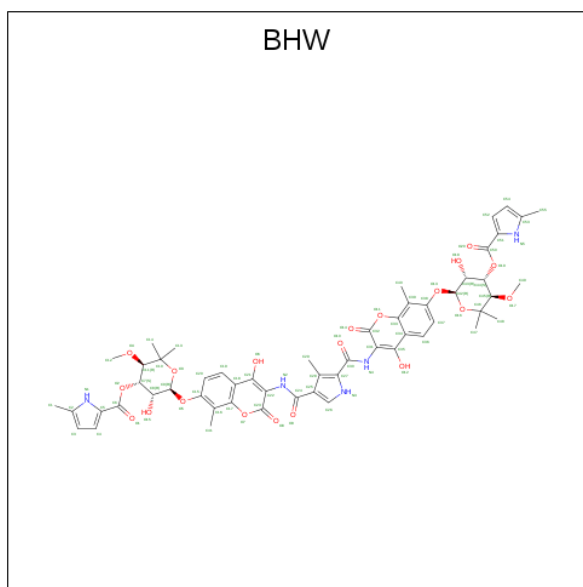
- Molecule 5 is SODIUM ION (three-letter code: NA) (formula: Na).

Mol	Chain	Residues	Atoms	ZeroOcc	AltConf
5	A	1	Total Na 1 1	0	0

- Molecule 6 is POTASSIUM ION (three-letter code: K) (formula: K).

Mol	Chain	Residues	Atoms	ZeroOcc	AltConf
6	A	3	Total K 3 3	0	0

- Molecule 7 is Coumermycin A1 (three-letter code: BHW) (formula: C₅₅H₅₉N₅O₂₀).



Mol	Chain	Residues	Atoms	ZeroOcc	AltConf
7	B	1	Total C N O 80 55 5 20	0	0

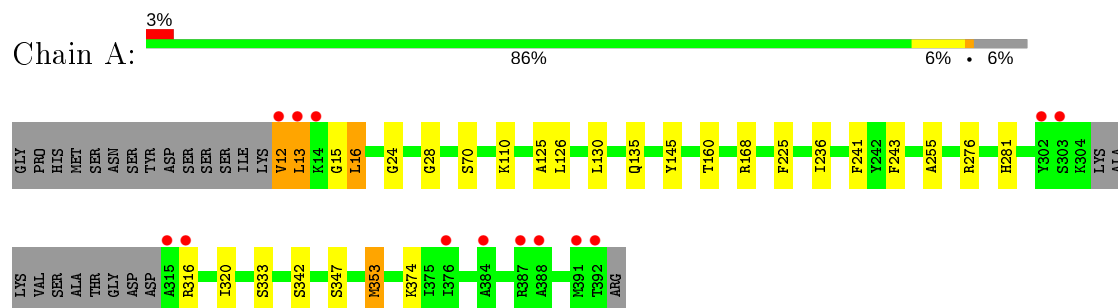
- Molecule 8 is water.

Mol	Chain	Residues	Atoms	ZeroOcc	AltConf
8	A	209	Total O 209 209	0	3
8	B	181	Total O 181 181	0	0

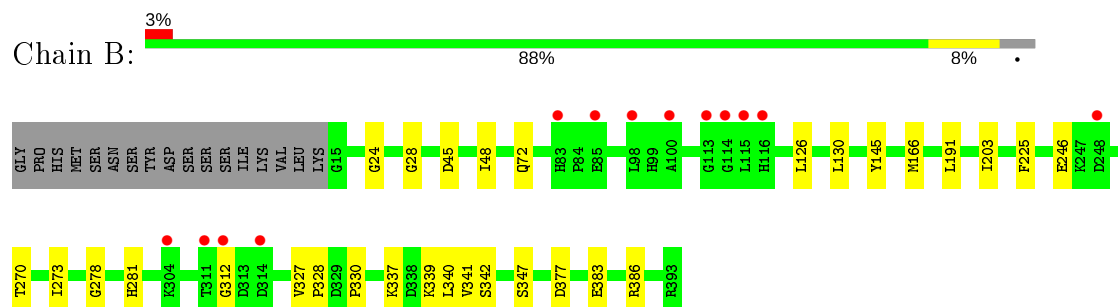
3 Residue-property plots [i](#)

These plots are drawn for all protein, RNA and DNA chains in the entry. The first graphic for a chain summarises the proportions of the various outlier classes displayed in the second graphic. The second graphic shows the sequence view annotated by issues in geometry and electron density. Residues are color-coded according to the number of geometric quality criteria for which they contain at least one outlier: green = 0, yellow = 1, orange = 2 and red = 3 or more. A red dot above a residue indicates a poor fit to the electron density ($RSRZ > 2$). Stretches of 2 or more consecutive residues without any outlier are shown as a green connector. Residues present in the sample, but not in the model, are shown in grey.

• Molecule 1: DNA gyrase subunit B



• Molecule 1: DNA gyrase subunit B



4 Data and refinement statistics

Property	Value	Source
Space group	P 21 21 21	Depositor
Cell constants a, b, c, α , β , γ	47.83Å 128.07Å 159.76Å 90.00° 90.00° 90.00°	Depositor
Resolution (Å)	33.67 – 2.30 45.82 – 2.30	Depositor EDS
% Data completeness (in resolution range)	97.7 (33.67-2.30) 97.3 (45.82-2.30)	Depositor EDS
R_{merge}	0.13	Depositor
R_{sym}	(Not available)	Depositor
$\langle I/\sigma(I) \rangle$ ¹	0.99 (at 2.29Å)	Xtriage
Refinement program	BUSTER	Depositor
R, R_{free}	0.200 , 0.257 0.213 , 0.274	Depositor DCC
R_{free} test set	2184 reflections (5.00%)	wwPDB-VP
Wilson B-factor (Å ²)	48.5	Xtriage
Anisotropy	0.719	Xtriage
Bulk solvent k_{sol} (e/Å ³), B_{sol} (Å ²)	0.33 , 56.6	EDS
L-test for twinning ²	$\langle L \rangle = 0.47$, $\langle L^2 \rangle = 0.31$	Xtriage
Estimated twinning fraction	No twinning to report.	Xtriage
F_o, F_c correlation	0.96	EDS
Total number of atoms	6407	wwPDB-VP
Average B, all atoms (Å ²)	65.0	wwPDB-VP

Xtriage's analysis on translational NCS is as follows: *The analyses of the Patterson function reveals a significant off-origin peak that is 23.37 % of the origin peak, indicating pseudo-translational symmetry. The chance of finding a peak of this or larger height randomly in a structure without pseudo-translational symmetry is equal to 4.7263e-03. The detected translational NCS is most likely also responsible for the elevated intensity ratio.*

¹ Intensities estimated from amplitudes.

² Theoretical values of $\langle |L| \rangle$, $\langle L^2 \rangle$ for acentric reflections are 0.5, 0.333 respectively for untwinned datasets, and 0.375, 0.2 for perfectly twinned datasets.

5 Model quality

5.1 Standard geometry

Bond lengths and bond angles in the following residue types are not validated in this section: CL, NA, PO4, PG4, K, BHW

The Z score for a bond length (or angle) is the number of standard deviations the observed value is removed from the expected value. A bond length (or angle) with $|Z| > 5$ is considered an outlier worth inspection. RMSZ is the root-mean-square of all Z scores of the bond lengths (or angles).

Mol	Chain	Bond lengths		Bond angles	
		RMSZ	# Z >5	RMSZ	# Z >5
1	A	0.51	0/2992	0.72	0/4037
1	B	0.49	0/3040	0.70	0/4102
All	All	0.50	0/6032	0.71	0/8139

There are no bond length outliers.

There are no bond angle outliers.

There are no chirality outliers.

There are no planarity outliers.

5.2 Too-close contacts

In the following table, the Non-H and H(model) columns list the number of non-hydrogen atoms and hydrogen atoms in the chain respectively. The H(added) column lists the number of hydrogen atoms added and optimized by MolProbity. The Clashes column lists the number of clashes within the asymmetric unit, whereas Symm-Clashes lists symmetry related clashes.

Mol	Chain	Non-H	H(model)	H(added)	Clashes	Symm-Clashes
1	A	2921	0	2910	11	0
1	B	2972	0	2948	10	0
2	A	10	0	0	0	0
2	B	15	0	0	0	0
3	A	13	0	18	0	0
4	A	1	0	0	0	0
4	B	1	0	0	0	0
5	A	1	0	0	0	0
6	A	3	0	0	0	0
7	B	80	0	0	0	0
8	A	209	0	0	2	0

Continued on next page...

Continued from previous page...

Mol	Chain	Non-H	H(model)	H(added)	Clashes	Symm-Clashes
8	B	181	0	0	0	0
All	All	6407	0	5876	21	0

The all-atom clashscore is defined as the number of clashes found per 1000 atoms (including hydrogen atoms). The all-atom clashscore for this structure is 2.

All (21) close contacts within the same asymmetric unit are listed below, sorted by their clash magnitude.

Atom-1	Atom-2	Interatomic distance (Å)	Clash overlap (Å)
1:A:110:LYS:HE2	8:A:658:HOH:O	1.96	0.66
1:A:24:GLY:HA2	1:A:28:GLY:O	2.03	0.57
1:A:130:LEU:HB3	1:A:145:TYR:HB2	1.91	0.52
1:B:72[B]:GLN:HB3	1:B:166:MET:HG2	1.91	0.51
1:B:278:GLY:O	1:B:339:LYS:HA	2.11	0.50
1:B:383:GLU:HG2	1:B:386[A]:ARG:HH11	1.77	0.49
1:A:236:ILE:HD13	1:A:374:LYS:HD3	1.95	0.48
1:B:24:GLY:HA2	1:B:28:GLY:O	2.13	0.48
1:B:270:THR:HG21	1:B:340:LEU:HD13	1.95	0.47
1:B:273:ILE:HD13	1:B:337:LYS:HD3	1.99	0.45
1:B:130:LEU:HB3	1:B:145:TYR:HB2	1.98	0.44
1:A:15:GLY:HA3	8:A:587:HOH:O	2.17	0.44
1:A:241:PHE:O	1:A:255:ALA:HA	2.17	0.44
1:B:191:LEU:HD22	1:B:203:ILE:HG21	2.01	0.42
1:B:327:VAL:HA	1:B:328:PRO:HD3	1.97	0.41
1:A:70:SER:HB3	1:A:168:ARG:HD2	2.03	0.41
1:A:16:LEU:HB3	1:A:125:ALA:HB2	2.03	0.41
1:A:135:GLN:HB3	1:A:160:THR:HG21	2.01	0.41
1:A:12:VAL:HB	1:A:13:LEU:H	1.68	0.41
1:B:327:VAL:HG13	1:B:330:PRO:HB3	2.03	0.41
1:A:243:PHE:HE2	1:A:353:MET:HG3	1.86	0.40

There are no symmetry-related clashes.

5.3 Torsion angles

5.3.1 Protein backbone

In the following table, the Percentiles column shows the percent Ramachandran outliers of the chain as a percentile score with respect to all X-ray entries followed by that with respect to entries of similar resolution.

The Analysed column shows the number of residues for which the backbone conformation was analysed, and the total number of residues.

Mol	Chain	Analysed	Favoured	Allowed	Outliers	Percentiles	
1	A	373/396 (94%)	364 (98%)	8 (2%)	1 (0%)	41	50
1	B	382/396 (96%)	368 (96%)	12 (3%)	2 (0%)	29	35
All	All	755/792 (95%)	732 (97%)	20 (3%)	3 (0%)	34	42

All (3) Ramachandran outliers are listed below:

Mol	Chain	Res	Type
1	B	312	GLY
1	B	342	SER
1	A	342	SER

5.3.2 Protein sidechains ⓘ

In the following table, the Percentiles column shows the percent sidechain outliers of the chain as a percentile score with respect to all X-ray entries followed by that with respect to entries of similar resolution.

The Analysed column shows the number of residues for which the sidechain conformation was analysed, and the total number of residues.

Mol	Chain	Analysed	Rotameric	Outliers	Percentiles	
1	A	314/330 (95%)	302 (96%)	12 (4%)	33	47
1	B	317/330 (96%)	308 (97%)	9 (3%)	43	60
All	All	631/660 (96%)	610 (97%)	21 (3%)	37	53

All (21) residues with a non-rotameric sidechain are listed below:

Mol	Chain	Res	Type
1	A	12	VAL
1	A	13	LEU
1	A	16	LEU
1	A	126	LEU
1	A	225	PHE
1	A	276	ARG
1	A	281	HIS
1	A	316	ARG
1	A	320	ILE
1	A	333	SER

Continued on next page...

Continued from previous page...

Mol	Chain	Res	Type
1	A	347	SER
1	A	353	MET
1	B	45	ASP
1	B	48	ILE
1	B	126	LEU
1	B	225	PHE
1	B	246	GLU
1	B	281	HIS
1	B	341	VAL
1	B	347	SER
1	B	377	ASP

Some sidechains can be flipped to improve hydrogen bonding and reduce clashes. All (1) such sidechains are listed below:

Mol	Chain	Res	Type
1	A	351	GLN

5.3.3 RNA [i](#)

There are no RNA molecules in this entry.

5.4 Non-standard residues in protein, DNA, RNA chains [i](#)

There are no non-standard protein/DNA/RNA residues in this entry.

5.5 Carbohydrates [i](#)

There are no carbohydrates in this entry.

5.6 Ligand geometry [i](#)

Of 13 ligands modelled in this entry, 6 are monoatomic - leaving 7 for Mogul analysis.

In the following table, the Counts columns list the number of bonds (or angles) for which Mogul statistics could be retrieved, the number of bonds (or angles) that are observed in the model and the number of bonds (or angles) that are defined in the Chemical Component Dictionary. The Link column lists molecule types, if any, to which the group is linked. The Z score for a bond length (or angle) is the number of standard deviations the observed value is removed from the expected value. A bond length (or angle) with $|Z| > 2$ is considered an outlier worth inspection. RMSZ is the root-mean-square of all Z scores of the bond lengths (or angles).

Mol	Type	Chain	Res	Link	Bond lengths			Bond angles		
					Counts	RMSZ	# Z > 2	Counts	RMSZ	# Z > 2
2	PO4	A	402	-	4,4,4	2.04	2 (50%)	6,6,6	0.56	0
2	PO4	B	404	-	4,4,4	2.51	1 (25%)	6,6,6	0.49	0
3	PG4	A	403	-	12,12,12	0.25	0	11,11,11	0.18	0
2	PO4	A	401	-	4,4,4	2.11	1 (25%)	6,6,6	0.27	0
2	PO4	B	402	-	4,4,4	2.53	1 (25%)	6,6,6	0.54	0
7	BHW	B	401	-	76,88,88	1.41	11 (14%)	99,135,135	1.60	14 (14%)
2	PO4	B	403	-	4,4,4	2.47	1 (25%)	6,6,6	0.60	0

In the following table, the Chirals column lists the number of chiral outliers, the number of chiral centers analysed, the number of these observed in the model and the number defined in the Chemical Component Dictionary. Similar counts are reported in the Torsion and Rings columns. '-' means no outliers of that kind were identified.

Mol	Type	Chain	Res	Link	Chirals	Torsions	Rings
3	PG4	A	403	-	-	4/10/10/10	-
7	BHW	B	401	-	-	8/38/90/90	0/9/9/9

All (17) bond length outliers are listed below:

Mol	Chain	Res	Type	Atoms	Z	Observed(Å)	Ideal(Å)
7	B	401	BHW	C27-C28	5.89	1.52	1.40
7	B	401	BHW	C10-C11	4.39	1.60	1.53
2	B	404	PO4	P-O1	4.16	1.60	1.50
2	B	402	PO4	P-O1	4.15	1.60	1.50
2	B	403	PO4	P-O1	4.03	1.60	1.50
7	B	401	BHW	C5-N1	-3.66	1.26	1.37
7	B	401	BHW	C46-C45	3.55	1.58	1.53
7	B	401	BHW	C27-C30	-2.83	1.46	1.50
7	B	401	BHW	C52-C51	2.80	1.54	1.41
7	B	401	BHW	C4-C5	2.76	1.54	1.41
7	B	401	BHW	C25-C28	2.73	1.44	1.40
2	A	401	PO4	P-O1	2.49	1.56	1.50
7	B	401	BHW	C31-C35	-2.47	1.37	1.40
7	B	401	BHW	C51-N5	-2.40	1.30	1.37
2	A	402	PO4	P-O1	2.28	1.56	1.50
7	B	401	BHW	C22-C21	-2.27	1.37	1.40
2	A	402	PO4	P-O3	2.01	1.60	1.54

All (14) bond angle outliers are listed below:

Mol	Chain	Res	Type	Atoms	Z	Observed(°)	Ideal(°)
7	B	401	BHW	C55-C53-C54	4.38	133.80	128.47
7	B	401	BHW	C10-O3-C9	4.34	125.08	115.44
7	B	401	BHW	C23-C22-N2	-4.09	111.29	119.82
7	B	401	BHW	C32-C31-N4	-3.92	111.64	119.82
7	B	401	BHW	C46-O16-C42	3.81	123.90	115.44
7	B	401	BHW	C21-C22-N2	3.44	129.63	119.64
7	B	401	BHW	O16-C46-C45	3.32	113.00	107.67
7	B	401	BHW	C1-C2-C3	3.17	132.33	128.47
7	B	401	BHW	O16-C42-C43	2.98	116.41	110.42
7	B	401	BHW	C35-C31-N4	2.91	128.09	119.64
7	B	401	BHW	O19-C44-C43	2.76	113.99	107.70
7	B	401	BHW	O2-C7-C8	2.27	112.88	107.70
7	B	401	BHW	C55-C53-N5	-2.15	114.99	119.98
7	B	401	BHW	C41-C16-C17	2.00	121.69	119.39

There are no chirality outliers.

All (12) torsion outliers are listed below:

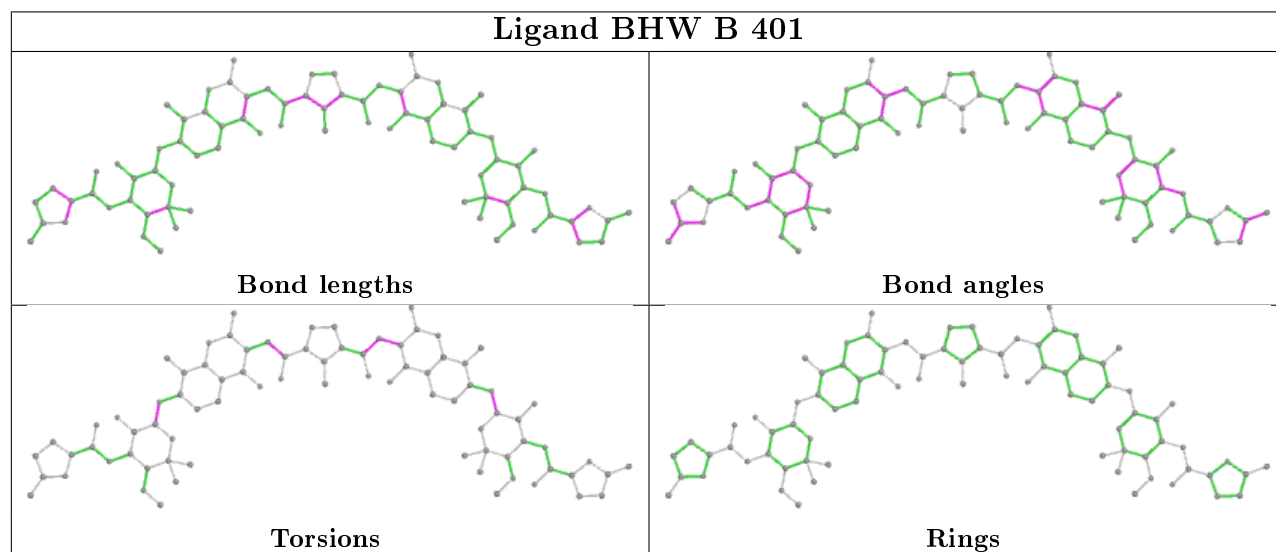
Mol	Chain	Res	Type	Atoms
7	B	401	BHW	C27-C30-N4-C31
7	B	401	BHW	O10-C30-N4-C31
3	A	403	PG4	O2-C3-C4-O3
7	B	401	BHW	O16-C42-O13-C38
7	B	401	BHW	O9-C24-N2-C22
7	B	401	BHW	C21-C22-N2-C24
7	B	401	BHW	O3-C9-O5-C15
7	B	401	BHW	C23-C22-N2-C24
3	A	403	PG4	C1-C2-O2-C3
3	A	403	PG4	C6-C5-O3-C4
7	B	401	BHW	C25-C24-N2-C22
3	A	403	PG4	C3-C4-O3-C5

There are no ring outliers.

No monomer is involved in short contacts.

The following is a two-dimensional graphical depiction of Mogul quality analysis of bond lengths, bond angles, torsion angles, and ring geometry for all instances of the Ligand of Interest. In addition, ligands with molecular weight > 250 and outliers as shown on the validation Tables will also be included. For torsion angles, if less than 5% of the Mogul distribution of torsion angles is within 10 degrees of the torsion angle in question, then that torsion angle is considered an outlier. Any bond that is central to one or more torsion angles identified as an outlier by Mogul will be highlighted in the graph. For rings, the root-mean-square deviation (RMSD) between the ring in question and similar rings identified by Mogul is calculated over all ring torsion angles. If the

average RMSD is greater than 60 degrees and the minimal RMSD between the ring in question and any Mogul-identified rings is also greater than 60 degrees, then that ring is considered an outlier. The outliers are highlighted in purple. The color gray indicates Mogul did not find sufficient equivalents in the CSD to analyse the geometry.



5.7 Other polymers [i](#)

There are no such residues in this entry.

5.8 Polymer linkage issues [i](#)

There are no chain breaks in this entry.

6 Fit of model and data ⓘ

6.1 Protein, DNA and RNA chains ⓘ

In the following table, the column labelled ‘#RSRZ> 2’ contains the number (and percentage) of RSRZ outliers, followed by percent RSRZ outliers for the chain as percentile scores relative to all X-ray entries and entries of similar resolution. The OWAB column contains the minimum, median, 95th percentile and maximum values of the occupancy-weighted average B-factor per residue. The column labelled ‘Q< 0.9’ lists the number of (and percentage) of residues with an average occupancy less than 0.9.

Mol	Chain	Analysed	<RSRZ>	#RSRZ>2	OWAB(Å ²)	Q<0.9
1	A	371/396 (93%)	0.22	13 (3%) 44 51	38, 57, 97, 171	0
1	B	379/396 (95%)	0.30	13 (3%) 45 52	44, 64, 100, 117	0
All	All	750/792 (94%)	0.26	26 (3%) 44 51	38, 61, 99, 171	0

All (26) RSRZ outliers are listed below:

Mol	Chain	Res	Type	RSRZ
1	A	12	VAL	7.6
1	A	392	THR	6.6
1	A	391	MET	6.1
1	B	115	LEU	6.0
1	B	114	GLY	5.8
1	B	314	ASP	3.9
1	A	13	LEU	3.7
1	A	14	LYS	3.6
1	B	100	ALA	3.3
1	B	85	GLU	3.2
1	B	312	GLY	3.2
1	B	98	LEU	3.2
1	A	376	ILE	3.0
1	A	316	ARG	2.9
1	B	116	HIS	2.9
1	A	302	TYR	2.9
1	A	315	ALA	2.7
1	B	311	THR	2.6
1	B	113	GLY	2.5
1	B	304	LYS	2.5
1	A	303	SER	2.4
1	A	388	ALA	2.4
1	B	248	ASP	2.3
1	A	384	ALA	2.1

Continued on next page...

Continued from previous page...

Mol	Chain	Res	Type	RSRZ
1	B	83	HIS	2.0
1	A	387	ARG	2.0

6.2 Non-standard residues in protein, DNA, RNA chains [i](#)

There are no non-standard protein/DNA/RNA residues in this entry.

6.3 Carbohydrates [i](#)

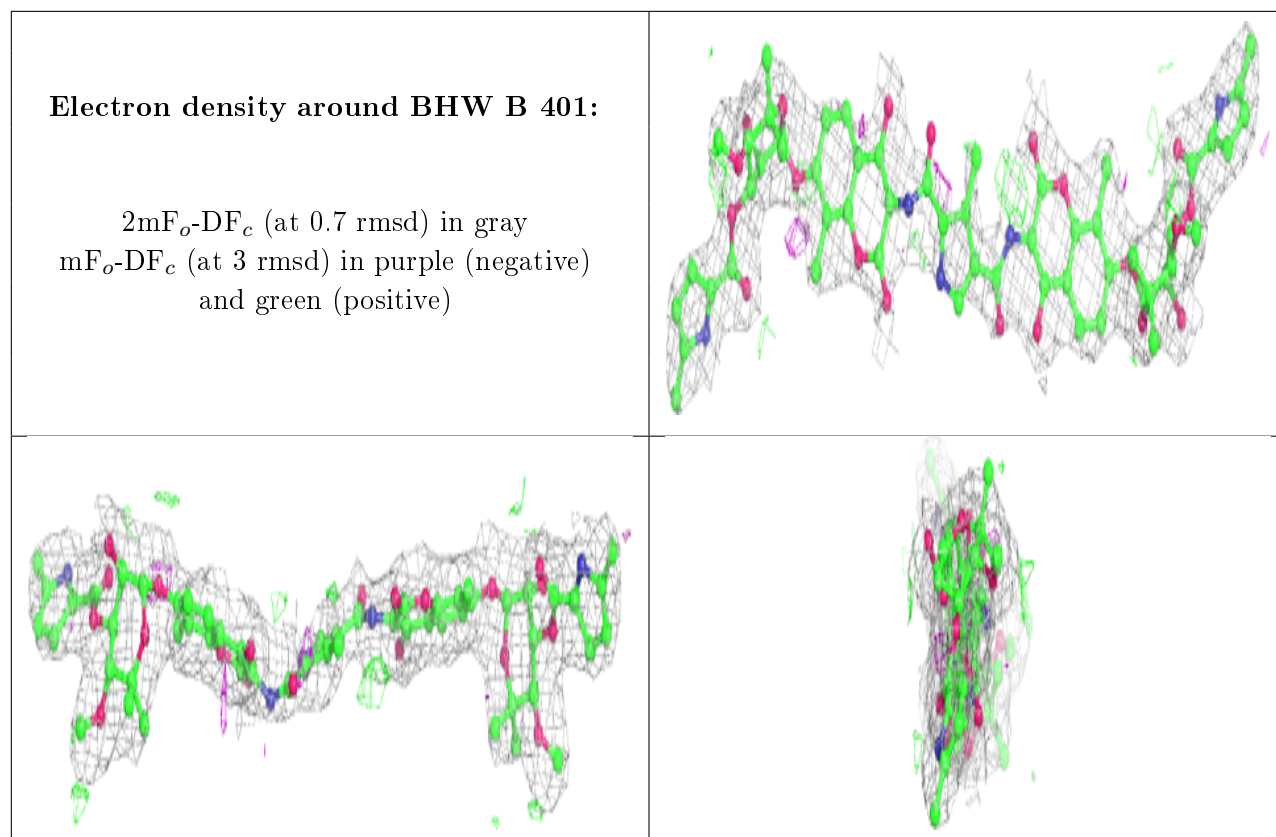
There are no carbohydrates in this entry.

6.4 Ligands [i](#)

In the following table, the Atoms column lists the number of modelled atoms in the group and the number defined in the chemical component dictionary. The B-factors column lists the minimum, median, 95th percentile and maximum values of B factors of atoms in the group. The column labelled 'Q<0.9' lists the number of atoms with occupancy less than 0.9.

Mol	Type	Chain	Res	Atoms	RSCC	RSR	B-factors(Å ²)	Q<0.9
3	PG4	A	403	13/13	0.71	0.26	80,92,98,98	0
2	PO4	B	404	5/5	0.83	0.16	136,136,137,137	0
6	K	A	408	1/1	0.85	0.12	86,86,86,86	0
4	CL	B	405	1/1	0.86	0.14	83,83,83,83	0
4	CL	A	404	1/1	0.88	0.19	88,88,88,88	0
2	PO4	A	401	5/5	0.88	0.17	100,102,104,104	0
6	K	A	406	1/1	0.90	0.12	83,83,83,83	0
2	PO4	B	402	5/5	0.93	0.12	95,95,97,98	0
7	BHW	B	401	80/80	0.94	0.17	38,57,101,103	0
5	NA	A	405	1/1	0.94	0.11	43,43,43,43	0
2	PO4	A	402	5/5	0.95	0.17	79,81,81,86	0
2	PO4	B	403	5/5	0.96	0.12	83,85,87,90	0
6	K	A	407	1/1	0.97	0.08	54,54,54,54	0

The following is a graphical depiction of the model fit to experimental electron density of all instances of the Ligand of Interest. In addition, ligands with molecular weight > 250 and outliers as shown on the geometry validation Tables will also be included. Each fit is shown from different orientation to approximate a three-dimensional view.



6.5 Other polymers [i](#)

There are no such residues in this entry.