



# wwPDB X-ray Structure Validation Summary Report ⓘ

Feb 23, 2022 – 04:09 PM JST

PDB ID : 7EPM  
Title : human LDHC complexed with NAD<sup>+</sup> and ethylamino acetic acid  
Authors : Yu, Y.; Chen, Q.  
Deposited on : 2021-04-27  
Resolution : 3.00 Å(reported)

This is a wwPDB X-ray Structure Validation Summary Report for a publicly released PDB entry.

We welcome your comments at [validation@mail.wwpdb.org](mailto:validation@mail.wwpdb.org)

A user guide is available at

<https://www.wwpdb.org/validation/2017/XrayValidationReportHelp>

with specific help available everywhere you see the ⓘ symbol.

---

The following versions of software and data (see [references ⓘ](#)) were used in the production of this report:

MolProbity : 4.02b-467  
Mogul : 1.8.5 (274361), CSD as541be (2020)  
Xtriage (Phenix) : 1.13  
EDS : 2.26  
buster-report : 1.1.7 (2018)  
Percentile statistics : 20191225.v01 (using entries in the PDB archive December 25th 2019)  
Refmac : 5.8.0158  
CCP4 : 7.0.044 (Gargrove)  
Ideal geometry (proteins) : Engh & Huber (2001)  
Ideal geometry (DNA, RNA) : Parkinson et al. (1996)  
Validation Pipeline (wwPDB-VP) : 2.26

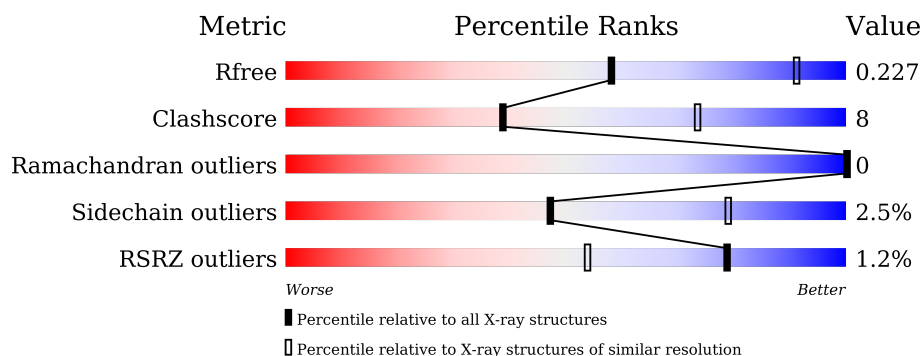
# 1 Overall quality at a glance

The following experimental techniques were used to determine the structure:

*X-RAY DIFFRACTION*

The reported resolution of this entry is 3.00 Å.

Percentile scores (ranging between 0-100) for global validation metrics of the entry are shown in the following graphic. The table shows the number of entries on which the scores are based.



Metric	Whole archive (#Entries)	Similar resolution (#Entries, resolution range(Å))
$R_{free}$	130704	2092 (3.00-3.00)
Clashscore	141614	2416 (3.00-3.00)
Ramachandran outliers	138981	2333 (3.00-3.00)
Sidechain outliers	138945	2336 (3.00-3.00)
RSRZ outliers	127900	1990 (3.00-3.00)

The table below summarises the geometric issues observed across the polymeric chains and their fit to the electron density. The red, orange, yellow and green segments of the lower bar indicate the fraction of residues that contain outliers for  $\geq 3$ , 2, 1 and 0 types of geometric quality criteria respectively. A grey segment represents the fraction of residues that are not modelled. The numeric value for each fraction is indicated below the corresponding segment, with a dot representing fractions  $\leq 5\%$ . The upper red bar (where present) indicates the fraction of residues that have poor fit to the electron density. The numeric value is given above the bar.

Mol	Chain	Length	Quality of chain
1	A	341	<div> <div style="width: 100%; height: 10px; position: relative;"> <div style="position: absolute; top: -10px; left: 0;">%</div> <div style="position: absolute; top: 10px; left: 0;">82%</div> <div style="position: absolute; top: 10px; right: 0;">15%</div> <div style="position: absolute; top: 10px; right: 0;">...</div> </div> </div>
1	B	341	<div> <div style="width: 100%; height: 10px; position: relative;"> <div style="position: absolute; top: -10px; left: 0;">%</div> <div style="position: absolute; top: 10px; left: 0;">77%</div> <div style="position: absolute; top: 10px; right: 0;">18%</div> <div style="position: absolute; top: 10px; right: 0;">..</div> </div> </div>

The following table lists non-polymeric compounds, carbohydrate monomers and non-standard residues in protein, DNA, RNA chains that are outliers for geometric or electron-density-fit criteria:

Mol	Type	Chain	Res	Chirality	Geometry	Clashes	Electron density
4	SO4	B	407	-	-	X	-

## 2 Entry composition

There are 5 unique types of molecules in this entry. The entry contains 10310 atoms, of which 5058 are hydrogens and 0 are deuteriums.

In the tables below, the ZeroOcc column contains the number of atoms modelled with zero occupancy, the AltConf column contains the number of residues with at least one atom in alternate conformation and the Trace column contains the number of residues modelled with at most 2 atoms.

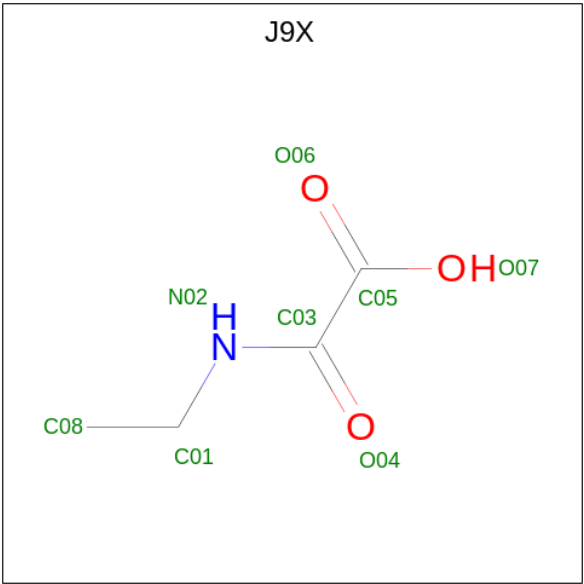
- Molecule 1 is a protein called L-lactate dehydrogenase C chain.

Mol	Chain	Residues	Atoms						ZeroOcc	AltConf	Trace
1	A	335	Total	C	H	N	O	S	0	0	0
			5065	1640	2491	437	485	12			
1	B	326	Total	C	H	N	O	S	0	0	0
			5005	1595	2503	425	470	12			

There are 24 discrepancies between the modelled and reference sequences:

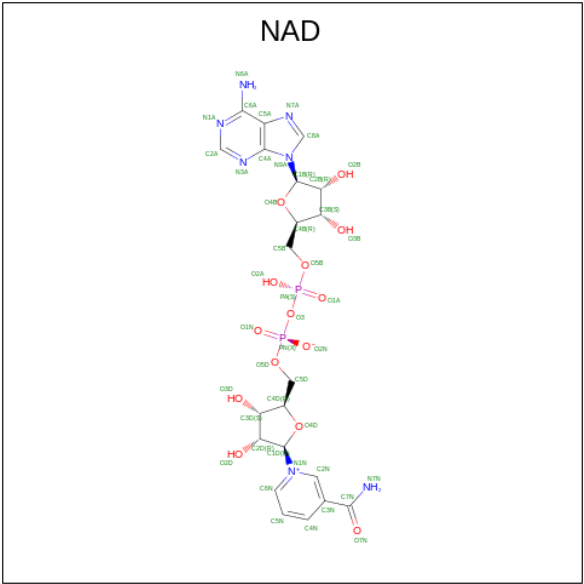
Chain	Residue	Modelled	Actual	Comment	Reference
A	1	MET	-	initiating methionine	UNP P07864
A	2	ALA	-	expression tag	UNP P07864
A	56	GLU	LEU	engineered mutation	UNP P07864
A	332	GLN	ILE	engineered mutation	UNP P07864
A	334	LEU	-	expression tag	UNP P07864
A	335	GLU	-	expression tag	UNP P07864
A	336	HIS	-	expression tag	UNP P07864
A	337	HIS	-	expression tag	UNP P07864
A	338	HIS	-	expression tag	UNP P07864
A	339	HIS	-	expression tag	UNP P07864
A	340	HIS	-	expression tag	UNP P07864
A	341	HIS	-	expression tag	UNP P07864
B	1	MET	-	initiating methionine	UNP P07864
B	2	ALA	-	expression tag	UNP P07864
B	56	GLU	LEU	engineered mutation	UNP P07864
B	332	GLN	ILE	engineered mutation	UNP P07864
B	334	LEU	-	expression tag	UNP P07864
B	335	GLU	-	expression tag	UNP P07864
B	336	HIS	-	expression tag	UNP P07864
B	337	HIS	-	expression tag	UNP P07864
B	338	HIS	-	expression tag	UNP P07864
B	339	HIS	-	expression tag	UNP P07864
B	340	HIS	-	expression tag	UNP P07864
B	341	HIS	-	expression tag	UNP P07864

- Molecule 2 is 2-(ethylamino)-2-oxidanylidene-ethanoic acid (three-letter code: J9X) (formula: C<sub>4</sub>H<sub>7</sub>NO<sub>3</sub>) (labeled as "Ligand of Interest" by depositor).



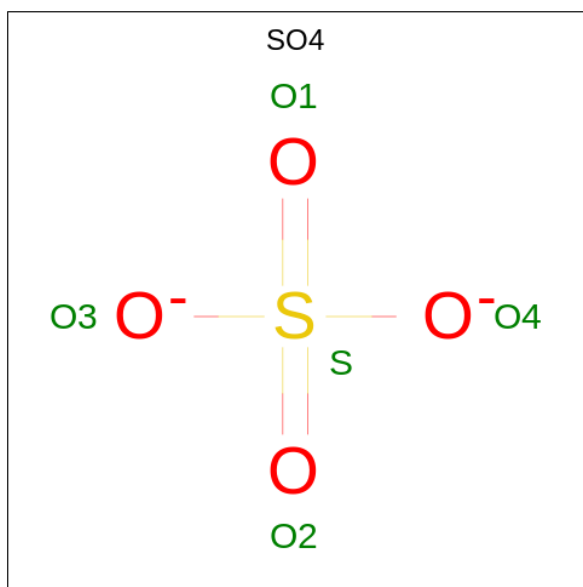
Mol	Chain	Residues	Atoms					ZeroOcc	AltConf
2	A	1	Total	C	H	N	O	0	0
			14	4	6	1	3		
2	B	1	Total	C	H	N	O	0	0
			14	4	6	1	3		

- Molecule 3 is NICOTINAMIDE-ADENINE-DINUCLEOTIDE (three-letter code: NAD) (formula: C<sub>21</sub>H<sub>27</sub>N<sub>7</sub>O<sub>14</sub>P<sub>2</sub>).



Mol	Chain	Residues	Atoms					ZeroOcc	AltConf
3	A	1	Total	C	H	N	O	P	
			70	21	26	7	14	2	
3	B	1	Total	C	H	N	O	P	
			70	21	26	7	14	2	

- Molecule 4 is SULFATE ION (three-letter code: SO4) (formula: O<sub>4</sub>S).



Mol	Chain	Residues	Atoms		ZeroOcc	AltConf
4	A	1	Total	O S	0	0
			5	4 1		
4	A	1	Total	O S	0	0
			5	4 1		
4	A	1	Total	O S	0	0
			5	4 1		
4	B	1	Total	O S	0	0
			5	4 1		
4	B	1	Total	O S	0	0
			5	4 1		
4	B	1	Total	O S	0	0
			5	4 1		
4	B	1	Total	O S	0	0
			5	4 1		
4	B	1	Total	O S	0	0
			5	4 1		

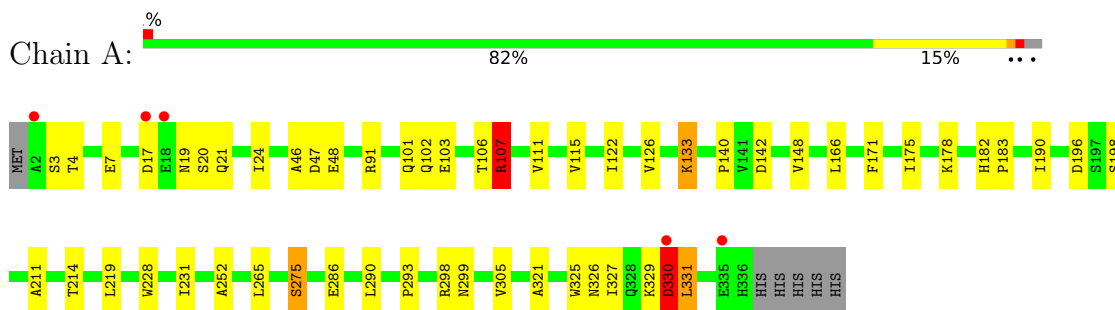
- Molecule 5 is water.

Mol	Chain	Residues	Atoms		ZeroOcc	AltConf
5	A	15	Total 15	O 15	0	0
5	B	12	Total 12	O 12	0	0

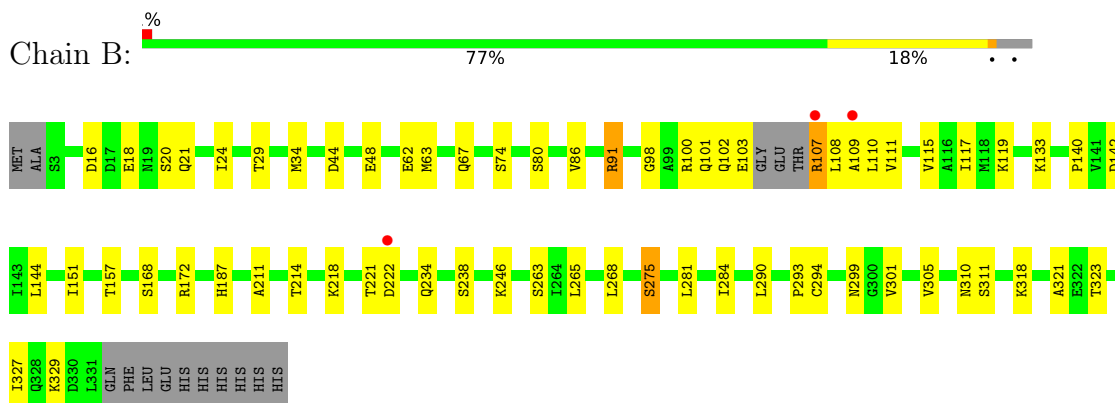
### 3 Residue-property plots

These plots are drawn for all protein, RNA, DNA and oligosaccharide chains in the entry. The first graphic for a chain summarises the proportions of the various outlier classes displayed in the second graphic. The second graphic shows the sequence view annotated by issues in geometry and electron density. Residues are color-coded according to the number of geometric quality criteria for which they contain at least one outlier: green = 0, yellow = 1, orange = 2 and red = 3 or more. A red dot above a residue indicates a poor fit to the electron density ( $RSRZ > 2$ ). Stretches of 2 or more consecutive residues without any outlier are shown as a green connector. Residues present in the sample, but not in the model, are shown in grey.

#### • Molecule 1: L-lactate dehydrogenase C chain



#### • Molecule 1: L-lactate dehydrogenase C chain



## 4 Data and refinement statistics

Property	Value	Source
Space group	P 61 2 2	Depositor
Cell constants a, b, c, $\alpha$ , $\beta$ , $\gamma$	177.89Å 177.89Å 179.21Å 90.00° 90.00° 120.00°	Depositor
Resolution (Å)	44.47 – 3.00 44.47 – 3.00	Depositor EDS
% Data completeness (in resolution range)	98.7 (44.47-3.00) 98.7 (44.47-3.00)	Depositor EDS
$R_{merge}$	(Not available)	Depositor
$R_{sym}$	(Not available)	Depositor
$\langle I/\sigma(I) \rangle$ <sup>1</sup>	2.00 (at 3.01Å)	Xtriage
Refinement program	PHENIX 1.15.2_3472, PHENIX 1.15.2_3472	Depositor
R, $R_{free}$	0.203 , 0.227 0.203 , 0.227	Depositor DCC
$R_{free}$ test set	1358 reflections (4.04%)	wwPDB-VP
Wilson B-factor (Å <sup>2</sup> )	60.9	Xtriage
Anisotropy	0.037	Xtriage
Bulk solvent $k_{sol}$ (e/Å <sup>3</sup> ), $B_{sol}$ (Å <sup>2</sup> )	0.37 , 29.9	EDS
L-test for twinning <sup>2</sup>	$\langle  L  \rangle = 0.50$ , $\langle L^2 \rangle = 0.34$	Xtriage
Estimated twinning fraction	No twinning to report.	Xtriage
$F_o, F_c$ correlation	0.93	EDS
Total number of atoms	10310	wwPDB-VP
Average B, all atoms (Å <sup>2</sup> )	58.0	wwPDB-VP

Xtriage's analysis on translational NCS is as follows: *The largest off-origin peak in the Patterson function is 2.59% of the height of the origin peak. No significant pseudotranslation is detected.*

<sup>1</sup>Intensities estimated from amplitudes.

<sup>2</sup>Theoretical values of  $\langle |L| \rangle$ ,  $\langle L^2 \rangle$  for acentric reflections are 0.5, 0.333 respectively for untwinned datasets, and 0.375, 0.2 for perfectly twinned datasets.

## 5 Model quality

### 5.1 Standard geometry

Bond lengths and bond angles in the following residue types are not validated in this section: NAD, SO4, J9X

The Z score for a bond length (or angle) is the number of standard deviations the observed value is removed from the expected value. A bond length (or angle) with  $|Z| > 5$  is considered an outlier worth inspection. RMSZ is the root-mean-square of all Z scores of the bond lengths (or angles).

Mol	Chain	Bond lengths		Bond angles	
		RMSZ	$\# Z  > 5$	RMSZ	$\# Z  > 5$
1	A	0.50	4/2616 (0.2%)	0.96	7/3541 (0.2%)
1	B	0.36	0/2541	0.55	2/3438 (0.1%)
All	All	0.44	4/5157 (0.1%)	0.79	9/6979 (0.1%)

Chiral center outliers are detected by calculating the chiral volume of a chiral center and verifying if the center is modelled as a planar moiety or with the opposite hand. A planarity outlier is detected by checking planarity of atoms in a peptide group, atoms in a mainchain group or atoms of a sidechain that are expected to be planar.

Mol	Chain	#Chirality outliers	#Planarity outliers
1	A	0	1

All (4) bond length outliers are listed below:

Mol	Chain	Res	Type	Atoms	Z	Observed(Å)	Ideal(Å)
1	A	330	ASP	CB-CG	8.22	1.69	1.51
1	A	107	ARG	CG-CD	-6.83	1.34	1.51
1	A	107	ARG	CB-CG	-6.42	1.35	1.52
1	A	329	LYS	CB-CG	5.00	1.66	1.52

The worst 5 of 9 bond angle outliers are listed below:

Mol	Chain	Res	Type	Atoms	Z	Observed(°)	Ideal(°)
1	A	107	ARG	NE-CZ-NH1	-27.39	106.61	120.30
1	A	107	ARG	NE-CZ-NH2	23.29	131.94	120.30
1	A	107	ARG	CD-NE-CZ	-14.73	102.98	123.60
1	A	107	ARG	CG-CD-NE	-13.31	83.84	111.80
1	A	330	ASP	CB-CG-OD2	13.06	130.05	118.30

There are no chirality outliers.

All (1) planarity outliers are listed below:

Mol	Chain	Res	Type	Group
1	A	330	ASP	Sidechain

## 5.2 Too-close contacts

In the following table, the Non-H and H(model) columns list the number of non-hydrogen atoms and hydrogen atoms in the chain respectively. The H(added) column lists the number of hydrogen atoms added and optimized by MolProbity. The Clashes column lists the number of clashes within the asymmetric unit, whereas Symm-Clashes lists symmetry-related clashes.

Mol	Chain	Non-H	H(model)	H(added)	Clashes	Symm-Clashes
1	A	2574	2491	2656	36	1
1	B	2502	2503	2593	44	2
2	A	8	6	0	0	0
2	B	8	6	0	0	0
3	A	44	26	25	0	0
3	B	44	26	25	1	0
4	A	15	0	0	1	0
4	B	30	0	0	4	0
5	A	15	0	0	1	0
5	B	12	0	0	1	0
All	All	5252	5058	5299	79	2

The all-atom clashscore is defined as the number of clashes found per 1000 atoms (including hydrogen atoms). The all-atom clashscore for this structure is 8.

The worst 5 of 79 close contacts within the same asymmetric unit are listed below, sorted by their clash magnitude.

Atom-1	Atom-2	Interatomic distance (Å)	Clash overlap (Å)
1:B:311:SER:OG	4:B:407:SO4:O1	1.93	0.86
1:A:327:ILE:HA	1:A:330:ASP:HB2	1.63	0.80
1:A:326:ASN:O	1:A:330:ASP:N	2.17	0.76
1:B:108:LEU:HD23	1:B:108:LEU:O	1.90	0.71
1:A:103:GLU:HG3	1:A:140:PRO:HB3	1.75	0.68

All (2) symmetry-related close contacts are listed below. The label for Atom-2 includes the symmetry operator and encoded unit-cell translations to be applied.

Atom-1	Atom-2	Interatomic distance (Å)	Clash overlap (Å)
1:B:62:GLU:OE1	1:B:246:LYS:NZ[10_554]	2.06	0.14
1:A:17:ASP:OD1	1:B:299:ASN:HD21[10_554]	1.48	0.12

## 5.3 Torsion angles [i](#)

### 5.3.1 Protein backbone [i](#)

In the following table, the Percentiles column shows the percent Ramachandran outliers of the chain as a percentile score with respect to all X-ray entries followed by that with respect to entries of similar resolution.

The Analysed column shows the number of residues for which the backbone conformation was analysed, and the total number of residues.

Mol	Chain	Analysed	Favoured	Allowed	Outliers	Percentiles	
1	A	333/341 (98%)	325 (98%)	8 (2%)	0	100	100
1	B	322/341 (94%)	314 (98%)	8 (2%)	0	100	100
All	All	655/682 (96%)	639 (98%)	16 (2%)	0	100	100

There are no Ramachandran outliers to report.

### 5.3.2 Protein sidechains [i](#)

In the following table, the Percentiles column shows the percent sidechain outliers of the chain as a percentile score with respect to all X-ray entries followed by that with respect to entries of similar resolution.

The Analysed column shows the number of residues for which the sidechain conformation was analysed, and the total number of residues.

Mol	Chain	Analysed	Rotameric	Outliers	Percentiles	
1	A	289/295 (98%)	282 (98%)	7 (2%)	49	79
1	B	282/295 (96%)	275 (98%)	7 (2%)	47	79
All	All	571/590 (97%)	557 (98%)	14 (2%)	47	79

5 of 14 residues with a non-rotameric sidechain are listed below:

Mol	Chain	Res	Type
1	B	80	SER
1	B	107	ARG

*Continued on next page...*

*Continued from previous page...*

Mol	Chain	Res	Type
1	B	329	LYS
1	B	275	SER
1	B	318	LYS

Sometimes sidechains can be flipped to improve hydrogen bonding and reduce clashes. All (2) such sidechains are listed below:

Mol	Chain	Res	Type
1	A	187	HIS
1	B	232	HIS

### 5.3.3 RNA [i](#)

There are no RNA molecules in this entry.

## 5.4 Non-standard residues in protein, DNA, RNA chains [i](#)

There are no non-standard protein/DNA/RNA residues in this entry.

## 5.5 Carbohydrates [i](#)

There are no monosaccharides in this entry.

## 5.6 Ligand geometry [i](#)

13 ligands are modelled in this entry.

In the following table, the Counts columns list the number of bonds (or angles) for which Mogul statistics could be retrieved, the number of bonds (or angles) that are observed in the model and the number of bonds (or angles) that are defined in the Chemical Component Dictionary. The Link column lists molecule types, if any, to which the group is linked. The Z score for a bond length (or angle) is the number of standard deviations the observed value is removed from the expected value. A bond length (or angle) with  $|Z| > 2$  is considered an outlier worth inspection. RMSZ is the root-mean-square of all Z scores of the bond lengths (or angles).

Mol	Type	Chain	Res	Link	Bond lengths			Bond angles		
					Counts	RMSZ	$\# Z  > 2$	Counts	RMSZ	$\# Z  > 2$
2	J9X	A	401	-	4,7,7	1.28	0	4,8,8	2.39	1 (25%)
4	SO4	B	405	-	4,4,4	0.20	0	6,6,6	0.26	0
4	SO4	A	403	-	4,4,4	0.19	0	6,6,6	0.26	0

Mol	Type	Chain	Res	Link	Bond lengths			Bond angles		
					Counts	RMSZ	# Z  > 2	Counts	RMSZ	# Z  > 2
2	J9X	B	401	-	4,7,7	1.04	0	4,8,8	2.64	2 (50%)
4	SO4	A	404	-	4,4,4	0.16	0	6,6,6	0.16	0
4	SO4	B	407	-	4,4,4	0.14	0	6,6,6	0.10	0
3	NAD	B	402	-	42,48,48	2.69	14 (33%)	50,73,73	1.82	13 (26%)
4	SO4	B	408	-	4,4,4	0.16	0	6,6,6	0.16	0
4	SO4	B	404	-	4,4,4	0.12	0	6,6,6	0.13	0
4	SO4	B	406	-	4,4,4	0.14	0	6,6,6	0.05	0
4	SO4	A	405	-	4,4,4	0.16	0	6,6,6	0.19	0
3	NAD	A	402	-	42,48,48	2.89	15 (35%)	50,73,73	1.94	15 (30%)
4	SO4	B	403	-	4,4,4	0.14	0	6,6,6	0.18	0

In the following table, the Chirals column lists the number of chiral outliers, the number of chiral centers analysed, the number of these observed in the model and the number defined in the Chemical Component Dictionary. Similar counts are reported in the Torsion and Rings columns. '-' means no outliers of that kind were identified.

Mol	Type	Chain	Res	Link	Chirals	Torsions	Rings
3	NAD	A	402	-	-	11/26/62/62	0/5/5/5
2	J9X	A	401	-	-	0/3/7/7	-
2	J9X	B	401	-	-	0/3/7/7	-
3	NAD	B	402	-	-	11/26/62/62	0/5/5/5

The worst 5 of 29 bond length outliers are listed below:

Mol	Chain	Res	Type	Atoms	Z	Observed(Å)	Ideal(Å)
3	A	402	NAD	O4D-C1D	11.77	1.57	1.41
3	B	402	NAD	O4D-C1D	10.29	1.55	1.41
3	A	402	NAD	C2N-N1N	5.50	1.41	1.35
3	A	402	NAD	O5D-C5D	-5.38	1.24	1.44
3	B	402	NAD	PA-O5B	5.37	1.81	1.59

The worst 5 of 31 bond angle outliers are listed below:

Mol	Chain	Res	Type	Atoms	Z	Observed(°)	Ideal(°)
3	A	402	NAD	O4D-C4D-C3D	-4.93	95.35	105.11
3	B	402	NAD	O4D-C4D-C3D	-4.38	96.44	105.11
3	A	402	NAD	O4B-C1B-C2B	-4.35	100.56	106.93
2	A	401	J9X	C05-C03-N02	4.24	119.81	115.60
2	B	401	J9X	C05-C03-N02	4.24	119.81	115.60

There are no chirality outliers.

5 of 22 torsion outliers are listed below:

Mol	Chain	Res	Type	Atoms
3	A	402	NAD	C5B-O5B-PA-O2A
3	A	402	NAD	C5B-O5B-PA-O3
3	A	402	NAD	O4B-C4B-C5B-O5B
3	A	402	NAD	O4D-C1D-N1N-C2N
3	A	402	NAD	C2D-C1D-N1N-C2N

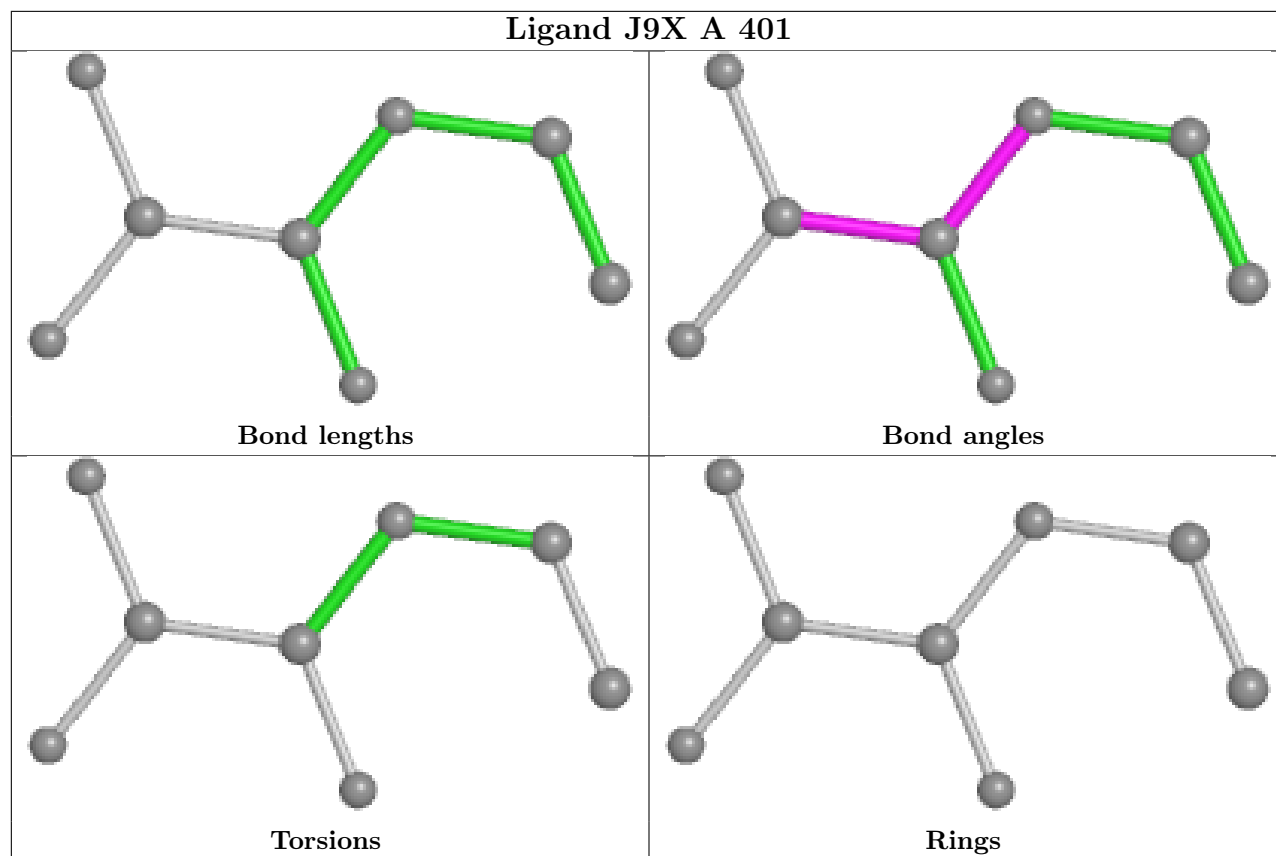
There are no ring outliers.

5 monomers are involved in 6 short contacts:

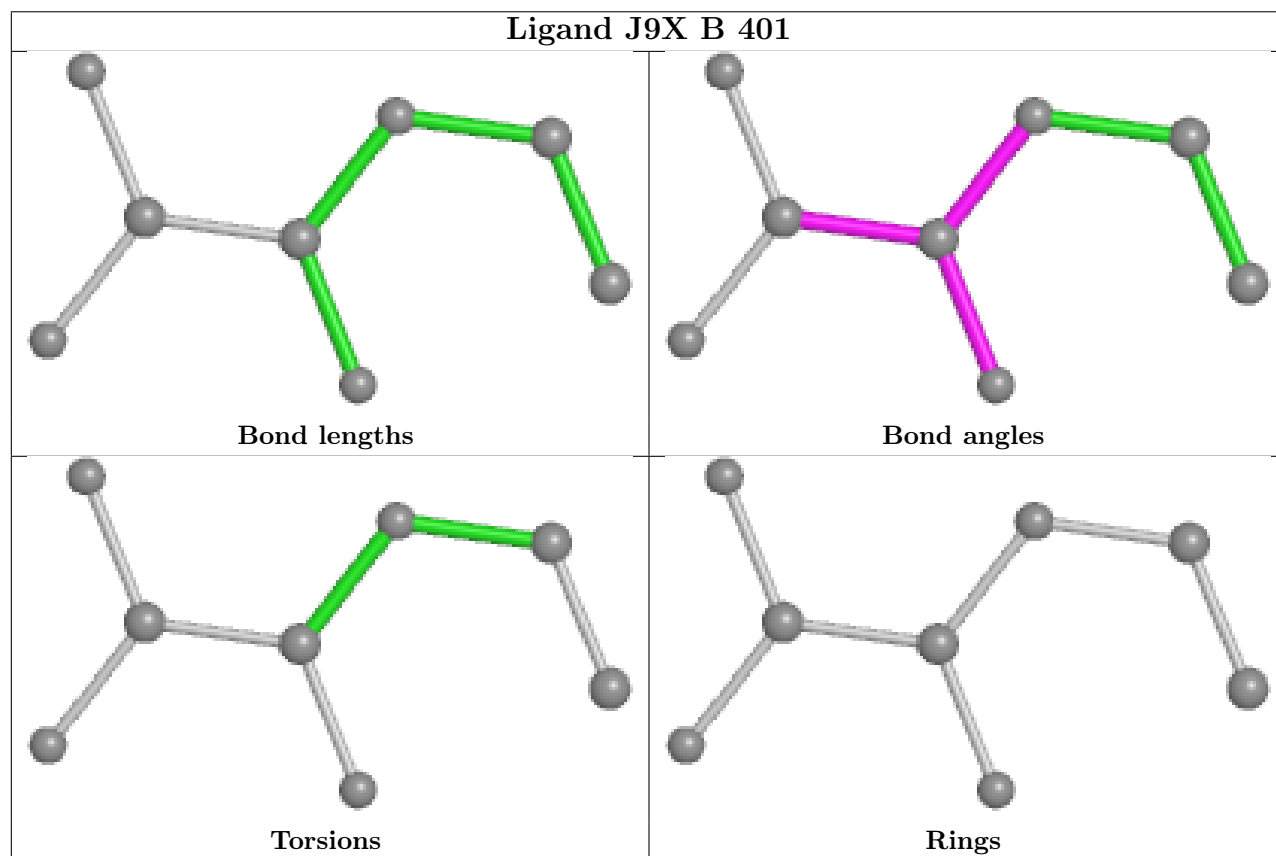
Mol	Chain	Res	Type	Clashes	Symm-Clashes
4	B	405	SO4	1	0
4	B	407	SO4	2	0
3	B	402	NAD	1	0
4	B	406	SO4	1	0
4	A	405	SO4	1	0

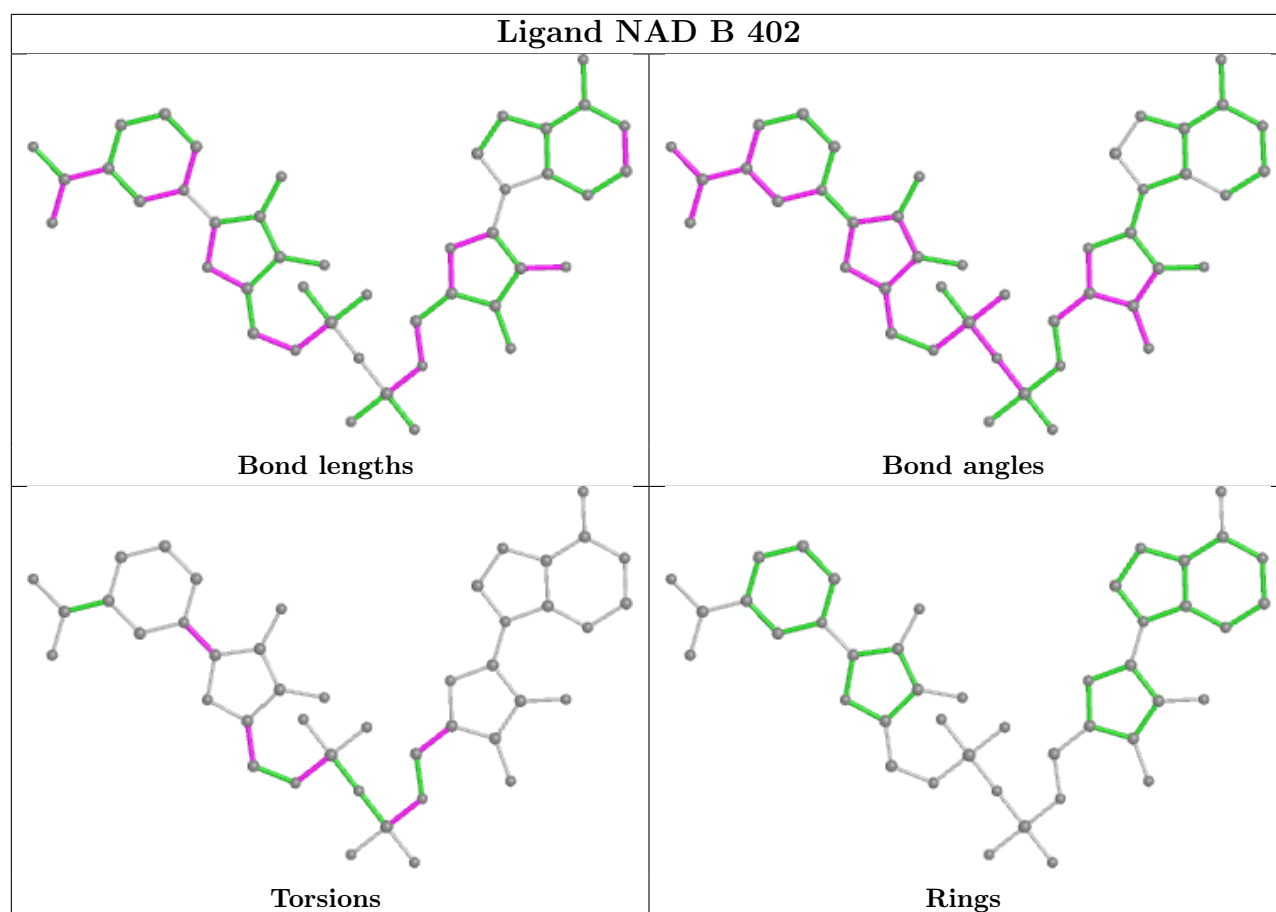
The following is a two-dimensional graphical depiction of Mogul quality analysis of bond lengths, bond angles, torsion angles, and ring geometry for all instances of the Ligand of Interest. In addition, ligands with molecular weight > 250 and outliers as shown on the validation Tables will also be included. For torsion angles, if less than 5% of the Mogul distribution of torsion angles is within 10 degrees of the torsion angle in question, then that torsion angle is considered an outlier. Any bond that is central to one or more torsion angles identified as an outlier by Mogul will be highlighted in the graph. For rings, the root-mean-square deviation (RMSD) between the ring in question and similar rings identified by Mogul is calculated over all ring torsion angles. If the average RMSD is greater than 60 degrees and the minimal RMSD between the ring in question and any Mogul-identified rings is also greater than 60 degrees, then that ring is considered an outlier. The outliers are highlighted in purple. The color gray indicates Mogul did not find sufficient equivalents in the CSD to analyse the geometry.

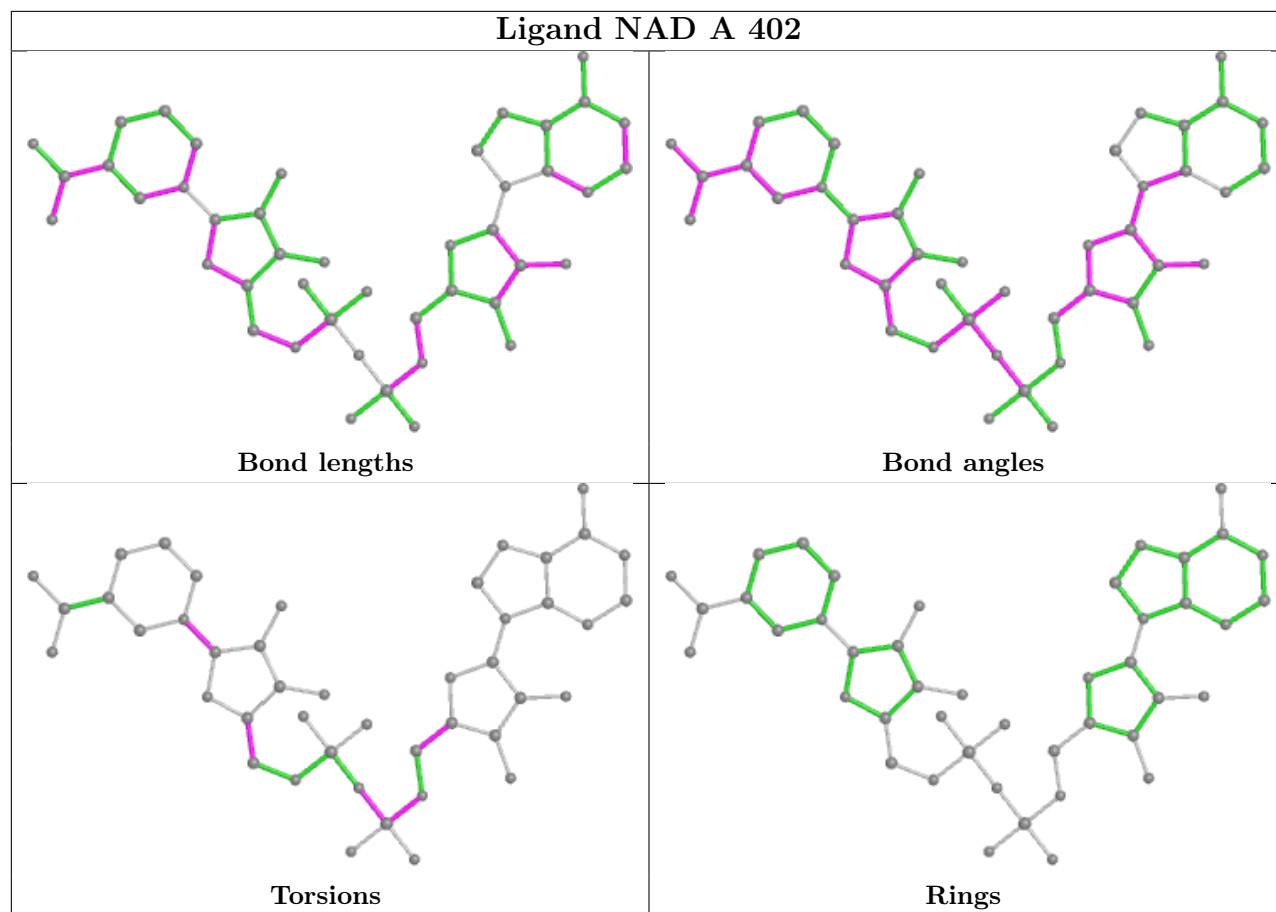
## Ligand J9X A 401



## Ligand J9X B 401







## 5.7 Other polymers [i](#)

There are no such residues in this entry.

## 5.8 Polymer linkage issues [i](#)

There are no chain breaks in this entry.

## 6 Fit of model and data [i](#)

### 6.1 Protein, DNA and RNA chains [i](#)

In the following table, the column labelled ‘#RSRZ> 2’ contains the number (and percentage) of RSRZ outliers, followed by percent RSRZ outliers for the chain as percentile scores relative to all X-ray entries and entries of similar resolution. The OWAB column contains the minimum, median, 95<sup>th</sup> percentile and maximum values of the occupancy-weighted average B-factor per residue. The column labelled ‘Q< 0.9’ lists the number of (and percentage) of residues with an average occupancy less than 0.9.

Mol	Chain	Analysed	<RSRZ>	#RSRZ>2		OWAB(Å <sup>2</sup> )	Q<0.9
1	A	335/341 (98%)	-0.28	5 (1%)	73 46	31, 47, 79, 159	0
1	B	326/341 (95%)	-0.23	3 (0%)	84 63	33, 47, 91, 130	0
All	All	661/682 (96%)	-0.25	8 (1%)	79 54	31, 47, 85, 159	0

The worst 5 of 8 RSRZ outliers are listed below:

Mol	Chain	Res	Type	RSRZ
1	A	2	ALA	3.8
1	A	18	GLU	3.5
1	A	335	GLU	2.8
1	B	107	ARG	2.5
1	B	109	ALA	2.2

### 6.2 Non-standard residues in protein, DNA, RNA chains [i](#)

There are no non-standard protein/DNA/RNA residues in this entry.

### 6.3 Carbohydrates [i](#)

There are no monosaccharides in this entry.

### 6.4 Ligands [i](#)

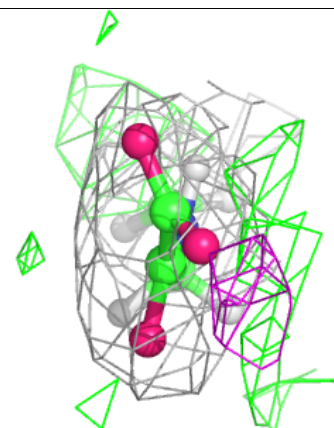
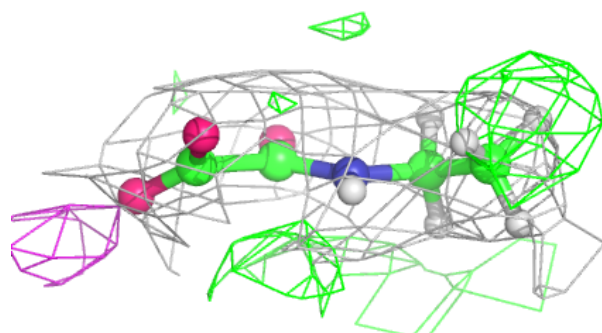
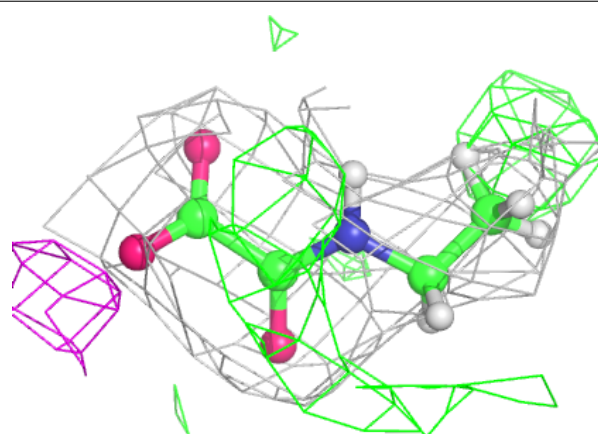
In the following table, the Atoms column lists the number of modelled atoms in the group and the number defined in the chemical component dictionary. The B-factors column lists the minimum, median, 95<sup>th</sup> percentile and maximum values of B factors of atoms in the group. The column labelled ‘Q< 0.9’ lists the number of atoms with occupancy less than 0.9.

Mol	Type	Chain	Res	Atoms	RSCC	RSR	B-factors( $\text{\AA}^2$ )	Q<0.9
4	SO4	A	404	5/5	0.73	0.23	102,109,151,216	0
4	SO4	B	406	5/5	0.75	0.31	127,135,141,215	0
4	SO4	B	408	5/5	0.78	0.34	84,93,108,170	0
4	SO4	A	403	5/5	0.86	0.34	74,79,81,111	0
4	SO4	B	403	5/5	0.86	0.27	81,88,101,112	0
4	SO4	B	407	5/5	0.89	0.20	122,124,131,155	0
2	J9X	B	401	8/8	0.90	0.20	48,58,75,75	0
2	J9X	A	401	8/8	0.92	0.25	39,53,70,70	0
3	NAD	B	402	44/44	0.95	0.18	39,47,59,73	0
3	NAD	A	402	44/44	0.95	0.20	33,45,57,75	0
4	SO4	B	404	5/5	0.95	0.16	69,70,103,109	0
4	SO4	B	405	5/5	0.97	0.21	38,40,43,45	0
4	SO4	A	405	5/5	0.98	0.16	42,42,45,46	0

The following is a graphical depiction of the model fit to experimental electron density of all instances of the Ligand of Interest. In addition, ligands with molecular weight > 250 and outliers as shown on the geometry validation Tables will also be included. Each fit is shown from different orientation to approximate a three-dimensional view.

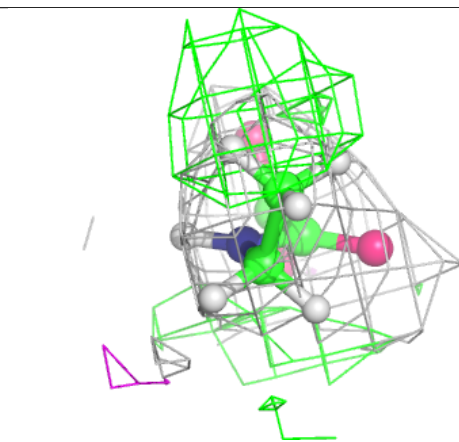
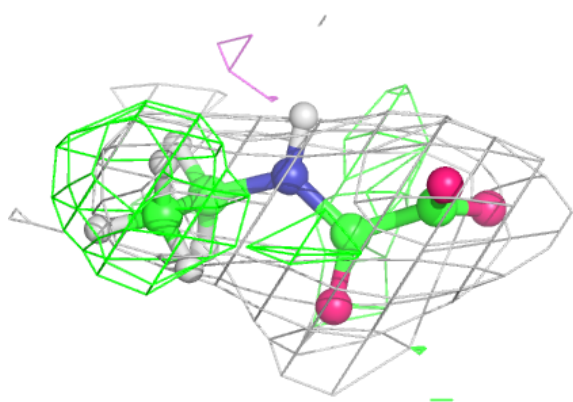
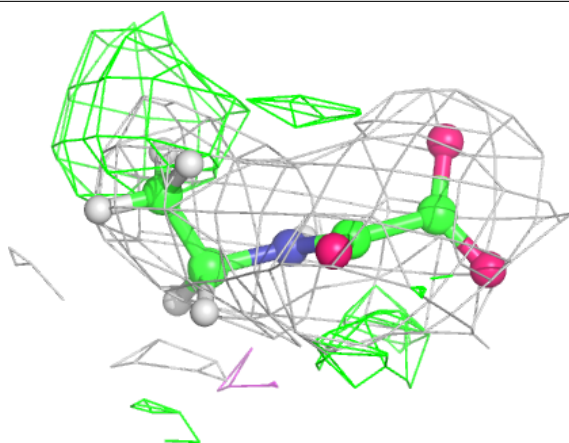
**Electron density around J9X B 401:**

2mF<sub>o</sub>-DF<sub>c</sub> (at 0.7 rmsd) in gray  
mF<sub>o</sub>-DF<sub>c</sub> (at 3 rmsd) in purple (negative)  
and green (positive)

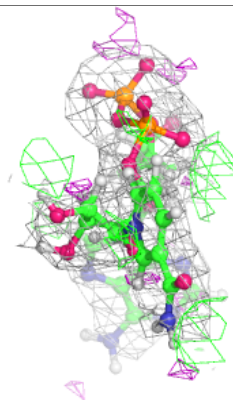
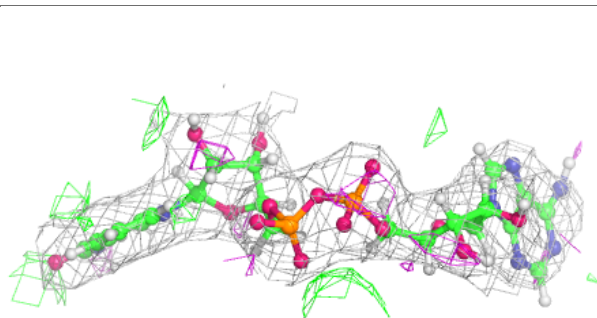
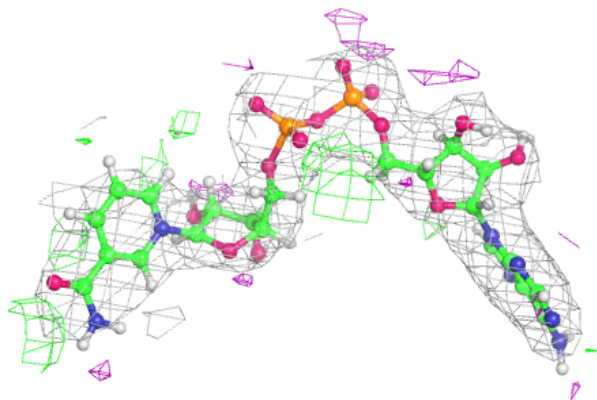


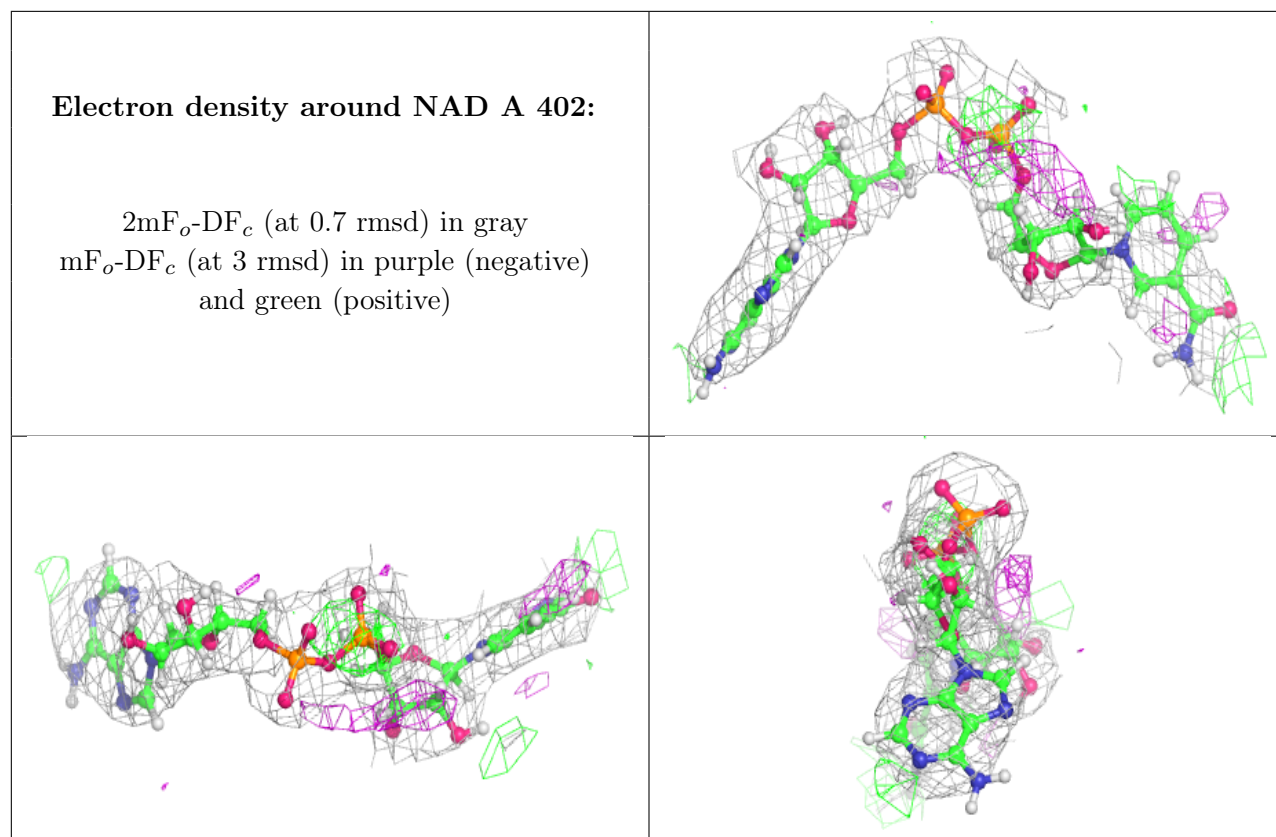
**Electron density around J9X A 401:**

$2mF_o-DF_c$  (at 0.7 rmsd) in gray  
 $mF_o-DF_c$  (at 3 rmsd) in purple (negative)  
and green (positive)

**Electron density around NAD B 402:**

$2mF_o-DF_c$  (at 0.7 rmsd) in gray  
 $mF_o-DF_c$  (at 3 rmsd) in purple (negative)  
and green (positive)





## 6.5 Other polymers [i](#)

There are no such residues in this entry.