



Full wwPDB X-ray Structure Validation Report ⓘ

May 13, 2020 – 05:24 am BST

PDB ID : 4EQF
Title : Trip8b-1a#206-567 interacting with the carboxy-terminal seven residues of HCN2
Authors : Bankston, J.R.; Camp, S.S.; Dimaio, F.; Lewis, A.S.; Chetkovich, D.M.; Zagotta, W.N.
Deposited on : 2012-04-18
Resolution : 3.00 Å(reported)

This is a Full wwPDB X-ray Structure Validation Report for a publicly released PDB entry.

We welcome your comments at validation@mail.wwpdb.org

A user guide is available at

<https://www.wwpdb.org/validation/2017/XrayValidationReportHelp>

with specific help available everywhere you see the ⓘ symbol.

The following versions of software and data (see [references ⓘ](#)) were used in the production of this report:

MolProbity	:	4.02b-467
Xtriage (Phenix)	:	1.13
EDS	:	2.11
Percentile statistics	:	20191225.v01 (using entries in the PDB archive December 25th 2019)
Refmac	:	5.8.0158
CCP4	:	7.0.044 (Gargrove)
Ideal geometry (proteins)	:	Engh & Huber (2001)
Ideal geometry (DNA, RNA)	:	Parkinson et al. (1996)
Validation Pipeline (wwPDB-VP)	:	2.11

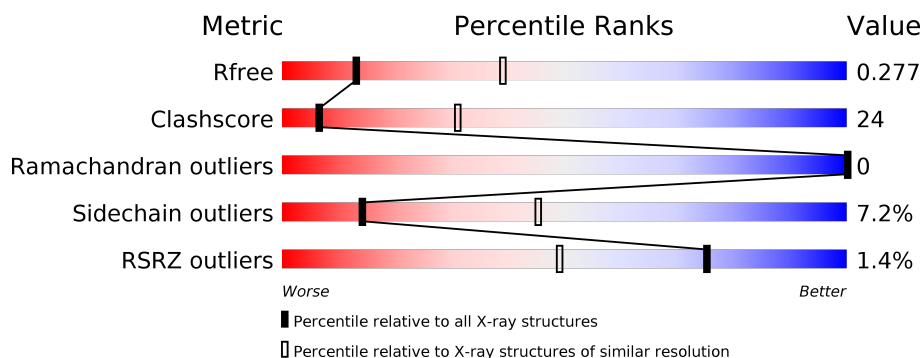
1 Overall quality at a glance

The following experimental techniques were used to determine the structure:

X-RAY DIFFRACTION

The reported resolution of this entry is 3.00 Å.

Percentile scores (ranging between 0-100) for global validation metrics of the entry are shown in the following graphic. The table shows the number of entries on which the scores are based.



Metric	Whole archive (#Entries)	Similar resolution (#Entries, resolution range(Å))
R_{free}	130704	2092 (3.00-3.00)
Clashscore	141614	2416 (3.00-3.00)
Ramachandran outliers	138981	2333 (3.00-3.00)
Sidechain outliers	138945	2336 (3.00-3.00)
RSRZ outliers	127900	1990 (3.00-3.00)

The table below summarises the geometric issues observed across the polymeric chains and their fit to the electron density. The red, orange, yellow and green segments on the lower bar indicate the fraction of residues that contain outliers for ≥ 3 , 2, 1 and 0 types of geometric quality criteria respectively. A grey segment represents the fraction of residues that are not modelled. The numeric value for each fraction is indicated below the corresponding segment, with a dot representing fractions $\leq 5\%$. The upper red bar (where present) indicates the fraction of residues that have poor fit to the electron density. The numeric value is given above the bar.

Mol	Chain	Length	Quality of chain
1	A	365	<div> <div></div> <div> <div></div> <div>42%</div> <div>32%</div> <div>•</div> <div>23%</div> </div> </div>
2	B	7	<div> <div></div> <div> <div></div> <div>57%</div> <div>29%</div> <div>14%</div> </div> </div>

2 Entry composition

There are 2 unique types of molecules in this entry. The entry contains 2260 atoms, of which 0 are hydrogens and 0 are deuteriums.

In the tables below, the ZeroOcc column contains the number of atoms modelled with zero occupancy, the AltConf column contains the number of residues with at least one atom in alternate conformation and the Trace column contains the number of residues modelled with at most 2 atoms.

- Molecule 1 is a protein called PEX5-related protein.

Mol	Chain	Residues	Atoms					ZeroOcc	AltConf	Trace
1	A	281	Total	C	N	O	S	0	0	0
			2212	1404	377	424	7			

There are 3 discrepancies between the modelled and reference sequences:

Chain	Residue	Modelled	Actual	Comment	Reference
A	-45	GLY	-	EXPRESSION TAG	UNP Q8C437
A	-44	ALA	-	EXPRESSION TAG	UNP Q8C437
A	-43	MET	-	EXPRESSION TAG	UNP Q8C437

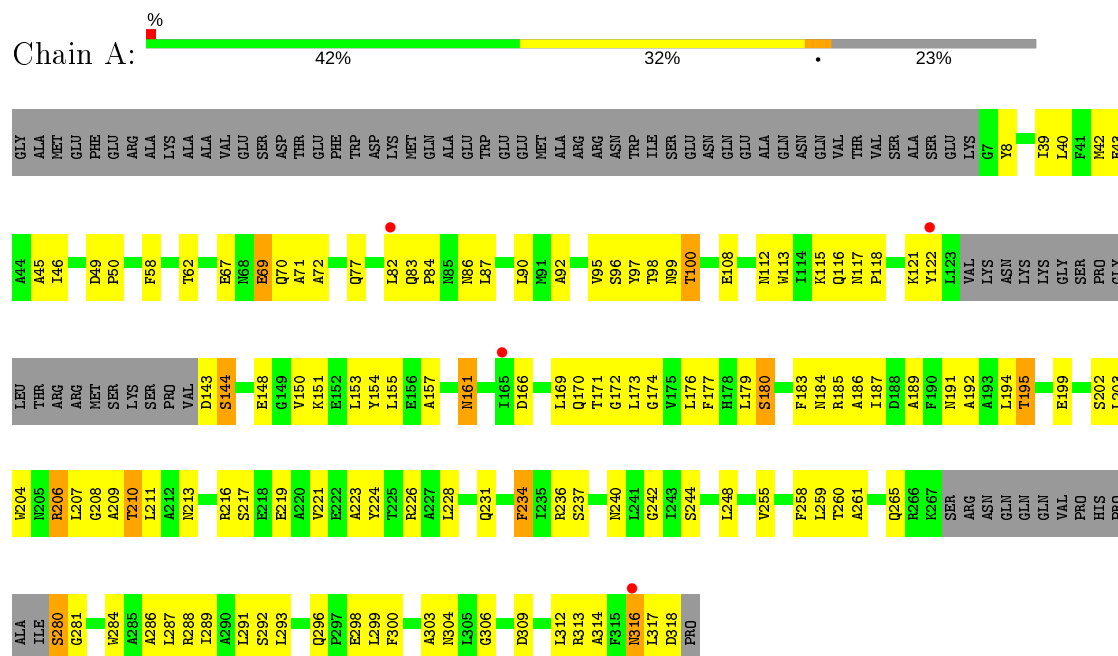
- Molecule 2 is a protein called Potassium/sodium hyperpolarization-activated cyclic nucleotide-gated channel 2.

Mol	Chain	Residues	Atoms				ZeroOcc	AltConf	Trace
2	B	6	Total	C	N	O	0	0	0
			48	28	10	10			

3 Residue-property plots [i](#)

These plots are drawn for all protein, RNA and DNA chains in the entry. The first graphic for a chain summarises the proportions of the various outlier classes displayed in the second graphic. The second graphic shows the sequence view annotated by issues in geometry and electron density. Residues are color-coded according to the number of geometric quality criteria for which they contain at least one outlier: green = 0, yellow = 1, orange = 2 and red = 3 or more. A red dot above a residue indicates a poor fit to the electron density ($RSRZ > 2$). Stretches of 2 or more consecutive residues without any outlier are shown as a green connector. Residues present in the sample, but not in the model, are shown in grey.

- Molecule 1: PEX5-related protein



- Molecule 2: Potassium/sodium hyperpolarization-activated cyclic nucleotide-gated channel 2



4 Data and refinement statistics

Property	Value	Source
Space group	P 41 21 2	Depositor
Cell constants a, b, c, α , β , γ	72.32Å 72.32Å 146.74Å 90.00° 90.00° 90.00°	Depositor
Resolution (Å)	29.81 – 3.00 48.29 – 3.00	Depositor EDS
% Data completeness (in resolution range)	99.6 (29.81-3.00) 91.8 (48.29-3.00)	Depositor EDS
R_{merge}	0.09	Depositor
R_{sym}	(Not available)	Depositor
$\langle I/\sigma(I) \rangle$ ¹	1.94 (at 3.01Å)	Xtriage
Refinement program	PHENIX (phenix.refine: 1.7.1_743)	Depositor
R, R_{free}	0.227 , 0.281 0.226 , 0.277	Depositor DCC
R_{free} test set	386 reflections (4.64%)	wwPDB-VP
Wilson B-factor (Å ²)	91.3	Xtriage
Anisotropy	0.428	Xtriage
Bulk solvent k_{sol} (e/Å ³), B_{sol} (Å ²)	0.36 , 109.0	EDS
L-test for twinning ²	$\langle L \rangle = 0.49$, $\langle L^2 \rangle = 0.32$	Xtriage
Estimated twinning fraction	No twinning to report.	Xtriage
F_o, F_c correlation	0.95	EDS
Total number of atoms	2260	wwPDB-VP
Average B, all atoms (Å ²)	117.0	wwPDB-VP

Xtriage's analysis on translational NCS is as follows: *The largest off-origin peak in the Patterson function is 6.35% of the height of the origin peak. No significant pseudotranslation is detected.*

¹Intensities estimated from amplitudes.

²Theoretical values of $\langle |L| \rangle$, $\langle L^2 \rangle$ for acentric reflections are 0.5, 0.333 respectively for untwinned datasets, and 0.375, 0.2 for perfectly twinned datasets.

5 Model quality ⓘ

5.1 Standard geometry ⓘ

The Z score for a bond length (or angle) is the number of standard deviations the observed value is removed from the expected value. A bond length (or angle) with $|Z| > 5$ is considered an outlier worth inspection. RMSZ is the root-mean-square of all Z scores of the bond lengths (or angles).

Mol	Chain	Bond lengths		Bond angles	
		RMSZ	$\# Z > 5$	RMSZ	$\# Z > 5$
1	A	0.40	0/2255	0.58	0/3058
2	B	0.33	0/47	0.57	0/60
All	All	0.40	0/2302	0.58	0/3118

There are no bond length outliers.

There are no bond angle outliers.

There are no chirality outliers.

There are no planarity outliers.

5.2 Too-close contacts ⓘ

In the following table, the Non-H and H(model) columns list the number of non-hydrogen atoms and hydrogen atoms in the chain respectively. The H(added) column lists the number of hydrogen atoms added and optimized by MolProbity. The Clashes column lists the number of clashes within the asymmetric unit, whereas Symm-Clashes lists symmetry related clashes.

Mol	Chain	Non-H	H(model)	H(added)	Clashes	Symm-Clashes
1	A	2212	0	2155	104	0
2	B	48	0	50	4	0
All	All	2260	0	2205	106	0

The all-atom clashscore is defined as the number of clashes found per 1000 atoms (including hydrogen atoms). The all-atom clashscore for this structure is 24.

All (106) close contacts within the same asymmetric unit are listed below, sorted by their clash magnitude.

Atom-1	Atom-2	Interatomic distance (Å)	Clash overlap (Å)
1:A:183:PHE:O	1:A:187:ILE:HG13	1.64	0.95
1:A:206:ARG:O	1:A:210:THR:OG1	1.85	0.93

Continued on next page...

Continued from previous page...

Atom-1	Atom-2	Interatomic distance (Å)	Clash overlap (Å)
1:A:77:GLN:NE2	1:A:97:TYR:OH	2.08	0.86
1:A:157:ALA:O	1:A:161:ASN:ND2	2.11	0.82
1:A:312:LEU:O	1:A:317:LEU:HB2	1.80	0.81
1:A:216:ARG:HB3	1:A:219:GLU:OE1	1.81	0.81
1:A:143:ASP:N	1:A:144:SER:HA	1.96	0.81
2:B:2:ARG:O	2:B:2:ARG:NH1	2.13	0.80
1:A:42:MET:O	1:A:46:ILE:HD12	1.81	0.79
1:A:90:LEU:HD13	1:A:113:TRP:HA	1.62	0.79
1:A:313:ARG:HD3	1:A:316:ASN:H	1.46	0.78
1:A:90:LEU:HB2	1:A:113:TRP:HD1	1.50	0.77
1:A:313:ARG:HA	1:A:314:ALA:HB3	1.71	0.72
1:A:95:VAL:HG11	1:A:206:ARG:HH12	1.56	0.69
1:A:58:PHE:O	1:A:62:THR:OG1	2.05	0.69
1:A:296:GLN:HB3	1:A:299:LEU:HD12	1.76	0.68
1:A:298:GLU:N	1:A:298:GLU:OE1	2.24	0.67
1:A:189:ALA:O	1:A:192:ALA:HB3	1.95	0.67
1:A:288:ARG:HD3	1:A:304:ASN:HA	1.77	0.67
1:A:209:ALA:HB1	2:B:7:LEU:HD12	1.79	0.65
1:A:148:GLU:HA	1:A:148:GLU:OE1	1.95	0.65
1:A:265:GLN:HE22	1:A:280:SER:HB2	1.61	0.65
1:A:289:ILE:O	1:A:292:SER:OG	2.15	0.65
1:A:86:ASN:O	1:A:90:LEU:HG	1.97	0.64
1:A:284:TRP:CZ3	1:A:306:GLY:HA2	2.35	0.62
1:A:166:ASP:HB3	1:A:169:LEU:HB3	1.81	0.61
1:A:95:VAL:O	1:A:98:THR:HB	1.99	0.61
1:A:108:GLU:O	1:A:112:ASN:ND2	2.33	0.60
1:A:187:ILE:HD13	1:A:211:LEU:HD23	1.82	0.60
1:A:177:PHE:CE1	1:A:185:ARG:HD2	2.39	0.58
1:A:224:TYR:CZ	1:A:240:ASN:HB3	2.39	0.58
1:A:92:ALA:O	1:A:95:VAL:HG13	2.03	0.58
1:A:313:ARG:HG3	1:A:314:ALA:O	2.04	0.58
1:A:116:GLN:O	1:A:118:PRO:HD3	2.05	0.56
1:A:69:GLU:CD	1:A:236:ARG:HH22	2.09	0.56
1:A:121:LYS:HG2	1:A:122:TYR:N	2.21	0.56
1:A:96:SER:O	1:A:100:THR:HG23	2.05	0.55
1:A:194:LEU:HD22	1:A:204:TRP:CE2	2.42	0.55
1:A:87:LEU:HD23	1:A:90:LEU:HD12	1.89	0.54
1:A:313:ARG:HD3	1:A:316:ASN:N	2.20	0.54
1:A:90:LEU:CD1	1:A:113:TRP:HA	2.35	0.54
1:A:284:TRP:HB3	1:A:288:ARG:NH2	2.23	0.53
1:A:148:GLU:OE1	1:A:151:LYS:HD3	2.08	0.53

Continued on next page...

Continued from previous page...

Atom-1	Atom-2	Interatomic distance (Å)	Clash overlap (Å)
1:A:309:ASP:HA	1:A:312:LEU:HG	1.90	0.53
1:A:202:SER:O	1:A:206:ARG:HD2	2.09	0.53
1:A:98:THR:HG23	1:A:179:LEU:HD13	1.89	0.52
1:A:209:ALA:O	1:A:213:ASN:HB2	2.09	0.52
1:A:113:TRP:CH2	1:A:117:ASN:ND2	2.77	0.52
1:A:217:SER:O	1:A:221:VAL:HG23	2.10	0.52
1:A:42:MET:O	1:A:45:ALA:HB3	2.10	0.51
1:A:161:ASN:HD22	1:A:161:ASN:H	1.57	0.51
1:A:209:ALA:CB	2:B:7:LEU:HD12	2.40	0.51
1:A:170:GLN:NE2	1:A:170:GLN:HA	2.26	0.51
1:A:224:TYR:HE2	1:A:244:SER:OG	1.95	0.50
1:A:313:ARG:CD	1:A:316:ASN:H	2.20	0.50
1:A:177:PHE:HB2	1:A:186:ALA:HB2	1.95	0.48
1:A:187:ILE:HG23	1:A:207:LEU:HD11	1.96	0.48
1:A:161:ASN:N	1:A:161:ASN:HD22	2.11	0.48
1:A:208:GLY:HA2	1:A:211:LEU:HD12	1.96	0.48
1:A:317:LEU:O	1:A:318:ASP:HB3	2.14	0.48
1:A:176:LEU:O	1:A:180:SER:HB3	2.13	0.47
1:A:177:PHE:CB	1:A:186:ALA:HB2	2.45	0.47
1:A:258:PHE:CD2	1:A:287:LEU:HA	2.49	0.47
1:A:281:GLY:O	1:A:284:TRP:HB2	2.13	0.47
1:A:83:GLN:O	1:A:83:GLN:HG2	2.15	0.46
1:A:291:LEU:HD23	1:A:291:LEU:HA	1.70	0.46
1:A:207:LEU:HG	1:A:211:LEU:HD11	1.97	0.46
1:A:293:LEU:HD23	1:A:293:LEU:HA	1.78	0.46
1:A:112:ASN:HA	1:A:115:LYS:HB2	1.97	0.46
1:A:150:VAL:O	1:A:153:LEU:HB3	2.16	0.46
1:A:161:ASN:N	1:A:161:ASN:ND2	2.63	0.46
1:A:259:LEU:O	1:A:260:THR:C	2.53	0.45
1:A:291:LEU:HD12	1:A:303:ALA:HB2	1.97	0.45
1:A:191:ASN:O	1:A:195:THR:OG1	2.33	0.45
1:A:174:GLY:HA2	1:A:186:ALA:HA	1.98	0.45
1:A:292:SER:HB3	1:A:300:PHE:CE1	2.51	0.45
1:A:173:LEU:HA	1:A:176:LEU:HD12	1.99	0.45
1:A:203:LEU:HA	1:A:203:LEU:HD23	1.78	0.45
1:A:231:GLN:O	1:A:234:PHE:HB2	2.16	0.44
1:A:242:GLY:HA3	1:A:258:PHE:CE1	2.52	0.44
1:A:70:GLN:HA	1:A:70:GLN:OE1	2.18	0.44
1:A:313:ARG:CA	1:A:314:ALA:HB3	2.44	0.44
1:A:291:LEU:HD13	1:A:300:PHE:HA	2.00	0.44
1:A:258:PHE:O	1:A:261:ALA:HB3	2.18	0.43

Continued on next page...

Continued from previous page...

Atom-1	Atom-2	Interatomic distance (Å)	Clash overlap (Å)
1:A:298:GLU:HG2	1:A:299:LEU:N	2.33	0.43
1:A:166:ASP:HB3	1:A:169:LEU:CB	2.47	0.43
1:A:223:ALA:O	1:A:226:ARG:HB3	2.18	0.43
1:A:8:TYR:HE1	1:A:71:ALA:HB1	1.84	0.43
1:A:173:LEU:HG	1:A:177:PHE:CE2	2.54	0.42
1:A:170:GLN:OE1	1:A:189:ALA:HA	2.18	0.42
1:A:82:LEU:O	1:A:84:PRO:HD3	2.19	0.42
1:A:228:LEU:HD23	1:A:234:PHE:HB3	2.02	0.42
1:A:46:ILE:O	1:A:50:PRO:HA	2.20	0.42
1:A:217:SER:HB2	1:A:248:LEU:HD21	2.00	0.42
2:B:2:ARG:HD2	2:B:2:ARG:HA	1.87	0.41
1:A:40:LEU:HA	1:A:40:LEU:HD23	1.88	0.41
1:A:171:THR:O	1:A:172:GLY:C	2.59	0.41
1:A:171:THR:HG22	1:A:172:GLY:N	2.36	0.41
1:A:314:ALA:CB	1:A:317:LEU:HD12	2.51	0.41
1:A:255:VAL:HG22	1:A:287:LEU:CD1	2.50	0.41
1:A:39:ILE:O	1:A:43:GLU:HG3	2.20	0.41
1:A:258:PHE:CZ	1:A:286:ALA:HB1	2.56	0.41
1:A:71:ALA:O	1:A:72:ALA:C	2.60	0.40
1:A:154:TYR:HB3	1:A:173:LEU:HD13	2.03	0.40
1:A:207:LEU:O	1:A:208:GLY:C	2.60	0.40
1:A:96:SER:HA	1:A:99:ASN:HD22	1.86	0.40

There are no symmetry-related clashes.

5.3 Torsion angles [i](#)

5.3.1 Protein backbone [i](#)

In the following table, the Percentiles column shows the percent Ramachandran outliers of the chain as a percentile score with respect to all X-ray entries followed by that with respect to entries of similar resolution.

The Analysed column shows the number of residues for which the backbone conformation was analysed, and the total number of residues.

Mol	Chain	Analysed	Favoured	Allowed	Outliers	Percentiles	
1	A	275/365 (75%)	257 (94%)	18 (6%)	0	100	100
2	B	4/7 (57%)	4 (100%)	0	0	100	100
All	All	279/372 (75%)	261 (94%)	18 (6%)	0	100	100

There are no Ramachandran outliers to report.

5.3.2 Protein sidechains ⓘ

In the following table, the Percentiles column shows the percent sidechain outliers of the chain as a percentile score with respect to all X-ray entries followed by that with respect to entries of similar resolution.

The Analysed column shows the number of residues for which the sidechain conformation was analysed, and the total number of residues.

Mol	Chain	Analysed	Rotameric	Outliers	Percentiles	
1	A	229/301 (76%)	212 (93%)	17 (7%)	13	44
2	B	6/7 (86%)	6 (100%)	0	100	100
All	All	235/308 (76%)	218 (93%)	17 (7%)	14	45

All (17) residues with a non-rotameric sidechain are listed below:

Mol	Chain	Res	Type
1	A	49	ASP
1	A	67	GLU
1	A	69	GLU
1	A	100	THR
1	A	144	SER
1	A	155	LEU
1	A	161	ASN
1	A	180	SER
1	A	184	ASN
1	A	195	THR
1	A	199	GLU
1	A	206	ARG
1	A	210	THR
1	A	234	PHE
1	A	237	SER
1	A	280	SER
1	A	316	ASN

Some sidechains can be flipped to improve hydrogen bonding and reduce clashes. All (3) such sidechains are listed below:

Mol	Chain	Res	Type
1	A	77	GLN
1	A	161	ASN
1	A	265	GLN

5.3.3 RNA [i](#)

There are no RNA molecules in this entry.

5.4 Non-standard residues in protein, DNA, RNA chains [i](#)

There are no non-standard protein/DNA/RNA residues in this entry.

5.5 Carbohydrates [i](#)

There are no carbohydrates in this entry.

5.6 Ligand geometry [i](#)

There are no ligands in this entry.

5.7 Other polymers [i](#)

There are no such residues in this entry.

5.8 Polymer linkage issues [i](#)

There are no chain breaks in this entry.

6 Fit of model and data [i](#)

6.1 Protein, DNA and RNA chains [i](#)

In the following table, the column labelled ‘#RSRZ> 2’ contains the number (and percentage) of RSRZ outliers, followed by percent RSRZ outliers for the chain as percentile scores relative to all X-ray entries and entries of similar resolution. The OWAB column contains the minimum, median, 95th percentile and maximum values of the occupancy-weighted average B-factor per residue. The column labelled ‘Q< 0.9’ lists the number of (and percentage) of residues with an average occupancy less than 0.9.

Mol	Chain	Analysed	<RSRZ>	#RSRZ>2	OWAB(Å ²)	Q<0.9
1	A	281/365 (76%)	0.21	4 (1%) 75 49	77, 110, 164, 219	0
2	B	6/7 (85%)	0.52	0 100 100	97, 100, 141, 158	0
All	All	287/372 (77%)	0.21	4 (1%) 75 49	77, 110, 164, 219	0

All (4) RSRZ outliers are listed below:

Mol	Chain	Res	Type	RSRZ
1	A	316	ASN	3.9
1	A	122	TYR	3.5
1	A	82	LEU	3.0
1	A	165	ILE	2.0

6.2 Non-standard residues in protein, DNA, RNA chains [i](#)

There are no non-standard protein/DNA/RNA residues in this entry.

6.3 Carbohydrates [i](#)

There are no carbohydrates in this entry.

6.4 Ligands [i](#)

There are no ligands in this entry.

6.5 Other polymers [i](#)

There are no such residues in this entry.