



Full wwPDB X-ray Structure Validation Report ⓘ

Sep 7, 2020 – 02:26 PM BST

PDB ID : 5EQF
Title : Crystal structure of oxidized UDP-galactopyranose mutase from *Corynebacterium diphtheriae* with UDP bound in closed form
Authors : Wangkanont, K.; Kiessling, L.L.; Forest, K.T.
Deposited on : 2015-11-12
Resolution : 2.15 Å(reported)

This is a Full wwPDB X-ray Structure Validation Report for a publicly released PDB entry.

We welcome your comments at validation@mail.wwpdb.org

A user guide is available at

<https://www.wwpdb.org/validation/2017/XrayValidationReportHelp>

with specific help available everywhere you see the ⓘ symbol.

The following versions of software and data (see [references ⓘ](#)) were used in the production of this report:

MolProbity : 4.02b-467
Mogul : 1.8.5 (274361), CSD as541be (2020)
Xtriage (Phenix) : 1.13
EDS : 2.14.2
buster-report : 1.1.7 (2018)
Percentile statistics : 20191225.v01 (using entries in the PDB archive December 25th 2019)
Refmac : 5.8.0158
CCP4 : 7.0.044 (Gargrove)
Ideal geometry (proteins) : Engh & Huber (2001)
Ideal geometry (DNA, RNA) : Parkinson et al. (1996)
Validation Pipeline (wwPDB-VP) : 2.14.2

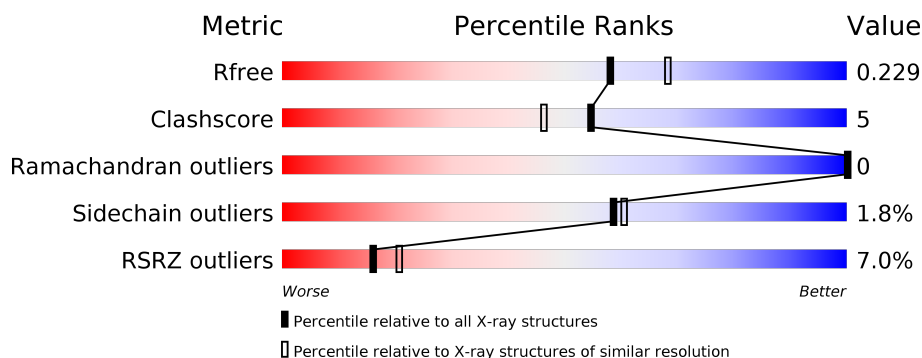
1 Overall quality at a glance

The following experimental techniques were used to determine the structure:

X-RAY DIFFRACTION

The reported resolution of this entry is 2.15 Å.

Percentile scores (ranging between 0-100) for global validation metrics of the entry are shown in the following graphic. The table shows the number of entries on which the scores are based.



Metric	Whole archive (#Entries)	Similar resolution (#Entries, resolution range(Å))
R_{free}	130704	2523 (2.16-2.12)
Clashscore	141614	2653 (2.16-2.12)
Ramachandran outliers	138981	2618 (2.16-2.12)
Sidechain outliers	138945	2617 (2.16-2.12)
RSRZ outliers	127900	2485 (2.16-2.12)

The table below summarises the geometric issues observed across the polymeric chains and their fit to the electron density. The red, orange, yellow and green segments on the lower bar indicate the fraction of residues that contain outliers for ≥ 3 , 2, 1 and 0 types of geometric quality criteria respectively. A grey segment represents the fraction of residues that are not modelled. The numeric value for each fraction is indicated below the corresponding segment, with a dot representing fractions $\leq 5\%$. The upper red bar (where present) indicates the fraction of residues that have poor fit to the electron density. The numeric value is given above the bar.

Mol	Chain	Length	Quality of chain
1	A	390	<div> <div></div> <div>91%</div> <div>7% ..</div> </div>
1	B	390	<div> <div>13%</div> <div>82%</div> <div>16% ..</div> </div>

2 Entry composition [i](#)

There are 5 unique types of molecules in this entry. The entry contains 6758 atoms, of which 0 are hydrogens and 0 are deuteriums.

In the tables below, the ZeroOcc column contains the number of atoms modelled with zero occupancy, the AltConf column contains the number of residues with at least one atom in alternate conformation and the Trace column contains the number of residues modelled with at most 2 atoms.

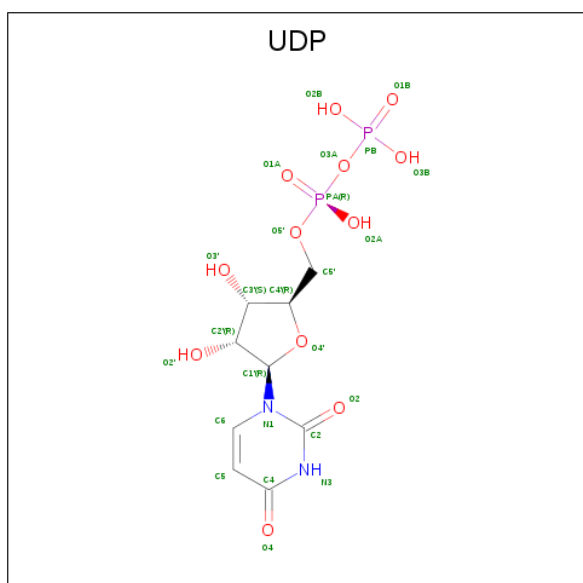
- Molecule 1 is a protein called UDP-galactopyranose mutase.

Mol	Chain	Residues	Atoms					ZeroOcc	AltConf	Trace
1	A	386	Total	C	N	O	S	0	2	0
			3188	2026	544	609	9			
1	B	385	Total	C	N	O	S	0	0	0
			3156	2008	534	605	9			

There are 6 discrepancies between the modelled and reference sequences:

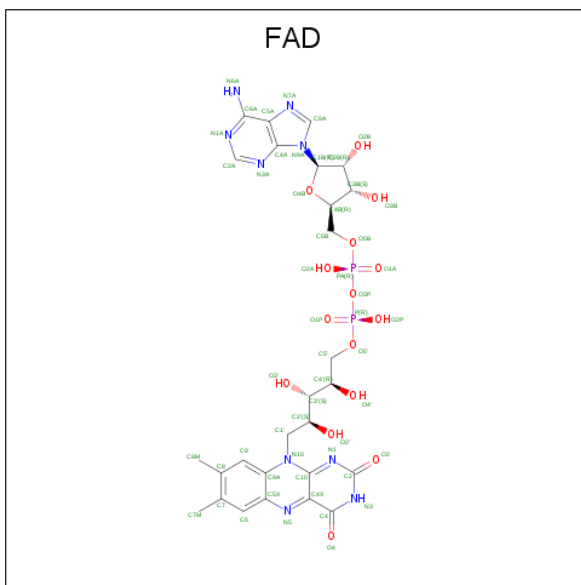
Chain	Residue	Modelled	Actual	Comment	Reference
A	-2	GLY	-	expression tag	UNP Q6NER4
A	-1	SER	-	expression tag	UNP Q6NER4
A	0	GLY	-	expression tag	UNP Q6NER4
B	-2	GLY	-	expression tag	UNP Q6NER4
B	-1	SER	-	expression tag	UNP Q6NER4
B	0	GLY	-	expression tag	UNP Q6NER4

- Molecule 2 is URIDINE-5'-DIPHOSPHATE (three-letter code: UDP) (formula: $C_9H_{14}N_2O_{12}P_2$).



Mol	Chain	Residues	Atoms					ZeroOcc	AltConf
2	A	1	Total 25	C 9	N 2	O 12	P 2	0	0
2	B	1	Total 25	C 9	N 2	O 12	P 2	0	0

- Molecule 3 is FLAVIN-ADENINE DINUCLEOTIDE (three-letter code: FAD) (formula: $\text{C}_{27}\text{H}_{33}\text{N}_9\text{O}_{15}\text{P}_2$).



Mol	Chain	Residues	Atoms					ZeroOcc	AltConf
3	A	1	Total 53	C 27	N 9	O 15	P 2	0	0
3	B	1	Total 53	C 27	N 9	O 15	P 2	0	0

- Molecule 4 is SULFATE ION (three-letter code: SO4) (formula: O₄S).



Mol	Chain	Residues	Atoms			ZeroOcc	AltConf
4	A	1	Total	O	S	0	0
			5	4	1		
4	A	1	Total	O	S	0	0
			5	4	1		
4	A	1	Total	O	S	0	0
			5	4	1		
4	A	1	Total	O	S	0	0
			5	4	1		
4	B	1	Total	O	S	0	0
			5	4	1		
4	B	1	Total	O	S	0	0
			5	4	1		

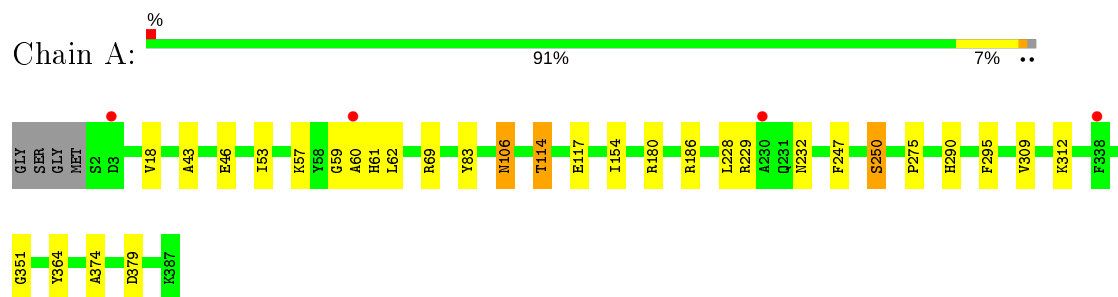
- Molecule 5 is water.

Mol	Chain	Residues	Atoms		ZeroOcc	AltConf
5	A	155	Total	O	0	0
			155	155		
5	B	73	Total	O	0	0
			73	73		

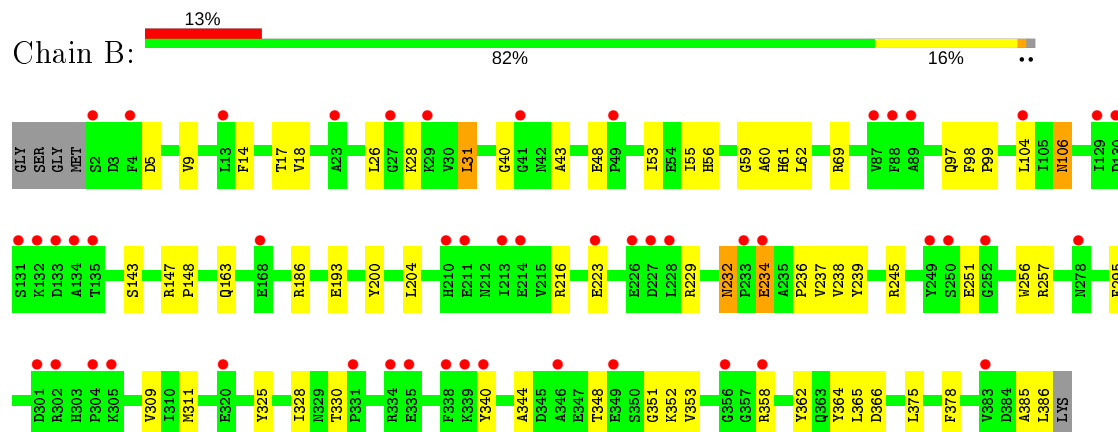
3 Residue-property plots

These plots are drawn for all protein, RNA, DNA and oligosaccharide chains in the entry. The first graphic for a chain summarises the proportions of the various outlier classes displayed in the second graphic. The second graphic shows the sequence view annotated by issues in geometry and electron density. Residues are color-coded according to the number of geometric quality criteria for which they contain at least one outlier: green = 0, yellow = 1, orange = 2 and red = 3 or more. A red dot above a residue indicates a poor fit to the electron density ($RSRZ > 2$). Stretches of 2 or more consecutive residues without any outlier are shown as a green connector. Residues present in the sample, but not in the model, are shown in grey.

- Molecule 1: UDP-galactopyranose mutase



- Molecule 1: UDP-galactopyranose mutase



4 Data and refinement statistics

Property	Value	Source
Space group	C 1 2 1	Depositor
Cell constants a, b, c, α , β , γ	115.56Å 82.69Å 108.57Å 90.00° 112.64° 90.00°	Depositor
Resolution (Å)	28.25 – 2.15 29.11 – 2.15	Depositor EDS
% Data completeness (in resolution range)	92.1 (28.25-2.15) 92.1 (29.11-2.15)	Depositor EDS
R_{merge}	0.06	Depositor
R_{sym}	(Not available)	Depositor
$\langle I/\sigma(I) \rangle$ ¹	0.43 (at 2.14Å)	Xtrriage
Refinement program	PHENIX (phenix.refine: 1.9_1690)	Depositor
R, R_{free}	0.176 , 0.228 0.178 , 0.229	Depositor DCC
R_{free} test set	2516 reflections (5.00%)	wwPDB-VP
Wilson B-factor (Å ²)	41.0	Xtrriage
Anisotropy	0.502	Xtrriage
Bulk solvent k_{sol} (e/Å ³), B_{sol} (Å ²)	0.34 , 50.1	EDS
L-test for twinning ²	$\langle L \rangle = 0.50$, $\langle L^2 \rangle = 0.33$	Xtrriage
Estimated twinning fraction	No twinning to report.	Xtrriage
F_o, F_c correlation	0.96	EDS
Total number of atoms	6758	wwPDB-VP
Average B, all atoms (Å ²)	58.0	wwPDB-VP

Xtrriage's analysis on translational NCS is as follows: *The largest off-origin peak in the Patterson function is 4.25% of the height of the origin peak. No significant pseudotranslation is detected.*

¹Intensities estimated from amplitudes.

²Theoretical values of $\langle |L| \rangle$, $\langle L^2 \rangle$ for acentric reflections are 0.5, 0.333 respectively for untwinned datasets, and 0.375, 0.2 for perfectly twinned datasets.

5 Model quality

5.1 Standard geometry

Bond lengths and bond angles in the following residue types are not validated in this section: UDP, SO4, FAD

The Z score for a bond length (or angle) is the number of standard deviations the observed value is removed from the expected value. A bond length (or angle) with $|Z| > 5$ is considered an outlier worth inspection. RMSZ is the root-mean-square of all Z scores of the bond lengths (or angles).

Mol	Chain	Bond lengths		Bond angles	
		RMSZ	$\# Z > 5$	RMSZ	$\# Z > 5$
1	A	0.46	0/3276	0.61	0/4437
1	B	0.40	0/3244	0.57	0/4398
All	All	0.43	0/6520	0.59	0/8835

There are no bond length outliers.

There are no bond angle outliers.

There are no chirality outliers.

There are no planarity outliers.

5.2 Too-close contacts

In the following table, the Non-H and H(model) columns list the number of non-hydrogen atoms and hydrogen atoms in the chain respectively. The H(added) column lists the number of hydrogen atoms added and optimized by MolProbity. The Clashes column lists the number of clashes within the asymmetric unit, whereas Symm-Clashes lists symmetry related clashes.

Mol	Chain	Non-H	H(model)	H(added)	Clashes	Symm-Clashes
1	A	3188	0	3001	22	0
1	B	3156	0	2964	43	1
2	A	25	0	11	0	0
2	B	25	0	11	0	0
3	A	53	0	30	2	0
3	B	53	0	31	4	0
4	A	20	0	0	1	0
4	B	10	0	0	0	0
5	A	155	0	0	3	0
5	B	73	0	0	3	0
All	All	6758	0	6048	65	1

The all-atom clashscore is defined as the number of clashes found per 1000 atoms (including hydrogen atoms). The all-atom clashscore for this structure is 5.

All (65) close contacts within the same asymmetric unit are listed below, sorted by their clash magnitude.

Atom-1	Atom-2	Interatomic distance (Å)	Clash overlap (Å)
1:B:14:PHE:O	5:B:501:HOH:O	1.88	0.91
1:A:114:THR:HG22	1:A:117:GLU:H	1.33	0.90
1:B:18:VAL:N	5:B:501:HOH:O	2.07	0.76
1:A:228:LEU:O	5:A:501:HOH:O	2.06	0.73
1:A:46:GLU:HG2	1:A:57:LYS:HD2	1.76	0.67
1:A:62:LEU:HD11	1:A:295:PHE:CE1	2.30	0.67
1:B:17:THR:N	5:B:501:HOH:O	2.28	0.66
1:A:59:GLY:HA3	3:A:402:FAD:HM72	1.76	0.66
1:B:229:ARG:HH22	1:B:352:LYS:HB2	1.61	0.66
1:B:69:ARG:HH12	1:B:375:LEU:HB3	1.60	0.65
1:B:59:GLY:O	1:B:61:HIS:ND1	2.28	0.65
1:B:62:LEU:O	3:B:402:FAD:N3	2.30	0.64
1:B:40:GLY:HA3	1:B:204:LEU:HD13	1.80	0.62
1:B:325:TYR:O	1:B:358:ARG:NH1	2.35	0.59
1:A:59:GLY:O	1:A:61:HIS:ND1	2.29	0.57
1:B:147:ARG:HB3	1:B:148:PRO:HD3	1.87	0.57
1:B:237:VAL:HB	1:B:353:VAL:HG22	1.86	0.56
1:B:5:ASP:O	1:B:236:PRO:HD2	2.08	0.54
1:B:186:ARG:NH2	1:B:193:GLU:OE2	2.42	0.54
1:A:61:HIS:O	1:A:62:LEU:HD13	2.08	0.53
1:B:28:LYS:HG3	1:B:386:LEU:HD22	1.91	0.51
1:A:69:ARG:NH2	1:A:379:ASP:OD2	2.43	0.51
1:B:59:GLY:HA3	3:B:402:FAD:HM72	1.93	0.50
1:A:53:ILE:HD12	1:A:309:VAL:HG12	1.94	0.49
1:B:251:GLU:HB2	1:B:340:TYR:CZ	2.47	0.49
1:A:247:PHE:O	1:A:250:SER:OG	2.31	0.49
1:A:180:ARG:NE	4:A:405:SO4:O3	2.45	0.49
1:B:106:ASN:C	1:B:106:ASN:HD22	2.16	0.48
1:B:53:ILE:HD12	1:B:309:VAL:HG12	1.95	0.48
1:B:43:ALA:HA	1:B:61:HIS:CD2	2.48	0.48
1:B:26:LEU:HD13	1:B:378:PHE:HZ	1.78	0.48
1:A:186:ARG:NH1	5:A:513:HOH:O	2.46	0.48
1:B:344:ALA:O	1:B:348:THR:HG23	2.13	0.48
1:A:106:ASN:C	1:A:106:ASN:HD22	2.18	0.47
1:B:48:GLU:HB2	1:B:55:ILE:HD11	1.97	0.47
1:A:61:HIS:C	1:A:62:LEU:HD13	2.36	0.47
1:B:62:LEU:HD11	1:B:295:PHE:CE1	2.50	0.47

Continued on next page...

Continued from previous page...

Atom-1	Atom-2	Interatomic distance (Å)	Clash overlap (Å)
1:B:9:VAL:HB	1:B:239:TYR:HA	1.96	0.46
1:A:229:ARG:NH2	1:A:351:GLY:O	2.41	0.46
1:B:18:VAL:HG11	1:B:238:VAL:HG21	1.98	0.46
1:B:328:ILE:HG22	1:B:330:THR:HG23	1.98	0.46
1:A:83:TYR:OH	1:A:275:PRO:HG2	2.16	0.46
1:B:232:ASN:HA	1:B:232:ASN:HD22	1.62	0.45
1:B:61:HIS:O	1:B:200:TYR:OH	2.20	0.45
1:B:385:ALA:O	1:B:386:LEU:HG	2.17	0.45
1:B:232:ASN:C	1:B:234:GLU:H	2.19	0.45
1:A:60:ALA:HB2	1:A:290:HIS:ND1	2.31	0.45
1:A:46:GLU:CG	1:A:57:LYS:HD2	2.46	0.44
1:A:62:LEU:O	3:A:402:FAD:N3	2.43	0.44
1:B:229:ARG:NH2	1:B:352:LYS:HB2	2.31	0.44
1:B:56:HIS:ND1	1:B:60:ALA:HA	2.33	0.44
1:B:365:LEU:O	3:B:402:FAD:O3'	2.34	0.43
1:A:312:LYS:NZ	5:A:506:HOH:O	2.37	0.43
1:B:69:ARG:NH1	1:B:375:LEU:HB3	2.30	0.43
1:B:311:MET:HB2	1:B:311:MET:HE2	1.84	0.43
1:B:256:TRP:CZ2	1:B:362:TYR:HD1	2.37	0.42
1:B:366:ASP:HA	3:B:402:FAD:H1'2	2.00	0.42
1:B:97:GLN:O	1:B:104:LEU:HB2	2.20	0.42
1:B:98:PHE:CG	1:B:99:PRO:HA	2.55	0.41
1:B:31:LEU:HD11	1:B:216:ARG:HG3	2.03	0.41
1:A:18:VAL:HG13	1:A:374:ALA:HB1	2.03	0.41
1:B:251:GLU:HB2	1:B:340:TYR:CE2	2.55	0.41
1:A:43:ALA:HA	1:A:61:HIS:CD2	2.56	0.41
1:B:229:ARG:NH1	1:B:351:GLY:O	2.50	0.40
1:B:163:GLN:HB2	1:B:257:ARG:NH1	2.37	0.40

All (1) symmetry-related close contacts are listed below. The label for Atom-2 includes the symmetry operator and encoded unit-cell translations to be applied.

Atom-1	Atom-2	Interatomic distance (Å)	Clash overlap (Å)
1:B:223:GLU:OE2	1:B:245:ARG:NH2[2_655]	2.04	0.16

5.3 Torsion angles

5.3.1 Protein backbone

In the following table, the Percentiles column shows the percent Ramachandran outliers of the chain as a percentile score with respect to all X-ray entries followed by that with respect to entries of similar resolution.

The Analysed column shows the number of residues for which the backbone conformation was analysed, and the total number of residues.

Mol	Chain	Analysed	Favoured	Allowed	Outliers	Percentiles	
1	A	386/390 (99%)	381 (99%)	5 (1%)	0	100	100
1	B	383/390 (98%)	377 (98%)	6 (2%)	0	100	100
All	All	769/780 (99%)	758 (99%)	11 (1%)	0	100	100

There are no Ramachandran outliers to report.

5.3.2 Protein sidechains

In the following table, the Percentiles column shows the percent sidechain outliers of the chain as a percentile score with respect to all X-ray entries followed by that with respect to entries of similar resolution.

The Analysed column shows the number of residues for which the sidechain conformation was analysed, and the total number of residues.

Mol	Chain	Analysed	Rotameric	Outliers	Percentiles	
1	A	333/333 (100%)	327 (98%)	6 (2%)	59	60
1	B	330/333 (99%)	324 (98%)	6 (2%)	59	60
All	All	663/666 (100%)	651 (98%)	12 (2%)	59	60

All (12) residues with a non-rotameric sidechain are listed below:

Mol	Chain	Res	Type
1	A	106	ASN
1	A	114	THR
1	A	154	ILE
1	A	232	ASN
1	A	250	SER
1	A	364	TYR
1	B	31	LEU
1	B	106	ASN

Continued on next page...

Continued from previous page...

Mol	Chain	Res	Type
1	B	143	SER
1	B	232	ASN
1	B	234	GLU
1	B	364	TYR

Some sidechains can be flipped to improve hydrogen bonding and reduce clashes. All (1) such sidechains are listed below:

Mol	Chain	Res	Type
1	B	232	ASN

5.3.3 RNA [i](#)

There are no RNA molecules in this entry.

5.4 Non-standard residues in protein, DNA, RNA chains [i](#)

There are no non-standard protein/DNA/RNA residues in this entry.

5.5 Carbohydrates [i](#)

There are no monosaccharides in this entry.

5.6 Ligand geometry [i](#)

10 ligands are modelled in this entry.

In the following table, the Counts columns list the number of bonds (or angles) for which Mogul statistics could be retrieved, the number of bonds (or angles) that are observed in the model and the number of bonds (or angles) that are defined in the Chemical Component Dictionary. The Link column lists molecule types, if any, to which the group is linked. The Z score for a bond length (or angle) is the number of standard deviations the observed value is removed from the expected value. A bond length (or angle) with $|Z| > 2$ is considered an outlier worth inspection. RMSZ is the root-mean-square of all Z scores of the bond lengths (or angles).

Mol	Type	Chain	Res	Link	Bond lengths			Bond angles		
					Counts	RMSZ	$\# Z > 2$	Counts	RMSZ	$\# Z > 2$
4	SO4	B	404	-	4,4,4	0.15	0	6,6,6	0.14	0
2	UDP	B	401	-	20,26,26	2.24	6 (30%)	25,40,40	1.40	3 (12%)
4	SO4	A	405	-	4,4,4	0.13	0	6,6,6	0.28	0

Mol	Type	Chain	Res	Link	Bond lengths			Bond angles		
					Counts	RMSZ	# Z > 2	Counts	RMSZ	# Z > 2
3	FAD	B	402	-	51,58,58	2.85	18 (35%)	60,89,89	1.62	9 (15%)
2	UDP	A	401	-	20,26,26	2.09	5 (25%)	25,40,40	1.46	5 (20%)
4	SO4	A	403	-	4,4,4	0.08	0	6,6,6	0.26	0
4	SO4	B	403	-	4,4,4	0.15	0	6,6,6	0.09	0
4	SO4	A	406	-	4,4,4	0.18	0	6,6,6	0.15	0
3	FAD	A	402	-	51,58,58	2.81	17 (33%)	60,89,89	1.68	10 (16%)
4	SO4	A	404	-	4,4,4	0.12	0	6,6,6	0.16	0

In the following table, the Chirals column lists the number of chiral outliers, the number of chiral centers analysed, the number of these observed in the model and the number defined in the Chemical Component Dictionary. Similar counts are reported in the Torsion and Rings columns. '-' means no outliers of that kind were identified.

Mol	Type	Chain	Res	Link	Chirals	Torsions	Rings
2	UDP	B	401	-	-	0/14/32/32	0/2/2/2
3	FAD	B	402	-	-	10/30/50/50	0/6/6/6
3	FAD	A	402	-	-	3/30/50/50	0/6/6/6
2	UDP	A	401	-	-	0/14/32/32	0/2/2/2

All (46) bond length outliers are listed below:

Mol	Chain	Res	Type	Atoms	Z	Observed(Å)	Ideal(Å)
3	B	402	FAD	C4X-C10	12.60	1.51	1.38
3	A	402	FAD	C4X-C10	12.47	1.51	1.38
3	B	402	FAD	C5X-N5	6.70	1.46	1.35
2	B	401	UDP	PA-O5'	6.15	1.84	1.59
3	A	402	FAD	C2-N1	6.12	1.50	1.38
3	A	402	FAD	C5X-N5	6.07	1.45	1.35
2	A	401	UDP	PA-O5'	5.72	1.82	1.59
3	B	402	FAD	C2-N1	5.67	1.49	1.38
2	B	401	UDP	C4-N3	5.10	1.41	1.33
3	B	402	FAD	C2B-C1B	-5.03	1.46	1.53
3	A	402	FAD	C2B-C1B	-5.00	1.46	1.53
2	A	401	UDP	C4-N3	4.83	1.41	1.33
3	A	402	FAD	C9A-N10	4.56	1.44	1.38
3	B	402	FAD	O4B-C1B	4.17	1.46	1.41
3	B	402	FAD	C2A-N3A	3.74	1.38	1.32
3	B	402	FAD	C2B-C3B	-3.59	1.43	1.53
3	B	402	FAD	C9A-N10	3.57	1.43	1.38
3	B	402	FAD	C2-N3	3.44	1.45	1.38
3	A	402	FAD	C2B-C3B	-3.41	1.44	1.53

Continued on next page...

Continued from previous page...

Mol	Chain	Res	Type	Atoms	Z	Observed(Å)	Ideal(Å)
3	A	402	FAD	O4B-C1B	3.39	1.45	1.41
3	B	402	FAD	C4-N3	3.29	1.38	1.33
3	A	402	FAD	C4-N3	3.28	1.38	1.33
3	A	402	FAD	C2A-N3A	3.26	1.37	1.32
3	A	402	FAD	C2-N3	3.07	1.44	1.38
3	A	402	FAD	O3'-C3'	-3.02	1.35	1.43
3	B	402	FAD	O2'-C2'	-2.97	1.37	1.43
2	A	401	UDP	O5'-C5'	-2.94	1.33	1.44
3	A	402	FAD	C3B-C4B	-2.93	1.45	1.53
2	B	401	UDP	O5'-C5'	-2.91	1.33	1.44
2	B	401	UDP	C6-N1	2.80	1.39	1.35
3	B	402	FAD	C6A-N6A	2.80	1.44	1.34
3	A	402	FAD	C6A-N6A	2.78	1.44	1.34
3	B	402	FAD	C3B-C4B	-2.69	1.46	1.53
3	A	402	FAD	O2'-C2'	-2.62	1.37	1.43
3	B	402	FAD	O3'-C3'	-2.52	1.37	1.43
3	B	402	FAD	C4-C4X	2.46	1.45	1.41
3	A	402	FAD	O4'-C4'	-2.26	1.38	1.43
3	A	402	FAD	C4A-N3A	-2.26	1.32	1.35
2	B	401	UDP	C5'-C4'	2.21	1.58	1.51
3	A	402	FAD	C5'-C4'	-2.21	1.48	1.51
2	B	401	UDP	C2'-C1'	2.13	1.57	1.53
3	B	402	FAD	O4'-C4'	-2.13	1.38	1.43
2	A	401	UDP	C6-N1	2.10	1.38	1.35
3	B	402	FAD	C5'-C4'	-2.06	1.48	1.51
3	B	402	FAD	C4A-N3A	-2.05	1.32	1.35
2	A	401	UDP	C5'-C4'	2.04	1.58	1.51

All (27) bond angle outliers are listed below:

Mol	Chain	Res	Type	Atoms	Z	Observed(°)	Ideal(°)
3	B	402	FAD	C4-N3-C2	6.54	120.66	115.14
3	A	402	FAD	C4-N3-C2	5.97	120.18	115.14
3	A	402	FAD	N3A-C2A-N1A	-5.46	120.14	128.68
3	B	402	FAD	N3A-C2A-N1A	-5.35	120.31	128.68
3	A	402	FAD	C4X-C10-N10	-4.36	115.82	120.30
2	B	401	UDP	C5-C4-N3	-3.88	114.78	123.31
2	A	401	UDP	C5-C4-N3	-3.84	114.87	123.31
3	B	402	FAD	C5'-C4'-C3'	-3.82	104.82	112.20
3	B	402	FAD	C4X-C10-N10	-3.16	117.05	120.30
2	B	401	UDP	O5'-PA-O1A	-3.13	96.83	109.07
3	A	402	FAD	O4B-C1B-C2B	-2.90	102.68	106.93

Continued on next page...

Continued from previous page...

Mol	Chain	Res	Type	Atoms	Z	Observed(°)	Ideal(°)
3	A	402	FAD	C4X-N5-C5X	2.83	119.59	116.77
3	B	402	FAD	C4X-N5-C5X	2.82	119.59	116.77
3	B	402	FAD	C3B-C2B-C1B	2.80	105.20	100.98
2	A	401	UDP	O5'-PA-O1A	-2.76	98.27	109.07
3	A	402	FAD	C5'-C4'-C3'	-2.53	107.32	112.20
3	A	402	FAD	C4X-C4-N3	-2.46	120.07	123.43
3	B	402	FAD	C4X-C4-N3	-2.43	120.11	123.43
3	A	402	FAD	C6-C5X-C9A	2.40	122.19	119.05
2	A	401	UDP	O3B-PB-O2B	2.35	116.62	107.64
2	B	401	UDP	O2A-PA-O5'	-2.33	96.93	107.75
2	A	401	UDP	PA-O3A-PB	-2.32	124.85	132.83
2	A	401	UDP	O2A-PA-O5'	-2.32	96.98	107.75
3	B	402	FAD	C4A-C5A-N7A	-2.27	107.03	109.40
3	A	402	FAD	C4A-C5A-N7A	-2.21	107.10	109.40
3	B	402	FAD	C2B-C3B-C4B	2.19	106.89	102.64
3	A	402	FAD	C10-C4X-N5	2.13	122.73	121.26

There are no chirality outliers.

All (13) torsion outliers are listed below:

Mol	Chain	Res	Type	Atoms
3	B	402	FAD	C5B-O5B-PA-O2A
3	B	402	FAD	P-O3P-PA-O5B
3	B	402	FAD	O4B-C4B-C5B-O5B
3	B	402	FAD	C3B-C4B-C5B-O5B
3	B	402	FAD	C1'-C2'-C3'-C4'
3	A	402	FAD	O4B-C4B-C5B-O5B
3	A	402	FAD	C3B-C4B-C5B-O5B
3	B	402	FAD	O2'-C2'-C3'-O3'
3	B	402	FAD	O2'-C2'-C3'-C4'
3	B	402	FAD	C5B-O5B-PA-O1A
3	A	402	FAD	C5B-O5B-PA-O1A
3	B	402	FAD	C1'-C2'-C3'-O3'
3	B	402	FAD	C5B-O5B-PA-O3P

There are no ring outliers.

3 monomers are involved in 7 short contacts:

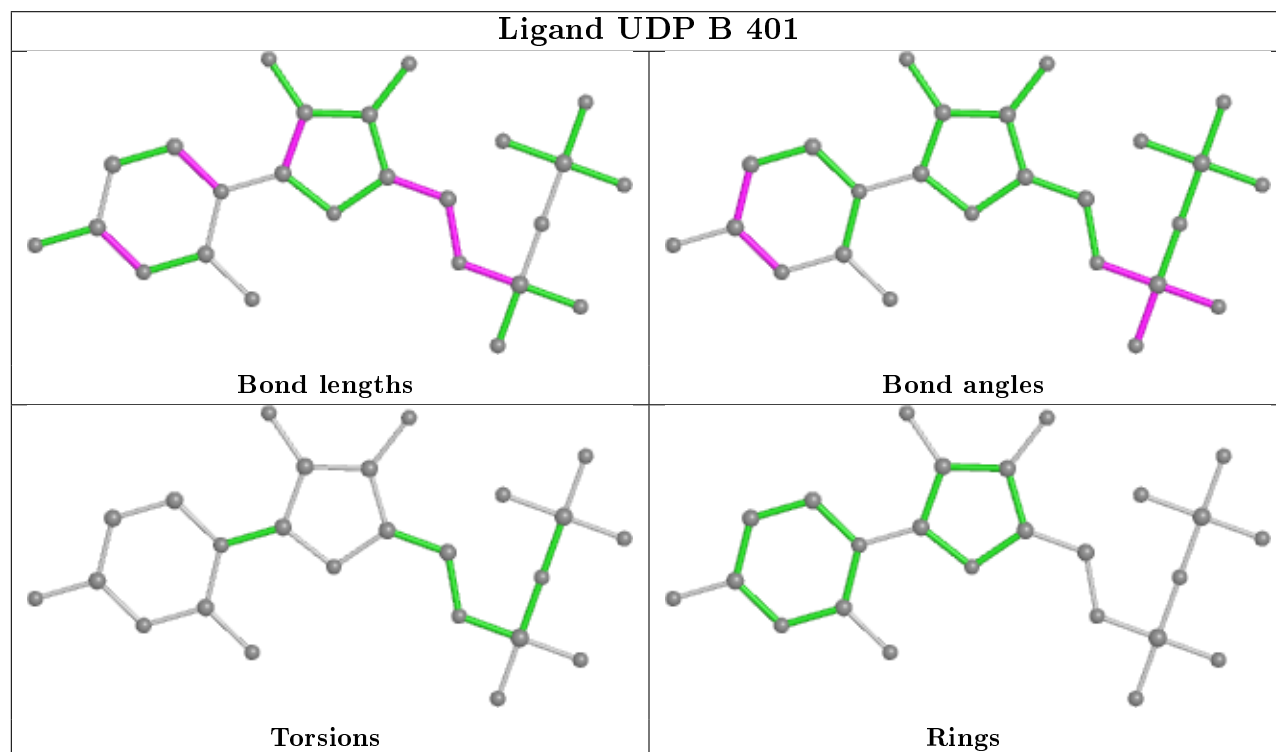
Mol	Chain	Res	Type	Clashes	Symm-Clashes
4	A	405	SO4	1	0
3	B	402	FAD	4	0

Continued on next page...

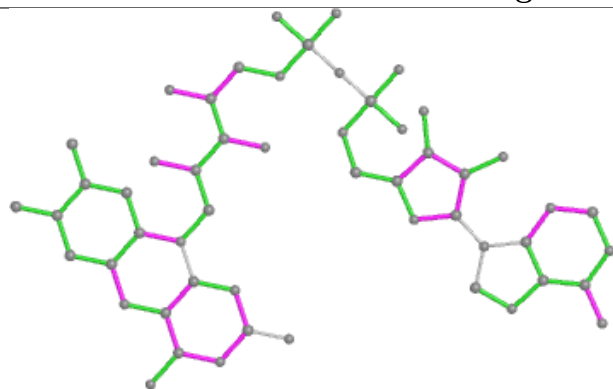
Continued from previous page...

Mol	Chain	Res	Type	Clashes	Symm-Clashes
3	A	402	FAD	2	0

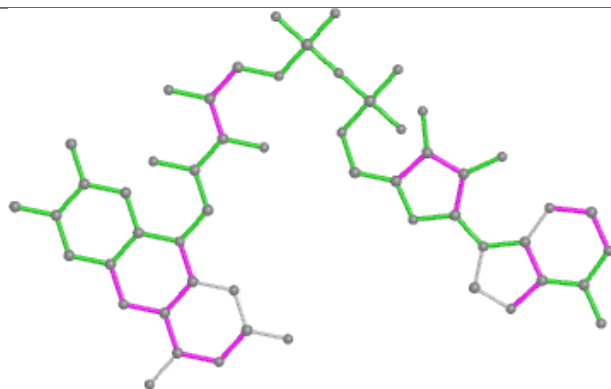
The following is a two-dimensional graphical depiction of Mogul quality analysis of bond lengths, bond angles, torsion angles, and ring geometry for all instances of the Ligand of Interest. In addition, ligands with molecular weight > 250 and outliers as shown on the validation Tables will also be included. For torsion angles, if less than 5% of the Mogul distribution of torsion angles is within 10 degrees of the torsion angle in question, then that torsion angle is considered an outlier. Any bond that is central to one or more torsion angles identified as an outlier by Mogul will be highlighted in the graph. For rings, the root-mean-square deviation (RMSD) between the ring in question and similar rings identified by Mogul is calculated over all ring torsion angles. If the average RMSD is greater than 60 degrees and the minimal RMSD between the ring in question and any Mogul-identified rings is also greater than 60 degrees, then that ring is considered an outlier. The outliers are highlighted in purple. The color gray indicates Mogul did not find sufficient equivalents in the CSD to analyse the geometry.



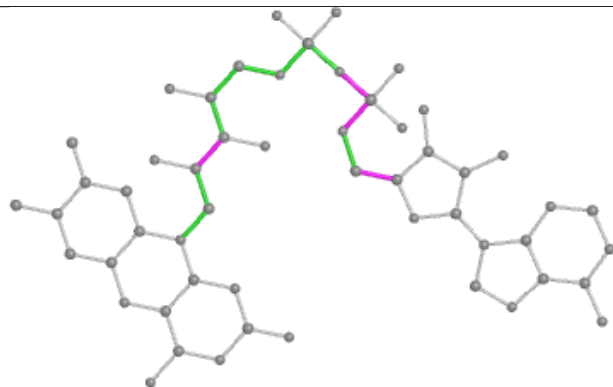
Ligand FAD B 402



Bond lengths



Bond angles

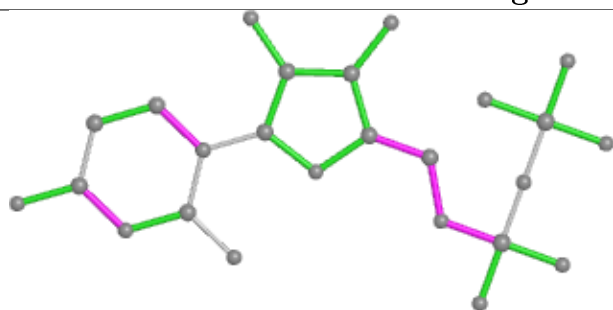


Torsions

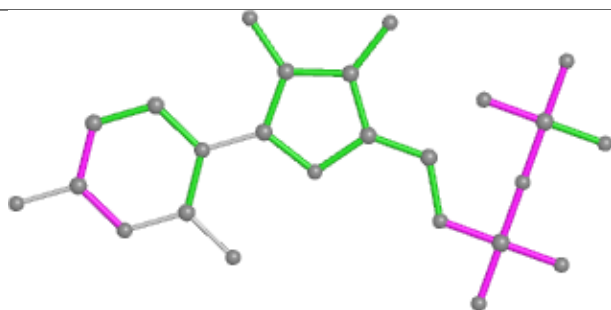


Rings

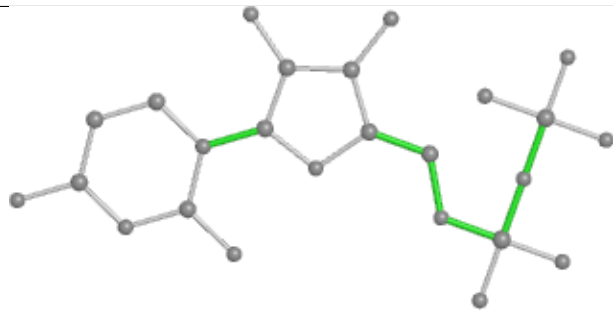
Ligand UDP A 401



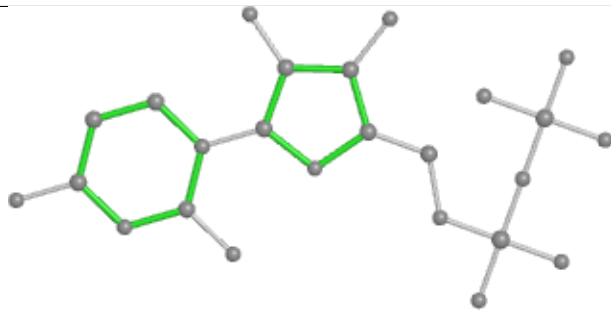
Bond lengths



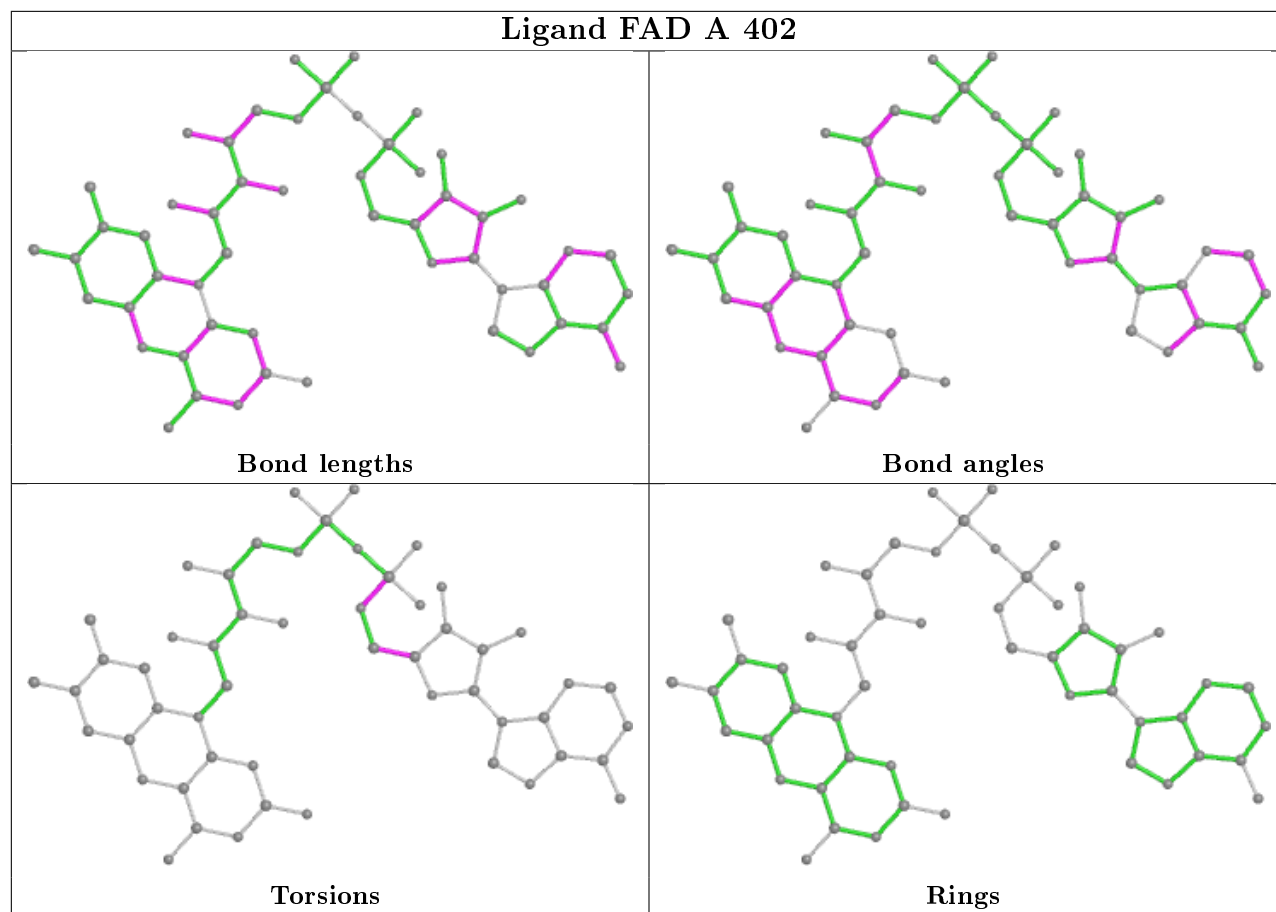
Bond angles



Torsions



Rings



5.7 Other polymers [i](#)

There are no such residues in this entry.

5.8 Polymer linkage issues [i](#)

There are no chain breaks in this entry.

6 Fit of model and data ⓘ

6.1 Protein, DNA and RNA chains ⓘ

In the following table, the column labelled ‘#RSRZ> 2’ contains the number (and percentage) of RSRZ outliers, followed by percent RSRZ outliers for the chain as percentile scores relative to all X-ray entries and entries of similar resolution. The OWAB column contains the minimum, median, 95th percentile and maximum values of the occupancy-weighted average B-factor per residue. The column labelled ‘Q< 0.9’ lists the number of (and percentage) of residues with an average occupancy less than 0.9.

Mol	Chain	Analysed	<RSRZ>	#RSRZ>2	OWAB(Å ²)	Q<0.9
1	A	386/390 (98%)	-0.14	4 (1%) 82 86	30, 45, 68, 113	0
1	B	385/390 (98%)	0.65	50 (12%) 3 4	36, 66, 111, 137	0
All	All	771/780 (98%)	0.25	54 (7%) 16 21	30, 52, 99, 137	0

All (54) RSRZ outliers are listed below:

Mol	Chain	Res	Type	RSRZ
1	B	134	ALA	5.9
1	B	338	PHE	5.7
1	B	129	ILE	4.6
1	B	130	ASP	4.3
1	B	234	GLU	3.9
1	B	331	PRO	3.9
1	B	133	ASP	3.7
1	B	131	SER	3.6
1	B	304	PRO	3.6
1	B	211	GLU	3.4
1	B	228	LEU	3.4
1	B	383	VAL	3.4
1	B	4	PHE	3.4
1	B	27	GLY	3.4
1	B	349	GLU	3.2
1	B	223	GLU	3.2
1	B	89	ALA	3.2
1	A	3	ASP	3.0
1	B	210	HIS	3.0
1	B	227	ASP	3.0
1	A	60	ALA	3.0
1	B	29	LYS	2.9
1	A	338	PHE	2.9
1	B	346	ALA	2.9

Continued on next page...

Continued from previous page...

Mol	Chain	Res	Type	RSRZ
1	B	132	LYS	2.9
1	B	335	GLU	2.7
1	B	135	THR	2.7
1	B	358	ARG	2.7
1	B	213	ILE	2.6
1	B	226	GLU	2.6
1	B	356	GLY	2.6
1	B	168	GLU	2.6
1	B	340	TYR	2.5
1	B	214	GLU	2.5
1	B	339	LYS	2.4
1	B	88	PHE	2.3
1	B	249	TYR	2.3
1	B	252	GLY	2.3
1	B	2	SER	2.3
1	B	41	GLY	2.3
1	B	13	LEU	2.3
1	B	320	GLU	2.2
1	B	23	ALA	2.2
1	B	302	ARG	2.2
1	B	233	PRO	2.2
1	A	230	ALA	2.2
1	B	305	LYS	2.2
1	B	87	VAL	2.1
1	B	301	ASP	2.1
1	B	104	LEU	2.1
1	B	334	ARG	2.1
1	B	278	ASN	2.0
1	B	250	SER	2.0
1	B	49	PRO	2.0

6.2 Non-standard residues in protein, DNA, RNA chains ⓘ

There are no non-standard protein/DNA/RNA residues in this entry.

6.3 Carbohydrates ⓘ

There are no monosaccharides in this entry.

6.4 Ligands ⓘ

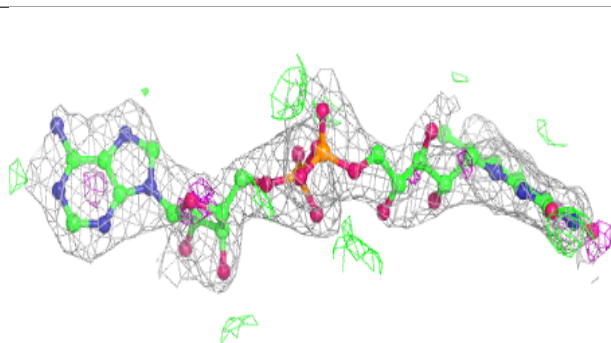
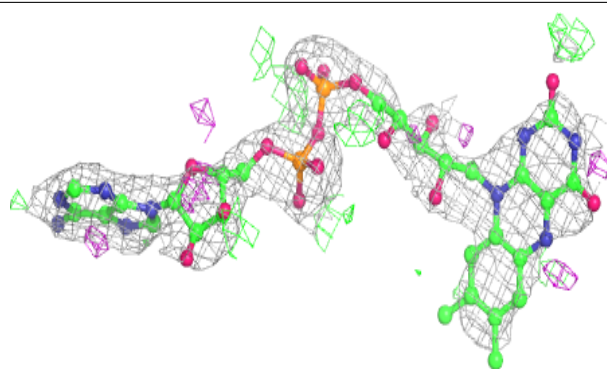
In the following table, the Atoms column lists the number of modelled atoms in the group and the number defined in the chemical component dictionary. The B-factors column lists the minimum, median, 95th percentile and maximum values of B factors of atoms in the group. The column labelled 'Q< 0.9' lists the number of atoms with occupancy less than 0.9.

Mol	Type	Chain	Res	Atoms	RSCC	RSR	B-factors(Å ²)	Q<0.9
4	SO4	A	406	5/5	0.77	0.27	94,99,102,103	5
4	SO4	B	403	5/5	0.86	0.15	68,68,72,72	5
4	SO4	A	405	5/5	0.89	0.18	61,63,67,77	5
4	SO4	B	404	5/5	0.92	0.13	90,92,94,94	5
3	FAD	B	402	53/53	0.92	0.17	54,87,97,126	0
3	FAD	A	402	53/53	0.95	0.14	37,49,69,77	0
4	SO4	A	404	5/5	0.96	0.10	89,93,95,98	0
2	UDP	A	401	25/25	0.98	0.12	31,37,41,47	0
4	SO4	A	403	5/5	0.98	0.12	45,50,54,62	5
2	UDP	B	401	25/25	0.98	0.10	44,54,64,66	0

The following is a graphical depiction of the model fit to experimental electron density of all instances of the Ligand of Interest. In addition, ligands with molecular weight > 250 and outliers as shown on the geometry validation Tables will also be included. Each fit is shown from different orientation to approximate a three-dimensional view.

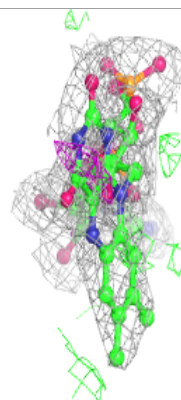
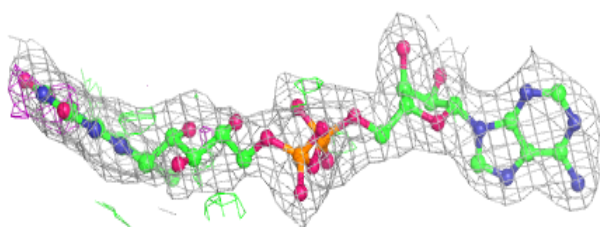
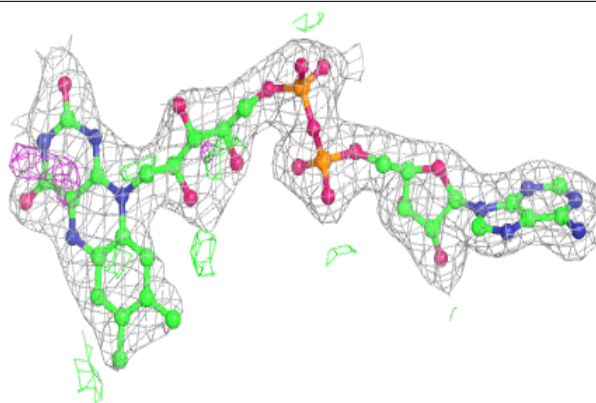
Electron density around FAD B 402:

2mF_o-DF_c (at 0.7 rmsd) in gray
mF_o-DF_c (at 3 rmsd) in purple (negative)
and green (positive)

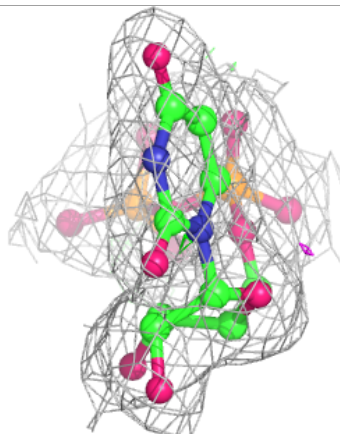
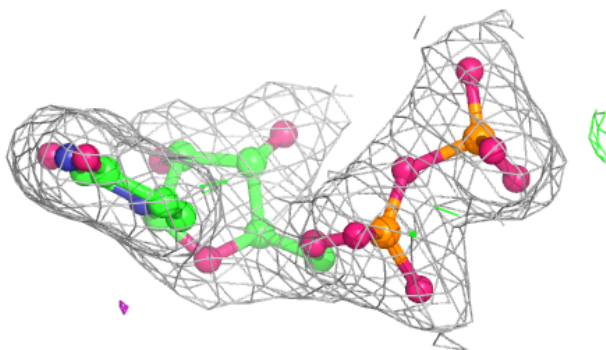
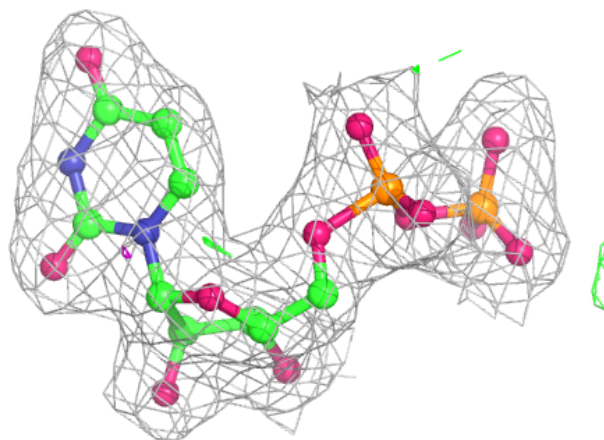


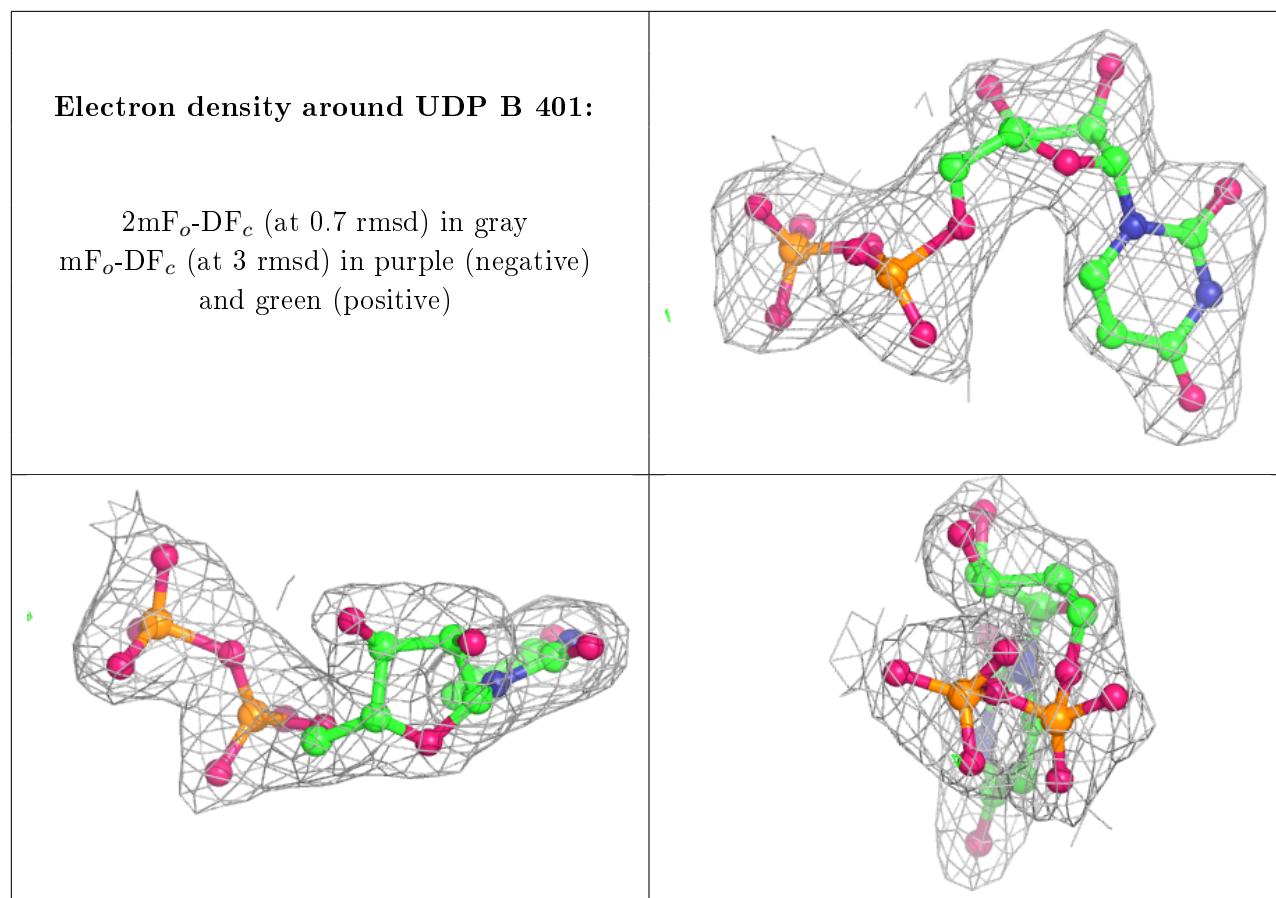
Electron density around FAD A 402:

$2mF_o-DF_c$ (at 0.7 rmsd) in gray
 mF_o-DF_c (at 3 rmsd) in purple (negative)
and green (positive)

**Electron density around UDP A 401:**

$2mF_o-DF_c$ (at 0.7 rmsd) in gray
 mF_o-DF_c (at 3 rmsd) in purple (negative)
and green (positive)





6.5 Other polymers ⓘ

There are no such residues in this entry.