



Full wwPDB X-ray Structure Validation Report ⓘ

Aug 9, 2020 – 02:35 PM BST

PDB ID : 6EUL
Title : Butyrylcholinesterase expressed in CHO cells co-crystallised with a rivastigmine analogue
Authors : Brazzolotto, X.; De la Mora, E.; Dighe, S.; Ross, B.
Deposited on : 2017-10-30
Resolution : 2.60 Å(reported)

This is a Full wwPDB X-ray Structure Validation Report for a publicly released PDB entry.

We welcome your comments at validation@mail.wwpdb.org

A user guide is available at

<https://www.wwpdb.org/validation/2017/XrayValidationReportHelp>

with specific help available everywhere you see the ⓘ symbol.

The following versions of software and data (see [references ⓘ](#)) were used in the production of this report:

MolProbity : 4.02b-467
Mogul : 1.8.5 (274361), CSD as541be (2020)
Xtriage (Phenix) : 1.13
EDS : 2.13.1
buster-report : 1.1.7 (2018)
Percentile statistics : 20191225.v01 (using entries in the PDB archive December 25th 2019)
Refmac : 5.8.0158
CCP4 : 7.0.044 (Gargrove)
Ideal geometry (proteins) : Engh & Huber (2001)
Ideal geometry (DNA, RNA) : Parkinson et al. (1996)
Validation Pipeline (wwPDB-VP) : 2.13.1

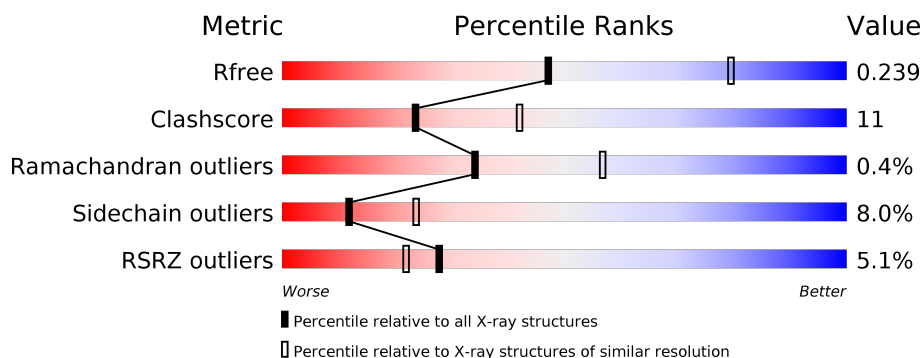
1 Overall quality at a glance

The following experimental techniques were used to determine the structure:

X-RAY DIFFRACTION

The reported resolution of this entry is 2.60 Å.

Percentile scores (ranging between 0-100) for global validation metrics of the entry are shown in the following graphic. The table shows the number of entries on which the scores are based.



Metric	Whole archive (#Entries)	Similar resolution (#Entries, resolution range(Å))
R_{free}	130704	3163 (2.60-2.60)
Clashscore	141614	3518 (2.60-2.60)
Ramachandran outliers	138981	3455 (2.60-2.60)
Sidechain outliers	138945	3455 (2.60-2.60)
RSRZ outliers	127900	3104 (2.60-2.60)

The table below summarises the geometric issues observed across the polymeric chains and their fit to the electron density. The red, orange, yellow and green segments on the lower bar indicate the fraction of residues that contain outliers for ≥ 3 , 2, 1 and 0 types of geometric quality criteria respectively. A grey segment represents the fraction of residues that are not modelled. The numeric value for each fraction is indicated below the corresponding segment, with a dot representing fractions $\leq 5\%$. The upper red bar (where present) indicates the fraction of residues that have poor fit to the electron density. The numeric value is given above the bar.

Mol	Chain	Length	Quality of chain
1	A	528	<div> <div>5%</div> <div>78%</div> <div>20%</div> <div>.</div> </div>

2 Entry composition [i](#)

There are 5 unique types of molecules in this entry. The entry contains 4312 atoms, of which 0 are hydrogens and 0 are deuteriums.

In the tables below, the ZeroOcc column contains the number of atoms modelled with zero occupancy, the AltConf column contains the number of residues with at least one atom in alternate conformation and the Trace column contains the number of residues modelled with at most 2 atoms.

- Molecule 1 is a protein called Cholinesterase.

Mol	Chain	Residues	Atoms					ZeroOcc	AltConf	Trace
			Total	C	N	O	S			
1	A	528	4215	2717	709	774	15	0	3	1

There are 2 discrepancies between the modelled and reference sequences:

Chain	Residue	Modelled	Actual	Comment	Reference
A	198	BXT	SER	engineered mutation	UNP P06276
A	484	GLU	GLN	conflict	UNP P06276

- Molecule 2 is 2-acetamido-2-deoxy-beta-D-glucopyranose (three-letter code: NAG) (formula: $C_8H_{15}NO_6$).



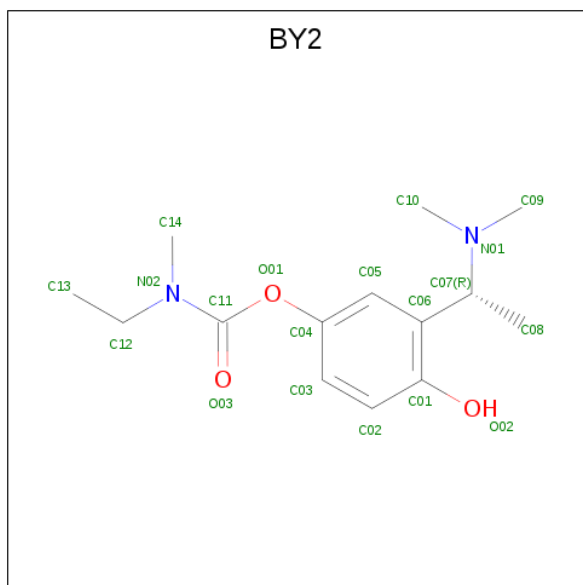
Mol	Chain	Residues	Atoms				ZeroOcc	AltConf
			Total	C	N	O		
2	A	1	14	8	1	5	0	0
2	A	1	14	8	1	5	0	0

Continued on next page...

Continued from previous page...

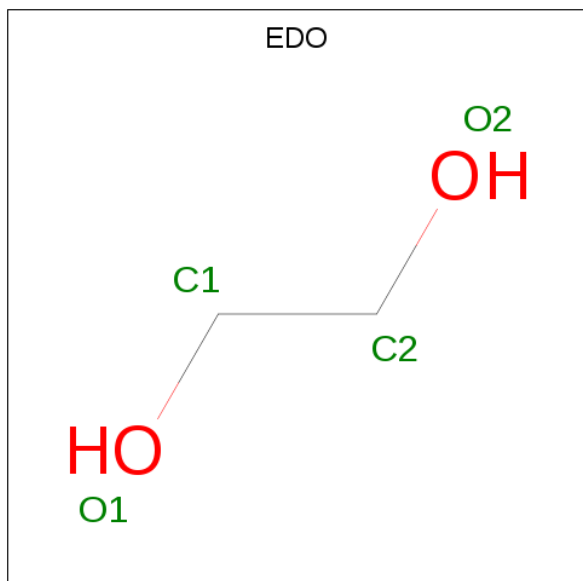
Mol	Chain	Residues	Atoms				ZeroOcc	AltConf
2	A	1	Total	C	N	O	0	0
			14	8	1	5		

- Molecule 3 is [3-[(1 {R})-1-(dimethylamino)ethyl]-4-oxidanyl-phenyl] {N}-ethyl- {N}-methyl-carbamate (three-letter code: BY2) (formula: C₁₄H₂₂N₂O₃).



Mol	Chain	Residues	Atoms				ZeroOcc	AltConf
3	A	1	Total	C	N	O	0	0
			19	14	2	3		

- Molecule 4 is 1,2-ETHANEDIOL (three-letter code: EDO) (formula: C₂H₆O₂).



Mol	Chain	Residues	Atoms			ZeroOcc	AltConf
4	A	1	Total	C	O	0	0
			4	2	2		

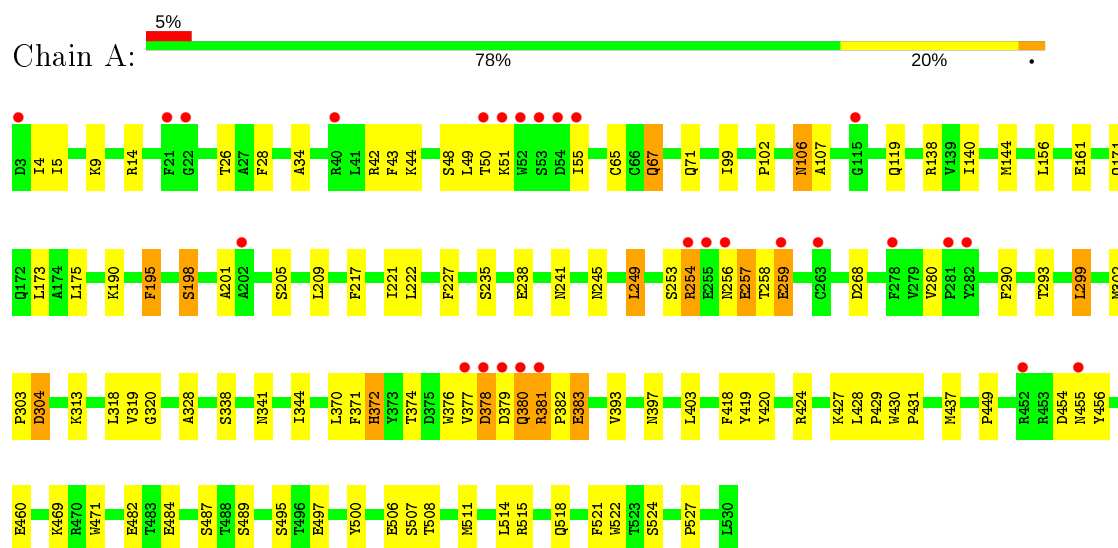
- Molecule 5 is water.

Mol	Chain	Residues	Atoms		ZeroOcc	AltConf
5	A	32	Total	O	0	0
			32	32		

3 Residue-property plots [i](#)

These plots are drawn for all protein, RNA, DNA and oligosaccharide chains in the entry. The first graphic for a chain summarises the proportions of the various outlier classes displayed in the second graphic. The second graphic shows the sequence view annotated by issues in geometry and electron density. Residues are color-coded according to the number of geometric quality criteria for which they contain at least one outlier: green = 0, yellow = 1, orange = 2 and red = 3 or more. A red dot above a residue indicates a poor fit to the electron density ($RSRZ > 2$). Stretches of 2 or more consecutive residues without any outlier are shown as a green connector. Residues present in the sample, but not in the model, are shown in grey.

• Molecule 1: Cholinesterase



4 Data and refinement statistics

Property	Value	Source
Space group	I 4 2 2	Depositor
Cell constants a, b, c, α , β , γ	154.18 Å 154.18 Å 127.75 Å 90.00° 90.00° 90.00°	Depositor
Resolution (Å)	38.55 – 2.60 38.55 – 2.60	Depositor EDS
% Data completeness (in resolution range)	99.7 (38.55-2.60) 99.7 (38.55-2.60)	Depositor EDS
R_{merge}	0.03	Depositor
R_{sym}	(Not available)	Depositor
$\langle I/\sigma(I) \rangle$ ¹	2.48 (at 2.61 Å)	Xtriage
Refinement program	PHENIX (1.11.1 _2575: ???)	Depositor
R, R_{free}	0.194 , 0.240 0.195 , 0.239	Depositor DCC
R_{free} test set	1158 reflections (4.85%)	wwPDB-VP
Wilson B-factor (Å ²)	52.5	Xtriage
Anisotropy	0.377	Xtriage
Bulk solvent k_{sol} (e/Å ³), B_{sol} (Å ²)	0.37 , 43.5	EDS
L-test for twinning ²	$\langle L \rangle = 0.48$, $\langle L^2 \rangle = 0.32$	Xtriage
Estimated twinning fraction	No twinning to report.	Xtriage
F_o, F_c correlation	0.94	EDS
Total number of atoms	4312	wwPDB-VP
Average B, all atoms (Å ²)	52.0	wwPDB-VP

Xtriage's analysis on translational NCS is as follows: *The largest off-origin peak in the Patterson function is 3.19% of the height of the origin peak. No significant pseudotranslation is detected.*

¹Intensities estimated from amplitudes.

²Theoretical values of $\langle |L| \rangle$, $\langle L^2 \rangle$ for acentric reflections are 0.5, 0.333 respectively for untwinned datasets, and 0.375, 0.2 for perfectly twinned datasets.

5 Model quality

5.1 Standard geometry

Bond lengths and bond angles in the following residue types are not validated in this section: BXT, BY2, EDO, NAG

The Z score for a bond length (or angle) is the number of standard deviations the observed value is removed from the expected value. A bond length (or angle) with $|Z| > 5$ is considered an outlier worth inspection. RMSZ is the root-mean-square of all Z scores of the bond lengths (or angles).

Mol	Chain	Bond lengths		Bond angles	
		RMSZ	$\# Z > 5$	RMSZ	$\# Z > 5$
1	A	0.81	1/4330 (0.0%)	0.72	7/5880 (0.1%)

All (1) bond length outliers are listed below:

Mol	Chain	Res	Type	Atoms	Z	Observed(Å)	Ideal(Å)
1	A	460	GLU	CD-OE1	-5.63	1.19	1.25

All (7) bond angle outliers are listed below:

Mol	Chain	Res	Type	Atoms	Z	Observed(°)	Ideal(°)
1	A	371	PHE	C-N-CA	-7.58	102.74	121.70
1	A	372[A]	HIS	N-CA-CB	-7.47	97.16	110.60
1	A	372[B]	HIS	N-CA-CB	-7.47	97.16	110.60
1	A	372[A]	HIS	N-CA-C	5.73	126.48	111.00
1	A	372[B]	HIS	N-CA-C	5.73	126.48	111.00
1	A	484	GLU	N-CA-C	5.29	125.27	111.00
1	A	381	ARG	C-N-CD	5.04	138.99	128.40

There are no chirality outliers.

There are no planarity outliers.

5.2 Too-close contacts

In the following table, the Non-H and H(model) columns list the number of non-hydrogen atoms and hydrogen atoms in the chain respectively. The H(added) column lists the number of hydrogen atoms added and optimized by MolProbity. The Clashes column lists the number of clashes within the asymmetric unit, whereas Symm-Clashes lists symmetry related clashes.

Mol	Chain	Non-H	H(model)	H(added)	Clashes	Symm-Clashes
1	A	4215	0	4098	92	0
2	A	42	0	39	6	0
3	A	19	0	0	0	0
4	A	4	0	6	0	0
5	A	32	0	0	6	0
All	All	4312	0	4143	94	0

The all-atom clashscore is defined as the number of clashes found per 1000 atoms (including hydrogen atoms). The all-atom clashscore for this structure is 11.

All (94) close contacts within the same asymmetric unit are listed below, sorted by their clash magnitude.

Atom-1	Atom-2	Interatomic distance (Å)	Clash overlap (Å)
1:A:377:VAL:HG23	1:A:378[B]:ASP:H	1.31	0.95
2:A:603:NAG:C6	5:A:702:HOH:O	2.16	0.92
1:A:256:ASN:O	1:A:259:GLU:N	2.02	0.92
1:A:377:VAL:HG23	1:A:378[A]:ASP:H	1.33	0.91
1:A:209:LEU:O	5:A:701:HOH:O	1.89	0.90
1:A:44:LYS:NZ	1:A:161:GLU:OE1	2.05	0.89
1:A:341:ASN:ND2	2:A:603:NAG:O7	2.05	0.88
1:A:254:ARG:HG2	1:A:254:ARG:HH11	1.39	0.85
1:A:253:SER:O	1:A:254:ARG:HG2	1.76	0.85
1:A:26:THR:HB	1:A:99:ILE:HD11	1.59	0.84
1:A:26:THR:HB	1:A:99:ILE:CG1	2.07	0.83
1:A:341:ASN:CG	2:A:603:NAG:O7	2.18	0.82
1:A:302:MET:HB3	1:A:304[B]:ASP:OD1	1.81	0.81
1:A:256:ASN:O	1:A:258:THR:N	2.18	0.76
1:A:26:THR:HB	1:A:99:ILE:CD1	2.15	0.75
1:A:377:VAL:CG2	1:A:378[B]:ASP:H	2.02	0.71
1:A:382:PRO:HD2	1:A:383:GLU:OE2	1.90	0.71
1:A:514:LEU:O	5:A:703:HOH:O	2.08	0.70
1:A:377:VAL:CG2	1:A:378[A]:ASP:H	2.03	0.70
1:A:106:ASN:O	5:A:704:HOH:O	2.12	0.68
1:A:377:VAL:HG23	1:A:378[A]:ASP:OD1	1.94	0.68
1:A:190:LYS:HD3	2:A:602:NAG:H61	1.75	0.67
1:A:370:LEU:HD12	1:A:374:THR:HG21	1.77	0.66
1:A:500:TYR:CZ	1:A:511:MET:HB2	2.31	0.66
1:A:26:THR:CB	1:A:99:ILE:HD11	2.25	0.65
1:A:370:LEU:CD1	1:A:374:THR:HG21	2.27	0.65
1:A:26:THR:O	1:A:99:ILE:HG12	1.97	0.64
1:A:254:ARG:HG2	1:A:254:ARG:NH1	2.11	0.64
1:A:245:ASN:O	1:A:249:LEU:HD12	1.97	0.64

Continued on next page...

Continued from previous page...

Atom-1	Atom-2	Interatomic distance (Å)	Clash overlap (Å)
1:A:370:LEU:HD12	1:A:374:THR:CG2	2.29	0.62
1:A:42:ARG:O	1:A:43:PHE:HB2	1.98	0.62
1:A:65:CYS:O	1:A:67:GLN:NE2	2.32	0.61
1:A:515:ARG:HG2	1:A:518:GLN:HB2	1.86	0.58
1:A:156:LEU:HD13	1:A:257:GLU:HG3	1.84	0.57
1:A:256:ASN:C	1:A:258:THR:N	2.59	0.56
1:A:28:PHE:HE1	1:A:99:ILE:HD13	1.71	0.55
1:A:428:LEU:HD22	1:A:429:PRO:HD2	1.89	0.54
1:A:256:ASN:C	1:A:258:THR:H	2.11	0.54
1:A:428:LEU:HD13	1:A:430:TRP:H	1.73	0.54
1:A:253:SER:C	1:A:254:ARG:HG2	2.26	0.54
1:A:341:ASN:ND2	2:A:603:NAG:C7	2.72	0.53
1:A:26:THR:HB	1:A:99:ILE:HG13	1.87	0.53
1:A:254:ARG:NH1	1:A:254:ARG:CG	2.72	0.52
1:A:254:ARG:HH11	1:A:254:ARG:CG	2.15	0.51
1:A:403:LEU:HD11	1:A:514:LEU:HB3	1.92	0.51
1:A:299:LEU:HD11	1:A:303:PRO:HG3	1.93	0.51
1:A:171:GLN:O	1:A:175:LEU:HG	2.11	0.50
1:A:205:SER:HB3	1:A:222:LEU:HD21	1.94	0.49
1:A:319:VAL:O	1:A:418:PHE:HA	2.12	0.49
1:A:253:SER:O	1:A:254:ARG:NH1	2.44	0.48
1:A:119:GLN:NE2	1:A:290:PHE:O	2.37	0.48
1:A:338:SER:HB3	1:A:341:ASN:HB2	1.95	0.48
1:A:383:GLU:CD	1:A:383:GLU:H	2.17	0.47
1:A:302:MET:CB	1:A:304[B]:ASP:OD1	2.57	0.47
1:A:378[B]:ASP:HB3	1:A:381:ARG:HG3	1.94	0.47
1:A:378[A]:ASP:HB2	1:A:381:ARG:HG3	1.95	0.46
1:A:256:ASN:OD1	1:A:258:THR:HB	2.16	0.46
1:A:34:ALA:HB2	1:A:173:LEU:HD23	1.98	0.46
1:A:515:ARG:NH2	5:A:712:HOH:O	2.50	0.46
1:A:420:TYR:OH	1:A:515:ARG:NH1	2.49	0.45
1:A:522:TRP:O	1:A:527:PRO:HD3	2.16	0.45
1:A:380:GLN:HE21	1:A:380:GLN:HB3	1.59	0.45
1:A:5:ILE:HD13	1:A:55:ILE:HD13	1.97	0.45
1:A:344:ILE:HG23	1:A:382:PRO:O	2.17	0.44
1:A:256:ASN:O	1:A:259:GLU:HB2	2.18	0.44
1:A:500:TYR:CE1	1:A:511:MET:HB2	2.53	0.44
2:A:603:NAG:H62	5:A:702:HOH:O	2.02	0.44
1:A:372[B]:HIS:CE1	1:A:521:PHE:HB2	2.53	0.43
1:A:26:THR:CG2	1:A:99:ILE:HD11	2.48	0.43
1:A:221:ILE:HG23	1:A:318:LEU:HD22	2.00	0.43

Continued on next page...

Continued from previous page...

Atom-1	Atom-2	Interatomic distance (Å)	Clash overlap (Å)
1:A:449:PRO:HA	1:A:456:TYR:CD2	2.53	0.43
1:A:102:PRO:O	1:A:138:ARG:NH2	2.51	0.43
1:A:393:VAL:O	1:A:397:ASN:HB2	2.17	0.43
1:A:195:PHE:HB3	1:A:221:ILE:HB	2.01	0.42
1:A:217:PHE:O	1:A:313:LYS:HE2	2.19	0.42
1:A:161:GLU:HG3	1:A:258:THR:HG23	2.01	0.42
1:A:227:PHE:CE1	1:A:303:PRO:HB2	2.54	0.42
1:A:424:ARG:CZ	1:A:428:LEU:HD12	2.50	0.42
1:A:430:TRP:HB3	1:A:431:PRO:HD2	2.02	0.41
1:A:198:BXT:O	1:A:201:ALA:N	2.53	0.41
1:A:320:GLY:HA3	1:A:419:TYR:CE2	2.55	0.41
1:A:469:LYS:HG2	1:A:482:GLU:HG2	2.03	0.41
1:A:235:SER:OG	1:A:238:GLU:HG2	2.20	0.41
1:A:328:ALA:HB2	1:A:437:MET:HE2	2.02	0.41
1:A:227:PHE:CD1	1:A:227:PHE:C	2.95	0.40
1:A:5:ILE:HG12	1:A:14:ARG:HB2	2.04	0.40
1:A:195:PHE:CB	1:A:221:ILE:HB	2.51	0.40
1:A:107:ALA:HB3	1:A:140:ILE:HD12	2.02	0.40

There are no symmetry-related clashes.

5.3 Torsion angles [i](#)

5.3.1 Protein backbone [i](#)

In the following table, the Percentiles column shows the percent Ramachandran outliers of the chain as a percentile score with respect to all X-ray entries followed by that with respect to entries of similar resolution.

The Analysed column shows the number of residues for which the backbone conformation was analysed, and the total number of residues.

Mol	Chain	Analysed	Favoured	Allowed	Outliers	Percentiles
1	A	528/528 (100%)	497 (94%)	29 (6%)	2 (0%)	34 57

All (2) Ramachandran outliers are listed below:

Mol	Chain	Res	Type
1	A	257	GLU
1	A	51	LYS

5.3.2 Protein sidechains ⓘ

In the following table, the Percentiles column shows the percent sidechain outliers of the chain as a percentile score with respect to all X-ray entries followed by that with respect to entries of similar resolution.

The Analysed column shows the number of residues for which the sidechain conformation was analysed, and the total number of residues.

Mol	Chain	Analysed	Rotameric	Outliers	Percentiles	
1	A	453/452 (100%)	415 (92%)	38 (8%)	11	21

All (38) residues with a non-rotameric sidechain are listed below:

Mol	Chain	Res	Type
1	A	4	ILE
1	A	9	LYS
1	A	48	SER
1	A	49	LEU
1	A	50	THR
1	A	67	GLN
1	A	71	GLN
1	A	106	ASN
1	A	144	MET
1	A	195	PHE
1	A	241	ASN
1	A	249	LEU
1	A	254	ARG
1	A	259	GLU
1	A	268	ASP
1	A	280	VAL
1	A	293	THR
1	A	299	LEU
1	A	304[A]	ASP
1	A	304[B]	ASP
1	A	376	TRP
1	A	378[A]	ASP
1	A	378[B]	ASP
1	A	379	ASP
1	A	380	GLN
1	A	383	GLU
1	A	427	LYS
1	A	454	ASP
1	A	455	ASN
1	A	471	TRP

Continued on next page...

Continued from previous page...

Mol	Chain	Res	Type
1	A	487	SER
1	A	489	SER
1	A	495	SER
1	A	497	GLU
1	A	506	GLU
1	A	507	SER
1	A	508	THR
1	A	524	SER

Some sidechains can be flipped to improve hydrogen bonding and reduce clashes. All (1) such sidechains are listed below:

Mol	Chain	Res	Type
1	A	380	GLN

5.3.3 RNA ⓘ

There are no RNA molecules in this entry.

5.4 Non-standard residues in protein, DNA, RNA chains ⓘ

1 non-standard protein/DNA/RNA residue is modelled in this entry.

In the following table, the Counts columns list the number of bonds (or angles) for which Mogul statistics could be retrieved, the number of bonds (or angles) that are observed in the model and the number of bonds (or angles) that are defined in the Chemical Component Dictionary. The Link column lists molecule types, if any, to which the group is linked. The Z score for a bond length (or angle) is the number of standard deviations the observed value is removed from the expected value. A bond length (or angle) with $|Z| > 2$ is considered an outlier worth inspection. RMSZ is the root-mean-square of all Z scores of the bond lengths (or angles).

Mol	Type	Chain	Res	Link	Bond lengths			Bond angles		
					Counts	RMSZ	$\# Z > 2$	Counts	RMSZ	$\# Z > 2$
1	BXT	A	198	1	9,11,12	2.04	3 (33%)	6,13,15	6.54	3 (50%)

In the following table, the Chirals column lists the number of chiral outliers, the number of chiral centers analysed, the number of these observed in the model and the number defined in the Chemical Component Dictionary. Similar counts are reported in the Torsion and Rings columns. '-' means no outliers of that kind were identified.

Mol	Type	Chain	Res	Link	Chirals	Torsions	Rings
1	BXT	A	198	1	-	4/11/13/15	-

All (3) bond length outliers are listed below:

Mol	Chain	Res	Type	Atoms	Z	Observed(Å)	Ideal(Å)
1	A	198	BXT	C1-N3	3.58	1.46	1.35
1	A	198	BXT	OG-C1	3.35	1.40	1.34
1	A	198	BXT	OG-CB	-2.82	1.38	1.45

All (3) bond angle outliers are listed below:

Mol	Chain	Res	Type	Atoms	Z	Observed(°)	Ideal(°)
1	A	198	BXT	OG-C1-N3	14.50	125.29	111.19
1	A	198	BXT	OG-C1-O2	-4.81	116.58	124.78
1	A	198	BXT	OG-CB-CA	4.45	121.05	108.48

There are no chirality outliers.

All (4) torsion outliers are listed below:

Mol	Chain	Res	Type	Atoms
1	A	198	BXT	N3-C1-OG-CB
1	A	198	BXT	O2-C1-OG-CB
1	A	198	BXT	OG-C1-N3-C4
1	A	198	BXT	O2-C1-N3-C4

There are no ring outliers.

1 monomer is involved in 1 short contact:

Mol	Chain	Res	Type	Clashes	Symm-Clashes
1	A	198	BXT	1	0

5.5 Carbohydrates [i](#)

There are no monosaccharides in this entry.

5.6 Ligand geometry [i](#)

5 ligands are modelled in this entry.

In the following table, the Counts columns list the number of bonds (or angles) for which Mogul statistics could be retrieved, the number of bonds (or angles) that are observed in the model and

the number of bonds (or angles) that are defined in the Chemical Component Dictionary. The Link column lists molecule types, if any, to which the group is linked. The Z score for a bond length (or angle) is the number of standard deviations the observed value is removed from the expected value. A bond length (or angle) with $|Z| > 2$ is considered an outlier worth inspection. RMSZ is the root-mean-square of all Z scores of the bond lengths (or angles).

Mol	Type	Chain	Res	Link	Bond lengths			Bond angles		
					Counts	RMSZ	# Z > 2	Counts	RMSZ	# Z > 2
2	NAG	A	602	1	14,14,15	0.40	0	17,19,21	0.76	0
2	NAG	A	601	1	14,14,15	0.92	0	17,19,21	1.84	2 (11%)
3	BY2	A	604	-	18,19,19	1.23	2 (11%)	22,26,26	1.40	4 (18%)
2	NAG	A	603	-	14,14,15	1.27	2 (14%)	17,19,21	2.56	6 (35%)
4	EDO	A	605	-	3,3,3	0.32	0	2,2,2	0.57	0

In the following table, the Chirals column lists the number of chiral outliers, the number of chiral centers analysed, the number of these observed in the model and the number defined in the Chemical Component Dictionary. Similar counts are reported in the Torsion and Rings columns. '-' means no outliers of that kind were identified.

Mol	Type	Chain	Res	Link	Chirals	Torsions	Rings
2	NAG	A	602	1	-	3/6/23/26	0/1/1/1
2	NAG	A	601	1	-	2/6/23/26	0/1/1/1
3	BY2	A	604	-	-	7/18/18/18	0/1/1/1
2	NAG	A	603	-	-	4/6/23/26	0/1/1/1
4	EDO	A	605	-	-	0/1/1/1	-

All (4) bond length outliers are listed below:

Mol	Chain	Res	Type	Atoms	Z	Observed(Å)	Ideal(Å)
3	A	604	BY2	C11-N02	3.24	1.45	1.35
3	A	604	BY2	O01-C11	2.57	1.42	1.36
2	A	603	NAG	C2-N2	-2.24	1.42	1.46
2	A	603	NAG	O7-C7	-2.14	1.18	1.23

All (12) bond angle outliers are listed below:

Mol	Chain	Res	Type	Atoms	Z	Observed(°)	Ideal(°)
2	A	601	NAG	O5-C1-C2	-6.20	101.50	111.29
2	A	603	NAG	C1-O5-C5	5.97	120.28	112.19
2	A	603	NAG	C4-C3-C2	-4.13	104.97	111.02
2	A	603	NAG	O3-C3-C4	-4.05	100.99	110.35
2	A	603	NAG	O4-C4-C5	3.65	118.36	109.30
2	A	603	NAG	O4-C4-C3	-2.98	103.46	110.35

Continued on next page...

Continued from previous page...

Mol	Chain	Res	Type	Atoms	Z	Observed(°)	Ideal(°)
2	A	603	NAG	O5-C5-C6	-2.85	102.73	107.20
3	A	604	BY2	C06-C07-N01	2.76	114.60	109.80
3	A	604	BY2	C05-C06-C07	-2.76	116.98	121.39
3	A	604	BY2	C01-C06-C07	2.72	124.60	119.96
2	A	601	NAG	C1-O5-C5	2.71	115.87	112.19
3	A	604	BY2	C10-N01-C07	2.71	118.21	112.19

There are no chirality outliers.

All (16) torsion outliers are listed below:

Mol	Chain	Res	Type	Atoms
3	A	604	BY2	O01-C11-N02-C14
3	A	604	BY2	C06-C07-N01-C10
2	A	603	NAG	C3-C2-N2-C7
2	A	601	NAG	O5-C5-C6-O6
2	A	602	NAG	O5-C5-C6-O6
2	A	603	NAG	O5-C5-C6-O6
2	A	601	NAG	C4-C5-C6-O6
2	A	603	NAG	C4-C5-C6-O6
2	A	602	NAG	C4-C5-C6-O6
3	A	604	BY2	O03-C11-N02-C14
2	A	603	NAG	C1-C2-N2-C7
3	A	604	BY2	C08-C07-N01-C10
2	A	602	NAG	C3-C2-N2-C7
3	A	604	BY2	C01-C06-C07-C08
3	A	604	BY2	C08-C07-N01-C09
3	A	604	BY2	C05-C06-C07-C08

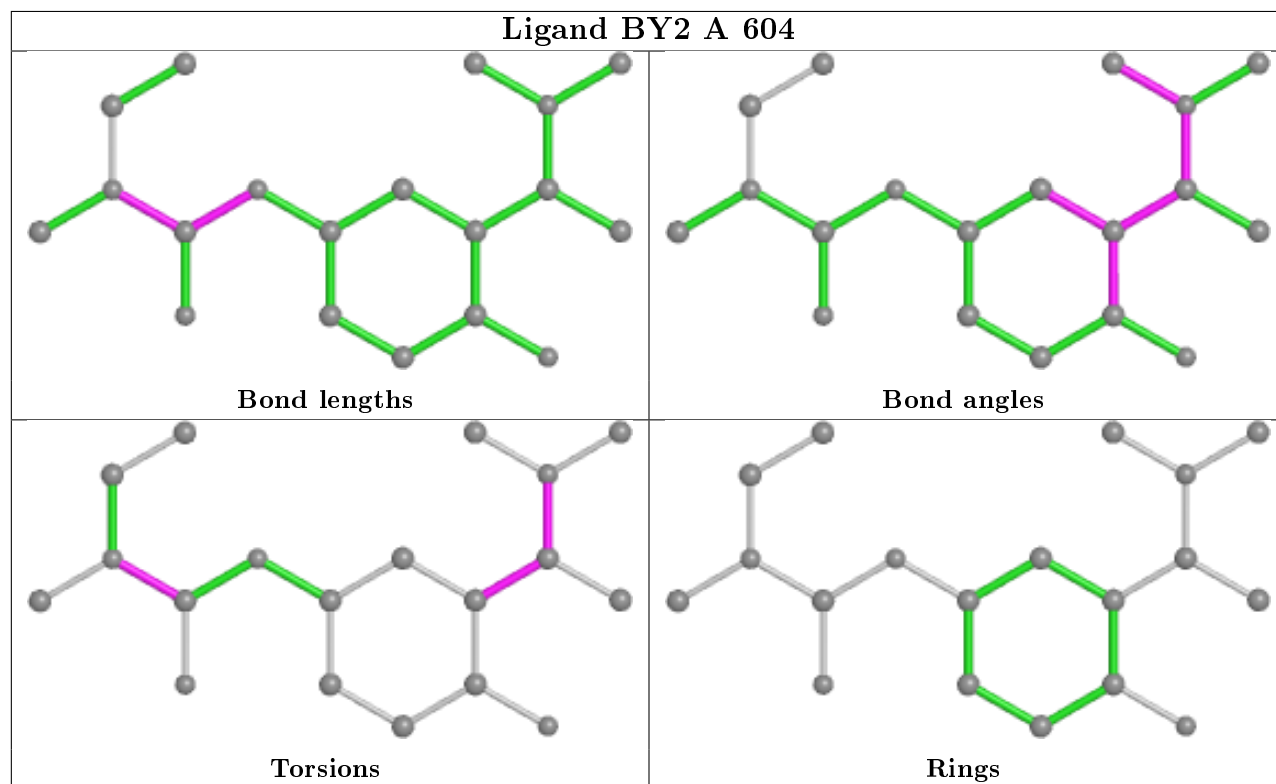
There are no ring outliers.

2 monomers are involved in 6 short contacts:

Mol	Chain	Res	Type	Clashes	Symm-Clashes
2	A	602	NAG	1	0
2	A	603	NAG	5	0

The following is a two-dimensional graphical depiction of Mogul quality analysis of bond lengths, bond angles, torsion angles, and ring geometry for all instances of the Ligand of Interest. In addition, ligands with molecular weight > 250 and outliers as shown on the validation Tables will also be included. For torsion angles, if less than 5% of the Mogul distribution of torsion angles is within 10 degrees of the torsion angle in question, then that torsion angle is considered an outlier. Any bond that is central to one or more torsion angles identified as an outlier by Mogul will be highlighted in the graph. For rings, the root-mean-square deviation (RMSD) between the ring

in question and similar rings identified by Mogul is calculated over all ring torsion angles. If the average RMSD is greater than 60 degrees and the minimal RMSD between the ring in question and any Mogul-identified rings is also greater than 60 degrees, then that ring is considered an outlier. The outliers are highlighted in purple. The color gray indicates Mogul did not find sufficient equivalents in the CSD to analyse the geometry.



5.7 Other polymers [i](#)

There are no such residues in this entry.

5.8 Polymer linkage issues [i](#)

There are no chain breaks in this entry.

6 Fit of model and data ⓘ

6.1 Protein, DNA and RNA chains ⓘ

In the following table, the column labelled ‘#RSRZ> 2’ contains the number (and percentage) of RSRZ outliers, followed by percent RSRZ outliers for the chain as percentile scores relative to all X-ray entries and entries of similar resolution. The OWAB column contains the minimum, median, 95th percentile and maximum values of the occupancy-weighted average B-factor per residue. The column labelled ‘Q< 0.9’ lists the number of (and percentage) of residues with an average occupancy less than 0.9.

Mol	Chain	Analysed	<RSRZ>	#RSRZ>2	OWAB(Å ²)	Q<0.9
1	A	527/528 (99%)	0.12	27 (5%) 28 22	32, 48, 78, 114	0

All (27) RSRZ outliers are listed below:

Mol	Chain	Res	Type	RSRZ
1	A	282	TYR	7.5
1	A	3	ASP	5.1
1	A	379	ASP	4.9
1	A	281	PRO	4.0
1	A	255	GLU	3.7
1	A	380	GLN	3.4
1	A	378[A]	ASP	3.4
1	A	381	ARG	3.3
1	A	53	SER	3.3
1	A	263	CYS	3.2
1	A	377	VAL	3.2
1	A	259	GLU	3.1
1	A	278	PHE	3.0
1	A	54	ASP	2.9
1	A	55	ILE	2.9
1	A	51	LYS	2.8
1	A	455	ASN	2.7
1	A	52	TRP	2.7
1	A	40	ARG	2.5
1	A	256	ASN	2.5
1	A	115	GLY	2.3
1	A	21	PHE	2.3
1	A	202	ALA	2.1
1	A	452	ARG	2.1
1	A	254	ARG	2.1
1	A	50	THR	2.1
1	A	22	GLY	2.0

6.2 Non-standard residues in protein, DNA, RNA chains [i](#)

In the following table, the Atoms column lists the number of modelled atoms in the group and the number defined in the chemical component dictionary. The B-factors column lists the minimum, median, 95th percentile and maximum values of B factors of atoms in the group. The column labelled 'Q< 0.9' lists the number of atoms with occupancy less than 0.9.

Mol	Type	Chain	Res	Atoms	RSCC	RSR	B-factors(Å ²)	Q<0.9
1	BXT	A	198	12/13	0.94	0.28	35,42,45,47	0

6.3 Carbohydrates [i](#)

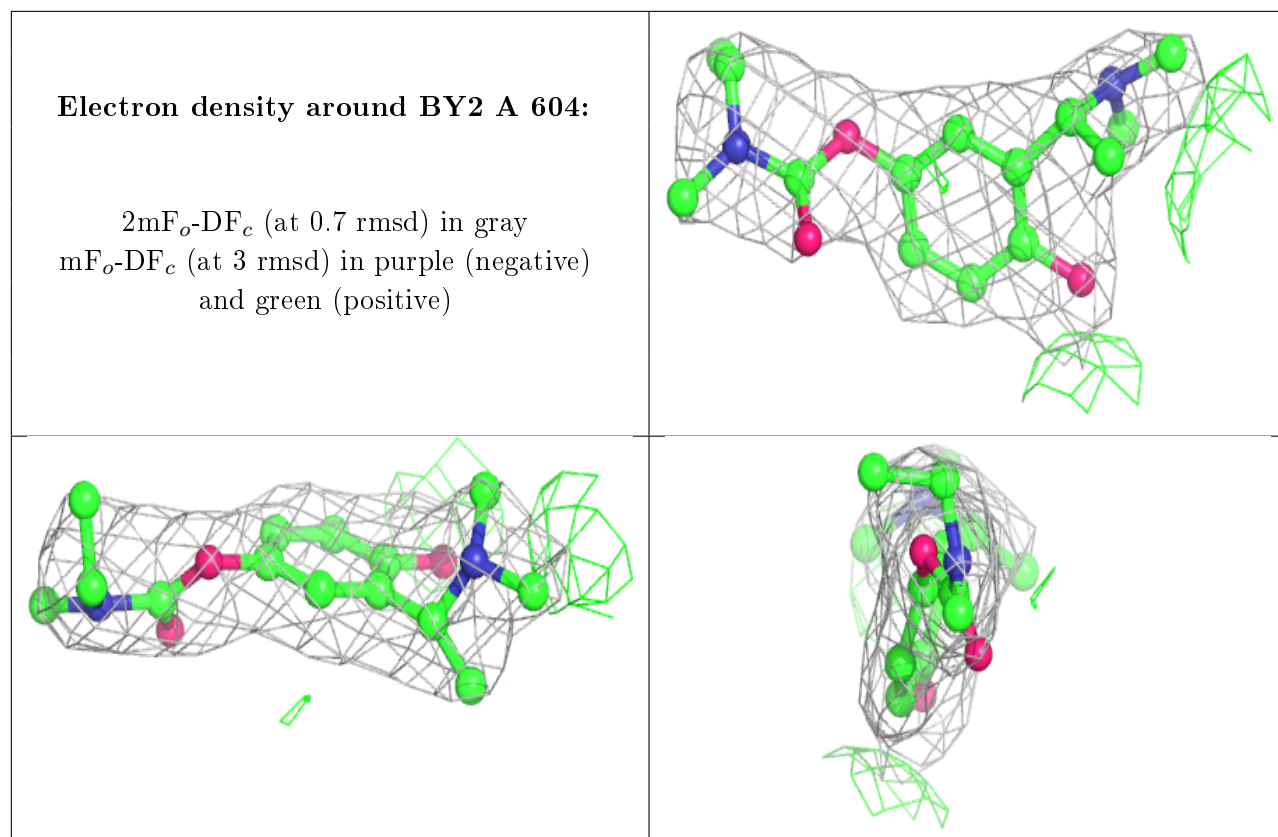
There are no monosaccharides in this entry.

6.4 Ligands [i](#)

In the following table, the Atoms column lists the number of modelled atoms in the group and the number defined in the chemical component dictionary. The B-factors column lists the minimum, median, 95th percentile and maximum values of B factors of atoms in the group. The column labelled 'Q< 0.9' lists the number of atoms with occupancy less than 0.9.

Mol	Type	Chain	Res	Atoms	RSCC	RSR	B-factors(Å ²)	Q<0.9
2	NAG	A	602	14/15	0.67	0.29	79,84,91,96	0
2	NAG	A	601	14/15	0.77	0.31	79,94,98,100	0
2	NAG	A	603	14/15	0.84	0.20	57,64,69,69	0
4	EDO	A	605	4/4	0.85	0.52	50,50,55,59	0
3	BY2	A	604	19/19	0.92	0.20	44,48,56,59	0

The following is a graphical depiction of the model fit to experimental electron density of all instances of the Ligand of Interest. In addition, ligands with molecular weight > 250 and outliers as shown on the geometry validation Tables will also be included. Each fit is shown from different orientation to approximate a three-dimensional view.



6.5 Other polymers [i](#)

There are no such residues in this entry.