



Full wwPDB X-ray Structure Validation Report ⓘ

Oct 12, 2021 – 09:33 AM EDT

PDB ID : 2EVW
Title : Crystal structure analysis of a fluorescent form of H-Ras p21 in complex with R-caged GTP
Authors : Klink, B.U.
Deposited on : 2005-11-01
Resolution : 1.05 Å(reported)

This is a Full wwPDB X-ray Structure Validation Report for a publicly released PDB entry.

We welcome your comments at validation@mail.wwpdb.org

A user guide is available at

<https://www.wwpdb.org/validation/2017/XrayValidationReportHelp>

with specific help available everywhere you see the ⓘ symbol.

The following versions of software and data (see [references ⓘ](#)) were used in the production of this report:

MolProbity : 4.02b-467
Mogul : 1.8.5 (274361), CSD as541be (2020)
Xtriage (Phenix) : 1.13
EDS : 2.23.2
buster-report : 1.1.7 (2018)
Percentile statistics : 20191225.v01 (using entries in the PDB archive December 25th 2019)
Refmac : 5.8.0158
CCP4 : 7.0.044 (Gargrove)
Ideal geometry (proteins) : Engh & Huber (2001)
Ideal geometry (DNA, RNA) : Parkinson et al. (1996)
Validation Pipeline (wwPDB-VP) : 2.23.2

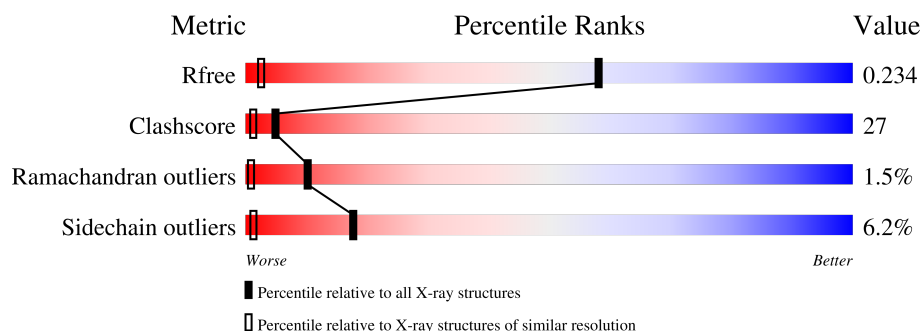
1 Overall quality at a glance

The following experimental techniques were used to determine the structure:

X-RAY DIFFRACTION

The reported resolution of this entry is 1.05 Å.

Percentile scores (ranging between 0-100) for global validation metrics of the entry are shown in the following graphic. The table shows the number of entries on which the scores are based.



Metric	Whole archive (#Entries)	Similar resolution (#Entries, resolution range(Å))
R_{free}	130704	1202 (1.10-1.02)
Clashscore	141614	1252 (1.10-1.02)
Ramachandran outliers	138981	1204 (1.10-1.02)
Sidechain outliers	138945	1202 (1.10-1.02)

The table below summarises the geometric issues observed across the polymeric chains and their fit to the electron density. The red, orange, yellow and green segments of the lower bar indicate the fraction of residues that contain outliers for ≥ 3 , 2, 1 and 0 types of geometric quality criteria respectively. A grey segment represents the fraction of residues that are not modelled. The numeric value for each fraction is indicated below the corresponding segment, with a dot representing fractions $\leq 5\%$.

Mol	Chain	Length	Quality of chain
1	1-X	166	 66% 28% 5%
1	2-X	166	 70% 28%

2 Entry composition

There are 5 unique types of molecules in this entry. The entry contains 3242 atoms, of which 0 are hydrogens and 0 are deuteriums.

In the tables below, the ZeroOcc column contains the number of atoms modelled with zero occupancy, the AltConf column contains the number of residues with at least one atom in alternate conformation and the Trace column contains the number of residues modelled with at most 2 atoms.

- Molecule 1 is a protein called GTPase HRas.

Mol	Chain	Residues	Atoms					ZeroOcc	AltConf	Trace
1	1-X	166	Total	C	N	O	S	0	166	0
			1317	818	228	264	7			
1	2-X	166	Total	C	N	O	S	0	166	0
			1317	818	228	264	7			

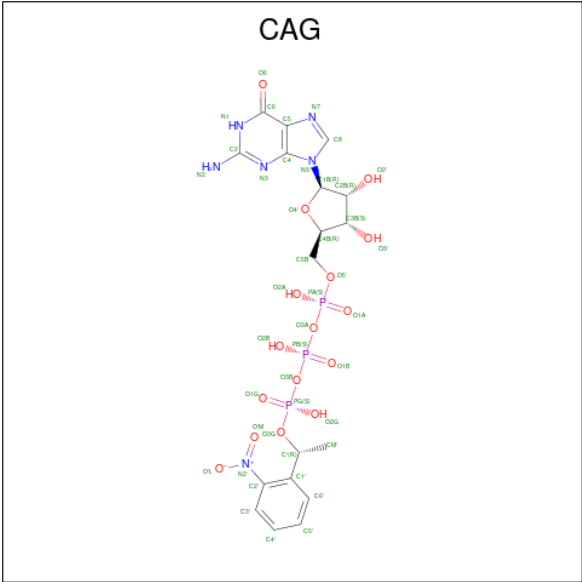
There are 2 discrepancies between the modelled and reference sequences:

Chain	Residue	Modelled	Actual	Comment	Reference
X	32	CYS	TYR	engineered mutation	UNP P01112
X	118	SER	CYS	engineered mutation	UNP P01112

- Molecule 2 is MAGNESIUM ION (three-letter code: MG) (formula: Mg).

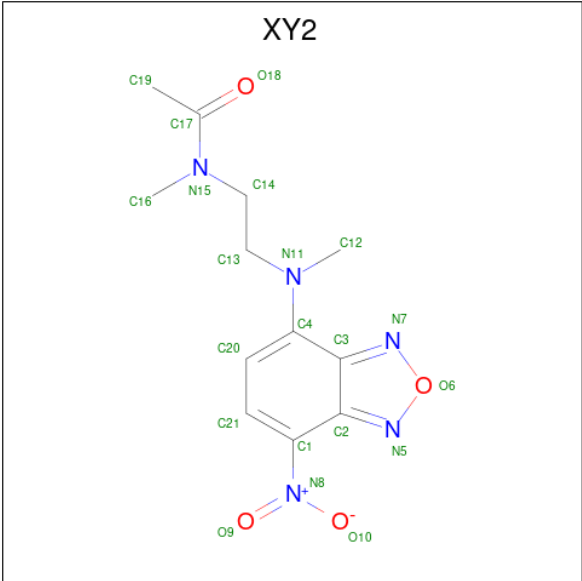
Mol	Chain	Residues	Atoms		ZeroOcc	AltConf
2	1-X	1	Total	Mg	0	1
			1	1		
2	2-X	1	Total	Mg	0	1
			1	1		

- Molecule 3 is GUANOSINE 5'-TRIPHOSPHATE P3-[1-(2-NITROPHENYL)ETHYL ESTER] (three-letter code: CAG) (formula: C₁₈H₂₃N₆O₁₆P₃).



Mol	Chain	Residues	Atoms					ZeroOcc	AltConf
3	1-X	1	Total	C	N	O	P	0	1
			43	18	6	16	3		
3	2-X	1	Total	C	N	O	P	0	1
			43	18	6	16	3		

- Molecule 4 is N,N'-DIMETHYL-N-(ACETYL)-N'-(7-NITROBENZ-2-OXA-1,3-DIAZOL-4-YL)ETHYLENEDIAMINE (three-letter code: XY2) (formula: C₁₂H₁₅N₅O₄).



Mol	Chain	Residues	Atoms				ZeroOcc	AltConf
4	1-X	1	Total	C	N	O	0	1
			21	12	5	4		

Continued on next page...

Continued from previous page...

Mol	Chain	Residues	Atoms				ZeroOcc	AltConf
4	2-X	1	Total	C	N	O	0	1
			21	12	5	4		

- Molecule 5 is water.

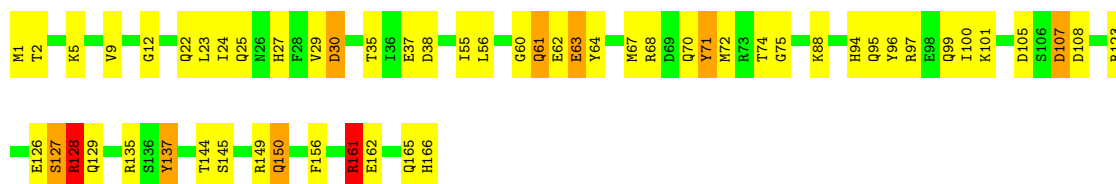
Mol	Chain	Residues	Atoms		ZeroOcc	AltConf
5	1-X	239	Total	O	0	239
			239	239		
5	2-X	239	Total	O	0	239
			239	239		

3 Residue-property plots [i](#)

These plots are drawn for all protein, RNA, DNA and oligosaccharide chains in the entry. The first graphic for a chain summarises the proportions of the various outlier classes displayed in the second graphic. The second graphic shows the sequence view annotated by issues in geometry. Residues are color-coded according to the number of geometric quality criteria for which they contain at least one outlier: green = 0, yellow = 1, orange = 2 and red = 3 or more. Stretches of 2 or more consecutive residues without any outlier are shown as a green connector. Residues present in the sample, but not in the model, are shown in grey.

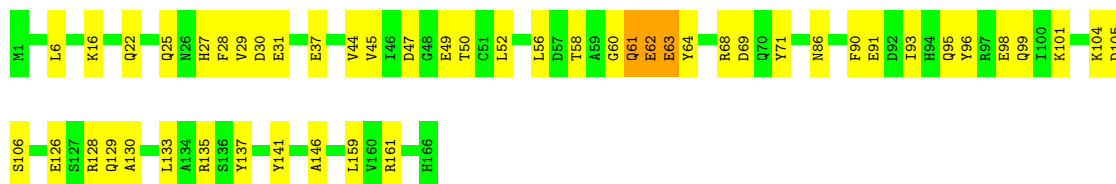
• Molecule 1: GTPase HRas

Chain 1-X:  66% 28% 5%



• Molecule 1: GTPase HRas

Chain 2-X:  70% 28% 0%



4 Data and refinement statistics

Property	Value	Source
Space group	P 41	Depositor
Cell constants a, b, c, α , β , γ	69.30Å 69.30Å 35.51Å 90.00° 90.00° 90.00°	Depositor
Resolution (Å)	69.34 – 1.05 19.36 – 1.05	Depositor EDS
% Data completeness (in resolution range)	99.9 (69.34-1.05) 99.9 (19.36-1.05)	Depositor EDS
R_{merge}	0.05	Depositor
R_{sym}	0.05	Depositor
$\langle I/\sigma(I) \rangle$ ¹	2.40 (at 1.05Å)	Xtriage
Refinement program	REFMAC	Depositor
R, R_{free}	0.156 , 0.181 0.208 , 0.234	Depositor DCC
R_{free} test set	3909 reflections (4.96%)	wwPDB-VP
Wilson B-factor (Å ²)	11.5	Xtriage
Anisotropy	0.389	Xtriage
Bulk solvent k_{sol} (e/Å ³), B_{sol} (Å ²)	0.38 , 45.3	EDS
L-test for twinning ²	$\langle L \rangle = 0.49$, $\langle L^2 \rangle = 0.32$	Xtriage
Estimated twinning fraction	0.032 for h,-k,-l	Xtriage
F_o, F_c correlation	0.97	EDS
Total number of atoms	3242	wwPDB-VP
Average B, all atoms (Å ²)	9.0	wwPDB-VP

Xtriage's analysis on translational NCS is as follows: *The largest off-origin peak in the Patterson function is 8.49% of the height of the origin peak. No significant pseudotranslation is detected.*

¹Intensities estimated from amplitudes.

²Theoretical values of $\langle |L| \rangle$, $\langle L^2 \rangle$ for acentric reflections are 0.5, 0.333 respectively for untwinned datasets, and 0.375, 0.2 for perfectly twinned datasets.

5 Model quality [i](#)

5.1 Standard geometry [i](#)

Bond lengths and bond angles in the following residue types are not validated in this section: MG, XY2, CAG

The Z score for a bond length (or angle) is the number of standard deviations the observed value is removed from the expected value. A bond length (or angle) with $|Z| > 5$ is considered an outlier worth inspection. RMSZ is the root-mean-square of all Z scores of the bond lengths (or angles).

Mol	Chain	Bond lengths		Bond angles	
		RMSZ	$\# Z > 5$	RMSZ	$\# Z > 5$
1	1-X	0.75	1/1335 (0.1%)	0.97	7/1800 (0.4%)

All (1) bond length outliers are listed below:

Mol	Chain	Res	Type	Atoms	Z	Observed(Å)	Ideal(Å)
1	1-X	127[A]	SER	CB-OG	-5.28	1.35	1.42

All (7) bond angle outliers are listed below:

Mol	Chain	Res	Type	Atoms	Z	Observed(°)	Ideal(°)
1	1-X	161[A]	ARG	NE-CZ-NH1	7.75	124.18	120.30
1	1-X	135[A]	ARG	NE-CZ-NH2	7.52	124.06	120.30
1	1-X	123[A]	ARG	NE-CZ-NH1	6.52	123.56	120.30
1	1-X	135[A]	ARG	NE-CZ-NH1	-6.47	117.06	120.30
1	1-X	123[A]	ARG	NE-CZ-NH2	-6.13	117.23	120.30
1	1-X	128[A]	ARG	NE-CZ-NH2	6.05	123.33	120.30
1	1-X	137[A]	TYR	CB-CG-CD2	-5.26	117.85	121.00

There are no chirality outliers.

There are no planarity outliers.

5.2 Too-close contacts [i](#)

In the following table, the Non-H and H(model) columns list the number of non-hydrogen atoms and hydrogen atoms in the chain respectively. The H(added) column lists the number of hydrogen atoms added and optimized by MolProbity. The Clashes column lists the number of clashes within the asymmetric unit, whereas Symm-Clashes lists symmetry-related clashes.

Mol	Chain	Non-H	H(model)	H(added)	Clashes	Symm-Clashes
1	1-X	1317	0	1289	86	0
1	2-X	1317	0	1289	58	0
2	1-X	1	0	0	0	0
2	2-X	1	0	0	0	0
3	1-X	43	0	20	2	0
3	2-X	43	0	20	2	0
4	1-X	21	0	13	1	0
4	2-X	21	0	13	1	0
5	1-X	239	0	0	11	0
5	2-X	239	0	0	12	0
All	All	3242	0	2644	148	0

The all-atom clashscore is defined as the number of clashes found per 1000 atoms (including hydrogen atoms). The all-atom clashscore for this structure is 27.

All (148) close contacts within the same asymmetric unit are listed below, sorted by their clash magnitude.

Atom-1	Atom-2	Interatomic distance (Å)	Clash overlap (Å)
1:X:62[A]:GLU:O	1:X:63[A]:GLU:HG3	1.38	1.23
1:X:64[B]:TYR:HE1	1:X:69[B]:ASP:OD1	1.23	1.16
1:X:61[A]:GLN:CG	1:X:68[A]:ARG:HH12	1.59	1.16
1:X:61[B]:GLN:O	1:X:62[B]:GLU:HB2	1.50	1.09
1:X:37[B]:GLU:HG2	1:X:56[B]:LEU:HD11	1.41	1.02
1:X:61[A]:GLN:HG2	1:X:68[A]:ARG:NH1	1.75	1.01
1:X:161[A]:ARG:HG2	1:X:165[A]:GLN:NE2	1.78	0.98
1:X:62[A]:GLU:O	1:X:63[A]:GLU:CG	2.11	0.98
1:X:64[B]:TYR:CE1	1:X:69[B]:ASP:OD1	2.16	0.98
1:X:61[A]:GLN:C	1:X:63[A]:GLU:H	1.66	0.98
1:X:61[A]:GLN:HG3	1:X:68[A]:ARG:HH12	1.29	0.96
1:X:64[A]:TYR:HB2	1:X:99[A]:GLN:NE2	1.83	0.93
1:X:61[A]:GLN:HG2	1:X:68[A]:ARG:HH12	1.27	0.91
1:X:61[B]:GLN:O	1:X:62[B]:GLU:CB	2.20	0.89
1:X:61[A]:GLN:CG	1:X:68[A]:ARG:NH1	2.34	0.88
1:X:161[A]:ARG:HG2	1:X:165[A]:GLN:HE21	1.35	0.88
1:X:5[A]:LYS:HG2	1:X:75[A]:GLY:HA2	1.55	0.88
1:X:62[B]:GLU:O	1:X:63[B]:GLU:CB	2.23	0.87
1:X:37[B]:GLU:CG	1:X:56[B]:LEU:HD11	2.07	0.85
1:X:5[A]:LYS:CG	1:X:75[A]:GLY:HA2	2.09	0.83
1:X:144[A]:THR:HA	1:X:150[A]:GLN:OE1	1.81	0.81
1:X:61[A]:GLN:C	1:X:63[A]:GLU:N	2.33	0.80
1:X:126[A]:GLU:OE1	5:X:383[A]:HOH:O	2.00	0.80
1:X:161[A]:ARG:CG	1:X:165[A]:GLN:NE2	2.45	0.79

Continued on next page...

Continued from previous page...

Atom-1	Atom-2	Interatomic distance (Å)	Clash overlap (Å)
1:X:86[B]:ASN:ND2	5:X:558[B]:HOH:O	2.16	0.78
4:X:332[B]:XY2:N7	4:X:332[B]:XY2:H121	1.99	0.78
1:X:12[A]:GLY:HA2	3:X:367[A]:CAG:O2G	1.84	0.77
4:X:332[A]:XY2:N7	4:X:332[A]:XY2:H121	1.97	0.77
1:X:126[A]:GLU:OE2	5:X:541[A]:HOH:O	2.02	0.77
1:X:67[A]:MET:HG3	1:X:71[A]:TYR:CZ	2.20	0.76
1:X:67[A]:MET:HE2	1:X:70[A]:GLN:NE2	2.00	0.75
1:X:67[A]:MET:CE	1:X:70[A]:GLN:NE2	2.50	0.74
1:X:62[B]:GLU:O	1:X:63[B]:GLU:HB2	1.86	0.74
1:X:67[A]:MET:HG3	1:X:71[A]:TYR:OH	1.89	0.72
1:X:62[A]:GLU:O	1:X:63[A]:GLU:CB	2.38	0.71
1:X:144[A]:THR:CA	1:X:150[A]:GLN:OE1	2.38	0.71
1:X:68[A]:ARG:NH2	1:X:99[A]:GLN:OE1	2.23	0.71
1:X:64[B]:TYR:HE1	1:X:69[B]:ASP:CG	1.92	0.70
1:X:64[A]:TYR:HB2	1:X:99[A]:GLN:HE22	1.56	0.70
1:X:61[B]:GLN:HB3	1:X:96[B]:TYR:OH	1.92	0.70
1:X:144[A]:THR:C	1:X:150[A]:GLN:OE1	2.30	0.69
1:X:67[A]:MET:HE2	1:X:67[A]:MET:HA	1.74	0.69
1:X:68[A]:ARG:HA	1:X:71[A]:TYR:CD1	2.28	0.69
1:X:67[A]:MET:HE1	1:X:70[A]:GLN:HE22	1.60	0.67
1:X:91[B]:GLU:HG2	5:X:430[B]:HOH:O	1.94	0.66
1:X:68[A]:ARG:HA	1:X:71[A]:TYR:CE1	2.31	0.65
1:X:45[B]:VAL:HA	1:X:49[B]:GLU:O	1.96	0.65
1:X:30[A]:ASP:OD2	1:X:30[A]:ASP:N	2.29	0.65
1:X:161[A]:ARG:HH11	1:X:161[A]:ARG:HB3	1.62	0.65
1:X:67[A]:MET:CE	1:X:70[A]:GLN:HE22	2.07	0.64
1:X:99[B]:GLN:HG3	5:X:448[B]:HOH:O	1.97	0.64
1:X:1[A]:MET:HG2	1:X:2[A]:THR:N	2.13	0.64
1:X:68[A]:ARG:HE	1:X:72[A]:MET:HE1	1.63	0.64
1:X:62[B]:GLU:O	1:X:63[B]:GLU:HB3	1.98	0.63
1:X:9[A]:VAL:HG21	1:X:100[A]:ILE:HD11	1.81	0.63
1:X:62[A]:GLU:C	1:X:63[A]:GLU:HG3	2.18	0.62
1:X:129[B]:GLN:CG	5:X:407[B]:HOH:O	2.48	0.61
1:X:5[A]:LYS:CE	5:X:409[A]:HOH:O	2.48	0.61
1:X:129[B]:GLN:HG3	5:X:407[B]:HOH:O	2.01	0.61
1:X:68[A]:ARG:HE	1:X:72[A]:MET:CE	2.14	0.59
1:X:61[A]:GLN:OE1	1:X:99[A]:GLN:NE2	2.35	0.59
1:X:25[A]:GLN:OE1	1:X:27[A]:HIS:HE1	1.86	0.59
1:X:1[A]:MET:HG2	1:X:2[A]:THR:H	1.66	0.59
1:X:61[B]:GLN:HB2	1:X:96[B]:TYR:HE1	1.67	0.59
1:X:5[A]:LYS:HG2	1:X:75[A]:GLY:CA	2.32	0.59

Continued on next page...

Continued from previous page...

Atom-1	Atom-2	Interatomic distance (Å)	Clash overlap (Å)
1:X:22[B]:GLN:HG3	1:X:146[B]:ALA:O	2.03	0.58
1:X:98[B]:GLU:HG2	5:X:567[B]:HOH:O	2.04	0.58
1:X:101[A]:LYS:NZ	1:X:107[A]:ASP:HA	2.19	0.57
1:X:64[B]:TYR:CE1	1:X:69[B]:ASP:CG	2.72	0.56
1:X:61[B]:GLN:CG	1:X:62[B]:GLU:H	2.19	0.56
1:X:5[A]:LYS:HE2	1:X:74[A]:THR:OG1	2.05	0.56
1:X:61[A]:GLN:O	1:X:62[A]:GLU:HB3	2.06	0.56
1:X:68[B]:ARG:CZ	1:X:71[B]:TYR:OH	2.54	0.55
1:X:60[B]:GLY:O	1:X:61[B]:GLN:O	2.25	0.55
1:X:47[B]:ASP:OD1	1:X:161[B]:ARG:NE	2.27	0.55
1:X:128[A]:ARG:HH21	1:X:128[A]:ARG:CG	2.20	0.54
1:X:95[A]:GLN:HG3	5:X:529[A]:HOH:O	2.08	0.54
1:X:130[B]:ALA:CB	1:X:141[B]:TYR:CZ	2.91	0.54
1:X:161[A]:ARG:NE	5:X:508[A]:HOH:O	2.41	0.54
1:X:161[A]:ARG:CZ	5:X:508[A]:HOH:O	2.56	0.54
1:X:6[B]:LEU:HD13	1:X:159[B]:LEU:HD23	1.90	0.54
1:X:61[B]:GLN:HG2	1:X:62[B]:GLU:N	2.23	0.54
1:X:61[B]:GLN:HB2	1:X:96[B]:TYR:CE1	2.43	0.53
1:X:37[A]:GLU:OE1	1:X:56[A]:LEU:HD11	2.09	0.53
1:X:126[B]:GLU:OE1	1:X:128[B]:ARG:NH1	2.42	0.53
1:X:133[B]:LEU:HD11	1:X:137[B]:TYR:CZ	2.44	0.53
1:X:68[A]:ARG:HG2	1:X:72[A]:MET:HE2	1.91	0.52
1:X:96[A]:TYR:O	1:X:97[A]:ARG:C	2.48	0.52
1:X:5[A]:LYS:HE2	5:X:409[A]:HOH:O	2.09	0.52
1:X:67[A]:MET:CG	1:X:71[A]:TYR:OH	2.57	0.52
1:X:67[A]:MET:HE1	1:X:70[A]:GLN:NE2	2.19	0.52
1:X:97[A]:ARG:NH2	5:X:567[A]:HOH:O	2.43	0.51
1:X:23[A]:LEU:HD22	1:X:156[A]:PHE:CD1	2.46	0.50
1:X:130[B]:ALA:HB3	1:X:141[B]:TYR:CZ	2.46	0.50
1:X:135[B]:ARG:NH2	5:X:568[B]:HOH:O	2.44	0.50
1:X:25[B]:GLN:OE1	1:X:27[B]:HIS:HE1	1.94	0.50
1:X:63[B]:GLU:HG2	1:X:64[B]:TYR:N	2.27	0.50
1:X:37[A]:GLU:OE1	1:X:71[A]:TYR:HB3	2.12	0.49
1:X:1[A]:MET:CG	1:X:2[A]:THR:H	2.25	0.49
1:X:22[A]:GLN:O	1:X:149[A]:ARG:NH2	2.44	0.49
1:X:44[B]:VAL:O	1:X:50[B]:THR:HA	2.13	0.49
1:X:101[B]:LYS:NZ	5:X:459[B]:HOH:O	2.46	0.49
1:X:61[B]:GLN:HG3	1:X:68[B]:ARG:CZ	2.43	0.48
1:X:61[B]:GLN:CB	1:X:96[B]:TYR:OH	2.61	0.48
1:X:60[A]:GLY:O	1:X:61[A]:GLN:C	2.51	0.48
1:X:135[B]:ARG:CZ	5:X:568[B]:HOH:O	2.61	0.48

Continued on next page...

Continued from previous page...

Atom-1	Atom-2	Interatomic distance (Å)	Clash overlap (Å)
1:X:61[A]:GLN:O	1:X:62[A]:GLU:CB	2.60	0.48
1:X:97[A]:ARG:HD3	1:X:137[A]:TYR:CZ	2.49	0.48
1:X:145[A]:SER:N	1:X:150[A]:GLN:OE1	2.47	0.48
1:X:29[B]:VAL:HG12	1:X:31[B]:GLU:HG2	1.94	0.48
1:X:95[B]:GLN:CD	5:X:448[B]:HOH:O	2.51	0.48
1:X:5[A]:LYS:HG3	1:X:75[A]:GLY:HA2	1.93	0.48
1:X:68[A]:ARG:CZ	1:X:99[A]:GLN:OE1	2.62	0.48
1:X:108[A]:ASP:OD2	1:X:166[A]:HIS:CD2	2.67	0.48
1:X:37[A]:GLU:CD	1:X:56[A]:LEU:HD11	2.34	0.47
1:X:129[B]:GLN:HG2	5:X:407[B]:HOH:O	2.12	0.47
1:X:61[B]:GLN:CG	1:X:62[B]:GLU:N	2.77	0.47
1:X:61[B]:GLN:HG2	1:X:62[B]:GLU:H	1.79	0.47
1:X:30[B]:ASP:HA	3:X:367[B]:CAG:O2'	2.14	0.47
1:X:45[B]:VAL:HG22	1:X:50[B]:THR:OG1	2.15	0.46
1:X:25[A]:GLN:OE1	1:X:27[A]:HIS:CE1	2.68	0.45
1:X:126[B]:GLU:HG2	1:X:128[B]:ARG:HG2	1.97	0.45
3:X:367[B]:CAG:O'L	3:X:367[B]:CAG:HCM1	2.17	0.45
3:X:367[A]:CAG:O'L	3:X:367[A]:CAG:H'	2.17	0.45
1:X:107[A]:ASP:OD1	1:X:107[A]:ASP:N	2.45	0.45
1:X:28[B]:PHE:HA	5:X:374[B]:HOH:O	2.17	0.45
1:X:94[A]:HIS:CD2	1:X:137[A]:TYR:OH	2.70	0.44
1:X:101[A]:LYS:HZ2	1:X:107[A]:ASP:HA	1.81	0.44
1:X:128[A]:ARG:HH21	1:X:128[A]:ARG:HG3	1.83	0.44
1:X:130[B]:ALA:HB1	1:X:141[B]:TYR:CE1	2.54	0.43
1:X:29[A]:VAL:HG23	5:X:517[A]:HOH:O	2.18	0.43
1:X:88[A]:LYS:NZ	5:X:572[A]:HOH:O	2.52	0.42
1:X:68[B]:ARG:HA	1:X:71[B]:TYR:CE2	2.54	0.42
1:X:97[A]:ARG:HD3	1:X:137[A]:TYR:CE1	2.54	0.42
1:X:61[A]:GLN:O	1:X:63[A]:GLU:N	2.48	0.42
1:X:16[B]:LYS:HE3	1:X:58[B]:THR:O	2.19	0.42
1:X:101[A]:LYS:HZ1	1:X:107[A]:ASP:HA	1.84	0.41
1:X:61[B]:GLN:CB	1:X:96[B]:TYR:CE1	3.03	0.41
1:X:24[A]:ILE:HD11	1:X:55[A]:ILE:HD12	2.03	0.41
1:X:63[B]:GLU:CG	1:X:64[B]:TYR:N	2.83	0.41
1:X:90[B]:PHE:O	1:X:93[B]:ILE:HB	2.21	0.41
1:X:161[A]:ARG:NH2	5:X:603[A]:HOH:O	2.53	0.41
1:X:35[A]:THR:HG23	1:X:38[A]:ASP:OD1	2.21	0.41
1:X:97[A]:ARG:HD2	1:X:137[A]:TYR:CD2	2.56	0.41
1:X:162[A]:GLU:O	1:X:166[A]:HIS:ND1	2.53	0.41
1:X:104[B]:LYS:O	1:X:105[B]:ASP:C	2.60	0.40
1:X:104[B]:LYS:C	1:X:106[B]:SER:N	2.72	0.40

Continued on next page...

Continued from previous page...

Atom-1	Atom-2	Interatomic distance (Å)	Clash overlap (Å)
1:X:52[B]:LEU:C	1:X:52[B]:LEU:HD13	2.41	0.40

There are no symmetry-related clashes.

5.3 Torsion angles [i](#)

5.3.1 Protein backbone [i](#)

In the following table, the Percentiles column shows the percent Ramachandran outliers of the chain as a percentile score with respect to all X-ray entries followed by that with respect to entries of similar resolution.

The Analysed column shows the number of residues for which the backbone conformation was analysed, and the total number of residues.

Mol	Chain	Analysed	Favoured	Allowed	Outliers	Percentiles	
1	1-X	164/166 (99%)	158 (96%)	4 (2%)	2 (1%)	13	1
1	2-X	164/166 (99%)	155 (94%)	6 (4%)	3 (2%)	8	1
All	All	328/332 (99%)	313 (95%)	10 (3%)	5 (2%)	10	1

All (5) Ramachandran outliers are listed below:

Mol	Chain	Res	Type
1	1-X	63[A]	GLU
1	2-X	61[B]	GLN
1	2-X	62[B]	GLU
1	2-X	63[B]	GLU
1	1-X	61[A]	GLN

5.3.2 Protein sidechains [i](#)

In the following table, the Percentiles column shows the percent sidechain outliers of the chain as a percentile score with respect to all X-ray entries followed by that with respect to entries of similar resolution.

The Analysed column shows the number of residues for which the sidechain conformation was analysed, and the total number of residues.

Continued on next page...

Continued from previous page...

Mol	Chain	Analysed	Rotameric	Outliers	Percentiles
-----	-------	----------	-----------	----------	-------------

Mol	Chain	Analysed	Rotameric	Outliers	Percentiles
1	1-X	144/144 (100%)	135 (94%)	9 (6%)	18 1

All (9) residues with a non-rotameric sidechain are listed below:

Mol	Chain	Res	Type
1	1-X	30[A]	ASP
1	1-X	71[A]	TYR
1	1-X	105[A]	ASP
1	1-X	107[A]	ASP
1	1-X	127[A]	SER
1	1-X	128[A]	ARG
1	1-X	129[A]	GLN
1	1-X	150[A]	GLN
1	1-X	161[A]	ARG

Sometimes sidechains can be flipped to improve hydrogen bonding and reduce clashes. All (5) such sidechains are listed below:

Mol	Chain	Res	Type
1	1-X	27[A]	HIS
1	1-X	70[A]	GLN
1	1-X	94[A]	HIS
1	1-X	95[A]	GLN
1	1-X	165[A]	GLN

5.3.3 RNA ⓘ

There are no RNA molecules in this entry.

5.4 Non-standard residues in protein, DNA, RNA chains ⓘ

There are no non-standard protein/DNA/RNA residues in this entry.

5.5 Carbohydrates ⓘ

There are no monosaccharides in this entry.

5.6 Ligand geometry

Of 6 ligands modelled in this entry, 2 are monoatomic - leaving 4 for Mogul analysis.

In the following table, the Counts columns list the number of bonds (or angles) for which Mogul statistics could be retrieved, the number of bonds (or angles) that are observed in the model and the number of bonds (or angles) that are defined in the Chemical Component Dictionary. The Link column lists molecule types, if any, to which the group is linked. The Z score for a bond length (or angle) is the number of standard deviations the observed value is removed from the expected value. A bond length (or angle) with $|Z| > 2$ is considered an outlier worth inspection. RMSZ is the root-mean-square of all Z scores of the bond lengths (or angles).

Mol	Type	Chain	Res	Link	Bond lengths			Bond angles		
					Counts	RMSZ	# Z > 2	Counts	RMSZ	# Z > 2
4	XY2	1-X	332[A]	1	19,22,22	0.87	1 (5%)	20,31,31	1.21	2 (10%)
4	XY2	2-X	332[B]	1	19,22,22	0.64	0	20,31,31	1.29	2 (10%)
3	CAG	2-X	367[B]	-	36,46,46	2.62	6 (16%)	39,71,71	1.59	6 (15%)
3	CAG	1-X	367[A]	2	36,46,46	2.26	8 (22%)	39,71,71	1.55	7 (17%)

In the following table, the Chirals column lists the number of chiral outliers, the number of chiral centers analysed, the number of these observed in the model and the number defined in the Chemical Component Dictionary. Similar counts are reported in the Torsion and Rings columns. '-' means no outliers of that kind were identified.

Mol	Type	Chain	Res	Link	Chirals	Torsions	Rings
4	XY2	1-X	332[A]	1	-	4/15/17/17	0/2/2/2
4	XY2	2-X	332[B]	1	-	3/15/17/17	0/2/2/2
3	CAG	2-X	367[B]	-	-	4/32/51/51	0/4/4/4
3	CAG	1-X	367[A]	2	-	3/32/51/51	0/4/4/4

All (15) bond length outliers are listed below:

Mol	Chain	Res	Type	Atoms	Z	Observed(Å)	Ideal(Å)
3	2-X	367[B]	CAG	C4-N9	-11.78	1.32	1.47
3	1-X	367[A]	CAG	C4-N9	-9.73	1.34	1.47
3	2-X	367[B]	CAG	C2'-C1'	7.82	1.50	1.39
3	1-X	367[A]	CAG	C2'-C1'	6.45	1.48	1.39
3	2-X	367[B]	CAG	C5-C6	-4.02	1.45	1.52
4	1-X	332[A]	XY2	C1-N8	-3.11	1.40	1.45
3	1-X	367[A]	CAG	C5-C6	-2.86	1.47	1.52
3	1-X	367[A]	CAG	O3G-C'	-2.78	1.43	1.46
3	2-X	367[B]	CAG	C8-N9	-2.70	1.36	1.45
3	1-X	367[A]	CAG	C2'-N2'	-2.66	1.40	1.45

Continued on next page...

Continued from previous page...

Mol	Chain	Res	Type	Atoms	Z	Observed(Å)	Ideal(Å)
3	1-X	367[A]	CAG	C8-N9	-2.49	1.37	1.45
3	2-X	367[B]	CAG	C2'-N2'	-2.36	1.41	1.45
3	1-X	367[A]	CAG	C2-N1	-2.24	1.35	1.44
3	2-X	367[B]	CAG	C2-N1	-2.16	1.35	1.44
3	1-X	367[A]	CAG	C1'-C'	-2.03	1.49	1.52

All (17) bond angle outliers are listed below:

Mol	Chain	Res	Type	Atoms	Z	Observed(°)	Ideal(°)
3	2-X	367[B]	CAG	C4-C5-N7	5.54	109.80	102.46
3	1-X	367[A]	CAG	C4-C5-N7	4.13	107.93	102.46
3	1-X	367[A]	CAG	C3'-C2'-N2'	3.76	120.49	116.47
3	2-X	367[B]	CAG	O4'-C1B-N9	-3.31	104.12	109.04
3	2-X	367[B]	CAG	O3G-C'-C1'	3.11	114.93	109.14
4	1-X	332[A]	XY2	C21-C1-N8	3.07	119.76	116.47
3	1-X	367[A]	CAG	C3'-C2'-C1'	-3.04	118.37	121.35
4	2-X	332[B]	XY2	C21-C1-N8	3.03	119.72	116.47
3	2-X	367[B]	CAG	C3'-C2'-C1'	-2.99	118.41	121.35
3	2-X	367[B]	CAG	O2A-PA-O5'	2.77	120.62	107.75
3	1-X	367[A]	CAG	O6-C6-N1	-2.63	119.15	122.69
3	1-X	367[A]	CAG	O2A-PA-O1A	2.35	123.88	112.24
4	2-X	332[B]	XY2	C20-C4-C3	-2.33	116.45	120.12
4	1-X	332[A]	XY2	C12-N11-C4	2.14	122.08	116.07
3	1-X	367[A]	CAG	PA-O3A-PB	-2.04	125.83	132.83
3	1-X	367[A]	CAG	C3B-C2B-C1B	2.03	105.28	101.43
3	2-X	367[B]	CAG	O4'-C4B-C3B	2.01	109.09	105.11

There are no chirality outliers.

All (14) torsion outliers are listed below:

Mol	Chain	Res	Type	Atoms
3	1-X	367[A]	CAG	C2B-C1B-N9-C4
3	2-X	367[B]	CAG	C2B-C1B-N9-C4
4	1-X	332[A]	XY2	C20-C4-N11-C12
4	2-X	332[B]	XY2	C3-C4-N11-C13
4	2-X	332[B]	XY2	C20-C4-N11-C12
4	1-X	332[A]	XY2	C3-C4-N11-C12
4	2-X	332[B]	XY2	C3-C4-N11-C12
3	2-X	367[B]	CAG	C3'-C2'-N2'-O'M
4	1-X	332[A]	XY2	C21-C1-N8-O9
4	1-X	332[A]	XY2	C3-C4-N11-C13
3	2-X	367[B]	CAG	PA-O3A-PB-O2B

Continued on next page...

Continued from previous page...

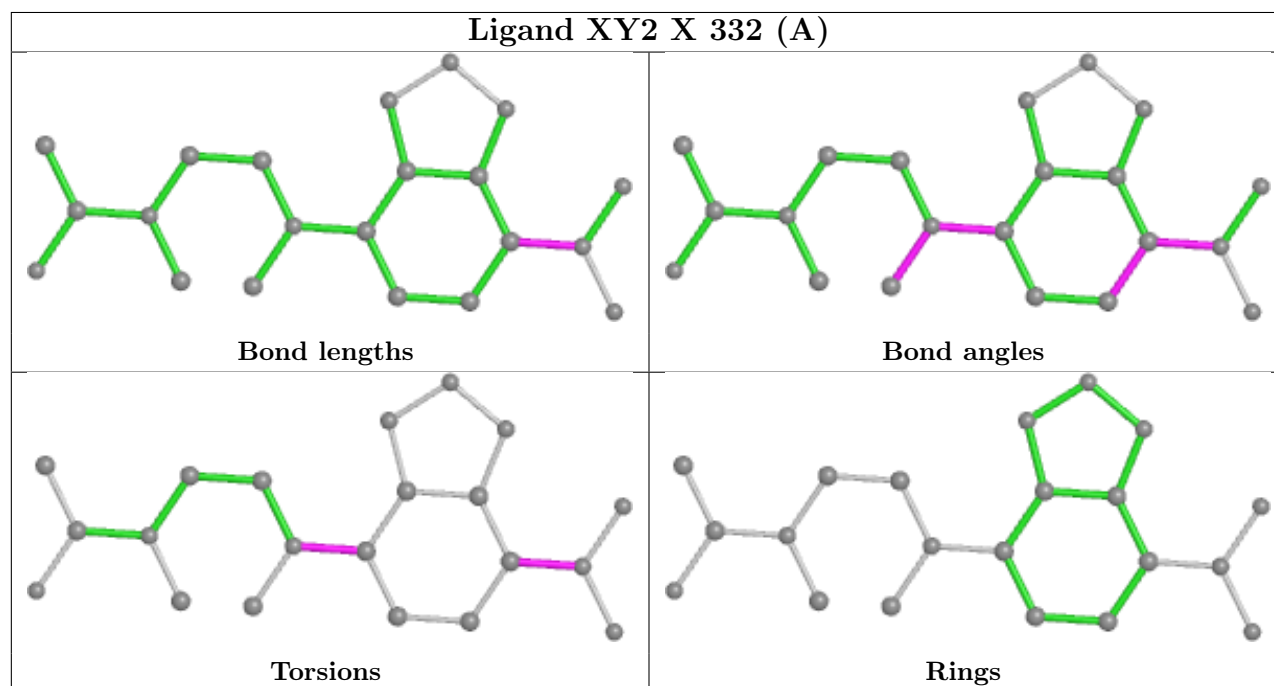
Mol	Chain	Res	Type	Atoms
3	1-X	367[A]	CAG	PA-O3A-PB-O1B
3	1-X	367[A]	CAG	PA-O3A-PB-O2B
3	2-X	367[B]	CAG	PA-O3A-PB-O1B

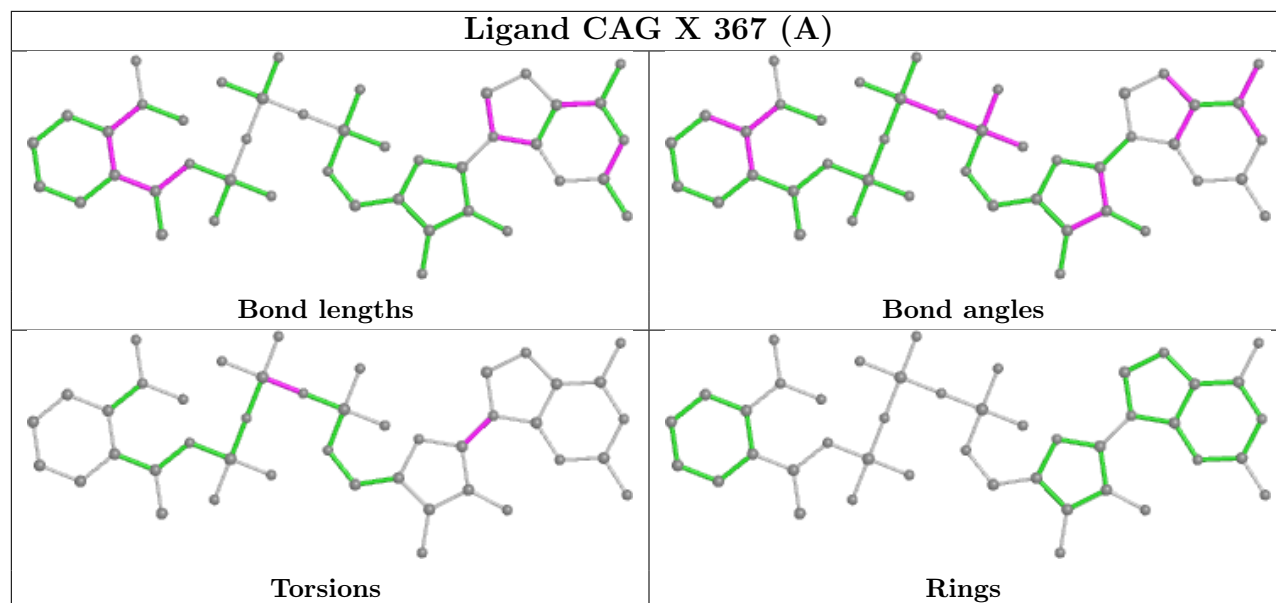
There are no ring outliers.

4 monomers are involved in 6 short contacts:

Mol	Chain	Res	Type	Clashes	Symm-Clashes
4	1-X	332[A]	XY2	1	0
4	2-X	332[B]	XY2	1	0
3	2-X	367[B]	CAG	2	0
3	1-X	367[A]	CAG	2	0

The following is a two-dimensional graphical depiction of Mogul quality analysis of bond lengths, bond angles, torsion angles, and ring geometry for all instances of the Ligand of Interest. In addition, ligands with molecular weight > 250 and outliers as shown on the validation Tables will also be included. For torsion angles, if less than 5% of the Mogul distribution of torsion angles is within 10 degrees of the torsion angle in question, then that torsion angle is considered an outlier. Any bond that is central to one or more torsion angles identified as an outlier by Mogul will be highlighted in the graph. For rings, the root-mean-square deviation (RMSD) between the ring in question and similar rings identified by Mogul is calculated over all ring torsion angles. If the average RMSD is greater than 60 degrees and the minimal RMSD between the ring in question and any Mogul-identified rings is also greater than 60 degrees, then that ring is considered an outlier. The outliers are highlighted in purple. The color gray indicates Mogul did not find sufficient equivalents in the CSD to analyse the geometry.





5.7 Other polymers [i](#)

There are no such residues in this entry.

5.8 Polymer linkage issues [i](#)

There are no chain breaks in this entry.

6 Fit of model and data ⓘ

6.1 Protein, DNA and RNA chains ⓘ

Unable to reproduce the depositors R factor - this section is therefore empty.

6.2 Non-standard residues in protein, DNA, RNA chains ⓘ

Unable to reproduce the depositors R factor - this section is therefore empty.

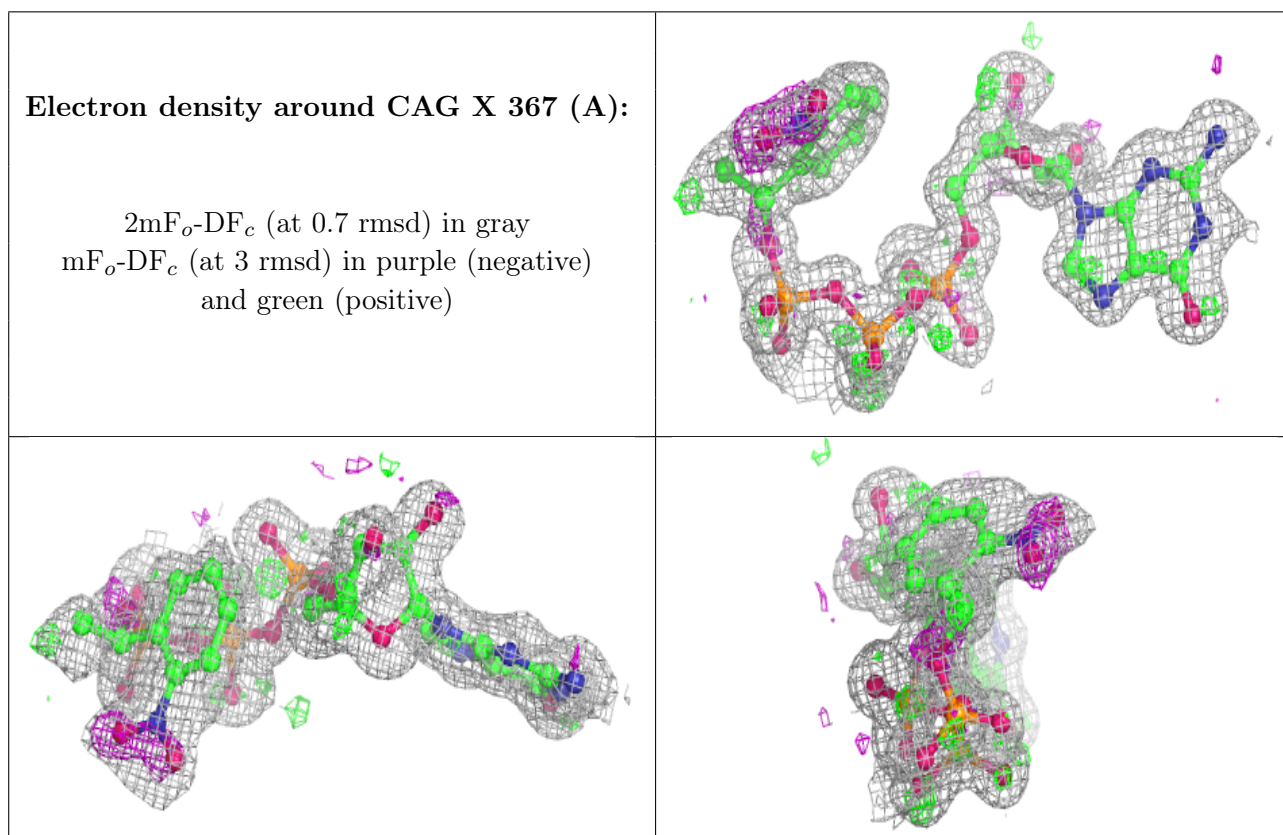
6.3 Carbohydrates ⓘ

Unable to reproduce the depositors R factor - this section is therefore empty.

6.4 Ligands ⓘ

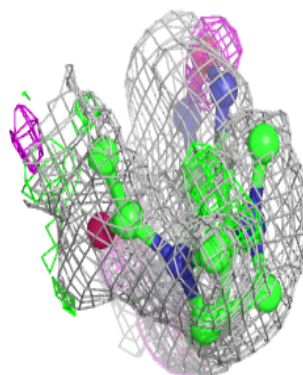
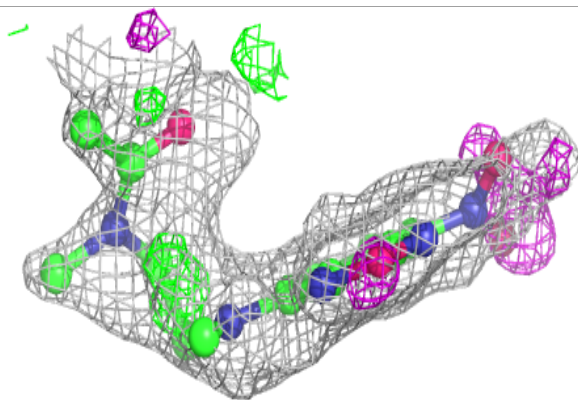
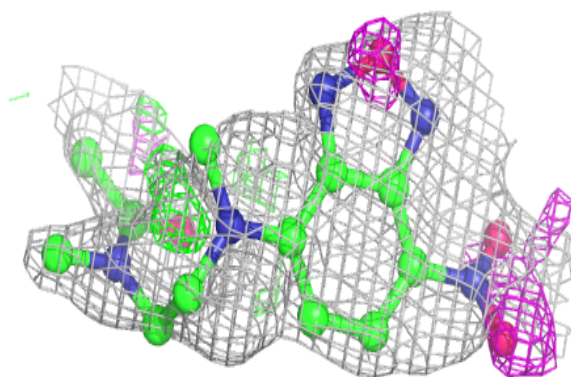
Unable to reproduce the depositors R factor - this section is therefore empty.

The following is a graphical depiction of the model fit to experimental electron density of all instances of the Ligand of Interest. In addition, ligands with molecular weight > 250 and outliers as shown on the geometry validation Tables will also be included. Each fit is shown from different orientation to approximate a three-dimensional view.



Electron density around XY2 X 332 (A):

$2mF_o - DF_c$ (at 0.7 rmsd) in gray
 $mF_o - DF_c$ (at 3 rmsd) in purple (negative)
and green (positive)



6.5 Other polymers [i](#)

Unable to reproduce the depositors R factor - this section is therefore empty.