



# Full wwPDB X-ray Structure Validation Report ⓘ

Oct 10, 2021 – 03:27 PM EDT

PDB ID : 3EVW  
Title : Crystal structure of the Mimivirus NDK R107G mutant complexed with dTDP  
Authors : Jeudy, S.; Lartigue, A.; Claverie, J.M.; Abergel, C.  
Deposited on : 2008-10-13  
Resolution : 2.60 Å(reported)

This is a Full wwPDB X-ray Structure Validation Report for a publicly released PDB entry.

We welcome your comments at [validation@mail.wwpdb.org](mailto:validation@mail.wwpdb.org)

A user guide is available at

<https://www.wwpdb.org/validation/2017/XrayValidationReportHelp>

with specific help available everywhere you see the ⓘ symbol.

---

The following versions of software and data (see [references ⓘ](#)) were used in the production of this report:

MolProbity : 4.02b-467  
Mogul : 1.8.5 (274361), CSD as541be (2020)  
Xtriage (Phenix) : 1.13  
EDS : 2.23.2  
buster-report : 1.1.7 (2018)  
Percentile statistics : 20191225.v01 (using entries in the PDB archive December 25th 2019)  
Refmac : 5.8.0158  
CCP4 : 7.0.044 (Gargrove)  
Ideal geometry (proteins) : Engh & Huber (2001)  
Ideal geometry (DNA, RNA) : Parkinson et al. (1996)  
Validation Pipeline (wwPDB-VP) : 2.23.2

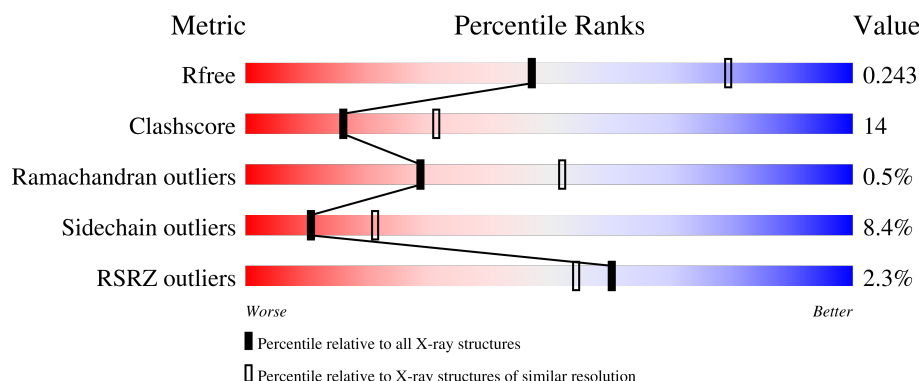
# 1 Overall quality at a glance

The following experimental techniques were used to determine the structure:

*X-RAY DIFFRACTION*

The reported resolution of this entry is 2.60 Å.

Percentile scores (ranging between 0-100) for global validation metrics of the entry are shown in the following graphic. The table shows the number of entries on which the scores are based.



Metric	Whole archive (#Entries)	Similar resolution (#Entries, resolution range(Å))
$R_{free}$	130704	3163 (2.60-2.60)
Clashscore	141614	3518 (2.60-2.60)
Ramachandran outliers	138981	3455 (2.60-2.60)
Sidechain outliers	138945	3455 (2.60-2.60)
RSRZ outliers	127900	3104 (2.60-2.60)

The table below summarises the geometric issues observed across the polymeric chains and their fit to the electron density. The red, orange, yellow and green segments of the lower bar indicate the fraction of residues that contain outliers for  $\geq 3$ , 2, 1 and 0 types of geometric quality criteria respectively. A grey segment represents the fraction of residues that are not modelled. The numeric value for each fraction is indicated below the corresponding segment, with a dot representing fractions  $\leq 5\%$ . The upper red bar (where present) indicates the fraction of residues that have poor fit to the electron density. The numeric value is given above the bar.

Mol	Chain	Length	Quality of chain
1	A	142	<div> <div>2%</div> <div>67%</div> <div>25%</div> <div>6%</div> </div>
1	B	142	<div> <div>54%</div> <div>30%</div> <div>8%</div> <div>8%</div> </div>
1	C	142	<div> <div>2%</div> <div>63%</div> <div>26%</div> <div>7%</div> </div>
1	D	142	<div> <div>%</div> <div>65%</div> <div>25%</div> <div>7%</div> </div>
1	E	142	<div> <div>5%</div> <div>65%</div> <div>26%</div> <div>7%</div> </div>

*Continued on next page...*

Continued from previous page...

Mol	Chain	Length	Quality of chain
1	F	142	<div><div></div><div>2%</div><div>57%</div><div>29%</div><div>6%</div><div>8%</div></div>

## 2 Entry composition

There are 4 unique types of molecules in this entry. The entry contains 6485 atoms, of which 0 are hydrogens and 0 are deuteriums.

In the tables below, the ZeroOcc column contains the number of atoms modelled with zero occupancy, the AltConf column contains the number of residues with at least one atom in alternate conformation and the Trace column contains the number of residues modelled with at most 2 atoms.

- Molecule 1 is a protein called Nucleoside diphosphate kinase.

Mol	Chain	Residues	Atoms					ZeroOcc	AltConf	Trace
1	A	133	Total	C	N	O	S	0	0	0
			1058	669	181	204	4			
1	B	130	Total	C	N	O	S	0	0	0
			1042	660	178	200	4			
1	C	132	Total	C	N	O	S	0	0	0
			1053	666	180	203	4			
1	D	132	Total	C	N	O	S	0	0	0
			1053	666	180	203	4			
1	E	132	Total	C	N	O	S	0	0	0
			1053	666	180	203	4			
1	F	130	Total	C	N	O	S	0	0	0
			1037	657	178	198	4			

There are 42 discrepancies between the modelled and reference sequences:

Chain	Residue	Modelled	Actual	Comment	Reference
A	-4	TYR	-	expression tag	UNP Q5UQL3
A	-3	LYS	-	expression tag	UNP Q5UQL3
A	-2	LYS	-	expression tag	UNP Q5UQL3
A	-1	ALA	-	expression tag	UNP Q5UQL3
A	0	GLY	-	expression tag	UNP Q5UQL3
A	1	LEU	-	expression tag	UNP Q5UQL3
A	107	GLY	ARG	engineered mutation	UNP Q5UQL3
B	-4	TYR	-	expression tag	UNP Q5UQL3
B	-3	LYS	-	expression tag	UNP Q5UQL3
B	-2	LYS	-	expression tag	UNP Q5UQL3
B	-1	ALA	-	expression tag	UNP Q5UQL3
B	0	GLY	-	expression tag	UNP Q5UQL3
B	1	LEU	-	expression tag	UNP Q5UQL3
B	107	GLY	ARG	engineered mutation	UNP Q5UQL3
C	-4	TYR	-	expression tag	UNP Q5UQL3
C	-3	LYS	-	expression tag	UNP Q5UQL3
C	-2	LYS	-	expression tag	UNP Q5UQL3

*Continued on next page...*

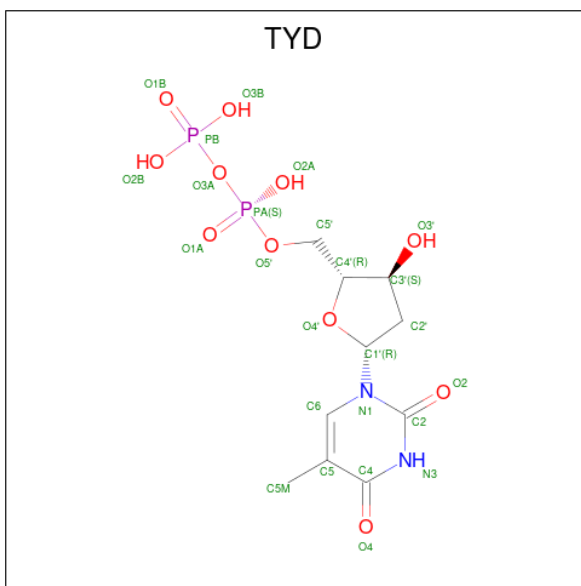
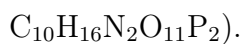
Continued from previous page...

Chain	Residue	Modelled	Actual	Comment	Reference
C	-1	ALA	-	expression tag	UNP Q5UQL3
C	0	GLY	-	expression tag	UNP Q5UQL3
C	1	LEU	-	expression tag	UNP Q5UQL3
C	107	GLY	ARG	engineered mutation	UNP Q5UQL3
D	-4	TYR	-	expression tag	UNP Q5UQL3
D	-3	LYS	-	expression tag	UNP Q5UQL3
D	-2	LYS	-	expression tag	UNP Q5UQL3
D	-1	ALA	-	expression tag	UNP Q5UQL3
D	0	GLY	-	expression tag	UNP Q5UQL3
D	1	LEU	-	expression tag	UNP Q5UQL3
D	107	GLY	ARG	engineered mutation	UNP Q5UQL3
E	-4	TYR	-	expression tag	UNP Q5UQL3
E	-3	LYS	-	expression tag	UNP Q5UQL3
E	-2	LYS	-	expression tag	UNP Q5UQL3
E	-1	ALA	-	expression tag	UNP Q5UQL3
E	0	GLY	-	expression tag	UNP Q5UQL3
E	1	LEU	-	expression tag	UNP Q5UQL3
E	107	GLY	ARG	engineered mutation	UNP Q5UQL3
F	-4	TYR	-	expression tag	UNP Q5UQL3
F	-3	LYS	-	expression tag	UNP Q5UQL3
F	-2	LYS	-	expression tag	UNP Q5UQL3
F	-1	ALA	-	expression tag	UNP Q5UQL3
F	0	GLY	-	expression tag	UNP Q5UQL3
F	1	LEU	-	expression tag	UNP Q5UQL3
F	107	GLY	ARG	engineered mutation	UNP Q5UQL3

- Molecule 2 is MAGNESIUM ION (three-letter code: MG) (formula: Mg).

Mol	Chain	Residues	Atoms	ZeroOcc	AltConf
2	A	1	Total Mg 1 1	0	0
2	B	1	Total Mg 1 1	0	0
2	C	1	Total Mg 1 1	0	0
2	D	1	Total Mg 1 1	0	0
2	E	1	Total Mg 1 1	0	0
2	F	1	Total Mg 1 1	0	0

- Molecule 3 is THYMIDINE-5'-DIPHOSPHATE (three-letter code: TYD) (formula:



Mol	Chain	Residues	Atoms					ZeroOcc	AltConf
3	A	1	Total 25	C 10	N 2	O 11	P 2	0	0
3	B	1	Total 25	C 10	N 2	O 11	P 2	0	0
3	C	1	Total 25	C 10	N 2	O 11	P 2	0	0
3	D	1	Total 25	C 10	N 2	O 11	P 2	0	0
3	E	1	Total 25	C 10	N 2	O 11	P 2	0	0
3	F	1	Total 25	C 10	N 2	O 11	P 2	0	0

- Molecule 4 is water.

Mol	Chain	Residues	Atoms	ZeroOcc	AltConf
4	A	5	Total O 5 5	0	0
4	B	4	Total O 4 4	0	0
4	C	10	Total O 10 10	0	0
4	D	7	Total O 7 7	0	0
4	E	5	Total O 5 5	0	0

*Continued on next page...*

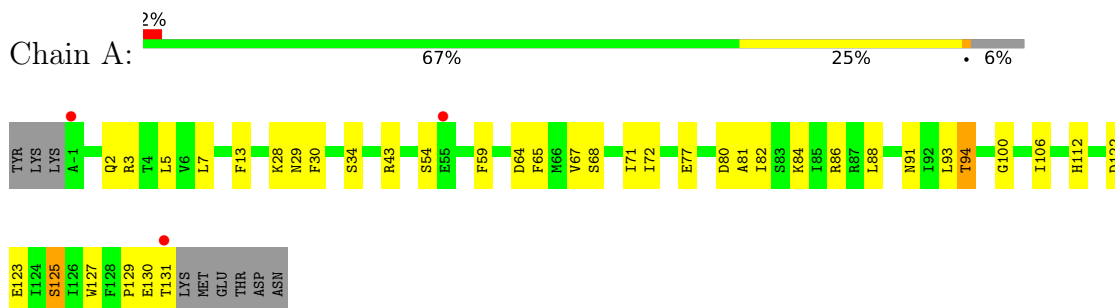
*Continued from previous page...*

Mol	Chain	Residues	Atoms		ZeroOcc	AltConf
4	F	2	Total	O	0	0
			2	2		

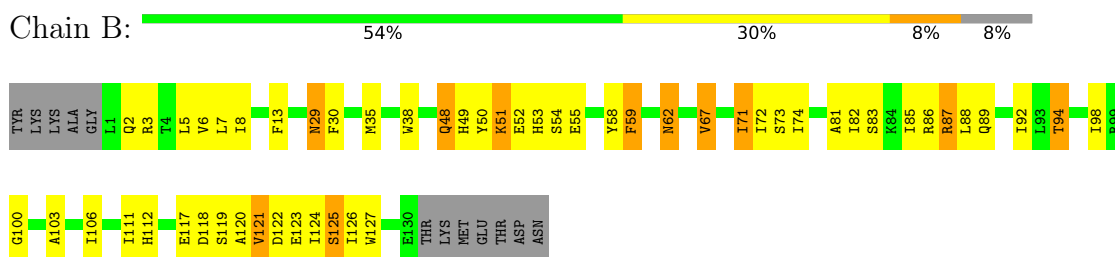
### 3 Residue-property plots [i](#)

These plots are drawn for all protein, RNA, DNA and oligosaccharide chains in the entry. The first graphic for a chain summarises the proportions of the various outlier classes displayed in the second graphic. The second graphic shows the sequence view annotated by issues in geometry and electron density. Residues are color-coded according to the number of geometric quality criteria for which they contain at least one outlier: green = 0, yellow = 1, orange = 2 and red = 3 or more. A red dot above a residue indicates a poor fit to the electron density ( $RSRZ > 2$ ). Stretches of 2 or more consecutive residues without any outlier are shown as a green connector. Residues present in the sample, but not in the model, are shown in grey.

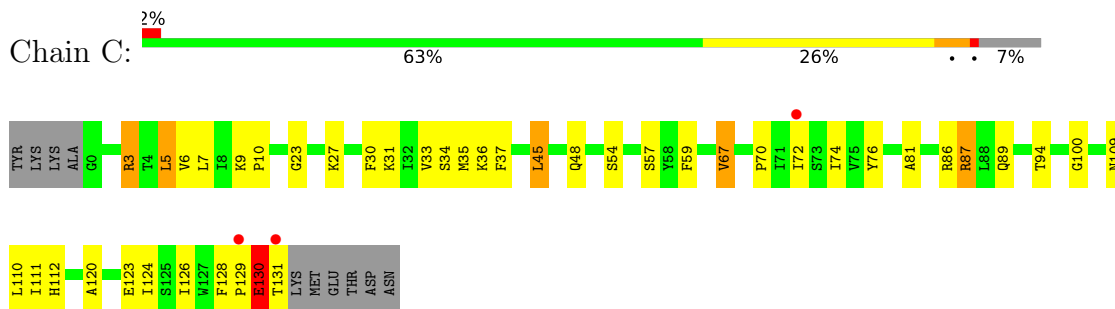
- Molecule 1: Nucleoside diphosphate kinase



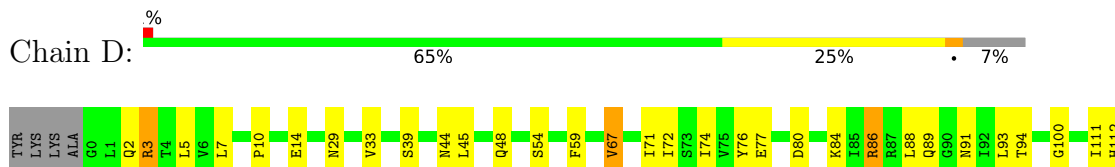
- Molecule 1: Nucleoside diphosphate kinase



- Molecule 1: Nucleoside diphosphate kinase



- Molecule 1: Nucleoside diphosphate kinase







- Molecule 1: Nucleoside diphosphate kinase



- Molecule 1: Nucleoside diphosphate kinase



## 4 Data and refinement statistics

Property	Value	Source
Space group	C 2 2 21	Depositor
Cell constants a, b, c, $\alpha$ , $\beta$ , $\gamma$	80.69Å 151.04Å 184.87Å 90.00° 90.00° 90.00°	Depositor
Resolution (Å)	28.53 – 2.60 28.53 – 2.60	Depositor EDS
% Data completeness (in resolution range)	99.8 (28.53-2.60) 99.8 (28.53-2.60)	Depositor EDS
$R_{merge}$	(Not available)	Depositor
$R_{sym}$	0.10	Depositor
$\langle I/\sigma(I) \rangle$ <sup>1</sup>	3.02 (at 2.61Å)	Xtriage
Refinement program	PHENIX (phenix.refine)	Depositor
R, $R_{free}$	0.199 , 0.247 0.197 , 0.243	Depositor DCC
$R_{free}$ test set	1753 reflections (5.01%)	wwPDB-VP
Wilson B-factor (Å <sup>2</sup> )	63.0	Xtriage
Anisotropy	0.023	Xtriage
Bulk solvent $k_{sol}$ (e/Å <sup>3</sup> ), $B_{sol}$ (Å <sup>2</sup> )	0.33 , 46.9	EDS
L-test for twinning <sup>2</sup>	$\langle  L  \rangle = 0.48$ , $\langle L^2 \rangle = 0.32$	Xtriage
Estimated twinning fraction	No twinning to report.	Xtriage
$F_o, F_c$ correlation	0.95	EDS
Total number of atoms	6485	wwPDB-VP
Average B, all atoms (Å <sup>2</sup> )	63.0	wwPDB-VP

Xtriage's analysis on translational NCS is as follows: *The largest off-origin peak in the Patterson function is 3.57% of the height of the origin peak. No significant pseudotranslation is detected.*

<sup>1</sup>Intensities estimated from amplitudes.

<sup>2</sup>Theoretical values of  $\langle |L| \rangle$ ,  $\langle L^2 \rangle$  for acentric reflections are 0.5, 0.333 respectively for untwinned datasets, and 0.375, 0.2 for perfectly twinned datasets.

## 5 Model quality [i](#)

### 5.1 Standard geometry [i](#)

Bond lengths and bond angles in the following residue types are not validated in this section: TYD, MG

The Z score for a bond length (or angle) is the number of standard deviations the observed value is removed from the expected value. A bond length (or angle) with  $|Z| > 5$  is considered an outlier worth inspection. RMSZ is the root-mean-square of all Z scores of the bond lengths (or angles).

Mol	Chain	Bond lengths		Bond angles	
		RMSZ	# Z  >5	RMSZ	# Z  >5
1	A	0.38	0/1078	0.55	0/1455
1	B	0.36	0/1062	0.59	0/1433
1	C	0.38	0/1073	0.57	0/1448
1	D	0.39	0/1073	0.56	0/1448
1	E	0.36	0/1073	0.56	0/1448
1	F	0.38	0/1057	0.54	0/1426
All	All	0.37	0/6416	0.56	0/8658

There are no bond length outliers.

There are no bond angle outliers.

There are no chirality outliers.

There are no planarity outliers.

### 5.2 Too-close contacts [i](#)

In the following table, the Non-H and H(model) columns list the number of non-hydrogen atoms and hydrogen atoms in the chain respectively. The H(added) column lists the number of hydrogen atoms added and optimized by MolProbity. The Clashes column lists the number of clashes within the asymmetric unit, whereas Symm-Clashes lists symmetry-related clashes.

Mol	Chain	Non-H	H(model)	H(added)	Clashes	Symm-Clashes
1	A	1058	0	1050	21	0
1	B	1042	0	1035	48	0
1	C	1053	0	1045	29	0
1	D	1053	0	1045	23	0
1	E	1053	0	1045	19	0
1	F	1037	0	1032	39	0
2	A	1	0	0	0	0

*Continued on next page...*

*Continued from previous page...*

Mol	Chain	Non-H	H(model)	H(added)	Clashes	Symm-Clashes
2	B	1	0	0	0	0
2	C	1	0	0	0	0
2	D	1	0	0	0	0
2	E	1	0	0	0	0
2	F	1	0	0	0	0
3	A	25	0	13	2	0
3	B	25	0	13	3	0
3	C	25	0	13	2	0
3	D	25	0	13	2	0
3	E	25	0	13	0	0
3	F	25	0	13	3	0
4	A	5	0	0	0	0
4	B	4	0	0	1	0
4	C	10	0	0	0	0
4	D	7	0	0	0	0
4	E	5	0	0	0	0
4	F	2	0	0	0	0
All	All	6485	0	6330	185	0

The all-atom clashscore is defined as the number of clashes found per 1000 atoms (including hydrogen atoms). The all-atom clashscore for this structure is 14.

All (185) close contacts within the same asymmetric unit are listed below, sorted by their clash magnitude.

Atom-1	Atom-2	Interatomic distance (Å)	Clash overlap (Å)
1:B:87:ARG:HH11	1:B:87:ARG:HG2	1.06	1.13
1:C:87:ARG:HH11	1:C:87:ARG:HG3	1.18	1.05
1:F:106:ILE:H	1:F:106:ILE:HD13	1.32	0.94
1:B:87:ARG:HG2	1:B:87:ARG:NH1	1.86	0.89
1:B:48:GLN:O	1:B:51:LYS:HB2	1.75	0.86
1:C:87:ARG:HH11	1:C:87:ARG:CG	1.87	0.86
1:F:87:ARG:HG3	1:F:87:ARG:HH11	1.41	0.85
1:F:35:MET:HE2	1:F:72:ILE:HG21	1.58	0.85
1:C:87:ARG:HG3	1:C:87:ARG:NH1	1.88	0.84
1:B:87:ARG:HH11	1:B:87:ARG:CG	1.90	0.83
1:F:43:ARG:NH2	1:F:64:ASP:OD1	2.14	0.81
1:B:120:ALA:O	1:B:124:ILE:HG13	1.81	0.80
1:E:35:MET:HG3	1:E:74:ILE:HG12	1.62	0.79
1:E:120:ALA:O	1:E:124:ILE:HG13	1.84	0.78
1:B:35:MET:HE2	1:B:74:ILE:HG12	1.67	0.76
1:B:117:GLU:HG3	4:B:141:HOH:O	1.87	0.74

*Continued on next page...*

*Continued from previous page...*

Atom-1	Atom-2	Interatomic distance (Å)	Clash overlap (Å)
1:A:2:GLN:NE2	1:A:82:ILE:HD12	2.07	0.70
1:E:43:ARG:NH2	1:E:64:ASP:OD1	2.24	0.70
1:F:66:MET:HE3	1:F:71:ILE:HD11	1.73	0.69
1:E:5:LEU:HD22	1:E:123:GLU:HB3	1.74	0.69
1:F:66:MET:CE	1:F:71:ILE:HD11	2.23	0.69
1:B:54:SER:HA	1:B:59:PHE:CG	2.32	0.65
1:B:94:THR:O	1:B:100:GLY:HA3	1.97	0.65
1:C:35:MET:HE2	1:C:72:ILE:HG21	1.80	0.63
1:A:129:PRO:C	1:A:131:THR:H	2.00	0.62
1:A:5:LEU:HD22	1:A:123:GLU:HB3	1.79	0.62
1:A:94:THR:O	1:A:100:GLY:HA3	1.97	0.62
1:C:129:PRO:O	1:C:131:THR:N	2.24	0.62
1:B:7:LEU:HD11	1:B:49:HIS:CE1	2.35	0.61
1:F:106:ILE:HD13	1:F:106:ILE:N	2.10	0.60
1:B:117:GLU:O	1:B:120:ALA:HB3	2.02	0.59
1:D:80:ASP:OD1	1:D:84:LYS:HE3	2.02	0.59
1:D:5:LEU:HD22	1:D:123:GLU:HB3	1.83	0.59
1:C:35:MET:HG3	1:C:74:ILE:HG12	1.85	0.58
1:A:43:ARG:NH2	1:A:64:ASP:OD1	2.31	0.58
1:B:54:SER:HA	1:B:59:PHE:CD2	2.39	0.57
1:E:130:GLU:HA	1:E:130:GLU:OE2	2.03	0.57
1:A:122:ASP:O	1:A:125:SER:HB2	2.05	0.56
3:C:138:TYD:H6	3:C:138:TYD:O5'	2.05	0.56
1:F:46:ILE:HD12	1:F:66:MET:HB3	1.88	0.56
1:D:89:GLN:HG3	1:D:111:ILE:HG23	1.87	0.56
3:D:138:TYD:O2B	3:D:138:TYD:O1A	2.24	0.56
1:C:120:ALA:O	1:C:124:ILE:HG13	2.06	0.55
1:C:130:GLU:O	1:C:131:THR:HB	2.07	0.54
1:C:87:ARG:CG	1:C:87:ARG:NH1	2.57	0.54
1:D:3:ARG:HD3	1:D:77:GLU:OE1	2.08	0.54
1:B:7:LEU:HB2	1:B:112:HIS:HB3	1.89	0.54
1:B:123:GLU:O	1:B:127:TRP:HD1	1.91	0.54
1:E:4:THR:HG21	1:E:85:ILE:HD12	1.88	0.54
1:D:72:ILE:HG22	1:D:74:ILE:HG13	1.90	0.54
1:C:72:ILE:HG22	1:C:74:ILE:HG13	1.88	0.54
1:B:58:TYR:O	1:B:59:PHE:C	2.46	0.54
1:B:50:TYR:O	1:B:52:GLU:N	2.41	0.54
1:D:71:ILE:C	1:D:71:ILE:HD12	2.28	0.54
1:B:8:ILE:HD12	1:B:74:ILE:HD11	1.90	0.53
1:C:30:PHE:CE2	1:C:81:ALA:HA	2.42	0.53
1:B:35:MET:HA	1:B:73:SER:O	2.09	0.53

*Continued on next page...*

*Continued from previous page...*

Atom-1	Atom-2	Interatomic distance (Å)	Clash overlap (Å)
1:D:91:ASN:OD1	1:D:93:LEU:HB2	2.08	0.53
1:B:50:TYR:O	1:B:53:HIS:N	2.40	0.52
1:C:3:ARG:CZ	1:C:33:VAL:HG11	2.39	0.52
1:C:5:LEU:HG	1:C:6:VAL:N	2.24	0.52
1:B:13:PHE:HZ	1:B:72:ILE:HG13	1.74	0.52
1:F:86:ARG:HG3	1:F:115:ASP:HA	1.90	0.52
3:A:138:TYD:O2B	3:A:138:TYD:O1A	2.26	0.52
1:B:55:GLU:HA	1:B:55:GLU:OE2	2.09	0.52
1:A:13:PHE:HZ	1:A:72:ILE:HG13	1.75	0.51
1:E:7:LEU:HB2	1:E:112:HIS:HB3	1.92	0.51
1:F:106:ILE:H	1:F:106:ILE:CD1	2.10	0.51
1:D:54:SER:HA	1:D:59:PHE:CD2	2.46	0.51
1:F:40:LYS:HE2	1:F:67:VAL:HG13	1.92	0.51
1:F:87:ARG:HH11	1:F:87:ARG:CG	2.15	0.51
1:F:30:PHE:CE2	1:F:81:ALA:HA	2.45	0.51
1:B:83:SER:O	1:B:86:ARG:HB3	2.11	0.50
1:F:54:SER:HA	1:F:59:PHE:CD2	2.46	0.50
1:F:87:ARG:CG	1:F:87:ARG:NH1	2.74	0.50
1:B:2:GLN:OE1	1:B:82:ILE:HB	2.12	0.50
1:B:52:GLU:O	1:B:52:GLU:HG3	2.11	0.49
1:B:88:LEU:O	1:B:98:ILE:HD12	2.12	0.49
1:E:89:GLN:HG3	1:E:111:ILE:HG23	1.95	0.49
1:A:129:PRO:C	1:A:131:THR:N	2.66	0.49
1:B:7:LEU:CD1	1:B:49:HIS:CE1	2.96	0.49
1:B:7:LEU:HD22	1:B:71:ILE:CD1	2.43	0.49
1:E:28:LYS:O	1:E:28:LYS:HG3	2.13	0.49
1:A:28:LYS:HG2	1:A:30:PHE:HE1	1.78	0.48
1:C:89:GLN:HG3	1:C:111:ILE:HG23	1.95	0.48
1:B:7:LEU:HD11	1:B:49:HIS:ND1	2.29	0.48
1:B:89:GLN:HG3	1:B:111:ILE:HG23	1.95	0.48
1:F:92:ILE:HD11	1:F:103:ALA:CB	2.44	0.48
1:A:129:PRO:O	1:A:131:THR:N	2.47	0.48
1:C:36:LYS:HE3	1:C:128:PHE:CD1	2.48	0.48
1:B:122:ASP:O	1:B:126:ILE:HG13	2.13	0.48
1:F:87:ARG:HG3	1:F:87:ARG:NH1	2.16	0.48
1:B:92:ILE:HD12	1:B:103:ALA:O	2.14	0.48
1:F:89:GLN:HG3	1:F:111:ILE:HG23	1.96	0.48
1:A:65:PHE:O	1:A:68:SER:OG	2.25	0.48
1:D:86:ARG:HG3	1:D:115:ASP:HA	1.96	0.47
1:B:30:PHE:CE2	1:B:81:ALA:HA	2.49	0.47
1:D:122:ASP:O	1:D:126:ILE:HG13	2.14	0.47

*Continued on next page...*

*Continued from previous page...*

Atom-1	Atom-2	Interatomic distance (Å)	Clash overlap (Å)
1:B:86:ARG:NH1	1:B:89:GLN:HE22	2.12	0.47
1:F:4:THR:HG21	1:F:85:ILE:HD12	1.96	0.47
1:F:93:LEU:O	1:F:95:PRO:HD3	2.13	0.47
1:A:64:ASP:O	1:A:67:VAL:HG22	2.15	0.47
1:B:50:TYR:HD2	1:B:53:HIS:HD2	1.63	0.47
1:F:13:PHE:HZ	1:F:72:ILE:HG13	1.80	0.47
1:F:53:HIS:CE1	3:F:138:TYD:H5'1	2.50	0.47
1:F:82:ILE:O	1:F:86:ARG:HB2	2.14	0.47
1:D:2:GLN:O	1:D:77:GLU:HA	2.15	0.47
1:D:124:ILE:O	1:D:128:PHE:HB2	2.15	0.47
1:B:62:ASN:OD1	3:B:138:TYD:H1'	2.15	0.47
1:C:3:ARG:HA	1:C:76:TYR:O	2.15	0.47
1:E:88:LEU:HD12	1:E:88:LEU:HA	1.82	0.46
3:A:138:TYD:H6	3:A:138:TYD:O5'	2.14	0.46
1:D:3:ARG:HA	1:D:76:TYR:O	2.16	0.46
1:F:5:LEU:HG	1:F:6:VAL:N	2.31	0.45
1:F:2:GLN:O	1:F:77:GLU:HA	2.17	0.45
1:C:23:GLY:O	1:C:27:LYS:HG3	2.17	0.45
3:C:138:TYD:O2B	3:C:138:TYD:O1A	2.35	0.45
1:B:6:VAL:HA	1:B:112:HIS:O	2.16	0.45
1:C:109:ASN:O	1:C:110:LEU:HB2	2.16	0.45
1:E:4:THR:CG2	1:E:85:ILE:HD12	2.47	0.45
1:F:106:ILE:O	3:F:138:TYD:H2'2	2.16	0.45
3:B:138:TYD:O2B	3:B:138:TYD:O1A	2.35	0.44
1:F:6:VAL:HA	1:F:112:HIS:O	2.18	0.44
1:A:54:SER:HA	1:A:59:PHE:CD2	2.53	0.44
1:E:3:ARG:HD3	1:E:77:GLU:OE1	2.17	0.44
1:F:117:GLU:O	1:F:121:VAL:HG22	2.17	0.44
1:B:67:VAL:O	1:B:67:VAL:HG13	2.16	0.44
1:D:10:PRO:HD3	1:D:71:ILE:HG22	1.99	0.44
1:A:3:ARG:HG2	1:A:77:GLU:HB2	1.99	0.44
3:F:138:TYD:O2B	3:F:138:TYD:O1A	2.36	0.44
1:D:130:GLU:O	1:D:130:GLU:HG2	2.18	0.44
1:A:88:LEU:HD12	1:A:88:LEU:HA	1.84	0.44
1:B:38:TRP:HE1	1:B:127:TRP:HE3	1.64	0.44
1:C:54:SER:HA	1:C:59:PHE:CD2	2.53	0.44
1:F:43:ARG:HD3	1:F:47:GLU:OE2	2.18	0.44
1:C:129:PRO:C	1:C:131:THR:H	2.13	0.43
1:F:94:THR:O	1:F:100:GLY:HA3	2.17	0.43
1:B:121:VAL:O	1:B:125:SER:OG	2.36	0.43
1:C:5:LEU:HD22	1:C:123:GLU:HB3	1.99	0.43

*Continued on next page...*

*Continued from previous page...*

Atom-1	Atom-2	Interatomic distance (Å)	Clash overlap (Å)
1:B:29:ASN:HD22	1:B:29:ASN:HA	1.62	0.43
1:B:35:MET:HB2	1:B:74:ILE:HG23	2.00	0.43
1:B:123:GLU:O	1:B:127:TRP:CD1	2.70	0.43
1:F:7:LEU:HA	1:F:72:ILE:O	2.18	0.43
1:A:80:ASP:OD2	1:A:84:LYS:HE3	2.18	0.43
1:E:94:THR:HA	1:E:95:PRO:HD3	1.84	0.43
1:D:86:ARG:HH22	3:D:138:TYD:PB	2.42	0.43
1:A:28:LYS:HG2	1:A:30:PHE:CE1	2.54	0.43
1:A:91:ASN:OD1	1:A:93:LEU:HB2	2.19	0.43
1:A:7:LEU:HB2	1:A:112:HIS:HB3	2.00	0.43
1:B:92:ILE:CG2	1:D:84:LYS:NZ	2.82	0.43
1:C:31:LYS:O	1:C:76:TYR:HA	2.19	0.43
1:D:48:GLN:HB3	1:D:126:ILE:HD13	2.00	0.43
1:F:92:ILE:HD11	1:F:103:ALA:C	2.39	0.42
1:B:53:HIS:C	1:B:55:GLU:N	2.72	0.42
1:C:9:LYS:HB3	1:C:10:PRO:CD	2.49	0.42
1:B:106:ILE:O	3:B:138:TYD:H2'2	2.20	0.42
1:C:94:THR:O	1:C:100:GLY:HA3	2.20	0.42
1:D:120:ALA:O	1:D:124:ILE:HG13	2.20	0.42
1:E:91:ASN:OD1	1:E:93:LEU:HB2	2.20	0.42
1:F:66:MET:HE2	1:F:71:ILE:HD11	2.01	0.42
1:E:28:LYS:HG2	1:E:30:PHE:HE1	1.83	0.42
1:E:72:ILE:HG22	1:E:74:ILE:HG13	2.01	0.42
1:C:67:VAL:O	1:C:67:VAL:HG13	2.19	0.42
1:F:10:PRO:HG2	1:F:65:PHE:O	2.18	0.42
1:B:38:TRP:NE1	1:B:127:TRP:HE3	2.17	0.42
1:B:85:ILE:O	1:B:85:ILE:HG22	2.18	0.42
1:F:119:SER:O	1:F:123:GLU:HG3	2.20	0.42
1:F:65:PHE:CE2	1:F:108:GLU:HG2	2.55	0.41
1:D:7:LEU:HB2	1:D:112:HIS:HB3	2.02	0.41
1:C:48:GLN:HB3	1:C:126:ILE:HD13	2.02	0.41
1:D:88:LEU:HD12	1:D:88:LEU:HA	1.86	0.41
1:C:7:LEU:HB2	1:C:112:HIS:HB3	2.02	0.41
1:A:30:PHE:HE2	1:A:81:ALA:HA	1.86	0.41
1:F:38:TRP:O	1:F:70:PRO:HA	2.21	0.41
1:D:67:VAL:O	1:D:67:VAL:HG13	2.20	0.40
1:C:37:PHE:CE1	1:C:70:PRO:HB3	2.56	0.40
1:E:41:ALA:O	1:E:67:VAL:HG23	2.21	0.40
1:F:38:TRP:CD1	1:F:71:ILE:HG22	2.56	0.40
1:A:71:ILE:HD11	1:A:127:TRP:CH2	2.56	0.40
1:B:53:HIS:C	1:B:55:GLU:H	2.24	0.40

*Continued on next page...*



Continued from previous page...

Atom-1	Atom-2	Interatomic distance (Å)	Clash overlap (Å)
1:D:94:THR:O	1:D:100:GLY:HA3	2.21	0.40
1:E:13:PHE:HZ	1:E:72:ILE:HG13	1.85	0.40
1:E:21:ILE:HG23	1:E:98:ILE:HD13	2.02	0.40
1:C:45:LEU:HD12	1:C:45:LEU:HA	1.88	0.40
1:F:65:PHE:C	1:F:67:VAL:H	2.25	0.40

There are no symmetry-related clashes.

## 5.3 Torsion angles [i](#)

### 5.3.1 Protein backbone [i](#)

In the following table, the Percentiles column shows the percent Ramachandran outliers of the chain as a percentile score with respect to all X-ray entries followed by that with respect to entries of similar resolution.

The Analysed column shows the number of residues for which the backbone conformation was analysed, and the total number of residues.

Mol	Chain	Analysed	Favoured	Allowed	Outliers	Percentiles	
1	A	131/142 (92%)	123 (94%)	7 (5%)	1 (1%)	19	39
1	B	128/142 (90%)	115 (90%)	11 (9%)	2 (2%)	9	19
1	C	130/142 (92%)	121 (93%)	8 (6%)	1 (1%)	19	39
1	D	130/142 (92%)	122 (94%)	8 (6%)	0	100	100
1	E	130/142 (92%)	124 (95%)	6 (5%)	0	100	100
1	F	128/142 (90%)	118 (92%)	10 (8%)	0	100	100
All	All	777/852 (91%)	723 (93%)	50 (6%)	4 (0%)	29	52

All (4) Ramachandran outliers are listed below:

Mol	Chain	Res	Type
1	B	51	LYS
1	A	130	GLU
1	C	130	GLU
1	B	59	PHE

### 5.3.2 Protein sidechains ⓘ

In the following table, the Percentiles column shows the percent sidechain outliers of the chain as a percentile score with respect to all X-ray entries followed by that with respect to entries of similar resolution.

The Analysed column shows the number of residues for which the sidechain conformation was analysed, and the total number of residues.

Mol	Chain	Analysed	Rotameric	Outliers	Percentiles	
1	A	117/126 (93%)	111 (95%)	6 (5%)	24	46
1	B	116/126 (92%)	103 (89%)	13 (11%)	6	10
1	C	117/126 (93%)	108 (92%)	9 (8%)	13	25
1	D	117/126 (93%)	108 (92%)	9 (8%)	13	25
1	E	117/126 (93%)	106 (91%)	11 (9%)	8	17
1	F	115/126 (91%)	104 (90%)	11 (10%)	8	16
All	All	699/756 (92%)	640 (92%)	59 (8%)	11	21

All (59) residues with a non-rotameric sidechain are listed below:

Mol	Chain	Res	Type
1	A	29	ASN
1	A	34	SER
1	A	86	ARG
1	A	94	THR
1	A	106	ILE
1	A	125	SER
1	B	3	ARG
1	B	5	LEU
1	B	29	ASN
1	B	48	GLN
1	B	62	ASN
1	B	67	VAL
1	B	71	ILE
1	B	87	ARG
1	B	94	THR
1	B	118	ASP
1	B	119	SER
1	B	121	VAL
1	B	125	SER
1	C	3	ARG
1	C	5	LEU
1	C	34	SER

*Continued on next page...*

*Continued from previous page...*

Mol	Chain	Res	Type
1	C	45	LEU
1	C	57	SER
1	C	67	VAL
1	C	86	ARG
1	C	87	ARG
1	C	130	GLU
1	D	3	ARG
1	D	14	GLU
1	D	29	ASN
1	D	33	VAL
1	D	39	SER
1	D	44	ASN
1	D	45	LEU
1	D	67	VAL
1	D	86	ARG
1	E	2	GLN
1	E	3	ARG
1	E	8	ILE
1	E	29	ASN
1	E	33	VAL
1	E	39	SER
1	E	52	GLU
1	E	67	VAL
1	E	83	SER
1	E	86	ARG
1	E	106	ILE
1	F	33	VAL
1	F	52	GLU
1	F	67	VAL
1	F	71	ILE
1	F	86	ARG
1	F	87	ARG
1	F	88	LEU
1	F	92	ILE
1	F	94	THR
1	F	106	ILE
1	F	121	VAL

Sometimes sidechains can be flipped to improve hydrogen bonding and reduce clashes. All (15) such sidechains are listed below:

Mol	Chain	Res	Type
1	A	29	ASN

*Continued on next page...*

*Continued from previous page...*

Mol	Chain	Res	Type
1	A	62	ASN
1	B	29	ASN
1	B	48	GLN
1	B	53	HIS
1	B	112	HIS
1	C	62	ASN
1	D	29	ASN
1	D	44	ASN
1	D	89	GLN
1	E	29	ASN
1	E	89	GLN
1	F	29	ASN
1	F	44	ASN
1	F	48	GLN

### 5.3.3 RNA [i](#)

There are no RNA molecules in this entry.

## 5.4 Non-standard residues in protein, DNA, RNA chains [i](#)

There are no non-standard protein/DNA/RNA residues in this entry.

## 5.5 Carbohydrates [i](#)

There are no monosaccharides in this entry.

## 5.6 Ligand geometry [i](#)

Of 12 ligands modelled in this entry, 6 are monoatomic - leaving 6 for Mogul analysis.

In the following table, the Counts columns list the number of bonds (or angles) for which Mogul statistics could be retrieved, the number of bonds (or angles) that are observed in the model and the number of bonds (or angles) that are defined in the Chemical Component Dictionary. The Link column lists molecule types, if any, to which the group is linked. The Z score for a bond length (or angle) is the number of standard deviations the observed value is removed from the expected value. A bond length (or angle) with  $|Z| > 2$  is considered an outlier worth inspection. RMSZ is the root-mean-square of all Z scores of the bond lengths (or angles).

Mol	Type	Chain	Res	Link	Bond lengths			Bond angles		
					Counts	RMSZ	# Z  > 2	Counts	RMSZ	# Z  > 2
3	TYD	C	138	2	23,26,26	2.55	3 (13%)	33,40,40	2.27	11 (33%)
3	TYD	D	138	2	23,26,26	2.41	3 (13%)	33,40,40	2.19	10 (30%)
3	TYD	E	138	2	23,26,26	2.46	4 (17%)	33,40,40	2.27	12 (36%)
3	TYD	F	138	2	23,26,26	2.38	3 (13%)	33,40,40	2.23	11 (33%)
3	TYD	B	138	2	23,26,26	2.53	3 (13%)	33,40,40	2.03	9 (27%)
3	TYD	A	138	2	23,26,26	2.53	5 (21%)	33,40,40	2.24	9 (27%)

In the following table, the Chirals column lists the number of chiral outliers, the number of chiral centers analysed, the number of these observed in the model and the number defined in the Chemical Component Dictionary. Similar counts are reported in the Torsion and Rings columns. '-' means no outliers of that kind were identified.

Mol	Type	Chain	Res	Link	Chirals	Torsions	Rings
3	TYD	C	138	2	-	4/16/28/28	0/2/2/2
3	TYD	D	138	2	-	3/16/28/28	0/2/2/2
3	TYD	E	138	2	-	2/16/28/28	0/2/2/2
3	TYD	F	138	2	-	4/16/28/28	0/2/2/2
3	TYD	B	138	2	-	3/16/28/28	0/2/2/2
3	TYD	A	138	2	-	5/16/28/28	0/2/2/2

All (21) bond length outliers are listed below:

Mol	Chain	Res	Type	Atoms	Z	Observed(Å)	Ideal(Å)
3	C	138	TYD	C6-N1	-9.93	1.34	1.46
3	A	138	TYD	C6-N1	-9.90	1.34	1.46
3	E	138	TYD	C6-N1	-9.61	1.34	1.46
3	D	138	TYD	C6-N1	-9.59	1.34	1.46
3	B	138	TYD	C6-N1	-9.55	1.34	1.46
3	F	138	TYD	C6-N1	-9.36	1.35	1.46
3	B	138	TYD	C2-N1	4.93	1.42	1.35
3	A	138	TYD	C2-N1	4.22	1.41	1.35
3	B	138	TYD	C6-C5	-4.06	1.39	1.51
3	C	138	TYD	C6-C5	-4.05	1.39	1.51
3	E	138	TYD	C2-N1	4.04	1.41	1.35
3	C	138	TYD	C2-N1	4.01	1.41	1.35
3	E	138	TYD	C6-C5	-3.86	1.39	1.51
3	D	138	TYD	C6-C5	-3.85	1.39	1.51
3	A	138	TYD	C6-C5	-3.80	1.39	1.51
3	F	138	TYD	C6-C5	-3.74	1.40	1.51

*Continued on next page...*

*Continued from previous page...*

Mol	Chain	Res	Type	Atoms	Z	Observed(Å)	Ideal(Å)
3	D	138	TYD	C2-N1	3.65	1.40	1.35
3	F	138	TYD	C2-N1	3.58	1.40	1.35
3	A	138	TYD	C2-N3	-2.29	1.33	1.38
3	E	138	TYD	C2-N3	-2.07	1.34	1.38
3	A	138	TYD	C4-N3	-2.06	1.33	1.37

All (62) bond angle outliers are listed below:

Mol	Chain	Res	Type	Atoms	Z	Observed(°)	Ideal(°)
3	C	138	TYD	C2'-C1'-N1	-5.83	108.48	115.61
3	A	138	TYD	C4-N3-C2	-5.59	120.03	126.86
3	D	138	TYD	C2'-C1'-N1	-5.42	108.99	115.61
3	E	138	TYD	C2'-C1'-N1	-5.28	109.15	115.61
3	B	138	TYD	C4-N3-C2	-5.23	120.47	126.86
3	A	138	TYD	C2'-C1'-N1	-5.18	109.28	115.61
3	E	138	TYD	C4-N3-C2	-5.10	120.62	126.86
3	C	138	TYD	C4-N3-C2	-4.93	120.83	126.86
3	A	138	TYD	N3-C2-N1	4.92	121.86	116.65
3	E	138	TYD	N3-C2-N1	4.84	121.77	116.65
3	F	138	TYD	C2'-C1'-N1	-4.82	109.72	115.61
3	A	138	TYD	C5M-C5-C6	4.81	122.61	112.34
3	F	138	TYD	O2-C2-N1	-4.71	117.19	123.11
3	F	138	TYD	C4-N3-C2	-4.70	121.11	126.86
3	D	138	TYD	C4-N3-C2	-4.70	121.11	126.86
3	C	138	TYD	N3-C2-N1	4.54	121.45	116.65
3	F	138	TYD	N3-C2-N1	4.53	121.44	116.65
3	D	138	TYD	O2-C2-N1	-4.45	117.53	123.11
3	D	138	TYD	C5-C6-N1	4.39	119.75	111.11
3	F	138	TYD	C5M-C5-C6	4.35	121.64	112.34
3	C	138	TYD	C5-C6-N1	4.28	119.54	111.11
3	D	138	TYD	N3-C2-N1	4.25	121.14	116.65
3	B	138	TYD	C5-C6-N1	4.22	119.43	111.11
3	F	138	TYD	C5-C6-N1	4.15	119.28	111.11
3	B	138	TYD	N3-C2-N1	4.09	120.98	116.65
3	E	138	TYD	C5M-C5-C6	4.06	121.00	112.34
3	B	138	TYD	C2'-C1'-N1	-4.04	110.67	115.61
3	C	138	TYD	O2-C2-N1	-4.02	118.06	123.11
3	D	138	TYD	C5M-C5-C6	3.97	120.83	112.34
3	E	138	TYD	C5-C6-N1	3.95	118.88	111.11
3	B	138	TYD	C5M-C5-C6	3.88	120.64	112.34
3	C	138	TYD	C5M-C5-C6	3.88	120.62	112.34
3	E	138	TYD	O2-C2-N1	-3.71	118.45	123.11

*Continued on next page...*

*Continued from previous page...*

Mol	Chain	Res	Type	Atoms	Z	Observed(°)	Ideal(°)
3	A	138	TYD	C5-C6-N1	3.42	117.85	111.11
3	C	138	TYD	O4'-C1'-N1	3.32	112.64	108.41
3	D	138	TYD	PA-O3A-PB	-3.16	121.97	132.83
3	A	138	TYD	O2-C2-N1	-3.07	119.25	123.11
3	A	138	TYD	PA-O3A-PB	-3.07	122.30	132.83
3	B	138	TYD	O2-C2-N1	-2.84	119.54	123.11
3	E	138	TYD	O4'-C1'-N1	2.80	111.98	108.41
3	E	138	TYD	O2A-PA-O1A	2.69	125.55	112.24
3	C	138	TYD	PA-O3A-PB	-2.69	123.61	132.83
3	A	138	TYD	C6-C5-C4	2.68	119.23	111.53
3	F	138	TYD	PA-O3A-PB	-2.60	123.91	132.83
3	E	138	TYD	C6-C5-C4	2.53	118.80	111.53
3	B	138	TYD	PA-O3A-PB	-2.53	124.14	132.83
3	F	138	TYD	O4'-C1'-N1	2.51	111.61	108.41
3	E	138	TYD	PA-O3A-PB	-2.45	124.41	132.83
3	C	138	TYD	C6-C5-C4	2.44	118.54	111.53
3	F	138	TYD	O3B-PB-O2B	2.44	116.97	107.64
3	F	138	TYD	C6-C5-C4	2.43	118.51	111.53
3	F	138	TYD	O2A-PA-O1A	2.39	124.04	112.24
3	B	138	TYD	C6-C5-C4	2.37	118.32	111.53
3	C	138	TYD	O2A-PA-O1A	2.34	123.82	112.24
3	D	138	TYD	C6-C5-C4	2.32	118.20	111.53
3	D	138	TYD	O2A-PA-O1A	2.26	123.40	112.24
3	A	138	TYD	O3B-PB-O2B	2.25	116.24	107.64
3	E	138	TYD	O3B-PB-O2B	2.20	116.05	107.64
3	B	138	TYD	O4'-C1'-N1	2.17	111.18	108.41
3	D	138	TYD	O3B-PB-O2B	2.05	115.46	107.64
3	E	138	TYD	O3B-PB-O3A	-2.04	97.80	104.64
3	C	138	TYD	O3B-PB-O2B	2.00	115.30	107.64

There are no chirality outliers.

All (21) torsion outliers are listed below:

Mol	Chain	Res	Type	Atoms
3	A	138	TYD	PA-O3A-PB-O2B
3	B	138	TYD	PA-O3A-PB-O2B
3	C	138	TYD	PA-O3A-PB-O2B
3	C	138	TYD	PA-O3A-PB-O3B
3	D	138	TYD	PA-O3A-PB-O2B
3	E	138	TYD	PA-O3A-PB-O2B
3	F	138	TYD	PA-O3A-PB-O2B
3	F	138	TYD	PA-O3A-PB-O3B

*Continued on next page...*

*Continued from previous page...*

Mol	Chain	Res	Type	Atoms
3	A	138	TYD	PB-O3A-PA-O1A
3	C	138	TYD	PB-O3A-PA-O1A
3	F	138	TYD	PB-O3A-PA-O1A
3	B	138	TYD	PB-O3A-PA-O1A
3	B	138	TYD	PA-O3A-PB-O1B
3	D	138	TYD	PA-O3A-PB-O1B
3	A	138	TYD	PA-O3A-PB-O3B
3	D	138	TYD	PA-O3A-PB-O3B
3	E	138	TYD	PA-O3A-PB-O3B
3	A	138	TYD	PB-O3A-PA-O2A
3	C	138	TYD	PB-O3A-PA-O2A
3	F	138	TYD	PB-O3A-PA-O2A
3	A	138	TYD	PA-O3A-PB-O1B

There are no ring outliers.

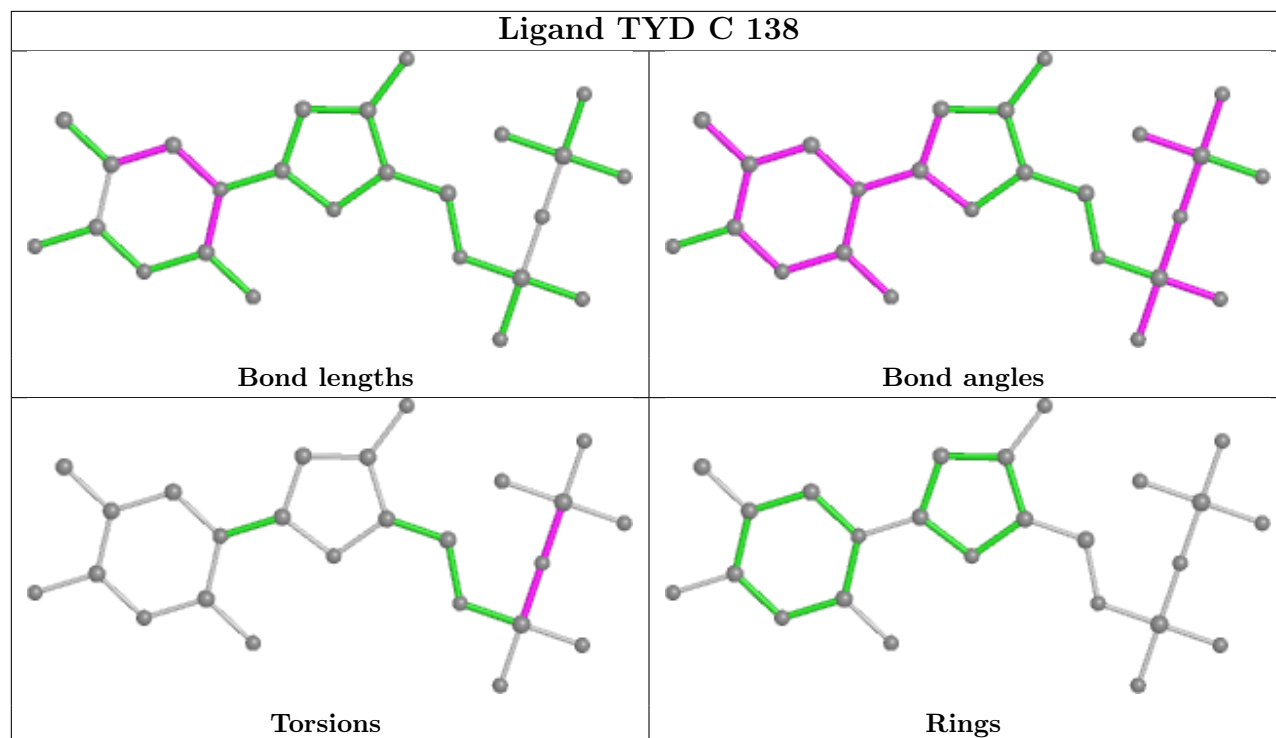
5 monomers are involved in 12 short contacts:

Mol	Chain	Res	Type	Clashes	Symm-Clashes
3	C	138	TYD	2	0
3	D	138	TYD	2	0
3	F	138	TYD	3	0
3	B	138	TYD	3	0
3	A	138	TYD	2	0

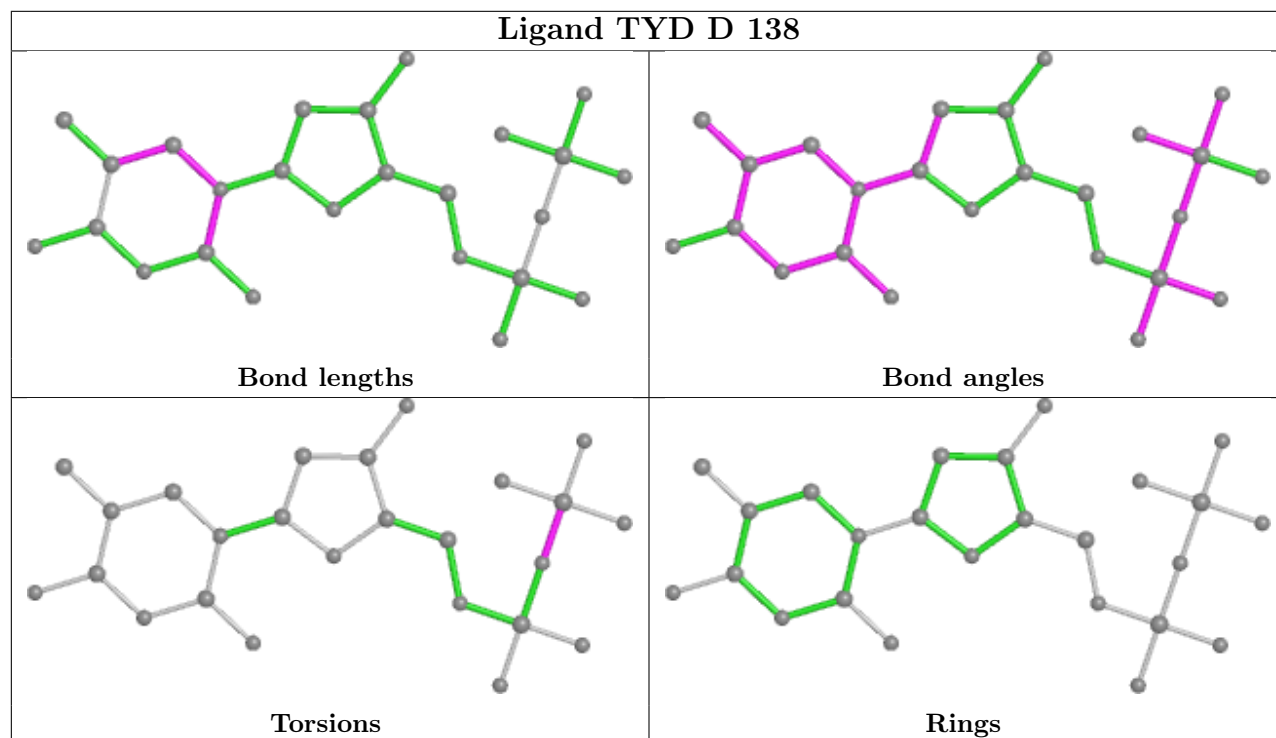
The following is a two-dimensional graphical depiction of Mogul quality analysis of bond lengths, bond angles, torsion angles, and ring geometry for all instances of the Ligand of Interest. In addition, ligands with molecular weight > 250 and outliers as shown on the validation Tables will also be included. For torsion angles, if less than 5% of the Mogul distribution of torsion angles is within 10 degrees of the torsion angle in question, then that torsion angle is considered an outlier. Any bond that is central to one or more torsion angles identified as an outlier by Mogul will be highlighted in the graph. For rings, the root-mean-square deviation (RMSD) between the ring in question and similar rings identified by Mogul is calculated over all ring torsion angles. If the average RMSD is greater than 60 degrees and the minimal RMSD between the ring in question and any Mogul-identified rings is also greater than 60 degrees, then that ring is considered an outlier. The outliers are highlighted in purple. The color gray indicates Mogul did not find sufficient equivalents in the CSD to analyse the geometry.



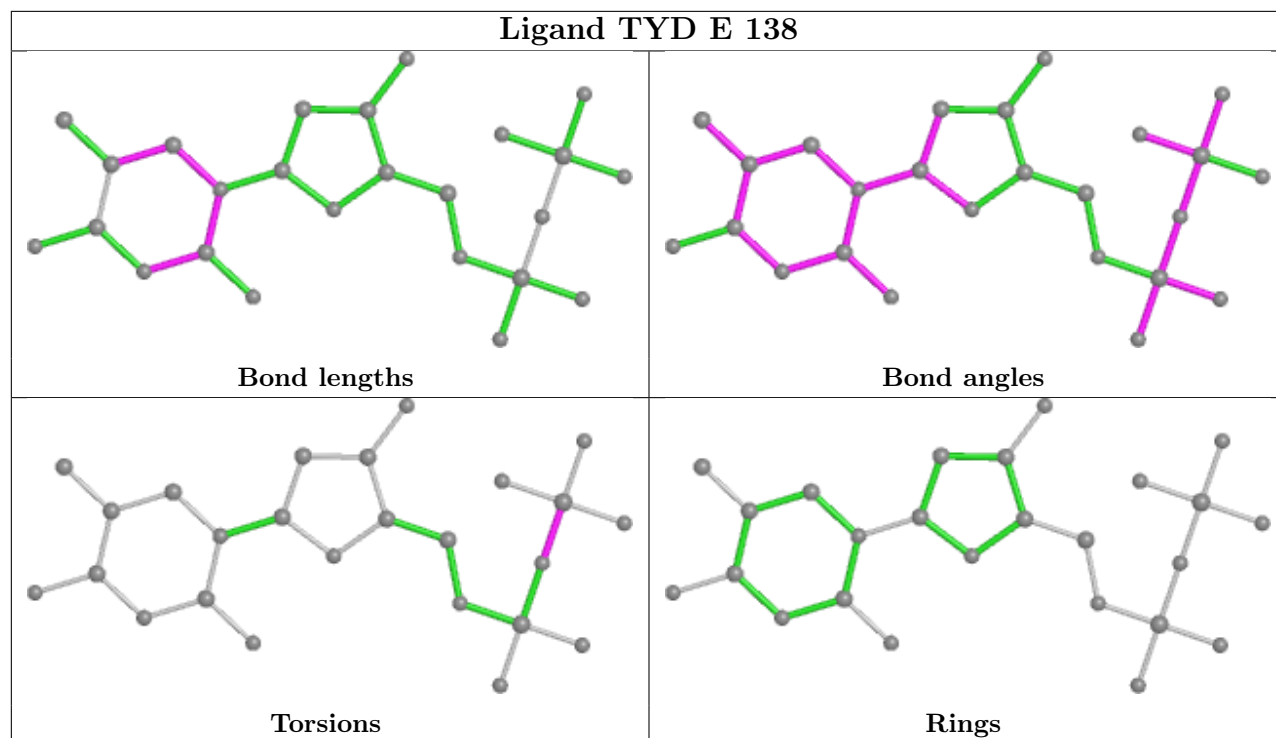
## Ligand TYD C 138



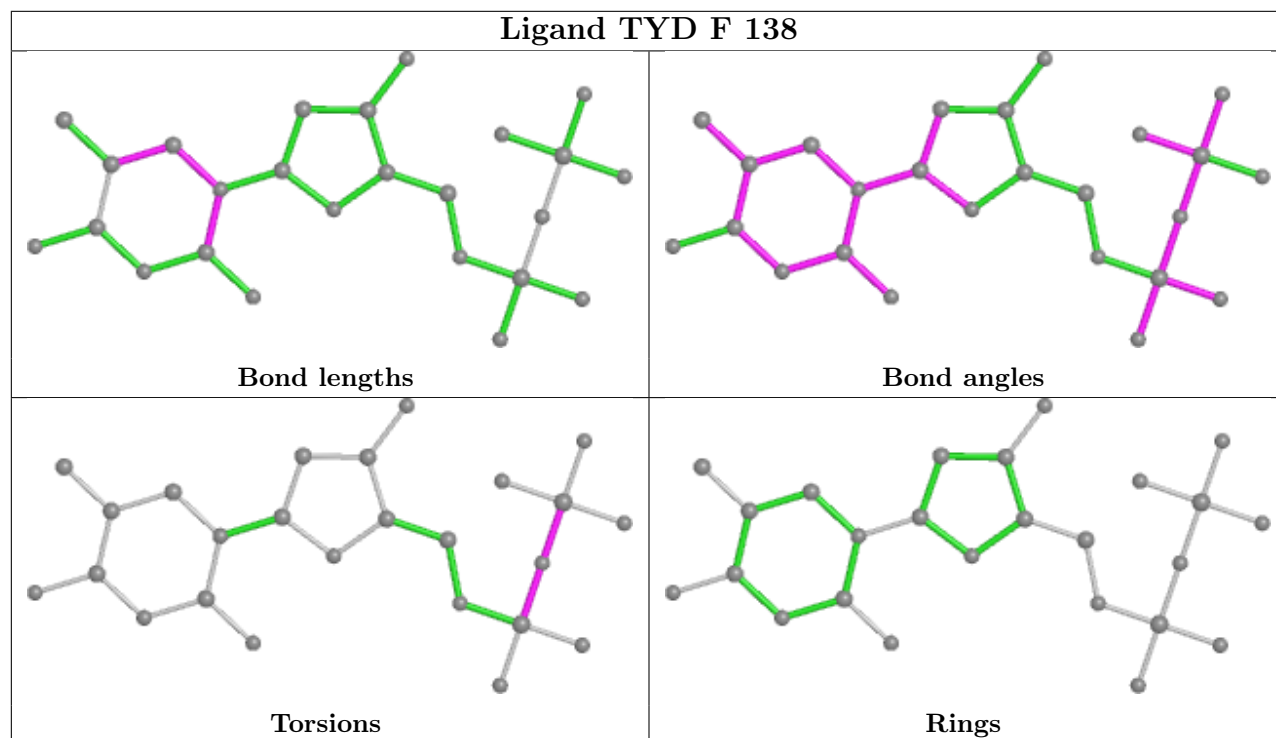
## Ligand TYD D 138

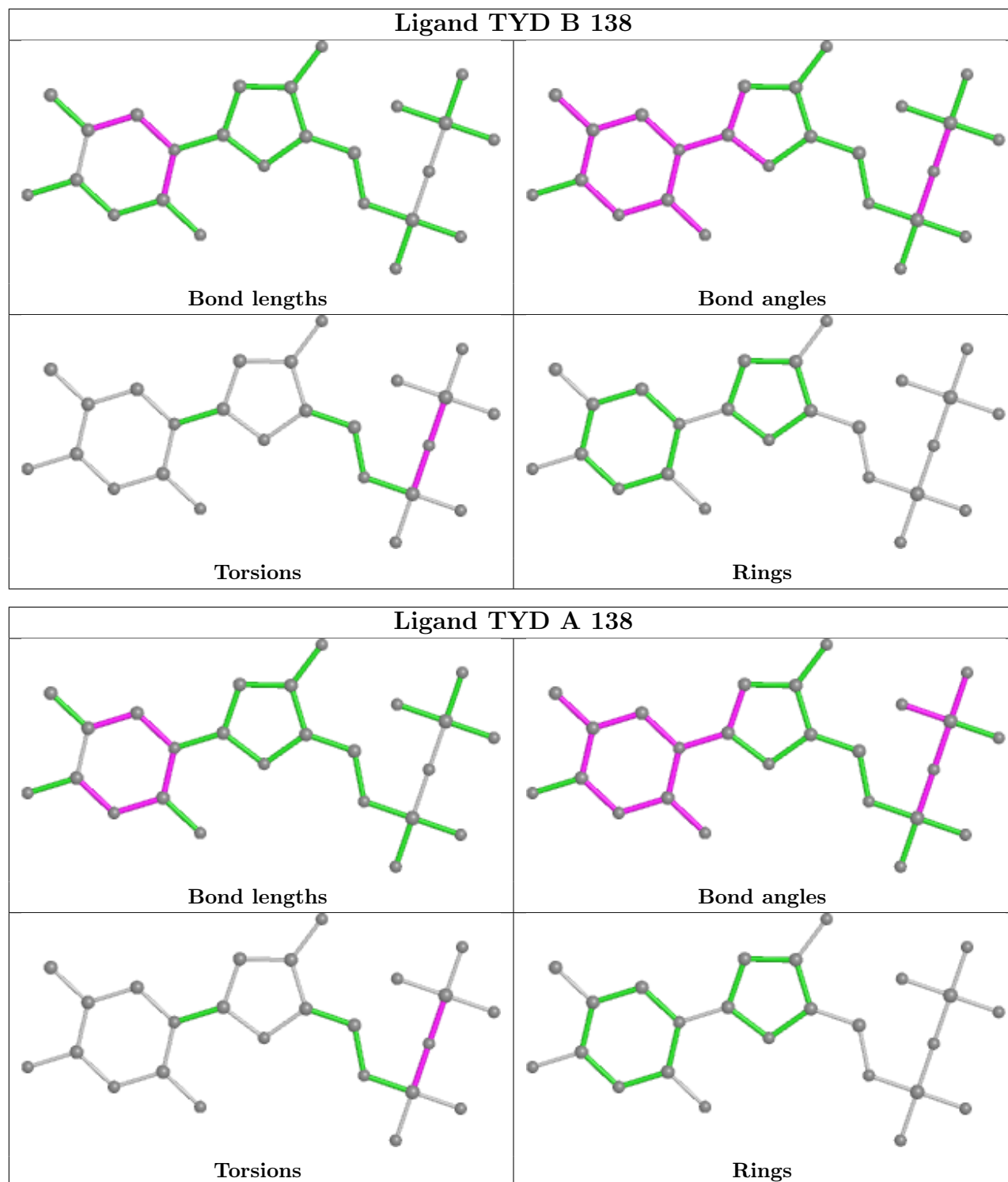


## Ligand TYD E 138



## Ligand TYD F 138





## 5.7 Other polymers [i](#)

There are no such residues in this entry.

## 5.8 Polymer linkage issues ⓘ

There are no chain breaks in this entry.

## 6 Fit of model and data

### 6.1 Protein, DNA and RNA chains

In the following table, the column labelled ‘#RSRZ > 2’ contains the number (and percentage) of RSRZ outliers, followed by percent RSRZ outliers for the chain as percentile scores relative to all X-ray entries and entries of similar resolution. The OWAB column contains the minimum, median, 95<sup>th</sup> percentile and maximum values of the occupancy-weighted average B-factor per residue. The column labelled ‘Q < 0.9’ lists the number of (and percentage) of residues with an average occupancy less than 0.9.

Mol	Chain	Analysed	<RSRZ>	#RSRZ>2	OWAB(Å <sup>2</sup> )	Q<0.9
1	A	133/142 (93%)	-0.27	3 (2%) 60 54	45, 60, 80, 96	0
1	B	130/142 (91%)	-0.19	0 100 100	38, 72, 92, 102	0
1	C	132/142 (92%)	-0.31	3 (2%) 60 54	45, 58, 73, 89	0
1	D	132/142 (92%)	-0.40	2 (1%) 73 70	45, 58, 72, 96	0
1	E	132/142 (92%)	-0.08	7 (5%) 26 20	47, 63, 81, 105	0
1	F	130/142 (91%)	-0.19	3 (2%) 60 54	46, 60, 84, 95	0
All	All	789/852 (92%)	-0.24	18 (2%) 60 54	38, 61, 85, 105	0

All (18) RSRZ outliers are listed below:

Mol	Chain	Res	Type	RSRZ
1	E	131	THR	5.1
1	D	131	THR	5.0
1	E	130	GLU	4.1
1	A	-1	ALA	3.6
1	F	58	TYR	3.4
1	F	0	GLY	3.2
1	C	72	ILE	2.8
1	C	131	THR	2.6
1	E	55	GLU	2.5
1	E	6	VAL	2.4
1	E	0	GLY	2.4
1	E	74	ILE	2.3
1	A	131	THR	2.3
1	E	56	GLN	2.3
1	C	129	PRO	2.2
1	A	55	GLU	2.1
1	D	130	GLU	2.0
1	F	59	PHE	2.0

## 6.2 Non-standard residues in protein, DNA, RNA chains [i](#)

There are no non-standard protein/DNA/RNA residues in this entry.

## 6.3 Carbohydrates [i](#)

There are no monosaccharides in this entry.

## 6.4 Ligands [i](#)

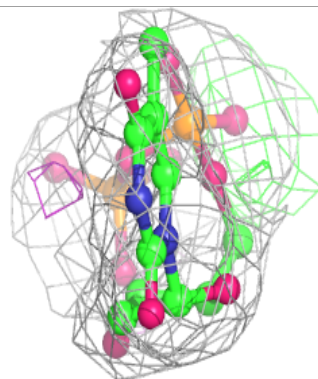
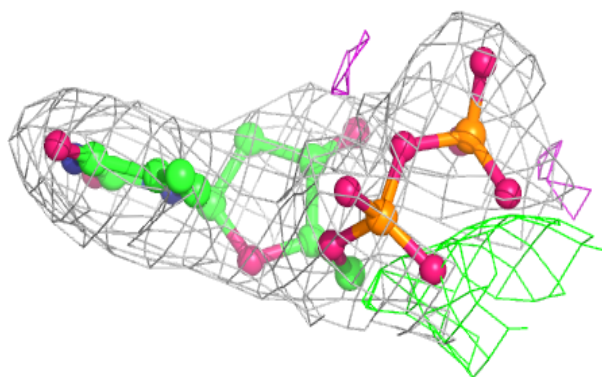
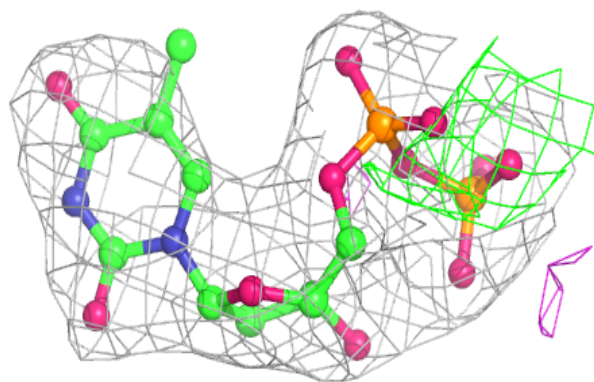
In the following table, the Atoms column lists the number of modelled atoms in the group and the number defined in the chemical component dictionary. The B-factors column lists the minimum, median, 95<sup>th</sup> percentile and maximum values of B factors of atoms in the group. The column labelled 'Q< 0.9' lists the number of atoms with occupancy less than 0.9.

Mol	Type	Chain	Res	Atoms	RSCC	RSR	B-factors( $\text{\AA}^2$ )	Q<0.9
2	MG	A	160	1/1	0.82	0.42	66,66,66,66	0
2	MG	B	161	1/1	0.85	0.32	75,75,75,75	0
2	MG	C	162	1/1	0.88	0.60	70,70,70,70	0
2	MG	D	163	1/1	0.88	0.34	66,66,66,66	0
2	MG	E	164	1/1	0.91	0.39	67,67,67,67	0
3	TYD	F	138	25/25	0.92	0.15	67,72,78,80	0
3	TYD	E	138	25/25	0.93	0.13	61,68,72,77	0
2	MG	F	165	1/1	0.93	0.40	75,75,75,75	0
3	TYD	B	138	25/25	0.94	0.14	61,68,80,83	0
3	TYD	A	138	25/25	0.96	0.13	49,57,62,66	0
3	TYD	C	138	25/25	0.96	0.14	50,61,69,71	0
3	TYD	D	138	25/25	0.97	0.13	54,62,67,68	0

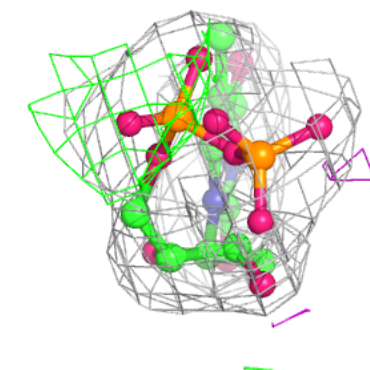
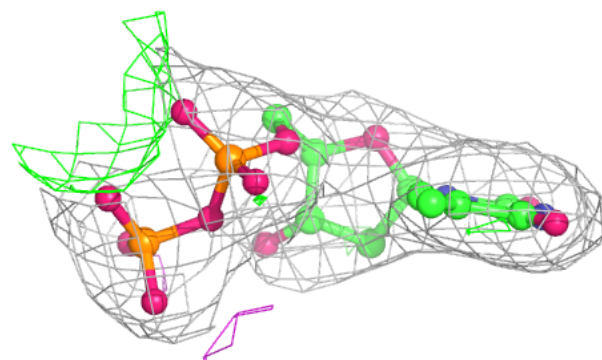
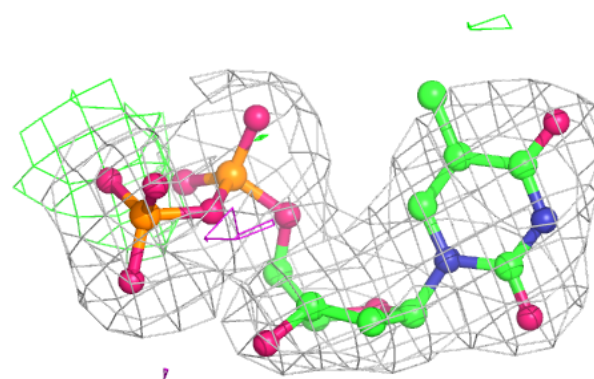
The following is a graphical depiction of the model fit to experimental electron density of all instances of the Ligand of Interest. In addition, ligands with molecular weight > 250 and outliers as shown on the geometry validation Tables will also be included. Each fit is shown from different orientation to approximate a three-dimensional view.

**Electron density around TYD F 138:**

$2mF_o - DF_c$  (at 0.7 rmsd) in gray  
 $mF_o - DF_c$  (at 3 rmsd) in purple (negative)  
and green (positive)

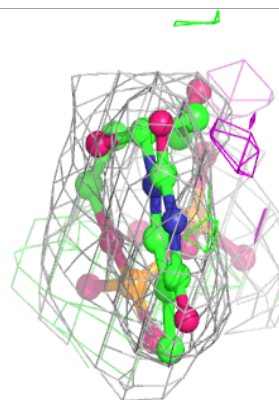
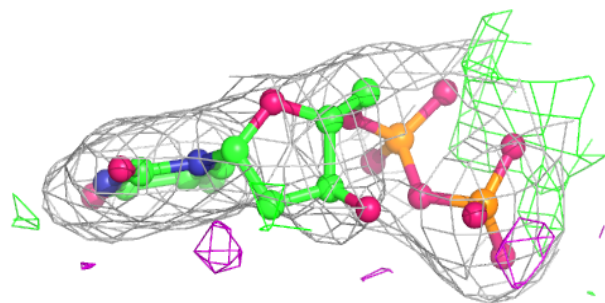
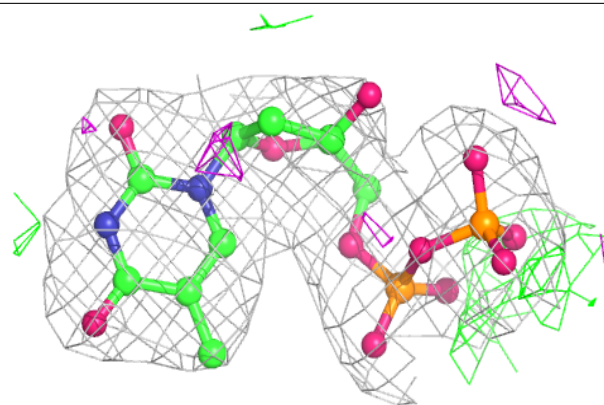
**Electron density around TYD E 138:**

$2mF_o - DF_c$  (at 0.7 rmsd) in gray  
 $mF_o - DF_c$  (at 3 rmsd) in purple (negative)  
and green (positive)



**Electron density around TYD B 138:**

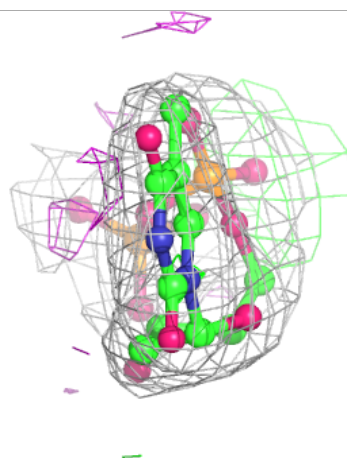
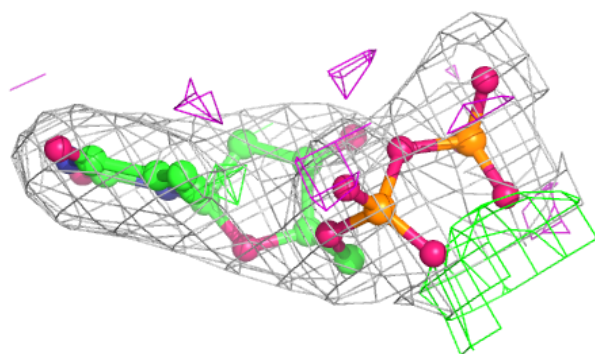
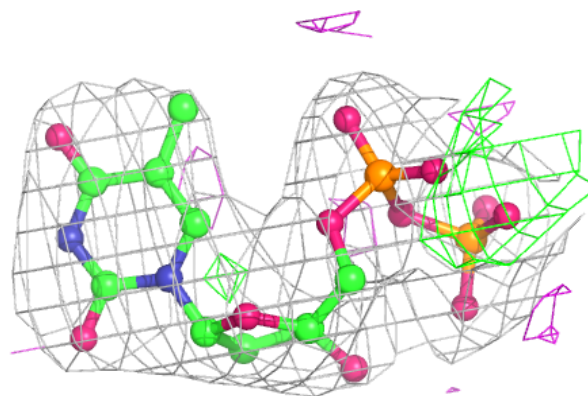
$2mF_o - DF_c$  (at 0.7 rmsd) in gray  
 $mF_o - DF_c$  (at 3 rmsd) in purple (negative)  
and green (positive)





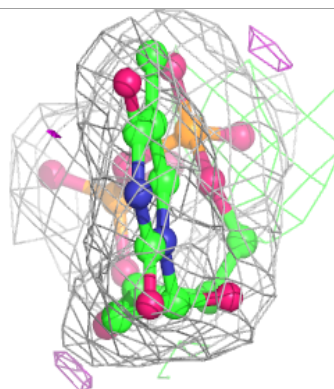
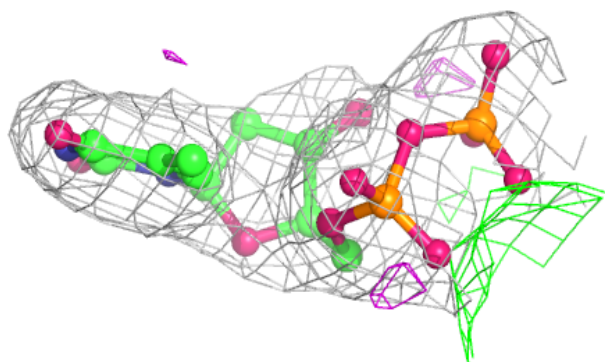
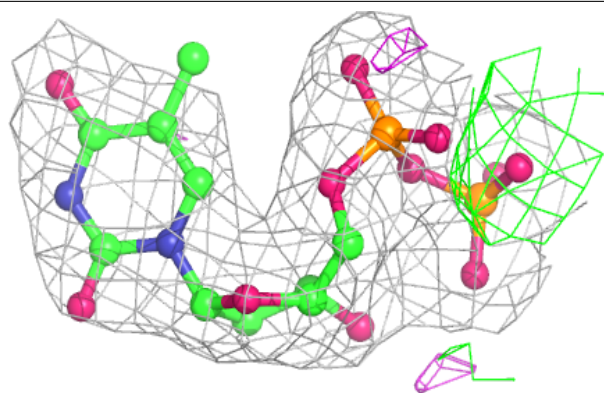
**Electron density around TYD A 138:**

$2mF_o-DF_c$  (at 0.7 rmsd) in gray  
 $mF_o-DF_c$  (at 3 rmsd) in purple (negative)  
and green (positive)

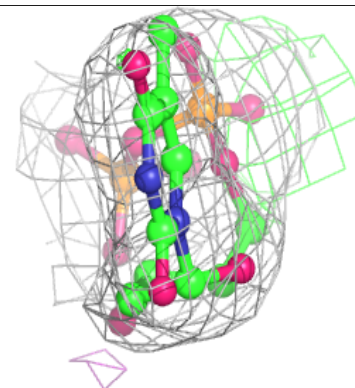
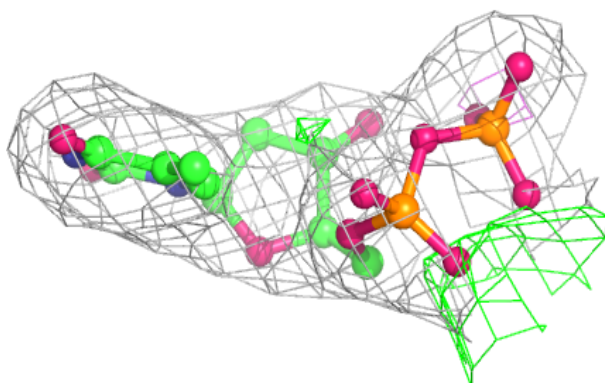
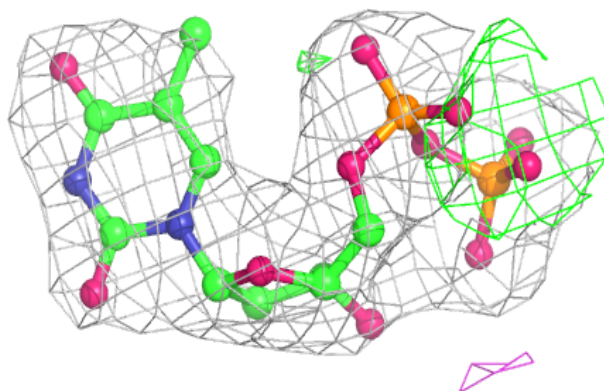


**Electron density around TYD C 138:**

$2mF_o-DF_c$  (at 0.7 rmsd) in gray  
 $mF_o-DF_c$  (at 3 rmsd) in purple (negative)  
and green (positive)

**Electron density around TYD D 138:**

$2mF_o-DF_c$  (at 0.7 rmsd) in gray  
 $mF_o-DF_c$  (at 3 rmsd) in purple (negative)  
and green (positive)



## 6.5 Other polymers [i](#)

There are no such residues in this entry.