



Full wwPDB X-ray Structure Validation Report ⓘ

Aug 10, 2020 – 05:49 AM BST

PDB ID : 5EW6
Title : Structure of ligand binding region of uPARAP at pH 7.4 without calcium
Authors : Yuan, C.; Huang, M.
Deposited on : 2015-11-20
Resolution : 2.29 Å(reported)

This is a Full wwPDB X-ray Structure Validation Report for a publicly released PDB entry.

We welcome your comments at validation@mail.wwpdb.org

A user guide is available at

<https://www.wwpdb.org/validation/2017/XrayValidationReportHelp>

with specific help available everywhere you see the ⓘ symbol.

The following versions of software and data (see [references ⓘ](#)) were used in the production of this report:

MolProbity : 4.02b-467
Mogul : 1.8.5 (274361), CSD as541be (2020)
Xtriage (Phenix) : 1.13
EDS : 2.13.1
Percentile statistics : 20191225.v01 (using entries in the PDB archive December 25th 2019)
Refmac : 5.8.0158
CCP4 : 7.0.044 (Gargrove)
Ideal geometry (proteins) : Engh & Huber (2001)
Ideal geometry (DNA, RNA) : Parkinson et al. (1996)
Validation Pipeline (wwPDB-VP) : 2.13.1

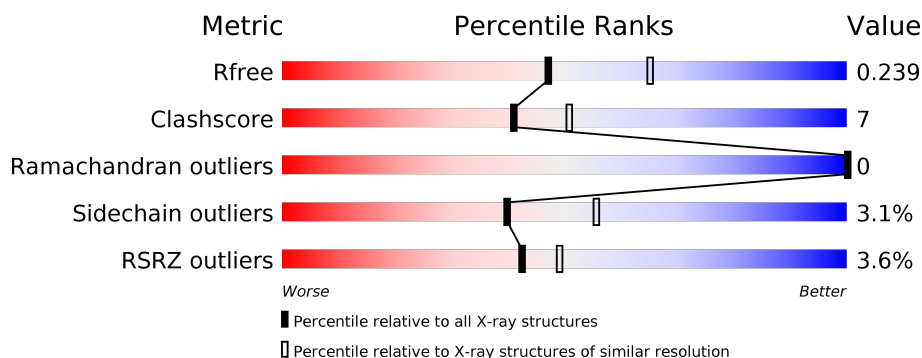
1 Overall quality at a glance

The following experimental techniques were used to determine the structure:

X-RAY DIFFRACTION

The reported resolution of this entry is 2.29 Å.

Percentile scores (ranging between 0-100) for global validation metrics of the entry are shown in the following graphic. The table shows the number of entries on which the scores are based.



Metric	Whole archive (#Entries)	Similar resolution (#Entries, resolution range(Å))
R_{free}	130704	5042 (2.30-2.30)
Clashscore	141614	5643 (2.30-2.30)
Ramachandran outliers	138981	5575 (2.30-2.30)
Sidechain outliers	138945	5575 (2.30-2.30)
RSRZ outliers	127900	4938 (2.30-2.30)

The table below summarises the geometric issues observed across the polymeric chains and their fit to the electron density. The red, orange, yellow and green segments on the lower bar indicate the fraction of residues that contain outliers for ≥ 3 , 2, 1 and 0 types of geometric quality criteria respectively. A grey segment represents the fraction of residues that are not modelled. The numeric value for each fraction is indicated below the corresponding segment, with a dot representing fractions $\leq 5\%$. The upper red bar (where present) indicates the fraction of residues that have poor fit to the electron density. The numeric value is given above the bar.

Mol	Chain	Length	Quality of chain
1	A	492	<div> <div>3%</div> <div> <div></div> <div>75%</div> <div>14%</div> <div>10%</div> </div> </div>
2	B	3	<div> <div>33%</div> <div>67%</div> </div>

2 Entry composition [i](#)

There are 6 unique types of molecules in this entry. The entry contains 3682 atoms, of which 0 are hydrogens and 0 are deuteriums.

In the tables below, the ZeroOcc column contains the number of atoms modelled with zero occupancy, the AltConf column contains the number of residues with at least one atom in alternate conformation and the Trace column contains the number of residues modelled with at most 2 atoms.

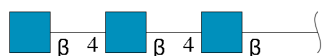
- Molecule 1 is a protein called C-type mannose receptor 2.

Mol	Chain	Residues	Atoms					ZeroOcc	AltConf	Trace
1	A	442	Total	C	N	O	S	0	0	0
			3539	2224	612	677	26			

There are 13 discrepancies between the modelled and reference sequences:

Chain	Residue	Modelled	Actual	Comment	Reference
A	29	ARG	-	expression tag	UNP Q9UBG0
A	30	SER	-	expression tag	UNP Q9UBG0
A	43	ILE	VAL	variant	UNP Q9UBG0
A	511	THR	-	expression tag	UNP Q9UBG0
A	512	ARG	-	expression tag	UNP Q9UBG0
A	513	THR	-	expression tag	UNP Q9UBG0
A	514	GLY	-	expression tag	UNP Q9UBG0
A	515	HIS	-	expression tag	UNP Q9UBG0
A	516	HIS	-	expression tag	UNP Q9UBG0
A	517	HIS	-	expression tag	UNP Q9UBG0
A	518	HIS	-	expression tag	UNP Q9UBG0
A	519	HIS	-	expression tag	UNP Q9UBG0
A	520	HIS	-	expression tag	UNP Q9UBG0

- Molecule 2 is an oligosaccharide called 2-acetamido-2-deoxy-beta-D-glucopyranose-(1-4)-2-acetamido-2-deoxy-beta-D-glucopyranose-(1-4)-2-acetamido-2-deoxy-beta-D-glucopyranose.



Mol	Chain	Residues	Atoms				ZeroOcc	AltConf	Trace
2	B	3	Total	C	N	O	0	0	0
			42	24	3	15			

- Molecule 3 is SODIUM ION (three-letter code: NA) (formula: Na).

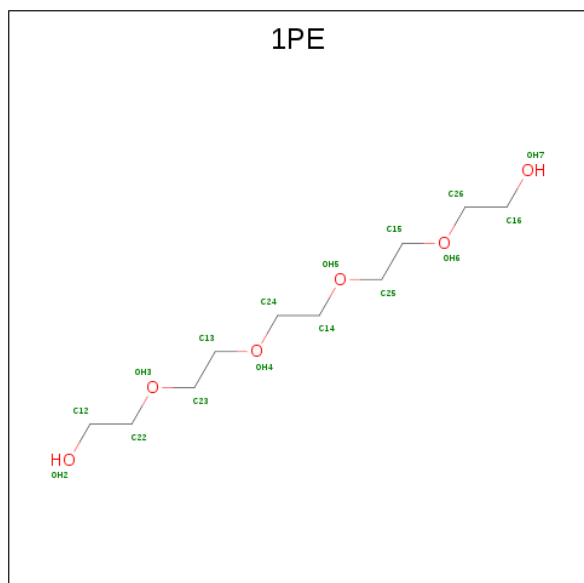
Mol	Chain	Residues	Atoms			ZeroOcc	AltConf
3	A	2	Total	Na		0	0
			2	2			

- Molecule 4 is 2-acetamido-2-deoxy-beta-D-glucopyranose (three-letter code: NAG) (formula: $C_8H_{15}NO_6$).



Mol	Chain	Residues	Atoms				ZeroOcc	AltConf
4	A	1	Total	C	N	O	0	0
			14	8	1	5		

- Molecule 5 is PENTAETHYLENE GLYCOL (three-letter code: 1PE) (formula: $C_{10}H_{22}O_6$).



Mol	Chain	Residues	Atoms			ZeroOcc	AltConf
5	A	1	Total	C	O	0	0
			16	10	6		

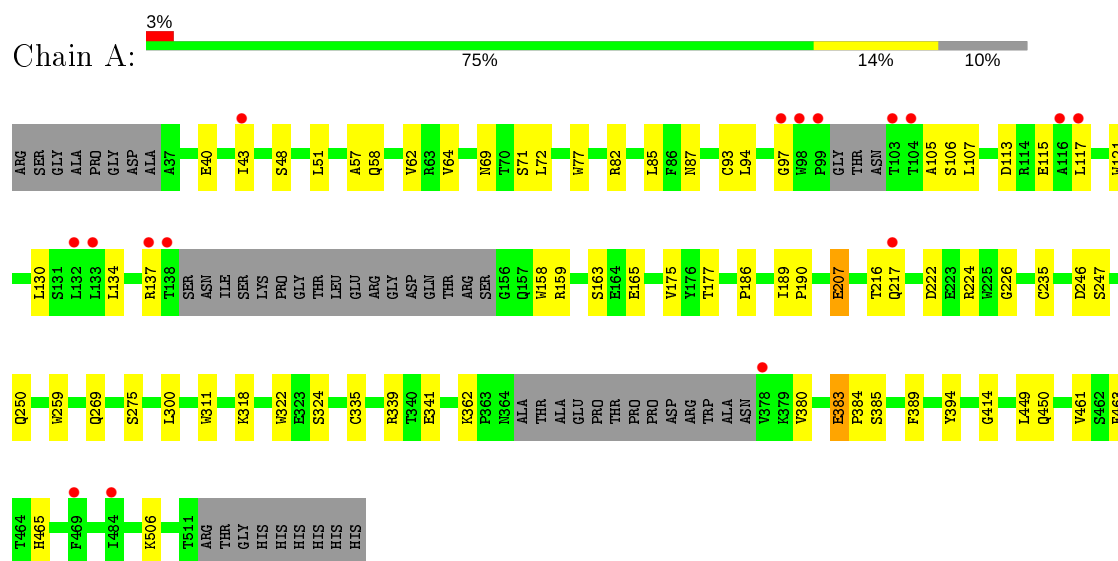
- Molecule 6 is water.

Mol	Chain	Residues	Atoms		ZeroOcc	AltConf
6	A	69	Total	O	0	0
			69	69		

3 Residue-property plots [i](#)

These plots are drawn for all protein, RNA, DNA and oligosaccharide chains in the entry. The first graphic for a chain summarises the proportions of the various outlier classes displayed in the second graphic. The second graphic shows the sequence view annotated by issues in geometry and electron density. Residues are color-coded according to the number of geometric quality criteria for which they contain at least one outlier: green = 0, yellow = 1, orange = 2 and red = 3 or more. A red dot above a residue indicates a poor fit to the electron density ($RSRZ > 2$). Stretches of 2 or more consecutive residues without any outlier are shown as a green connector. Residues present in the sample, but not in the model, are shown in grey.

- Molecule 1: C-type mannose receptor 2



- Molecule 2: 2-acetamido-2-deoxy-beta-D-glucopyranose-(1-4)-2-acetamido-2-deoxy-beta-D-glucopyranose-(1-4)-2-acetamido-2-deoxy-beta-D-glucopyranose



4 Data and refinement statistics

Property	Value	Source
Space group	P 41 21 2	Depositor
Cell constants a, b, c, α , β , γ	78.11Å 78.11Å 252.77Å 90.00° 90.00° 90.00°	Depositor
Resolution (Å)	46.19 – 2.29 50.61 – 2.29	Depositor EDS
% Data completeness (in resolution range)	99.9 (46.19-2.29) 99.5 (50.61-2.29)	Depositor EDS
R_{merge}	0.08	Depositor
R_{sym}	0.09	Depositor
$\langle I/\sigma(I) \rangle$ ¹	2.62 (at 2.29Å)	Xtriage
Refinement program	PHENIX (1.10.1 _2155: ???)	Depositor
R, R_{free}	0.197 , 0.237 0.200 , 0.239	Depositor DCC
R_{free} test set	1749 reflections (4.82%)	wwPDB-VP
Wilson B-factor (Å ²)	49.7	Xtriage
Anisotropy	0.056	Xtriage
Bulk solvent k_{sol} (e/Å ³), B_{sol} (Å ²)	0.34 , 61.1	EDS
L-test for twinning ²	$\langle L \rangle = 0.44$, $\langle L^2 \rangle = 0.27$	Xtriage
Estimated twinning fraction	No twinning to report.	Xtriage
F_o, F_c correlation	0.94	EDS
Total number of atoms	3682	wwPDB-VP
Average B, all atoms (Å ²)	74.0	wwPDB-VP

Xtriage's analysis on translational NCS is as follows: *The largest off-origin peak in the Patterson function is 3.11% of the height of the origin peak. No significant pseudotranslation is detected.*

¹Intensities estimated from amplitudes.

²Theoretical values of $\langle |L| \rangle$, $\langle L^2 \rangle$ for acentric reflections are 0.5, 0.333 respectively for untwinned datasets, and 0.375, 0.2 for perfectly twinned datasets.

5 Model quality [i](#)

5.1 Standard geometry [i](#)

Bond lengths and bond angles in the following residue types are not validated in this section: NA, NAG, 1PE

The Z score for a bond length (or angle) is the number of standard deviations the observed value is removed from the expected value. A bond length (or angle) with $|Z| > 5$ is considered an outlier worth inspection. RMSZ is the root-mean-square of all Z scores of the bond lengths (or angles).

Mol	Chain	Bond lengths		Bond angles	
		RMSZ	$\# Z > 5$	RMSZ	$\# Z > 5$
1	A	0.42	0/3640	0.64	2/4948 (0.0%)

Chiral center outliers are detected by calculating the chiral volume of a chiral center and verifying if the center is modelled as a planar moiety or with the opposite hand. A planarity outlier is detected by checking planarity of atoms in a peptide group, atoms in a mainchain group or atoms of a sidechain that are expected to be planar.

Mol	Chain	#Chirality outliers	#Planarity outliers
1	A	0	1

There are no bond length outliers.

All (2) bond angle outliers are listed below:

Mol	Chain	Res	Type	Atoms	Z	Observed($^{\circ}$)	Ideal($^{\circ}$)
1	A	235	CYS	CA-CB-SG	-6.92	101.55	114.00
1	A	105	ALA	C-N-CA	5.56	135.60	121.70

There are no chirality outliers.

All (1) planarity outliers are listed below:

Mol	Chain	Res	Type	Group
1	A	113	ASP	Peptide

5.2 Too-close contacts [i](#)

In the following table, the Non-H and H(model) columns list the number of non-hydrogen atoms and hydrogen atoms in the chain respectively. The H(added) column lists the number of hydrogen atoms added and optimized by MolProbity. The Clashes column lists the number of clashes within the asymmetric unit, whereas Symm-Clashes lists symmetry related clashes.

Mol	Chain	Non-H	H(model)	H(added)	Clashes	Symm-Clashes
1	A	3539	0	3270	49	0
2	B	42	0	37	0	0
3	A	2	0	0	0	0
4	A	14	0	13	0	0
5	A	16	0	22	0	0
6	A	69	0	0	3	0
All	All	3682	0	3342	49	0

The all-atom clashscore is defined as the number of clashes found per 1000 atoms (including hydrogen atoms). The all-atom clashscore for this structure is 7.

All (49) close contacts within the same asymmetric unit are listed below, sorted by their clash magnitude.

Atom-1	Atom-2	Interatomic distance (Å)	Clash overlap (Å)
1:A:40:GLU:HB3	1:A:43:ILE:HD12	1.26	1.18
1:A:40:GLU:CB	1:A:43:ILE:HD12	1.74	1.15
1:A:40:GLU:HB3	1:A:43:ILE:CD1	1.98	0.94
1:A:216:THR:HG21	1:A:222:ASP:HB2	1.52	0.90
1:A:40:GLU:CG	1:A:43:ILE:HD12	2.02	0.89
1:A:217:GLN:HB2	6:A:704:HOH:O	1.73	0.87
1:A:250:GLN:HE22	1:A:269:GLN:HE22	1.18	0.86
1:A:217:GLN:CB	6:A:704:HOH:O	2.23	0.83
1:A:383:GLU:OE2	1:A:506:LYS:NZ	2.16	0.78
1:A:40:GLU:CG	1:A:43:ILE:CD1	2.64	0.75
1:A:40:GLU:CB	1:A:43:ILE:CD1	2.62	0.71
1:A:40:GLU:CD	1:A:43:ILE:HD11	2.16	0.66
1:A:64:VAL:HG23	1:A:134:LEU:HD21	1.79	0.64
1:A:40:GLU:HG3	1:A:43:ILE:HD12	1.83	0.59
1:A:384:PRO:O	1:A:385:SER:OG	2.17	0.58
1:A:93:CYS:HB3	6:A:740:HOH:O	2.03	0.58
1:A:40:GLU:HG3	1:A:43:ILE:CD1	2.34	0.57
1:A:94:LEU:HD11	1:A:107:LEU:HD22	1.87	0.57
1:A:250:GLN:NE2	1:A:269:GLN:HE22	1.96	0.54
1:A:77:TRP:CZ3	1:A:87:ASN:HB2	2.43	0.54
1:A:250:GLN:HE22	1:A:269:GLN:NE2	1.97	0.53
1:A:177:THR:HB	1:A:226:GLY:HA3	1.91	0.53
1:A:163:SER:OG	1:A:165:GLU:HG2	2.09	0.52
1:A:40:GLU:HB3	1:A:43:ILE:CG1	2.39	0.52
1:A:69:ASN:OD1	1:A:71:SER:OG	2.25	0.51
1:A:51:LEU:HD12	1:A:64:VAL:HG21	1.91	0.51
1:A:339:ARG:HH21	1:A:341:GLU:HB3	1.76	0.50
1:A:106:SER:OG	1:A:107:LEU:N	2.42	0.49

Continued on next page...

Continued from previous page...

Atom-1	Atom-2	Interatomic distance (Å)	Clash overlap (Å)
1:A:130:LEU:O	1:A:134:LEU:HB2	2.13	0.48
1:A:207:GLU:CD	1:A:207:GLU:H	2.17	0.47
1:A:389:PHE:HB3	1:A:394:TYR:CE1	2.50	0.47
1:A:362:LYS:HB3	1:A:362:LYS:HE3	1.51	0.45
1:A:189:ILE:HA	1:A:190:PRO:HA	1.72	0.45
1:A:449:LEU:HD23	1:A:450:GLN:O	2.18	0.44
1:A:72:LEU:HD23	1:A:72:LEU:HA	1.86	0.44
1:A:48:SER:HB2	1:A:158:TRP:CZ3	2.54	0.43
1:A:94:LEU:HG	1:A:121:TRP:CZ2	2.53	0.43
1:A:175:VAL:O	1:A:186:PRO:HA	2.19	0.43
1:A:57:ALA:O	1:A:58:GLN:HG3	2.19	0.42
1:A:414:GLY:O	1:A:506:LYS:HE3	2.20	0.42
1:A:48:SER:HB2	1:A:158:TRP:CH2	2.54	0.42
1:A:275:SER:HA	1:A:311:TRP:CE3	2.54	0.42
1:A:158:TRP:O	1:A:159:ARG:HD2	2.20	0.42
1:A:259:TRP:CD1	1:A:335:CYS:HB3	2.54	0.42
1:A:82:ARG:NH2	1:A:217:GLN:OE1	2.49	0.41
1:A:247:SER:OG	1:A:362:LYS:HD2	2.21	0.41
1:A:97:GLY:HA2	1:A:117:LEU:HD12	2.02	0.41
1:A:300:LEU:HD21	1:A:322:TRP:CZ2	2.56	0.41
1:A:318:LYS:HD2	1:A:461:VAL:HB	2.03	0.40

There are no symmetry-related clashes.

5.3 Torsion angles [i](#)

5.3.1 Protein backbone [i](#)

In the following table, the Percentiles column shows the percent Ramachandran outliers of the chain as a percentile score with respect to all X-ray entries followed by that with respect to entries of similar resolution.

The Analysed column shows the number of residues for which the backbone conformation was analysed, and the total number of residues.

Mol	Chain	Analysed	Favoured	Allowed	Outliers	Percentiles	
1	A	434/492 (88%)	415 (96%)	19 (4%)	0	100	100

There are no Ramachandran outliers to report.

5.3.2 Protein sidechains ⓘ

In the following table, the Percentiles column shows the percent sidechain outliers of the chain as a percentile score with respect to all X-ray entries followed by that with respect to entries of similar resolution.

The Analysed column shows the number of residues for which the sidechain conformation was analysed, and the total number of residues.

Mol	Chain	Analysed	Rotameric	Outliers	Percentiles
1	A	385/427 (90%)	373 (97%)	12 (3%)	40 55

All (12) residues with a non-rotameric sidechain are listed below:

Mol	Chain	Res	Type
1	A	62	VAL
1	A	85	LEU
1	A	115	GLU
1	A	137	ARG
1	A	207	GLU
1	A	224	ARG
1	A	246	ASP
1	A	324	SER
1	A	380	VAL
1	A	383	GLU
1	A	463	PHE
1	A	465	HIS

Some sidechains can be flipped to improve hydrogen bonding and reduce clashes. All (1) such sidechains are listed below:

Mol	Chain	Res	Type
1	A	269	GLN

5.3.3 RNA ⓘ

There are no RNA molecules in this entry.

5.4 Non-standard residues in protein, DNA, RNA chains ⓘ

There are no non-standard protein/DNA/RNA residues in this entry.

5.5 Carbohydrates ⓘ

3 monosaccharides are modelled in this entry.

In the following table, the Counts columns list the number of bonds (or angles) for which Mogul statistics could be retrieved, the number of bonds (or angles) that are observed in the model and the number of bonds (or angles) that are defined in the Chemical Component Dictionary. The Link column lists molecule types, if any, to which the group is linked. The Z score for a bond length (or angle) is the number of standard deviations the observed value is removed from the expected value. A bond length (or angle) with $|Z| > 2$ is considered an outlier worth inspection. RMSZ is the root-mean-square of all Z scores of the bond lengths (or angles).

Mol	Type	Chain	Res	Link	Bond lengths			Bond angles		
					Counts	RMSZ	# Z > 2	Counts	RMSZ	# Z > 2
2	NAG	B	1	1,2	14,14,15	0.54	0	17,19,21	0.69	1 (5%)
2	NAG	B	2	2	14,14,15	0.65	0	17,19,21	0.61	0
2	NAG	B	3	2	14,14,15	1.34	2 (14%)	17,19,21	0.52	0

In the following table, the Chirals column lists the number of chiral outliers, the number of chiral centers analysed, the number of these observed in the model and the number defined in the Chemical Component Dictionary. Similar counts are reported in the Torsion and Rings columns. '-' means no outliers of that kind were identified.

Mol	Type	Chain	Res	Link	Chirals	Torsions	Rings
2	NAG	B	1	1,2	-	2/6/23/26	0/1/1/1
2	NAG	B	2	2	-	0/6/23/26	0/1/1/1
2	NAG	B	3	2	-	3/6/23/26	0/1/1/1

All (2) bond length outliers are listed below:

Mol	Chain	Res	Type	Atoms	Z	Observed(Å)	Ideal(Å)
2	B	3	NAG	O5-C1	3.86	1.49	1.43
2	B	3	NAG	C1-C2	2.99	1.56	1.52

All (1) bond angle outliers are listed below:

Mol	Chain	Res	Type	Atoms	Z	Observed(°)	Ideal(°)
2	B	1	NAG	C1-O5-C5	2.14	115.09	112.19

There are no chirality outliers.

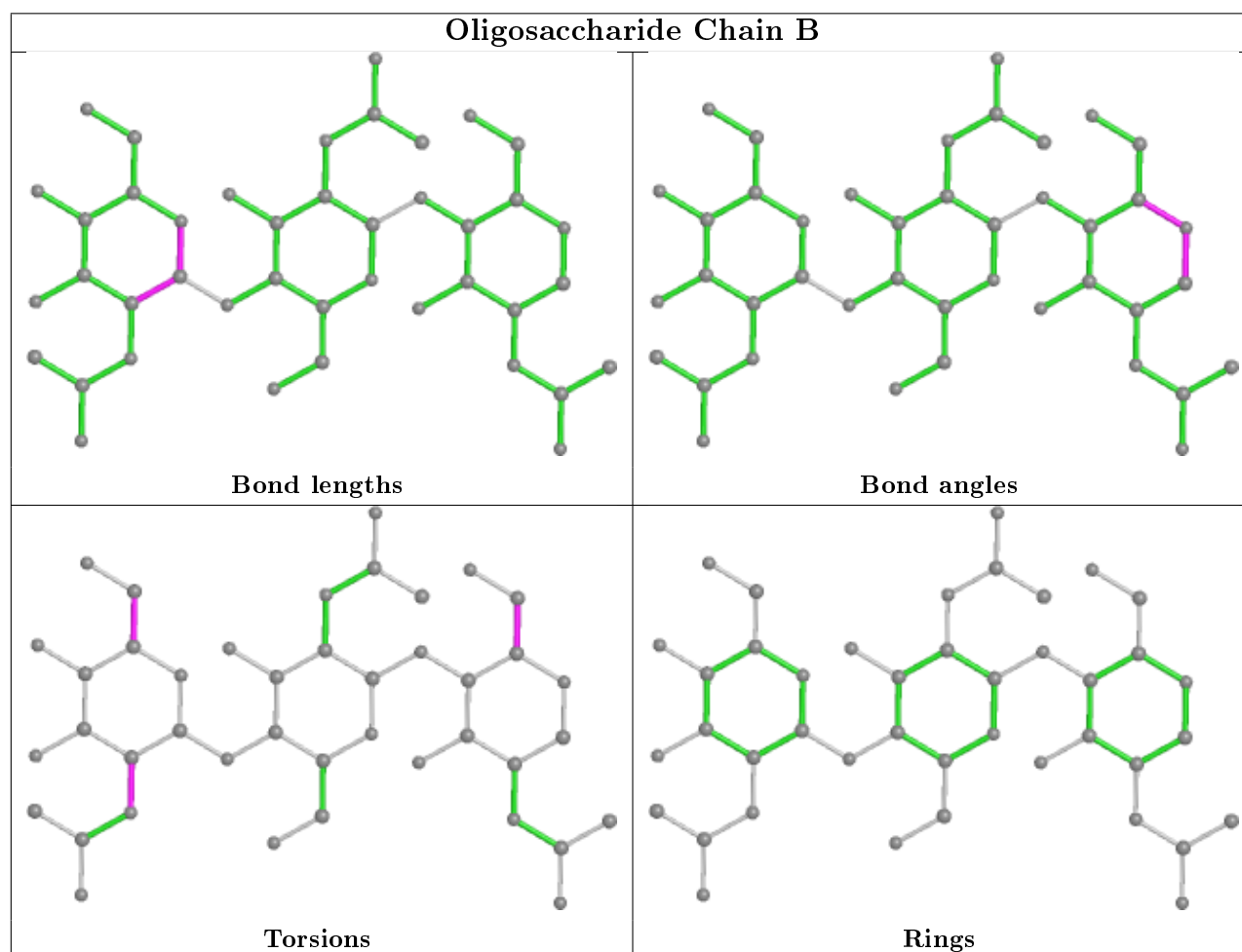
All (5) torsion outliers are listed below:

Mol	Chain	Res	Type	Atoms
2	B	1	NAG	O5-C5-C6-O6
2	B	1	NAG	C4-C5-C6-O6
2	B	3	NAG	O5-C5-C6-O6
2	B	3	NAG	C1-C2-N2-C7
2	B	3	NAG	C3-C2-N2-C7

There are no ring outliers.

No monomer is involved in short contacts.

The following is a two-dimensional graphical depiction of Mogul quality analysis of bond lengths, bond angles, torsion angles, and ring geometry for oligosaccharide.



5.6 Ligand geometry [i](#)

Of 4 ligands modelled in this entry, 2 are monoatomic - leaving 2 for Mogul analysis.

In the following table, the Counts columns list the number of bonds (or angles) for which Mogul statistics could be retrieved, the number of bonds (or angles) that are observed in the model and the number of bonds (or angles) that are defined in the Chemical Component Dictionary. The

Link column lists molecule types, if any, to which the group is linked. The Z score for a bond length (or angle) is the number of standard deviations the observed value is removed from the expected value. A bond length (or angle) with $|Z| > 2$ is considered an outlier worth inspection. RMSZ is the root-mean-square of all Z scores of the bond lengths (or angles).

Mol	Type	Chain	Res	Link	Bond lengths			Bond angles		
					Counts	RMSZ	$\# Z > 2$	Counts	RMSZ	$\# Z > 2$
4	NAG	A	603	1	14,14,15	0.72	0	17,19,21	0.50	0
5	1PE	A	607	-	15,15,15	0.61	0	14,14,14	0.40	0

In the following table, the Chirals column lists the number of chiral outliers, the number of chiral centers analysed, the number of these observed in the model and the number defined in the Chemical Component Dictionary. Similar counts are reported in the Torsion and Rings columns. '-' means no outliers of that kind were identified.

Mol	Type	Chain	Res	Link	Chirals	Torsions	Rings
4	NAG	A	603	1	-	2/6/23/26	0/1/1/1
5	1PE	A	607	-	-	5/13/13/13	-

There are no bond length outliers.

There are no bond angle outliers.

There are no chirality outliers.

All (7) torsion outliers are listed below:

Mol	Chain	Res	Type	Atoms
4	A	603	NAG	O5-C5-C6-O6
4	A	603	NAG	C4-C5-C6-O6
5	A	607	1PE	OH4-C13-C23-OH3
5	A	607	1PE	OH2-C12-C22-OH3
5	A	607	1PE	C16-C26-OH6-C15
5	A	607	1PE	C25-C15-OH6-C26
5	A	607	1PE	OH5-C14-C24-OH4

There are no ring outliers.

No monomer is involved in short contacts.

5.7 Other polymers ⓘ

There are no such residues in this entry.

5.8 Polymer linkage issues ⓘ

There are no chain breaks in this entry.

6 Fit of model and data [i](#)

6.1 Protein, DNA and RNA chains [i](#)

In the following table, the column labelled ‘#RSRZ> 2’ contains the number (and percentage) of RSRZ outliers, followed by percent RSRZ outliers for the chain as percentile scores relative to all X-ray entries and entries of similar resolution. The OWAB column contains the minimum, median, 95th percentile and maximum values of the occupancy-weighted average B-factor per residue. The column labelled ‘Q< 0.9’ lists the number of (and percentage) of residues with an average occupancy less than 0.9.

Mol	Chain	Analysed	<RSRZ>	#RSRZ>2		OWAB(Å ²)	Q<0.9
1	A	442/492 (89%)	0.44	16 (3%)	42 49	36, 70, 112, 147	0

All (16) RSRZ outliers are listed below:

Mol	Chain	Res	Type	RSRZ
1	A	103	THR	5.0
1	A	104	THR	4.0
1	A	137	ARG	3.7
1	A	97	GLY	3.6
1	A	98	TRP	3.6
1	A	99	PRO	3.6
1	A	116	ALA	3.1
1	A	469	PHE	3.1
1	A	133	LEU	2.9
1	A	43	ILE	2.6
1	A	217	GLN	2.2
1	A	138	THR	2.1
1	A	117	LEU	2.1
1	A	484	ILE	2.1
1	A	132	LEU	2.0
1	A	378	VAL	2.0

6.2 Non-standard residues in protein, DNA, RNA chains [i](#)

There are no non-standard protein/DNA/RNA residues in this entry.

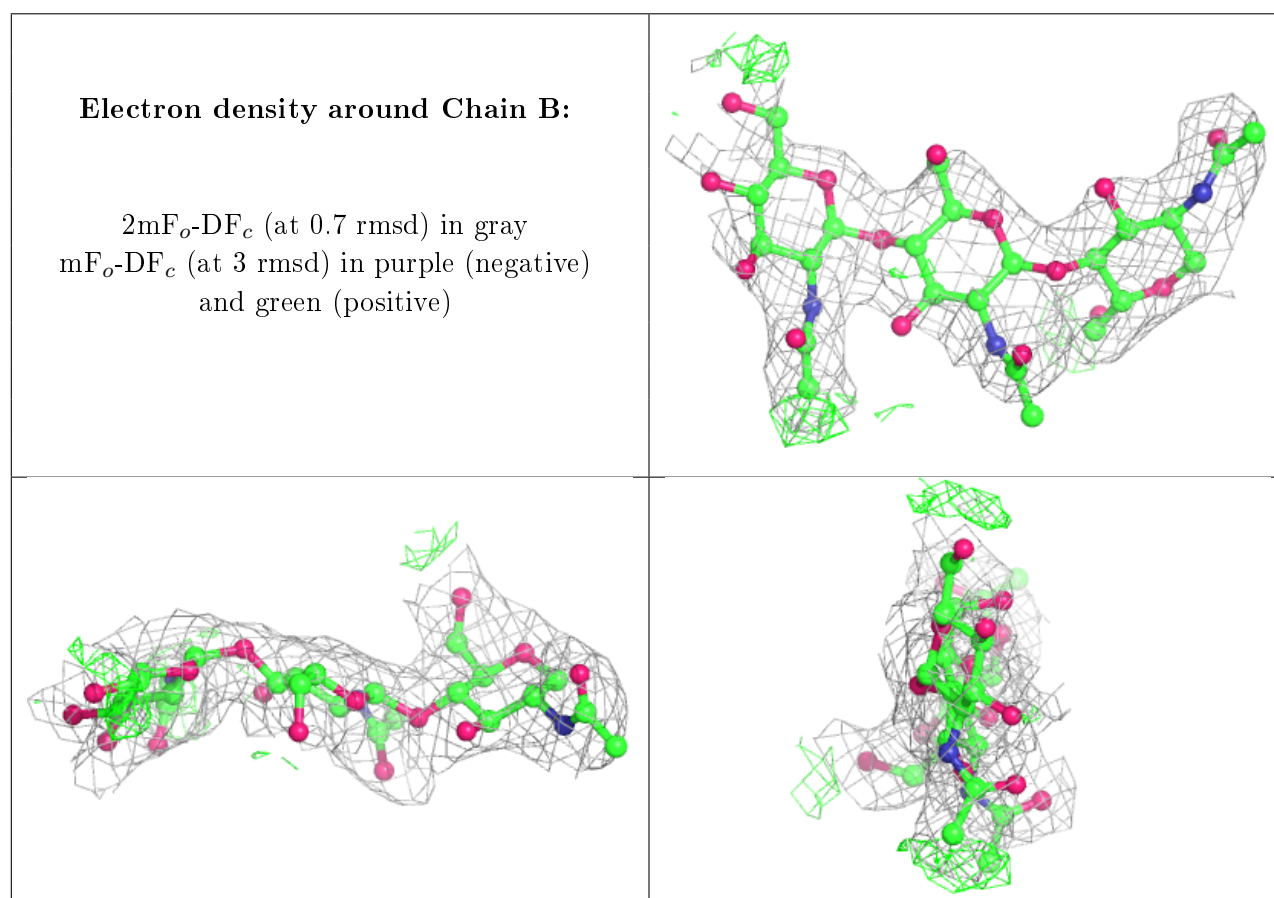
6.3 Carbohydrates [i](#)

In the following table, the Atoms column lists the number of modelled atoms in the group and the number defined in the chemical component dictionary. The B-factors column lists the minimum,

median, 95th percentile and maximum values of B factors of atoms in the group. The column labelled 'Q< 0.9' lists the number of atoms with occupancy less than 0.9.

Mol	Type	Chain	Res	Atoms	RSCC	RSR	B-factors(Å ²)	Q<0.9
2	NAG	B	3	14/15	0.54	0.25	103,122,129,129	0
2	NAG	B	2	14/15	0.86	0.26	90,121,126,131	0
2	NAG	B	1	14/15	0.88	0.16	74,92,102,109	0

The following is a graphical depiction of the model fit to experimental electron density for oligosaccharide. Each fit is shown from different orientation to approximate a three-dimensional view.



6.4 Ligands ⓘ

In the following table, the Atoms column lists the number of modelled atoms in the group and the number defined in the chemical component dictionary. The B-factors column lists the minimum, median, 95th percentile and maximum values of B factors of atoms in the group. The column labelled 'Q< 0.9' lists the number of atoms with occupancy less than 0.9.

Mol	Type	Chain	Res	Atoms	RSCC	RSR	B-factors(Å ²)	Q<0.9
5	1PE	A	607	16/16	0.72	0.17	69,90,102,103	0
4	NAG	A	603	14/15	0.80	0.28	97,113,123,125	0

Continued on next page...

Continued from previous page...

Mol	Type	Chain	Res	Atoms	RSCC	RSR	B-factors(\AA^2)	Q<0.9
3	NA	A	602	1/1	0.90	0.11	95,95,95,95	0
3	NA	A	601	1/1	0.96	0.08	64,64,64,64	0

6.5 Other polymers [i](#)

There are no such residues in this entry.