



# Full wwPDB X-ray Structure Validation Report ⓘ

May 21, 2020 – 04:12 am BST

PDB ID : 5EYG  
Title : Crystal structure of IMPase/NADP phosphatase complexed with NADP and Ca<sup>2+</sup>  
Authors : Bhattacharyya, S.; Dutta, D.; Ghosh, A.K.; Das, A.K.  
Deposited on : 2015-11-25  
Resolution : 2.20 Å(reported)

This is a Full wwPDB X-ray Structure Validation Report for a publicly released PDB entry.

We welcome your comments at [validation@mail.wwpdb.org](mailto:validation@mail.wwpdb.org)

A user guide is available at

<https://www.wwpdb.org/validation/2017/XrayValidationReportHelp>

with specific help available everywhere you see the ⓘ symbol.

---

The following versions of software and data (see [references ⓘ](#)) were used in the production of this report:

MolProbity : 4.02b-467  
Mogul : 1.8.5 (274361), CSD as541be (2020)  
Xtriage (Phenix) : 1.13  
EDS : 2.11  
buster-report : 1.1.7 (2018)  
Percentile statistics : 20191225.v01 (using entries in the PDB archive December 25th 2019)  
Refmac : 5.8.0158  
CCP4 : 7.0.044 (Gargrove)  
Ideal geometry (proteins) : Engh & Huber (2001)  
Ideal geometry (DNA, RNA) : Parkinson et al. (1996)  
Validation Pipeline (wwPDB-VP) : 2.11

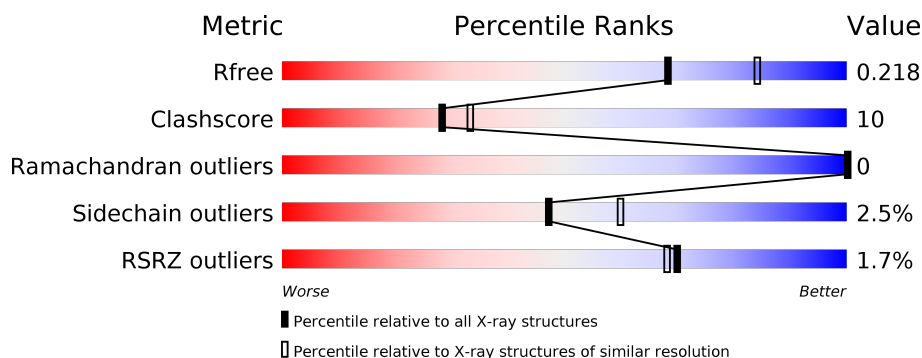
# 1 Overall quality at a glance

The following experimental techniques were used to determine the structure:

*X-RAY DIFFRACTION*

The reported resolution of this entry is 2.20 Å.

Percentile scores (ranging between 0-100) for global validation metrics of the entry are shown in the following graphic. The table shows the number of entries on which the scores are based.



Metric	Whole archive (#Entries)	Similar resolution (#Entries, resolution range(Å))
$R_{free}$	130704	4898 (2.20-2.20)
Clashscore	141614	5594 (2.20-2.20)
Ramachandran outliers	138981	5503 (2.20-2.20)
Sidechain outliers	138945	5504 (2.20-2.20)
RSRZ outliers	127900	4800 (2.20-2.20)

The table below summarises the geometric issues observed across the polymeric chains and their fit to the electron density. The red, orange, yellow and green segments on the lower bar indicate the fraction of residues that contain outliers for  $\geq 3$ , 2, 1 and 0 types of geometric quality criteria respectively. A grey segment represents the fraction of residues that are not modelled. The numeric value for each fraction is indicated below the corresponding segment, with a dot representing fractions  $\leq 5\%$ . The upper red bar (where present) indicates the fraction of residues that have poor fit to the electron density. The numeric value is given above the bar.

Mol	Chain	Length	Quality of chain
1	A	265	<div> <div>2%</div> <div> <div></div> <div>86%</div> <div>11%</div> <div></div> </div> </div>
1	B	265	<div> <div>2%</div> <div> <div></div> <div>84%</div> <div>15%</div> <div></div> </div> </div>

The following table lists non-polymeric compounds, carbohydrate monomers and non-standard residues in protein, DNA, RNA chains that are outliers for geometric or electron-density-fit criteria:

Mol	Type	Chain	Res	Chirality	Geometry	Clashes	Electron density
3	PGE	A	303	-	-	X	-
3	PGE	A	306	-	-	X	-

## 2 Entry composition

There are 9 unique types of molecules in this entry. The entry contains 4741 atoms, of which 0 are hydrogens and 0 are deuteriums.

In the tables below, the ZeroOcc column contains the number of atoms modelled with zero occupancy, the AltConf column contains the number of residues with at least one atom in alternate conformation and the Trace column contains the number of residues modelled with at most 2 atoms.

- Molecule 1 is a protein called Inositol monophosphatase.

Mol	Chain	Residues	Atoms					ZeroOcc	AltConf	Trace
1	A	256	Total	C	N	O	S	0	4	0
			2053	1323	335	379	16			
1	B	265	Total	C	N	O	S	0	4	0
			2143	1379	352	397	15			

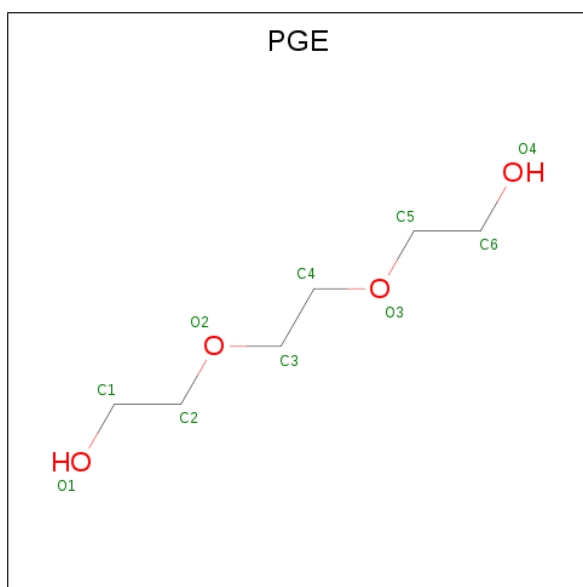
There are 2 discrepancies between the modelled and reference sequences:

Chain	Residue	Modelled	Actual	Comment	Reference
A	142	PHE	ILE	engineered mutation	UNP A0A0D6HL44
B	142	PHE	ILE	engineered mutation	UNP A0A0D6HL44

- Molecule 2 is CALCIUM ION (three-letter code: CA) (formula: Ca).

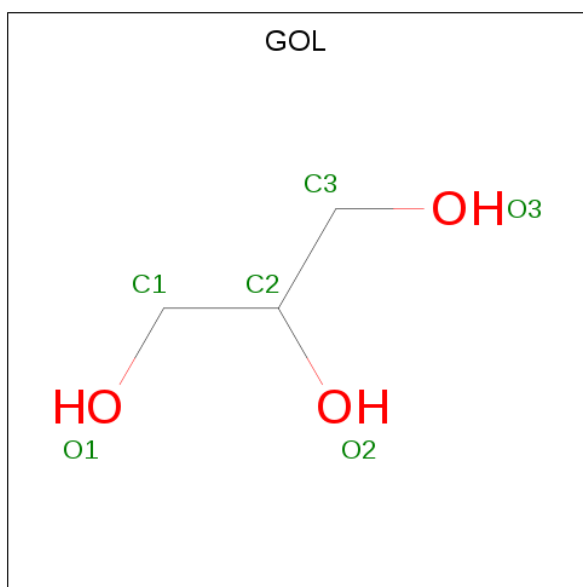
Mol	Chain	Residues	Atoms		ZeroOcc	AltConf
2	B	2	Total	Ca	0	0
			2	2		
2	A	2	Total	Ca	0	0
			2	2		

- Molecule 3 is TRIETHYLENE GLYCOL (three-letter code: PGE) (formula: C<sub>6</sub>H<sub>14</sub>O<sub>4</sub>).



Mol	Chain	Residues	Atoms			ZeroOcc	AltConf
3	A	1	Total	C	O	0	0
			10	6	4		
3	A	1	Total	C	O	0	0
			10	6	4		
3	A	1	Total	C	O	0	0
			10	6	4		

- Molecule 4 is GLYCEROL (three-letter code: GOL) (formula:  $C_3H_8O_3$ ).



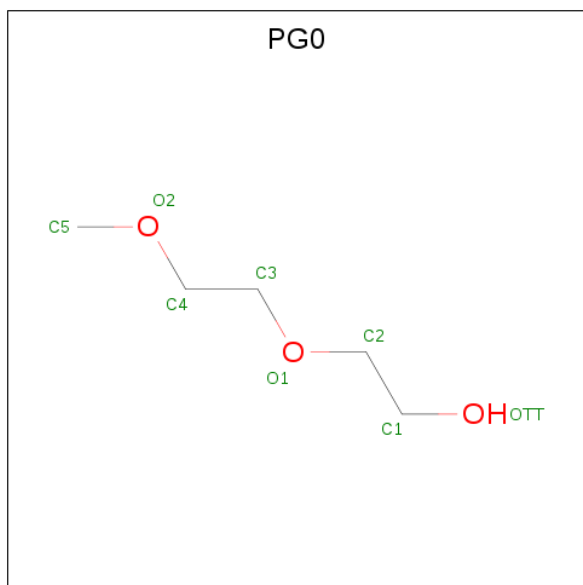
Mol	Chain	Residues	Atoms			ZeroOcc	AltConf
4	A	1	Total	C	O	0	0
			6	3	3		

*Continued on next page...*

*Continued from previous page...*

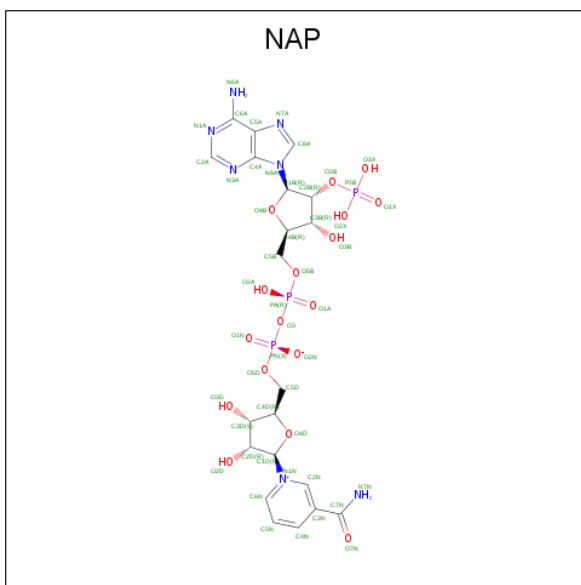
Mol	Chain	Residues	Atoms			ZeroOcc	AltConf
4	B	1	Total	C	O	0	0
			6	3	3		

- Molecule 5 is 2-(2-METHOXYETHOXY)ETHANOL (three-letter code: PG0) (formula:  $C_5H_{12}O_3$ ).



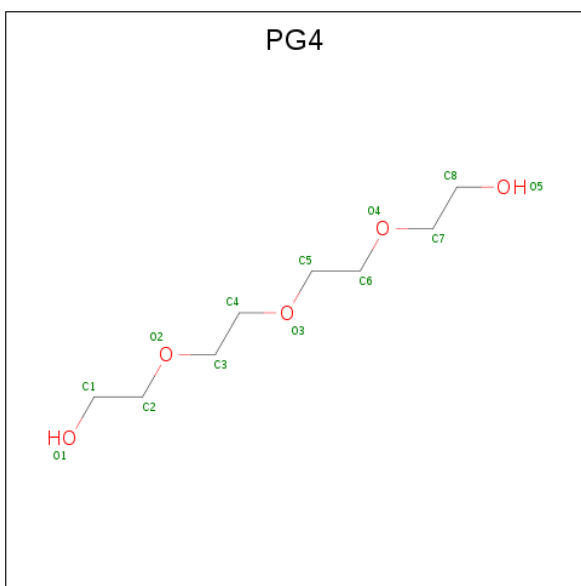
Mol	Chain	Residues	Atoms			ZeroOcc	AltConf
5	A	1	Total	C	O	0	0
			8	5	3		

- Molecule 6 is NADP NICOTINAMIDE-ADENINE-DINUCLEOTIDE PHOSPHATE (three-letter code: NAP) (formula:  $C_{21}H_{28}N_7O_{17}P_3$ ).



Mol	Chain	Residues	Atoms					ZeroOcc	AltConf
6	A	1	Total 48	C 21	N 7	O 17	P 3	0	0
6	B	1	Total 48	C 21	N 7	O 17	P 3	0	0

- Molecule 7 is TETRAETHYLENE GLYCOL (three-letter code: PG4) (formula:  $C_8H_{18}O_5$ ).



Mol	Chain	Residues	Atoms			ZeroOcc	AltConf
7	B	1	Total	C	O	0	0
			13	8	5		

- Molecule 8 is CHLORIDE ION (three-letter code: CL) (formula: Cl).

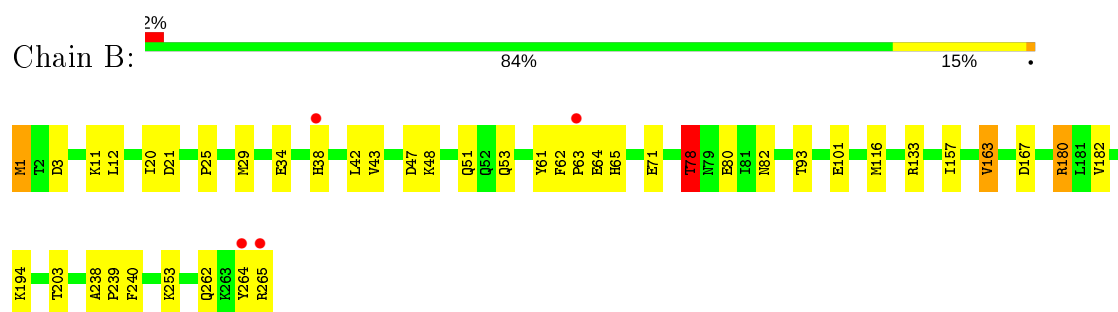
Mol	Chain	Residues	Atoms		ZeroOcc	AltConf
8	B	1	Total 1	Cl 1	0	0

- Molecule 9 is water.

Mol	Chain	Residues	Atoms		ZeroOcc	AltConf
9	A	174	Total 174	O 174	0	0
9	B	207	Total 207	O 207	0	0



- Molecule 1: Inositol monophosphatase



## 4 Data and refinement statistics

Property	Value	Source
Space group	P 21 21 21	Depositor
Cell constants a, b, c, $\alpha$ , $\beta$ , $\gamma$	72.09 Å 78.88 Å 112.41 Å 90.00° 90.00° 90.00°	Depositor
Resolution (Å)	19.59 – 2.20 19.59 – 2.20	Depositor EDS
% Data completeness (in resolution range)	99.8 (19.59-2.20) 100.0 (19.59-2.20)	Depositor EDS
$R_{merge}$	(Not available)	Depositor
$R_{sym}$	0.12	Depositor
$\langle I/\sigma(I) \rangle$ <sup>1</sup>	3.98 (at 2.21 Å)	Xtriage
Refinement program	REFMAC 5.8.0073	Depositor
R, $R_{free}$	0.161 , 0.207 0.172 , 0.218	Depositor DCC
$R_{free}$ test set	1680 reflections (5.07%)	wwPDB-VP
Wilson B-factor (Å <sup>2</sup> )	19.9	Xtriage
Anisotropy	0.369	Xtriage
Bulk solvent $k_{sol}$ (e/Å <sup>3</sup> ), $B_{sol}$ (Å <sup>2</sup> )	0.36 , 47.6	EDS
L-test for twinning <sup>2</sup>	$\langle  L  \rangle = 0.48$ , $\langle L^2 \rangle = 0.31$	Xtriage
Estimated twinning fraction	No twinning to report.	Xtriage
$F_o, F_c$ correlation	0.95	EDS
Total number of atoms	4741	wwPDB-VP
Average B, all atoms (Å <sup>2</sup> )	23.0	wwPDB-VP

Xtriage's analysis on translational NCS is as follows: *The largest off-origin peak in the Patterson function is 4.90% of the height of the origin peak. No significant pseudotranslation is detected.*

<sup>1</sup>Intensities estimated from amplitudes.

<sup>2</sup>Theoretical values of  $\langle |L| \rangle$ ,  $\langle L^2 \rangle$  for acentric reflections are 0.5, 0.333 respectively for untwinned datasets, and 0.375, 0.2 for perfectly twinned datasets.

## 5 Model quality

### 5.1 Standard geometry

Bond lengths and bond angles in the following residue types are not validated in this section: GOL, PGE, CL, CA, NAP, PG4, PG0

The Z score for a bond length (or angle) is the number of standard deviations the observed value is removed from the expected value. A bond length (or angle) with  $|Z| > 5$  is considered an outlier worth inspection. RMSZ is the root-mean-square of all Z scores of the bond lengths (or angles).

Mol	Chain	Bond lengths		Bond angles	
		RMSZ	# Z  >5	RMSZ	# Z  >5
1	A	0.90	0/2108	0.92	3/2849 (0.1%)
1	B	0.93	4/2202 (0.2%)	1.12	7/2978 (0.2%)
All	All	0.91	4/4310 (0.1%)	1.03	10/5827 (0.2%)

Chiral center outliers are detected by calculating the chiral volume of a chiral center and verifying if the center is modelled as a planar moiety or with the opposite hand. A planarity outlier is detected by checking planarity of atoms in a peptide group, atoms in a mainchain group or atoms of a sidechain that are expected to be planar.

Mol	Chain	#Chirality outliers	#Planarity outliers
1	A	0	1
1	B	0	1
All	All	0	2

All (4) bond length outliers are listed below:

Mol	Chain	Res	Type	Atoms	Z	Observed(Å)	Ideal(Å)
1	B	180	ARG	CD-NE	-6.68	1.35	1.46
1	B	101	GLU	CD-OE2	6.31	1.32	1.25
1	B	61	TYR	CE1-CZ	-6.14	1.30	1.38
1	B	3	ASP	CB-CG	5.18	1.62	1.51

All (10) bond angle outliers are listed below:

Mol	Chain	Res	Type	Atoms	Z	Observed(°)	Ideal(°)
1	B	180	ARG	NE-CZ-NH2	-26.55	107.02	120.30
1	B	180	ARG	NE-CZ-NH1	17.30	128.95	120.30
1	B	180	ARG	CD-NE-CZ	8.72	135.81	123.60
1	A	180	ARG	NE-CZ-NH2	8.30	124.45	120.30
1	B	21	ASP	CB-CG-OD2	-6.02	112.88	118.30

*Continued on next page...*

*Continued from previous page...*

Mol	Chain	Res	Type	Atoms	Z	Observed(°)	Ideal(°)
1	A	102	ASP	CB-CG-OD2	5.62	123.36	118.30
1	B	78	THR	N-CA-CB	-5.60	99.67	110.30
1	B	3	ASP	CB-CG-OD1	5.34	123.10	118.30
1	A	29	MET	N-CA-CB	5.29	120.12	110.60
1	B	163	VAL	N-CA-CB	-5.03	100.43	111.50

There are no chirality outliers.

All (2) planarity outliers are listed below:

Mol	Chain	Res	Type	Group
1	A	264	TYR	Peptide
1	B	180	ARG	Sidechain

## 5.2 Too-close contacts ⓘ

In the following table, the Non-H and H(model) columns list the number of non-hydrogen atoms and hydrogen atoms in the chain respectively. The H(added) column lists the number of hydrogen atoms added and optimized by MolProbity. The Clashes column lists the number of clashes within the asymmetric unit, whereas Symm-Clashes lists symmetry related clashes.

Mol	Chain	Non-H	H(model)	H(added)	Clashes	Symm-Clashes
1	A	2053	0	2045	43	0
1	B	2143	0	2127	33	0
2	A	2	0	0	0	0
2	B	2	0	0	1	0
3	A	30	0	41	28	0
4	A	6	0	8	0	0
4	B	6	0	8	0	0
5	A	8	0	12	5	0
6	A	48	0	25	3	0
6	B	48	0	25	2	0
7	B	13	0	18	6	0
8	B	1	0	0	0	0
9	A	174	0	0	9	0
9	B	207	0	0	10	0
All	All	4741	0	4309	85	0

The all-atom clashscore is defined as the number of clashes found per 1000 atoms (including hydrogen atoms). The all-atom clashscore for this structure is 10.

All (85) close contacts within the same asymmetric unit are listed below, sorted by their clash magnitude.

Atom-1	Atom-2	Interatomic distance (Å)	Clash overlap (Å)
1:B:194[A]:LYS:NZ	9:B:401:HOH:O	1.75	1.15
1:B:64:GLU:N	1:B:64:GLU:OE1	1.83	1.11
1:B:64:GLU:H	1:B:64:GLU:CD	1.68	0.94
1:A:73:SER:OG	3:A:303:PGE:O4	1.90	0.87
1:A:64:GLU:HB2	3:A:306:PGE:H5	1.61	0.81
1:A:64:GLU:HB2	3:A:306:PGE:C5	2.12	0.80
1:A:76[B]:MET:HA	1:A:76[B]:MET:HE3	1.68	0.75
1:A:76[A]:MET:H	3:A:303:PGE:H4	1.52	0.74
1:A:125:HIS:HD2	9:A:549:HOH:O	1.71	0.74
1:A:76[B]:MET:HA	1:A:76[B]:MET:CE	2.17	0.74
1:A:64:GLU:CG	3:A:306:PGE:H5	2.17	0.73
6:A:308:NAP:O3	6:A:308:NAP:H6N	1.88	0.73
1:A:76[B]:MET:H	3:A:303:PGE:H4	1.53	0.72
1:A:76[A]:MET:HE2	3:A:303:PGE:H42	1.72	0.71
1:B:51:GLN:OE1	1:B:71:GLU:HB2	1.91	0.70
1:A:64:GLU:CB	3:A:306:PGE:H5	2.21	0.70
5:A:307:PG0:H21	9:A:486:HOH:O	1.93	0.68
6:A:308:NAP:H51A	6:A:308:NAP:H5N	1.73	0.68
1:A:76[B]:MET:HB2	3:A:303:PGE:H42	1.76	0.67
1:B:53:GLN:OE1	9:B:402:HOH:O	2.12	0.67
1:B:262:GLN:HG2	9:B:476:HOH:O	1.95	0.66
1:A:223:LYS:HD2	9:A:550:HOH:O	1.96	0.66
2:B:302:CA:CA	9:B:403:HOH:O	1.73	0.65
1:B:12:LEU:HG	7:B:303:PG4:H31	1.80	0.64
1:A:83:HIS:HE1	9:A:546:HOH:O	1.81	0.63
1:A:55:GLN:HG2	9:A:406:HOH:O	2.00	0.62
1:A:76[B]:MET:HB2	3:A:303:PGE:C4	2.31	0.61
1:A:9:ILE:HD11	3:A:306:PGE:H22	1.81	0.61
1:A:194[B]:LYS:HE3	1:A:196:GLN:OE1	2.01	0.60
5:A:307:PG0:H22	1:B:182:VAL:HA	1.84	0.60
1:B:11:LYS:HG2	7:B:303:PG4:H12	1.83	0.59
1:A:76[A]:MET:HB2	3:A:303:PGE:H42	1.84	0.59
1:A:76[A]:MET:H	3:A:303:PGE:C4	2.15	0.59
1:A:76[B]:MET:H	3:A:303:PGE:C4	2.15	0.59
3:A:304:PGE:H62	3:A:304:PGE:H2	1.85	0.59
1:B:47[B]:ASP:OD2	9:B:403:HOH:O	2.16	0.59
1:A:64:GLU:HB2	3:A:306:PGE:H52	1.85	0.58
1:A:127:LYS:HE3	9:B:566:HOH:O	2.03	0.58
1:A:191:ARG:HH22	5:A:307:PG0:H32	1.68	0.58
1:B:34:GLU:HG3	1:B:42:LEU:HD11	1.86	0.57
1:B:78:THR:CG2	1:B:80:GLU:H	2.18	0.57
1:B:82:ASN:ND2	9:B:408:HOH:O	2.30	0.56

Continued on next page...

*Continued from previous page...*

Atom-1	Atom-2	Interatomic distance (Å)	Clash overlap (Å)
1:A:76[B]:MET:CA	1:A:76[B]:MET:CE	2.85	0.54
1:B:12:LEU:HG	7:B:303:PG4:C3	2.39	0.53
1:A:83:HIS:CE1	3:A:306:PGE:H42	2.44	0.53
1:A:76[A]:MET:HB2	3:A:303:PGE:C4	2.39	0.52
1:B:167:ASP:OD2	1:B:264:TYR:OH	2.27	0.52
1:A:64:GLU:CD	3:A:306:PGE:H5	2.30	0.52
1:B:11:LYS:HG2	7:B:303:PG4:C1	2.40	0.52
1:B:63:PRO:N	1:B:64:GLU:OE1	2.43	0.52
5:A:307:PG0:C2	1:B:182:VAL:HA	2.40	0.51
1:A:249:GLU:HG3	9:A:544:HOH:O	2.11	0.50
1:B:78:THR:HG23	1:B:80:GLU:H	1.76	0.49
1:A:72:LYS:NZ	3:A:303:PGE:H3	2.27	0.49
1:A:65:HIS:HE2	3:A:306:PGE:H4	1.78	0.48
1:B:1:MET:N	9:B:418:HOH:O	2.48	0.47
1:B:203:THR:H	6:B:304:NAP:H72N	1.63	0.47
1:A:76[B]:MET:HA	1:A:76[B]:MET:HE2	1.97	0.46
1:A:109:TYR:OH	3:A:306:PGE:C1	2.63	0.46
1:B:71:GLU:HG2	9:B:445:HOH:O	2.15	0.46
1:B:43:VAL:HG11	1:B:93:THR:HG23	1.98	0.46
1:A:72:LYS:HZ1	3:A:303:PGE:C3	2.30	0.45
1:B:64:GLU:HG2	1:B:65:HIS:HD2	1.81	0.45
1:A:223:LYS:CD	9:A:550:HOH:O	2.62	0.44
1:A:83:HIS:ND1	3:A:306:PGE:H42	2.32	0.44
1:B:48:LYS:HA	1:B:71:GLU:HG3	2.00	0.44
3:A:303:PGE:H1	9:A:497:HOH:O	2.18	0.44
1:A:182:VAL:HG22	5:A:307:PG0:C1	2.48	0.43
1:A:101:GLU:OE2	1:A:125:HIS:HE1	2.01	0.43
6:A:308:NAP:PN	6:A:308:NAP:H6N	2.59	0.42
6:B:304:NAP:O2X	6:B:304:NAP:H8A	2.19	0.42
1:B:38:HIS:CD2	9:B:409:HOH:O	2.72	0.42
1:B:64:GLU:N	1:B:64:GLU:CD	2.50	0.42
1:A:75:ALA:HB3	3:A:303:PGE:O4	2.20	0.42
1:B:11:LYS:HD2	7:B:303:PG4:H61	2.01	0.42
1:B:238:ALA:HB1	1:B:239:PRO:HD2	2.00	0.42
1:A:234:HIS:ND1	9:A:401:HOH:O	2.37	0.41
1:A:252:LEU:HA	1:A:252:LEU:HD23	1.86	0.41
1:B:25:PRO:O	1:B:29:MET:HG2	2.20	0.41
1:B:116:MET:CE	1:B:133:ARG:HE	2.33	0.41
1:A:65:HIS:HE2	3:A:306:PGE:C4	2.34	0.41
1:B:62:PHE:HB3	1:B:65:HIS:CG	2.56	0.40
1:A:95:ASN:HB3	1:A:101:GLU:O	2.22	0.40

*Continued on next page...*

*Continued from previous page...*

Atom-1	Atom-2	Interatomic distance (Å)	Clash overlap (Å)
1:B:12:LEU:CG	7:B:303:PG4:H31	2.49	0.40

There are no symmetry-related clashes.

## 5.3 Torsion angles [i](#)

### 5.3.1 Protein backbone [i](#)

In the following table, the Percentiles column shows the percent Ramachandran outliers of the chain as a percentile score with respect to all X-ray entries followed by that with respect to entries of similar resolution.

The Analysed column shows the number of residues for which the backbone conformation was analysed, and the total number of residues.

Mol	Chain	Analysed	Favoured	Allowed	Outliers	Percentiles	
1	A	256/265 (97%)	255 (100%)	1 (0%)	0	100	100
1	B	267/265 (101%)	265 (99%)	2 (1%)	0	100	100
All	All	523/530 (99%)	520 (99%)	3 (1%)	0	100	100

There are no Ramachandran outliers to report.

### 5.3.2 Protein sidechains [i](#)

In the following table, the Percentiles column shows the percent sidechain outliers of the chain as a percentile score with respect to all X-ray entries followed by that with respect to entries of similar resolution.

The Analysed column shows the number of residues for which the sidechain conformation was analysed, and the total number of residues.

Mol	Chain	Analysed	Rotameric	Outliers	Percentiles	
1	A	223/232 (96%)	220 (99%)	3 (1%)	69	81
1	B	233/232 (100%)	225 (97%)	8 (3%)	37	47
All	All	456/464 (98%)	445 (98%)	11 (2%)	47	62

All (11) residues with a non-rotameric sidechain are listed below:

Mol	Chain	Res	Type
1	A	1	MET
1	A	20	ILE
1	A	240	PHE
1	B	1	MET
1	B	20	ILE
1	B	78	THR
1	B	157	ILE
1	B	163	VAL
1	B	240	PHE
1	B	253	LYS
1	B	265	ARG

Some sidechains can be flipped to improve hydrogen bonding and reduce clashes. All (5) such sidechains are listed below:

Mol	Chain	Res	Type
1	A	53	GLN
1	A	83	HIS
1	A	125	HIS
1	B	79	ASN
1	B	100	GLN

### 5.3.3 RNA [i](#)

There are no RNA molecules in this entry.

## 5.4 Non-standard residues in protein, DNA, RNA chains [i](#)

There are no non-standard protein/DNA/RNA residues in this entry.

## 5.5 Carbohydrates [i](#)

There are no carbohydrates in this entry.

## 5.6 Ligand geometry [i](#)

Of 14 ligands modelled in this entry, 5 are monoatomic - leaving 9 for Mogul analysis.

In the following table, the Counts columns list the number of bonds (or angles) for which Mogul statistics could be retrieved, the number of bonds (or angles) that are observed in the model and the number of bonds (or angles) that are defined in the Chemical Component Dictionary. The

Link column lists molecule types, if any, to which the group is linked. The Z score for a bond length (or angle) is the number of standard deviations the observed value is removed from the expected value. A bond length (or angle) with  $|Z| > 2$  is considered an outlier worth inspection. RMSZ is the root-mean-square of all Z scores of the bond lengths (or angles).

Mol	Type	Chain	Res	Link	Bond lengths			Bond angles		
					Counts	RMSZ	# Z  > 2	Counts	RMSZ	# Z  > 2
7	PG4	B	303	-	12,12,12	0.79	0	11,11,11	0.89	0
6	NAP	A	308	2	45,52,52	1.46	7 (15%)	56,80,80	1.61	10 (17%)
3	PGE	A	304	-	9,9,9	1.11	0	8,8,8	1.85	2 (25%)
6	NAP	B	304	2	45,52,52	1.23	5 (11%)	56,80,80	1.58	9 (16%)
4	GOL	A	305	-	5,5,5	0.34	0	5,5,5	0.87	0
4	GOL	B	305	-	5,5,5	0.53	0	5,5,5	1.14	0
5	PG0	A	307	-	7,7,7	0.94	0	6,6,6	2.18	2 (33%)
3	PGE	A	303	-	9,9,9	0.58	0	8,8,8	1.11	0
3	PGE	A	306	-	9,9,9	0.60	0	8,8,8	1.38	1 (12%)

In the following table, the Chirals column lists the number of chiral outliers, the number of chiral centers analysed, the number of these observed in the model and the number defined in the Chemical Component Dictionary. Similar counts are reported in the Torsion and Rings columns. '-' means no outliers of that kind were identified.

Mol	Type	Chain	Res	Link	Chirals	Torsions	Rings
7	PG4	B	303	-	-	2/10/10/10	-
6	NAP	A	308	2	-	5/31/67/67	0/5/5/5
3	PGE	A	304	-	-	3/7/7/7	-
6	NAP	B	304	2	-	2/31/67/67	0/5/5/5
4	GOL	A	305	-	-	0/4/4/4	-
4	GOL	B	305	-	-	2/4/4/4	-
5	PG0	A	307	-	-	2/5/5/5	-
3	PGE	A	303	-	-	5/7/7/7	-
3	PGE	A	306	-	-	5/7/7/7	-

All (12) bond length outliers are listed below:

Mol	Chain	Res	Type	Atoms	Z	Observed(Å)	Ideal(Å)
6	A	308	NAP	O4D-C1D	4.06	1.46	1.41
6	A	308	NAP	P2B-O2B	3.17	1.65	1.59
6	B	304	NAP	O4B-C1B	3.08	1.45	1.41
6	A	308	NAP	O4B-C1B	3.04	1.45	1.41
6	A	308	NAP	C2A-N3A	2.56	1.36	1.32
6	A	308	NAP	C2N-C3N	2.55	1.43	1.39

Continued on next page...

*Continued from previous page...*

Mol	Chain	Res	Type	Atoms	Z	Observed(Å)	Ideal(Å)
6	A	308	NAP	C7N-N7N	2.49	1.37	1.33
6	B	304	NAP	C5A-C4A	2.47	1.47	1.40
6	B	304	NAP	P2B-O2B	2.41	1.63	1.59
6	A	308	NAP	C8A-N7A	2.31	1.38	1.34
6	B	304	NAP	PN-O2N	-2.26	1.44	1.55
6	B	304	NAP	C2A-N3A	2.23	1.35	1.32

All (24) bond angle outliers are listed below:

Mol	Chain	Res	Type	Atoms	Z	Observed(°)	Ideal(°)
6	B	304	NAP	C1B-N9A-C4A	-5.39	117.17	126.64
6	A	308	NAP	PN-O3-PA	-4.68	116.77	132.83
6	A	308	NAP	C6N-N1N-C2N	-4.42	117.94	121.97
5	A	307	PG0	O1-C3-C4	4.33	129.91	110.39
6	B	304	NAP	O7N-C7N-C3N	-3.74	115.16	119.63
6	B	304	NAP	N3A-C2A-N1A	-3.62	123.03	128.68
6	A	308	NAP	C3D-C2D-C1D	3.14	105.71	100.98
6	B	304	NAP	O2B-P2B-O1X	-3.13	97.31	109.39
6	B	304	NAP	C6N-N1N-C2N	-3.09	119.16	121.97
6	A	308	NAP	C1B-N9A-C4A	-3.02	121.34	126.64
6	A	308	NAP	O3X-P2B-O2X	2.90	118.73	107.64
6	A	308	NAP	O4B-C1B-C2B	2.90	111.61	106.59
3	A	304	PGE	C3-O2-C2	2.86	125.67	113.29
6	B	304	NAP	O2D-C2D-C1D	2.69	120.79	110.85
5	A	307	PG0	C2-O1-C3	-2.67	101.73	113.29
3	A	304	PGE	O2-C3-C4	2.65	122.36	110.39
6	B	304	NAP	O5D-C5D-C4D	2.52	117.65	108.99
6	B	304	NAP	O7N-C7N-N7N	2.35	125.92	122.58
6	B	304	NAP	O2A-PA-O5B	2.32	118.53	107.75
3	A	306	PGE	C5-O3-C4	-2.32	103.24	113.29
6	A	308	NAP	C5N-C4N-C3N	-2.31	117.61	120.34
6	A	308	NAP	C4A-C5A-N7A	-2.30	107.01	109.40
6	A	308	NAP	C3N-C7N-N7N	-2.21	115.09	117.75
6	A	308	NAP	C3B-C2B-C1B	-2.13	98.89	102.89

There are no chirality outliers.

All (26) torsion outliers are listed below:

Mol	Chain	Res	Type	Atoms
6	A	308	NAP	C5D-O5D-PN-O3
6	A	308	NAP	O4D-C4D-C5D-O5D
3	A	304	PGE	C4-C3-O2-C2

*Continued on next page...*

*Continued from previous page...*

Mol	Chain	Res	Type	Atoms
6	A	308	NAP	C3D-C4D-C5D-O5D
6	A	308	NAP	C4D-C5D-O5D-PN
3	A	306	PGE	O1-C1-C2-O2
3	A	306	PGE	O2-C3-C4-O3
7	B	303	PG4	O4-C7-C8-O5
3	A	306	PGE	O3-C5-C6-O4
3	A	303	PGE	O1-C1-C2-O2
5	A	307	PG0	O1-C3-C4-O2
3	A	303	PGE	O2-C3-C4-O3
6	B	304	NAP	PA-O3-PN-O5D
3	A	303	PGE	C6-C5-O3-C4
3	A	306	PGE	C4-C3-O2-C2
4	B	305	GOL	C1-C2-C3-O3
6	A	308	NAP	C5D-O5D-PN-O1N
3	A	303	PGE	C3-C4-O3-C5
3	A	304	PGE	O1-C1-C2-O2
7	B	303	PG4	C3-C4-O3-C5
3	A	304	PGE	C3-C4-O3-C5
3	A	306	PGE	C3-C4-O3-C5
4	B	305	GOL	O2-C2-C3-O3
3	A	303	PGE	C1-C2-O2-C3
6	B	304	NAP	PA-O3-PN-O2N
5	A	307	PG0	C1-C2-O1-C3

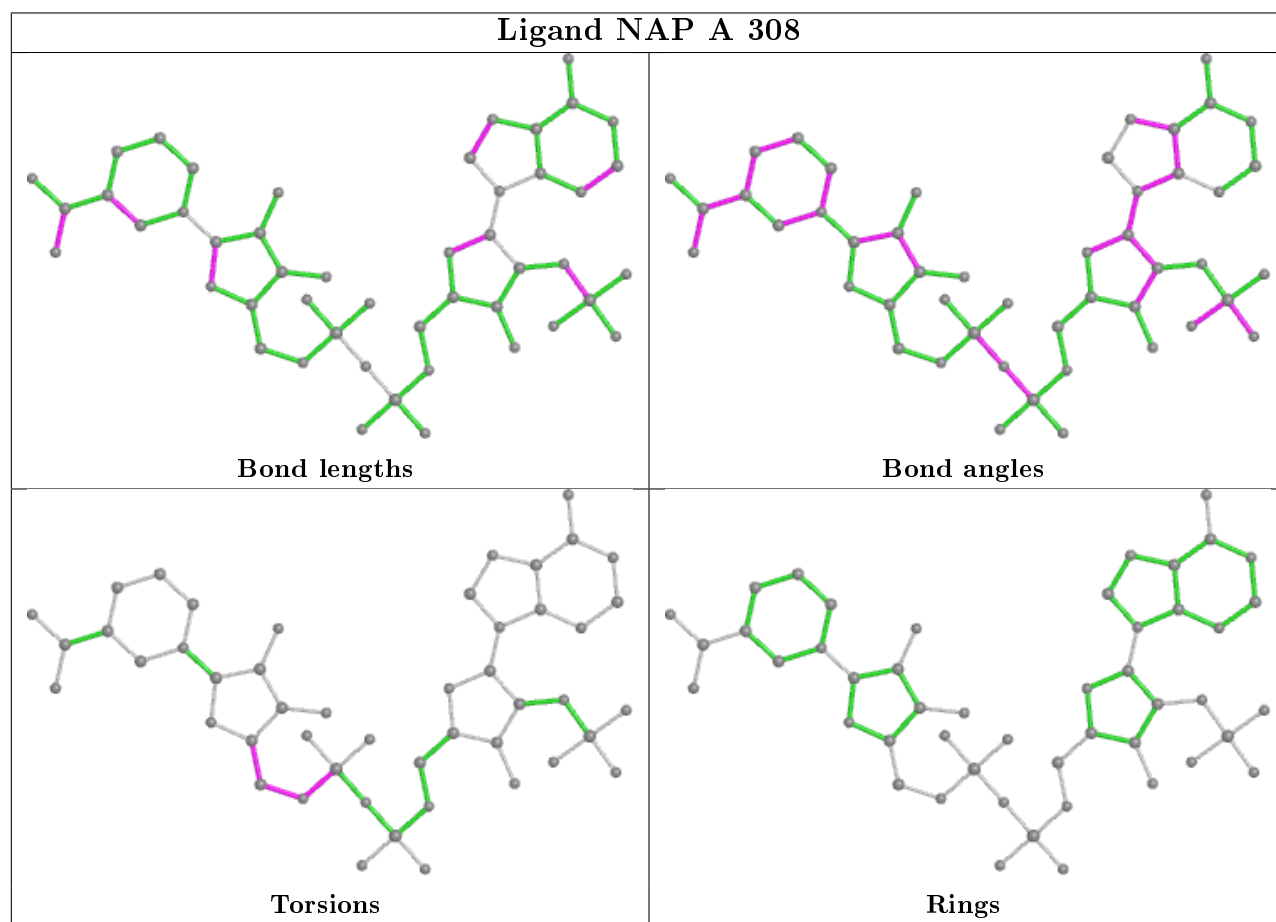
There are no ring outliers.

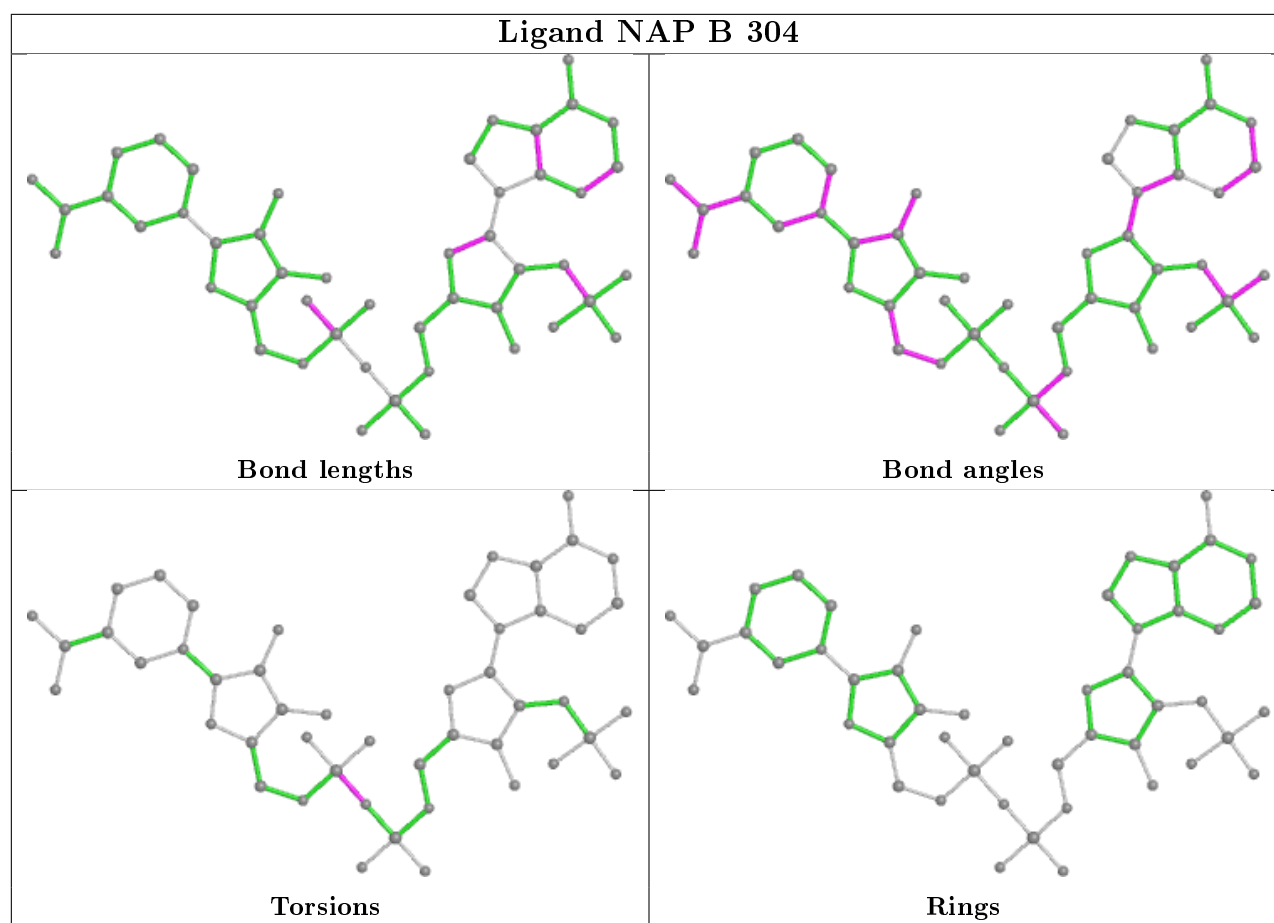
7 monomers are involved in 44 short contacts:

Mol	Chain	Res	Type	Clashes	Symm-Clashes
7	B	303	PG4	6	0
6	A	308	NAP	3	0
3	A	304	PGE	1	0
6	B	304	NAP	2	0
5	A	307	PG0	5	0
3	A	303	PGE	15	0
3	A	306	PGE	12	0

The following is a two-dimensional graphical depiction of Mogul quality analysis of bond lengths, bond angles, torsion angles, and ring geometry for all instances of the Ligand of Interest. In addition, ligands with molecular weight > 250 and outliers as shown on the validation Tables will also be included. For torsion angles, if less than 5% of the Mogul distribution of torsion angles is within 10 degrees of the torsion angle in question, then that torsion angle is considered an outlier. Any bond that is central to one or more torsion angles identified as an outlier by Mogul will be

highlighted in the graph. For rings, the root-mean-square deviation (RMSD) between the ring in question and similar rings identified by Mogul is calculated over all ring torsion angles. If the average RMSD is greater than 60 degrees and the minimal RMSD between the ring in question and any Mogul-identified rings is also greater than 60 degrees, then that ring is considered an outlier. The outliers are highlighted in purple. The color gray indicates Mogul did not find sufficient equivalents in the CSD to analyse the geometry.





## 5.7 Other polymers [i](#)

There are no such residues in this entry.

## 5.8 Polymer linkage issues [i](#)

There are no chain breaks in this entry.

## 6 Fit of model and data [i](#)

### 6.1 Protein, DNA and RNA chains [i](#)

In the following table, the column labelled ‘#RSRZ> 2’ contains the number (and percentage) of RSRZ outliers, followed by percent RSRZ outliers for the chain as percentile scores relative to all X-ray entries and entries of similar resolution. The OWAB column contains the minimum, median, 95<sup>th</sup> percentile and maximum values of the occupancy-weighted average B-factor per residue. The column labelled ‘Q< 0.9’ lists the number of (and percentage) of residues with an average occupancy less than 0.9.

Mol	Chain	Analysed	<RSRZ>	#RSRZ>2	OWAB(Å <sup>2</sup> )	Q<0.9
1	A	256/265 (96%)	-0.39	5 (1%) 65 63	11, 20, 42, 91	0
1	B	265/265 (100%)	-0.43	4 (1%) 73 72	11, 20, 43, 92	0
All	All	521/530 (98%)	-0.41	9 (1%) 70 68	11, 20, 42, 92	0

All (9) RSRZ outliers are listed below:

Mol	Chain	Res	Type	RSRZ
1	A	264	TYR	8.1
1	B	265	ARG	5.1
1	A	265	ARG	4.7
1	B	264	TYR	3.8
1	A	33	THR	3.2
1	B	38	HIS	2.8
1	A	32	THR	2.5
1	A	237	GLY	2.3
1	B	63	PRO	2.1

### 6.2 Non-standard residues in protein, DNA, RNA chains [i](#)

There are no non-standard protein/DNA/RNA residues in this entry.

### 6.3 Carbohydrates [i](#)

There are no carbohydrates in this entry.

### 6.4 Ligands [i](#)

In the following table, the Atoms column lists the number of modelled atoms in the group and the number defined in the chemical component dictionary. The B-factors column lists the minimum,

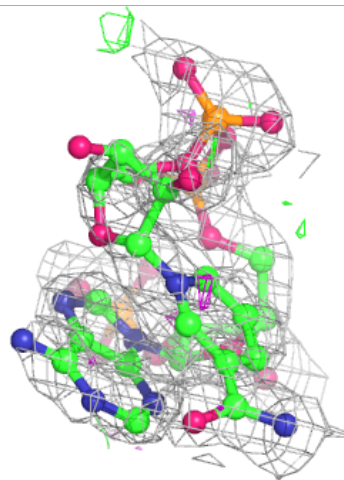
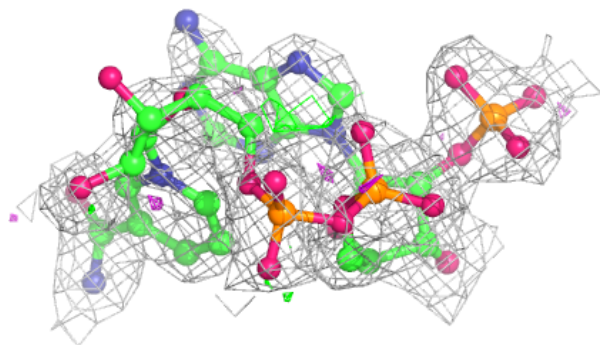
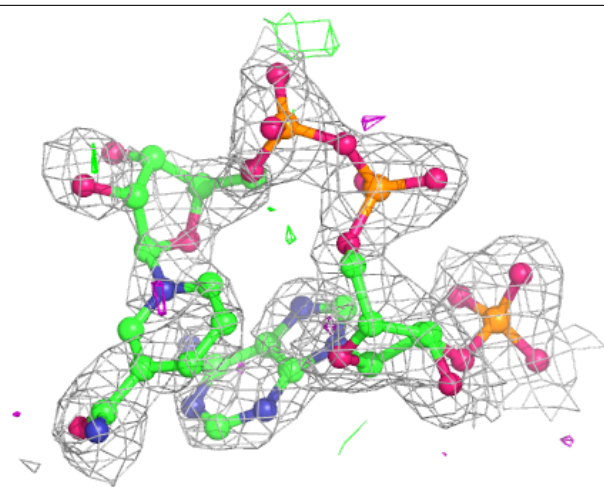
median, 95<sup>th</sup> percentile and maximum values of B factors of atoms in the group. The column labelled 'Q< 0.9' lists the number of atoms with occupancy less than 0.9.

Mol	Type	Chain	Res	Atoms	RSCC	RSR	B-factors(Å <sup>2</sup> )	Q<0.9
4	GOL	A	305	6/6	0.75	0.24	35,39,41,41	0
4	GOL	B	305	6/6	0.77	0.26	44,48,51,52	0
7	PG4	B	303	13/13	0.78	0.39	36,46,55,56	0
3	PGE	A	304	10/10	0.80	0.38	32,47,54,54	0
3	PGE	A	306	10/10	0.88	0.38	18,33,39,41	0
5	PG0	A	307	8/8	0.90	0.24	17,24,31,36	0
6	NAP	B	304	48/48	0.90	0.21	20,40,57,68	5
3	PGE	A	303	10/10	0.91	0.25	26,33,36,38	0
6	NAP	A	308	48/48	0.93	0.16	14,27,70,75	0
2	CA	B	301	1/1	0.98	0.08	27,27,27,27	0
2	CA	A	302	1/1	0.99	0.03	13,13,13,13	0
2	CA	A	301	1/1	0.99	0.04	16,16,16,16	0
8	CL	B	306	1/1	0.99	0.04	25,25,25,25	0
2	CA	B	302	1/1	0.99	0.03	29,29,29,29	0

The following is a graphical depiction of the model fit to experimental electron density of all instances of the Ligand of Interest. In addition, ligands with molecular weight > 250 and outliers as shown on the geometry validation Tables will also be included. Each fit is shown from different orientation to approximate a three-dimensional view.

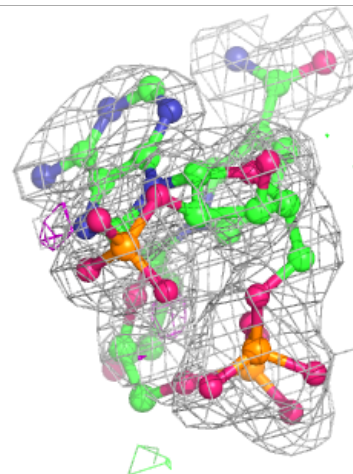
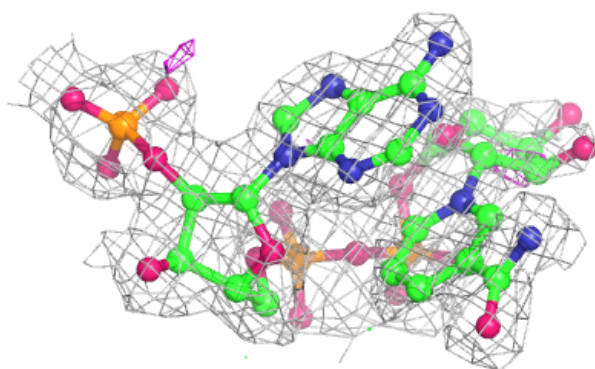
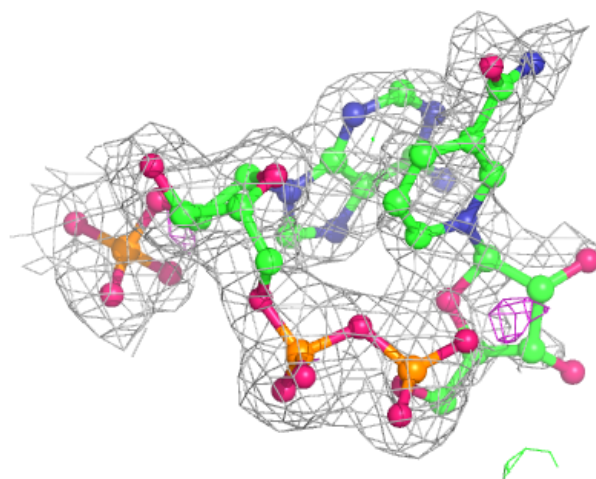
**Electron density around NAP B 304:**

$2mF_o-DF_c$  (at 0.7 rmsd) in gray  
 $mF_o-DF_c$  (at 3 rmsd) in purple (negative)  
and green (positive)



**Electron density around NAP A 308:**

$2mF_o-DF_c$  (at 0.7 rmsd) in gray  
 $mF_o-DF_c$  (at 3 rmsd) in purple (negative)  
and green (positive)



## 6.5 Other polymers [i](#)

There are no such residues in this entry.