



Full wwPDB X-ray Structure Validation Report ⓘ

Oct 12, 2021 – 02:55 PM EDT

PDB ID : 2EZ4
Title : Pyruvate oxidase variant F479W
Authors : Wille, G.; Meyer, D.; Steinmetz, A.; Hinze, E.; Golbik, R.; Tittmann, K.
Deposited on : 2005-11-10
Resolution : 2.03 Å(reported)

This is a Full wwPDB X-ray Structure Validation Report for a publicly released PDB entry.

We welcome your comments at validation@mail.wwpdb.org

A user guide is available at

<https://www.wwpdb.org/validation/2017/XrayValidationReportHelp>

with specific help available everywhere you see the ⓘ symbol.

The following versions of software and data (see [references ⓘ](#)) were used in the production of this report:

MolProbity : 4.02b-467
Mogul : 1.8.5 (274361), CSD as541be (2020)
Xtriage (Phenix) : 1.13
EDS : 2.23.2
buster-report : 1.1.7 (2018)
Percentile statistics : 20191225.v01 (using entries in the PDB archive December 25th 2019)
Refmac : 5.8.0158
CCP4 : 7.0.044 (Gargrove)
Ideal geometry (proteins) : Engh & Huber (2001)
Ideal geometry (DNA, RNA) : Parkinson et al. (1996)
Validation Pipeline (wwPDB-VP) : 2.23.2

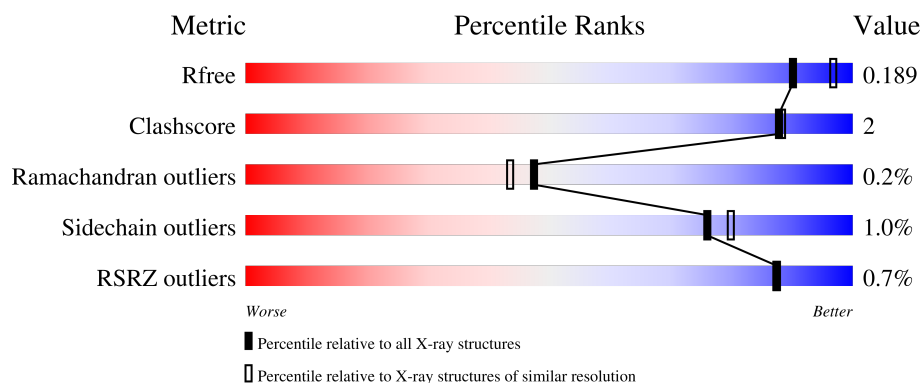
1 Overall quality at a glance

The following experimental techniques were used to determine the structure:

X-RAY DIFFRACTION

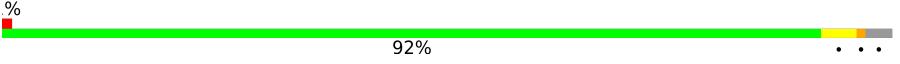

The reported resolution of this entry is 2.03 Å.

Percentile scores (ranging between 0-100) for global validation metrics of the entry are shown in the following graphic. The table shows the number of entries on which the scores are based.



Metric	Whole archive (#Entries)	Similar resolution (#Entries, resolution range(Å))
R_{free}	130704	10434 (2.04-2.00)
Clashscore	141614	11643 (2.04-2.00)
Ramachandran outliers	138981	11493 (2.04-2.00)
Sidechain outliers	138945	11492 (2.04-2.00)
RSRZ outliers	127900	10220 (2.04-2.00)

The table below summarises the geometric issues observed across the polymeric chains and their fit to the electron density. The red, orange, yellow and green segments of the lower bar indicate the fraction of residues that contain outliers for ≥ 3 , 2, 1 and 0 types of geometric quality criteria respectively. A grey segment represents the fraction of residues that are not modelled. The numeric value for each fraction is indicated below the corresponding segment, with a dot representing fractions $\leq 5\%$. The upper red bar (where present) indicates the fraction of residues that have poor fit to the electron density. The numeric value is given above the bar.

Mol	Chain	Length	Quality of chain
1	A	603	 92%
1	B	603	 92%

2 Entry composition

There are 7 unique types of molecules in this entry. The entry contains 10183 atoms, of which 0 are hydrogens and 0 are deuteriums.

In the tables below, the ZeroOcc column contains the number of atoms modelled with zero occupancy, the AltConf column contains the number of residues with at least one atom in alternate conformation and the Trace column contains the number of residues modelled with at most 2 atoms.

- Molecule 1 is a protein called Pyruvate oxidase.

Mol	Chain	Residues	Atoms					ZeroOcc	AltConf	Trace
1	A	585	Total	C	N	O	S	0	0	0
			4523	2868	780	861	14			
1	B	585	Total	C	N	O	S	0	0	0
			4523	2868	780	861	14			

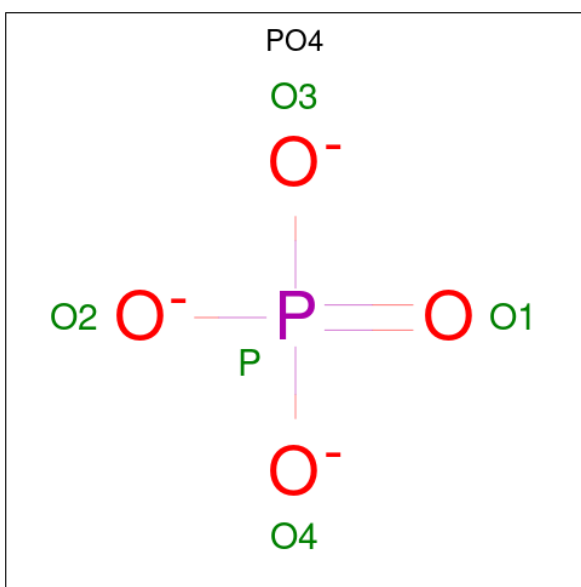
There are 4 discrepancies between the modelled and reference sequences:

Chain	Residue	Modelled	Actual	Comment	Reference
A	479	TRP	PHE	engineered mutation	UNP P37063
A	561	MET	THR	see remark 999	UNP P37063
B	479	TRP	PHE	engineered mutation	UNP P37063
B	561	MET	THR	see remark 999	UNP P37063

- Molecule 2 is MAGNESIUM ION (three-letter code: MG) (formula: Mg).

Mol	Chain	Residues	Atoms		ZeroOcc	AltConf
2	A	1	Total	Mg	0	0
			1	1		
2	B	1	Total	Mg	0	0
			1	1		

- Molecule 3 is PHOSPHATE ION (three-letter code: PO4) (formula: O₄P).

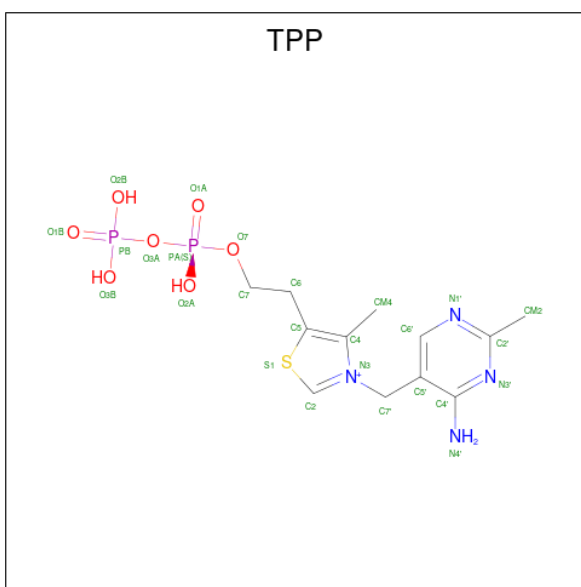


Mol	Chain	Residues	Atoms			ZeroOcc	AltConf
3	A	1	Total	O	P	0	0
			5	4	1		
3	B	1	Total	O	P	0	0
			5	4	1		

- Molecule 4 is SODIUM ION (three-letter code: NA) (formula: Na).

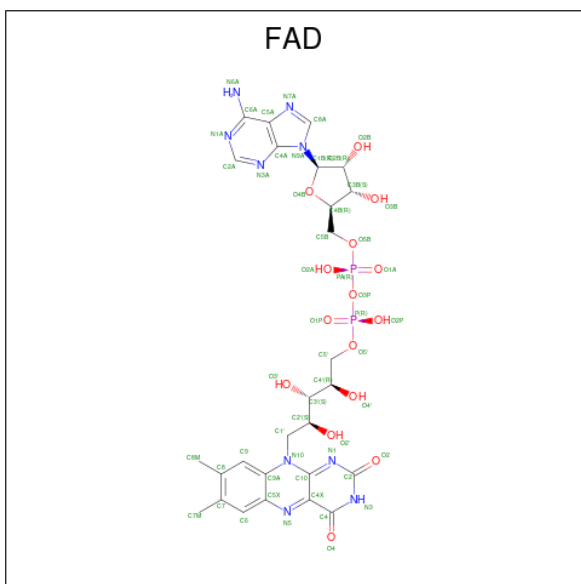
Mol	Chain	Residues	Atoms		ZeroOcc	AltConf
4	A	1	Total	Na	0	0
			1	1		
4	B	1	Total	Na	0	0
			1	1		

- Molecule 5 is THIAMINE DIPHOSPHATE (three-letter code: TPP) (formula: C₁₂H₁₉N₄O₇P₂S).



Mol	Chain	Residues	Atoms						ZeroOcc	AltConf
5	A	1	Total 26	C 12	N 4	O 7	P 2	S 1	0	0
5	B	1	Total 26	C 12	N 4	O 7	P 2	S 1	0	0

- Molecule 6 is FLAVIN-ADENINE DINUCLEOTIDE (three-letter code: FAD) (formula: $\text{C}_{27}\text{H}_{33}\text{N}_9\text{O}_{15}\text{P}_2$).



Mol	Chain	Residues	Atoms					ZeroOcc	AltConf
6	A	1	Total	C	N	O	P	0	0
			53	27	9	15	2		

Continued on next page...

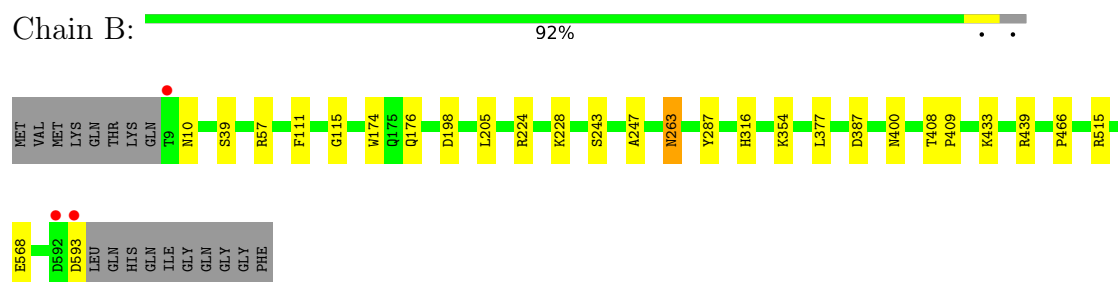
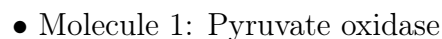
Continued from previous page...

Mol	Chain	Residues	Atoms					ZeroOcc	AltConf
6	B	1	Total	C	N	O	P	0	0
			53	27	9	15	2		

- Molecule 7 is water.

Mol	Chain	Residues	Atoms		ZeroOcc	AltConf
7	A	488	Total	O	0	0
			488	488		
7	B	477	Total	O	0	0
			477	477		

- Molecule 1: Pyruvate oxidase



4 Data and refinement statistics

Property	Value	Source
Space group	C 2 2 21	Depositor
Cell constants a, b, c, α , β , γ	118.35Å 154.18Å 165.43Å 90.00° 90.00° 90.00°	Depositor
Resolution (Å)	29.59 – 2.03 29.59 – 2.03	Depositor EDS
% Data completeness (in resolution range)	94.5 (29.59-2.03) 94.6 (29.59-2.03)	Depositor EDS
R_{merge}	0.11	Depositor
R_{sym}	(Not available)	Depositor
$\langle I/\sigma(I) \rangle$ ¹	2.83 (at 2.03Å)	Xtriage
Refinement program	REFMAC refmac_5.2.0005	Depositor
R, R_{free}	0.156 , 0.186 0.158 , 0.189	Depositor DCC
R_{free} test set	1884 reflections (2.03%)	wwPDB-VP
Wilson B-factor (Å ²)	16.7	Xtriage
Anisotropy	0.042	Xtriage
Bulk solvent k_{sol} (e/Å ³), B_{sol} (Å ²)	0.37 , 47.0	EDS
L-test for twinning ²	$\langle L \rangle = 0.49$, $\langle L^2 \rangle = 0.32$	Xtriage
Estimated twinning fraction	No twinning to report.	Xtriage
F_o, F_c correlation	0.96	EDS
Total number of atoms	10183	wwPDB-VP
Average B, all atoms (Å ²)	16.0	wwPDB-VP

Xtriage's analysis on translational NCS is as follows: *The largest off-origin peak in the Patterson function is 3.47% of the height of the origin peak. No significant pseudotranslation is detected.*

¹Intensities estimated from amplitudes.

²Theoretical values of $\langle |L| \rangle$, $\langle L^2 \rangle$ for acentric reflections are 0.5, 0.333 respectively for untwinned datasets, and 0.375, 0.2 for perfectly twinned datasets.

5 Model quality [i](#)

5.1 Standard geometry [i](#)

Bond lengths and bond angles in the following residue types are not validated in this section: FAD, PO4, NA, MG, TPP

The Z score for a bond length (or angle) is the number of standard deviations the observed value is removed from the expected value. A bond length (or angle) with $|Z| > 5$ is considered an outlier worth inspection. RMSZ is the root-mean-square of all Z scores of the bond lengths (or angles).

Mol	Chain	Bond lengths		Bond angles	
		RMSZ	# Z >5	RMSZ	# Z >5
1	A	0.58	0/4619	0.63	2/6291 (0.0%)
1	B	0.56	0/4619	0.63	0/6291
All	All	0.57	0/9238	0.63	2/12582 (0.0%)

There are no bond length outliers.

All (2) bond angle outliers are listed below:

Mol	Chain	Res	Type	Atoms	Z	Observed(°)	Ideal(°)
1	A	283	VAL	CB-CA-C	-6.88	98.33	111.40
1	A	515	ARG	NE-CZ-NH2	-5.69	117.46	120.30

There are no chirality outliers.

There are no planarity outliers.

5.2 Too-close contacts [i](#)

In the following table, the Non-H and H(model) columns list the number of non-hydrogen atoms and hydrogen atoms in the chain respectively. The H(added) column lists the number of hydrogen atoms added and optimized by MolProbity. The Clashes column lists the number of clashes within the asymmetric unit, whereas Symm-Clashes lists symmetry-related clashes.

Mol	Chain	Non-H	H(model)	H(added)	Clashes	Symm-Clashes
1	A	4523	0	4468	19	0
1	B	4523	0	4468	17	0
2	A	1	0	0	0	0
2	B	1	0	0	0	0
3	A	5	0	0	0	0
3	B	5	0	0	0	0
4	A	1	0	0	0	0

Continued on next page...

Continued from previous page...

Mol	Chain	Non-H	H(model)	H(added)	Clashes	Symm-Clashes
4	B	1	0	0	0	0
5	A	26	0	16	0	0
5	B	26	0	16	0	0
6	A	53	0	31	1	0
6	B	53	0	31	0	0
7	A	488	0	0	5	0
7	B	477	0	0	6	0
All	All	10183	0	9030	37	0

The all-atom clashscore is defined as the number of clashes found per 1000 atoms (including hydrogen atoms). The all-atom clashscore for this structure is 2.

All (37) close contacts within the same asymmetric unit are listed below, sorted by their clash magnitude.

Atom-1	Atom-2	Interatomic distance (Å)	Clash overlap (Å)
1:A:91:MET:HG3	7:A:2104:HOH:O	1.73	0.86
1:B:57:ARG:HD2	7:B:1862:HOH:O	1.80	0.80
1:A:91:MET:CG	7:A:2104:HOH:O	2.35	0.71
1:B:111:PHE:CE2	1:B:115:GLY:HA3	2.34	0.63
1:A:221:ILE:O	1:A:224:ARG:HB2	1.99	0.62
1:A:111:PHE:CE2	1:A:115:GLY:HA3	2.34	0.62
1:B:224:ARG:HD2	7:B:1999:HOH:O	2.02	0.58
1:A:10:ASN:HB3	1:A:176:GLN:HE21	1.70	0.56
1:A:91:MET:HE2	7:A:2104:HOH:O	2.05	0.56
1:A:111:PHE:CD2	1:A:115:GLY:HA3	2.41	0.55
1:B:263:ASN:HB2	1:B:287:TYR:OH	2.11	0.51
1:A:421:THR:HG23	1:A:424:VAL:HG13	1.95	0.49
1:A:197:PRO:HB2	1:A:202:VAL:HG21	1.96	0.47
1:B:316:HIS:HD2	7:B:1726:HOH:O	1.98	0.46
1:B:39:SER:HB3	1:B:174:TRP:CD2	2.51	0.46
1:A:316:HIS:HD2	7:A:1679:HOH:O	1.99	0.46
1:A:316:HIS:HE1	7:A:2049:HOH:O	1.98	0.45
1:A:283:VAL:HG13	1:A:305:ILE:HB	1.99	0.45
1:A:39:SER:HB3	1:A:174:TRP:CD2	2.52	0.44
1:B:387:ASP:O	1:B:439:ARG:HD2	2.16	0.44
1:B:433:LYS:HE3	1:B:466:PRO:HD2	1.98	0.44
1:B:354:LYS:HE2	1:B:354:LYS:HB3	1.92	0.44
1:A:297:LYS:HB2	1:A:297:LYS:HE2	1.73	0.43
1:B:243:SER:HB2	1:B:247:ALA:HB3	2.01	0.43
1:A:205:LEU:C	1:A:205:LEU:HD23	2.40	0.42
1:B:316:HIS:HE1	7:B:1858:HOH:O	2.02	0.42

Continued on next page...

Continued from previous page...

Atom-1	Atom-2	Interatomic distance (Å)	Clash overlap (Å)
1:B:10:ASN:HB3	1:B:176:GLN:HE21	1.84	0.42
1:A:195:PRO:HD2	1:A:307:ILE:HG13	2.01	0.42
6:A:1617:FAD:H9	6:A:1617:FAD:H1'1	1.88	0.41
1:A:263:ASN:HB2	1:A:287:TYR:OH	2.20	0.41
1:B:224:ARG:NH1	7:B:2065:HOH:O	2.53	0.41
1:B:408:THR:HB	1:B:409:PRO:HD2	2.03	0.41
1:B:205:LEU:HD23	1:B:205:LEU:C	2.41	0.41
1:A:377:LEU:CD1	1:A:400:ASN:HB3	2.52	0.40
1:B:377:LEU:CD1	1:B:400:ASN:HB3	2.51	0.40
1:A:308:ASP:HB3	1:A:311:LYS:HG2	2.03	0.40
1:B:568:GLU:HG2	7:B:2079:HOH:O	2.21	0.40

There are no symmetry-related clashes.

5.3 Torsion angles [i](#)

5.3.1 Protein backbone [i](#)

In the following table, the Percentiles column shows the percent Ramachandran outliers of the chain as a percentile score with respect to all X-ray entries followed by that with respect to entries of similar resolution.

The Analysed column shows the number of residues for which the backbone conformation was analysed, and the total number of residues.

Mol	Chain	Analysed	Favoured	Allowed	Outliers	Percentiles	
1	A	583/603 (97%)	571 (98%)	11 (2%)	1 (0%)	47	43
1	B	583/603 (97%)	573 (98%)	9 (2%)	1 (0%)	47	43
All	All	1166/1206 (97%)	1144 (98%)	20 (2%)	2 (0%)	47	43

All (2) Ramachandran outliers are listed below:

Mol	Chain	Res	Type
1	B	263	ASN
1	A	263	ASN

5.3.2 Protein sidechains ⓘ

In the following table, the Percentiles column shows the percent sidechain outliers of the chain as a percentile score with respect to all X-ray entries followed by that with respect to entries of similar resolution.

The Analysed column shows the number of residues for which the sidechain conformation was analysed, and the total number of residues.

Mol	Chain	Analysed	Rotameric	Outliers	Percentiles	
1	A	470/485 (97%)	465 (99%)	5 (1%)	73	77
1	B	470/485 (97%)	466 (99%)	4 (1%)	78	82
All	All	940/970 (97%)	931 (99%)	9 (1%)	76	80

All (9) residues with a non-rotameric sidechain are listed below:

Mol	Chain	Res	Type
1	A	200	GLN
1	A	228	LYS
1	A	297	LYS
1	A	385	GLU
1	A	515	ARG
1	B	198	ASP
1	B	228	LYS
1	B	515	ARG
1	B	593	ASP

Sometimes sidechains can be flipped to improve hydrogen bonding and reduce clashes. All (15) such sidechains are listed below:

Mol	Chain	Res	Type
1	A	148	HIS
1	A	176	GLN
1	A	200	GLN
1	A	316	HIS
1	A	464	HIS
1	A	476	GLN
1	B	10	ASN
1	B	52	HIS
1	B	148	HIS
1	B	176	GLN
1	B	276	GLN
1	B	316	HIS
1	B	476	GLN

Continued on next page...

Continued from previous page...

Mol	Chain	Res	Type
1	B	489	GLN
1	B	588	GLN

5.3.3 RNA ⓘ

There are no RNA molecules in this entry.

5.4 Non-standard residues in protein, DNA, RNA chains ⓘ

There are no non-standard protein/DNA/RNA residues in this entry.

5.5 Carbohydrates ⓘ

There are no monosaccharides in this entry.

5.6 Ligand geometry ⓘ

Of 10 ligands modelled in this entry, 4 are monoatomic - leaving 6 for Mogul analysis.

In the following table, the Counts columns list the number of bonds (or angles) for which Mogul statistics could be retrieved, the number of bonds (or angles) that are observed in the model and the number of bonds (or angles) that are defined in the Chemical Component Dictionary. The Link column lists molecule types, if any, to which the group is linked. The Z score for a bond length (or angle) is the number of standard deviations the observed value is removed from the expected value. A bond length (or angle) with $|Z| > 2$ is considered an outlier worth inspection. RMSZ is the root-mean-square of all Z scores of the bond lengths (or angles).

Mol	Type	Chain	Res	Link	Bond lengths			Bond angles		
					Counts	RMSZ	# Z > 2	Counts	RMSZ	# Z > 2
6	FAD	A	1617	-	51,58,58	1.03	4 (7%)	60,89,89	1.83	12 (20%)
5	TPP	A	1616	2	22,27,27	1.54	6 (27%)	29,40,40	1.63	8 (27%)
3	PO4	A	1612	-	4,4,4	0.86	0	6,6,6	0.82	0
6	FAD	B	1619	-	51,58,58	1.05	4 (7%)	60,89,89	1.73	11 (18%)
3	PO4	B	1615	-	4,4,4	0.98	0	6,6,6	0.40	0
5	TPP	B	1618	2	22,27,27	1.35	6 (27%)	29,40,40	1.76	9 (31%)

In the following table, the Chirals column lists the number of chiral outliers, the number of chiral centers analysed, the number of these observed in the model and the number defined in the Chemical Component Dictionary. Similar counts are reported in the Torsion and Rings columns. '-' means no outliers of that kind were identified.

Mol	Type	Chain	Res	Link	Chirals	Torsions	Rings
6	FAD	B	1619	-	-	6/30/50/50	0/6/6/6
5	TPP	B	1618	2	-	3/16/17/17	0/2/2/2
6	FAD	A	1617	-	-	5/30/50/50	0/6/6/6
5	TPP	A	1616	2	-	4/16/17/17	0/2/2/2

All (20) bond length outliers are listed below:

Mol	Chain	Res	Type	Atoms	Z	Observed(Å)	Ideal(Å)
6	A	1617	FAD	O4B-C1B	2.97	1.45	1.41
5	A	1616	TPP	C4-N3	-2.91	1.37	1.39
5	A	1616	TPP	C2'-N1'	2.86	1.39	1.34
5	A	1616	TPP	C2'-N3'	2.69	1.38	1.34
6	B	1619	FAD	C4X-N5	2.63	1.37	1.33
6	B	1619	FAD	C10-N1	2.62	1.36	1.33
5	B	1618	TPP	C2'-N1'	2.57	1.38	1.34
6	B	1619	FAD	C4-N3	2.50	1.37	1.33
5	B	1618	TPP	C4'-N3'	2.44	1.38	1.35
5	B	1618	TPP	C2'-N3'	2.44	1.38	1.34
6	A	1617	FAD	C4X-N5	2.40	1.36	1.33
5	A	1616	TPP	C6'-N1'	2.32	1.39	1.34
6	B	1619	FAD	O4B-C1B	2.31	1.44	1.41
5	A	1616	TPP	C4'-N3'	2.28	1.38	1.35
6	A	1617	FAD	C10-N1	2.16	1.36	1.33
5	B	1618	TPP	C4-N3	-2.16	1.37	1.39
5	B	1618	TPP	C6'-N1'	2.11	1.38	1.34
5	B	1618	TPP	C2-N3	2.10	1.40	1.36
6	A	1617	FAD	C2B-C1B	-2.01	1.50	1.53
5	A	1616	TPP	C6-C5	2.01	1.51	1.50

All (40) bond angle outliers are listed below:

Mol	Chain	Res	Type	Atoms	Z	Observed(°)	Ideal(°)
6	A	1617	FAD	C4-N3-C2	5.87	120.10	115.14
6	B	1619	FAD	C4-N3-C2	5.86	120.09	115.14
6	A	1617	FAD	C10-C4X-N5	-5.36	117.55	121.26
6	B	1619	FAD	N3A-C2A-N1A	-5.05	120.78	128.68
6	A	1617	FAD	N3A-C2A-N1A	-4.69	121.35	128.68
6	A	1617	FAD	C4-C4X-N5	4.35	123.57	118.60
6	B	1619	FAD	C10-C4X-N5	-4.18	118.37	121.26
5	A	1616	TPP	CM2-C2'-N1'	3.74	121.25	117.14
5	B	1618	TPP	CM2-C2'-N1'	3.68	121.19	117.14
6	B	1619	FAD	C9A-N10-C10	-3.38	117.48	121.91

Continued on next page...

Continued from previous page...

Mol	Chain	Res	Type	Atoms	Z	Observed(°)	Ideal(°)
5	A	1616	TPP	CM4-C4-N3	3.37	126.83	122.53
5	B	1618	TPP	CM4-C4-N3	3.32	126.76	122.53
6	B	1619	FAD	C1'-C2'-C3'	3.11	118.47	109.79
5	B	1618	TPP	N1'-C2'-N3'	-3.04	120.30	125.54
5	B	1618	TPP	C5'-C7'-N3	-3.04	108.21	113.28
6	B	1619	FAD	C4-C4X-N5	3.00	122.03	118.60
5	A	1616	TPP	C6'-C5'-C4'	2.99	119.79	115.72
6	A	1617	FAD	C1'-N10-C9A	2.98	120.64	118.29
6	B	1619	FAD	C4X-C4-N3	-2.92	119.44	123.43
6	A	1617	FAD	C9A-N10-C10	-2.88	118.14	121.91
6	A	1617	FAD	C9A-C5X-N5	-2.83	117.93	122.36
5	B	1618	TPP	C6'-N1'-C2'	2.64	120.46	115.96
5	B	1618	TPP	C6'-C5'-C4'	2.58	119.23	115.72
5	A	1616	TPP	C5'-C7'-N3	-2.55	109.04	113.28
5	A	1616	TPP	N1'-C2'-N3'	-2.51	121.21	125.54
6	B	1619	FAD	C1B-N9A-C4A	-2.49	122.26	126.64
5	B	1618	TPP	C5'-C6'-N1'	-2.41	119.80	123.82
6	B	1619	FAD	C1'-N10-C9A	2.41	120.19	118.29
5	B	1618	TPP	C6-C5-C4	2.40	129.36	127.43
6	B	1619	FAD	C9A-C5X-N5	-2.39	118.62	122.36
6	A	1617	FAD	C1'-C2'-C3'	2.39	116.46	109.79
6	A	1617	FAD	C1B-N9A-C4A	-2.37	122.48	126.64
6	A	1617	FAD	C4X-C4-N3	-2.34	120.24	123.43
6	A	1617	FAD	C1'-N10-C10	-2.30	116.35	118.41
5	B	1618	TPP	O3B-PB-O3A	2.29	112.31	104.64
5	A	1616	TPP	C5'-C6'-N1'	-2.19	120.17	123.82
5	A	1616	TPP	CM4-C4-C5	-2.17	122.85	127.60
6	B	1619	FAD	O2P-P-O1P	2.17	122.97	112.24
6	A	1617	FAD	C6-C5X-N5	2.12	121.38	119.05
5	A	1616	TPP	O3B-PB-O3A	2.08	111.62	104.64

There are no chirality outliers.

All (18) torsion outliers are listed below:

Mol	Chain	Res	Type	Atoms
5	A	1616	TPP	PA-O3A-PB-O2B
5	A	1616	TPP	PA-O3A-PB-O3B
5	B	1618	TPP	PA-O3A-PB-O3B
6	A	1617	FAD	P-O3P-PA-O5B
6	A	1617	FAD	C2'-C1'-N10-C9A
6	A	1617	FAD	C3'-C4'-C5'-O5'
6	B	1619	FAD	P-O3P-PA-O5B

Continued on next page...

Continued from previous page...

Mol	Chain	Res	Type	Atoms
6	B	1619	FAD	C2'-C1'-N10-C9A
6	A	1617	FAD	O4'-C4'-C5'-O5'
6	B	1619	FAD	C3'-C4'-C5'-O5'
6	B	1619	FAD	O4'-C4'-C5'-O5'
5	B	1618	TPP	PA-O3A-PB-O2B
6	B	1619	FAD	PA-O3P-P-O1P
6	A	1617	FAD	O4B-C4B-C5B-O5B
5	B	1618	TPP	PA-O3A-PB-O1B
6	B	1619	FAD	O4B-C4B-C5B-O5B
5	A	1616	TPP	PA-O3A-PB-O1B
5	A	1616	TPP	C4-C5-C6-C7

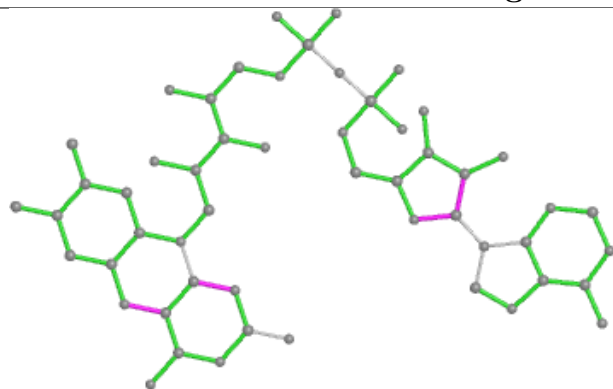
There are no ring outliers.

1 monomer is involved in 1 short contact:

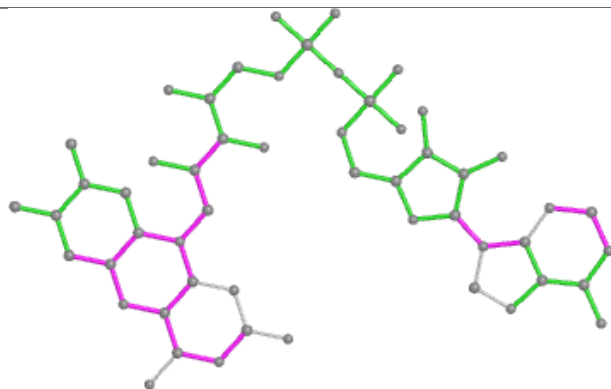
Mol	Chain	Res	Type	Clashes	Symm-Clashes
6	A	1617	FAD	1	0

The following is a two-dimensional graphical depiction of Mogul quality analysis of bond lengths, bond angles, torsion angles, and ring geometry for all instances of the Ligand of Interest. In addition, ligands with molecular weight > 250 and outliers as shown on the validation Tables will also be included. For torsion angles, if less than 5% of the Mogul distribution of torsion angles is within 10 degrees of the torsion angle in question, then that torsion angle is considered an outlier. Any bond that is central to one or more torsion angles identified as an outlier by Mogul will be highlighted in the graph. For rings, the root-mean-square deviation (RMSD) between the ring in question and similar rings identified by Mogul is calculated over all ring torsion angles. If the average RMSD is greater than 60 degrees and the minimal RMSD between the ring in question and any Mogul-identified rings is also greater than 60 degrees, then that ring is considered an outlier. The outliers are highlighted in purple. The color gray indicates Mogul did not find sufficient equivalents in the CSD to analyse the geometry.

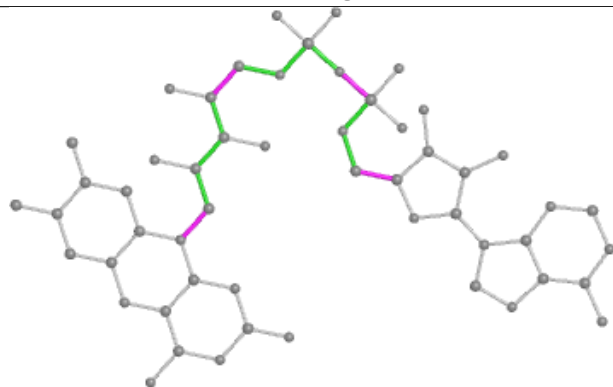
Ligand FAD A 1617



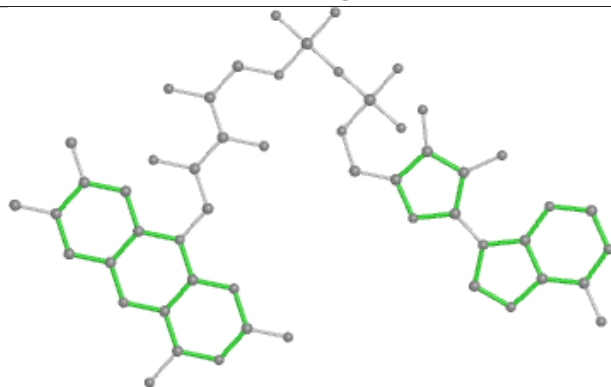
Bond lengths



Bond angles

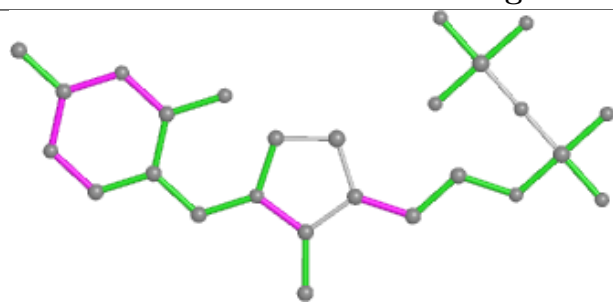


Torsions

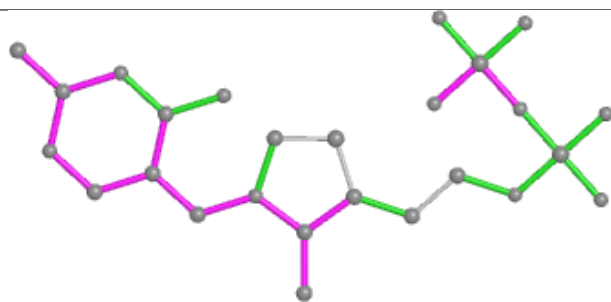


Rings

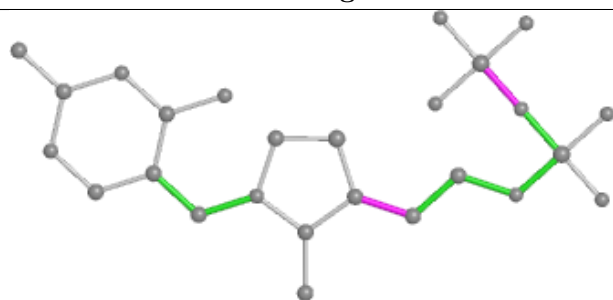
Ligand TPP A 1616



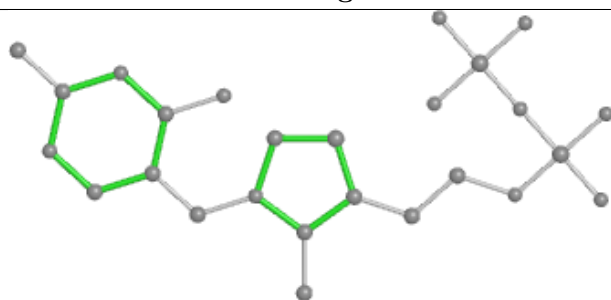
Bond lengths



Bond angles

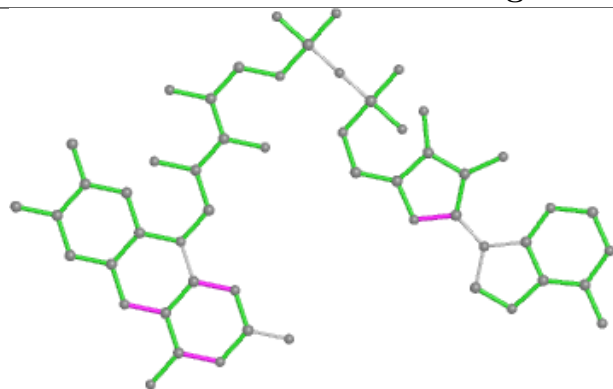


Torsions

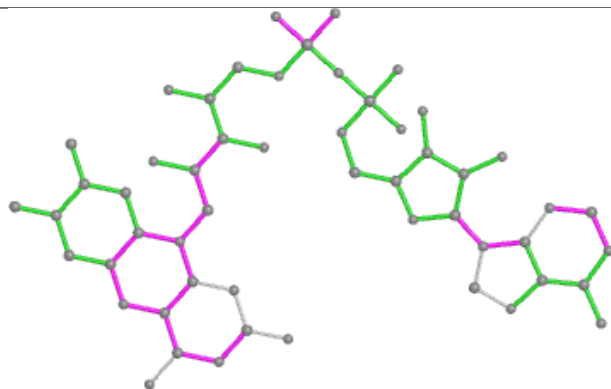


Rings

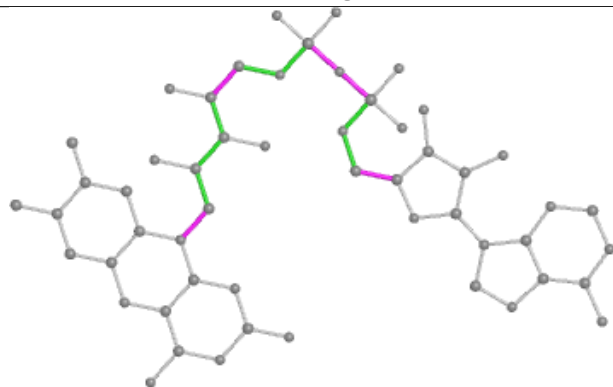
Ligand FAD B 1619



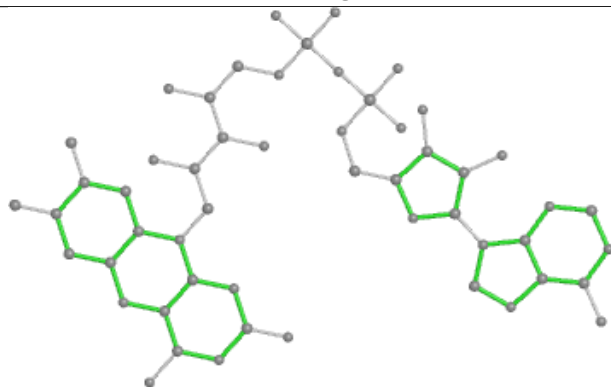
Bond lengths



Bond angles

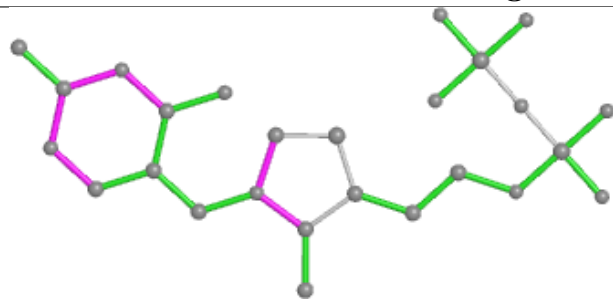


Torsions

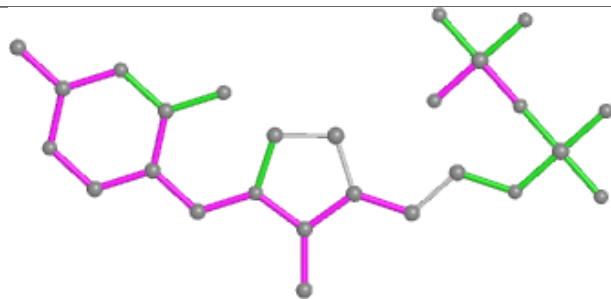


Rings

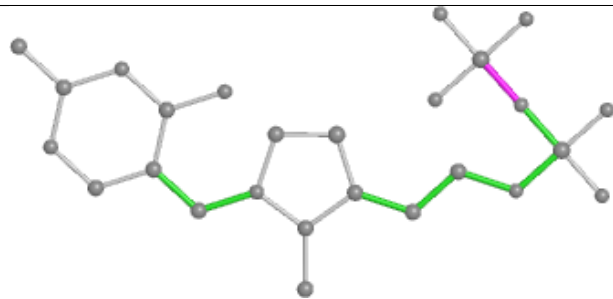
Ligand TPP B 1618



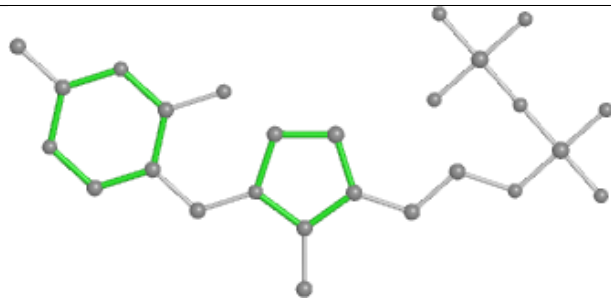
Bond lengths



Bond angles



Torsions



Rings

5.7 Other polymers

There are no such residues in this entry.

5.8 Polymer linkage issues

There are no chain breaks in this entry.

6 Fit of model and data [i](#)

6.1 Protein, DNA and RNA chains [i](#)

In the following table, the column labelled ‘#RSRZ> 2’ contains the number (and percentage) of RSRZ outliers, followed by percent RSRZ outliers for the chain as percentile scores relative to all X-ray entries and entries of similar resolution. The OWAB column contains the minimum, median, 95th percentile and maximum values of the occupancy-weighted average B-factor per residue. The column labelled ‘Q< 0.9’ lists the number of (and percentage) of residues with an average occupancy less than 0.9.

Mol	Chain	Analysed	<RSRZ>	#RSRZ>2	OWAB(Å ²)	Q<0.9
1	A	585/603 (97%)	-0.73	5 (0%) 84 83	9, 14, 25, 44	0
1	B	585/603 (97%)	-0.80	3 (0%) 91 91	9, 13, 24, 47	0
All	All	1170/1206 (97%)	-0.77	8 (0%) 87 87	9, 14, 25, 47	0

All (8) RSRZ outliers are listed below:

Mol	Chain	Res	Type	RSRZ
1	A	592	ASP	4.5
1	B	592	ASP	3.1
1	B	593	ASP	2.9
1	A	593	ASP	2.8
1	B	9	THR	2.8
1	A	561	MET	2.7
1	A	180	GLU	2.3
1	A	560	ALA	2.1

6.2 Non-standard residues in protein, DNA, RNA chains [i](#)

There are no non-standard protein/DNA/RNA residues in this entry.

6.3 Carbohydrates [i](#)

There are no monosaccharides in this entry.

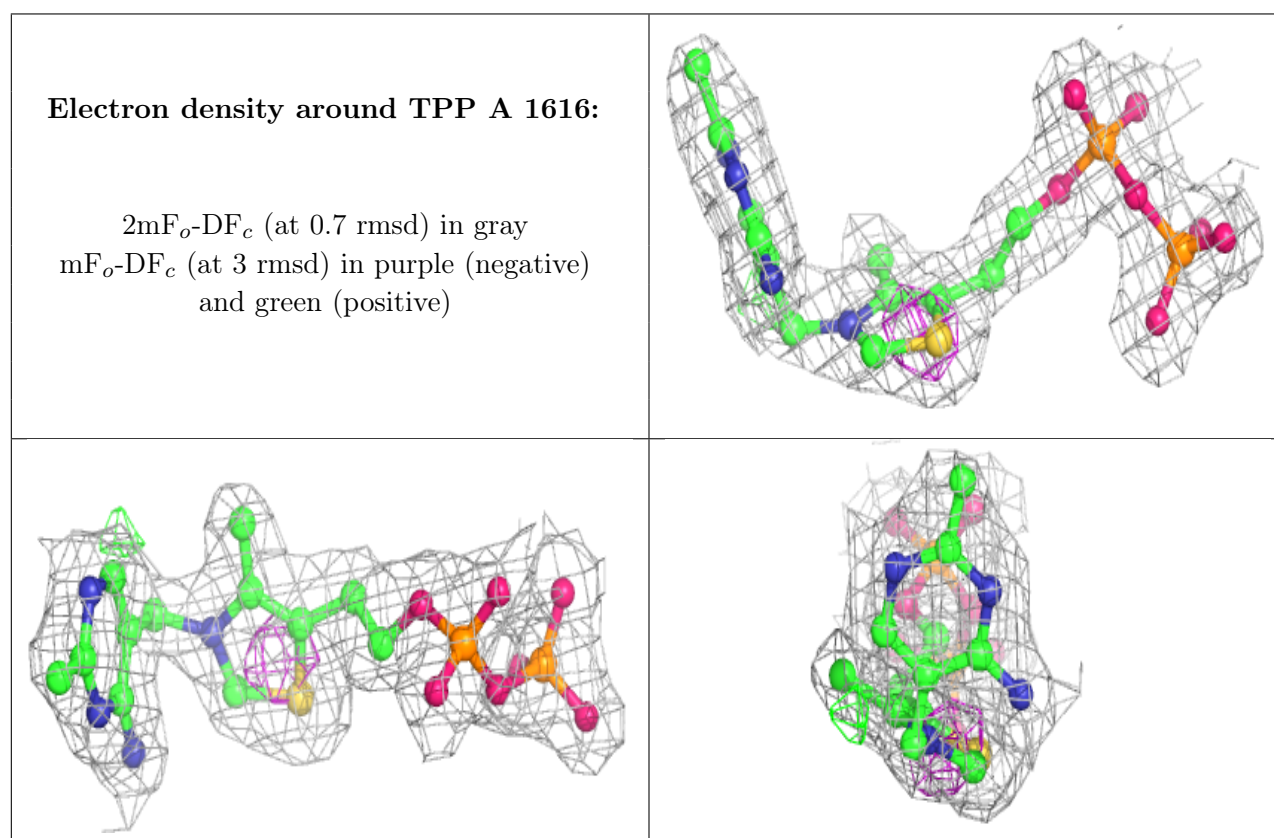
6.4 Ligands [i](#)

In the following table, the Atoms column lists the number of modelled atoms in the group and the number defined in the chemical component dictionary. The B-factors column lists the minimum,

median, 95th percentile and maximum values of B factors of atoms in the group. The column labelled 'Q< 0.9' lists the number of atoms with occupancy less than 0.9.

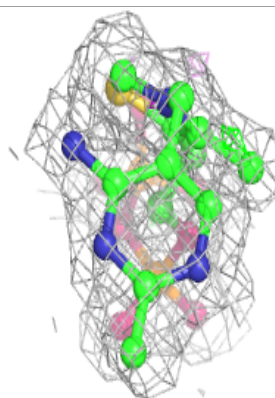
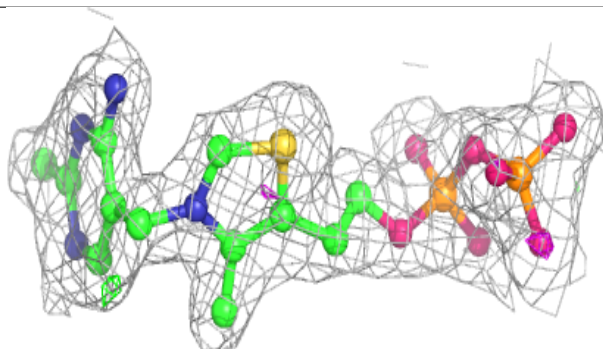
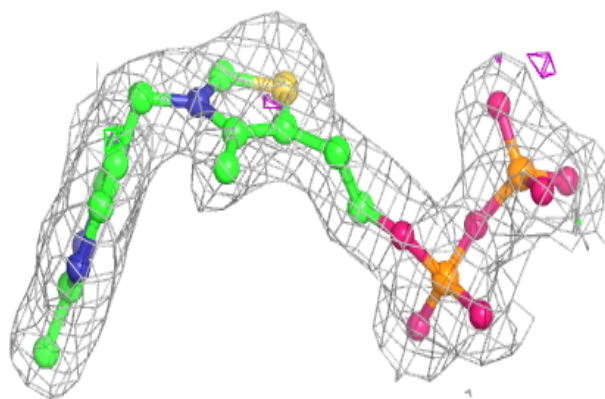
Mol	Type	Chain	Res	Atoms	RSCC	RSR	B-factors(Å ²)	Q<0.9
3	PO4	A	1612	5/5	0.89	0.18	66,67,67,68	0
3	PO4	B	1615	5/5	0.90	0.16	68,68,69,70	0
5	TPP	A	1616	26/26	0.98	0.07	9,13,16,18	0
5	TPP	B	1618	26/26	0.98	0.07	9,13,16,17	0
6	FAD	A	1617	53/53	0.98	0.06	8,11,13,14	0
4	NA	A	1614	1/1	0.99	0.16	11,11,11,11	1
2	MG	B	1613	1/1	0.99	0.06	13,13,13,13	0
6	FAD	B	1619	53/53	0.99	0.06	8,11,12,12	0
2	MG	A	1610	1/1	1.00	0.07	13,13,13,13	0
4	NA	B	1611	1/1	1.00	0.09	6,6,6,6	1

The following is a graphical depiction of the model fit to experimental electron density of all instances of the Ligand of Interest. In addition, ligands with molecular weight > 250 and outliers as shown on the geometry validation Tables will also be included. Each fit is shown from different orientation to approximate a three-dimensional view.

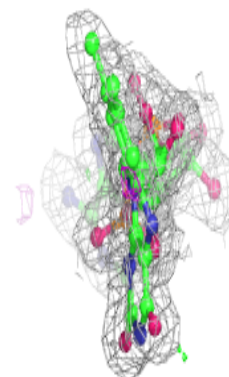
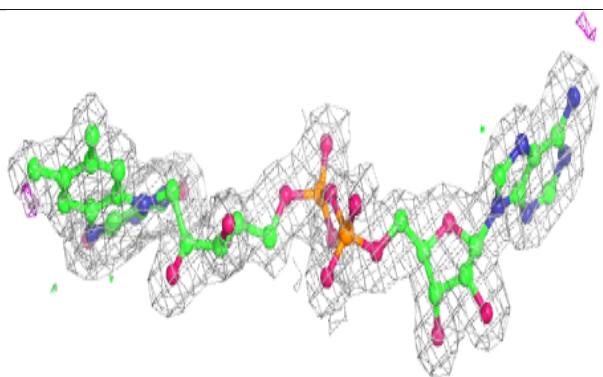
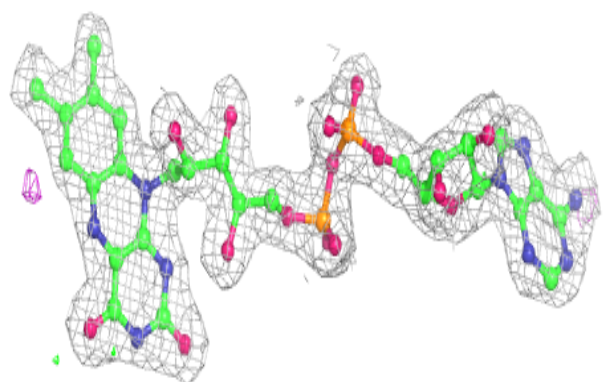


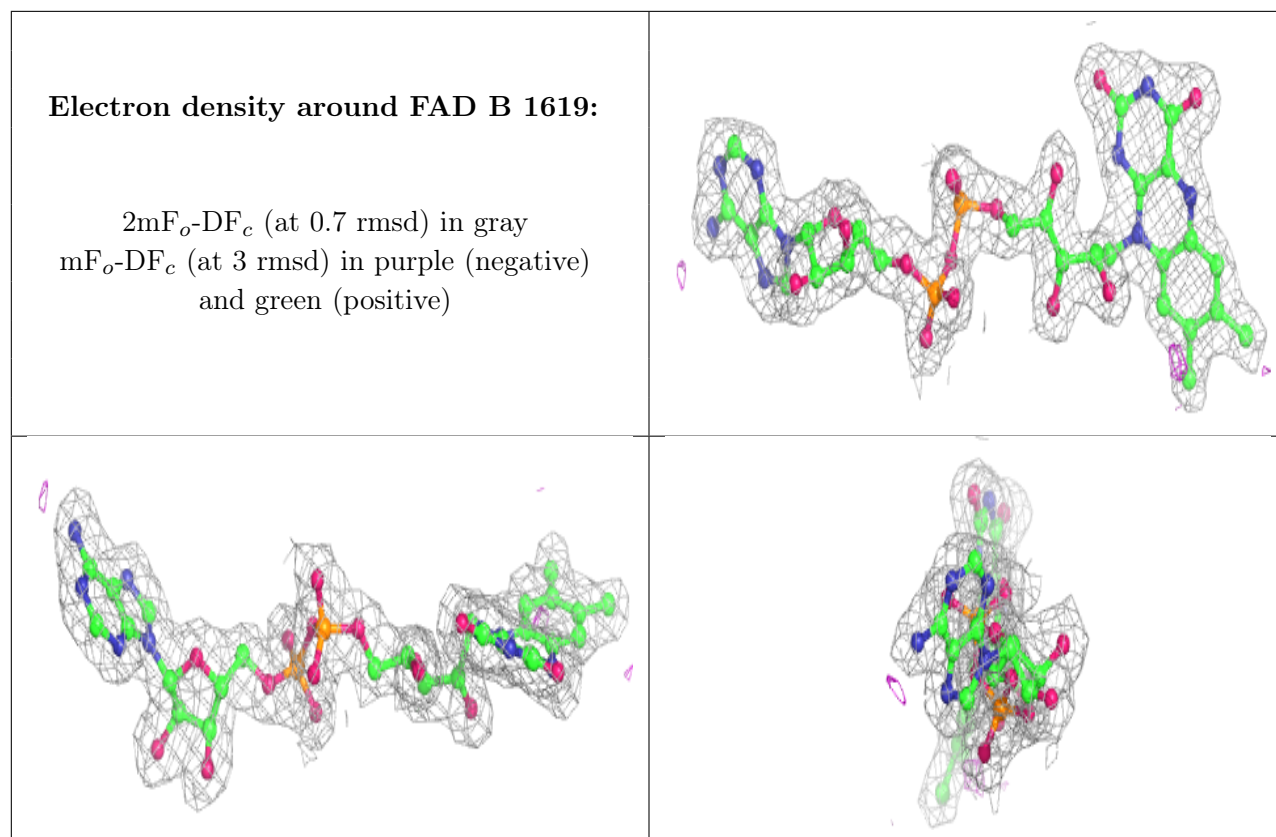
Electron density around TPP B 1618:

$2mF_o-DF_c$ (at 0.7 rmsd) in gray
 mF_o-DF_c (at 3 rmsd) in purple (negative)
and green (positive)

**Electron density around FAD A 1617:**

$2mF_o-DF_c$ (at 0.7 rmsd) in gray
 mF_o-DF_c (at 3 rmsd) in purple (negative)
and green (positive)





6.5 Other polymers [i](#)

There are no such residues in this entry.