



Full wwPDB X-ray Structure Validation Report ⓘ

Oct 12, 2021 – 10:04 AM EDT

PDB ID : 2EZT
Title : Pyruvate oxidase variant F479W in complex with reaction intermediate 2-hydroxyethyl-thiamin diphosphate
Authors : Wille, G.; Meyer, D.; Steinmetz, A.; Hinze, E.; Golbik, R.; Tittmann, K.
Deposited on : 2005-11-10
Resolution : 2.29 Å(reported)

This is a Full wwPDB X-ray Structure Validation Report for a publicly released PDB entry.

We welcome your comments at validation@mail.wwpdb.org

A user guide is available at

<https://www.wwpdb.org/validation/2017/XrayValidationReportHelp>

with specific help available everywhere you see the ⓘ symbol.

The following versions of software and data (see [references ⓘ](#)) were used in the production of this report:

MolProbity : 4.02b-467
Mogul : 1.8.5 (274361), CSD as541be (2020)
Xtriage (Phenix) : 1.13
EDS : 2.23.2
buster-report : 1.1.7 (2018)
Percentile statistics : 20191225.v01 (using entries in the PDB archive December 25th 2019)
Refmac : 5.8.0158
CCP4 : 7.0.044 (Gargrove)
Ideal geometry (proteins) : Engh & Huber (2001)
Ideal geometry (DNA, RNA) : Parkinson et al. (1996)
Validation Pipeline (wwPDB-VP) : 2.23.2

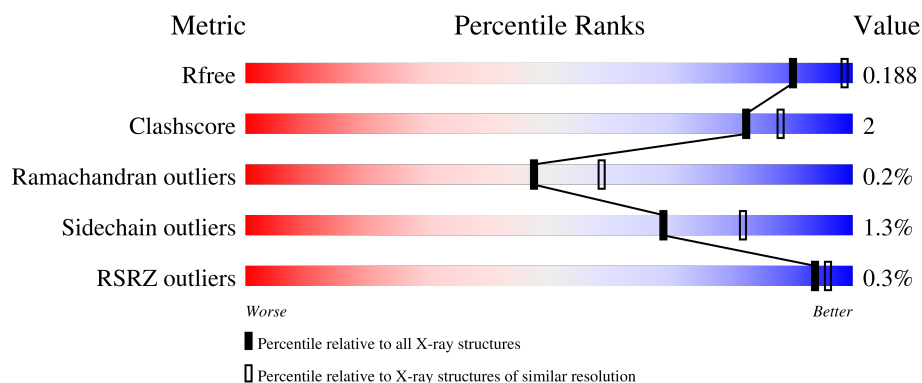
1 Overall quality at a glance

The following experimental techniques were used to determine the structure:

X-RAY DIFFRACTION



The reported resolution of this entry is 2.29 Å.

Percentile scores (ranging between 0-100) for global validation metrics of the entry are shown in the following graphic. The table shows the number of entries on which the scores are based.



Metric	Whole archive (#Entries)	Similar resolution (#Entries, resolution range(Å))
R_{free}	130704	5042 (2.30-2.30)
Clashscore	141614	5643 (2.30-2.30)
Ramachandran outliers	138981	5575 (2.30-2.30)
Sidechain outliers	138945	5575 (2.30-2.30)
RSRZ outliers	127900	4938 (2.30-2.30)

The table below summarises the geometric issues observed across the polymeric chains and their fit to the electron density. The red, orange, yellow and green segments of the lower bar indicate the fraction of residues that contain outliers for ≥ 3 , 2, 1 and 0 types of geometric quality criteria respectively. A grey segment represents the fraction of residues that are not modelled. The numeric value for each fraction is indicated below the corresponding segment, with a dot representing fractions $\leq 5\%$. The upper red bar (where present) indicates the fraction of residues that have poor fit to the electron density. The numeric value is given above the bar.

Mol	Chain	Length	Quality of chain
1	A	603	 92% . . .
1	B	603	 92% 5% .

2 Entry composition

There are 8 unique types of molecules in this entry. The entry contains 10184 atoms, of which 0 are hydrogens and 0 are deuteriums.

In the tables below, the ZeroOcc column contains the number of atoms modelled with zero occupancy, the AltConf column contains the number of residues with at least one atom in alternate conformation and the Trace column contains the number of residues modelled with at most 2 atoms.

- Molecule 1 is a protein called Pyruvate oxidase.

Mol	Chain	Residues	Atoms					ZeroOcc	AltConf	Trace
1	A	585	Total	C	N	O	S	0	0	0
			4523	2868	780	861	14			
1	B	585	Total	C	N	O	S	0	0	0
			4523	2868	780	861	14			

There are 4 discrepancies between the modelled and reference sequences:

Chain	Residue	Modelled	Actual	Comment	Reference
A	479	TRP	PHE	engineered mutation	UNP P37063
A	561	MET	THR	see remark 999	UNP P37063
B	479	TRP	PHE	engineered mutation	UNP P37063
B	561	MET	THR	see remark 999	UNP P37063

- Molecule 2 is MAGNESIUM ION (three-letter code: MG) (formula: Mg).

Mol	Chain	Residues	Atoms		ZeroOcc	AltConf
2	A	1	Total	Mg	0	0
			1	1		
2	B	1	Total	Mg	0	0
			1	1		

- Molecule 3 is PHOSPHATE ION (three-letter code: PO4) (formula: O₄P).

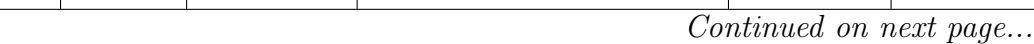


Mol	Chain	Residues	Atoms			ZeroOcc	AltConf
3	A	1	Total	O	P	0	0
			5	4	1		
3	B	1	Total	O	P	0	0
			5	4	1		

- Molecule 4 is SODIUM ION (three-letter code: NA) (formula: Na).

Mol	Chain	Residues	Atoms		ZeroOcc	AltConf
4	A	1	Total	Na	0	0
			1	1		
4	B	1	Total	Na	0	0
			1	1		

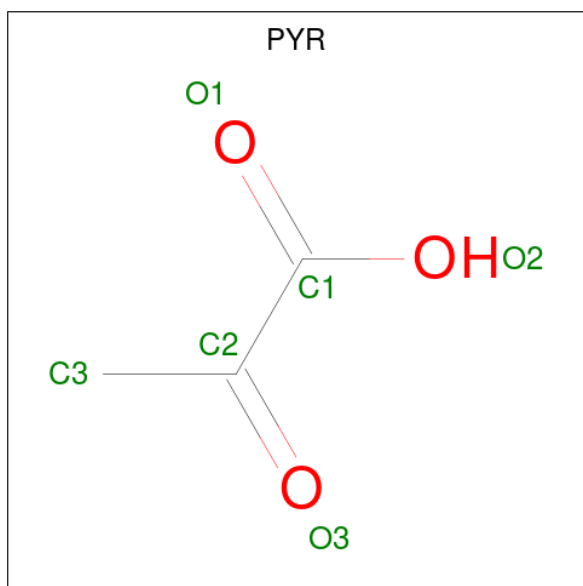
- Molecule 5 is 2-[(2E)-3-[(4-AMINO-2-METHYLPYRIMIDIN-5-YL)METHYL]-2-(1-H YDROXYETHYLIDENE)-4-METHYL-2,3-DIHYDRO-1,3-THIAZOL-5-YL]ETHYL TRIHYDROGEN DIPHOSPHATE (three-letter code: TDM) (formula: C₁₄H₂₂N₄O₈P₂S).



Continued from previous page...

Mol	Chain	Residues	Atoms					ZeroOcc	AltConf
6	B	1	Total	C	N	O	P	0	0
			53	27	9	15	2		

- Molecule 7 is PYRUVIC ACID (three-letter code: PYR) (formula: $C_3H_4O_3$).



Mol	Chain	Residues	Atoms			ZeroOcc	AltConf
7	A	1	Total	C	O	0	0
			6	3	3		
7	B	1	Total	C	O	0	0
			6	3	3		

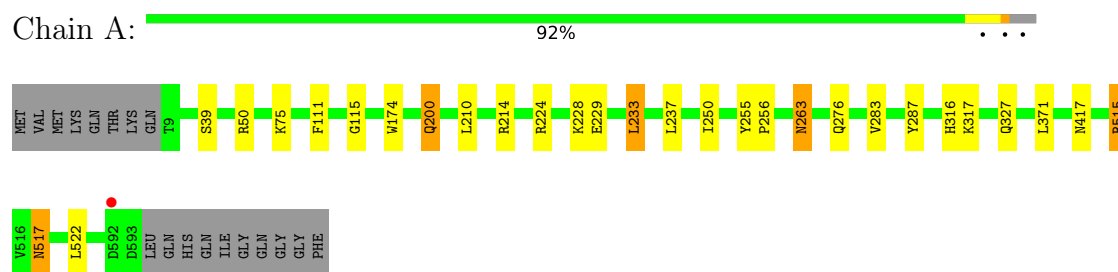
- Molecule 8 is water.

Mol	Chain	Residues	Atoms		ZeroOcc	AltConf
8	A	474	Total	O	0	0
			474	474		
8	B	474	Total	O	0	0
			474	474		

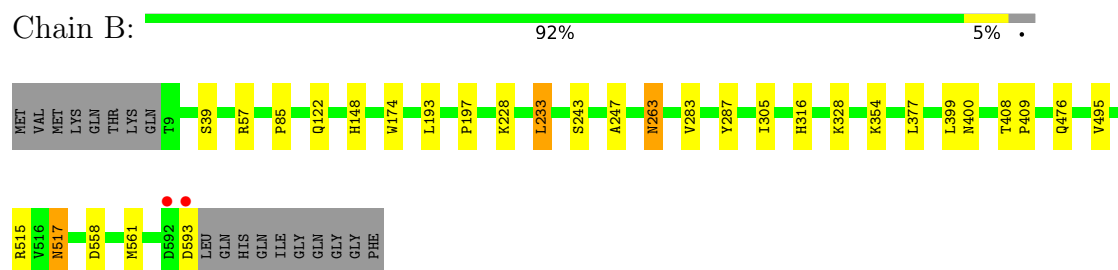
3 Residue-property plots [i](#)

These plots are drawn for all protein, RNA, DNA and oligosaccharide chains in the entry. The first graphic for a chain summarises the proportions of the various outlier classes displayed in the second graphic. The second graphic shows the sequence view annotated by issues in geometry and electron density. Residues are color-coded according to the number of geometric quality criteria for which they contain at least one outlier: green = 0, yellow = 1, orange = 2 and red = 3 or more. A red dot above a residue indicates a poor fit to the electron density ($RSRZ > 2$). Stretches of 2 or more consecutive residues without any outlier are shown as a green connector. Residues present in the sample, but not in the model, are shown in grey.

• Molecule 1: Pyruvate oxidase



• Molecule 1: Pyruvate oxidase



4 Data and refinement statistics

Property	Value	Source
Space group	C 2 2 21	Depositor
Cell constants a, b, c, α , β , γ	118.79Å 154.02Å 165.32Å 90.00° 90.00° 90.00°	Depositor
Resolution (Å)	94.07 – 2.29 94.06 – 2.29	Depositor EDS
% Data completeness (in resolution range)	99.1 (94.07-2.29) 99.1 (94.06-2.29)	Depositor EDS
R_{merge}	0.18	Depositor
R_{sym}	(Not available)	Depositor
$\langle I/\sigma(I) \rangle$ ¹	3.70 (at 2.29Å)	Xtriage
Refinement program	REFMAC refmac_5.2.0005	Depositor
R, R_{free}	0.150 , 0.187 0.150 , 0.188	Depositor DCC
R_{free} test set	1379 reflections (2.03%)	wwPDB-VP
Wilson B-factor (Å ²)	11.9	Xtriage
Anisotropy	0.012	Xtriage
Bulk solvent k_{sol} (e/Å ³), B_{sol} (Å ²)	0.37 , 38.0	EDS
L-test for twinning ²	$\langle L \rangle = 0.49$, $\langle L^2 \rangle = 0.32$	Xtriage
Estimated twinning fraction	No twinning to report.	Xtriage
F_o, F_c correlation	0.95	EDS
Total number of atoms	10184	wwPDB-VP
Average B, all atoms (Å ²)	11.0	wwPDB-VP

Xtriage's analysis on translational NCS is as follows: *The largest off-origin peak in the Patterson function is 4.47% of the height of the origin peak. No significant pseudotranslation is detected.*

¹Intensities estimated from amplitudes.

²Theoretical values of $\langle |L| \rangle$, $\langle L^2 \rangle$ for acentric reflections are 0.5, 0.333 respectively for untwinned datasets, and 0.375, 0.2 for perfectly twinned datasets.

5 Model quality [i](#)

5.1 Standard geometry [i](#)

Bond lengths and bond angles in the following residue types are not validated in this section: MG, PO4, PYR, NA, TDM, FAD

The Z score for a bond length (or angle) is the number of standard deviations the observed value is removed from the expected value. A bond length (or angle) with $|Z| > 5$ is considered an outlier worth inspection. RMSZ is the root-mean-square of all Z scores of the bond lengths (or angles).

Mol	Chain	Bond lengths		Bond angles	
		RMSZ	$\# Z > 5$	RMSZ	$\# Z > 5$
1	A	0.68	0/4619	0.70	3/6291 (0.0%)
1	B	0.67	0/4619	0.67	1/6291 (0.0%)
All	All	0.68	0/9238	0.69	4/12582 (0.0%)

There are no bond length outliers.

All (4) bond angle outliers are listed below:

Mol	Chain	Res	Type	Atoms	Z	Observed(°)	Ideal(°)
1	A	515	ARG	NE-CZ-NH2	-7.11	116.75	120.30
1	A	515	ARG	NE-CZ-NH1	5.62	123.11	120.30
1	A	283	VAL	CB-CA-C	-5.55	100.85	111.40
1	B	233	LEU	CA-CB-CG	5.04	126.90	115.30

There are no chirality outliers.

There are no planarity outliers.

5.2 Too-close contacts [i](#)

In the following table, the Non-H and H(model) columns list the number of non-hydrogen atoms and hydrogen atoms in the chain respectively. The H(added) column lists the number of hydrogen atoms added and optimized by MolProbity. The Clashes column lists the number of clashes within the asymmetric unit, whereas Symm-Clashes lists symmetry-related clashes.

Mol	Chain	Non-H	H(model)	H(added)	Clashes	Symm-Clashes
1	A	4523	0	4468	23	0
1	B	4523	0	4468	19	0
2	A	1	0	0	0	0
2	B	1	0	0	0	0
3	A	5	0	0	0	0

Continued on next page...

Continued from previous page...

Mol	Chain	Non-H	H(model)	H(added)	Clashes	Symm-Clashes
3	B	5	0	0	0	0
4	A	1	0	0	0	0
4	B	1	0	0	0	0
5	A	29	0	18	1	0
5	B	29	0	18	1	0
6	A	53	0	31	2	0
6	B	53	0	31	0	0
7	A	6	0	3	0	0
7	B	6	0	3	0	0
8	A	474	0	0	4	0
8	B	474	0	0	5	0
All	All	10184	0	9040	45	0

The all-atom clashscore is defined as the number of clashes found per 1000 atoms (including hydrogen atoms). The all-atom clashscore for this structure is 2.

All (45) close contacts within the same asymmetric unit are listed below, sorted by their clash magnitude.

Atom-1	Atom-2	Interatomic distance (Å)	Clash overlap (Å)
1:A:317:LYS:HD2	8:B:2084:HOH:O	1.73	0.88
1:A:224:ARG:HG2	1:A:250:ILE:HD11	1.59	0.84
1:A:224:ARG:HB2	8:A:1915:HOH:O	1.87	0.74
1:A:111:PHE:CE1	1:A:115:GLY:HA3	2.28	0.68
1:A:317:LYS:CD	8:B:2084:HOH:O	2.35	0.66
1:A:224:ARG:HG2	1:A:250:ILE:CD1	2.27	0.64
1:B:316:HIS:HD2	8:B:1720:HOH:O	1.82	0.62
1:A:224:ARG:CB	8:A:1915:HOH:O	2.48	0.59
1:A:50:ARG:HG2	1:A:50:ARG:HH11	1.67	0.58
1:A:214:ARG:NH1	1:A:276:GLN:HE21	2.00	0.57
5:B:1614:TDM:H4'1	5:B:1614:TDM:C27	2.18	0.56
5:A:1611:TDM:H4'1	5:A:1611:TDM:C27	2.17	0.55
1:A:316:HIS:HE1	8:A:2040:HOH:O	1.89	0.54
1:B:57:ARG:HD2	8:B:1855:HOH:O	2.08	0.53
1:B:148:HIS:HE1	8:B:1788:HOH:O	1.91	0.53
1:A:39:SER:HB3	1:A:174:TRP:CD2	2.45	0.52
1:B:197:PRO:HD3	1:B:328:LYS:HD2	1.92	0.52
1:A:111:PHE:CD1	1:A:115:GLY:HA3	2.45	0.51
1:B:517:ASN:H	1:B:517:ASN:HD22	1.58	0.51
1:A:316:HIS:HD2	8:A:1676:HOH:O	1.95	0.50
1:A:517:ASN:H	1:A:517:ASN:HD22	1.58	0.50
1:B:476:GLN:HA	1:B:495:VAL:O	2.12	0.50

Continued on next page...

Continued from previous page...

Atom-1	Atom-2	Interatomic distance (Å)	Clash overlap (Å)
1:A:263:ASN:HB2	1:A:287:TYR:OH	2.13	0.48
1:B:399:LEU:C	1:B:399:LEU:HD23	2.35	0.47
1:B:228:LYS:HE3	1:B:228:LYS:HB2	1.65	0.47
1:B:354:LYS:HE2	1:B:354:LYS:HB3	1.77	0.47
1:B:517:ASN:HD22	1:B:517:ASN:N	2.11	0.47
1:B:283:VAL:HG13	1:B:305:ILE:HB	1.97	0.47
1:B:243:SER:HB2	1:B:247:ALA:HB3	1.97	0.46
1:B:408:THR:HB	1:B:409:PRO:HD2	1.97	0.46
1:B:39:SER:HB3	1:B:174:TRP:CD2	2.50	0.46
1:A:200:GLN:HE21	1:A:200:GLN:H	1.62	0.46
1:B:558:ASP:OD2	1:B:561:MET:HE2	2.16	0.46
1:A:229:GLU:O	1:A:233:LEU:HB2	2.16	0.46
1:B:263:ASN:HB2	1:B:287:TYR:OH	2.16	0.46
1:B:377:LEU:CD1	1:B:400:ASN:HB3	2.46	0.45
1:A:210:LEU:HD21	1:A:237:LEU:HD22	2.01	0.43
1:A:255:TYR:HA	1:A:256:PRO:HD3	1.95	0.42
1:A:214:ARG:HH11	1:A:276:GLN:HE21	1.66	0.41
1:A:371:LEU:HD11	1:A:522:LEU:HD11	2.01	0.41
1:A:371:LEU:CD1	1:A:522:LEU:HD11	2.50	0.41
1:B:85:PRO:CD	1:B:122:GLN:HE21	2.33	0.41
1:B:558:ASP:HB3	1:B:561:MET:HE3	2.03	0.41
6:A:1612:FAD:H9	6:A:1612:FAD:H1'1	1.83	0.41
1:A:417:ASN:HB3	6:A:1612:FAD:O3'	2.21	0.41

There are no symmetry-related clashes.

5.3 Torsion angles [i](#)

5.3.1 Protein backbone [i](#)

In the following table, the Percentiles column shows the percent Ramachandran outliers of the chain as a percentile score with respect to all X-ray entries followed by that with respect to entries of similar resolution.

The Analysed column shows the number of residues for which the backbone conformation was analysed, and the total number of residues.

Mol	Chain	Analysed	Favoured	Allowed	Outliers	Percentiles
1	A	583/603 (97%)	567 (97%)	15 (3%)	1 (0%)	47 58
1	B	583/603 (97%)	569 (98%)	13 (2%)	1 (0%)	47 58

Continued on next page...

Continued from previous page...

Mol	Chain	Analysed	Favoured	Allowed	Outliers	Percentiles
All	All	1166/1206 (97%)	1136 (97%)	28 (2%)	2 (0%)	47 58

All (2) Ramachandran outliers are listed below:

Mol	Chain	Res	Type
1	A	263	ASN
1	B	263	ASN

5.3.2 Protein sidechains ⓘ

In the following table, the Percentiles column shows the percent sidechain outliers of the chain as a percentile score with respect to all X-ray entries followed by that with respect to entries of similar resolution.

The Analysed column shows the number of residues for which the sidechain conformation was analysed, and the total number of residues.

Mol	Chain	Analysed	Rotameric	Outliers	Percentiles
1	A	470/485 (97%)	463 (98%)	7 (2%)	65 79
1	B	470/485 (97%)	465 (99%)	5 (1%)	73 86
All	All	940/970 (97%)	928 (99%)	12 (1%)	69 82

All (12) residues with a non-rotameric sidechain are listed below:

Mol	Chain	Res	Type
1	A	75	LYS
1	A	200	GLN
1	A	228	LYS
1	A	233	LEU
1	A	327	GLN
1	A	515	ARG
1	A	517	ASN
1	B	193	LEU
1	B	233	LEU
1	B	515	ARG
1	B	517	ASN
1	B	593	ASP

Sometimes sidechains can be flipped to improve hydrogen bonding and reduce clashes. All (17) such sidechains are listed below:

Mol	Chain	Res	Type
1	A	10	ASN
1	A	148	HIS
1	A	176	GLN
1	A	200	GLN
1	A	276	GLN
1	A	316	HIS
1	A	476	GLN
1	A	517	ASN
1	B	10	ASN
1	B	52	HIS
1	B	122	GLN
1	B	148	HIS
1	B	176	GLN
1	B	316	HIS
1	B	476	GLN
1	B	489	GLN
1	B	517	ASN

5.3.3 RNA [i](#)

There are no RNA molecules in this entry.

5.4 Non-standard residues in protein, DNA, RNA chains [i](#)

There are no non-standard protein/DNA/RNA residues in this entry.

5.5 Carbohydrates [i](#)

There are no monosaccharides in this entry.

5.6 Ligand geometry [i](#)

Of 12 ligands modelled in this entry, 4 are monoatomic - leaving 8 for Mogul analysis.

In the following table, the Counts columns list the number of bonds (or angles) for which Mogul statistics could be retrieved, the number of bonds (or angles) that are observed in the model and the number of bonds (or angles) that are defined in the Chemical Component Dictionary. The Link column lists molecule types, if any, to which the group is linked. The Z score for a bond length (or angle) is the number of standard deviations the observed value is removed from the expected value. A bond length (or angle) with $|Z| > 2$ is considered an outlier worth inspection. RMSZ is the root-mean-square of all Z scores of the bond lengths (or angles).

Mol	Type	Chain	Res	Link	Bond lengths			Bond angles		
					Counts	RMSZ	# Z > 2	Counts	RMSZ	# Z > 2
5	TDM	B	1614	2	25,30,30	0.71	0	32,45,45	2.53	11 (34%)
3	PO4	A	1512	-	4,4,4	1.02	0	6,6,6	0.63	0
7	PYR	A	1613	-	2,5,5	2.42	1 (50%)	2,6,6	0.29	0
6	FAD	A	1612	-	51,58,58	1.03	6 (11%)	60,89,89	1.89	13 (21%)
7	PYR	B	1616	-	2,5,5	1.87	1 (50%)	2,6,6	0.38	0
5	TDM	A	1611	2	25,30,30	0.95	1 (4%)	32,45,45	2.44	10 (31%)
6	FAD	B	1615	-	51,58,58	1.14	5 (9%)	60,89,89	1.73	13 (21%)
3	PO4	B	1515	-	4,4,4	1.28	0	6,6,6	0.61	0

In the following table, the Chirals column lists the number of chiral outliers, the number of chiral centers analysed, the number of these observed in the model and the number defined in the Chemical Component Dictionary. Similar counts are reported in the Torsion and Rings columns. '-' means no outliers of that kind were identified.

Mol	Type	Chain	Res	Link	Chirals	Torsions	Rings
5	TDM	B	1614	2	-	4/16/21/21	0/2/2/2
7	PYR	A	1613	-	-	0/0/4/4	-
6	FAD	A	1612	-	-	7/30/50/50	0/6/6/6
7	PYR	B	1616	-	-	0/0/4/4	-
5	TDM	A	1611	2	-	4/16/21/21	0/2/2/2
6	FAD	B	1615	-	-	5/30/50/50	0/6/6/6

All (14) bond length outliers are listed below:

Mol	Chain	Res	Type	Atoms	Z	Observed(Å)	Ideal(Å)
7	A	1613	PYR	O3-C2	3.40	1.33	1.22
6	A	1612	FAD	C4X-N5	2.99	1.37	1.33
6	B	1615	FAD	C1'-N10	-2.92	1.45	1.48
6	B	1615	FAD	C4X-N5	2.89	1.37	1.33
6	B	1615	FAD	C10-N1	2.79	1.36	1.33
7	B	1616	PYR	O3-C2	2.61	1.30	1.22
5	A	1611	TDM	C6-C5	2.60	1.52	1.50
6	B	1615	FAD	C4X-C10	2.55	1.41	1.38
6	B	1615	FAD	C4-N3	2.43	1.37	1.33
6	A	1612	FAD	C10-N1	2.31	1.36	1.33
6	A	1612	FAD	C2A-N3A	2.19	1.35	1.32
6	A	1612	FAD	C5X-N5	2.19	1.39	1.35
6	A	1612	FAD	O4B-C1B	2.08	1.44	1.41
6	A	1612	FAD	C4-N3	2.00	1.36	1.33

All (47) bond angle outliers are listed below:

Mol	Chain	Res	Type	Atoms	Z	Observed(°)	Ideal(°)
5	A	1611	TDM	C2-N3-C4	8.11	113.15	108.64
5	B	1614	TDM	C2-N3-C4	7.83	112.99	108.64
6	A	1612	FAD	C4-N3-C2	7.38	121.37	115.14
5	B	1614	TDM	C6-C5-C4	6.46	132.62	127.43
5	A	1611	TDM	C6-C5-C4	6.04	132.28	127.43
6	B	1615	FAD	C4-N3-C2	5.54	119.82	115.14
6	B	1615	FAD	N3A-C2A-N1A	-4.91	121.00	128.68
6	A	1612	FAD	N3A-C2A-N1A	-4.45	121.72	128.68
6	A	1612	FAD	C4-C4X-N5	4.30	123.51	118.60
5	B	1614	TDM	C5'-C7'-N3	-3.92	106.78	113.26
6	A	1612	FAD	C10-C4X-N5	-3.85	118.60	121.26
5	B	1614	TDM	C29-C27-C2	-3.74	119.30	124.92
5	A	1611	TDM	C5'-C7'-N3	-3.45	107.56	113.26
6	B	1615	FAD	C10-C4X-N5	-3.38	118.92	121.26
5	B	1614	TDM	C6'-N1'-C2'	3.33	121.64	115.96
6	A	1612	FAD	C9A-N10-C10	-3.32	117.56	121.91
6	B	1615	FAD	C9A-N10-C10	-3.31	117.57	121.91
6	B	1615	FAD	C1'-N10-C9A	3.22	120.83	118.29
6	B	1615	FAD	C1'-C2'-C3'	3.20	118.73	109.79
5	A	1611	TDM	CM2-C2'-N1'	3.18	120.64	117.14
5	B	1614	TDM	CM2-C2'-N1'	3.16	120.62	117.14
6	A	1612	FAD	C1'-C2'-C3'	3.14	118.55	109.79
6	A	1612	FAD	C4-C4X-C10	-3.12	117.88	119.95
6	B	1615	FAD	C4-C4X-N5	2.94	121.96	118.60
5	B	1614	TDM	N1'-C2'-N3'	-2.94	120.48	125.54
6	A	1612	FAD	C6-C5X-N5	2.84	122.18	119.05
5	A	1611	TDM	C29-C27-C2	-2.82	120.69	124.92
5	A	1611	TDM	C5-C4-N3	2.81	113.53	107.66
5	B	1614	TDM	C5-C4-N3	2.76	113.43	107.66
5	A	1611	TDM	N1'-C2'-N3'	-2.74	120.83	125.54
6	A	1612	FAD	C4X-C4-N3	-2.73	119.69	123.43
6	B	1615	FAD	C4X-C4-N3	-2.66	119.80	123.43
5	A	1611	TDM	O28-C27-C2	2.64	122.65	120.05
6	A	1612	FAD	C4A-C5A-N7A	-2.59	106.70	109.40
5	A	1611	TDM	CM4-C4-C5	-2.58	121.96	127.60
6	A	1612	FAD	C1'-N10-C9A	2.47	120.24	118.29
6	A	1612	FAD	C9A-C5X-N5	-2.44	118.54	122.36
6	B	1615	FAD	O2'-C2'-C1'	2.36	115.28	109.59
5	B	1614	TDM	C5'-C6'-N1'	-2.35	119.90	123.82
6	B	1615	FAD	C1B-N9A-C4A	-2.35	122.51	126.64
5	A	1611	TDM	C6'-N1'-C2'	2.32	119.91	115.96
6	B	1615	FAD	C9A-C5X-N5	-2.21	118.91	122.36

Continued on next page...

Continued from previous page...

Mol	Chain	Res	Type	Atoms	Z	Observed(°)	Ideal(°)
6	B	1615	FAD	O5B-C5B-C4B	-2.13	101.67	108.99
6	A	1612	FAD	O2'-C2'-C1'	2.11	114.67	109.59
5	B	1614	TDM	CM4-C4-C5	-2.10	123.02	127.60
6	B	1615	FAD	C4X-C10-N10	-2.08	118.16	120.30
5	B	1614	TDM	O28-C27-C2	2.07	122.08	120.05

There are no chirality outliers.

All (20) torsion outliers are listed below:

Mol	Chain	Res	Type	Atoms
5	A	1611	TDM	PA-O3A-PB-O3B
5	A	1611	TDM	C5-C6-C7-O7
5	B	1614	TDM	PA-O3A-PB-O3B
6	A	1612	FAD	C2'-C1'-N10-C9A
6	A	1612	FAD	C3'-C4'-C5'-O5'
6	A	1612	FAD	O4'-C4'-C5'-O5'
6	B	1615	FAD	P-O3P-PA-O5B
6	B	1615	FAD	C2'-C1'-N10-C9A
6	B	1615	FAD	C3'-C4'-C5'-O5'
6	B	1615	FAD	O4'-C4'-C5'-O5'
6	A	1612	FAD	P-O3P-PA-O5B
5	B	1614	TDM	C5-C6-C7-O7
5	A	1611	TDM	PA-O3A-PB-O2B
6	A	1612	FAD	PA-O3P-P-O1P
6	B	1615	FAD	O4B-C4B-C5B-O5B
5	A	1611	TDM	PA-O3A-PB-O1B
5	B	1614	TDM	PA-O3A-PB-O2B
6	A	1612	FAD	PA-O3P-P-O2P
6	A	1612	FAD	O4B-C4B-C5B-O5B
5	B	1614	TDM	PA-O3A-PB-O1B

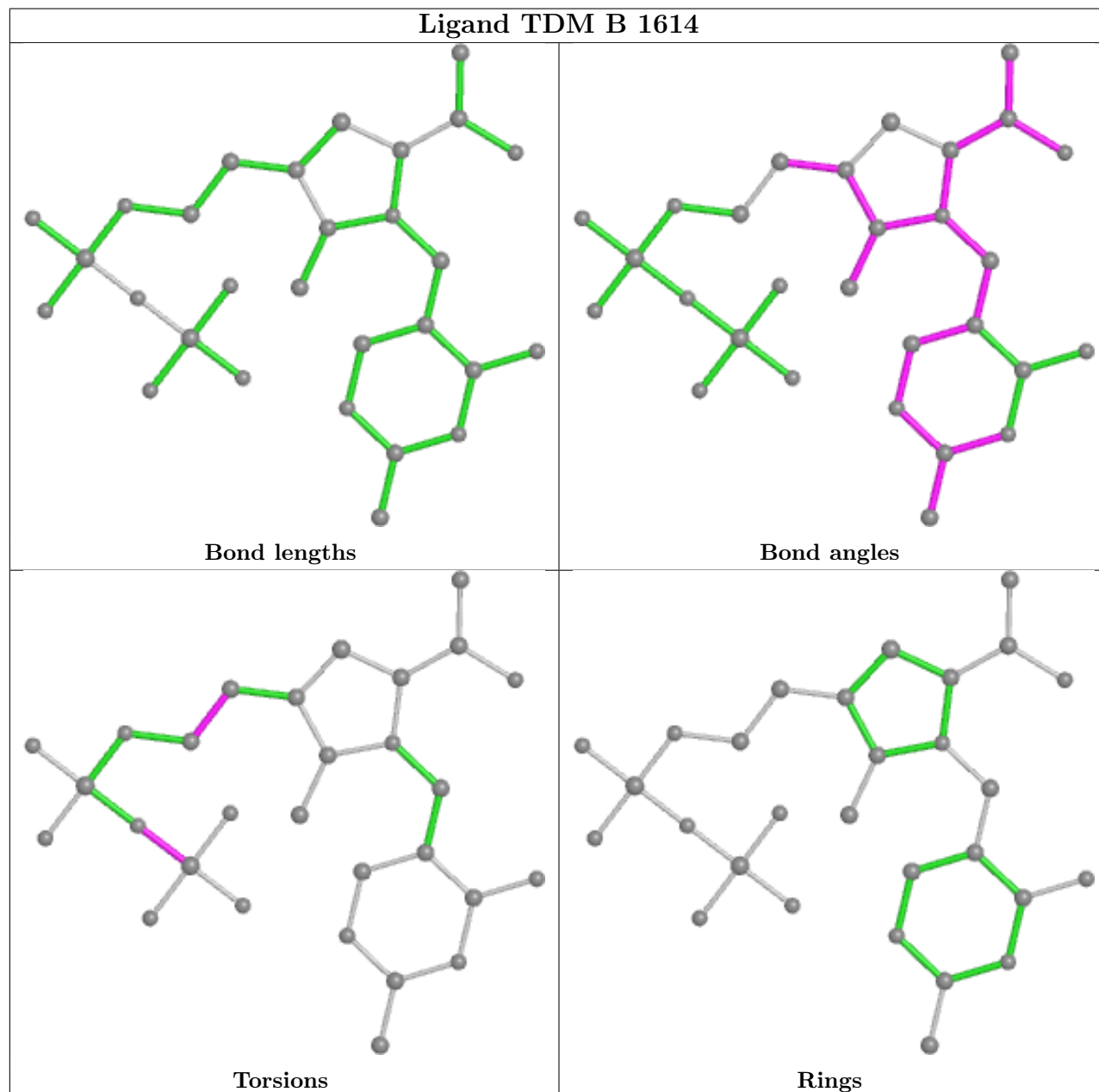
There are no ring outliers.

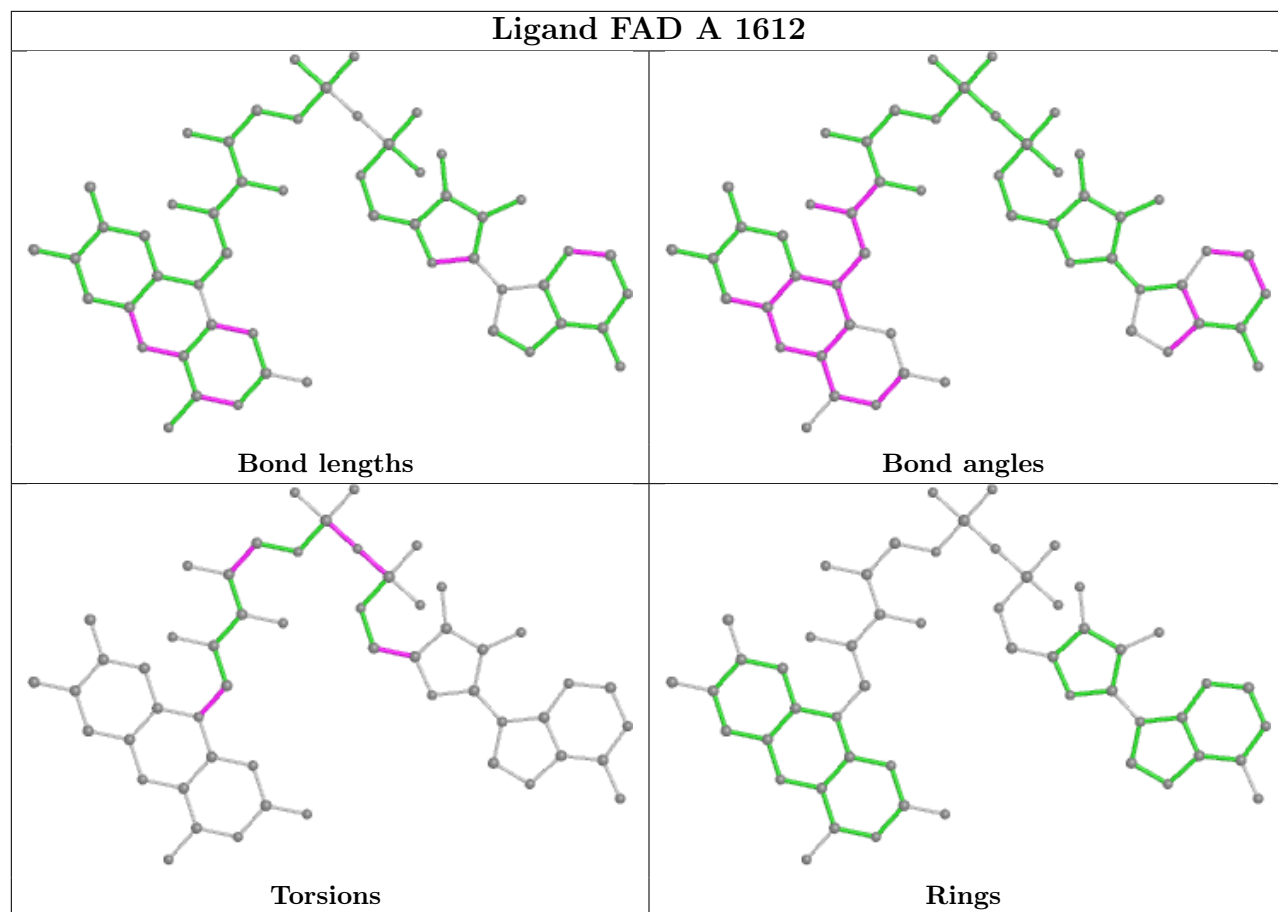
3 monomers are involved in 4 short contacts:

Mol	Chain	Res	Type	Clashes	Symm-Clashes
5	B	1614	TDM	1	0
6	A	1612	FAD	2	0
5	A	1611	TDM	1	0

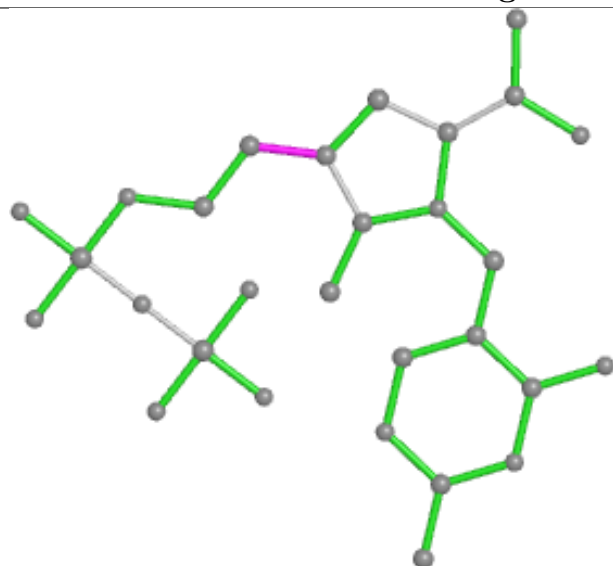
The following is a two-dimensional graphical depiction of Mogul quality analysis of bond lengths, bond angles, torsion angles, and ring geometry for all instances of the Ligand of Interest. In

addition, ligands with molecular weight > 250 and outliers as shown on the validation Tables will also be included. For torsion angles, if less than 5% of the Mogul distribution of torsion angles is within 10 degrees of the torsion angle in question, then that torsion angle is considered an outlier. Any bond that is central to one or more torsion angles identified as an outlier by Mogul will be highlighted in the graph. For rings, the root-mean-square deviation (RMSD) between the ring in question and similar rings identified by Mogul is calculated over all ring torsion angles. If the average RMSD is greater than 60 degrees and the minimal RMSD between the ring in question and any Mogul-identified rings is also greater than 60 degrees, then that ring is considered an outlier. The outliers are highlighted in purple. The color gray indicates Mogul did not find sufficient equivalents in the CSD to analyse the geometry.

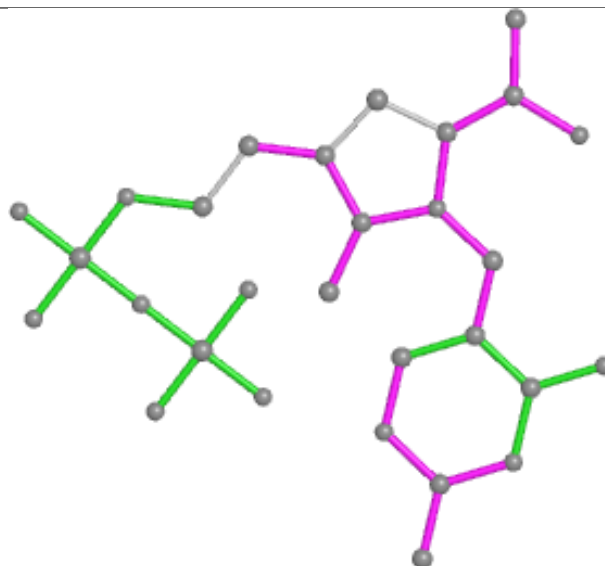




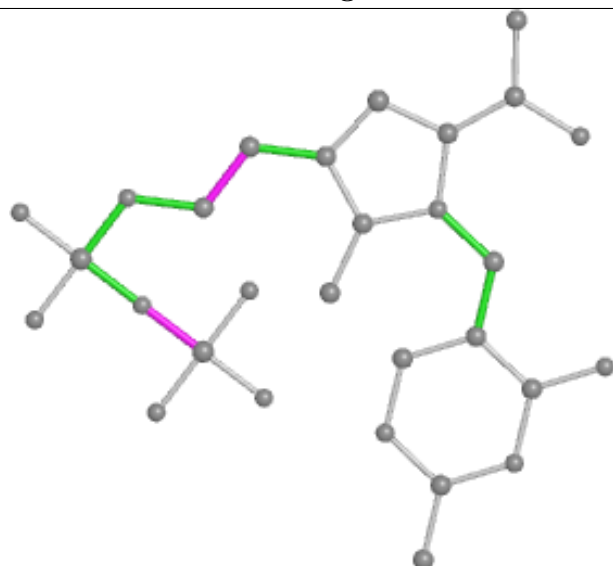
Ligand TDM A 1611



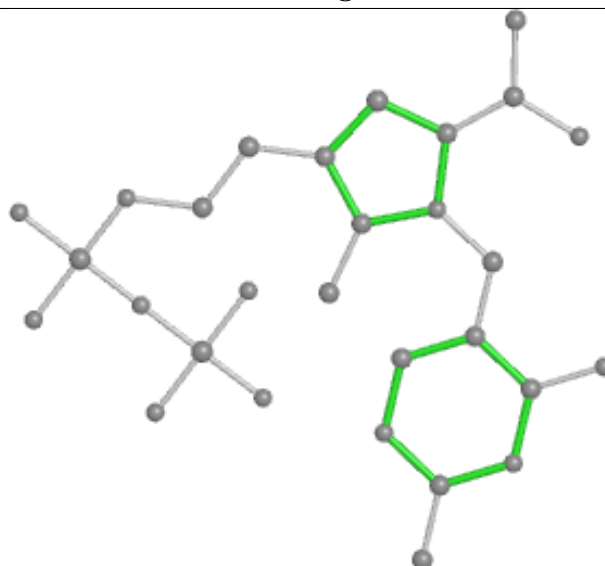
Bond lengths



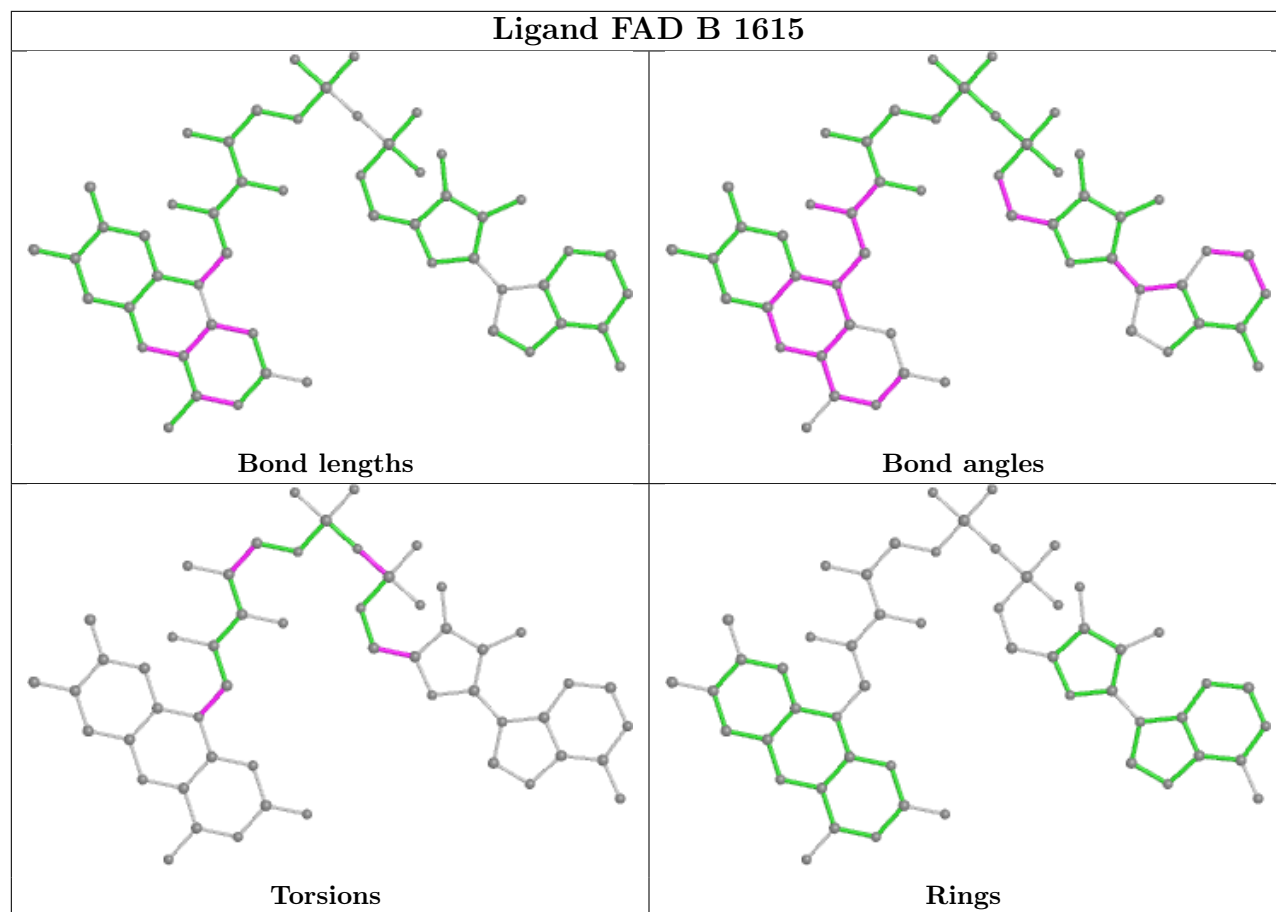
Bond angles



Torsions



Rings



5.7 Other polymers [i](#)

There are no such residues in this entry.

5.8 Polymer linkage issues [i](#)

There are no chain breaks in this entry.

6 Fit of model and data [i](#)

6.1 Protein, DNA and RNA chains [i](#)

In the following table, the column labelled ‘#RSRZ> 2’ contains the number (and percentage) of RSRZ outliers, followed by percent RSRZ outliers for the chain as percentile scores relative to all X-ray entries and entries of similar resolution. The OWAB column contains the minimum, median, 95th percentile and maximum values of the occupancy-weighted average B-factor per residue. The column labelled ‘Q< 0.9’ lists the number of (and percentage) of residues with an average occupancy less than 0.9.

Mol	Chain	Analysed	<RSRZ>	#RSRZ>2	OWAB(Å ²)	Q<0.9
1	A	585/603 (97%)	-0.69	1 (0%) 95 96	4, 9, 20, 43	0
1	B	585/603 (97%)	-0.67	2 (0%) 94 96	4, 9, 20, 47	0
All	All	1170/1206 (97%)	-0.68	3 (0%) 94 96	4, 9, 20, 47	0

All (3) RSRZ outliers are listed below:

Mol	Chain	Res	Type	RSRZ
1	A	592	ASP	3.5
1	B	592	ASP	2.6
1	B	593	ASP	2.2

6.2 Non-standard residues in protein, DNA, RNA chains [i](#)

There are no non-standard protein/DNA/RNA residues in this entry.

6.3 Carbohydrates [i](#)

There are no monosaccharides in this entry.

6.4 Ligands [i](#)

In the following table, the Atoms column lists the number of modelled atoms in the group and the number defined in the chemical component dictionary. The B-factors column lists the minimum, median, 95th percentile and maximum values of B factors of atoms in the group. The column labelled ‘Q< 0.9’ lists the number of atoms with occupancy less than 0.9.

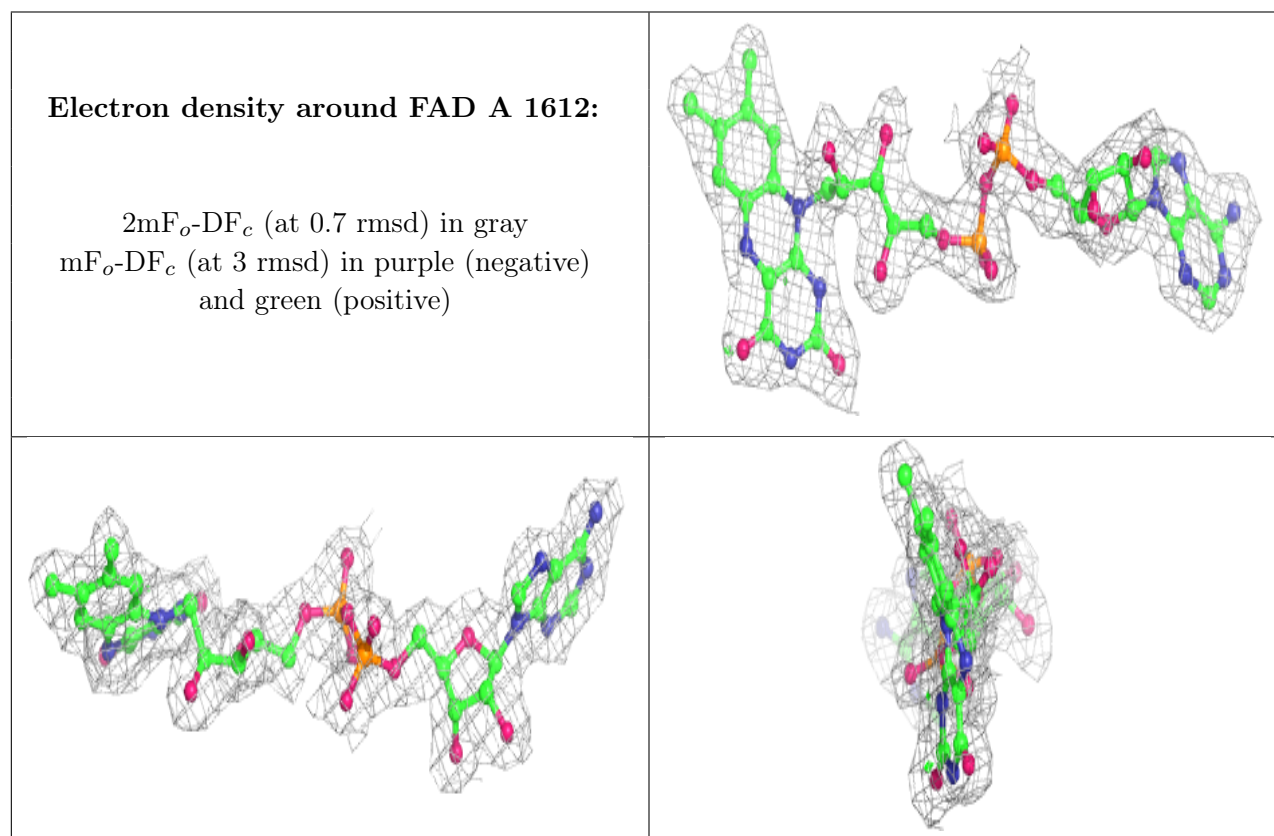
Mol	Type	Chain	Res	Atoms	RSCC	RSR	B-factors(Å ²)	Q<0.9
3	PO4	A	1512	5/5	0.93	0.23	52,54,56,56	0
3	PO4	B	1515	5/5	0.96	0.23	38,38,40,41	0

Continued on next page...

Continued from previous page...

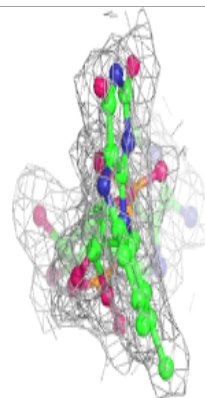
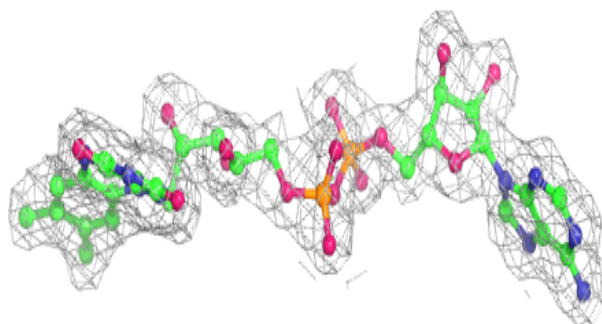
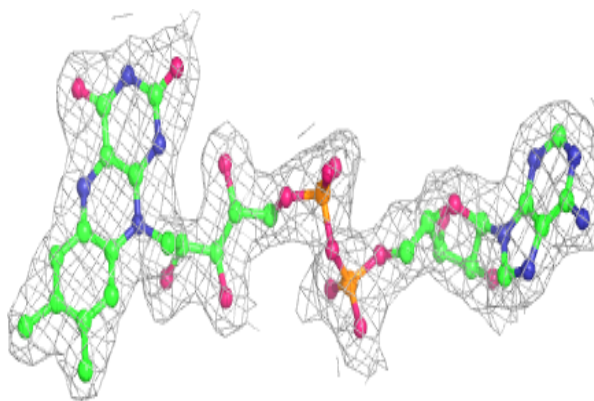
Mol	Type	Chain	Res	Atoms	RSCC	RSR	B-factors(\AA^2)	Q<0.9
7	PYR	A	1613	6/6	0.97	0.11	12,14,15,16	0
7	PYR	B	1616	6/6	0.97	0.15	15,16,17,20	0
2	MG	B	1513	1/1	0.98	0.04	7,7,7,7	0
6	FAD	A	1612	53/53	0.98	0.09	3,6,9,9	0
2	MG	A	1510	1/1	0.99	0.05	6,6,6,6	0
6	FAD	B	1615	53/53	0.99	0.09	3,5,7,8	0
5	TDM	A	1611	29/29	0.99	0.10	4,9,12,13	0
5	TDM	B	1614	29/29	0.99	0.11	4,9,13,13	0
4	NA	A	1514	1/1	1.00	0.19	2,2,2,2	1
4	NA	B	1511	1/1	1.00	0.11	2,2,2,2	1

The following is a graphical depiction of the model fit to experimental electron density of all instances of the Ligand of Interest. In addition, ligands with molecular weight > 250 and outliers as shown on the geometry validation Tables will also be included. Each fit is shown from different orientation to approximate a three-dimensional view.

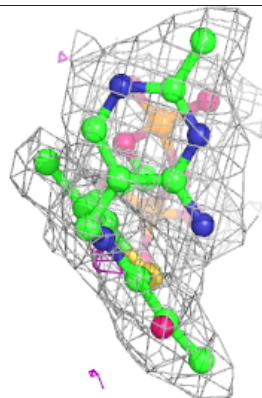
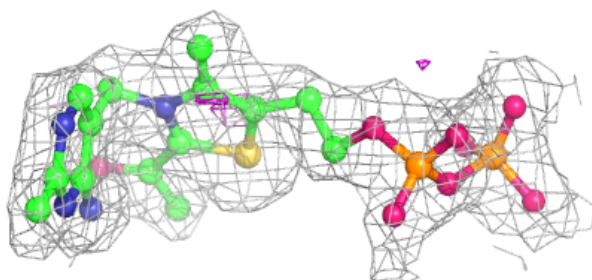
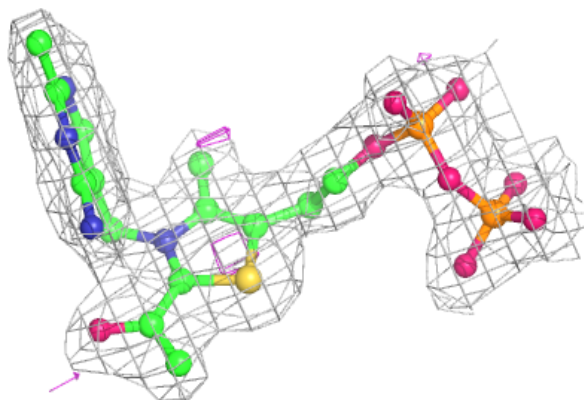


Electron density around FAD B 1615:

$2mF_o-DF_c$ (at 0.7 rmsd) in gray
 mF_o-DF_c (at 3 rmsd) in purple (negative)
and green (positive)

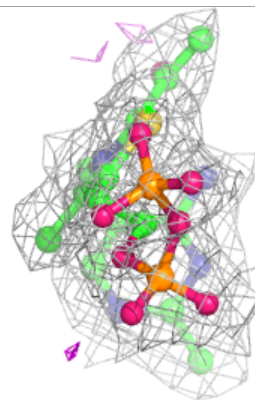
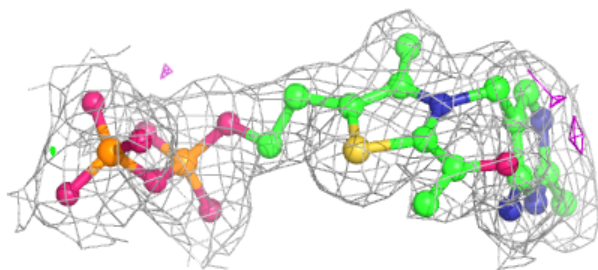
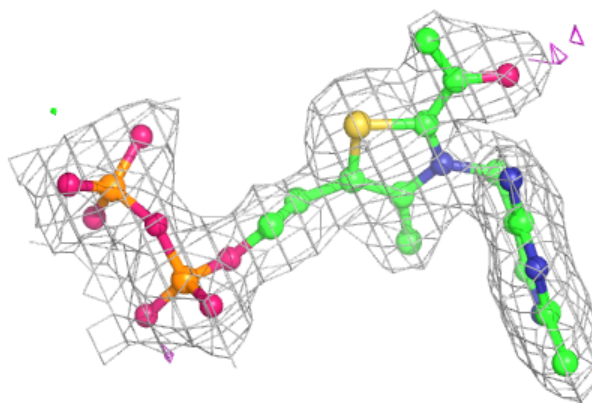
**Electron density around TDM A 1611:**

$2mF_o-DF_c$ (at 0.7 rmsd) in gray
 mF_o-DF_c (at 3 rmsd) in purple (negative)
and green (positive)



Electron density around TDM B 1614:

$2mF_o-DF_c$ (at 0.7 rmsd) in gray
 mF_o-DF_c (at 3 rmsd) in purple (negative)
and green (positive)



6.5 Other polymers [i](#)

There are no such residues in this entry.