



wwPDB X-ray Structure Validation Summary Report ⓘ

May 22, 2020 – 03:21 pm BST

PDB ID : 3EZN
Title : Crystal structure of phosphoglyceromutase from burkholderia pseudomallei 1710b
Authors : Seattle Structural Genomics Center for Infectious Disease (SSGCID)
Deposited on : 2008-10-23
Resolution : 2.10 Å(reported)

This is a wwPDB X-ray Structure Validation Summary Report for a publicly released PDB entry.

We welcome your comments at validation@mail.wwpdb.org

A user guide is available at

<https://www.wwpdb.org/validation/2017/XrayValidationReportHelp>

with specific help available everywhere you see the ⓘ symbol.

The following versions of software and data (see [references ⓘ](#)) were used in the production of this report:

MolProbity	:	4.02b-467
Mogul	:	1.8.5 (274361), CSD as541be (2020)
Xtriage (Phenix)	:	1.13
EDS	:	2.11
Percentile statistics	:	20191225.v01 (using entries in the PDB archive December 25th 2019)
Refmac	:	5.8.0158
CCP4	:	7.0.044 (Gargrove)
Ideal geometry (proteins)	:	Engh & Huber (2001)
Ideal geometry (DNA, RNA)	:	Parkinson et al. (1996)
Validation Pipeline (wwPDB-VP)	:	2.11

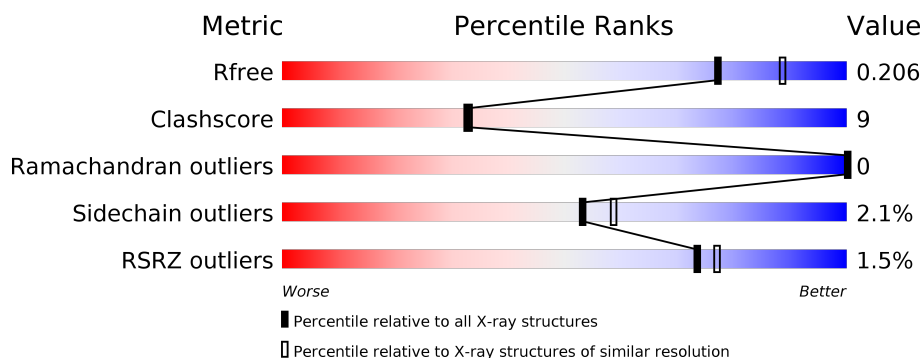
1 Overall quality at a glance

The following experimental techniques were used to determine the structure:

X-RAY DIFFRACTION

The reported resolution of this entry is 2.10 Å.

Percentile scores (ranging between 0-100) for global validation metrics of the entry are shown in the following graphic. The table shows the number of entries on which the scores are based.



Metric	Whole archive (#Entries)	Similar resolution (#Entries, resolution range(Å))
R_{free}	130704	5197 (2.10-2.10)
Clashscore	141614	5710 (2.10-2.10)
Ramachandran outliers	138981	5647 (2.10-2.10)
Sidechain outliers	138945	5648 (2.10-2.10)
RSRZ outliers	127900	5083 (2.10-2.10)

The table below summarises the geometric issues observed across the polymeric chains and their fit to the electron density. The red, orange, yellow and green segments on the lower bar indicate the fraction of residues that contain outliers for ≥ 3 , 2, 1 and 0 types of geometric quality criteria respectively. A grey segment represents the fraction of residues that are not modelled. The numeric value for each fraction is indicated below the corresponding segment, with a dot representing fractions $\leq 5\%$. The upper red bar (where present) indicates the fraction of residues that have poor fit to the electron density. The numeric value is given above the bar.

Mol	Chain	Length	Quality of chain
1	A	257	<div> <div>2%</div> <div> <div></div> <div>74%</div> <div>16%</div> <div>8%</div> </div> </div>
1	B	257	<div> <div>%</div> <div> <div></div> <div>73%</div> <div>17%</div> <div>10%</div> </div> </div>

2 Entry composition

There are 3 unique types of molecules in this entry. The entry contains 4128 atoms, of which 0 are hydrogens and 0 are deuteriums.

In the tables below, the ZeroOcc column contains the number of atoms modelled with zero occupancy, the AltConf column contains the number of residues with at least one atom in alternate conformation and the Trace column contains the number of residues modelled with at most 2 atoms.

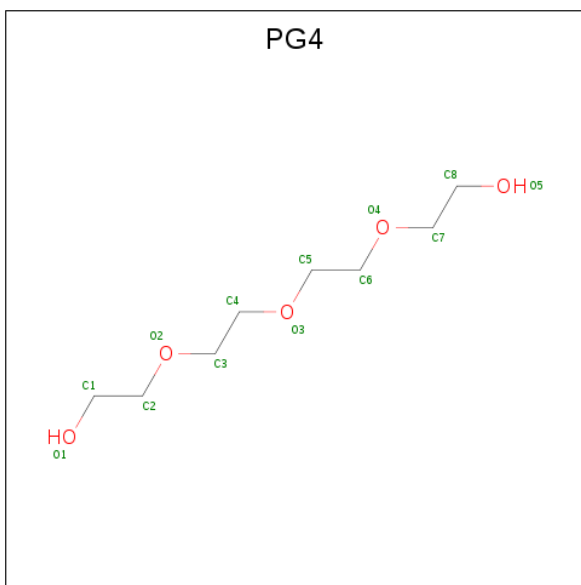
- Molecule 1 is a protein called 2,3-bisphosphoglycerate-dependent phosphoglycerate mutase.

Mol	Chain	Residues	Atoms					ZeroOcc	AltConf	Trace
1	A	236	Total	C	N	O	S	3	2	0
			1876	1197	332	343	4			
1	B	231	Total	C	N	O	S	0	1	0
			1850	1178	325	343	4			

There are 16 discrepancies between the modelled and reference sequences:

Chain	Residue	Modelled	Actual	Comment	Reference
A	-7	MET	-	expression tag	UNP Q3JWH7
A	-6	ALA	-	expression tag	UNP Q3JWH7
A	-5	HIS	-	expression tag	UNP Q3JWH7
A	-4	HIS	-	expression tag	UNP Q3JWH7
A	-3	HIS	-	expression tag	UNP Q3JWH7
A	-2	HIS	-	expression tag	UNP Q3JWH7
A	-1	HIS	-	expression tag	UNP Q3JWH7
A	0	HIS	-	expression tag	UNP Q3JWH7
B	-7	MET	-	expression tag	UNP Q3JWH7
B	-6	ALA	-	expression tag	UNP Q3JWH7
B	-5	HIS	-	expression tag	UNP Q3JWH7
B	-4	HIS	-	expression tag	UNP Q3JWH7
B	-3	HIS	-	expression tag	UNP Q3JWH7
B	-2	HIS	-	expression tag	UNP Q3JWH7
B	-1	HIS	-	expression tag	UNP Q3JWH7
B	0	HIS	-	expression tag	UNP Q3JWH7

- Molecule 2 is TETRAETHYLENE GLYCOL (three-letter code: PG4) (formula: C₈H₁₈O₅).

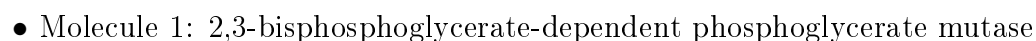


Mol	Chain	Residues	Atoms			ZeroOcc	AltConf
2	A	1	Total	C	O	0	0
			10	6	4		
2	A	1	Total	C	O	0	0
			7	4	3		
2	B	1	Total	C	O	0	0
			10	6	4		
2	B	1	Total	C	O	0	0
			10	6	4		

- Molecule 3 is water.

Mol	Chain	Residues	Atoms		ZeroOcc	AltConf
3	A	177	Total	O	0	0
			177	177		
3	B	188	Total	O	0	0
			188	188		

- Molecule 1: 2,3-bisphosphoglycerate-dependent phosphoglycerate mutase



4 Data and refinement statistics

Property	Value	Source
Space group	P 1	Depositor
Cell constants a, b, c, α , β , γ	44.94Å 49.08Å 62.11Å 107.11° 91.19° 107.81°	Depositor
Resolution (Å)	50.00 – 2.10 19.73 – 2.10	Depositor EDS
% Data completeness (in resolution range)	93.8 (50.00-2.10) 93.9 (19.73-2.10)	Depositor EDS
R_{merge}	0.04	Depositor
R_{sym}	0.04	Depositor
$\langle I/\sigma(I) \rangle$ ¹	8.87 (at 2.09Å)	Xtriage
Refinement program	REFMAC 5.5.0046	Depositor
R, R_{free}	0.150 , 0.204 0.155 , 0.206	Depositor DCC
R_{free} test set	1315 reflections (5.01%)	wwPDB-VP
Wilson B-factor (Å ²)	16.0	Xtriage
Anisotropy	0.139	Xtriage
Bulk solvent k_{sol} (e/Å ³), B_{sol} (Å ²)	0.39 , 62.5	EDS
L-test for twinning ²	$\langle L \rangle = 0.49$, $\langle L^2 \rangle = 0.32$	Xtriage
Estimated twinning fraction	No twinning to report.	Xtriage
F_o, F_c correlation	0.96	EDS
Total number of atoms	4128	wwPDB-VP
Average B, all atoms (Å ²)	19.0	wwPDB-VP

Xtriage's analysis on translational NCS is as follows: *The largest off-origin peak in the Patterson function is 8.85% of the height of the origin peak. No significant pseudotranslation is detected.*

¹Intensities estimated from amplitudes.

²Theoretical values of $\langle |L| \rangle$, $\langle L^2 \rangle$ for acentric reflections are 0.5, 0.333 respectively for untwinned datasets, and 0.375, 0.2 for perfectly twinned datasets.

5 Model quality [i](#)

5.1 Standard geometry [i](#)

Bond lengths and bond angles in the following residue types are not validated in this section: PG4

The Z score for a bond length (or angle) is the number of standard deviations the observed value is removed from the expected value. A bond length (or angle) with $|Z| > 5$ is considered an outlier worth inspection. RMSZ is the root-mean-square of all Z scores of the bond lengths (or angles).

Mol	Chain	Bond lengths		Bond angles	
		RMSZ	$\# Z > 5$	RMSZ	$\# Z > 5$
1	A	1.22	5/1925 (0.3%)	0.93	8/2625 (0.3%)
1	B	0.97	1/1900 (0.1%)	0.83	1/2592 (0.0%)
All	All	1.10	6/3825 (0.2%)	0.88	9/5217 (0.2%)

The worst 5 of 6 bond length outliers are listed below:

Mol	Chain	Res	Type	Atoms	Z	Observed(Å)	Ideal(Å)
1	A	34[A]	ARG	N-CA	-18.14	1.10	1.46
1	A	34[B]	ARG	N-CA	-18.14	1.10	1.46
1	A	34[A]	ARG	CA-C	16.59	1.96	1.52
1	A	34[B]	ARG	CA-C	16.59	1.96	1.52
1	A	151	CYS	CB-SG	-6.01	1.72	1.82

The worst 5 of 9 bond angle outliers are listed below:

Mol	Chain	Res	Type	Atoms	Z	Observed(°)	Ideal(°)
1	A	34[A]	ARG	N-CA-CB	8.58	126.05	110.60
1	A	34[B]	ARG	N-CA-CB	8.58	126.05	110.60
1	A	33	ASN	C-N-CA	6.38	137.66	121.70
1	A	34[A]	ARG	CB-CA-C	-6.03	98.35	110.40
1	A	34[B]	ARG	CB-CA-C	-6.03	98.35	110.40

There are no chirality outliers.

There are no planarity outliers.

5.2 Too-close contacts [i](#)

In the following table, the Non-H and H(model) columns list the number of non-hydrogen atoms and hydrogen atoms in the chain respectively. The H(added) column lists the number of hydrogen

atoms added and optimized by MolProbity. The Clashes column lists the number of clashes within the asymmetric unit, whereas Symm-Clashes lists symmetry related clashes.

Mol	Chain	Non-H	H(model)	H(added)	Clashes	Symm-Clashes
1	A	1876	0	1854	33	0
1	B	1850	0	1820	32	0
2	A	17	0	21	5	0
2	B	20	0	26	4	0
3	A	177	0	0	1	0
3	B	188	0	0	2	0
All	All	4128	0	3721	65	0

The all-atom clashscore is defined as the number of clashes found per 1000 atoms (including hydrogen atoms). The all-atom clashscore for this structure is 9.

The worst 5 of 65 close contacts within the same asymmetric unit are listed below, sorted by their clash magnitude.

Atom-1	Atom-2	Interatomic distance (Å)	Clash overlap (Å)
1:A:109:GLN:O	1:A:112:VAL:HG22	1.72	0.90
1:B:119:THR:HG22	3:B:359:HOH:O	1.77	0.83
1:A:115:ARG:NH1	1:A:202:VAL:HG23	1.96	0.81
1:A:115:ARG:HH12	1:A:202:VAL:HG23	1.50	0.77
1:B:184:ASN:HD22	1:B:187:ARG:HH11	1.38	0.72

There are no symmetry-related clashes.

5.3 Torsion angles [i](#)

5.3.1 Protein backbone [i](#)

In the following table, the Percentiles column shows the percent Ramachandran outliers of the chain as a percentile score with respect to all X-ray entries followed by that with respect to entries of similar resolution.

The Analysed column shows the number of residues for which the backbone conformation was analysed, and the total number of residues.

Mol	Chain	Analysed	Favoured	Allowed	Outliers	Percentiles	
1	A	236 / 257 (92%)	231 (98%)	5 (2%)	0	100	100
1	B	230 / 257 (90%)	225 (98%)	5 (2%)	0	100	100
All	All	466 / 514 (91%)	456 (98%)	10 (2%)	0	100	100

There are no Ramachandran outliers to report.

5.3.2 Protein sidechains [i](#)

In the following table, the Percentiles column shows the percent sidechain outliers of the chain as a percentile score with respect to all X-ray entries followed by that with respect to entries of similar resolution.

The Analysed column shows the number of residues for which the sidechain conformation was analysed, and the total number of residues.

Mol	Chain	Analysed	Rotameric	Outliers	Percentiles	
1	A	193/211 (92%)	189 (98%)	4 (2%)	53	59
1	B	194/211 (92%)	190 (98%)	4 (2%)	53	59
All	All	387/422 (92%)	379 (98%)	8 (2%)	53	59

5 of 8 residues with a non-rotameric sidechain are listed below:

Mol	Chain	Res	Type
1	A	158	ARG
1	B	230	ASP
1	B	136	PRO
1	A	143	ARG
1	B	90	TYR

Some sidechains can be flipped to improve hydrogen bonding and reduce clashes. 5 of 10 such sidechains are listed below:

Mol	Chain	Res	Type
1	B	41	GLN
1	B	71	GLN
1	B	145	GLN
1	B	15	ASN
1	B	86	ASN

5.3.3 RNA [i](#)

There are no RNA molecules in this entry.

5.4 Non-standard residues in protein, DNA, RNA chains [i](#)

There are no non-standard protein/DNA/RNA residues in this entry.

5.5 Carbohydrates

There are no carbohydrates in this entry.

5.6 Ligand geometry

4 ligands are modelled in this entry.

In the following table, the Counts columns list the number of bonds (or angles) for which Mogul statistics could be retrieved, the number of bonds (or angles) that are observed in the model and the number of bonds (or angles) that are defined in the Chemical Component Dictionary. The Link column lists molecule types, if any, to which the group is linked. The Z score for a bond length (or angle) is the number of standard deviations the observed value is removed from the expected value. A bond length (or angle) with $|Z| > 2$ is considered an outlier worth inspection. RMSZ is the root-mean-square of all Z scores of the bond lengths (or angles).

Mol	Type	Chain	Res	Link	Bond lengths			Bond angles		
					Counts	RMSZ	$\# Z > 2$	Counts	RMSZ	$\# Z > 2$
2	PG4	B	250	-	9,9,12	0.49	0	8,8,11	0.48	0
2	PG4	A	250	-	9,9,12	0.43	0	8,8,11	0.34	0
2	PG4	B	251	-	9,9,12	0.61	0	8,8,11	0.47	0
2	PG4	A	251	-	6,6,12	0.25	0	5,5,11	0.69	0

In the following table, the Chirals column lists the number of chiral outliers, the number of chiral centers analysed, the number of these observed in the model and the number defined in the Chemical Component Dictionary. Similar counts are reported in the Torsion and Rings columns. '-' means no outliers of that kind were identified.

Mol	Type	Chain	Res	Link	Chirals	Torsions	Rings
2	PG4	B	250	-	-	5/7/7/10	-
2	PG4	A	250	-	-	3/7/7/10	-
2	PG4	B	251	-	-	3/7/7/10	-
2	PG4	A	251	-	-	2/4/4/10	-

There are no bond length outliers.

There are no bond angle outliers.

There are no chirality outliers.

5 of 13 torsion outliers are listed below:

Mol	Chain	Res	Type	Atoms
2	B	250	PG4	O3-C5-C6-O4
2	A	250	PG4	O4-C7-C8-O5

Continued on next page...

Continued from previous page...

Mol	Chain	Res	Type	Atoms
2	B	251	PG4	O4-C7-C8-O5
2	A	251	PG4	O2-C3-C4-O3
2	A	251	PG4	O3-C5-C6-O4

There are no ring outliers.

3 monomers are involved in 9 short contacts:

Mol	Chain	Res	Type	Clashes	Symm-Clashes
2	B	250	PG4	4	0
2	A	250	PG4	4	0
2	A	251	PG4	1	0

5.7 Other polymers [i](#)

There are no such residues in this entry.

5.8 Polymer linkage issues [i](#)

There are no chain breaks in this entry.

6 Fit of model and data [i](#)

6.1 Protein, DNA and RNA chains [i](#)

In the following table, the column labelled ‘#RSRZ> 2’ contains the number (and percentage) of RSRZ outliers, followed by percent RSRZ outliers for the chain as percentile scores relative to all X-ray entries and entries of similar resolution. The OWAB column contains the minimum, median, 95th percentile and maximum values of the occupancy-weighted average B-factor per residue. The column labelled ‘Q< 0.9’ lists the number of (and percentage) of residues with an average occupancy less than 0.9.

Mol	Chain	Analysed	<RSRZ>	#RSRZ>2	OWAB(Å ²)	Q<0.9
1	A	236/257 (91%)	-0.34	5 (2%) 63 68	7, 17, 35, 53	1 (0%)
1	B	231/257 (89%)	-0.52	2 (0%) 84 86	6, 15, 29, 44	0
All	All	467/514 (90%)	-0.43	7 (1%) 73 77	6, 16, 33, 53	1 (0%)

The worst 5 of 7 RSRZ outliers are listed below:

Mol	Chain	Res	Type	RSRZ
1	A	235	ALA	4.9
1	A	234	ILE	4.1
1	B	0	HIS	3.2
1	A	233	ALA	3.2
1	A	232	GLU	2.8

6.2 Non-standard residues in protein, DNA, RNA chains [i](#)

There are no non-standard protein/DNA/RNA residues in this entry.

6.3 Carbohydrates [i](#)

There are no carbohydrates in this entry.

6.4 Ligands [i](#)

In the following table, the Atoms column lists the number of modelled atoms in the group and the number defined in the chemical component dictionary. The B-factors column lists the minimum, median, 95th percentile and maximum values of B factors of atoms in the group. The column labelled ‘Q< 0.9’ lists the number of atoms with occupancy less than 0.9.

Mol	Type	Chain	Res	Atoms	RSCC	RSR	B-factors(\AA^2)	Q<0.9
2	PG4	B	250	10/13	0.77	0.24	44,46,49,51	0
2	PG4	B	251	10/13	0.80	0.16	38,39,43,44	0
2	PG4	A	251	7/13	0.80	0.16	56,57,58,60	0
2	PG4	A	250	10/13	0.88	0.16	43,45,50,51	0

6.5 Other polymers [i](#)

There are no such residues in this entry.